

4+400	Volume of crackle: medium Width of crackle: 05-100mm There is a pothole in + 4513 metre. (500*70*50mm) 304 / 2800 * 100 = 10.86%	Volume of crackle: medium Width of crackle: 05-30mm 322 / 2800 * 100 = 11.50%	Volume of crackle: less Width of crackle: 05-10mm 381 / 2800 * 100 = 13.61%	Volume of crackle: less Width of crackle: 05-15mm 286 / 2800 * 100 = 10.21%
COMMENT				
SUBJECTIVE EVALUATION	4	4	3	3
OBJECTIVE EVALUATION	b, c, d	b, d	b, d	b, d
TYPE OF PAVEMENT REHABILITATION	B	B	B	B



DSC00776



DSC00778

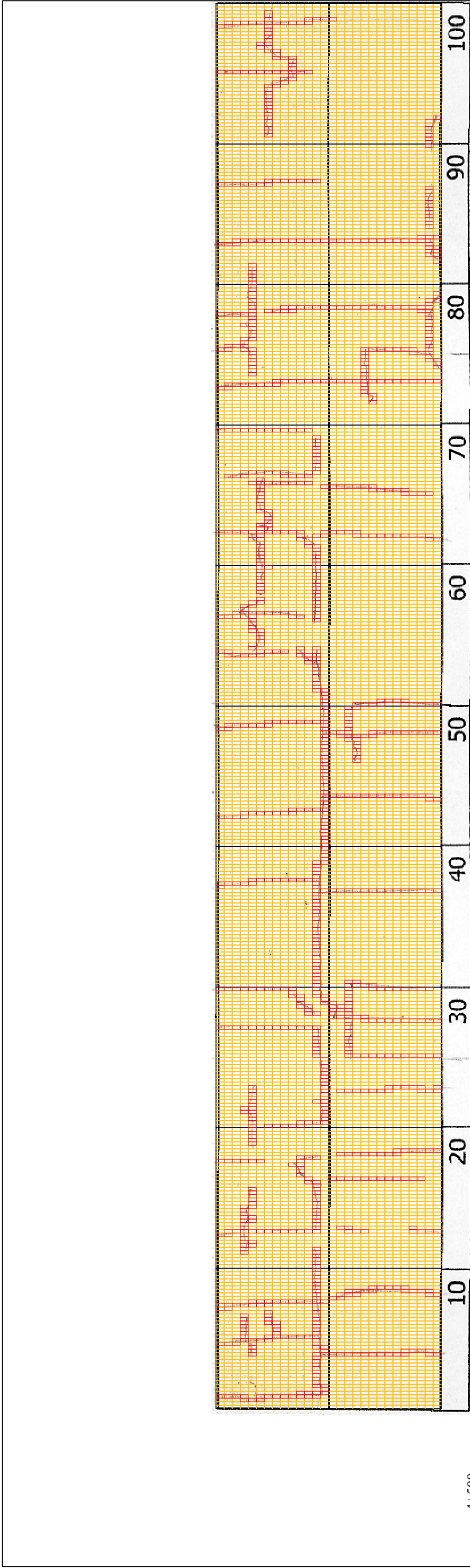


DSC00779



DSC00780

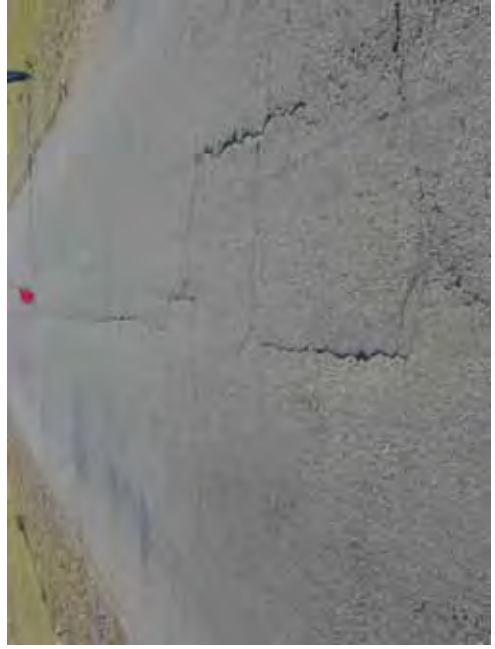
THE BASIC DESIGN STUDY ON CONSTRUCTION OF EASTERN ARTERIAL ROAD IN MONGOLIA	
JAPAN INTERNATIONAL COOPERATION AGENCY (JICA)	DEPARTMENT OF ROADS,
PACIFIC CONSULTANTS INTERNATIONAL JAPAN OVERSEAS CONSULTANTS	MINISTRY OF INFRASTRUCTURE, THE GOVERNMENT OF MONGOLIA
Drawing title	Scale
4500-4600	No.
	D-43



4+500	Volume of crackle: less Width of crackle: 05-10mm 317 / 2800 * 100 = 11.32%	Volume of crackle: less Width of crackle: 05-10mm 290 / 2800 * 100 = 10.36%	Volume of crackle: less Width of crackle: 05-10mm 236 / 2800 * 100 = 8.43%		
COMMENT					
SUBJECTIVE EVALUATION	4	3	3		
OBJECTIVE EVALUATION	b, d	b	b		
TYPE OF PAVEMENT REHABILITATION	B	B	B		



DSC00781



DSC00782

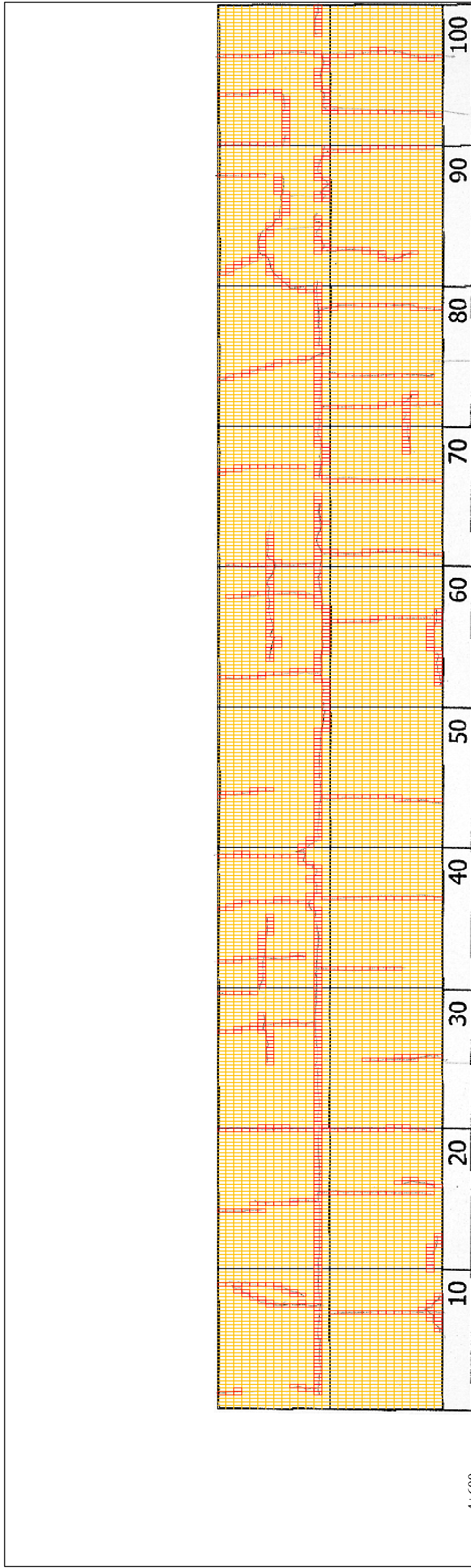


DSC00783



DSC00784

THE BASIC DESIGN STUDY ON CONSTRUCTION OF EASTERN ARTERIAL ROAD IN MONGOLIA	
JAPAN INTERNATIONAL COOPERATION AGENCY (JICA)	DEPARTMENT OF ROADS, MINISTRY OF INFRASTRUCTURE, THE GOVERNMENT OF MONGOLIA
PACIFIC CONSULTANTS INTERNATIONAL JAPAN OVERSEAS CONSULTANTS	
Drawing title	Scale
4600-4700	No. D-44



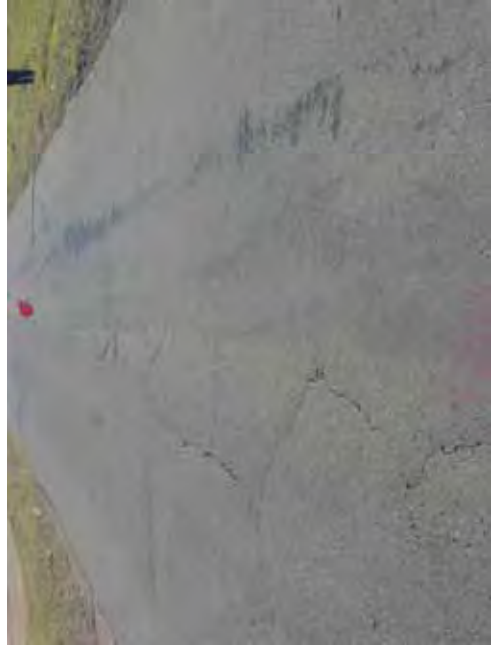
4+600	Volume of crackle: less Width of crackle: 05-10mm 254 / 2800 * 100 = 9.07%	Volume of crackle: medium Width of crackle: 05-15mm 262 / 2800 * 100 = 9.36%	Volume of crackle: less Width of crackle: 05-15mm 329 / 2800 * 100 = 11.75%	Volume of crackle: less Width of crackle: 05-10mm 277 / 2800 * 100 = 9.89%
COMMENT				
SUBJECTIVE EVALUATION	3	3	3	3
OBJECTIVE EVALUATION	b	b	b	b
TYPE OF PAVEMENT REHABILITATION	B	B	B	B



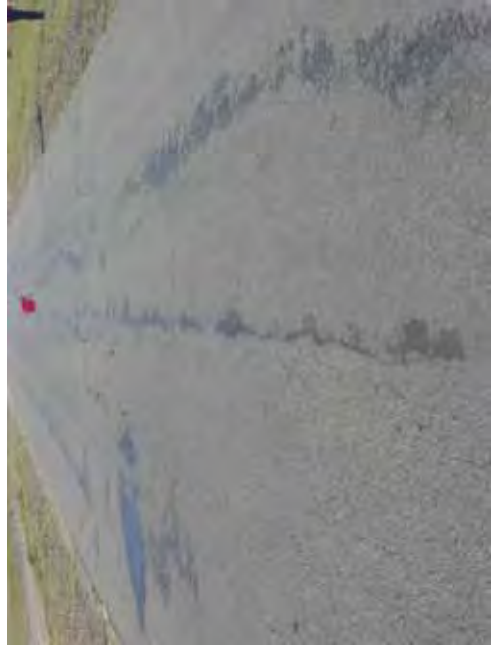
THE BASIC DESIGN STUDY ON CONSTRUCTION OF EASTERN ARTERIAL ROAD IN MONGOLIA	
JAPAN INTERNATIONAL COOPERATION AGENCY (JICA)	DEPARTMENT OF ROADS, MINISTRY OF INFRASTRUCTURE, THE GOVERNMENT OF MONGOLIA
PACIFIC CONSULTANTS INTERNATIONAL JAPAN OVERSEAS CONSULTANTS	
Drawing title	No.
4700-4800	D-45



4+700	Volume of crackle: medium Width of crackle: 05-15mm 299 / 2800 * 100 = 10.68%	Volume of crackle: medium Width of crackle: 05-20mm 293 / 2800 * 100 = 10.46%	Volume of crackle: medium Width of crackle: 05-30mm 251 / 2800 * 100 = 8.96%
COMMENT			
SUBJECTIVE EVALUATION	3	3	3
OBJECTIVE EVALUATION	b	b	b
TYPE OF PAVEMENT REHABILITATION	B	B	B



DSC00789



DSC00790



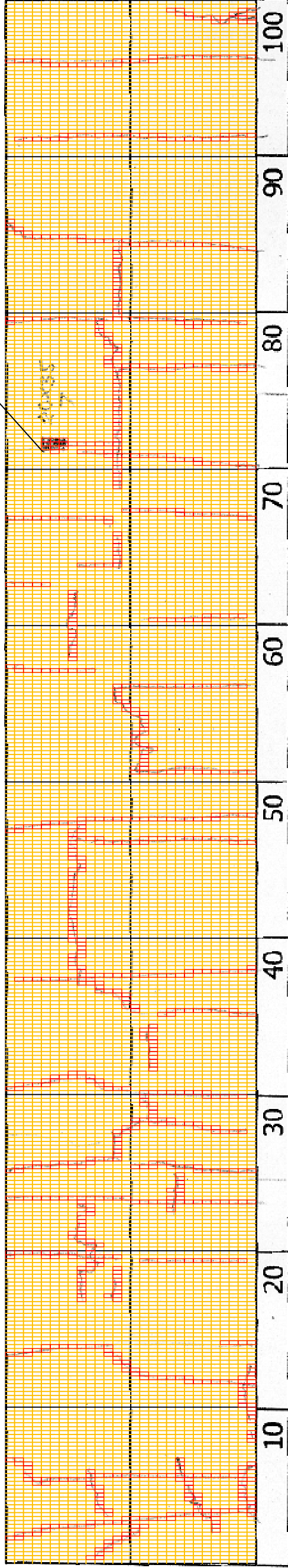
DSC00791



DSC00792

THE BASIC DESIGN STUDY ON CONSTRUCTION OF EASTERN ARTERIAL ROAD IN MONGOLIA	
JAPAN INTERNATIONAL COOPERATION AGENCY (JICA)	DEPARTMENT OF ROADS, MINISTRY OF INFRASTRUCTURE, THE GOVERNMENT OF MONGOLIA
PACIFIC CONSULTANTS INTERNATIONAL JAPAN OVERSEAS CONSULTANTS	
Drawing title	Scale
4800-4900	
No.	D-46

DSC00796



4+800

COMMENT	Volume of crackle: medium Width of crackle: 05-20mm 310 / 2800 * 100 = 11.07%	Volume of crackle: less Width of crackle: 05-20mm 278 / 2800 * 100 = 9.93%	Volume of crackle: medium Width of crackle: 05-10mm There is a pothole in + 4970 metre. (200*350*70mm) 211 / 2800 * 100 = 7.54%	Volume of crackle: less Width of crackle: 05-15mm 207 / 2800 * 100 = 7.39%
SUBJECTIVE EVALUATION	3	4	4	4
OBJECTIVE EVALUATION	b	b, d	b, d	b, d
TYPE OF PAVEMENT REHABILITATION	B	B	B	B



DSC00793



DSC00794



DSC00795



DSC00797

THE BASIC DESIGN STUDY ON CONSTRUCTION OF EASTERN ARTERIAL ROAD IN MONGOLIA

JAPAN INTERNATIONAL COOPERATION AGENCY (JICA)

MINISTRY OF INFRASTRUCTURE,
THE GOVERNMENT OF MONGOLIA

PACIFIC CONSULTANTS INTERNATIONAL
JAPAN OVERSEAS CONSULTANTS

Drawing title

4900-5000

No.

D-47

Scale