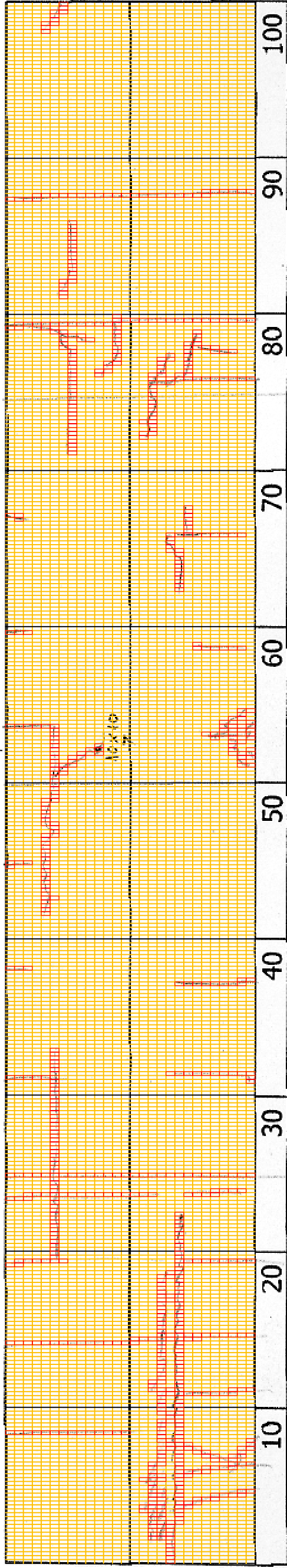


DSC00756



3+900

COMMENT	Volume of crackle: less Width of crackle: 05-10mm 373 / 2800 * 100 = 13.32%	Volume of crackle: less Width of crackle: 05-10mm 104 / 2800 * 100 = 3.71%	Volume of crackle: less Width of crackle: 10-30mm There is a pothole in + 4050 metre. (100*100*70mm) 145 / 2800 * 100 = 5.18%	Volume of crackle: less Width of crackle: 10-15mm 176 / 2800 * 100 = 6.29%
SUBJECTIVE EVALUATION	3	3	3	3
OBJECTIVE EVALUATION	b	b	b, c	b
TYPE OF PAVEMENT REHABILITATION	B	B	D	D



DSC00754



DSC00755



DSC00757



DSC00758

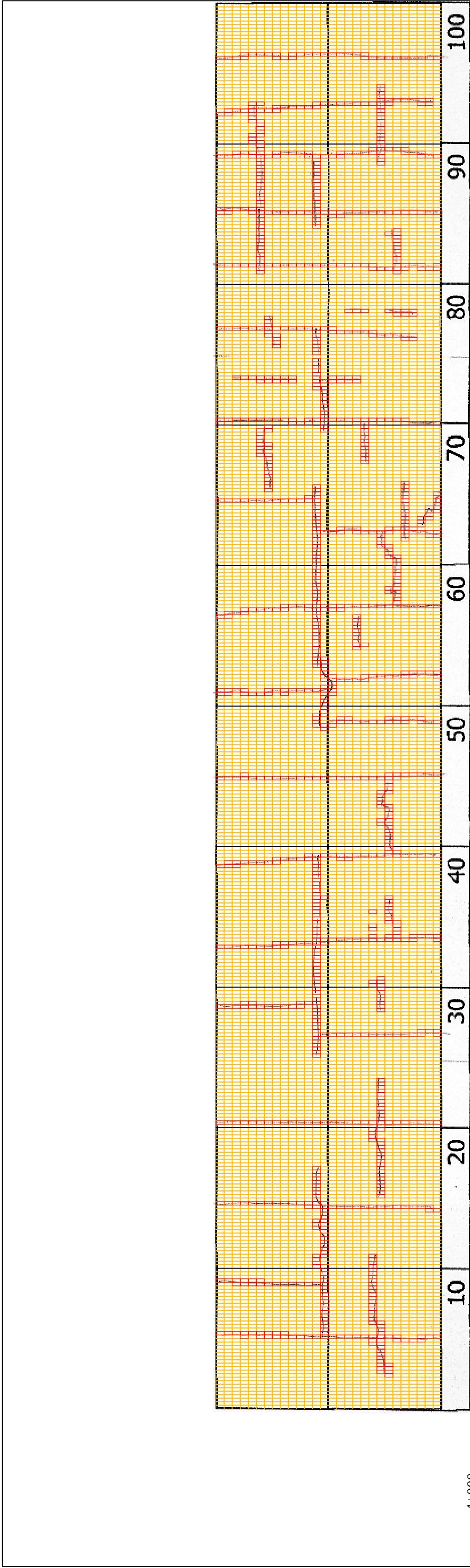
THE BASIC DESIGN STUDY ON CONSTRUCTION OF EASTERN ARTERIAL ROAD IN MONGOLIA

JAPAN INTERNATIONAL COOPERATION AGENCY (JICA)  
MINISTRY OF INFRASTRUCTURE,  
THE GOVERNMENT OF MONGOLIA

PACIFIC CONSULTANTS INTERNATIONAL  
JAPAN OVERSEAS CONSULTANTS

Scale  
4000-4100

No.  
D-38



4+000	10	20	30	40	50	60	70	80	90	100
COMMENT	Volume of crackle: medium Width of crackle: 10-100mm 238 / 2800 * 100 = 8.50%									
SUBJECTIVE EVALUATION	5									
OBJECTIVE EVALUATION	b, e									
TYPE OF PAVEMENT REHABILITATION	D									
	Volume of crackle: medium Width of crackle: 05-30mm 273 / 2800 * 100 = 9.75%									
	5									
	b, e									
	D									
	Volume of crackle: medium Width of crackle: 05-35mm 351 / 2800 * 100 = 12.54%									
	5									
	b, e									
	D									
	Volume of crackle: medium Width of crackle: 05-20mm 323 / 2800 * 100 = 11.54%									
	5									
	b, e									
	D									



DSC00759



DSC00760



DSC00761



DSC00762

THE BASIC DESIGN STUDY ON CONSTRUCTION OF EASTERN ARTERIAL ROAD IN MONGOLIA	
JAPAN INTERNATIONAL COOPERATION AGENCY (JICA)	DEPARTMENT OF ROADS, MINISTRY OF INFRASTRUCTURE, THE GOVERNMENT OF MONGOLIA
PACIFIC CONSULTANTS INTERNATIONAL JAPAN OVERSEAS CONSULTANTS	
Drawing title	4100-4200
Scale	No. D-39



4+100

COMMENT	Volume of crackle: medium Width of crackle: 10-40mm 321 / 2800 * 100 = 11.46%	Volume of crackle: medium Width of crackle: 05-20mm 362 / 2800 * 100 = 12.93%	Volume of crackle: medium Width of crackle: 05-25mm 462 / 2800 * 100 = 16.50%	Volume of crackle: less Width of crackle: 10-60mm There is a pothole in + 4274 metre. (100*150*40mm) 283 / 2800 * 100 = 10.11%
SUBJECTIVE EVALUATION	5	5	5	5
OBJECTIVE EVALUATION	b, e	b, e	b, e	b, e
TYPE OF PAVEMENT REHABILITATION	D	D	D	D



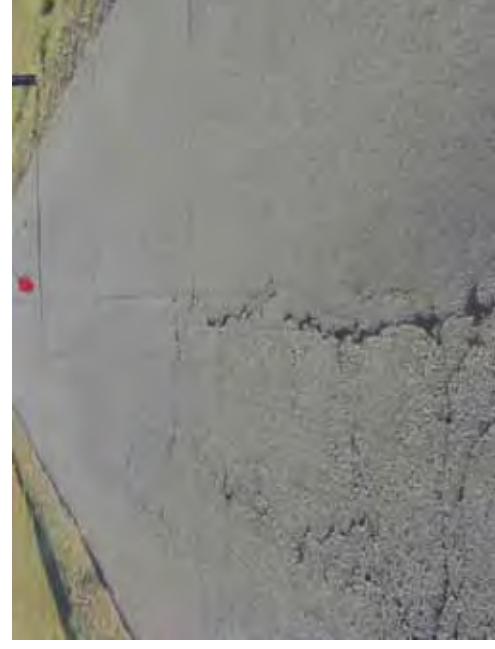
DSC00763



DSC00764



DSC0765



DSC00766

THE BASIC DESIGN STUDY ON CONSTRUCTION OF EASTERN ARTERIAL ROAD IN MONGOLIA

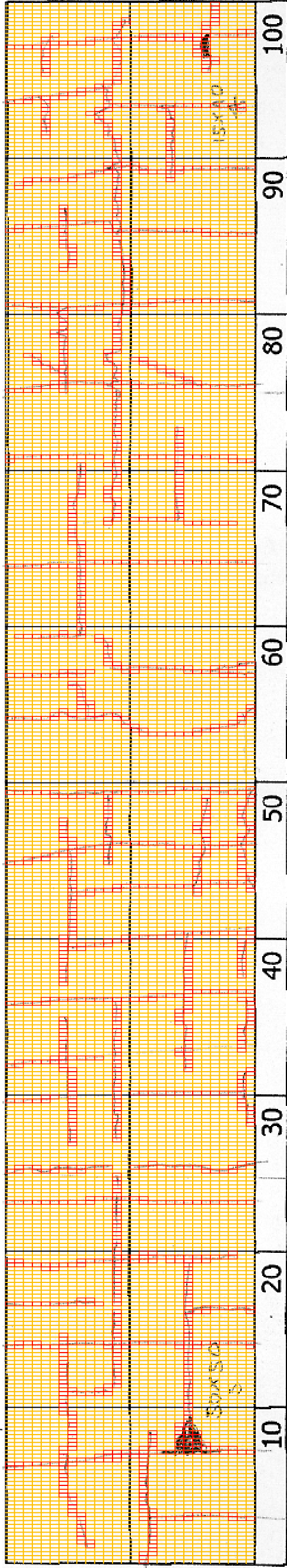
JAPAN INTERNATIONAL COOPERATION AGENCY (JICA)  
MINISTRY OF INFRASTRUCTURE,  
THE GOVERNMENT OF MONGOLIA

PACIFIC CONSULTANTS INTERNATIONAL  
JAPAN OVERSEAS CONSULTANTS

Scale  
4200-4300

No.  
D-40

DSC00768



4+200

COMMENT	Volume of crackle: medium Width of crackle: 10-70mm There is a pothole in + 4305 metre. (500*500*50mm) 400 / 2800 * 100 = 14.29%	Volume of crackle: less Width of crackle: 05-15mm 480 / 2800 * 100 = 17.14%	Volume of crackle: less Width of crackle: 05-10mm 289 / 2800 * 100 = 10.32%	Volume of crackle: less Width of crackle: 05-30mm There is a pothole in + 4397 metre. (150*100*40mm) 433 / 2800 * 100 = 15.46%
SUBJECTIVE EVALUATION	4	4	4	4
OBJECTIVE EVALUATION	b, c, e	b, e	b, e	b, c, e
TYPE OF PAVEMENT REHABILITATION	D	D	D	D



DSC00767



DSC00769



DSC00770



DSC00771

THE BASIC DESIGN STUDY ON CONSTRUCTION OF EASTERN ARTERIAL ROAD IN MONGOLIA

JAPAN INTERNATIONAL COOPERATION AGENCY (JICA)

MINISTRY OF INFRASTRUCTURE,  
THE GOVERNMENT OF MONGOLIA

PACIFIC CONSULTANTS INTERNATIONAL  
JAPAN OVERSEAS CONSULTANTS

Drawing title  
4300-4400

Scale

No.  
D-41



4+300

COMMENT	Volume of crackle: less Width of crackle: 05-20mm 381 / 2800 * 100 = 13.61%	Volume of crackle: medium Width of crackle: 10-60mm 345 / 2800 * 100 = 12.32%	Volume of crackle: medium Width of crackle: 05-60mm 364 / 2800 * 100 = 13.14%	Volume of crackle: most Width of crackle: 05-70mm There is a pothole in + 4488 metre. (500*300*40mm) There is a pothole in + 4498 metre. (150*150*70mm) 350 / 2800 * 100 = 12.50%
SUBJECTIVE EVALUATION	4	4	4	4
OBJECTIVE EVALUATION	b, e	b, e	b, e	b, c, e
TYPE OF PAVEMENT REHABILITATION	D	D	D	D



DSC00772



DSC00773



DSC00774



DSC00775

THE BASIC DESIGN STUDY ON CONSTRUCTION OF EASTERN ARTERIAL ROAD IN MONGOLIA

JAPAN INTERNATIONAL COOPERATION AGENCY (JICA)

MINISTRY OF INFRASTRUCTURE,  
THE GOVERNMENT OF MONGOLIA

PACIFIC CONSULTANTS INTERNATIONAL  
JAPAN OVERSEAS CONSULTANTS

Drawing title

4400-4500

No.

D-42

Scale