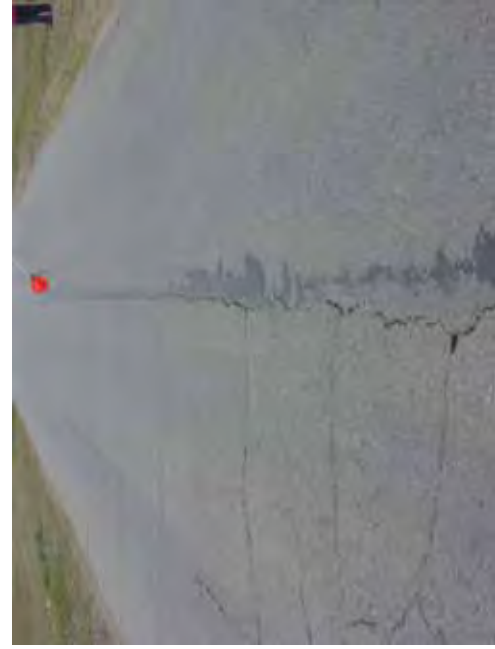


3+100

COMMENT	Volume of crackle: medium Width of crackle: 05-20mm 361 / 2800 * 12.89%	Volume of crackle: less Width of crackle: 05-35mm 344 / 2800 * 12.29%	Volume of crackle: medium Width of crackle: 05-15mm 403 / 2800 * 14.39%	Volume of crackle: less Width of crackle: 05-20mm 304 / 2800 * 10.86%
SUBJECTIVE EVALUATION	3	3	3	3
OBJECTIVE EVALUATION	b	b	b	b
TYPE OF PAVEMENT REHABILITATION	B	B	B	B



DSC00718



DSC00719



DSC00720



DSC00721

THE BASIC DESIGN STUDY ON CONSTRUCTION OF EASTERN ARTERIAL ROAD IN MONGOLIA

JAPAN INTERNATIONAL COOPERATION AGENCY (JICA)

DEPARTMENT OF ROADS,  
MINISTRY OF INFRASTRUCTURE,  
THE GOVERNMENT OF MONGOLIA

PACIFIC CONSULTANTS INTERNATIONAL  
JAPAN OVERSEAS CONSULTANTS

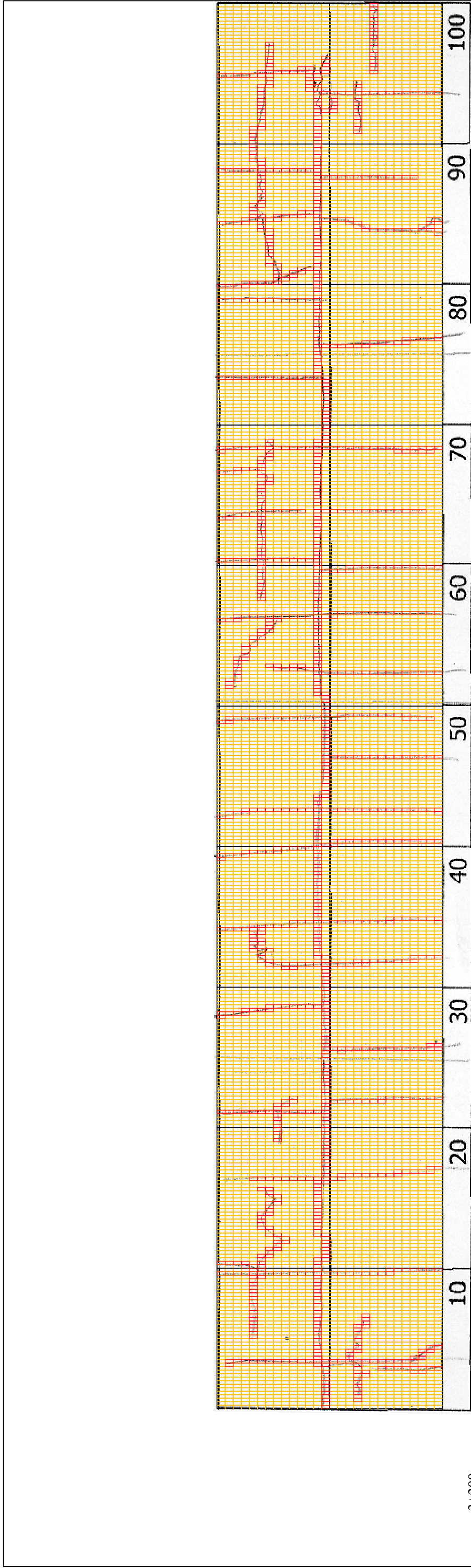
Drawing title

3100-3200

Scale

No.

D-29



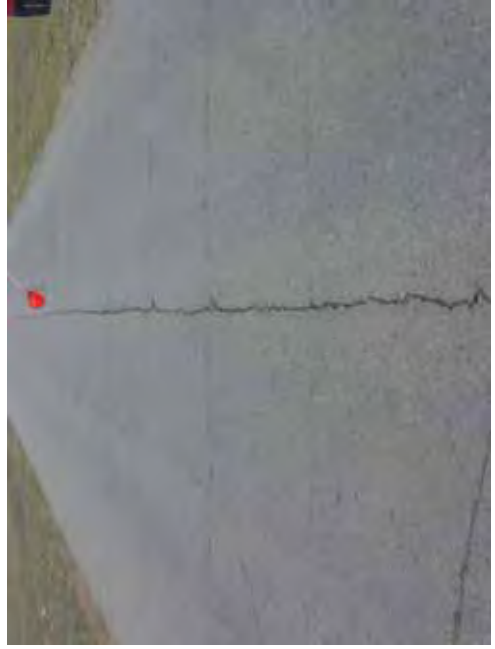
3+200	Volume of crackle: less Width of crackle: 05-25mm 330 / 2800 * 100 = 11.79%	Volume of crackle: less Width of crackle: 10-20mm 312 / 2800 * 100 = 11.14%	Volume of crackle: medium Width of crackle: 05-30mm 331 / 2800 * 100 = 11.81%	Volume of crackle: medium Width of crackle: 10-40mm 344 / 2800 * 100 = 12.29%
COMMENT				
SUBJECTIVE EVALUATION	3	3	3	3
OBJECTIVE EVALUATION	b	b	b	b
TYPE OF PAVEMENT REHABILITATION	B	B	B	B



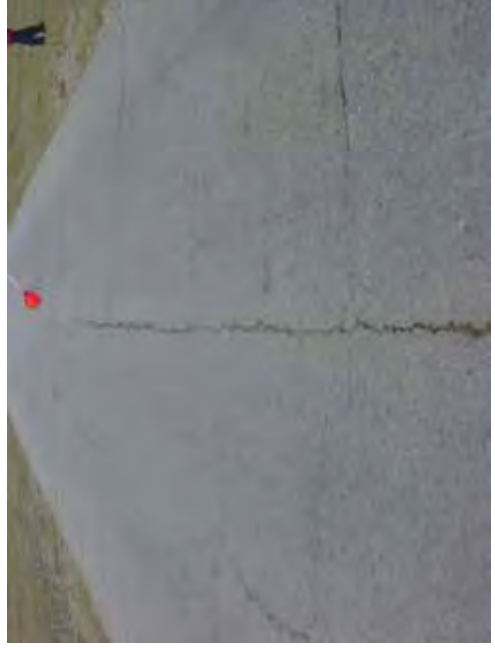
DSC00722



DSC00723

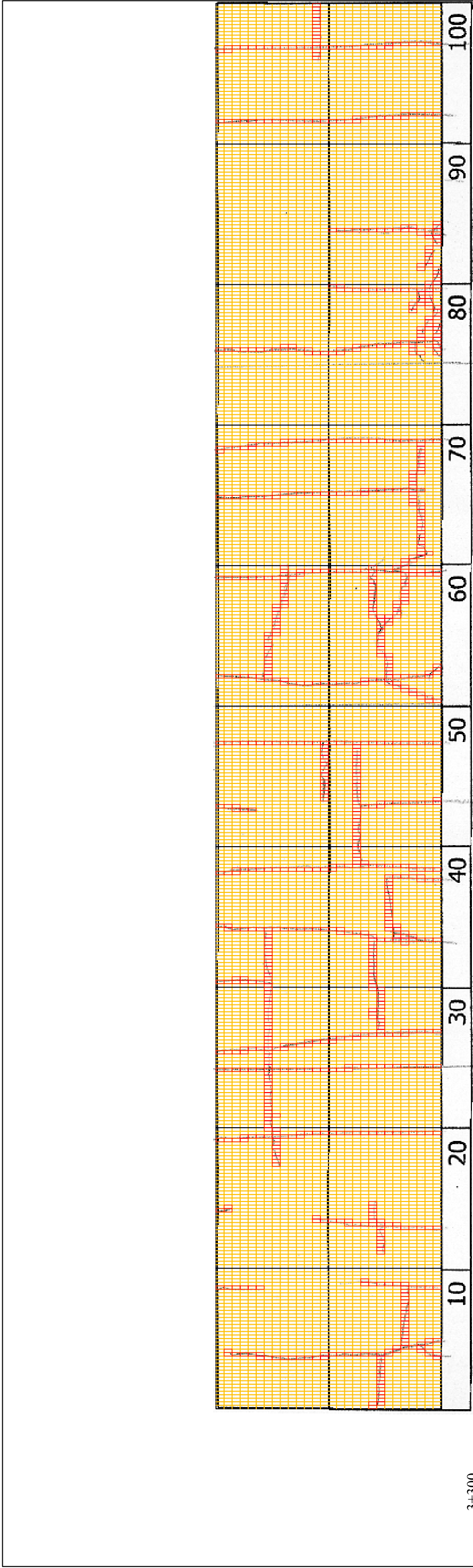


DSC00724



DSC00725

THE BASIC DESIGN STUDY ON CONSTRUCTION OF EASTERN ARTERIAL ROAD IN MONGOLIA	
JAPAN INTERNATIONAL COOPERATION AGENCY (JICA)	DEPARTMENT OF ROADS, MINISTRY OF INFRASTRUCTURE, THE GOVERNMENT OF MONGOLIA
PACIFIC CONSULTANTS INTERNATIONAL JAPAN OVERSEAS CONSULTANTS	
Drawing title	3200-3300
Scale	No.
	D-30



3+300	Volume of crackle: less Width of crackle: 05-20mm 216 / 2800 * 100 = 7.71%	Volume of crackle: medium Width of crackle: 10-25mm 297 / 2800 * 100 = 10.61%	Volume of crackle: medium Width of crackle: 10-50mm 263 / 2800 * 100 = 9.39%	Volume of crackle: less Width of crackle: 10-35mm 201 / 2800 * 100 = 7.18%
COMMENT				
SUBJECTIVE EVALUATION	3	3	3	3
OBJECTIVE EVALUATION	b	b	b	b
TYPE OF PAVEMENT REHABILITATION	B	B	B	B



DSC00726

DSC00727

DSC00728

THE BASIC DESIGN STUDY ON CONSTRUCTION OF EASTERN ARTERIAL ROAD IN MONGOLIA	
JAPAN INTERNATIONAL COOPERATION AGENCY (JICA)	DEPARTMENT OF ROADS, MINISTRY OF INFRASTRUCTURE, THE GOVERNMENT OF MONGOLIA
PACIFIC CONSULTANTS INTERNATIONAL JAPAN OVERSEAS CONSULTANTS	
Drawing title	Scale
3300-3400	No. D-31