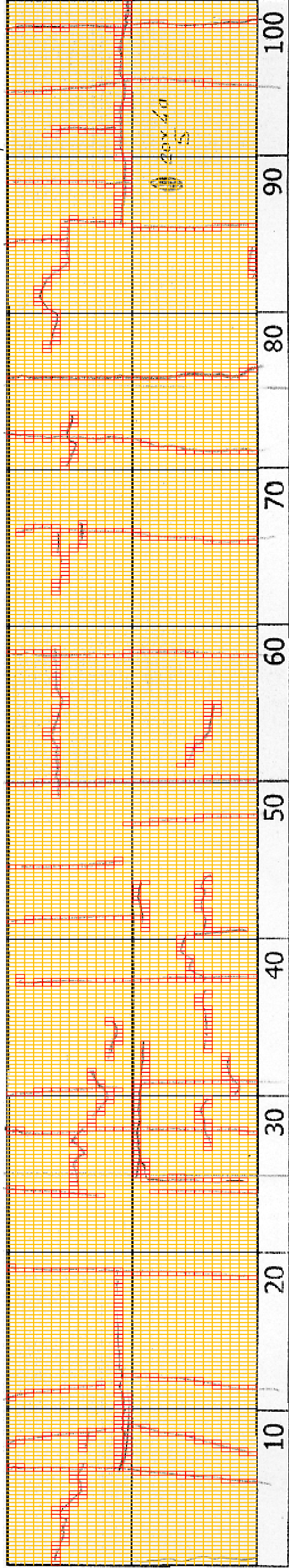
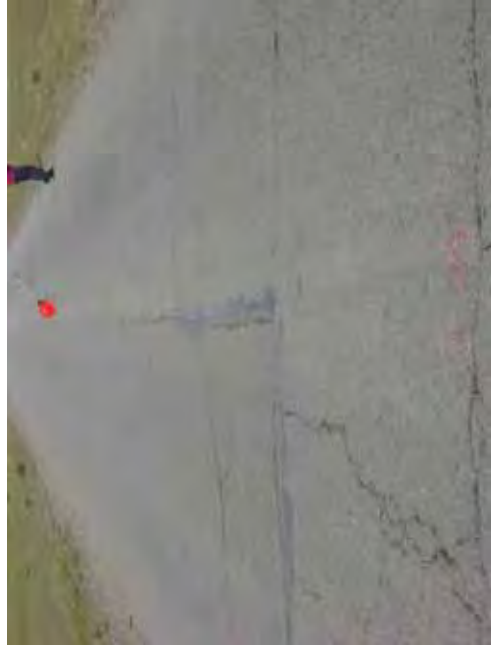


DSC00692



2+400

| | | | | |
|---------------------------------|---|---|--|---|
| COMMENT | Volume of crackle: less Width of crackle: 05-15mm 291 / 2800 * 100 = 10.39% | Volume of crackle: medium Width of crackle: 10-30mm 342 / 2800 * 100 = 12.21% | Volume of crackle: less Width of crackle: 05-40mm 233 / 2800 * 100 = 8.32% | Volume of crackle: less Width of crackle: 05-25mm There is a pothole in + 2489 metre. (200*400*50mm) 280 / 2800 * 100 = 10.00% |
| SUBJECTIVE EVALUATION | 3 | 3 | 3 | 3 |
| OBJECTIVE EVALUATION | b | b | b | b, c |
| TYPE OF PAVEMENT REHABILITATION | B | B | B | B |



DSC00688



DSC00689



DSC00690



DSC00691

THE BASIC DESIGN STUDY ON CONSTRUCTION OF EASTERN ARTERIAL ROAD IN MONGOLIA

JAPAN INTERNATIONAL COOPERATION AGENCY (JICA)
MINISTRY OF INFRASTRUCTURE,
THE GOVERNMENT OF MONGOLIA

PACIFIC CONSULTANTS INTERNATIONAL
JAPAN OVERSEAS CONSULTANTS

Scale
2:400-2:500

No.
D-22



2+500

| | | | | |
|---------------------------------|---|---|---|---|
| COMMENT | Volume of crackle: medium Width of crackle: 05-10mm 446 / 2800 * 100 = 15.93% | Volume of crackle: medium Width of crackle: 05-30mm 343 / 2800 * 100 = 12.25% | Volume of crackle: medium Width of crackle: 05-50mm 334 / 2800 * 100 = 11.93% | Volume of crackle: most Width of crackle: 05-30mm 411 / 2800 * 100 = 14.68% |
| SUBJECTIVE EVALUATION | 3 | 3 | 3 | 3 |
| OBJECTIVE EVALUATION | b | b | b | b |
| TYPE OF PAVEMENT REHABILITATION | B | B | B | B |



DSC00693



DSC00694



DSC00695



DSC00696

THE BASIC DESIGN STUDY ON CONSTRUCTION OF EASTERN ARTERIAL ROAD IN MONGOLIA

JAPAN INTERNATIONAL COOPERATION AGENCY (JICA)

DEPARTMENT OF ROADS,
MINISTRY OF INFRASTRUCTURE,
THE GOVERNMENT OF MONGOLIA

PACIFIC CONSULTANTS INTERNATIONAL
JAPAN OVERSEAS CONSULTANTS

Scale

2500-2600

No.

D-23



2+600

| | | | | |
|---------------------------------|---|---|---|---|
| COMMENT | Volume of crackle: most Width of crackle: 10-60mm There is a pothole in + 2613 metre. (100*200*70mm) 314 / 2800 * 100 = 11.21% | Volume of crackle: most Width of crackle: 10-40mm 298 / 2800 * 100 = 10.64% | Volume of crackle: medium Width of crackle: 10-70mm 363 / 2800 * 12.96% | Volume of crackle: most Width of crackle: 05-30mm 403 / 2800 * 14.39% |
| SUBJECTIVE EVALUATION | 3 | 3 | 3 | 3 |
| OBJECTIVE EVALUATION | b, c | b | b | b |
| TYPE OF PAVEMENT REHABILITATION | B | B | B | B |



DSC00697



DSC00698



DSC00699



DSC00700

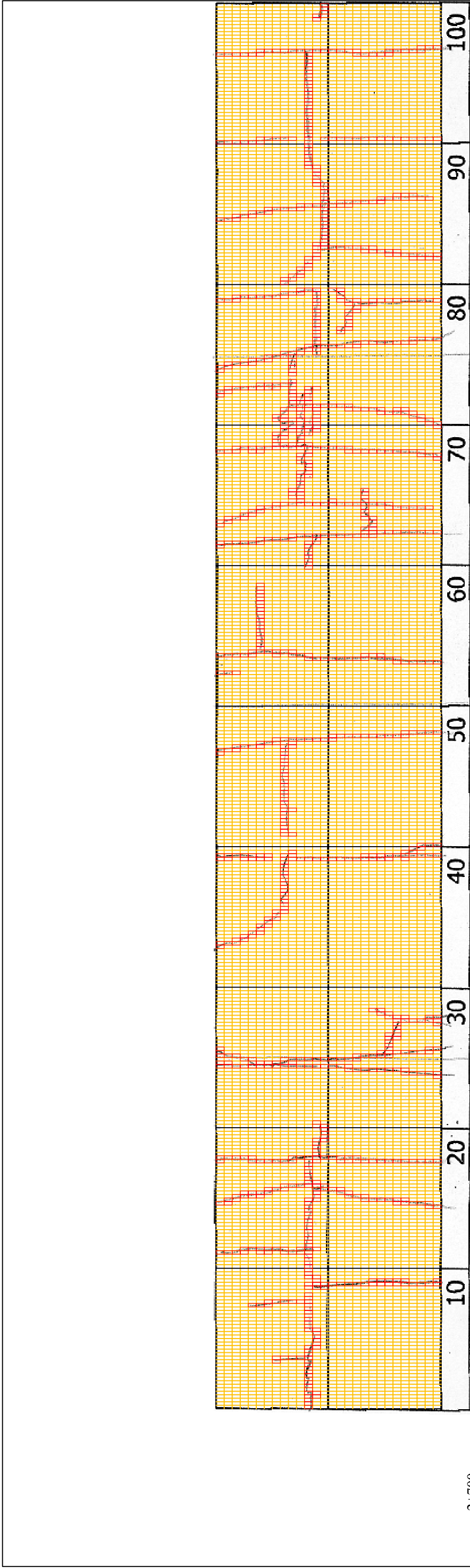
THE BASIC DESIGN STUDY ON CONSTRUCTION OF EASTERN ARTERIAL ROAD IN MONGOLIA

JAPAN INTERNATIONAL COOPERATION AGENCY (JICA)
MINISTRY OF INFRASTRUCTURE,
THE GOVERNMENT OF MONGOLIA

PACIFIC CONSULTANTS INTERNATIONAL
JAPAN OVERSEAS CONSULTANTS

Scale
2600-2700

No.
D-24



| | | | | |
|---------------------------------|--|--|---|---|
| 2+700 | Volume of crackle: most Width of crackle: 05-55mm 270 / 2800 * 100 = 9.64% | Volume of crackle: medium Width of crackle: 05-20mm 190 / 2800 * 100 = 6.79% | Volume of crackle: medium Width of crackle: 05-40mm 321 / 2800 * 100 = 11.46% | Volume of crackle: most Width of crackle: 05-45mm 283 / 2800 * 100 = 10.11% |
| COMMENT | | | | |
| SUBJECTIVE EVALUATION | 3 | 3 | 3 | 3 |
| OBJECTIVE EVALUATION | b | b | b | b |
| TYPE OF PAVEMENT REHABILITATION | B | B | B | B |



DSC00701



DSC00702

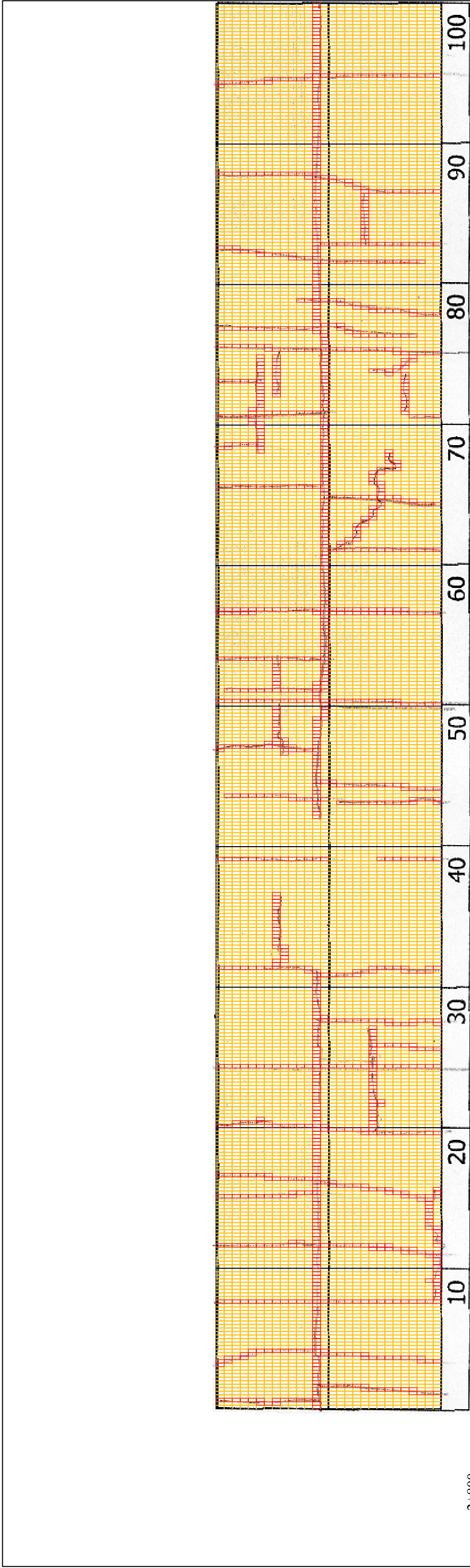


DSC00703



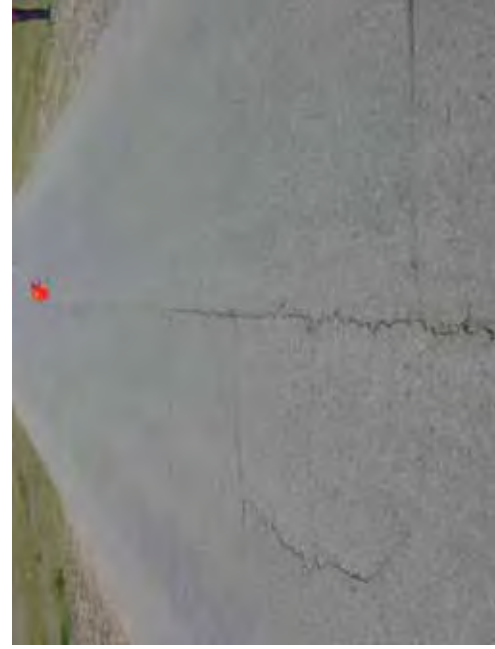
DSC00704

| | |
|---|---|
| THE BASIC DESIGN STUDY ON CONSTRUCTION OF EASTERN ARTERIAL ROAD IN MONGOLIA | |
| JAPAN INTERNATIONAL COOPERATION AGENCY (JICA) | DEPARTMENT OF ROADS, MINISTRY OF INFRASTRUCTURE, THE GOVERNMENT OF MONGOLIA |
| PACIFIC CONSULTANTS INTERNATIONAL JAPAN OVERSEAS CONSULTANTS | |
| Drawing title | Scale |
| 2700-2800 | No. D-25 |



2-800

| | | | |
|---------------------------------|---|---|--|
| COMMENT | Volume of crackle: medium Width of crackle: 05-35mm 385 / 2800 * 100 = 13.75% | Volume of crackle: less Width of crackle: 03-20mm 378 / 2800 = * 100 = 13.50% | Volume of crackle: less Width of crackle: 10-15mm 297 / 2800 * 100 = 9.96% |
| SUBJECTIVE EVALUATION | 3 | 3 | 3 |
| OBJECTIVE EVALUATION | b | b | b |
| TYPE OF PAVEMENT REHABILITATION | B | B | B |



DSC00705

DSC00706

DSC00707

DSC00708

| | |
|---|---|
| THE BASIC DESIGN STUDY ON CONSTRUCTION OF EASTERN ARTERIAL ROAD IN MONGOLIA | |
| JAPAN INTERNATIONAL COOPERATION AGENCY (JICA) | DEPARTMENT OF ROADS, MINISTRY OF INFRASTRUCTURE, THE GOVERNMENT OF MONGOLIA |
| PACIFIC CONSULTANTS INTERNATIONAL JAPAN OVERSEAS CONSULTANTS | |
| Drawing title | Scale |
| 2800-2900 | No. D-26 |