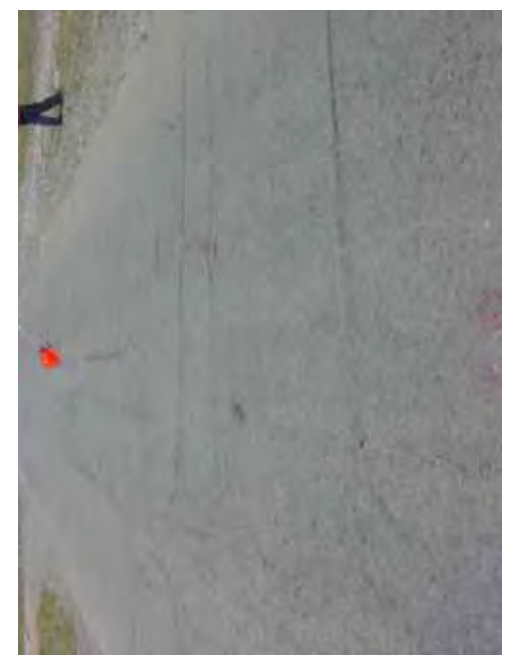


1+900	10	20	30	40	50	60	70	80	90	100
COMMENT	Volume of crackle: medium Width of crackle: 05-40mm 492 / 2800 * 100 = 17.57%									
SUBJECTIVE EVALUATION	Volume of crackle: medium Width of crackle: 10-160mm There is a pothole in + 1965 metre. (800*600*50mm) There is a pothole in + 1965 metre. (120*700*50mm) 397 / 2800 * 100 = 14.18%									
OBJECTIVE EVALUATION	Volume of crackle: medium Width of crackle: 05-20mm 377 / 2800 * 100 = 9.89%									
TYPE OF PAVEMENT REHABILITATION	C									



DSC00668



DSC00669

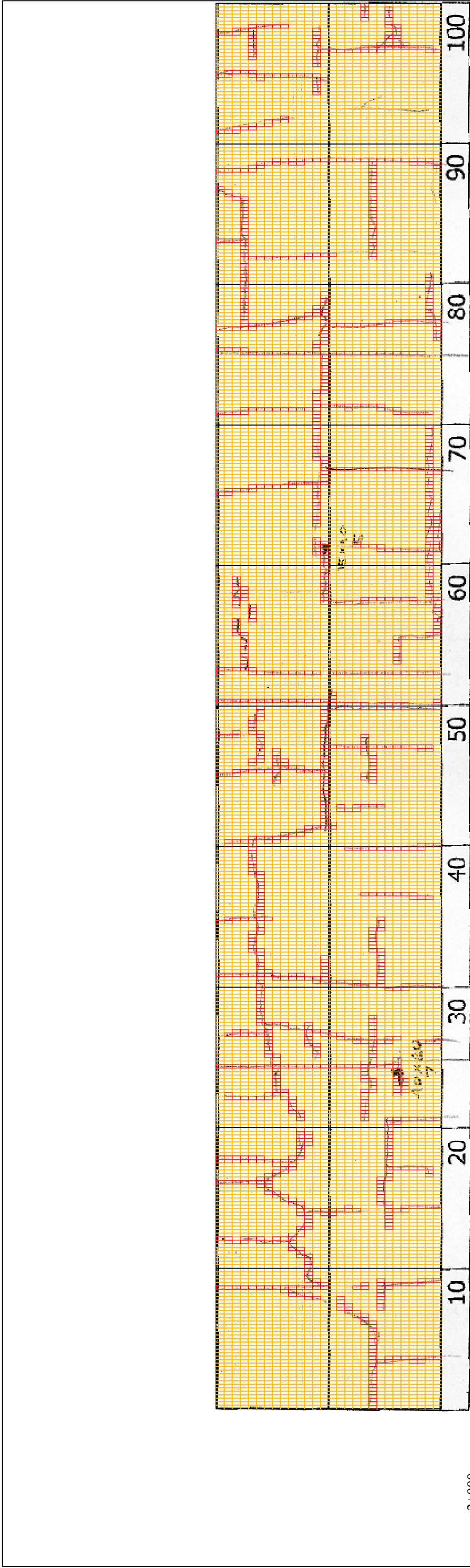


DSC00670



DSC00671

THE BASIC DESIGN STUDY ON CONSTRUCTION OF EASTERN ARTERIAL ROAD IN MONGOLIA	
JAPAN INTERNATIONAL COOPERATION AGENCY (JICA)	DEPARTMENT OF ROADS, MINISTRY OF INFRASTRUCTURE, THE GOVERNMENT OF MONGOLIA
PACIFIC CONSULTANTS INTERNATIONAL JAPAN OVERSEAS CONSULTANTS	
Drawing title	1900-2000
Scale	No.
	D-17



2+000	10	20	30	40	50	60	70	80	90	100
COMMENT	Volume of crackle: medium Width of crackle: 10-25mm There is a pothole in + 2025 metre. (400*200*70mm) 344 / 2800 * 100 = 12.29%									
SUBJECTIVE EVALUATION	Volume of crackle: medium Width of crackle: 05-50mm 371 / 2800 * 100 = 13.25%									
OBJECTIVE EVALUATION	Volume of crackle: less Width of crackle: 10-50mm There is a pothole in + 2062 metre. (150*100*50mm) 335 / 2800 * 100 = 11.96%									
TYPE OF PAVEMENT REHABILITATION	Volume of crackle: less Width of crackle: 05-20mm 328 / 2800 * 100 = 11.71%									



DSC00672



DSC00673



DSC00674



DSC00675

THE BASIC DESIGN STUDY ON CONSTRUCTION OF EASTERN ARTERIAL ROAD IN MONGOLIA

JAPAN INTERNATIONAL COOPERATION AGENCY (JICA)  
MINISTRY OF INFRASTRUCTURE,  
THE GOVERNMENT OF MONGOLIA

PACIFIC CONSULTANTS INTERNATIONAL  
JAPAN OVERSEAS CONSULTANTS

Drawing title  
2000-2100

Scale  
No.  
D-18



2+100	Volume of crackle: medium Width of crackle: 05-35mm 441 / 2800 * 100 = 15.75%	Volume of crackle: medium Width of crackle: 10-20mm 336 / 2800 * 100 = 12.00%	Volume of crackle: medium Width of crackle: 05-15mm 432 / 2800 * 100 = 15.32%	Volume of crackle: less Width of crackle: 05-20mm 387 / 2800 * 100 = 13.82%
COMMENT				
SUBJECTIVE EVALUATION	3	3	3	3
OBJECTIVE EVALUATION	b	b	b	b
TYPE OF PAVEMENT REHABILITATION	B	B	B	B



DSC00676



DSC00677



DSC00678



DSC00679

THE BASIC DESIGN STUDY ON CONSTRUCTION OF EASTERN ARTERIAL ROAD IN MONGOLIA

JAPAN INTERNATIONAL COOPERATION AGENCY (JICA)  
 DEPARTMENT OF ROADS,  
 MINISTRY OF INFRASTRUCTURE,  
 THE GOVERNMENT OF MONGOLIA

PACIFIC CONSULTANTS INTERNATIONAL  
 JAPAN OVERSEAS CONSULTANTS

Drawing title: 2100-2200  
 Scale: No. D-19



2+200

COMMENT	Volume of crackle: less Width of crackle: 05-15mm 402 / 2800 * 100 = 14.36%	Volume of crackle: less Width of crackle: 05-20mm 306 / 2800 * 100 = 10.93%	Volume of crackle: less Width of crackle: 05-45mm 395 / 2800 * 100 = 14.11%	Volume of crackle: medium Width of crackle: 10-50mm 426 / 2800 * 100 = 15.21%
SUBJECTIVE EVALUATION	3	3	3	3
OBJECTIVE EVALUATION	b	b	b	b
TYPE OF PAVEMENT REHABILITATION	B	B	B	B



DSC00680



DSC00681



DSC00682



DSC00683

THE BASIC DESIGN STUDY ON CONSTRUCTION OF EASTERN ARTERIAL ROAD IN MONGOLIA

JAPAN INTERNATIONAL COOPERATION AGENCY (JICA)

DEPARTMENT OF ROADS,  
MINISTRY OF INFRASTRUCTURE,  
THE GOVERNMENT OF MONGOLIA

PACIFIC CONSULTANTS INTERNATIONAL  
JAPAN OVERSEAS CONSULTANTS

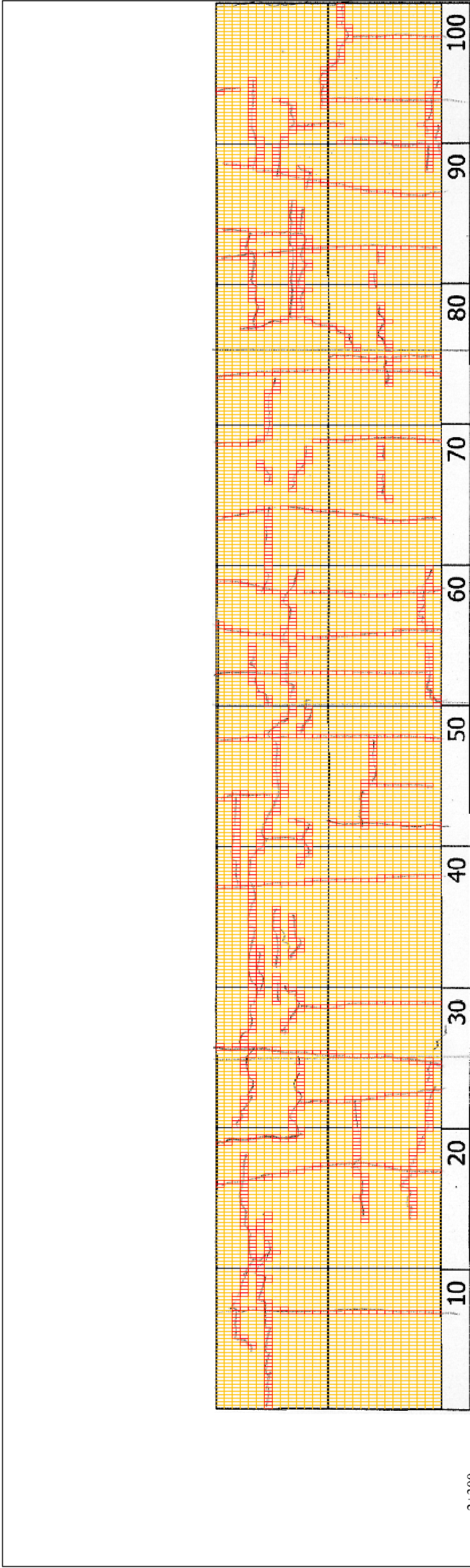
Drawing title

2200-2300

No.

D-20

Scale



2+300

COMMENT	Volume of crackle: medium Width of crackle: 10-50mm 356 / 2800 * 100 = 12.71%	Volume of crackle: medium Width of crackle: 10-60mm 403 / 2800 * 100 = 14.39%	Volume of crackle: medium Width of crackle: 05-39mm 389 / 2800 * 100 = 13.89%	Volume of crackle: medium Width of crackle: 10-35mm 406 / 2800 * 100 = 14.50%
SUBJECTIVE EVALUATION	3	3	3	3
OBJECTIVE EVALUATION	b	b	b	b
TYPE OF PAVEMENT REHABILITATION	B	B	B	B



DSC00684



DSC00685



DSC00686



DSC00687

THE BASIC DESIGN STUDY ON CONSTRUCTION OF EASTERN ARTERIAL ROAD IN MONGOLIA

JAPAN INTERNATIONAL COOPERATION AGENCY (JICA)

DEPARTMENT OF ROADS,  
MINISTRY OF INFRASTRUCTURE,  
THE GOVERNMENT OF MONGOLIA

PACIFIC CONSULTANTS INTERNATIONAL  
JAPAN OVERSEAS CONSULTANTS

Drawing title

2300-2400

No.

D-21