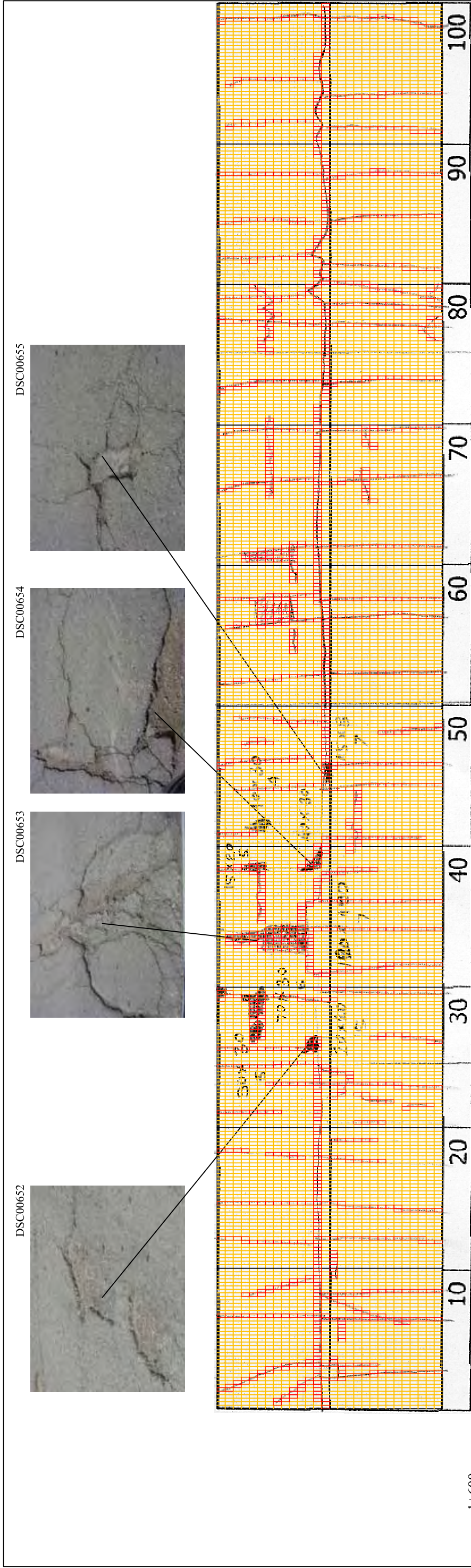


1+500	Volume of crackle: most Width of crackle: 10-100mm 441 / 2800 * 100 = 15.75%	Volume of crackle: most Width of crackle: 10-50mm There is a pothole in + 1530 metre. (800*200*40mm) There is a pothole in + 1543 metre. (800*100*40mm) There is a pothole in + 1547 metre. (200*100*50mm) 449 / 2800 * 100 = 16.04%	Volume of crackle: most Width of crackle: 10-60mm There is a pothole in + 1554 metre. (400*300*40mm) There is a pothole in + 1562 metre. (400*700*50mm) There is a pothole in + 1568 metre. (400*200*50mm) 512 / 2800 * 100 = 18.29%	Volume of crackle: most Width of crackle: 10-60mm 428 / 2800 * 100 = 15.29%
COMMENT				
SUBJECTIVE EVALUATION	4	4	4	4
OBJECTIVE EVALUATION	b, c, d	b, c	b, c	b, c
TYPE OF PAVEMENT REHABILITATION	C	C	C	C





1+600

COMMENT	Volume of crackle: most Width of crackle: 10-30mm 403 / 2800 * 100 = 14.39%	Volume of crackle: most Width of crackle: 10-90mm There is a pothole in + 1625 metre. (200*200*50mm) There is a pothole in + 1631 metre. (1200*1000*70mm) There is a pothole in + 1644 metre. (400*300mm) There is a pothole in + 1645 metre. (150*80*70mm) There are the most crackle in left side of the road. 430 / 2800 * 100 = 15.36%	Volume of crackle: most Width of crackle: 10-110mm 412 / 2800 * 100 = 14.71%	Volume of crackle: medium Width of crackle: 10-95mm 417 / 2800 * 100 = 14.89%
SUBJECTIVE EVALUATION	4	4	4	3
OBJECTIVE EVALUATION	b	b, c	b, c	b
TYPE OF PAVEMENT REHABILITATION	C	C	C	C



DSC00650



DSC00651



DSC00656



DSC00657

THE BASIC DESIGN STUDY ON CONSTRUCTION OF EASTERN ARTERIAL ROAD IN MONGOLIA

JAPAN INTERNATIONAL COOPERATION AGENCY (JICA)

DEPARTMENT OF ROADS,
MINISTRY OF INFRASTRUCTURE,
THE GOVERNMENT OF MONGOLIA

PACIFIC CONSULTANTS INTERNATIONAL
JAPAN OVERSEAS CONSULTANTS

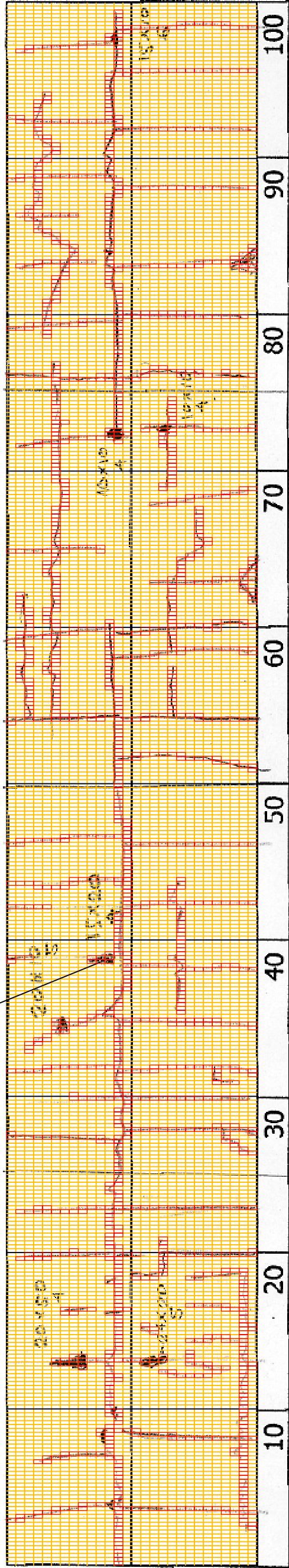
Drawing title

1600-1700

No.

D-14

DSC00660



1+700

COMMENT	Volume of crackle: most Width of crackle: 15-150mm There is a pothole in + 1715 metre. (240*200*50mm) There is a pothole in + 1715 metre. (200*500*40mm) 395 / 2800 * 100 = 14.11%	Volume of crackle: medium Width of crackle: 10-70mm There is a pothole in + 1773 metre. (100*100*40mm) There is a pothole in + 1774 metre. (100*100*40mm) 455 / 2800 * 100 = 16.25%	Volume of crackle: most Width of crackle: 05-100mm There is a pothole in + 1743 metre. (150*200*40mm) There is a pothole in + 1737 metre. (200*100*50mm) 381 / 2800 * 100 = 13.61%	Volume of crackle: most Width of crackle: 10-150mm There is a pothole in + 1798 metre. (150*100*60mm) 403 / 2800 * 100 = 14.39%
SUBJECTIVE EVALUATION	4	4	4	
OBJECTIVE EVALUATION	b, c	b, c, d	b, c	
TYPE OF PAVEMENT REHABILITATION	C	C	C	



DSC00658



DSC00659



DSC00661



DSC00662

THE BASIC DESIGN STUDY ON CONSTRUCTION OF EASTERN ARTERIAL ROAD IN MONGOLIA

JAPAN INTERNATIONAL COOPERATION AGENCY (JICA)

MINISTRY OF INFRASTRUCTURE,
THE GOVERNMENT OF MONGOLIA

PACIFIC CONSULTANTS INTERNATIONAL
JAPAN OVERSEAS CONSULTANTS

Scale

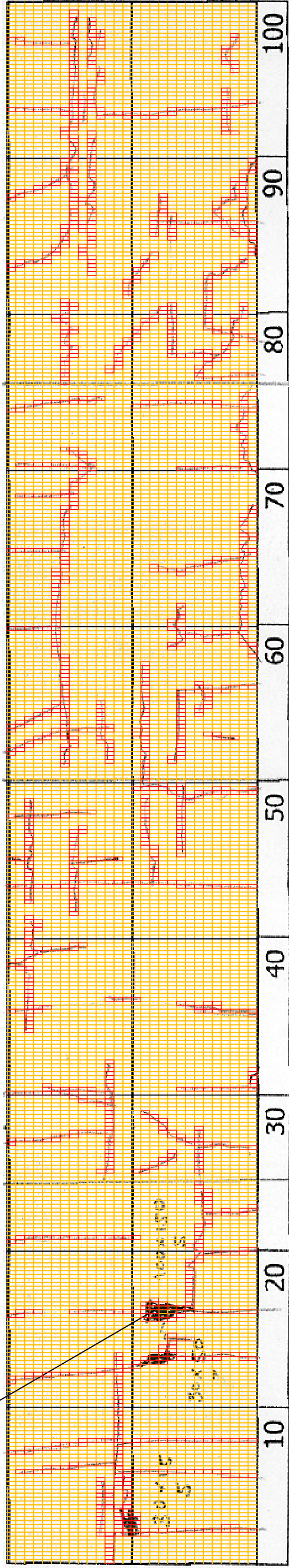
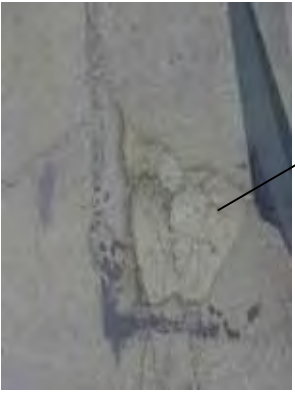
No.

D-15

1700-1800

Drawing title

DSC00664



1-800

COMMENT	Volume of crackle: most Width of crackle: 10-50mm There is a pothole in + 1804 metre. (300*150*350mm) There is a pothole in + 1814 metre. (300*500*70mm) There is a pothole in + 1816 metre. (1000*1500*50mm) 333 / 2800 * 100 = 11.89%	Volume of crackle: medium Width of crackle: 05-25mm	Volume of crackle: medium Width of crackle: 05-20mm	Volume of crackle: medium Width of crackle: 05.20mm
SUBJECTIVE EVALUATION	4	3	3	3
OBJECTIVE EVALUATION	b, c	b	b	b
TYPE OF PAVEMENT REHABILITATION	C	C	C	C



DSC00663



DSC00665



DSC00666



DSC00667

THE BASIC DESIGN STUDY ON CONSTRUCTION OF EASTERN ARTERIAL ROAD IN MONGOLIA

JAPAN INTERNATIONAL COOPERATION AGENCY (JICA)
MINISTRY OF INFRASTRUCTURE,
THE GOVERNMENT OF MONGOLIA

PACIFIC CONSULTANTS INTERNATIONAL
JAPAN OVERSEAS CONSULTANTS

Drawing title
1800-1900
Scale
No.
D-16