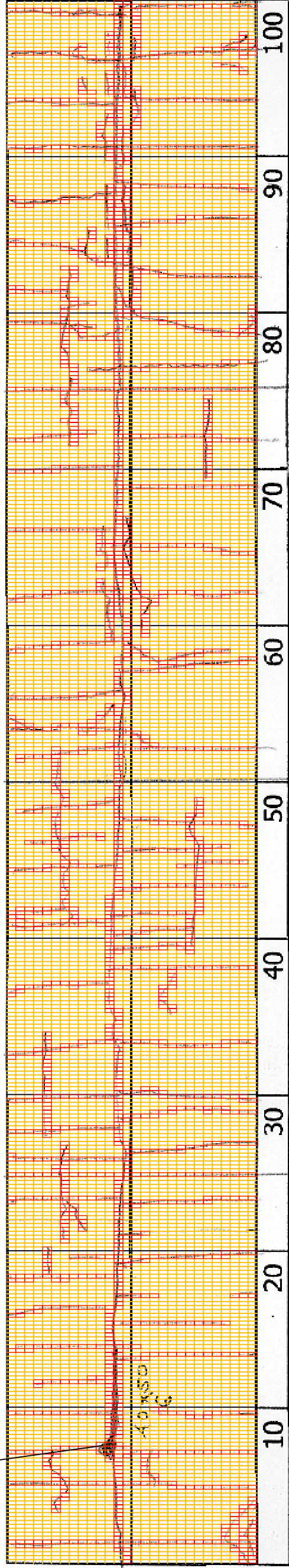


DSC00619



1+100

COMMENT	Volume of crackle: most Width of crackle: 10-50mm There are the most crackle in central axis of the road. 599 / 2800 * 100 = 21.31%	Volume of crackle: medium Width of crackle: 05-100mm There are the medium crackle in central axis of the road. 463 / 2800 * 100 = 16.52%	Volume of crackle: medium Width of crackle: 05-100mm There are the medium crackle in central axis of the road. 540 / 2800 * 100 = 19.29%	Volume of crackle: most Width of crackle: 05-110mm There is a pothole in + 1110 metre. (400*500*60mm) There are the most crackle in central axis of the road. 516 / 2800 * 100 = 18.43%
SUBJECTIVE EVALUATION	3	3	3	3
OBJECTIVE EVALUATION	b	b	b	b, c
TYPE OF PAVEMENT REHABILITATION	B	B	B	B



DSC00618



DSC00620



DSC00621



DSC00622

THE BASIC DESIGN STUDY ON CONSTRUCTION OF EASTERN ARTERIAL ROAD IN MONGOLIA

JAPAN INTERNATIONAL COOPERATION AGENCY (JICA)
MINISTRY OF INFRASTRUCTURE,
THE GOVERNMENT OF MONGOLIA

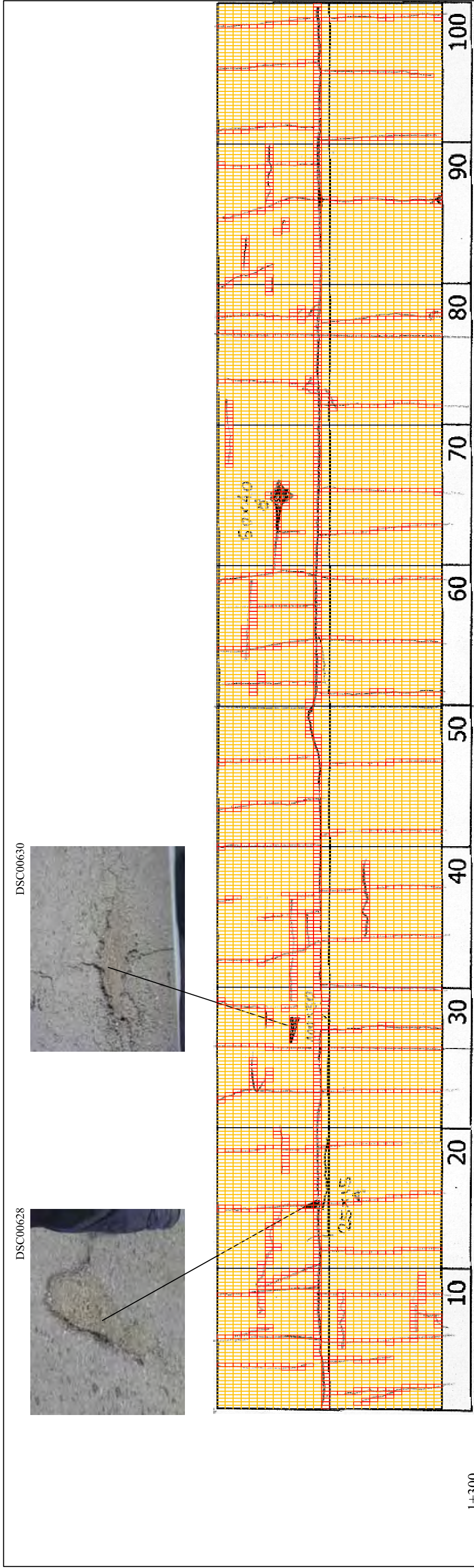
PACIFIC CONSULTANTS INTERNATIONAL
JAPAN OVERSEAS CONSULTANTS
Drawing title
1100-1200
Scale
No.
D-9



1+200	10	20	30	40	50	60	70	80	90	100
COMMENT	Volume of crackle: most Width of crackle: 10-30mm There are the most crackle in central axis of the road. 568 / 2800 * 100 = 20.29 %	Volume of crackle: most Width of crackle: 10-40mm There are the most crackle in left side of the road. 555 / 2800 * 100 = 19.82 %	Volume of crackle: most Width of crackle: 05-35mm There is a pothole in + 1262 metre. (110*70*40mm) There are the most crackle in central axis of the road. 423 / 2800 * 100 = 15.11 %	Volume of crackle: medium Width of crackle: 10-30mm There are the most crackle in central axis of the road. 548 / 2800 * 100 = 19.57 %						
SUBJECTIVE EVALUATION	4	4	4	4						
OBJECTIVE EVALUATION	b	b	b, c	b, c						
TYPE OF PAVEMENT REHABILITATION	B	B	B	B						



THE BASIC DESIGN STUDY ON CONSTRUCTION OF EASTERN ARTERIAL ROAD IN MONGOLIA	
JAPAN INTERNATIONAL COOPERATION AGENCY (JICA)	DEPARTMENT OF ROADS,
PACIFIC CONSULTANTS INTERNATIONAL JAPAN OVERSEAS CONSULTANTS	MINISTRY OF INFRASTRUCTURE, THE GOVERNMENT OF MONGOLIA
Drawing title 1200-1300	Scale D-10



1+300

COMMENT	Volume of crackle: most Width of crackle: 05-30mm There is a pothole in + 1319 metre. (250*150*40mm) There is a pothole in + 1325 metre. (1000*300*70mm) 441 / 2800 * 100 = 15.75%	Volume of crackle: most Width of crackle: 05-15mm There are the most crackle in central axis of the road. 338 / 2800 * 100 = 12.07%	Volume of crackle: most Width of crackle: 05-35mm There is a pothole in + 1367 metre. (600*400*80mm) There are the most crackle in central axis of the road. 362 / 2800 * 100 = 12.93%	Volume of crackle: medium Width of crackle: 10-80mm There are the most crackle in central axis of the road. 369 / 2800 * 100 = 13.18%
SUBJECTIVE EVALUATION	4	4	4	
OBJECTIVE EVALUATION	b, c	b, c, d	b, c, d	
TYPE OF PAVEMENT REHABILITATION	C	C	C	



DSC00627



DSC00629



DSC00630



DSC00631

THE BASIC DESIGN STUDY ON CONSTRUCTION OF EASTERN ARTERIAL ROAD IN MONGOLIA	
JAPAN INTERNATIONAL COOPERATION AGENCY (JICA)	DEPARTMENT OF ROADS, MINISTRY OF INFRASTRUCTURE, THE GOVERNMENT OF MONGOLIA
PACIFIC CONSULTANTS INTERNATIONAL JAPAN OVERSEAS CONSULTANTS	
Drawing title	Scale
1300-1400	No.
	D-11

