

0+700	Volume of crackle: most Width of crackle: 10-50mm There are the most crackle in central axis of the road. 489 / 2800 * 100 = 17.46%	Volume of crackle: medium Width of crackle: 08-25 There are the most crackle in central axis of the road. 326 / 2800 * 100 = 11.64%	Volume of crackle: medium Width of crackle: 20-60mm There are the most crackle in central axis of the road. 329 / 2800 * 100 = 11.75%	Volume of crackle: most Width of crackle: 15-70mm There are the most crackle in central axis of the road. 477 / 2800 * 100 = 17.04%
COMMENT				
SUBJECTIVE EVALUATION	3	3	3	3
OBJECTIVE EVALUATION	a, b	b	b	b
TYPE OF PAVEMENT REHABILITATION	D	B	B	B



DSC00599



DSC00600



DSC00601



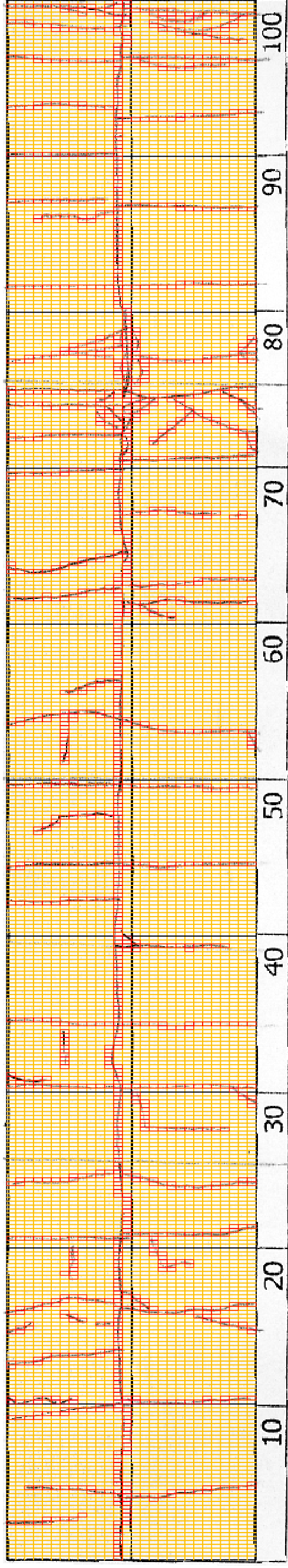
DSC00602

THE BASIC DESIGN STUDY ON CONSTRUCTION OF EASTERN ARTERIAL ROAD IN MONGOLIA

JAPAN INTERNATIONAL COOPERATION AGENCY (JICA)
MINISTRY OF INFRASTRUCTURE,
THE GOVERNMENT OF MONGOLIA

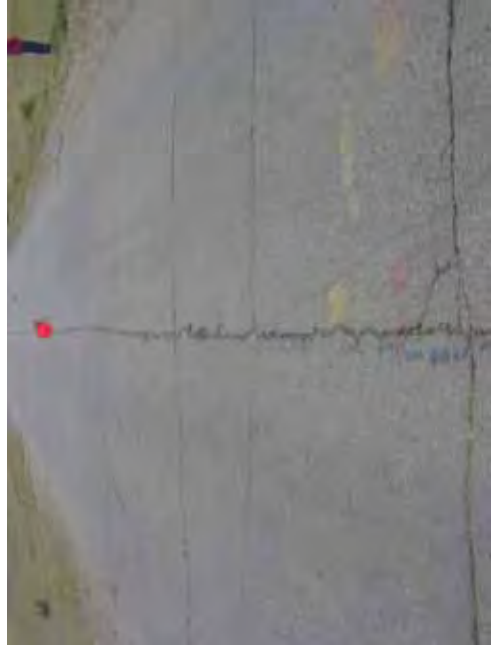
PACIFIC CONSULTANTS INTERNATIONAL
JAPAN OVERSEAS CONSULTANTS

Drawing title: 700-800
Scale: No. D-5



0-800

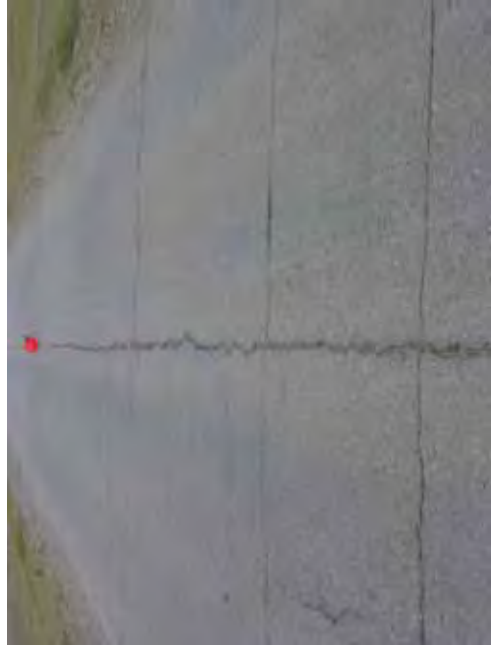
COMMENT	Volume of crackle: medium Width of crackle: 10-50mm There are the most crackle in central axis of the road. $429 / 2800 * 100 = 15.32\%$	Volume of crackle: medium Width of crackle: 10-50mm There are the most crackle in central axis of the road. $428 / 2800 * 100 = 15.29\%$	Volume of crackle: medium Width of crackle: 20-30mm There are the most crackle in central axis of the road. $312 / 2800 * 100 = 11.14\%$	Volume of crackle: medium Width of crackle: 10-80mm There are the most crackle in central axis of the road. $368 / 2800 * 100 = 13.14\%$
SUBJECTIVE EVALUATION	3	3	3	3
OBJECTIVE EVALUATION	b	b	b	b
TYPE OF PAVEMENT REHABILITATION	B	B	B	B



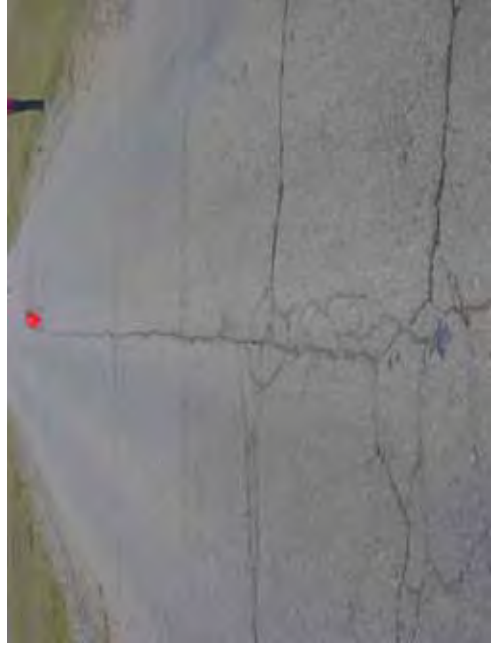
DSC00603



DSC00604



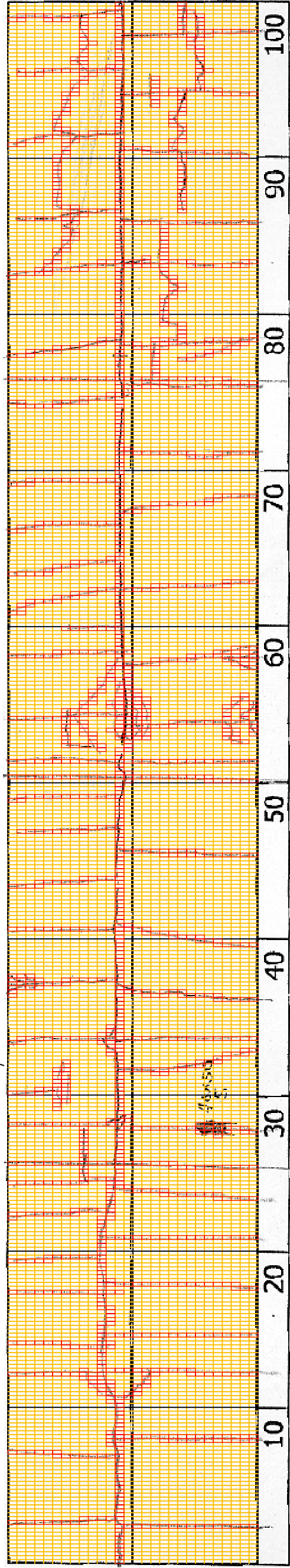
DSC00605



DSC00606

THE BASIC DESIGN STUDY ON CONSTRUCTION OF EASTERN ARTERIAL ROAD IN MONGOLIA	
JAPAN INTERNATIONAL COOPERATION AGENCY (JICA)	DEPARTMENT OF ROADS, MINISTRY OF INFRASTRUCTURE, THE GOVERNMENT OF MONGOLIA
PACIFIC CONSULTANTS INTERNATIONAL JAPAN OVERSEAS CONSULTANTS	
Drawing title	Scale
800-900	No.
	D-6

DSC00609



0+900

COMMENT	Volume of crackle: most Width of crackle: 10-100mm There are the most crackle in central axis of the road. $360 / 2800 * 100 = 12.86\%$	Volume of crackle: medium Width of crackle: 10-50mm There is a pothole in + 926 metre. (400*500*50mm) There are the most crackle in central axis of the road. $403 / 2800 * 100 = 14.39\%$	Volume of crackle: most Width of crackle: 10-70mm There are the most crackle in central axis of the road. $478 / 2800 * 100 = 17.07\%$	Volume of crackle: medium Width of crackle: 10-80mm There are the most crackle in central axis of the road. $549 / 2800 * 100 = 19.61\%$
SUBJECTIVE EVALUATION	3	3	3	3
OBJECTIVE EVALUATION	b	b, c	b	b
TYPE OF PAVEMENT REHABILITATION	B	B	B	B



DSC00607



DSC00608



DSC00610



DSC00611

THE BASIC DESIGN STUDY ON CONSTRUCTION OF EASTERN ARTERIAL ROAD IN MONGOLIA

JAPAN INTERNATIONAL COOPERATION AGENCY (JICA)

MINISTRY OF INFRASTRUCTURE,
THE GOVERNMENT OF MONGOLIA

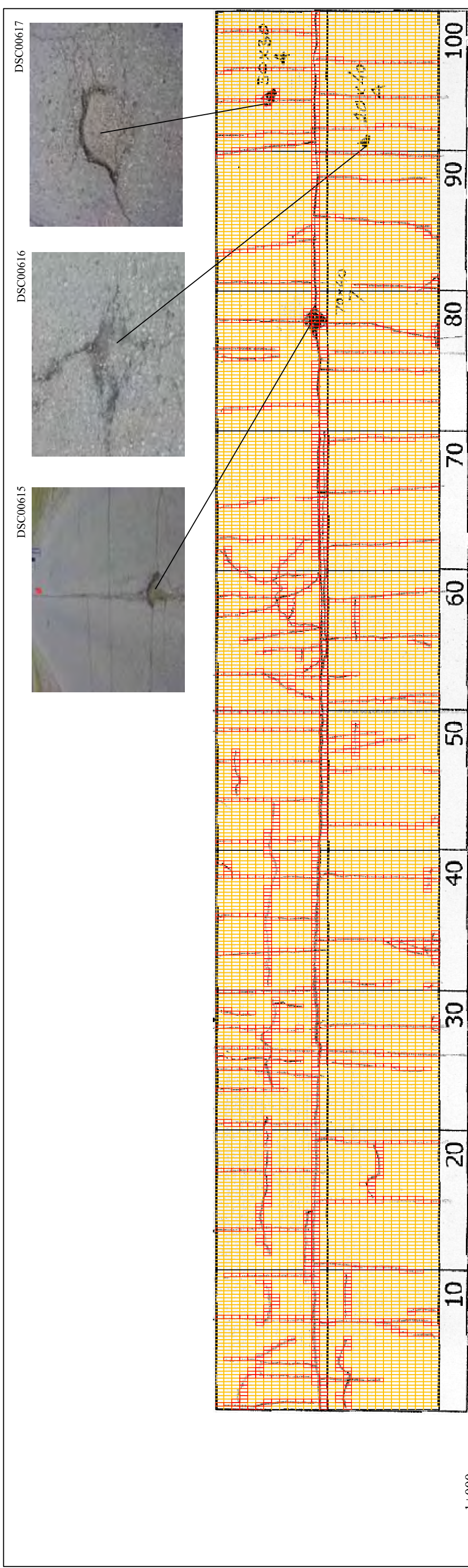
PACIFIC CONSULTANTS INTERNATIONAL
JAPAN OVERSEAS CONSULTANTS

Drawing title

900-1000

No.

D-7



1+000	10	20	30	40	50	60	70	80	90	100
COMMENT	Volume of crackle: most Width of crackle: 10-60mm There are the most crackle in central axis of the road. $501 / 2800 * 100 = 17.89\%$									
SUBJECTIVE EVALUATION	Volume of crackle: most Width of crackle: 05-60mm There are the most crackle in central axis of the road. $538 / 2800 * 100 = 19.21\%$									
OBJECTIVE EVALUATION	Volume of crackle: most Width of crackle: 05-90mm There are the most crackle in central axis of the road. $495 / 2800 * 100 = 17.68\%$									
TYPE OF PAVEMENT REHABILITATION	Volume of crackle: medium Width of crackle: 05-100mm There is a pothole in + 1076 metre. (700*400*70mm) There is a pothole in + 1093 metre. (200*400*40mm) There is a pothole in + 1094 metre. (500*300*40mm) There are the medium crackle in central axis of the road. $407 / 2800 * 100 = 14.54\%$									



THE BASIC DESIGN STUDY ON CONSTRUCTION OF EASTERN ARTERIAL ROAD IN MONGOLIA

JAPAN INTERNATIONAL COOPERATION AGENCY (JICA)
 DEPARTMENT OF ROADS,
 MINISTRY OF INFRASTRUCTURE,
 THE GOVERNMENT OF MONGOLIA

PACIFIC CONSULTANTS INTERNATIONAL
 JAPAN OVERSEAS CONSULTANTS

Drawing title: 1000-1100
 Scale: No. D-8