

STATION	FINISHED GRADE	ORIGINAL GROUND	HORIZONTAL CURVATURE	VERTICAL CURVATURE	SUPERELEVATION
327+900	1034.691	1033.927			
	1034.423	1033.908			
	1034.261	1033.890			
	1034.098	1033.871			
328+000	1033.936	1033.853			
	1033.783	1033.718			
	1033.690	1033.584			
	1033.667	1033.449			
	1033.714	1033.315			
+100	1033.831	1033.180			
	1034.003	1033.166			
	1034.140	1033.153			
	1034.228	1033.139			
	1034.267	1033.126			
	1034.256	1033.112			
+200	1034.203	1033.180			
	1034.143	1033.248			
	1034.083	1033.222			
	1034.021	1032.991			
	1033.955	1032.780			
+300	1033.955	1032.760			
	1033.885	1032.552			
	1033.811	1032.345			
	1033.733	1032.137			
	1033.651	1031.930			
	1033.565	1031.722			
+400	1033.475	1031.726			
	1033.381	1031.730			
	1033.283	1031.735			
	1033.183	1031.739			
	1033.083	1031.743			
+500	1032.983	1031.619			
	1032.883	1031.495			
	1032.783	1031.372			
	1032.683	1031.248			
+600	1032.583	1031.124			

STRAIGHT
LVC = 100.00 m g = -0.300%
LVC = 200.00 m g = -0.500%

--- N.C. ---

THE BASIC DESIGN STUDY ON CONSTRUCTION OF EASTERN ARTERIAL ROAD IN MONGOLIA

JAPAN INTERNATIONAL COOPERATION AGENCY (JICA)
PACIFIC CONSULTANTS INTERNATIONAL
JAPAN OVERSEAS CONSULTANTS

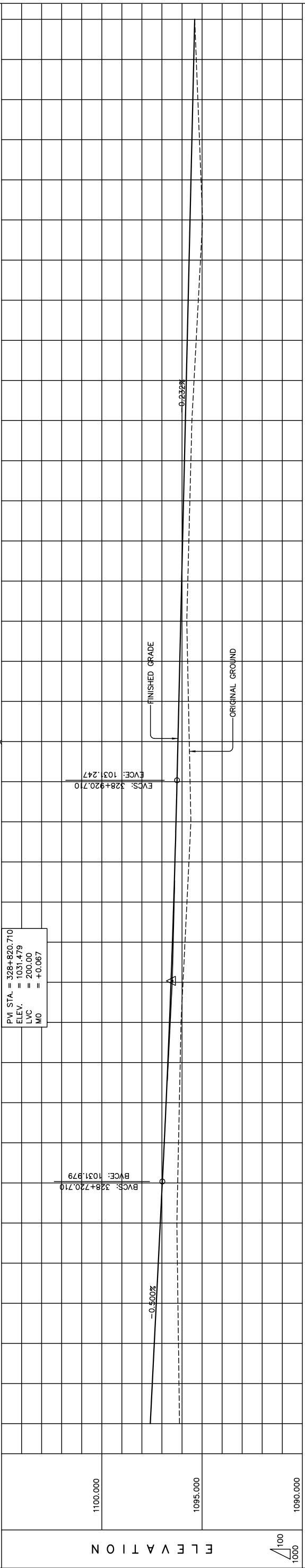
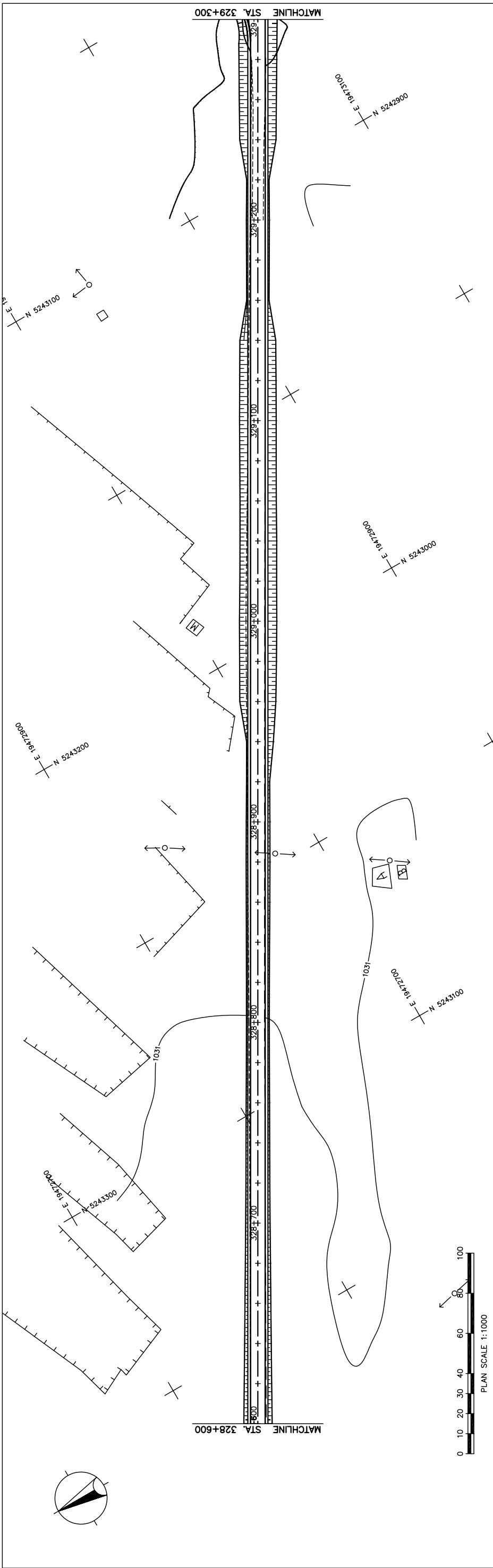
DEPARTMENT OF ROADS,
MINISTRY OF INFRASTRUCTURE,
THE GOVERNMENT OF MONGOLIA

Drawing title
PLAN AND PROFILE
STA. 327+900 - STA. 328+600
(SECTION-6)

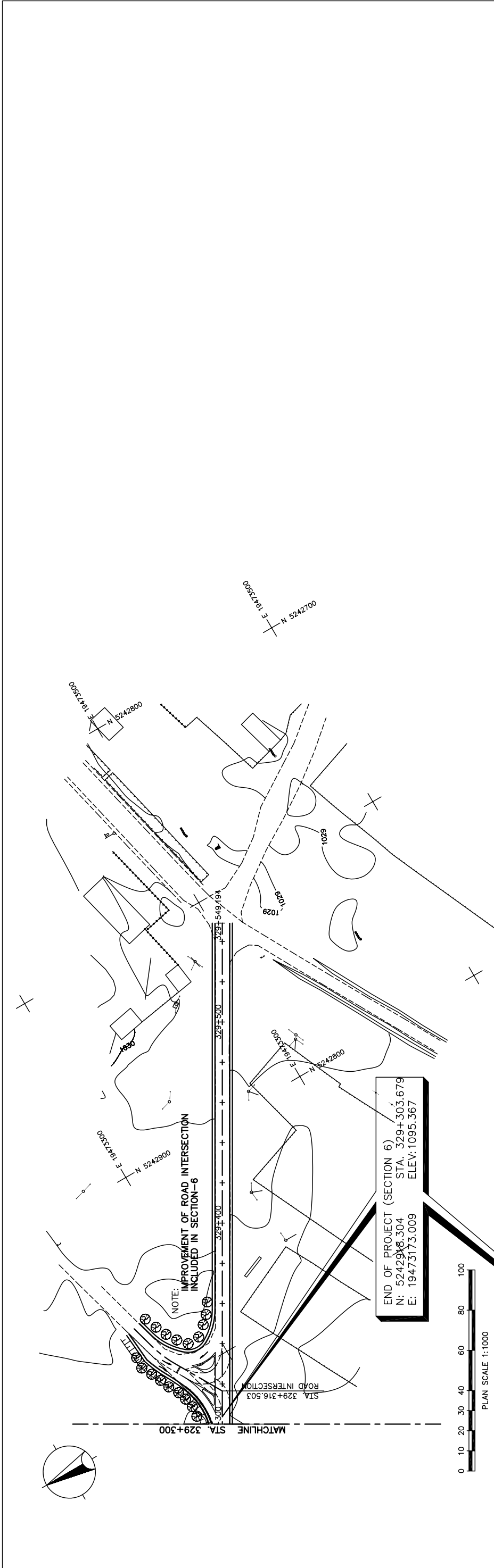
Scale
AS SHOWN

Sheet No.
C-39
39/41

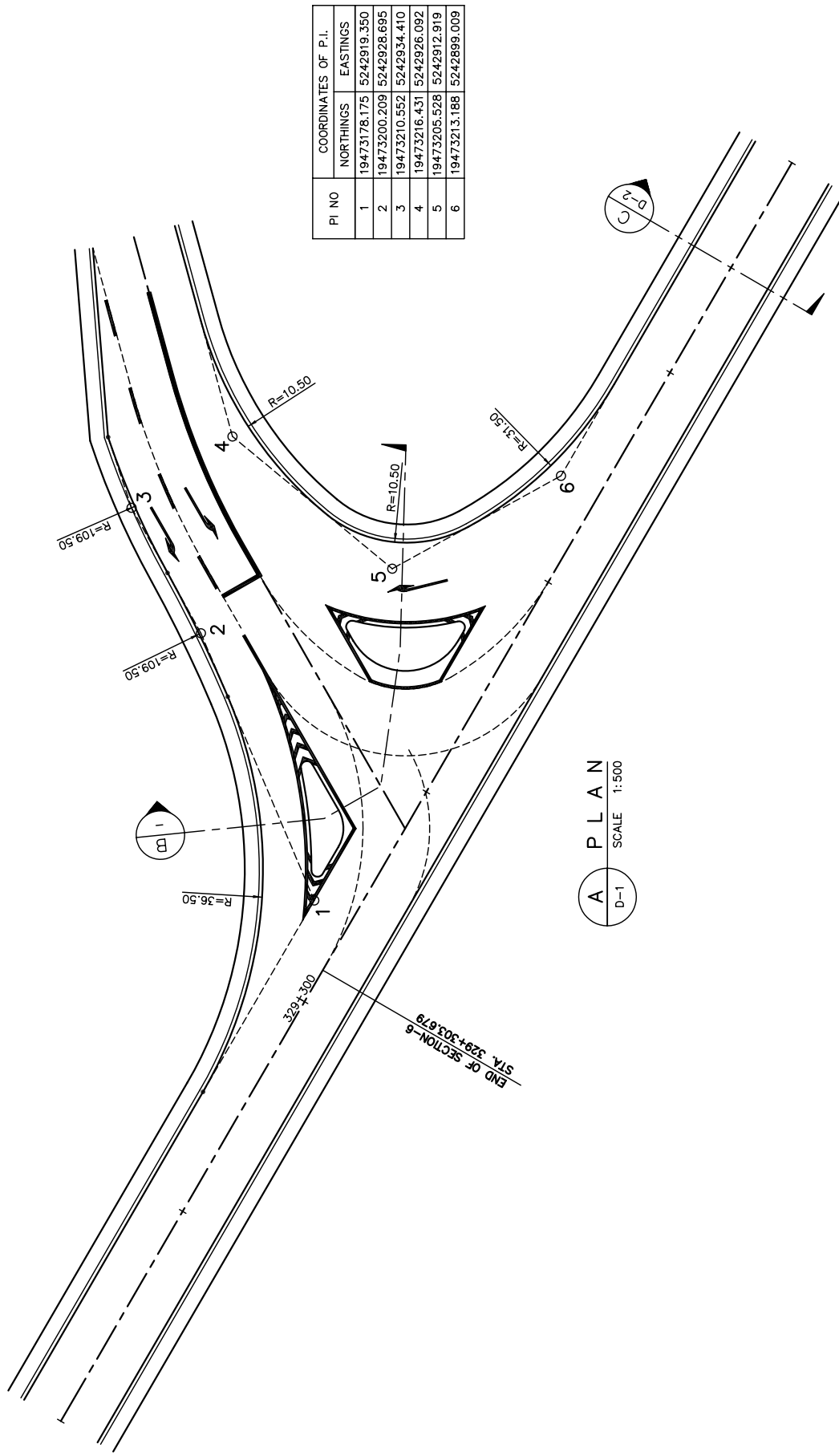
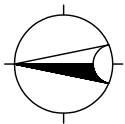
図 3-2-3-89 全体平面・縦断面 (Section VI Sta.327+900-Sta.328+600)



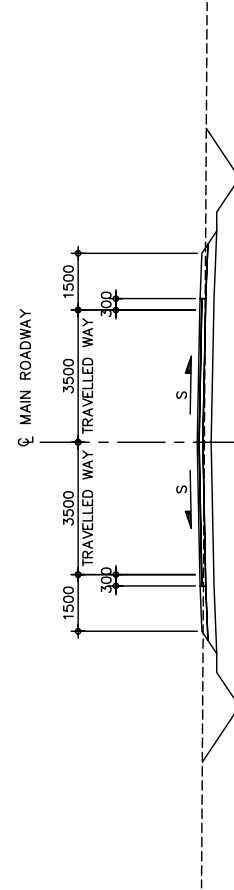
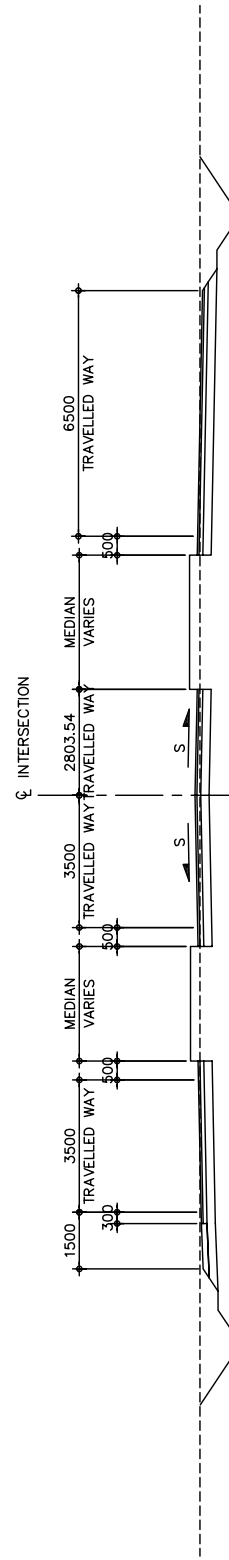
STATION	FINISHED GRADE	ORIGINAL GROUND	HORIZONTAL CURVATURE	VERTICAL CURVATURE	SUPERELEVATION
328+600	1031.124	1032.583			
	1031.151	1032.483			
	1031.177	1032.383			
	1031.204	1032.283			
	1031.230	1032.183			
	1031.257	1032.083			
	1031.283	1031.983			
	1031.310	1031.883			
	1031.337	1031.783			
	1031.364	1031.683			
	1031.391	1031.583			
	1031.418	1031.483			
	1031.445	1031.383			
	1031.472	1031.283			
	1031.499	1031.183			
	1031.526	1031.083			
	1031.553	1030.983			
	1031.580	1030.883			
	1031.607	1030.783			
	1031.634	1030.683			
	1031.661	1030.583			
	1031.688	1030.483			
	1031.715	1030.383			
	1031.742	1030.283			
	1031.769	1030.183			
	1031.796	1030.083			
	1031.823	1030.000			
	1031.850	1030.000			
	1031.877	1030.000			
	1031.904	1030.000			
	1031.931	1030.000			
	1031.958	1030.000			
	1031.985	1030.000			
	1032.012	1030.000			
	1032.039	1030.000			
	1032.066	1030.000			
	1032.093	1030.000			
	1032.120	1030.000			
	1032.147	1030.000			
	1032.174	1030.000			
	1032.201	1030.000			
	1032.228	1030.000			
	1032.255	1030.000			
	1032.282	1030.000			
	1032.309	1030.000			
	1032.336	1030.000			
	1032.363	1030.000			
	1032.390	1030.000			
	1032.417	1030.000			
	1032.444	1030.000			
	1032.471	1030.000			
	1032.498	1030.000			
	1032.525	1030.000			
	1032.552	1030.000			
	1032.579	1030.000			
	1032.606	1030.000			
	1032.633	1030.000			
	1032.660	1030.000			
	1032.687	1030.000			
	1032.714	1030.000			
	1032.741	1030.000			
	1032.768	1030.000			
	1032.795	1030.000			
	1032.822	1030.000			
	1032.849	1030.000			
	1032.876	1030.000			
	1032.903	1030.000			
	1032.930	1030.000			
	1032.957	1030.000			
	1032.984	1030.000			
	1033.011	1030.000			
	1033.038	1030.000			
	1033.065	1030.000			
	1033.092	1030.000			
	1033.119	1030.000			
	1033.146	1030.000			
	1033.173	1030.000			
	1033.200	1030.000			
	1033.227	1030.000			
	1033.254	1030.000			
	1033.281	1030.000			
	1033.308	1030.000			
	1033.335	1030.000			
	1033.362	1030.000			
	1033.389	1030.000			
	1033.416	1030.000			
	1033.443	1030.000			
	1033.470	1030.000			
	1033.497	1030.000			
	1033.524	1030.000			
	1033.551	1030.000			
	1033.578	1030.000			
	1033.605	1030.000			
	1033.632	1030.000			
	1033.659	1030.000			
	1033.686	1030.000			
	1033.713	1030.000			
	1033.740	1030.000			
	1033.767	1030.000			
	1033.794	1030.000			
	1033.821	1030.000			
	1033.848	1030.000			
	1033.875	1030.000			
	1033.902	1030.000			
	1033.929	1030.000			
	1033.956	1030.000			
	1033.983	1030.000			
	1034.010	1030.000			
	1034.037	1030.000			
	1034.064	1030.000			
	1034.091	1030.000			
	1034.118	1030.000			
	1034.145	1030.000			
	1034.172	1030.000			
	1034.199	1030.000			
	1034.226	1030.000			
	1034.253	1030.000			
	1034.280	1030.000			
	1034.307	1030.000			
	1034.334	1030.000			
	1034.361	1030.000			
	1034.388	1030.000			
	1034.415	1030.000			
	1034.442	1030.000			
	1034.469	1030.000			
	1034.496	1030.000			
	1034.523	1030.000			
	1034.550	1030.000			
	1034.577	1030.000			
	1034.604	1030.000			
	1034.631	1030.000			
	1034.658	1030.000			
	1034.685	1030.000			
	1034.712	1030.000			
	1034.739	1030.000			
	1034.766	1030.000			
	1034.793	1030.000			
	1034.820	1030.000			
	1034.847	1030.000			
	1034.874	1030.000			
	1034.901	1030.000			
	1034.928	1030.000			
	1034.955	1030.000			
	1034.982	1030.000			
	1035.009	1030.000			
	1035.036	1030.000			
	1035.063	1030.000			
	1035.090	1030.000			
	1035.117	1030.000			
	1035.144	1030.000			
	1035.171	1030.000			
	1035.198	1030.000			
	1035.225	1030.000			
	1035.252	1030.000			
	1035.279	1030.000			
	1035.306	1030.000			
	1035.333	1030.000			
	1035.360	1030.000			
	1035.387	1030.000			
	1035.414	1030.000			
	1035.441	1030.000			
	1035.468	1030.000			
	1035.495	1030.000			
	1035.522	1030.000			
	1035.549	1030.000			
	1035.576	1030.000			
	1035.603	1030.000			
	1035.630	1030.000			
	1035.657	1030.000			
	1035.684	1030.000			
	1035.711	1030.000			
	1035.738	1030.000			
	1035.765	1030.000			
	1035.792	1030.000			
	1035.819	1030.000			
	1035.846	1030.000			
	1035.873	1030.000			
	1035.900	1030.000			
	1035.927	1030.000			
	1035.954	1030.000			
	1035.981	1030.000			
	1036.008	1030.000			
	1036.035	1030.000			
	1036.062	1030.000			
	1036.089	1030.000			
	1036.116	1030.000			
	1036.143	1030.000			
	1036.170	1030.000			
	1036.197	1030.000			
	1036.224	1030.000			
	1036.251	1030.000			
	1036.278	1030.000			
	1036.305	1030.000			
	1036.332	1030.000			
	1036.359	1030.000			
	1036.386	1030.000			
	1036.413	1030.000			
	1036.440	1030.000			
	1036.467	1030.000			
	1036.494	1030.000			
	1036.521	1030.000			
	1036.548	1030.000			
	1036.575	1030.000			
	1036.602	1030.000			
	1036.629	1030.000			
	1036.656	1030.000			
	1036.683	1030.000			
	1036.710	1030.000			
	1036.737	1030.000			
	1036.764	1030.000			
	1036.791	1030.000			
	1036.818	1030.000			
	1036.845	1030.000			
	1036.872	1030.000			
	1036.899	1030.000			
	1036.926	1030.000			
	1036.953	1030.000			
	1036.980	1030.000			
	1037.007	1030.000			
	1037.034	1030.000			
	1037.061	1030.000			
	1037.088	1030.000			
	1037.115	1030.000			
	1037.142	1030.000			
	1037.169	1030.000			
	1037.196	1030.000			
	1037.223	1030.000			
	1037.250	1030.000			
	1037.277	1030.000			
	1037.304	1030.000			
	1037.331	1030.000			
	1037.358	1030.000			
	1037.385	1030.000			
	1037.412	1030.000			
	1037.439	1030.000			
	1037.466	1030.000			
	1037.493	1030.000			
	1037.520	1030.000			
	1037.547	1030.000			
	1037.574	1030.000			
	1037.601	1030.000			
	1037.628	1030.000			
	1037.655	1030.000			
	1037.682	1030.000			
	1037.709	1030.000			
	1037.736	1030.000			
	1037.763	1030.000			
	1037.790	1030.000			
	1037.817	1030.000			



ELEVATION	STATION									
	329+300	329+307	329+314	329+321	329+328	329+335	329+342	329+349	329+356	329+363
1100.000										
1095.000										
1090.000										
1085.000										
1080.000										
1075.000										
1070.000										
1065.000										
1060.000										
1055.000										
1050.000										
1045.000										
1040.000										
1035.000										
1030.000										
1025.000										
1020.000										
1015.000										
1010.000										
1005.000										
1000.000										
995.000										
990.000										
985.000										
980.000										
975.000										
970.000										
965.000										
960.000										
955.000										
950.000										
945.000										
940.000										
935.000										
930.000										
925.000										
920.000										
915.000										
910.000										
905.000										
900.000										
895.000										
890.000										
885.000										
880.000										
875.000										
870.000										
865.000										
860.000										
855.000										
850.000										
845.000										
840.000										
835.000										
830.000										
825.000										
820.000										
815.000										
810.000										
805.000										
800.000										
795.000										
790.000										
785.000										
780.000										
775.000										
770.000										
765.000										
760.000										
755.000										
750.000										
745.000										
740.000										
735.000										
730.000										
725.000										
720.000										
715.000										
710.000										
705.000										
700.000										
695.000										
690.000										
685.000										
680.000										
675.000										
670.000										
665.000										
660.000										
655.000										
650.000										
645.000										
640.000										
635.000										
630.000										
625.000										
620.000										
615.000										
610.000										
605.000										
600.000										
595.000										
590.000										
585.000										
580.000										
575.000										
570.000										
565.000										
560.000										
555.000										
550.000										
545.000										
540.000										
535.000										
530.000										
525.000										
520.000										
515.000										
510.000										
505.000										
500.000										
495.000										
490.000										
485.000										
480.000										
475.000										
470.000										
465.000										
460.000										
455.000										
450.000										
445.000										
440.000										
435.000										
430.000										
425.000										
420.000										
415.000										
410.000										
405.000										
400.000										
395.000										
390.000										
385.000										
380.000										
375.000										
370.000										
365.000										
360.000										
355.000										
350.000										
345.000										
340.000										
335.000										
330.000										
325.000										
320.000										
315.000										
310.000										
305.000										
300.000										
295.000										
290.000										
285.000										
280.000										
275.000										
270.000										
265.000										
260.000										
255.000										
250.000										
245.000										
240.000										
235.000										
230.000										
225.000										
220.000										
215.000										
210.000										
205.000										
200.000										
195.000										
190.000										
185.000										
180.000										
175.000										
170.000										
165.000										
160.000										
155.000										
150.000										
145.000										
140.000										
135.000										
130.000										



A
D-1
SCALE 1:500

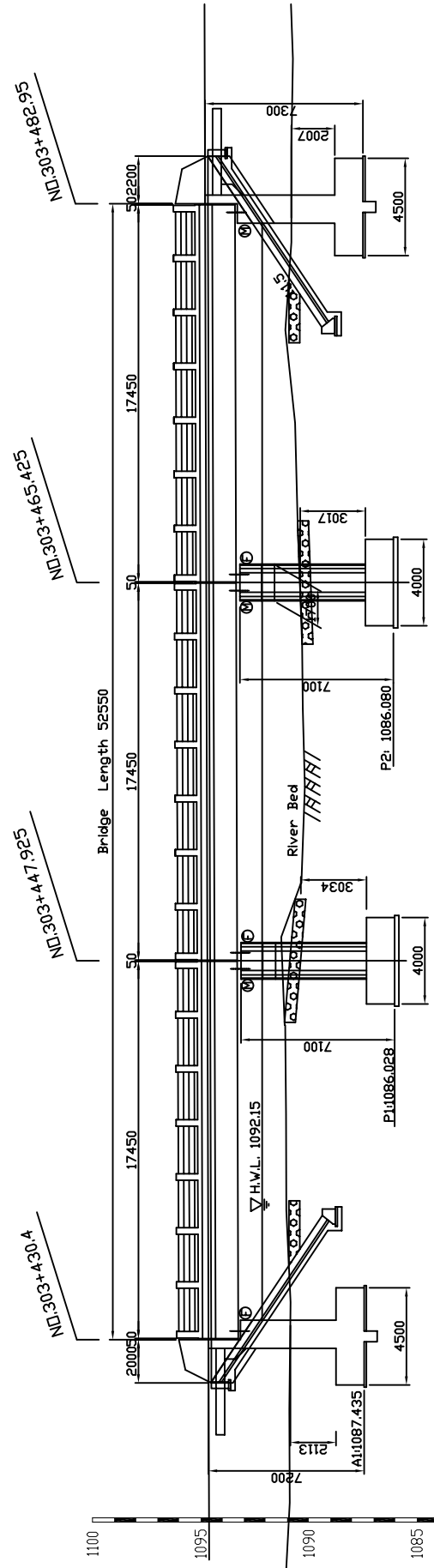


THE BASIC DESIGN STUDY ON CONSTRUCTION OF EASTERN ARTERIAL ROAD IN MONGOLIA	
JAPAN INTERNATIONAL COOPERATION AGENCY (JICA)	DEPARTMENT OF ROADS, MINISTRY OF INFRASTRUCTURE, THE GOVERNMENT OF MONGOLIA
PACIFIC CONSULTANTS INTERNATIONAL JAPAN OVERSEAS CONSULTANTS	Scale
WEST UNDUKHAAAN INTERSECTION DETAIL PLAN, AND TYPICAL SECTIONS (SECTION-6)	AS SHOWN
Drawing title	Sheet No.
	D-1 1/1

図 3-2-3-92 ウンドゥルハーン西交差点 (Section VI)

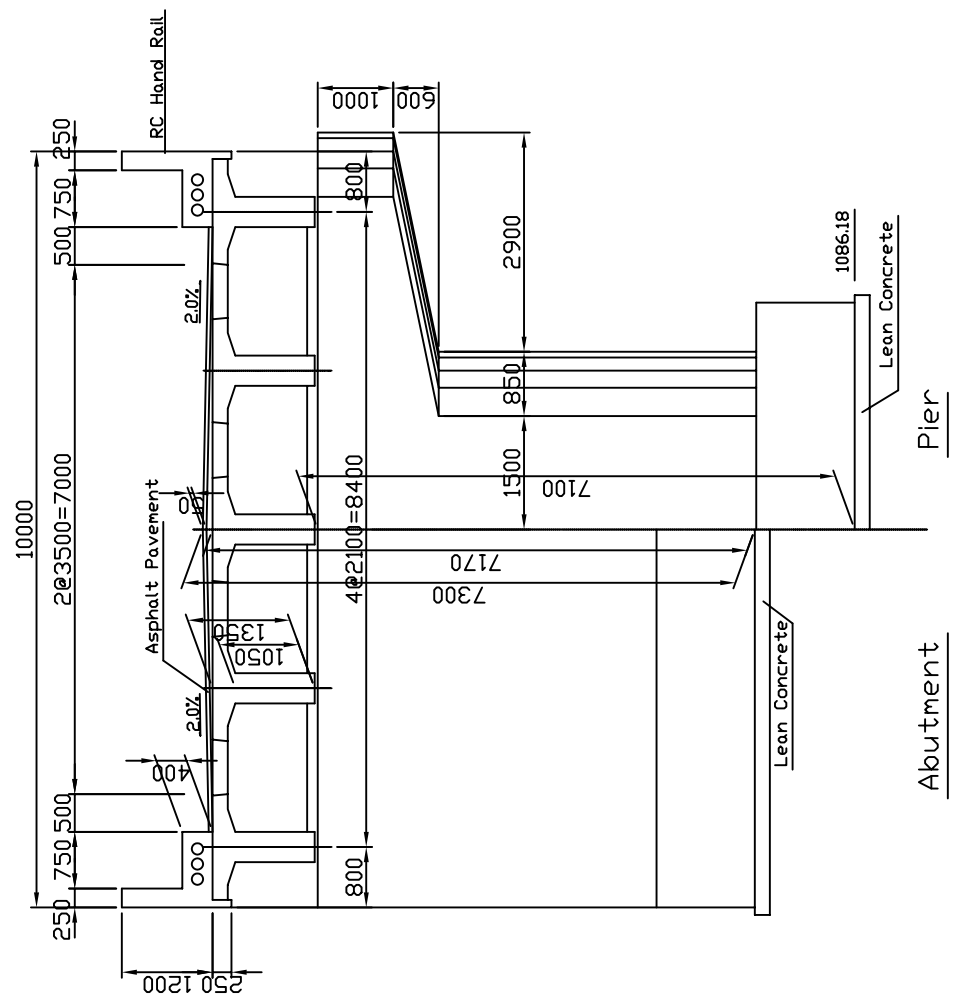
GENERAL VIEW (MURUN BRIDGE)

PROFILE 1:300

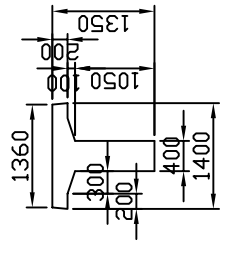


Gradient	Proposed Height	Ground Height	Distance	Station No.	Horizontal Alignment
0.300%	1090.88	1090.93	4.33	303.430	AI:1087.435
	1090.87	1090.87	4.95	303.430	AI:1087.435
	1091.04	1091.04	4.25	303.435	AI:1087.435
	1091.05	1091.05	4.46	303.440	AI:1087.435
	1091.08	1091.08	4.11	303.445	AI:1087.435
	1091.08	1091.08	4.08	303.450	AI:1087.435
	1091.24	1091.24	2.49	303.450	AI:1087.435
	1091.33	1091.33	2.49	303.450	AI:1087.435
	1091.48	1091.48	4.48	303.455	AI:1087.435
	1091.81	1091.81	4.56	303.475	AI:1087.435
	1092.07	1092.07	3.63	303.460	AI:1087.435
	1093.31	1093.31	4.61	303.465	AI:1087.435
	1094.70	1094.70	4.96	303.470	AI:1087.435
	1094.74	1094.74	4.96	303.470	AI:1087.435
	1094.63	1094.63	4.3	303.475	AI:1087.435
	1094.92	1094.92	4.06	303.480	AI:1087.435
	1094.78	1094.78	4.06	303.480	AI:1087.435
	1094.64	1094.64	4.38	303.485	AI:1087.435
	1094.79	1094.79	4.11	303.490	AI:1087.435
	1090.69	1090.69	4.11	303.490	AI:1087.435

SECTION 1:100

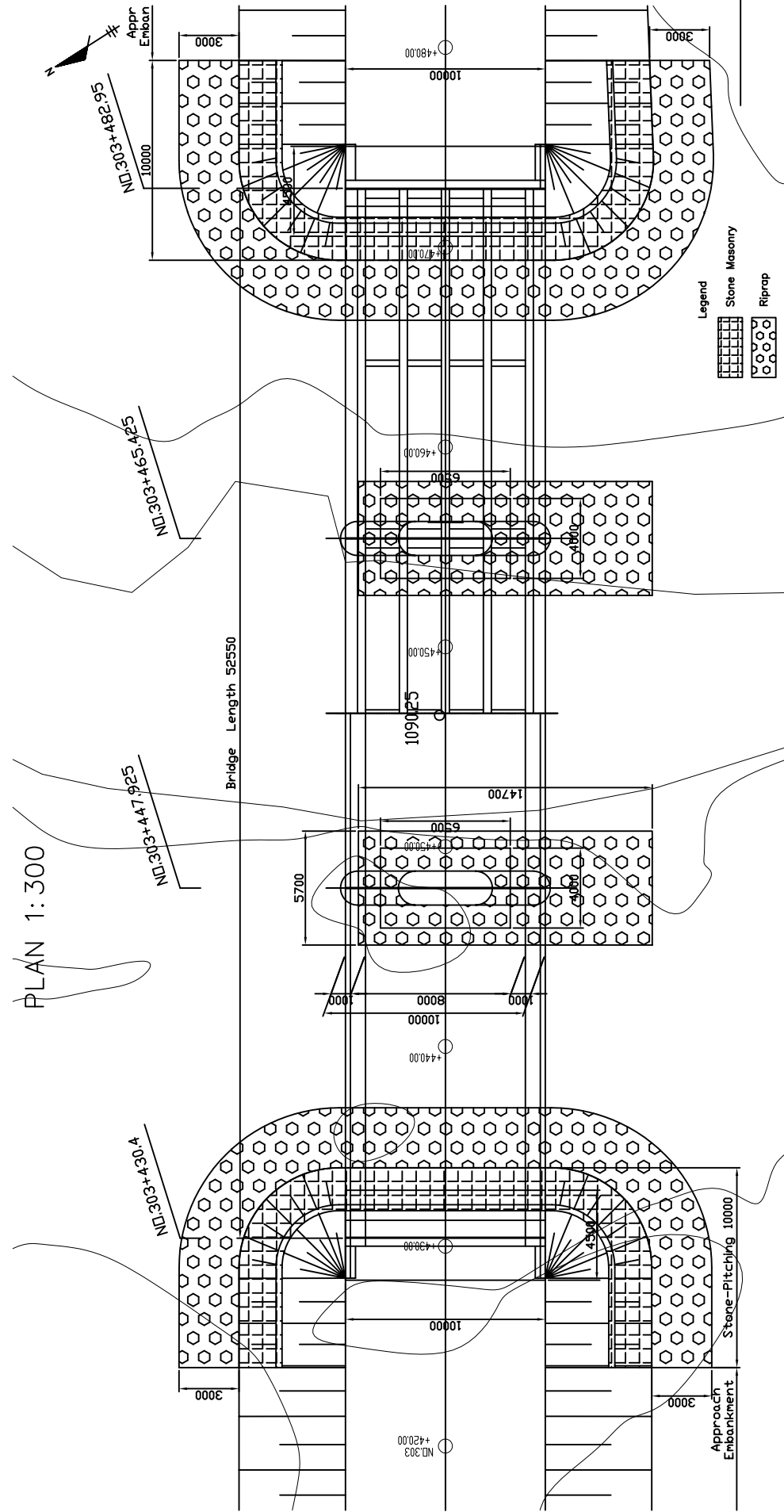


SECTION OF GIRDER
1:100



DESIGN CRITERIA	
Design Speed	V=100km/h
Bridge Length (Span Length)	52.55m (3217.50m)
Total Width	10.00m
Longitudinal Gradient	0.300%
Cross-fall of Carriage way	2.0%
Superstructure Type	RC-T Shape Girder
Substructure Type	Abutment RC Reversed T-Shape Pier
Foundation Type	RC Vial (Counter Beam) Spread (Direct)

MATERIAL STRENGTH		
Category	Material	Specification
Superstructure	Girder	$\sigma_{sk}=24N/mm^2$
	Cross-Beam	$\sigma_{sk}=24N/mm^2$
Bridge Surface	Asphalt Pavement	$\sigma_{sk}=24N/mm^2$
	Levelling Concrete	$\sigma_{sk}=21N/mm^2$
Substructure	Approach Slab	$\sigma_{sk}=21N/mm^2$
	Lean Concrete	$\sigma_{sk}=18N/mm^2$
	Reinforcing Bar	SD295($\sigma_{p}>295N/mm^2$)



PLAN 1:300

THE BASIC DESIGN STUDY ON CONSTRUCTION OF EASTERN ARTERIAL ROAD IN MONGOLIA

JAPAN INTERNATIONAL COOPERATION AGENCY (JICA)

DEPARTMENT OF ROADS,
MINISTRY OF INFRASTRUCTURE,
THE GOVERNMENT OF MONGOLIA

PACIFIC CONSULTANTS INTERNATIONAL
JAPAN OVERSEAS CONSULTANTS

Drawing title
GENERAL VIEW
(MURUN BRIDGE)
(SECTION-6)

Scale
AS SHOWN

Sheet No.
E-1
115

CENTER LINE

図 3-2-3-93 ムルン橋一般図

CONSTRUCTION PLAN (1/3) OF MURUN BRIDGE

PLAN 1:500

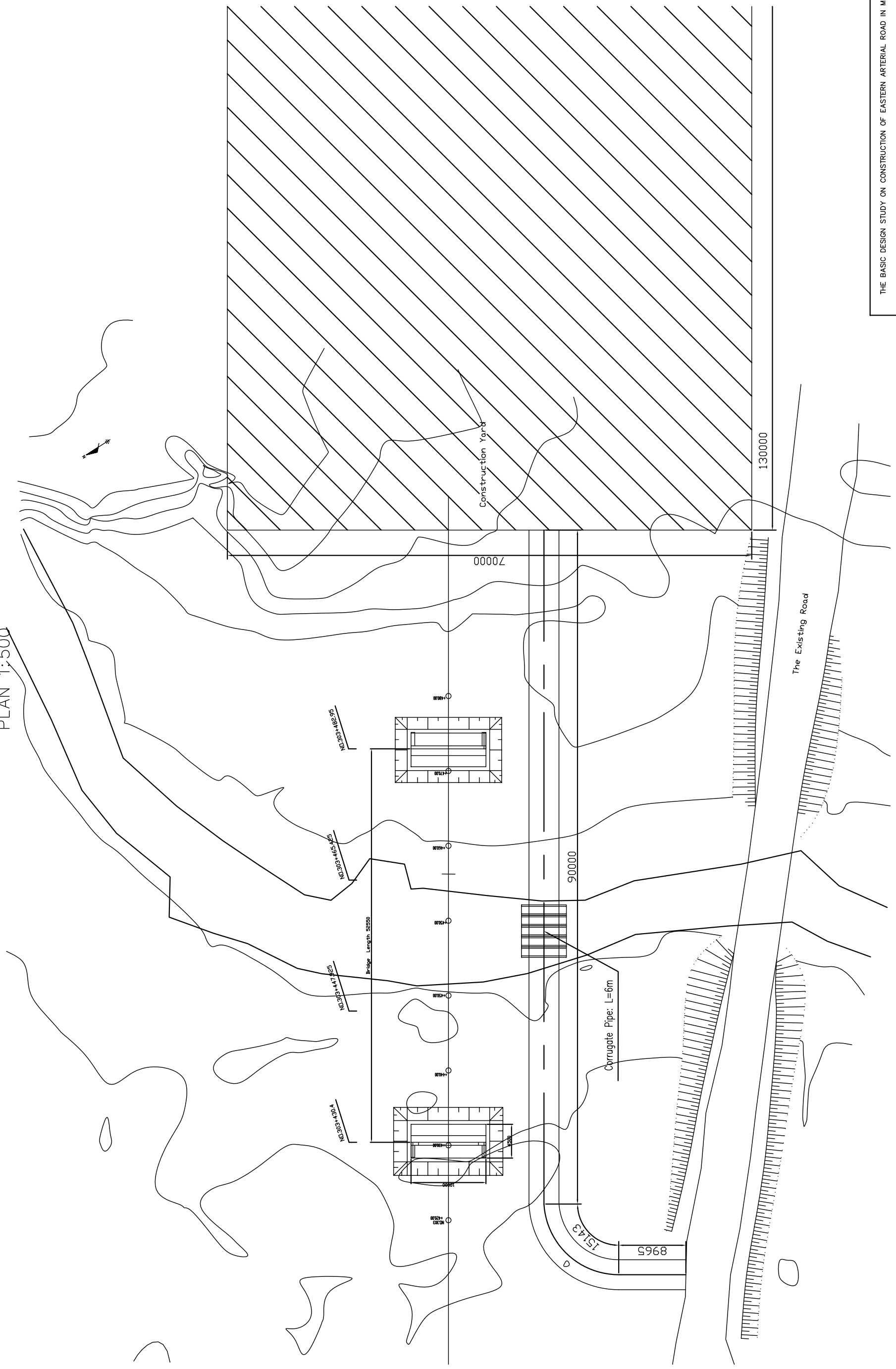


図 3-2-3-95 ムルン橋施工計画(1)

CONSTRUCTION PLAN (2/3) OF MURUN BRIDGE

PLAN 1:500

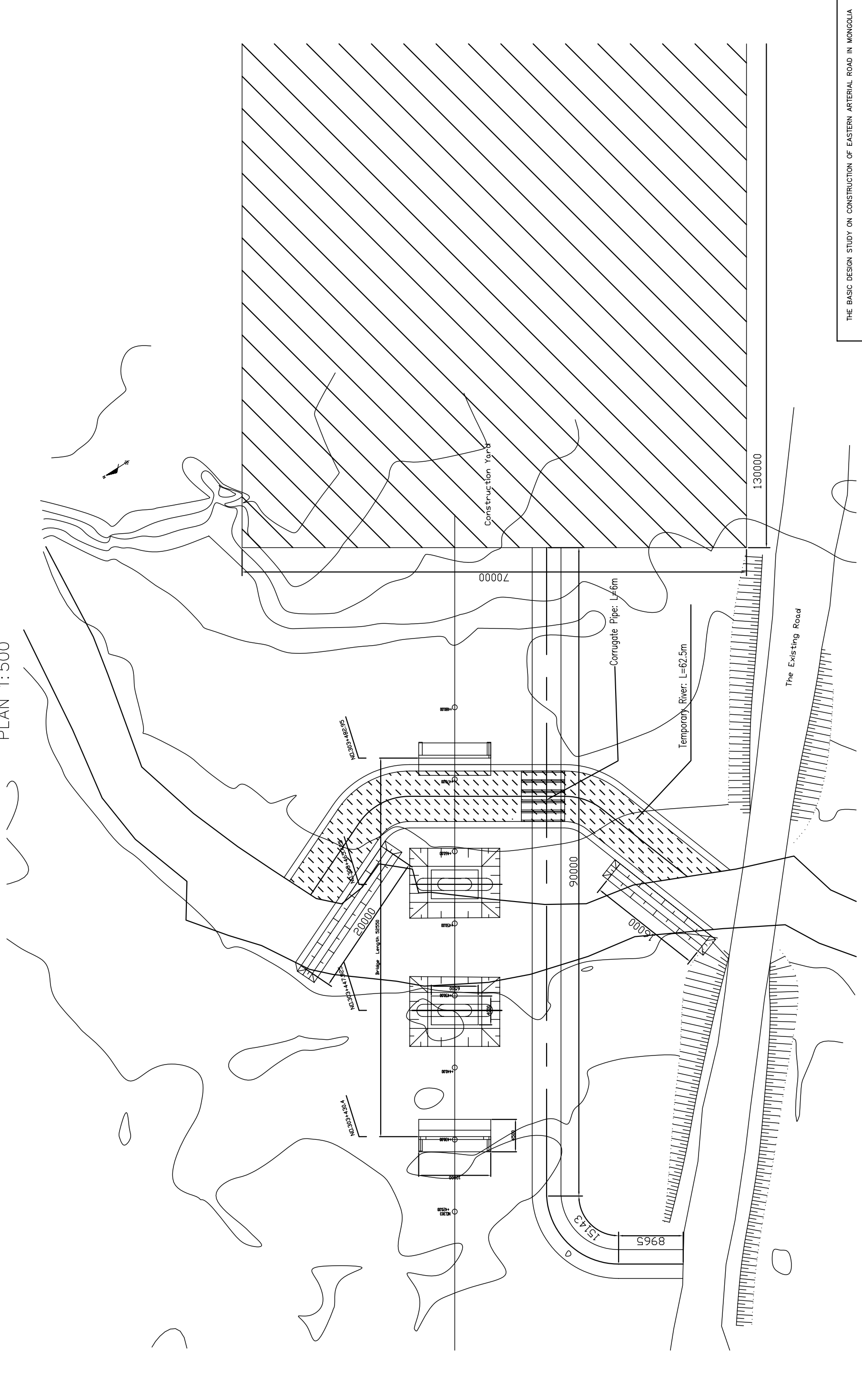


図 3-2-3-96 ムルン橋施工計画(2)

CONSTRUCTION PLAN (3/3) OF MURUN BRIDGE

PLAN 1:500

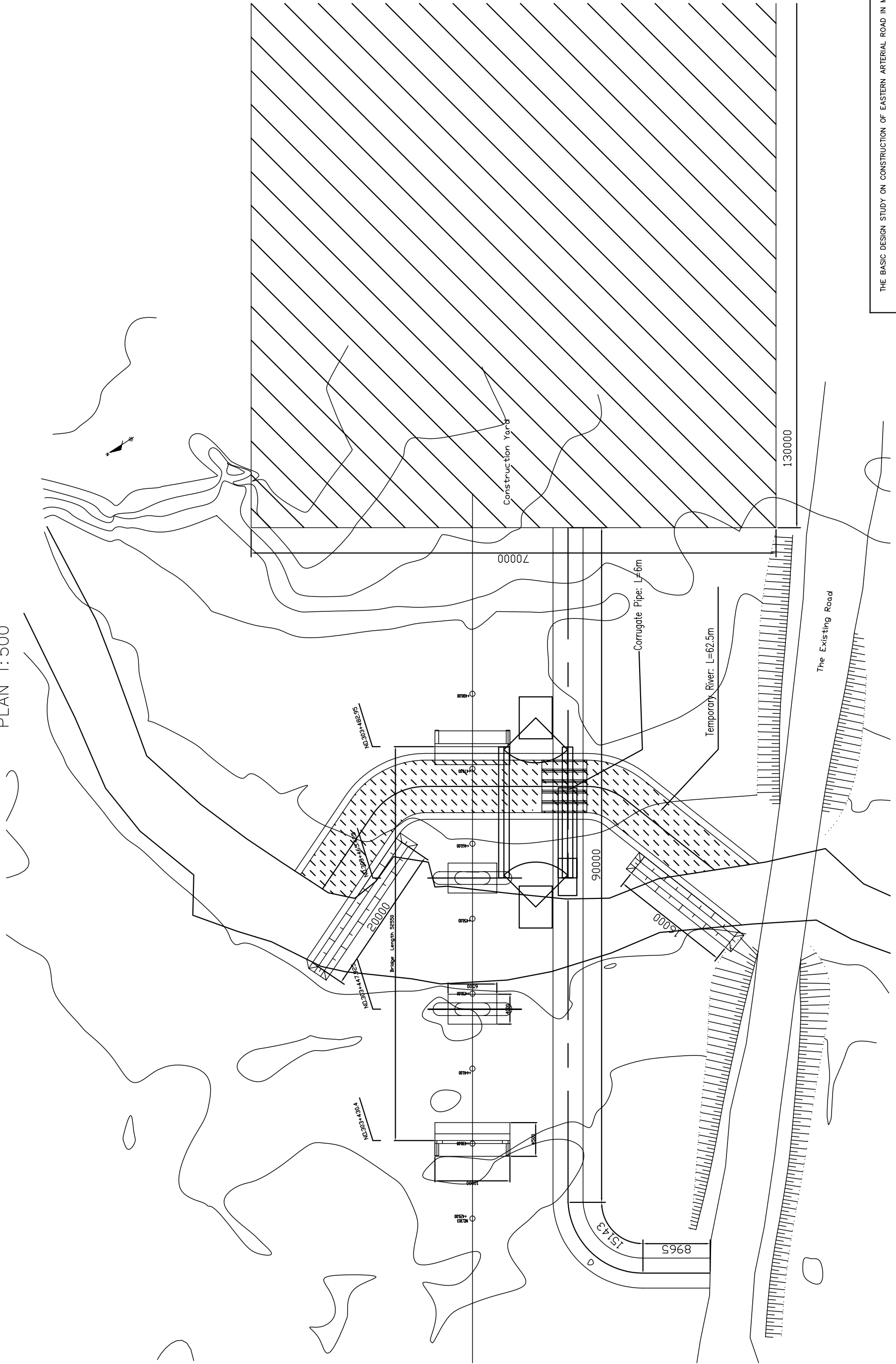


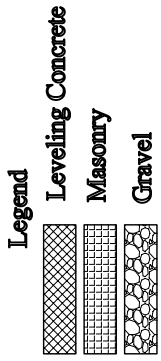
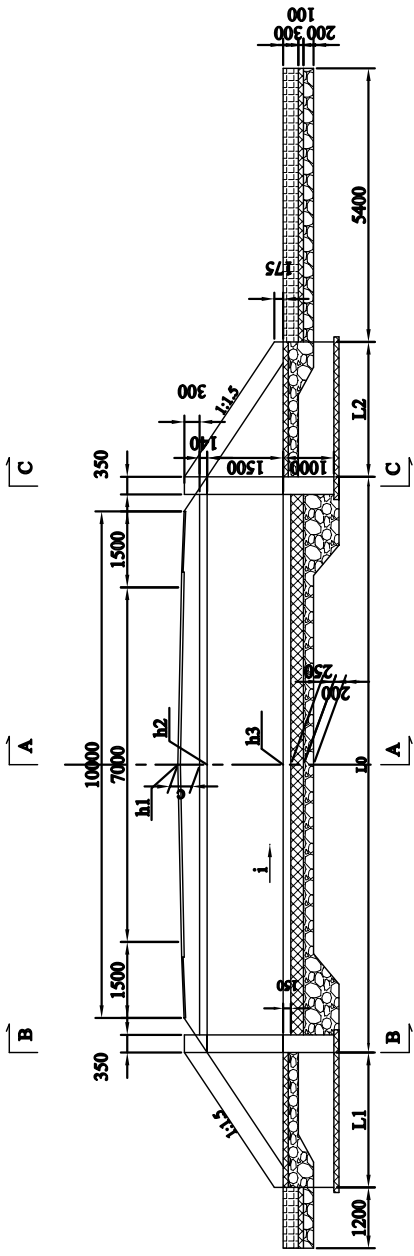
図 3-2-3-97 ムルン橋施工計画(3)

GENERAL VIEW OF PIPE CULVERT
TypeB $\phi=1500$

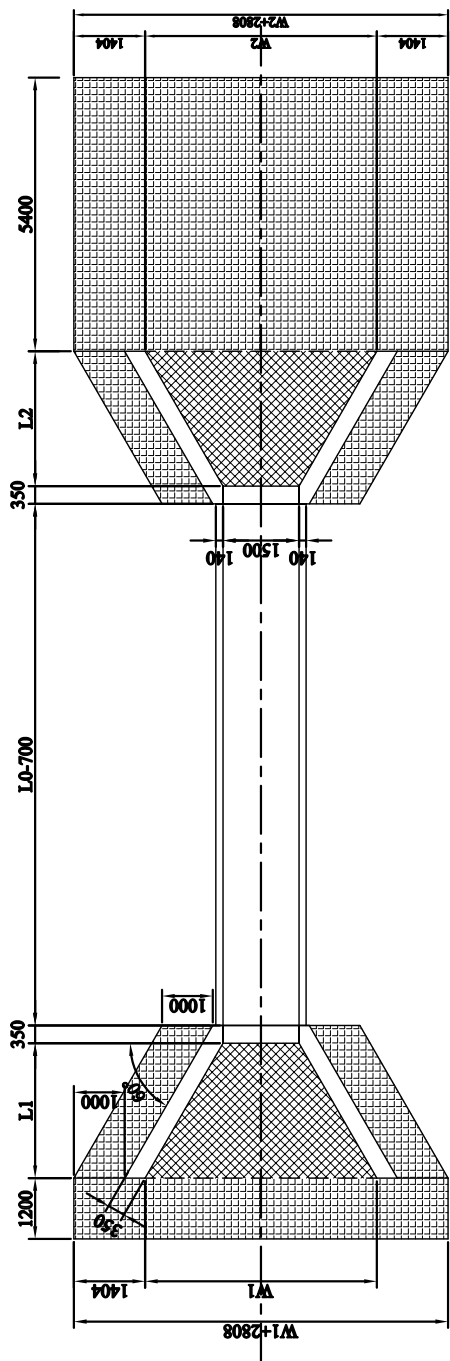
4 DESIGN CRITERIA
F-2

STRUCTURE TYPE	RC PRECAST PIPE CULVERT
LIVE LOAD	AAASHTO HS20-44 W=18.1t
SNOW LOAD	NULL
IMPACT COEFFICIENT	0.5
ROAD WIDTH	TOTAL 10.0m
	EFFECTIVE 9.0m
	CARRIAGEWAY 2@3.5m
ANGLE OF SKEW	90°
FOUNDATION TYPE	SPREAD
CONCRETE	PRECAST PIPE cast = 21.0N/mm ²
REINFORCEMENT BAR	FOUNDATION cast = 18.0N/mm ²
BEARING CAPACITY OF GROUND	SD295
	q = 200kN/m ²

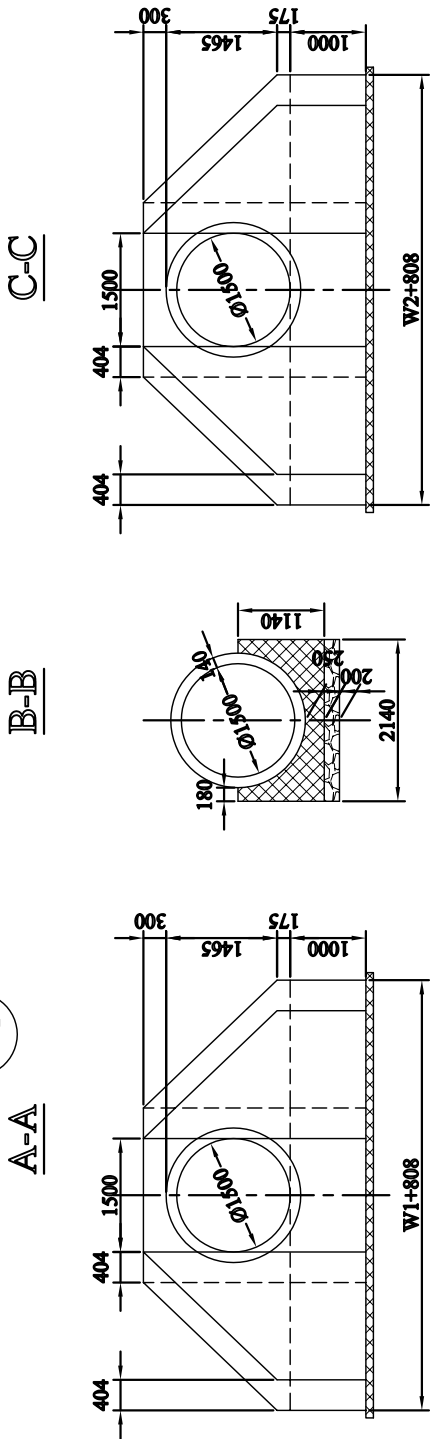
1 PROFILE OF PIPE CULVERTS
SCALE 1:150
F-2



2 PLAN OF PIPE CULVERTS
SCALE 1:150
F-2



3 CROSS SECTION OF PIPE CULVERT
SCALE 1:100
F-2



5 LIST OF LENGTH
F-2

Section II

Point	Type	i	b1	b2	b3	c	L0	L1	L2	W1	W2
304 + 206	A	1.0	1102.6300	1101.7983	1100.7983	732	12108	1810	1865	3090	3154
304 + 600	B	1.0	1102.3840	1101.5000	1100.0000	744	12265	2608	2688	4511	4604
306 + 509	B	1.0	1117.8150	1116.9286	1115.4286	746	12272	2608	2688	4511	4604
307 + 23	C	1.0	1118.1810	1117.2922	1115.7922	749	12279	2608	2688	4511	4604
308 + 335	C	1.0	1127.0115	1126.0993	1124.5993	772	12349	2608	2688	4511	4604
310 + 318	B	1.0	1129.8730	1128.6984	1127.1984	1035	13137	2608	2688	4511	4604
311 + 200	C	2.0	1127.8730	1126.9850	1125.4850	748	12285	2570	2729	4668	4851
311 + 422	C	2.5	1126.5890	1125.6861	1124.1861	763	12336	2552	2751	4647	4877
314 + 0	B	1.0	1155.0530	1154.0970	1152.5970	816	12481	2608	2688	4511	4604
315 + 181	B	2.0	1141.1575	1140.2690	1138.7690	749	12287	2570	2729	4668	4851
315 + 700	C	1.0	1136.9033	1135.6690	1134.1690	1094	13316	2608	2688	4511	4604
316 + 857	B	1.5	1124.2030	1123.2974	1121.7974	766	12333	2589	2708	4490	4627
317 + 763	A	1.0	1116.4571	1115.5866	1114.5866	770	12224	1810	1865	3090	3154
318 + 458	B	1.0	1108.1038	1106.5246	1105.0246	1439	14351	2608	2688	4511	4604
319 + 529	B	1.0	1095.8010	1094.8992	1093.3992	762	12318	2608	2688	4511	4604
320 + 600	C	1.0	1087.8840	1086.6980	1085.1980	1046	13171	2608	2688	4511	4604
321 + 300	B	1.0	1086.3718	1085.4620	1083.9620	770	12342	2608	2688	4511	4604
322 + 0	C	2.5	1079.5919	1078.5820	1077.0820	870	12657	2552	2751	4647	4877
322 + 700	B	1.0	1083.9900	1083.0940	1081.5940	756	12301	2608	2688	4511	4604
323 + 552	A	1.0	1081.8445	1080.7188	1079.7188	1026	12990	1810	1865	3090	3154
324 + 68	A	1.0	1075.5474	1073.5021	1072.5021	1945	15749	1810	1865	3090	3154
326 + 0	B	1.0	1045.9650	1045.0260	1043.5260	799	12430	2608	2688	4511	4604

6 PIPE JOINT DETAIL
SCALE 1:75
F-2

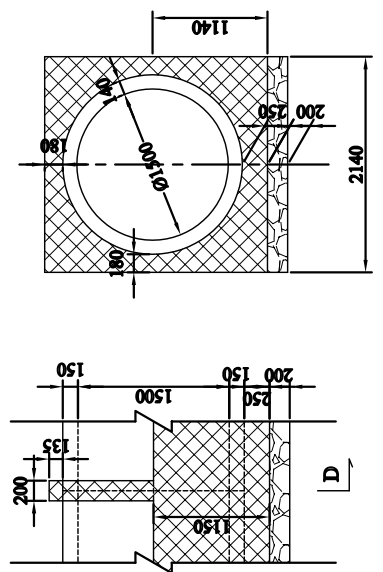


図 3-2-3-99 パイプカルバート一般図(タイプB) =1500

THE BASIC DESIGN STUDY ON CONSTRUCTION OF EASTERN ARTERIAL ROAD IN MONGOLIA

JAPAN INTERNATIONAL COOPERATION AGENCY (JICA)

DEPARTMENT OF ROADS,
MINISTRY OF INFRASTRUCTURE,
THE GOVERNMENT OF MONGOLIA

PACIFIC CONSULTANTS INTERNATIONAL
JAPAN OVERSEAS CONSULTANTS

Drawing title
GENERAL VIEW OF PIPE CULVERT
TYPE B ($\phi=1500$)
(SECTION-6)

Scale
AS SHOWN

Sheet No.
F-2
2/5

4 DESIGN CRITERIA

STRUCTURE TYPE	RC PRECAST PIPE CULVERT
LIVE LOAD	AASHTO HS20-44 W-18.11
SNOW LOAD	NULL
IMPACT COEFFICIENT	0.5
ROAD WIDTH	TOTAL 10.0m
ANGLE OF SKEW	EFFECTIVE 0.0m
FOUNDATION TYPE	CARRIAGEWAY 2@3.5m
CONCRETE	SPREAD
REINFORCEMENT BAR	PRECAST PIPE cast in place FOUNDATION
BEARING CAPACITY OF GROUND	SD295 B = 200kN/m ²

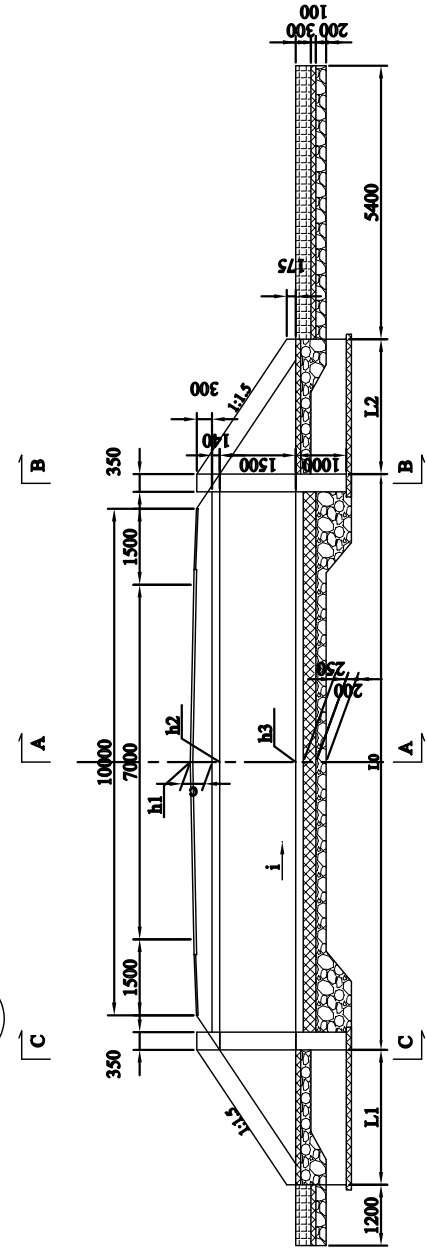
5 LIST OF LENGTH

Section II

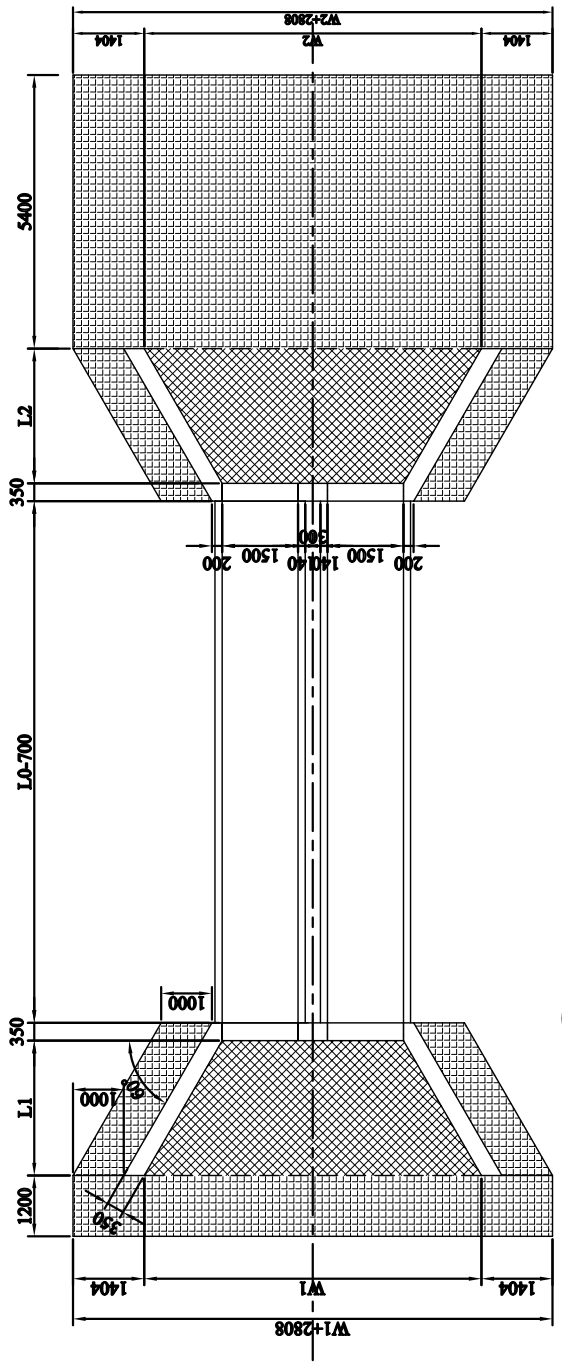
Point	Type	l1	l2	l3	c	L0	L1	L2	W1	W2		
304 +	206	A	1.0	1102.6300	1101.7983	1100.7983	732	12108	1810	1865	3090	3154
304 +	600	B	1.0	1102.3840	1101.5000	1100.0000	744	12265	2608	2688	4511	4604
306 +	509	B	1.0	1117.8150	1116.9286	1115.4286	746	12272	2608	2688	4511	4604
307 +	23	C	1.0	1118.1810	1117.2922	1115.7922	749	12279	2608	2688	4511	4604
308 +	335	C	1.0	1127.0115	1126.0993	1124.5993	772	12349	2608	2688	4511	4604
310 +	318	B	1.0	1129.8730	1128.6984	1127.1984	1035	13137	2608	2688	4511	4604
311 +	200	C	2.0	1127.8730	1126.9850	1125.4850	748	12285	2570	2729	6668	6851
311 +	422	C	2.5	1126.5890	1125.6861	1124.1861	763	12336	2552	2751	6647	6877
314 +	0	B	1.0	1155.0530	1154.0970	1152.5970	816	12481	2608	2688	4511	4604
315 +	181	B	2.0	1141.1575	1140.2690	1138.7690	749	12287	2570	2729	4468	4651
315 +	700	C	1.0	1136.9033	1135.6690	1134.1690	1094	13316	2608	2688	4511	4604
316 +	857	B	1.5	1124.2030	1123.2974	1121.7974	766	12333	2589	2708	4490	4627
317 +	763	A	1.0	1116.4571	1115.5866	1114.5866	770	12224	1810	1865	3090	3154
318 +	458	B	1.0	1108.1038	1106.5246	1105.0246	1439	14351	2608	2688	4511	4604
319 +	529	B	1.0	1095.8010	1094.8992	1093.3992	762	12318	2608	2688	4511	4604
320 +	600	C	1.0	1087.8840	1086.6980	1085.1980	1046	13171	2608	2688	4511	4604
321 +	300	B	1.0	1086.3718	1085.4620	1083.9620	770	12342	2608	2688	4511	4604
322 +	0	C	2.5	1079.5919	1078.5820	1077.0820	870	12657	2552	2751	6647	6877
322 +	700	B	1.0	1083.9900	1083.0940	1081.5940	756	12301	2608	2688	4511	4604
323 +	552	A	1.0	1081.8445	1080.7188	1079.7188	1026	12990	1810	1865	3090	3154
324 +	68	A	1.0	1075.5474	1073.5021	1072.5021	1945	15749	1810	1865	3090	3154
326 +	0	B	1.0	1045.9650	1045.0260	1043.5260	799	12430	2608	2688	4511	4604

GENERAL VIEW OF PIPE CULVERT
TypeC 2@φ=1500

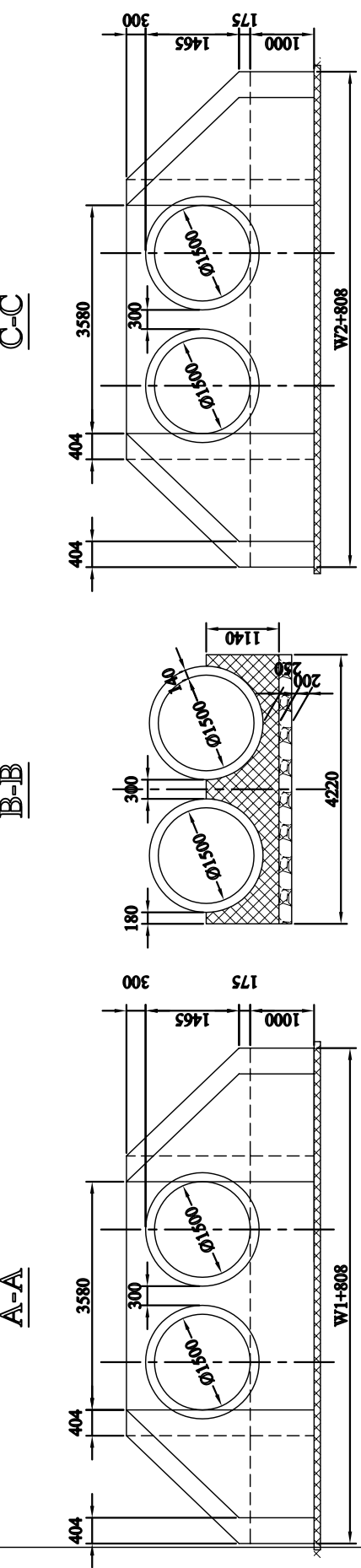
1 PROFILE OF PIPE CULVERT
SCALE 1:150



2 PLAN OF PIPE CULVERT
SCALE 1:150

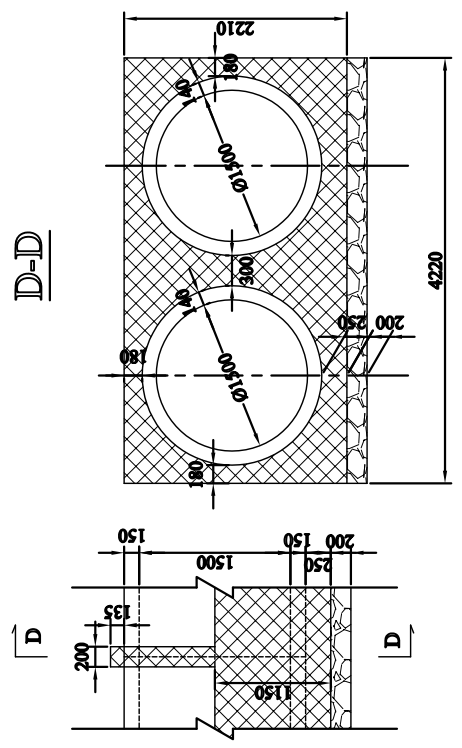


3 CROSS SECTION OF PIPE CULVERT
SCALE 1:20



3-2-3-100 パイプカルバート一般図(タイプC 2@φ=1500)

6 PIPE JOINT DETAIL
SCALE 1:75



THE BASIC DESIGN STUDY ON CONSTRUCTION OF EASTERN ARTERIAL ROAD IN MONGOLIA

JAPAN INTERNATIONAL COOPERATION AGENCY (JICA)

DEPARTMENT OF ROADS,
MINISTRY OF INFRASTRUCTURE,
THE GOVERNMENT OF MONGOLIA

PACIFIC CONSULTANTS INTERNATIONAL
JAPAN OVERSEAS CONSULTANTS

Drawing title
GENERAL VIEW OF PIPE CULVERT
TYPE C (2@1500)
(SECTION-6)

Scale
AS SHOWN

Sheet No.
F-3
3/5

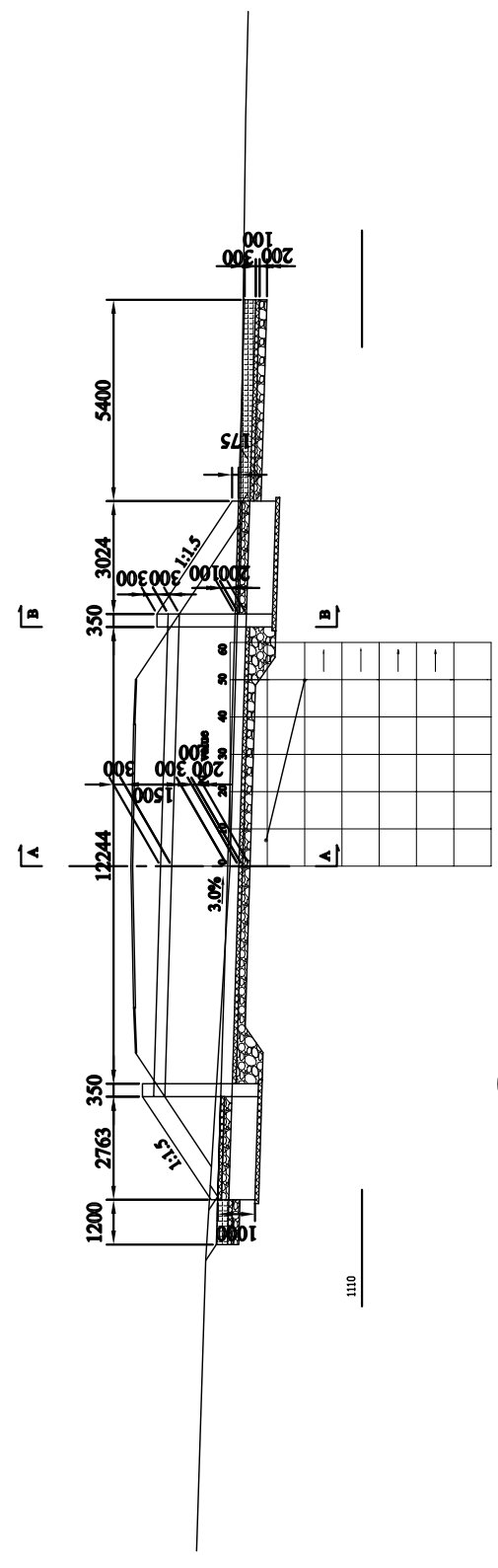
4 DESIGN CRITERIA

STRUCTURE TYPE	RC BOX CULVERT
LIVE LOAD	AASHTO HS-20-44 W-18.1h
SNOW LOAD	NULL
IMPACT COEFFICIENT	0.3
ROAD WIDTH	TOTAL 10.5m
	EFFECTIVE 9.0m
	CARRIAGEWAY 2x3.5m
	SHOULDER 1.0m
ANGLE OF SKEW	90°
FOUNDATION TYPE	SPREAD
CONCRETE	STRUCTURE cok = 21.6N/mm ²
FOUNDATION	FOUNDAION cok = 18.0N/mm ²
REINFORCEMENT BAR	SD295
BEARING CAPACITY OF GROUND	q = 200kN/m ²

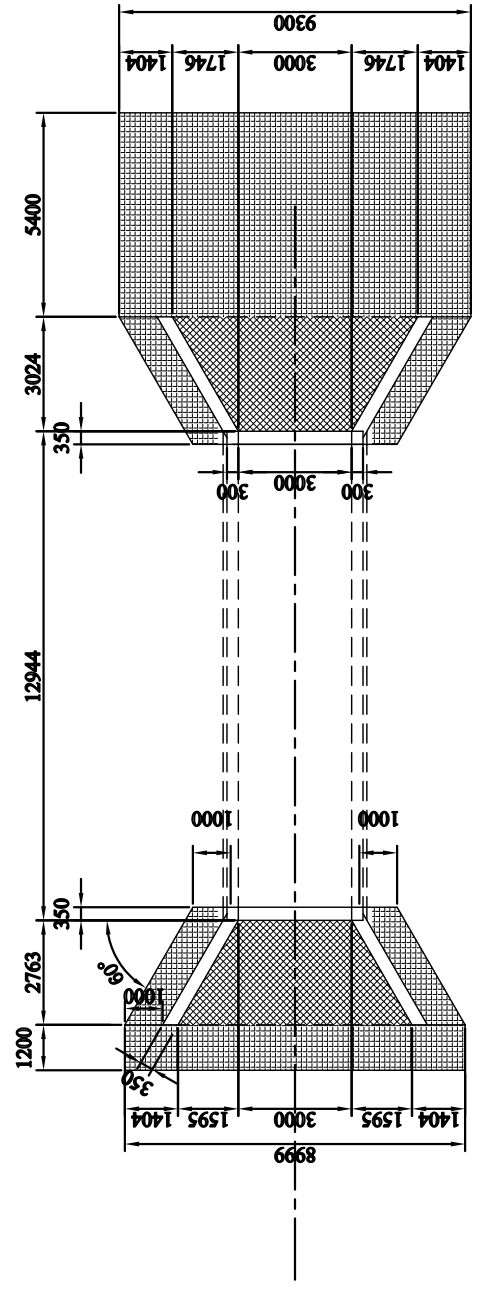
GENERAL VIEW OF BOX CULVERT
BC 1 (305 +530)

1 PROFILE OF BOX CULVERT
SCALE 1:200

BC1 305 +530
GH= 1113.54
PH= 1116.20



2 PLAN OF BOX CULVERT
SCALE 1:200



Legend
 Leveling Concrete
 Masonry
 Gravel

3 CROSS SECTION OF BOX CULVERT
SCALE 1:20

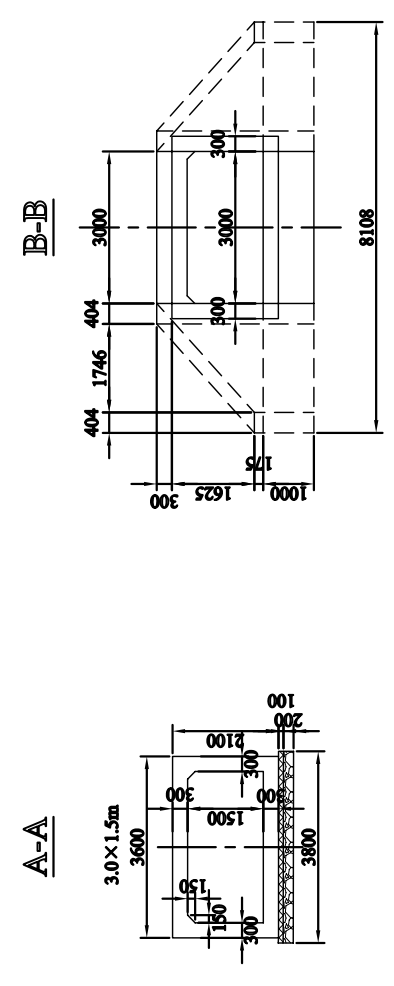


図 3-2-3-101 ボックスカルバート一般図(BC1 Sta. 305+530)

THE BASIC DESIGN STUDY ON CONSTRUCTION OF EASTERN ARTERIAL ROAD IN MONGOLIA	
JAPAN INTERNATIONAL COOPERATION AGENCY (JICA)	DEPARTMENT OF ROADS,
PACIFIC CONSULTANTS INTERNATIONAL JAPAN OVERSEAS CONSULTANTS	MINISTRY OF INFRASTRUCTURE, THE GOVERNMENT OF MONGOLIA
Drawing title GENERAL VIEW OF BOX CULVERT BC1 (305 +530) (SECTION-6)	Scale AS SHOWN
Sheet No. F-4 4/5	

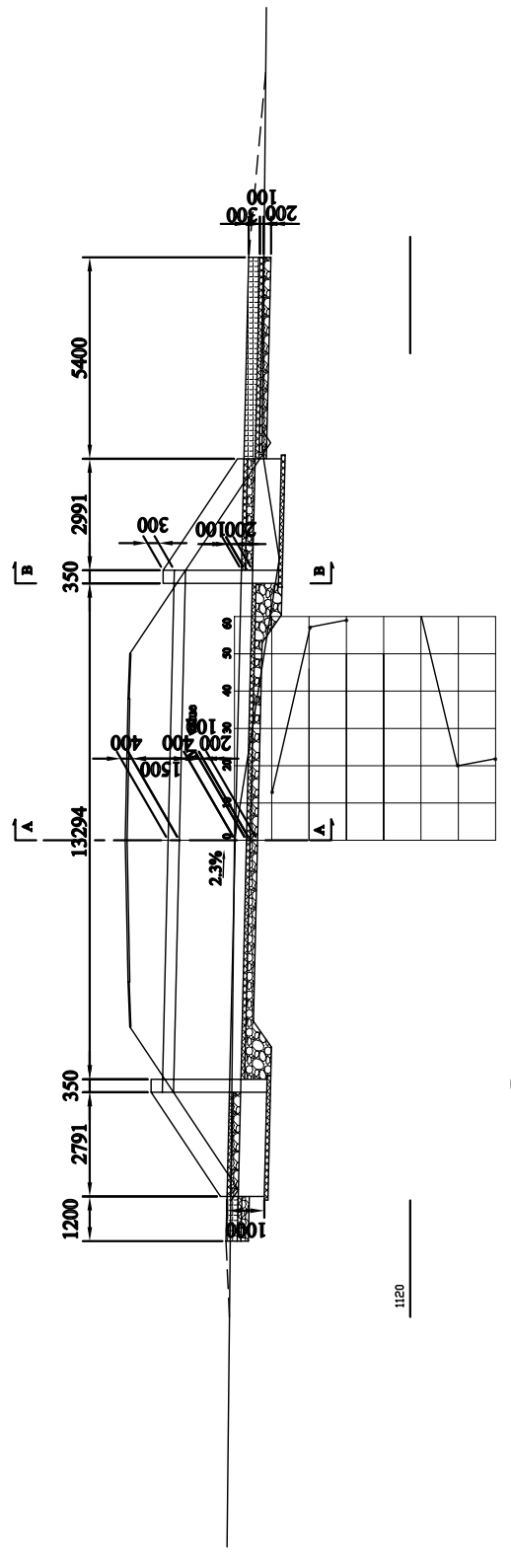
4 DESIGN CRITERIA

STRUCTURE TYPE	RC BOX CULVERT
LIVE LOAD	AASHTO HS-20-44 W-18.1h
SNOW LOAD	NULL
IMPACT COEFFICIENT	0.3
ROAD WIDTH	TOTAL 10.5m
	CARRIAGEWAY 2x3.5m
	EFFECTIVE 9.0m
	SHOULDER 1.0m
ANGLE OF SKEW	90°
FOUNDATION TYPE	SPREAD
CONCRETE	STRUCTURE c _{sk} = 21.6N/mm ²
	FOUNDATION c _{sk} = 18.0N/mm ²
REINFORCEMENT BAR	SD295
BEARING CAPACITY OF GROUND	q = 200kN/m ²

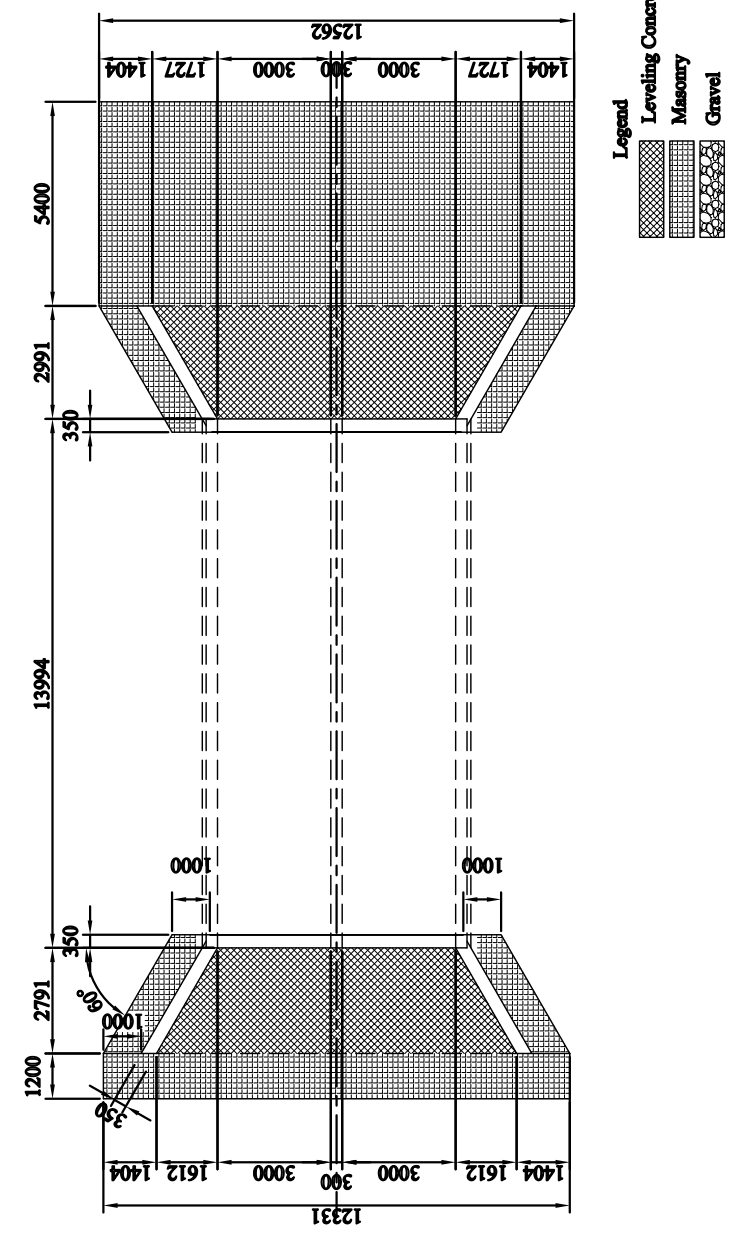
GENERAL VIEW OF BOX CULVERT
BC 2 (309 +058)

1 PROFILE OF BOX CULVERT
SCALE 1:200

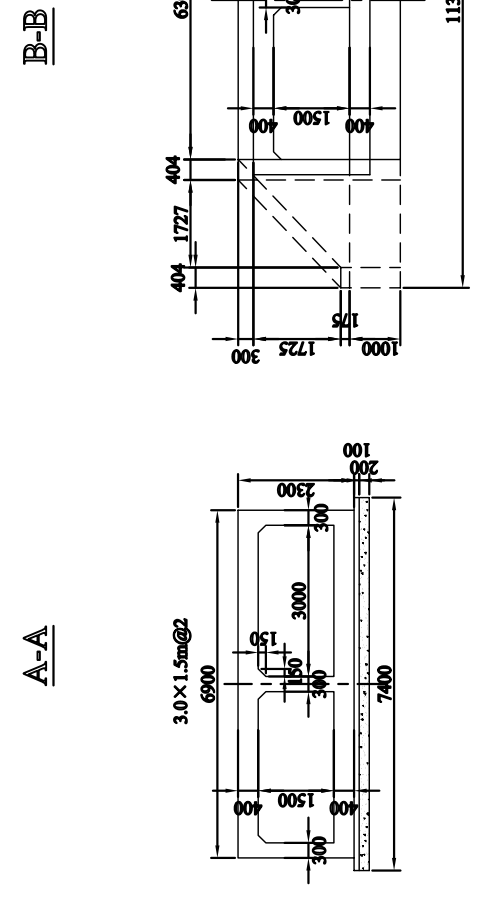
CHAINAGE 309_058
GH= 1124.71
PH= 1127.64



2 PLAN OF BOX CULVERT
SCALE 1:200



3 CROSS SECTION OF BOX CULVERT
SCALE 1:20



THE BASIC DESIGN STUDY ON CONSTRUCTION OF EASTERN ARTERIAL ROAD IN MONGOLIA

JAPAN INTERNATIONAL COOPERATION AGENCY (JICA)	DEPARTMENT OF ROADS,
PACIFIC CONSULTANTS INTERNATIONAL JAPAN OVERSEAS CONSULTANTS	MINISTRY OF INFRASTRUCTURE, THE GOVERNMENT OF MONGOLIA
Drawing title	
GENERAL VIEW OF BOX CULVERT BC2 (309 +058) (SECTION-6)	
Scale	
AS SHOWN	
Sheet No.	
F-5 5/5	

図 3-2-3-102 ボックスカルバート一般図(BC2 Sta.309+058)