

THE BASIC DESIGN STUDY ON CONSTRUCTION OF EASTERN ARTERIAL ROAD IN MONGOLIA

JAPAN INTERNATIONAL COOPERATION AGENCY (JICA)
 DEPARTMENT OF ROADS,
 MINISTRY OF INFRASTRUCTURE,
 THE GOVERNMENT OF MONGOLIA

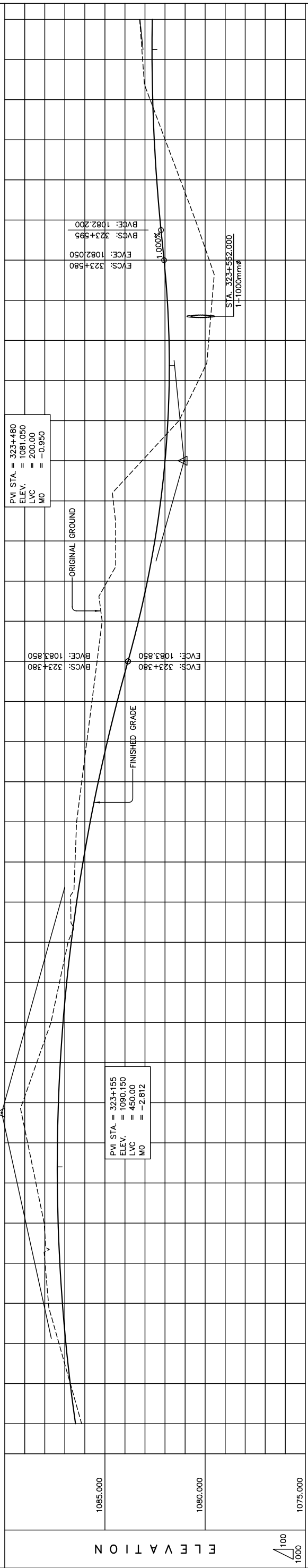
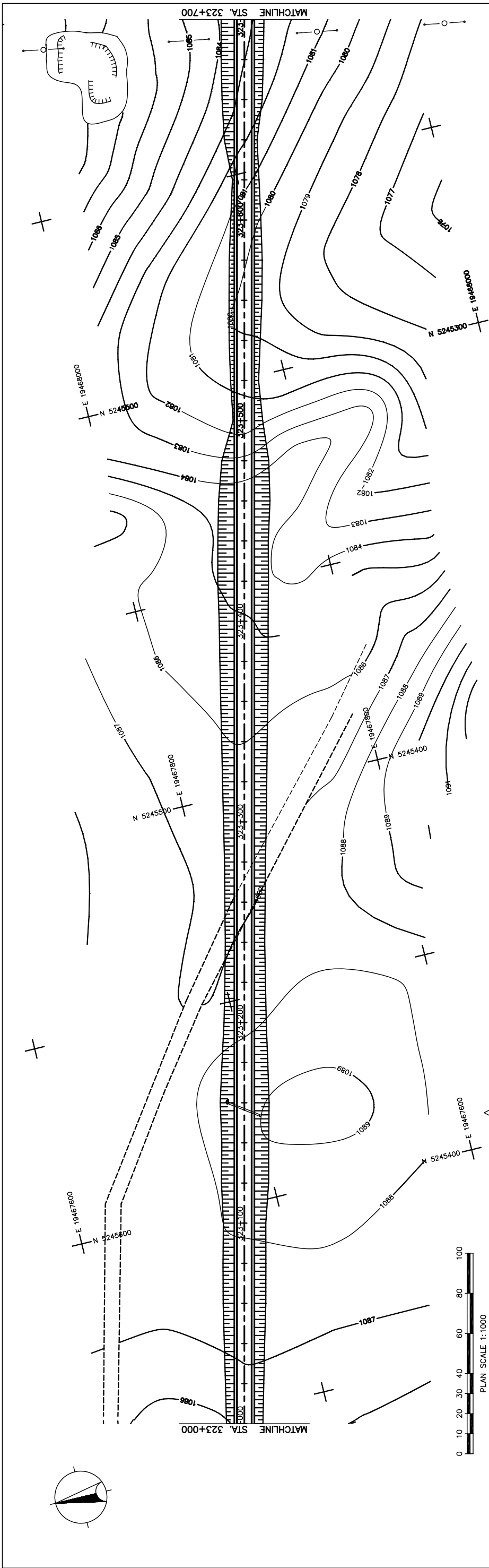
PACIFIC CONSULTANTS INTERNATIONAL
 JAPAN OVERSEAS CONSULTANTS

Scale AS SHOWN

Drawing title
 PLAN AND PROFILE
 STA. 322+300 - STA. 323+000
 (SECTION-6)

Sheet No. C-31
 31/41

図 3-2-3-81 全体平面・縦断面 (Section VI Sta.322+300-Sta.323+000)



STATION	FINISHED GRADE	ORIGINAL GROUND	HORIZONTAL CURVATURE	VERTICAL CURVATURE	SUPERELEVATION
323+000	1086.161	1086.467			
	1086.727	1086.729			
	1087.293	1086.947			
	1087.816	1087.121			
	1087.987	1087.249			
	1088.030	1087.334			
	1088.443	1087.374			
	1088.856	1087.370			
	1089.109	1087.321			
	1088.401	1087.227			
	1087.692	1087.090			
	1087.266	1086.907			
	1086.840	1086.681			
	1086.705	1086.410			
	1086.490	1086.094			
	1086.412	1085.734			
	1086.157	1085.330			
	1085.902	1084.881			
	1085.647	1084.387			
	1085.392	1083.850			
	1085.137	1083.328			
	1084.871	1082.882			
	1084.664	1082.512			
	1084.583	1082.218			
	1083.147	1082.000			
	1081.301	1081.858			
	1080.334	1081.792			
	1079.819	1081.802			
	1079.652	1081.887			
	1079.793	1082.049			
	1080.485	1082.248			
	1081.238	1082.415			
	1081.992	1082.537			
	1082.745	1082.615			
	1083.119	1082.648			
	1083.266	1082.637			

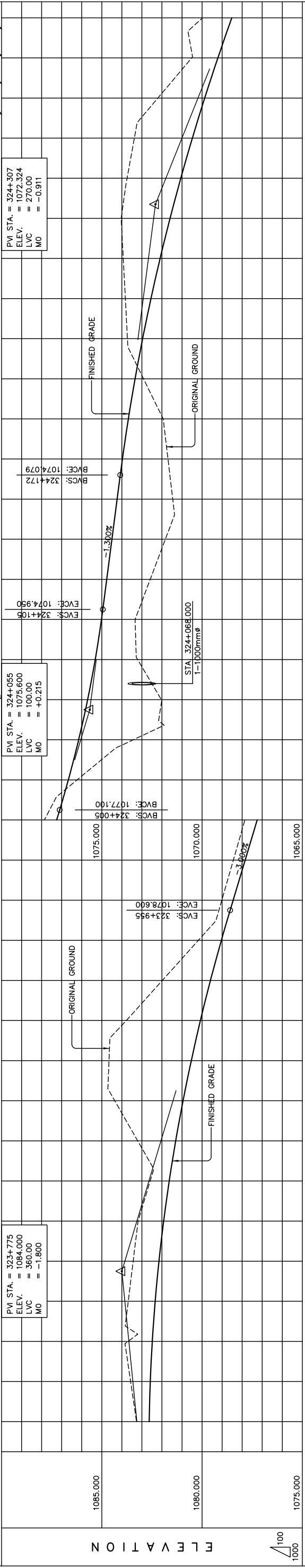
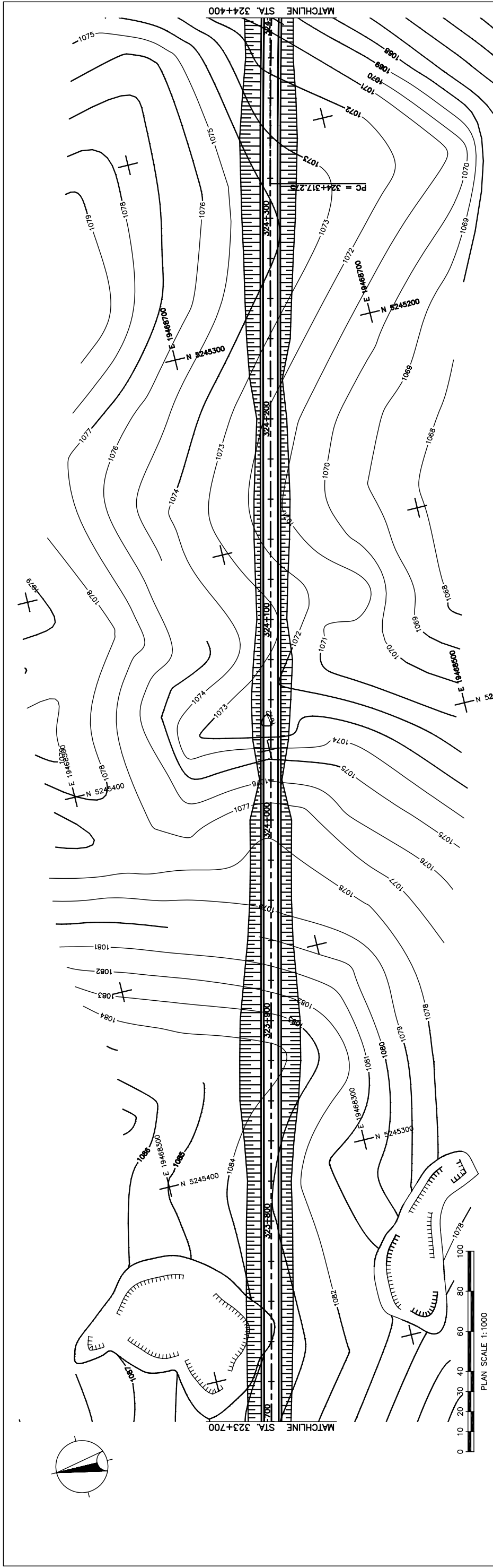
STRAIGHT
LVC = 200.00 m
9 = 1.000%

LVC = 450.00 m

N.C.

THE BASIC DESIGN STUDY ON CONSTRUCTION OF EASTERN ARTERIAL ROAD IN MONGOLIA	
JAPAN INTERNATIONAL COOPERATION AGENCY (JICA)	DEPARTMENT OF ROADS, MINISTRY OF INFRASTRUCTURE, THE GOVERNMENT OF MONGOLIA
PACIFIC CONSULTANTS INTERNATIONAL JAPAN OVERSEAS CONSULTANTS	
Drawing title	Sheet No.
PLAN AND PROFILE STA. 323+000 - STA. 323+700 (SECTION-6)	AS SHOWN C-32 32/41

図 3-2-3-82 全体平面・縦断面 (Section VI Sta.323+000-Sta.323+700)



STATION	323+700	+800	+900	+1000	+200	+300	+400
FINISHED GRADE	1083.266	1082.637	1083.562	1082.581	1083.690	1082.481	1083.681
ORIGINAL GROUND	1083.435	1082.148	1083.681	1082.337	1084.354	1080.948	1084.641
HORIZONTAL CURVATURE	1081.980	1079.581	1080.184	1079.037	1079.014	1078.450	1078.439
VERTICAL CURVATURE	1077.864	1077.250	1077.850	1078.439	1077.850	1077.250	1077.864
SUPERELEVATION	1076.233	1076.669	1076.154	1073.428	1073.027	1075.207	1073.214
	1073.339	1075.017	1075.328	1073.214	1073.339	1075.017	1073.339
	1072.584	1074.755	1074.495	1071.829	1074.235	1071.463	1071.699
	1071.936	1073.675	1071.936	1071.936	1073.675	1071.936	1071.699
	1073.721	1072.963	1073.721	1073.721	1072.963	1073.721	1073.930
	1073.825	1072.547	1073.825	1073.825	1072.547	1073.825	1073.930
	1073.376	1070.483	1073.376	1073.376	1070.483	1073.376	1073.739
	1072.201	1069.867	1072.201	1072.201	1069.867	1072.201	1072.201
	1070.515	1069.211	1070.515	1070.515	1069.211	1070.515	1069.211
	1069.969	1068.515	1069.969	1069.969	1068.515	1069.969	1068.515

STRAIGHT

LVC = 360.00 m LVC = 100.00 m LVC = 270.00 m

g = -3.000% g = -1.300%

R = 5000.00 L = 1447.451

PLAN AND PROFILE
STA. 323+700 - STA. 324+400
(SECTION-6)

Scale AS SHOWN

Drawing title

Sheet No. C-33 (3/4)

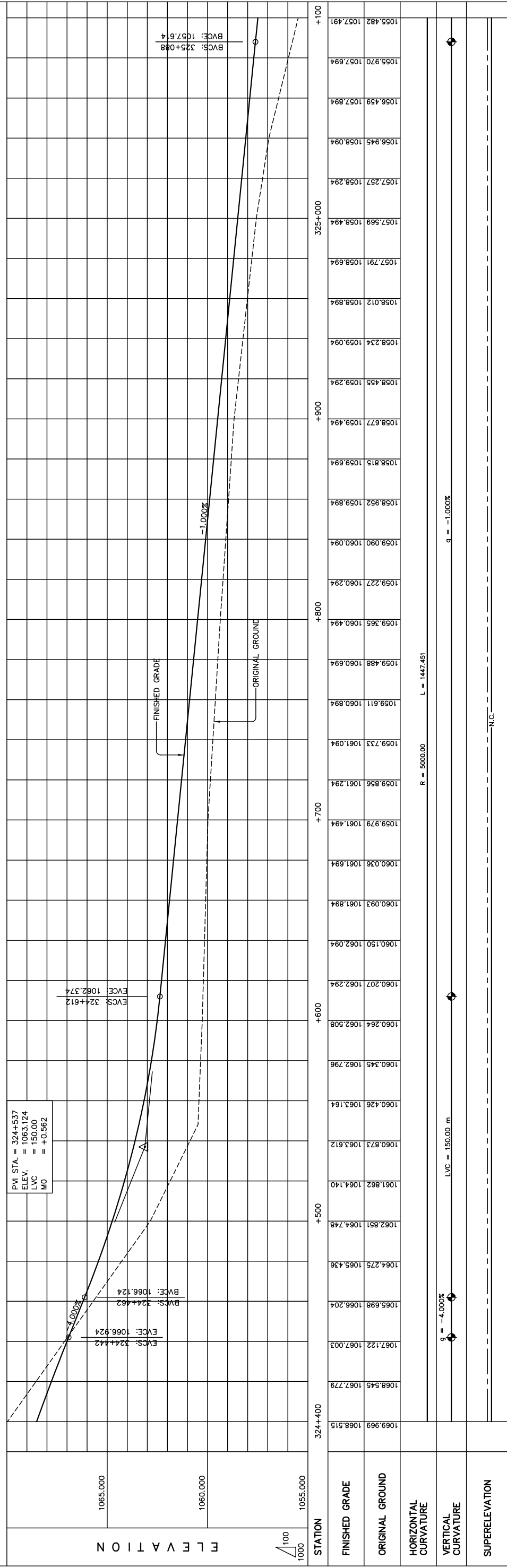
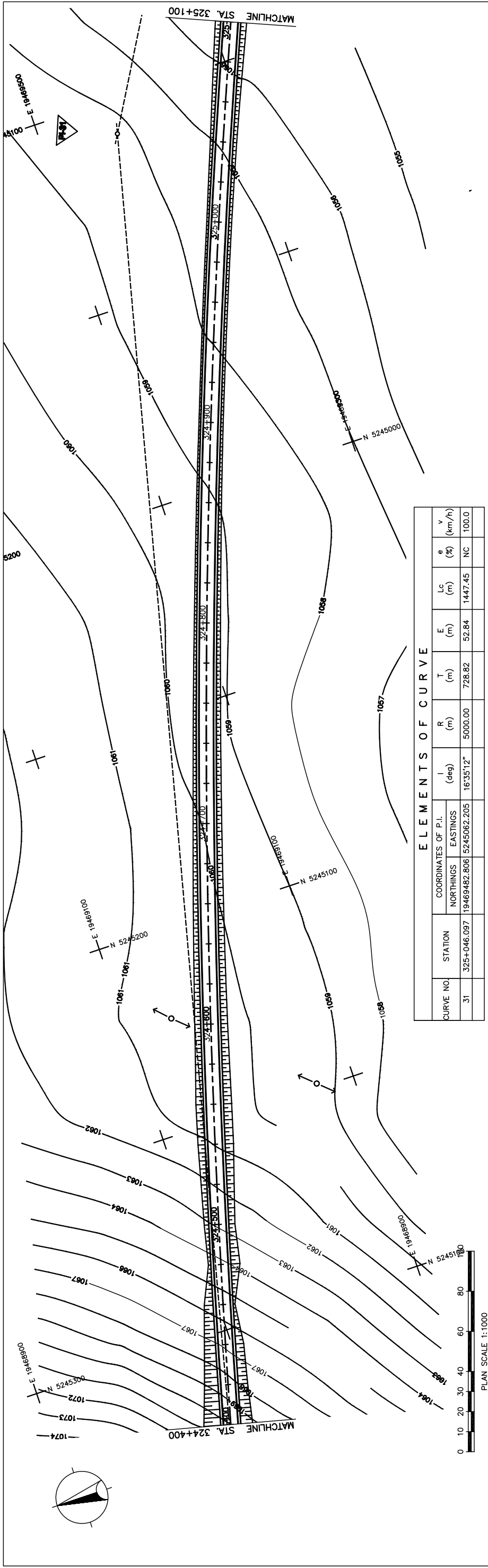
THE BASIC DESIGN STUDY ON CONSTRUCTION OF EASTERN ARTERIAL ROAD IN MONGOLIA

JAPAN INTERNATIONAL COOPERATION AGENCY (JICA)
MINISTRY OF INFRASTRUCTURE
THE GOVERNMENT OF MONGOLIA

PACIFIC CONSULTANTS INTERNATIONAL
JAPAN OVERSEAS CONSULTANTS

DEPARTMENT OF ROADS,
MINISTRY OF INFRASTRUCTURE,
THE GOVERNMENT OF MONGOLIA

図 3-2-3-83 全体平面・縦断面 (Section VI Sta.323+700-Sta.324+400)



THE BASIC DESIGN STUDY ON CONSTRUCTION OF EASTERN ARTERIAL ROAD IN MONGOLIA

JAPAN INTERNATIONAL COOPERATION AGENCY (JICA)
 DEPARTMENT OF ROADS,
 MINISTRY OF INFRASTRUCTURE,
 THE GOVERNMENT OF MONGOLIA

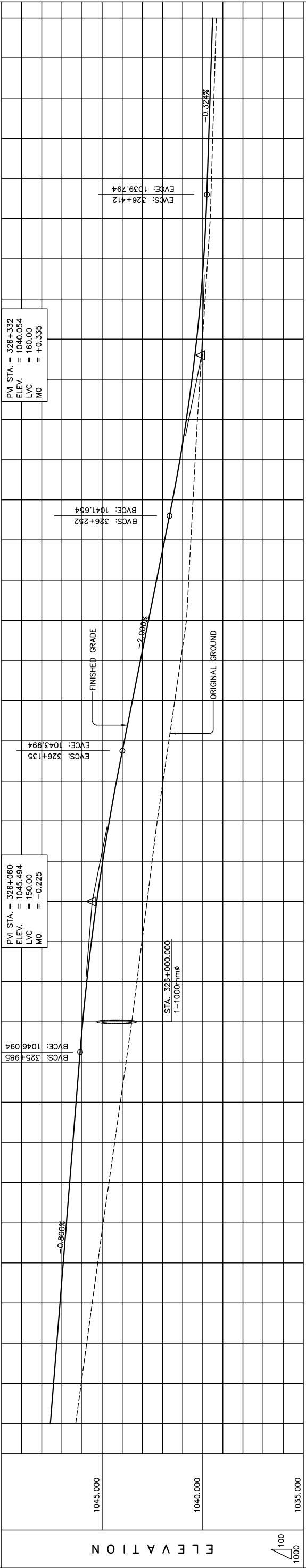
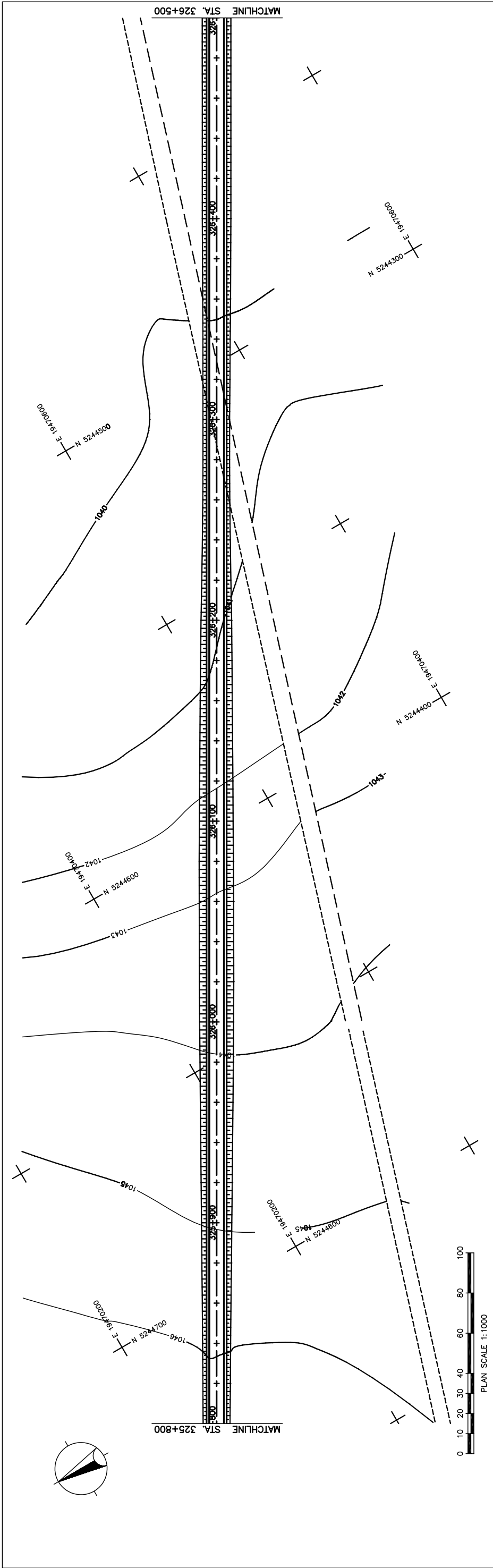
PACIFIC CONSULTANTS INTERNATIONAL
 JAPAN OVERSEAS CONSULTANTS

Drawing title
PLAN AND PROFILE
 STA. 324+400 - STA. 325+100
 (SECTION-6)

Scale
 AS SHOWN

Sheet No.
 C-34
 34/41

図 3-2-3-84 全体平面・縦断面 (Section VI Sta.324+400-Sta.325+100)



STATION	FINISHED GRADE	ORIGINAL GROUND	HORIZONTAL CURVATURE	VERTICAL CURVATURE	SUPERELEVATION
325+800	1046.313	1047.574			
	1046.039	1047.414			
	1045.766	1047.254			
	1045.492	1047.094			
	1045.219	1046.934			
	1044.945	1046.774			
	1044.661	1046.614			
	1044.377	1046.454			
	1044.094	1046.294			
	1043.810	1046.134			
	1043.526	1045.974			
	1043.274	1045.814			
	1043.021	1045.654			
	1042.769	1045.494			
	1042.516	1045.334			
	1042.264	1045.174			
	1041.972	1045.014			
	1041.681	1044.854			
	1041.389	1044.694			
	1041.098	1044.534			
	1040.806	1044.374			
	1040.698	1044.214			
	1040.590	1044.054			
	1040.481	1043.894			
	1040.373	1043.734			
	1040.265	1043.574			
	1040.137	1043.414			
	1040.009	1043.254			
	1039.881	1043.094			
	1039.753	1042.934			
	1039.625	1042.774			
	1039.565	1042.614			
	1039.505	1042.454			
	1039.444	1042.294			
	1039.384	1042.134			
	1039.324	1041.974			
	1039.509	1041.814			

VERTICAL CURVATURE: $g = -2.000\%$ (LVC = 150.00 m), $g = -0.800\%$ (LVC = 150.00 m), $g = -0.324\%$ (LVC = 160.00 m)

THE BASIC DESIGN STUDY ON CONSTRUCTION OF EASTERN ARTERIAL ROAD IN MONGOLIA

JAPAN INTERNATIONAL COOPERATION AGENCY (JICA)

DEPARTMENT OF ROADS,
MINISTRY OF INFRASTRUCTURE,
THE GOVERNMENT OF MONGOLIA

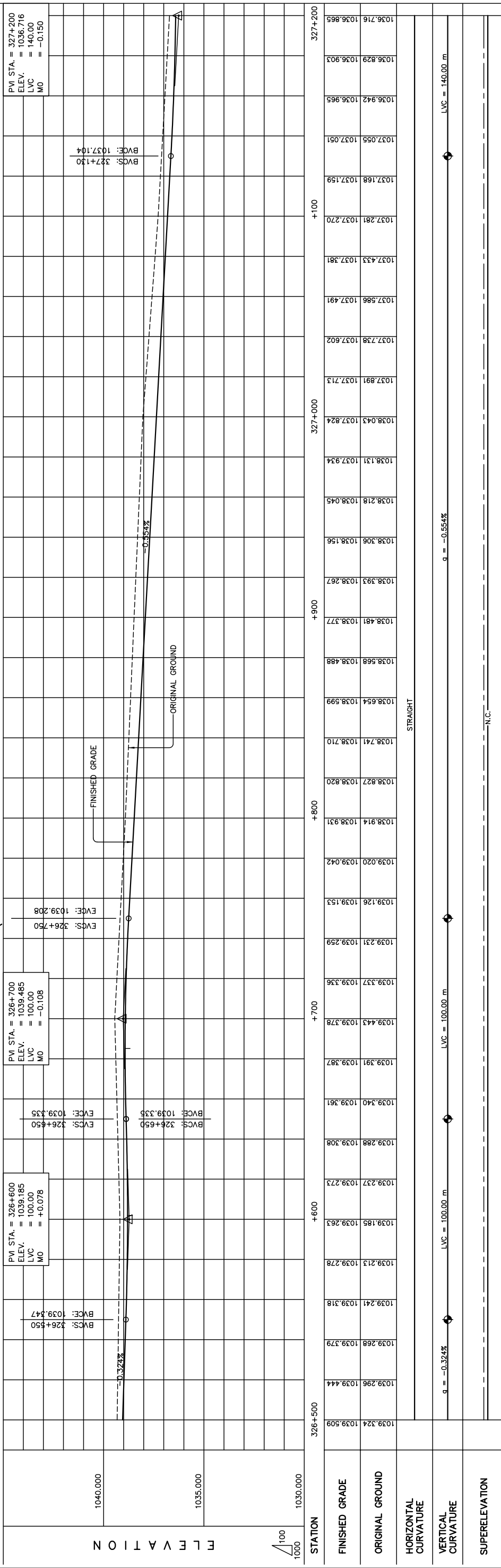
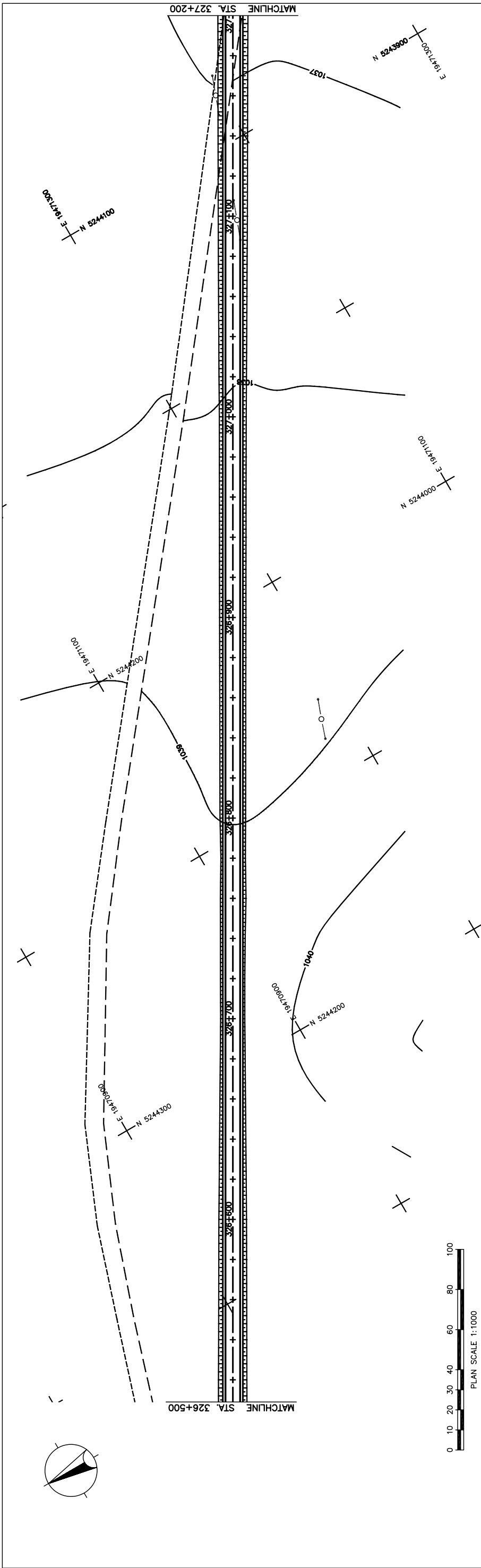
PACIFIC CONSULTANTS INTERNATIONAL
JAPAN OVERSEAS CONSULTANTS

Drawing title
PLAN AND PROFILE
STA. 325+800 - STA. 326+500
(SECTION-6)

Scale
AS SHOWN

Sheet No.
C-36
36/41

図 3-2-3-86 全体平面・縦断面 (Section VI Sta. 325+800-Sta. 326+500)



STATION	FINISHED GRADE	ORIGINAL GROUND	HORIZONTAL CURVATURE	VERTICAL CURVATURE	SUPERELEVATION
326+500	1039.324	1039.509			
	1039.296	1039.444			
	1039.268	1039.379			
	1039.241	1039.318			
	1039.213	1039.278			
	1039.185	1039.263			
	1039.237	1039.273			
	1039.288	1039.308			
	1039.340	1039.361			
	1039.391	1039.387			
	1039.443	1039.378			
	1039.337	1039.336			
	1039.231	1039.259			
	1039.126	1039.153			
	1039.020	1039.042			
	1038.914	1038.931			
	1038.827	1038.820			
	1038.741	1038.710			
	1038.654	1038.599			
	1038.568	1038.488			
	1038.481	1038.377			
	1038.393	1038.267			
	1038.306	1038.156			
	1038.218	1038.045			
	1038.131	1037.934			
	1038.043	1037.824			
	1037.891	1037.713			
	1037.738	1037.602			
	1037.586	1037.491			
	1037.433	1037.381			
	1037.281	1037.270			
	1037.168	1037.159			
	1037.055	1037.051			
	1036.942	1036.965			
	1036.829	1036.903			
	1036.716	1036.865			

THE BASIC DESIGN STUDY ON CONSTRUCTION OF EASTERN ARTERIAL ROAD IN MONGOLIA

JAPAN INTERNATIONAL COOPERATION AGENCY (JICA)
 DEPARTMENT OF ROADS,
 MINISTRY OF INFRASTRUCTURE,
 THE GOVERNMENT OF MONGOLIA

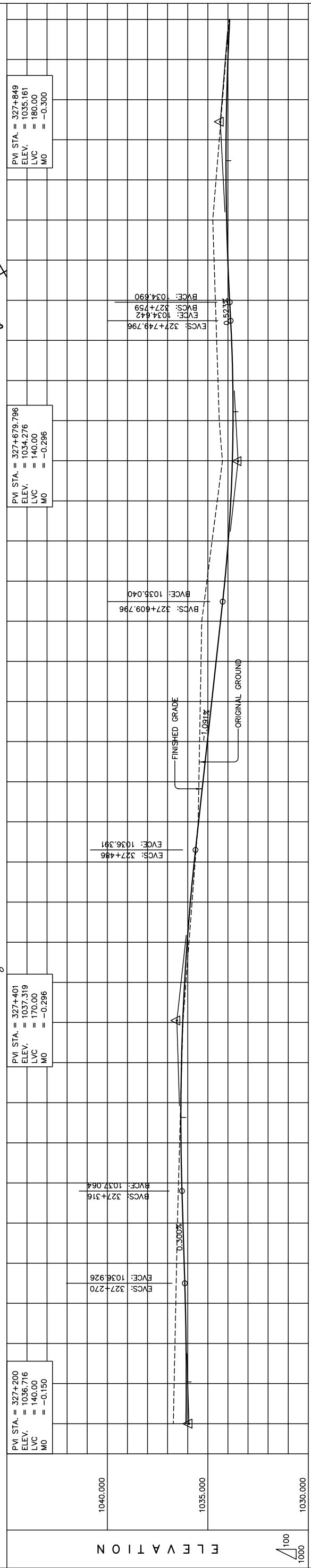
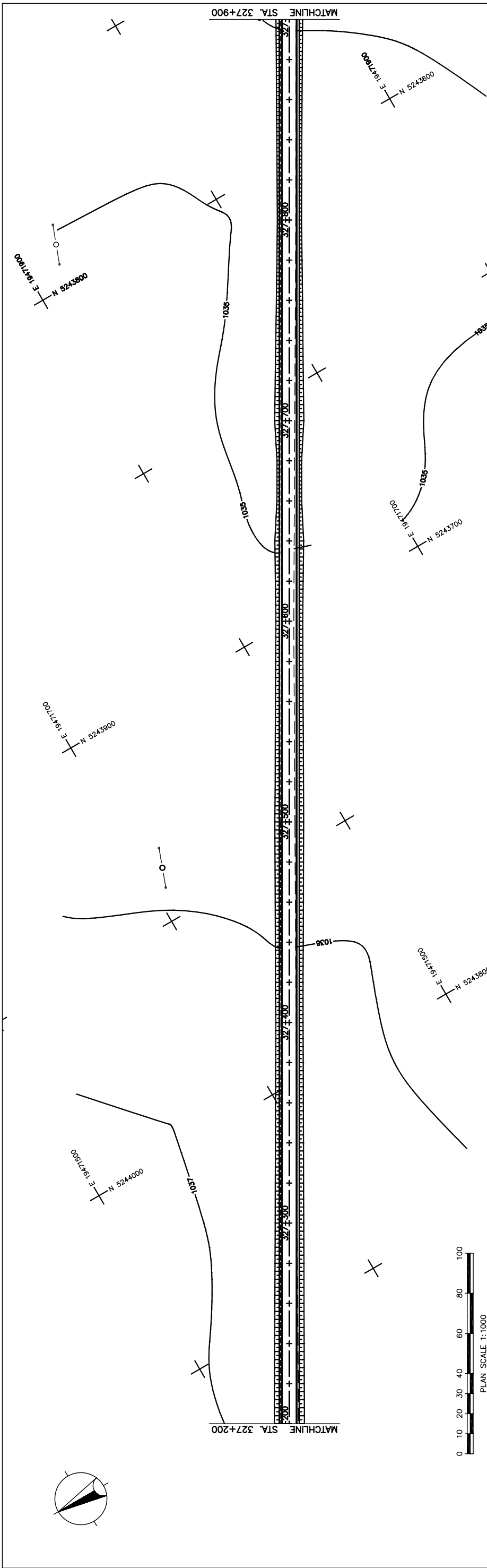
PACIFIC CONSULTANTS INTERNATIONAL
 JAPAN OVERSEAS CONSULTANTS

Drawing title
 PLAN AND PROFILE
 STA. 326+500 - STA. 327+200
 (SECTION-6)

Scale
 AS SHOWN

Sheet No.
 C-37
 37/41

図 3-2-3-87 全体平面・縦断面 (Section VI Sta.326+500-Sta.327+200)



STATION	FINISHED GRADE	ORIGINAL GROUND	HORIZONTAL CURVATURE	VERTICAL CURVATURE	SUPERELEVATION
1036.716	1036.865	1036.716			
1036.675	1036.852	1036.675			
1036.635	1036.863	1036.635			
1036.594	1036.899	1036.594			
1036.554	1036.956	1036.554			
1036.513	1037.016	1036.513			
1036.459	1037.075	1036.459			
1036.405	1037.112	1036.405			
1036.350	1037.117	1036.350			
1036.296	1037.088	1036.296			
1036.242	1037.027	1036.242			
1036.090	1036.933	1036.090			
1035.937	1036.807	1035.937			
1035.785	1036.647	1035.785			
1035.632	1036.455	1035.632			
1035.480	1036.238	1035.480			
1035.445	1036.020	1035.445			
1035.409	1035.802	1035.409			
1035.374	1035.584	1035.374			
1035.338	1035.365	1035.338			
1035.303	1035.147	1035.303			
1035.046	1034.935	1035.046			
1034.788	1034.763	1034.788			
1034.531	1034.637	1034.531			
1034.278	1034.558	1034.278			
1034.431	1034.525	1034.431			
1034.496	1034.538	1034.496			
1034.560	1034.597	1034.560			
1034.625	1034.696	1034.625			
1034.689	1034.784	1034.689			
1034.754	1034.843	1034.754			
1034.592	1034.872	1034.592			
1034.430	1034.871	1034.430			
1034.269	1034.841	1034.269			
1034.107	1034.781	1034.107			
1033.945	1034.691	1033.945			

STRAIGHT

g = -1.091%

LVC = 170.00 m

g = 0.300%

LVC = 180.00 m

g = 0.523%

LVC = 180.00 m

N.C.

THE BASIC DESIGN STUDY ON CONSTRUCTION OF EASTERN ARTERIAL ROAD IN MONGOLIA

JAPAN INTERNATIONAL COOPERATION AGENCY (JICA)

MINISTRY OF INFRASTRUCTURE, THE GOVERNMENT OF MONGOLIA

PACIFIC CONSULTANTS INTERNATIONAL JAPAN OVERSEAS CONSULTANTS

Drawing title

Scale

AS SHOWN

Sheet No.

C-38

38/41

図 3-2-3-88 全体平面・縦断面 (Section VI Sta.327+200-Sta.327+900)