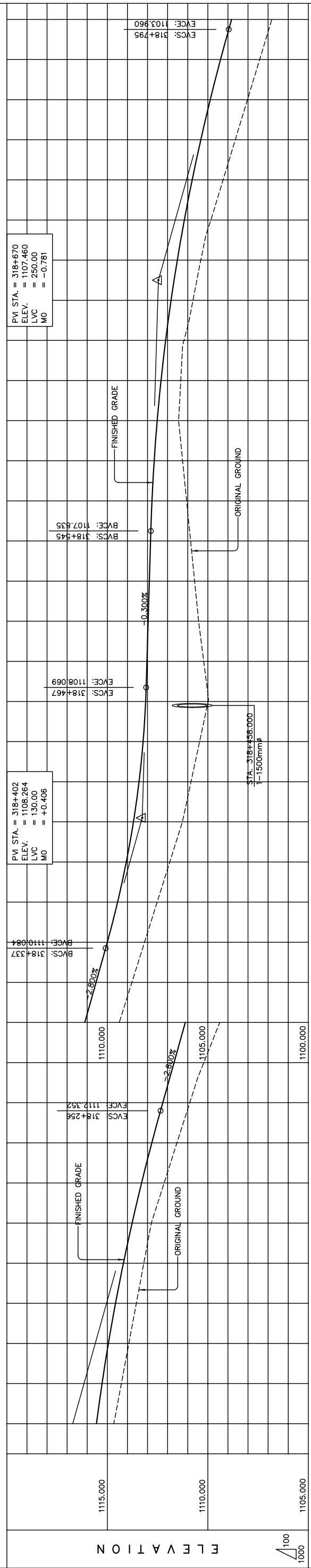


ELEMENTS OF CURVE

CURVE NO.	STATION	COORDINATES OF P.I.		I (deg)	R (m)	T (m)	E (m)	Lc (m)	e (%)	v (km/h)
		NORTHINGS	EASTINGS							
29	318+277.696	194630.39	792524.71	16°20'11"	5000.00	717.67	51.24	1425.61	NC	100.0

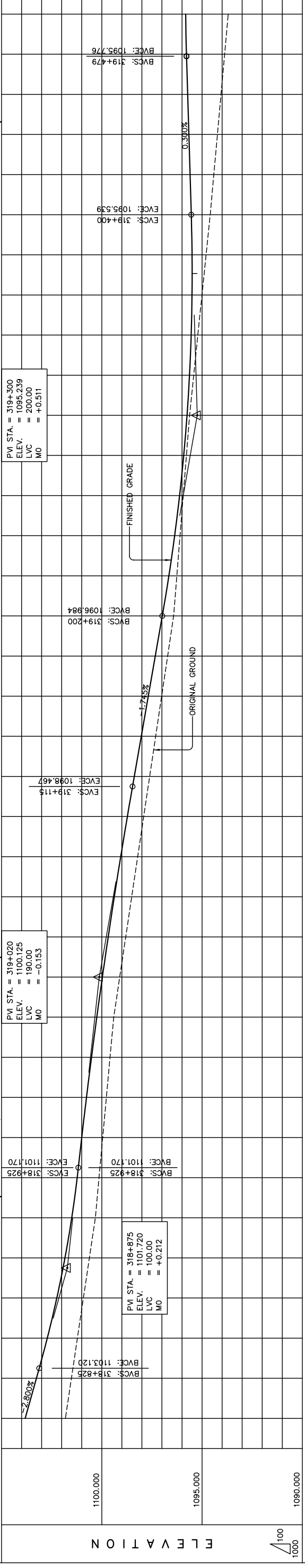
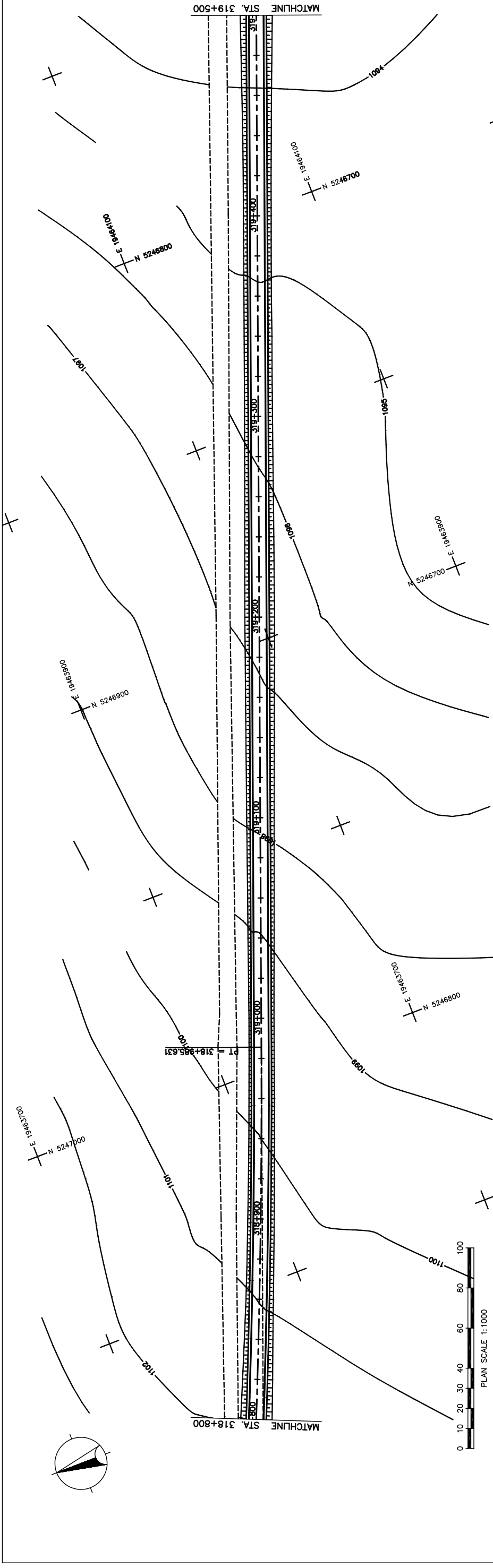


STATION	FINISHED GRADE	ORIGINAL GROUND	HORIZONTAL CURVATURE	VERTICAL CURVATURE	SUPERELEVATION
1115.000					
1110.000					
1105.000					
318+100	1114.675	1115.541			
	1114.302	1115.264			
	1113.930	1114.948			
	1113.557	1114.593			
	1113.185	1114.200			
+200	1112.812	1113.768			
	1112.440	1113.327			
	1112.068	1112.887			
	1111.696	1112.447			
+300	1109.406	1111.120			
	1108.778	1110.560			
	1108.149	1110.000			
	1107.521	1109.440			
	1106.892	1109.057			
	1106.264	1108.701			
+400	1105.837	1108.422			
	1105.409	1108.220			
	1104.982	1108.094			
	1105.204	1108.030			
	1105.459	1107.970			
+500	1105.658	1107.910			
	1105.857	1107.850			
	1105.857	1107.850			
	1106.056	1107.778			
	1106.255	1107.668			
	1106.454	1107.518			
+600	1106.454	1107.518			
	1106.347	1107.328			
	1106.187	1107.098			
	1105.739	1106.828			
	1105.351	1106.518			
	1104.846	1106.168			
+700	1104.240	1105.778			
	1103.633	1105.348			
	1103.027	1104.878			
	1102.420	1104.368			
+800	1101.814	1103.820			

THE BASIC DESIGN STUDY ON CONSTRUCTION OF EASTERN ARTERIAL ROAD IN MONGOLIA

JAPAN INTERNATIONAL COOPERATION AGENCY (JICA) PACIFIC CONSULTANTS INTERNATIONAL JAPAN OVERSEAS CONSULTANTS	DEPARTMENT OF ROADS, MINISTRY OF INFRASTRUCTURE, THE GOVERNMENT OF MONGOLIA
Drawing title	Sheet No.
PLAN AND PROFILE STA. 318+100 - STA. 318+800 (SECTION-6)	AS SHOWN C-25 25/41

図 3-2-3-75 全体平面・縦断面 (Section VI Sta.318+100-Sta.318+800)



STATION	FINISHED GRADE	ORIGINAL GROUND	HORIZONTAL CURVATURE	VERTICAL CURVATURE	SUPERELEVATION
318+800	1103.820	1103.260		$g = -2.800\%$	
	1101.814	1102.244			
	1101.216	1102.719			
	1100.918	1102.244			
	1100.619	1101.837			
	1100.320	1101.498			
	1100.137	1101.227			
	1099.955	1101.001			
	1099.772	1100.764			
	1099.589	1100.513			
	1099.404	1100.249			
319+000	1099.105	1099.971			
	1098.807	1099.680			
	1098.508	1099.375			
	1098.210	1099.057			
	1097.911	1088.725			
	1097.612	1098.380			
	1097.313	1098.031			
	1097.015	1097.682			
	1096.716	1097.333			
	1096.417	1096.984			
	1096.258	1096.655			
	1096.099	1096.367			
	1095.940	1096.121			
	1095.781	1095.915			
	1095.622	1095.750			
	1095.416	1095.626			
	1095.210	1095.543			
	1095.005	1095.500			
	1094.799	1095.499			
	1094.593	1095.539			
	1094.413	1095.599			
	1094.234	1095.659			
	1094.054	1095.719			
	1093.875	1095.779			
319+500	1093.695	1095.816		$g = 0.300\%$	

THE BASIC DESIGN STUDY ON CONSTRUCTION OF EASTERN ARTERIAL ROAD IN MONGOLIA

JAPAN INTERNATIONAL COOPERATION AGENCY (JICA)
 DEPARTMENT OF ROADS,
 MINISTRY OF INFRASTRUCTURE,
 THE GOVERNMENT OF MONGOLIA

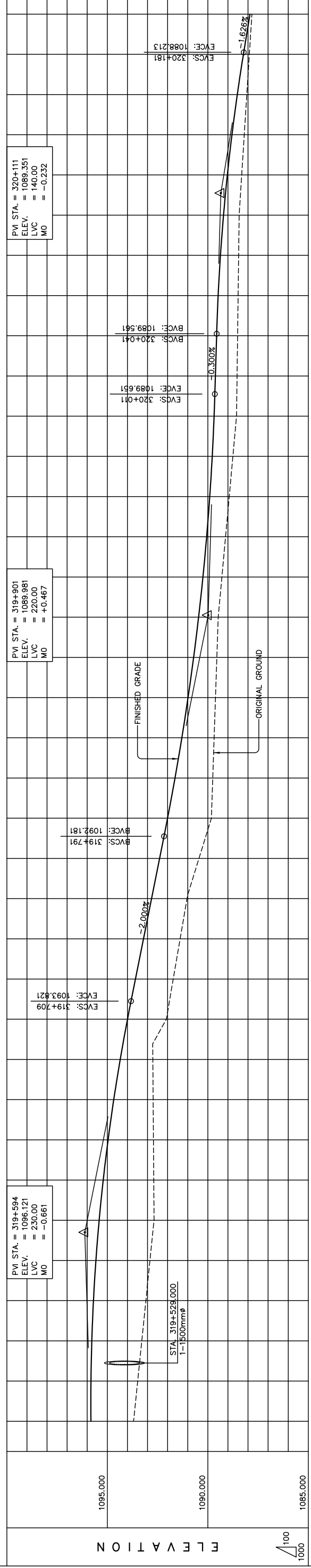
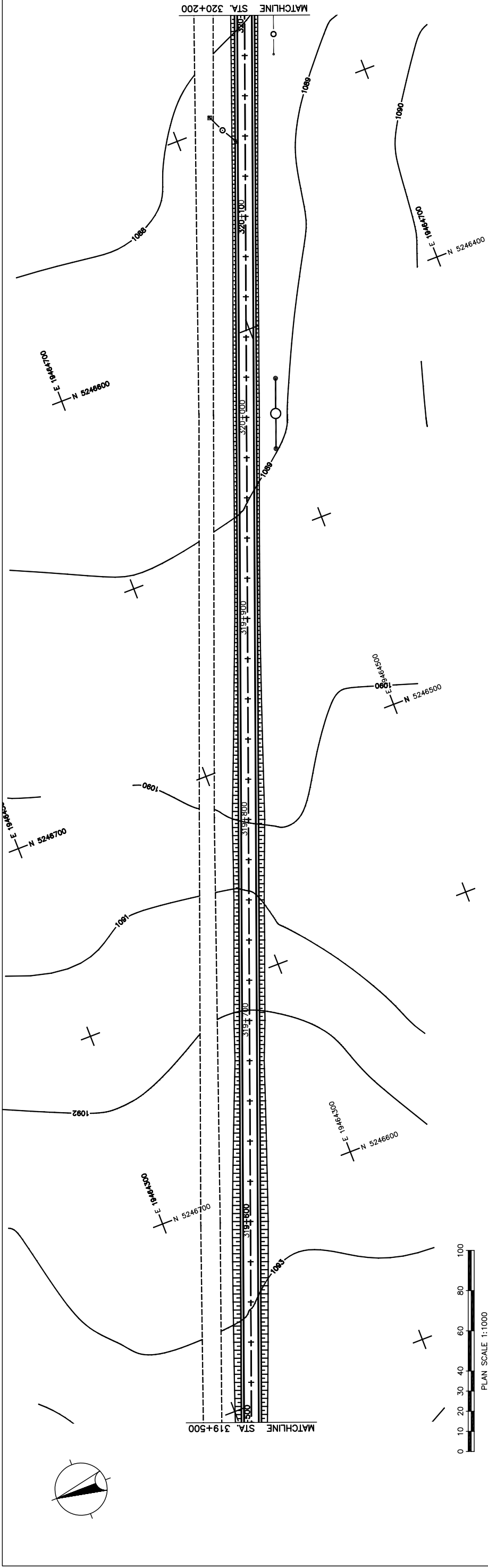
PACIFIC CONSULTANTS INTERNATIONAL
 JAPAN OVERSEAS CONSULTANTS

Drawing title
PLAN AND PROFILE
 STA. 318+800 - STA. 319+500
 (SECTION-6)

Scale
 AS SHOWN

Sheet No.
 C-26
 26 / 41

図 3-2-3-76 全体平面・縦断面図 (Section VI Sta. 318+800-Sta. 319+500)



STATION	FINISHED GRADE	ORIGINAL GROUND	HORIZONTAL CURVATURE	VERTICAL CURVATURE	SUPERELEVATION
319+500	1093.695	1095.816			
	1093.491	1095.814			
	1093.287	1095.772			
	1093.083	1095.690			
	1092.879	1095.568			
	1092.675	1095.406			
	1092.690	1095.204			
	1092.706	1094.962			
	1092.721	1094.680			
	1092.736	1094.358			
	1092.663	1093.996			
	1091.720	1093.601			
	1091.378	1093.201			
	1091.035	1092.801			
	1090.440	1092.401			
	1089.823	1092.004			
	1089.755	1091.633			
	1089.687	1091.293			
	1089.618	1090.984			
	1089.550	1090.707			
	1089.482	1090.460			
	1089.300	1090.243			
	1089.118	1090.058			
	1088.935	1089.904			
	1088.753	1089.781			
	1088.571	1089.688			
	1088.545	1089.624			
	1088.519	1089.564			
	1088.493	1089.486			
	1088.467	1089.371			
	1088.441	1089.219			
	1088.314	1089.028			
	1088.187	1088.799			
	1088.061	1088.533			
	1087.934	1088.229			
	1087.807	1087.904			

STRAIGHT
 $g = -2.000\%$
 $g = -0.300\%$
 $g = -1.626\%$

LVC = 230.00 m
LVC = 140.00 m

Scale: N.C.

THE BASIC DESIGN STUDY ON CONSTRUCTION OF EASTERN ARTERIAL ROAD IN MONGOLIA

JAPAN INTERNATIONAL COOPERATION AGENCY (JICA)
PACIFIC CONSULTANTS INTERNATIONAL
JAPAN OVERSEAS CONSULTANTS

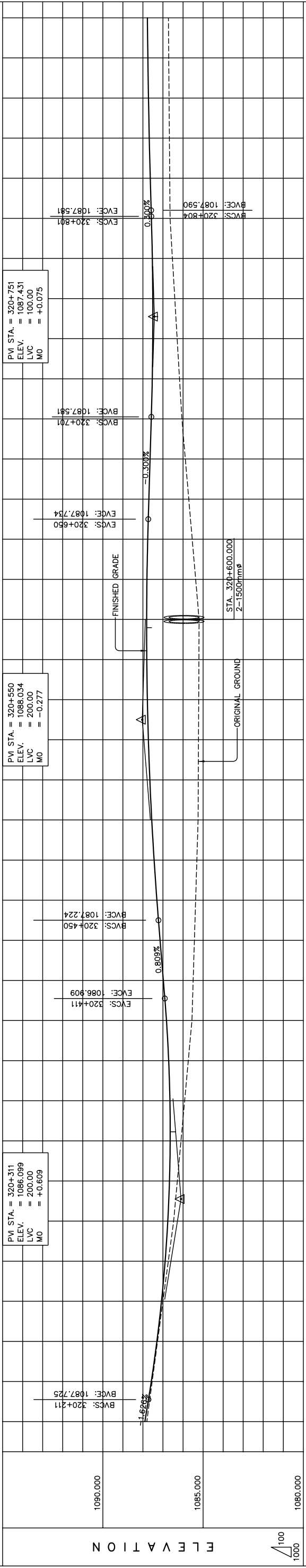
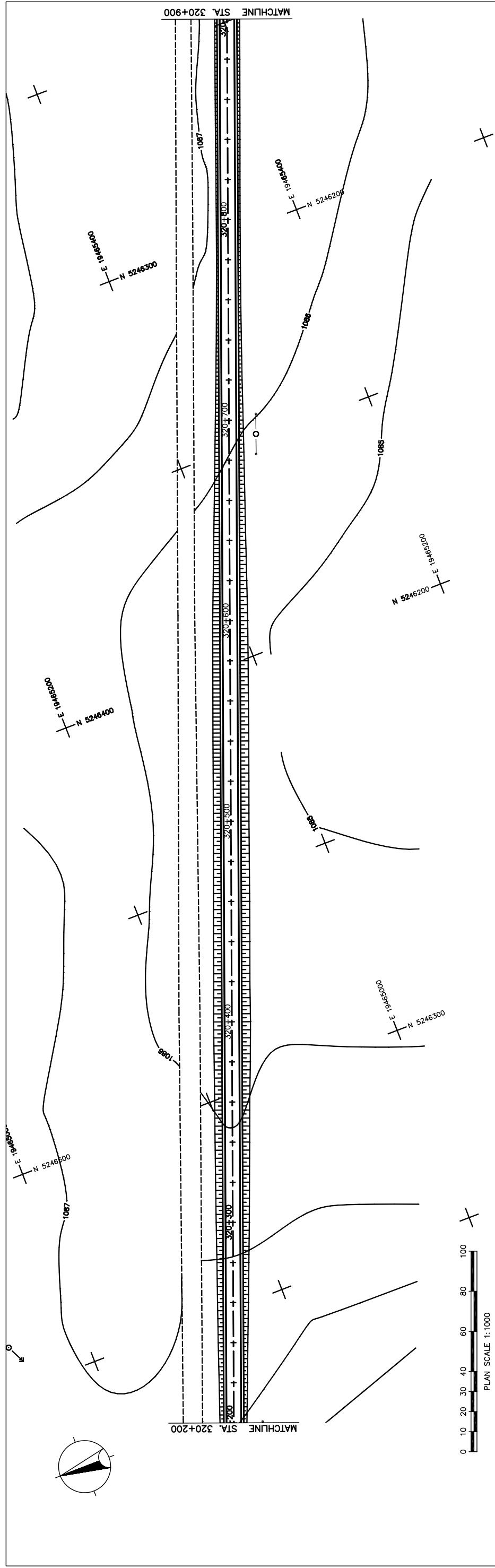
DEPARTMENT OF ROADS,
MINISTRY OF INFRASTRUCTURE,
THE GOVERNMENT OF MONGOLIA

Drawing title
PLAN AND PROFILE
STA. 319+500 - STA. 320+200
(SECTION-6)

Scale
AS SHOWN

Sheet No.
C-27
27/41

図 3-2-3-77 全体平面・縦断面 (Section VI Sta. 319+500-Sta. 320+200)



STATION	FINISHED GRADE	ORIGINAL GROUND	HORIZONTAL CURVATURE	VERTICAL CURVATURE	SUPERELEVATION
1087.807	1087.904	1087.539	1087.583		
1087.271	1087.305	1087.271	1087.305		
1087.003	1087.074	1087.003	1087.074		
1086.735	1086.893	1086.735	1086.893		
1086.467	1086.760	1086.467	1086.760		
1086.285	1086.676	1086.285	1086.676		
1086.102	1086.641	1086.102	1086.641		
1085.920	1086.654	1085.920	1086.654		
1085.737	1086.716	1085.737	1086.716		
1085.555	1086.827	1085.555	1086.827		
1085.494	1086.981	1085.494	1086.981		
1085.433	1087.143	1085.433	1087.143		
1085.371	1087.302	1085.371	1087.302		
1085.310	1087.442	1085.310	1087.442		
1085.249	1087.559	1085.249	1087.559		
1085.239	1087.655	1085.239	1087.655		
1085.229	1087.728	1085.229	1087.728		
1085.218	1087.779	1085.218	1087.779		
1085.208	1087.808	1085.208	1087.808		
1085.198	1087.814	1085.198	1087.814		
1085.370	1087.799	1085.370	1087.799		
1085.542	1087.761	1085.542	1087.761		
1085.713	1087.704	1085.713	1087.704		
1085.885	1087.644	1085.885	1087.644		
1086.057	1087.584	1086.057	1087.584		
1086.175	1087.534	1086.175	1087.534		
1086.293	1087.509	1086.293	1087.509		
1086.411	1087.508	1086.411	1087.508		
1086.529	1087.531	1086.529	1087.531		
1086.647	1087.578	1086.647	1087.578		
1086.663	1087.635	1086.663	1087.635		
1086.680	1087.683	1086.680	1087.683		
1086.696	1087.723	1086.696	1087.723		
1086.713	1087.754	1086.713	1087.754		
1086.729	1087.776	1086.729	1087.776		

STRAIGHT
LVC = 200.00 m
g = 0.809%

STRAIGHT
LVC = 100.00 m
g = -0.300%

STRAIGHT
LVC = 100.00 m
g = 0.300%

THE BASIC DESIGN STUDY ON CONSTRUCTION OF EASTERN ARTERIAL ROAD IN MONGOLIA

JAPAN INTERNATIONAL COOPERATION AGENCY (JICA)
PACIFIC CONSULTANTS INTERNATIONAL
JAPAN OVERSEAS CONSULTANTS

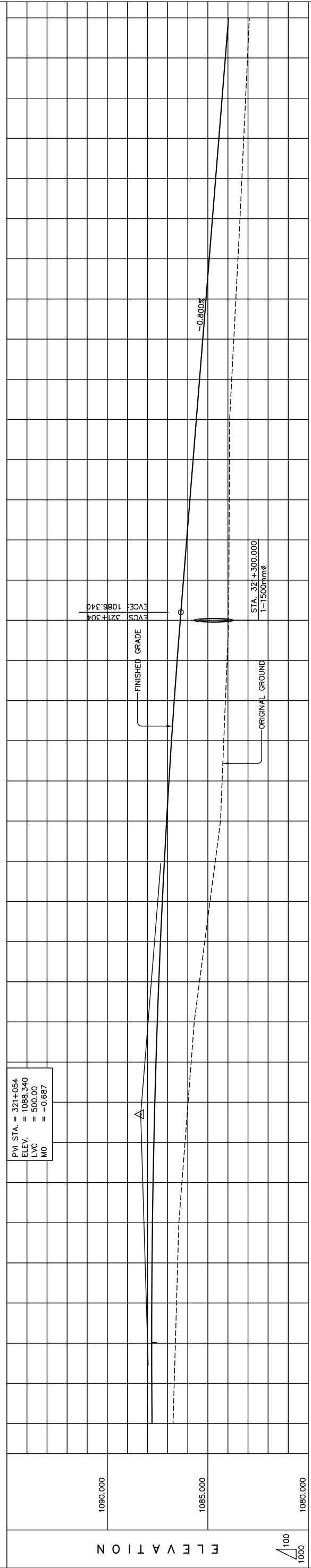
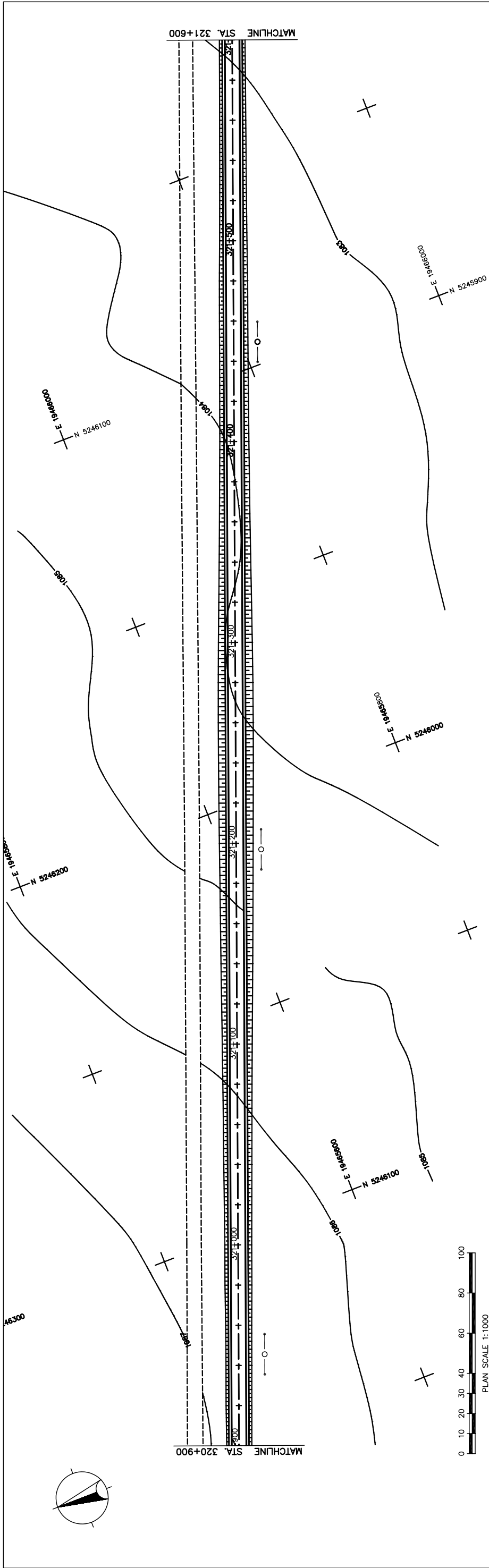
DEPARTMENT OF ROADS,
MINISTRY OF INFRASTRUCTURE,
THE GOVERNMENT OF MONGOLIA

Drawing title
PLAN AND PROFILE
STA. 320+200 - STA. 320+900
(SECTION-6)

Scale
AS SHOWN

Sheet No.
C-28
28 (4)

図 3-2-3-78 全体平面・縦断面 (Section VI Sta.320+200-Sta.320+900)



STATION	FINISHED GRADE	ORIGINAL GROUND	HORIZONTAL CURVATURE	VERTICAL CURVATURE	SUPERELEVATION
320+900	1086.729	1087.776			
	1086.672	1087.789			
	1086.614	1087.794			
	1086.557	1087.790			
	1086.499	1087.777			
	1086.442	1087.755			
321+000	1086.289	1087.724			
	1086.135	1087.685			
	1085.982	1087.637			
	1085.828	1087.580			
	1085.675	1087.514			
	1085.414	1087.439			
	1085.153	1087.356			
	1084.892	1087.263			
	1084.631	1087.162			
	1084.370	1087.053			
	1084.288	1086.934			
	1084.207	1086.806			
	1084.125	1086.670			
	1084.044	1086.525			
	1083.962	1086.371			
	1083.952	1086.212			
	1083.943	1086.052			
	1083.933	1085.892			
	1083.924	1085.732			
	1083.914	1085.572			
	1083.811	1085.412			
	1083.708	1085.252			
	1083.605	1085.092			
	1083.502	1084.932			
	1083.399	1084.772			
	1083.306	1084.612			
	1083.213	1084.452			
	1083.119	1084.292			
	1083.026	1084.132			
321+600	1082.933	1083.972			

STRAIGHT

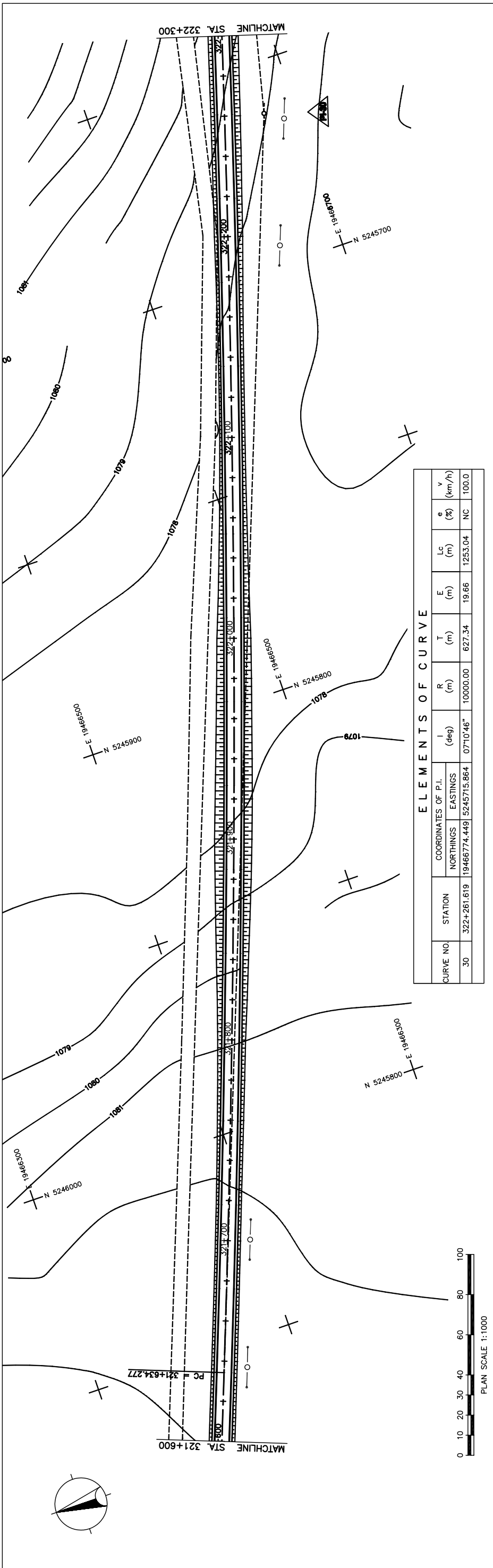
LVC = 500.00 m

g = -0.800%

N.C.

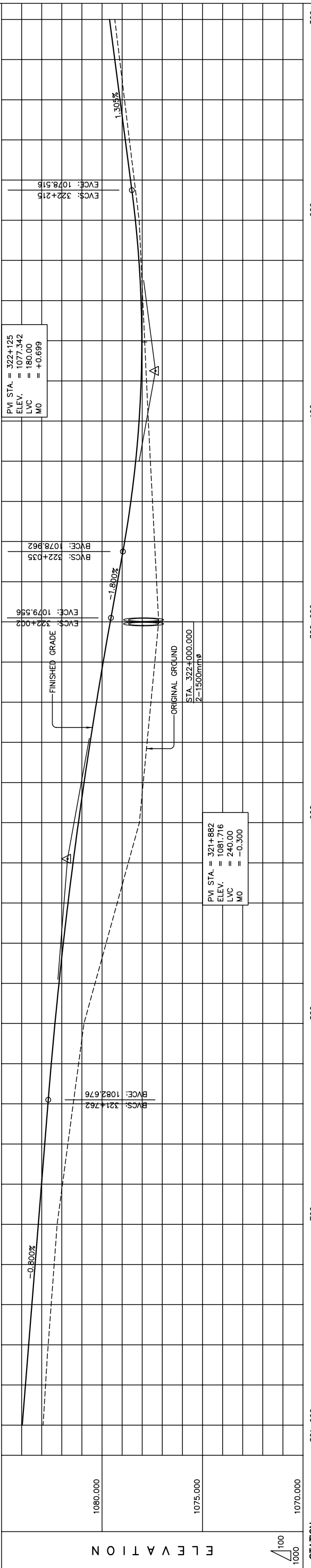
THE BASIC DESIGN STUDY ON CONSTRUCTION OF EASTERN ARTERIAL ROAD IN MONGOLIA	
JAPAN INTERNATIONAL COOPERATION AGENCY (JICA)	DEPARTMENT OF ROADS, MINISTRY OF INFRASTRUCTURE, THE GOVERNMENT OF MONGOLIA
DRAWING TITLE	
PLAN AND PROFILE STA. 320+900 - STA. 321+600 (SECTION-6)	
Scale	AS SHOWN
Sheet No.	C-29 29/41

図 3-2-3-79 全体平面・縦断面 (Section VI Sta. 320+900-Sta. 321+600)



ELEMENTS OF CURVE

CURVE NO.	STATION	COORDINATES OF P.I.		I (deg)	R (m)	T (m)	E (m)	Lc (m)	e (%)	v (km/h)
		NORTHINGS	EASTINGS							
30	322+261.619	19466774.449	5245715.864	07°10'46"	10000.00	627.34	19.66	1253.04	NC	100.0



STATION	FINISHED GRADE	ORIGINAL GROUND	HORIZONTAL CURVATURE	VERTICAL CURVATURE	SUPERELEVATION
321+600	1082.933	1083.972			
	1082.810	1083.812			
	1082.678	1083.652			
	1082.529	1083.492			
	1082.381	1083.332			
	1082.233	1083.172			
	1081.966	1083.012			
	1081.699	1082.852			
	1081.433	1082.692			
	1081.166	1082.532			
	1080.899	1082.372			
	1080.632	1082.212			
	1080.365	1082.052			
	1080.098	1081.892			
	1079.831	1081.732			
	1079.564	1081.572			
	1079.297	1081.412			
	1079.030	1081.252			
	1078.763	1081.092			
	1078.496	1080.932			
	1078.229	1080.772			
	1077.962	1080.612			
	1077.695	1080.452			
	1077.428	1080.292			
	1077.161	1080.132			
	1076.894	1080.000			
	1076.627	1079.868			
	1076.360	1079.736			
	1076.093	1079.604			
	1075.826	1079.472			
	1075.559	1079.340			
	1075.292	1079.208			
	1075.025	1079.076			
	1074.758	1078.944			
	1074.491	1078.812			
	1074.224	1078.680			
	1073.957	1078.548			
	1073.690	1078.416			
	1073.423	1078.284			
	1073.156	1078.152			
	1072.889	1078.020			
	1072.622	1077.888			
	1072.355	1077.756			
	1072.088	1077.624			
	1071.821	1077.492			
	1071.554	1077.360			
	1071.287	1077.228			
	1071.020	1077.096			
	1070.753	1076.964			
	1070.486	1076.832			
	1070.219	1076.700			
	1070.000	1076.568			

THE BASIC DESIGN STUDY ON CONSTRUCTION OF EASTERN ARTERIAL ROAD IN MONGOLIA

JAPAN INTERNATIONAL COOPERATION AGENCY (JICA) PACIFIC CONSULTANTS INTERNATIONAL JAPAN OVERSEAS CONSULTANTS	DEPARTMENT OF ROADS, MINISTRY OF INFRASTRUCTURE, THE GOVERNMENT OF MONGOLIA
Drawing title PLAN AND PROFILE STA. 321+600 - STA. 322+300 (SECTION-6)	
Scale	AS SHOWN
Sheet No.	C-30 30/41

図 3-2-3-80 全体平面・縦断面 (Section VI Sta.321+600-Sta.322+300)