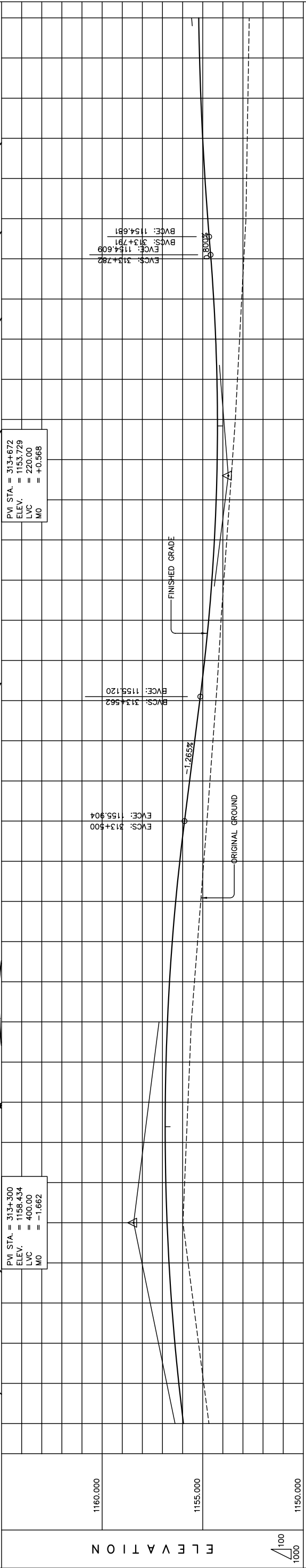


**ELEMENTS OF CURVE 1156**

CURVE NO.	STATION	COORDINATES OF P.I.		L (deg)	R (m)	T (m)	E (m)	Lc (m)	e (%)	v (km/h)
		NORTHINGS	EASTINGS							
28	313+612.687	19459249.309	5249995.767	45°07'09"	2000.000	829.84	165.63	1573.21	2.00	80.0

PVI STA. = 313+300  
 ELEV. = 1158.434  
 LVC = 400.00  
 MO = -1.662

PVI STA. = 313+672  
 ELEV. = 1153.729  
 LVC = 220.00  
 MO = +0.568



STATION	FINISHED GRADE	ORIGINAL GROUND	HORIZONTAL CURVATURE	VERTICAL CURVATURE	SUPERELEVATION
313+200	1154.691	1155.959			
	1154.949	1156.188			
	1155.208	1156.384			
	1155.466	1156.546			
	1155.725	1156.675			
	1155.983	1156.772			
	1156.241	1156.834			
	1156.499	1156.864			
	1156.757	1156.860			
	1157.015	1156.823			
	1157.273	1156.753			
	1157.531	1156.650			
	1157.789	1156.513			
	1158.047	1156.343			
	1158.305	1156.140			
	1158.563	1155.904			
	1158.821	1155.631			
	1159.079	1155.318			
	1159.337	1154.977			
	1159.595	1154.607			
	1159.853	1154.209			
	1200.111	1153.791			
	1200.369	1153.342			
	1200.627	1152.852			
	1200.885	1152.324			
	1201.143	1151.757			
	1201.401	1151.153			
	1201.659	1150.511			
	1201.917	1149.831			
	1202.175	1149.113			
	1202.433	1148.357			
	1202.691	1147.563			
	1202.949	1146.731			
	1203.207	1145.861			
	1203.465	1144.953			
	1203.723	1144.007			
	1203.981	1143.033			
	1204.239	1142.031			
	1204.497	1141.001			
	1204.755	1140.000			
	1205.013	1139.000			
	1205.271	1138.000			
	1205.529	1137.000			
	1205.787	1136.000			
	1206.045	1135.000			
	1206.303	1134.000			
	1206.561	1133.000			
	1206.819	1132.000			
	1207.077	1131.000			
	1207.335	1130.000			
	1207.593	1129.000			
	1207.851	1128.000			
	1208.109	1127.000			
	1208.367	1126.000			
	1208.625	1125.000			
	1208.883	1124.000			
	1209.141	1123.000			
	1209.399	1122.000			
	1209.657	1121.000			
	1209.915	1120.000			
	1210.173	1119.000			
	1210.431	1118.000			
	1210.689	1117.000			
	1210.947	1116.000			
	1211.205	1115.000			
	1211.463	1114.000			
	1211.721	1113.000			
	1211.979	1112.000			
	1212.237	1111.000			
	1212.495	1110.000			
	1212.753	1109.000			
	1213.011	1108.000			
	1213.269	1107.000			
	1213.527	1106.000			
	1213.785	1105.000			
	1214.043	1104.000			
	1214.301	1103.000			
	1214.559	1102.000			
	1214.817	1101.000			
	1215.075	1100.000			
	1215.333	1099.000			
	1215.591	1098.000			
	1215.849	1097.000			
	1216.107	1096.000			
	1216.365	1095.000			
	1216.623	1094.000			
	1216.881	1093.000			
	1217.139	1092.000			
	1217.397	1091.000			
	1217.655	1090.000			
	1217.913	1089.000			
	1218.171	1088.000			
	1218.429	1087.000			
	1218.687	1086.000			
	1218.945	1085.000			
	1219.203	1084.000			
	1219.461	1083.000			
	1219.719	1082.000			
	1220.000	1081.000			

**PLAN AND PROFILE STA. 313+200 - STA. 313+900 (SECTION-6)**

Drawing title: PLAN AND PROFILE STA. 313+200 - STA. 313+900 (SECTION-6)

Scale: AS SHOWN

Sheet No. C-18 (18/4)

---

THE BASIC DESIGN STUDY ON CONSTRUCTION OF EASTERN ARTERIAL ROAD IN MONGOLIA

JAPAN INTERNATIONAL COOPERATION AGENCY (JICA)

PACIFIC CONSULTANTS INTERNATIONAL

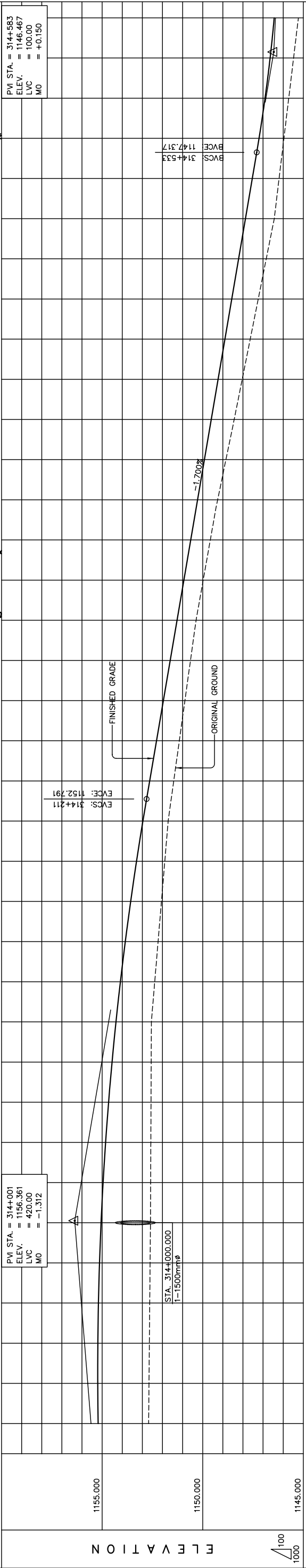
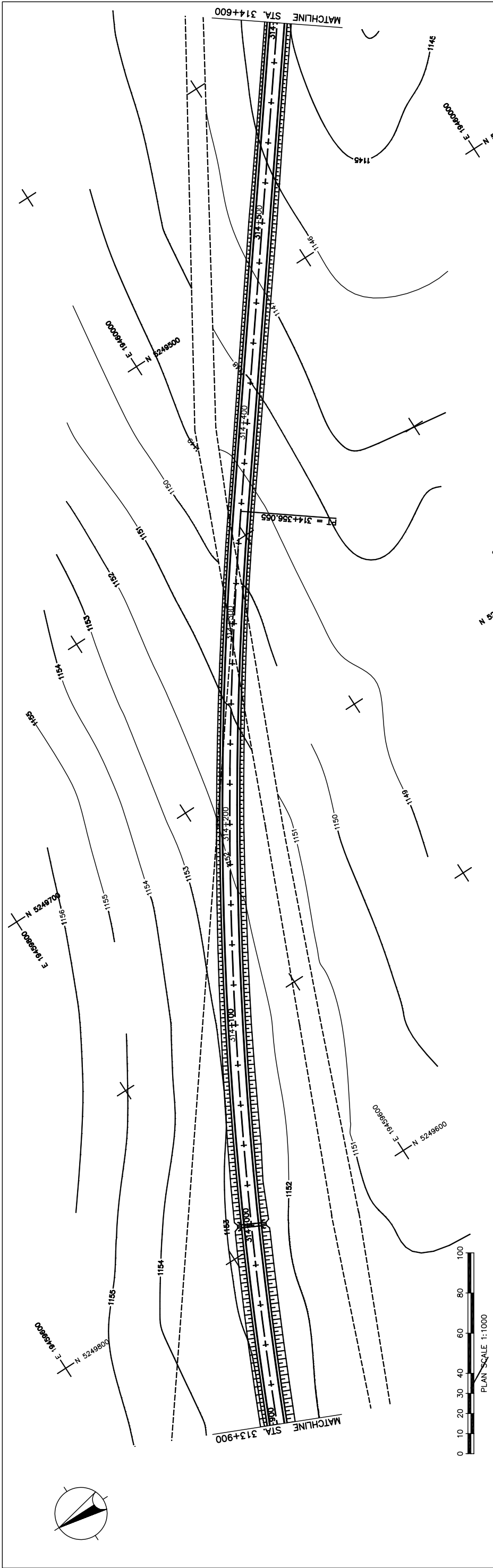
JAPAN OVERSEAS CONSULTANTS

DEPARTMENT OF ROADS,

MINISTRY OF INFRASTRUCTURE,

THE GOVERNMENT OF MONGOLIA

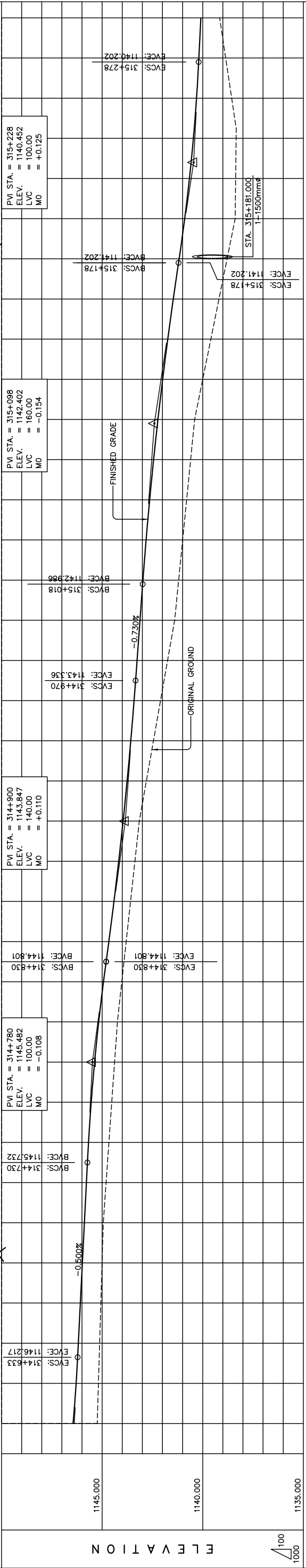
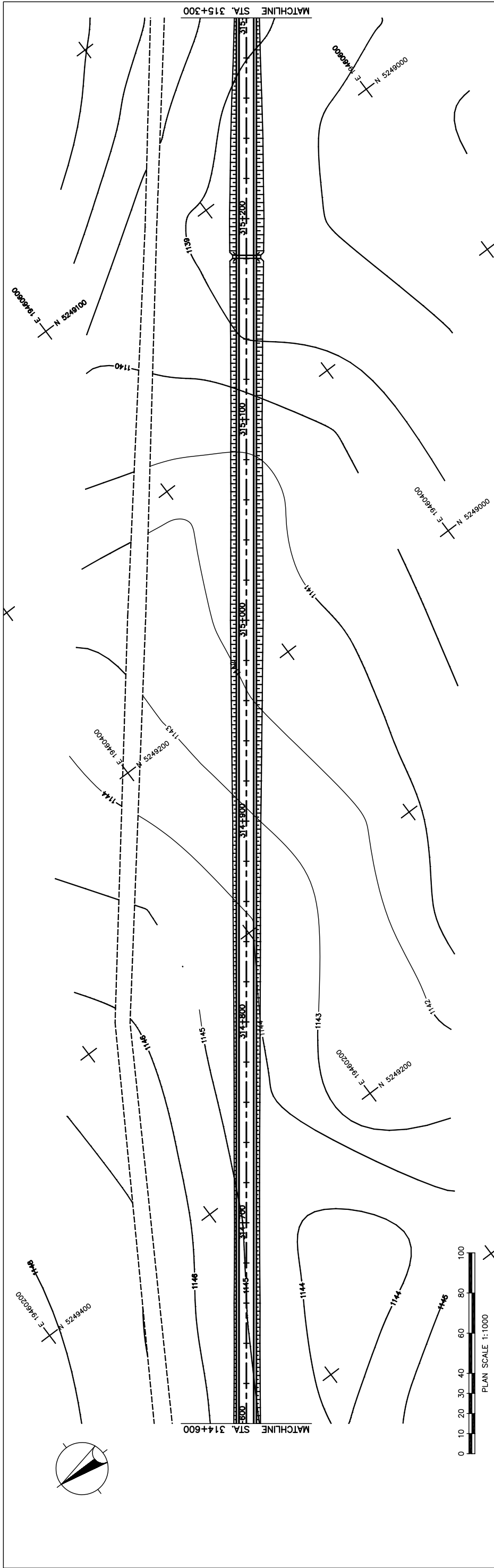
図 3-2-3-68 全体平面・縦断面 (Section VI Sta.313+200-Sta.313+900)



STATION	FINISHED GRADE	ORIGINAL GROUND	HORIZONTAL CURVATURE	VERTICAL CURVATURE	SUPERELEVATION
313+900	1152.689	1155.199			
	1152.671	1155.217			
	1152.652	1155.212			
	1152.634	1155.182			
	1152.615	1155.129			
	1152.597	1155.052			
	1152.588	1154.952			
	1152.579	1154.827			
	1152.570	1154.679			
	1152.561	1154.507			
	1152.552	1154.311			
	1152.385	1154.091			
	1152.218	1153.847			
	1152.052	1153.580			
	1151.885	1153.289			
	1151.718	1152.974			
	1151.441	1152.638			
	1151.163	1152.298			
	1150.886	1151.958			
	1150.608	1151.618			
	1150.331	1151.278			
	1149.977	1150.938			
	1149.258	1150.258			
	1148.846	1149.918			
	1148.435	1149.578			
	1148.037	1149.238			
	1147.639	1148.898			
	1147.240	1148.558			
	1146.842	1148.218			
	1146.444	1147.878			
	1146.204	1147.538			
	1145.964	1147.200			
	1145.724	1146.901			
	1145.484	1146.650			
	1145.244	1146.447			

THE BASIC DESIGN STUDY ON CONSTRUCTION OF EASTERN ARTERIAL ROAD IN MONGOLIA  
 DEPARTMENT OF ROADS,  
 MINISTRY OF INFRASTRUCTURE,  
 THE GOVERNMENT OF MONGOLIA  
 JAPAN INTERNATIONAL COOPERATION AGENCY (JICA)  
 PACIFIC CONSULTANTS INTERNATIONAL  
 JAPAN OVERSEAS CONSULTANTS  
 Drawing title  
**PLAN AND PROFILE**  
**STA. 313+900 - STA. 314+600**  
 (SECTION-6)  
 Scale  
 AS SHOWN  
 Sheet No.  
 C-19  
 19/41

図 3-2-3-69 全体平面・縦断面 (Section VI Sta.313+900-Sta.314+600)



STATION	FINISHED GRADE	ORIGINAL GROUND	HORIZONTAL CURVATURE	VERTICAL CURVATURE	SUPERELEVATION
314+600	1145.244	1146.447			
	1145.184	1146.292			
	1145.124	1146.182			
	1145.063	1146.082			
	1145.003	1145.982			
	1144.943	1145.882			
	1144.882	1145.782			
	1144.822	1145.672			
	1144.762	1145.572			
	1144.702	1145.472			
	1144.642	1145.372			
	1144.582	1145.272			
	1144.522	1145.172			
	1144.462	1145.072			
	1144.402	1144.972			
	1144.342	1144.872			
	1144.282	1144.772			
	1144.222	1144.672			
	1144.162	1144.572			
	1144.102	1144.472			
	1144.042	1144.372			
	1143.982	1144.272			
	1143.922	1144.172			
	1143.862	1144.072			
	1143.802	1143.972			
	1143.742	1143.872			
	1143.682	1143.772			
	1143.622	1143.672			
	1143.562	1143.572			
	1143.502	1143.472			
	1143.442	1143.372			
	1143.382	1143.272			
	1143.322	1143.172			
	1143.262	1143.072			
	1143.202	1142.972			
	1143.142	1142.872			
	1143.082	1142.772			
	1143.022	1142.672			
	1142.962	1142.572			
	1142.902	1142.472			
	1142.842	1142.372			
	1142.782	1142.272			
	1142.722	1142.172			
	1142.662	1142.072			
	1142.602	1141.972			
	1142.542	1141.872			
	1142.482	1141.772			
	1142.422	1141.672			
	1142.362	1141.572			
	1142.302	1141.472			
	1142.242	1141.372			
	1142.182	1141.272			
	1142.122	1141.172			
	1142.062	1141.072			
	1142.002	1140.972			
	1141.942	1140.872			
	1141.882	1140.772			
	1141.822	1140.672			
	1141.762	1140.572			
	1141.702	1140.472			
	1141.642	1140.372			
	1141.582	1140.272			
	1141.522	1140.172			
	1141.462	1140.072			
	1141.402	1139.972			
	1141.342	1139.872			
	1141.282	1139.772			
	1141.222	1139.672			
	1141.162	1139.572			
	1141.102	1139.472			
	1141.042	1139.372			
	1140.982	1139.272			
	1140.922	1139.172			
	1140.862	1139.072			
	1140.802	1138.972			
	1140.742	1138.872			
	1140.682	1138.772			
	1140.622	1138.672			
	1140.562	1138.572			
	1140.502	1138.472			
	1140.442	1138.372			
	1140.382	1138.272			
	1140.322	1138.172			
	1140.262	1138.072			
	1140.202	1137.972			
	1140.142	1137.872			
	1140.082	1137.772			
	1140.022	1137.672			
	1139.962	1137.572			
	1139.902	1137.472			
	1139.842	1137.372			
	1139.782	1137.272			
	1139.722	1137.172			
	1139.662	1137.072			
	1139.602	1136.972			
	1139.542	1136.872			
	1139.482	1136.772			
	1139.422	1136.672			
	1139.362	1136.572			
	1139.302	1136.472			
	1139.242	1136.372			
	1139.182	1136.272			
	1139.122	1136.172			
	1139.062	1136.072			
	1139.002	1135.972			
	1138.942	1135.872			
	1138.882	1135.772			
	1138.822	1135.672			
	1138.762	1135.572			
	1138.702	1135.472			
	1138.642	1135.372			
	1138.582	1135.272			
	1138.522	1135.172			
	1138.462	1135.072			
	1138.402	1134.972			
	1138.342	1134.872			
	1138.282	1134.772			
	1138.222	1134.672			
	1138.162	1134.572			
	1138.102	1134.472			
	1138.042	1134.372			
	1137.982	1134.272			
	1137.922	1134.172			
	1137.862	1134.072			
	1137.802	1133.972			
	1137.742	1133.872			
	1137.682	1133.772			
	1137.622	1133.672			
	1137.562	1133.572			
	1137.502	1133.472			
	1137.442	1133.372			
	1137.382	1133.272			
	1137.322	1133.172			
	1137.262	1133.072			
	1137.202	1132.972			
	1137.142	1132.872			
	1137.082	1132.772			
	1137.022	1132.672			
	1136.962	1132.572			
	1136.902	1132.472			
	1136.842	1132.372			
	1136.782	1132.272			
	1136.722	1132.172			
	1136.662	1132.072			
	1136.602	1131.972			
	1136.542	1131.872			
	1136.482	1131.772			
	1136.422	1131.672			
	1136.362	1131.572			
	1136.302	1131.472			
	1136.242	1131.372			
	1136.182	1131.272			
	1136.122	1131.172			
	1136.062	1131.072			
	1136.002	1130.972			
	1135.942	1130.872			
	1135.882	1130.772			
	1135.822	1130.672			
	1135.762	1130.572			
	1135.702	1130.472			
	1135.642	1130.372			
	1135.582	1130.272			
	1135.522	1130.172			
	1135.462	1130.072			
	1135.402	1129.972			
	1135.342	1129.872			
	1135.282	1129.772			
	1135.222	1129.672			
	1135.162	1129.572			
	1135.102	1129.472			
	1135.042	1129.372			
	1134.982	1129.272			
	1134.922	1129.172			
	1134.862	1129.072			
	1134.802	1128.972			
	1134.742	1128.872			
	1134.682	1128.772			
	1134.622	1128.672			
	1134.562	1128.572			
	1134.502	1128.472			
	1134.442	1128.372			
	1134.382	1128.272			
	1134.322	1128.172			
	1134.262	1128.072			
	1134.202	1127.972			
	1134.142	1127.872			
	1134.082	1127.772			
	1134.022	1127.672			
	1133.962	1127.572			
	1133.902	1127.472			
	1133.842	1127.372			
	1133.782	1127.272			
	1133.722	1127.172			
	1133.662	1127.072			
	1133.602	1126.972			
	1133.542	1126.872			
	1133.482	1126.772			
	1133.422	1126.672			
	1133.362	1126.572			
	1133.302	1126.472			
	1133.242	1126.372			
	1133.182	1126.272			
	1133.122	1126.172			
	1133.062	1126.072			
	1133.002	1125.972			

THE BASIC DESIGN STUDY ON CONSTRUCTION OF EASTERN ARTERIAL ROAD IN MONGOLIA

JAPAN INTERNATIONAL COOPERATION AGENCY (JICA)  
 DEPARTMENT OF ROADS,  
 MINISTRY OF INFRASTRUCTURE,  
 THE GOVERNMENT OF MONGOLIA

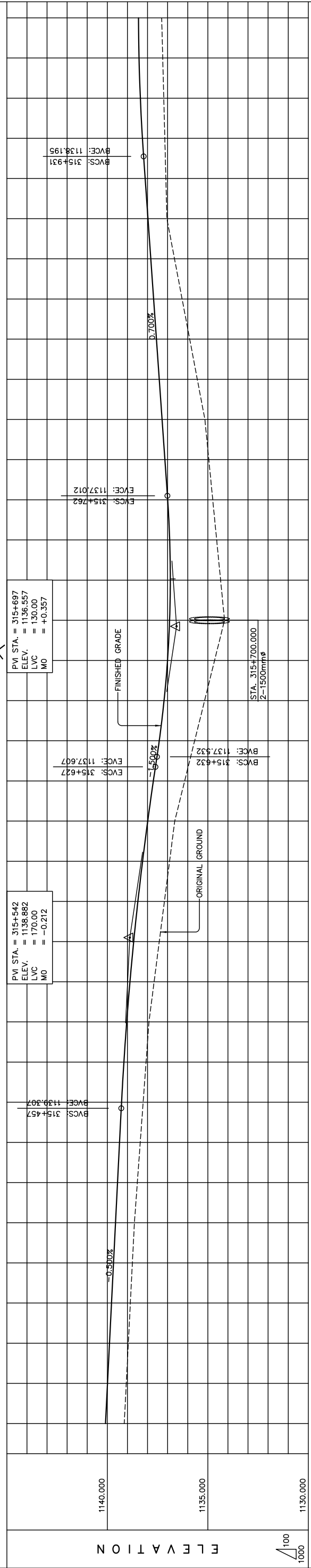
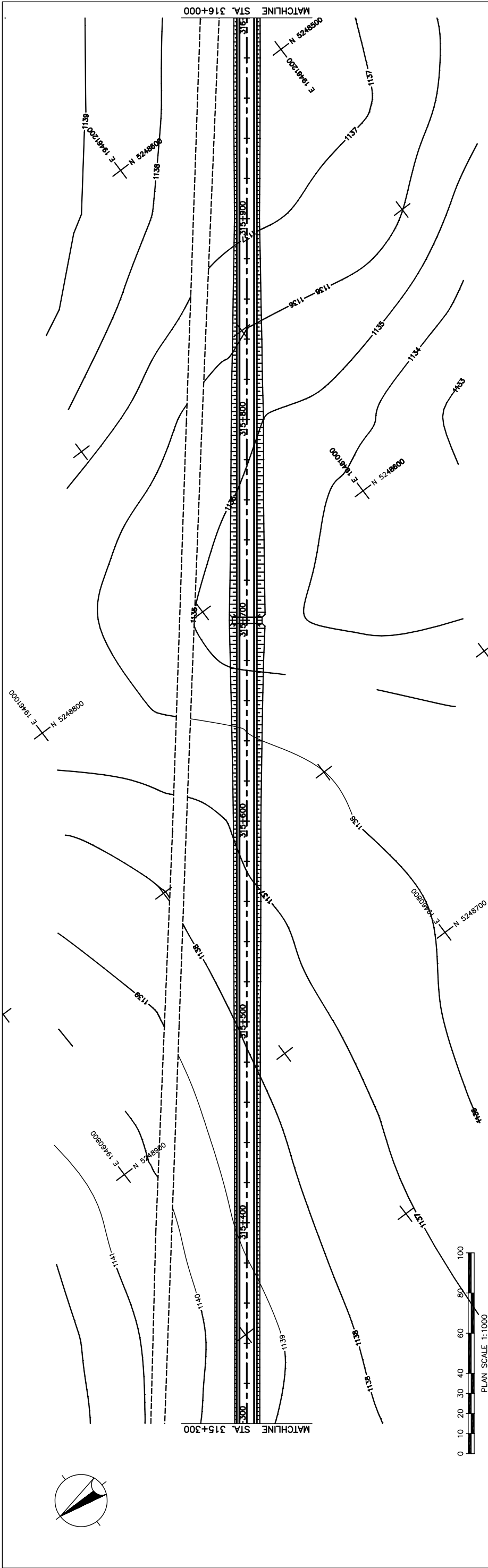
PACIFIC CONSULTANTS INTERNATIONAL  
 JAPAN OVERSEAS CONSULTANTS

Drawing title  
**PLAN AND PROFILE**  
 STA. 314+600 - STA. 315+300  
 (SECTION-6)

Scale  
 AS SHOWN

Sheet No.  
 C-20  
 20/41

図 3-2-3-70 全体平面・縦断面図 (Section VI Sta.314+600-Sta.315+300)



STATION	FINISHED GRADE	ORIGINAL GROUND	HORIZONTAL CURVATURE	VERTICAL CURVATURE	SUPERELEVATION
315+000	1139.092	1139.992			
315+020	1139.992	1139.992			
315+040	1139.992	1139.992			
315+060	1139.992	1139.992			
315+080	1139.992	1139.992			
315+100	1139.992	1139.992			
315+120	1139.992	1139.992			
315+140	1139.992	1139.992			
315+160	1139.992	1139.992			
315+180	1139.992	1139.992			
315+200	1139.992	1139.992			
315+220	1139.992	1139.992			
315+240	1139.992	1139.992			
315+260	1139.992	1139.992			
315+280	1139.992	1139.992			
315+300	1139.992	1139.992			
315+320	1139.992	1139.992			
315+340	1139.992	1139.992			
315+360	1139.992	1139.992			
315+380	1139.992	1139.992			
315+400	1139.992	1139.992			
315+420	1139.992	1139.992			
315+440	1139.992	1139.992			
315+460	1139.992	1139.992			
315+480	1139.992	1139.992			
315+500	1139.992	1139.992			
315+520	1139.992	1139.992			
315+540	1139.992	1139.992			
315+560	1139.992	1139.992			
315+580	1139.992	1139.992			
315+600	1139.992	1139.992			
315+620	1139.992	1139.992			
315+640	1139.992	1139.992			
315+660	1139.992	1139.992			
315+680	1139.992	1139.992			
315+700	1139.992	1139.992			
315+720	1139.992	1139.992			
315+740	1139.992	1139.992			
315+760	1139.992	1139.992			
315+780	1139.992	1139.992			
315+800	1139.992	1139.992			
315+820	1139.992	1139.992			
315+840	1139.992	1139.992			
315+860	1139.992	1139.992			
315+880	1139.992	1139.992			
315+900	1139.992	1139.992			
315+920	1139.992	1139.992			
315+940	1139.992	1139.992			
315+960	1139.992	1139.992			
315+980	1139.992	1139.992			
316+000	1139.992	1139.992			

THE BASIC DESIGN STUDY ON CONSTRUCTION OF EASTERN ARTERIAL ROAD IN MONGOLIA

JAPAN INTERNATIONAL COOPERATION AGENCY (JICA)  
 DEPARTMENT OF ROADS,  
 MINISTRY OF INFRASTRUCTURE,  
 THE GOVERNMENT OF MONGOLIA

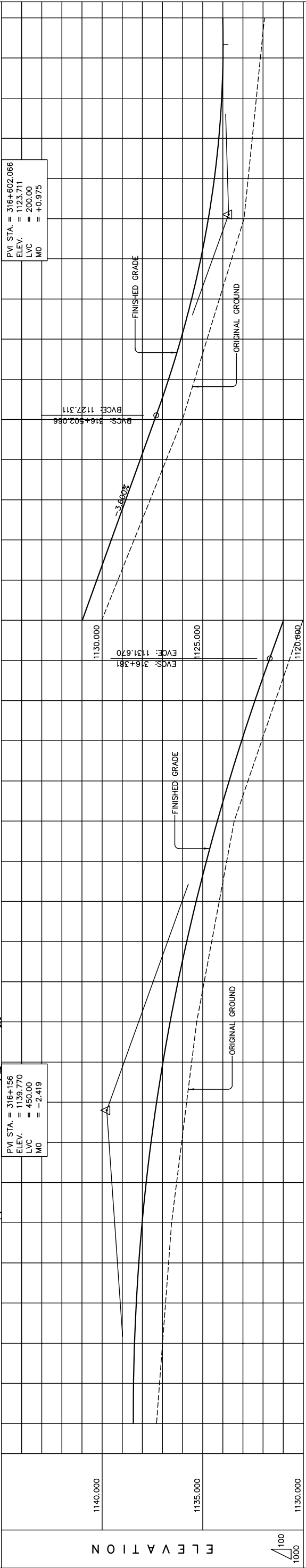
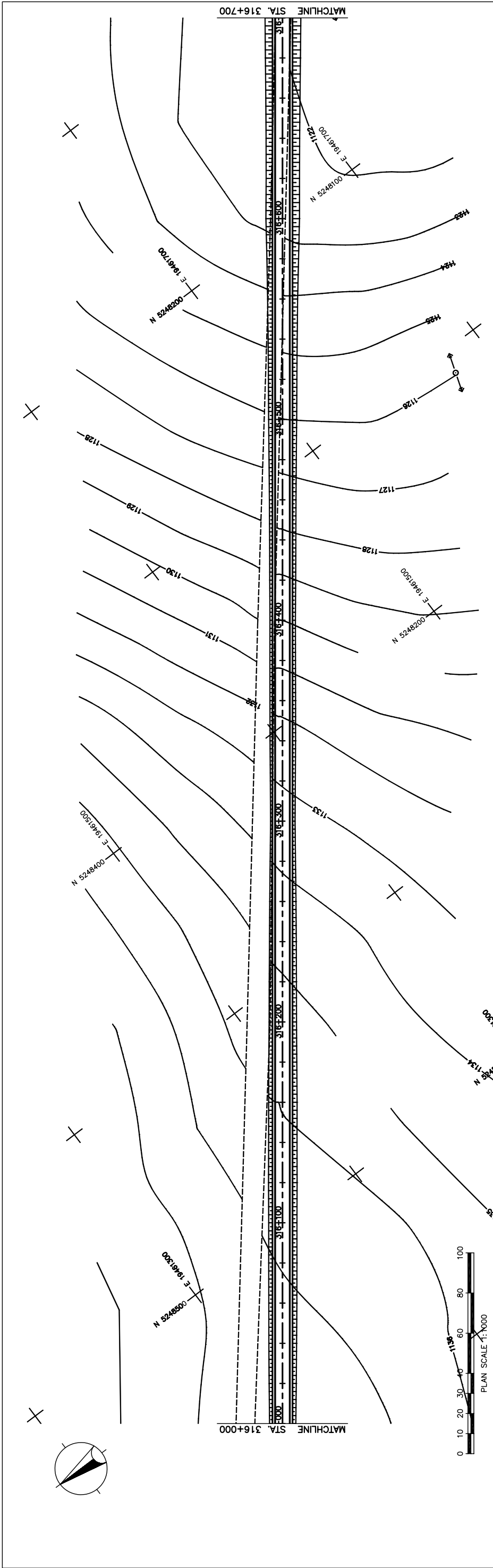
PACIFIC CONSULTANTS INTERNATIONAL  
 JAPAN OVERSEAS CONSULTANTS

Drawing title  
 PLAN AND PROFILE  
 STA. 315+300 - STA. 316+000  
 (SECTION-6)

Scale  
 AS SHOWN

Sheet No.  
 C-21  
 21/41

3-2-3-71 全体平面・縦断面 (Section VI Sta.315+300-Sta.316+000)



STATION	FINISHED GRADE	ORIGINAL GROUND	HORIZONTAL CURVATURE	VERTICAL CURVATURE	SUPERELEVATION
316+000	1137.296	1138.450			
	1137.146	1138.439			
	1136.947	1138.013			
	1136.697	1138.177			
	1136.847	1138.302			
	1136.996	1138.390			
	1137.146	1138.439			
	1136.947	1138.547			
	1136.297	1137.811			
	1136.048	1137.571			
	1135.798	1137.292			
	1135.549	1136.975			
	1135.299	1136.620			
	1134.926	1136.227			
	1134.553	1135.796			
	1134.181	1135.326			
	1133.808	1134.818			
	1133.435	1134.272			
	1132.752	1133.688			
	1132.069	1133.065			
	1131.386	1132.404			
	1130.703	1131.705			
	1130.020	1130.986			
	1129.218	1130.266			
	1128.415	1129.546			
	1127.613	1128.826			
	1126.810	1128.106			
	1126.008	1127.386			
	1125.396	1126.697			
	1124.784	1126.086			
	1124.171	1125.553			
	1123.559	1125.098			
	1122.947	1124.721			
	1122.743	1124.422			
	1122.540	1124.201			
	1122.336	1124.058			
	1122.133	1123.993			
	1121.929	1124.006			

THE BASIC DESIGN STUDY ON CONSTRUCTION OF EASTERN ARTERIAL ROAD IN MONGOLIA

JAPAN INTERNATIONAL COOPERATION AGENCY (JICA)  
 DEPARTMENT OF ROADS,  
 MINISTRY OF INFRASTRUCTURE,  
 THE GOVERNMENT OF MONGOLIA

PACIFIC CONSULTANTS INTERNATIONAL  
 JAPAN OVERSEAS CONSULTANTS

Drawing title  
**PLAN AND PROFILE**  
 STA. 316+000 - STA. 316+700  
 (SECTION-6)

Scale  
 AS SHOWN

Sheet No.  
 C-22  
 (2/4)

STRAIGHT  
 g = -3.600%  
 LVC = 200.00 m

LVC = 450.00 m

図 3-2-3-72 全体平面・縦断面 (Section VI Sta.316+000-Sta.316+700)

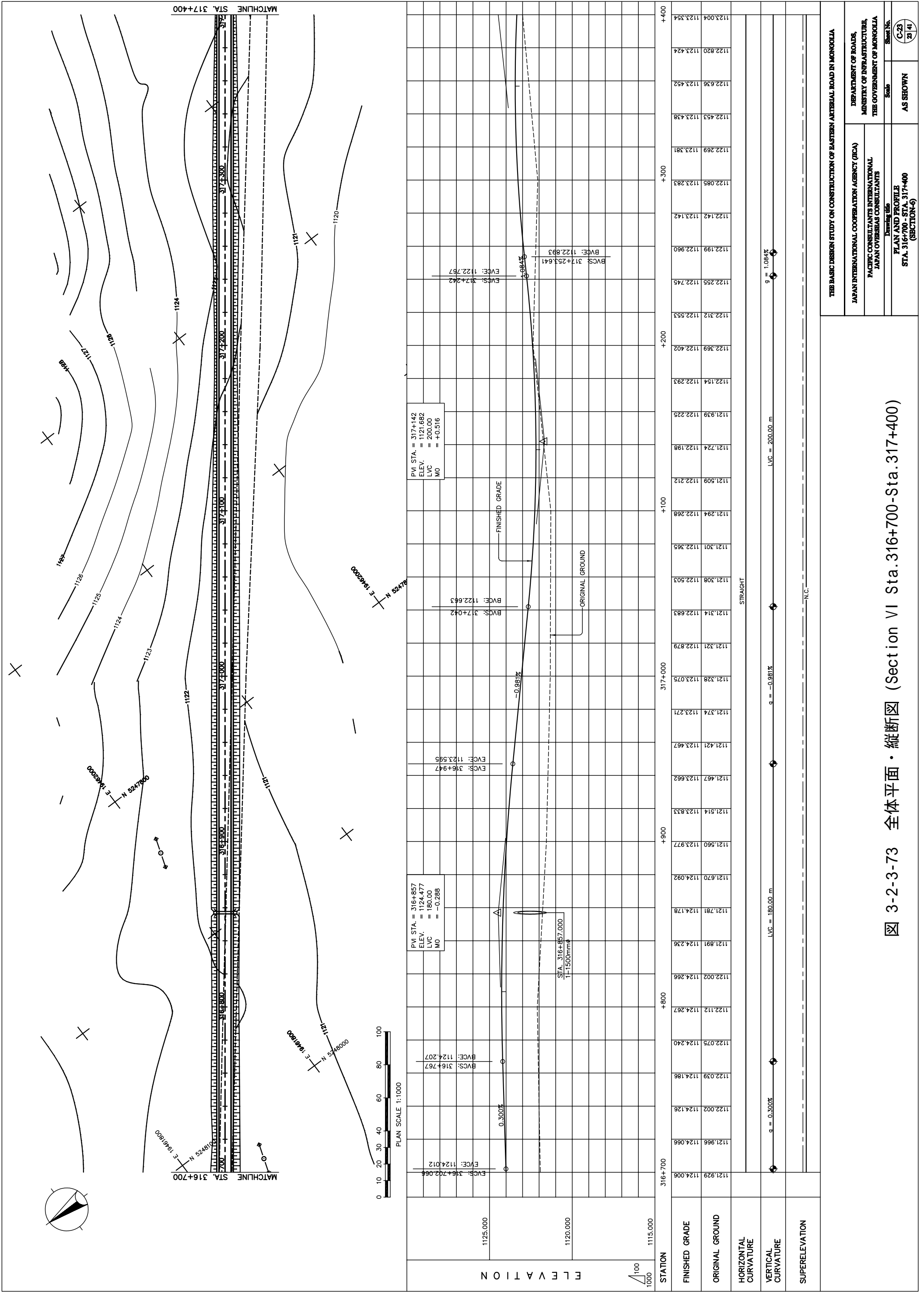


図 3-2-3-73 全体平面・縦断面図 (Section VI Sta. 316+700-Sta. 317+400)

THE BASIC DESIGN STUDY ON CONSTRUCTION OF EASTERN ARTERIAL ROAD IN MONGOLIA

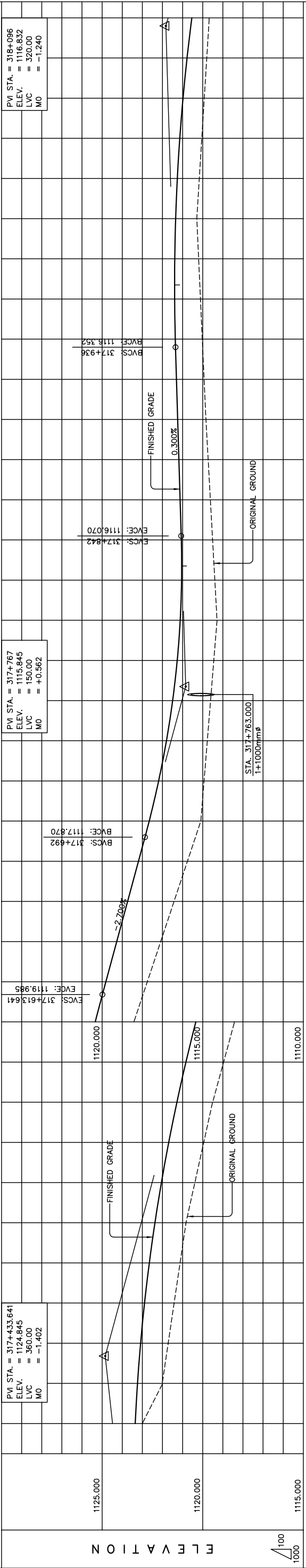
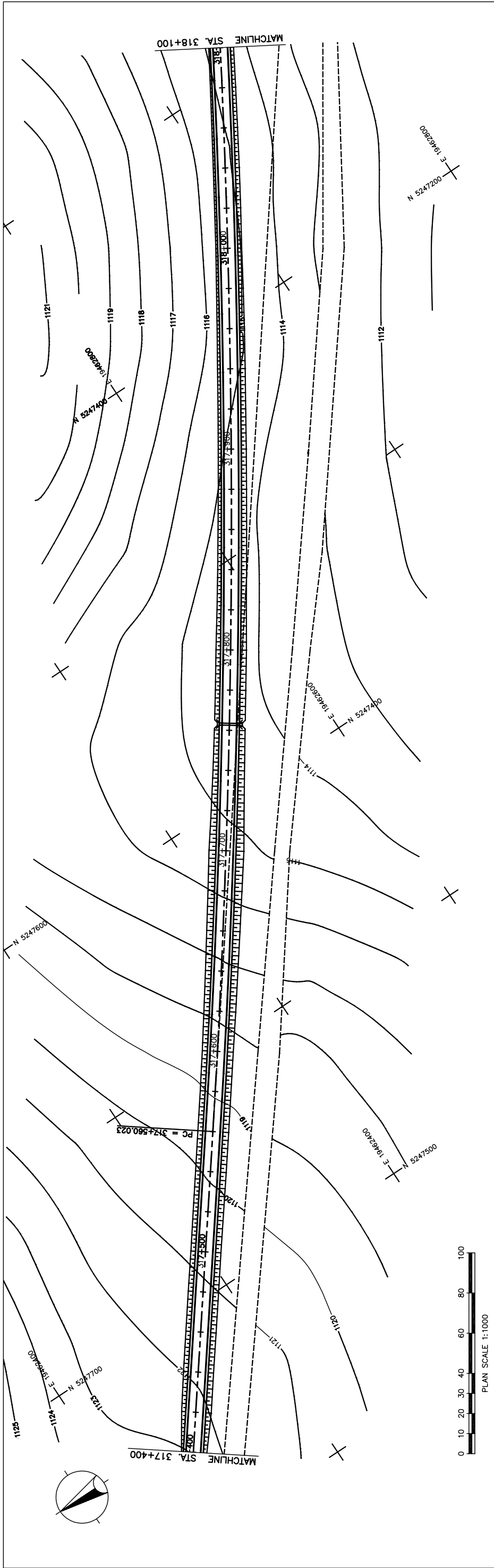
JAPAN INTERNATIONAL COOPERATION AGENCY (JICA)  
 DEPARTMENT OF ROADS,  
 MINISTRY OF INFRASTRUCTURE,  
 THE GOVERNMENT OF MONGOLIA

PACIFIC CONSULTANTS INTERNATIONAL  
 JAPAN OVERSEAS CONSULTANTS

Drawing title  
 PLAN AND PROFILE  
 STA. 316+700 - STA. 317+400  
 (SECTION-6)

Scale  
 AS SHOWN

Sheet No.  
 C-23  
 29 / 41



STATION	317+400	+500	+600	+700	+800	+900	318+000	+100
FINISHED GRADE	1123.354	1123.354	1121.266	1119.814	1117.754	1114.934	1114.509	1114.675
ORIGINAL GROUND	1123.243	1121.282	1118.419	1115.760	1114.611	1114.730	1115.203	1115.779
HORIZONTAL CURVATURE	STRAIGHT							
VERTICAL CURVATURE	LVC = 360.00 m							
SUPERELEVATION	N.C.							

PVI STA. = 317+433.641  
 ELEV. = 1124.845  
 LVC = 360.00  
 MO = -1.402

PVI STA. = 317+767  
 ELEV. = 1115.845  
 LVC = 150.00  
 MO = +0.562

PVI STA. = 318+096  
 ELEV. = 1116.832  
 LVC = 320.00  
 MO = -1.240

3-130

図 3-2-3-74 全体平面・縦断面図 (Section VI Sta.317+400-Sta.318+100)

THE BASIC DESIGN STUDY ON CONSTRUCTION OF EASTERN ARTERIAL ROAD IN MONGOLIA  
 JAPAN INTERNATIONAL COOPERATION AGENCY (JICA)  
 DEPARTMENT OF ROADS,  
 MINISTRY OF INFRASTRUCTURE,  
 THE GOVERNMENT OF MONGOLIA  
 PACIFIC CONSULTANTS INTERNATIONAL  
 JAPAN OVERSEAS CONSULTANTS  
 Drawing title  
 PLAN AND PROFILE  
 STA. 317+400 - STA. 318+100  
 (SECTION-6)  
 Scale  
 AS SHOWN  
 Sheet No.  
 C-24  
 24/41