

STATION	307+600	+700	+800	+900	308+000	+100	+200	+300	
FINISHED GRADE	1119.552	1120.823	1121.771	1121.003	1119.989	1121.183	1120.208	1121.563	
ORIGINAL GROUND	1120.426	1121.543	1120.645	1121.723	1120.809	1121.903	1120.973	1122.083	
HORIZONTAL CURVATURE	STRAIGHT								
VERTICAL CURVATURE	g = 0.300%								
SUPERELEVATION	N.C.								
	1119.771	1121.003	1121.916	1122.983	1122.141	1123.163	1122.967	1123.343	
	1120.208	1121.563	1121.465	1122.623	1122.882	1123.883	1123.028	1124.063	
	1119.989	1121.183	1121.916	1122.983	1122.737	1123.703	1123.173	1124.243	
	1119.771	1121.003	1121.916	1122.983	1123.318	1124.423	1123.477	1124.603	
	1120.426	1121.543	1121.465	1122.623	1123.636	1124.783	1123.795	1124.963	
	1119.989	1121.183	1121.916	1122.983	1123.795	1124.963	1123.954	1125.143	
	1119.771	1121.003	1121.916	1122.983	1124.113	1125.323	1124.739	1126.043	
	1120.426	1121.543	1121.465	1122.623	1124.270	1125.503	1124.426	1126.683	
	1119.989	1121.183	1121.916	1122.983	1124.583	1125.863	1124.896	1126.223	
	1119.771	1121.003	1121.916	1122.983	1124.831	1126.403	1124.831	1126.403	
	1120.426	1121.543	1121.465	1122.623	1124.766	1126.583	1124.766	1126.583	
	1119.989	1121.183	1121.916	1122.983	1124.637	1126.879	1124.637	1126.879	
	1119.771	1121.003	1121.916	1122.983	1124.572	1126.964	1124.572	1126.964	

THE BASIC DESIGN STUDY ON CONSTRUCTION OF EASTERN ARTERIAL ROAD IN MONGOLIA

JAPAN INTERNATIONAL COOPERATION AGENCY (JICA)
 DEPARTMENT OF ROADS,
 MINISTRY OF INFRASTRUCTURE,
 THE GOVERNMENT OF MONGOLIA

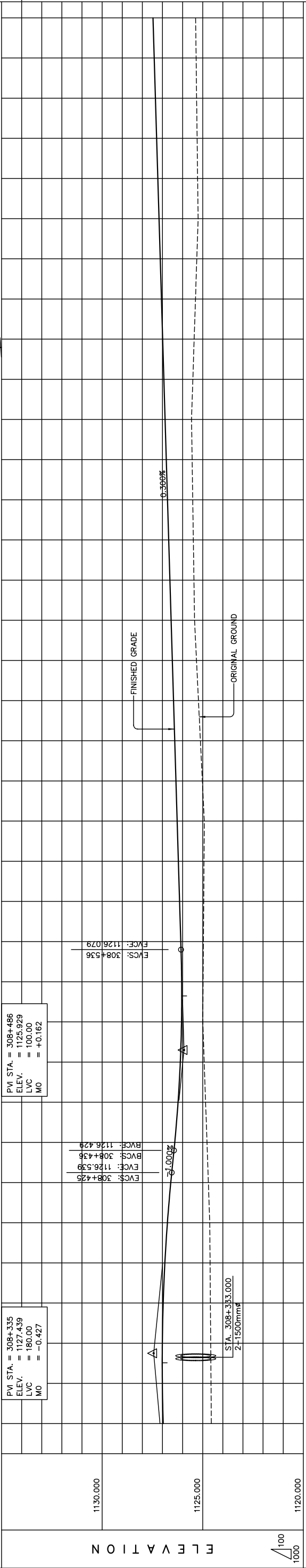
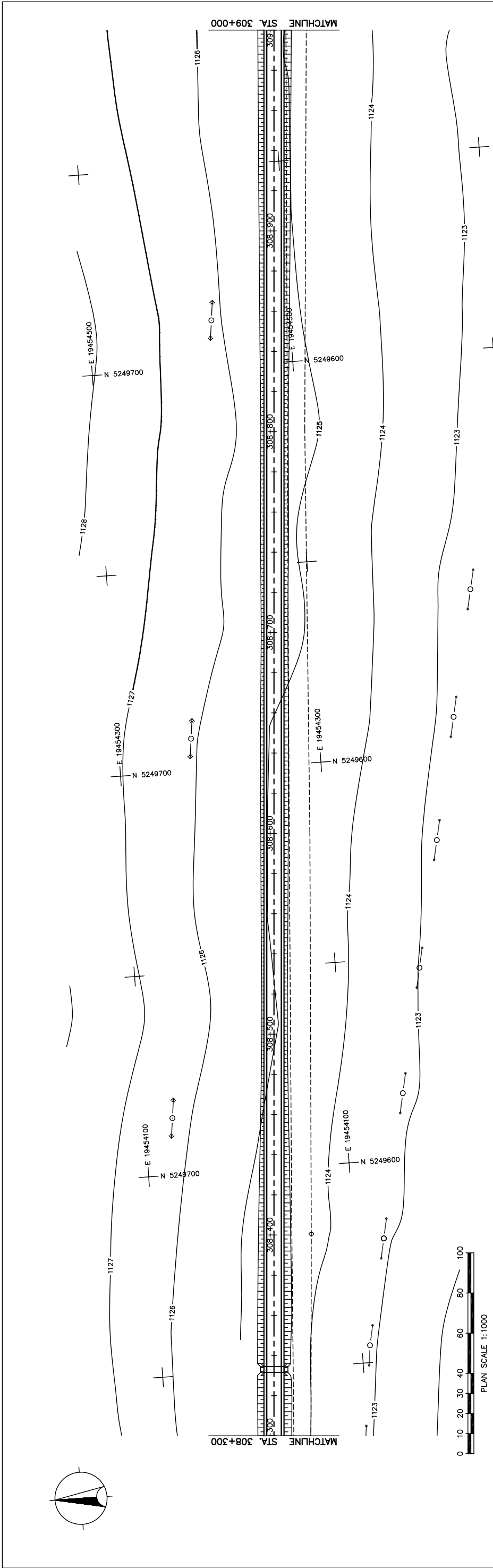
PACIFIC CONSULTANTS INTERNATIONAL
 JAPAN OVERSEAS CONSULTANTS

Drawing title
PLAN AND PROFILE
 STA. 307+600 - STA. 308+300
 (SECTION-6)

Scale
 AS SHOWN

Sheet No.
 C-10
 10/41

図 3-2-3-60 全体平面・縦断面 (Section VI Sta.307+600-Sta.308+300)



STATION	308+300	+400	+500	+600	+700	+800	+900	309+000
FINISHED GRADE	1124.572	1124.588	1124.603	1124.619	1124.634	1124.650	1124.670	1124.685
ORIGINAL GROUND	1124.594	1124.598	1124.607	1124.619	1124.634	1124.650	1124.670	1124.685
HORIZONTAL CURVATURE	STRAIGHT							
VERTICAL CURVATURE	$g = -1.000\%$							
SUPERELEVATION	N.C.							

THE BASIC DESIGN STUDY ON CONSTRUCTION OF EASTERN ARTERIAL ROAD IN MONGOLIA

JAPAN INTERNATIONAL COOPERATION AGENCY (JICA)
 PACIFIC CONSULTANTS INTERNATIONAL
 JAPAN OVERSEAS CONSULTANTS

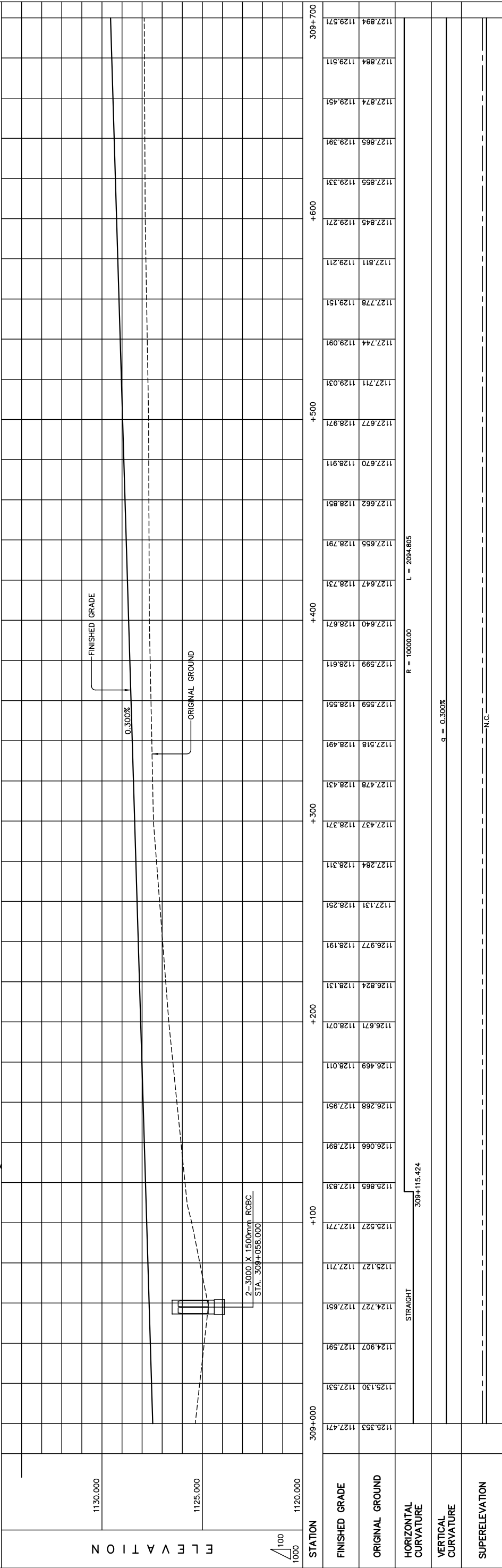
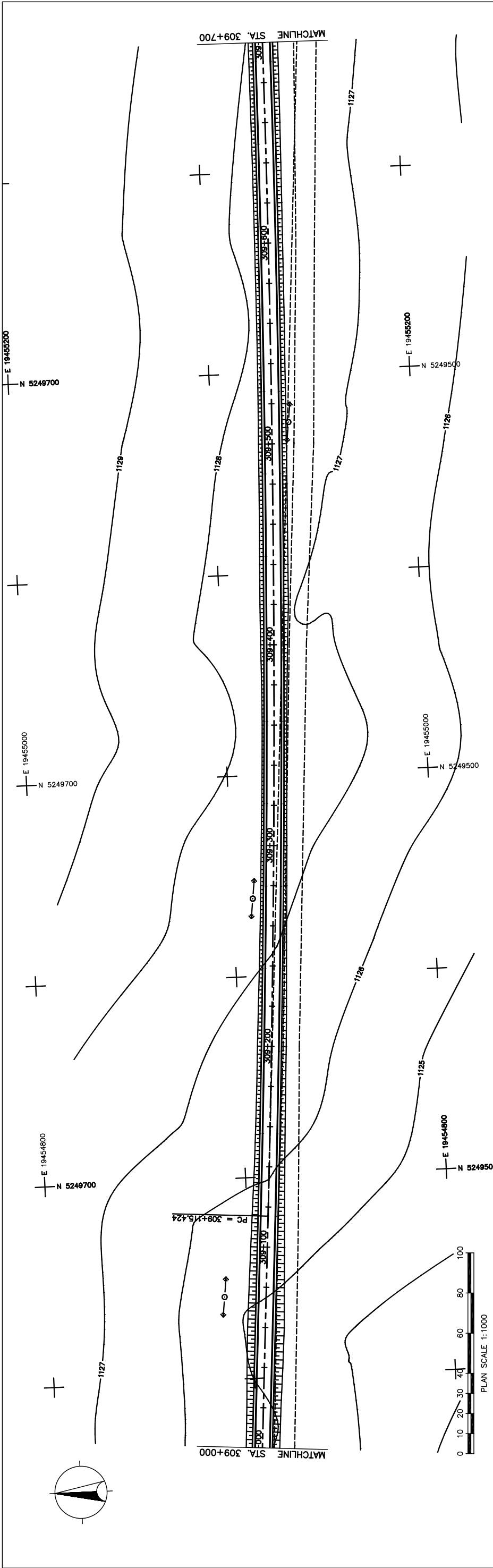
DEPARTMENT OF ROADS,
 MINISTRY OF INFRASTRUCTURE,
 THE GOVERNMENT OF MONGOLIA

Drawing title
 PLAN AND PROFILE
 STA. 308+300 - STA. 309+000
 (SECTION-6)

Scale
 AS SHOWN

Sheet No.
 C-11
 11/41

図 3-2-3-61 全体平面・縦断面 (Section VI Sta. 308+300-Sta. 309+000)



STATION	FINISHED GRADE	ORIGINAL GROUND	HORIZONTAL CURVATURE	VERTICAL CURVATURE	SUPERELEVATION
309+000	1125.553	1127.471			
	1125.130	1127.531			
	1124.907	1127.591			
	1124.727	1127.651			
	1125.127	1127.711			
	1125.527	1127.771			
	1125.965	1127.831			
	1126.066	1127.891			
	1126.268	1127.951			
	1126.469	1128.011			
	1126.671	1128.071			
	1126.824	1128.131			
	1126.977	1128.191			
	1127.131	1128.251			
	1127.284	1128.311			
	1127.437	1128.371			
	1127.478	1128.431			
	1127.518	1128.491			
	1127.559	1128.551			
	1127.599	1128.611			
	1127.640	1128.671			
	1127.647	1128.731			
	1127.655	1128.791			
	1127.662	1128.851			
	1127.670	1128.911			
	1127.677	1128.971			
	1127.711	1129.031			
	1127.744	1129.091			
	1127.778	1129.151			
	1127.811	1129.211			
	1127.845	1129.271			
	1127.856	1129.331			
	1127.874	1129.391			
	1127.884	1129.451			
	1127.894	1129.511			
	1127.894	1129.571			

図 3-2-3-62 全体平面・縦断面 (Section VI Sta. 309+000 - Sta. 309+700)

THE BASIC DESIGN STUDY ON CONSTRUCTION OF EASTERN ARTERIAL ROAD IN MONGOLIA

JAPAN INTERNATIONAL COOPERATION AGENCY (JICA)

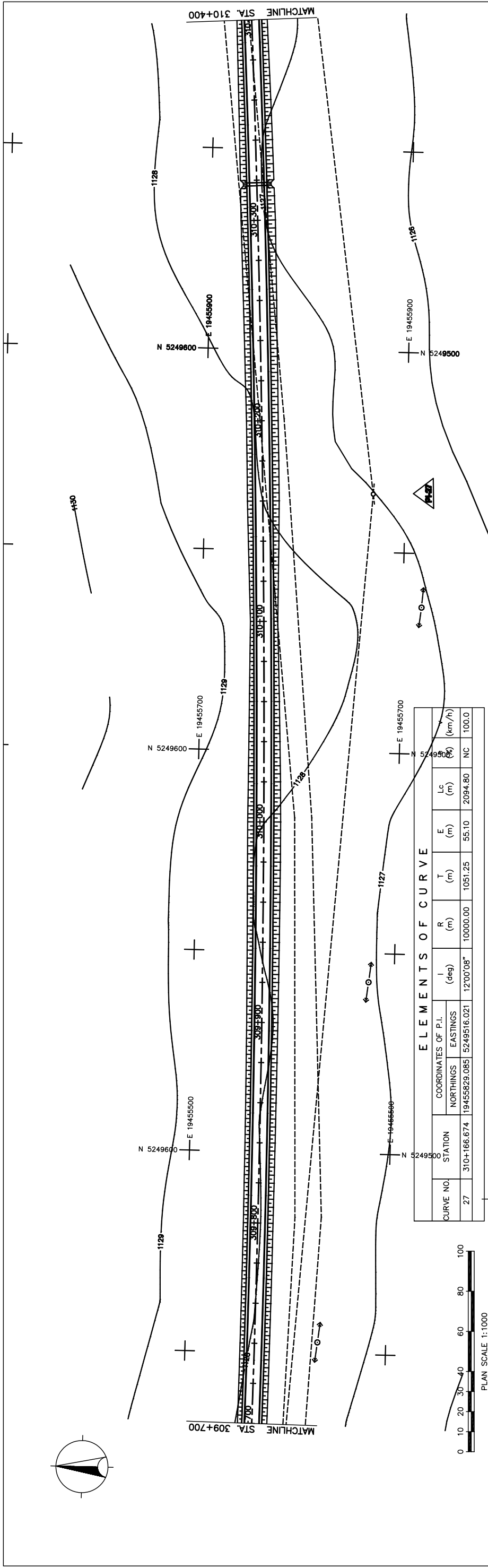
DEPARTMENT OF ROADS,
MINISTRY OF INFRASTRUCTURE,
THE GOVERNMENT OF MONGOLIA

PACIFIC CONSULTANTS INTERNATIONAL
JAPAN OVERSEAS CONSULTANTS

Drawing title
PLAN AND PROFILE
STA. 309+000 - STA. 309+700
(SECTION-6)

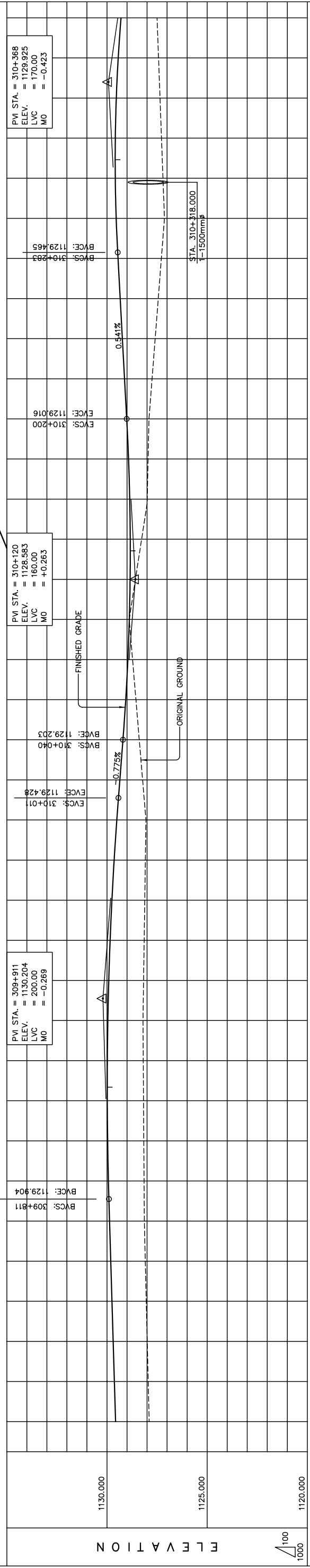
Scale
AS SHOWN

Sheet No.
C-12
12/41



ELEMENTS OF CURVE

CURVE NO.	STATION	COORDINATES OF P.I.		I (deg)	R (m)	T (m)	E (m)	Lc (m)	S (km/h)	NC	100.0
		NORTHINGS	EASTINGS								
27	310+166.674	19455829.085	5249516.021	12°00'08"	10000.00	1051.25	55.10	2094.80			



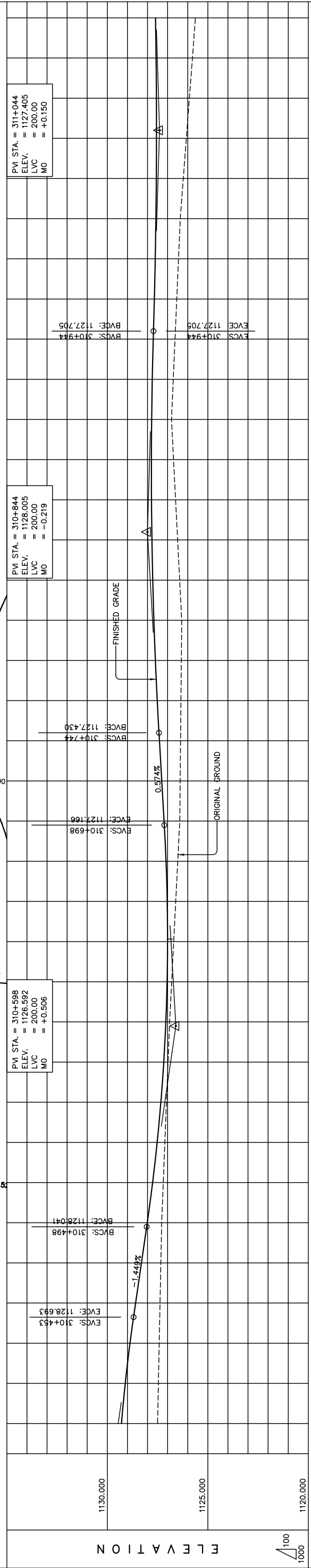
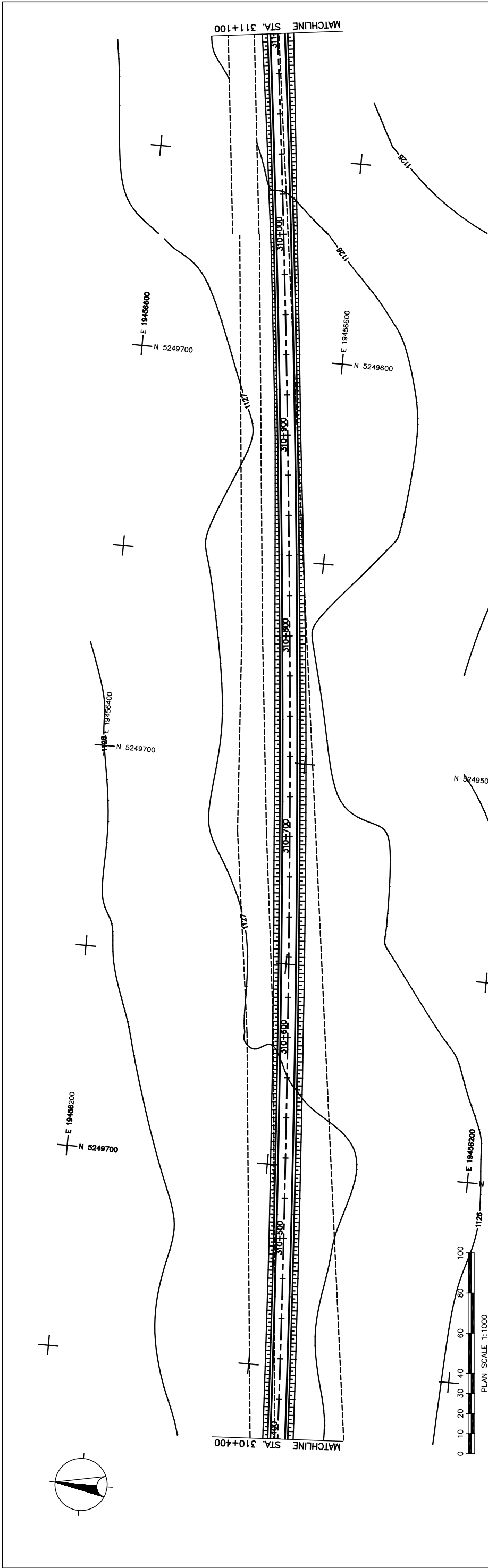
STATION	309+700	+800	+900	310+000	+100	+200	+300	+400
FINISHED GRADE	1127.894	1128.136	1128.173	1128.055	1128.890	1127.904	1127.132	1127.280
ORIGINAL GROUND	1127.942	1128.088	1128.144	1128.085	1128.723	1127.948	1127.206	1127.535
HORIZONTAL CURVATURE	1129.571	1129.871	1129.911	1129.510	1129.065	1129.016	1129.540	1129.585
VERTICAL CURVATURE	1129.631	1129.968	1129.958	1129.643	1129.358	1129.124	1129.233	1129.439
SUPERELEVATION	1129.571	1129.928	1129.911	1129.510	1129.203	1129.016	1129.449	1129.297

$R = 10000.00$ $L = 2094.805$
 $g_1 = -0.775\%$ $g_2 = 0.541\%$
 $LVC = 200.00 \text{ m}$ $LVC = 160.00 \text{ m}$ $LVC = 170.00 \text{ m}$

THE BASIC DESIGN STUDY ON CONSTRUCTION OF EASTERN ARTERIAL ROAD IN MONGOLIA

JAPAN INTERNATIONAL COOPERATION AGENCY (JICA) PACIFIC CONSULTANTS INTERNATIONAL JAPAN OVERSEAS CONSULTANTS	DEPARTMENT OF ROADS, MINISTRY OF INFRASTRUCTURE, THE GOVERNMENT OF MONGOLIA
Drawing title PLAN AND PROFILE STA. 309+700 - STA. 310+400 (SECTION-6)	
Scale	Sheet No.
AS SHOWN	C-13 13/41

図 3-2-3-63 全体平面・縦断面図 (Section VI Sta. 309+700-Sta. 310+400)



STATION	310+400	+500	+600	+700	+800	+900	311+000	+100
FINISHED GRADE	1127.501	1127.217	1127.296	1127.217	1127.217	1127.217	1127.217	1127.501
ORIGINAL GROUND	1129.297	1129.108	1128.872	1128.419	1128.592	1127.378	1128.592	1127.574
HORIZONTAL CURVATURE								
VERTICAL CURVATURE								
SUPERELEVATION								

THE BASIC DESIGN STUDY ON CONSTRUCTION OF EASTERN ARTERIAL ROAD IN MONGOLIA
 DEPARTMENT OF ROADS,
 MINISTRY OF INFRASTRUCTURE,
 THE GOVERNMENT OF MONGOLIA

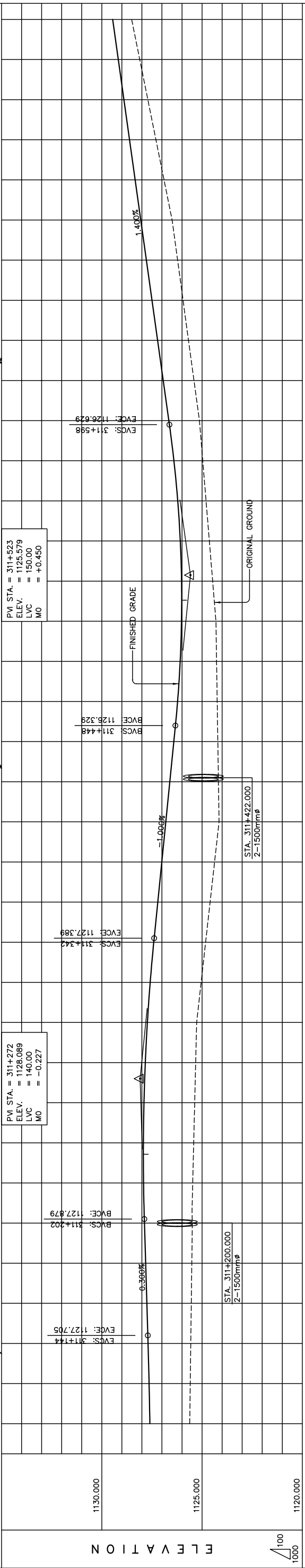
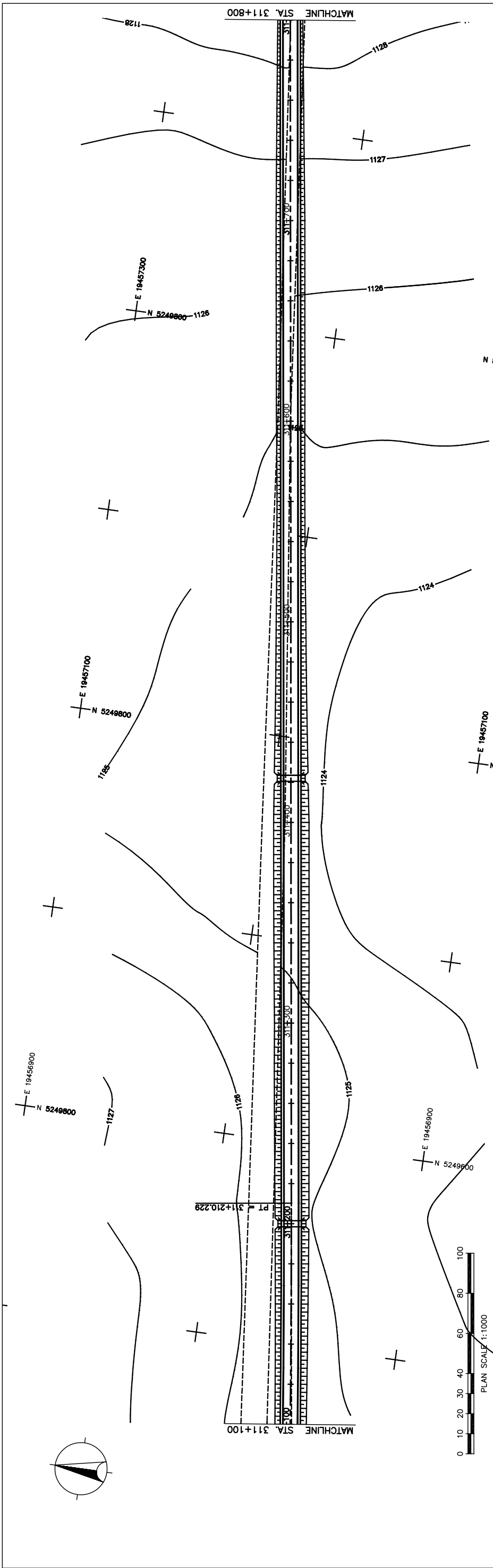
JAPAN INTERNATIONAL COOPERATION AGENCY (JICA)
 PACIFIC CONSULTANTS INTERNATIONAL
 JAPAN OVERSEAS CONSULTANTS

Drawing title
PLAN AND PROFILE
 STA. 310+400 - STA. 311+100
 (SECTION-6)

Scale
 AS SHOWN

Sheet No.
 C-14
 14/41

図 3-2-3-64 全体平面・縦断面 (Section VI Sta.310+400-Sta.311+100)



STATION	FINISHED GRADE	ORIGINAL GROUND	HORIZONTAL CURVATURE	VERTICAL CURVATURE	SUPERELEVATION
311+100	1125.615	1127.602			
	1125.589	1127.641			
	1125.563	1127.693			
	1125.537	1127.753			
	1125.511	1127.813			
	1125.485	1127.873			
	1125.466	1127.917			
	1125.417	1127.925			
	1125.367	1127.996			
	1125.318	1127.830			
	1125.269	1127.727			
	1125.246	1127.586			
	1124.822	1127.408			
	1124.599	1127.209			
	1124.375	1127.009			
	1124.152	1126.809			
	1124.183	1126.609			
	1124.214	1126.409			
	1124.245	1126.220			
	1124.276	1126.090			
	1124.307	1126.025			
	1124.472	1126.023			
	1124.636	1126.086			
	1124.801	1126.212			
	1124.965	1126.402			
	1125.130	1126.656			
	1125.403	1126.936			
	1125.675	1127.216			
	1125.948	1127.496			
	1126.220	1127.776			
	1126.493	1128.056			
	1126.897	1128.336			
	1127.300	1128.616			
	1127.704	1128.896			
	1128.107	1129.176			
	1128.511	1129.456			

THE BASIC DESIGN STUDY ON CONSTRUCTION OF EASTERN ARTERIAL ROAD IN MONGOLIA

JAPAN INTERNATIONAL COOPERATION AGENCY (JICA)
 DEPARTMENT OF ROADS,
 MINISTRY OF INFRASTRUCTURE,
 THE GOVERNMENT OF MONGOLIA

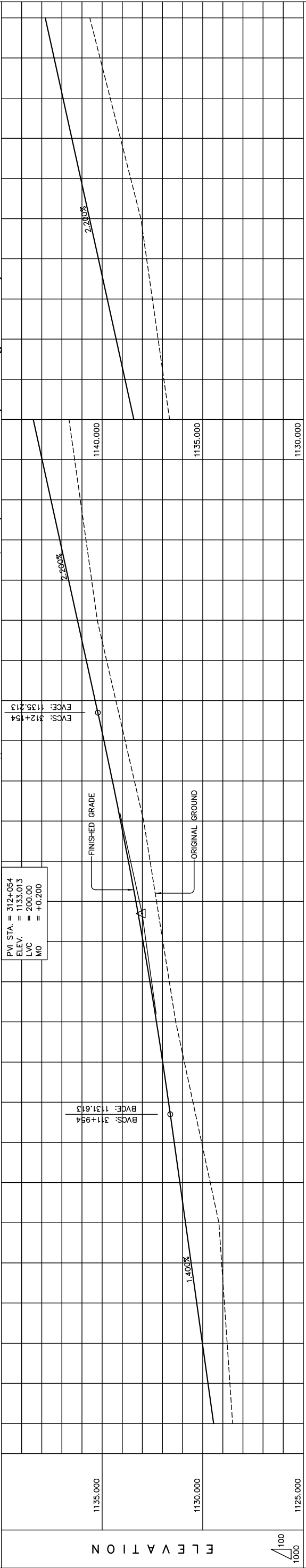
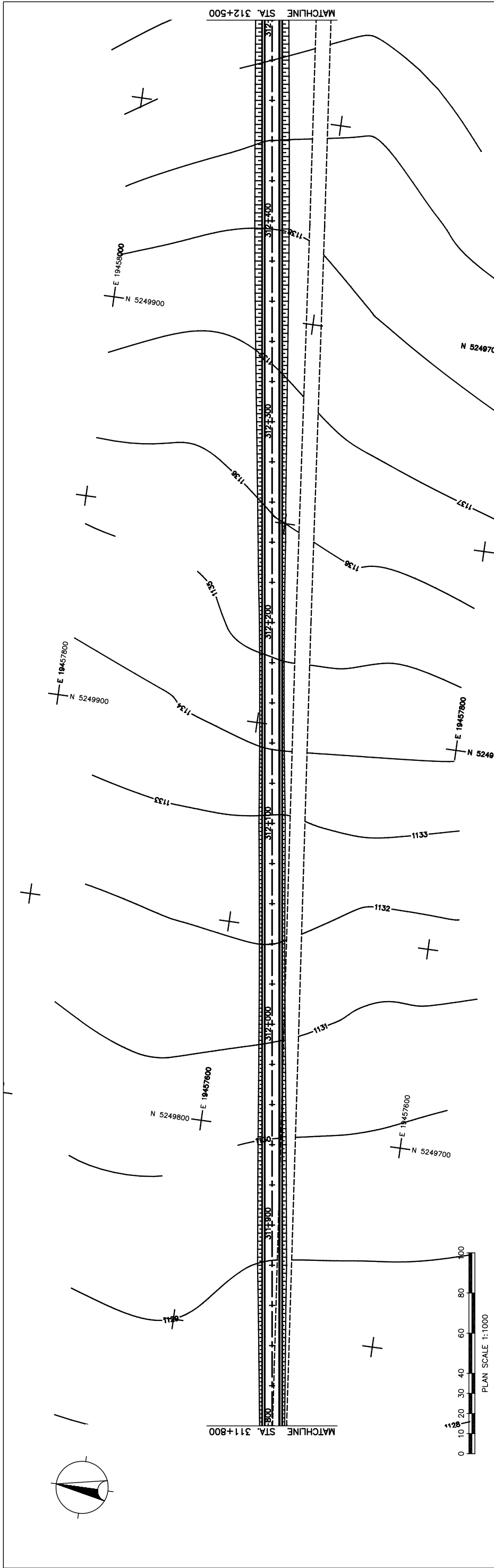
PACIFIC CONSULTANTS INTERNATIONAL
 JAPAN OVERSEAS CONSULTANTS

Drawing title
PLAN AND PROFILE
 STA. 311+100 - STA. 311+800
 (SECTION-6)

Scale
 AS SHOWN

Sheet No.
 C-15
 15/41

図 3-2-3-65 全体平面・縦断面図 (Section VI Sta. 311+100-Sta. 311+800)



STATION	311+800	+900	+1000	+200	+300	+400	312+500
FINISHED GRADE	1128.511	1129.456	1128.648	1129.736	1128.785	1130.016	1128.785
ORIGINAL GROUND	1128.511	1129.456	1129.626	1131.136	1129.626	1131.136	1128.511
HORIZONTAL CURVATURE	STRAIGHT						
VERTICAL CURVATURE	g = 1.400%						
SUPERELEVATION	N.C.						

THE BASIC DESIGN STUDY ON CONSTRUCTION OF EASTERN ARTERIAL ROAD IN MONGOLIA

JAPAN INTERNATIONAL COOPERATION AGENCY (JICA)
 DEPARTMENT OF ROADS,
 MINISTRY OF INFRASTRUCTURE,
 THE GOVERNMENT OF MONGOLIA

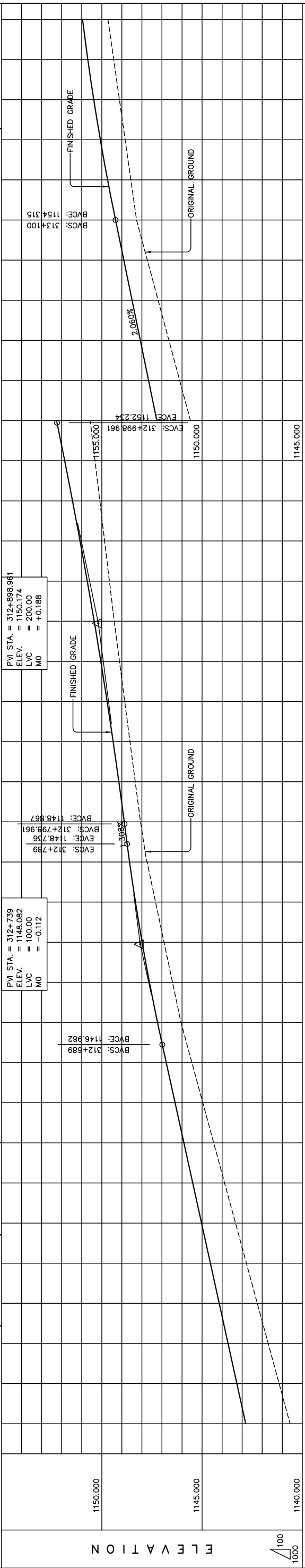
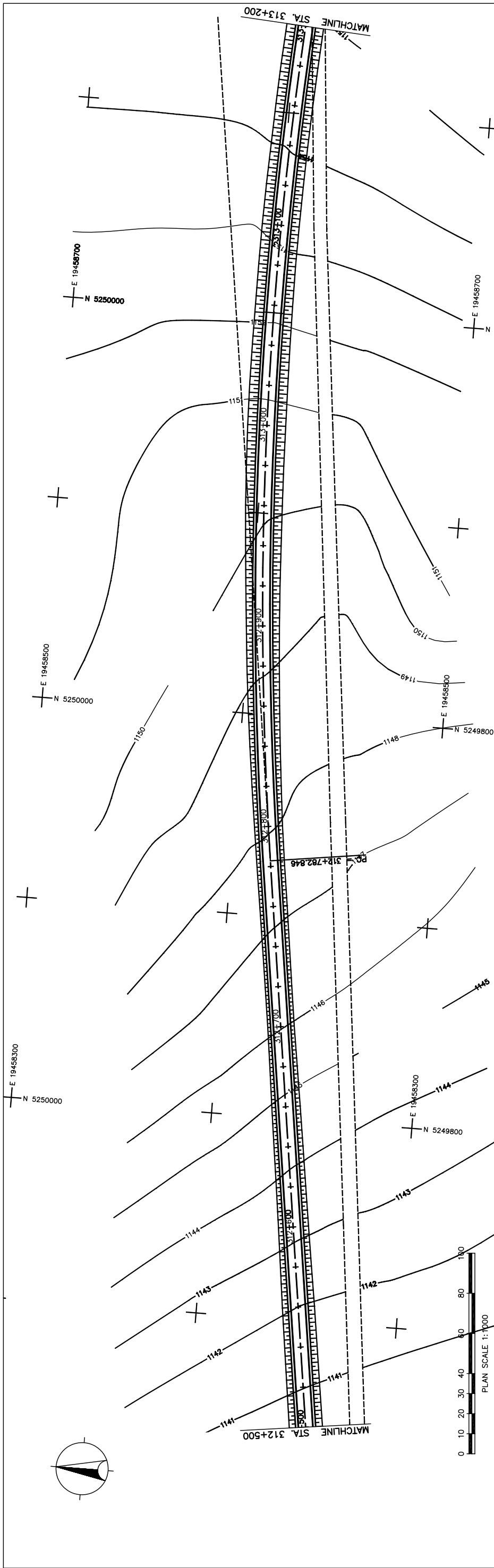
PACIFIC CONSULTANTS INTERNATIONAL
 JAPAN OVERSEAS CONSULTANTS

Drawing title
PLAN AND PROFILE
 STA. 311+800 - STA. 312+500
 (SECTION-6)

Scale
 AS SHOWN

Sheet No.
 C-16
 16/41

3-2-3-66 全体平面・縦断面図 (Section VI Sta.311+800-Sta.312+500)



STATION	FINISHED GRADE	ORIGINAL GROUND	HORIZONTAL CURVATURE	VERTICAL CURVATURE	SUPERELEVATION
312+500	1140.613	1142.824			
	1141.157	1143.264			
	1141.701	1143.704			
	1142.245	1144.144			
	1142.789	1144.584			
	1143.333	1145.024			
	1143.876	1145.464			
	1144.420	1145.904			
	1144.963	1146.344			
	1145.507	1146.784			
	1146.050	1147.219			
	1146.473	1147.622			
	1146.896	1147.988			
	1147.319	1148.320			
	1147.742	1148.615			
	1148.070	1148.880			
	1148.332	1149.150			
	1148.594	1149.435			
	1148.857	1149.735			
	1149.119	1150.050			
	1149.381	1150.380			
	1149.620	1150.725			
	1149.859	1151.085			
	1150.099	1151.460			
	1150.338	1151.850			
	1150.577	1152.255			
	1151.115	1152.667			
	1151.653	1153.079			
	1152.190	1153.491			
	1152.728	1153.903			
	1153.266	1154.315			
	1153.551	1154.710			
	1153.836	1155.072			
	1154.121	1155.401			
	1154.406	1155.696			
	1154.691	1155.959			

THE BASIC DESIGN STUDY ON CONSTRUCTION OF EASTERN ARTERIAL ROAD IN MONGOLIA
 DEPARTMENT OF ROADS,
 MINISTRY OF INFRASTRUCTURE,
 THE GOVERNMENT OF MONGOLIA
 JAPAN INTERNATIONAL COOPERATION AGENCY (JICA)
 PACIFIC CONSULTANTS INTERNATIONAL
 JAPAN OVERSEAS CONSULTANTS
 Drawing title
PLAN AND PROFILE
STA. 312+500 - STA. 313+200
 (SECTION-6)
 Scale
 AS SHOWN
 Sheet No.
 C-17
 17/41

図 3-2-3-67 全体平面・縦断面図 (Section VI Sta. 312+500-Sta. 313+200)