

BEGINNING OF PROJECT (SECTION 6)  
 N: 1947799.936  
 E: 5251020.665  
 STA. 301+415.800  
 ELEV: 1099.848

PLAN SCALE 1:1000

STATION	301+415.800	+500	+600	+700	+800	+900	302+000	+100
FINISHED GRADE	1098.784	1098.908	1098.879	1098.820	1098.849	1099.677	1099.832	1097.102
ORIGINAL GROUND	1099.848	1099.522	1099.600	1099.754	1099.677	1099.849	1097.470	1097.175
HORIZONTAL CURVATURE								
VERTICAL CURVATURE		$g = -0.387\%$		$g = 0.300\%$		$g = -0.684\%$		$g = -0.368\%$
SUPERELEVATION								

図 3-2-3-51 全体平面・縦断面 (Section VI Sta.301+415.800-Sta.302+100)

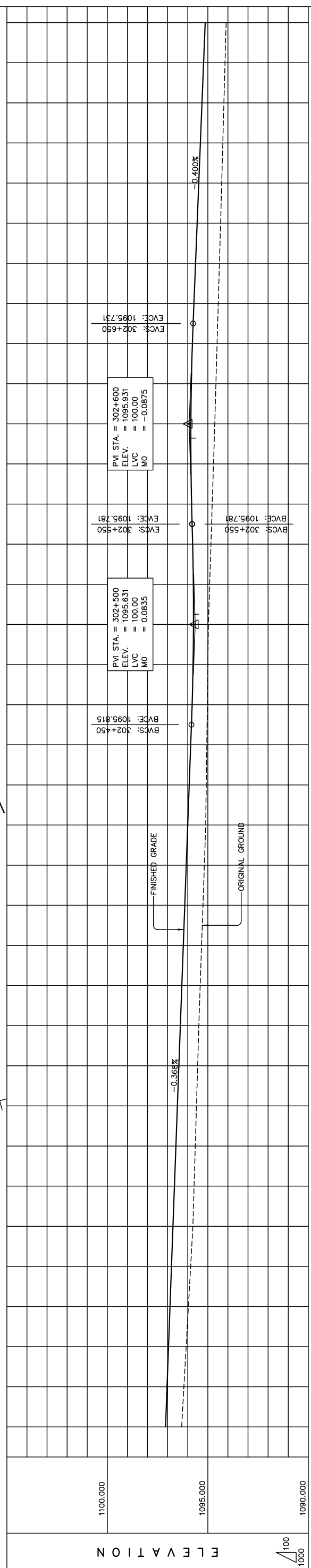
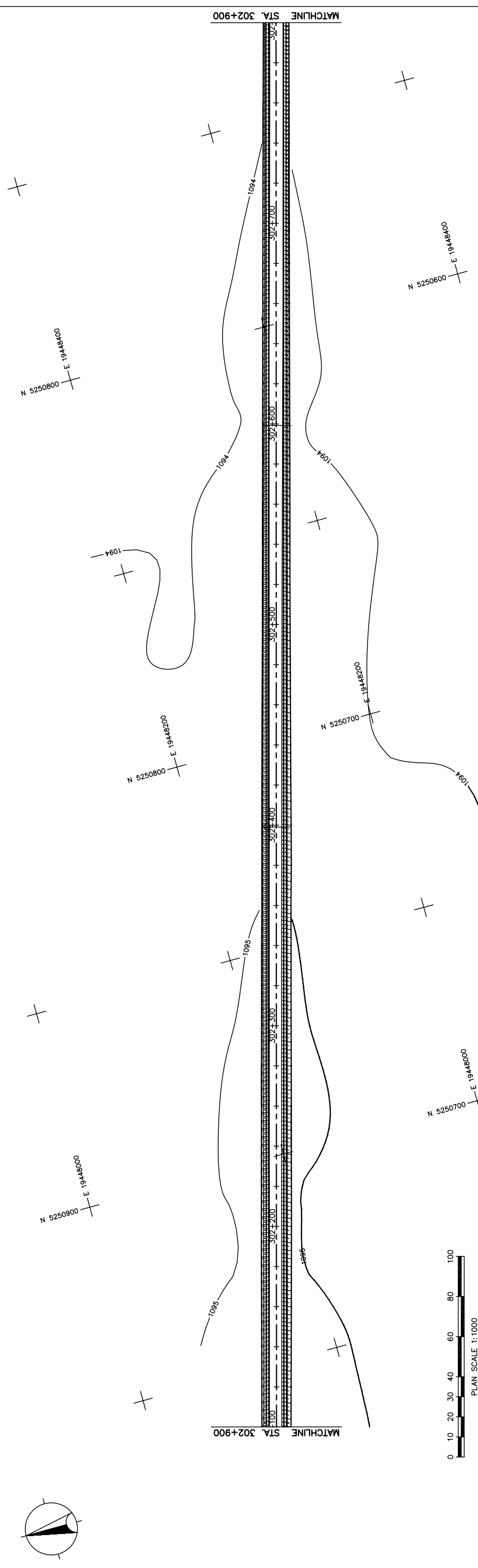
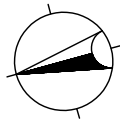
THE BASIC DESIGN STUDY ON CONSTRUCTION OF EASTERN ARTERIAL ROAD IN MONGOLIA

JAPAN INTERNATIONAL COOPERATION AGENCY (JICA)  
 DEPARTMENT OF ROADS,  
 MINISTRY OF INFRASTRUCTURE,  
 THE GOVERNMENT OF MONGOLIA

PACIFIC CONSULTANTS INTERNATIONAL  
 JAPAN OVERSEAS CONSULTANTS

Scale AS SHOWN

Sheet No. C-1  
 1/41



STATION	FINISHED GRADE	ORIGINAL GROUND	HORIZONTAL CURVATURE	VERTICAL CURVATURE	SUPERELEVATION
1096.302	1097.102	1096.190			
1096.078	1096.955	1096.078			
1095.967	1096.881	1095.955			
1095.855	1096.808	1095.743			
1095.743	1096.734	1095.684			
1095.625	1096.587	1095.506			
1095.506	1096.440	1095.447			
1095.379	1096.293	1095.310			
1095.242	1096.146	1095.173			
1095.105	1095.999	1095.105			
1095.078	1095.925	1095.051			
1095.025	1095.781	1094.998			
1094.971	1095.714	1094.971			
1094.908	1095.721	1094.845			
1094.781	1095.807	1094.781			
1094.718	1095.639	1094.655			
1094.597	1095.819	1094.539			
1094.539	1095.767	1094.481			
1094.423	1095.611	1094.365			
1094.310	1095.451	1094.255			
1094.200	1095.291	1094.145			
1094.090	1095.131	1094.090			

STRAIGHT

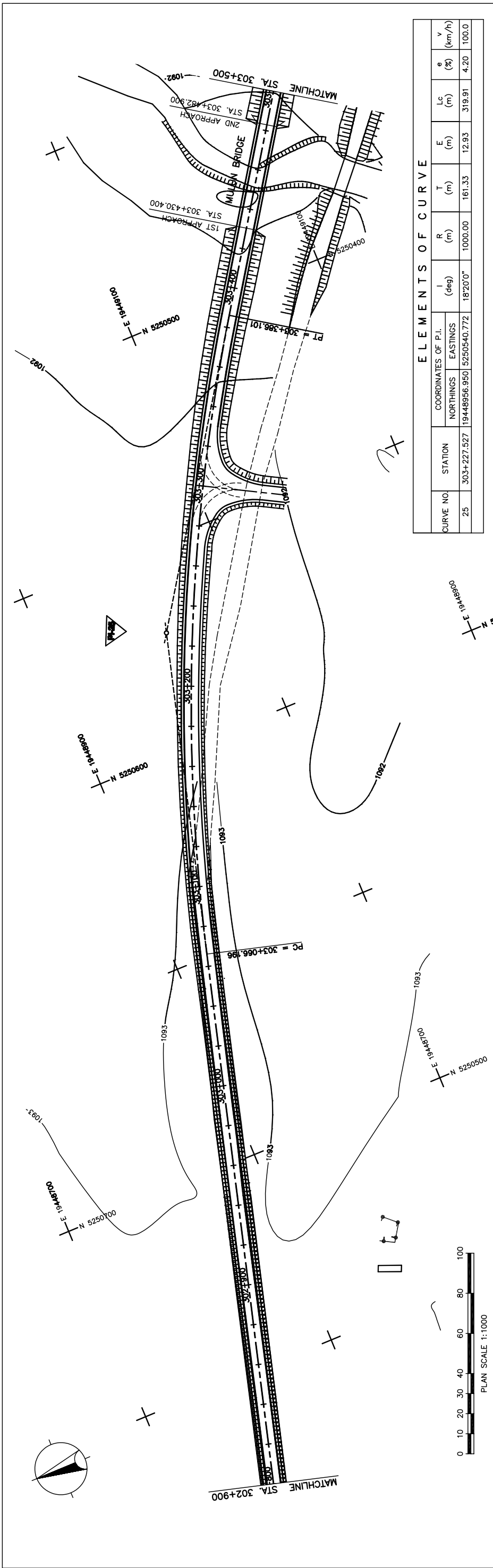
LVC = 100.00 m      LVC = 100.00 m      LVC = 100.00 m

g = -0.366%      g = -0.400%

N.C.

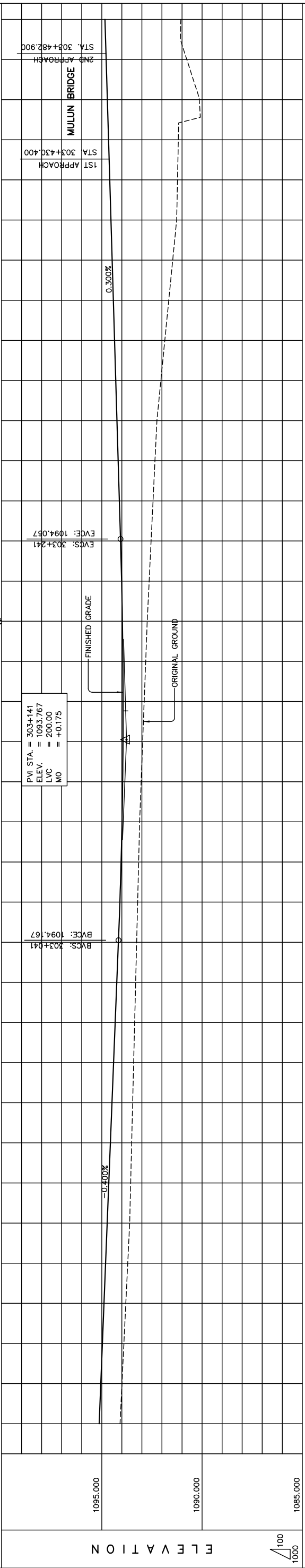
THE BASIC DESIGN STUDY ON CONSTRUCTION OF EASTERN ARTERIAL ROAD IN MONGOLIA	
JAPAN INTERNATIONAL COOPERATION AGENCY (JICA)	DEPARTMENT OF ROADS, MINISTRY OF INFRASTRUCTURE, THE GOVERNMENT OF MONGOLIA
PACIFIC CONSULTANTS INTERNATIONAL JAPAN OVERSEAS CONSULTANTS	Drawing title PLAN AND PROFILE STA. 302+100 - STA. 302+800 (SECTION-6)
Scale	AS SHOWN
Sheet No.	C-2 2 / 41

図 3-2-3-52 全体平面・縦断面 (Section VI Sta. 302+100-Sta. 302+800)



**ELEMENTS OF CURVE**

CURVE NO.	STATION	COORDINATES OF P.I.		I (deg)	R (m)	T (m)	E (m)	Lc (m)	e (%)	V (km/h)
		NORTHINGS	EASTINGS							
25	303+227.527	19448956.950	5250540.772	18°20'0"	1000.00	161.33	12.93	319.91	4.20	100.0



STATION	FINISHED GRADE	ORIGINAL GROUND	HORIZONTAL CURVATURE	VERTICAL CURVATURE	SUPERELEVATION
1085.000					
1090.000					
1095.000					
302+800	1094.090	1095.131			
	1093.994	1095.051			
	1093.898	1094.971			
	1093.802	1094.891			
	1093.706	1094.811			
	1093.610	1094.731			
	1093.560	1094.651			
	1093.510	1094.571			
	1093.461	1094.491			
	1093.411	1094.411			
	1093.361	1094.331			
	1093.311	1094.251			
	1093.262	1094.171			
	1093.212	1094.097			
	1093.162	1094.038			
	1093.112	1093.992			
	1093.037	1093.960			
	1092.961	1093.942			
	1092.886	1093.939			
	1092.810	1093.949			
	1092.735	1093.973			
	1092.638	1094.012			
	1092.542	1094.064			
	1092.445	1094.124			
	1092.348	1094.184			
	1092.251	1094.244			
	1092.054	1094.304			
	1091.857	1094.364			
	1091.660	1094.424			
	1091.463	1094.484			
	1091.266	1094.544			
	1091.069	1094.604			
	1091.183	1094.664			
	1090.138	1094.724			
	1090.761	1094.784			
	1091.059	1094.844			
303+500					

**PLAN AND PROFILE**  
STA. 302+800 - STA. 303+500 (SECTION-6)

Drawing title

Scale

Sheet No. C-3  
3 / 41

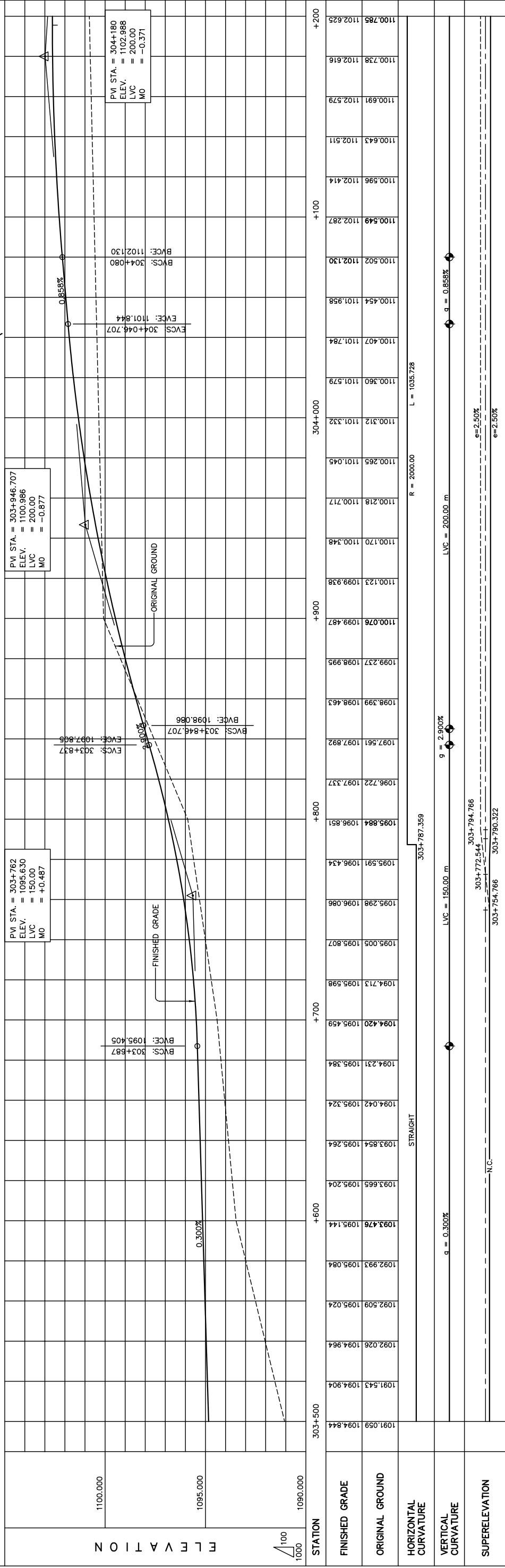
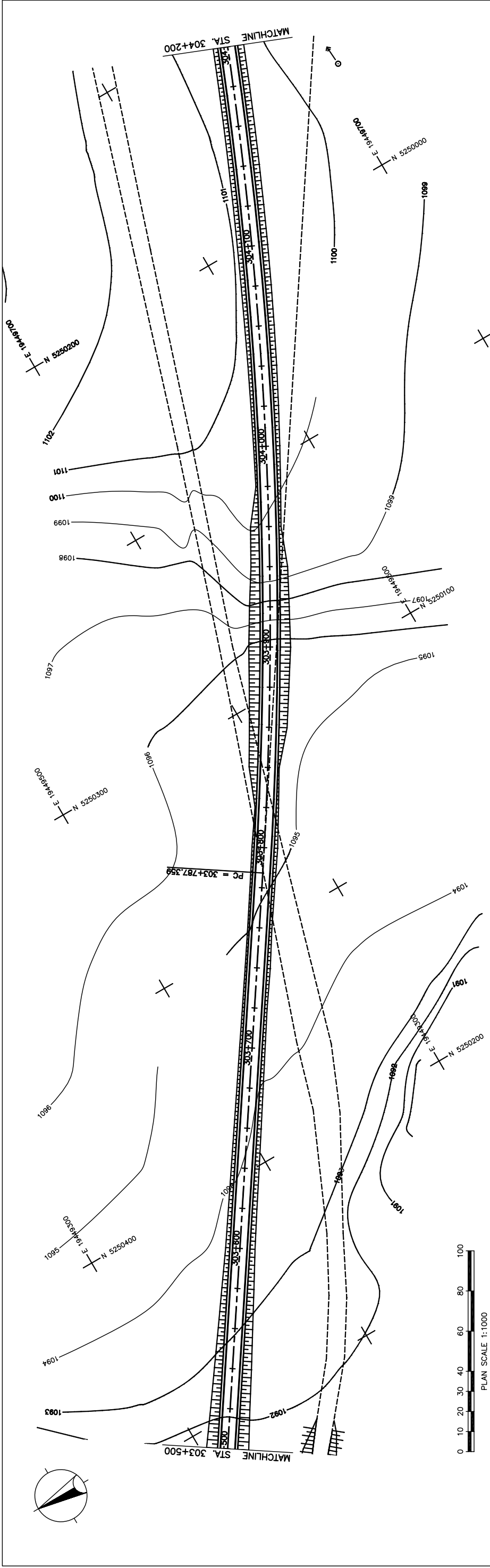
AS SHOWN

DEPARTMENT OF ROADS,  
MINISTRY OF INFRASTRUCTURE,  
THE GOVERNMENT OF MONGOLIA

JAPAN INTERNATIONAL COOPERATION AGENCY (JICA)  
PACIFIC CONSULTANTS INTERNATIONAL  
JAPAN OVERSEAS CONSULTANTS

THE BASIC DESIGN STUDY ON CONSTRUCTION OF EASTERN ARTERIAL ROAD IN MONGOLIA

図 3-2-3-53 全体平面・縦断面 (Section VI Sta.302+800-Sta.303+500)



STATION	FINISHED GRADE	ORIGINAL GROUND	HORIZONTAL CURVATURE	VERTICAL CURVATURE	SUPERELEVATION
303+500	1094.844	1091.543	1094.904	1092.026	1094.964
		1092.509	1095.024	1092.993	1095.084
		1093.476	1095.144	1093.993	1095.204
		1093.854	1095.264	1093.854	1095.264
		1094.042	1095.324	1094.231	1095.384
		1094.420	1095.459	1094.231	1095.384
		1094.713	1095.598	1094.713	1095.598
		1095.005	1095.807	1095.005	1095.807
		1095.298	1096.086	1095.298	1096.086
		1095.591	1096.434	1095.591	1096.434
		1095.884	1096.851	1095.884	1096.851
		1096.222	1097.337	1096.222	1097.337
		1097.561	1097.892	1097.561	1097.892
		1098.399	1098.463	1098.399	1098.463
		1099.237	1098.995	1099.237	1098.995
		1100.076	1099.487	1100.076	1099.487
		1100.123	1099.938	1100.123	1099.938
		1100.170	1100.348	1100.170	1100.348
		1100.218	1100.717	1100.218	1100.717
		1100.265	1101.045	1100.265	1101.045
		1100.312	1101.332	1100.312	1101.332
		1100.360	1101.579	1100.360	1101.579
		1100.407	1101.784	1100.407	1101.784
		1100.454	1101.958	1100.454	1101.958
		1100.502	1102.130	1100.502	1102.130
		1100.549	1102.287	1100.549	1102.287
		1100.596	1102.414	1100.596	1102.414
		1100.643	1102.511	1100.643	1102.511
		1100.691	1102.579	1100.691	1102.579
		1100.738	1102.616	1100.738	1102.616
		1100.785	1102.625	1100.785	1102.625

図 3-2-3-54 全体平面・縦断面 (Section VI Sta. 303+500-Sta. 304+200)

THE BASIC DESIGN STUDY ON CONSTRUCTION OF EASTERN ARTERIAL ROAD IN MONGOLIA

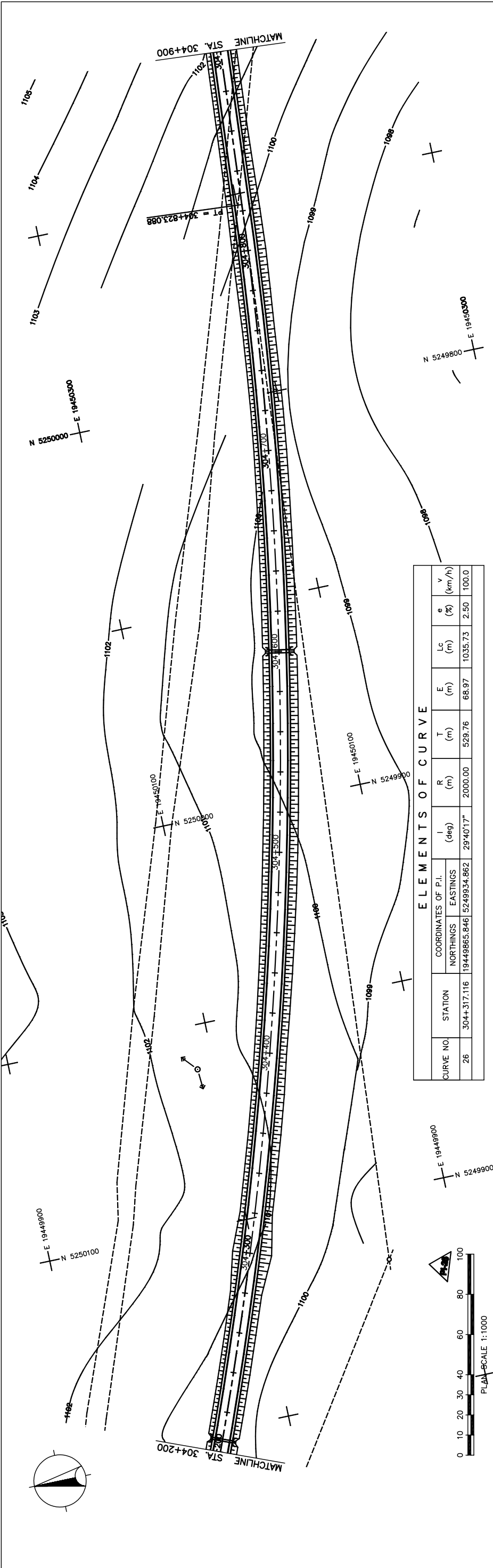
JAPAN INTERNATIONAL COOPERATION AGENCY (JICA)  
 DEPARTMENT OF ROADS,  
 MINISTRY OF INFRASTRUCTURE,  
 THE GOVERNMENT OF MONGOLIA

PACIFIC CONSULTANTS INTERNATIONAL  
 JAPAN OVERSEAS CONSULTANTS

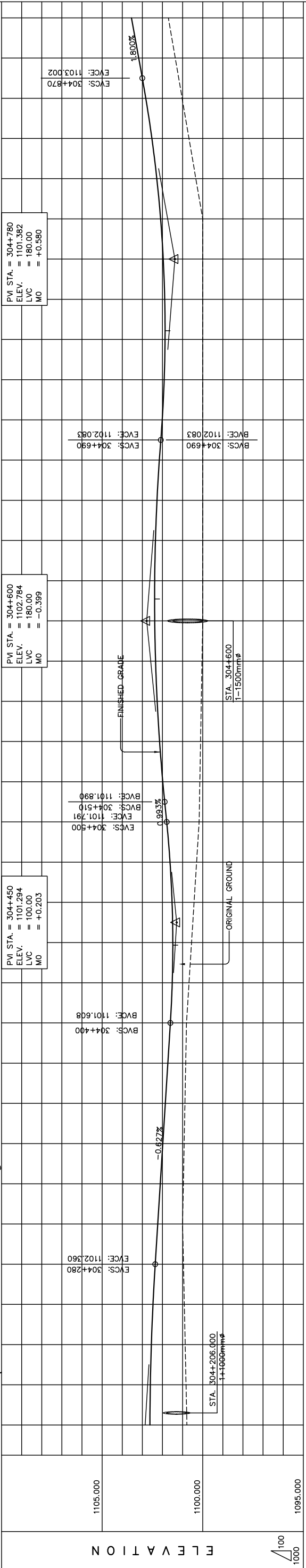
Drawing title  
 PLAN AND PROFILE  
 STA. 303+500 - STA. 304+200  
 (SECTION-6)

Scale  
 AS SHOWN

Sheet No.  
 C-4  
 4 / 41



ELEMENTS OF CURVE											
CURVE NO.	STATION	COORDINATES OF P.I.		I (deg)	R (m)	T (m)	E (m)	Lc (m)	e (%)	v (km/h)	
		NORTHINGS	EASTINGS								
26	304+317.116	19449865.846	5249934.862	29°40'17"	2000.00	529.76	68.97	1035.73	2.50	100.0	



STATION	ELEVATION		HORIZONTAL CURVATURE	VERTICAL CURVATURE	SUPERELEVATION
	FINISHED GRADE	ORIGINAL GROUND			
304+200	1102.625	1102.785			
304+210	1102.235	1102.914			
304+220	1102.471	1102.957			
304+230	1102.733	1102.977			
304+240	1101.515	1101.515			
304+250	1101.486	1101.555			
304+260	1101.523	1101.430			
304+270	1101.624	1101.304			
304+280	1101.791	1101.179			
304+290	1101.984	1101.143			
304+300	1102.144	1101.107			
304+310	1102.264	1100.072			
304+320	1102.344	1100.036			
304+330	1102.385	1100.000			
304+340	1102.387	1100.000			
304+350	1102.012	1100.000			
304+360	1102.156	1100.000			
304+370	1102.083	1100.000			
304+380	1102.083	1100.000			
304+390	1102.829	1101.024			
304+400	1102.829	1101.365			
304+410	1102.829	1101.226			
304+420	1102.829	1101.024			
304+430	1102.829	1101.024			
304+440	1102.829	1101.024			
304+450	1102.829	1101.024			
304+460	1102.829	1101.024			
304+470	1102.829	1101.024			
304+480	1102.829	1101.024			
304+490	1102.829	1101.024			
304+500	1102.829	1101.024			
304+510	1102.829	1101.024			
304+520	1102.829	1101.024			
304+530	1102.829	1101.024			
304+540	1102.829	1101.024			
304+550	1102.829	1101.024			
304+560	1102.829	1101.024			
304+570	1102.829	1101.024			
304+580	1102.829	1101.024			
304+590	1102.829	1101.024			
304+600	1102.829	1101.024			
304+610	1102.829	1101.024			
304+620	1102.829	1101.024			
304+630	1102.829	1101.024			
304+640	1102.829	1101.024			
304+650	1102.829	1101.024			
304+660	1102.829	1101.024			
304+670	1102.829	1101.024			
304+680	1102.829	1101.024			
304+690	1102.829	1101.024			
304+700	1102.829	1101.024			
304+710	1102.829	1101.024			
304+720	1102.829	1101.024			
304+730	1102.829	1101.024			
304+740	1102.829	1101.024			
304+750	1102.829	1101.024			
304+760	1102.829	1101.024			
304+770	1102.829	1101.024			
304+780	1102.829	1101.024			
304+790	1102.829	1101.024			
304+800	1102.829	1101.024			
304+810	1102.829	1101.024			
304+820	1102.829	1101.024			
304+830	1102.829	1101.024			
304+840	1102.829	1101.024			
304+850	1102.829	1101.024			
304+860	1102.829	1101.024			
304+870	1102.829	1101.024			
304+880	1102.829	1101.024			
304+890	1102.829	1101.024			
304+900	1102.829	1101.024			

THE BASIC DESIGN STUDY ON CONSTRUCTION OF EASTERN ARTERIAL ROAD IN MONGOLIA

JAPAN INTERNATIONAL COOPERATION AGENCY (JICA)  
 PACIFIC CONSULTANTS INTERNATIONAL  
 JAPAN OVERSEAS CONSULTANTS

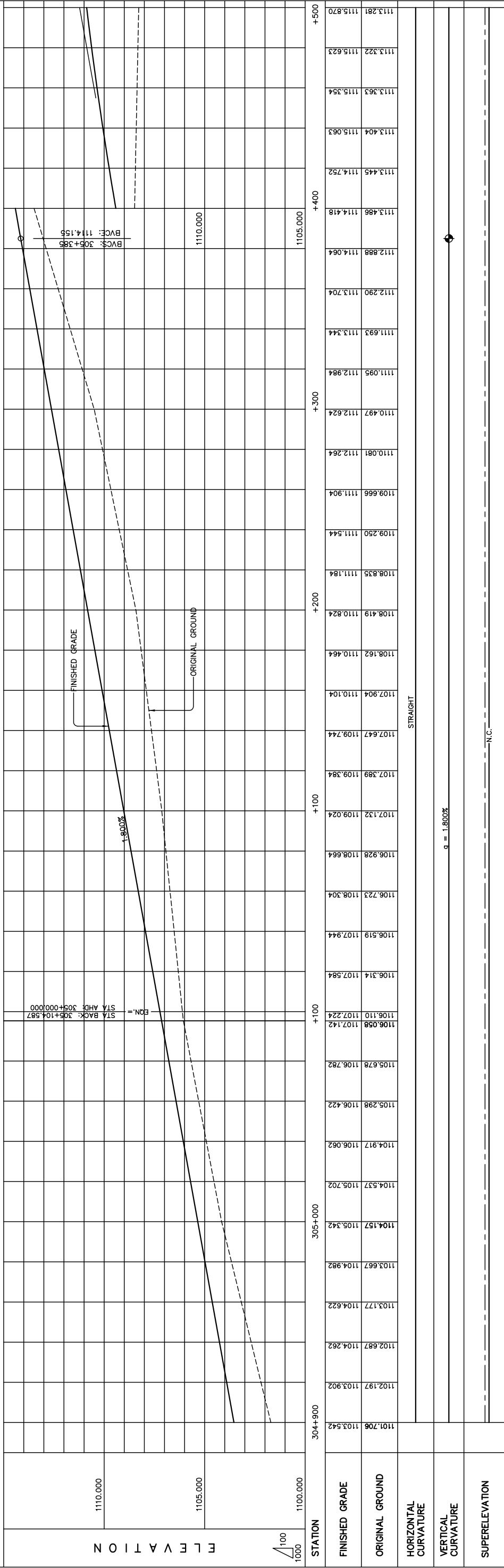
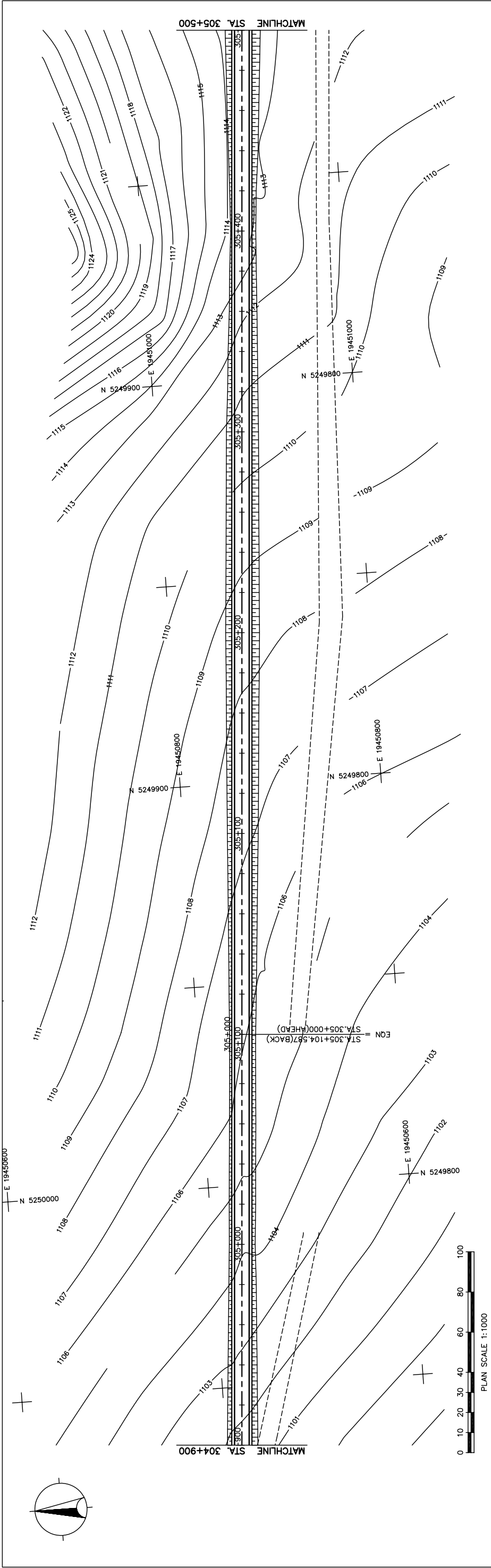
DEPARTMENT OF ROADS,  
 MINISTRY OF INFRASTRUCTURE,  
 THE GOVERNMENT OF MONGOLIA

Drawing title  
 PLAN AND PROFILE  
 STA. 304+200 - STA. 304+900  
 (SECTION-6)

Scale  
 AS SHOWN

Sheet No.  
 CS  
 3/41

図 3-2-3-55 全体平面・縦断面 (Section VI Sta. 304+200-Sta. 304+900)



STATION	ELEVATION	
	FINISHED GRADE	ORIGINAL GROUND
1101.706	1103.542	1101.706
1102.197	1103.902	1102.197
1102.687	1104.262	1102.687
1103.177	1104.622	1103.177
1103.667	1104.982	1103.667
1104.157	1105.342	1104.157
1104.537	1105.702	1104.537
1104.917	1106.062	1104.917
1105.298	1106.422	1105.298
1105.678	1106.782	1105.678
1106.058	1107.142	1106.058
1106.110	1107.224	1106.110
1106.314	1107.584	1106.314
1106.519	1107.944	1106.519
1106.723	1108.304	1106.723
1106.928	1108.664	1106.928
1107.132	1109.024	1107.132
1107.389	1109.384	1107.389
1107.647	1109.744	1107.647
1107.904	1110.104	1107.904
1108.162	1110.464	1108.162
1108.419	1110.824	1108.419
1108.635	1111.184	1108.635
1108.835	1111.544	1108.835
1109.250	1111.544	1109.250
1109.666	1111.904	1109.666
1110.081	1112.264	1110.081
1110.497	1112.624	1110.497
1110.905	1112.984	1110.905
1111.693	1113.344	1111.693
1112.290	1113.704	1112.290
1112.888	1114.064	1112.888
1113.486	1114.418	1113.486
1113.445	1114.752	1113.445
1113.404	1115.063	1113.404
1113.363	1115.354	1113.363
1113.322	1115.623	1113.322
1113.281	1115.870	1113.281

THE BASIC DESIGN STUDY ON CONSTRUCTION OF EASTERN ARTERIAL ROAD IN MONGOLIA

JAPAN INTERNATIONAL COOPERATION AGENCY (JICA)  
 DEPARTMENT OF ROADS,  
 MINISTRY OF INFRASTRUCTURE,  
 THE GOVERNMENT OF MONGOLIA

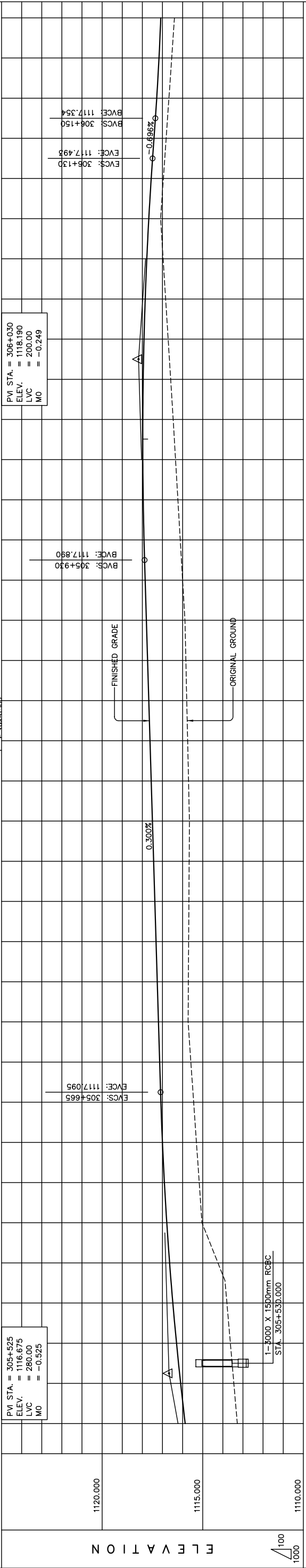
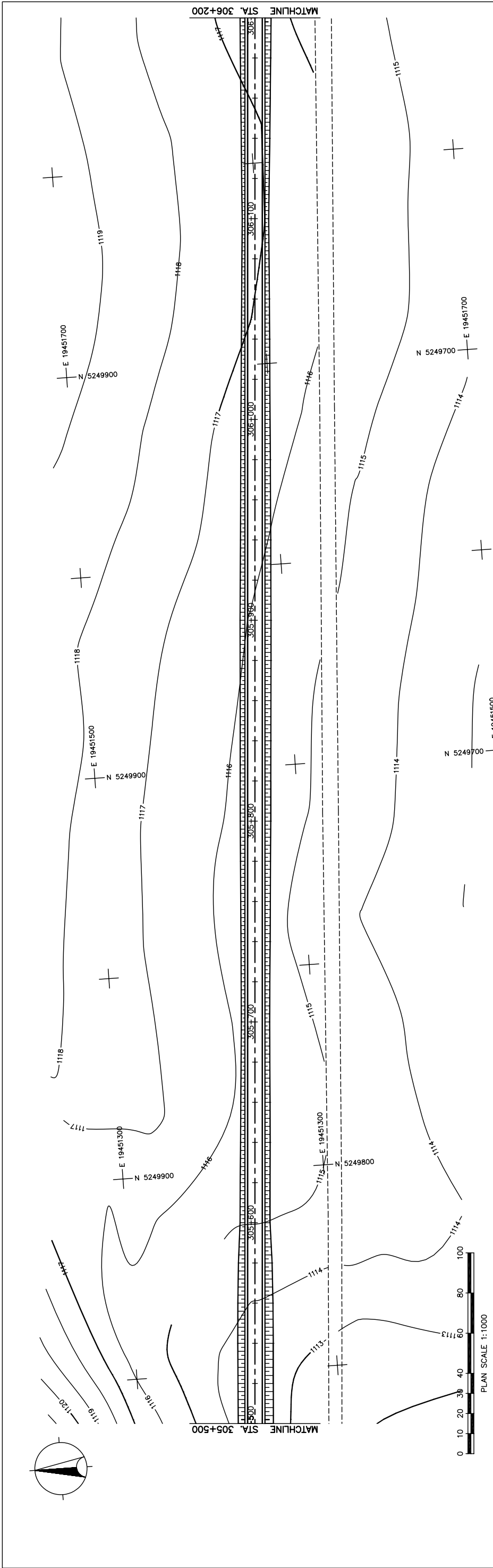
PACIFIC CONSULTANTS INTERNATIONAL  
 JAPAN OVERSEAS CONSULTANTS

Scale: AS SHOWN

Sheet No. C-6  
 6/14

PLAN AND PROFILE  
 STA. 304+900 - STA. 305+500  
 (SECTION-5)

図 3-2-3-56 全体平面・縦断面 (Section VI Sta.304+900-Sta.305+500)



STATION	FINISHED GRADE	ORIGINAL GROUND	HORIZONTAL CURVATURE	VERTICAL CURVATURE	SUPERELEVATION
305+500	1113.281	1115.870			
	1113.453	1116.096			
	1113.625	1116.301			
	1113.798	1116.484			
	1114.244	1116.646			
	1115.036	1116.786			
	1115.174	1116.905			
	1115.312	1117.003			
	1115.451	1117.079			
	1115.589	1117.140			
	1115.727	1117.200			
	1115.714	1117.260			
	1115.705	1117.560			
	1115.749	1117.620			
	1115.794	1117.680			
	1115.838	1117.740			
	1115.883	1117.800			
	1116.000	1117.860			
	1116.117	1117.917			
	1116.234	1117.957			
	1116.351	1117.977			
	1116.468	1117.977			
306+000	1116.593	1117.958			
	1116.718	1117.918			
	1116.843	1117.858			
	1116.968	1117.779			
	1117.093	1117.680			
	1117.955	1117.560			
	1116.817	1117.423			
	1116.680	1117.287			
	1116.542	1117.173			
306+200	1116.404	1117.084			

THE BASIC DESIGN STUDY ON CONSTRUCTION OF EASTERN ARTERIAL ROAD IN MONGOLIA

JAPAN INTERNATIONAL COOPERATION AGENCY (JICA)  
 DEPARTMENT OF ROADS,  
 MINISTRY OF INFRASTRUCTURE,  
 THE GOVERNMENT OF MONGOLIA

PACIFIC CONSULTANTS INTERNATIONAL  
 JAPAN OVERSEAS CONSULTANTS

Drawing title  
**PLAN AND PROFILE**  
 STA. 305+500 - STA. 306+200  
 (SECTION-6)

Scale  
 AS SHOWN

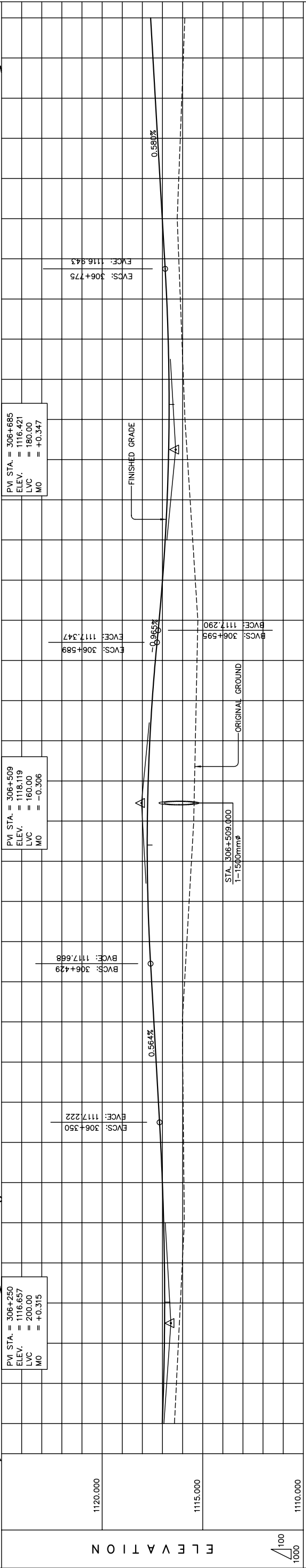
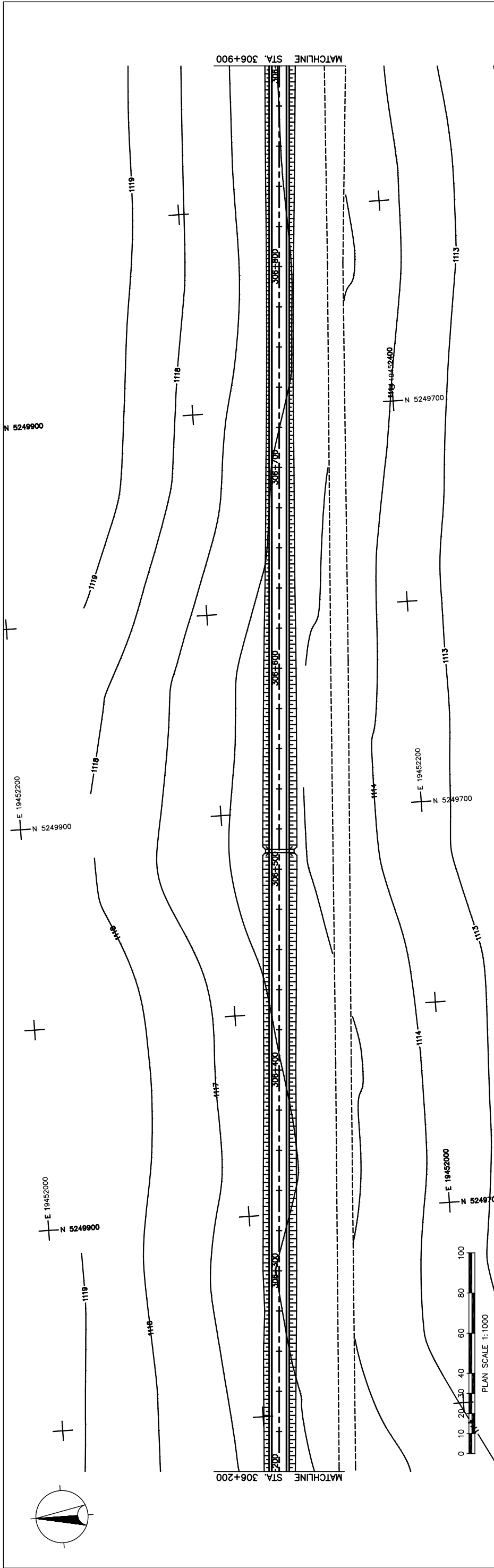
Sheet No.  
 C-7  
 7/41

STRAIGHT  
 $g = 0.300\%$   
 LVC = 280.00 m

$g = -0.686\%$   
 LVC = 200.00 m

N.C.

図 3-2-3-57 全体平面・縦断面図 (Section VI Sta.305+500-Sta.306+200)



STATION	FINISHED GRADE	ORIGINAL GROUND	HORIZONTAL CURVATURE	VERTICAL CURVATURE	SUPERELEVATION
306+200	1116.404	1117.084			
	1116.306	1117.021			
	1116.208	1116.982			
	1116.111	1116.969			
	1116.013	1116.981			
	1115.915	1117.018			
	1115.935	1117.081			
	1115.954	1117.168			
	1115.974	1117.278			
	1115.993	1117.391			
	1116.013	1117.504			
	1115.900	1117.617			
	1115.787	1117.724			
	1115.673	1117.797			
	1115.560	1117.831			
	1115.447	1117.827			
	1115.406	1117.785			
	1115.365	1117.705			
	1115.324	1117.587			
	1115.283	1117.430			
	1115.242	1117.242			
	1115.370	1117.075			
	1115.498	1116.942			
	1115.626	1116.844			
	1115.754	1116.780			
	1115.882	1116.750			
	1115.959	1116.754			
	1116.036	1116.793			
	1116.113	1116.866			
	1116.190	1116.972			
	1116.267	1117.088			
	1116.191	1117.204			
	1116.116	1117.320			
	1116.040	1117.436			
	1115.965	1117.552			
	1115.889	1117.668			

THE BASIC DESIGN STUDY ON CONSTRUCTION OF EASTERN ARTERIAL ROAD IN MONGOLIA

JAPAN INTERNATIONAL COOPERATION AGENCY (JICA)  
 DEPARTMENT OF ROADS,  
 MINISTRY OF INFRASTRUCTURE,  
 THE GOVERNMENT OF MONGOLIA

PACIFIC CONSULTANTS INTERNATIONAL  
 JAPAN OVERSEAS CONSULTANTS

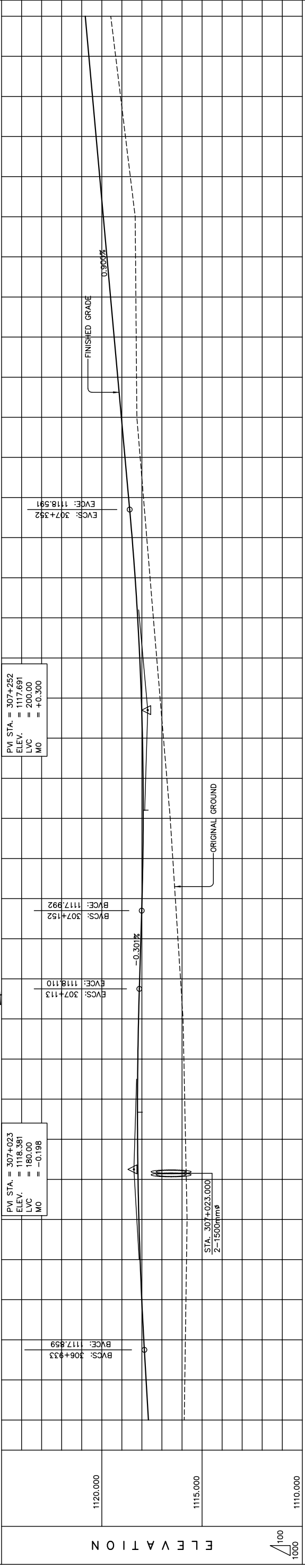
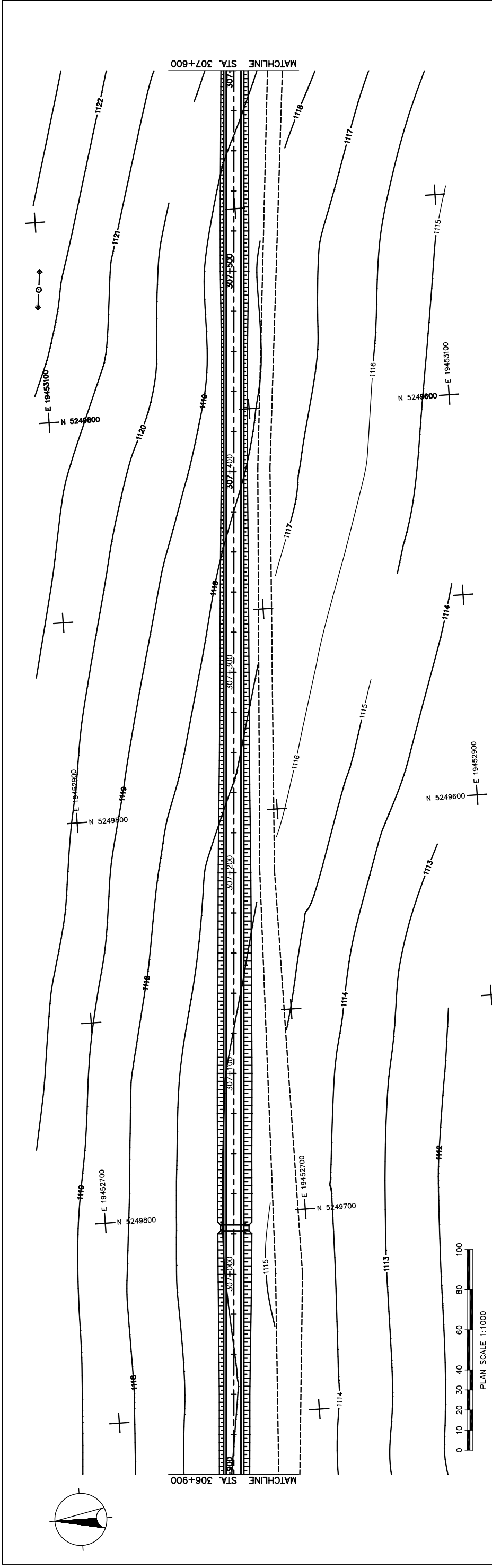
Drawing title  
 PLAN AND PROFILE  
 STA. 306+200 - STA. 306+900  
 (SECTION-6)

Scale  
 AS SHOWN

Sheet No.  
 C-8  
 8 / 41

図 3-2-3-58 全体平面・縦断面 (Section VI Sta.306+200-Sta.306+900)





	306+900	307+000	307+100	307+200	307+300	307+400	307+500	307+600
FINISHED GRADE	1115.889	1117.784	1115.860	1117.784	1115.832	1117.898	1115.803	1117.998
ORIGINAL GROUND	1115.826	1118.199	1115.926	1118.178	1115.786	1118.178	1115.725	1118.077
HORIZONTAL CURVATURE	STRAIGHT							
VERTICAL CURVATURE	LVC = 180.00 m							
SUPERELEVATION	LVC = 200.00 m							

THE BASIC DESIGN STUDY ON CONSTRUCTION OF EASTERN ARTERIAL ROAD IN MONGOLIA

JAPAN INTERNATIONAL COOPERATION AGENCY (JICA) PACIFIC CONSULTANTS INTERNATIONAL JAPAN OVERSEAS CONSULTANTS	DEPARTMENT OF ROADS, MINISTRY OF INFRASTRUCTURE, THE GOVERNMENT OF MONGOLIA
Drawing title <b>PLAN AND PROFILE          STA. 306+900 - STA. 307+600          (SECTION-6)</b>	
Scale	Sheet No.
AS SHOWN	C-9 7/41

図 3-2-3-59 全体平面・縦断面 (Section VI Sta.306+900-Sta.307+600)