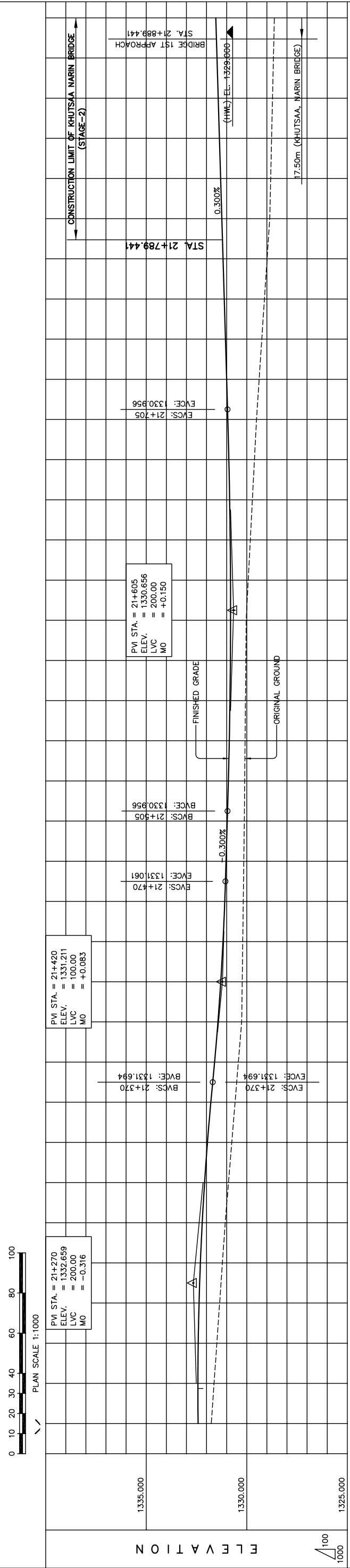
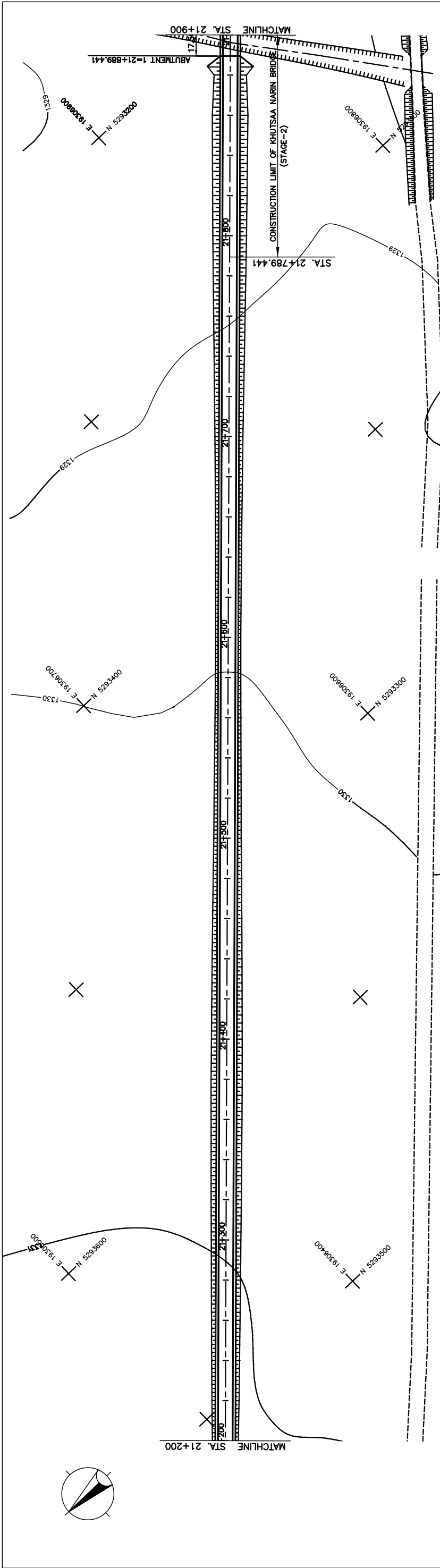


図 3-2-3-9 全体平面・縦断面 (Section II 新設区間 Sta.20+500-Sta.21+200)



STATION	FINISHED GRADE	ORIGINAL GROUND	HORIZONTAL CURVATURE	VERTICAL CURVATURE	SUPERELEVATION
21+200	1331.775	1332.421			
	1331.627	1332.430			
	1331.488	1332.414			
	1331.211	1332.306			
	1331.072	1332.214			
	1330.909	1332.097			
	1330.746	1331.955			
	1330.582	1331.787			
	1330.418	1331.600			
	1330.255	1331.434			
	1330.226	1331.294			
	1330.200	1331.181			
	1330.174	1331.094			
	1330.148	1331.031			
	1330.121	1330.971			
	1330.103	1330.914			
	1330.084	1330.869			
	1330.066	1330.836			
	1330.047	1330.815			
	1330.028	1330.806			
	1329.927	1330.809			
	1329.824	1330.824			
	1329.721	1330.851			
	1329.619	1330.890			
	1329.516	1330.941			
	1329.385	1331.001			
	1329.253	1331.061			
	1329.121	1331.121			
	1328.990	1331.181			
	1328.858	1331.241			
	1328.811	1331.301			
	1328.765	1331.361			
	1328.719	1331.421			
	1328.674	1331.481			
	1328.628	1331.541			

THE BASIC DESIGN STUDY ON CONSTRUCTION OF EASTERN ARTERIAL ROAD IN MONGOLIA

JAPAN INTERNATIONAL COOPERATION AGENCY (JICA)
 PACIFIC CONSULTANTS INTERNATIONAL
 JAPAN OVERSEAS CONSULTANTS

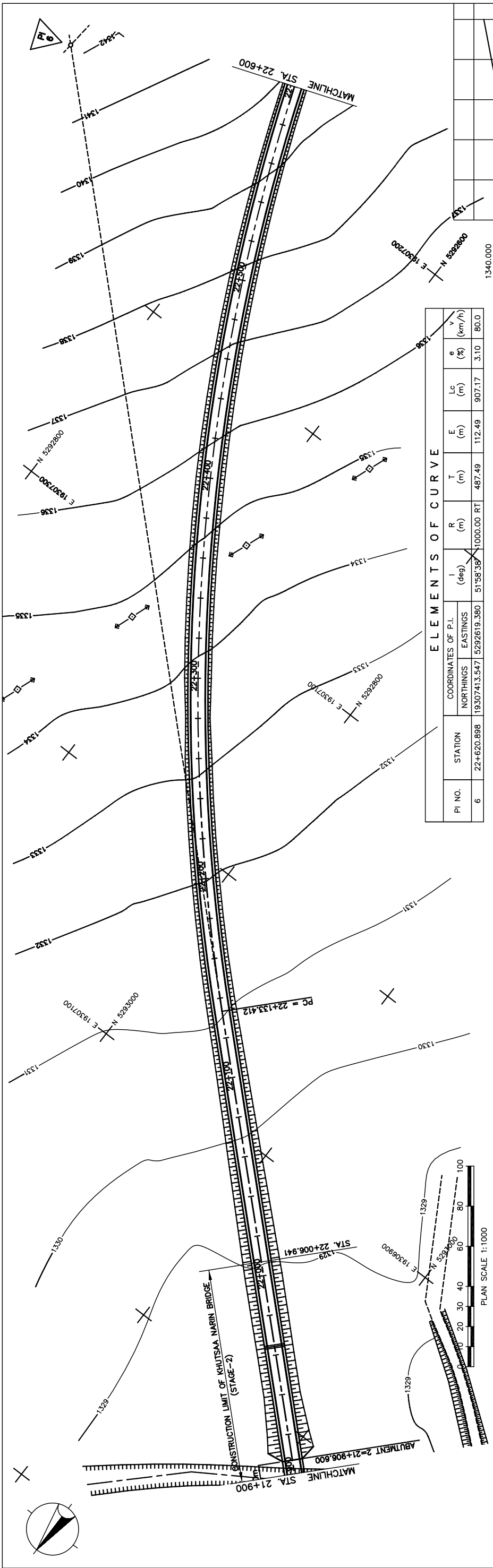
DEPARTMENT OF ROADS,
 MINISTRY OF INFRASTRUCTURE,
 THE GOVERNMENT OF MONGOLIA

Drawing title
PLAN AND PROFILE
 (STA.21+200 TO STA.21+900)
 (STAGE-1)

Scale
 AS SHOWN

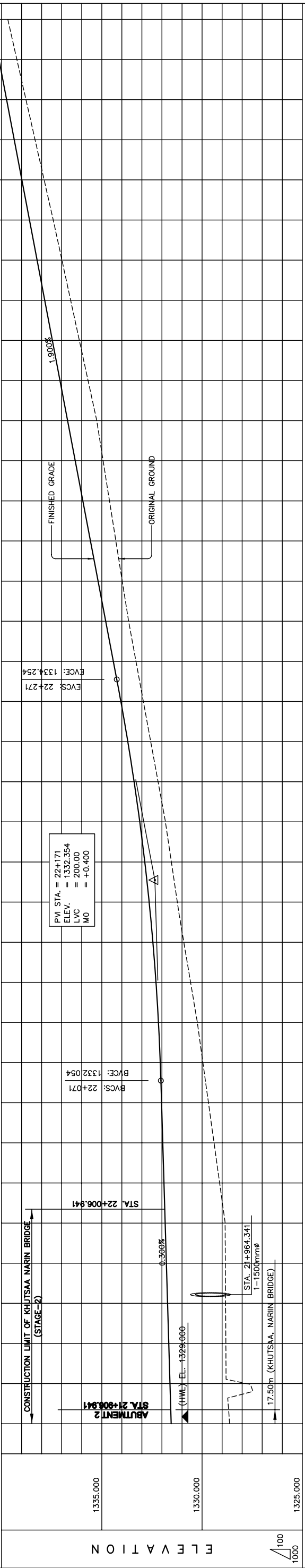
Sheet No.
 C-8
 8 / 21

図 3-2-3-10 全体平面・縦断面 (Section II 新設区間 Sta.21+200-Sta.21+900)



ELEMENTS OF CURVE

PI NO.	STATION	COORDINATES OF P.I.		I (deg)	R (m)	T (m)	E (m)	Lc (m)	e (%)	v (km/h)
		NORTHINGS	EASTINGS							
6	22+620.898	19307413.547	5292619.380	51°58'38"	1000.00	487.49	112.49	907.17	3.10	80.0



STATION	FINISHED GRADE	ORIGINAL GROUND	HORIZONTAL CURVATURE	VERTICAL CURVATURE	SUPERELEVATION
21+900	1328.628	1331.541			
	1327.788	1331.601			
	1328.813	1331.661			
	1328.826	1331.721			
	1328.839	1331.781			
	1328.852	1331.841			
	1329.125	1331.901			
	1329.403	1331.961			
	1329.681	1332.021			
	1329.958	1332.084			
	1330.236	1332.175			
	1330.572	1332.297			
	1330.909	1332.451			
	1331.234	1332.638			
	1331.531	1332.856			
	1331.828	1333.107			
	1332.194	1333.389			
	1332.561	1333.703			
	1332.928	1334.050			
	1333.295	1334.425			
	1333.662	1334.805			
	1333.981	1335.185			
	1334.299	1335.565			
	1334.617	1335.945			
	1334.935	1336.325			
	1335.253	1336.705			
	1335.685	1337.085			
	1336.119	1337.465			
	1336.553	1337.845			
	1336.987	1338.225			
	1337.422	1338.605			
	1337.874	1338.985			
	1338.328	1339.365			
	1338.781	1339.745			
	1339.234	1340.125			
	1339.687	1340.505			

R = 1000.000
 L = 907.172
 PI-6
 g = 1.900%

LVC = 200.00 m
 g = 0.300%

+117.203 +141.517
 +101.517 +132.889

STRAIGHT
 NC

PLAN SCALE 1:1000

CONSTRUCTION LIMIT OF KHUTSAA NARIN BRIDGE (STAGE-2)
 ABUTMENT 2
 STA. 21+906.941
 (HWS) EL. 1328.660
 17.50m (KHUTSAA, NARIN BRIDGE)
 STA. 21+964.341
 1-1500mm

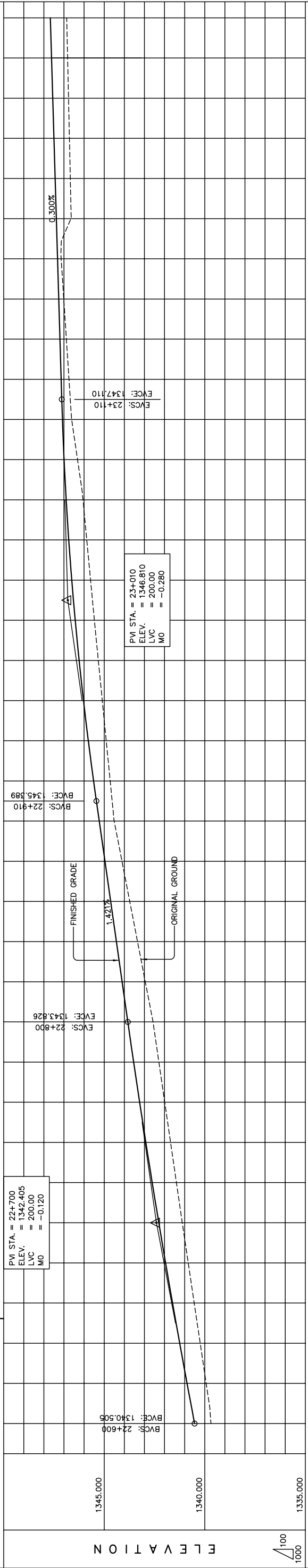
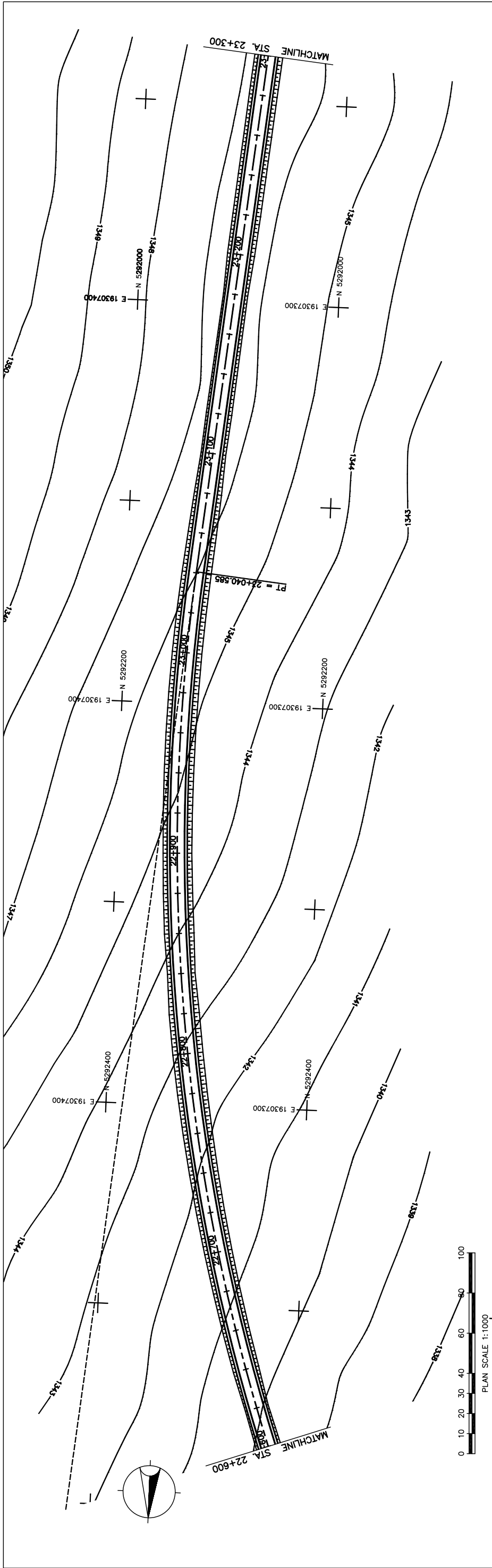
BVC: 22+071
 BVC: 1332.054
 PVI STA. = 22+171
 ELEV. = 1332.354
 LVC = 200.00
 MO = +0.400

FINISHED GRADE
 ORIGINAL GROUND

HORIZONTAL CURVATURE
 VERTICAL CURVATURE
 SUPERELEVATION

THE BASIC DESIGN STUDY ON CONSTRUCTION OF EASTERN ARTERIAL ROAD IN MONGOLIA
 JAPAN INTERNATIONAL COOPERATION AGENCY (JICA)
 PACIFIC CONSULTANTS INTERNATIONAL
 JAPAN OVERSEAS CONSULTANTS
 DEPARTMENT OF ROADS,
 MINISTRY OF INFRASTRUCTURE,
 THE GOVERNMENT OF MONGOLIA
 Drawing title
PLAN AND PROFILE (STA.21+900 TO STA.22+600) (STAGE-1)
 AS SHOWN
 Scale
 Sheet No. C-9
 9 / 21

図 3-2-3-11 全体平面・縦断面 (Section II 新設区間 Sta.21+900-Sta.22+600)



STATION	FINISHED GRADE	ORIGINAL GROUND	HORIZONTAL CURVATURE	VERTICAL CURVATURE	SUPERELEVATION
22+600	1340.505	1339.930			
	1340.822	1341.948			
	1341.119	1342.285			
	1341.410	1342.613			
	1341.701	1342.930			
	1341.991	1343.238			
	1342.282	1343.537			
	1342.573	1343.826			
	1342.958	1344.110			
	1343.344	1344.394			
	1343.731	1344.678			
	1344.117	1344.963			
	1344.503	1345.247			
	1344.703	1345.528			
	1344.900	1345.790			
	1345.096	1346.029			
	1345.293	1346.246			
	1345.490	1346.441			
	1345.678	1346.613			
	1345.867	1346.763			
	1346.056	1346.890			
	1346.327	1346.995			
	1346.619	1347.077			
	1346.751	1347.140			
	1346.881	1347.200			
	1347.011	1347.260			
	1347.140	1347.320			
	1346.577	1347.380			
	1346.686	1347.440			
	1346.730	1347.500			
	1346.775	1347.560			
	1346.820	1347.620			
	1346.864	1347.680			

THE BASIC DESIGN STUDY ON CONSTRUCTION OF EASTERN ARTERIAL ROAD IN MONGOLIA

JAPAN INTERNATIONAL COOPERATION AGENCY (JICA)
 DEPARTMENT OF ROADS,
 MINISTRY OF INFRASTRUCTURE,
 THE GOVERNMENT OF MONGOLIA

PACIFIC CONSULTANTS INTERNATIONAL
 JAPAN OVERSEAS CONSULTANTS

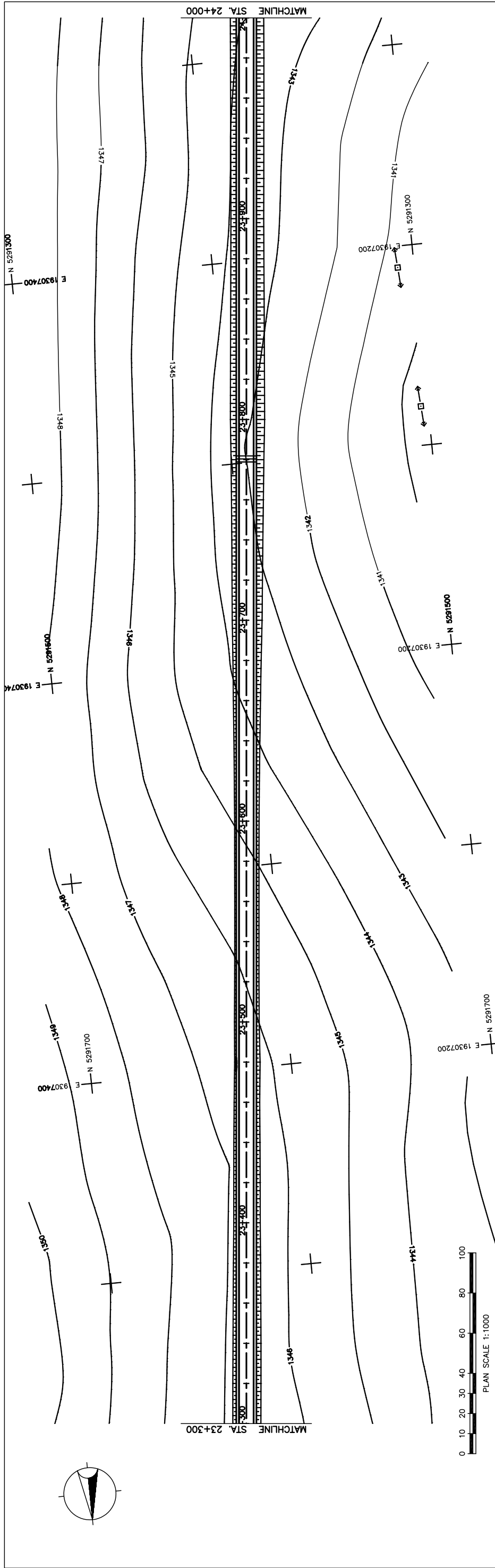
Scale AS SHOWN

Drawing title
 PLAN AND PROFILE
 (STA.22+600 TO STA.23+300)
 (STAGE-1)

Sheet No. C-10
 10/21

Vertical Curve Data:
 LVC = 200.00 m
 g = 1.421%
 g = 0.300%
 PT = 22+040.585
 +032.480
 +041.108
 +072.480

図 3-2-3-12 全体平面・縦断面 (Section II 新設区間 Sta.22+600-Sta.23+300)



THE BASIC DESIGN STUDY ON CONSTRUCTION OF EASTERN ARTERIAL ROAD IN MONGOLIA

JAPAN INTERNATIONAL COOPERATION AGENCY (JICA)
 DEPARTMENT OF ROADS,
 MINISTRY OF INFRASTRUCTURE,
 THE GOVERNMENT OF MONGOLIA

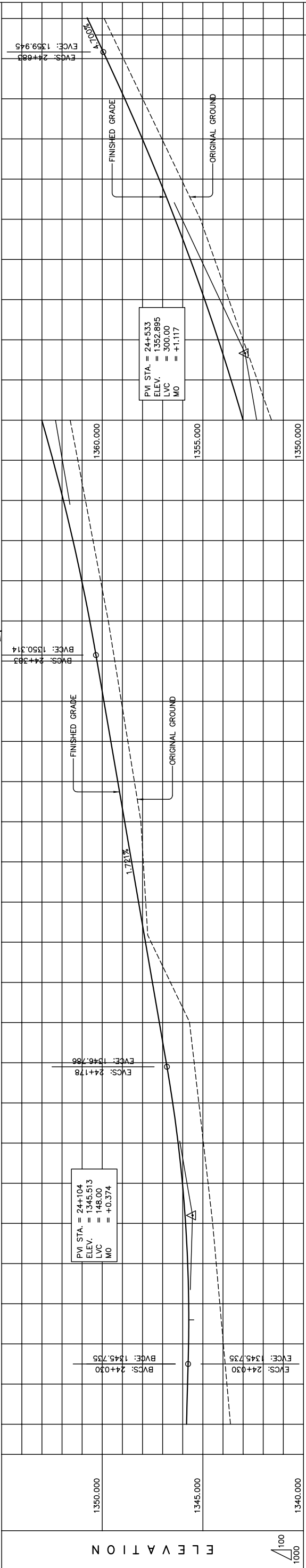
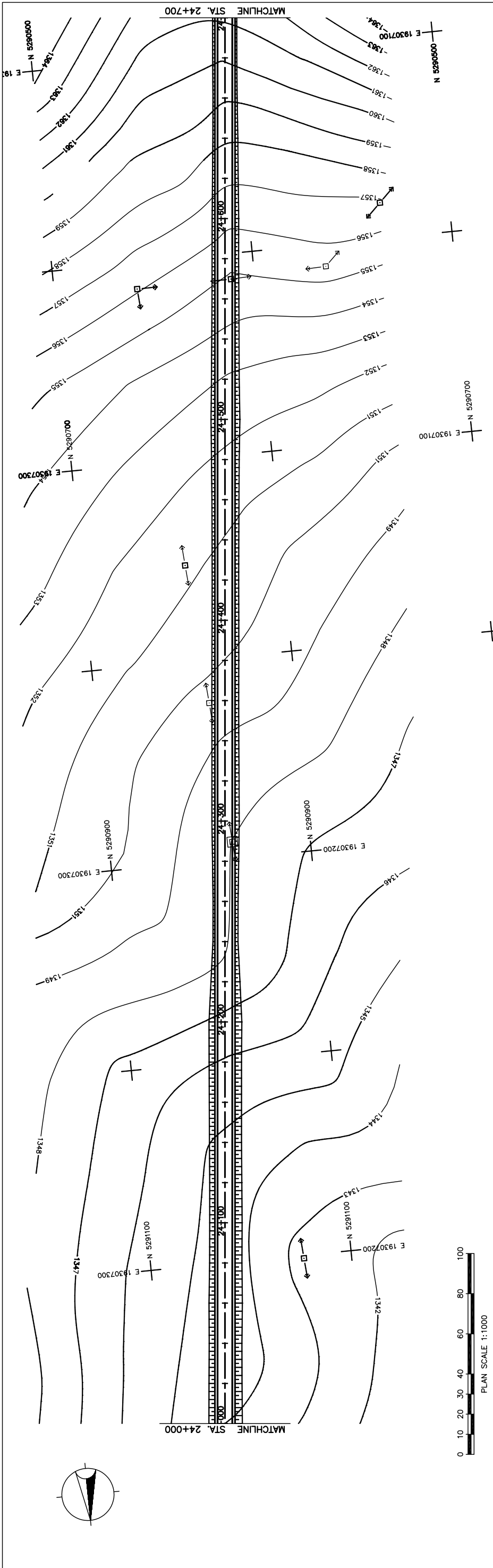
PACIFIC CONSULTANTS INTERNATIONAL
 JAPAN OVERSEAS CONSULTANTS

Drawing title
**PLAN AND PROFILE
 (STA.23+300 TO STA.24+000)
 (STAGE-1)**

Scale
 AS SHOWN

Sheet No.
 C-11
 11/21

図 3-2-3-13 全体平面・縦断面 (Section II 新設区間 Sta.23+300-Sta.24+000)



STATION	FINISHED GRADE	ORIGINAL GROUND	HORIZONTAL CURVATURE	VERTICAL CURVATURE	SUPERELEVATION
24+000	1343.805	1345.763			
24+100	1344.335	1345.756			
24+200	1345.662	1347.165			
24+300	1348.082	1348.886			
24+400	1349.702	1350.621			
24+500	1352.296	1353.603			
24+600	1355.123	1356.386			
24+700	1359.906	1360.744			

LVC = 148.00 m

LVC = 300.00 m

g = 1.72%

THE BASIC DESIGN STUDY ON CONSTRUCTION OF EASTERN ARTERIAL ROAD IN MONGOLIA

JAPAN INTERNATIONAL COOPERATION AGENCY (JICA)

DEPARTMENT OF ROADS,
MINISTRY OF INFRASTRUCTURE,
THE GOVERNMENT OF MONGOLIA

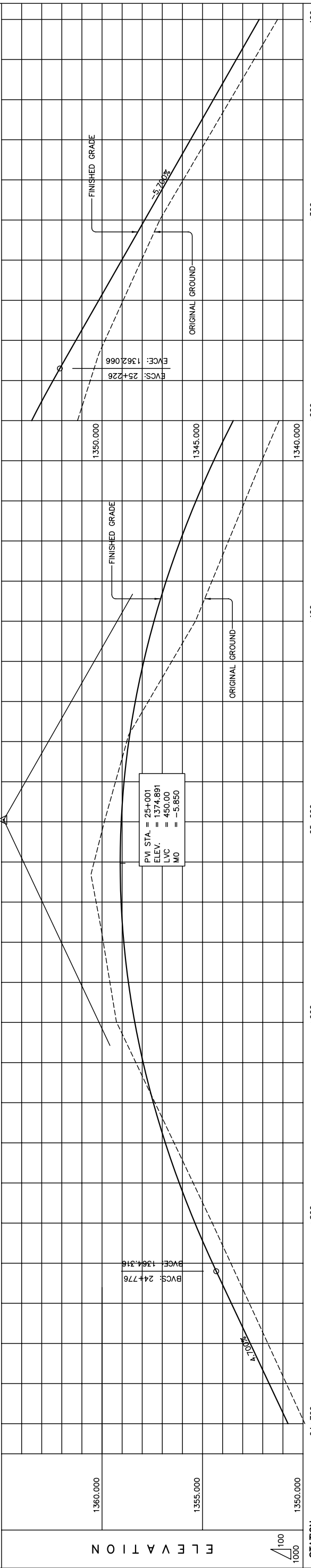
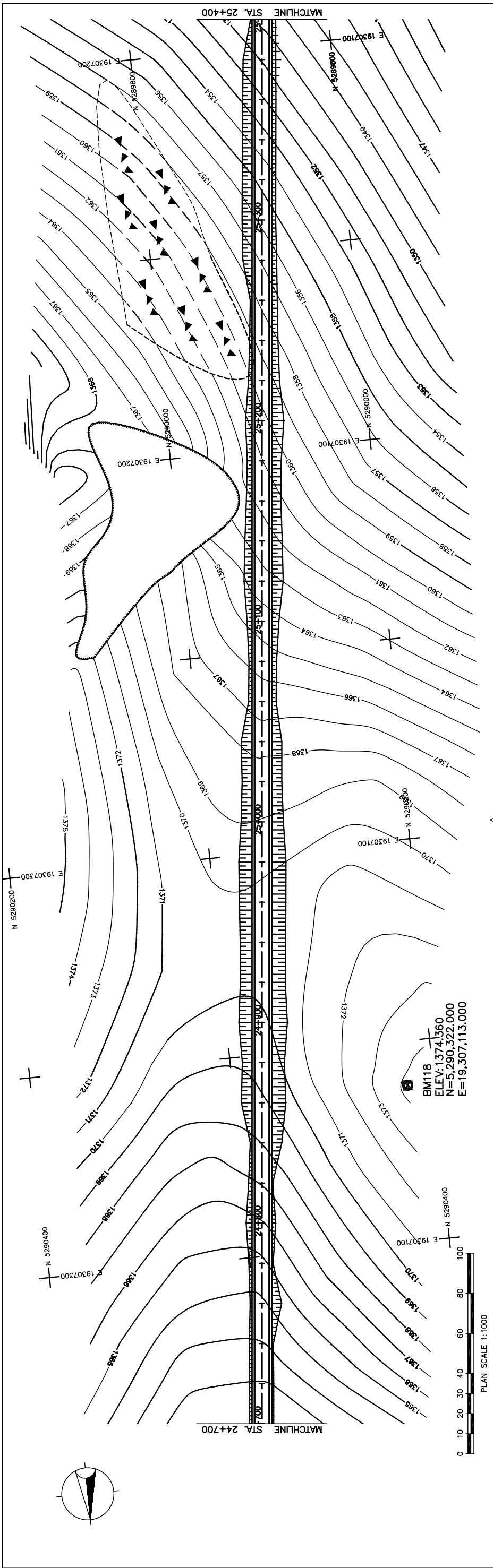
PACIFIC CONSULTANTS INTERNATIONAL
JAPAN OVERSEAS CONSULTANTS

Drawing title
PLAN AND PROFILE
(STA.24+000 TO STA.24+700)
(STAGE-B-1)

Scale
AS SHOWN

Sheet No.
C-12
12/21

図 3-2-3-14 全体平面・縦断面 (Section II 新設区間 Sta.24+000-Sta.24+700)



STATION	FINISHED GRADE	ORIGINAL GROUND	HORIZONTAL CURVATURE	VERTICAL CURVATURE	SUPERELEVATION
24+700	1360.744	1359.906			
	1360.828	1361.684			
	1361.749	1362.824			
	1362.670	1363.564			
	1363.591	1364.502			
	1364.512	1365.377			
	1365.463	1366.160			
	1366.415	1366.951			
	1367.366	1367.449			
	1368.318	1367.954			
	1369.269	1368.367			
	1370.294	1369.052			
	1370.393	1369.095			
	1369.887	1369.046			
	1369.328	1368.904			
	1368.769	1368.670			
	1367.699	1368.344			
	1366.528	1367.925			
	1365.358	1367.413			
	1364.530	1366.810			
	1363.707	1366.113			
	1362.884	1365.325			
	1362.055	1364.443			
	1361.193	1363.470			
	1360.552	1362.404			
	1359.824	1361.268			
	1358.915	1360.128			
	1358.007	1358.988			
	1357.098	1357.848			
	1356.928	1356.708			
	1354.755	1355.568			
	1353.581	1354.428			
	1352.407	1353.288			
	1351.233	1352.148			

STRAIGHT

LVC = 450.00 m

g = 4.700%

g = -5.700%

--- NG ---

THE BASIC DESIGN STUDY ON CONSTRUCTION OF EASTERN ARTERIAL ROAD IN MONGOLIA	
JAPAN INTERNATIONAL COOPERATION AGENCY (JICA)	DEPARTMENT OF ROADS, MINISTRY OF INFRASTRUCTURE, THE GOVERNMENT OF MONGOLIA
PACIFIC CONSULTANTS INTERNATIONAL JAPAN OVERSEAS CONSULTANTS	
Drawing title	Sheet No.
PLAN AND PROFILE (STA.24+700 TO STA.25+400) (STAGE-1)	
Scale	AS SHOWN
C-13 19/21	

図 3-2-3-15 全体平面・縦断面 (Section II 新設区間 Sta.24+700-Sta.25+400)