

CROSS SECTION TYPE	STATION	GROUND HEIGHT	PROPOSED HEIGHT	VERTICAL ALIGNMENT
TYPE 6	46+900	7.89	9.48	10.100
	46+920	7.83	10.005	
	46+940	7.82	10.005	
	46+960	7.73	9.948	
	46+980	7.78	9.850	
	47+000	7.86	9.750	
	47+020	7.89	9.650	
	47+040	7.92	9.550	
	47+060	7.95	9.464	
	47+080	7.98	9.406	
TYPE 6	47+100	7.94	9.377	
	47+120	7.89	9.372	
	47+140	7.96	9.371	
	47+160	8.05	9.370	
	47+180	8.04	9.368	
	47+200	8.08	9.367	
	47+220	8.08	9.366	
	47+240	8.05	9.365	
	47+260	7.94	9.363	
	47+280	7.88	9.362	
TYPE 6	47+300	8.00	9.361	
	47+320	8.06	9.360	
	47+340	8.08	9.358	
	47+360	8.13	9.357	
	47+380	8.21	9.356	
	47+400	8.23	9.355	
	47+420	8.20	9.353	
	47+440	8.22	9.352	
	47+460	8.17	9.351	
	47+480	8.09	9.350	
TYPE 6	47+500	8.07	9.348	
	47+520	8.10	9.347	
	47+540	8.14	9.346	
	47+560	8.19	9.345	
	47+580	8.20	9.343	
	47+600	8.26	9.342	

MINISTRY OF PUBLIC WORKS AND TRANSPORT (MPWT)

THE PROJECT FOR THE IMPROVEMENT OF NATIONAL ROAD NO.1 (PHNOM PENH-NEAK LOUENG SECTION) IN THE KINGDOM OF CAMBODIA

JAPAN INTERNATIONAL COOPERATION AGENCY KATAHIRA & ENGINEERS INTERNATIONAL CTI ENGINEERING INTERNATIONAL CO.,LTD

TITLE : PLAN AND PROFILE (STA.47+900—STA.47+600)

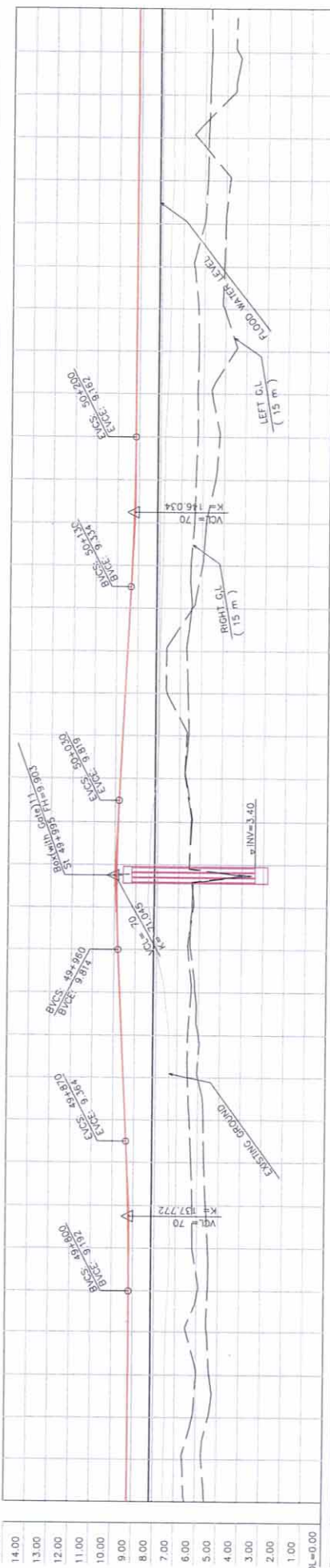
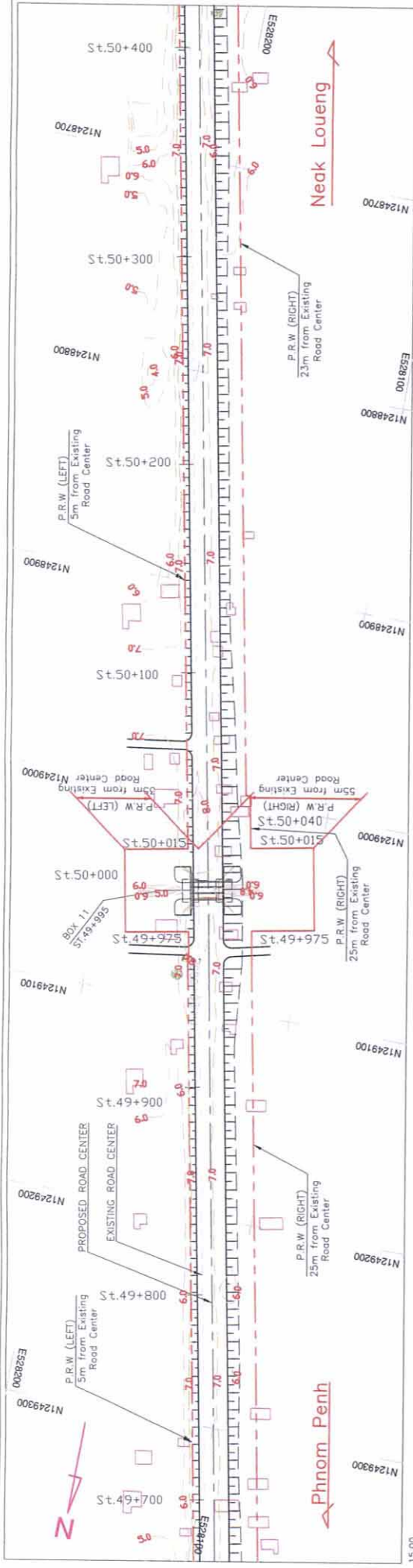
SCALE H=1/2000 V=1/200

Drawing No. Sheet No. PL-68

TYPE 6

HORIZONTAL CURVATURE R=∞ L=1999.713

SUPER-ELEVATION NG



CROSS SECTION TYPE	SUPER-ELEVATION	HORIZONTAL ALIGNMENT	STATION	GROUND HEIGHT	PAVEMENT HEIGHT	VERTICAL ALIGNMENT
TYPE-6			49+700	7.51		9.200
			49+720	7.48		9.198
			49+740	7.45		9.197
			49+760	7.47		9.195
			49+780	7.43		9.193
			49+800	7.33		9.192
			49+820	7.28		9.205
			49+840	7.30		9.247
			49+860	7.32		9.318
			49+880	7.37		9.414
			49+900	7.36		9.514
			49+920	7.39		9.614
			49+940	7.50		9.714
			49+960	8.01		9.814
			49+980	8.40		9.866
			50+000	8.37		9.901
			50+020	8.31		9.861
			50+040	8.04		9.771
			50+060	7.96		9.674
			50+080	7.95		9.576
			50+100	7.92		9.479
			50+120	7.90		9.382
			50+140	7.84		9.289
			50+160	7.81		9.219
			50+180	7.79		9.177
			50+200	7.78		9.162
			50+220	7.68		9.161
			50+240	7.61		9.160
			50+260	7.57		9.158
			50+280	7.60		9.157
			50+300	7.55		9.156
			50+320	7.47		9.155
			50+340	7.48		9.154
			50+360	7.49		9.152
			50+380	7.48		9.151
			50+400	7.48		9.150

MINISTRY OF PUBLIC WORKS AND TRANSPORT (MPWT)

THE PROJECT FOR THE IMPROVEMENT OF NATIONAL ROAD NO.1 (PHNOM PENH-NEAK LOUENG SECTION) IN THE KINGDOM OF CAMBODIA

JAPAN INTERNATIONAL COOPERATION AGENCY KATAHIRA & ENGINEERS INTERNATIONAL CTI ENGINEERING INTERNATIONAL CO.,LTD

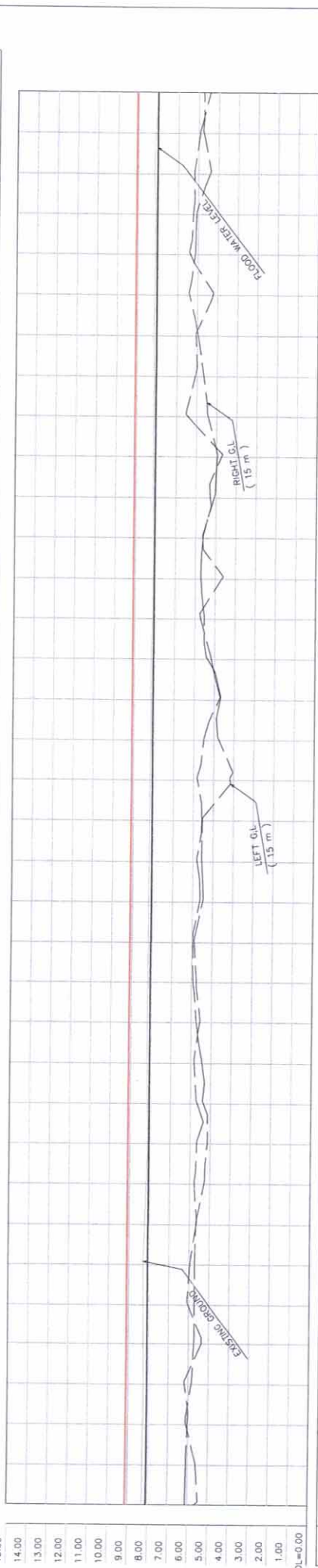
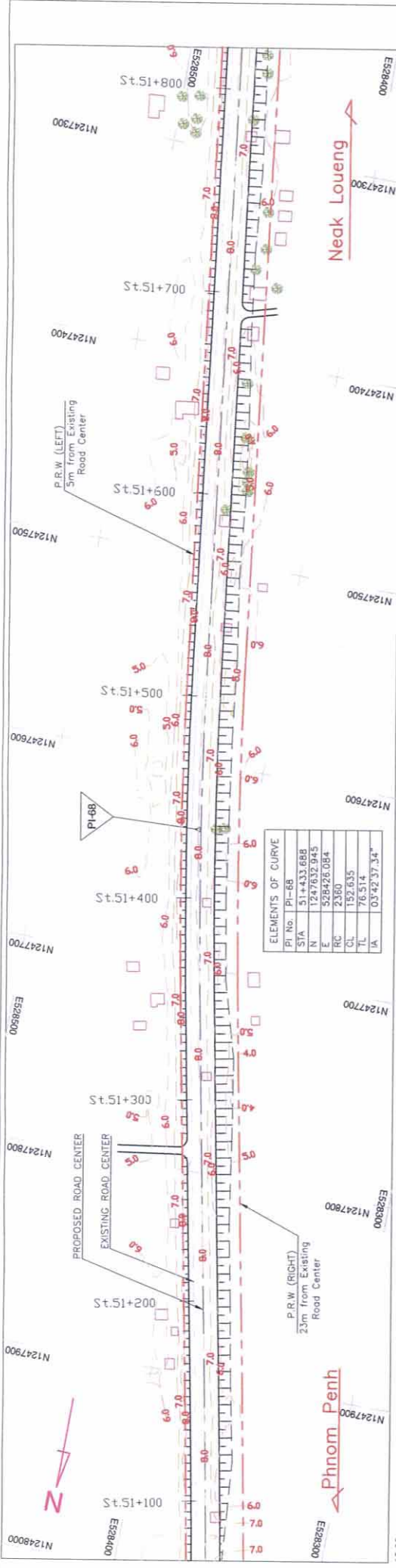
TITLE : PLAN AND PROFILE (STA. 49+700 - STA. 50+400)

SCALE H=1/2000 V=1/200

Drawing No. PL-72

Sheet No. PL-72

TYPE-6



TYPE	SECTION	ELEVATION	STATION	GROUND HEIGHT	PAVEMENT HEIGHT	VERTICAL ALIGNMENT
TYPE-6			51+100	8.26	9.108	
			51+120	8.26	9.107	
			51+140	8.23	9.106	
			51+160	8.23	9.105	
			51+180	8.26	9.104	
			51+200	8.26	9.102	
			51+220	8.29	9.101	
			51+240	8.23	9.100	
			51+260	8.17	9.099	
			51+280	8.12	9.098	
			51+300	8.15	9.096	
			51+320	8.16	9.095	
			51+340	8.18	9.094	
			51+360	8.16	9.093	
			51+380	8.18	9.092	
			51+400	8.17	9.090	
			51+420	8.18	9.089	
			51+440	8.17	9.088	
			51+460	8.17	9.087	
			51+480	8.14	9.086	
			51+500	8.15	9.085	
			51+520	8.16	9.083	
			51+540	8.11	9.082	
			51+560	8.10	9.081	
			51+580	8.10	9.080	
			51+600	8.12	9.079	
			51+620	8.14	9.077	
			51+640	8.13	9.076	
			51+660	8.13	9.075	
			51+680	8.17	9.074	
			51+700	8.15	9.073	
			51+720	8.14	9.071	
			51+740	8.12	9.070	
			51+760	8.19	9.069	
			51+780	8.13	9.068	
			51+800	8.06	9.067	

Horizontal Curve Data:
 BC: $R_c=2360$, $L_c=152.927$
 EC: $R_c=660.911$, $L_c=660.911$
 NC: $R_c=1987.000$, $L_c=1987.000$

MINISTRY OF PUBLIC WORKS AND TRANSPORT (MPWT)

THE PROJECT FOR THE IMPROVEMENT OF NATIONAL ROAD NO.1 (PHNOM PENH-NEAK LOUENG SECTION) IN THE KINGDOM OF CAMBODIA

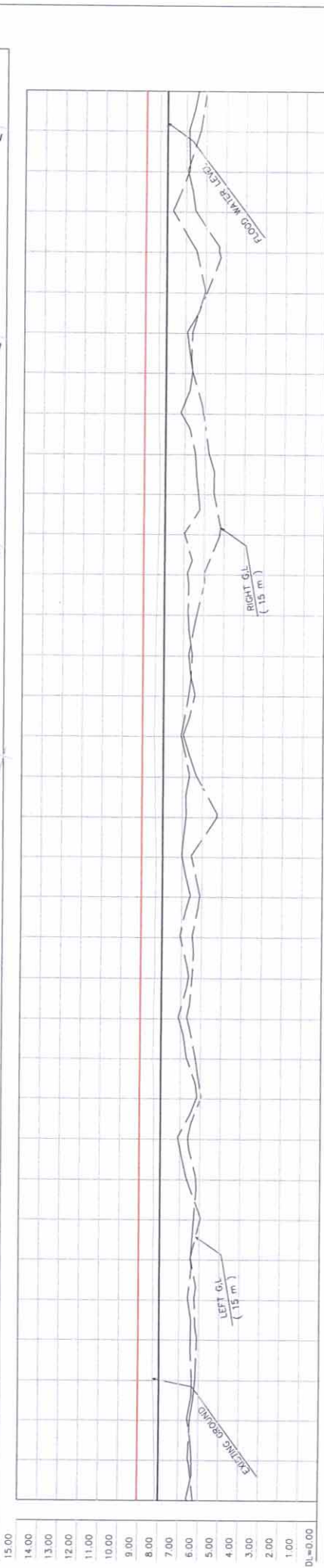
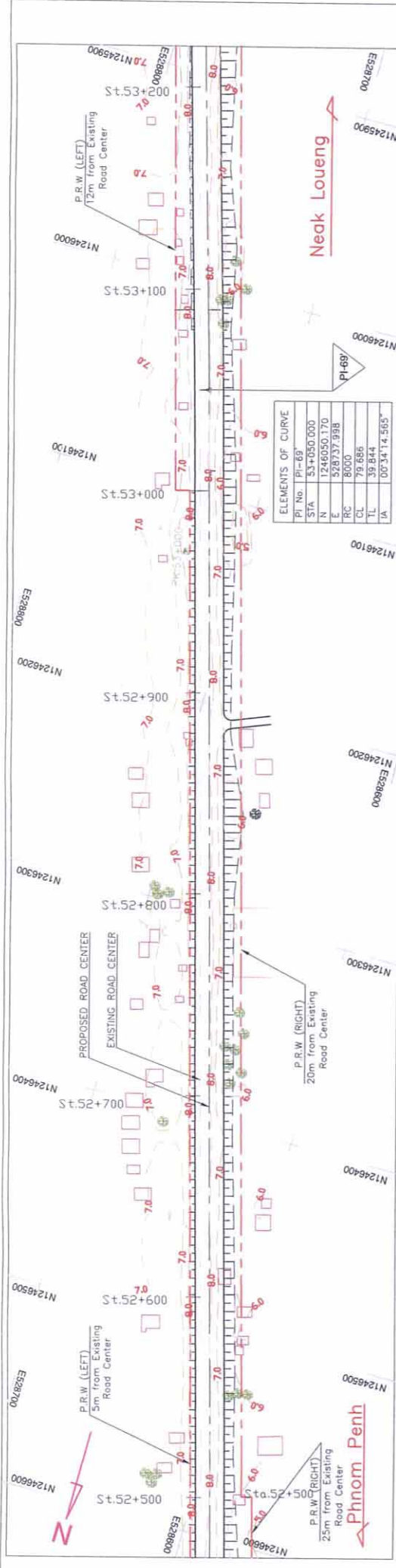
JAPAN INTERNATIONAL COOPERATION AGENCY KATAHIRA & ENGINEERS INTERNATIONAL CTI ENGINEERING INTERNATIONAL CO.,LTD

TITLE : PLAN AND PROFILE (STA.51+100 – STA.51+800)

SCALE
 H= 1/2000
 V= 1/200

Drawing No.
 PL-74

Sheet No.
 PL-74



VERTICAL ALIGNMENT	STATION	GROUND HEIGHT	PAVEMENT HEIGHT
EXISTING GROUND	52+500	8.13	9.025
EXISTING GROUND	52+520	8.17	9.024
EXISTING GROUND	52+540	8.22	9.023
EXISTING GROUND	52+560	8.30	9.021
EXISTING GROUND	52+580	8.29	9.020
EXISTING GROUND	52+600	8.29	9.019
EXISTING GROUND	52+620	8.32	9.018
EXISTING GROUND	52+640	8.27	9.017
EXISTING GROUND	52+660	8.31	9.015
EXISTING GROUND	52+680	8.30	9.013
EXISTING GROUND	52+700	8.30	9.013
EXISTING GROUND	52+720	8.36	9.012
EXISTING GROUND	52+740	8.35	9.011
EXISTING GROUND	52+760	8.31	9.010
EXISTING GROUND	52+780	8.32	9.008
EXISTING GROUND	52+800	8.29	9.007
EXISTING GROUND	52+820	8.28	9.006
EXISTING GROUND	52+840	8.33	9.005
EXISTING GROUND	52+860	8.35	9.004
EXISTING GROUND	52+880	8.41	9.002
EXISTING GROUND	52+900	8.38	9.001
EXISTING GROUND	52+920	8.37	9.000
EXISTING GROUND	52+940	8.34	8.999
EXISTING GROUND	52+960	8.30	8.998
EXISTING GROUND	52+980	8.25	8.996
EXISTING GROUND	53+000	8.21	8.995
EXISTING GROUND	53+020	8.23	8.994
EXISTING GROUND	53+040	8.30	8.993
EXISTING GROUND	53+060	8.30	8.992
EXISTING GROUND	53+080	8.33	8.990
EXISTING GROUND	53+100	8.29	8.989
EXISTING GROUND	53+120	8.28	8.988
EXISTING GROUND	53+140	8.29	8.987
EXISTING GROUND	53+160	8.31	8.986
EXISTING GROUND	53+180	8.31	8.985
EXISTING GROUND	53+200	8.28	8.983

MINISTRY OF PUBLIC WORKS AND TRANSPORT (MPWT)

THE PROJECT FOR THE IMPROVEMENT OF NATIONAL ROAD NO.1 (PHNOM PENH-NEAK LOUENG SECTION) IN THE KINGDOM OF CAMBODIA

JAPAN INTERNATIONAL COOPERATION AGENCY
KATAHIRA & ENGINEERS INTERNATIONAL
CTI ENGINEERING INTERNATIONAL CO.,LTD

TITLE : PLAN AND PROFILE (STA.52+500 - STA.53+200)

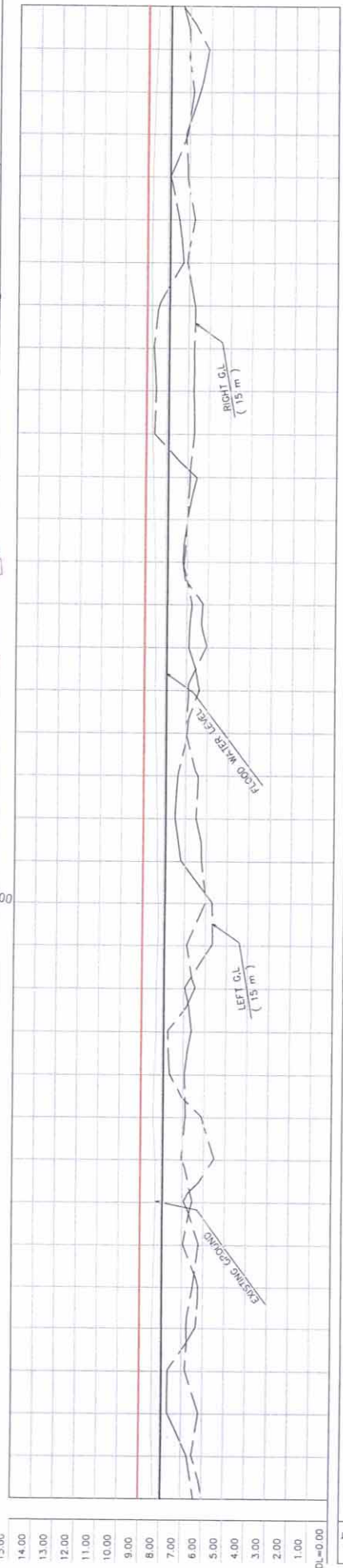
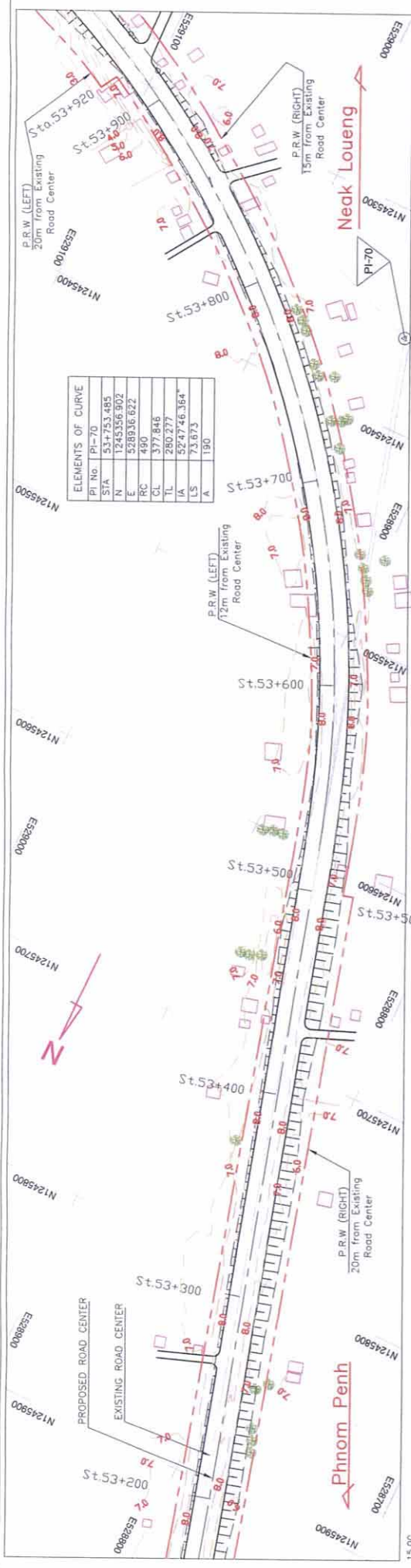
SCALE
H=1/2000
V=1/200

Drawing No. _____
Sheet No. PL-76

CROSS SECTION TYPE TYPE-6

SUPER-ELEVATION NC

HORIZONTAL CURVATURE
Rc=∞
L=1078.302



TYPE	CROSS SECTION	TYPE	TYPE-3	TYPE-3
ALIGNMENT	ALIGNMENT	ALIGNMENT	ALIGNMENT	ALIGNMENT
PAVEMENT HEIGHT	PAVEMENT HEIGHT	PAVEMENT HEIGHT	PAVEMENT HEIGHT	PAVEMENT HEIGHT
GROUND HEIGHT	GROUND HEIGHT	GROUND HEIGHT	GROUND HEIGHT	GROUND HEIGHT
STATION	STATION	STATION	STATION	STATION
HORIZONTAL	HORIZONTAL	HORIZONTAL	HORIZONTAL	HORIZONTAL
CLIMATE	CLIMATE	CLIMATE	CLIMATE	CLIMATE
SURFACE ELEVATION	SURFACE ELEVATION	SURFACE ELEVATION	SURFACE ELEVATION	SURFACE ELEVATION
CROSS SECTION	CROSS SECTION	CROSS SECTION	CROSS SECTION	CROSS SECTION

MINISTRY OF PUBLIC WORKS AND TRANSPORT (MPWT)

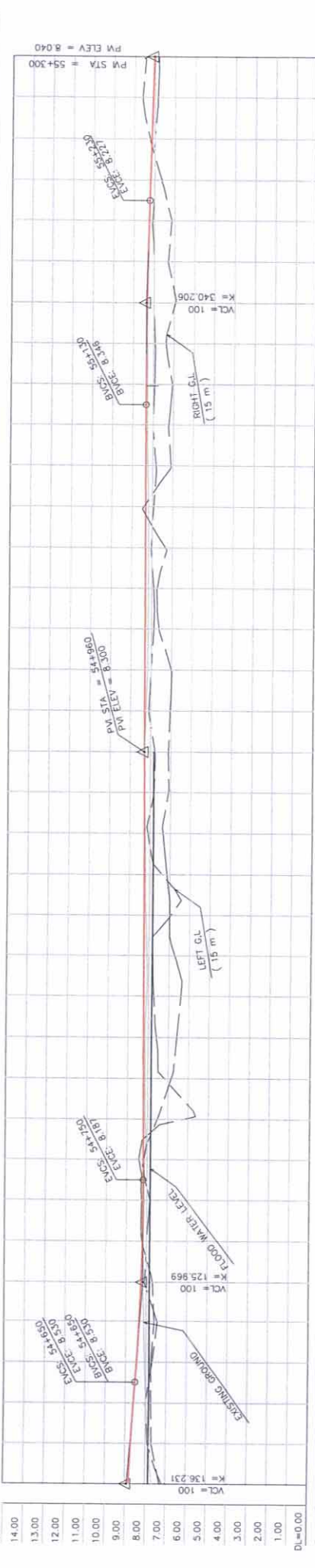
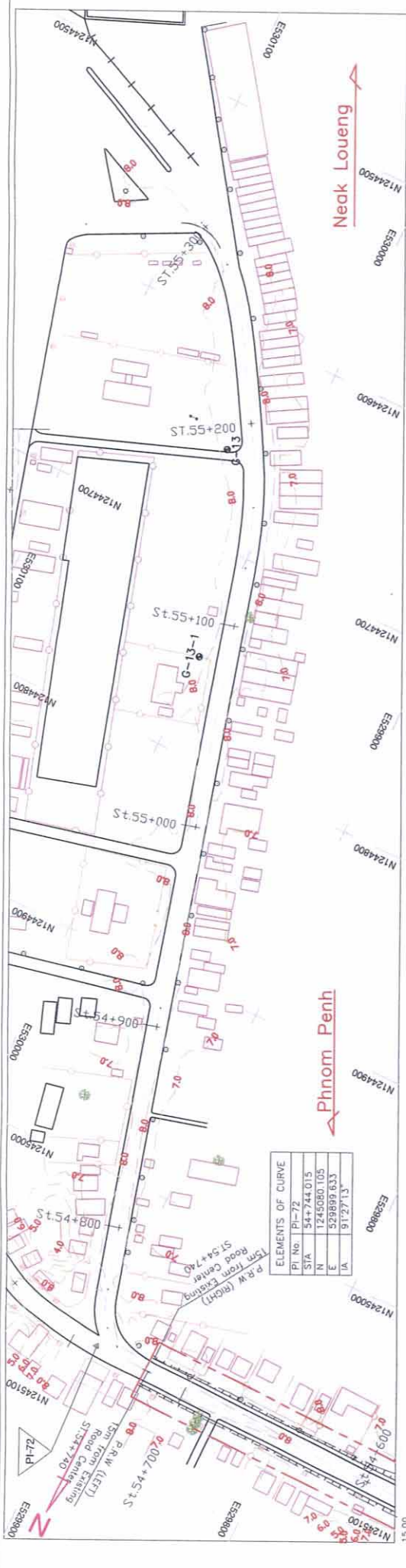
THE PROJECT FOR THE IMPROVEMENT OF NATIONAL ROAD NO.1 (PHNOM PENH-NEAK LOUENG SECTION) IN THE KINGDOM OF CAMBODIA

JAPAN INTERNATIONAL COOPERATION AGENCY KATAHIRA & ENGINEERS INTERNATIONAL CTI ENGINEERING INTERNATIONAL CO.,LTD

TITLE : PLAN AND PROFILE (STA.53+200 - STA.53+900)

SCALE: H=1/2000 V=1/200

Drawing No. Sheet No. PL-77



CROSS SECTION TYPE	TYPE-3	TYPE-7	TYPE-7	
ELEVATION	3.00 -3.00 54+502		NC	
HORIZONTAL CURVATURE				
STATION	54+600 54+620 54+640 54+660 54+680 54+700 54+720 54+740 54+760 54+780 54+800 54+820 54+840 54+860 54+880 54+900 54+920 54+940 54+960 54+980 55+000 55+020 55+040 55+060 55+080 55+100 55+120 55+140 55+160 55+180 55+200 55+220 55+240 55+260 55+280 55+300	8.040 8.040 8.093 8.147 8.200 8.252 8.293 8.344 8.398 8.444 8.498 8.544 8.590 8.636 8.682 8.728 8.774 8.820 8.866 8.912 8.958 9.004 9.050 9.096 9.142 9.188 9.234 9.280 9.326 9.372 9.418 9.464 9.510 9.556 9.602 9.648 9.694 9.740 9.786 9.832 9.878 9.924 9.970 10.016 10.062 10.108 10.154 10.200 10.246 10.292 10.338 10.384 10.430 10.476 10.522 10.568 10.614 10.660 10.706 10.752 10.798 10.844 10.890 10.936 10.982 11.028 11.074 11.120 11.166 11.212 11.258 11.304 11.350 11.396 11.442 11.488 11.534 11.580 11.626 11.672 11.718 11.764 11.810 11.856 11.902 11.948 12.000	8.300 8.300 8.289 8.278 8.268 8.257 8.246 8.235 8.225 8.214 8.203 8.192 8.186 8.206 8.259 8.344 8.460 8.600 8.719 8.808 8.900 9.000 9.100 9.200 9.300 9.400 9.500 9.600 9.700 9.800 9.900 10.000 10.100 10.200 10.300 10.400 10.500 10.600 10.700 10.800 10.900 11.000 11.100 11.200 11.300 11.400 11.500 11.600 11.700 11.800 11.900 12.000	8.040 8.040 8.093 8.147 8.200 8.252 8.293 8.344 8.398 8.444 8.498 8.544 8.590 8.636 8.682 8.728 8.774 8.820 8.866 8.912 8.958 9.004 9.050 9.096 9.142 9.188 9.234 9.280 9.326 9.372 9.418 9.464 9.510 9.556 9.602 9.648 9.694 9.740 9.786 9.832 9.878 9.924 9.970 10.016 10.062 10.108 10.154 10.200 10.246 10.292 10.338 10.384 10.430 10.476 10.522 10.568 10.614 10.660 10.706 10.752 10.798 10.844 10.890 10.936 10.982 11.028 11.074 11.120 11.166 11.212 11.258 11.304 11.350 11.396 11.442 11.488 11.534 11.580 11.626 11.672 11.718 11.764 11.810 11.856 11.902 11.948 12.000

