

| CROSS SECTION TYPE | STATION | GROUND HEIGHT | PROPOSED HEIGHT | VERTICAL ALIGNMENT |
|--------------------|---------|---------------|-----------------|--------------------|
| TYPE 6 | 46+900 | 7.89 | 9.48 | 10.100 |
| | 46+920 | 7.83 | 10.005 | 10.005 |
| | 46+960 | 7.73 | 9.948 | 9.948 |
| | 46+980 | 7.78 | 9.850 | 9.850 |
| | 47+000 | 7.86 | 9.750 | 9.750 |
| | 47+020 | 7.89 | 9.650 | 9.650 |
| | 47+040 | 7.92 | 9.550 | 9.550 |
| | 47+060 | 7.95 | 9.464 | 9.464 |
| | 47+080 | 7.98 | 9.406 | 9.406 |
| | 47+100 | 7.94 | 9.377 | 9.377 |
| | 47+120 | 7.89 | 9.372 | 9.372 |
| | 47+140 | 7.96 | 9.371 | 9.371 |
| | 47+160 | 8.05 | 9.370 | 9.370 |
| | 47+180 | 8.04 | 9.368 | 9.368 |
| | 47+200 | 8.08 | 9.367 | 9.367 |
| | 47+220 | 8.08 | 9.366 | 9.366 |
| | 47+240 | 8.05 | 9.365 | 9.365 |
| | 47+260 | 7.94 | 9.363 | 9.363 |
| | 47+280 | 7.88 | 9.362 | 9.362 |
| | 47+300 | 8.00 | 9.361 | 9.361 |
| | 47+320 | 8.06 | 9.360 | 9.360 |
| | 47+340 | 8.08 | 9.358 | 9.358 |
| | 47+360 | 8.13 | 9.357 | 9.357 |
| | 47+380 | 8.21 | 9.356 | 9.356 |
| | 47+400 | 8.23 | 9.355 | 9.355 |
| | 47+420 | 8.20 | 9.353 | 9.353 |
| | 47+440 | 8.22 | 9.352 | 9.352 |
| | 47+460 | 8.17 | 9.351 | 9.351 |
| | 47+480 | 8.09 | 9.350 | 9.350 |
| | 47+500 | 8.07 | 9.348 | 9.348 |
| | 47+520 | 8.10 | 9.347 | 9.347 |
| | 47+540 | 8.14 | 9.346 | 9.346 |
| | 47+560 | 8.19 | 9.345 | 9.345 |
| | 47+580 | 8.20 | 9.343 | 9.343 |
| | 47+600 | 8.26 | 9.342 | 9.342 |

MINISTRY OF PUBLIC WORKS AND TRANSPORT (MPWT)

THE PROJECT FOR THE IMPROVEMENT OF NATIONAL ROAD NO.1 (PHNOM PENH-NEAK LOUENG SECTION) IN THE KINGDOM OF CAMBODIA

JAPAN INTERNATIONAL COOPERATION AGENCY KATAHIRA & ENGINEERS INTERNATIONAL CTI ENGINEERING INTERNATIONAL CO.,LTD

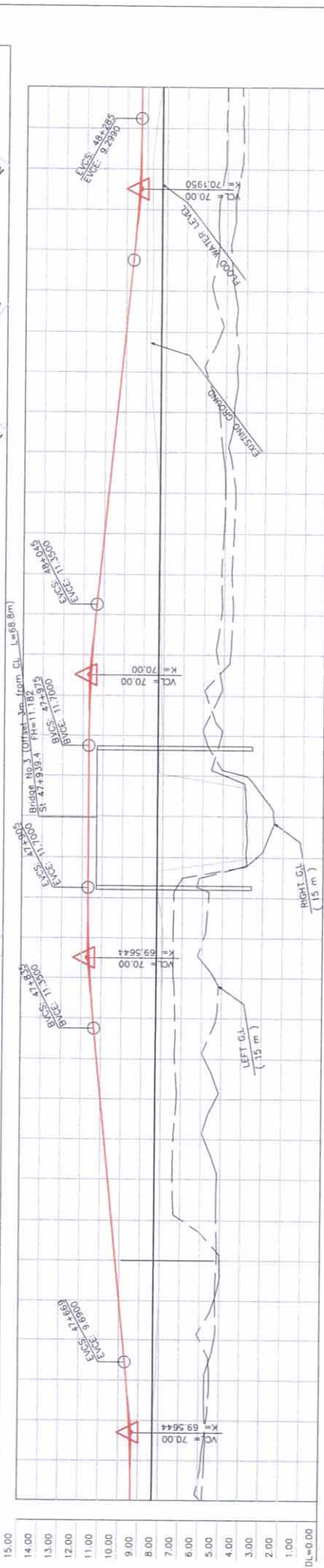
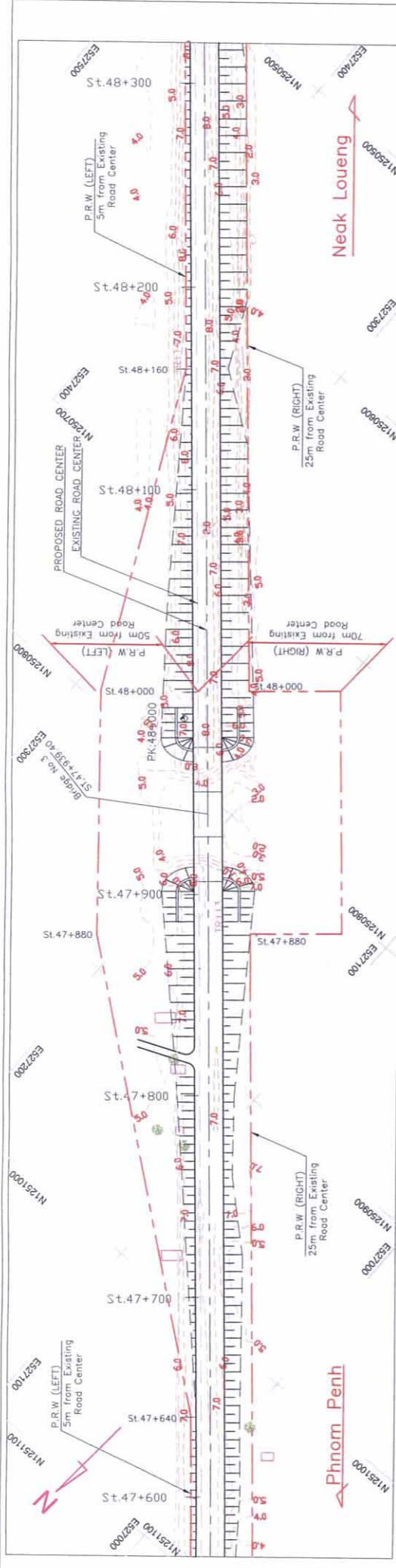
TITLE : PLAN AND PROFILE (STA.47+900—STA.47+600)

SCALE H=1/2000 V=1/200

Drawing No. PL-68

Sheet No. PL-68

TYPE 6



| CROSS SECTION TYPE | TYPE 6 | |
|----------------------|------------|--------|
| SURF-ELEVATION | NG | |
| HORIZONTAL CURVATURE | R=∞ | |
| STATION | L=1999.713 | |
| GROUND HEIGHT | | |
| PAVEMENT HEIGHT | | |
| VERTICAL ALIGNMENT | | |
| 9.342 | 9.342 | 9.342 |
| 9.373 | 9.373 | 9.373 |
| 9.460 | 9.460 | 9.460 |
| 9.606 | 9.606 | 9.606 |
| 9.806 | 9.806 | 9.806 |
| 10.000 | 10.000 | 10.000 |
| 10.200 | 10.200 | 10.200 |
| 10.400 | 10.400 | 10.400 |
| 10.600 | 10.600 | 10.600 |
| 10.800 | 10.800 | 10.800 |
| 11.000 | 11.000 | 11.000 |
| 11.200 | 11.200 | 11.200 |
| 11.398 | 11.398 | 11.398 |
| 11.555 | 11.555 | 11.555 |
| 11.655 | 11.655 | 11.655 |
| 11.700 | 11.700 | 11.700 |
| 11.700 | 11.700 | 11.700 |
| 11.698 | 11.698 | 11.698 |
| 11.555 | 11.555 | 11.555 |
| 11.398 | 11.398 | 11.398 |
| 11.200 | 11.200 | 11.200 |
| 11.000 | 11.000 | 11.000 |
| 10.800 | 10.800 | 10.800 |
| 10.600 | 10.600 | 10.600 |
| 10.400 | 10.400 | 10.400 |
| 10.200 | 10.200 | 10.200 |
| 10.000 | 10.000 | 10.000 |
| 9.800 | 9.800 | 9.800 |
| 9.602 | 9.602 | 9.602 |
| 9.445 | 9.445 | 9.445 |
| 9.344 | 9.344 | 9.344 |
| 9.301 | 9.301 | 9.301 |
| 9.299 | 9.299 | 9.299 |

MINISTRY OF PUBLIC WORKS AND TRANSPORT (MPWT)

THE PROJECT FOR THE IMPROVEMENT OF NATIONAL ROAD NO.1 (PHNOM PENH-NEAK LOUENG SECTION) IN THE KINGDOM OF CAMBODIA

JAPAN INTERNATIONAL COOPERATION AGENCY KATAHIRA & ENGINEERS INTERNATIONAL CTI ENGINEERING INTERNATIONAL CO.,LTD

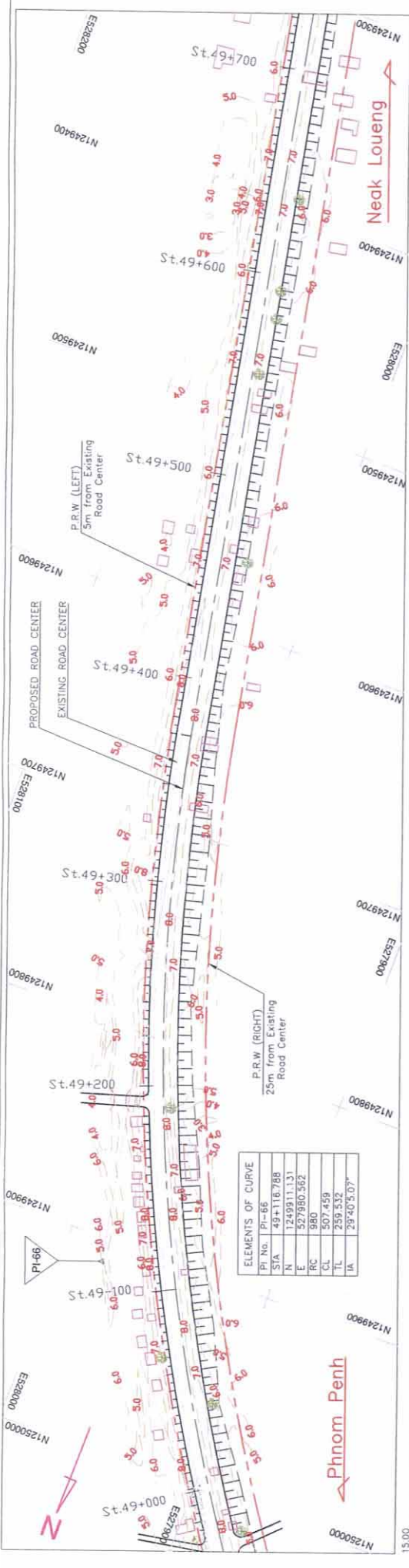
TITLE : PLAN AND PROFILE (STA.47+600--STA.48+300)

SCALE H=1/2000 V=1/200

Drawing No. PL-69

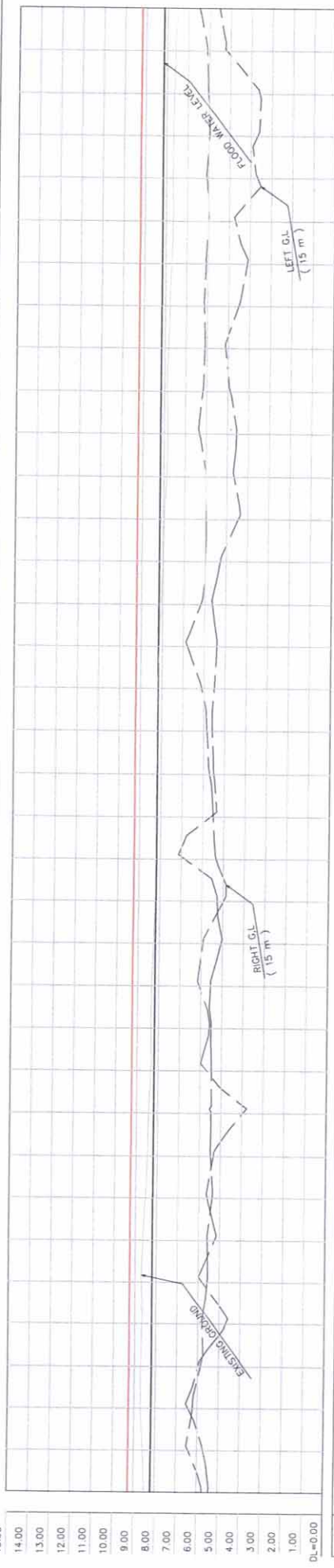
Sheet No. PL-69

TYPE 6



ELEMENTS OF CURVE

| | |
|--------|-------------|
| PI No. | PI-66 |
| STA | 49+116.788 |
| N | 1249911.131 |
| E | 527980.562 |
| RC | 980 |
| CL | 507.459 |
| TL | 259.532 |
| TA | 29.405.07° |



| CROSS SECTION TYPE | STATION | GROUND HEIGHT | PAVEMENT HEIGHT | VERTICAL ALIGNMENT |
|--------------------|---------|---------------|-----------------|--------------------|
| TYPE-6 | 9+257 | 8.48 | 9.255 | TYPE-6 |
| | 9+258 | 8.57 | 9.253 | |
| | 9+259 | 8.68 | 9.252 | |
| | 9+260 | 8.64 | 9.250 | |
| | 9+261 | 8.68 | 9.248 | |
| | 9+262 | 8.64 | 9.247 | |
| | 9+263 | 8.53 | 9.245 | |
| | 9+264 | 8.46 | 9.244 | |
| | 9+265 | 8.42 | 9.242 | |
| | 9+266 | 8.32 | 9.240 | |
| TYPE-6 | 9+267 | 8.34 | 9.239 | |
| | 9+268 | 8.33 | 9.237 | |
| | 9+269 | 8.26 | 9.235 | |
| | 9+270 | 8.23 | 9.234 | |
| | 9+271 | 8.21 | 9.232 | |
| | 9+272 | 8.21 | 9.229 | |
| | 9+273 | 8.21 | 9.227 | |
| | 9+274 | 8.19 | 9.226 | |
| | 9+275 | 8.13 | 9.224 | |
| | 9+276 | 8.07 | 9.223 | |
| TYPE-6 | 9+277 | 8.00 | 9.221 | |
| | 9+278 | 7.94 | 9.219 | |
| | 9+279 | 7.85 | 9.218 | |
| | 9+280 | 7.81 | 9.216 | |
| | 9+281 | 7.87 | 9.214 | |
| | 9+282 | 7.82 | 9.213 | |
| | 9+283 | 7.77 | 9.211 | |
| | 9+284 | 7.71 | 9.210 | |
| | 9+285 | 7.65 | 9.208 | |
| | 9+286 | 7.67 | 9.206 | |
| TYPE-6 | 9+287 | 7.67 | 9.205 | |
| | 9+288 | 7.64 | 9.203 | |
| | 9+289 | 7.61 | 9.202 | |
| | 9+290 | 7.51 | 9.200 | |
| | 9+291 | 7.51 | 9.200 | |
| | 9+292 | 7.51 | 9.200 | |
| | 9+293 | 7.51 | 9.200 | |
| | 9+294 | 7.51 | 9.200 | |
| | 9+295 | 7.51 | 9.200 | |
| | 9+296 | 7.51 | 9.200 | |

MINISTRY OF PUBLIC WORKS AND TRANSPORT (MPWT)

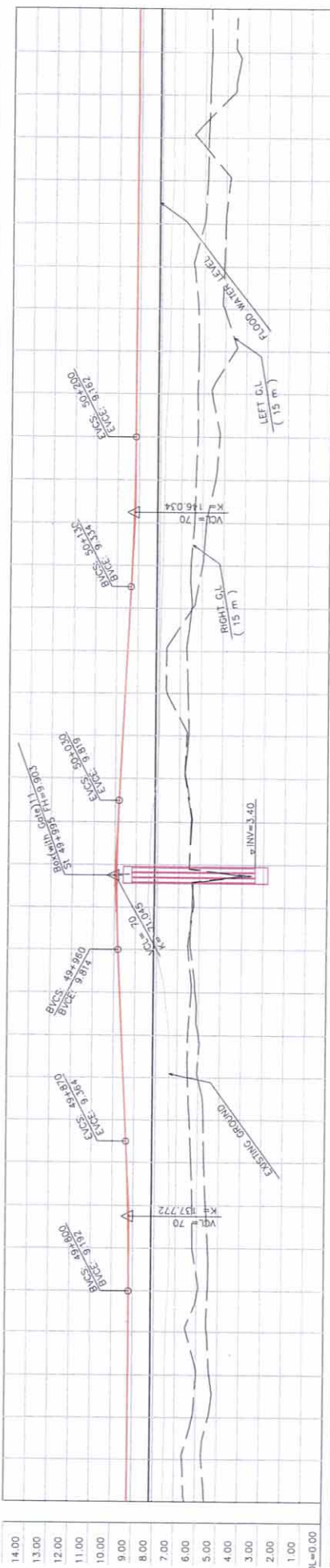
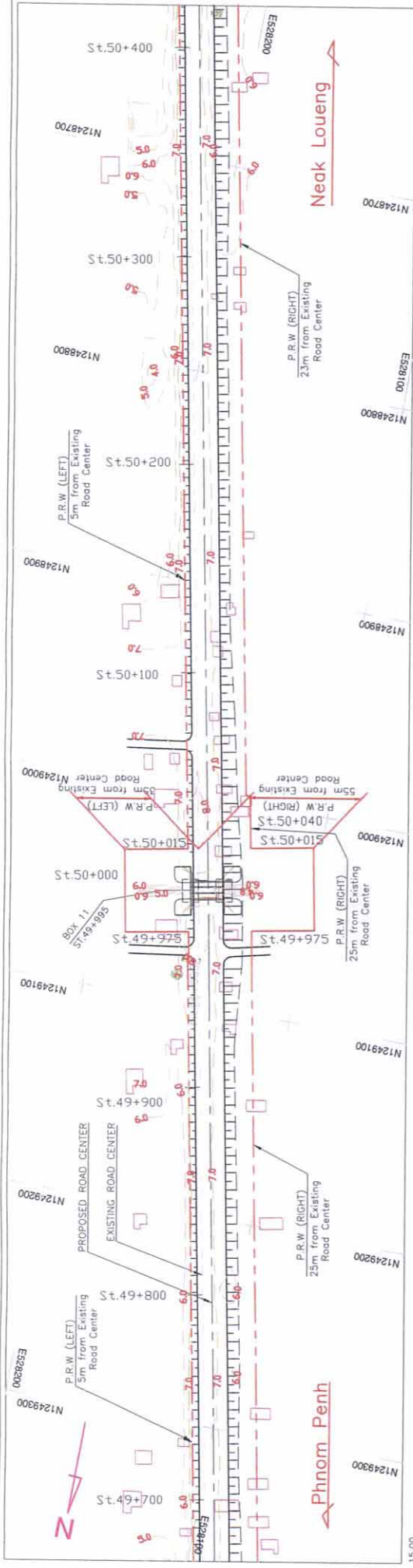
THE PROJECT FOR THE IMPROVEMENT OF NATIONAL ROAD NO.1 (PHNOM PENH-NEAK LOUENG SECTION) IN THE KINGDOM OF CAMBODIA

JAPAN INTERNATIONAL COOPERATION AGENCY KATAHIRA & ENGINEERS INTERNATIONAL CTI ENGINEERING INTERNATIONAL CO.,LTD

TITLE : PLAN AND PROFILE (STA.49+000 – STA.49+700)

SCALE H=1/2000 V=1/200

Drawing No. Sheet No. PL-71



| CROSS SECTION TYPE | TYPE-6 | |
|----------------------|--------------------|-----------------|
| SUPER-ELEVATION | NG | |
| HORIZONTAL CURVATURE | Rc=∞ L=1987.000 | |
| STATION | GROUND HEIGHT | PAVEMENT HEIGHT |
| 49+700 | 7.51 | 9.200 |
| 49+720 | 7.48 | 9.198 |
| 49+740 | 7.45 | 9.197 |
| 49+760 | 7.47 | 9.195 |
| 49+780 | 7.43 | 9.193 |
| 49+800 | 7.33 | 9.192 |
| 49+820 | 7.28 | 9.205 |
| 49+840 | 7.30 | 9.247 |
| 49+860 | 7.32 | 9.318 |
| 49+880 | 7.37 | 9.414 |
| 49+900 | 7.36 | 9.514 |
| 49+920 | 7.39 | 9.614 |
| 49+940 | 7.50 | 9.714 |
| 49+960 | 8.01 | 9.814 |
| 49+980 | 8.40 | 9.866 |
| 50+000 | 8.37 | 9.901 |
| 50+020 | 8.31 | 9.861 |
| 50+040 | 8.04 | 9.771 |
| 50+060 | 7.96 | 9.674 |
| 50+080 | 7.95 | 9.576 |
| 50+100 | 7.92 | 9.479 |
| 50+120 | 7.90 | 9.382 |
| 50+140 | 7.84 | 9.289 |
| 50+160 | 7.81 | 9.219 |
| 50+180 | 7.79 | 9.177 |
| 50+200 | 7.78 | 9.162 |
| 50+220 | 7.68 | 9.161 |
| 50+240 | 7.61 | 9.160 |
| 50+260 | 7.57 | 9.158 |
| 50+280 | 7.60 | 9.157 |
| 50+300 | 7.55 | 9.156 |
| 50+320 | 7.47 | 9.155 |
| 50+340 | 7.48 | 9.154 |
| 50+360 | 7.49 | 9.152 |
| 50+380 | 7.48 | 9.151 |
| 50+400 | 7.48 | 9.150 |

MINISTRY OF PUBLIC WORKS AND TRANSPORT (MPWT)

THE PROJECT FOR THE IMPROVEMENT OF NATIONAL ROAD NO.1 (PHNOM PENH-NEAK LOUENG SECTION) IN THE KINGDOM OF CAMBODIA

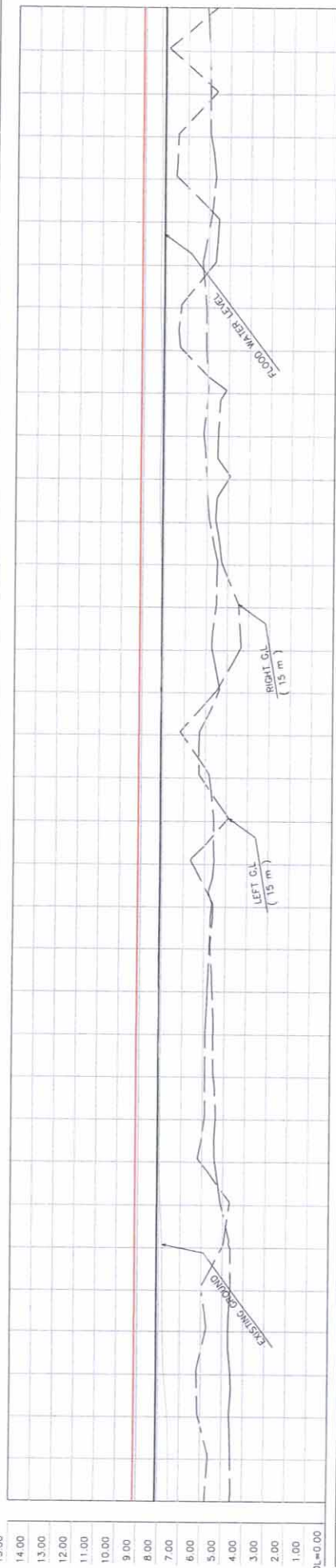
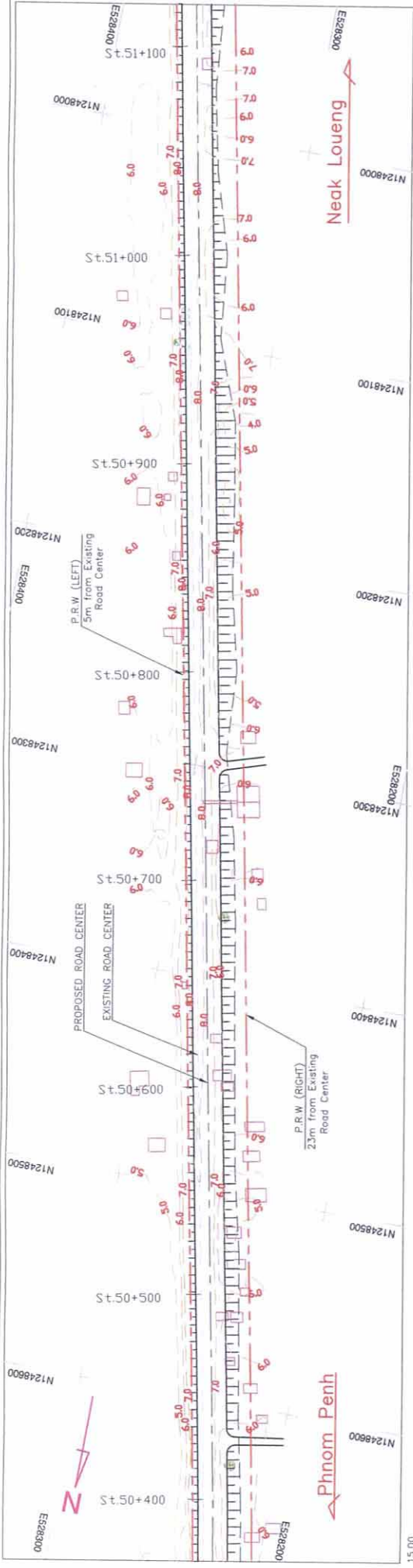
JAPAN INTERNATIONAL COOPERATION AGENCY KATAHIRA & ENGINEERS INTERNATIONAL CTI ENGINEERING INTERNATIONAL CO.,LTD

TITLE : PLAN AND PROFILE (STA.49+700 - STA.50+400)

SCALE H=1/2000 V=1/200

Drawing No. PL-72

Sheet No. PL-72



| VERTICAL ALIGNMENT | PAVEMENT HEIGHT | GROUND HEIGHT | STATION | HORIZONTAL CURVATURE | SUPER-ELEVATION | TYPE |
|--------------------|-----------------|---------------|---------|----------------------|-----------------|--------|
| 9.150 | 7.48 | 7.48 | -50+400 | | | TYPE-6 |
| 9.149 | 7.48 | 7.48 | -50+420 | | | |
| 9.148 | 7.55 | 7.55 | -50+440 | | | |
| 9.146 | 7.74 | 7.74 | -50+460 | | | |
| 9.145 | 7.79 | 7.79 | -50+480 | | | |
| 9.144 | 7.83 | 7.83 | -50+500 | | | |
| 9.143 | 7.84 | 7.84 | -50+520 | | | |
| 9.142 | 7.93 | 7.93 | -50+540 | | | |
| 9.140 | 8.03 | 8.03 | -50+560 | | | |
| 9.139 | 8.01 | 8.01 | -50+580 | | | |
| 9.138 | 8.04 | 8.04 | -50+600 | | | |
| 9.137 | 8.09 | 8.09 | -50+620 | | | |
| 9.136 | 8.12 | 8.12 | -50+640 | | | |
| 9.135 | 8.15 | 8.15 | -50+660 | | | |
| 9.133 | 8.14 | 8.14 | -50+680 | | | |
| 9.132 | 8.13 | 8.13 | -50+700 | | | |
| 9.131 | 8.13 | 8.13 | -50+720 | | | |
| 9.130 | 8.14 | 8.14 | -50+740 | | | |
| 9.129 | 8.14 | 8.14 | -50+760 | | | |
| 9.127 | 8.09 | 8.09 | -50+780 | | | |
| 9.126 | 8.12 | 8.12 | -50+800 | | | |
| 9.125 | 8.12 | 8.12 | -50+820 | | | |
| 9.124 | 8.13 | 8.13 | -50+840 | | | |
| 9.123 | 8.18 | 8.18 | -50+860 | | | |
| 9.121 | 8.22 | 8.22 | -50+880 | | | |
| 9.120 | 8.18 | 8.18 | -50+900 | | | |
| 9.119 | 8.16 | 8.16 | -50+920 | | | |
| 9.118 | 8.19 | 8.19 | -50+940 | | | |
| 9.117 | 8.24 | 8.24 | -50+960 | | | |
| 9.115 | 8.25 | 8.25 | -50+980 | | | |
| 9.114 | 8.22 | 8.22 | -51+000 | | | |
| 9.113 | 8.19 | 8.19 | -51+020 | | | |
| 9.112 | 8.21 | 8.21 | -51+040 | | | |
| 9.111 | 8.25 | 8.25 | -51+060 | | | |
| 9.110 | 8.27 | 8.27 | -51+080 | | | |
| 9.108 | 8.26 | 8.26 | -51+100 | | | |

MINISTRY OF PUBLIC WORKS AND TRANSPORT (MPWT)

THE PROJECT FOR THE IMPROVEMENT OF NATIONAL ROAD NO.1 (PHNOM PENH-NEAK LOUENG SECTION) IN THE KINGDOM OF CAMBODIA

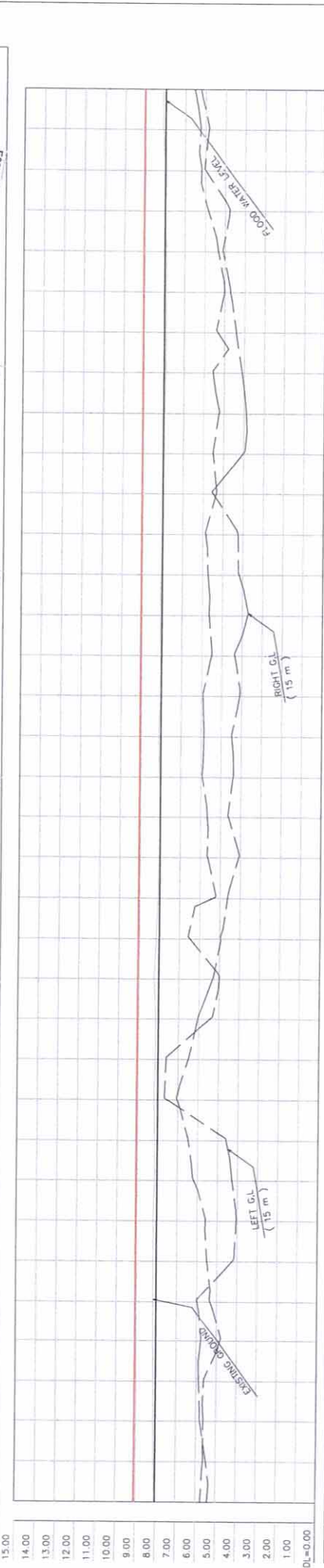
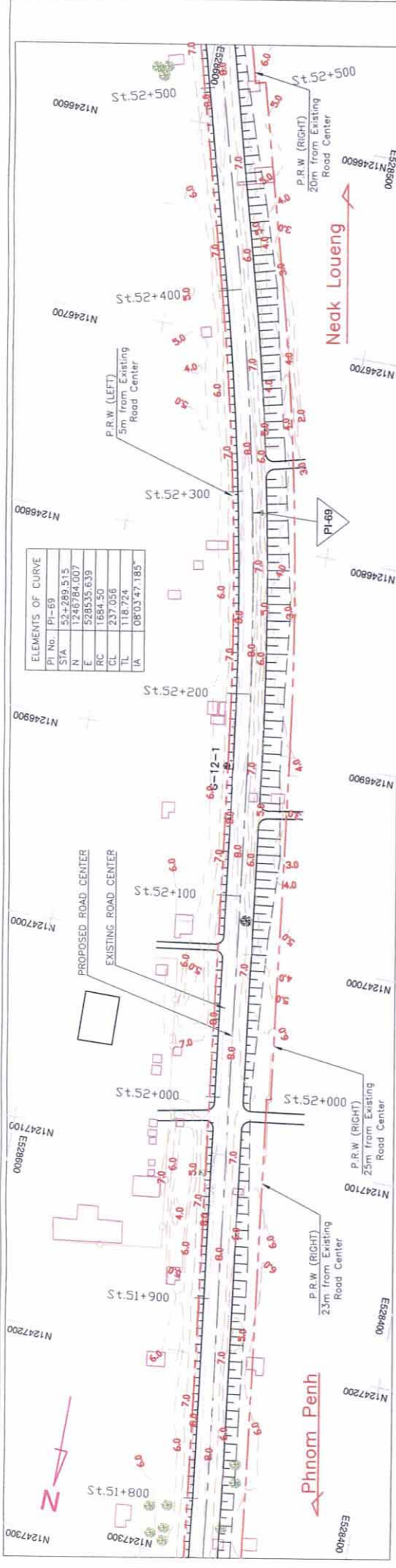
JAPAN INTERNATIONAL COOPERATION AGENCY KATAHIRA & ENGINEERS INTERNATIONAL CTI ENGINEERING INTERNATIONAL CO.,LTD

TITLE : PLAN AND PROFILE (STA.50+400 - STA.51+100)

SCALE H=1/2000 V=1/200

Drawing No. Sheet No. PL-73

TYPE-6



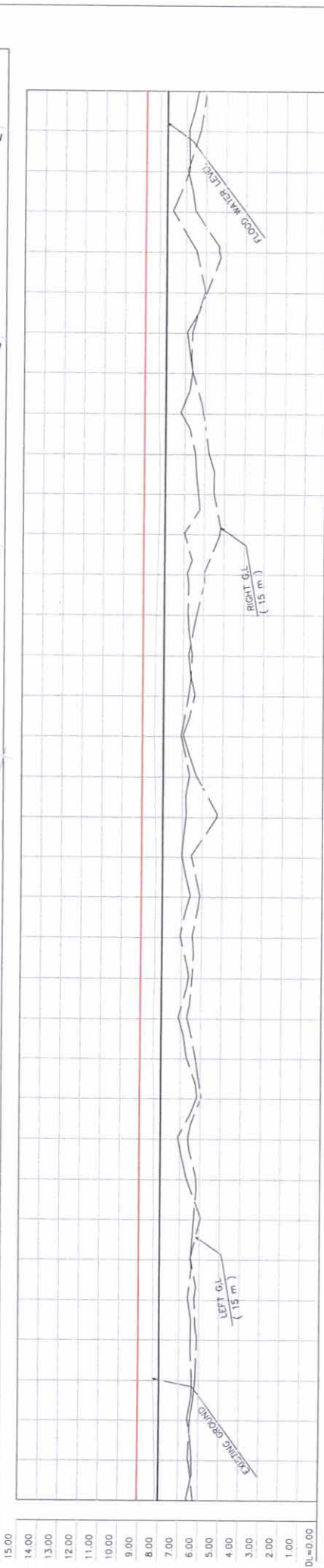
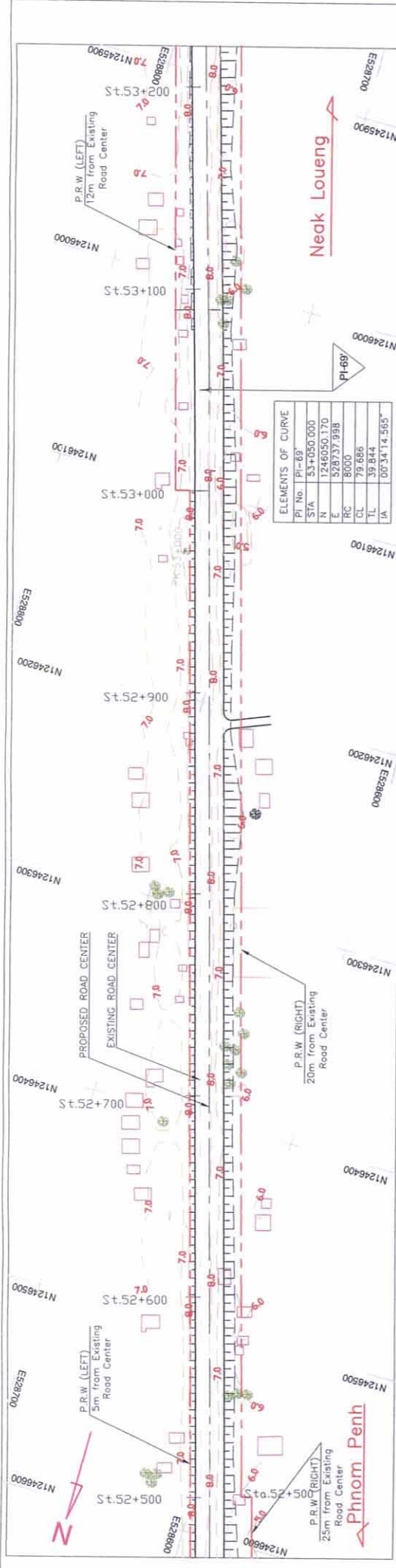
| TYPE | CROSS SECTION | ELEVATION | STATION | GROUND HEIGHT | PAVEMENT HEIGHT | VERTICAL ALIGNMENT |
|--------|---------------|-----------|---------|---------------|-----------------|---------------------------------|
| TYPE-9 | TYPE-6 | 3.00 | 52+800 | 8.06 | 9.067 | $R_c = 1680$ $L_c = 236.422$ |
| | | 3.00 | 51+800 | 8.10 | 9.065 | |
| | | 3.00 | 51+840 | 8.14 | 9.064 | |
| | | 3.00 | 51+860 | 8.14 | 9.063 | |
| | | 3.00 | 51+880 | 8.17 | 9.062 | |
| | | 3.00 | 51+900 | 8.17 | 9.061 | |
| | | 3.00 | 51+920 | 8.16 | 9.060 | |
| | | 3.00 | 51+940 | 8.18 | 9.058 | |
| | | 3.00 | 51+960 | 8.13 | 9.057 | |
| | | 3.00 | 51+980 | 8.14 | 9.056 | |
| TYPE-6 | TYPE-6 | 3.00 | 52+000 | 8.19 | 9.055 | $R_c = 1680$ $L_c = 236.422$ |
| | | 3.00 | 52+020 | 8.14 | 9.054 | |
| | | 3.00 | 52+040 | 8.15 | 9.052 | |
| | | 3.00 | 52+060 | 8.23 | 9.051 | |
| | | 3.00 | 52+080 | 8.15 | 9.050 | |
| | | 3.00 | 52+100 | 8.08 | 9.049 | |
| | | 3.00 | 52+120 | 8.06 | 9.048 | |
| | | 3.00 | 52+140 | 8.02 | 9.046 | |
| | | 3.00 | 52+160 | 8.06 | 9.045 | |
| | | 3.00 | 52+180 | 8.10 | 9.044 | |
| TYPE-6 | TYPE-6 | 3.00 | 52+200 | 8.05 | 9.043 | $R_c = 1680$ $L_c = 236.422$ |
| | | 3.00 | 52+220 | 8.05 | 9.042 | |
| | | 3.00 | 52+240 | 8.08 | 9.040 | |
| | | 3.00 | 52+260 | 8.07 | 9.039 | |
| | | 3.00 | 52+280 | 8.03 | 9.038 | |
| | | 3.00 | 52+300 | 8.03 | 9.037 | |
| | | 3.00 | 52+320 | 7.95 | 9.036 | |
| | | 3.00 | 52+340 | 7.92 | 9.035 | |
| | | 3.00 | 52+360 | 7.89 | 9.033 | |
| | | 3.00 | 52+380 | 7.88 | 9.032 | |
| TYPE-6 | TYPE-6 | 3.00 | 52+400 | 7.90 | 9.031 | $R_c = 1680$ $L_c = 236.422$ |
| | | 3.00 | 52+420 | 7.90 | 9.030 | |
| | | 3.00 | 52+440 | 7.98 | 9.029 | |
| | | 3.00 | 52+460 | 8.02 | 9.027 | |
| | | 3.00 | 52+480 | 8.10 | 9.026 | |
| | | 3.00 | 52+500 | 8.13 | 9.025 | |

MINISTRY OF PUBLIC WORKS AND TRANSPORT (MPWT)

JAPAN INTERNATIONAL COOPERATION AGENCY
KATAHIRA & ENGINEERS INTERNATIONAL
CTI ENGINEERING INTERNATIONAL CO., LTD

TITLE : PLAN AND PROFILE
 (STA.51+800 - STA.52+500)

SCALE Drawing No. H=1/2000 Sheet No. PL-75
 V=1/200



| STATION | GROUND HEIGHT | PAVEMENT HEIGHT | VERTICAL ALIGNMENT |
|---------|---------------|-----------------|--------------------|
| 52+500 | 8.13 | 9.025 | |
| 52+520 | 8.17 | 9.024 | |
| 52+540 | 8.22 | 9.023 | |
| 52+560 | 8.30 | 9.021 | |
| 52+580 | 8.29 | 9.020 | |
| 52+600 | 8.29 | 9.019 | |
| 52+620 | 8.32 | 9.018 | |
| 52+640 | 8.27 | 9.017 | |
| 52+660 | 8.31 | 9.015 | |
| 52+680 | 8.30 | 9.013 | |
| 52+700 | 8.30 | 9.013 | |
| 52+720 | 8.36 | 9.012 | |
| 52+740 | 8.35 | 9.011 | |
| 52+760 | 8.31 | 9.010 | |
| 52+780 | 8.32 | 9.008 | |
| 52+800 | 8.29 | 9.007 | |
| 52+820 | 8.28 | 9.006 | |
| 52+840 | 8.33 | 9.005 | |
| 52+860 | 8.35 | 9.004 | |
| 52+880 | 8.41 | 9.002 | |
| 52+900 | 8.38 | 9.001 | |
| 52+920 | 8.37 | 9.000 | |
| 52+940 | 8.34 | 8.999 | |
| 52+960 | 8.30 | 8.998 | |
| 52+980 | 8.25 | 8.996 | |
| 53+000 | 8.21 | 8.995 | |
| 53+020 | 8.23 | 8.994 | |
| 53+040 | 8.30 | 8.993 | |
| 53+060 | 8.30 | 8.992 | |
| 53+080 | 8.33 | 8.990 | |
| 53+100 | 8.29 | 8.989 | |
| 53+120 | 8.28 | 8.988 | |
| 53+140 | 8.29 | 8.987 | |
| 53+160 | 8.31 | 8.986 | |
| 53+180 | 8.31 | 8.985 | |
| 53+200 | 8.28 | 8.983 | |

MINISTRY OF PUBLIC WORKS AND TRANSPORT (MPWT)

THE PROJECT FOR THE IMPROVEMENT OF NATIONAL ROAD NO.1 (PHNOM PENH-NEAK LOUENG SECTION) IN THE KINGDOM OF CAMBODIA

JAPAN INTERNATIONAL COOPERATION AGENCY
KATAHIRA & ENGINEERS INTERNATIONAL
CTI ENGINEERING INTERNATIONAL CO.,LTD

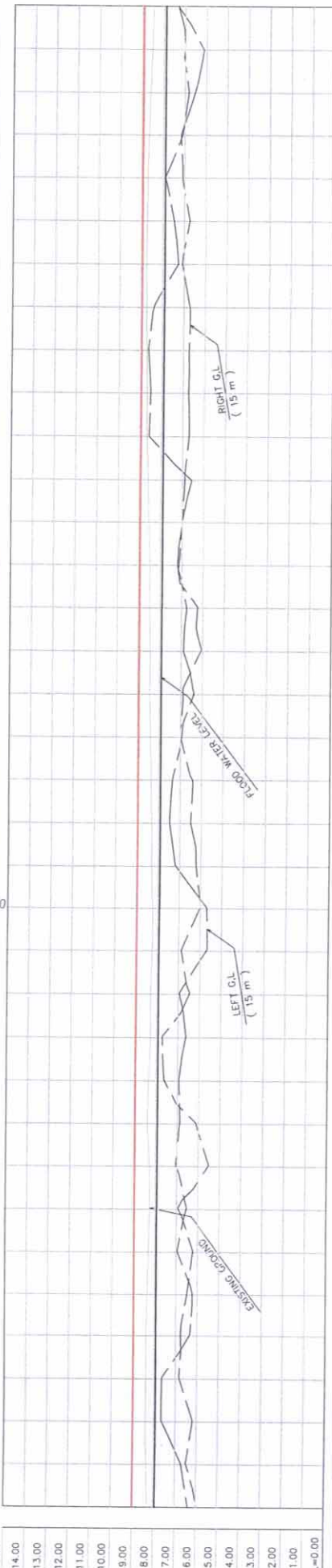
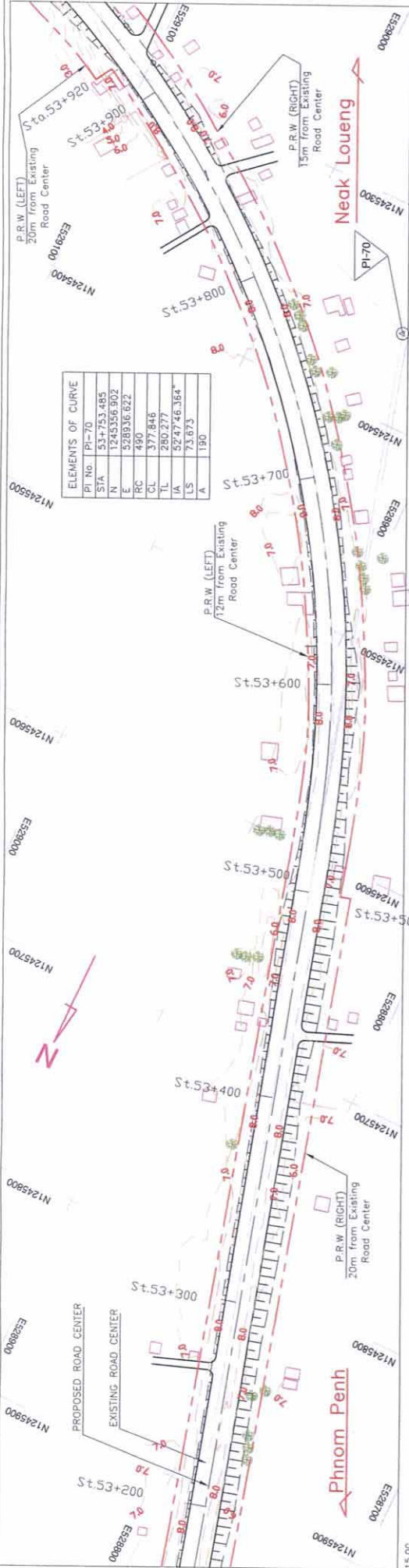
TITLE : PLAN AND PROFILE (STA.52+500 - STA.53+200)

SCALE: H=1/2000, V=1/200

Drawing No. PL-76

Sheet No. PL-76

TYPE-6



| CROSS SECTION TYPE | TYPE-9 | TYPE-3 | TYPE-3 |
|----------------------|---------------------------|--------------------|--------|
| STATION | 8.28 | 8.34 | 8.39 |
| GROUND HEIGHT | 8.34 | 8.39 | 8.39 |
| PAVEMENT HEIGHT | 8.39 | 8.39 | 8.39 |
| ALIGNMENT | 8.47 | 8.47 | 8.47 |
| HORIZONTAL CURVATURE | Rc=490 Lc=377.846 | A=100 Ls=73.673 | NC |
| VERTICAL CURVATURE | Rc=1078.302 L=1078.302 | NC | NC |
| TYPE | TYPE-9 | TYPE-3 | TYPE-3 |

MINISTRY OF PUBLIC WORKS AND TRANSPORT (MPWT)

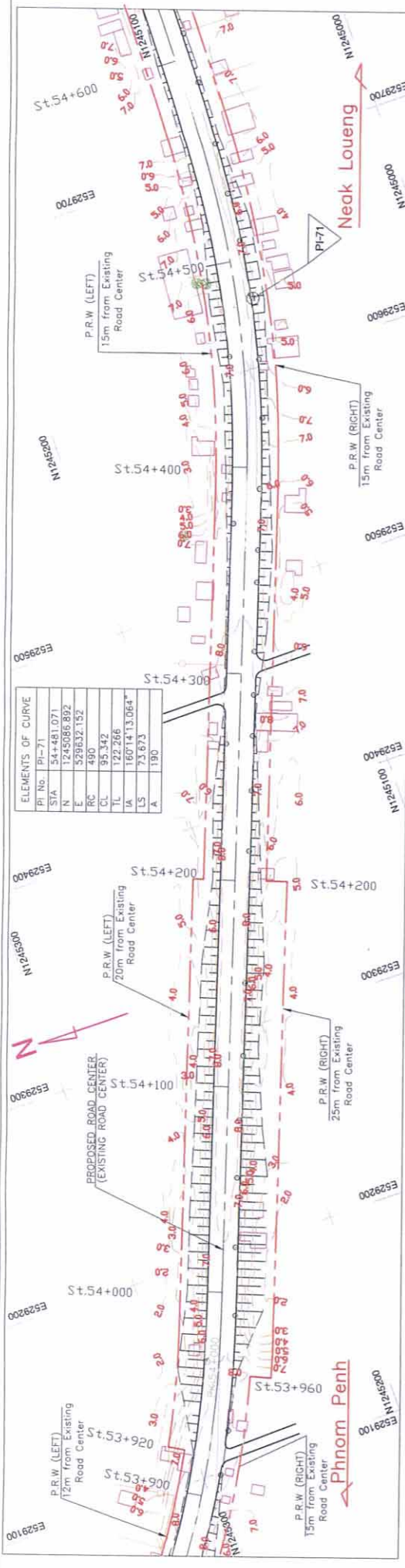
THE PROJECT FOR THE IMPROVEMENT OF NATIONAL ROAD NO.1 (PHNOM PENH-NEAK LOUENG SECTION) IN THE KINGDOM OF CAMBODIA

JAPAN INTERNATIONAL COOPERATION AGENCY
KATAHIRA & ENGINEERS INTERNATIONAL
CTI ENGINEERING INTERNATIONAL CO.,LTD

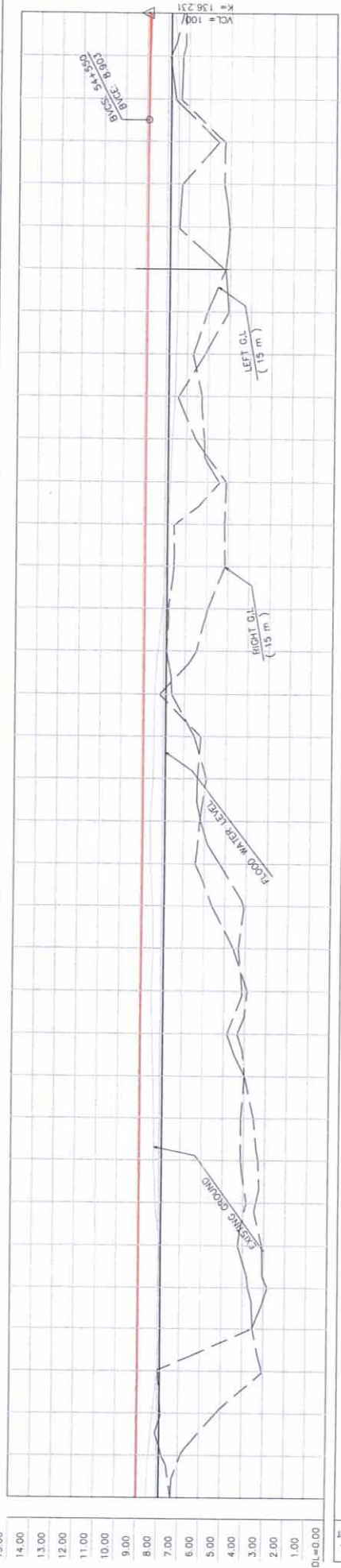
TITLE : PLAN AND PROFILE (STA.53+200 - STA.53+900)

SCALE
H=1/2000
V=1/200

Drawing No.
Sheet No.
PL-77



| ELEMENTS OF CURVE | |
|-------------------|---------------|
| PI No. | PI-71 |
| STA | 54+481.071 |
| N | 1245086.892 |
| E | 529632.152 |
| RC | 490 |
| CL | 95.342 |
| TL | 122.266 |
| LA | 160714.13084° |
| LS | 73.673 |
| A | 190 |



| CROSS SECTION TYPE | TYPE-3 | TYPE-3 |
|--------------------|--|---|
| STATION | 53+900 | 54+600 |
| GROUND HEIGHT | 8.47 | 7.67 |
| PROPOSED HEIGHT | 8.38 | 7.53 |
| FINISH ELEVATION | 8.38 | 7.53 |
| VERTICAL ALIGNMENT | 8.42 | 8.808 |
| CURVATURE | CS | CS |
| HORIZONTAL | Rc=490 Lc=377.846 A=190 Ls=73.673 | Rc=490 Lc=95.342 A=190 Ls=73.673 |
| SUPER-ELEVATION | e=4% | e=4% |
| TYPE | TYPE-3 | TYPE-3 |

MINISTRY OF PUBLIC WORKS AND TRANSPORT (MPWT)

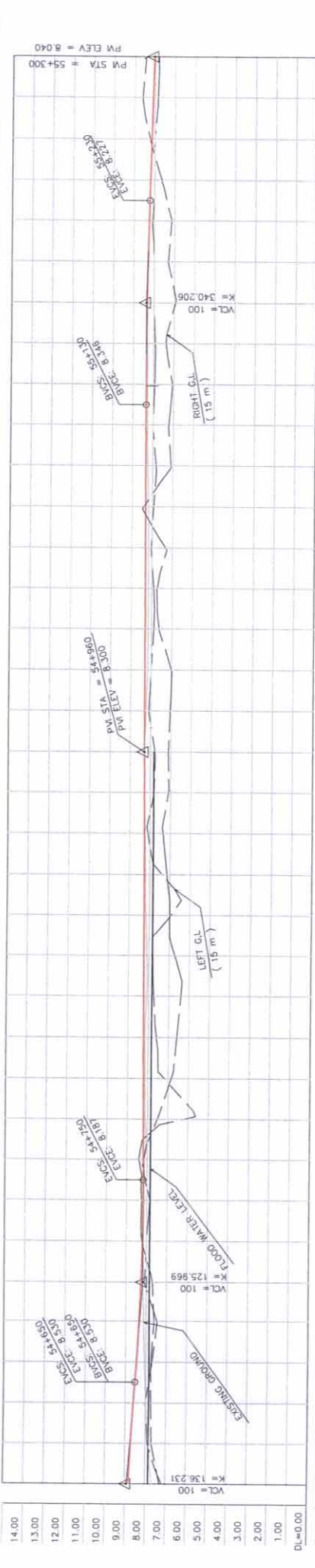
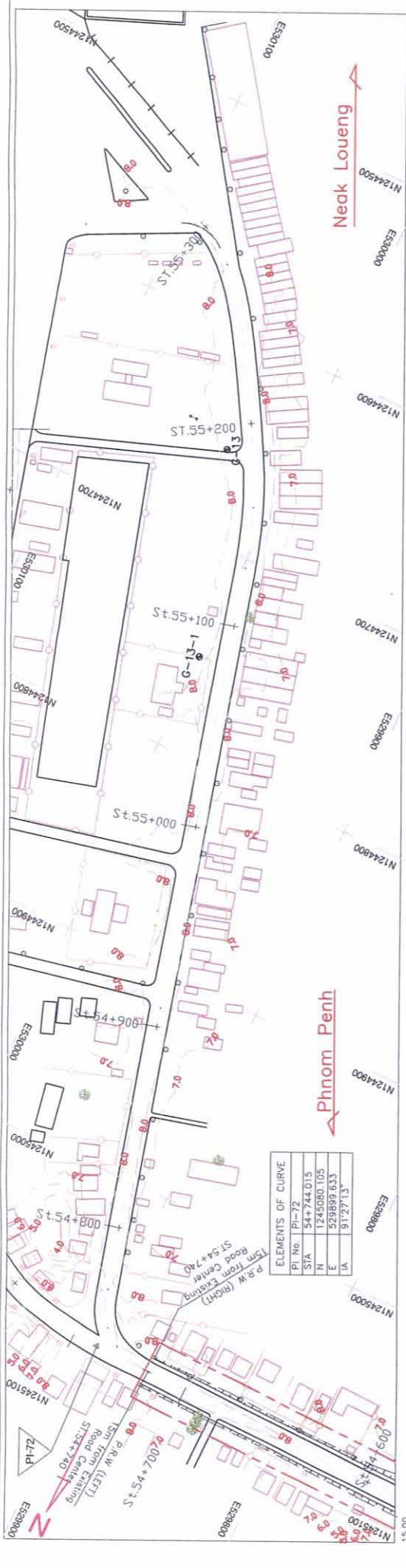
THE PROJECT FOR THE IMPROVEMENT OF NATIONAL ROAD NO.1 (PHNOM PENH-NEAK LOUENG SECTION) IN THE KINGDOM OF CAMBODIA

JAPAN INTERNATIONAL COOPERATION AGENCY
KATAHIRA & ENGINEERS INTERNATIONAL
CTI ENGINEERING INTERNATIONAL CO.,LTD

TITLE : PLAN AND PROFILE (STA.53+900 – STA.54+600)

SCALE
H=1/2000
V=1/200

Drawing No.
Sheet No.
PL-78



| TYPE | SECTION | ELEVATION | HEIGHT | STATION | GROUND | PAVEMENT | VERTICAL ALIGNMENT |
|--------|---------|-----------|--------|---------|--------|----------|--------------------|
| TYPE-3 | | 3.00 | -3.00 | -54+600 | -7.67 | 8.808 | 8.900 |
| | | | | -54+620 | -7.84 | 8.719 | 8.600 |
| | | | | -54+640 | -7.99 | 8.600 | 8.460 |
| | | | | -54+660 | -8.07 | 8.344 | 8.160 |
| | | | | -54+680 | -8.12 | 8.259 | 8.206 |
| | | | | -54+700 | -8.16 | 8.206 | 8.186 |
| | | | | -54+720 | -8.16 | 8.186 | 8.192 |
| | | | | -54+740 | -8.11 | 8.186 | 8.203 |
| | | | | -54+760 | -8.11 | 8.203 | 8.214 |
| | | | | -54+780 | -8.11 | 8.214 | 8.225 |
| | | | | -54+800 | -8.13 | 8.235 | 8.246 |
| | | | | -54+820 | -8.14 | 8.257 | 8.268 |
| | | | | -54+840 | -8.09 | 8.278 | 8.289 |
| | | | | -54+860 | -8.09 | 8.278 | 8.300 |
| | | | | -54+880 | -8.16 | 8.300 | 8.305 |
| | | | | -54+900 | -8.20 | 8.311 | 8.316 |
| | | | | -54+920 | -8.23 | 8.322 | 8.327 |
| | | | | -54+940 | -8.17 | 8.333 | 8.338 |
| | | | | -54+960 | -8.17 | 8.344 | 8.348 |
| | | | | -54+980 | -8.23 | 8.358 | 8.363 |
| | | | | -54+990 | -8.30 | 8.372 | 8.377 |
| | | | | -55+000 | -8.17 | 8.386 | 8.391 |
| | | | | -55+020 | -8.16 | 8.397 | 8.402 |
| | | | | -55+040 | -8.17 | 8.408 | 8.413 |
| | | | | -55+060 | -8.18 | 8.419 | 8.424 |
| | | | | -55+080 | -8.18 | 8.430 | 8.435 |
| | | | | -55+100 | -8.23 | 8.444 | 8.449 |
| | | | | -55+120 | -8.26 | 8.458 | 8.463 |
| | | | | -55+140 | -8.27 | 8.472 | 8.477 |
| | | | | -55+160 | -8.30 | 8.486 | 8.491 |
| | | | | -55+180 | -8.36 | 8.500 | 8.505 |
| | | | | -55+200 | -8.26 | 8.514 | 8.519 |
| | | | | -55+220 | -8.25 | 8.528 | 8.533 |
| | | | | -55+240 | -8.23 | 8.542 | 8.547 |
| | | | | -55+260 | -8.17 | 8.556 | 8.561 |
| | | | | -55+280 | -8.12 | 8.570 | 8.575 |
| | | | | -55+300 | -8.04 | 8.584 | 8.589 |
| | | | | -55+320 | -8.04 | 8.598 | 8.603 |

MINISTRY OF PUBLIC WORKS AND TRANSPORT (MPWT)

THE PROJECT FOR THE IMPROVEMENT OF NATIONAL ROAD NO.1 (PHNOM PENH-NEAK LOUENG SECTION) IN THE KINGDOM OF CAMBODIA

JAPAN INTERNATIONAL COOPERATION AGENCY KATAHIRA & ENGINEERS INTERNATIONAL CTI ENGINEERING INTERNATIONAL CO.,LTD

TITLE : PLAN AND PROFILE (STA.54+600 - STA.55+300)

SCALE: H=1/2000 V=1/200

Drawing No. PL-79

Sheet No. PL-79

TYPE-7

