

**Minutes of Discussions**  
**on the Basic Design Study**  
**on the Project for the Improvement of National Road No. 1**  
**(Phnom Penh – Neak Loeung Section)**  
**in the Kingdom of Cambodia**  
**(The third field survey)**


In response to the request from the Royal Government of Cambodia, the Government of Japan decided to conduct a Basic Design Study on the Project for the Improvement of National Road No. 1 (Phnom Penh - Neak Loeung Section) (hereinafter referred to as "the Project") and entrusted the study to the Japan International Cooperation Agency (hereinafter referred to as "JICA").


JICA sent to Cambodia the Basic Design Study Team (the third field survey) (hereinafter referred to as "the Team"), headed by Mr. KOIZUMI Yukihiro, a country officer to Cambodia, Southeast Asia Team III, Group II of Regional Department I, JICA. The Team is scheduled to stay in Cambodia from August 26 to September 8, 2004.

The Team held discussions with the concerned officials of the Royal Government of Cambodia. In the course of the discussions, both sides have confirmed the main items described in the attached sheets.

Phnom Penh, September 1, 2004

  
\_\_\_\_\_  
KOIZUMI Yukihiro  
Leader  
Basic Design Study Team  
Japan International Cooperation Agency

  
\_\_\_\_\_  
H.E. Tram Iv Tek  
Secretary of State,  
Ministry of Public Works and Transport (MPWT)  
Kingdom of Cambodia

  
\_\_\_\_\_  
H.E. Nhean Leng  
Chairman of Inter-Ministerial  
Resettlement Committee (IRC)  
Ministry of Economic and Finance  
Kingdom of Cambodia

## ATTACHMENT

1. The Detailed Measurement Survey including Census Survey (hereinafter referred to as "DMS")
  - (1) The Team explained that the project would be divided into two sections, section from P.K.0 to P.K.22 as phase 2, and section from P.K.22 to Neak Loeung as phase 1 taking into considerations of the progress of DMS.
  - (2) The Cambodian side explained to the Team that the DMS for phase 1 was commenced on July 30, 2004 based on the concept of the Provisional Road Width (hereinafter referred to as "PRW"), which is shown in the drawings for DMS submitted by the Team through JICA Cambodia Office on June 30, 2004 (ref. no. JC-260) and July 8, 2004 (ref. no. JC-291). The monthly progress report were submitted to the Team on August 31, 2004.
  - (3) Both sides confirmed that the estimated amount of compensation to each Project Affected Person (PAP), which should be shown at the time of negotiation between the Inter-Ministerial Resettlement Committee (hereinafter referred to as "IRC") and each PAP, may subject to be changed as the results of the Detailed Design Study.
  - (4) The Team explained the conditions for proceeding of the Detailed Design Study and implementing stage of the Project as follows:

*The Cambodian side should complete the DMS with Public Consultation in an appropriate manner and obtain agreements from all of PAPs about the conditions and contents of resettlement and/or setback. The agreement between IRC and PAPs should contain at least a) items of compensation, b) estimated amount (or unit price and quantities) of compensation, c) commitment to provide replacement land for those who don't obtain appropriate space for relocation and/or setback, and d) other measures necessary for maintaining present livelihood of PAPs for a certain period after resettlement and/or setback.*

*When the Cambodian side changed the above-mentioned important matters for compensation, the Cambodian side should inform to PAPs immediately and obtain amended agreements.*

The Cambodian side showed a sample of agreement between IRC and PAPs to the Team. The Team confirmed that a) items of compensation, b) unit price, quantities and estimated amount of compensation with the PAP's fingerprint and date were mentioned on it. The Cambodian side explained that those who have no land for relocation and/or setback would be provided alternative relocation site based on negotiations. Alternative lands for the PAPs are to be prepared by the end of December 2004.
  - (5) The Team explained to the Cambodian side that the third party (local NGO and/or consultant) would start the external monitoring for DMS around September 10, 2004. Name of the selected third party, terms of reference (TOR) will be informed to the Cambodian side prior to commencement of the external monitoring.
  - (6) Based on lessons learned from having conducted DMS until now, the Cambodian side recognized that more information disclosure to the PAPs would be required. The Cambodian side decided to hold public consultations meetings at least two places. In response to the request by the Cambodian side, the Team agreed to provide technical support (design concept, standard of cross sections, social services facilities

Td Y.K.

etc) during the Team's staying in Cambodia. Both sides agreed contents of the meetings, distribution materials etc would be discussed prior to the meetings.

2. The Right of Way (hereinafter referred to as "ROW") and the manner of compensation for loss of existing residential and commercial use of land in ROW, and the Resettlement Action Plan (hereinafter referred to as "RAP")

- (1) The Cambodian side expressed to the Team that the ROW within "populous area" would be 15m each side in accordance with the letter on August 3, 2004 from the IRC to JICA Cambodia Office as attached.
- (2) The Cambodian side submitted to the Team about the Guideline of the Resettlement Action Plan for the PAPs. The Team requested to the Cambodian side that more detail information about each type of work such as contents of work, procedure to move to the next work etc be submitted to JICA Cambodia Office by September 3, 2004.
- (3) The Team requested to the Cambodian side that the compensation for loss of existing residential and commercial use of land in ROW (money, equivalent replacement land or measures necessary for maintaining present livelihood of PAPs) should be taken into considerations in compliance with the reasons and recommendations shown in the chapter 5.2.3 to 5.2.6 of the Preparatory Study Report on the Confirmation of Environmental and Social Considerations of the Project.
- (4) The Cambodian side submitted the working schedule of resettlement on NRI as per Annex-1. The Team requested to the Cambodian side that more detail information about each type of works such as contents of each work, necessary procedure to move to the next work, practical schedule by each work and so on be submitted to JICA Cambodia Office by September 2, 2004.

3. Schedule of the study

- (1) The Team will proceed to further studies in Cambodia by September 8, 2004.
- (2) JICA will prepare the draft report in English and dispatch a team to Cambodia in order to explain its contents around the end of October 2004.
- (3) When the contents of the report is accepted in principle by the Royal Government of Cambodia, JICA will complete the final report and send it to the Royal Government of Cambodia around the end of January 2005.

4. Other Issues related to the phase 2

- (1) Both sides agreed that the improvement of the Chba Ampov intersection including installation of signals should be excluded from the Project, and overlay of the intersection will be included in the Project.
- (2) Both sides agreed that retaining wall structures be adopted at section from PK 0.3 to PK 1.9 to be installed at this moment in order to minimize number of PAP. However taking into considerations of safety and smooth traffic flow, it may subject to be changed at the detailed design stage based on the result of public consultations.
- (3) Both sides agreed that design drawing at Kokir market prepared by the Team be adopted. It may subject to be changed at the detailed design stage based on the result of public consultations.

*me*

*JK*



ព្រះរាជាណាចក្រកម្ពុជា  
ជាតិ សាសនា ព្រះមហាក្សត្រ  
KINGDOM OF CAMBODIA  
Nation Religion King

ក្រសួងសេដ្ឋកិច្ច និង ហិរញ្ញវត្ថុ  
MINISTRY OF ECONOMY AND FINANCE

August 03 , 2004

N<sup>o</sup> 3737.MEF/.....

H.E.Mr.Juro CHIKARAISHI  
Resident Representative  
JICA Cambodia Office

Subject: DMS Survey on the Project on the Improvement of  
National Road No.1 (Phnom Penh-Neak Loueng section )

Excellency ,

This is to refer to your letter JC16-260 dated June 30, 2004, regarding the request to conduct DMS Survey on the Project on the Improvement of National Road No.1(Phnom Penh- Neak Loueng section),and to refer to Katahira Engineers International's letter dated July 9,2004.

In this respect, we would like to inform you that the Inter-Ministerial Resettlement Committee(IRC) has conducted DMS Survey at Kokir Market from July 20 to July 22,2004.

In response to Katahira Engineers International's request, we would like also to inform you as follow :

1. Our view on the PRW scheme at Sta.0+300-1+900, is that 15 m from the centerline should be used.
2. We will compensate to all houses, which are located outside the PRW but suffer a loss by the project.
3. The PRW scheme at Kokir Market section should be 15m from the center line.

By following work plan schedule,our IRC working group is still continuing DMS survey at Neak Loueng Section ( in direction from PK.55 to PK.22 ).

Please accept the assurances of my high consideration, *M. N. Leng*

Yours Sincerely,



*M. N. Leng*  
N. N. Leng

Chairman of Inter-Ministerial  
Resettlement Committee(IRC)

C.C: - Chairman of Steering Committee, MPWT  
- Katahira Engineers International



*TQ*  
*Y.K. Phum*

Works Schedule of Resettlement on NR1

Type of Works	Oct-04	Nov-04	Dec-04	Jan-05	Feb-05	Mar-05	Apr-05
Document Preparation	█						
Document to MEF	█						
Document to Priminister	█						
Mandate Preparation		█					
Budget Allocation			█				
PAP's Compensation				█			
PAP's Relocation						█	

Ted  
J.K.  
me

DAILY REPORT OF DEMARKATION AND DETAIL MEASUREMENT SURVEY  
 ON THE PROJECT AFFECTED PERSON ALONG THE SECTION OF NATIONAL ROAD No. 1  
 (Phnom Penh - Neak Loeung Section)

REPORT UP TO: 20<sup>th</sup> AUGUST, 2004

I Brief Activities

- The working group of the Resettlement Committee, consists of staff from the Ministry of Economy & Finance, Ministry of Public Works and Transport and Kandal Province has been conducting the Demarkation and Detail Measurement Survey on the section of the National Road No. 1 - Phnom Penh-Neak Loeung - since July 30th 2004.
- Base the Basic Design Drawings provided by the Consultant, the demarcation team sets out the required Provisional Road Width from station 54+740 (at the End point of the Project) backward upto station... 42+600. Concrete posts are also installed within 30m from the existing road centerline (250m interval) to identify the Right of Way for futur development.
- Following the demarcation, twd interview teams carrying out the Detail Measurement Survey with the Affected Person within the required Provisional Road Width in the same direction.
- The Price negotiation and signing contract with the affected person has just started today from CH 54+740 upto CH 54+630. without any costaele.

II Daily Progress of Interview Team

No.	Date of Survey	Commune	Number of Affected Households, who have been interviewed	Number of Structures	Number of None Structures	Remarks
<b>PROVINCE: KANDAL</b>						
<b>DISTRICT: Leuk DeK</b>						
1	31-Jul-2004	Kampong Phnum	5	4	1	
		Prek Tunlorp	4	3	1	
2	1-Aug-2004	Kampong Phnum	4	4	0	
		Prek Tunlorp	15	10	5	
3	2-Aug-2004	Kampong Phnum	14	11	3	
		Prek Tunlorp	2	1	1	
4	3-Aug-2004	Kampong Phnum	9	8	1	
		Prek Tunlorp	11	8	3	
5	4-Aug-2004	Kampong Phnum	12	6	6	
		Prek Tunlorp	9	6	3	
6	5-Aug-2004	Kampong Phnum	31	9	22	
		Prek Tunlorp	1	0	1	
7	6-Aug-2004	Kampong Phnum	37	12	25	
8	7-Aug-2004	Kampong Phnum	31	16	15	
9	8-Aug-2004	Kampong Phnum	10	3	7	
10	9-Aug-2004	Kampong Phnum	27	18	9	
11	10-Aug-2004	Kampong Phnum	23	11	12	
12	11-Aug-2004	Kampong Phnum	29	15	14	
13	12-Aug-2004	Kampong Phnum	14	7	7	
14	13-Aug-2004	Kampong Phnum	8	5	3	
15	14-Aug-2004	Kampong Phnum	35	25	10	
<b>PROVINCE: KANDAL</b>						
<b>DISTRICT: Kien Svay</b>						
16	15-Aug-2004	Korki Thom	18	14	4	
17	16-Aug-2004	Korki Thom	25	18	7	
18	17-Aug-2004	Korki Thom	44	38	6	

*Handwritten signature/initials*

No.	Date of Survey	Commune	Number of Affected Households, who have been interviewed	Number of Structures	Number of None Structures	Remarks
19	18-Aug-2004	Korki Thom	38	17	21	
20	19-Aug-2004	Korki Thom	23	7	16	
<b>Total</b>			<b>479</b>	<b>276</b>	<b>203</b>	

### III Work Progress by Commune

No.	District	Commune	Number of Affected Person, who have been interviewed	Number of Structures	Number of None Structures	Remarks
<b>Kandal Province</b>						
1	Leuk Dek	Prek Tunlorp	41	28	13	Completed
2		Kampong Phnum	255	129	126	Completed
3	Kien Svay	Koki Thom	183	119	64	In Progress
4		Samraong Thom	-	-	-	Not yet
5		Banteay Dek	-	-	-	Not yet
6		Dey Ed	-	-	-	Not yet
7		Koki	-	-	-	Not yet
8		Phum Thum	-	-	-	Not yet
9		Kbal Kod	-	-	-	Not yet
10		Prek Eng	-	-	-	Not yet
11		Veal Sbov	-	-	-	Not yet
<b>Phnom Penh Municipality</b>						
12	Mean Chey	Nirod	-	-	-	Not yet
13		Chbar Ampeuv 1	-	-	-	Not yet
14		Chbar Ampeuv 2	-	-	-	Not yet
<b>Total</b>			<b>479</b>	<b>276</b>	<b>203</b>	

*Teley* *me*  
*JK*

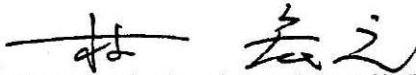
**Minutes of Discussions  
on the Basic Design Study  
on the Project for the Improvement of National Road No. 1  
(Phnom Penh – Neak Loeung Section)  
in the Kingdom of Cambodia  
(Explanation on the Draft Report)**

In response to the request from the Royal Government of Cambodia, the Government of Japan decided to conduct a Basic Design Study on the Project for the Improvement of National Road No. 1 (Phnom Penh - Neak Loeung Section) (hereinafter referred to as "the Project") and entrusted the study to the Japan International Cooperation Agency (hereinafter referred to as "JICA").

JICA sent to Cambodia the Basic Design Study Team (Explanation on the Draft Report) (hereinafter referred to as "the Team"), headed by Mr. Hiroyuki Hayashi, an officer, Traffic Infrastructure Team, Project Management Group II of the Grant Aid Management Department, JICA. The Team is scheduled to stay in Cambodia from October 21 to November 3, 2004.

The Team held discussions with the concerned officials of the Royal Government of Cambodia. In the course of the discussions, both sides have confirmed the main items described in the attached sheets. The Team will proceed to further works and prepare the Basic Design Study Report.

Phnom Penh, October 28, 2004



Hiroyuki Hayashi  
Leader  
Basic Design Study Team  
Japan International Cooperation Agency



H.E. Tean Tek  
Secretary of State,  
Ministry of Public Works and Transport (MPWT)  
Kingdom of Cambodia



H.E. Vongsey Vissoth  
Deputy Secretary General  
Ministry of Economy and Finance  
Kingdom of Cambodia



## ATTACHMENT

### 1. Components of the Draft Report

The Cambodian side agreed and accepted in principle the components of the Draft Report explained by the Team.

### 2. Schedule of the Study

JICA will complete the Final Report in accordance with the confirmed items and send it to the Cambodian side around the end of February 2005.

### 3. The design of the Project

(1) The Team explained that the Project would be divided into two Sections as confirmed in the Minutes of Discussions for the third field survey signed on September 1, 2004, however, the point of division should be changed from P.K. 22+000 to P.K. 23+900 in order to mitigate affected households.

- Section from P.K. 0+000 to P.K. 23+900 as phase 2
- Section from P.K. 23+900 to Neak Loeng as phase 1

(2) Both sides confirmed that "the Major Design Concept" including countermeasures for mitigation of environmental and social impact attached as the Annex-1 in the Minutes of Discussions for the second field survey signed on April 23, 2004 should be revised in accordance with the design of the Project shown in the Draft Report. The revised Major Design Concept is attached as Annex-1.

### 4. The Policy of the Government of Japan (hereinafter referred to as "GOJ")

The Japanese side has explained the GOJ's Policies for Environmental and Social Considerations (hereinafter referred to as "the ESC") for the Project, and set down critical passages for each stage of the Project in the series of discussions during the Preparatory Study and the Basic Design Study. As the results of discussions, both sides confirmed the benchmark for the start of the Detailed Design Study and the implementation stage of Project should be ***"to obtain agreements from all of the PAPs about the conditions and contents of the resettlement (relocation and/or setback), in principle"*** in the Minutes of Discussions for the second field investigation of the Preparatory Study signed on December 4, 2003.

The Ministry of Foreign Affairs of Japan (hereinafter referred to as "MOFA") set down and both sides confirmed the specific definition of the above-mentioned "agreements from all of the PAPs about the conditions and contents of the compensations for involuntary relocation and/or setback" as below;

#### (1) As for the phase 1 of the Project

a) to obtain agreements for all (approx. 1,650\*<sup>1</sup>) properties/assets from all (about 1,440\*<sup>1</sup>) PAPs by preparing 3 templates, such as "Survey and Property Assessment", "Photographic Record", and "Agreement of Compensation for Affected House, Land and Other Properties for Affected People" through the Detailed Measurement Survey including Census Survey (hereinafter referred to as "DMS").

\*<sup>1</sup> the number of properties/assets may be changed in accordance with the results of the on-going DMS.

b) to provide a leaflet including outlines of the Project, positive and negative impacts on PAPs, conditions and contents of compensation for involuntary relocation and/or setback, contact points for grievance and claims from PAPs.

c) to submit the final report on the results of above-mentioned negotiations with PAPs after obtaining agreements from all PAPs. In the event that any PAPs still disagree with the condition and contents of the compensation even after having several negotiations between the Inter-Ministerial Resettlement Committee (hereinafter referred to as "IRC") and the PAPs, the Cambodian side should show in the report, the PAP's reasons of disagree, process and contents of the series of negotiations with the PAP together with views and further measures taken by the Cambodian side.

(2) As for the phase 2 of the Project

a) to make implementation plan and schedule for the following b) to e) and submit it to the Japanese side through JICA Cambodia Office before the commencement of implementation.

b) to hold public consultation (stakeholder) meetings and explain the outline of the Project, positive and negative impact on PAPs, the condition and contents of the compensation for involuntary resettlement and/or setback. The leaflet, which should be prepared by the Cambodian side as described in 4-(1)-b) will be provided to PAPs at the public consultation (stakeholder) meetings.

c) to conduct the DMS and obtain detailed information about affected properties/assets.

d) as same procedures described in 4-(1)-a).

e) as same procedures described in 4-(1)-c).

(3) Both sides confirmed that the flow chart of the Critical Passage to Japan's Grant Aid shown in "Annex-5" and "Annex-6" in the Minutes of Discussions for the first field survey signed on March 10, 2004 should be principle one and be modified in accordance with the results of public consultation (stakeholder) meetings, negotiation with PAPs and discussions between both sides during the Basic Design Study.

a) the Critical Passage to the Exchange of Notes (hereinafter referred to as "E/N") for commencement of construction of the roads in the Project, which are shown in the "Annex-5" and "Annex-6" should be changed to "All PAPs are ready for relocation or setback" instead of "All PAPs already relocated" from the viewpoints of PAPs' benefit. The Team requested to the Cambodian side that clearance of lands for the Project should be done by each sub-section at least one (1) month before the commencement of preparation works and/or construction works for each sub-section of the Project.

b) Detailed schedule for preparation works and/or construction works in each sub-section should be decided during the Detailed Design stage and the Cambodian side agreed to inform the PAPs resides in the sub-section of the schedule at least two (2) months before the commencement of relocation/setback.

c) The Critical Passage to Japan's Grant Aid shown in the "Annex-5" should be revised in accordance with the progress of the Project. The revised "Annex-5" and "Annex-6" are attached as Annex-2 and Annex-3 in this Minutes of Discussions.



Tel

#### 5. The appropriateness of each procedure of the DMS and External Monitoring

(1) The Team presented the report titled "Aiding the National Route to Poverty?" (hereinafter referred to as "NGO's Report"), which was submitted to JICA by the Cambodian local NGO called "the NGO Forum on Cambodia", to the Cambodian side.

(2) The Japanese side will make fact-finding survey by the third party on the above matters.

(3) In case that inadequate consensus-building were confirmed as the results of the survey, the Japanese side would request the Cambodian side to check the appropriateness of each procedure. After the discussion with the Cambodian side, the Japanese side may request the Cambodian side to review DMS procedures and conduct another round of DMS in the identified areas under the External Monitoring.

(4) The Japanese side explained that the External Monitoring should be continued until the completion of ESC for the Project. The Cambodian side agreed the third party to attend the surveys necessary for ESC as the external monitor to ensure transparency and fairness.

#### 6. Compensation items and unit prices

(1) According to the NGO's Report pointing out on the present compensation items and unit prices, the Cambodian side explained that the present compensation items and unit price level were established by the IRC in 2000 based on the detailed investigation results on the consumer prices of each province and other factors. The Cambodian side also explained that the present compensation items and unit prices were still reasonable even five (5) years has past since established. In addition, the Cambodian side should compensate PAPs for fruit trees even the trees are within ROW, which is one of the improvement points of the compensation criteria compared with the previous project.

(2) The Japanese side finally requested the Cambodian side to review the compensation items and unit prices and confirm the necessary or unnecessary for revision of each item and unit price before the commencement of payment for compensation amount to PAPs. The Cambodian side agreed to review the above-mentioned and report its results in writing to the Japanese side through the JICA Cambodia Office before the end of August 2005.

#### 7. Alternative relocation site

(1) Regarding the alternative relocation sites for PAPs, who have no land or who voluntary relocate, the both sides confirmed that the Cambodian side should secure the alternative relocation site within the same commune, where each PAP presently resides, as much as possible.

(2) The Cambodian side should inform the PAPs of the details of the alternative relocation sites and obtain their agreements.

#### 8. Internal Monitoring conducted by the Cambodian side

The Cambodian side agreed to submit the monthly Internal Monitoring report to the Japanese side through the Embassy of Japan and copy to JICA Cambodia Office in accordance with the MOFA's Guidelines after the Exchange of Notes.

FF

Ted

## 9. Grievance Committee

The Cambodian side agreed to disclose the information of the Grievance Committee and to include the following items in the monthly report.

- a) PAPs' claims to the Grievance Committee
- b) Committee's correspondence to the PAPs
- c) Results of mediation

## 10. Japanese Experts for ESC

The Cambodian side requested the Team to dispatch the Japanese experts for ESC and/or resettlement issues as soon as possible to support to plan and carry out ESC procedures properly. Terms of reference for the experts should be provided to the Team by November 3, 2004.

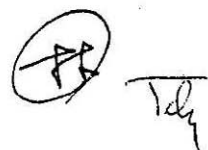
## 11. Other Relevant Issues

(1) The Cambodian side agreed to allocate the budget necessary for securing land(s), relocation of public utilities, undertakings to be done by the Cambodian side, which were shown in Annex-4 of the Minutes of Discussion for the first field survey signed on March 10, 2004.

(2) The Cambodian side submitted the organization chart of the roads and bridges maintenance section of the Kandal Province as per Annex-4.

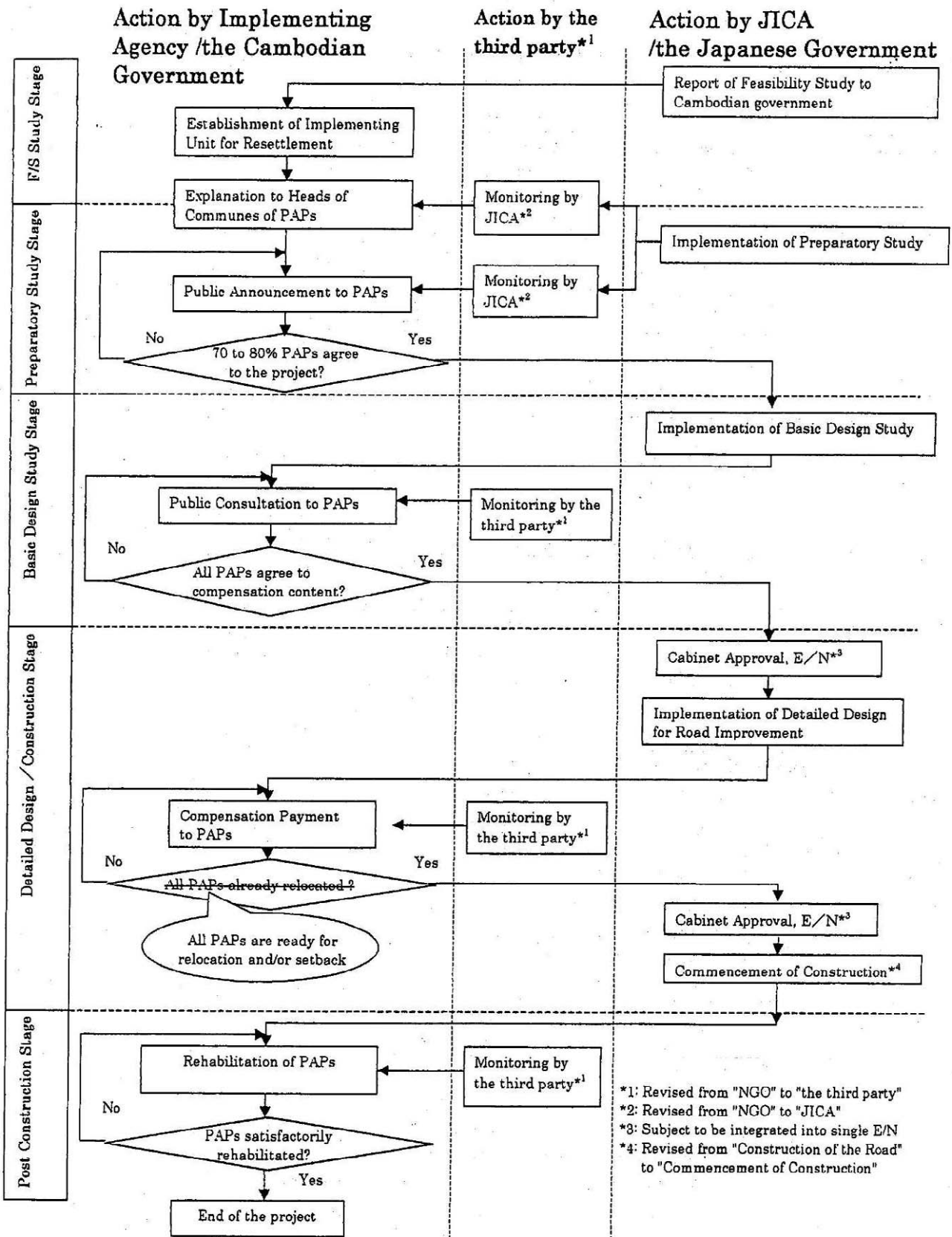
(3) The Cambodian side requested the Team to carry out the counterpart training in Japan on the management of the maintenance of the roads and bridges as a technical cooperation by JICA, and the Cambodian side understands that another official request will be needed to submit from the Cambodian side to the Japanese side through the JICA Cambodia Office.

(4) The Cambodian side requested to provide the truck scale in order to control overloaded vehicles.



Handwritten signature and initials, possibly 'Tdy', next to a circled mark.

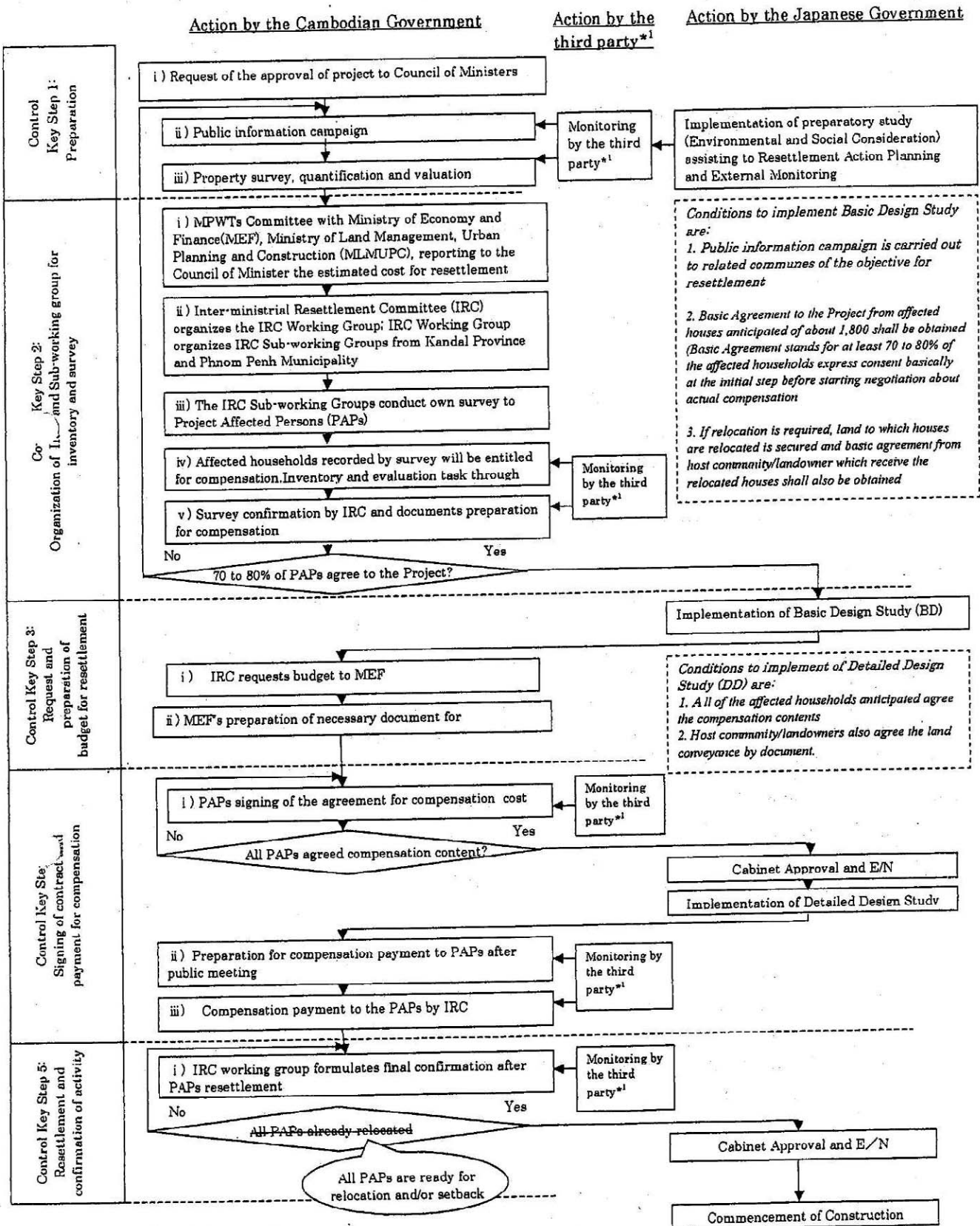
## Major Project Component

No.	Item	Contents
1	Road Improvement	Length : 55.98km (Sta. 0km + 000m ~ 55km+980m) 4 lanes section : 1.80km 2 lanes section : 54.18km
2	Road Widening as Public Service Facility	(1) Ordinary Market Area : 3 Locations (2) Bus Stop / Refuge Space : 20 Locations (3) School / Hospital Area School : 31 Locations Hospital : 9 Locations
3	Bridge Improvement ( PC-I Shape Girder )	3 Bridges Total Length : 240.6m ( 68.8m + 100.3m + 68.8m) Reconstruction : 2 Bridges New Construction : 1 Bridge
4	Culvert Improvement	9 Locations - Pipe Culvert : 2 Locations ( Reconstruction ) - Box Culvert : 7 Locations ( Reconstruction : 2 Locations ) ( New Construction : 5 Locations ) (Total Length : Pipe Culvert 48.4m, Box Culvert 107.1m)
5	Road Drainage Facility	Side Ditch Length : 6,730m Pipe Culvert Length : 645m
6	Revetment and Riverbed Protection Facility	Revetment At Bridge : 3 Locations At Culvert : 8 Locations ( Except Box Culvert No.5 ) Riverbed Protection At Bridge : 3 Locations At Culvert : 9 Locations
7	Counter Measures against Road Slope Erosion	Green Belt Total Length : 7,910m Revetment Total Length : 1,060m Grand Total 8.970m
8	Counter Measures against Soft Ground to Embankment	(1) Replacement by High Quality of Soil Mekong River Side : 24.730km Colmatage Side : 52.623km (2) Replacement by River Sand Mekong River Side : 1.050km Colmatage Side : 1.337km
9	Improvement of Intersection	2 Locations - Chabar Ampov Intersection - Tiger Beer Road Intersection
10	Ancillary Facilities	(1) Retaining Wall - Stone Masonry Wall : 1,635m - L-shape Concrete Retaining Wall : 1,166m (2) Pavement Marking and Traffic Sign - Pavement Marking Center Line, Lane Line, Crosswalk : 175 km - Traffic Sign Regulatory Sign : 80 Nos Warning Sign : 78 Nos Informatory Sign : 20 Nos (3) Guardrail and Guidepost - Guardrail Total Length : 360m - Guidepost Total Quantity : 1,010 Nos



**Annex-2 Critical Passage to Japan's Grant to the Improvement of National Road No. 1 (Phnom Penh - Neak Loung Section) (Revised)**

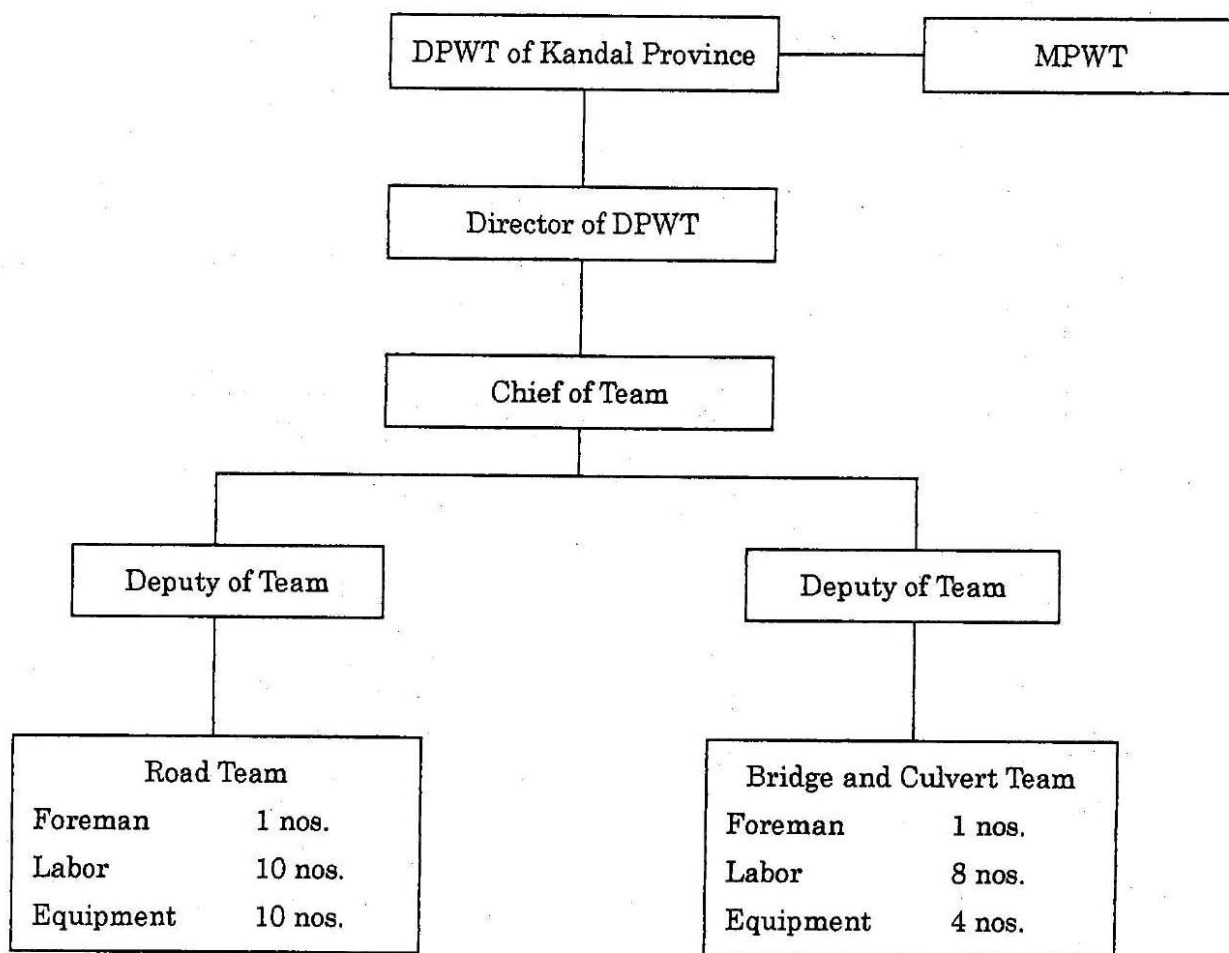


\*1: Revised from "NGO" to "the third party"

### Annex-3 Detailed Critical Passage to Grant Aid (Revised)

*FF*  
*July*

Organization Chart of Maintenance



Maintenance Budget in Latest Three Years

(Unit: US\$)

Year	2002	2003	2004
Budget	143,000	270,000	280,000

*PF*  
*Tely*