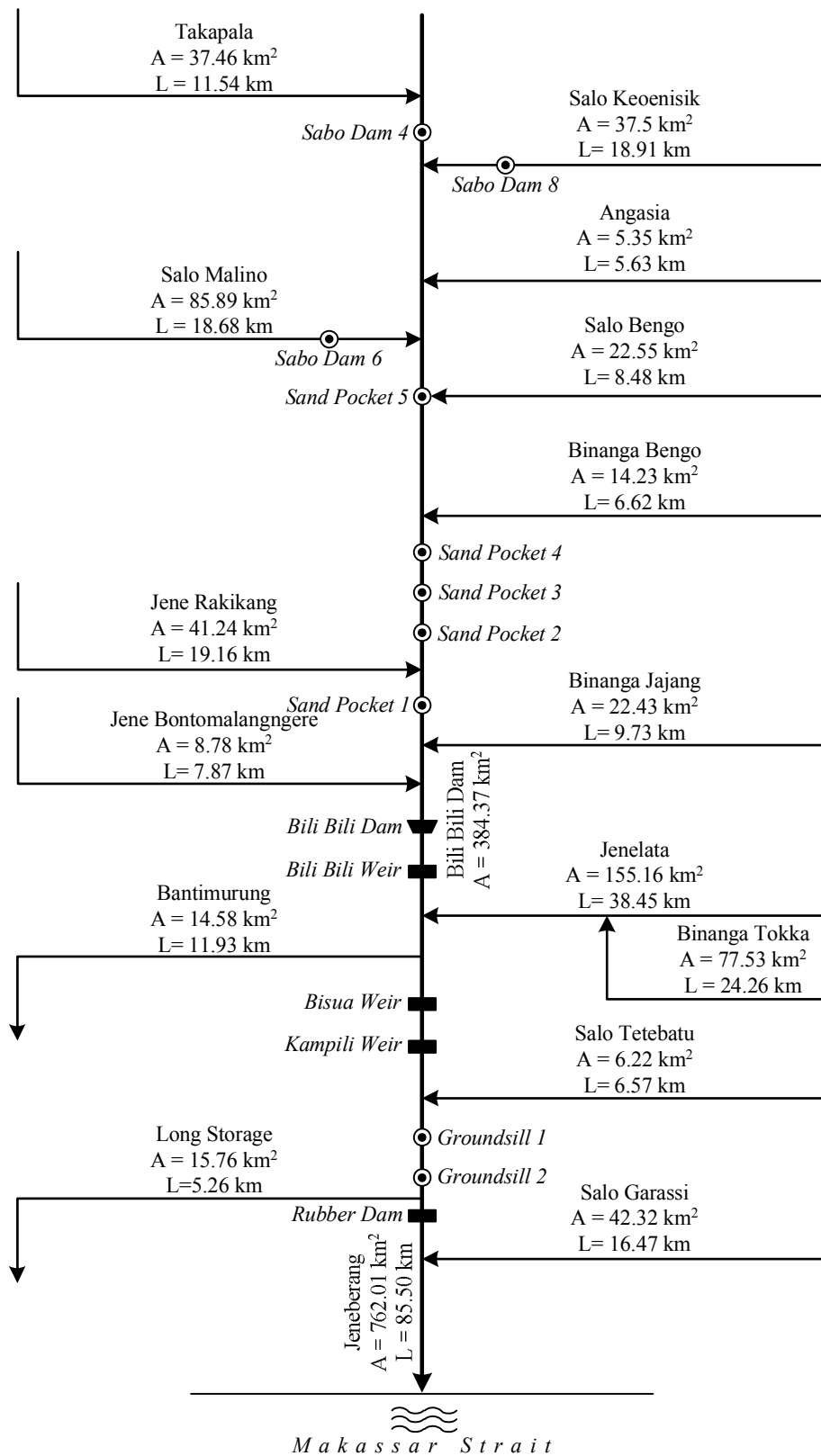


## ***Figures***



**Figure E1.1 River Flow System of Jeneberang River Basin**

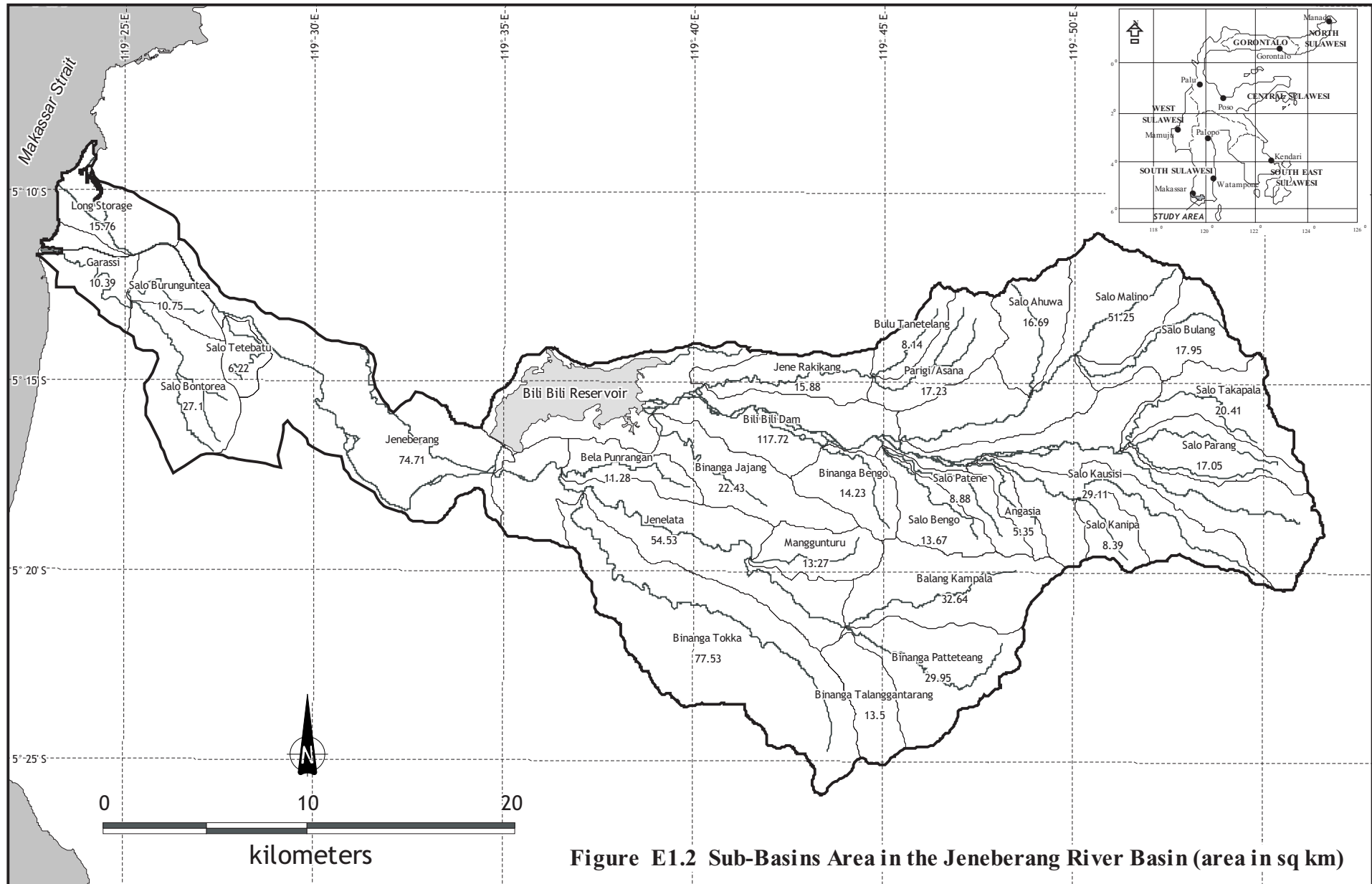


Figure E1.2 Sub-Basins Area in the Jeneberang River Basin (area in sq km)

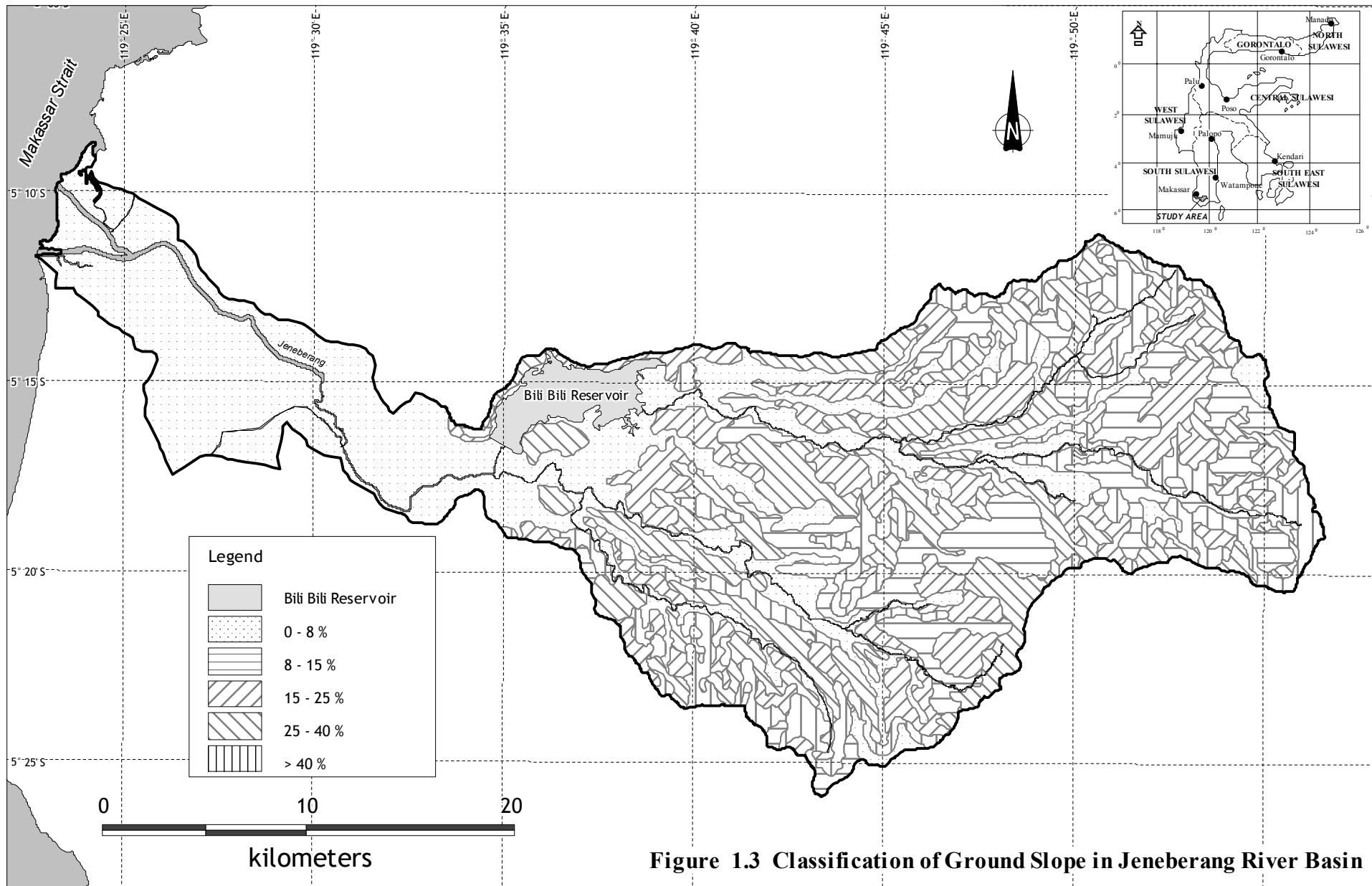
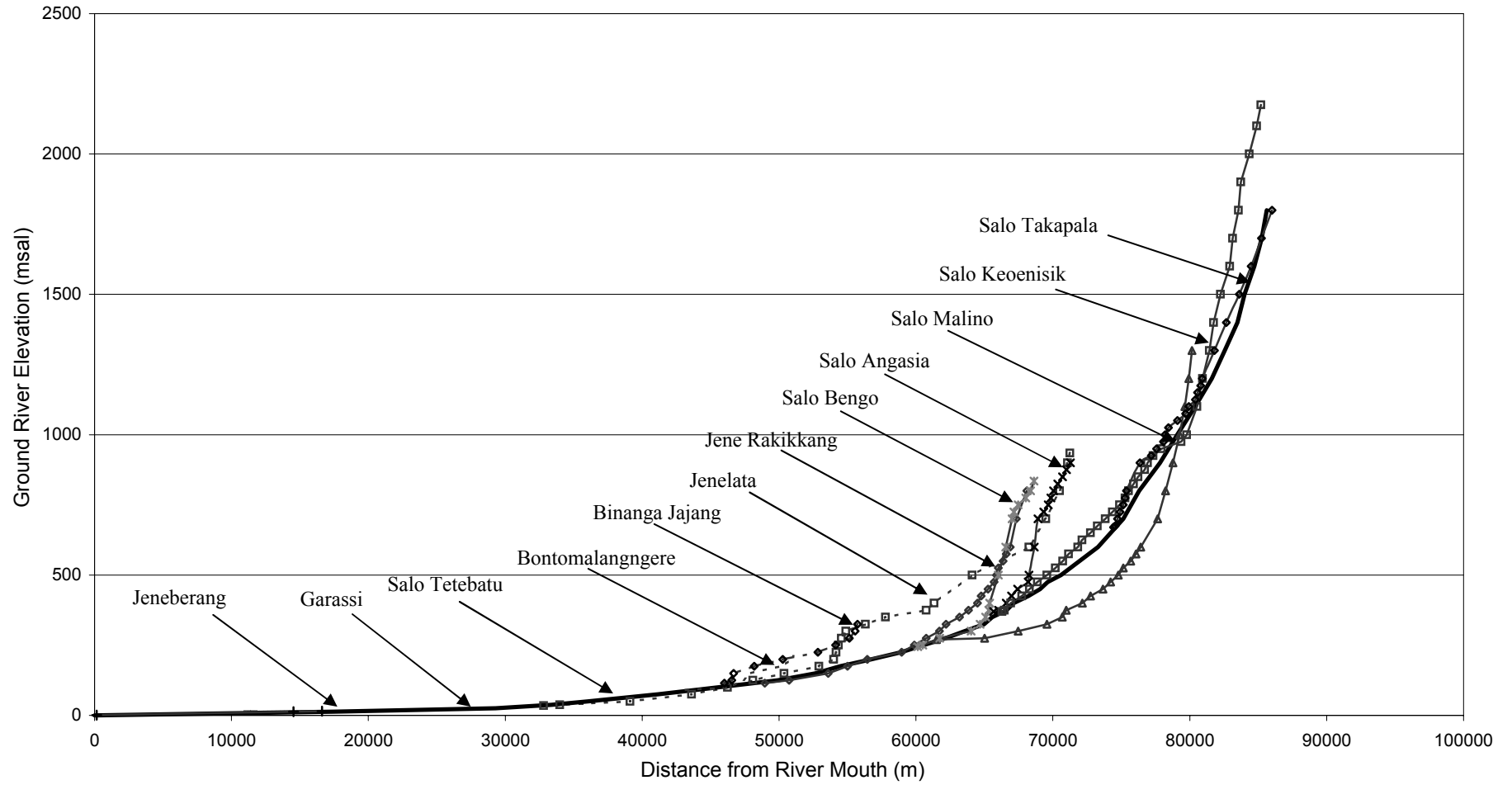
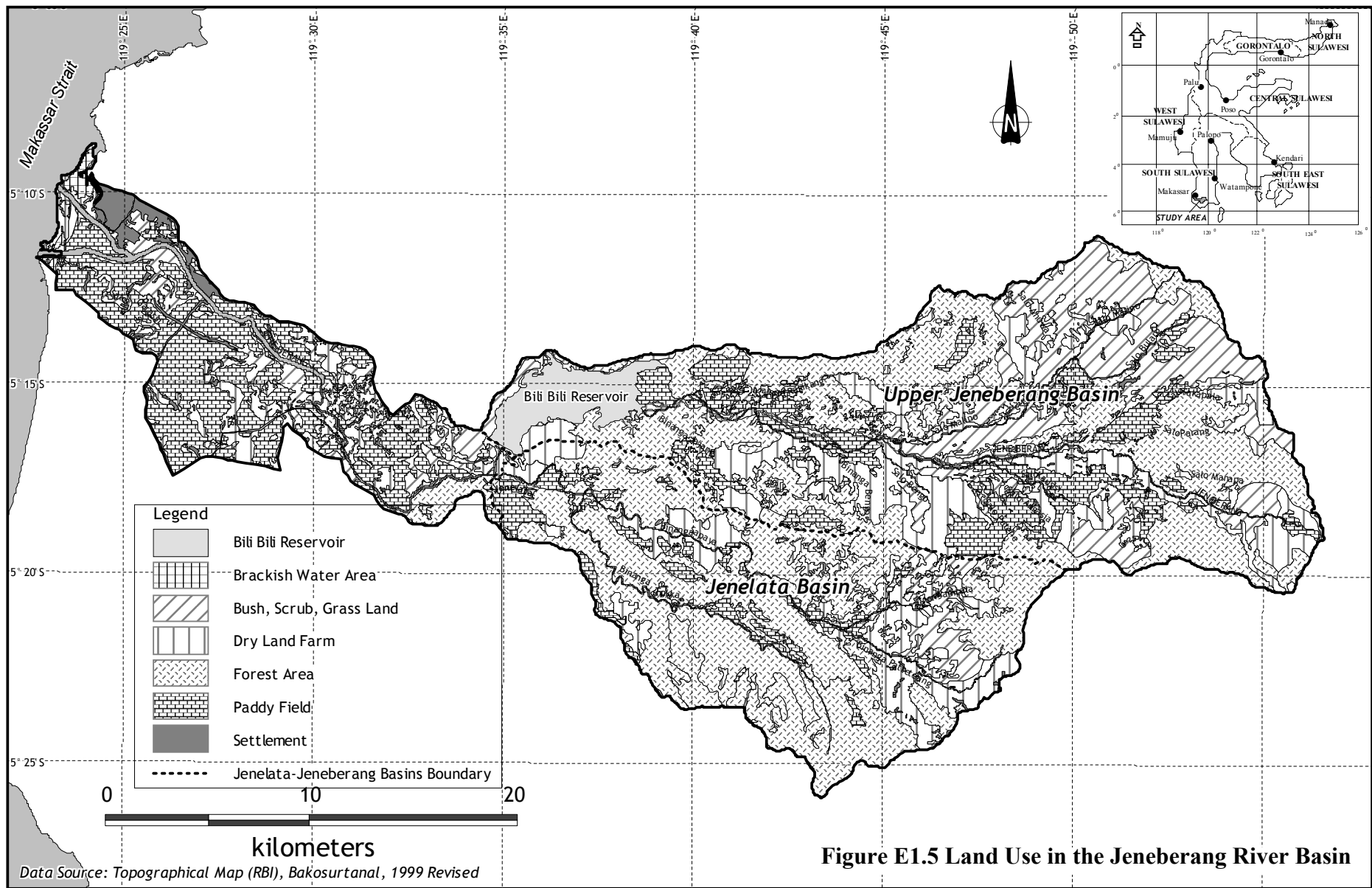


Figure 1.3 Classification of Ground Slope in Jeneberang River Basin

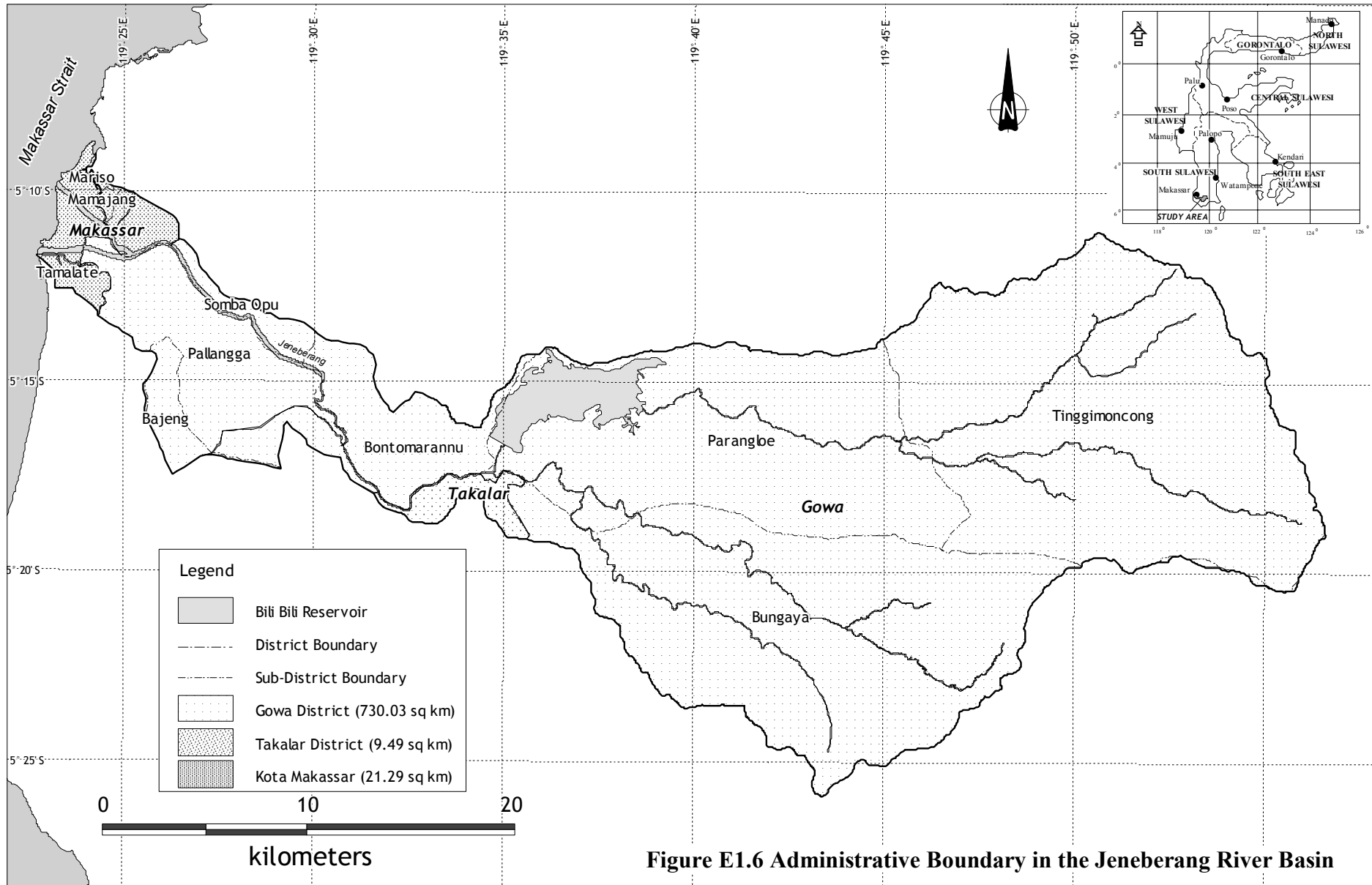


**Figure E1.4 Channel Slope of Jeneberang River and Tributaries**



Data Source: Topographical Map (RBI), Bakosurtanal, 1999 Revised

Figure E1.5 Land Use in the Jeneberang River Basin



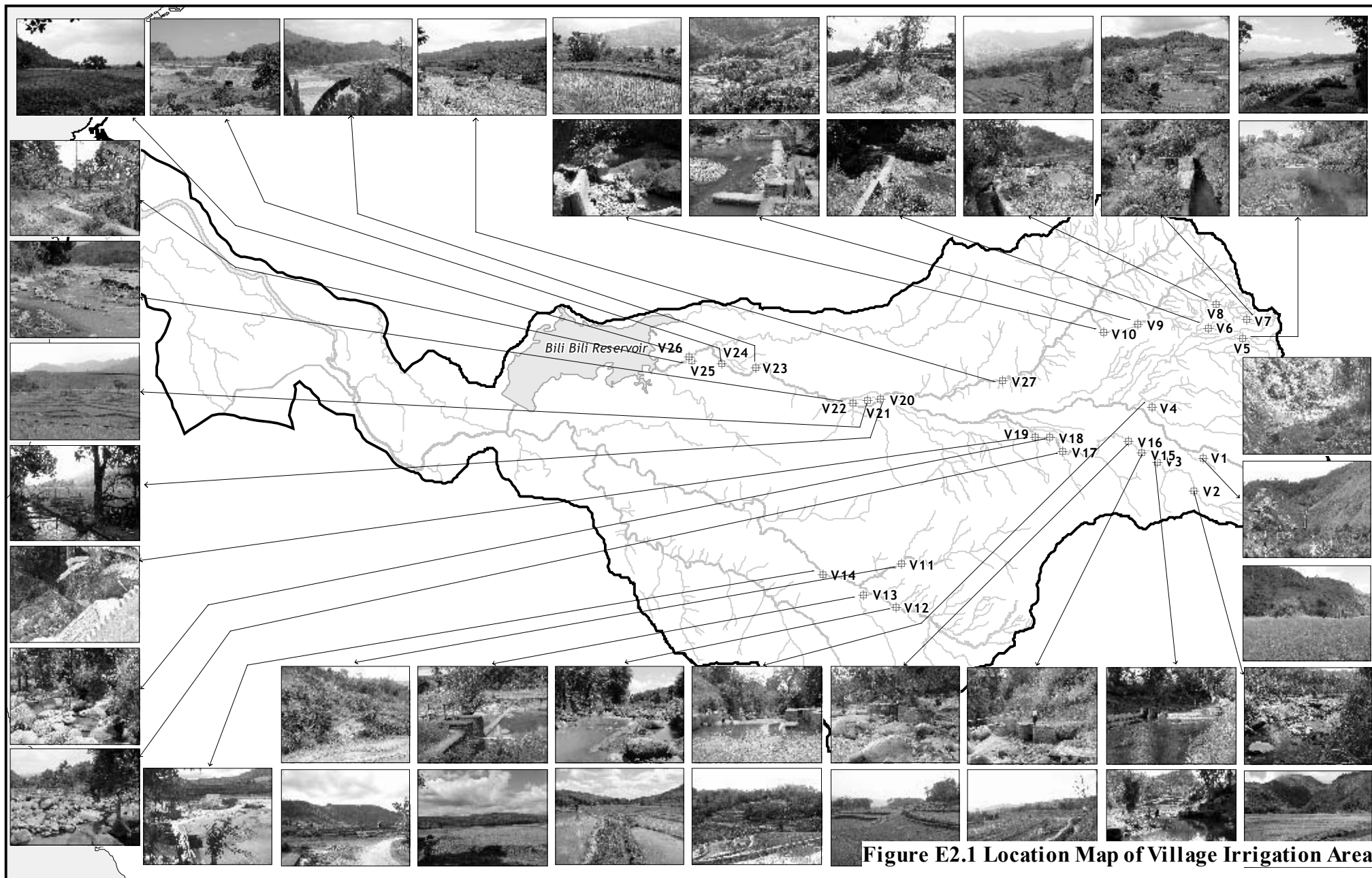
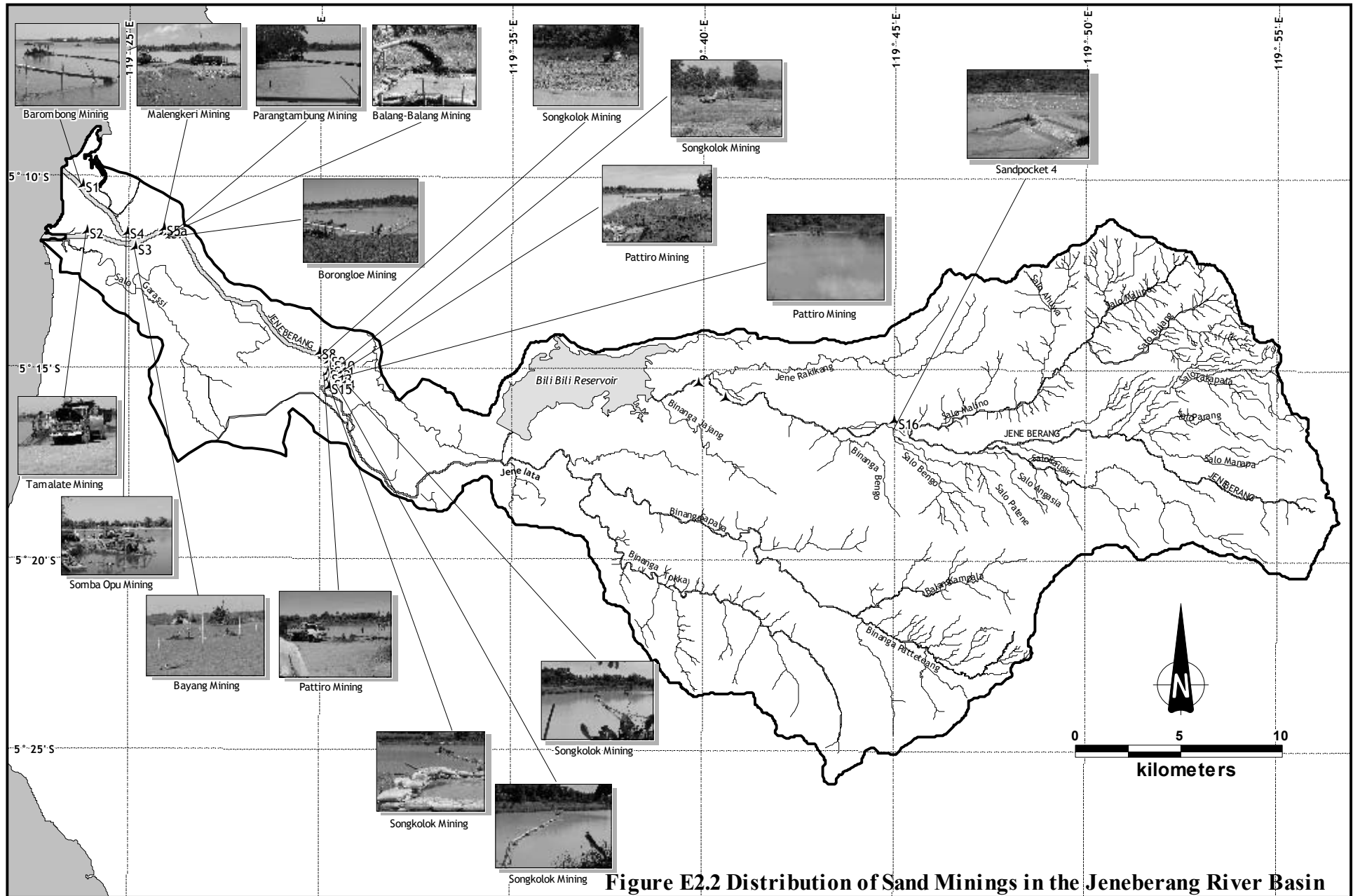


Figure E2.1 Location Map of Village Irrigation Area





**Figure E2.2 Distribution of Sand Minings in the Jeneberang River Basin**

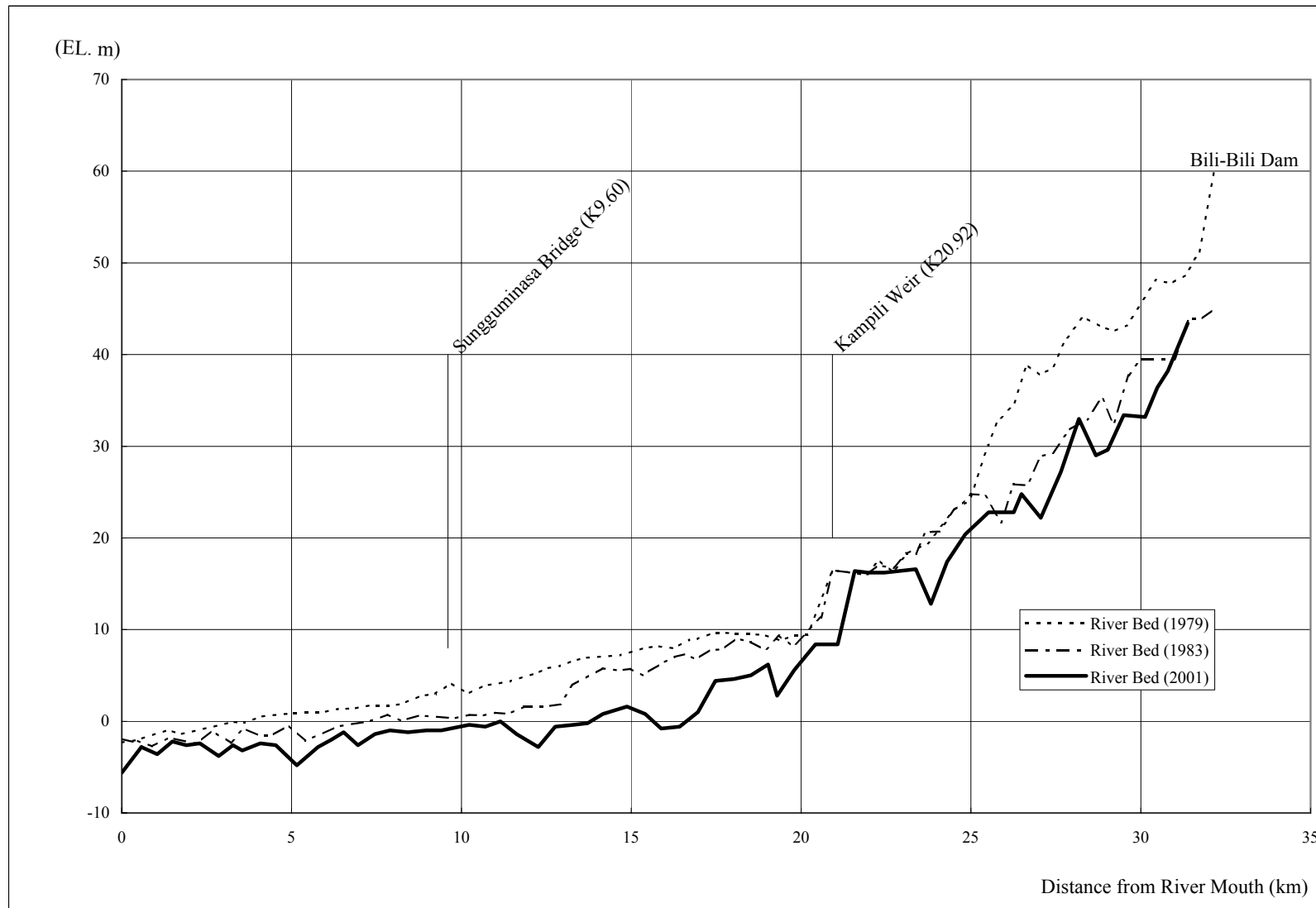
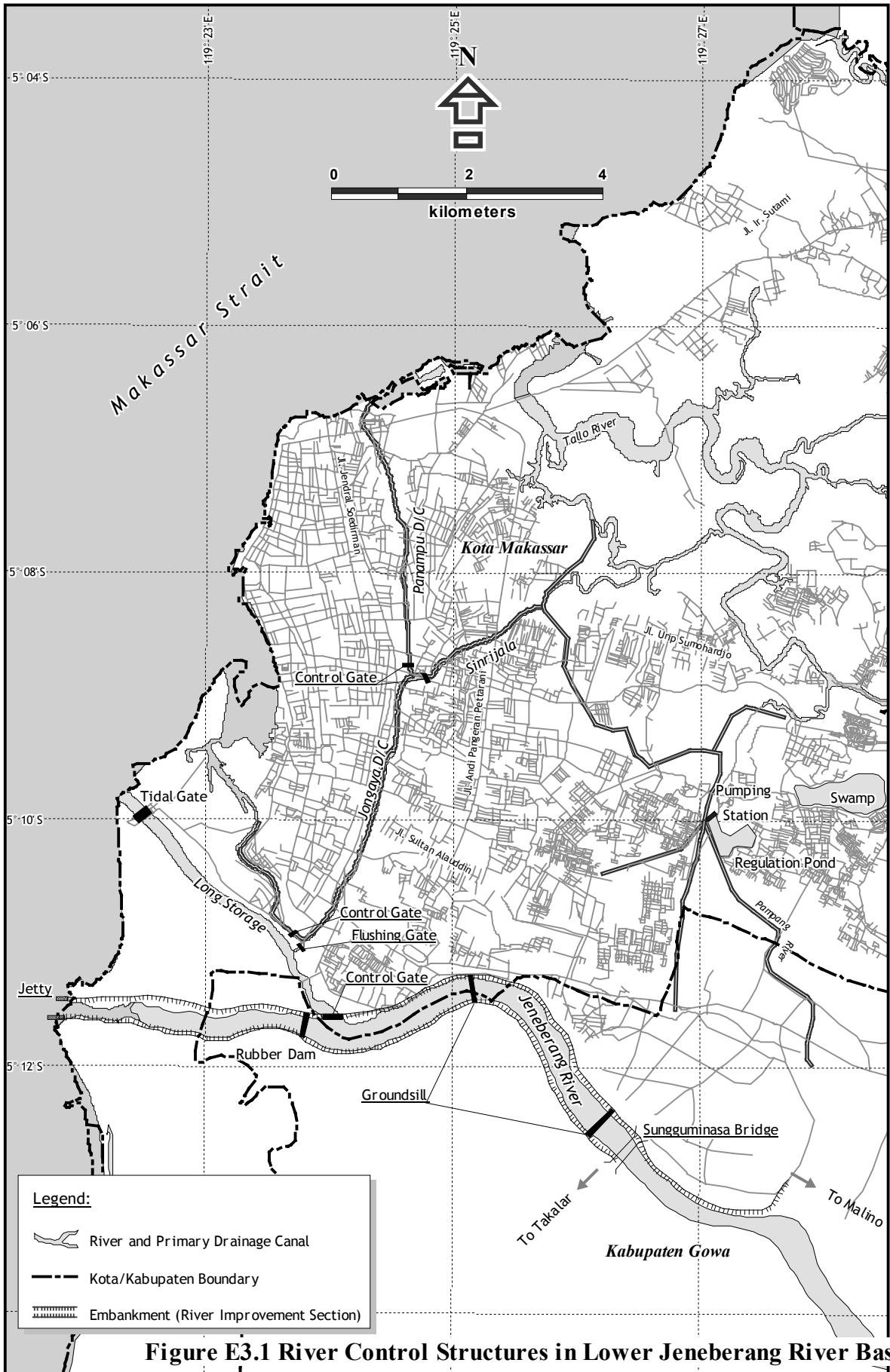


Figure E2.3 Change of River Bed of Jeneberang River



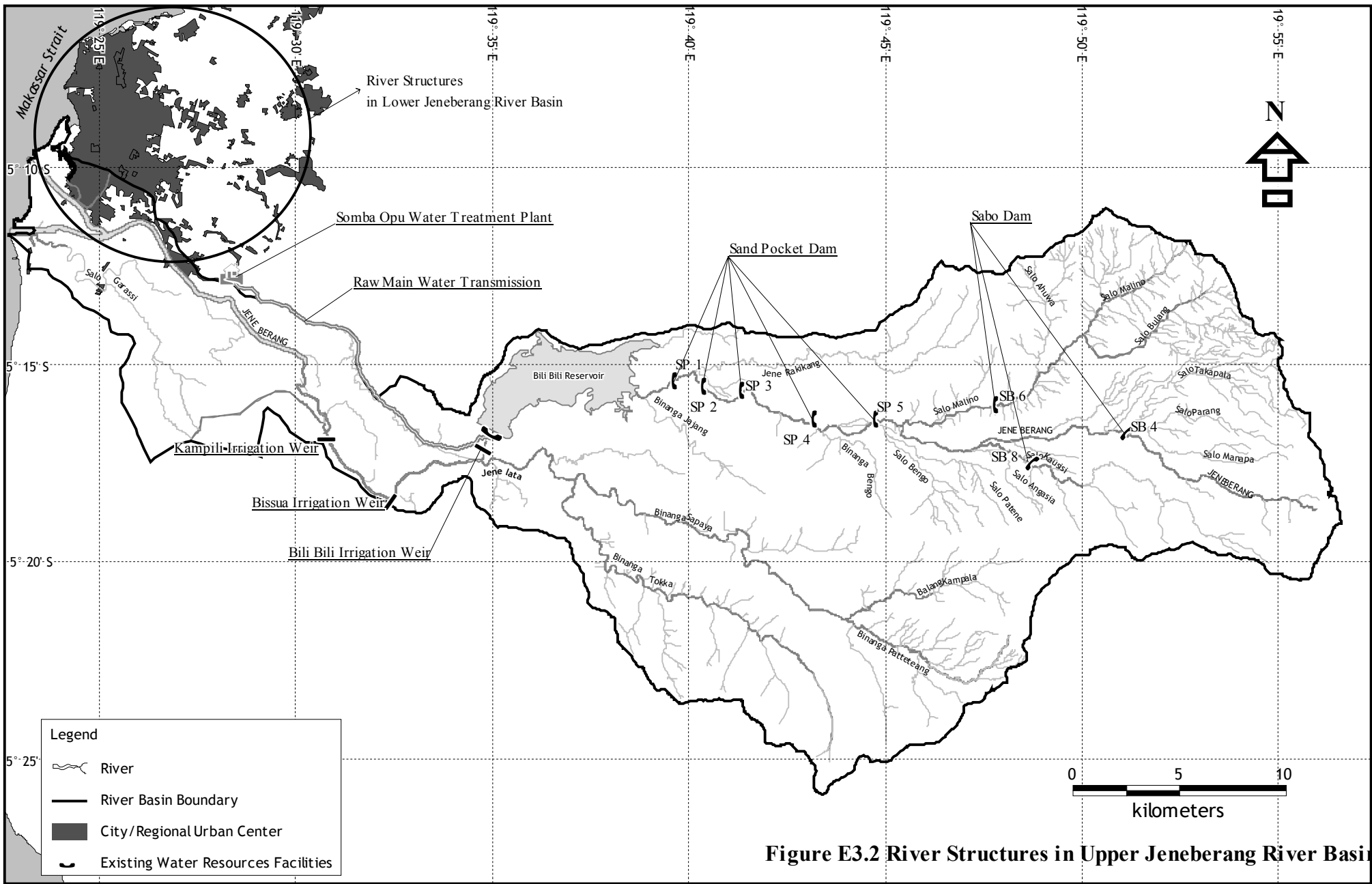
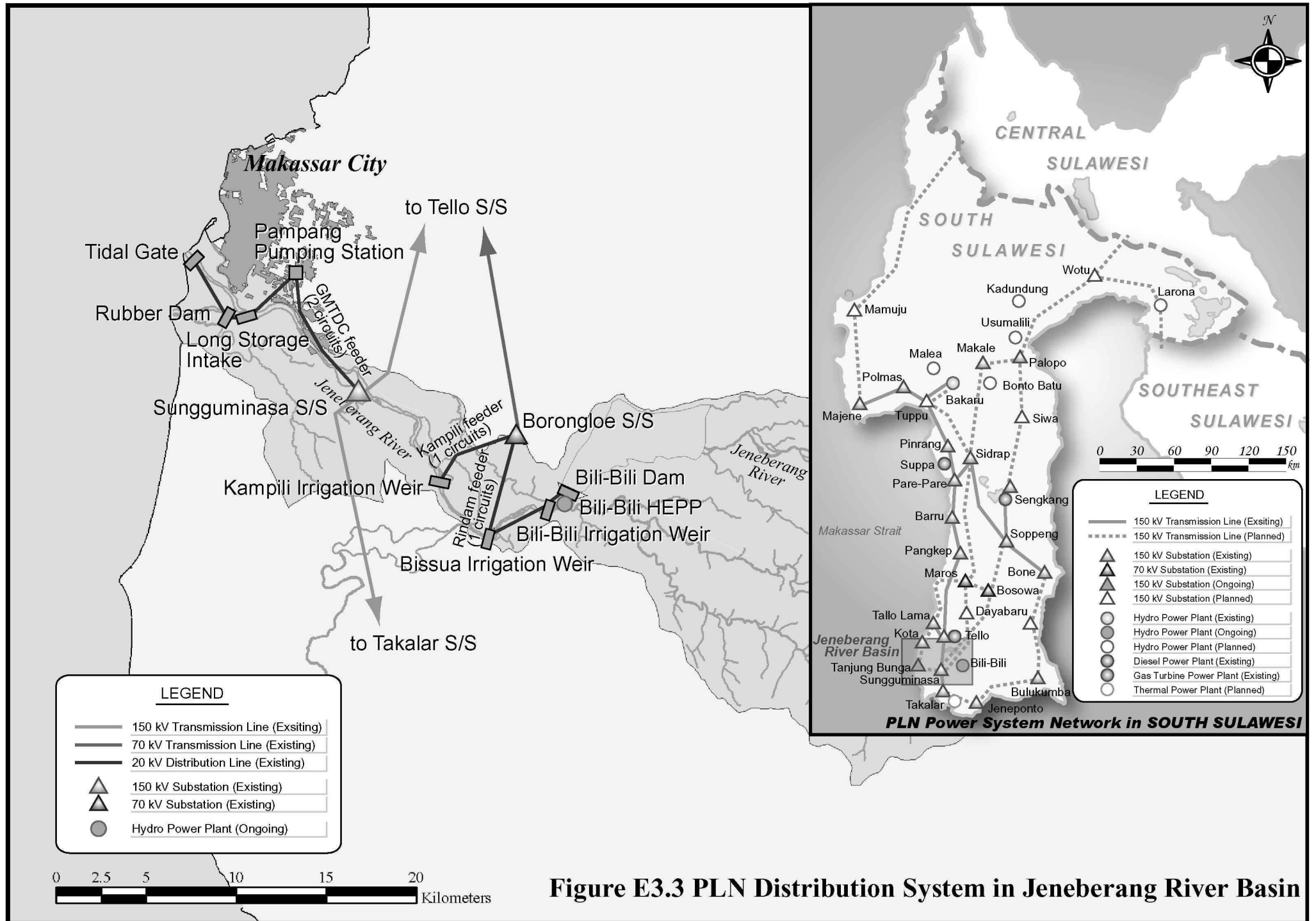
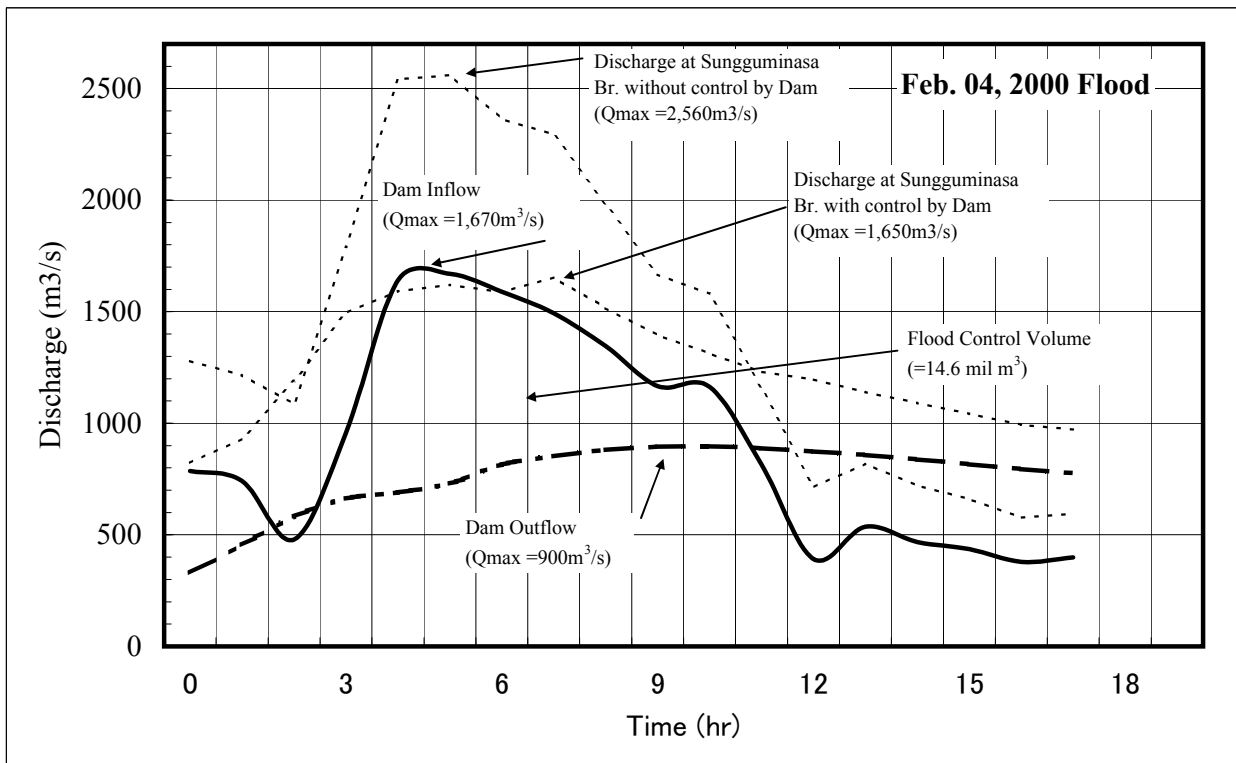
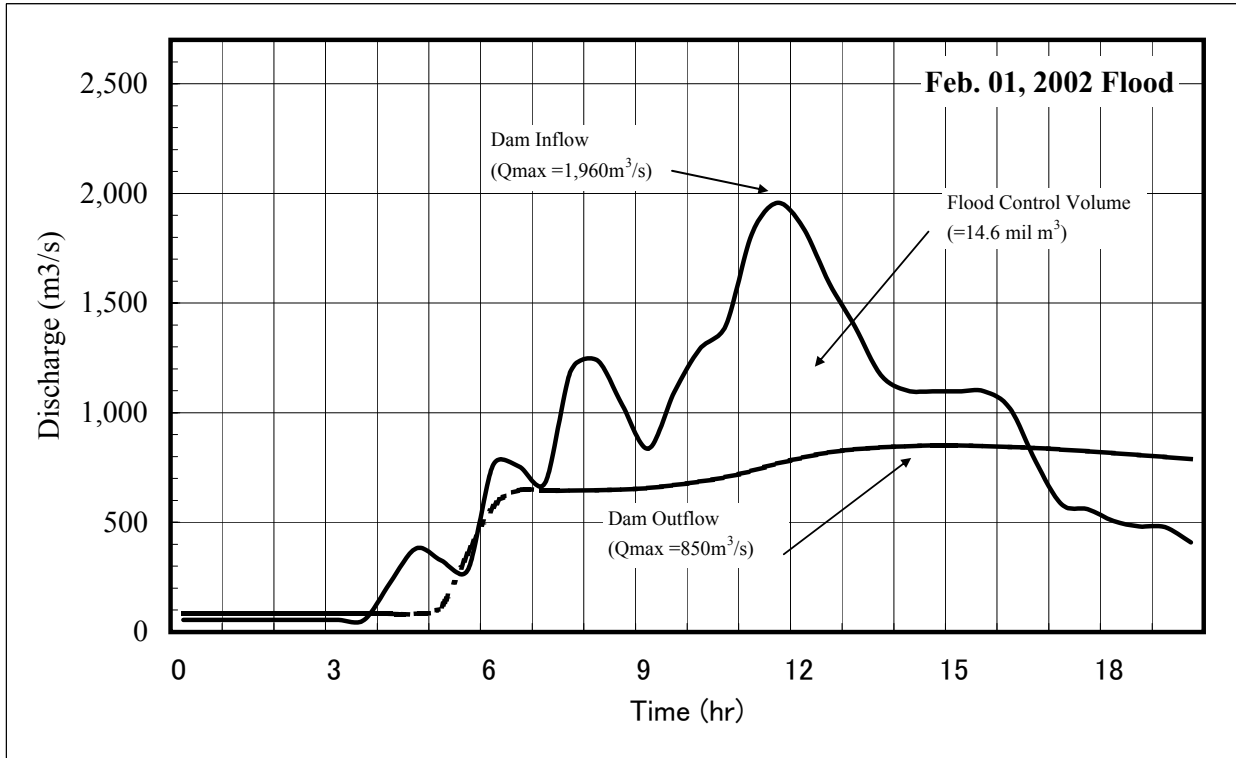


Figure E3.2 River Structures in Upper Jeneberang River Basin

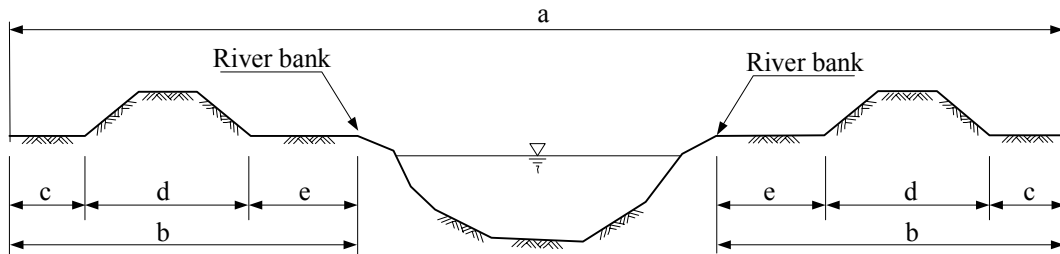


**Figure E3.3 PLN Distribution System in Jeneberang River Basin**



**Figure E4.1 Results of Flood Control by Bili- Bili Dam**

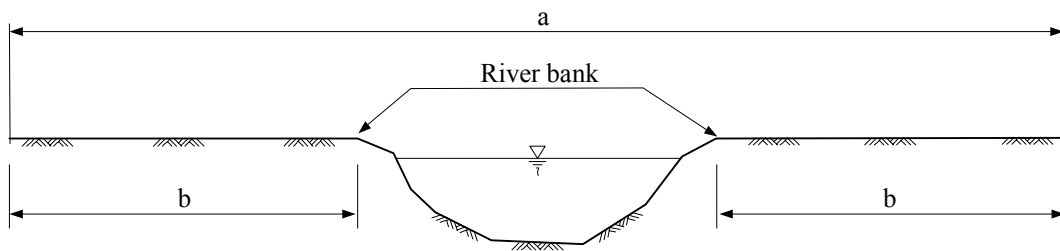
### River with Dike



Notes:

- a : River area to be managed by Public Corporation
- b : River Corridor
- c :  $W = 3\text{m}$  in urban area,  $W = 5\text{m}$  in rural area
- d : River dike area
- e : Flood channel

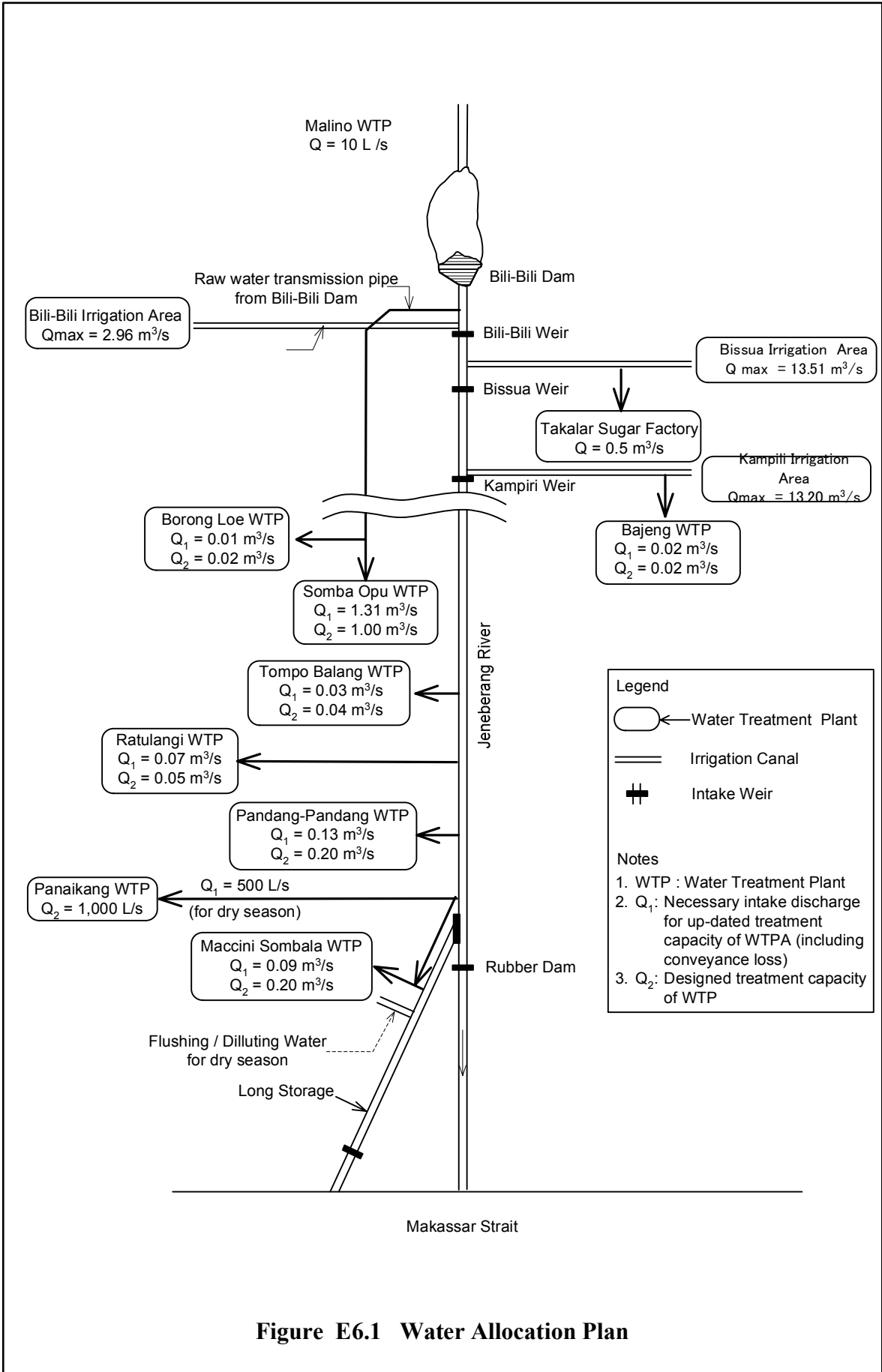
### River without Dike



Notes:

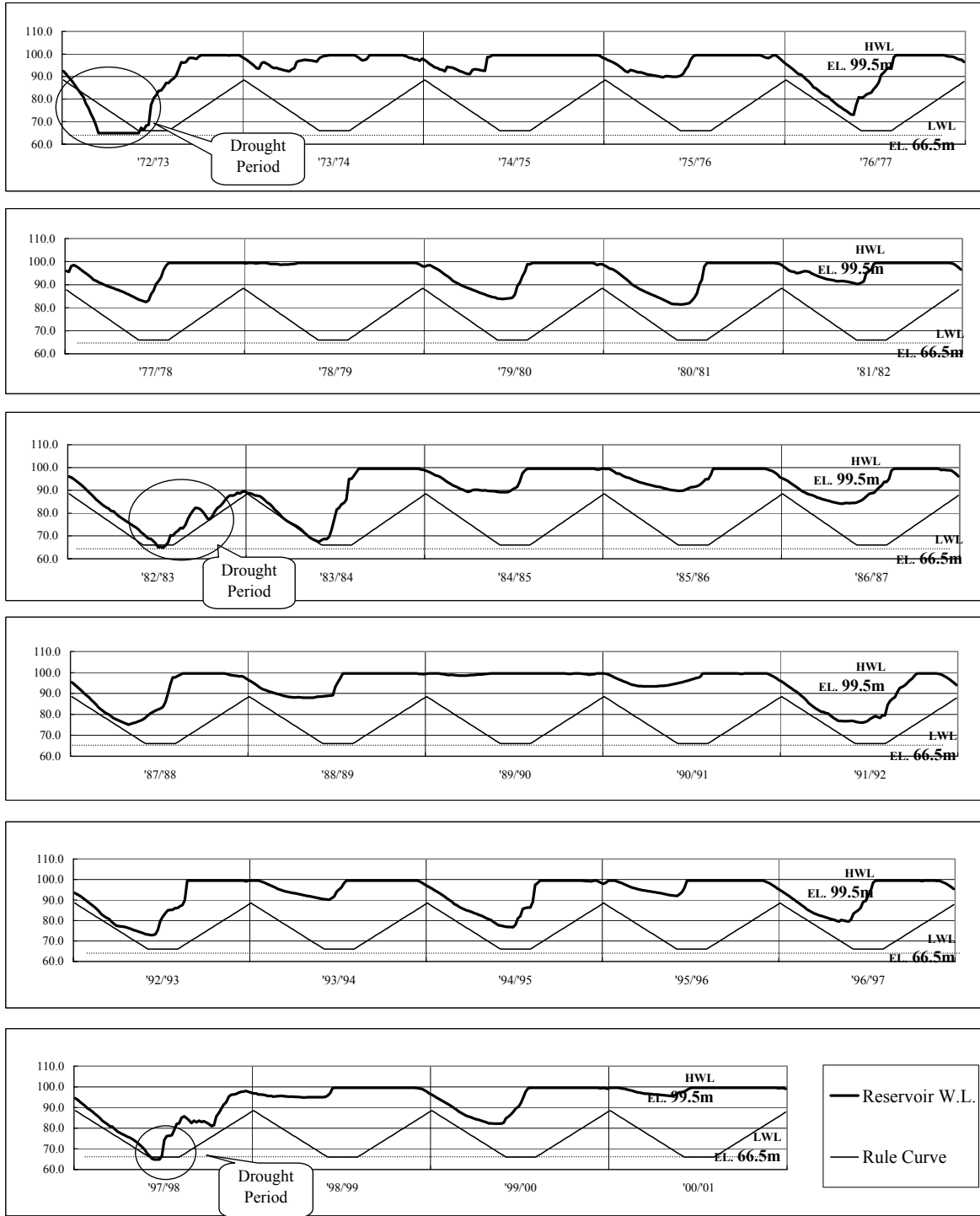
- a : River area to be managed by Public Corporation
- b : River corridor (  $W = 100\text{ m}$  (  $A > 500\text{ km}^2$  ),  $W = 50\text{ m}$  (  $A < 500\text{ km}^2$  ) )

**Figure E4.2 River Area to be Managed by Public Corporation**

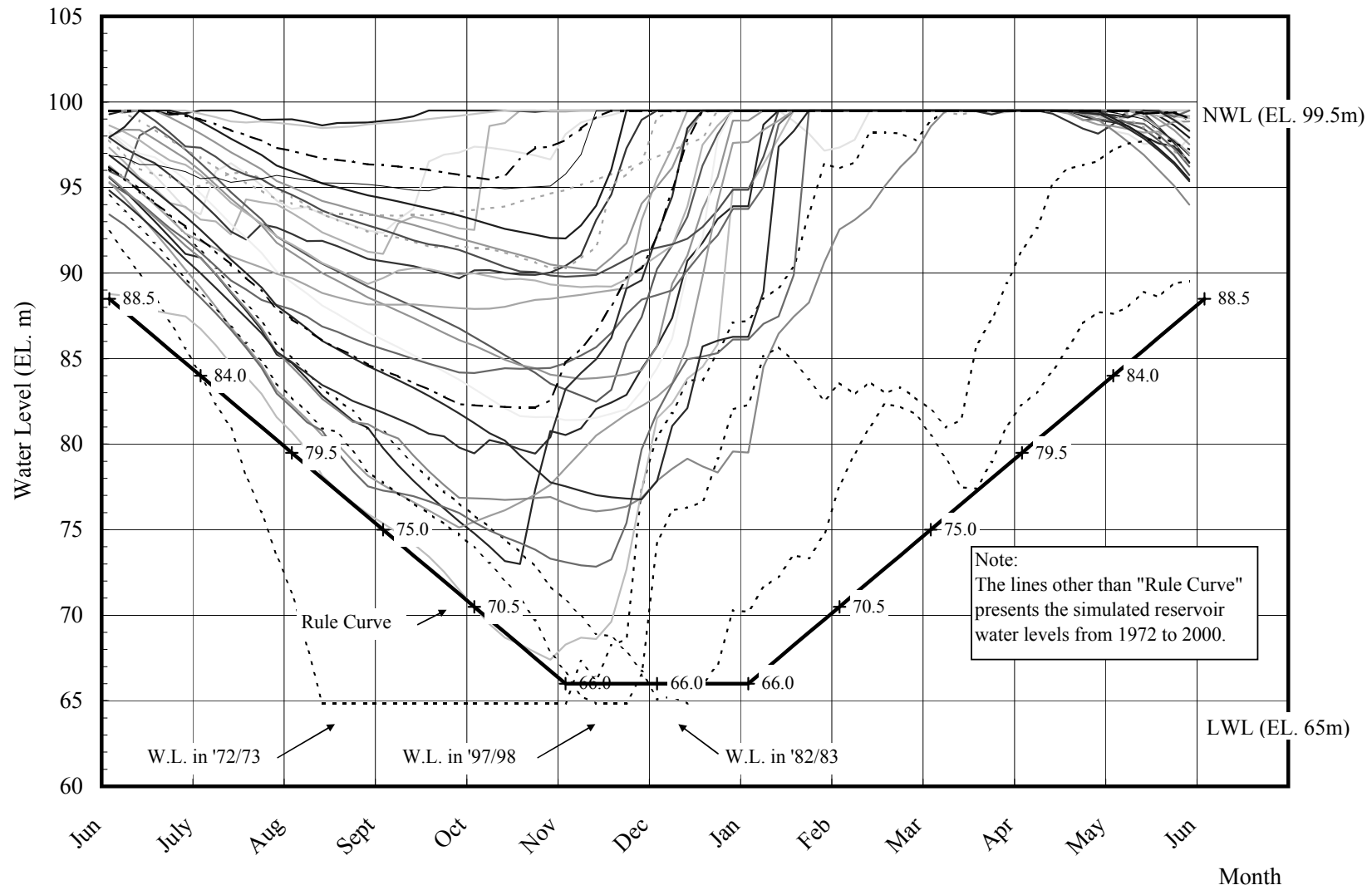


**Figure E6.1 Water Allocation Plan**

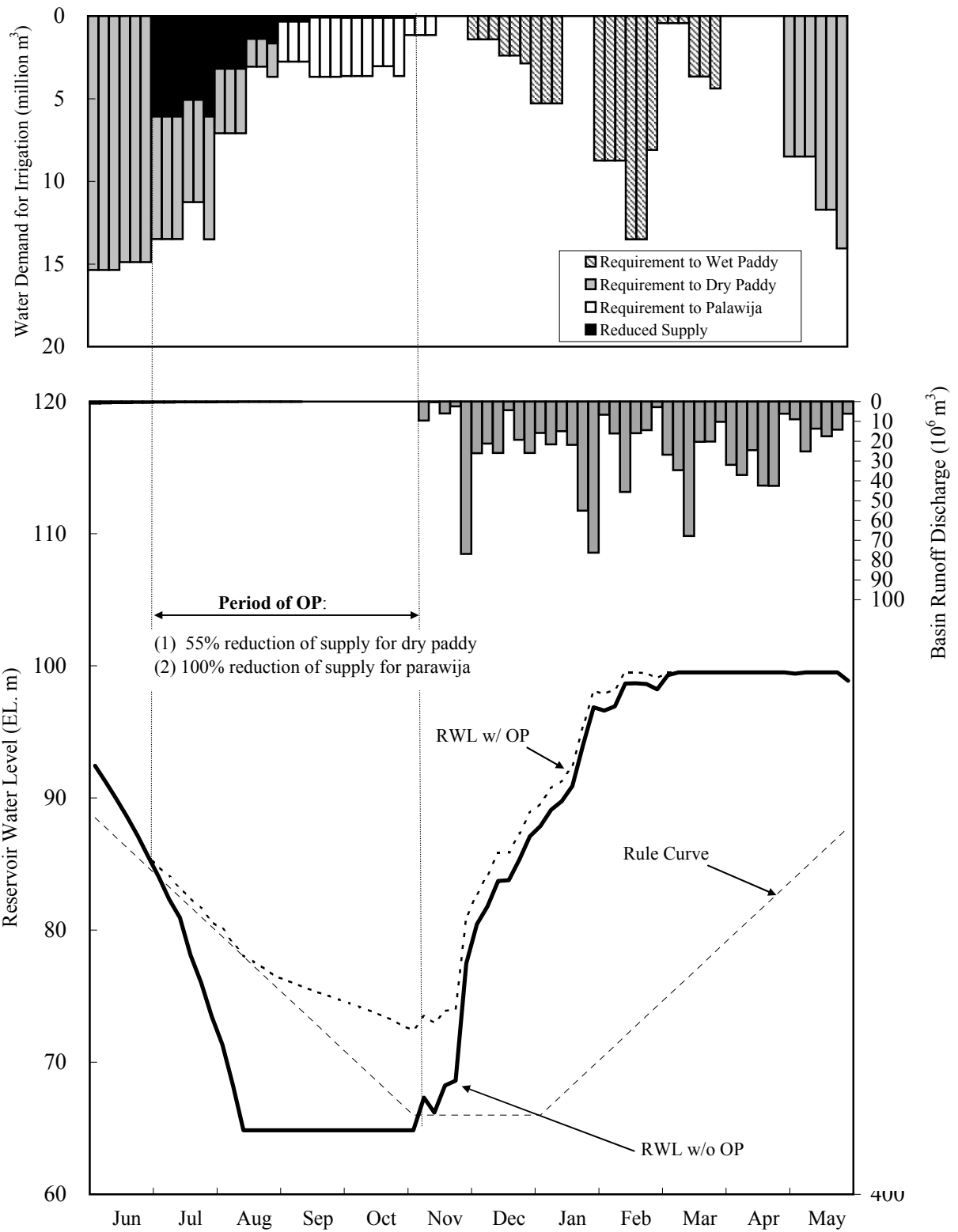




**Figure E6.2 Fluctuation of Reservoir Water Levels**



**Figure E6.3 Simulated Reservoir Water Level and Rule Curve**



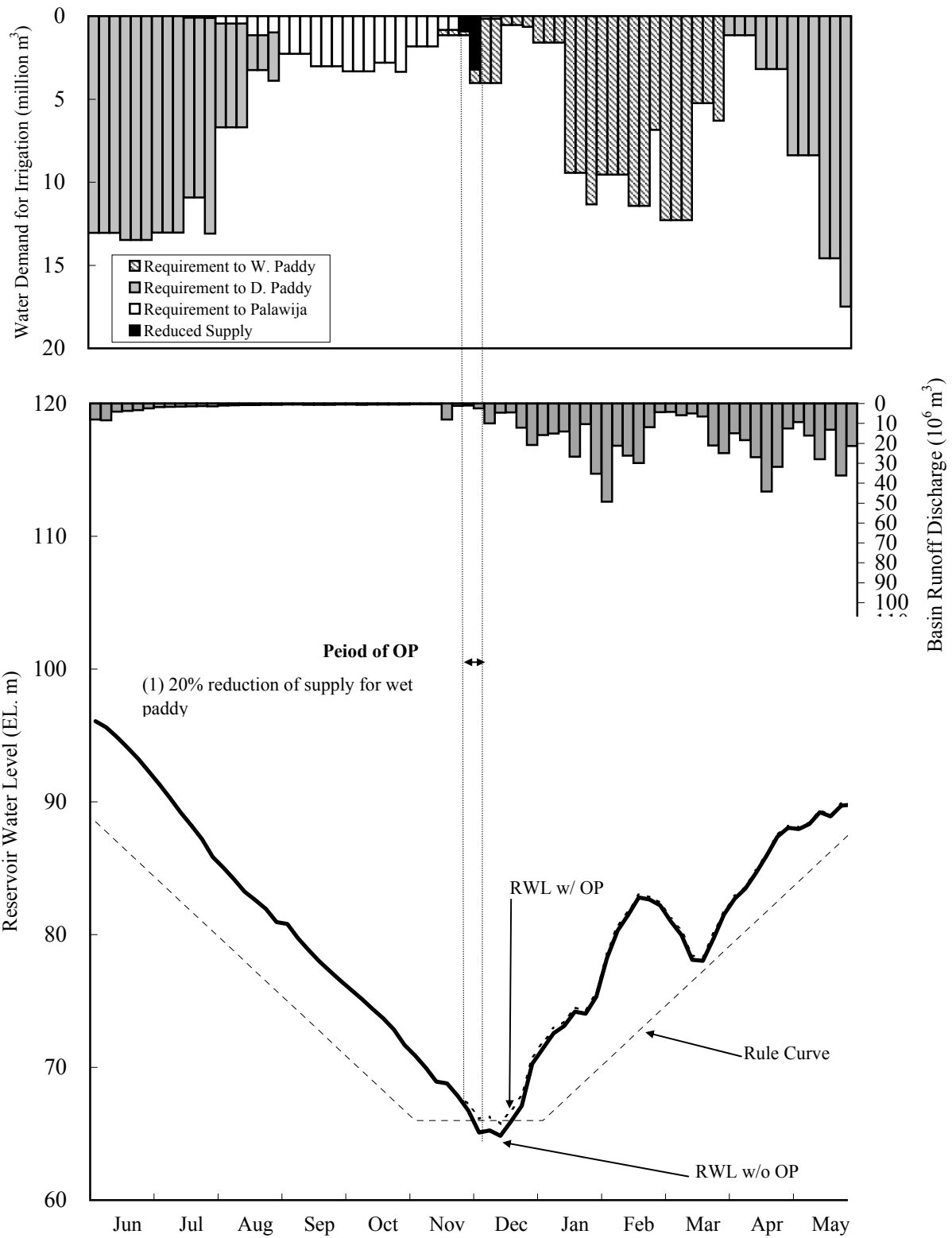
Note:

RWL : Reservoir Water Level

OP: Reservoir Operation Applied to Drought

**Figure E6.4 (1/3)**

**Reservoir Water Level with- and without  
Drought Operation against Flow Regime in 1972**



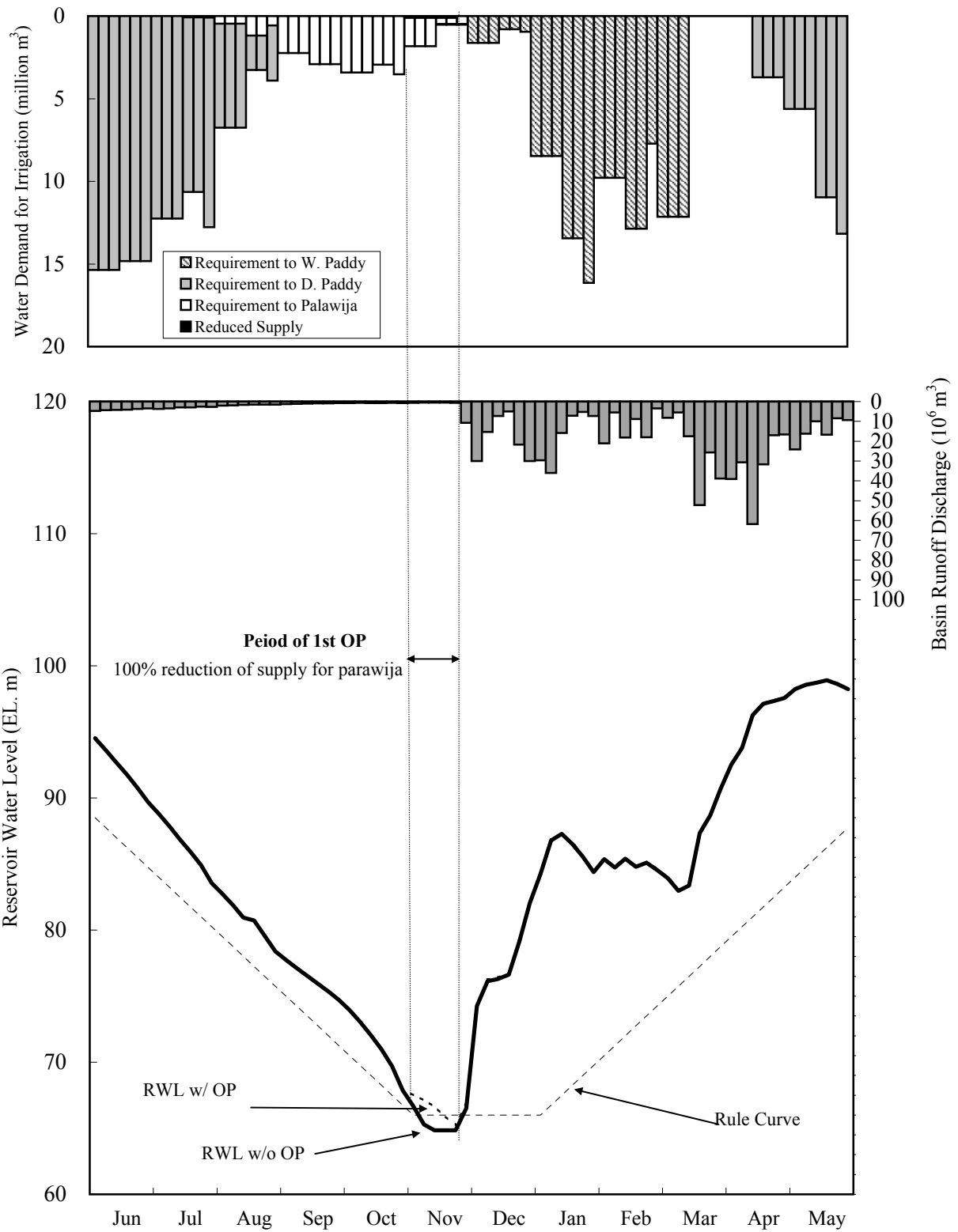
Note:

RWL : Reservoir Water Level

OP: Reservoir Operation Applied to Drought

**Figure E6.4 (2/3)**

**Reservoir Water Level with- and without  
Drought Operation against Flow Regime in 1982**



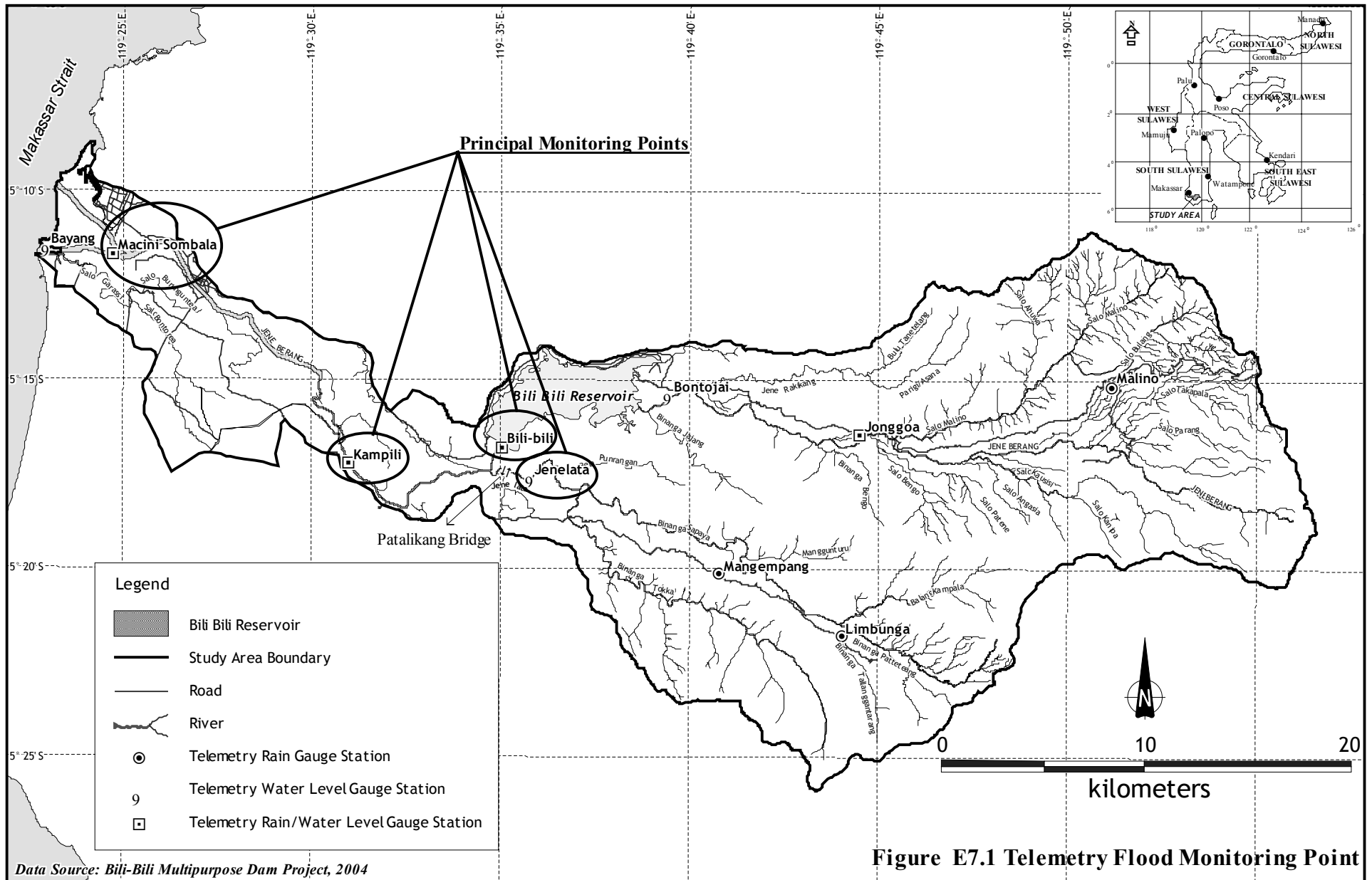
**Figure E6.4 (3/3)**

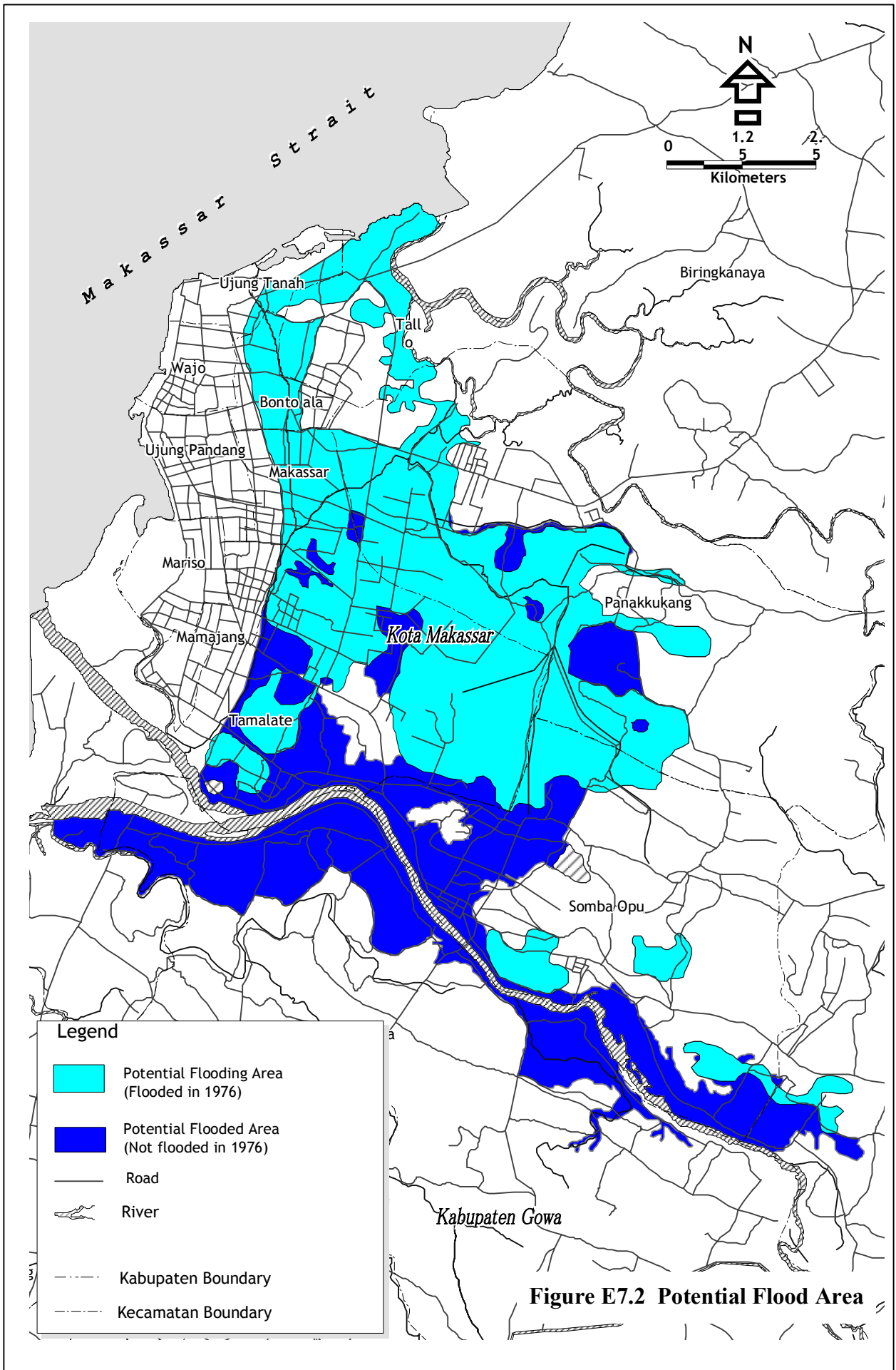
**Reservoir Water Level with- and without  
Drought Operation against Flow Regime in 1997/1998**

Note:

RWL : Reservoir Water Level

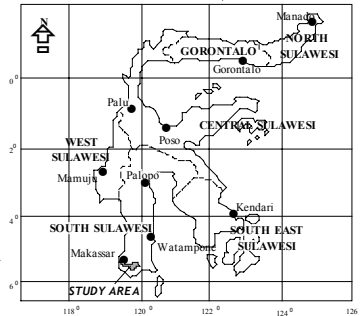
OP: Reservoir Operation Applied to Drought





List of Rivers to be Managed

River	Total River Length (km)	Catchment Area (sq km)	River Stretch to be Managed
Jeneberang	85.50	762.01	River Mouth-Lengkese Village (Including Long Storage)
Salo Malino	18.67	85.89	Confluence-Sabo Dam No. 6
Salo Kausisi	18.91	37.50	Confluence-Sabo Dam No. 8
Jenelata/Sapaya	38.45	232.69	Confluence-Sapaya Village
Binanga Tokka	24.26	77.53	Confluence- Sapakeke Village



EF-23

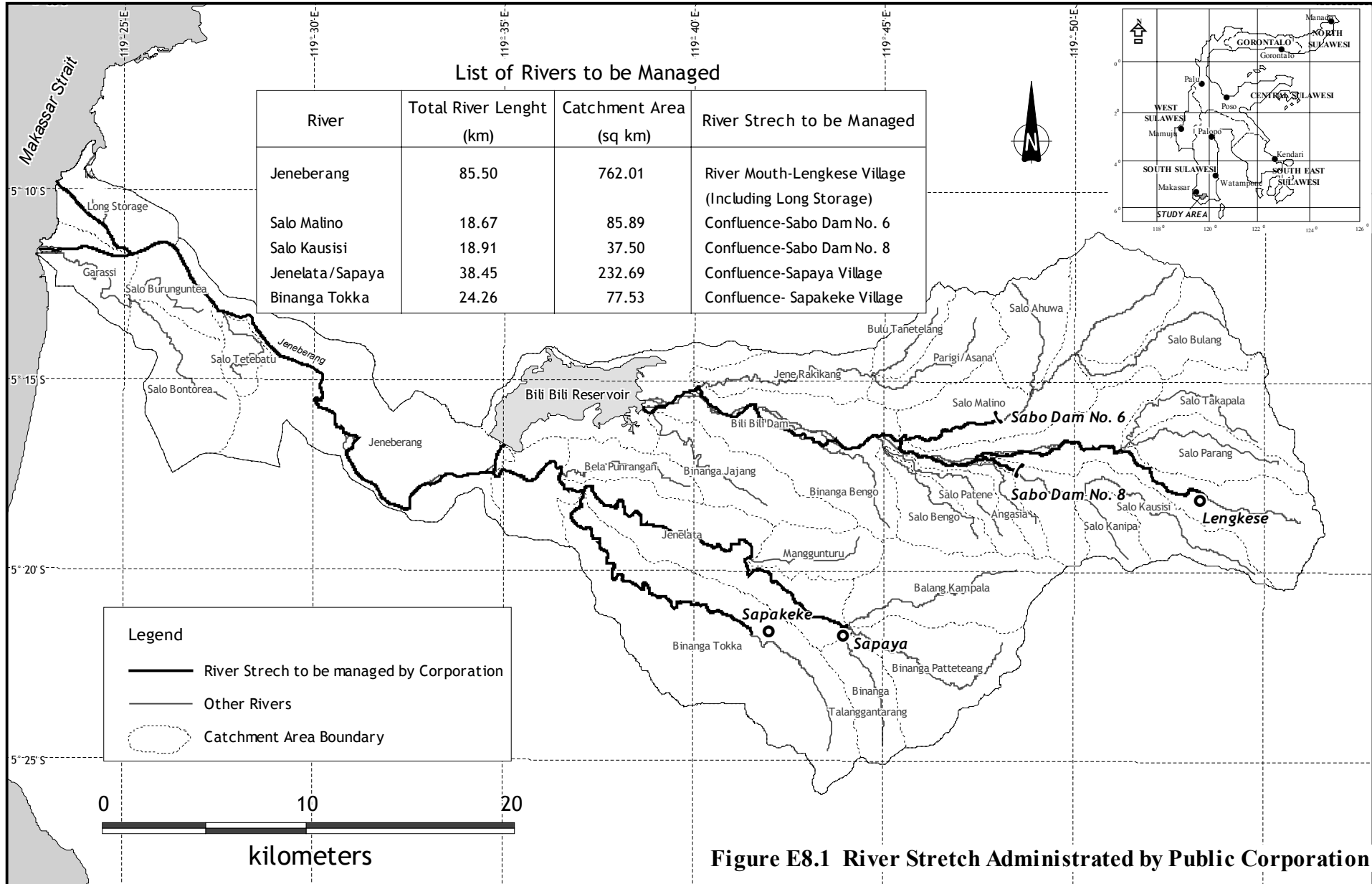
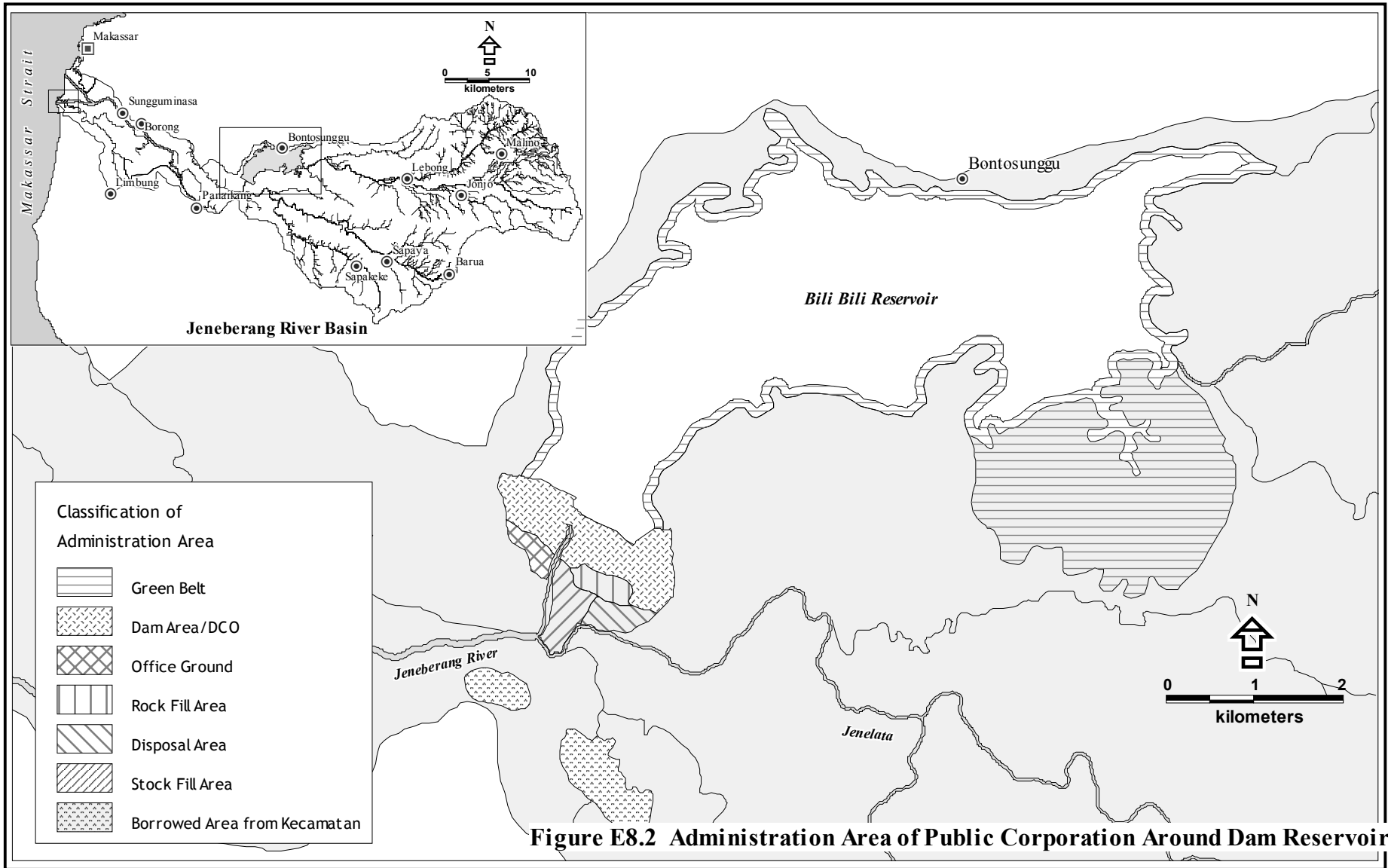
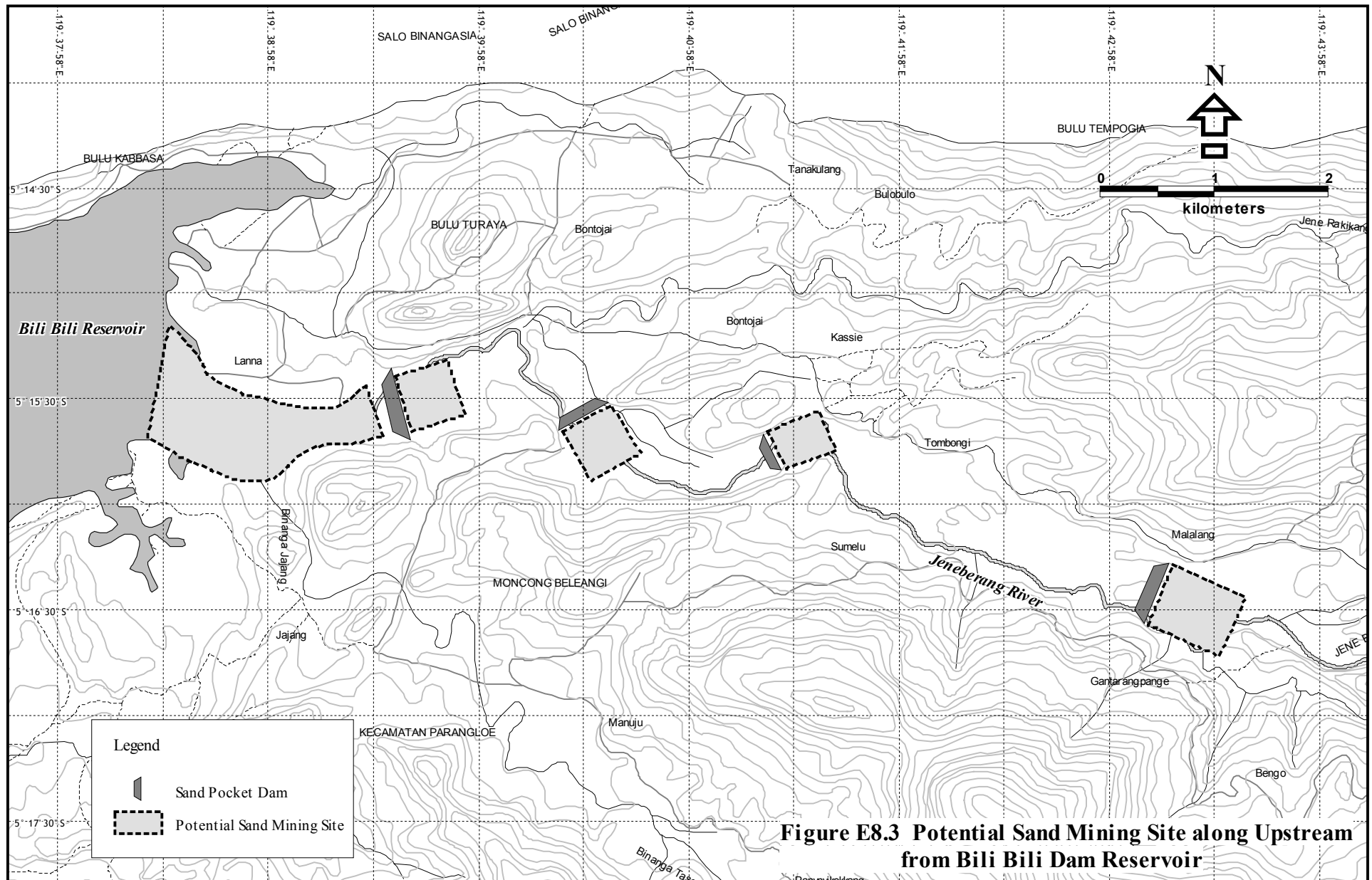


Figure E8.1 River Stretch Administrated by Public Corporation





**Figure E8.2 Administration Area of Public Corporation Around Dam Reservoir**



**Figure E8.3 Potential Sand Mining Site along Upstream from Bili Bili Dam Reservoir**

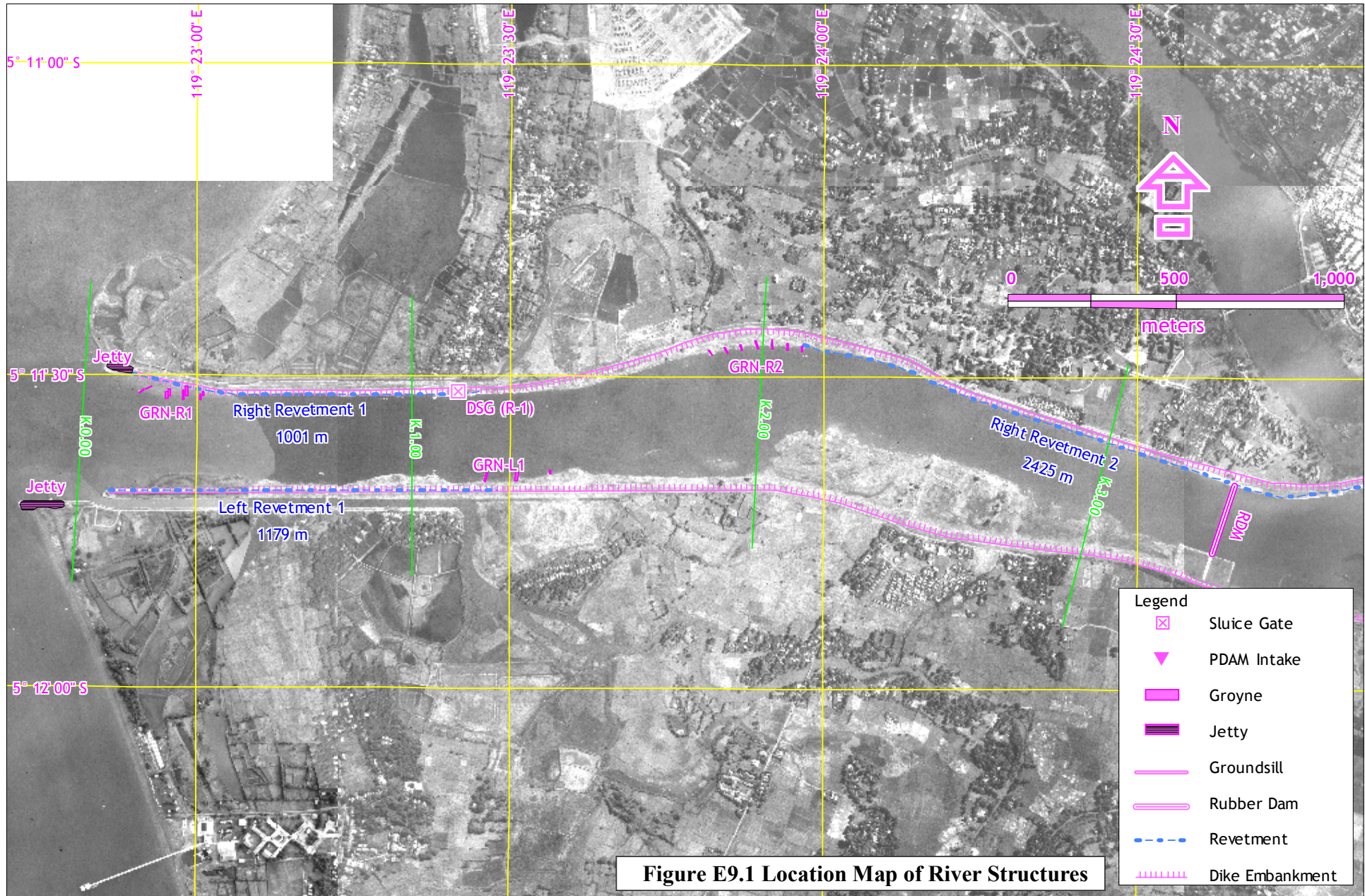


Figure E9.1 Location Map of River Structures

