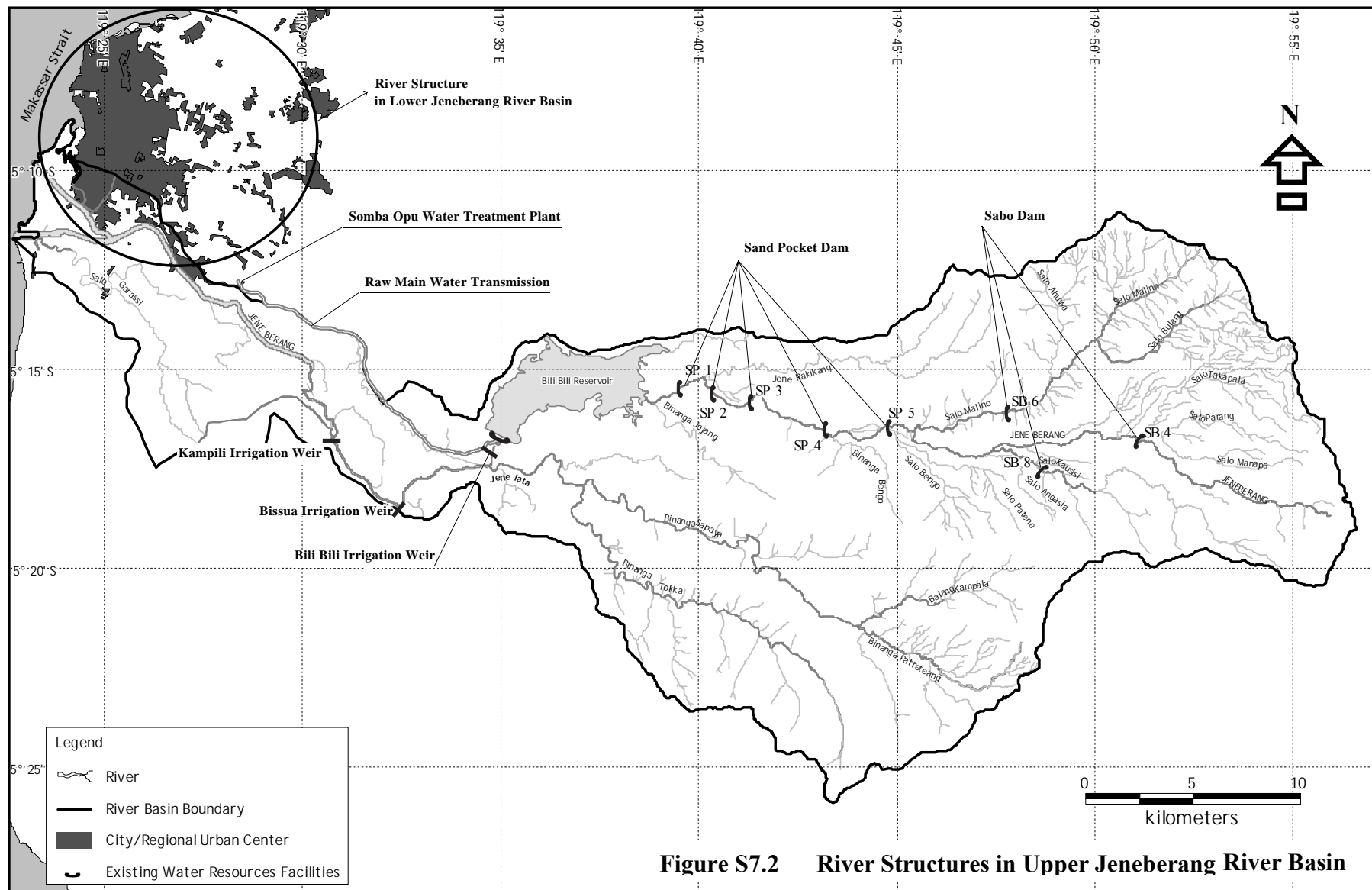


SF-9



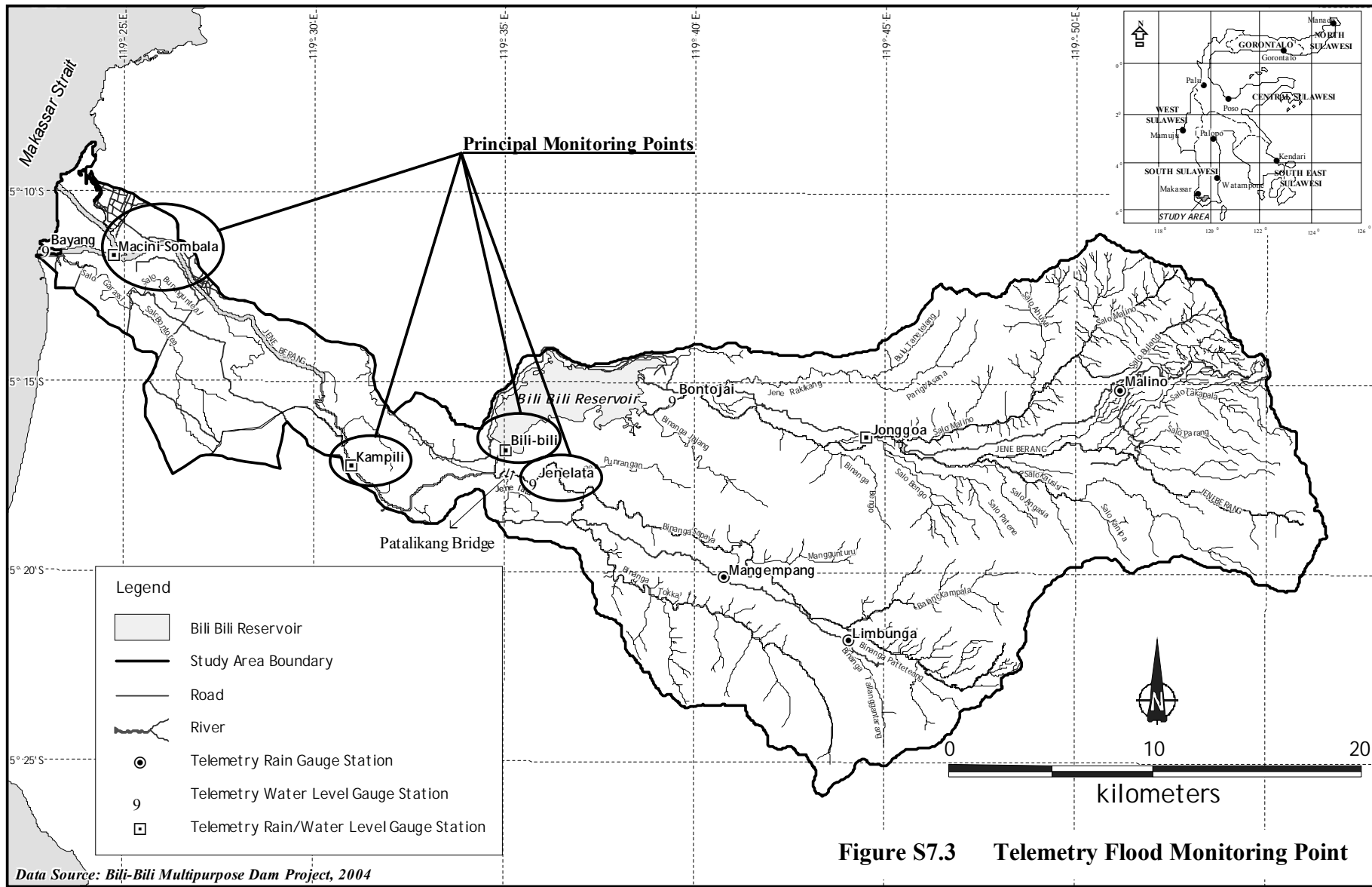
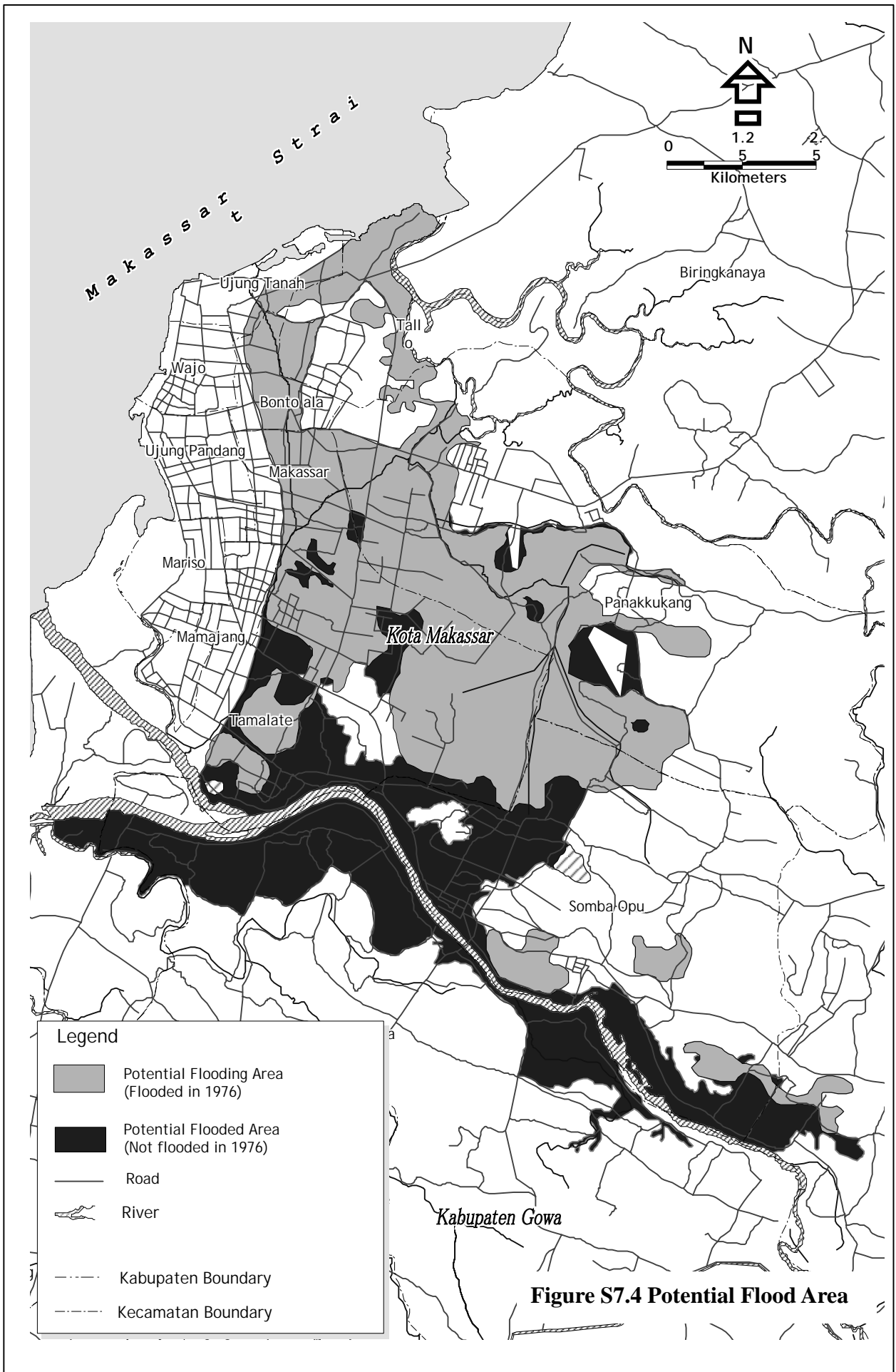


Figure S7.3 Telemetry Flood Monitoring Point



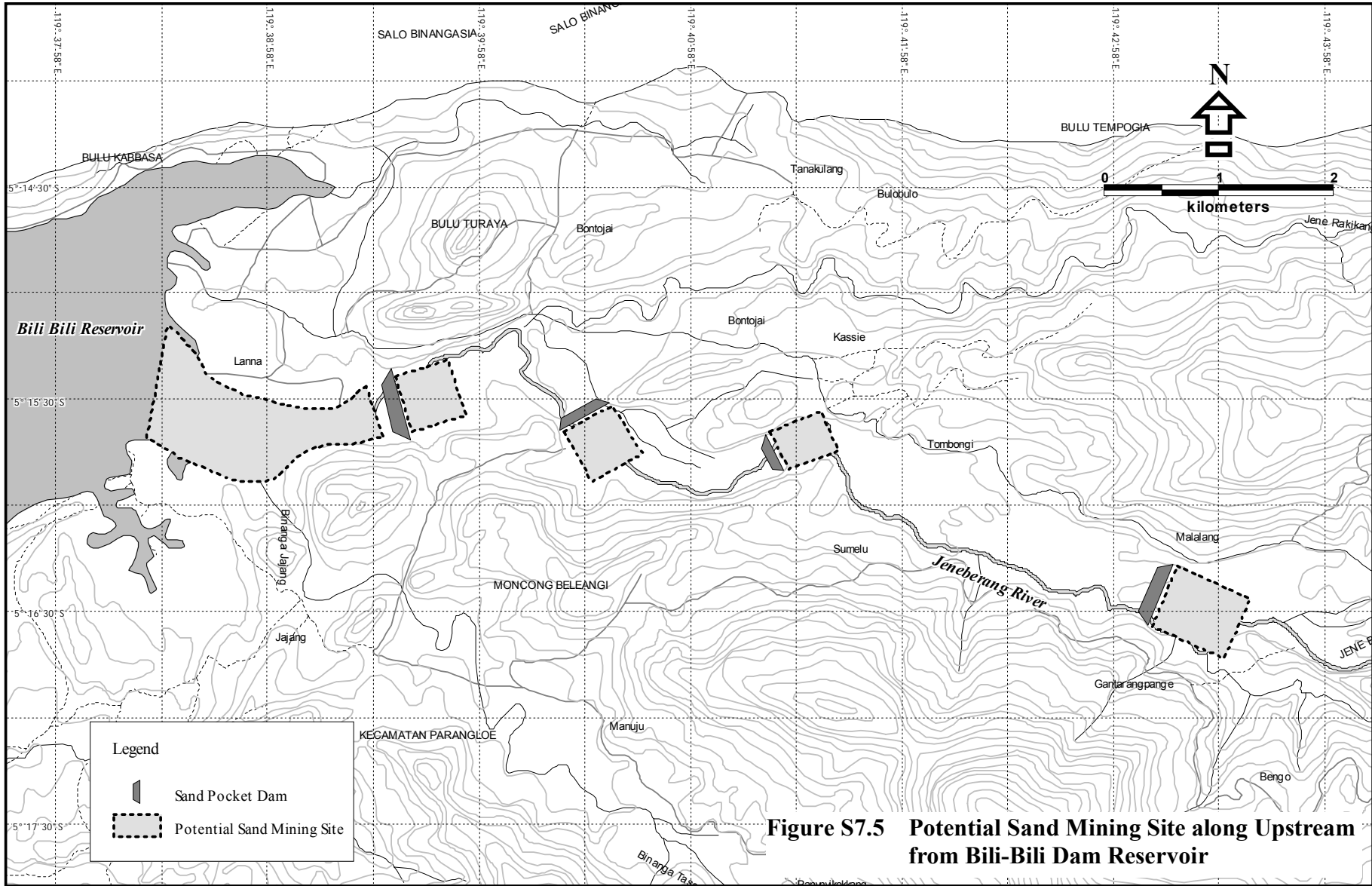


Figure S7.5 Potential Sand Mining Site along Upstream from Bili-Bili Dam Reservoir

SF-13

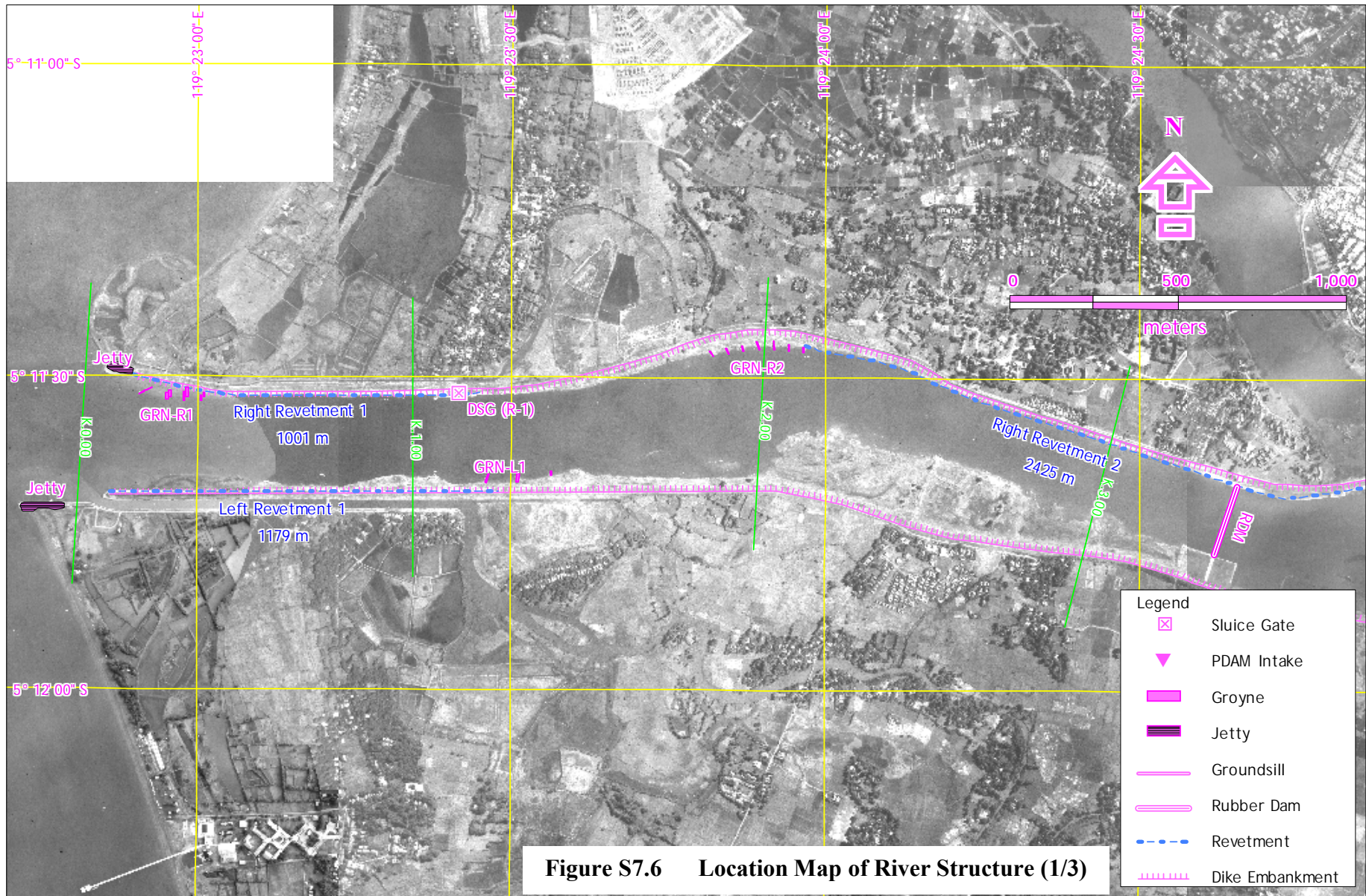


Figure S7.6 Location Map of River Structure (1/3)

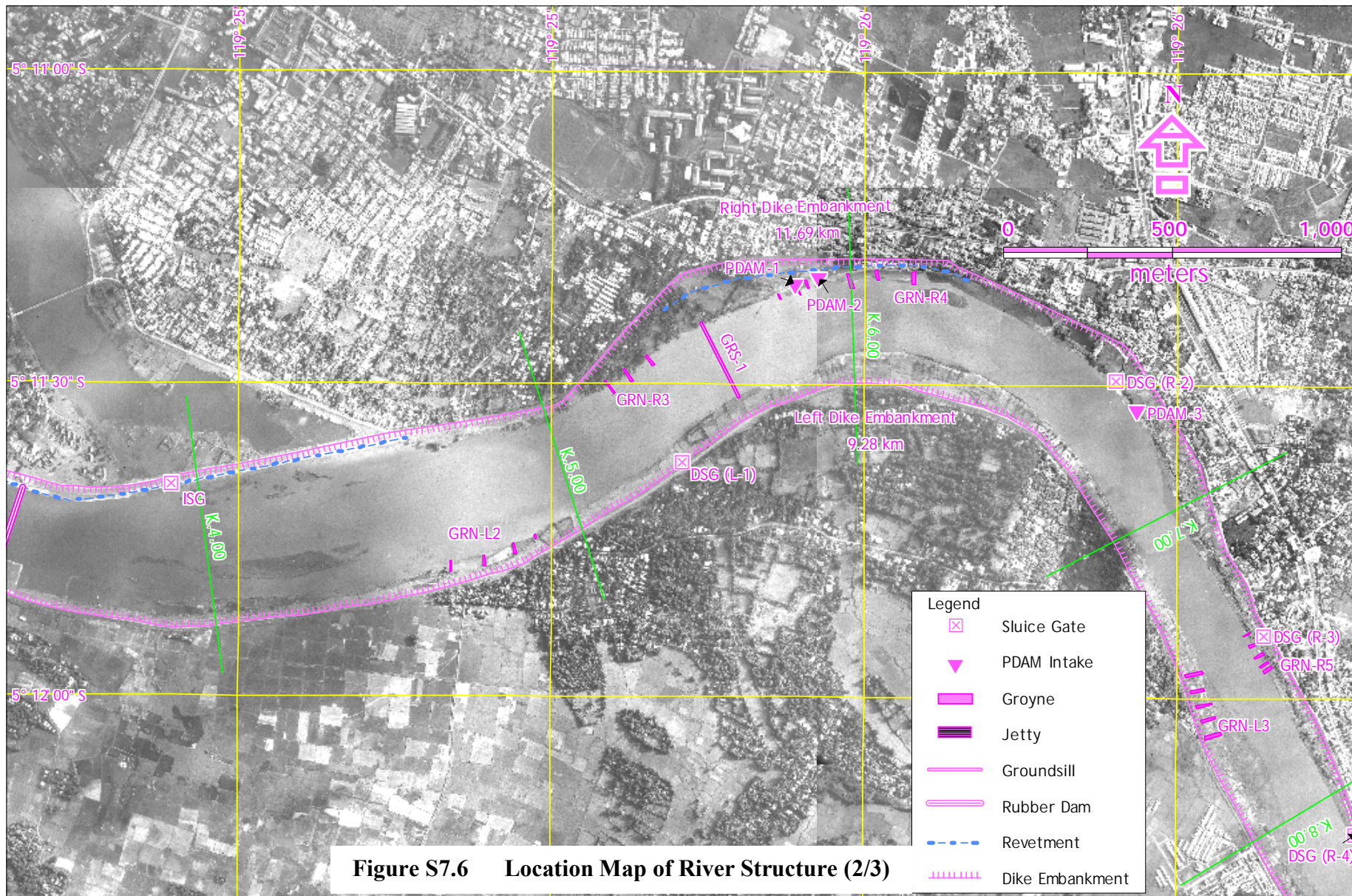


Figure S7.6 Location Map of River Structure (2/3)

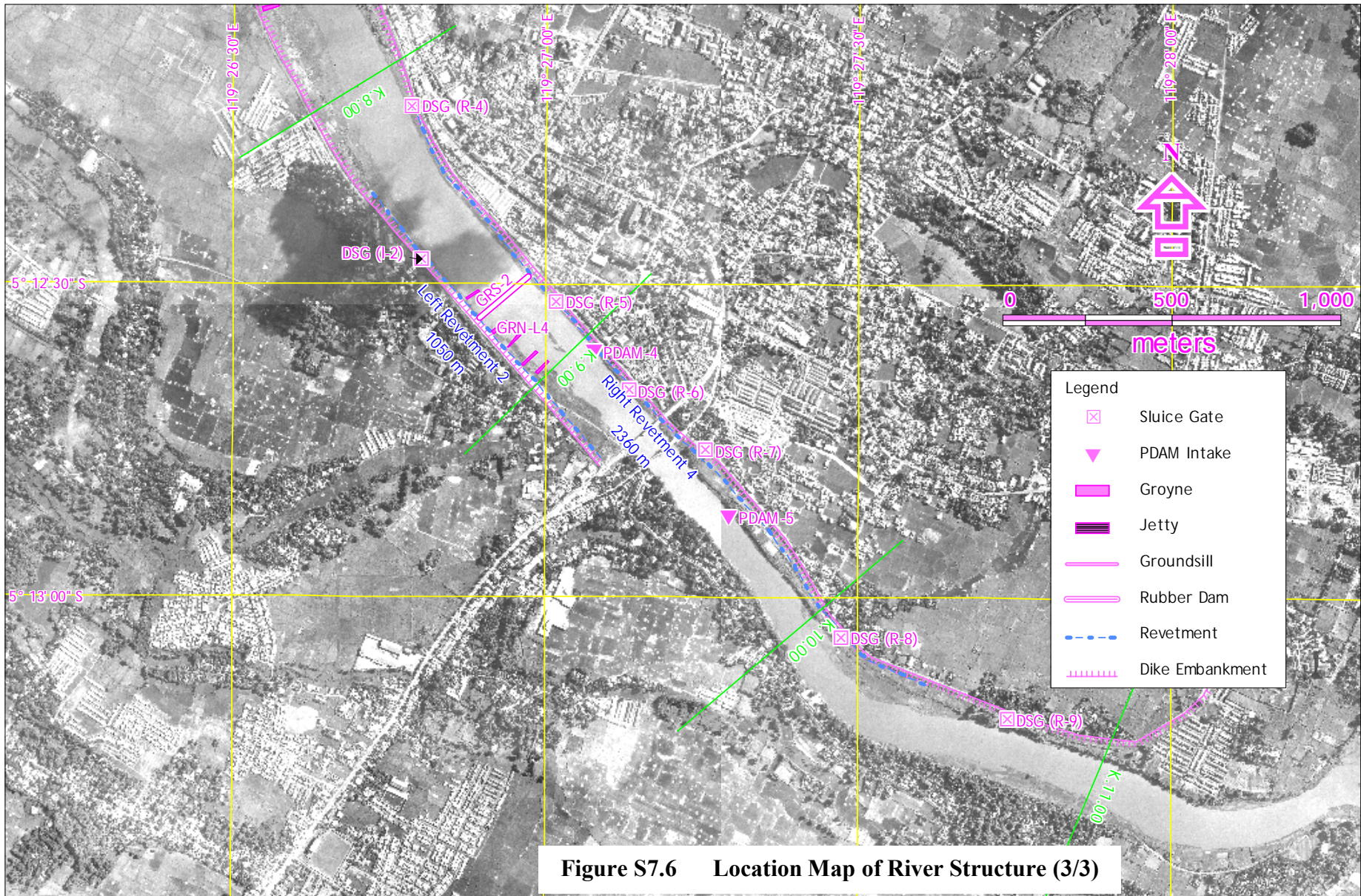
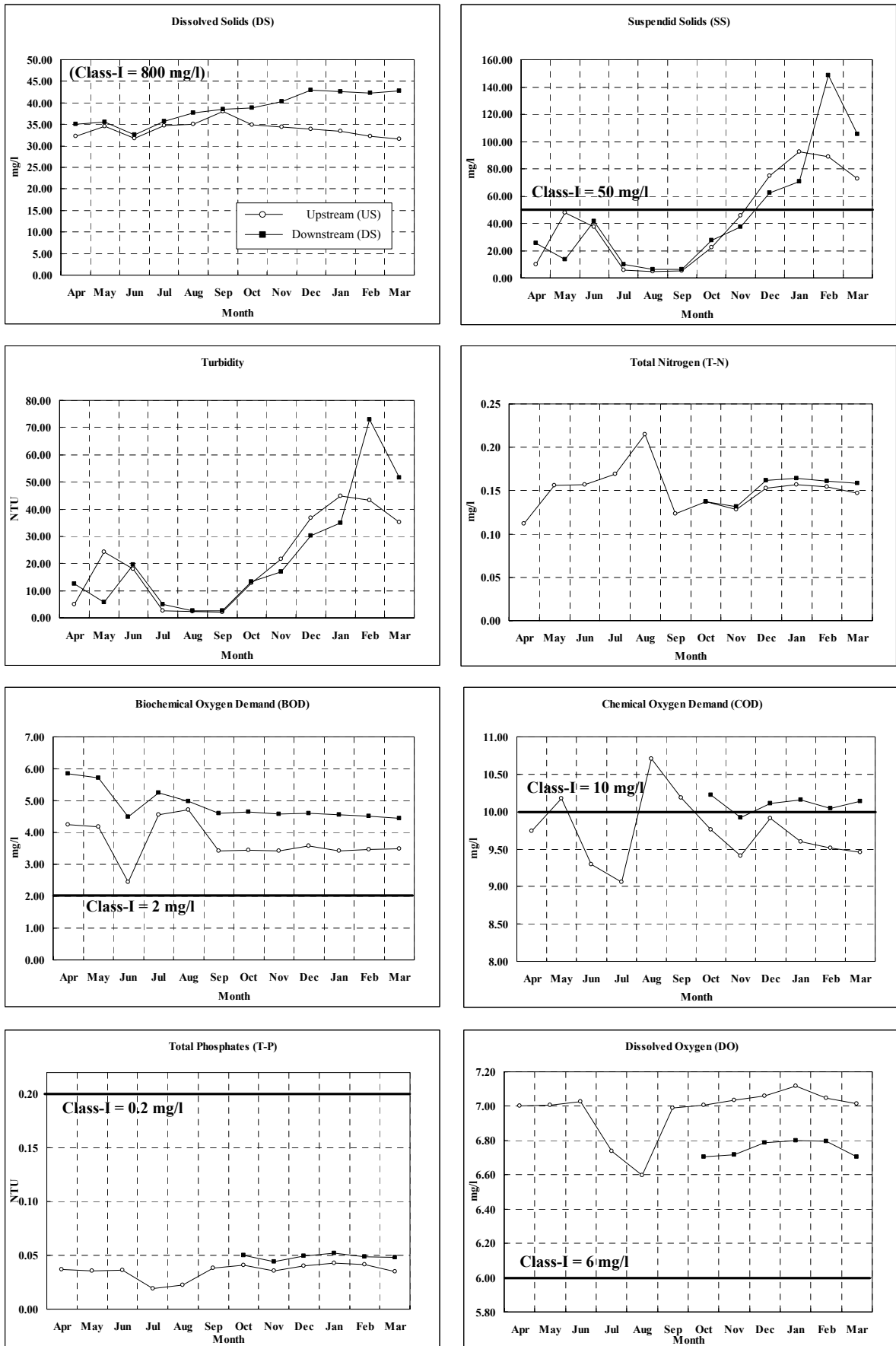
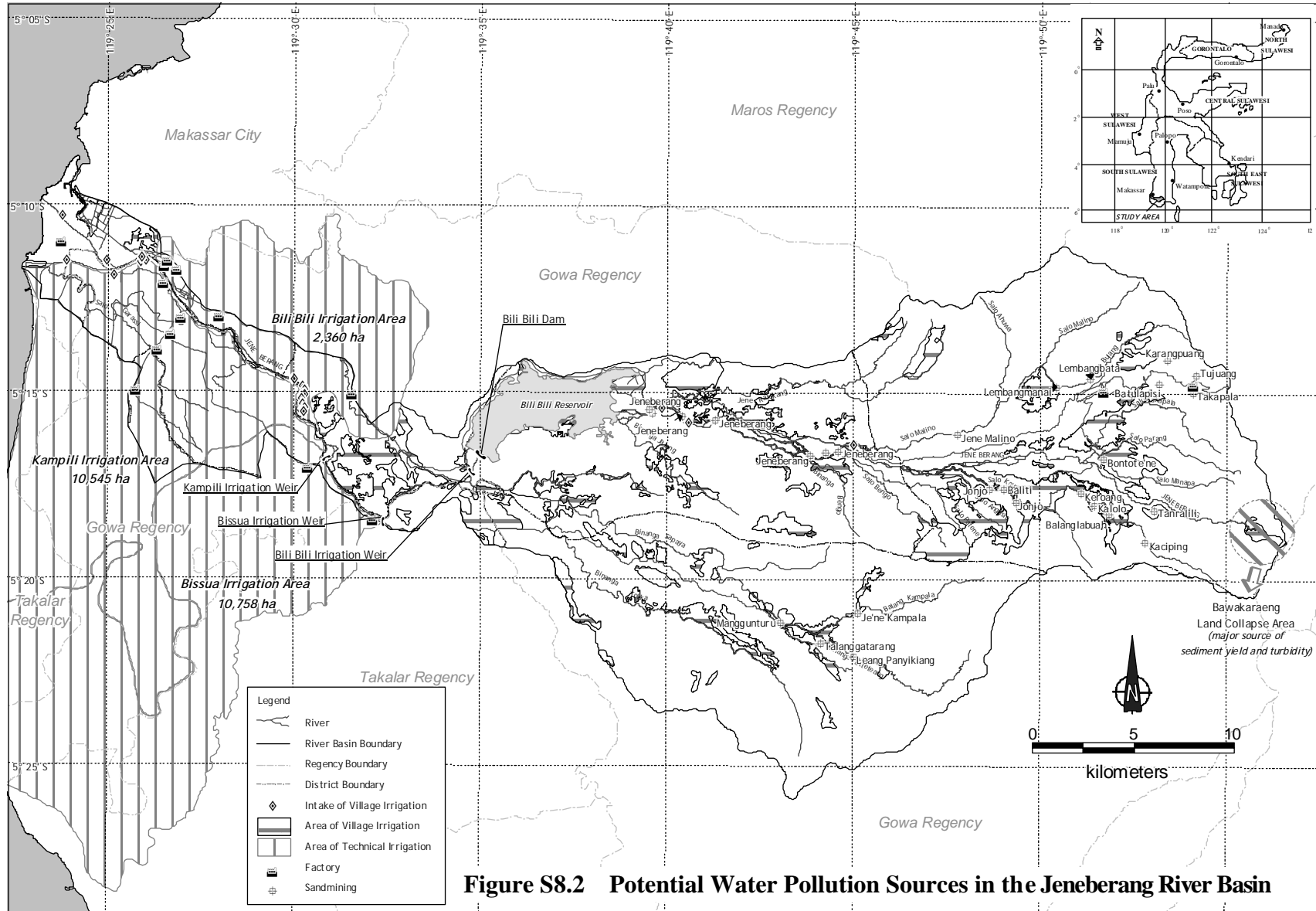


Figure S8.1 River Water Quality of the Jeneberang River - Seasonal Variation



Note: Class-I - Provincial water quality standard for drinking raw water determined by South Sulawesi Governor's Decree No.14/2003

Source: Environmental Impact Assessment of Bili-Bili Multipurpose Dam Project



Bawakaraeng
Land Collapse Area
(major source of
sediment yield and turbidity)

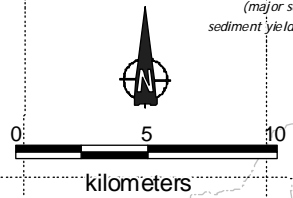
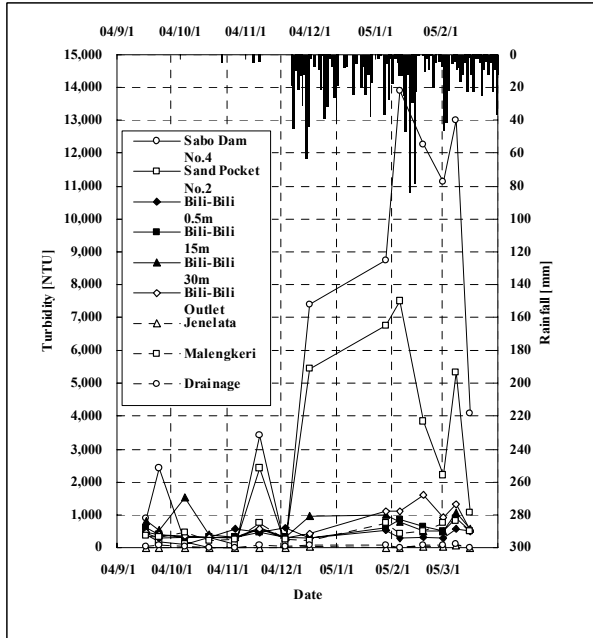
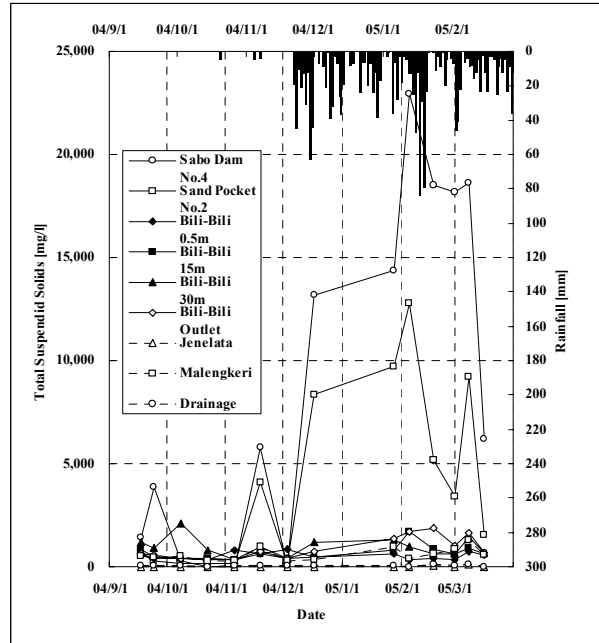


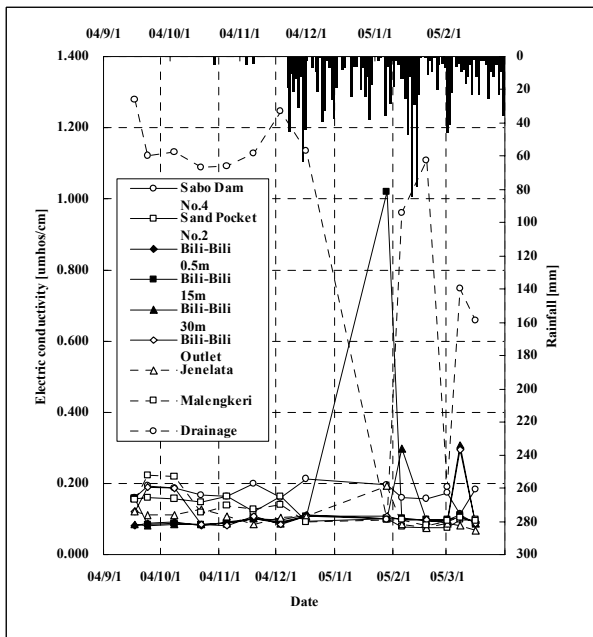
Figure S8.3 Water Quality Monitoring by This Study (2004-2005)



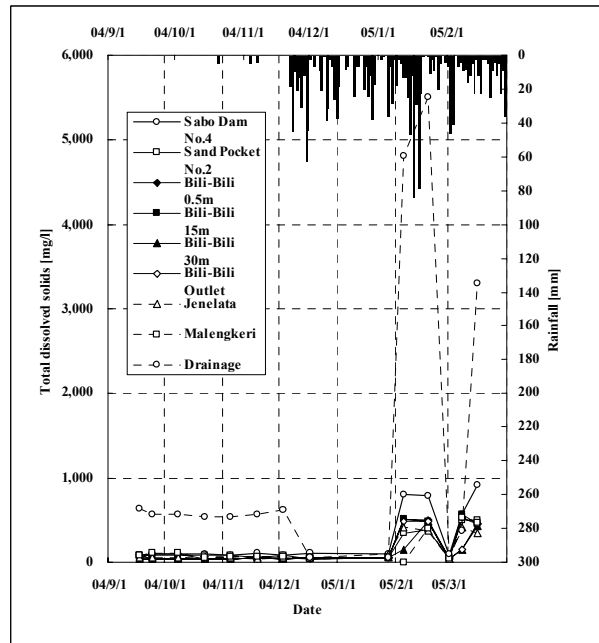
a) Turbidity



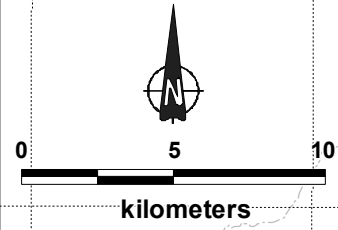
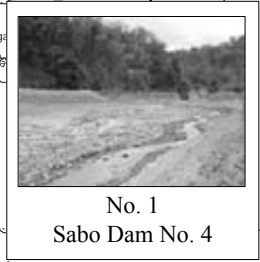
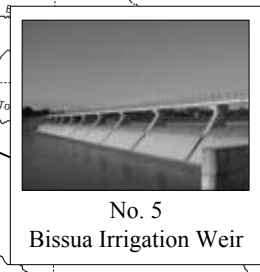
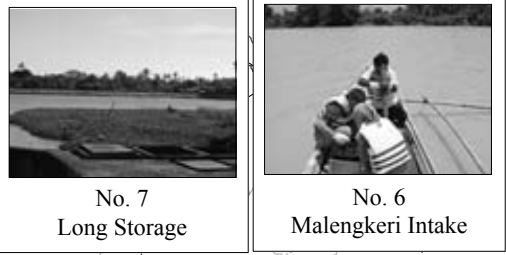
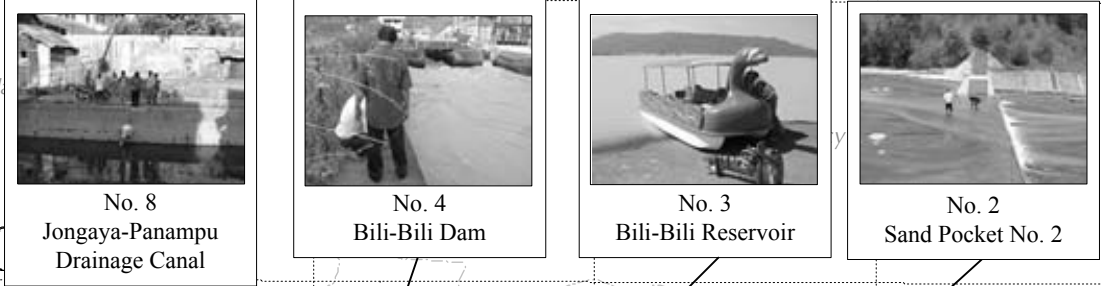
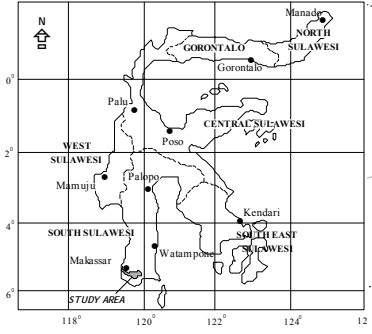
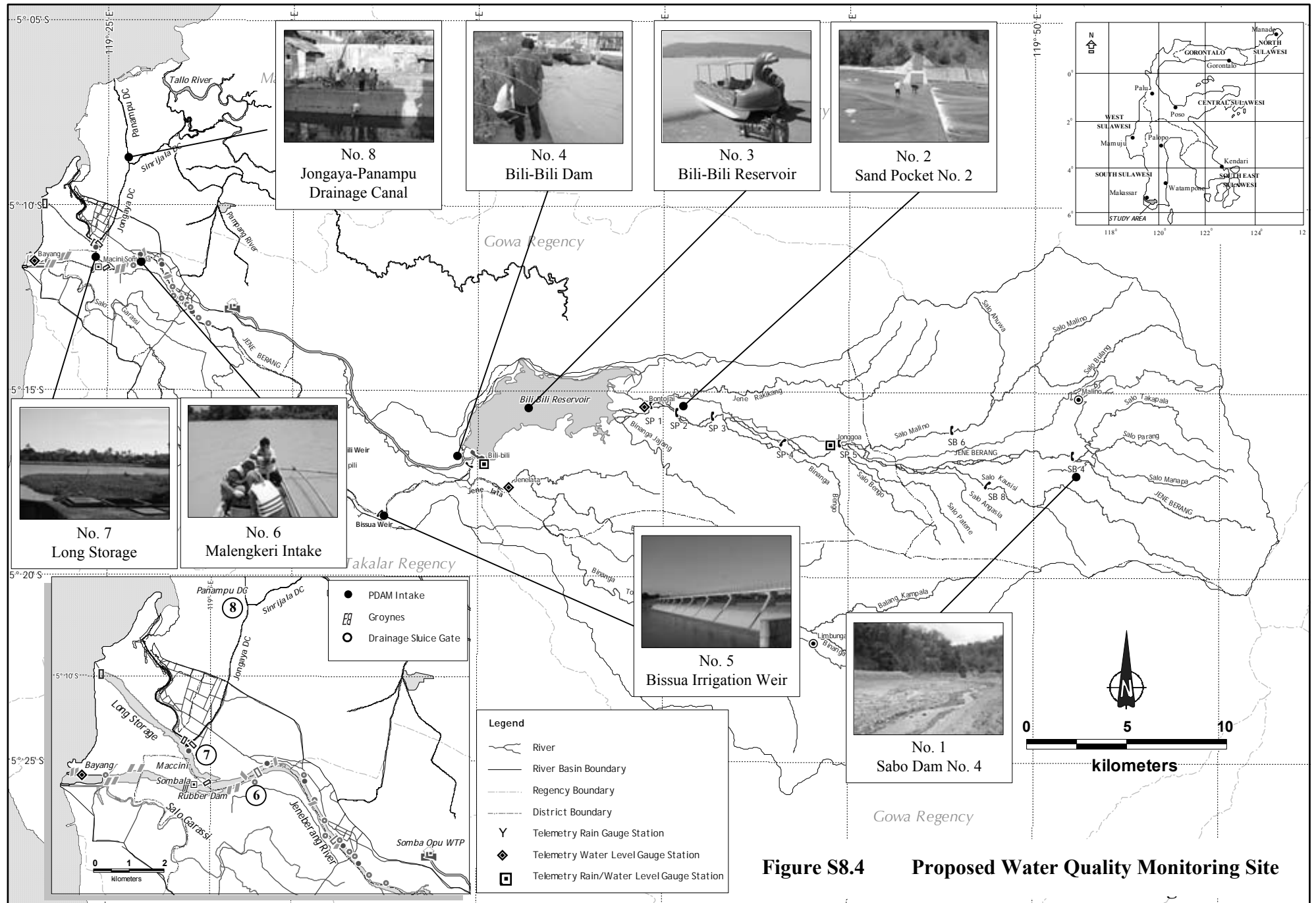
b) Total Suspended Solids



c) Electric Conductivity



d) Total Dissolved Solids



Legend

- River
- River Basin Boundary
- Regency Boundary
- District Boundary
- Telemetry Rain Gauge Station
- Telemetry Water Level Gauge Station
- Telemetry Rain/Water Level Gauge Station

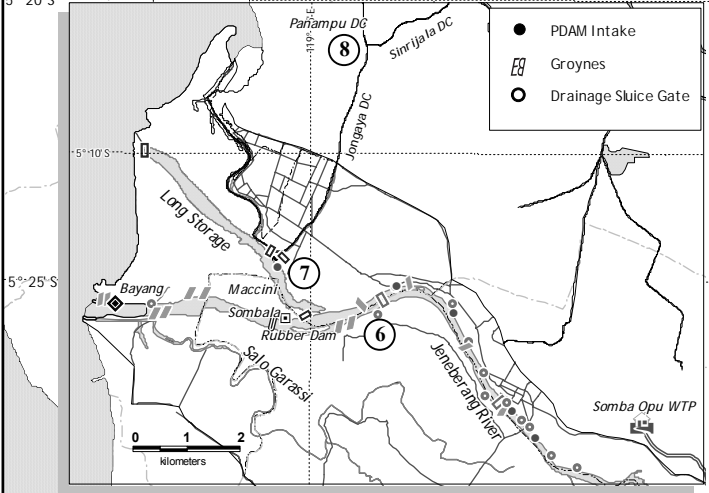


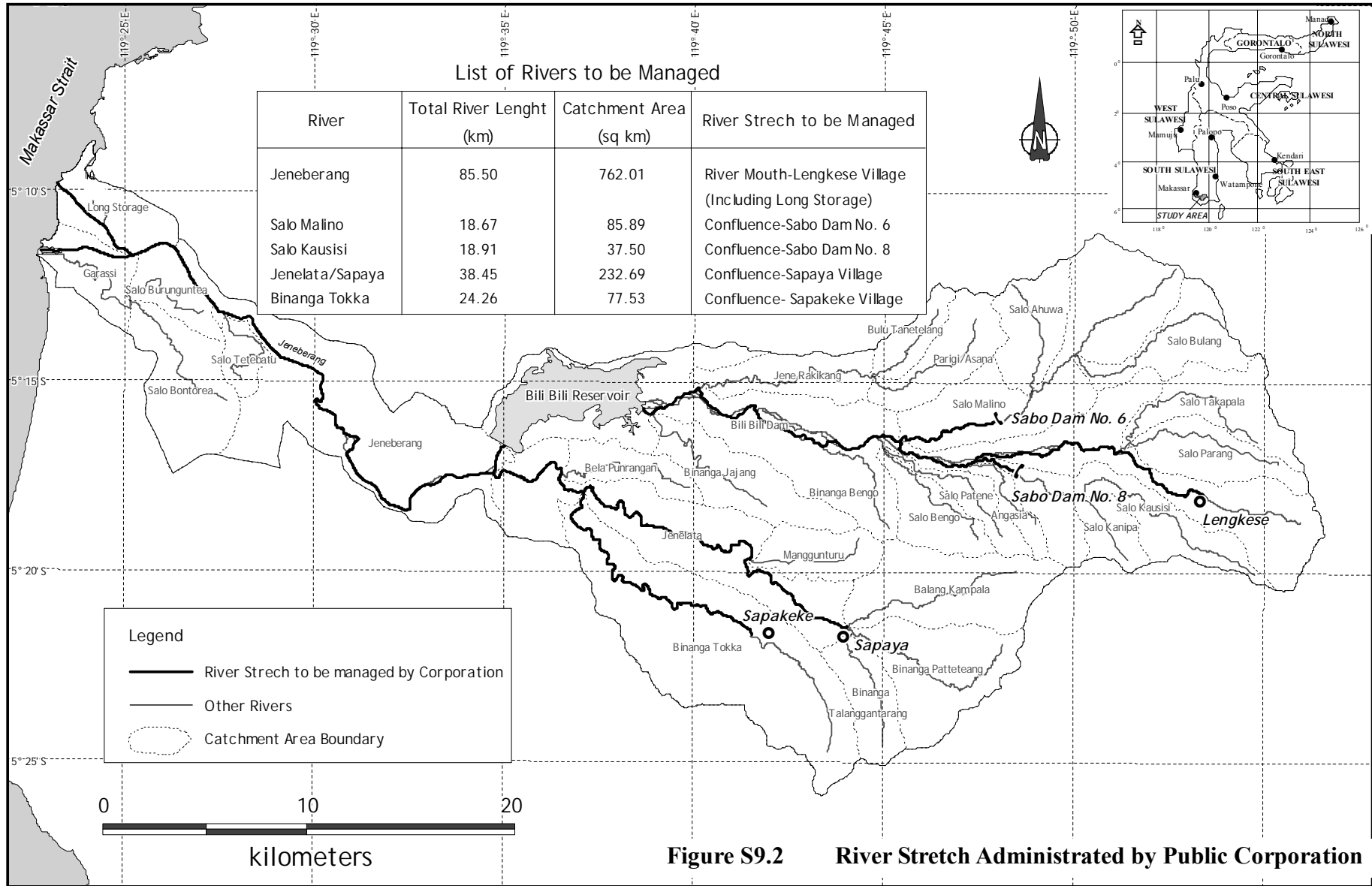
Figure S9.1 Establishment Schedule for PJT Jeneberang¹⁾

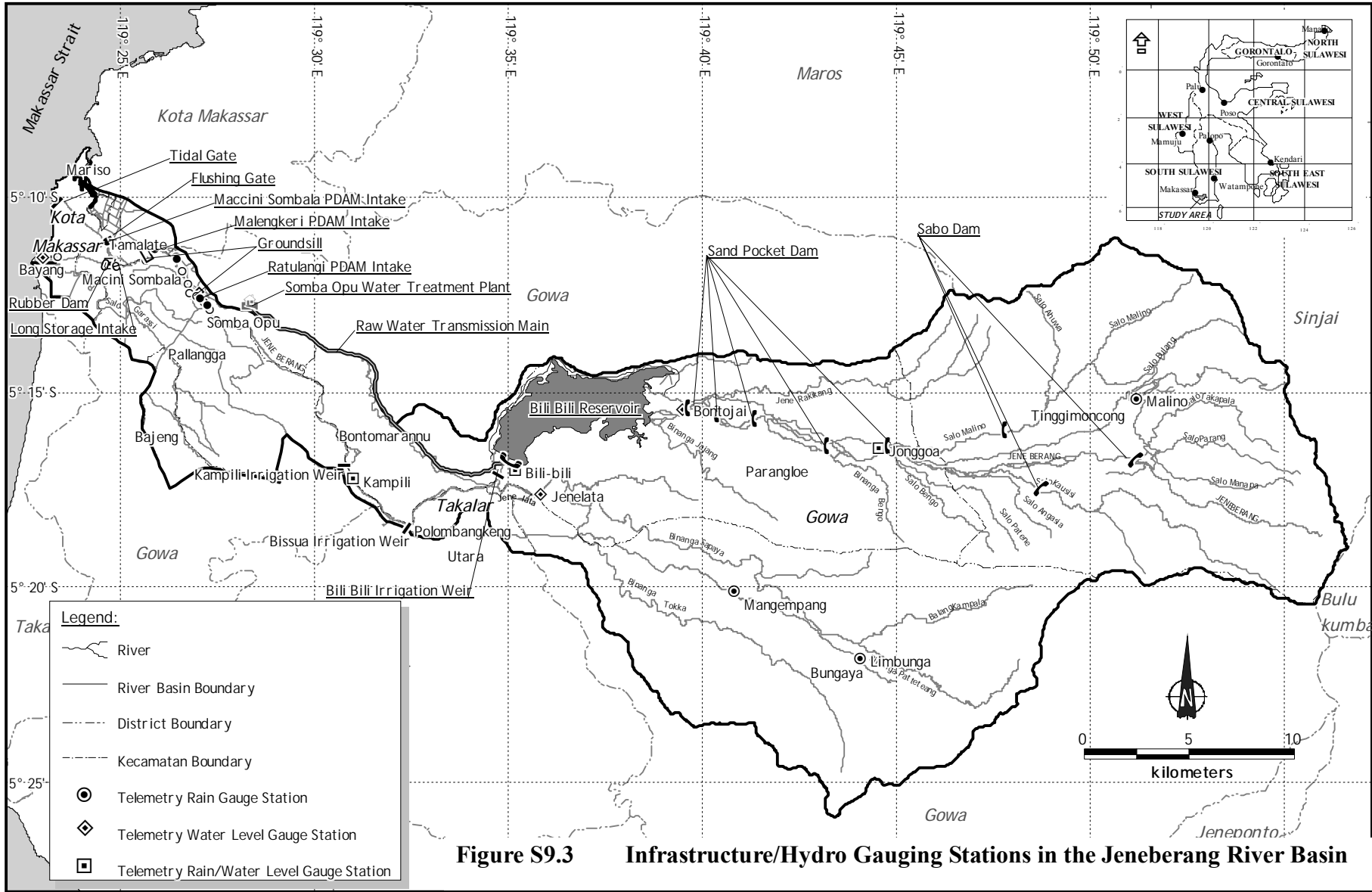
| Action ²⁾ | Action by | 2004 | | | 2005 | | | 2006 | | | | Remarks | |
|----------------------------------------------------------------------------------------------------|-----------|------|-----|----|------|----|-----|------|---|----|-----|---------|------------------------------------------------------|
| | | II | III | IV | I | II | III | IV | I | II | III | | IV |
| PJT I & III Initial Legislation | | | | | | | | | | | | | |
| - PP for establishing new PJT III (for Bengawan Solo, Jratunseluna & Serayu-Bogowonto) | MPW | | | | | | | | | | | | Final draft with Minister for MPW |
| - Informal discussions with Governor & DPRD of South Sulawesi, concerned Kabupaten / Kota | MPW | | | | | | | | | | | | |
| - Keppres for inclusion of Jeneberang Basin as additional working area of PJT I | MPW | | | | | | | | | | | | |
| Central Government Legislation (items other than above) | | | | | | | | | | | | | |
| - Government Regulation | | | | | | | | | | | | | First drafts prepared by PJT I |
| (1) PP for investment of State capital into the capital of PJT I | MPW | | | | | | | | | | | | |
| - Ministerial Decrees | | | | | | | | | | | | | |
| (1) MPW Decree for authorizing PJT I to collect O&M & other fees in the Jeneberang working area | MPW | | | | | | | | | | | | |
| (2) MPW Decree for authorizing Sulsel Governor to issue various permits | MPW | | | | | | | | | | | | |
| (3) MPW Decrees on funding O&M: basic tariff for industry, PDAM and PLN | MPW | | | | | | | | | | | | Prepare in parallel with Provincial Decrees |
| (4) MSOE Decree for amending PJT I's Supervisory Board | MSOE | | | | | | | | | | | | |
| Regional Government Legislation | | | | | | | | | | | | | |
| - Budgetary Arrangement | SSGov | | | | | | | | | | | | First drafts of regs and decrees prepared by PJT I |
| - Four Provincial Regulations for authorizing Corporation to conduct RB management | SSGov | | | | | | | | | | | | Budget for public consultation, etc. |
| - Various Governor Decrees concerning licensing, fee collection and, generally, implementing Prov. | SSGov | | | | | | | | | | | | } A conservative estimate of 1.5 years |
| - Various Dinas PSDA/Bapedalda Decrees on technical guidelines | SSGov | | | | | | | | | | | | |
| - Various Agreements between PJT I and Kabupaten / Kota governments and other stakeholders | KabGov | | | | | | | | | | | | |
| Preparation for Establishment of Corporation | | | | | | | | | | | | | |
| - Transfer of assets to Corporation | MPW | | | | | | | | | | | | |
| - Selling scrap assets to raise funds for the Corporation | MPW | | | | | | | | | | | | |
| - Budgeting of fresh money fund needed for corporation establishment | MPW | | | | | | | | | | | | As budget for initial mobilization expenses |
| - Organizational setup including office setup and key personnel assignment | MPW | | | | | | | | | | | | |
| Preparation for Start of O&M Operation | | | | | | | | | | | | | |
| - Budgeting of fresh money fund for conducting O&M work | MPW | | | | | | | | | | | | |
| - Procurement of O&M operation resources | MPW | | | | | | | | | | | | |
| - Preparatory work for commencement of actual operation | MPW | | | | | | | | | | | | Office rules, manuals, staff training, socialization |

Notes: 1) The detail of this schedule is still tentative. Dates for establishment (1/1/2006) and start of operations (1/1/2007) should be regarded as firm

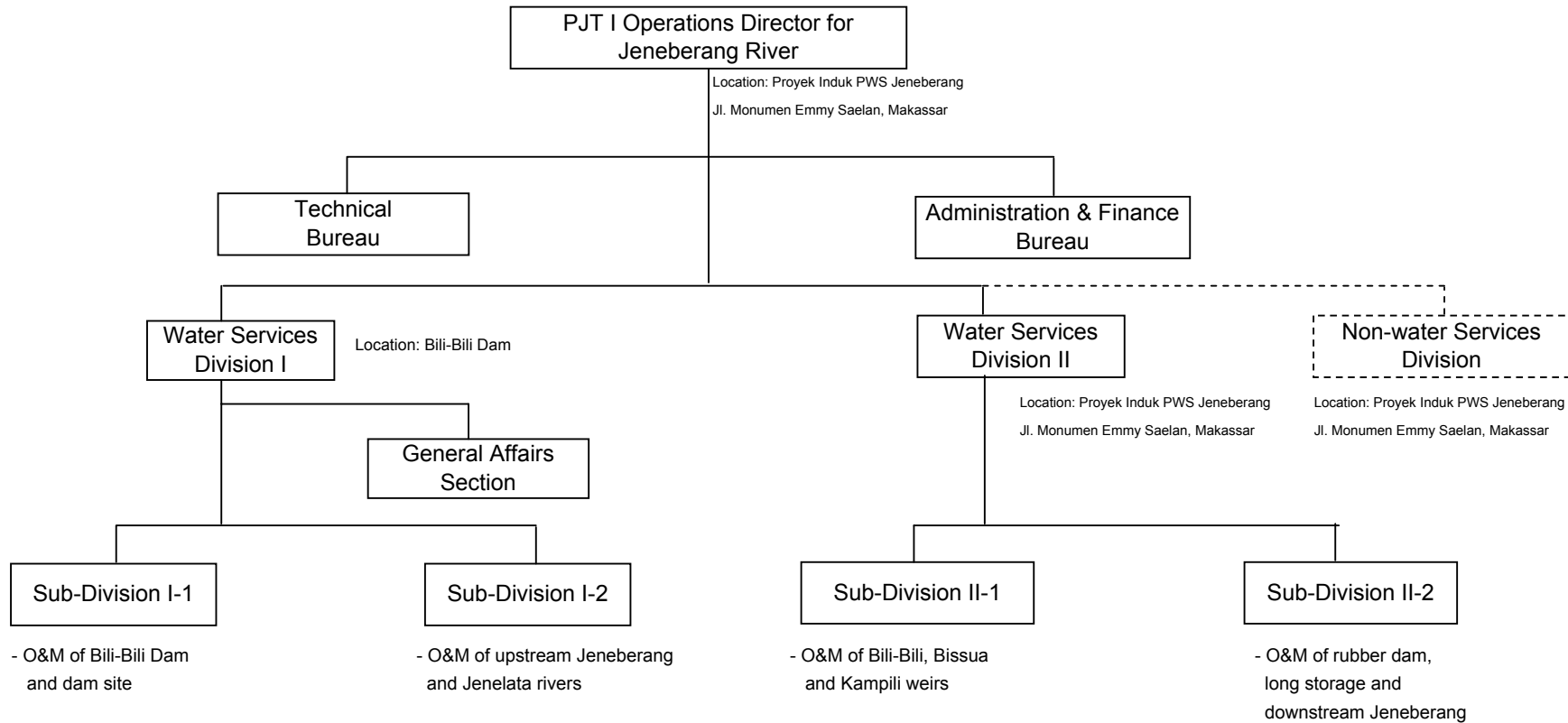
2) These actions can be largely independent of the work on revising WRM-related GRs

SF-21





Overall Organization



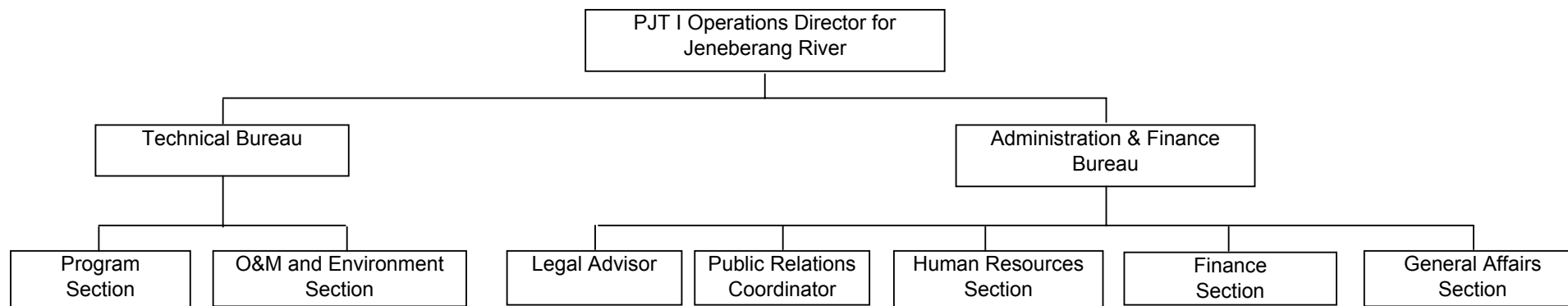
Overall total staff: 76

Notes:

- 1) The General Affairs Section attached to Water Services Division I is primarily responsible for dam site security
- 2) Non-water services are excluded from this chart. However, it is expected that such services will, in due course, include sustainable sand mining, tourism, equipment hiring and consultancy.

Figure S9.4 PJT Jeneberang as Extension of PJT I (1/4)

Technical and Administrative Support



Head of Operations Directorate 1

Technical Bureau staff details:

Head of Technical Bureau 1

Head of Program Section 1

Engineering Staff 1

Head of O&M and Environment Section 1

Water Quality Analyst 1

Sampling Staff 2

Structural Enginner 1

Mechanical/Electrical Engoinner 1

Geologist /Soil Mechanic Engineer 1

Computer Operator/Typist 1

Survey & Equipment Staff 1

Sub Total: 13

Administration & Finance Bureau staff details:

Head of Administration & Finance Bureau 1

Legal Advisor 1

Public Relations Coordinator 1

Head of Human Resources Section 1

Administration Staff 1

Head of Finance Section 1

Finance / Accounting Staff 1

Computer Operator / Typist 1

Head of General Affairs Section 1

Administration Staff 1

Office Boy/Girl 2

Security [3]

Drivers 3

Sub Total: 15 **Subcontracted**

Technical and Administrative Support Total: 28 persons

Figure S9.4 PJT Jeneberang as Extension of PJT I (2/4)

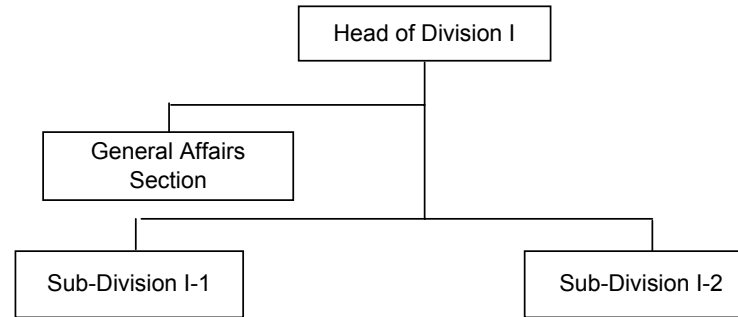
Water Services Division I

Location: Bili-Bili Dam Site

Infrastructure and Tasks:

| | |
|------------------------------------------------------|------------------------------------------------------------------------------------------------------------------------------------------------------------------------------------------------------------------------------------------------------------------------------------------------------------------------------------------|
| Bili-Bili Dam | O&M of Bili-Bili Dam: * Main, left wing & right wing dam * Inlet/Outlet structure * Flood control gate * Spillway * Diversion channel |
| Bili-Bili Dam Site and related operations basin-wide | O&M of Telemetry Hydrological Gauging Station * Telemetry gauging stations (10) * Warning stations (2) * Supervisory control station * Monitoring station O&M of Raw Water Transmission Main * PC pipes (16.0 km) * Steel pipes (0.25 km) * Valves with valve chambers (25 units) Flood forecasting & warning |
| Upper Jeneberang | O&M of Sand Pocket & Sabo Dams * Sand pocket dams (5) * Sabo dams (3) River conservation in the River Administration Area Collaboration with SS Dinas Forestry and others in watershed conservation in Bili-Bili Dam Catchment Area |

- Notes:
- 1) The boundary between Divisions I and II will be placed on the Jeneberang River just below Bili-Bili Dam (except for Raw Water Transmission Main).
 - 2) Control of legal and illegal sand mining will be included in the work of the Upstream River Sub-Division.



Head of Water Services Division I 1

General Affairs Section Staff details:

| | |
|---------------------------------|-----|
| Head of General Affairs Section | 1 |
| Computer Operator / Typist | 1 |
| Security* | [6] |
| Driver | 2 |
| Sub Total: | 4 |

*: Subcontracted [staff numbers not correct]

Sub-Division I-1 [Dam O&M] staff details:

| | |
|------------------------------------|----|
| Head of Sub-Division I-1 | 1 |
| Hydrologist / water quality expert | 1 |
| Telecommunication engineer | 1 |
| Computer Engineer | 1 |
| Gate operator | 4 |
| Field Inspector / warning crew** | 1 |
| Computer Operator / Typist | 1 |
| Driver | 3 |
| Sub Total | 13 |

**: In addition, six personnel are to be subcontracted

Sub-Division I-2 (Upstream O&M) Staff details:

| | |
|-------------------------------------------|---|
| Head of Sub-Division I-2 / Civil Engineer | 1 |
| Field Inspector*** | 1 |
| Computer Operator | 1 |
| Driver | 3 |
| Sub Total: | 6 |

***: In addition, three personnel area to be subcontracted

Division Total : 24 persons

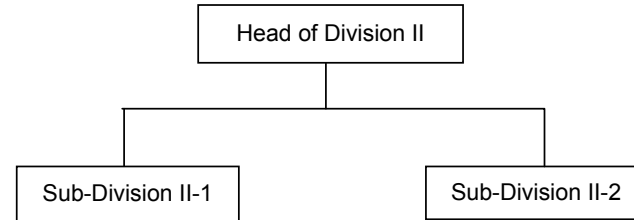
Figure S9.4 PJT Jeneberang as Extension of PJT I (3/4)

Water Services Division II

Location: Proyek Induk PWS Jeneberang, Jl. Monumen Emmy Saelan, Makassar

Infrastructure and Tasks

| | |
|---------------------------|------------------------------------------------------------------------------------------------------------------------------------------------------------------------------------------------------------------------------------------------------------------------------------------------------------------------------------------------------------------------------------------|
| Middle Jeneberang (weirs) | O&M of Bili-Bili Weir * Diversion weir (1 unit 69.0 m long) * Intake structure (1 unit) O&M of Bissua Weir * Diversion weir (1 unit 239.3 m long) * Intake structure (1 unit) O&M of Kampili Weir * Diversion weir (1 unit 91.0 m long) * Intake structure (1 unit) River conservation in the River Administration Area between BiliBili Dam and Kampili Weir |
| Rubber Dam/ Long Storage | O&M of rubber dam * Rubber gate with control equipment * Bed protection with crushed stone * Revetment (316 m) O&M of long storage * Intake sluice gate * Flush gate to drainage channel (2) * Outlet box culvert * Tidal gate |
| Lower Jeneberang | O&M of river structures below Kampili Weir * Groundsill (2) * Drainage sluice gates (11) * River dyke (21.1 km) * Revetment (11.4 km) * Groyne (43) * Jetty River conservation in the River Administration Area below Kampili Weir |



| | |
|-------------------------------------------|---|
| Head of Water Services Division II | 1 |
| Computer Operator / Typist | 1 |
| Driver | 3 |

Sub-Division II-1 (Weirs O&M) Staff details:

| | |
|-------------------------------------------|----|
| Head of Sub-Division II-1/ Civil Engineer | 1 |
| Irrigation engineer | 1 |
| Gate operator | 6 |
| Driver | 2 |
| Sub Total: | 10 |

Sub-Division II-2 (Downstream O&M) staff details:

| | |
|------------------------------------------|---|
| <i>Downstream River Section</i> | |
| Head Sub-Divn II-2 / Civil Engineer | 1 |
| Hydraulic Engineer | 1 |
| Hydrologist/Water Quality Engineer | 1 |
| Field Inspector | 1 |
| Computer Operator | 1 |
| <i>Rubber Dam / Long Storage Section</i> | |
| Gate Operator | 4 |
| Sub-Total | 9 |

Division Total: 24 persons

- Notes:**
- The 14 river gates along the lower Jeneberang River will be operated by temporary staff living near the gates. Gate operation instructions will be given by BiliBili Dam Control (supervised by Head of Sub-Division I-1)
 - The work of the Downstream River Section should include the control of salinity in Long Storage by appropriate means.

Figure S9.4 PJT Jeneberang as Extension of PJT I (4/4)

SF-26

Figure S12.1 Conceptual Schedule toward Operation of PJT I Jeneberang

| Description | Preparation Stage 2005 | Establishment Stage 2006 | Mid-term Plan Period | | | | | Expansion Phase |
|---------------------------------------------------------------------------------------------------|--------------------------------------------------------------------------------------------------------------|-----------------------------|----------------------|---------------|--------------------------------------|-----------------------------------|------|-----------------|
| | | | Start-up Phase | | Development Phase | | | |
| | | | 2007 | 2008 | 2009 | 2010 | 2011 | |
| Legislation: (by Government) | | | | | | | | |
| 1 PJ T J & III initial legislation (for enabling establishment) | █ | | | | | | | |
| 2 Central government legislation (other than above) | █ | █ | | | | | | |
| 3 Regional government legislation & agreements among stakeholders | █ | █ | | | | | | |
| Budgeting: (by Government) | | | | | | | | |
| 1 Budget for regional legislation & socialization | █ | | | | | | | |
| 2 Budget for organizational establishment | █ | █ | | | | | | |
| 3 Budgeting of fresh money fund for initial O&M operation | | █ | | | | | | |
| Rehabilitation of Infrastructure before Asset Management Transfer to PJT J (by Government) | | | | | | | | |
| | (e.g. Rubber dam, sand pocket No.4, sluiceway & drainage gates in lower reach, hydrological gaging stations) | | | | | | | |
| Organizational Set-up: (by PJT Jeneberang) | | | | | | | | |
| 1 Office set-up | | █ | | | | | | |
| 2 Assignment of key staff for initial mobilization work | | █ 20 | | | | | | |
| 3 Assistance in socialization, legislation and water fee setting | | █ | | | | | | |
| 4 Preparation of detailed annual work plan and budget plan | | █ | | | | | | |
| 5 Finalization of corporate and RBM management system | | █ | | | | | | |
| 6 Initial training of O&M personnel by PJT I | | █ | | | | | | |
| 7 Procurement of initial O&M operation resources | | █ | | | | | | |
| Commencement of Operation | | | | | | | | |
| ▼ | | | | | | | | |
| Operation: (by PJT Jeneberang) | | | | | | | | |
| 1 Recruitment of staff | | | 45 | 48 | 58 | 67 | 76 | |
| 2 Establishment of management system | | | | | | | | |
| (1) Internal management system | | | | | | | | |
| (2) External relation | | | | | | | | |
| 3 Taking-over of Infrastructures (see Note 4 below) | | | | | | | | |
| 4 River Basin Management Services | | | | | | | | |
| (1) Water quantity management | | | | | | | | |
| (2) Water quality management | | | | (Preparation) | | | | |
| (3) Flood control and management | | | | | (Preparation) | | | |
| (4) Drought management | | | | | (Preparation) | | | |
| (5) River administration area management | | | | (Preparation) | | | | |
| (6) Watershed management | | | | | (Preparation) | | | |
| (7) O&M of infrastructure | | | | | | | | |
| 5 Fee collection | | | | | | | | |
| (1) Establishment of various permit / license system | | | | | | | | |
| (2) Socialization of fee collection | | | | | | | | |
| (3) Collection of fees | | | | | PDAM & PLN + Industrial & other fees | | | |
| 6 Development of Non-water Business | | | | | | Gradual expansion of new business | | |
| Capacity development program to strengthen the operational capabilities | | | | | | | | |
| | (Revised schedule under discussion) | | | | | | | |
| (Activities scheduled as Phase III of the current Study) | | | | | | | | |

Note: 1. (Preparation): Main activities during this period is the establishment of service system including technical studies and public relation formation. However, minimum extent of required RBM service will be provided in parallel. .
 2. Number of staff shown above is still tentative, subject to change in further study
 3. Schedule of fee collection is dependent on acquisition of consensus and agreement from stakeholders, which is presumed to take some time jaccording to experience in Solo basin
 4. Taking-over of infrastructure will be made on facility-by-facility basis: i.e. initially dam and lower reach facilities, then irrigation weir and then Sabo facilities

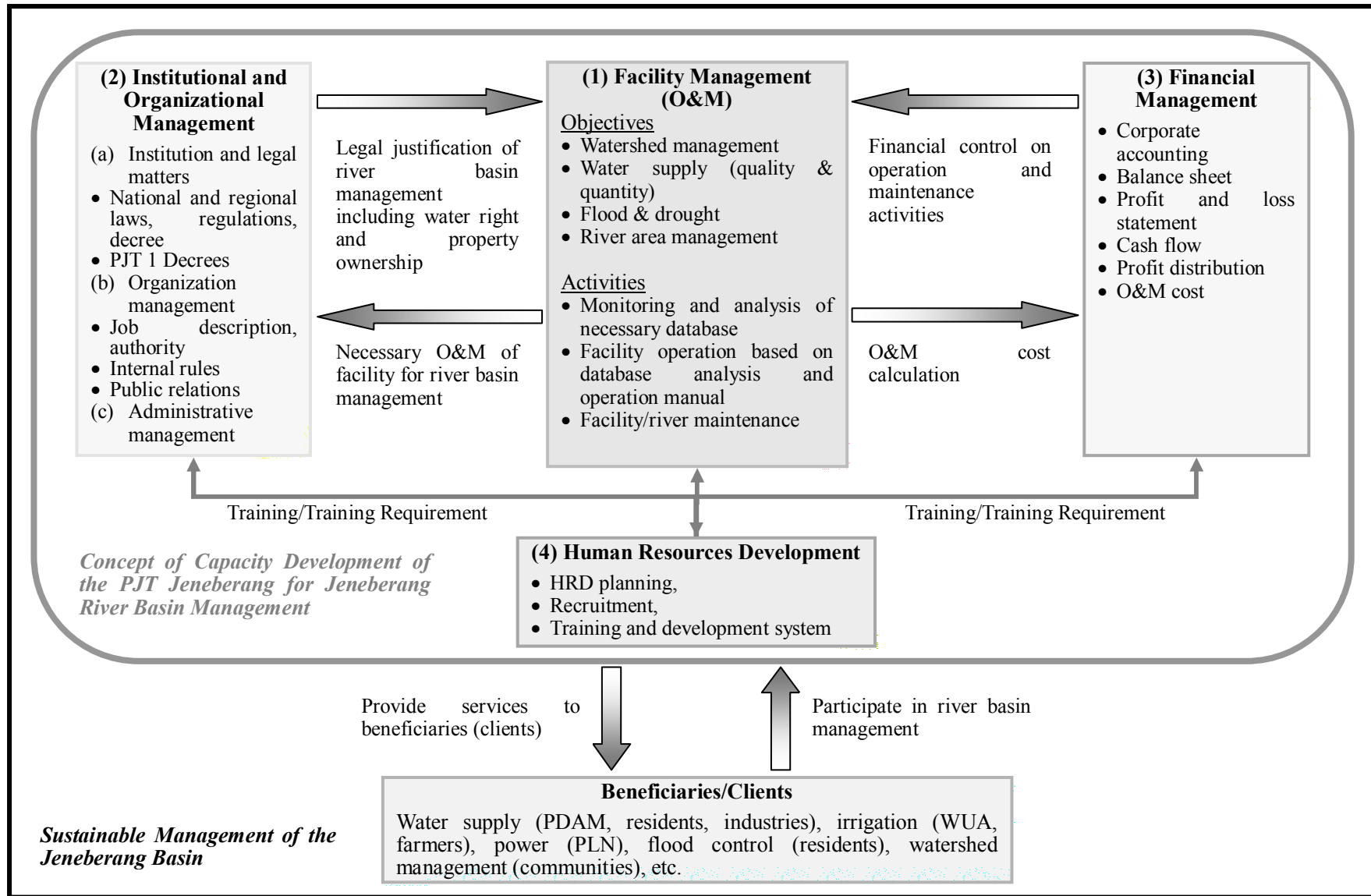


Figure S13.1 Concept of Capacity Development

Appendix I

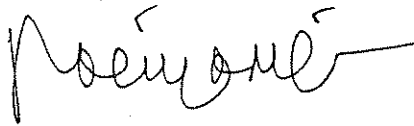
SCOPE OF WORK
FOR
THE STUDY ON CAPACITY DEVELOPMENT
FOR
JENEBERANG RIVER BASIN MANAGEMENT
IN
THE REPUBLIC OF INDONESIA

AGREED UPON BETWEEN

DIRECTORATE GENERAL OF WATER RESOURCES,
MINISTRY OF SETTLEMENT AND REGIONAL INFRASTRUCTURE

AND

JAPAN INTERNATIONAL COOPERATION AGENCY



Dr. Roestam SJARIEF
Director General
Directorate General of Water Resources
Ministry of Settlement & Regional Infrastructure

JAKARTA, August 27, 2003



Dr. Takeyoshi SADAHIRO
Leader
Preparatory Study Team
Japan International Cooperation Agency

I. INTRODUCTION

In response to the request of the Government of the Republic of Indonesia (hereinafter referred to as "the Government of Indonesia"), the Government of Japan decided to conduct the Study on Capacity Development for Jeneberang River Basin Management (hereinafter referred to as "the Study") in accordance with the relevant laws and regulations in force in Japan. Accordingly, Japan International Cooperation Agency (hereinafter referred to as "JICA"), the official agency responsible for the implementation of the technical cooperation programs of the Government of Japan, will undertake the Study in close cooperation with the authorities concerned of the Republic of Indonesia.

The present document sets forth the Scope of Work with regard to the Study.

II. OBJECTIVES OF THE STUDY

The objectives of the Study are;

1. (1) To assist in the establishment of Jeneberang public corporation which will be transferred from a part of the Jeneberang river basin development project
- (2) To assist Jeneberang public corporation in the capacity development in the following items
 - Administration
 - Financial management
 - River basin management
 - Human resources development
2. To formulate the operation and maintenance plan

III. OBJECTIVE AREA

The Study will cover the whole area of Jeneberang river basin (approximately 760 km²) and the service areas as a source of Jeneberang public corporation's revenue (The study area map is shown in the Annex-1).

IV. SCOPE OF THE STUDY

Phase I: Basic Study/Analysis and Assessment of River Basin Management Plan

1. Collection and analysis of existing data and information
2. Review and assessment of the existing related development plans, policies, guidelines and manuals
3. Review and assessment of the donors' activities in the Water Resources Sector in Indonesia (Case study on capacity building and financial condition improvement)
4. Review and assessment of the river basin management in Indonesia (including Brantas river basin and Citarum river basin)
5. Assessment of the river basin management plan for the operation and maintenance plan

Phase II: Formulation for Capacity Development Plan

1. Development of the organizational framework
2. Formulation of the operation and maintenance plan of the river facilities
4. Development of strategies and plans for securing revenue
5. Formulation of the administration and financial management plan
6. Formulation of the human resources development plan

Phase III: Monitoring and Capacity Development

1. Monitoring and evaluation of the progress of the capacity development of Jeneberang public corporation
2. Review and improvement of capacity development plan
3. Enhancement of capacity development based on the results of the monitoring and evaluation

V. SCHEDULE OF THE STUDY

The Study will be carried out in accordance with the tentative schedule as attached in the Annex-2.

VI. REPORTS

JICA shall prepare and submit the following reports in English to the Government of Indonesia. JICA shall also prepare papers in Indonesian for information purpose. The English version shall remain official.

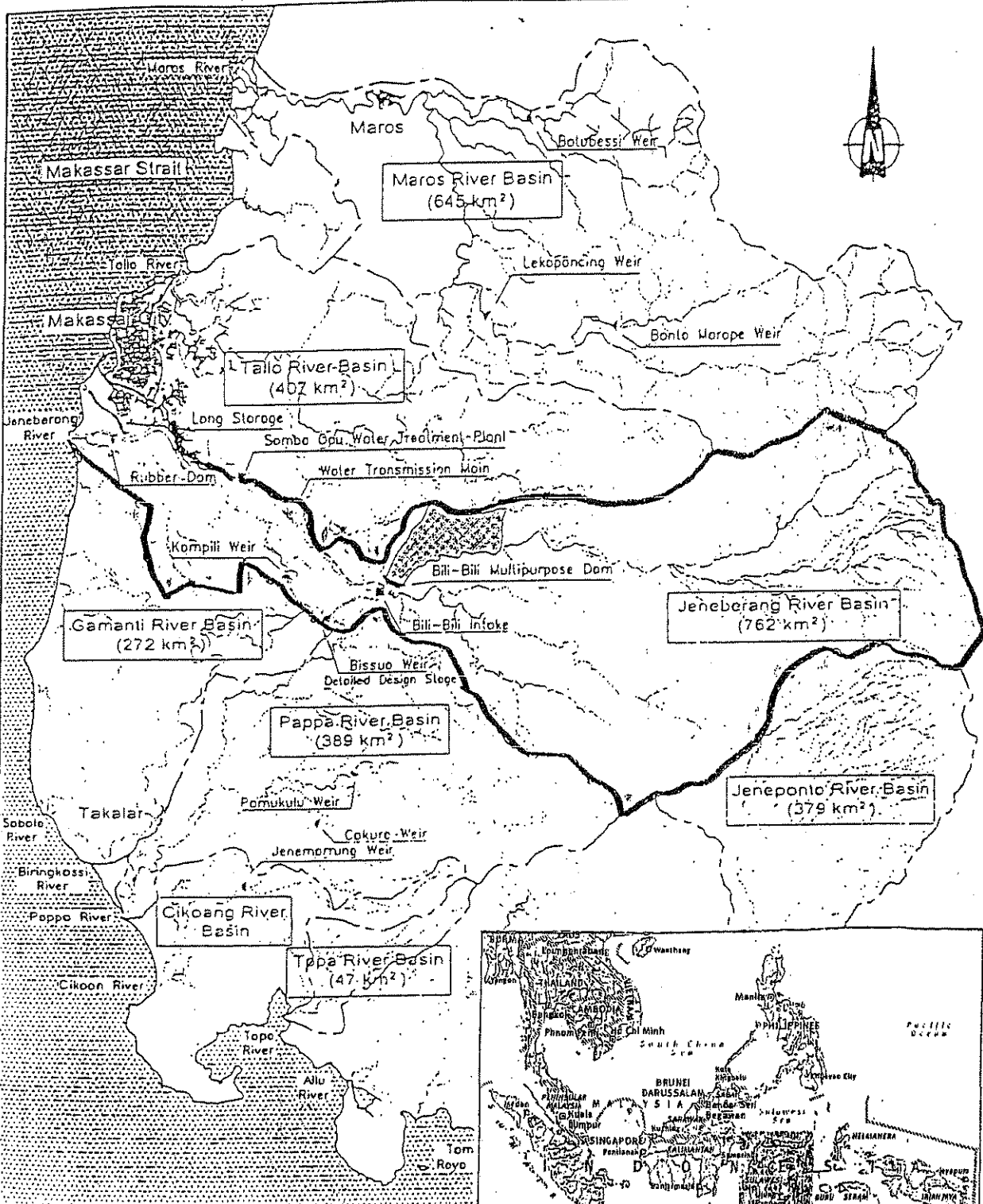
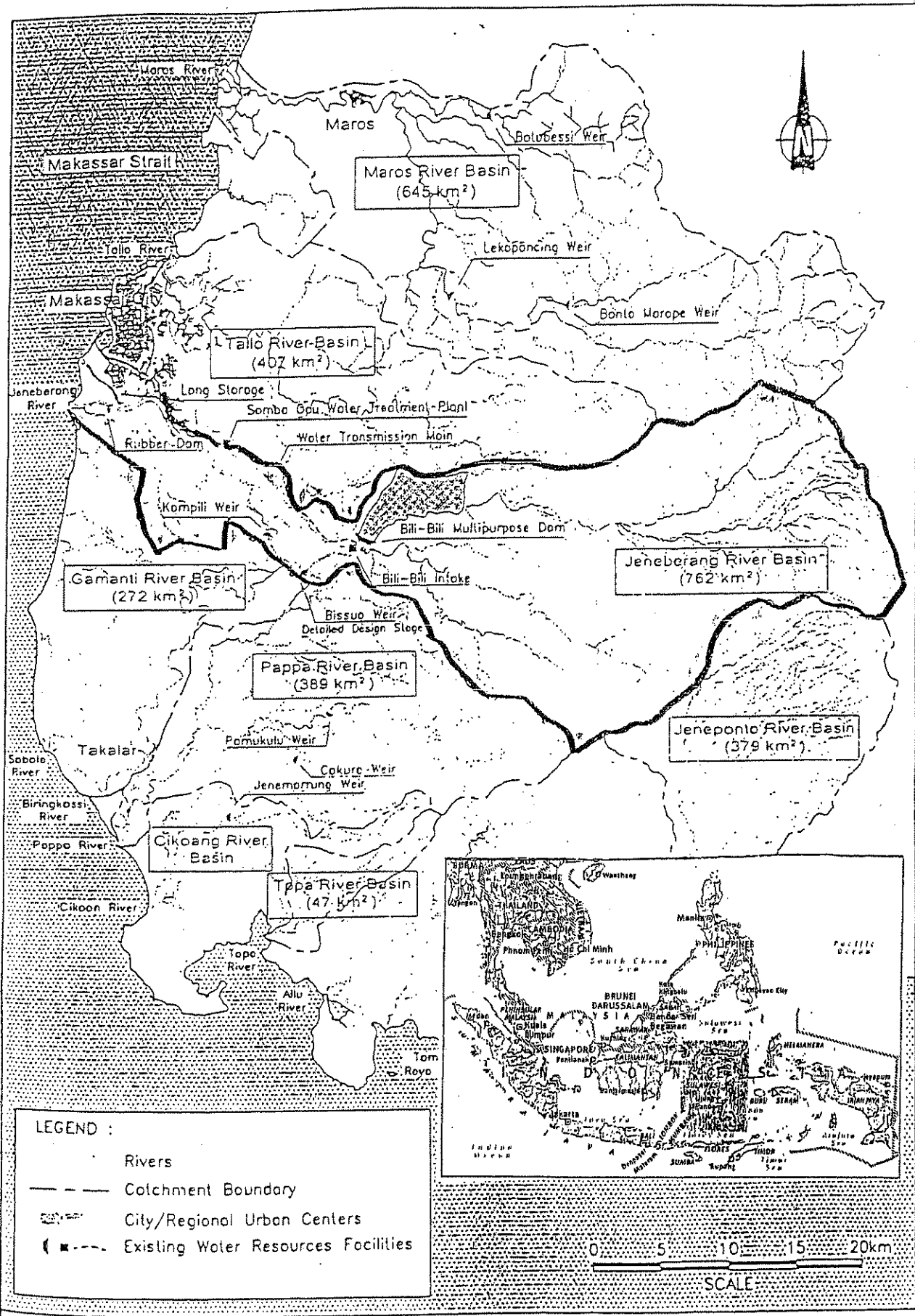
1. Inception Report:
Thirty (30) copies at the commencement of the Study.
2. Interim Report:
Thirty (30) copies at the end of the Phase I
3. Progress Report:
Thirty (30) copies about three (3) months after the commencement of the Phase II
4. Draft Final Report:
Thirty (30) copies at the end of the Phase II
The Government of Indonesia shall submit its comments within one (1) month after receipt of the Draft Final Report.
5. Final Report:
Thirty (30) copies within one (1) month after JICA's receipt of the comments on the Draft Final Report.
6. Report on Monitoring, Evaluation and Improvement of Capacity Development 1~4
Thirty (30) copies at the end of the each monitoring period

VII. UNDERTAKINGS OF THE GOVERNMENT OF INDONESIA

1. To facilitate the smooth conduct of the Study, the Government of Indonesia shall take necessary measures:
 - (1) To permit the members of the Team to enter, leave and sojourn in the Indonesia for the duration of their assignment therein, and exempt them from foreign registration requirements and consular fees,
 - (2) To exempt the members of the Team from taxes, duties, fees and any other charges on equipment, machinery and other materials brought into and out of the Indonesia for the conduct of the Study,
 - (3) To exempt the members of the Team from income tax and charges of any kind imposed on or in connection with any emoluments or allowances paid to the members of the Team for their services in connection with the implementation of the Study,
 - (4) To provide necessary facilities to the Team for the remittances as well as the utilization of the funds introduced into the Indonesia from Japan in connection with the implementation of the Study,
2. The Government of Indonesia shall bear claims, if any arise, against the members of the Team resulting from, occurring in the course of, or otherwise connected with the discharge of their duties in the implementation of the Study, except when such claims arise from gross negligence or willful misconduct on the part of the members of the Team.
3. Directorate General of Water Resources, Ministry of Settlement and Regional Infrastructure shall act as a counterpart agency to the Team and also as a coordinating body in relation with other governmental and non-governmental organizations concerned for the smooth implementation of the Study.
4. Directorate General of Water Resources, Ministry of Settlement and Regional Infrastructure shall at its own expense, provide the Team with the following, in cooperation with other organizations concerned:
 - (1) Security-related information on as well as measures to ensure the safety of the Team,
 - (2) Information on as well as support in obtaining medical service,
 - (3) Available data and information related to the Study,
 - (4) Counterpart personnel,
 - (5) Suitable office space with necessary office equipment,
 - (6) Credentials or identification cards, and
 - (7) Appropriate number of vehicles with drivers

VIII. CONSULTATION

JICA and Directorate General of Water Resources, Ministry of Settlement and Regional Infrastructure, will consult with each other in respect of any matter that may arise from or in connection with the Study.



Appendix II

MINUTES OF MEETINGS

ON

SCOPE OF WORK

FOR

THE STUDY ON CAPACITY DEVELOPMENT
FOR
JENEBERANG RIVER BASIN MANAGEMENT

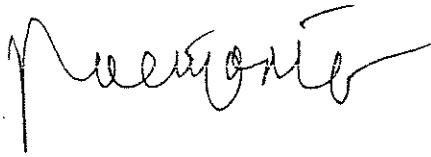
IN
THE REPUBLIC OF INDONESIA

AGREED UPON BETWEEN

DIRECTORATE GENERAL OF WATER RESOURCES,
MINISTRY OF SETTLEMENT AND REGIONAL INFRASTRUCTURE

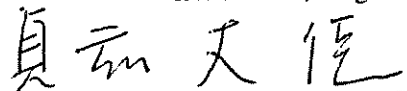
AND

JAPAN INTERNATIONAL COOPERATION AGENCY



Dr. Roestam SJARIEF
Director General
Directorate General of Water Resources
Ministry of Settlement & Regional Infrastructure

JAKARTA, August 27, 2003



Dr. Takeyoshi SADAHIRO
Leader
Preparatory Study Team
Japan International Cooperation Agency

In response to the request of the Government of the Republic of Indonesia (hereinafter referred to as "the Government of Indonesia"), the Government of Japan decided to conduct the Study on Capacity Development for Jeneberang River Basin Management (hereinafter referred to as "the Study") through Japan International Cooperation Agency (hereinafter referred to as "JICA").

The Preparatory Study Team (hereinafter referred to as "the Team") headed by Dr. Takeyoshi SADAHIRO, was dispatched by JICA to the Republic of Indonesia from August 11th to August 30th, 2003, where field reconnaissance was carried out and a series of meetings was held in connection with Draft Scope of Work with Directorate General of Water Resources, Ministry of Settlement and Regional Infrastructure (hereinafter referred to as "DGWR"), Jeneberang River Basin Development Project (hereinafter referred to as "JRBDP") and other authorities concerned (hereinafter referred to as "the Indonesian Side").

The list of attendants is shown in the Annex-1.

The Minutes of Meetings have been prepared for better understanding of the S/W. The following are the major issues discussed and agreed by both the Team and Indonesian side in the course of the preparation of S/W.

1. Title of the Study

- (1) The Study title shall be "*The Study on Capacity Development for Jeneberang River Basin Management in the Republic of Indonesia*" instead of the previous one "The Study on Empowerment Plan for Regional Water Resources Development and Management System in the Republic of the Indonesia".
- (2) JENECAS^T made up of Jeneberang Capacity Development Study will be used as the common name of the Study.

2. Goal of the Study

Both sides recognized that the objective of the Study mentioned in S/W is set as an approach to the goal which is to develop the river basin management system for Jeneberang river.

3. Schedule and Contents of the Study

The duration of the Study is tentatively set approximately 36 months. The definite Study schedule and contents for the Phase I & II shall be decided through the discussion on the IC/R, while for the Phase III on the DF/R, taking into account the progress and status of the establishment of the Jeneberang public corporation

4. Target organizations for the capacity development

In addition to Jeneberang public corporation (or JRBDP before the establishment of Jeneberang public corporation), Balai PSDA Jeneberang will be the target organization for the capacity development in connection with the Jeneberang river basin management.

5. Initiative of the Indonesian side

The Team requested the Indonesian side to take initiative for the capacity development. The Team expected that the Study Team is in a position to assist the Indonesian side.

6. Counterpart team as the preparation team for the establishment of the public corporation

The Indonesian side will organize a counterpart team which will act as the preparation team for the establishment of the public corporation by the commencement of the Study. The counterpart team will be composed of full-time counterpart personnel who will cooperate and actively work with the Study Team. The member list with each expertise will be informed to Indonesian side as soon as available.

7. Steering Committee

By the commencement of the Study, the Indonesian side will set up a Steering Committee that may be constituted of the following organizations:

- a. Ministry of Settlement and Regional Infrastructure represented by DGWR
- b. BAPPENAS
- c. Ministry of Finance
- d. Ministry of State-Owned Enterprise
- e. JRBDP as the secretary
- f. Others, if required

The Steering Committee shall monitor the progress of the Study and provide guidance and support to ensure the success of the Study.

8. Regional Committee

By the commencement of the Study, the Indonesian side will organize a Regional Committee that will monitor the progress, discuss the issues and support the Study. The results of the discussion shall be reported to the Steering Committee. The Regional Committee may be composed of the following:

- a. BAPPEDA
- b. Dinas PSDA of South Sulawesi
- c. JRBDP
- d. BAPEDALDA
- e. Balai PSDA Jeneberang
- f. Gowa Regency
- g. Makassar City
- h. Takalar Regency
- i. PDAM
- j. PLN
- k. Others, if required

9. Confirmation of the contents of the Study

The Team emphasized that the objective of the Study would be the capacity development in the administration and finance of the river basin management organizations and the operation & maintenance of the existing facilities. Therefore any study on new development project and new river facilities will not be included in the Study.

10. Contents of the river basin management plan

The river basin management plan in the Study will be prepared to formulate the operation and maintenance plan for the river facilities. The necessary data shall be collected from the existing organizations and previous and on-going studies/projects.

11. Information on the establishment of Public corporation

The Team requested the Indonesian side to decide and inform of the following issues as soon as possible for the smooth implementation of the Study.

- (1) Framework of Jeneberang public corporation such as the tasks, the jurisdiction area & facilities, etc.
- (2) Schedule of the establishment of Jeneberang public corporation

12. Formulation of the consensus among the stakeholders

The Team requested the Indonesian side to make all possible efforts to formulate the consensus among the stakeholders.

13. Securing of financial resource

Both sides confirmed that it is significant to take countermeasures in order for Jeneberang public corporation and Balai PSDA to become financially viable for the Jeneberang river basin management.

14. Seminars/Workshops

The seminars/workshops concerning the Study will be held in the course of the Study, and the plan of seminars/workshops will be discussed at the beginning of the Study.

15. Report

- (1) The Study reports will be made open to the public in order to disseminate the Study results extensively and achieve maximum use of them.
- (2) All reports will be prepared in English. In addition, the comprehensive summary reports in Indonesian will be prepared for IC/R, DF/R, F/R, and MEI/Rs.
- (3) If any discrepancy is found between the two version, English version shall prevail.

16. Counterpart Training

The Indonesian side requested the Japanese side to conduct the counterpart training in Japan. The Team promised to convey the request to the JICA Headquarters for consideration.

17. Undertakings of the GOI

The Indonesian side is amenable to the undertakings of the GOI as specified in the S/W. However, the Indonesian side mentioned that it would be difficult to provide the vehicles and some office equipments for the Study, and the Team promised to convey this to the JICA Headquarters.

