

## Chapter 4

### *Land use & Forest Type Map and Zoning Maps for Integrated Mangrove management Planning Map*

Figure4-1: Land use & Forest Type Map of Five Reserved Forests

Figure4-2: Zoning Map of Five Reserved Forests

Figure4-3: Land use & Forest Type Map of the Kyakankwinpauk Reserved Forest

Figure4-4: Zoning Map of the Kyakankwinpauk Reserved Forest

Figure4-5: Land use & Forest Type Map of the Pyinalan Reserved Forest

Figure4-6: Zoning Map of the Pyinalan Reserved Forest

Figure4-7: Land use & Forest Type Map of the Kadonkani Reserved Forest

Figure4-8: Zoning Map of the Kadonkani Reserved Forest

Figure4-9: Land use & Forest Type Map of the Meinmahla Reserved Forest

Figure4-10: Zoning Map of the Meinmahla Reserved Forest

Figure4-11: Land use & Forest Type Map of the Pyindaye Reserved Forest

Figure4-12: Zoning Map of the Pyindaye Reserved Forest



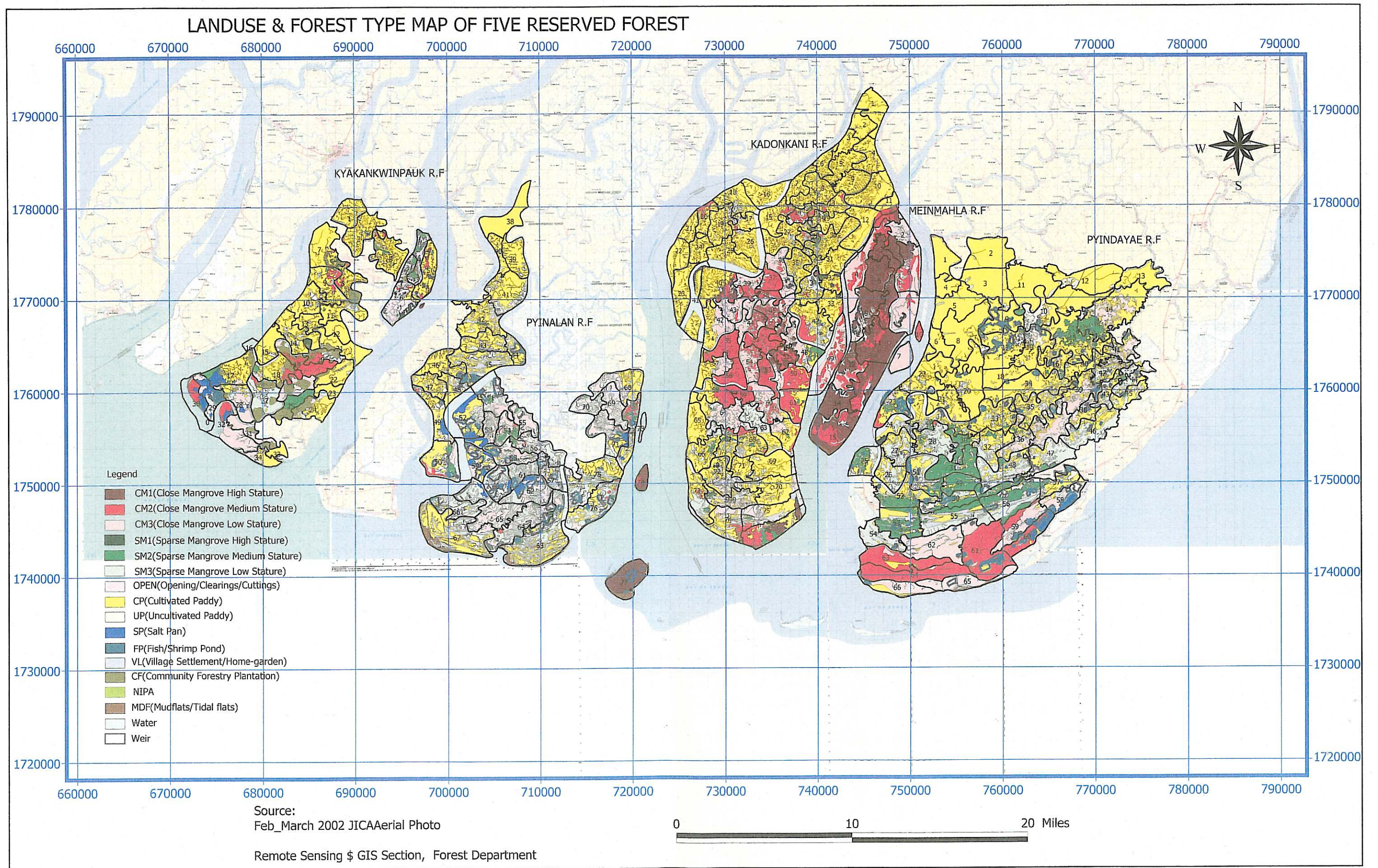


Figure4-1: Land use & Forest Type Map of Five Reserved Forests



### Zoning Map of Five Reserved Forests

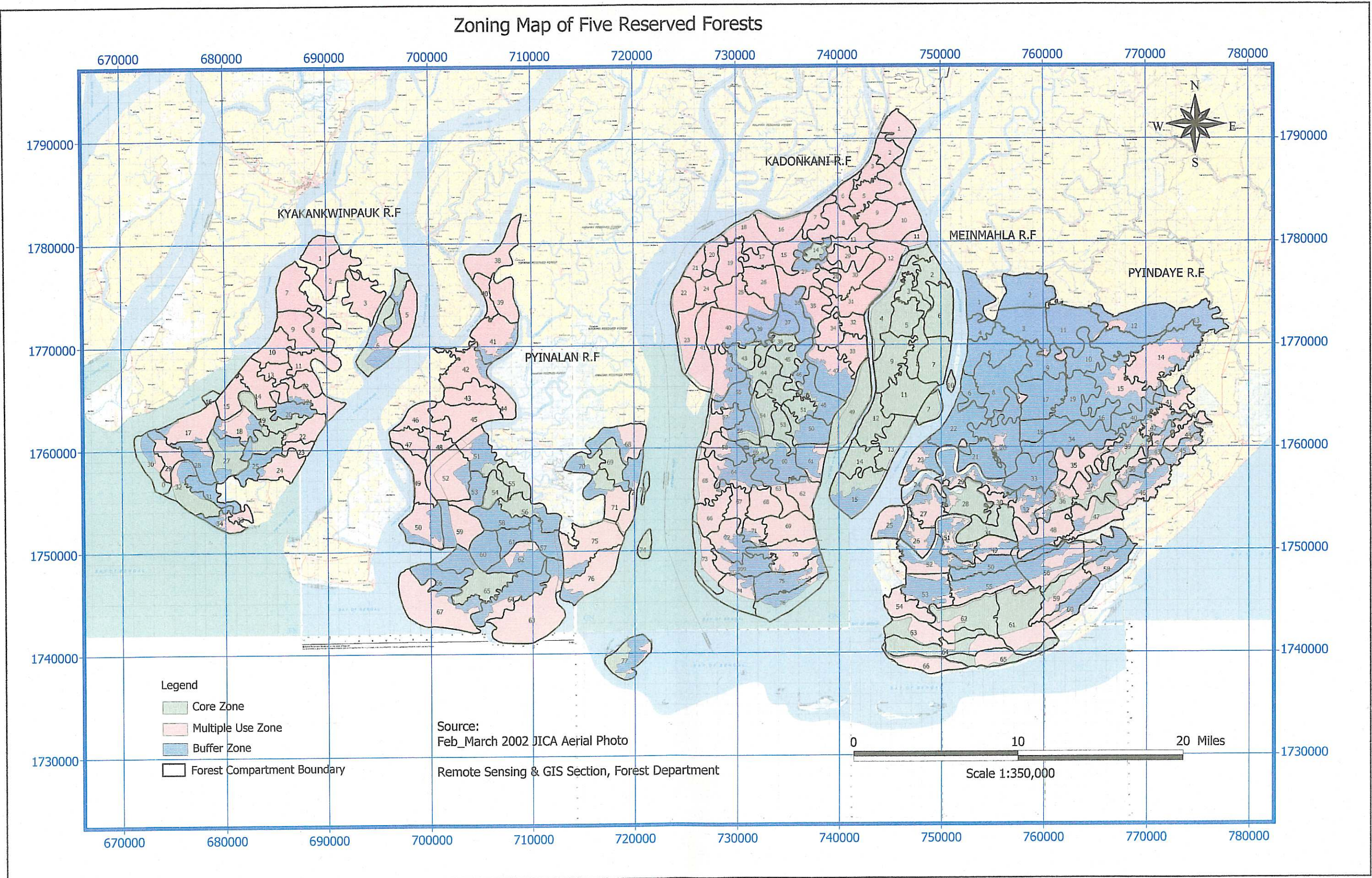


Figure4-2: Zoning Map of Five Reserved Forests



# LANDUSE & FOREST TYPE MAP OF KYAKANKWINPAUK RESERVED FOREST

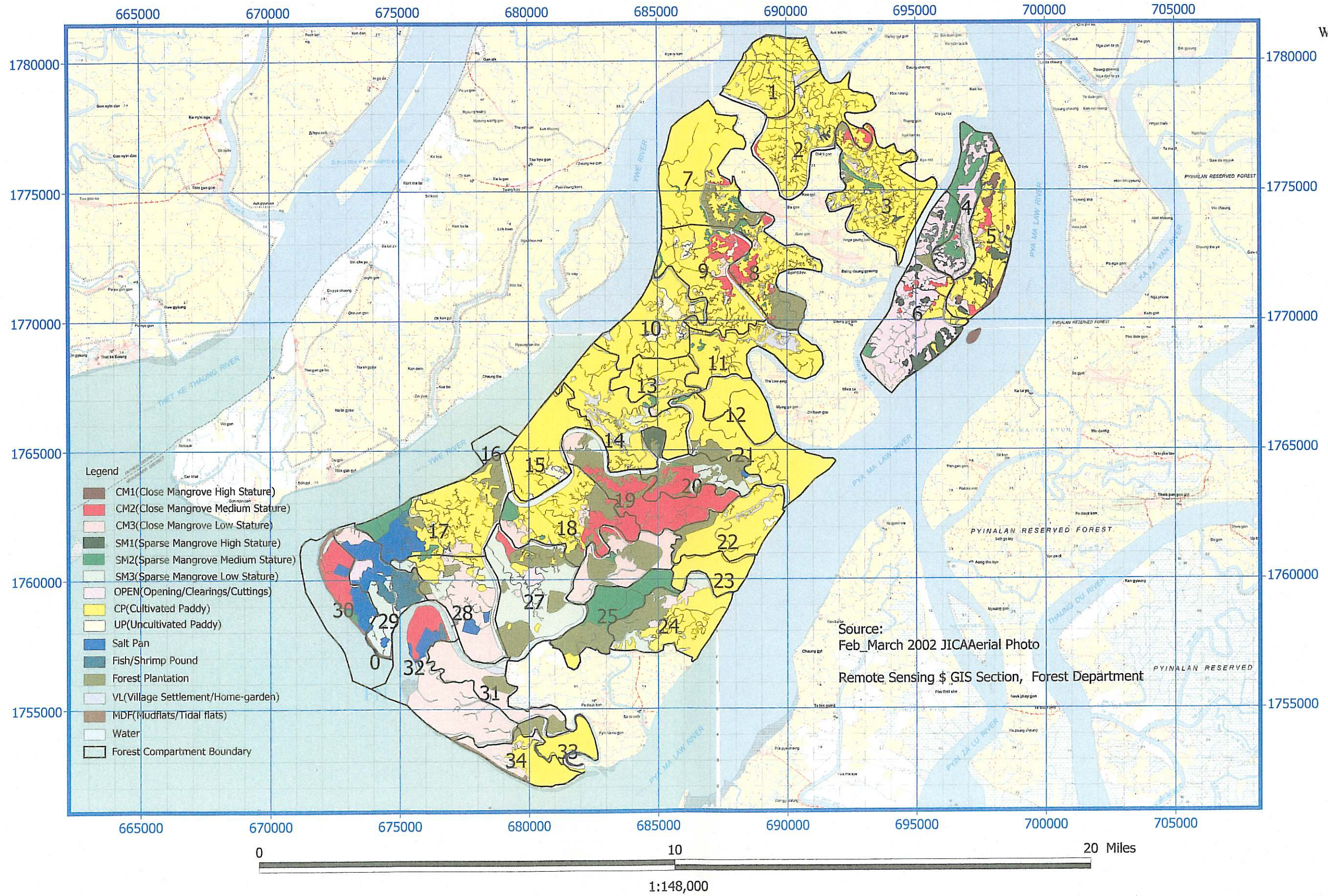


Figure4-3: Land use & Forest Type Map of the Kyakankwinpauk Reserved Forest



# Zoning Map of Kyakankwinpauk Reserved Forest

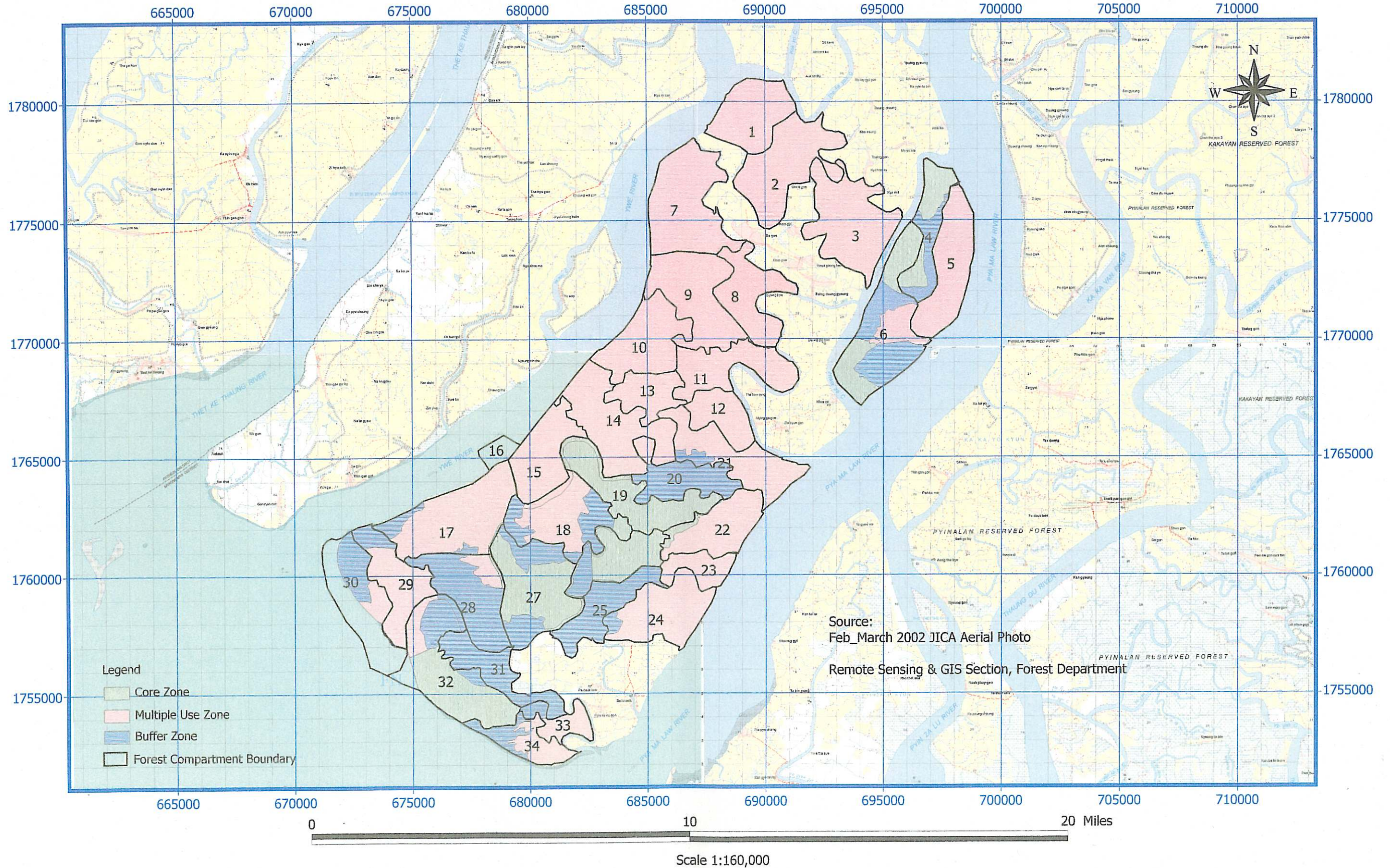


Figure4-4: Zoning Map of the Kyakankwinpauk Reserved Forest



# LANDUSE & FOREST TYPE MAP OF PYINALAN RESERVED FOREST

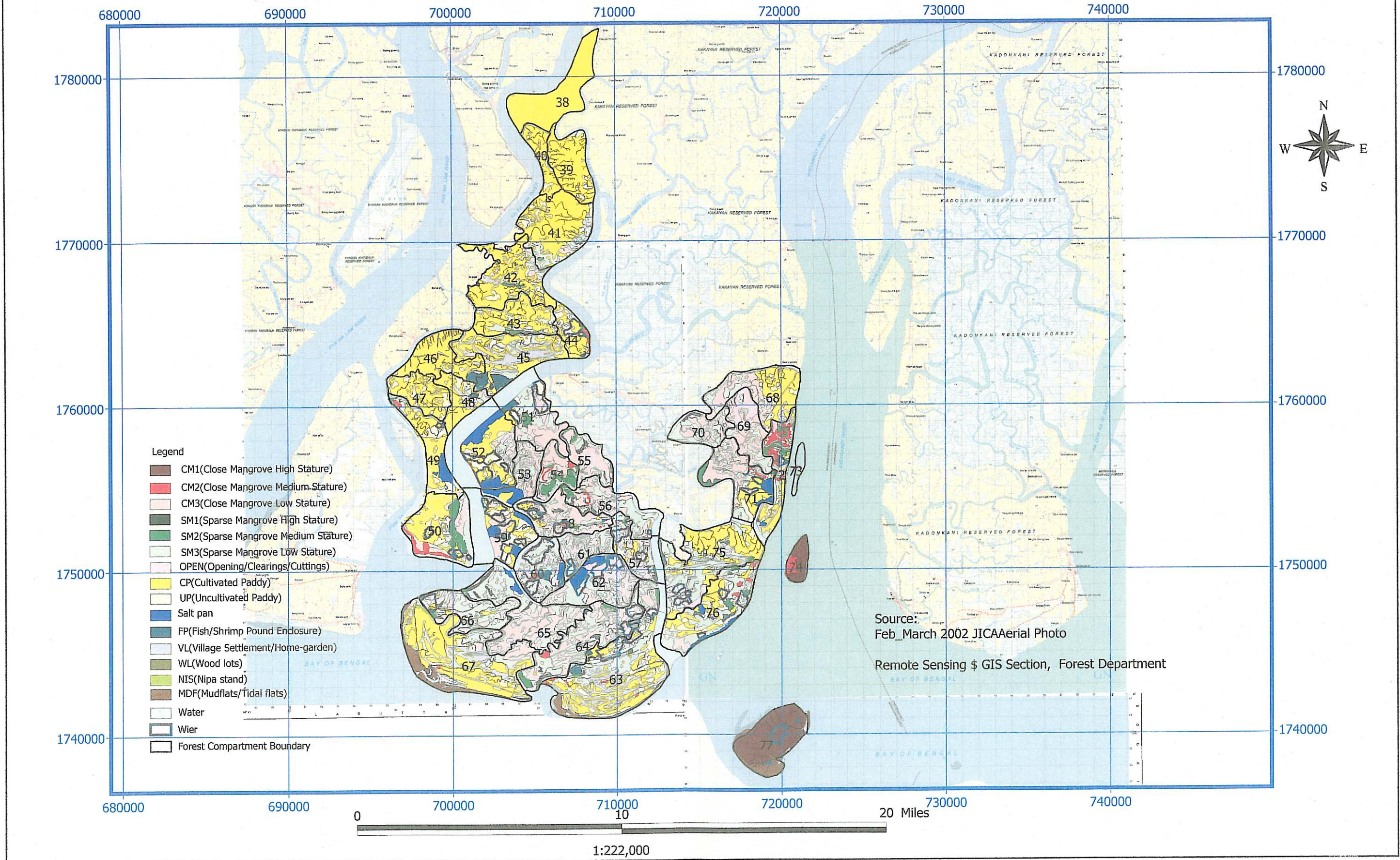


Figure4-5: Land use & Forest Type Map of the Pyinalan Reserved Forest



# Zoning Map of Pyinalan Reserved Forest

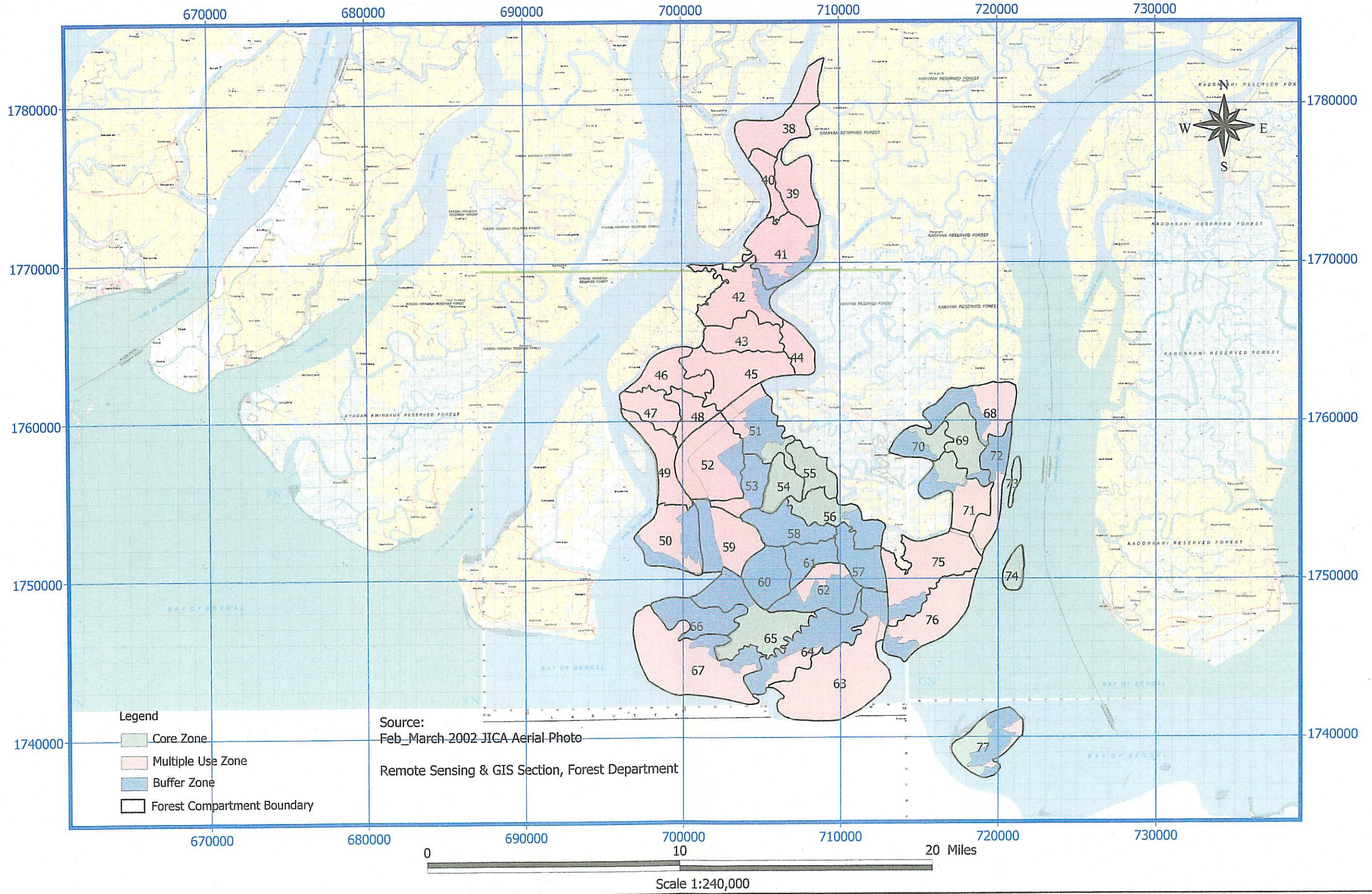


Figure4-6: Zoning Map of the Pyinalan Reserved Forest