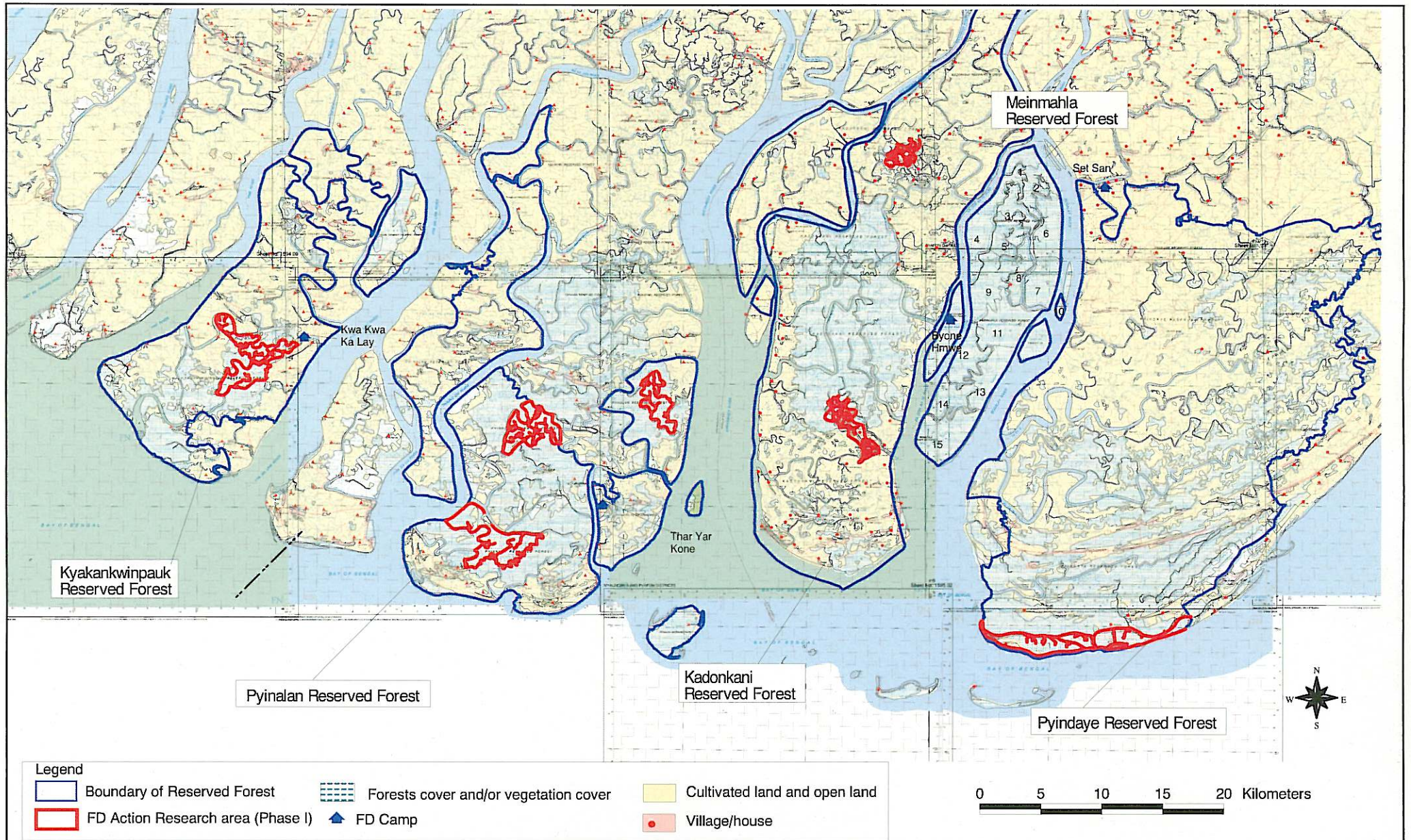
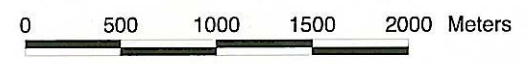
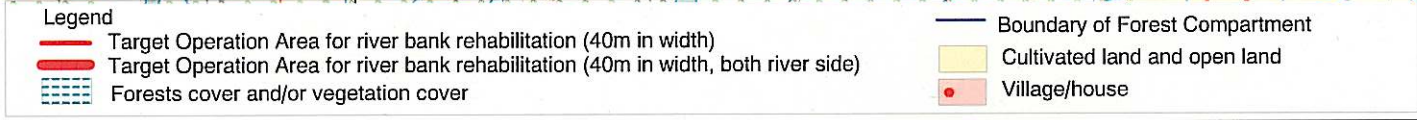
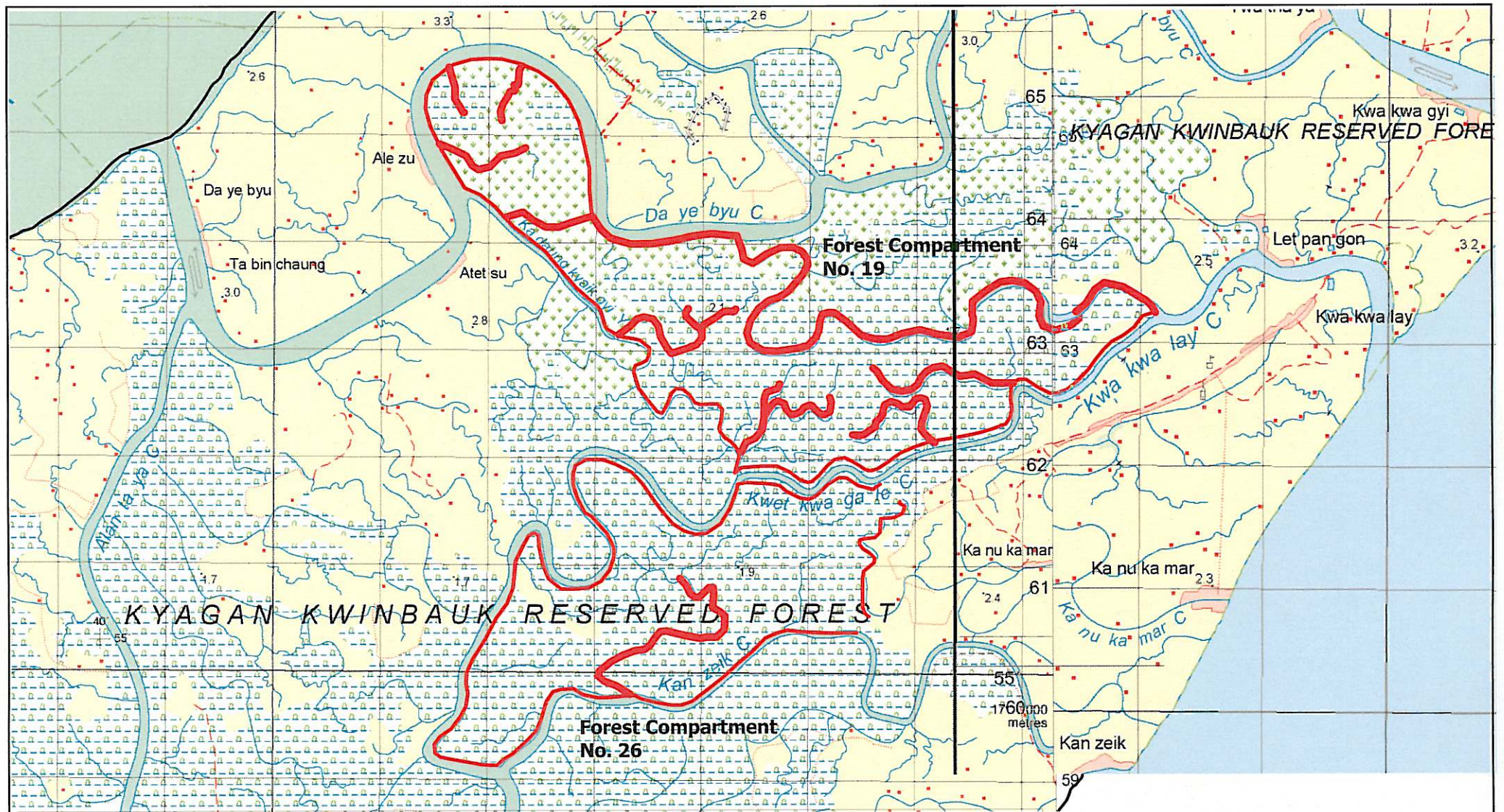


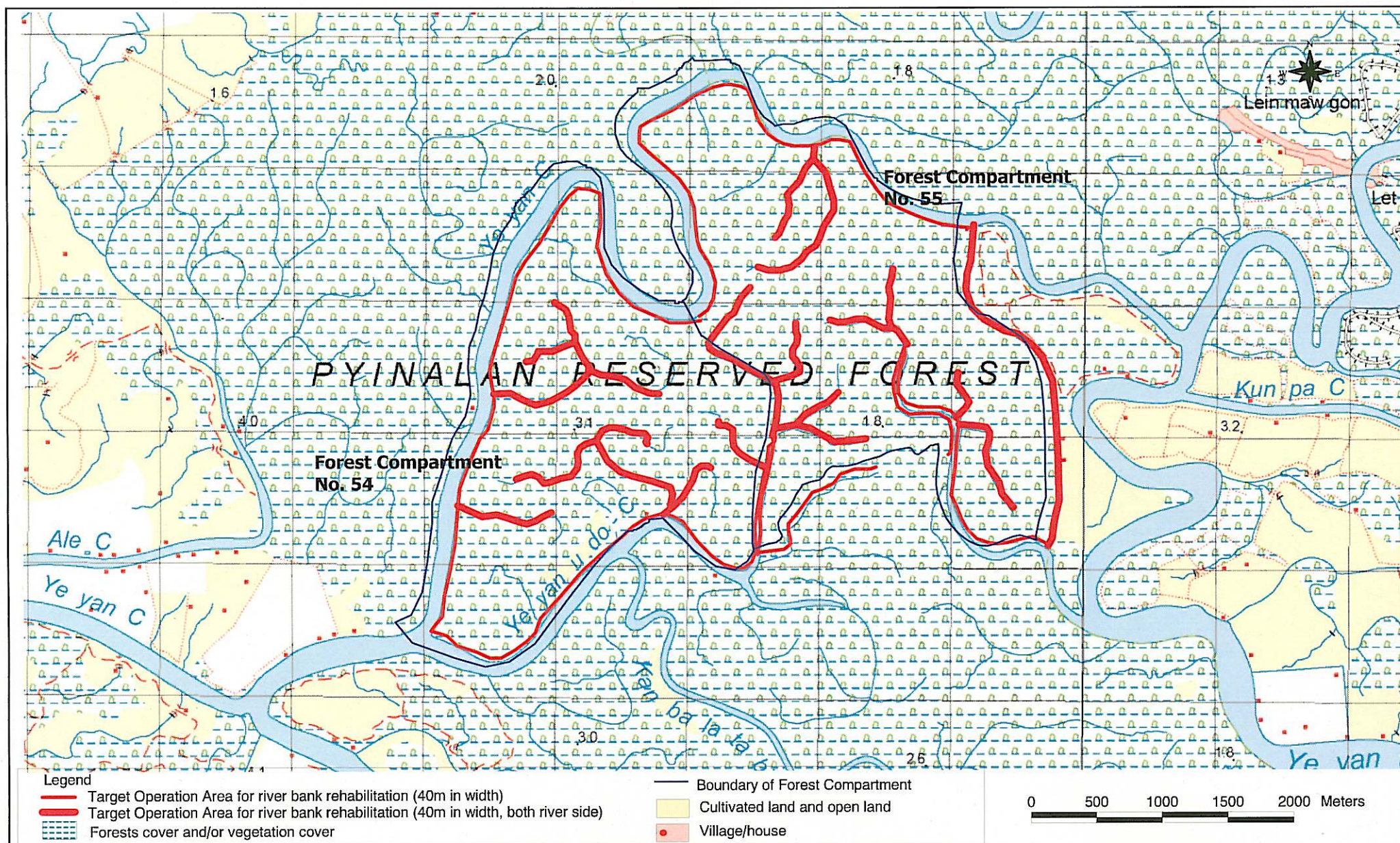
## Chapter 3

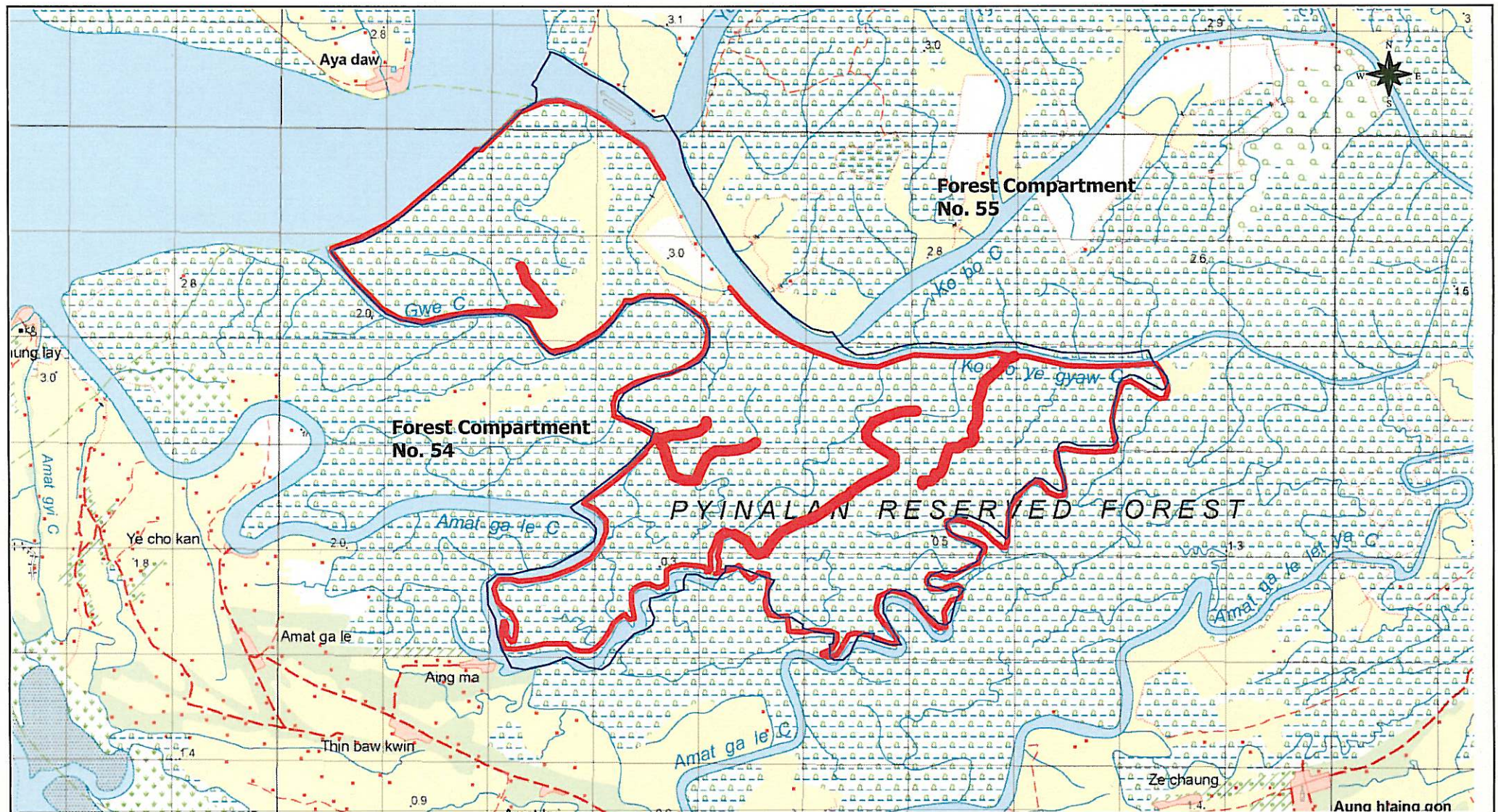
### *Target Project Area for FD Action Research of Option Plan of the IMMP Phase I*

- Figure3-1: Target project area for FD Action Research of the IMMP
- Figure3-2: Target project area for FD Action Research of Option Plan of the IMMP Phase I  
(The Kyakankwinpauk Reserved Forest No.19 & 26)
- Figure3-3: Target project area for FD Action Research of Option Plan of the IMMP Phase I  
(The Pyinalan Reserved Forest No.54 & 55)
- Figure3-4: Target project area for FD Action Research of Option Plan of the IMMP Phase I  
(The Pyinalan Reserved Forest No.65)
- Figure3-5: Target project area for FD Action Research of Option Plan of the IMMP Phase I  
(The Pyinalan Reserved Forest No.69)
- Figure3-6: Target project area for FD Action Research of Option Plan of the IMMP Phase I  
(The Kadonkani Reserved Forest No.14)
- Figure3-7: Target project area for FD Action Research of Option Plan of the IMMP Phase I  
(The Kadonkani Reserved Forest No.64)
- Figure3-8: Target project area for FD Action Research of Option Plan of the IMMP Phase I  
(The Pyindaye Reserved Forest No.65)
- Figure3-9: Target project area for FD Action Research of Option Plan of the IMMP Phase I  
(The Pyindaye Reserved Forest No.66)





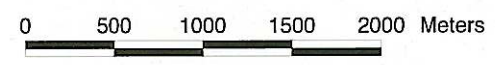
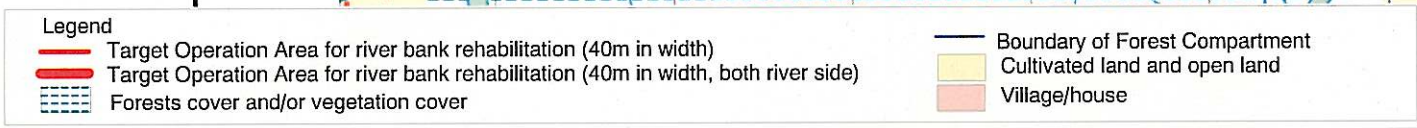
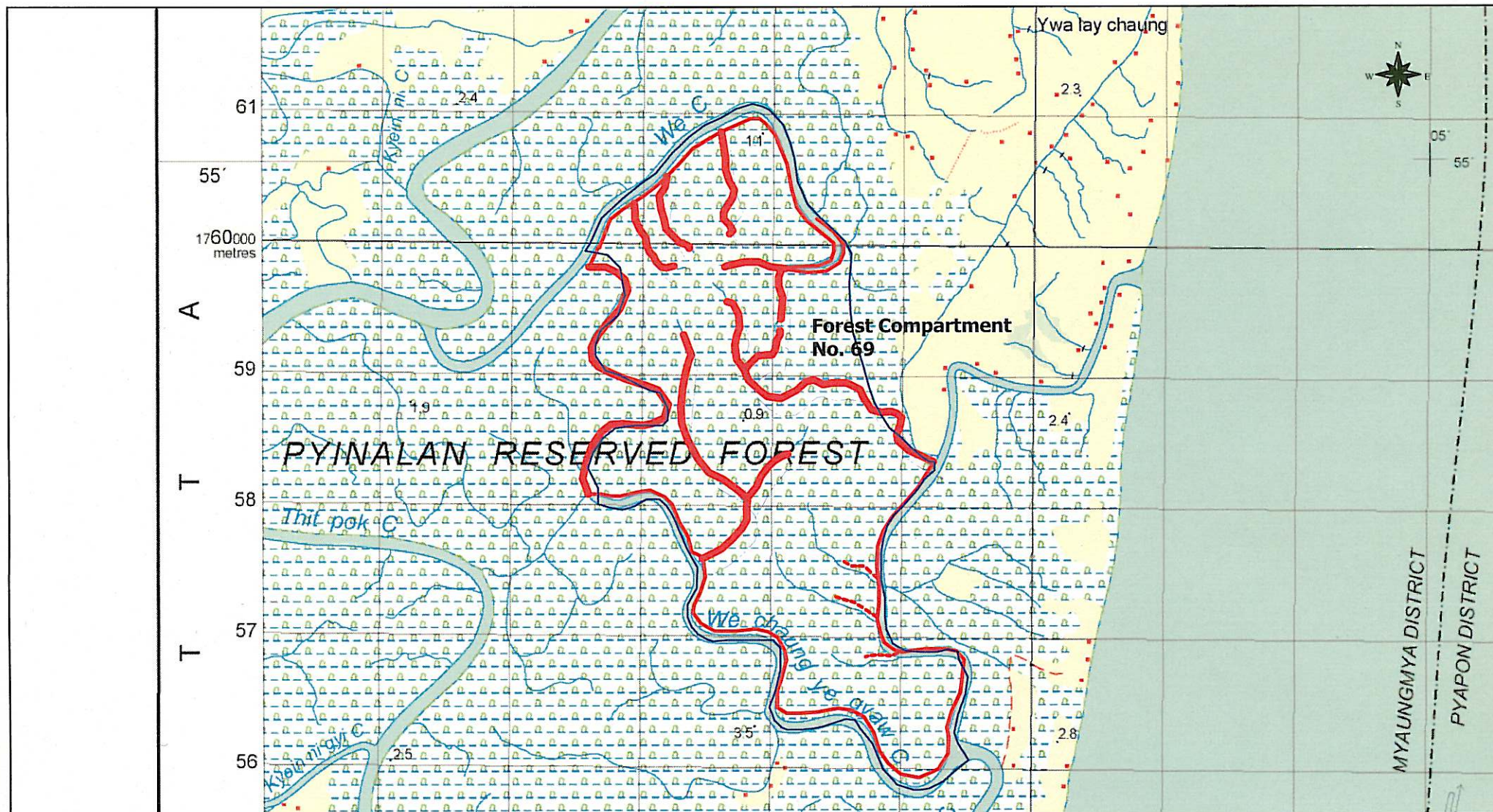


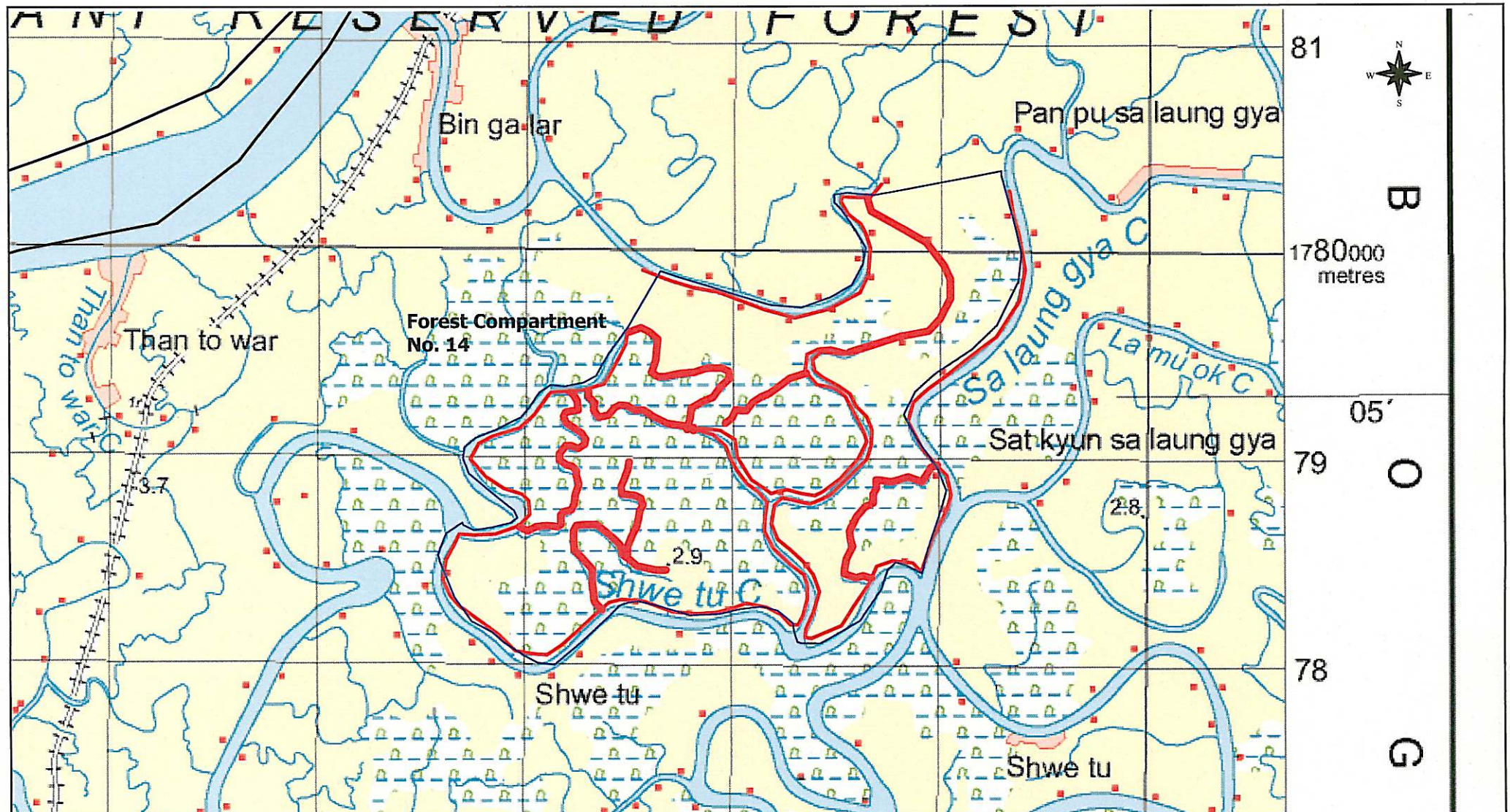


- Legend**
- Target Operation Area for river bank rehabilitation (40m in width)
  - Target Operation Area for river bank rehabilitation (40m in width, both river side)
  - Forests cover and/or vegetation cover

- Boundary of Forest Compartment
- Cultivated land and open land
- Village/house

0 500 1000 1500 2000 Meters

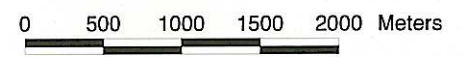
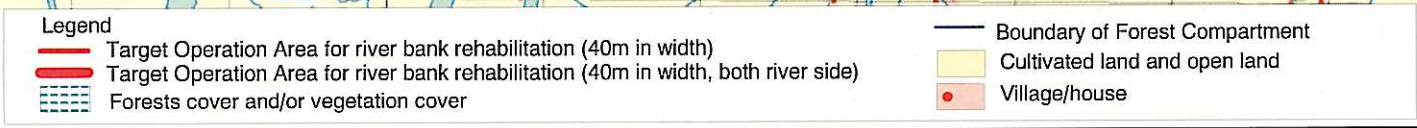
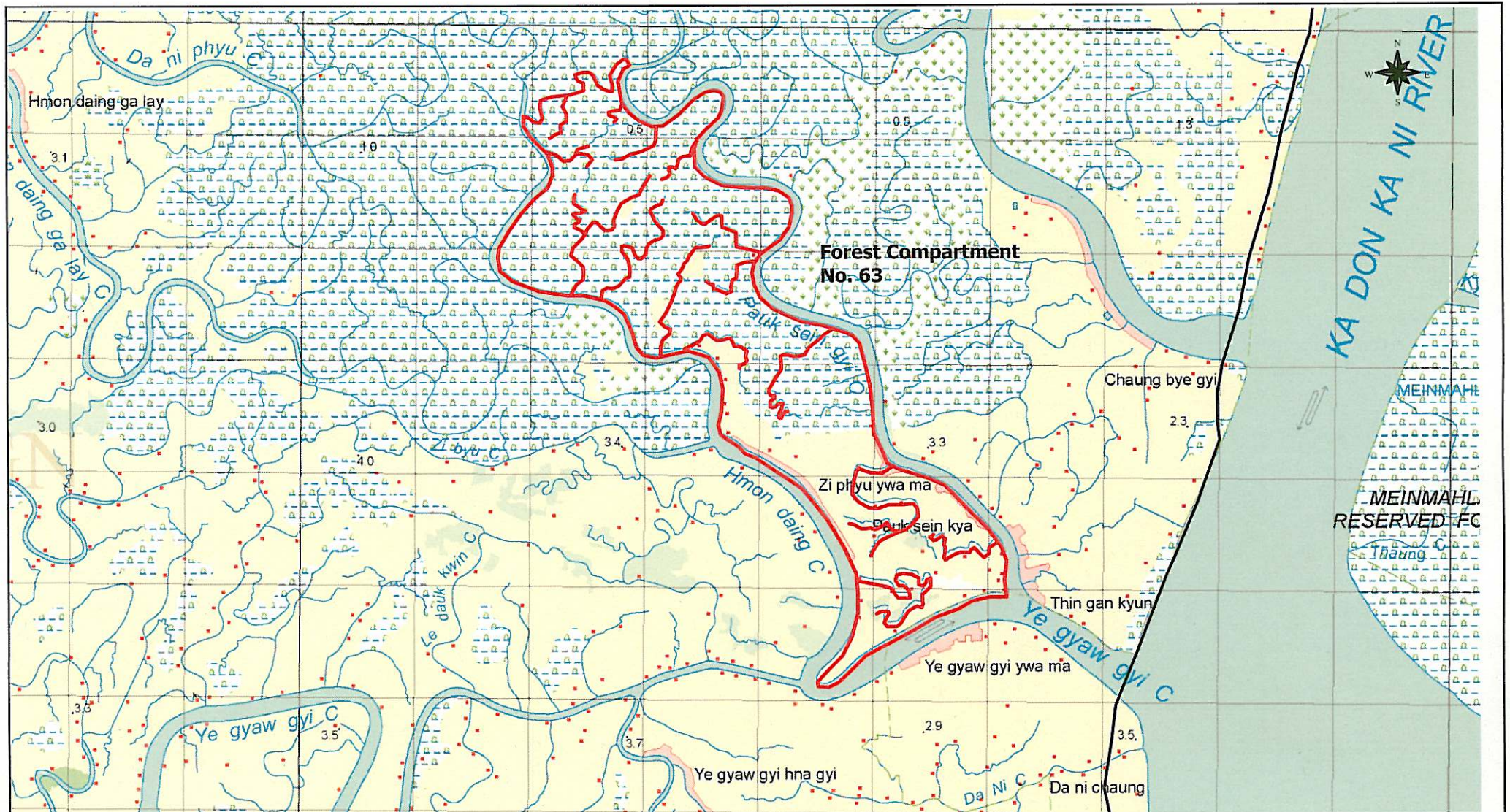




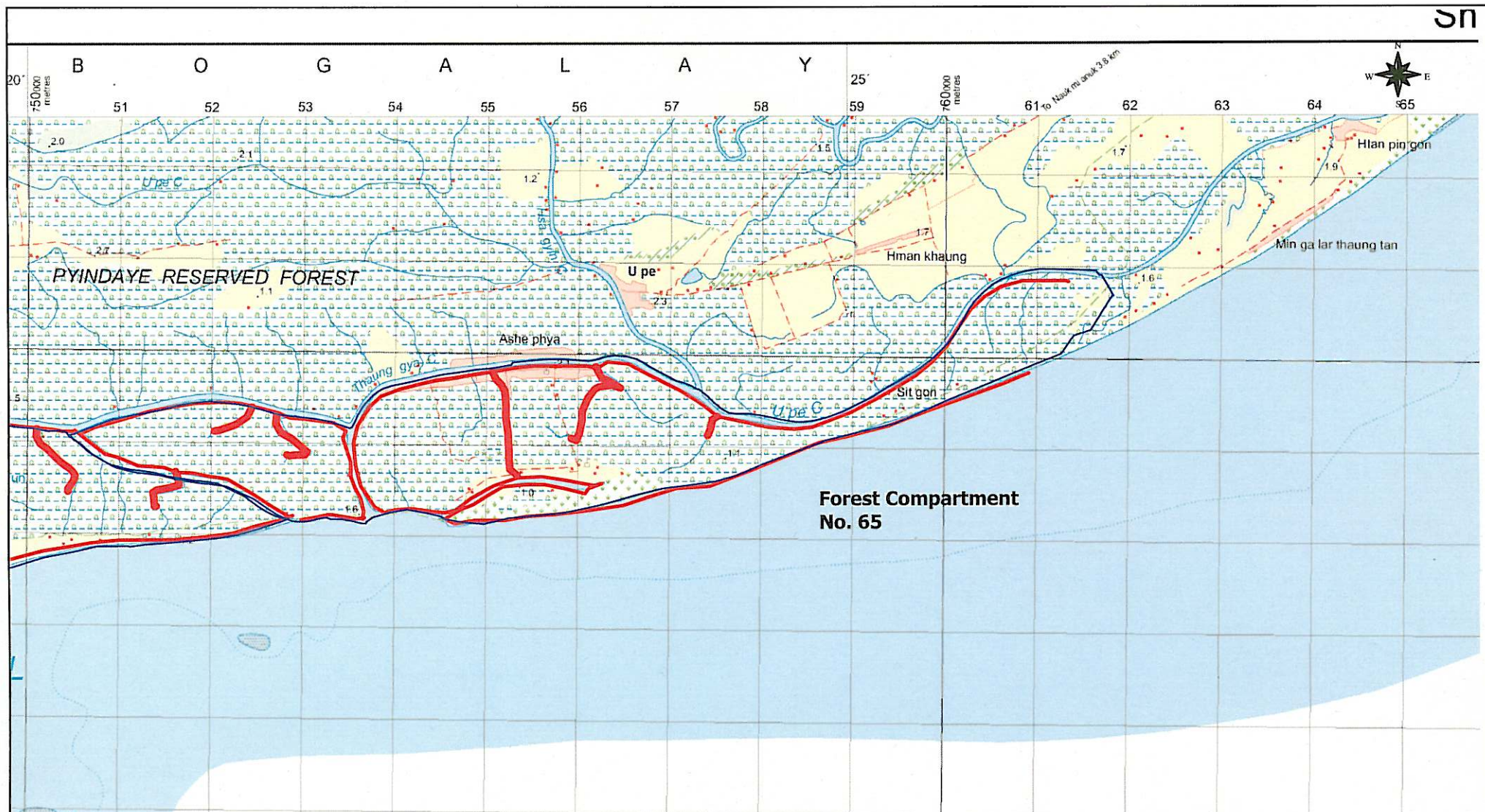
- Legend**
- FD Action Resrch Area (40m in width, one side) for Option Plan of the IMMP Phase I
  - FD Action Resrch Area (40m in width, both river side) for Option Plan of the IMMP Phase I
  - Boundary of Forest Compartment

- Forest cover
- Cultivated land and open land
- Village/house









<b>Legend</b>	
Target Operation Area for river bank rehabilitation (40m in width)	Boundary of Forest Compartment
Target Operation Area for river bank rehabilitation (40m in width, both river side)	Cultivated land and open land
Forests cover and/or vegetation cover	Village/house



