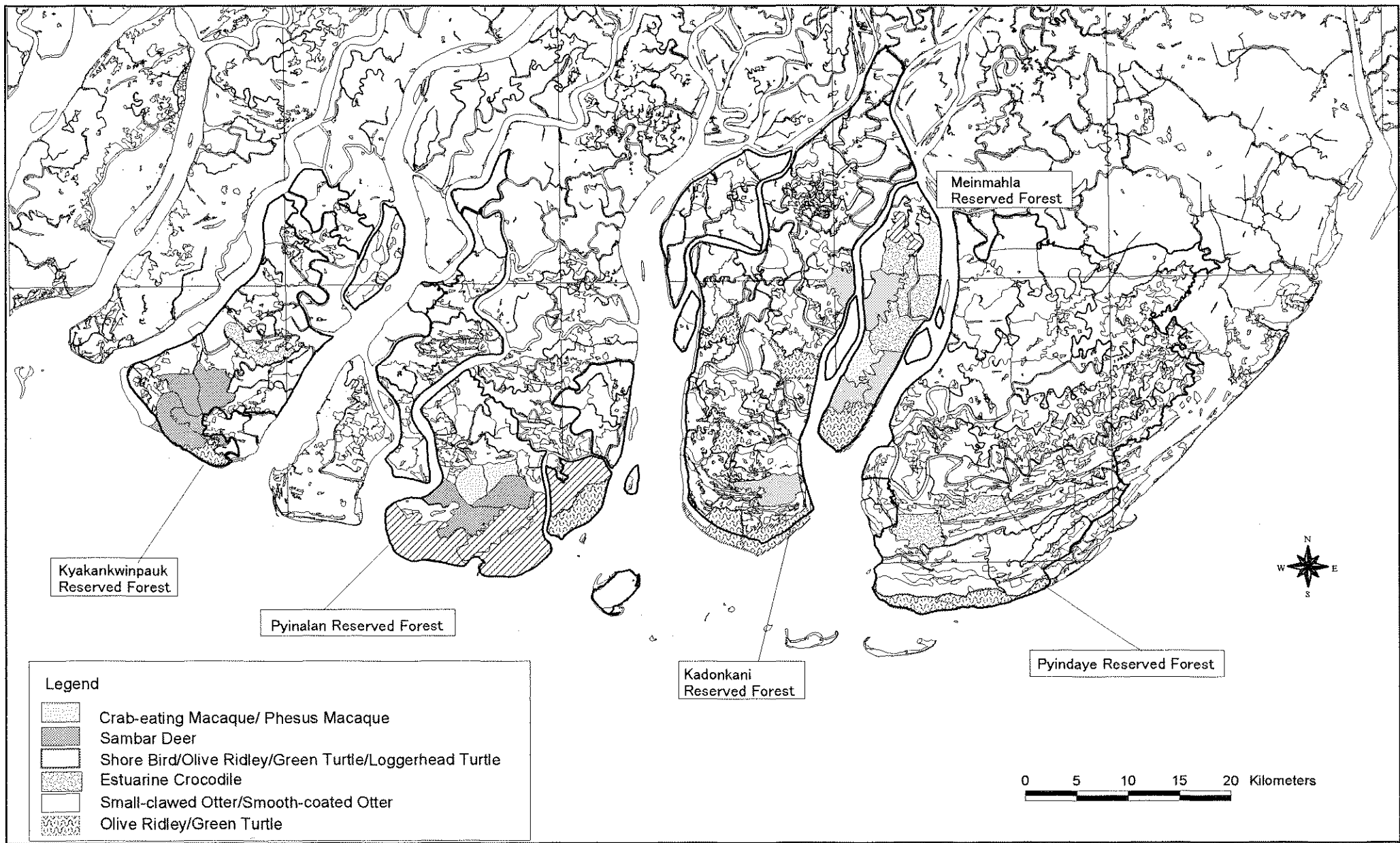
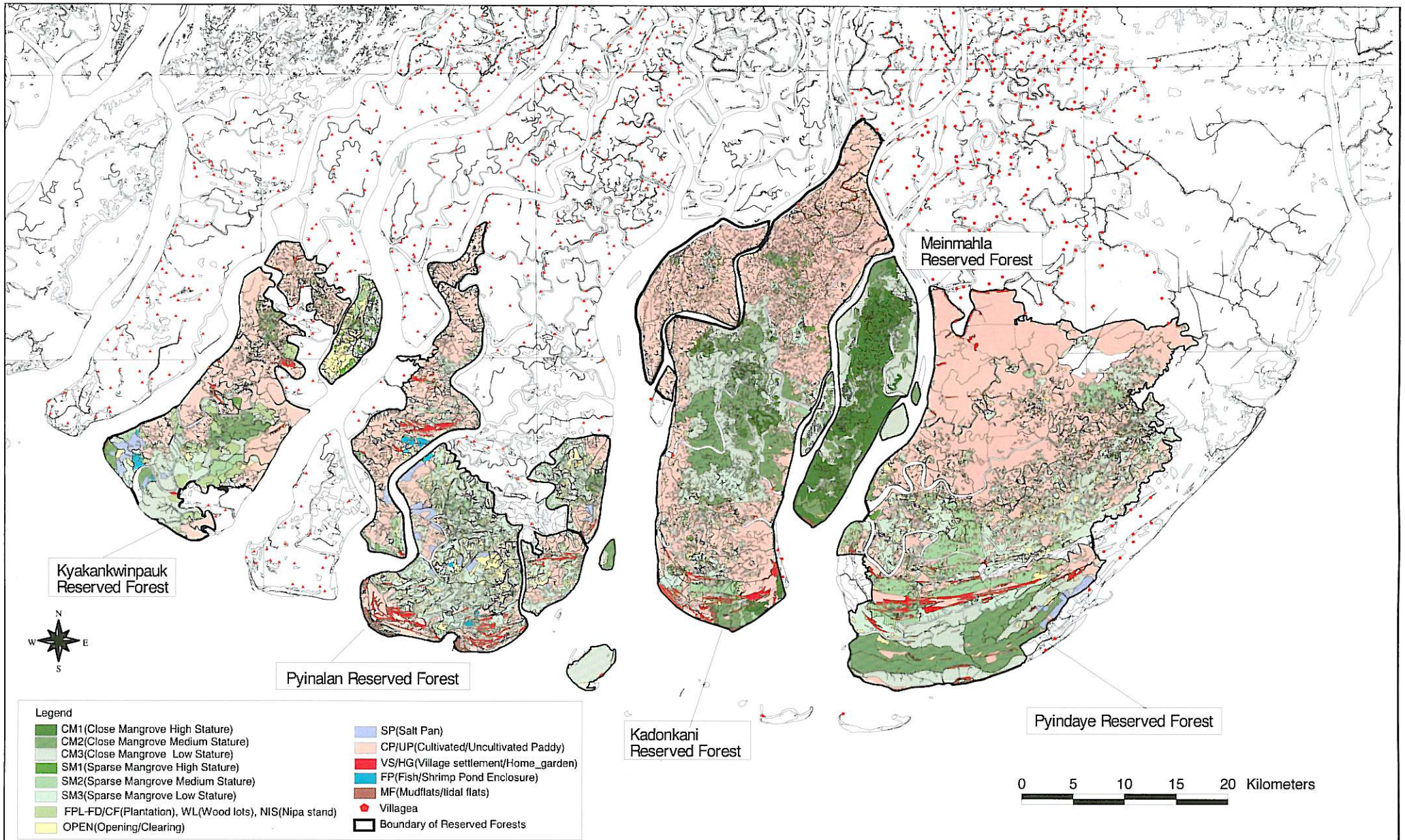
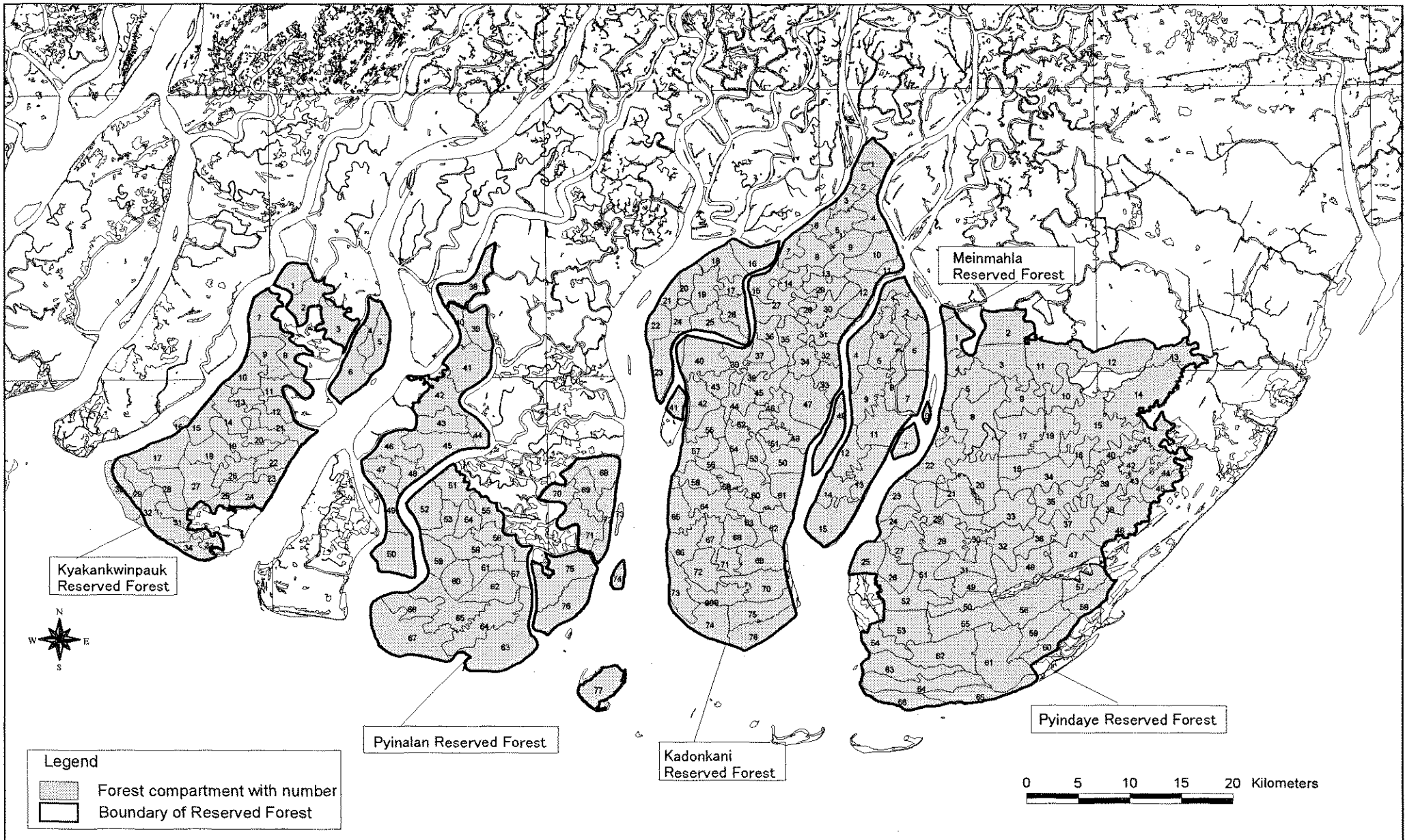
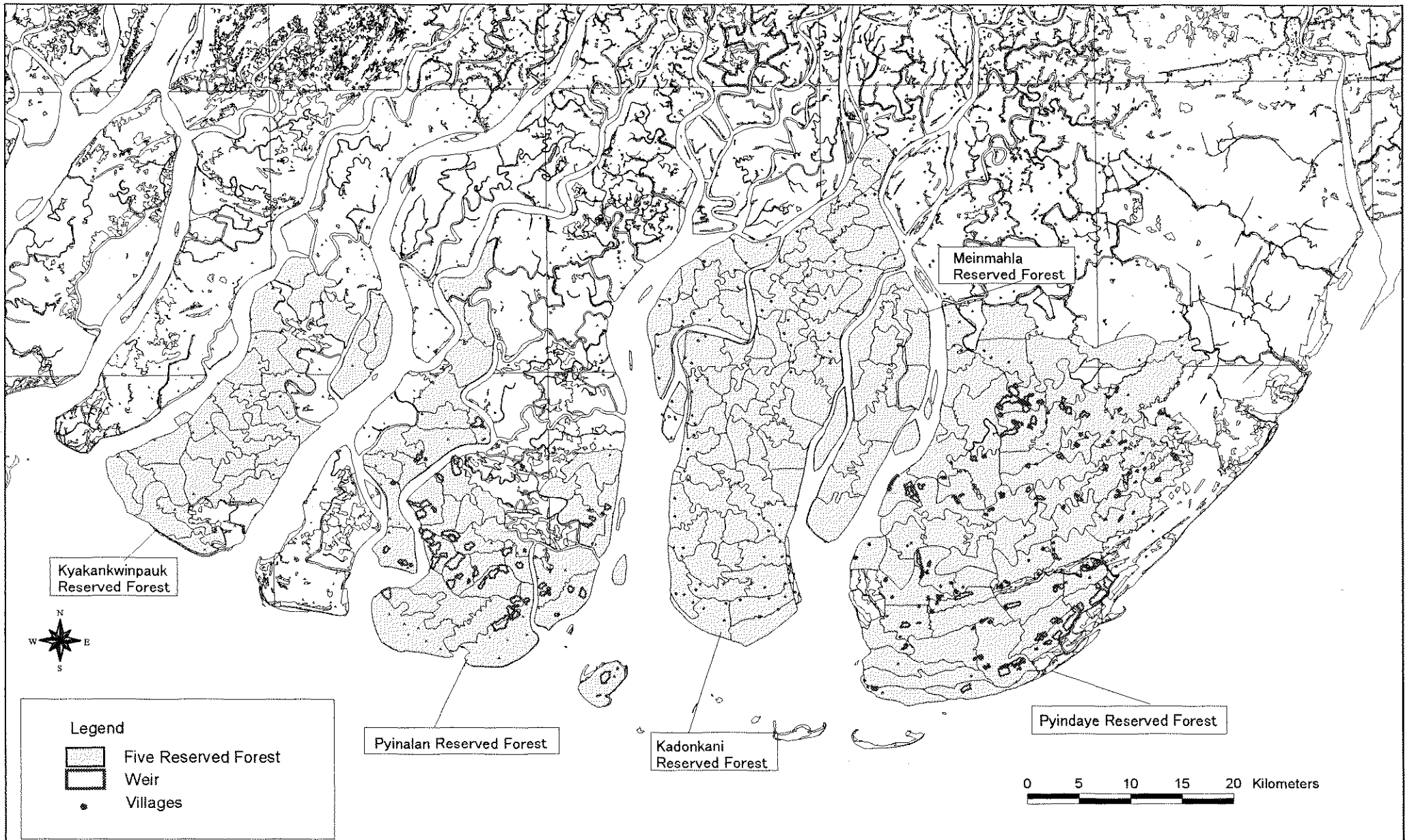


Figures









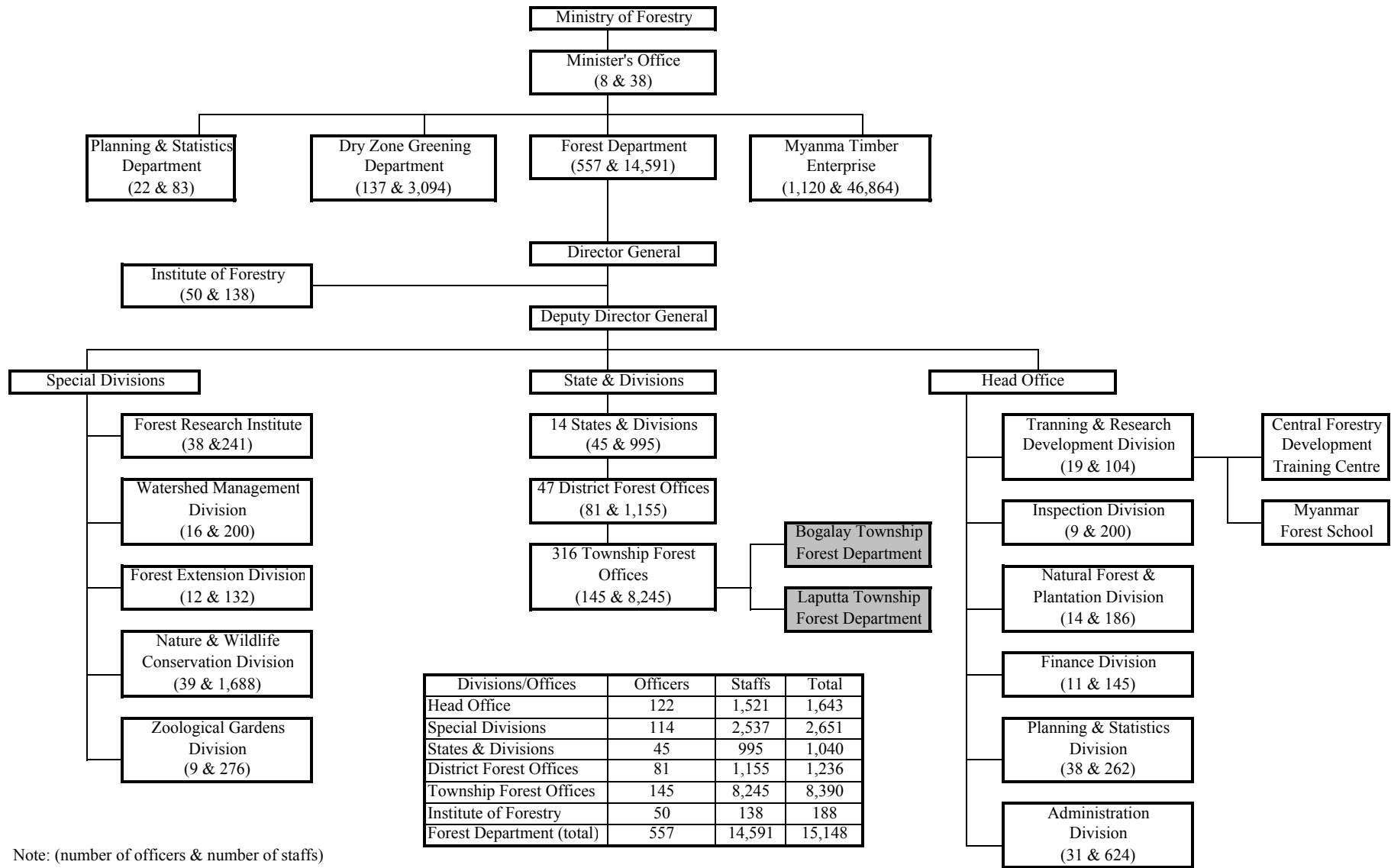
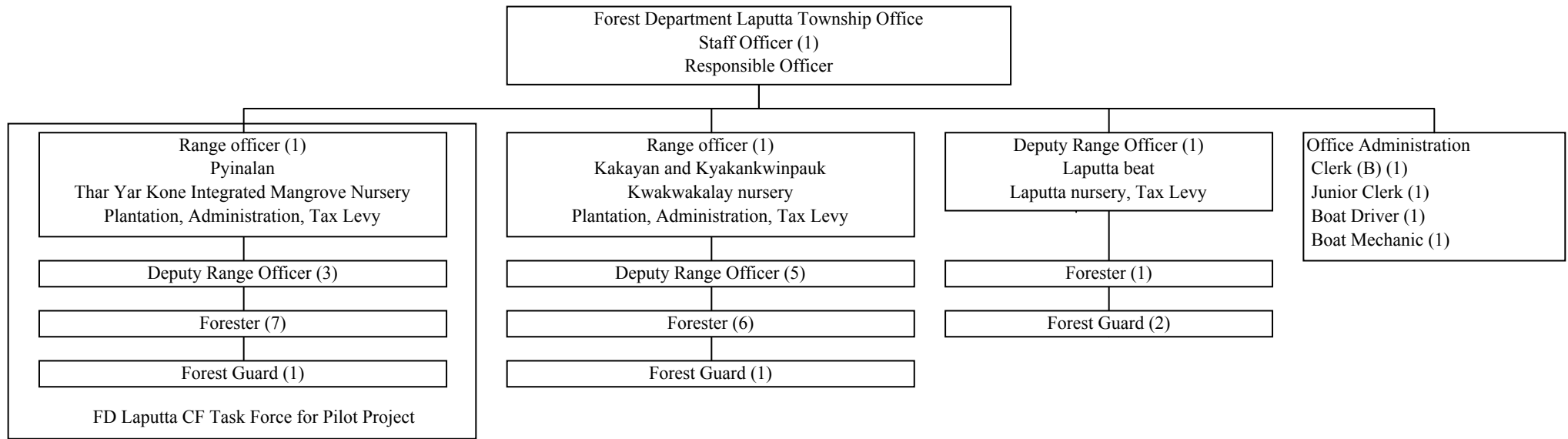
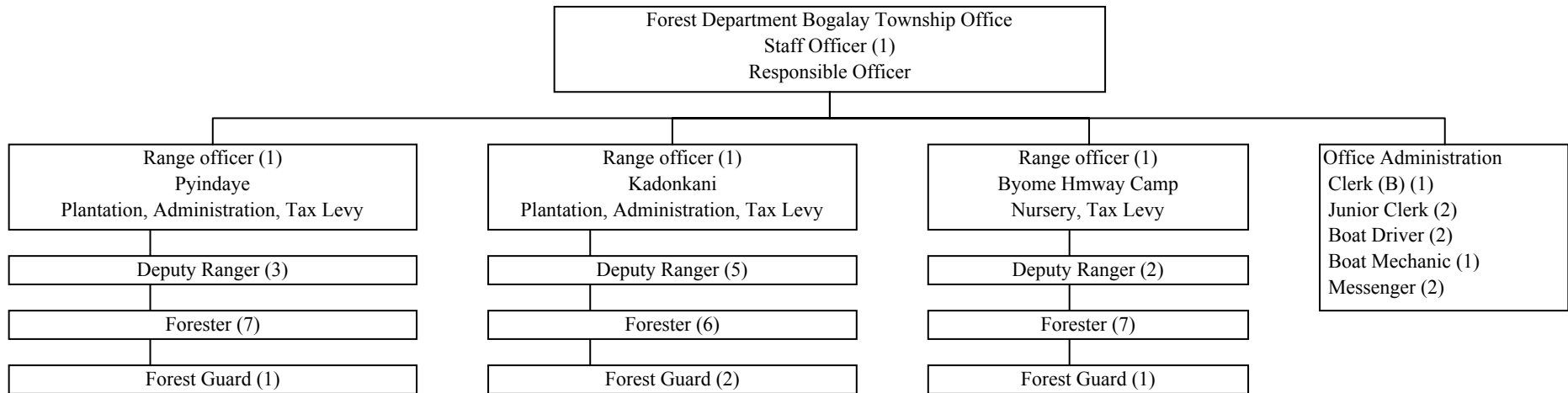


Figure 3.1 Organization Chart of Forest Department

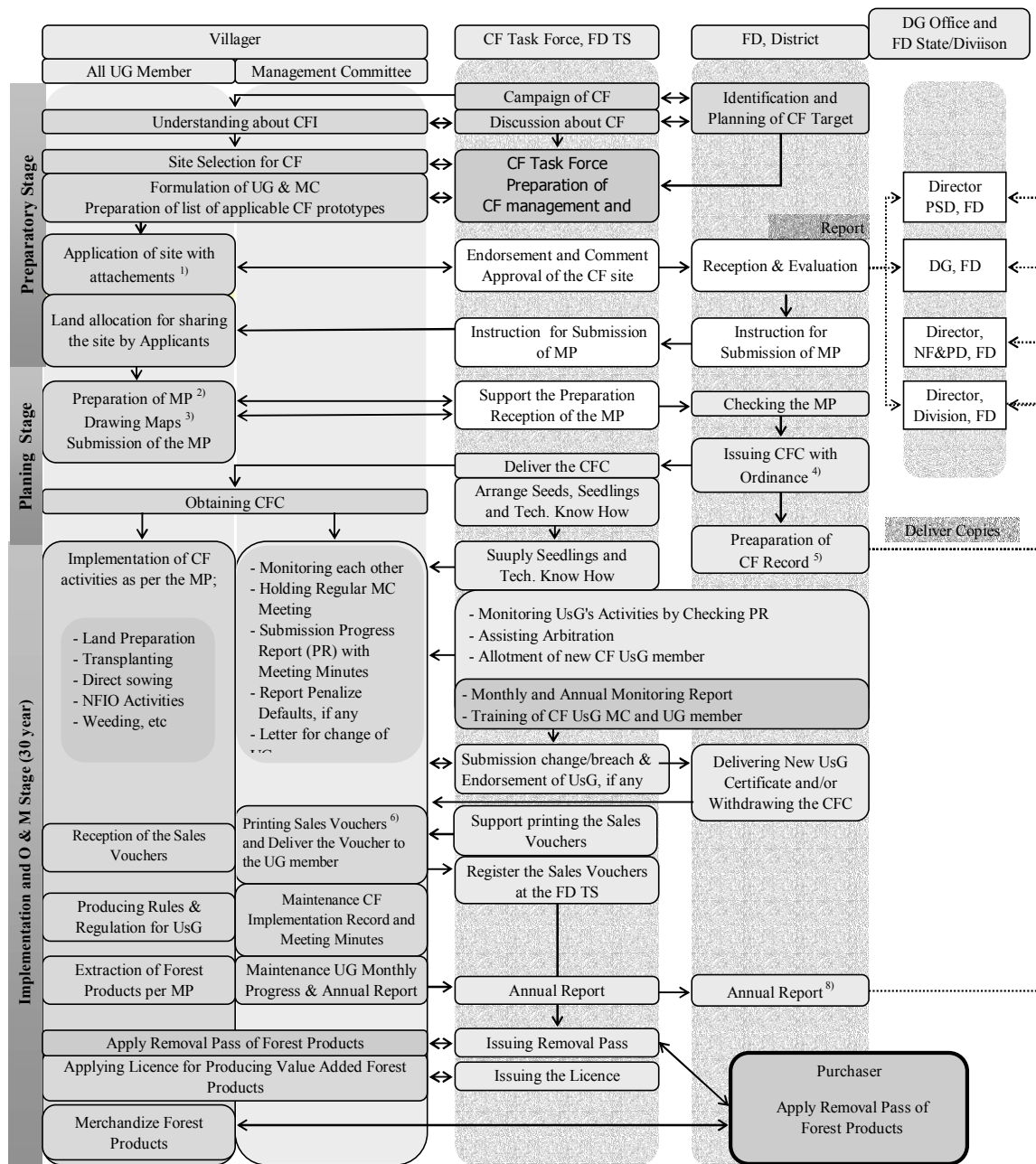


Sources: Forest Department Laputta Township Office



Sources: Forest Department Bogalay Township Office

Figure 3.2 Organization Chart of Laputta and Bogalay Township FD Offices, October, 2004



- Notes: 1) Attachements are 1) PRA map, 2) Appendix "form 1", 3) Member list & signature, and 4) Meeting minutes
 2) Selection of species, establishment of plantation and maintenance and rehabilitaiton of natural degraded forest (NFIO)
 3) Maps are 1) Location map, 2) Stock map, and 3) Management map
 4) The ordinances are; 1) CFI, 2) Forest Law, 3) Forest rules and regulations, and 4) Special Instruction for CF
 5) The CF record is composed by; 1) Application, 2) Approval of township beat officer, 3) Approval of Asst. Director.
 6) Three kinds of sales vouchers for destribute forest products to 1) within the village, 2) withing the T.S. and 3) outside the T.
 7) The Rules and Regulation for UsG is constitution of the CF UsG. Required its preparation as of first activity of CF.
 8) The Annual Report is evaluated by ASD and reported.
 9) Bolded items are recommended subjects for reinforcement of the CFI operation.

Figure 3.4 Current Operation of Community Forestry Instruction

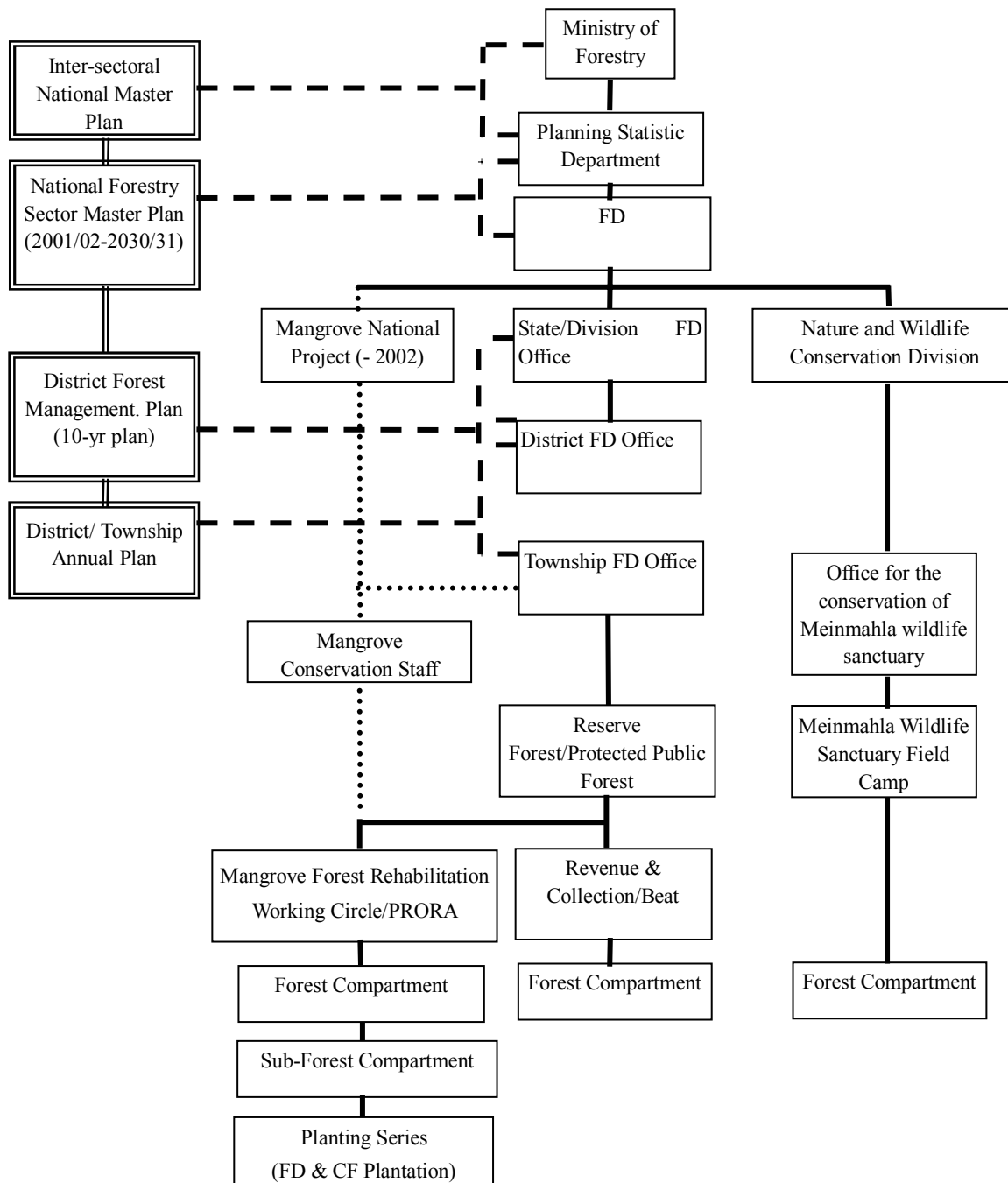


Figure 3.6 Current Planning and Monitoring System of Forestry Sector for Mangrove Protection and Plantation in Ayeyawady Division

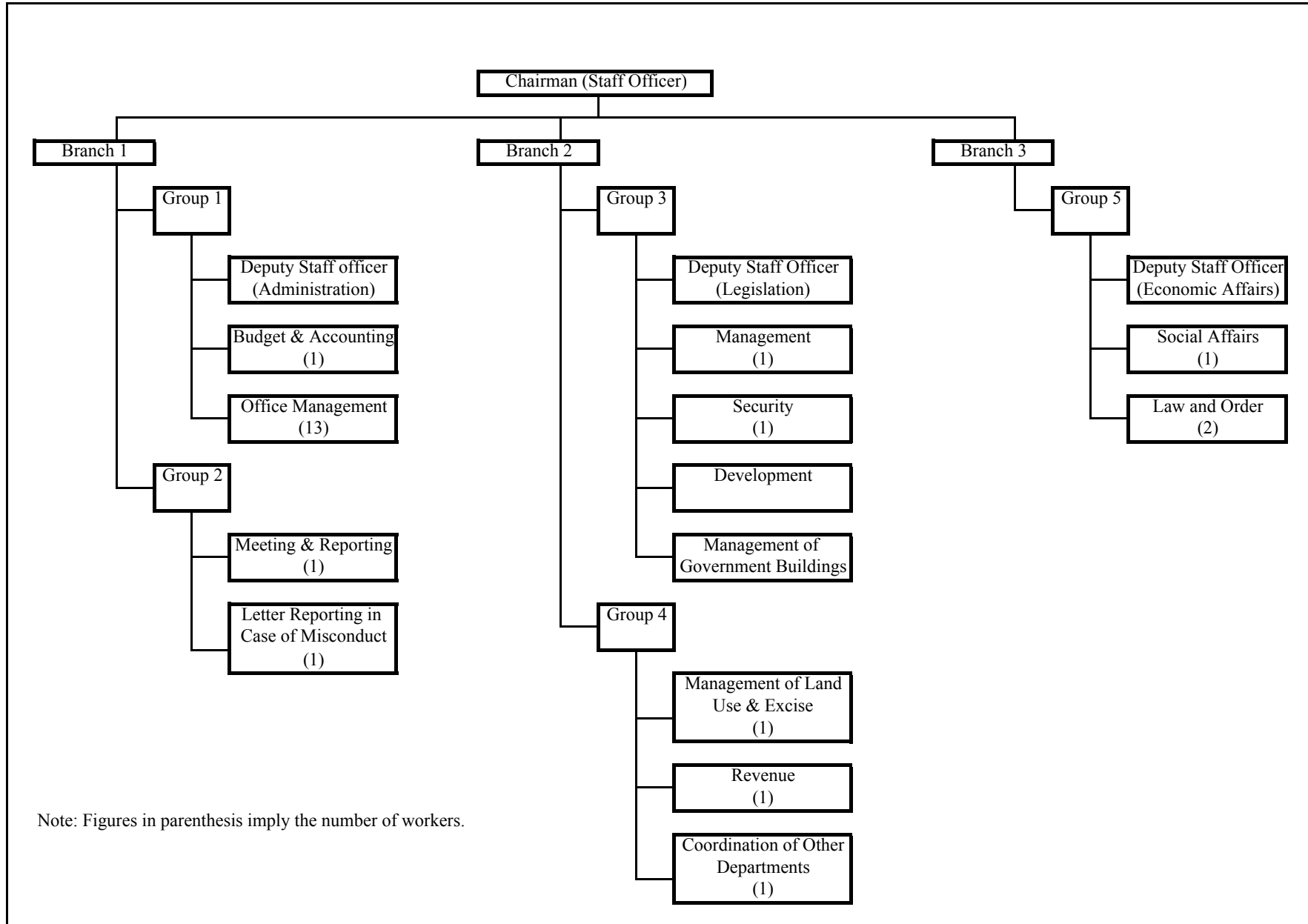
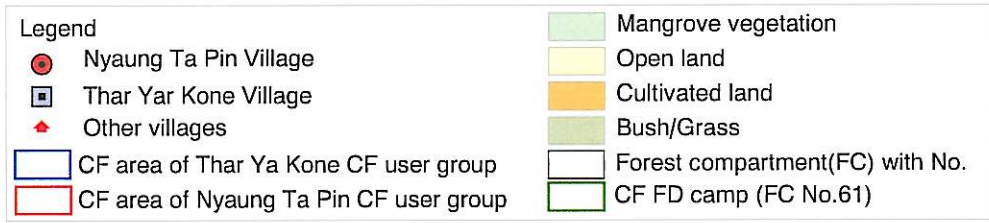
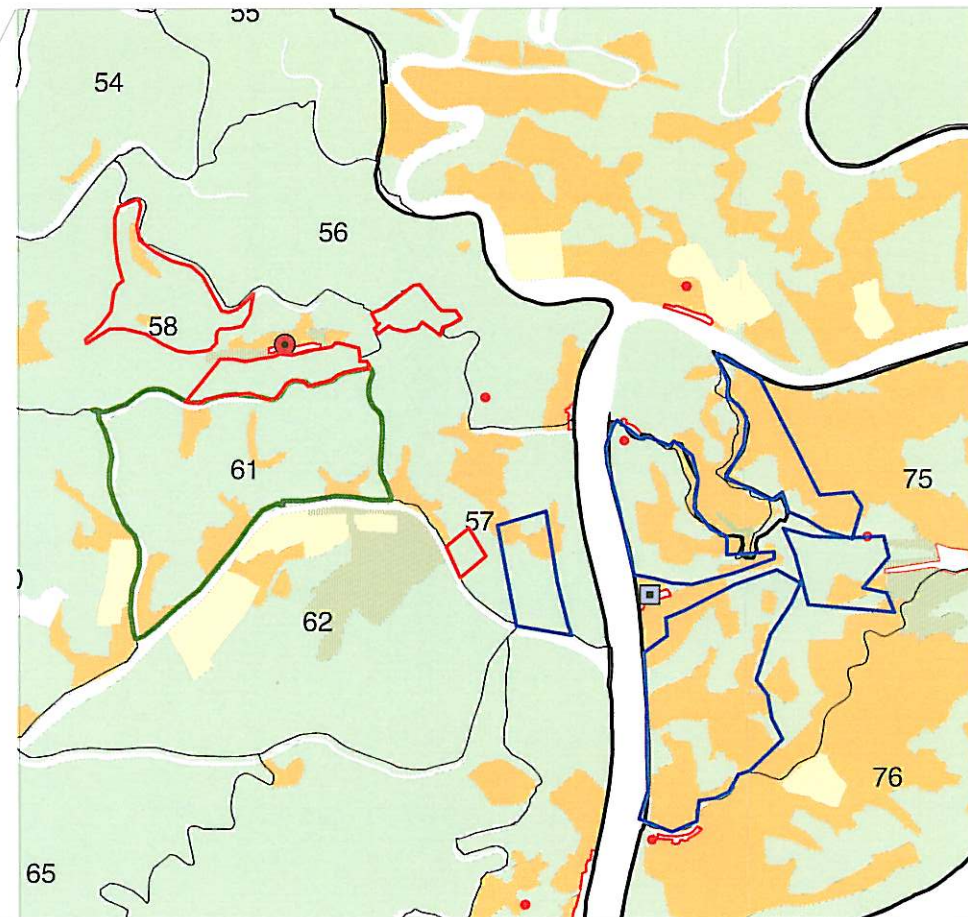
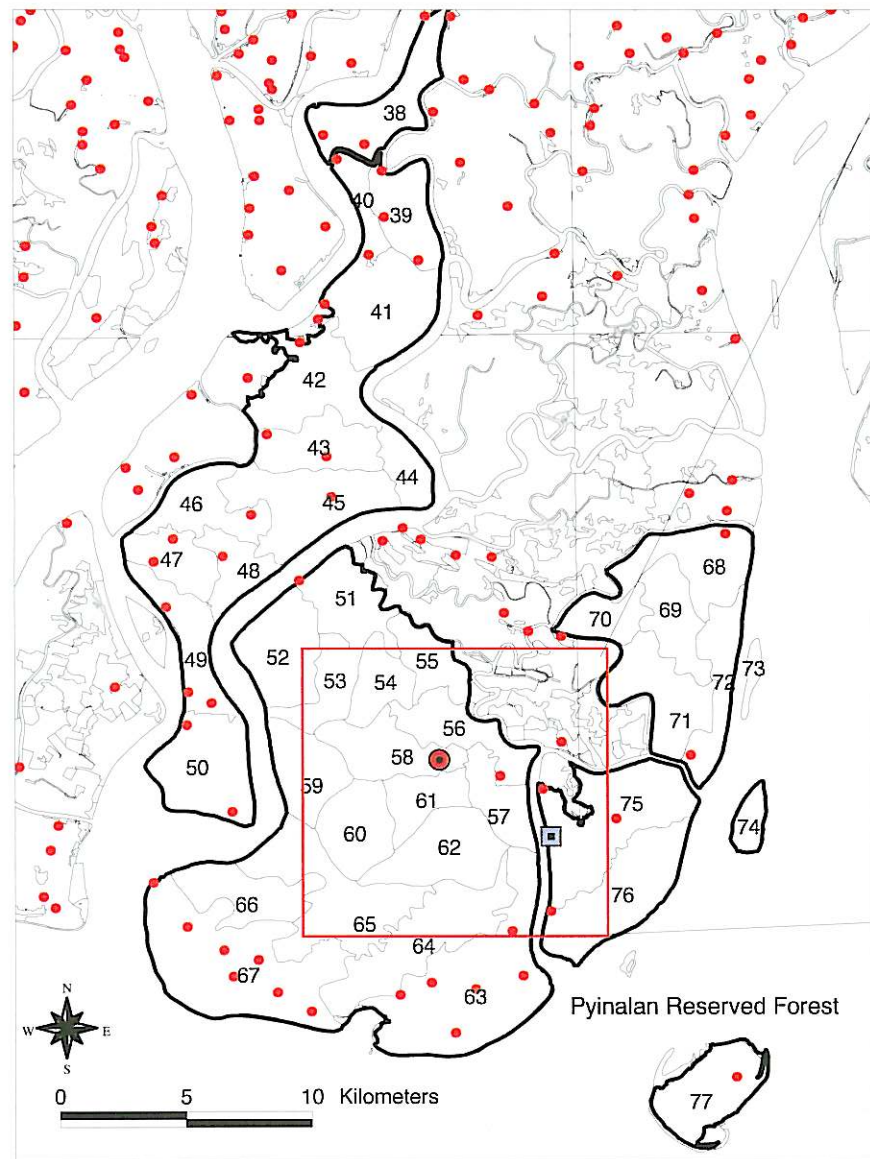


Figure 3.8 Organization Chart of Bogalay Township Peace and Development Council

Figure 4.2 Crop Calendar

Sr	Subject	Apr.	May	Jun	Jul	Aug	Sep	Oct	Nov	Dec	Jan	Feb	Mar
1	Monsoon Paddy				▱				▱				
2	Betel leaf				▱								
3	<i>Hygrophila obovata</i>	▱											▱
4	Okra (<i>Hibiscus esculentus</i>)							▱					
5	Water Convolvulus (<i>Ipomaea aquatica</i>)			▱									
6	Cucumber (<i>Cucumis sativus</i>)							▱					
7	Bitter gourd (<i>Momordica charantia</i>)								▱				
8	Ridge gourd								▱				
9	Wax gourd								▱				
10	Brinjal								▱				
11	Chili								▱				
12	Sweet potato								▱				
13	Taro				▱								
14	Roselle				▱				▱				
15	Mustard leaf								▱				
16	Winged Bean (<i>Dolichos tetragonolobus</i>)								▱				
17	Long Bean								▱				
18	Coriander								▱				
19	Coconut			▱									
20	Mango			▱									
21	Lime/ Guava			▱									
22	Banana			▱									
23	Areca Nut (Betel Nut)			▱									
24	Drum Stick				▱				▱				
25	Papaya				▱				▱				

▱ high season



Source: Topographic Map (2004), Forest Department, Ministry of Forestry

