

GEOLOGIA Y DEPOSITOS MINERALES

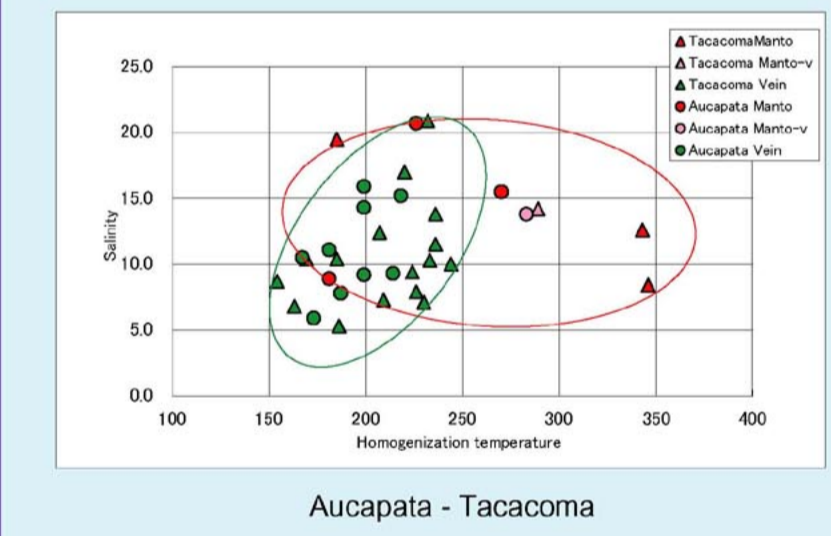
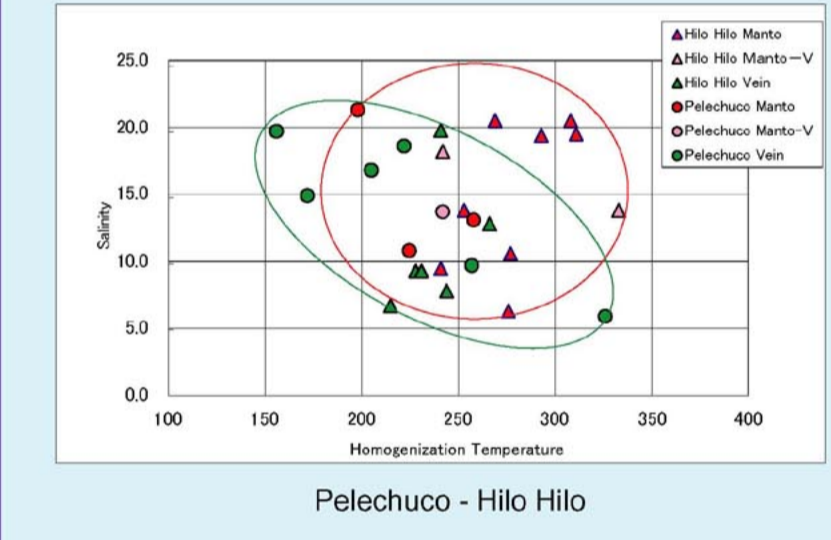
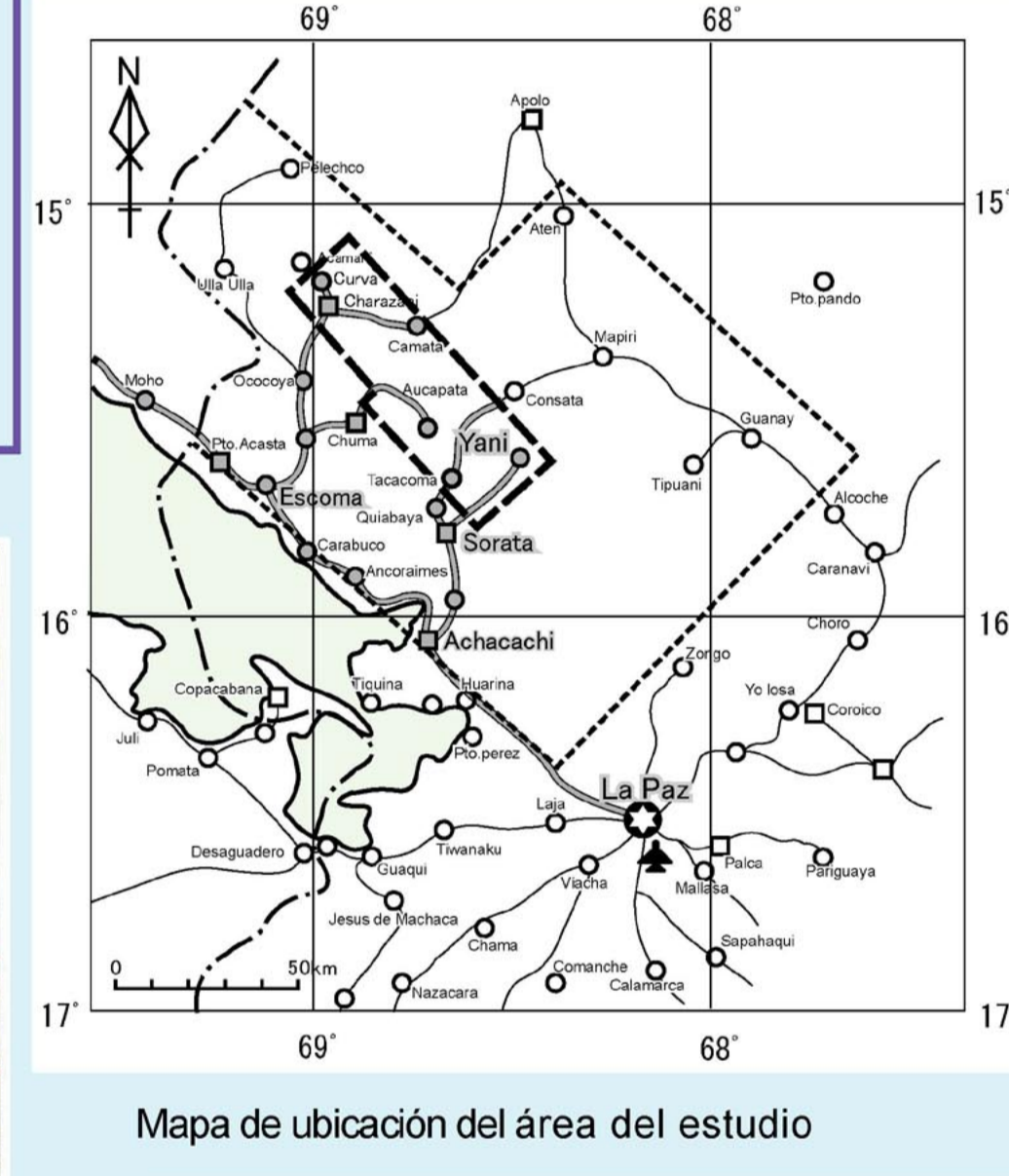
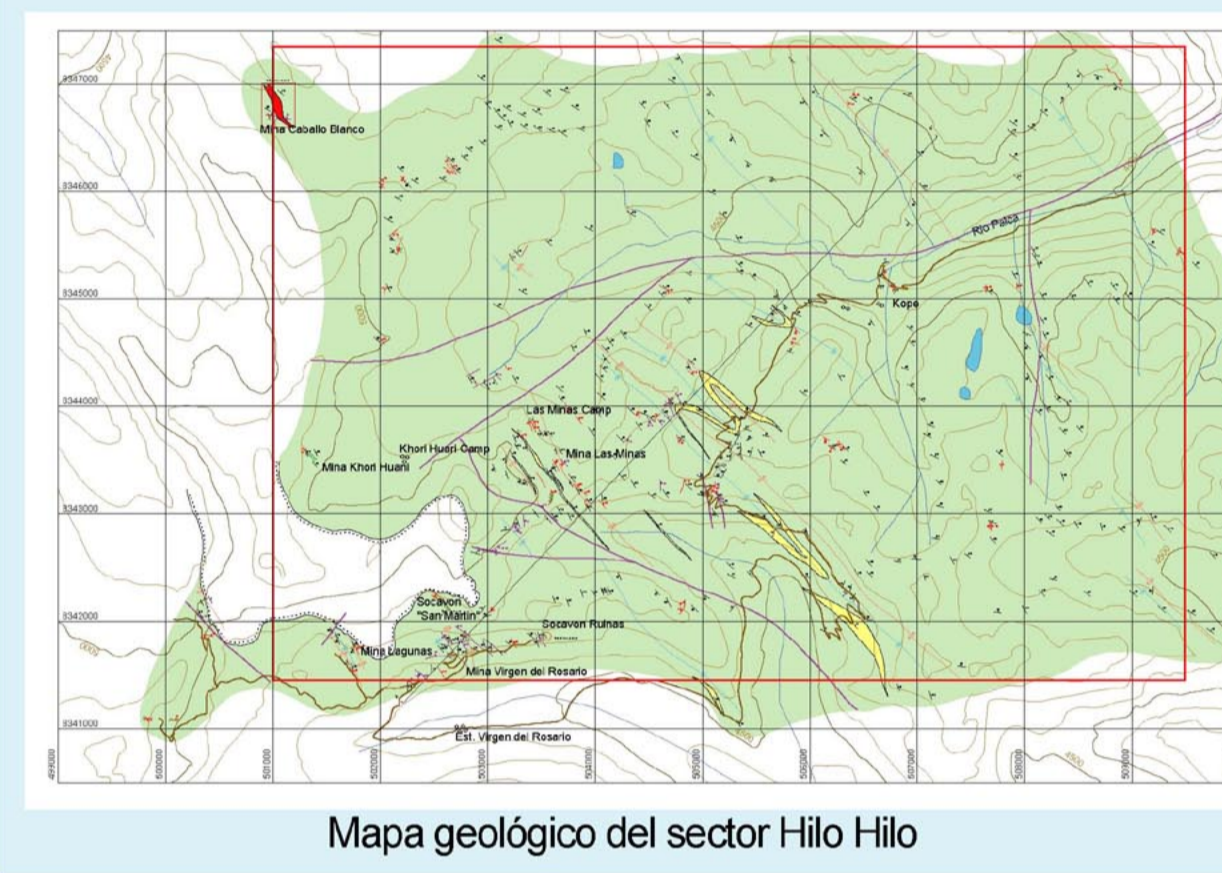
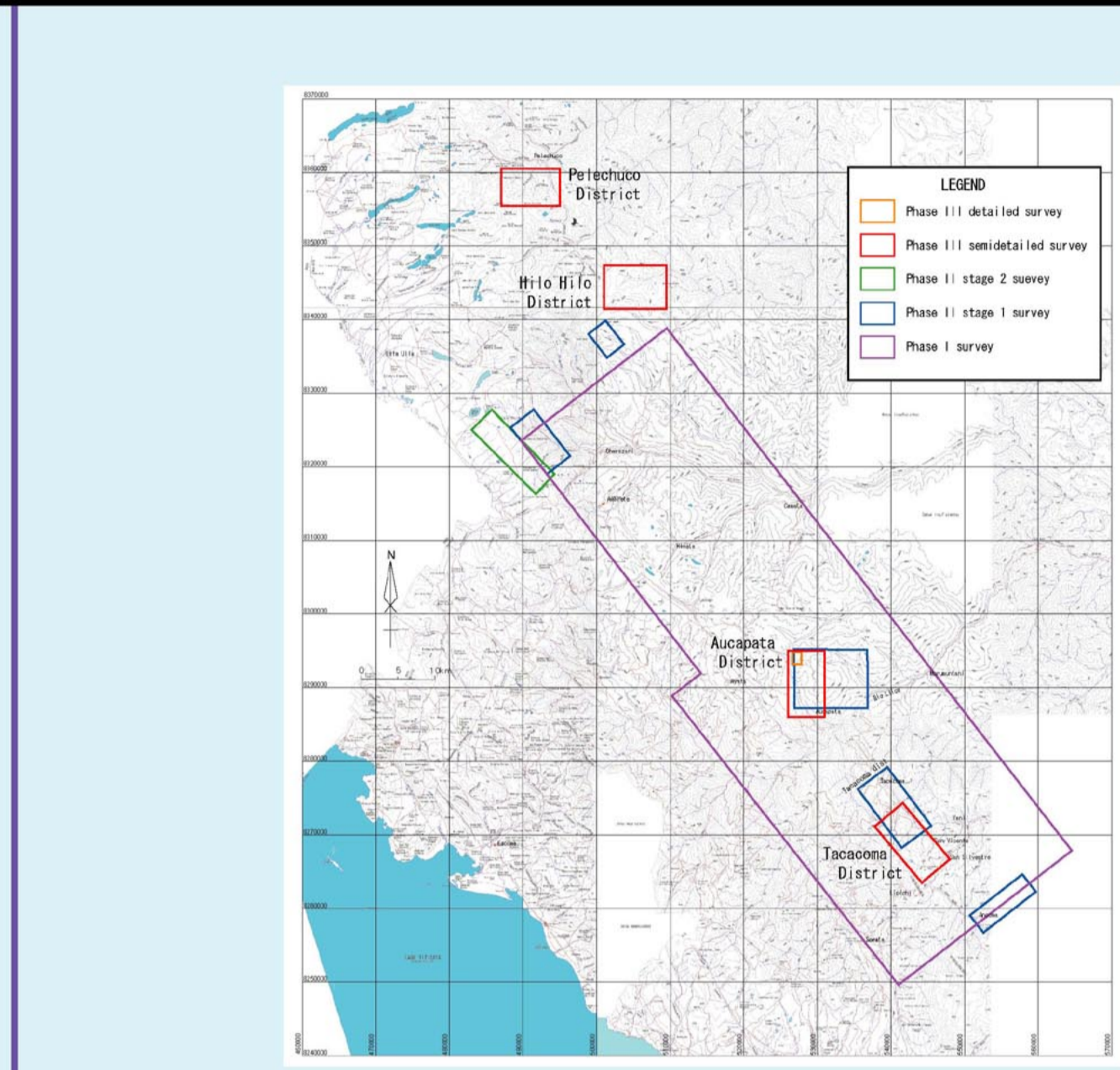
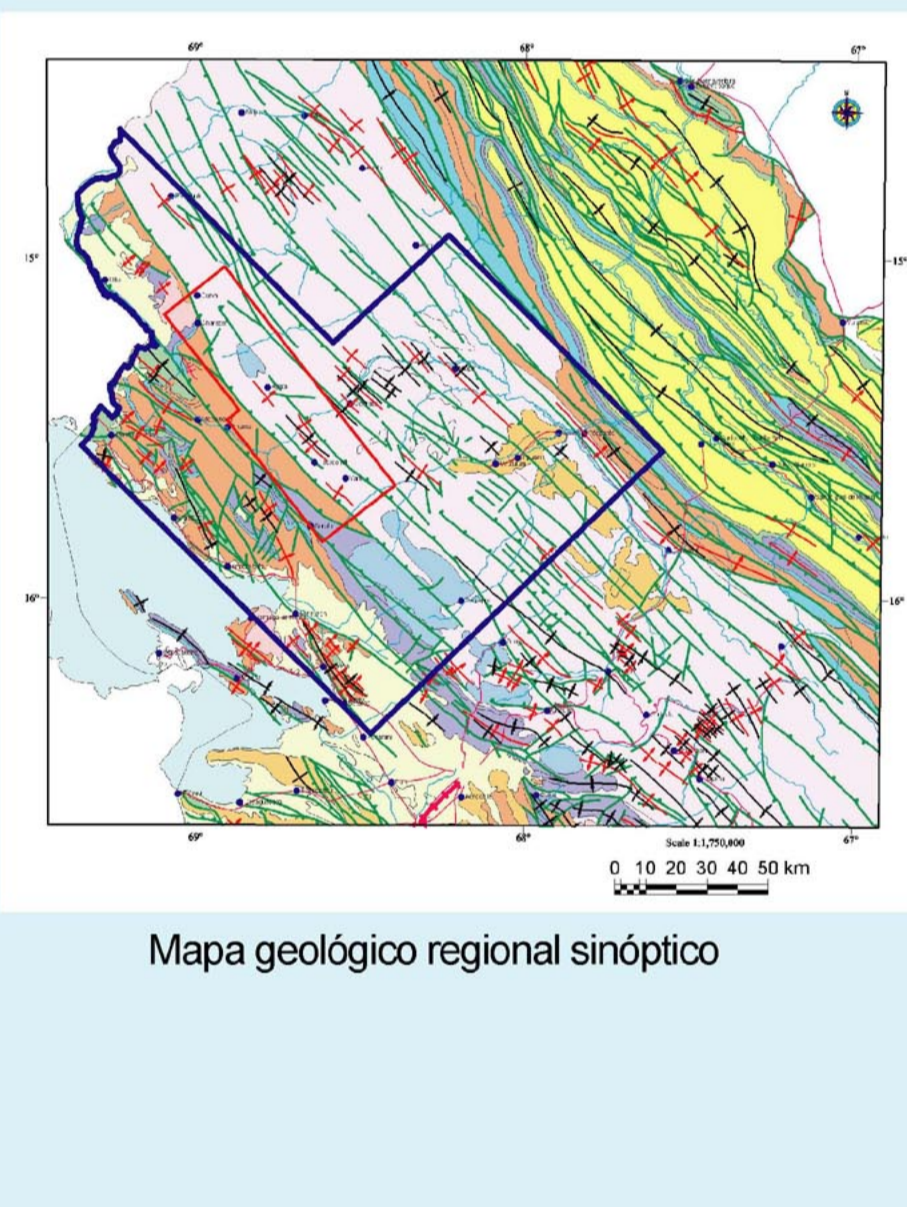
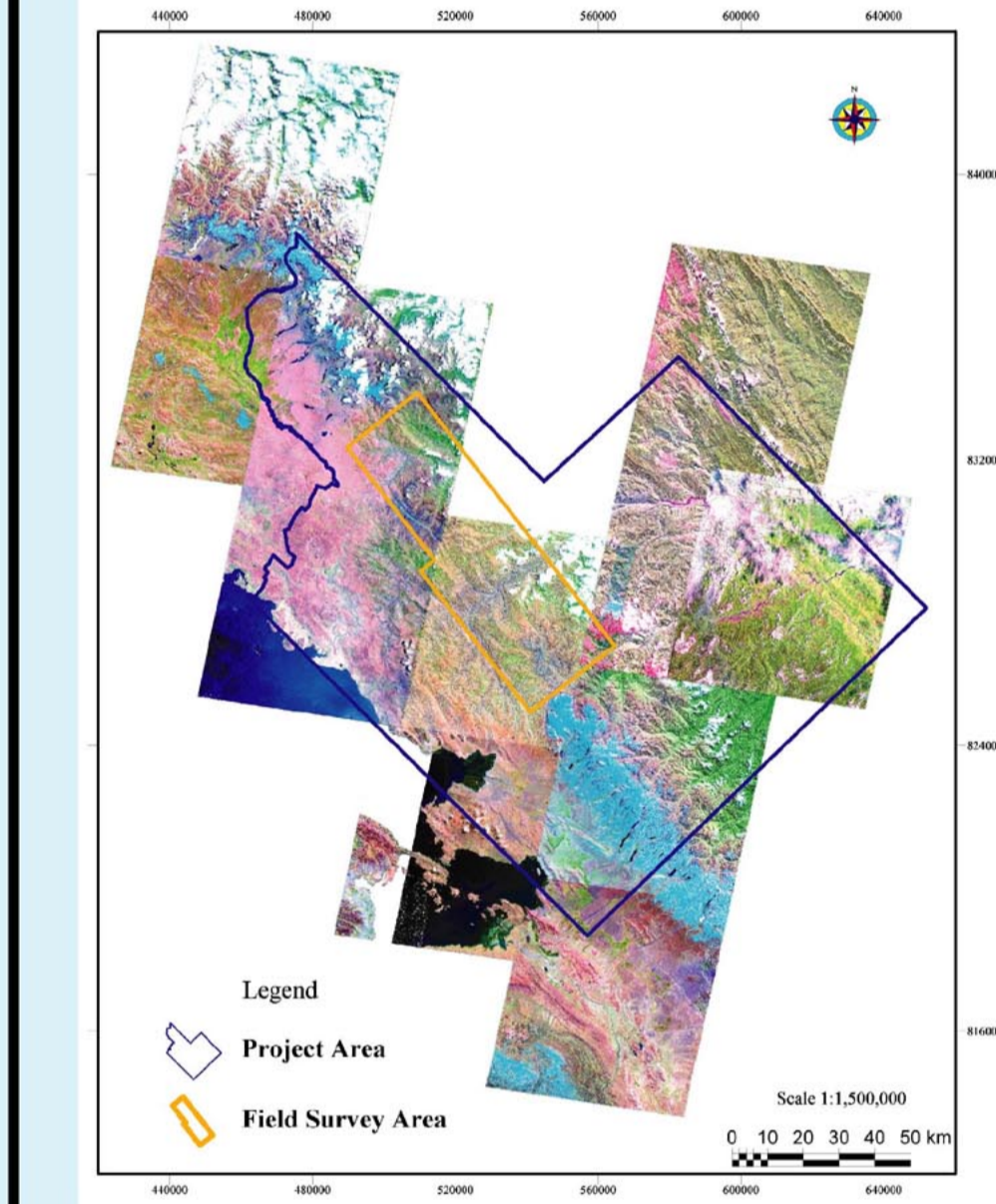
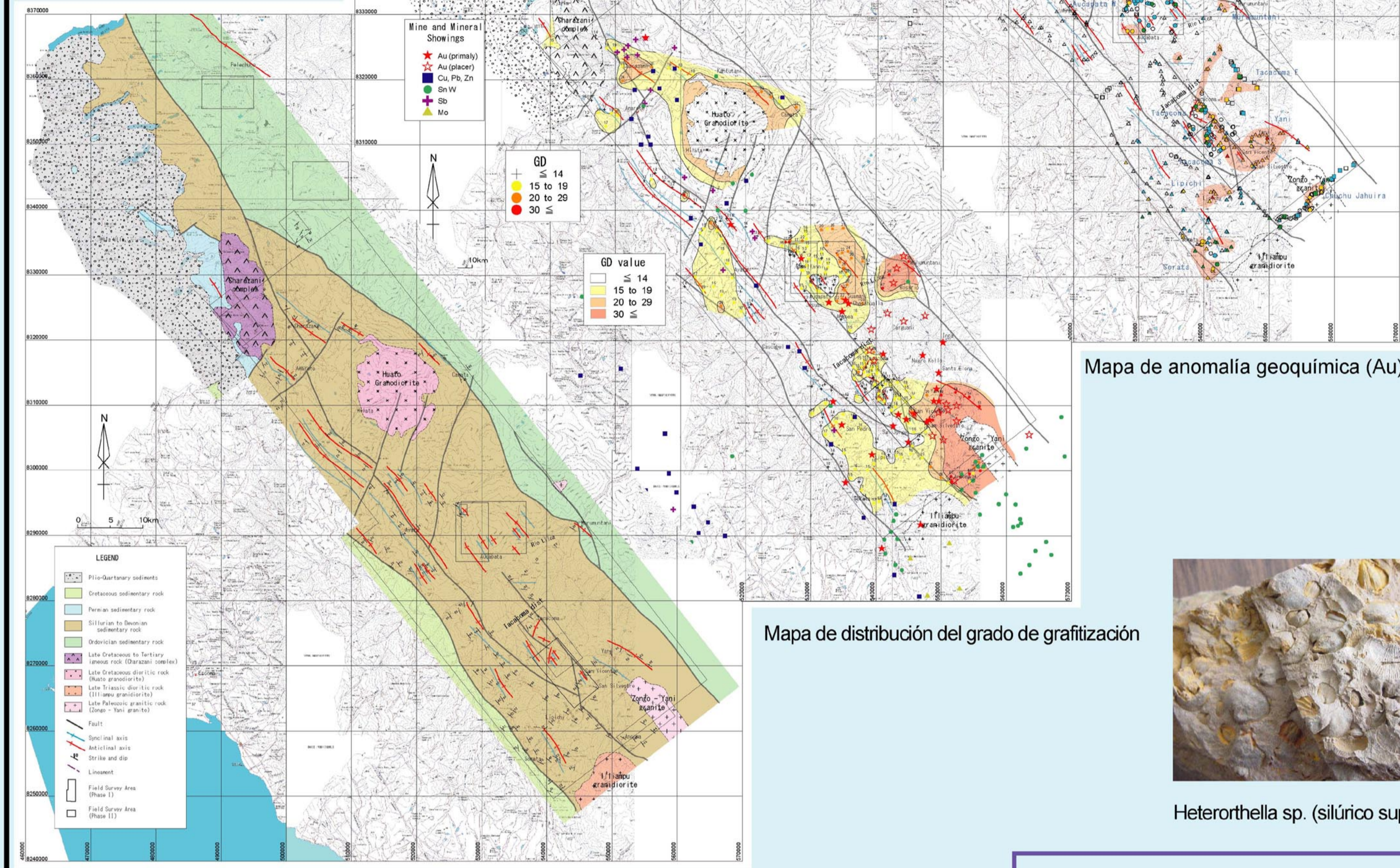
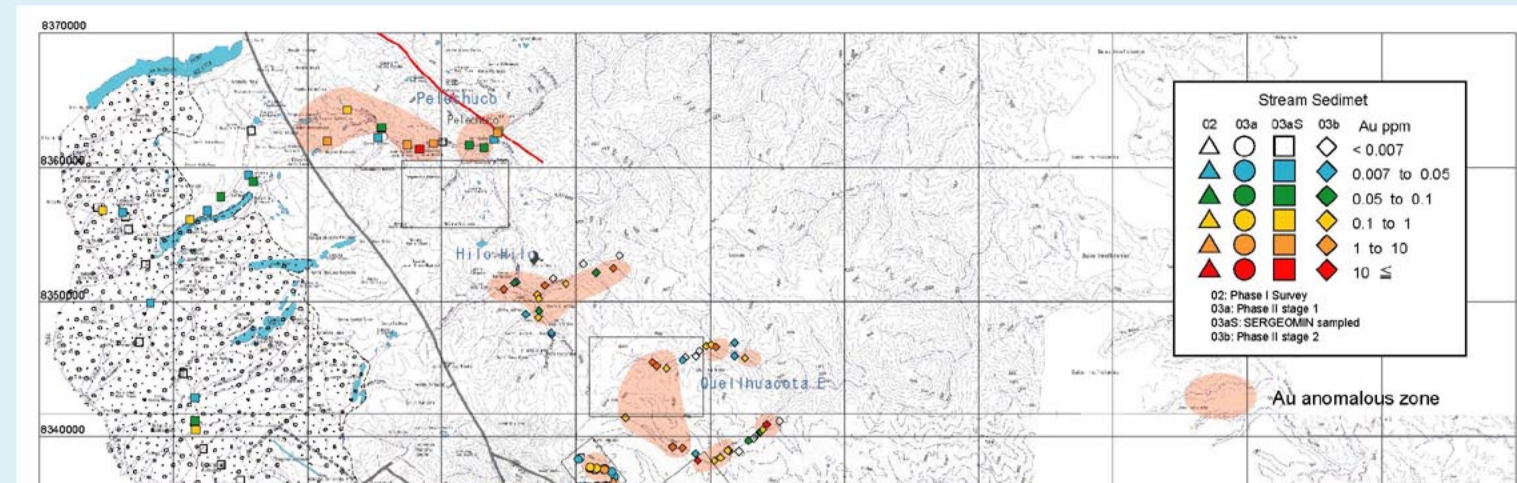
AREA DE YANI-PELECHUCO

REPUBLICA DE BOLIVIA

COOPERACION EN EXPLORACION MINERA

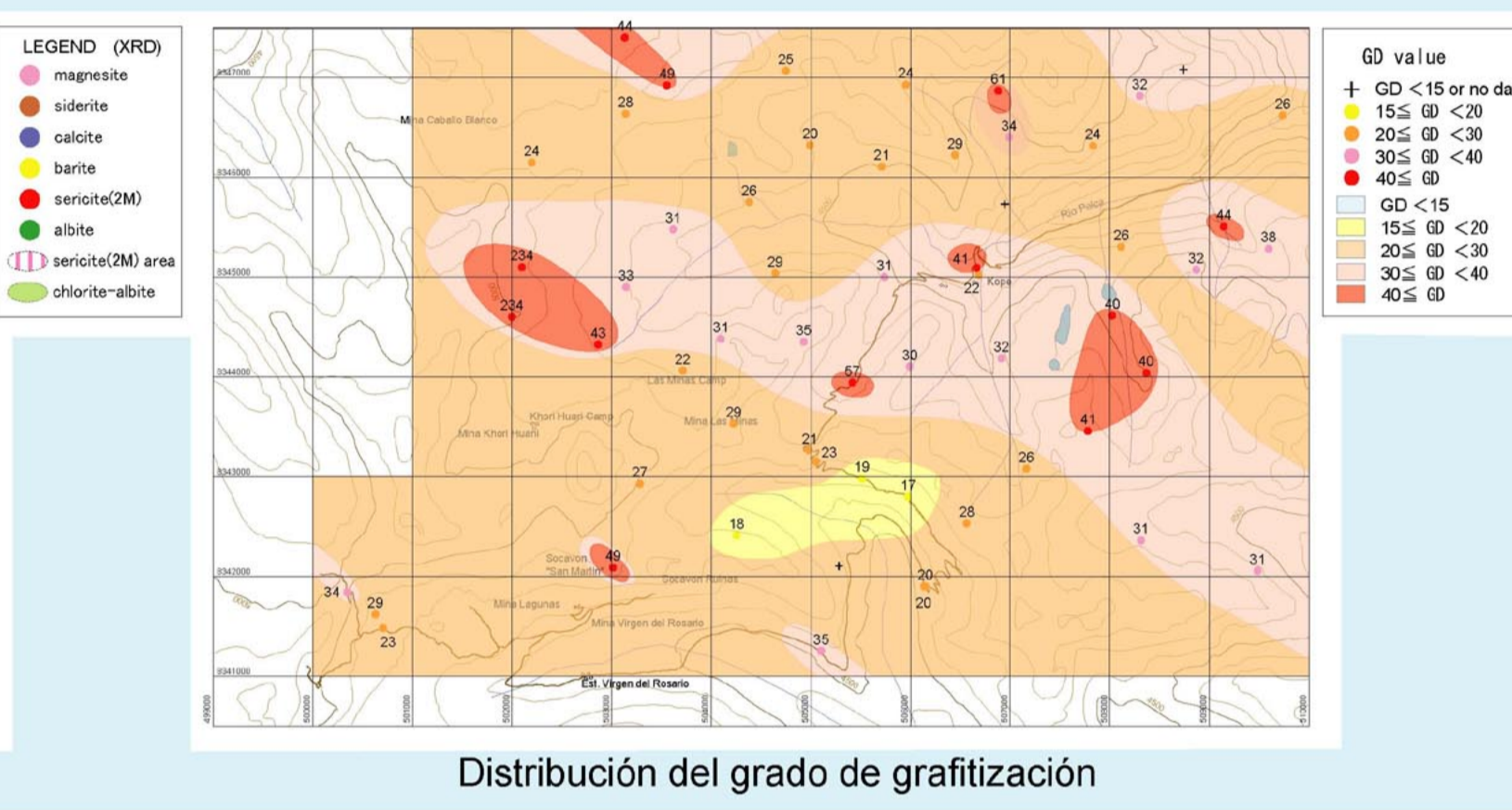
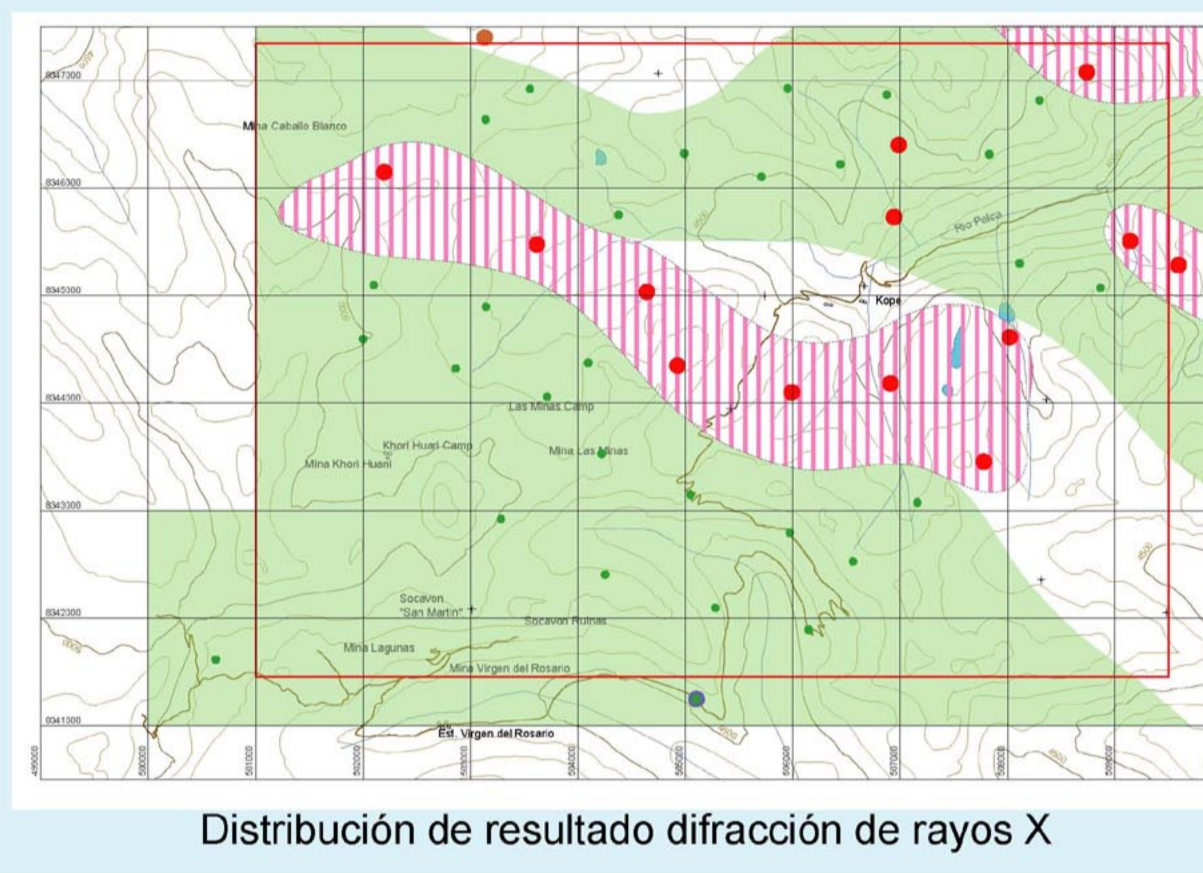
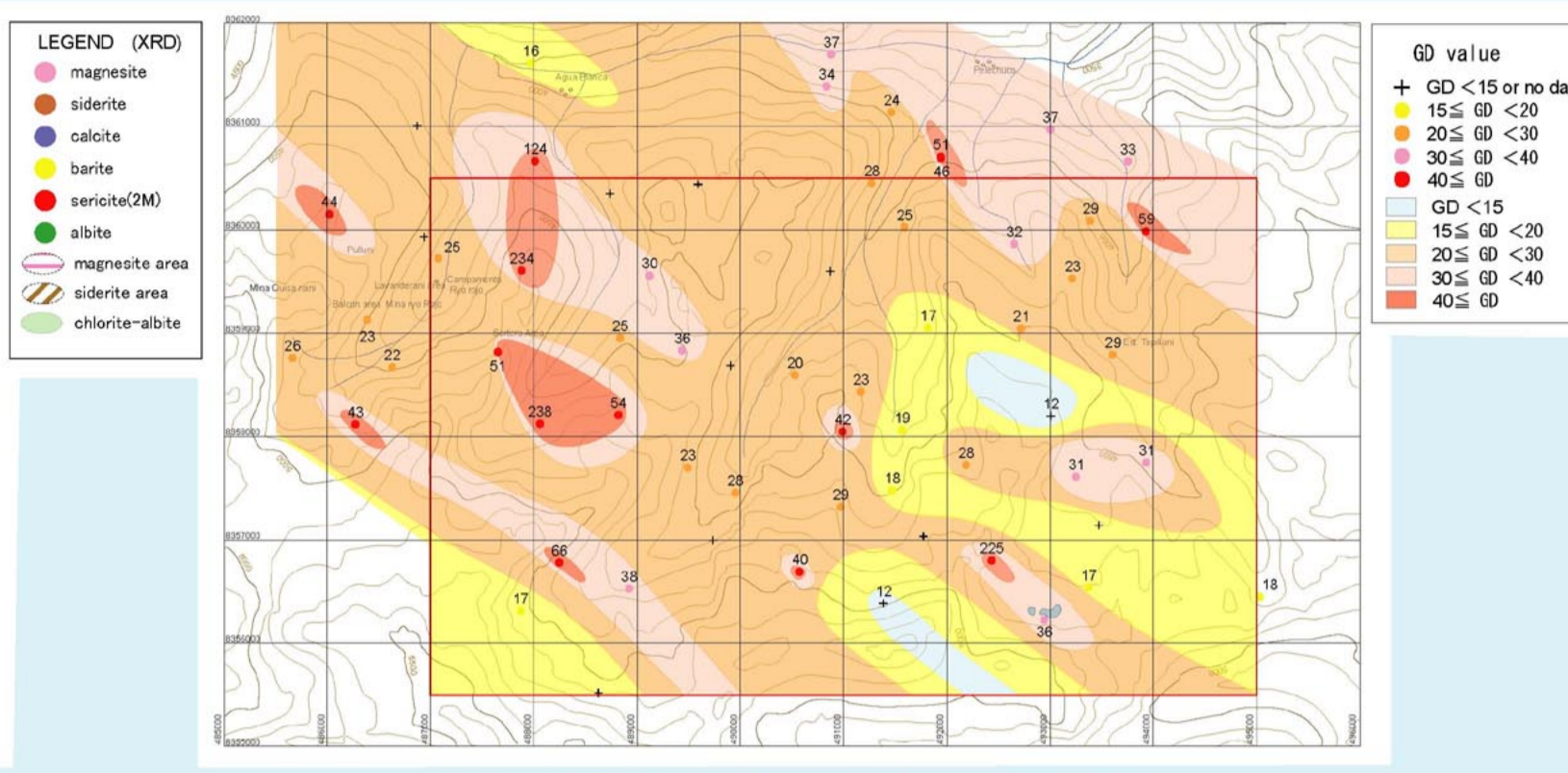
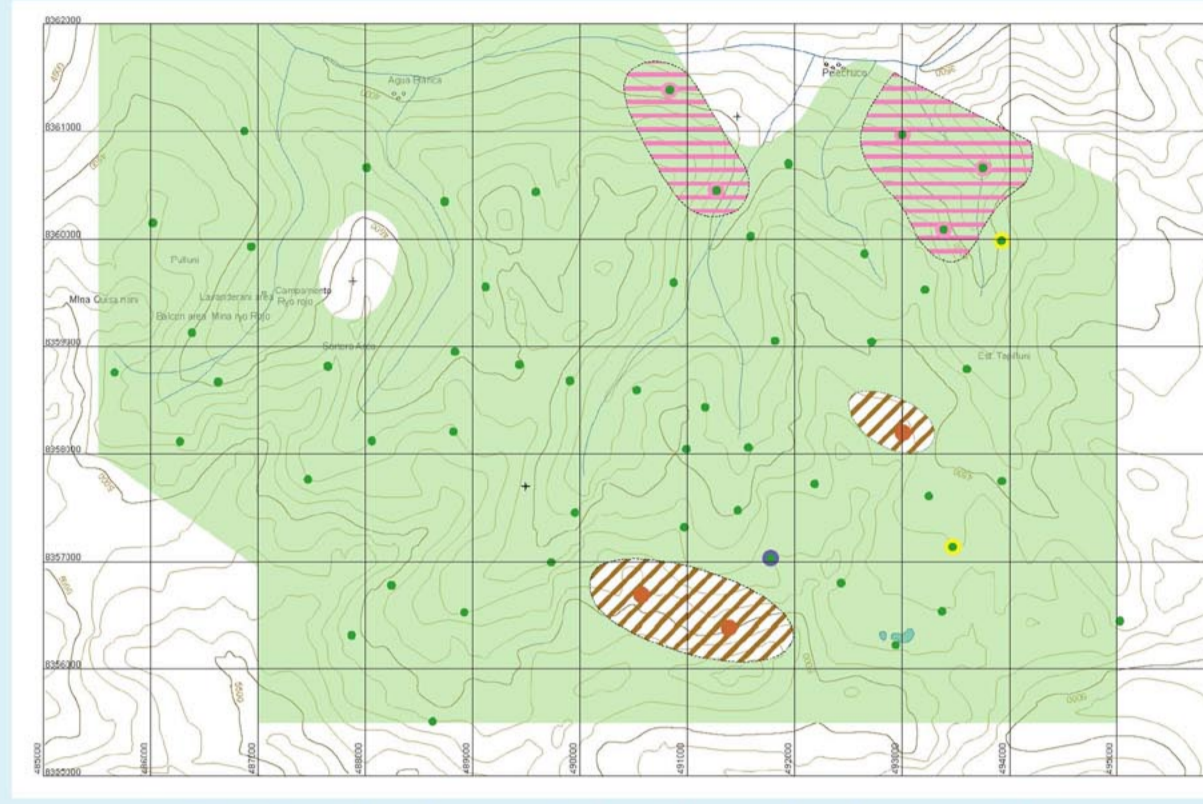
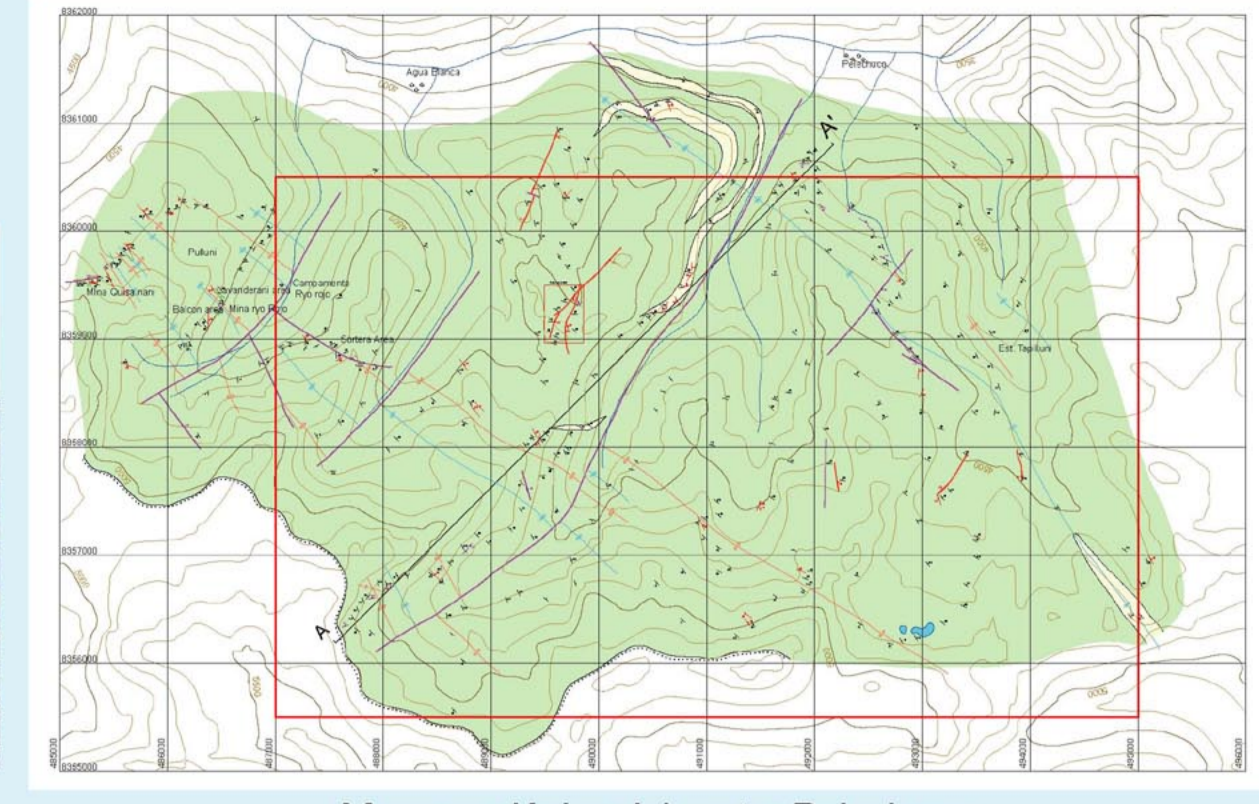
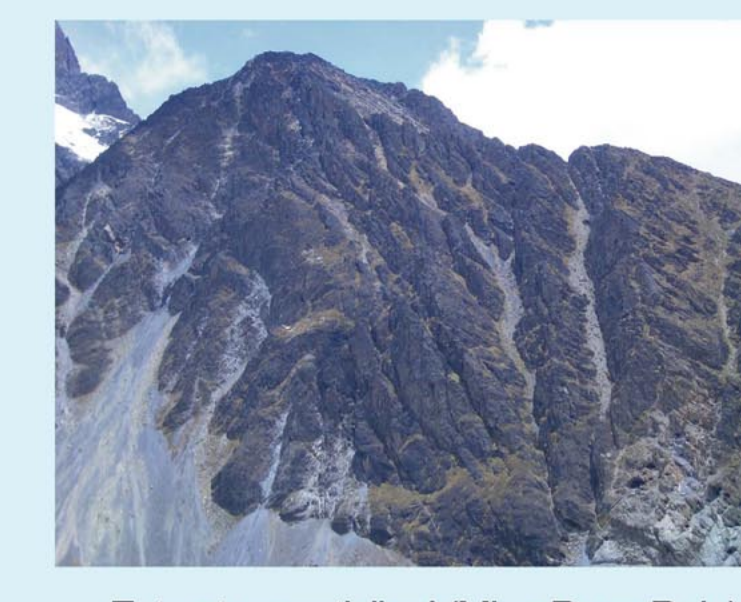
JICA/JOGMEC-SERGEOTECMIN 2002-2004

MIEMBROS DEL LEVANTAMIENTO
JICA/JOGMEC(ex-SIAJ)
 (Geólogo): Hiroshi Bana, Eitaro Sato, Jun'ichi Ishikawa, Yutaka Katsumo, Akira Takami, Akinobu Takebe, Noboru Matsumoto, Mario Basulinato, Tasyoshi Yamada, Noboru Furukawa, Kinzo Asari
SERGEOTECMIN(ex-SERGEOMIN)
 (Geólogo): Fernando Berrillo, Pedro Rivero, Roberto Alfaro, Roberto Frigo, Juan Luis Aranda, Hector Vargas Santi, Oscar Alencas Alarcon, Bernardino Coronado, Ivar Alcocer Rodriguez, John Mendez.

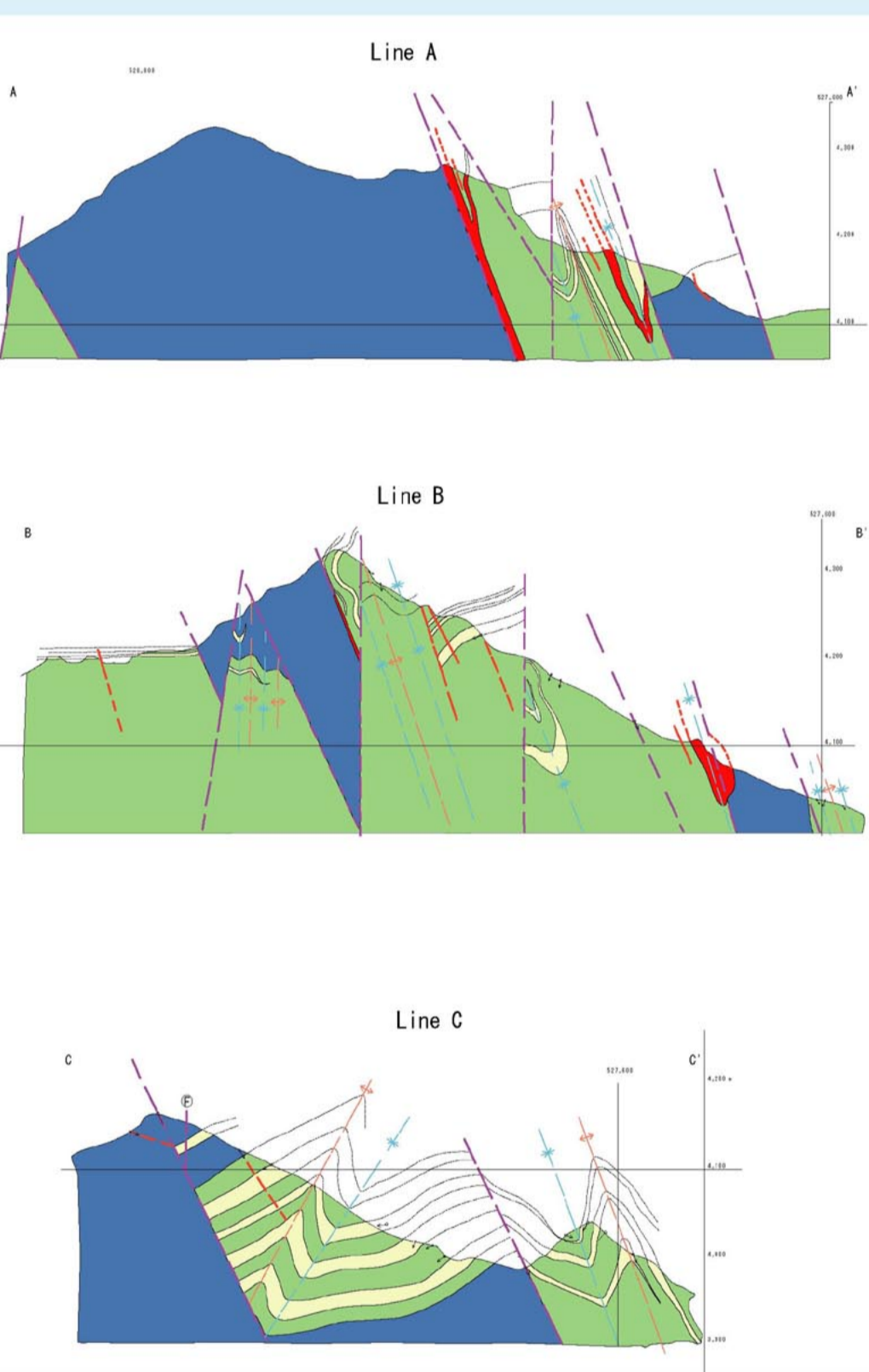
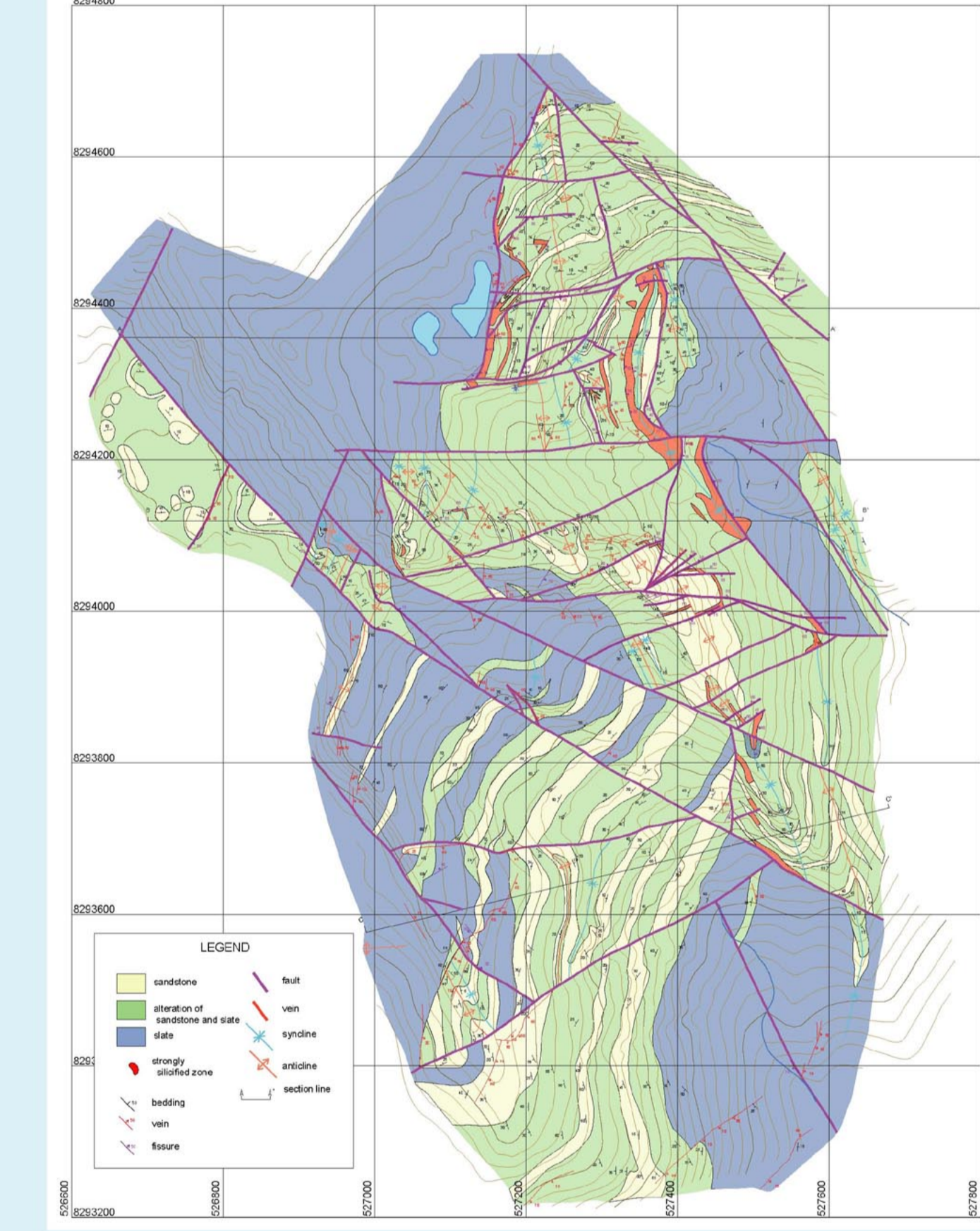
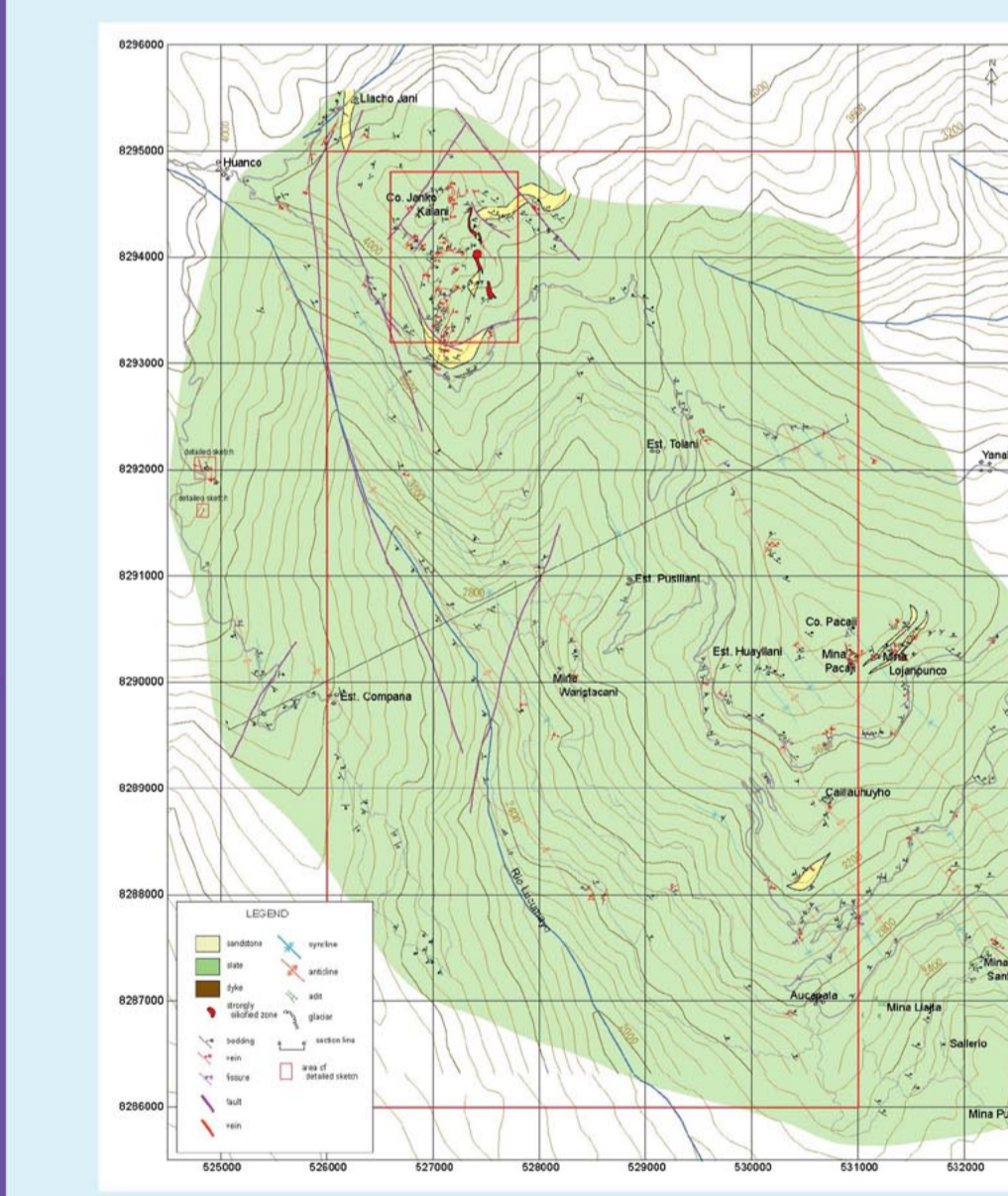


Resultado de medición de inclusión fluida

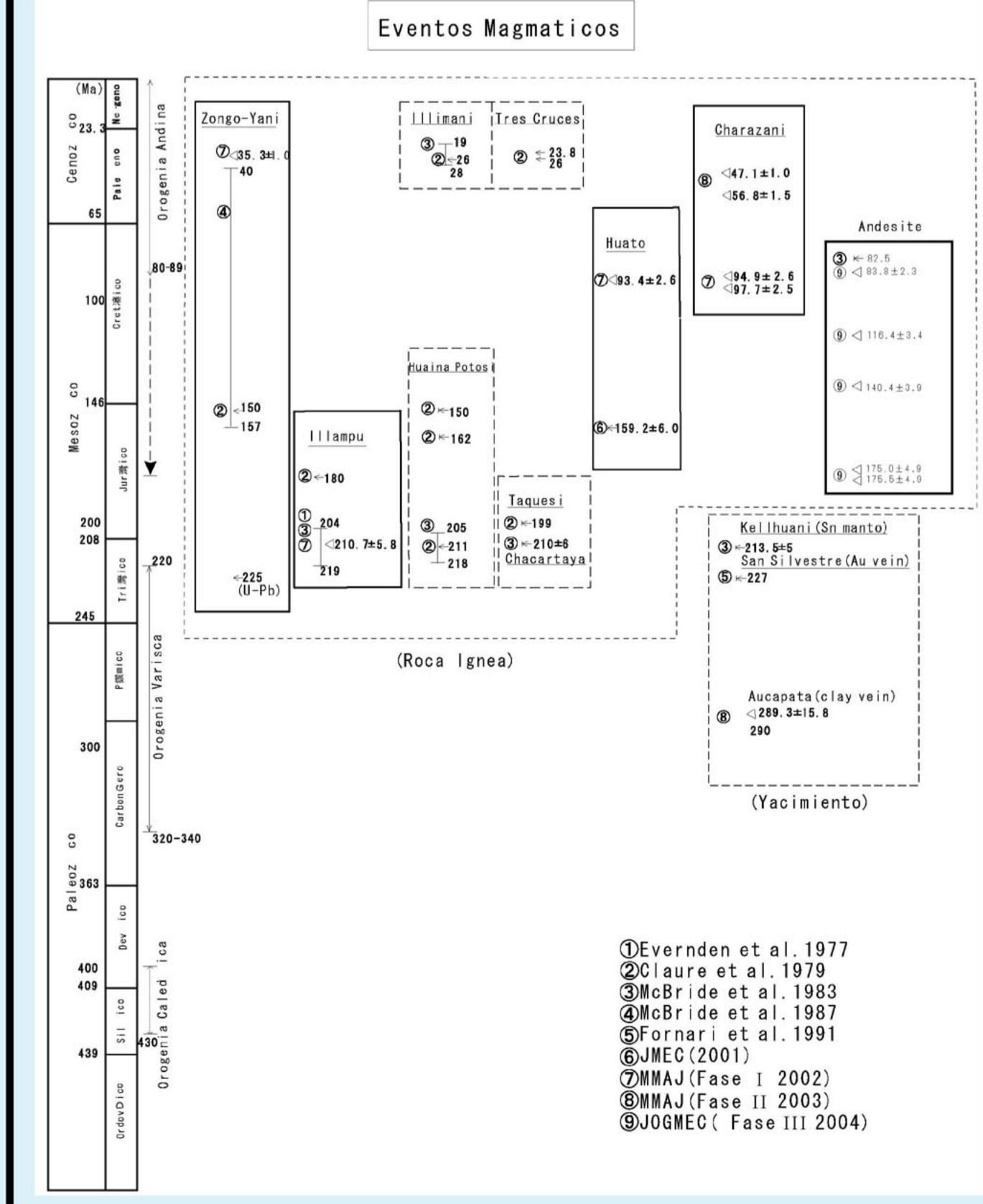
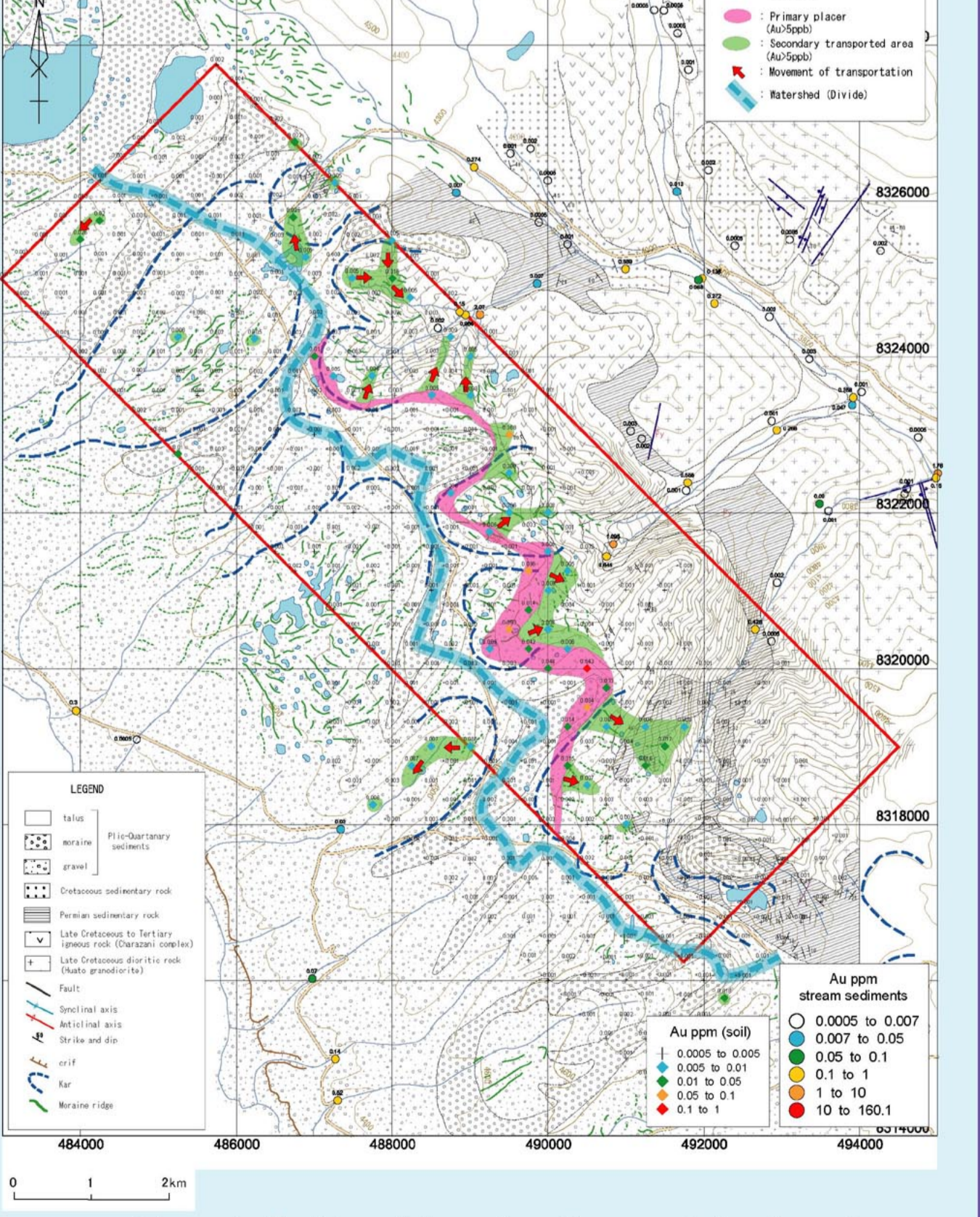
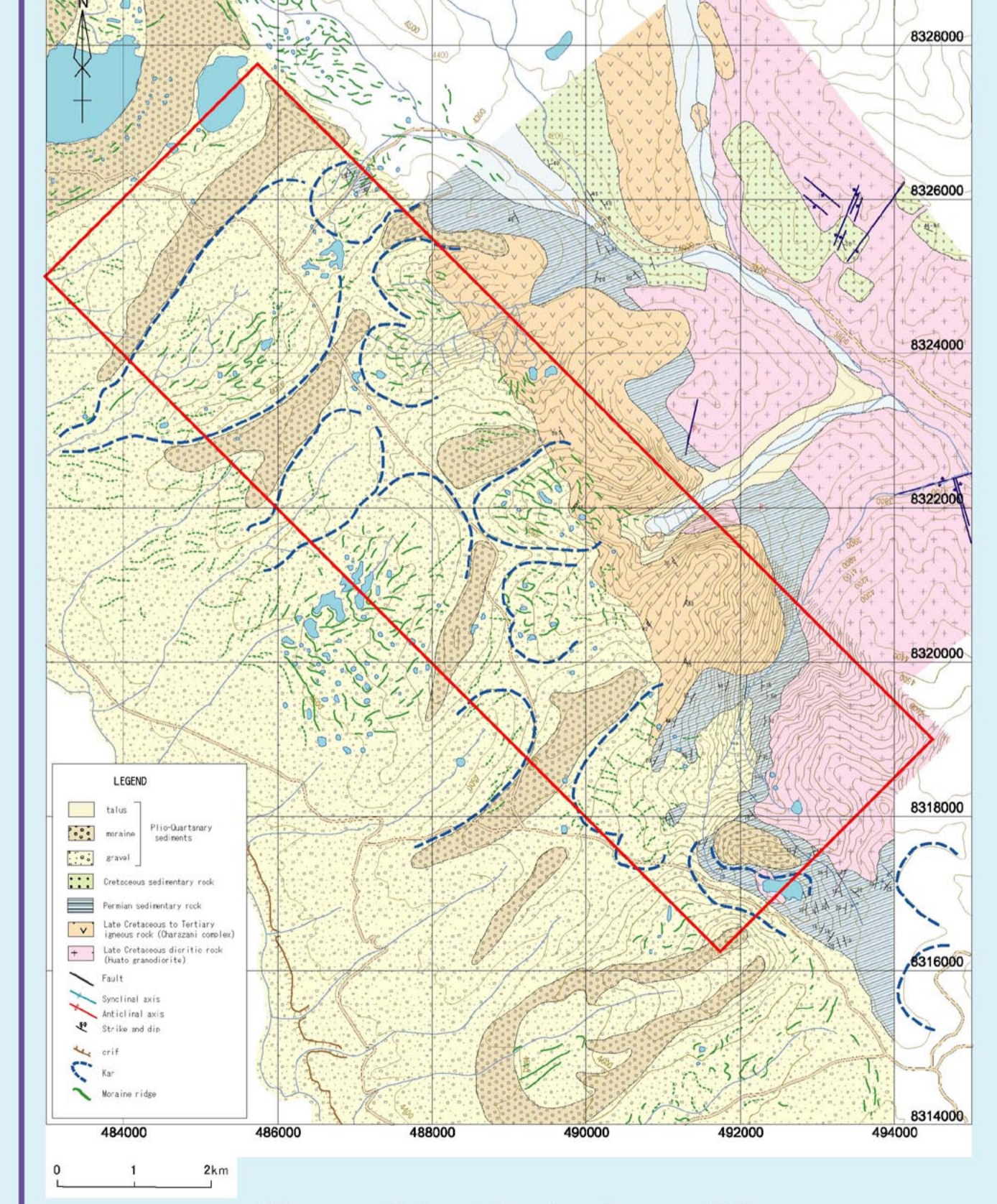
Sector Pelechuco



Sector Aucapata



Sector Charazani W



Periodos de la actividad magmática, mineralización y alteración

Sector Tacacoma

