

GEOLOGIA Y DEPOSITOS MINERALES

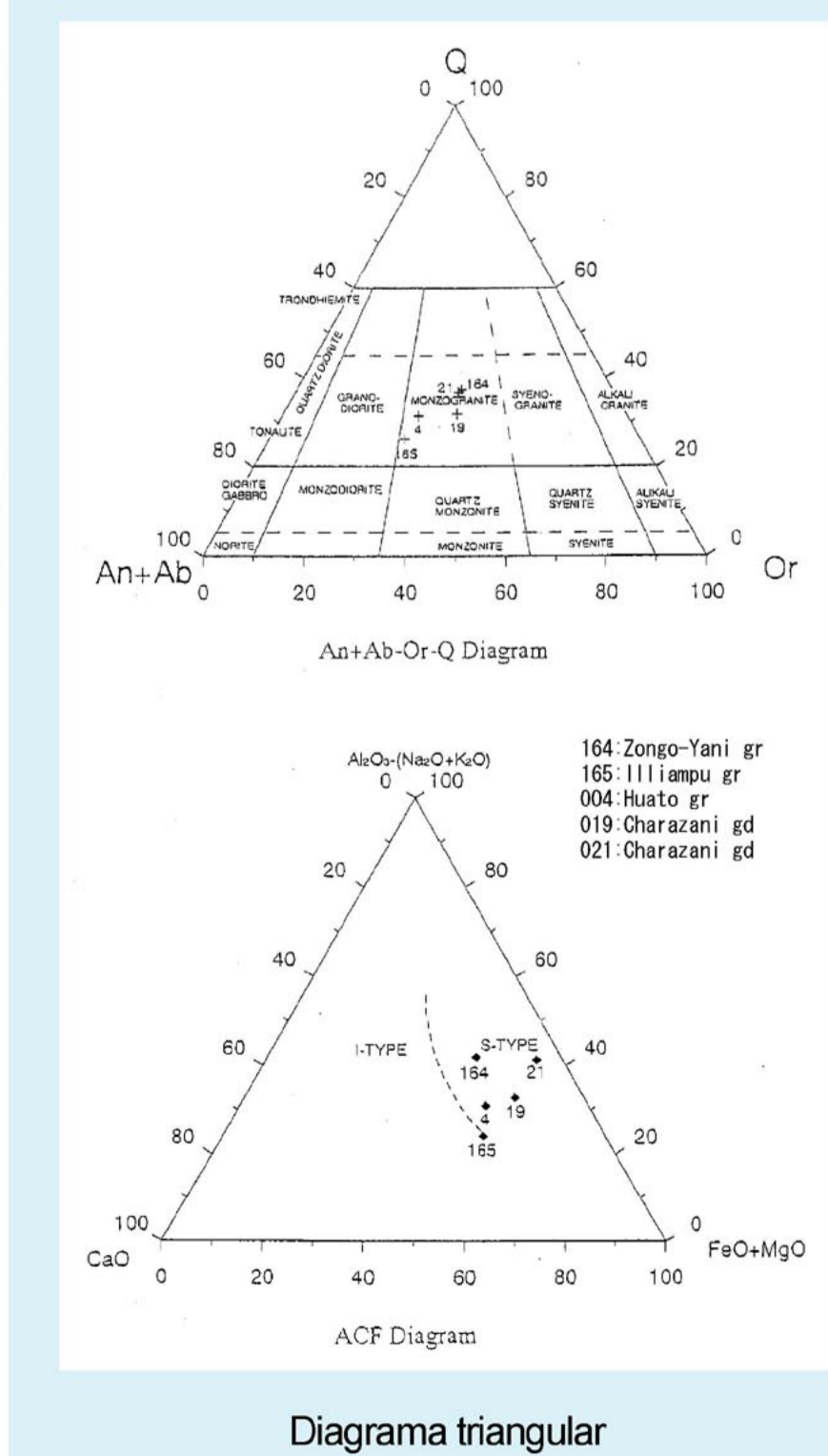
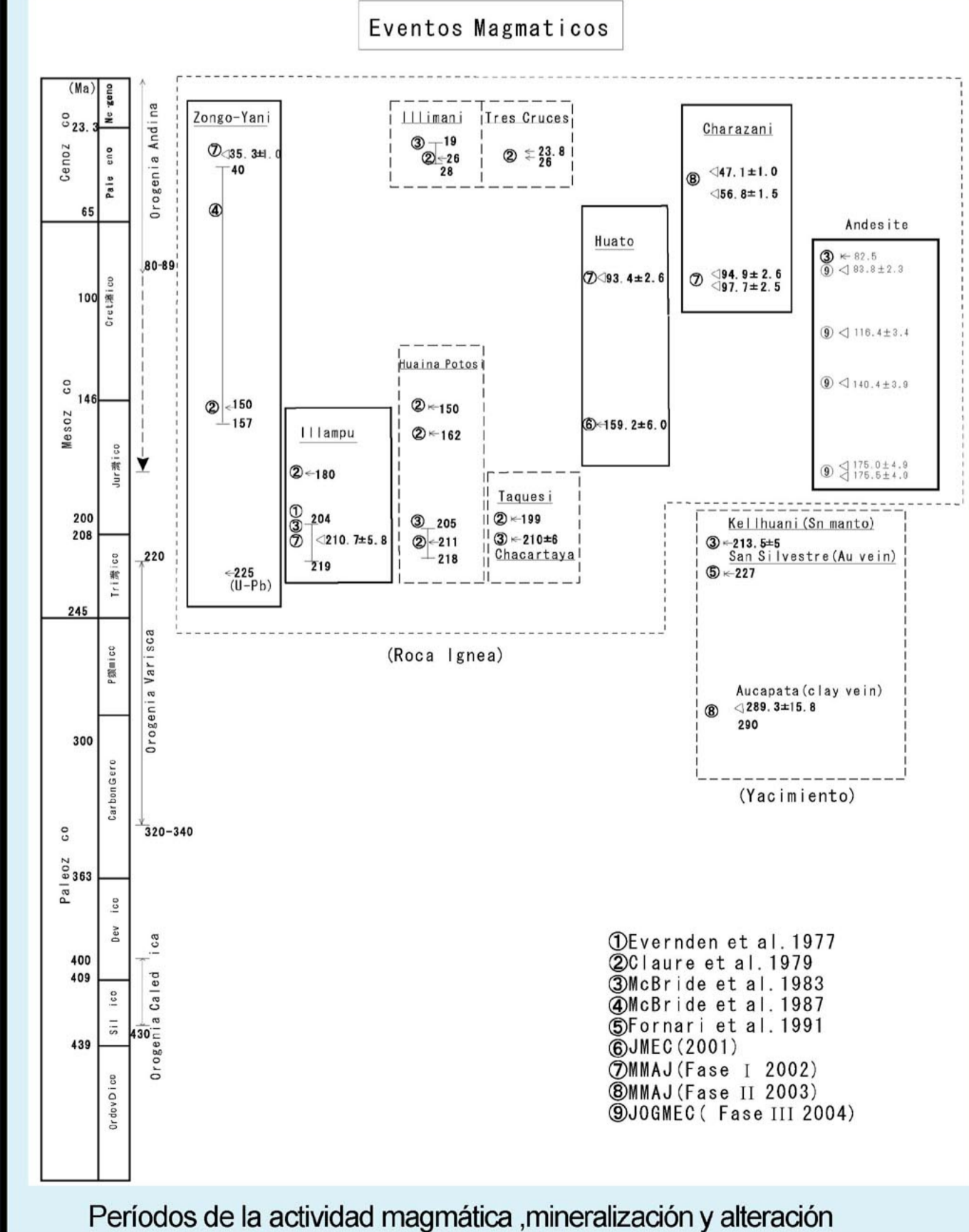
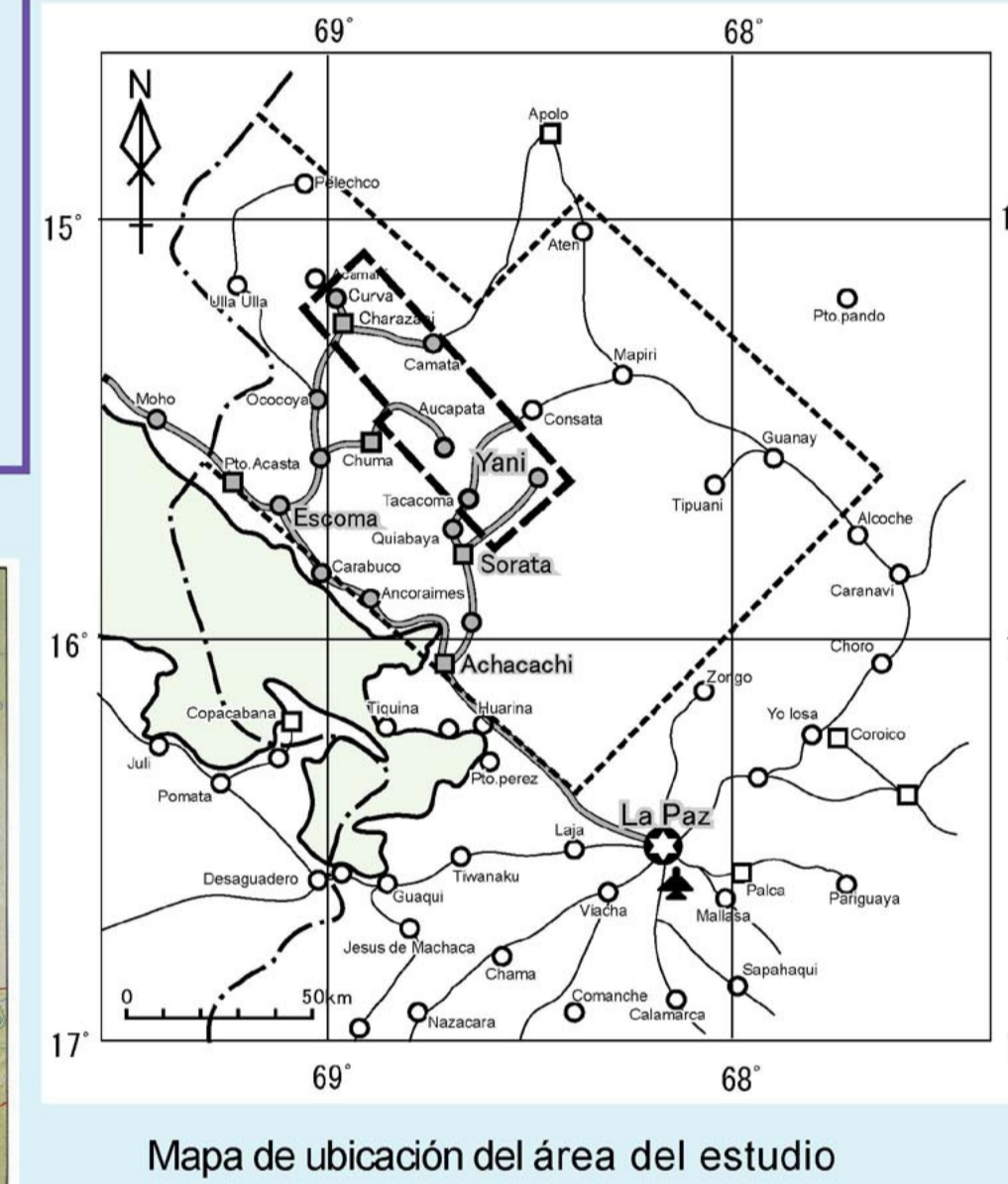
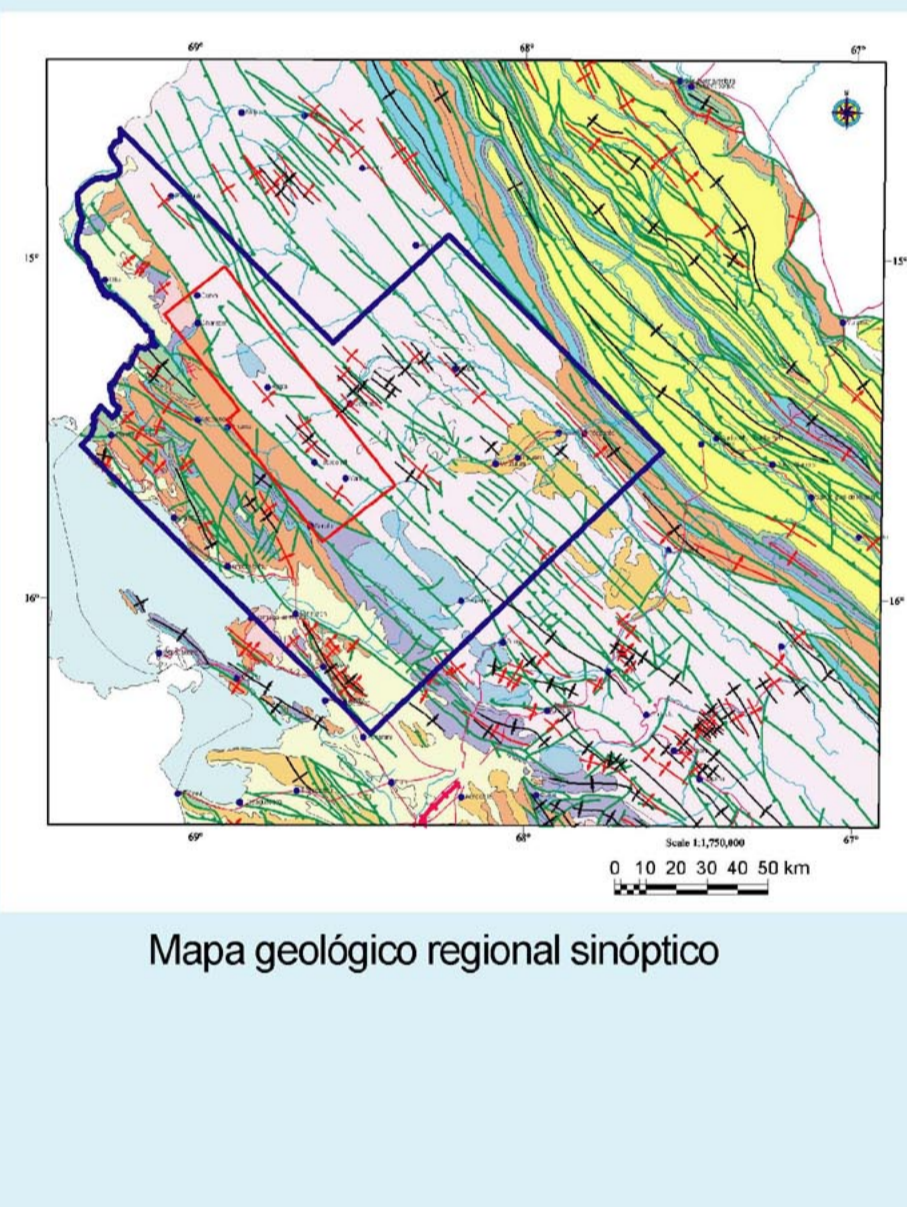
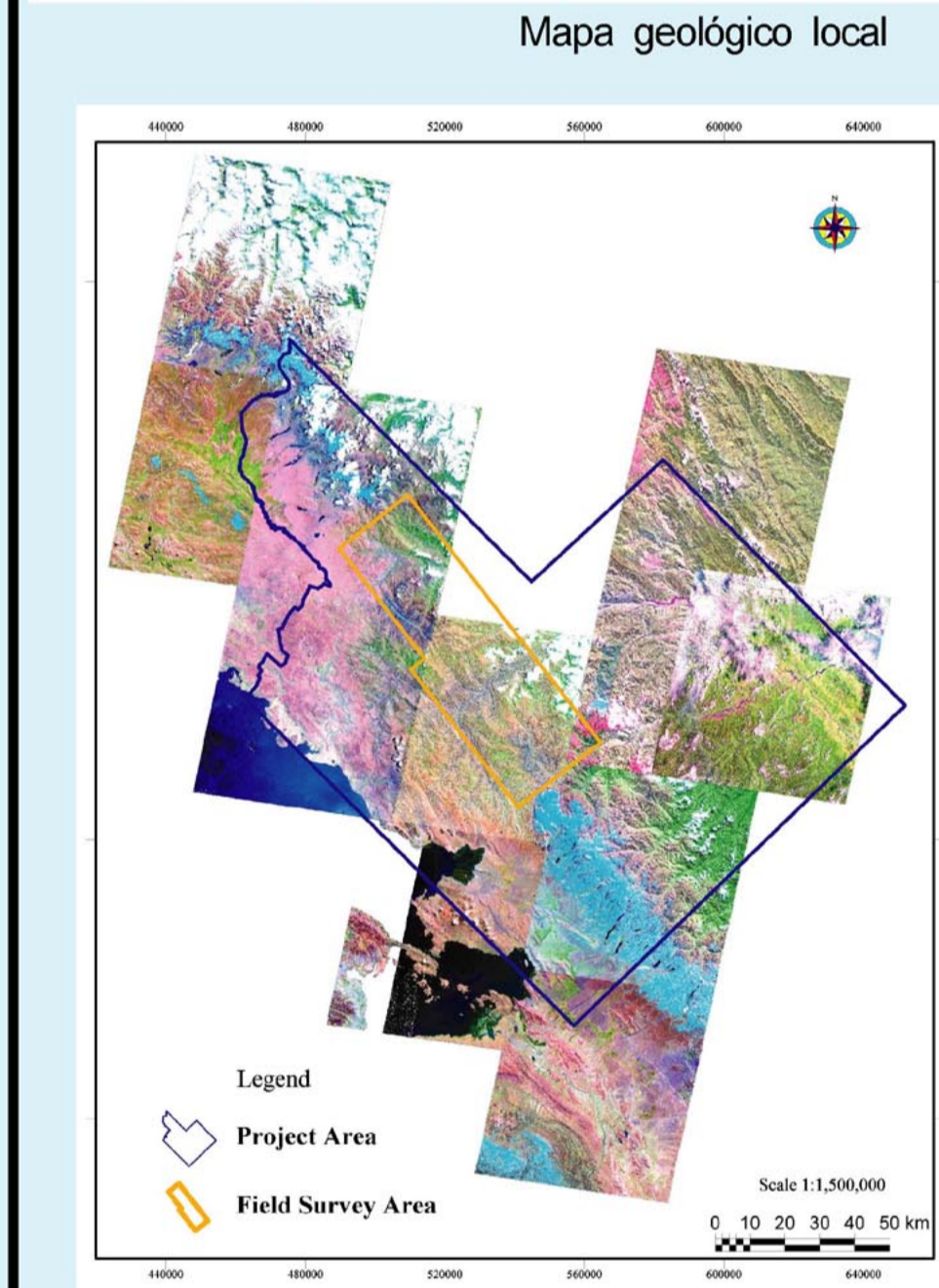
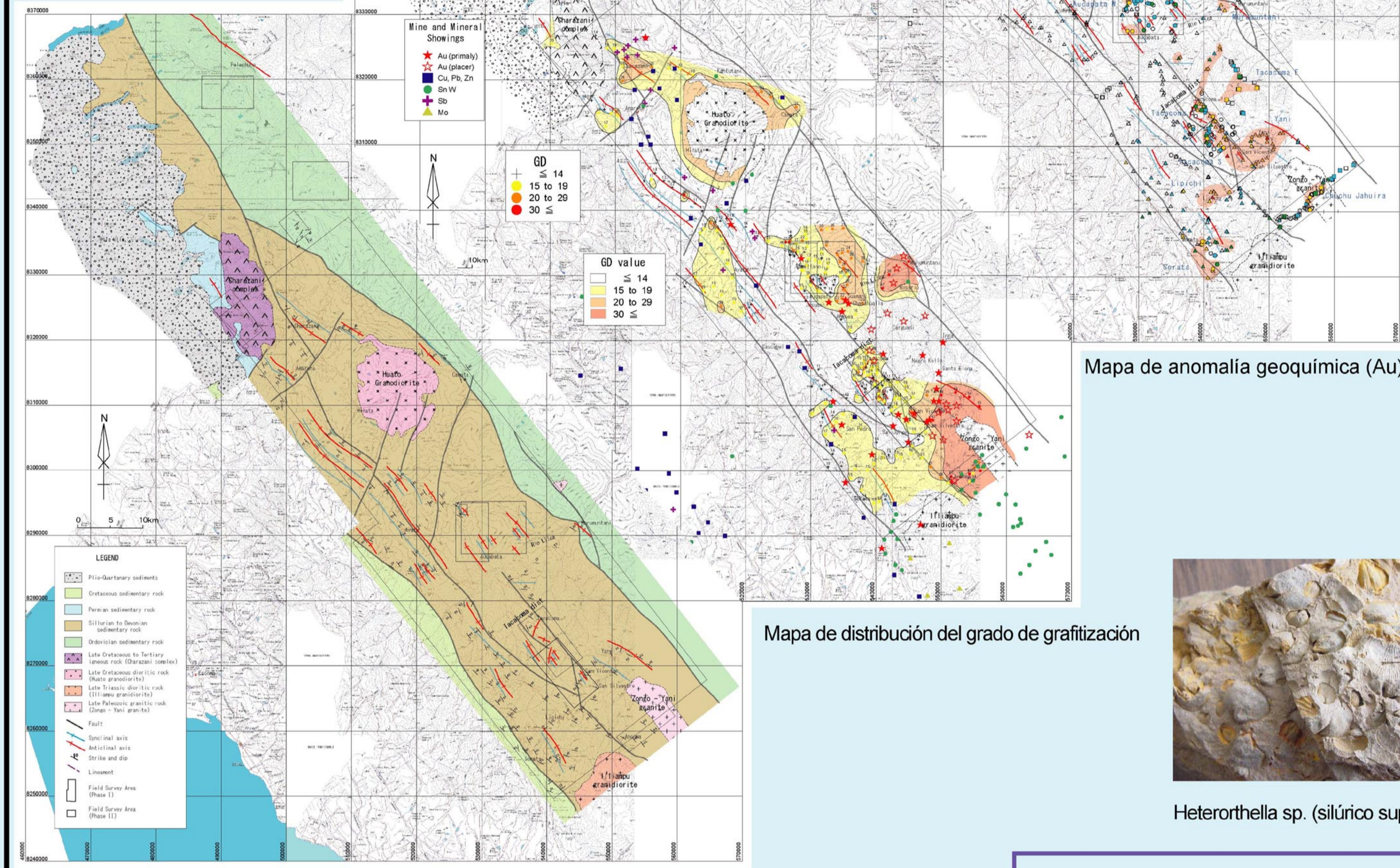
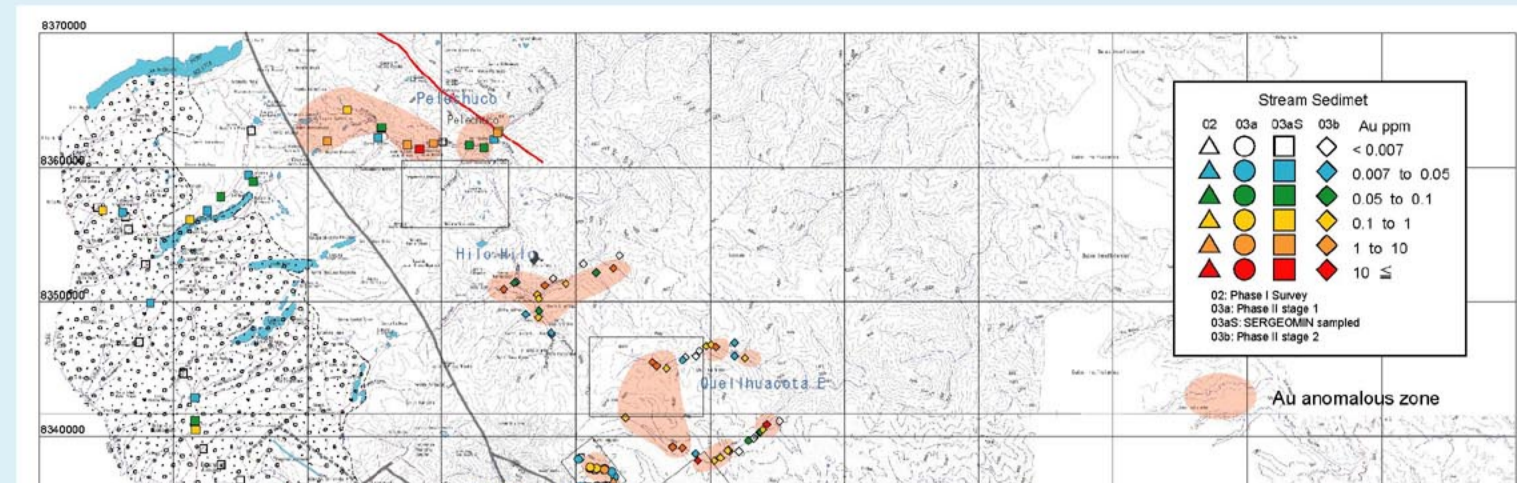
AREA DE YANI-PELECHUCO

REPUBLICA DE BOLIVIA

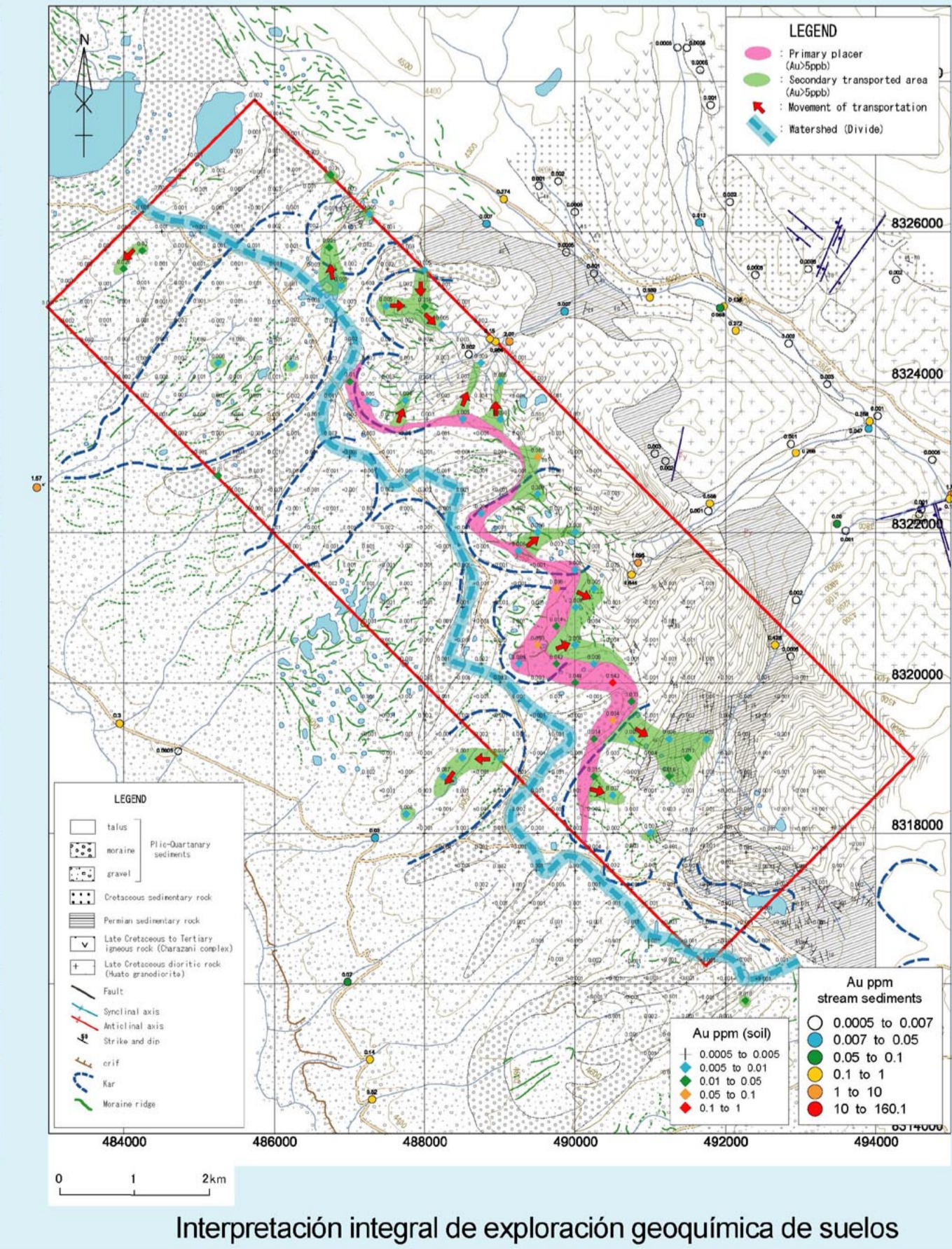
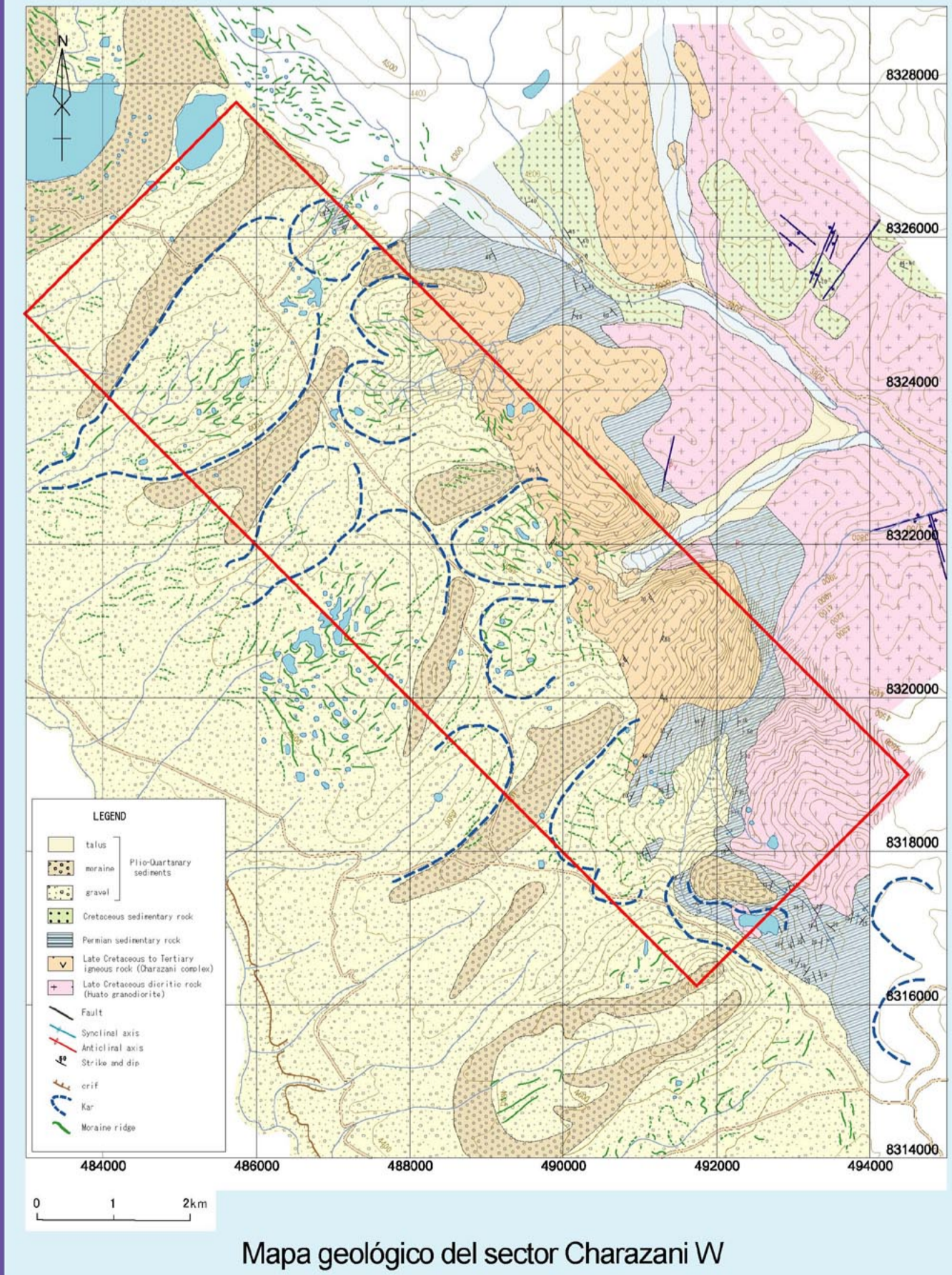
COOPERACION EN EXPLORACION MINERA

JICA/JOGMEC-SERGEOTECMIN 2002-2004

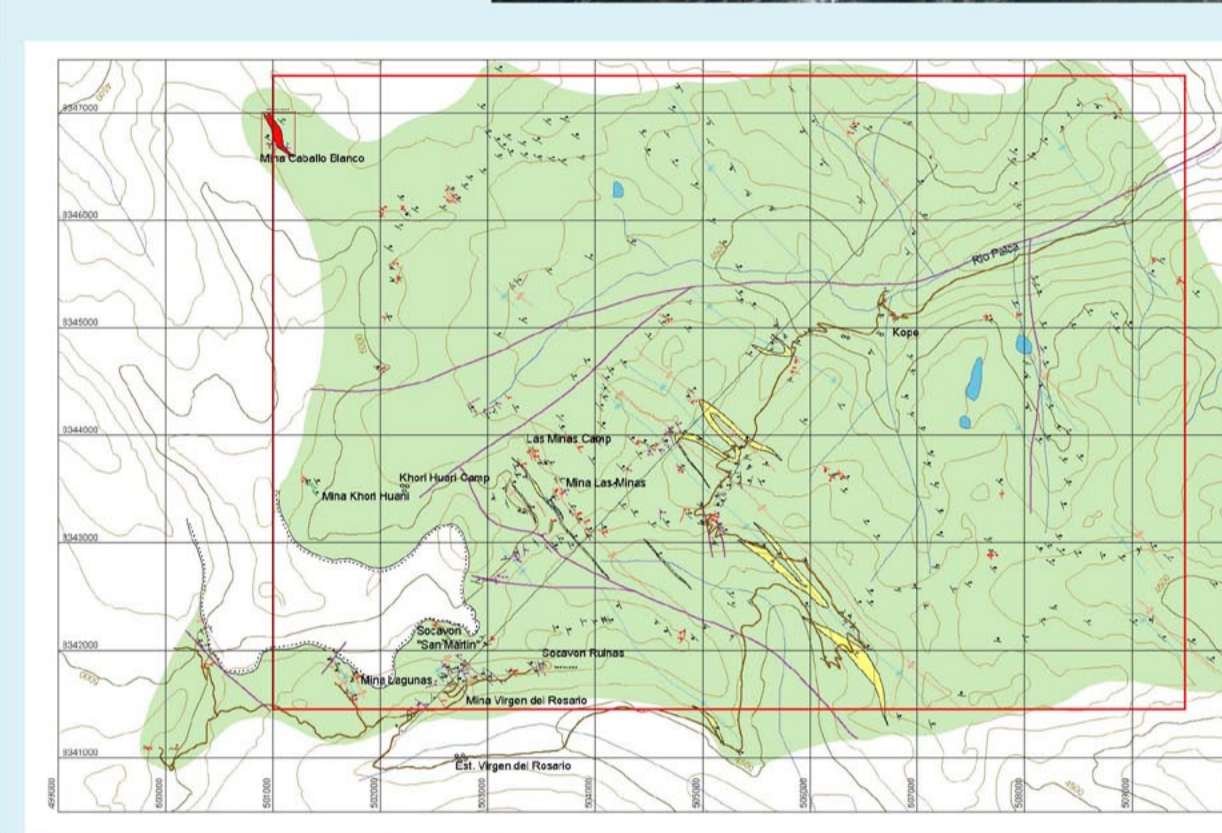
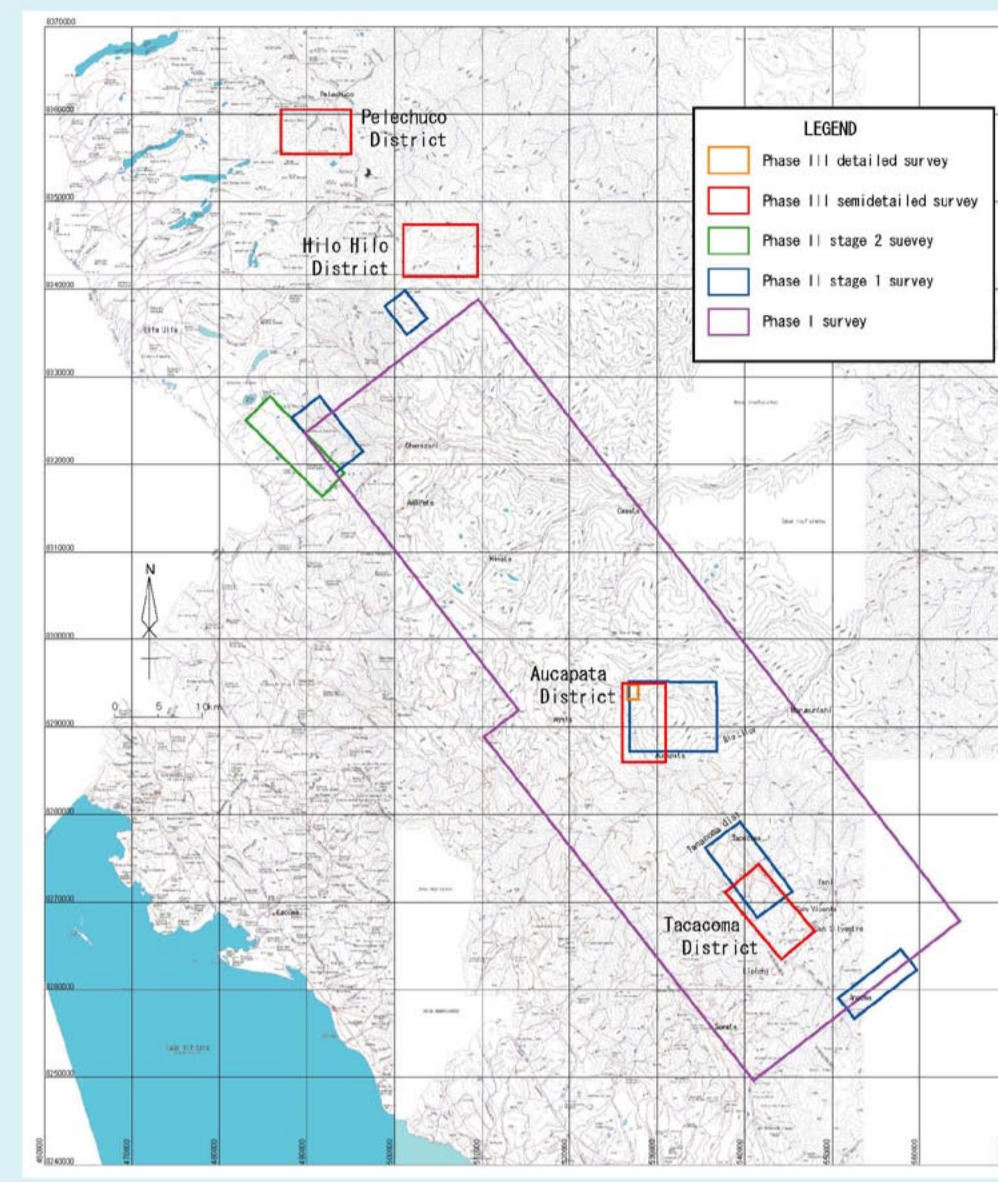
MIEMBROS DEL LEVANTAMIENTO
JICA/JOGMEC(ex-SIAJ)
 (Geólogo): Hiroshi Bana, Eitaro Sato, Jun'ichi Ishikawa, Yutaka Katsumo, Akira Takami, Akinobu Takebe, Noboru Matsumoto, Mario Basulinato, Tasyoshi Yamada, Noboru Furukawa, Kinzo Asari
SERGEOTECMIN(ex-SERGEOMIN)
 (Geólogo): Fernando Berrillo, Pedro Rivero, Roberto Alfaro, Roberto Frigo, Juan Luis Aranda, Hector Vargas Santi, Oscar Alencas Alarcon, Bernardino Coronado, Ivar Alcocer Rodriguez, John Mendez.



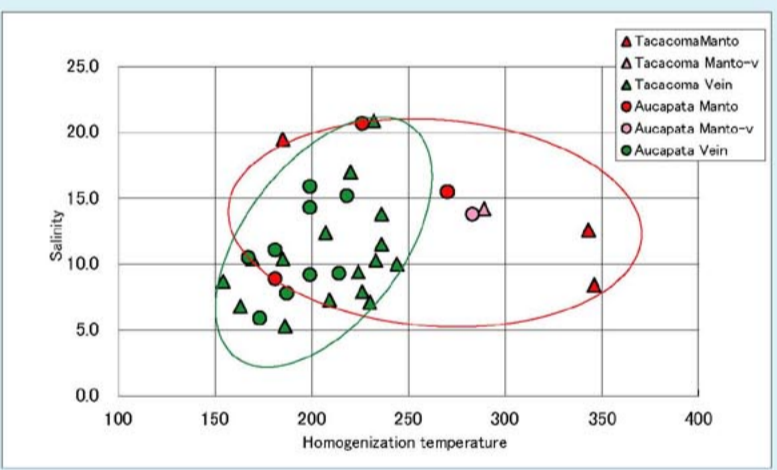
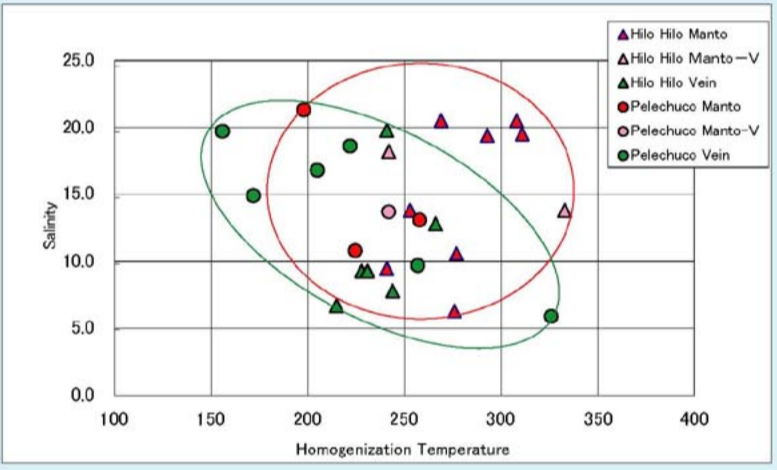
Sector Charazani W



Sector Hilo Hilo

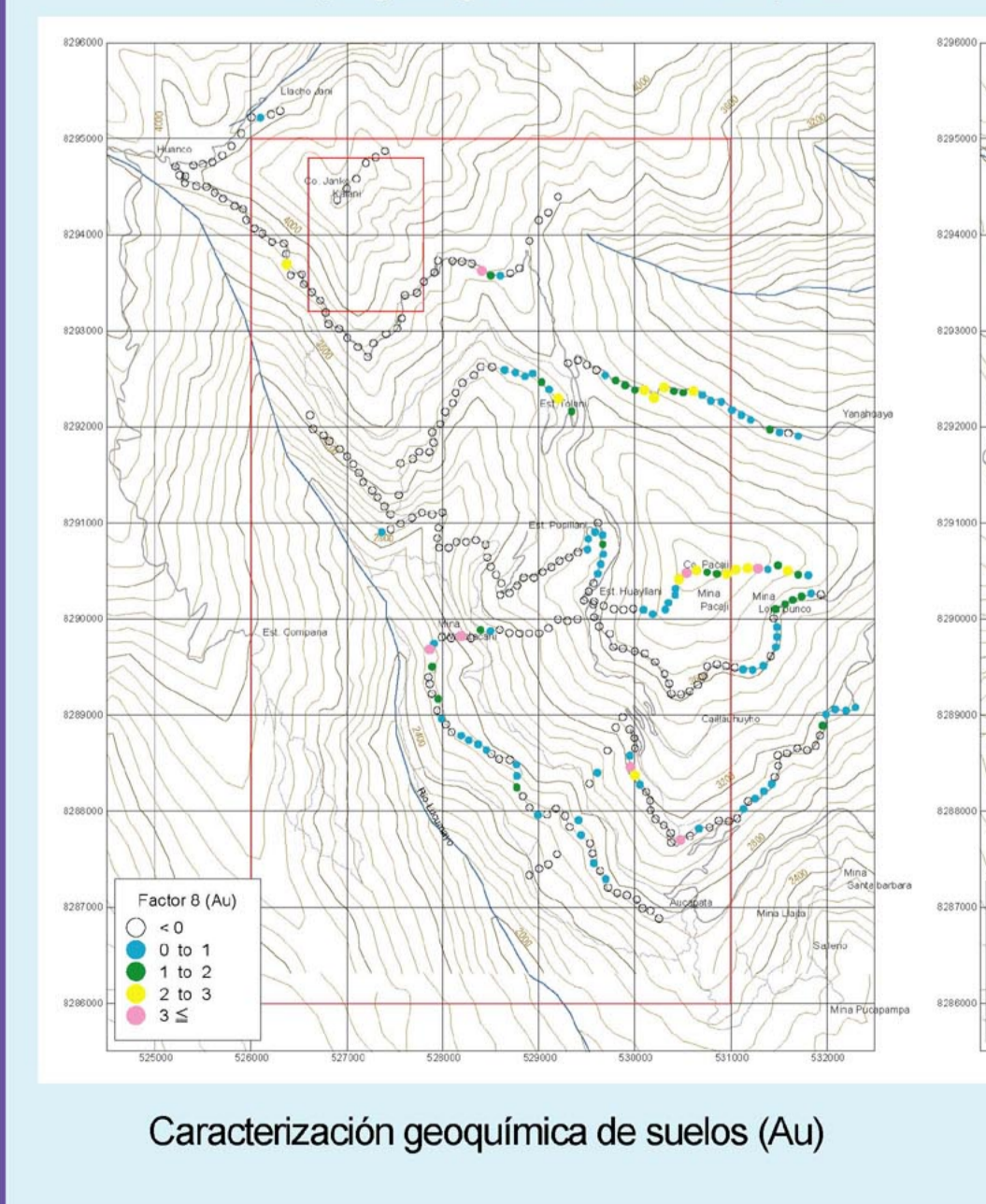
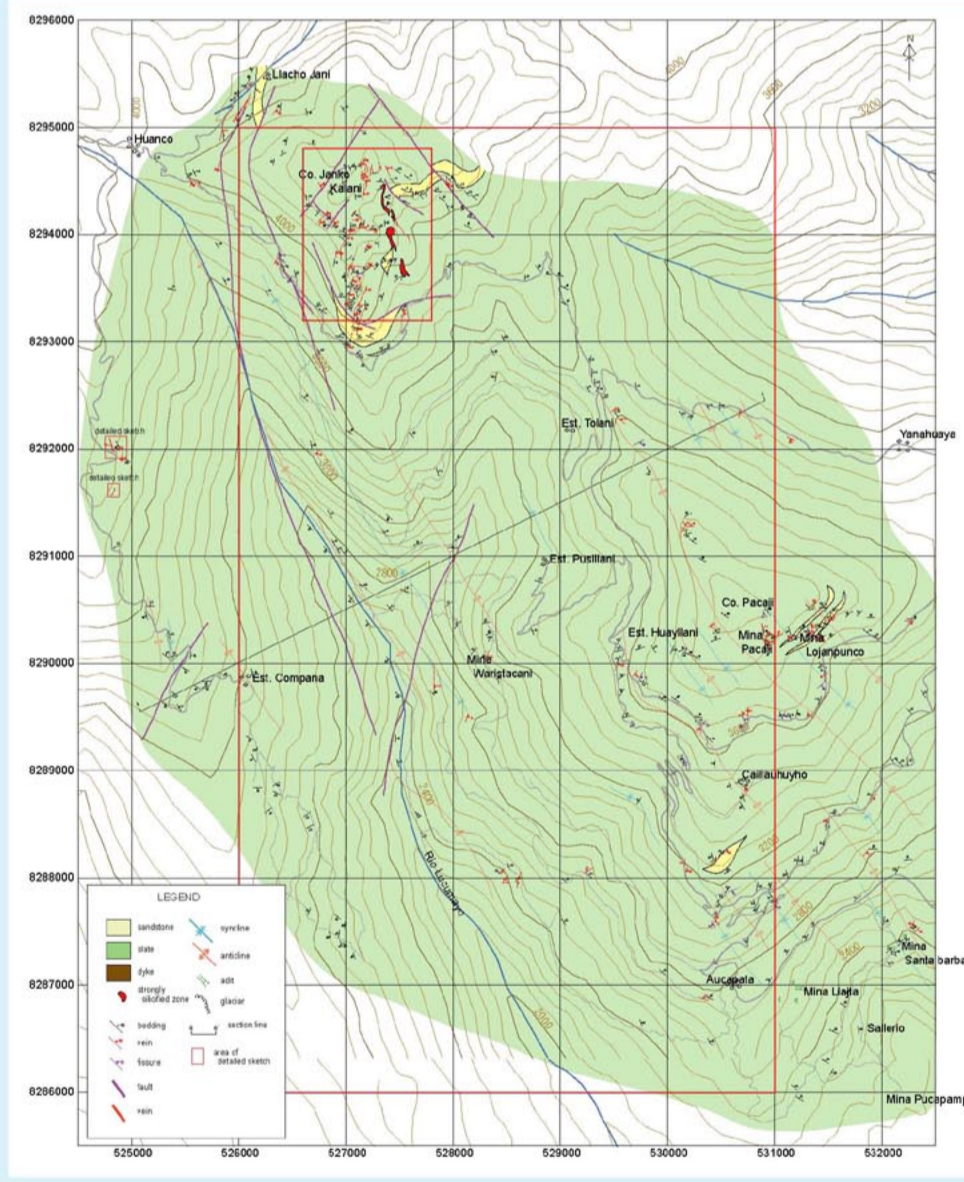


Mapa geológico del sector Hilo Hilo

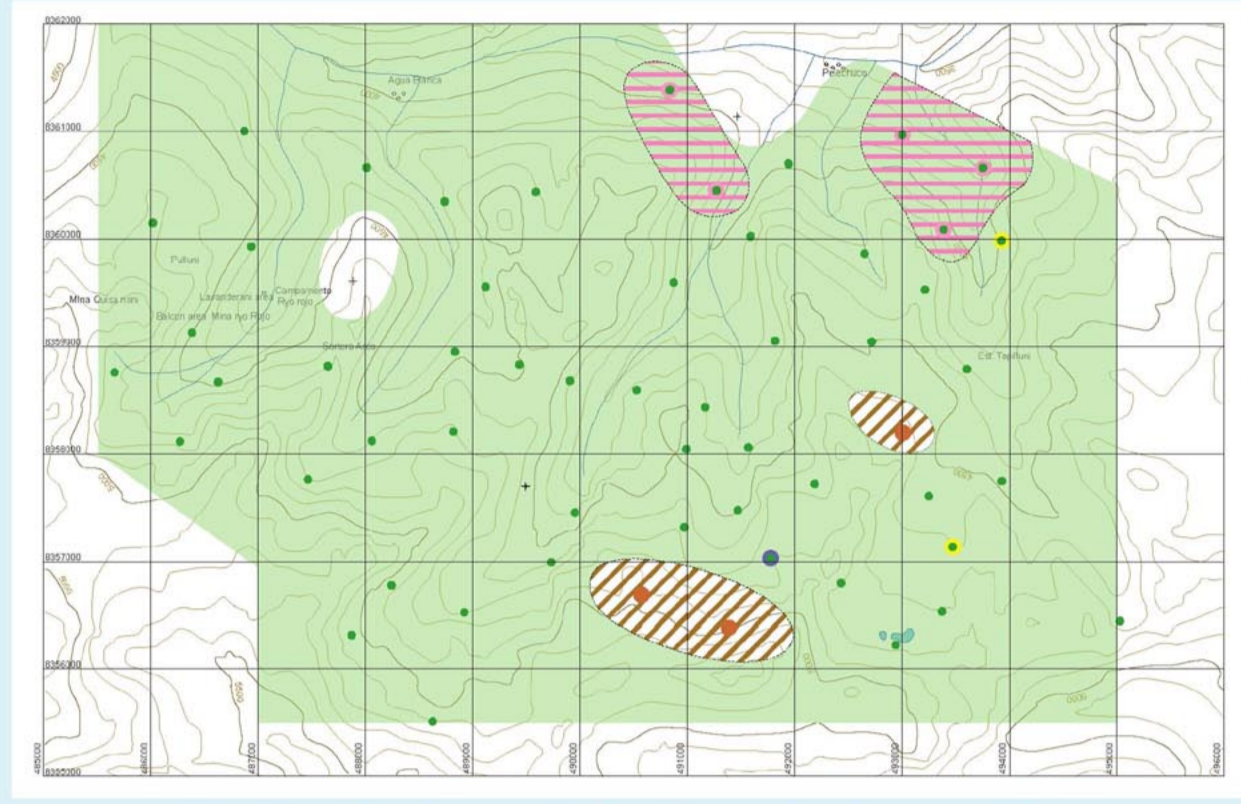
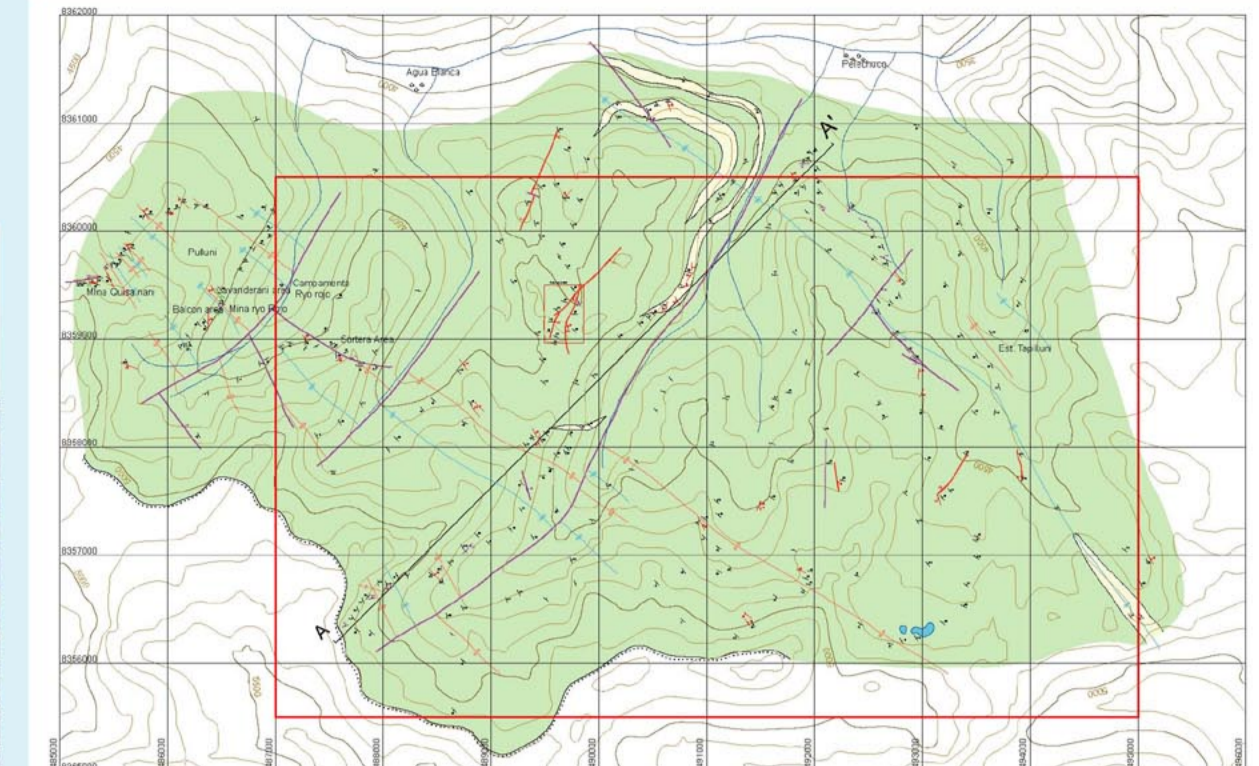
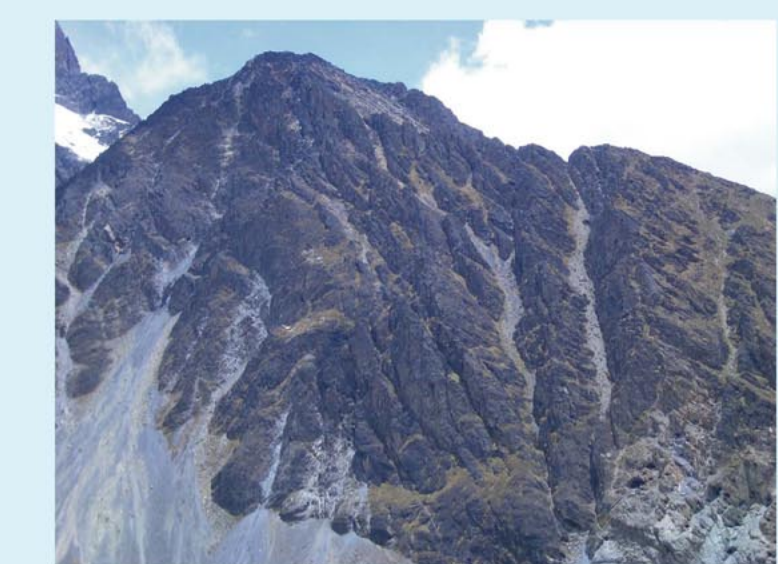


Resultado de medición de inclusión fluida

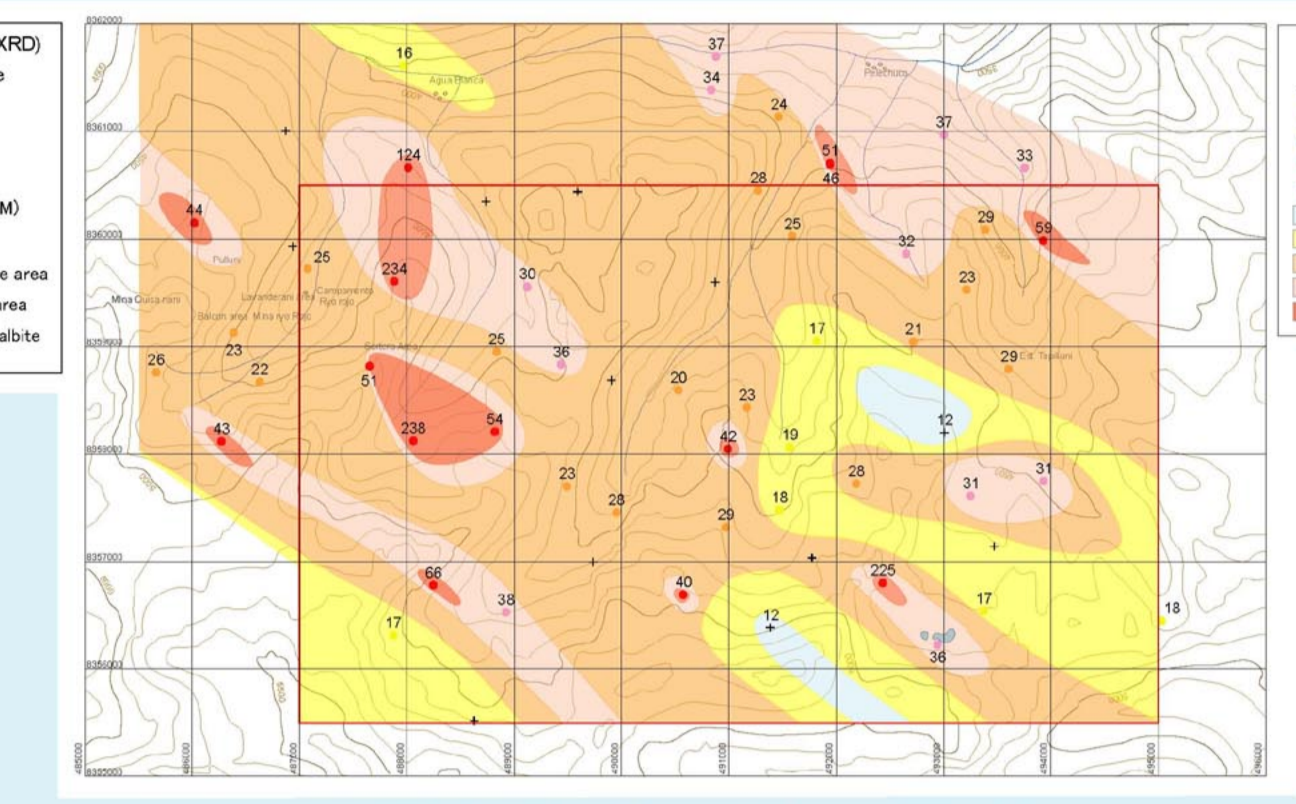
Sector Aucapata



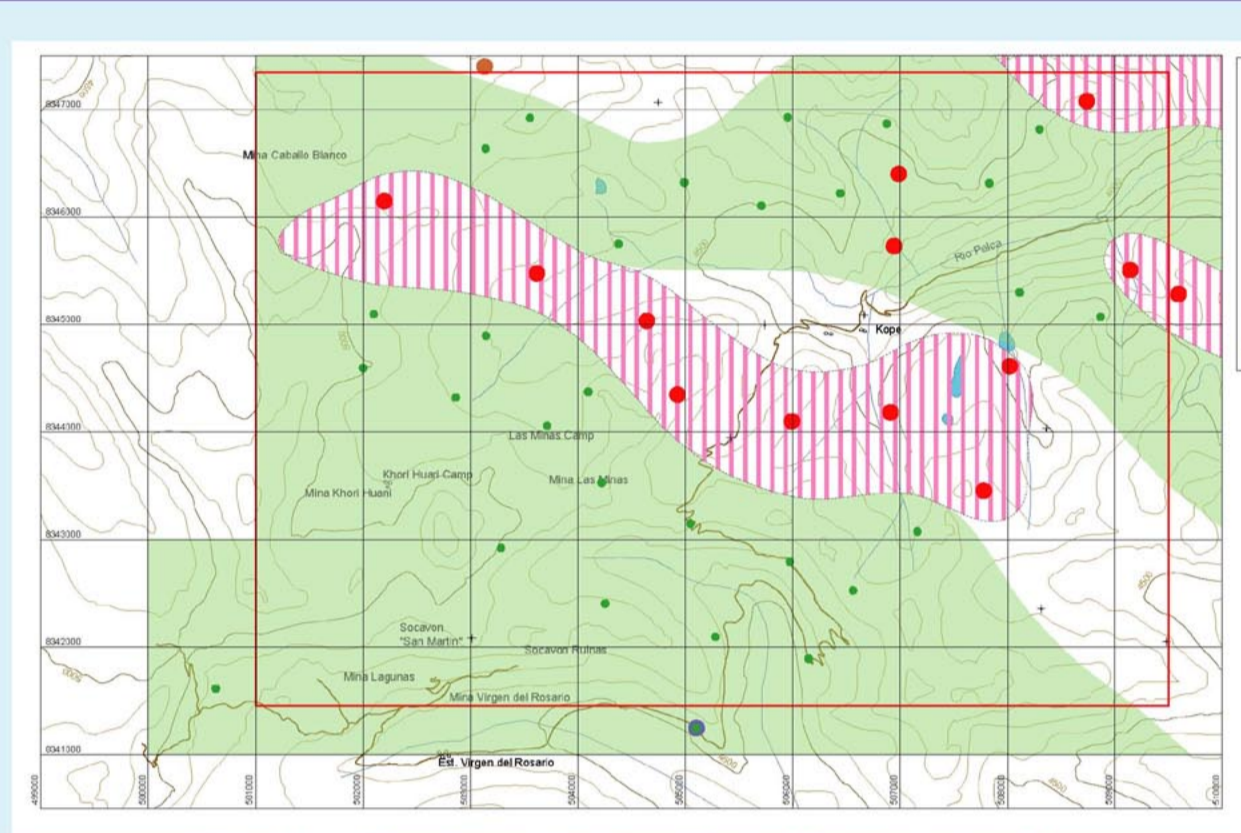
Sector Pelechuco



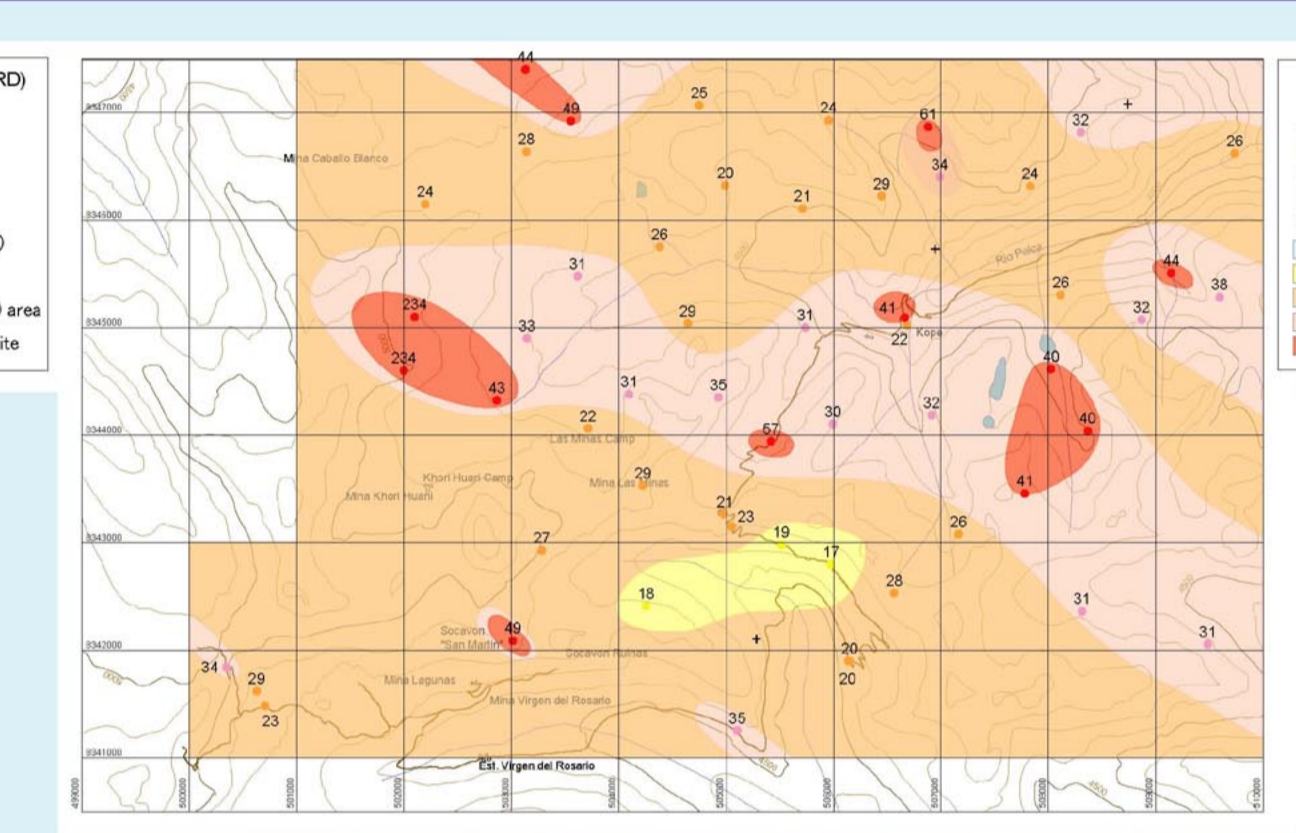
Distribución de resultado difracción de rayos X



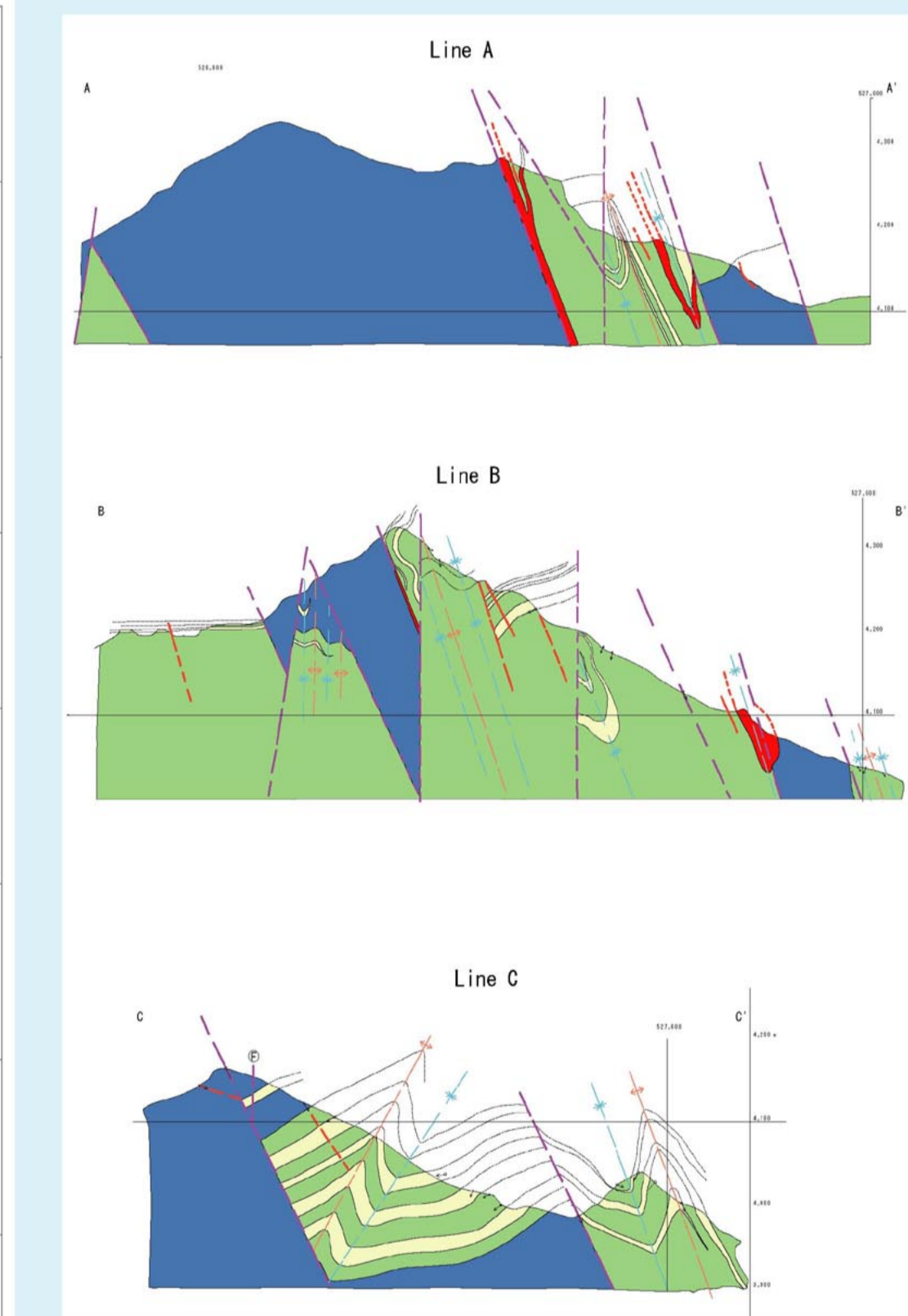
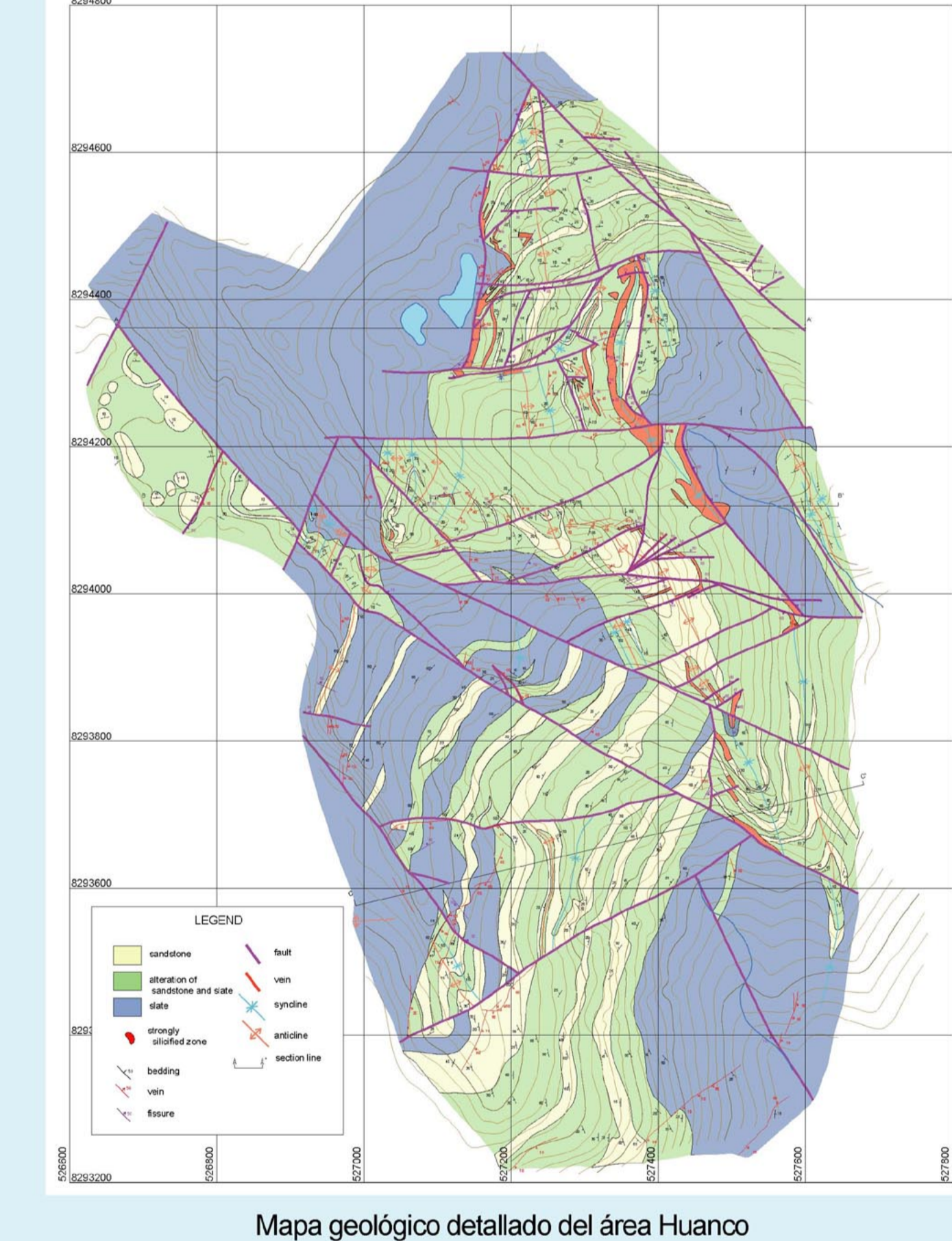
Distribución del grado de grafitización



Distribución de resultado difracción de rayos X



Distribución del grado de grafitización



Sector Tacacoma

