

卷末資料 10 岩石地化学探查分析結果  
**Apéndice 10 Análisis geoquímico de rocas**





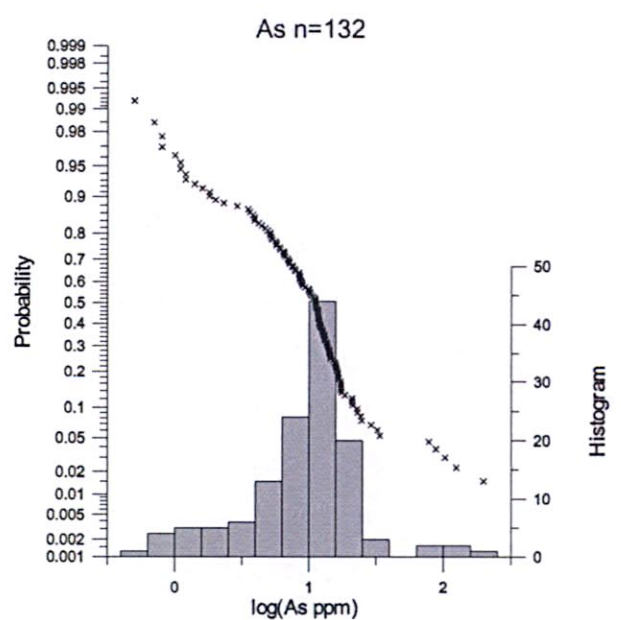
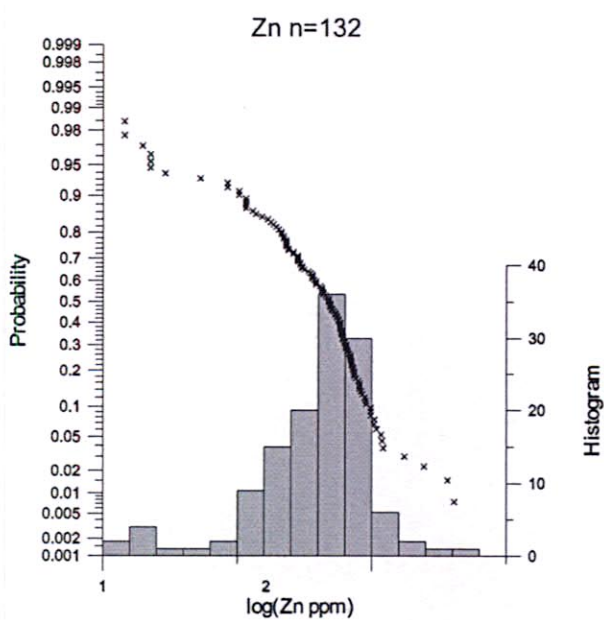
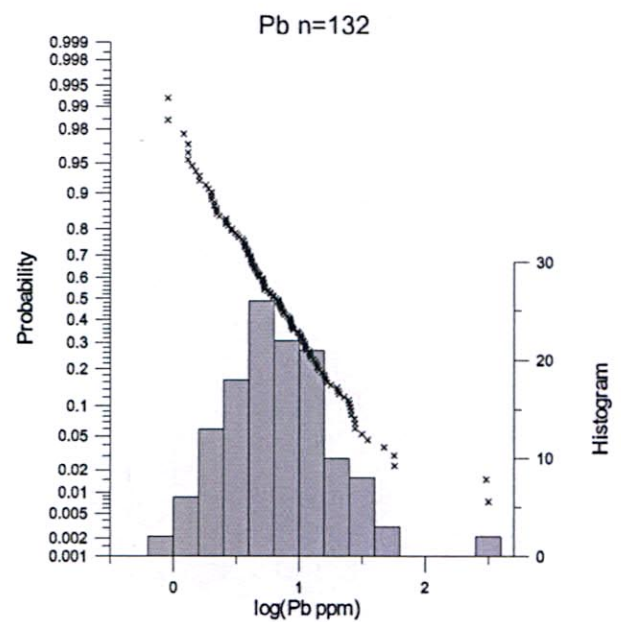
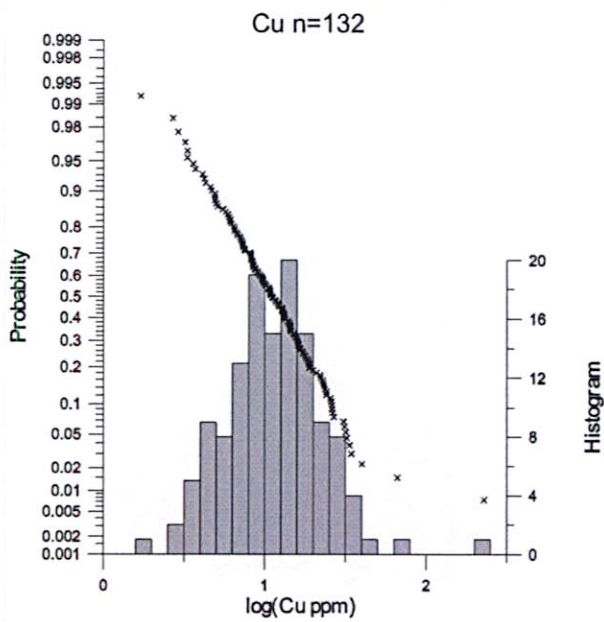
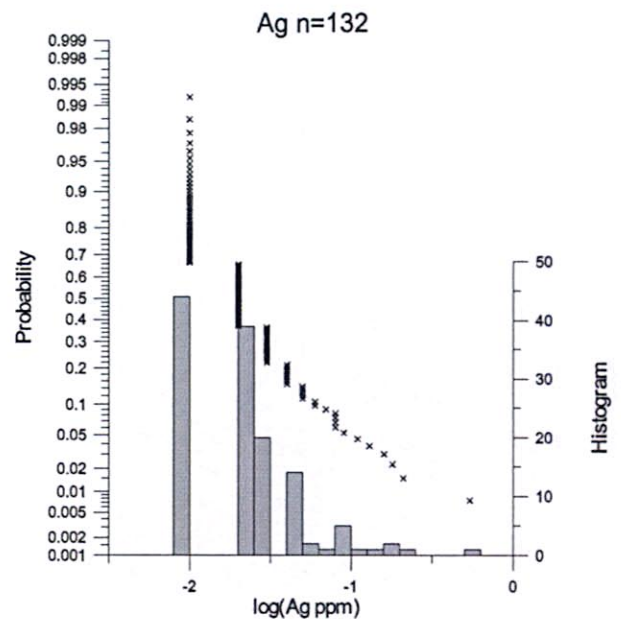
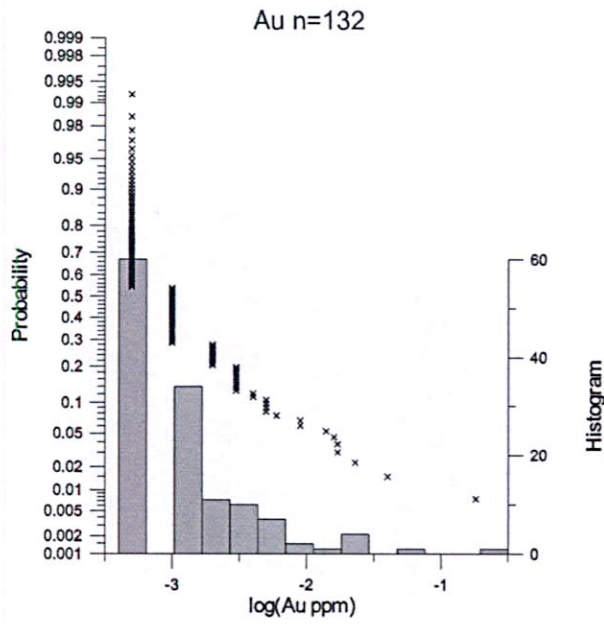
# 岩石地化学分析结果一览表

## Análisis geoquímico de rocas 3 / 3

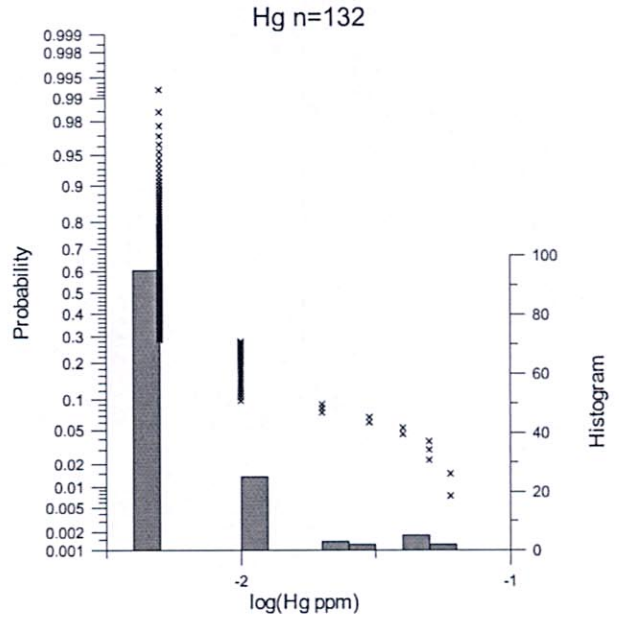
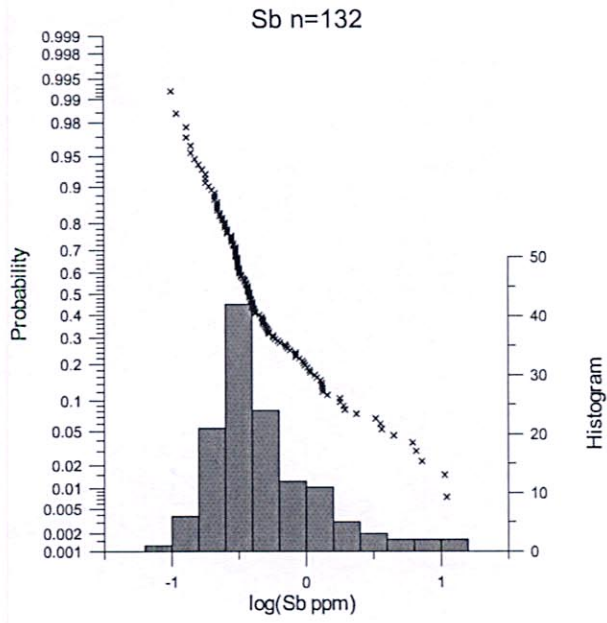
Social No.	Sample No.	district	Au	Ag	Al	As	B	Ba	Be	Bi	Cd	Ce	Co	Cr	Cu	Fe	Ga	Ge	Hf	Hg	In	K	La	Li	Mg	Mn	Mo	Na	Nb	Ni	P	Pb	Rb	Re	S	Sb	Se	Sn	Sr	Ta	Tb	Ti	Tl	U	V	W	Y	Zn	Zr			
417	11477	Hilo, Hilo	0.001	0.02	2.28	18.4	<10	40	0.65	0.2	0.1	<0.01	80	8.2	80	0.97	11.6	4.14	7.37	0.12	<0.02	<0.01	0.018	0.21	33.2	87.2	0.88	0.59	0.03	0.05	28	540	7.5	14.4	<0.001	<0.01	0.59	2.6	0.3	0.4	11.2	<0.01	0.04	13	<0.005	0.06	0.78	20	0.08	2.84	78	<0.5
418	11478	Hilo, Hilo	<0.001	0.04	2.07	19	<10	40	0.6	0.22	0.08	0.01	81.7	7.9	83	0.92	9.5	3.91	8.11	0.12	<0.02	<0.01	0.013	0.2	29.8	87.8	0.75	0.31	0.03	0.05	24.7	430	20	12.8	<0.001	<0.01	0.31	2.4	0.3	0.4	7.8	<0.01	0.03	13.8	<0.005	0.07	1.86	17	0.07	2.82	83	1.1
419	11479	Hilo, Hilo	0.001	0.03	3.43	4.5	<10	40	0.98	0.27	0.11	<0.01	22.3	8.3	83	1.16	7.5	5.69	10.4	0.1	<0.02	<0.01	0.023	0.17	17.3	182	1.23	0.48	0.05	0.05	23.8	890	12.4	10.7	<0.001	0.03	0.21	4	0.2	0.3	0.6	<0.01	0.04	15	<0.005	0.05	1.12	28	<0.05	2.28	109	<0.5
420	11480	Hilo, Hilo	0.005	0.01	2.25	11.8	<10	50	0.78	0.84	0.11	<0.01	41.9	4.4	48	1.65	12.2	3.25	8.27	0.1	<0.02	<0.01	0.023	0.2	21.5	114	0.75	0.74	0.04	0.05	8.7	890	8.5	14	<0.001	0.1	0.41	3.1	0.2	0.4	11	<0.01	0.04	13.2	<0.005	0.07	0.81	17	<0.05	1.82	54	<0.5
421	11481	Hilo, Hilo	0.003	0.01	2.08	8.4	<10	20	0.61	0.2	0.11	<0.01	44.9	13.1	88	0.98	6.5	4.78	8.25	0.11	<0.02	<0.01	0.014	0.13	21.9	50.3	0.74	0.48	0.01	0.11	25	820	5.2	8.8	<0.001	<0.01	0.25	3.4	0.2	0.4	8.6	<0.01	0.03	10.8	<0.005	0.05	0.77	24	0.09	4.08	78	<0.5
422	11482	Hilo, Hilo	0.001	0.02	2.37	8.6	<10	50	0.4	0.38	0.04	<0.01	70.6	6.5	82	2.08	7.3	3.88	8.86	0.11	<0.02	<0.01	0.018	0.28	38.2	61.2	0.88	0.72	0.04	0.05	18.8	360	10.7	17	<0.001	<0.01	0.28	2.8	0.2	0.4	11.4	<0.01	0.03	16.4	<0.005	0.06	0.88	24	0.05	2.42	87	<0.5
423	11483	Hilo, Hilo	0.002	0.01	1.27	7.1	<10	30	0.93	0.14	0.08	0.01	59.8	10.6	41	0.92	9.3	3.18	3.94	0.09	<0.02	<0.01	0.024	0.17	28.1	33.5	0.4	0.35	0.05	0.05	23.2	520	2.7	10.8	<0.001	<0.01	0.28	2.4	0.2	0.3	8.7	<0.01	0.01	13	<0.005	0.06	0.88	10	0.05	3.54	51	0.8
424	11484	Hilo, Hilo	0.002	0.02	2.51	11.7	<10	40	0.88	0.23	0.1	<0.01	67.1	10.2	64	2.19	14.3	4.38	5.87	0.11	<0.02	<0.01	0.02	0.18	31.4	66.7	0.83	0.51	0.03	0.05	23.1	880	13.8	11.8	<0.001	<0.01	0.31	2.8	0.3	0.3	8.8	<0.01	0.03	14.2	<0.005	0.05	1.04	17	0.08	3.13	84	<0.5
438	11813	Hilo, Hilo	<0.001	0.01	3.71	0.8	<10	20	1.34	0.01	0.14	<0.01	92.1	10.2	104	0.78	15.2	5.57	13.85	0.08	0.03	<0.01	0.028	0.11	35.4	78.7	2.78	0.38	0.03	0.05	53.9	730	0.7	5.8	<0.001	0.01	0.32	8.5	0.2	1	7	<0.01	0.01	8.8	<0.005	<0.02	0.45	71	0.1	8.04	23	<0.5
439	11814	Hilo, Hilo	0.002	0.02	1.4	13	<10	80	0.24	0.38	0.01	<0.01	94.1	1.7	37	1.16	8.4	2.64	4.08	0.06	<0.02	<0.01	0.008	0.18	18.9	37.8	0.86	0.28	0.04	0.05	3.8	340	2.8	10.2	0.001	0.05	0.32	1.8	0.5	0.2	7.8	<0.01	0.04	11.1	<0.005	0.06	0.82	73	0.08	1.32	34	<0.5

岩石分析值記述統計結果  
 Estadística descriptiva (rocas)

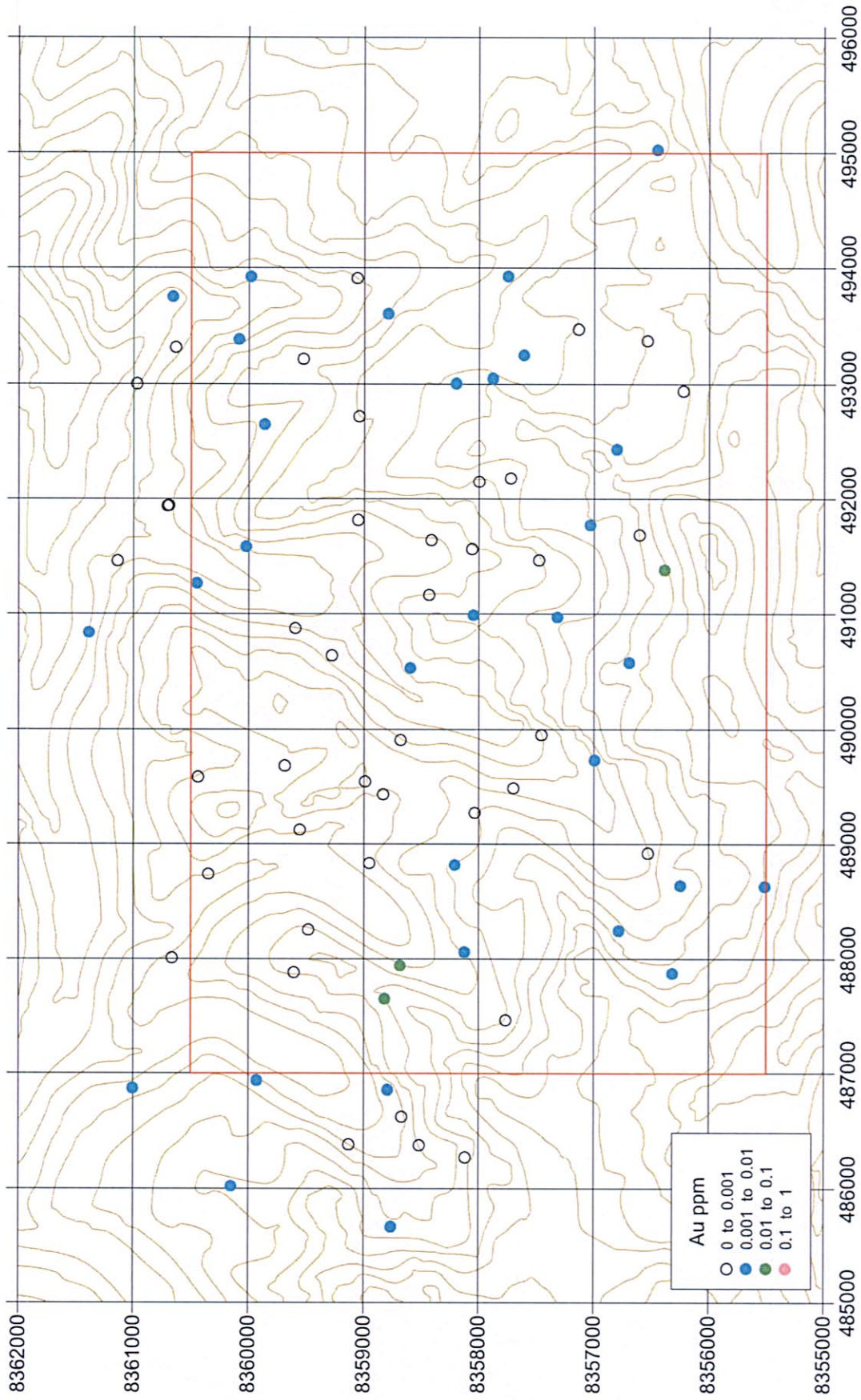
Element	Mean	Std. Deviation	Min	Max	Unit
Au	0.004	0.016	<0.001	0.181	ppm
Ag	0.033	0.054	<0.02	0.54	ppm
Cu	14.991	20.873	1.4	229	ppm
Pb	14.154	38.224	0.7	317	ppm
Zn	67.152	30.434	2	202	ppm
As	37.375	262.610	<1	3020	ppm
Sb	0.911	1.681	0.09	11	ppm
Hg	0.009	0.011	<0.01	0.06	ppm
Ga	6.678	2.732	1.46	23.6	ppm
In	0.020	0.023	<0.005	0.218	ppm
Sn	0.398	0.189	<0.2	1.4	ppm
W	0.133	0.199	<0.05	1.74	ppm
Al	2.216	0.751	0.34	6.79	%
B	5.038	0.435	<10	10	ppm
Ba	39.962	20.652	<10	200	ppm
Be	0.633	0.300	<0.05	2.45	ppm
Bi	0.409	0.670	<0.01	7.22	ppm
Ca	0.249	0.732	<0.02	6.62	%
Cd	0.018	0.063	<0.01	0.72	ppm
Ce	60.163	28.180	14.25	229	ppm
Co	10.576	12.031	<5	132.5	ppm
Cr	71.455	31.645	37	186	ppm
Cs	1.395	2.025	<0.2	22	ppm
Fe	4.410	2.205	0.39	15	%
Ge	0.118	0.117	<0.05	1.05	ppm
Hf	0.023	0.030	<0.02	0.28	ppm
K	0.185	0.063	<0.02	0.35	%
La	29.133	13.484	6.2	108	ppm
Li	60.977	48.536	2.1	219	ppm
Mg	0.833	0.369	<0.5	2.94	%
Mn	425.008	537.132	19	4790	ppm
Mo	0.673	1.179	0.13	12.35	ppm
Na	0.027	0.013	<0.01	0.1	%
Nb	0.136	0.330	<0.05	2.28	ppm
Ni	26.095	15.626	3.6	170.5	ppm
P	919.924	1540.823	230	>10000	ppm
Rb	11.863	4.741	0.7	32.7	ppm
Re	0.001	0.001	<0.001	0.009	ppm
S	0.111	0.477	<0.01	4	%
Sc	3.446	3.046	1.1	23.3	ppm
Se	0.408	0.365	<0.2	2.4	ppm
Sr	18.851	68.350	4.5	699	ppm
Ta	0.006	0.004	<0.01	0.03	ppm
Te	0.056	0.172	<0.01	1.78	ppm
Th	14.114	6.316	4.1	75.1	ppm
Ti	0.012	0.020	<0.005	0.086	%
Tl	0.042	0.032	<0.02	0.19	ppm
U	1.001	0.705	<0.5	5.76	ppm
V	38.705	135.167	<10	1515	ppm
Y	5.025	7.015	1.09	56.6	ppm
Zr	0.526	0.740	<0.5	7.9	ppm



Histogram of rock geochemistry (1)

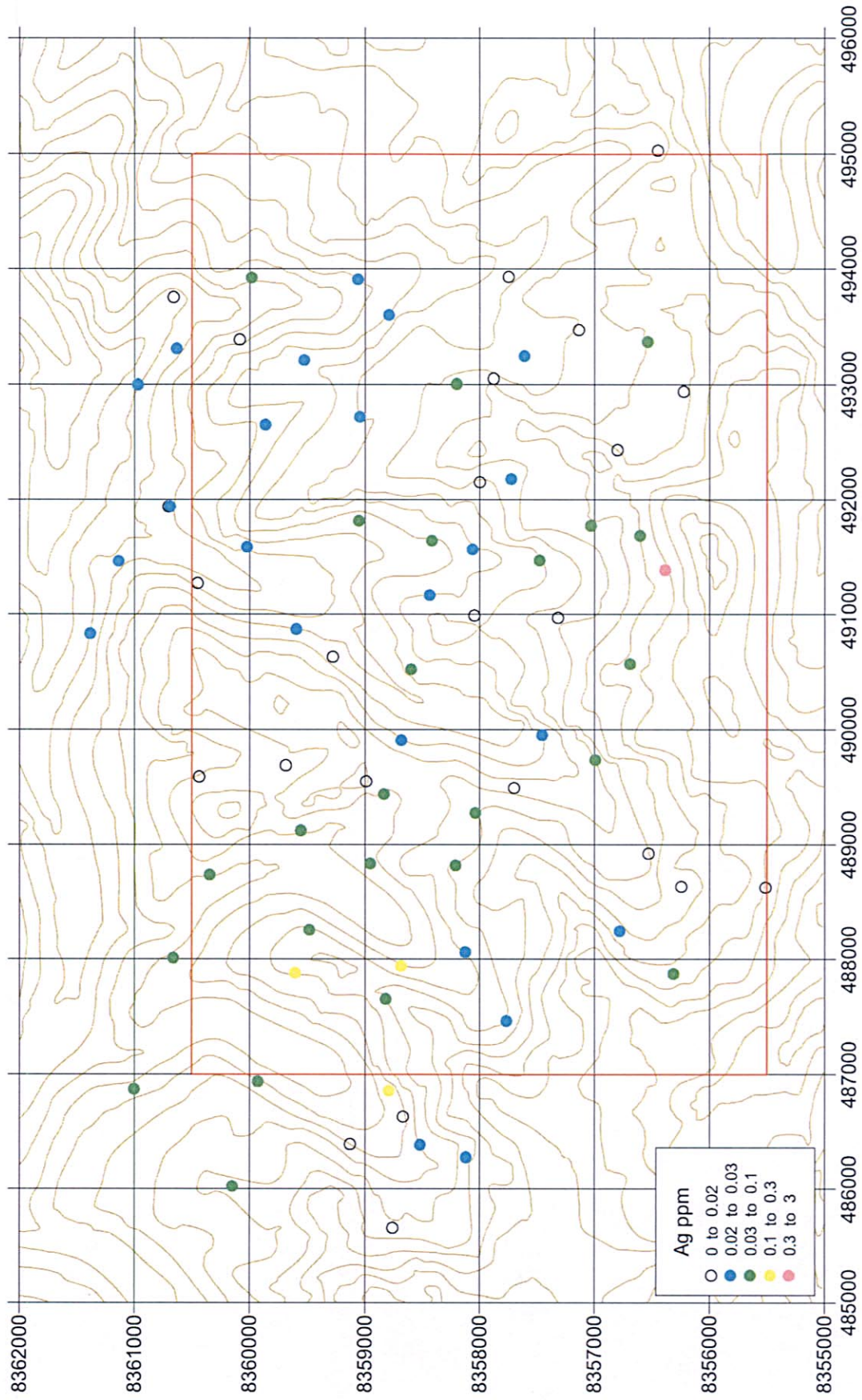


Histogram of rock geochemistry (2)

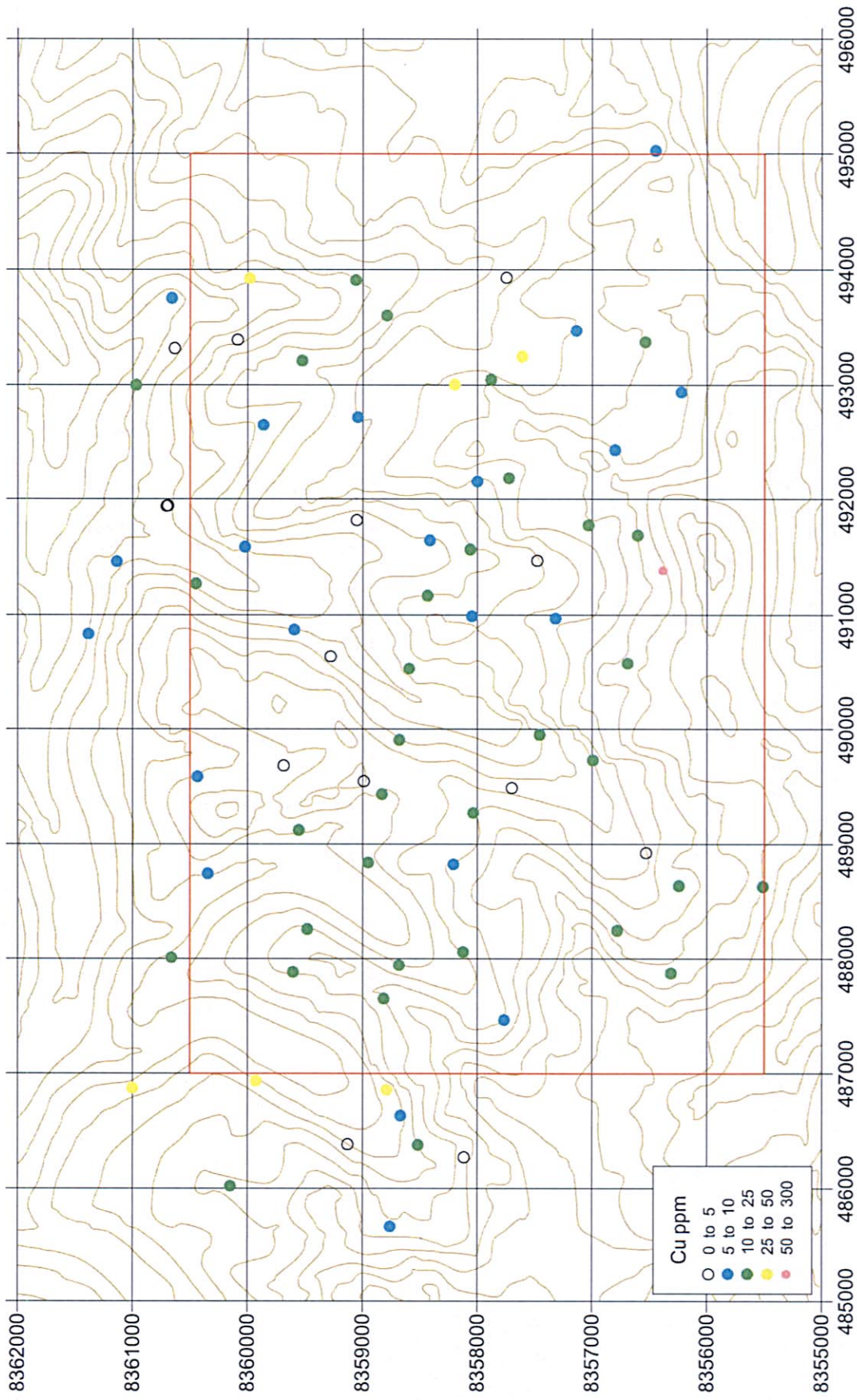


Rock geochemistry Pelechuco

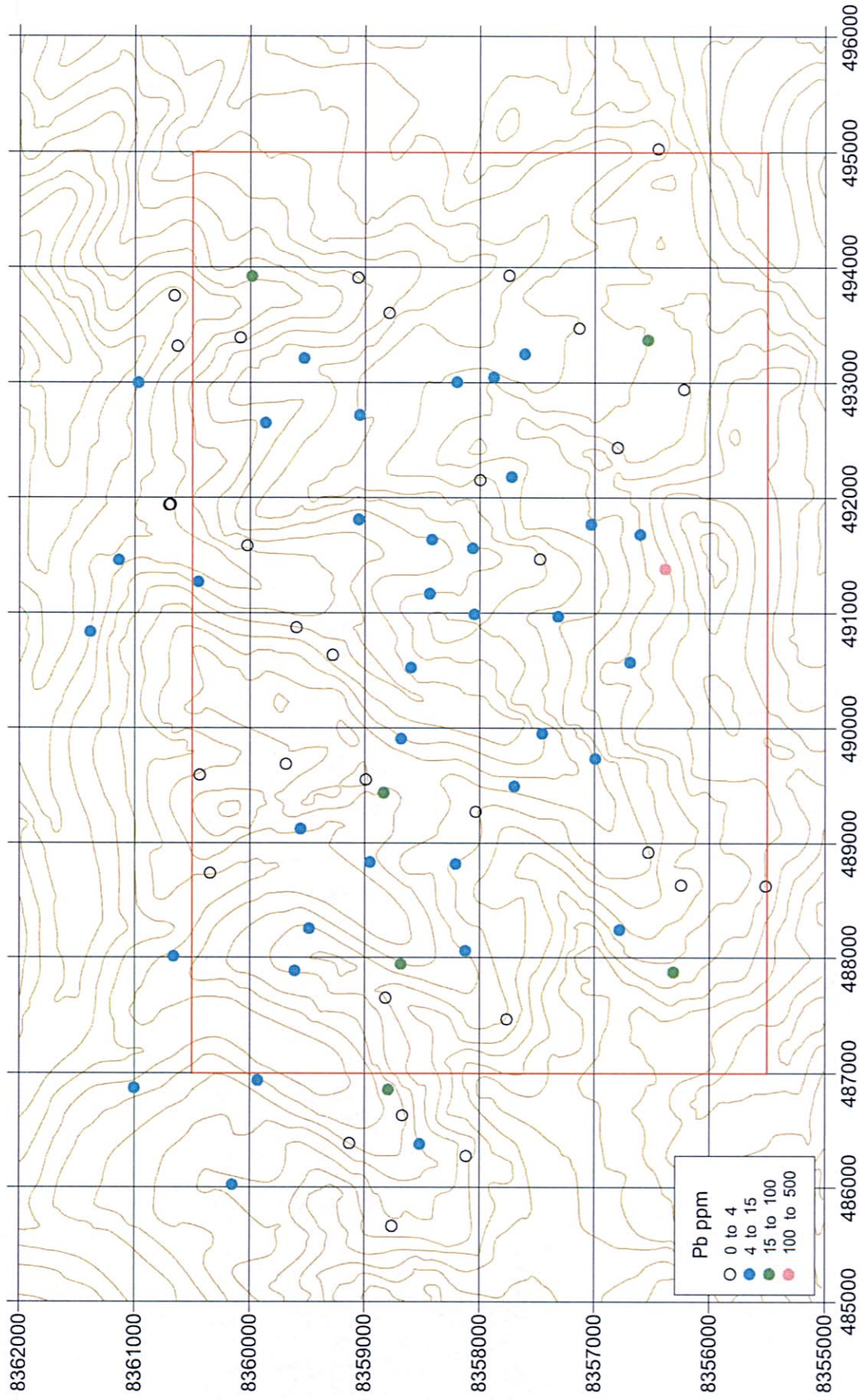




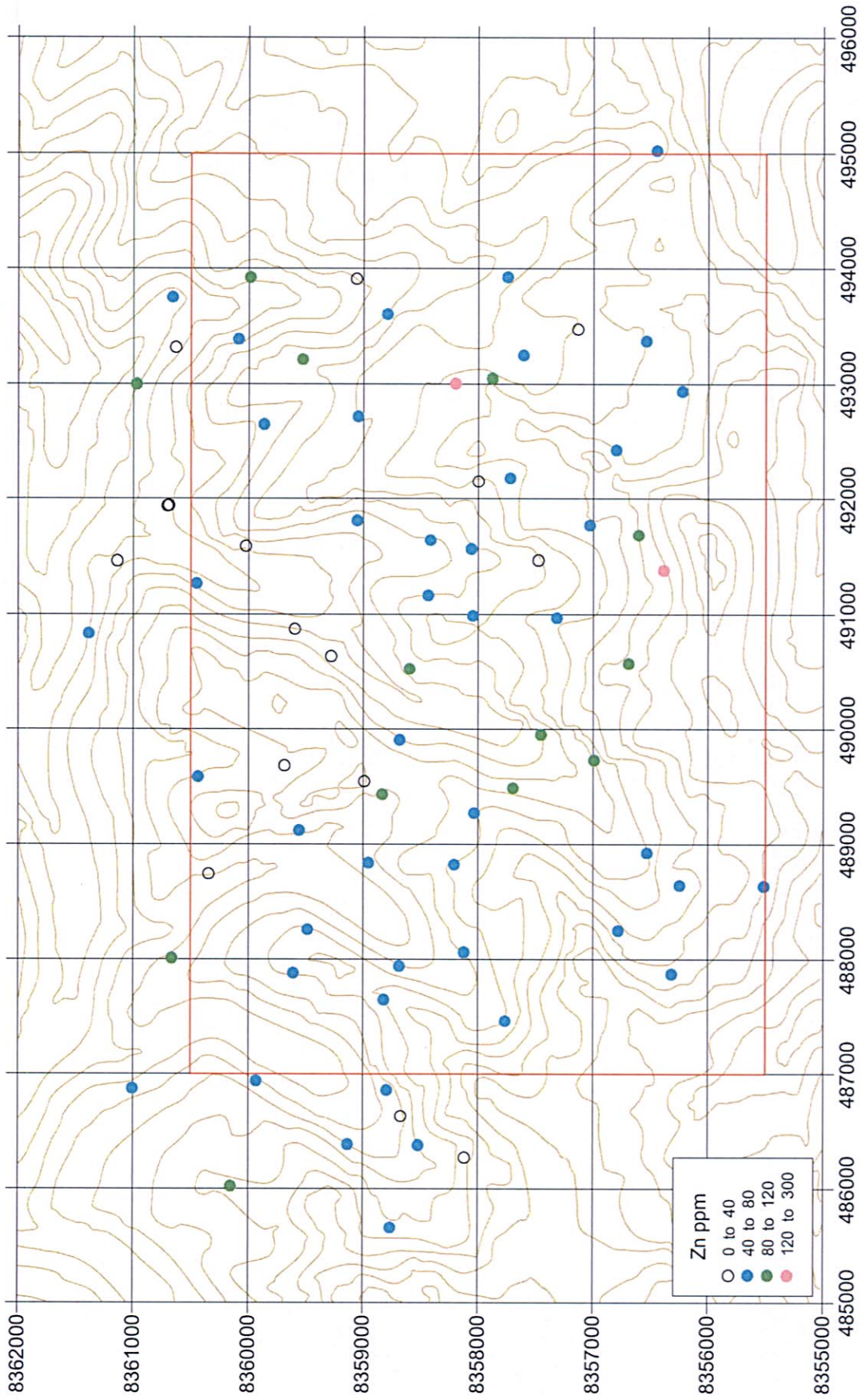
Rock geochemistry Pelechuco



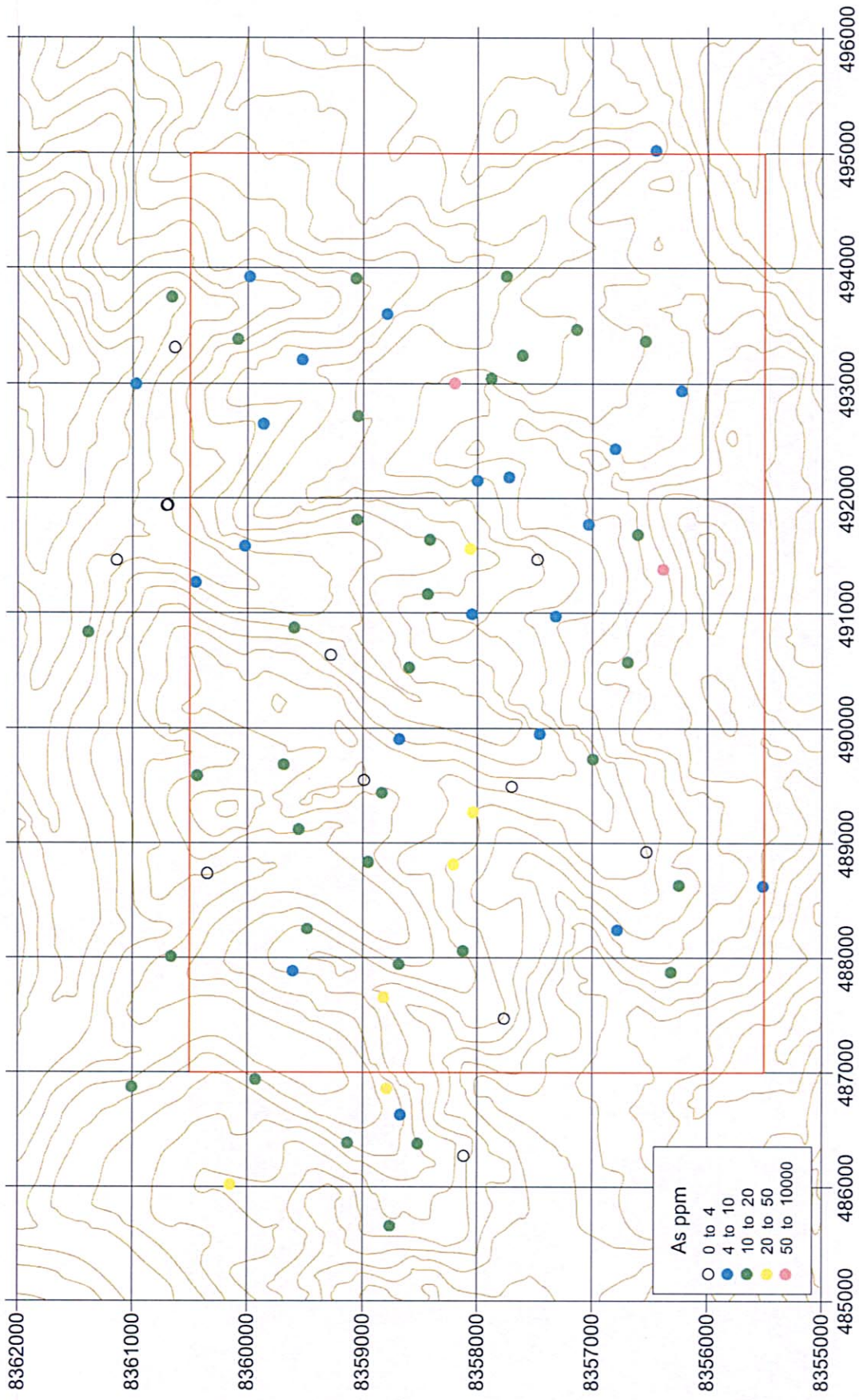
Rock geochemistry Pelechuco



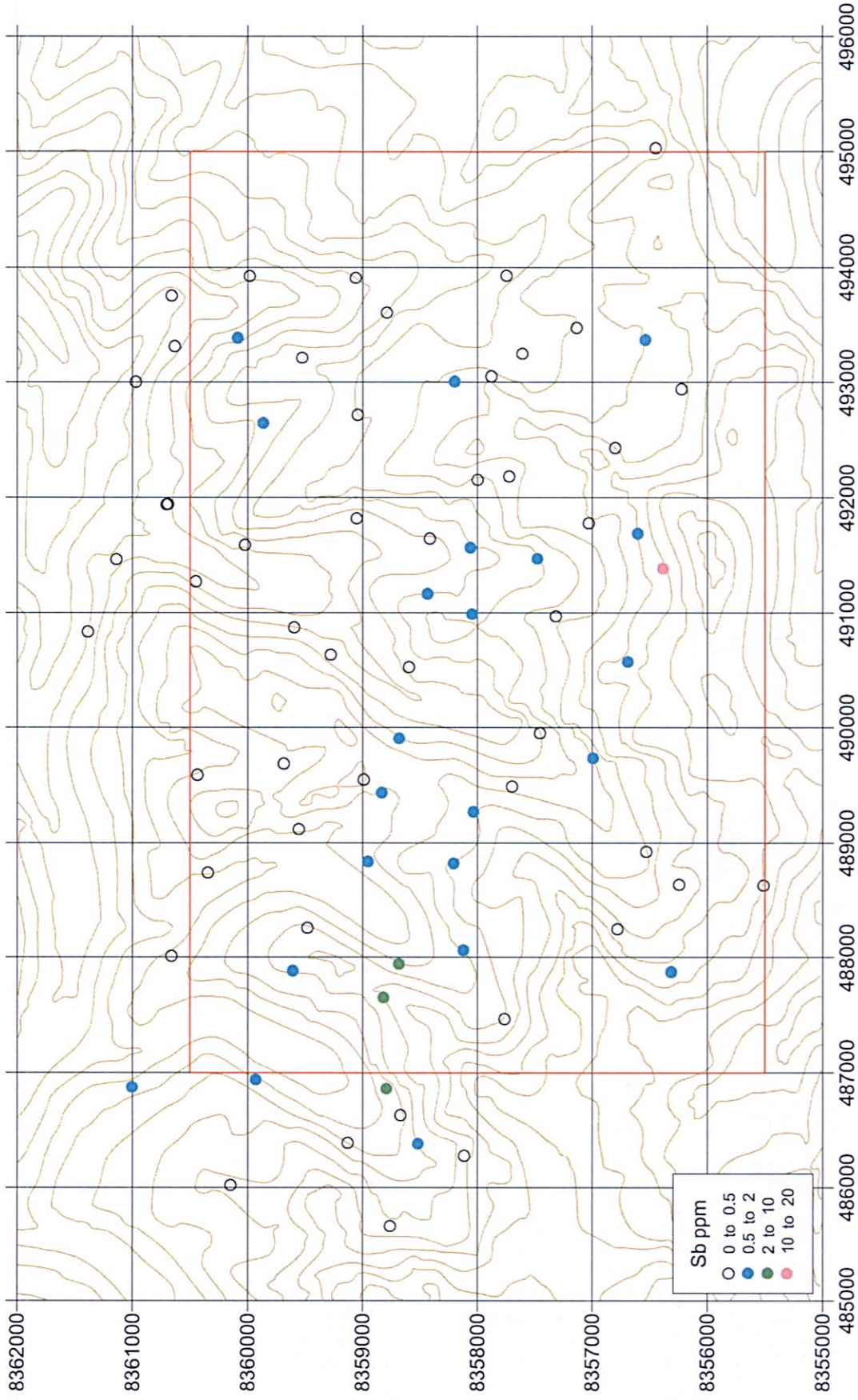
Rock geochemistry Pelechuco



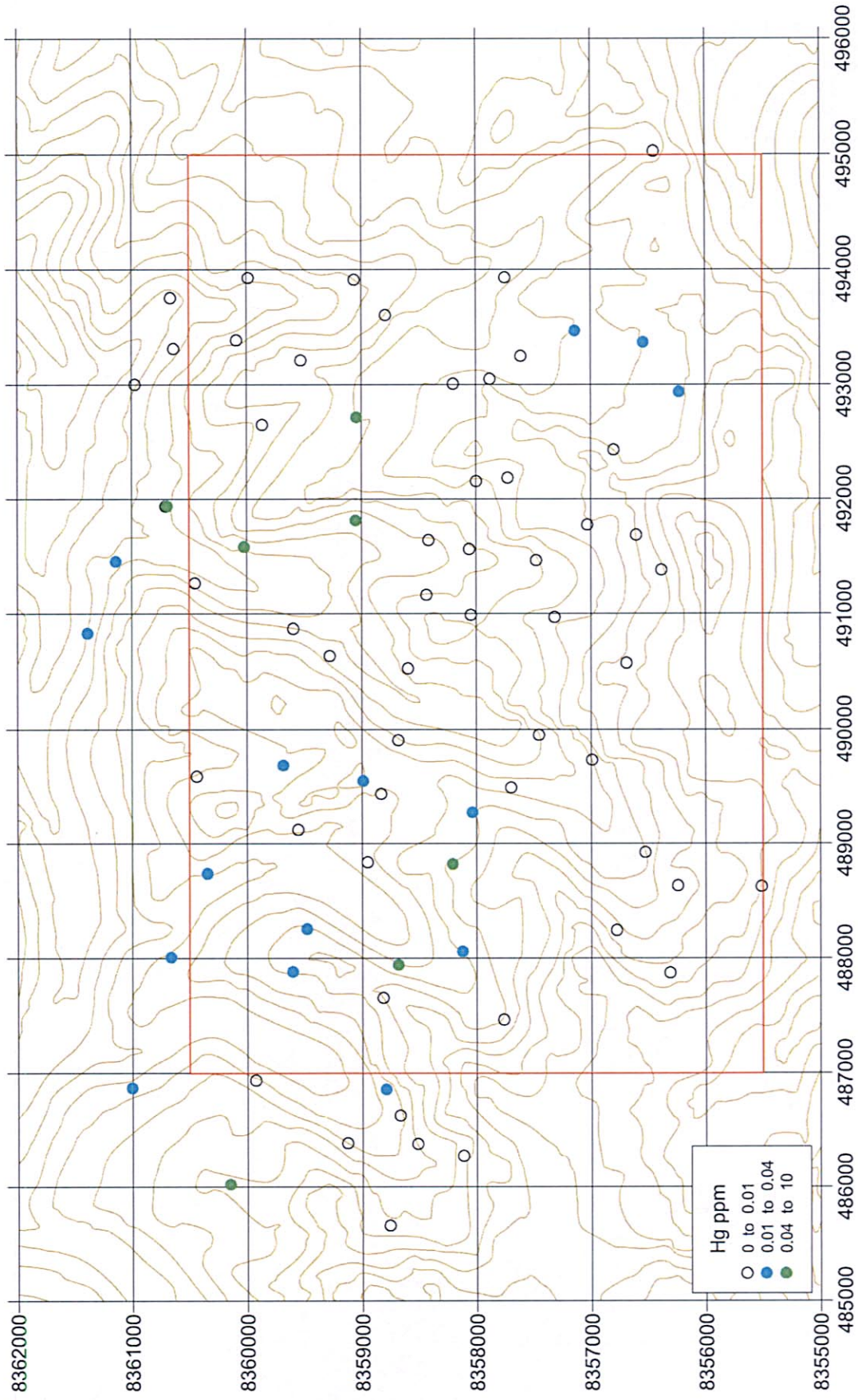
Rock geochemistry Pelechuco



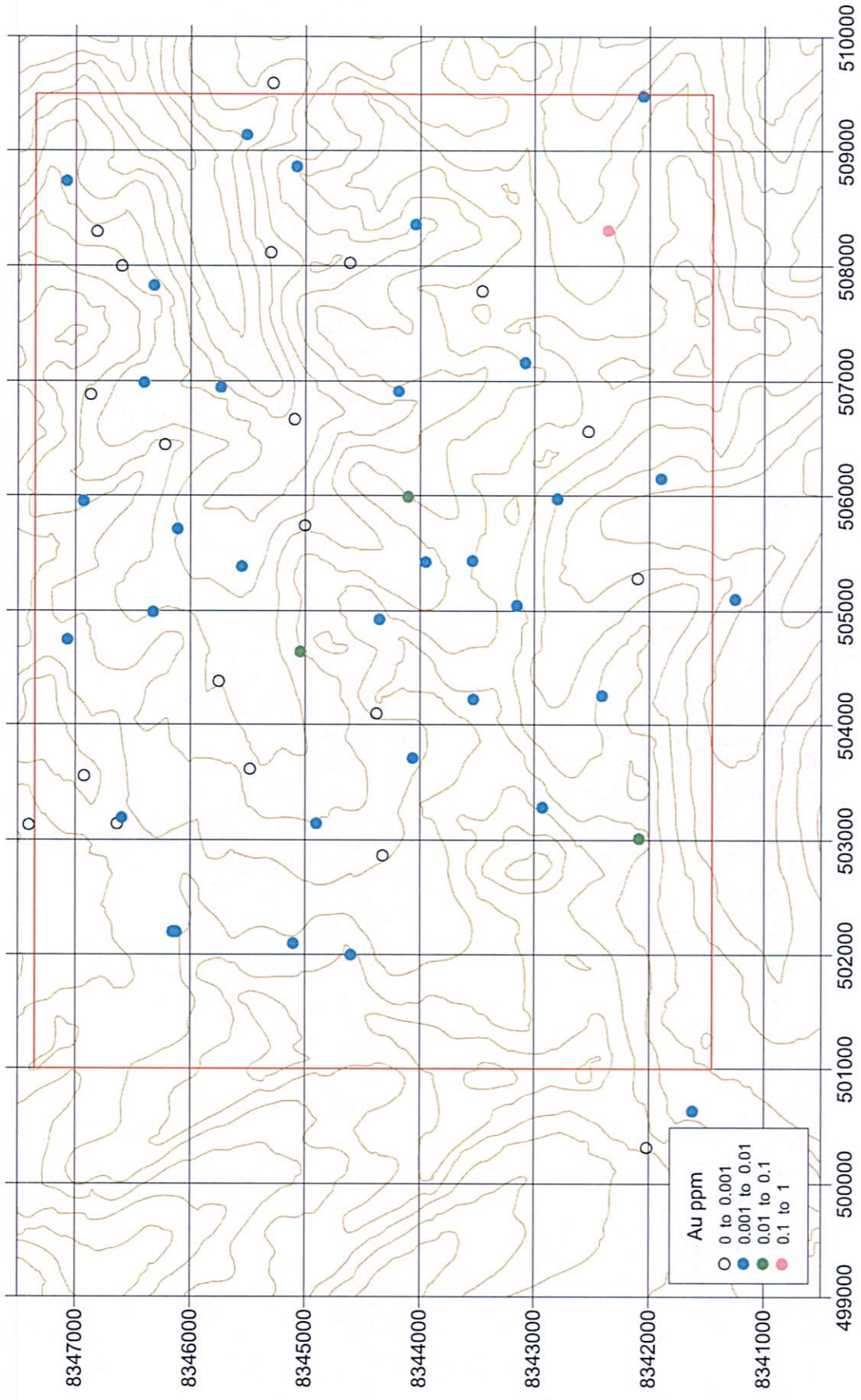
Rock geochemistry Pelechucu



Rock geochemistry Pelechuco

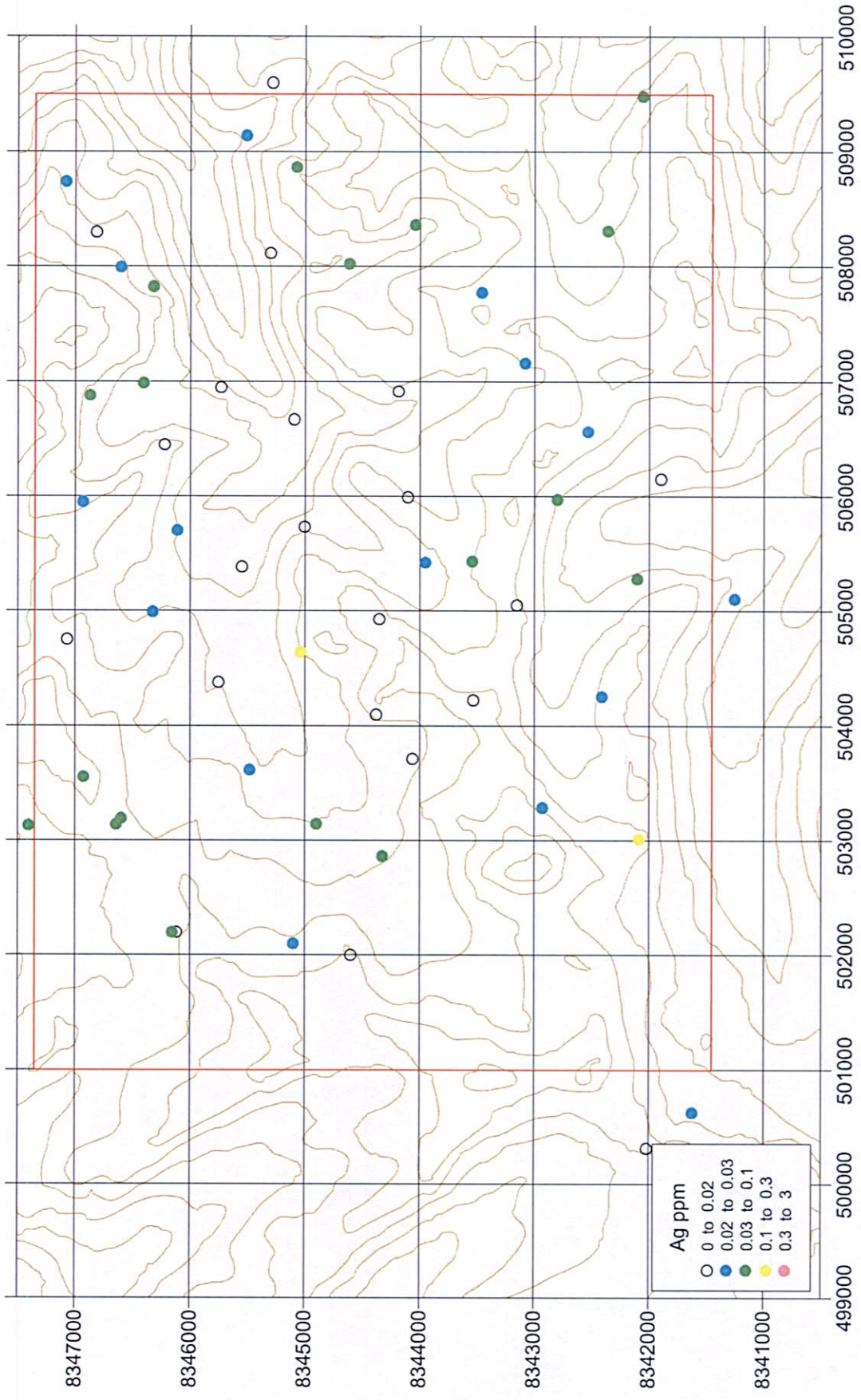


Rock geochemistry Pelechuco

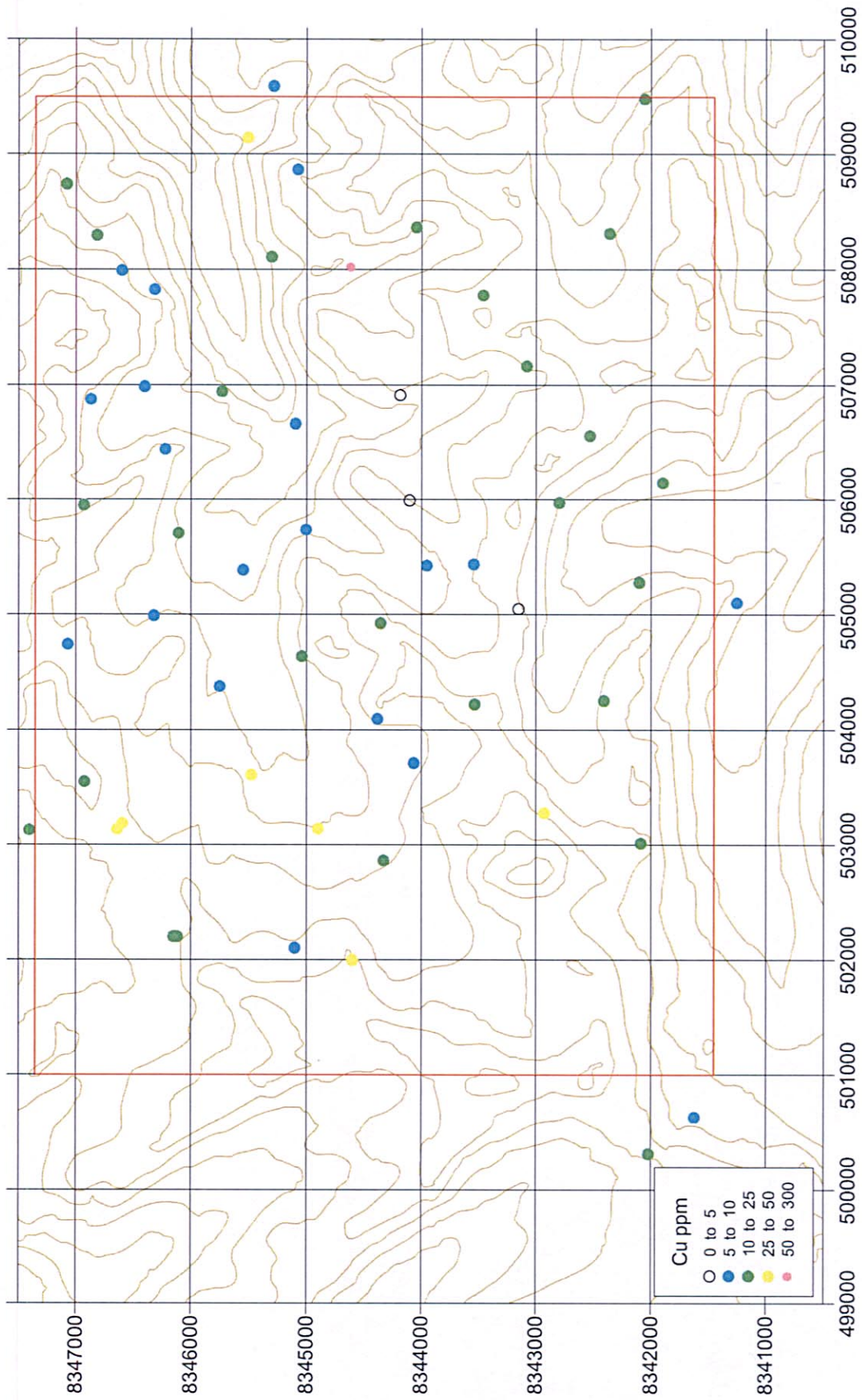


Rock geochemistry Hilo Hilo

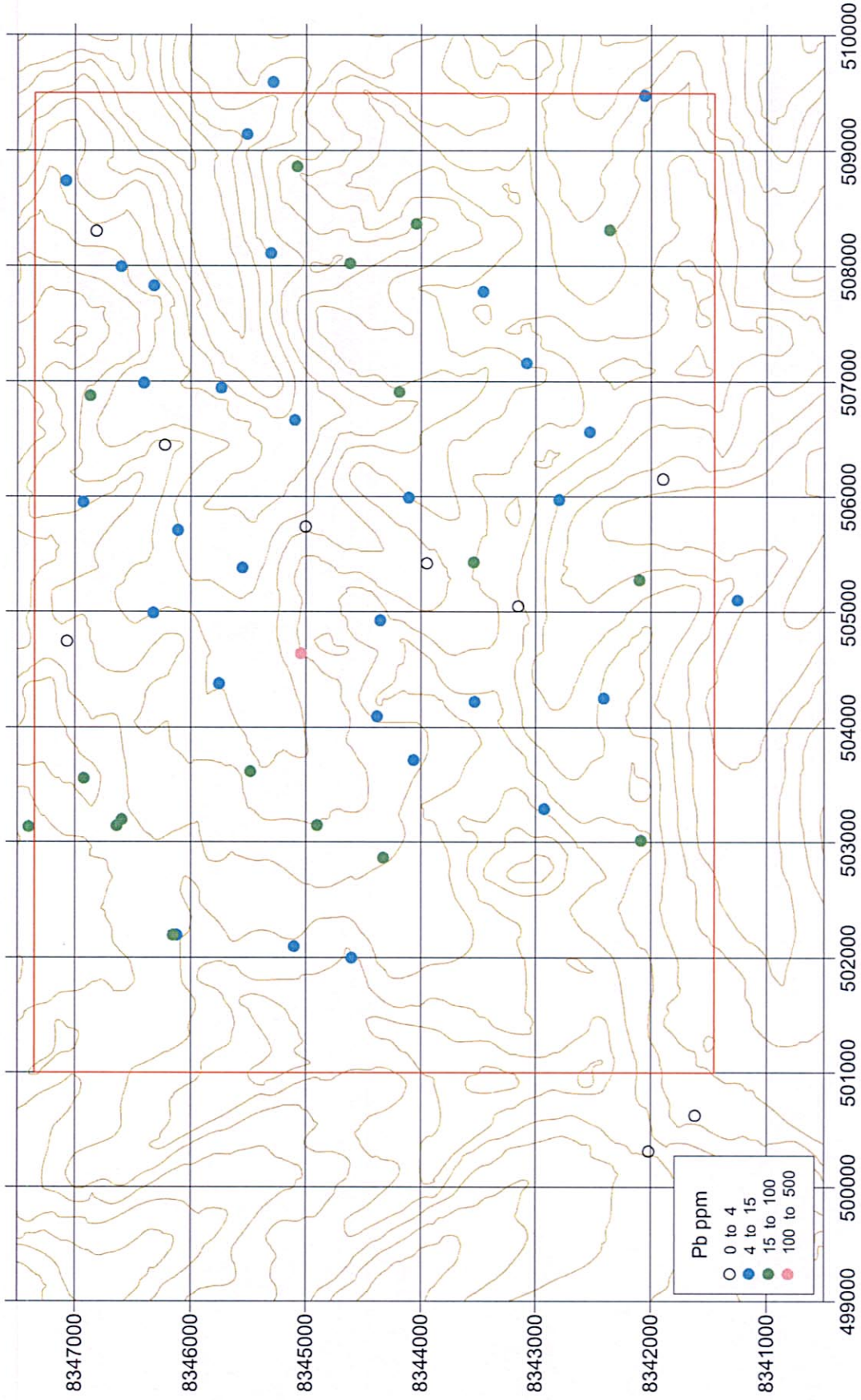




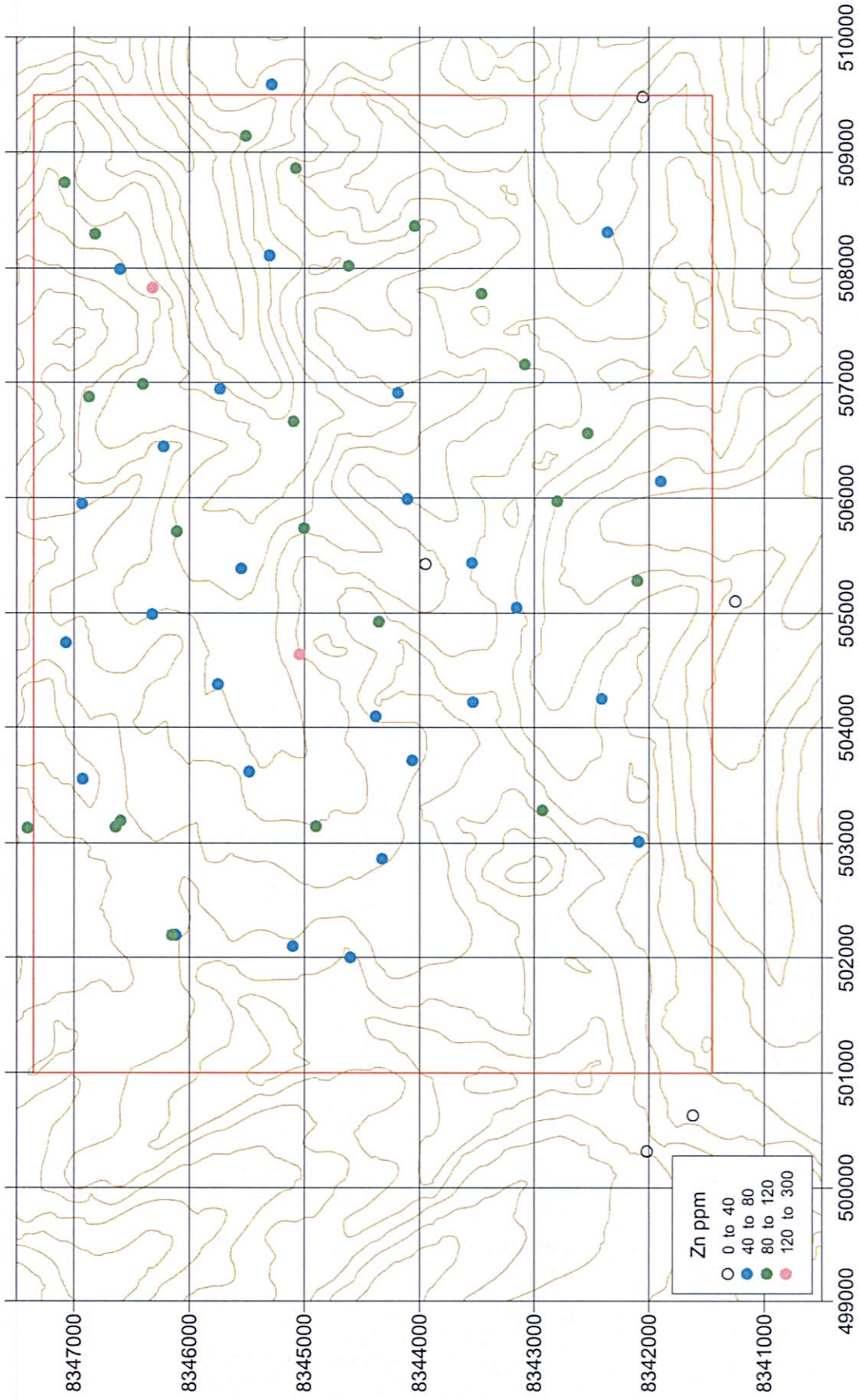
Rock geochemistry Hilo Hilo



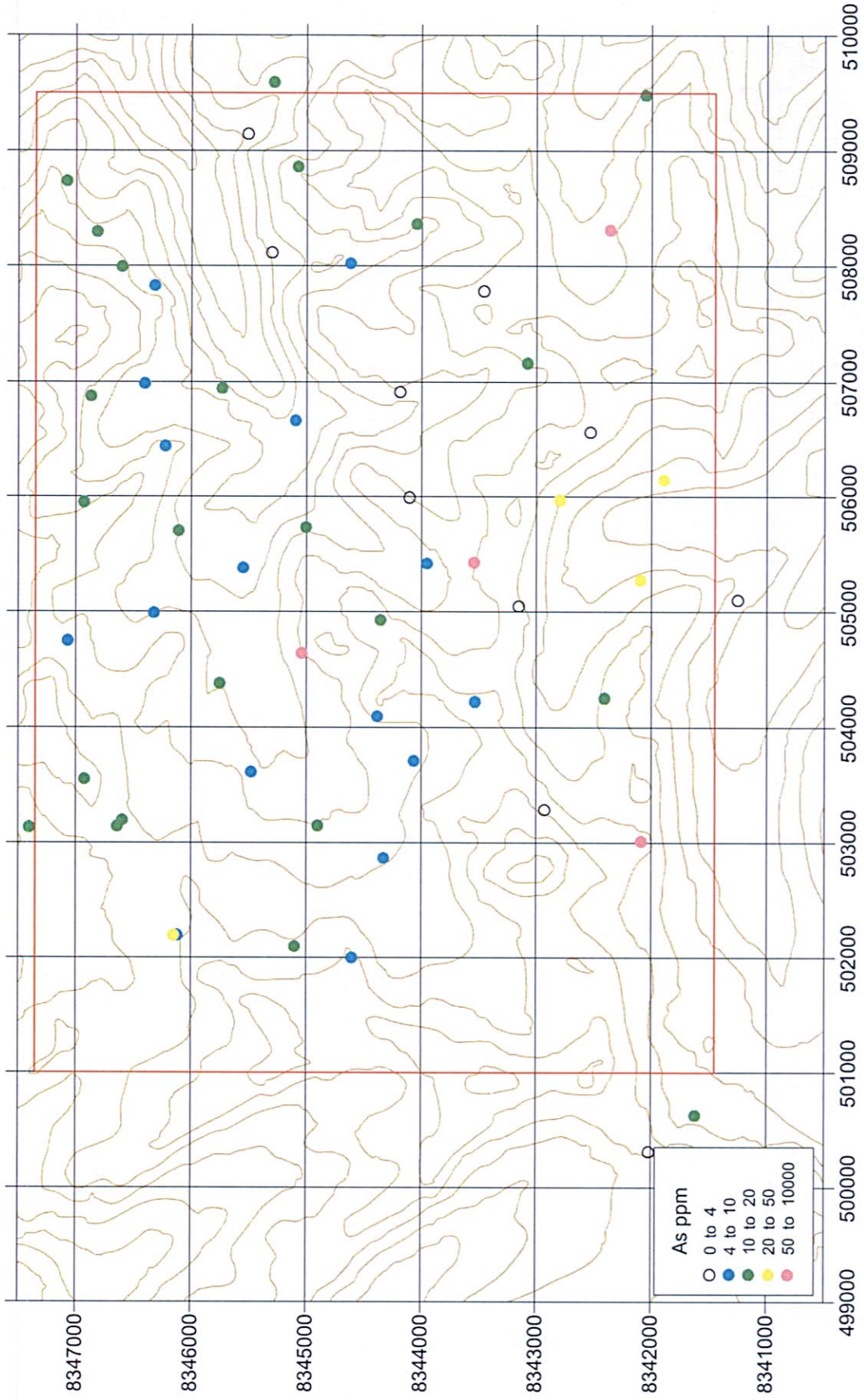
Rock geochemistry Hilo Hilo



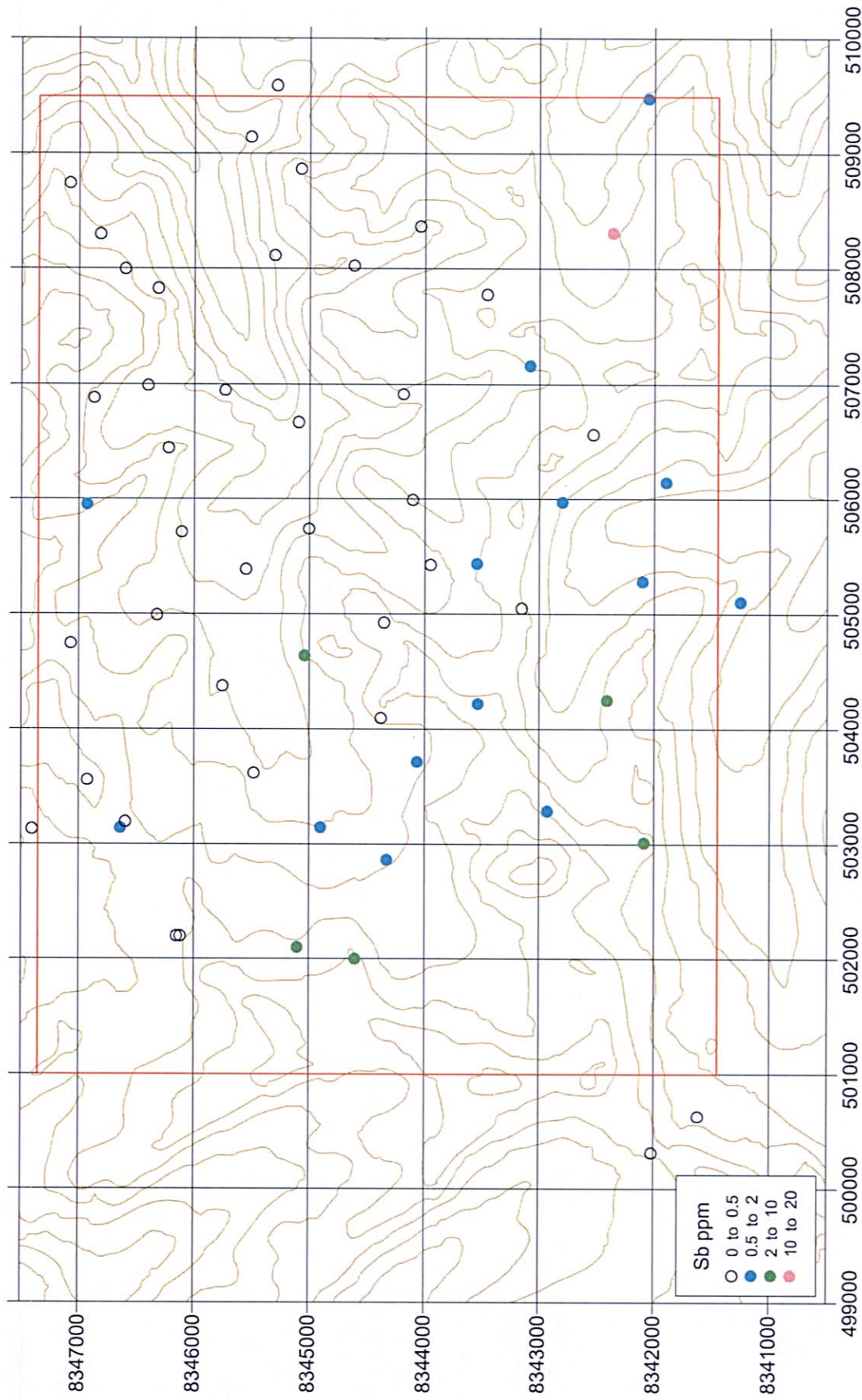
Rock geochemistry Hilo Hilo



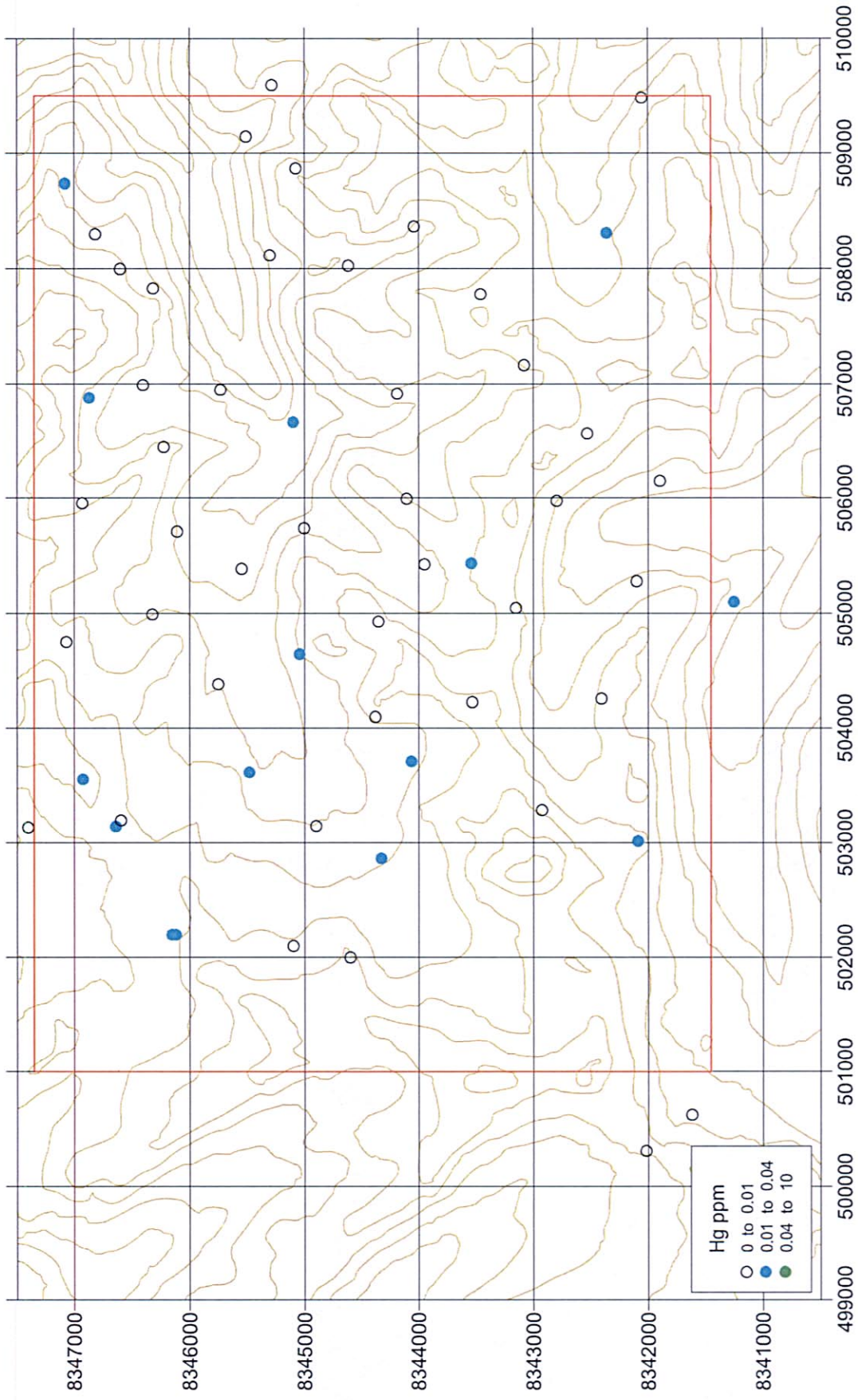
Rock geochemistry Hilo Hilo



Rock geochemistry Hilo Hilo



Rock geochemistry Hilo Hilo



Rock geochemistry Hilo Hilo