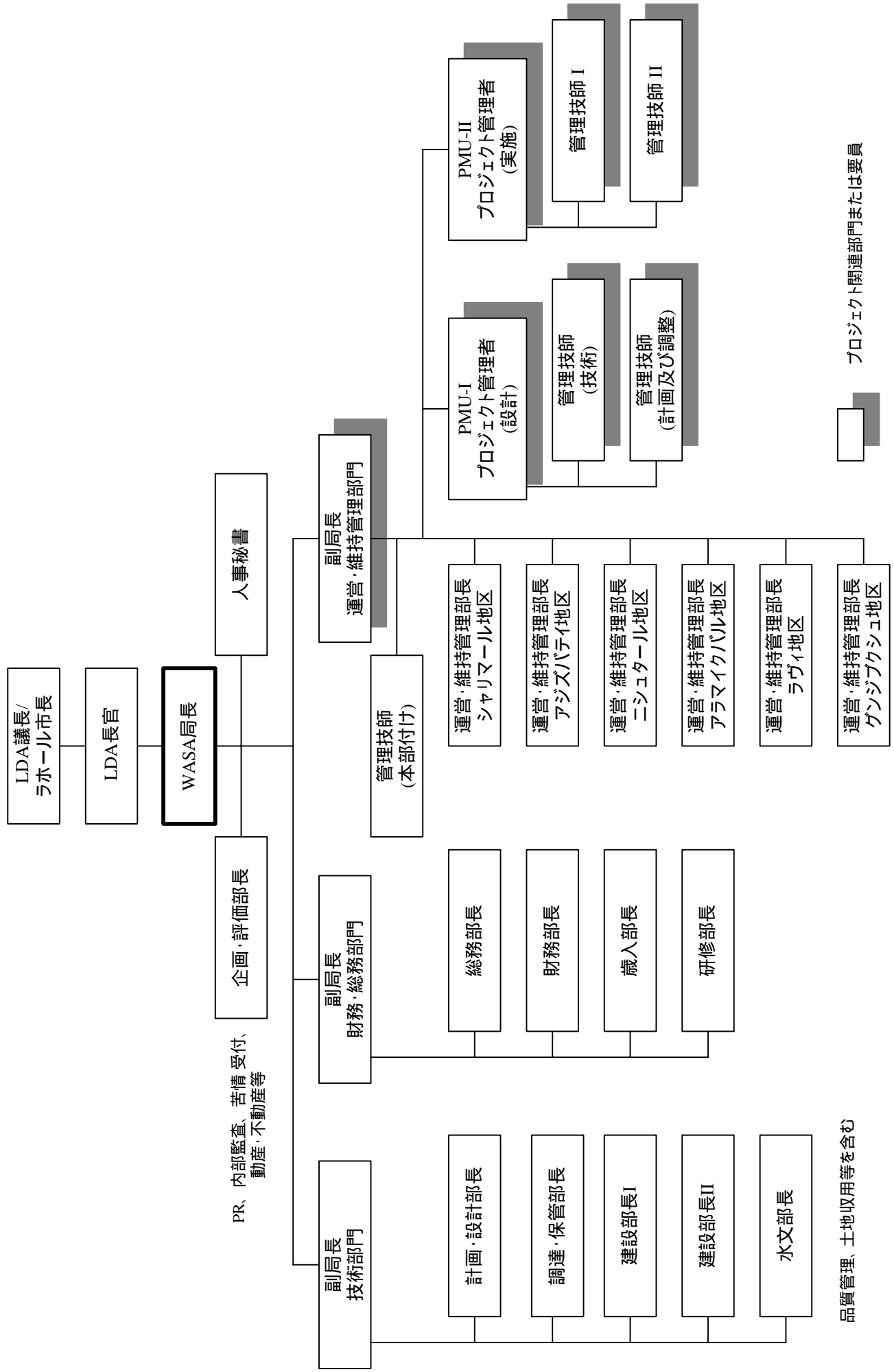


圖面集



品質管理、土地収用等を含む

プロジェクト関連部門または要員

図2.1 WASA 組織図

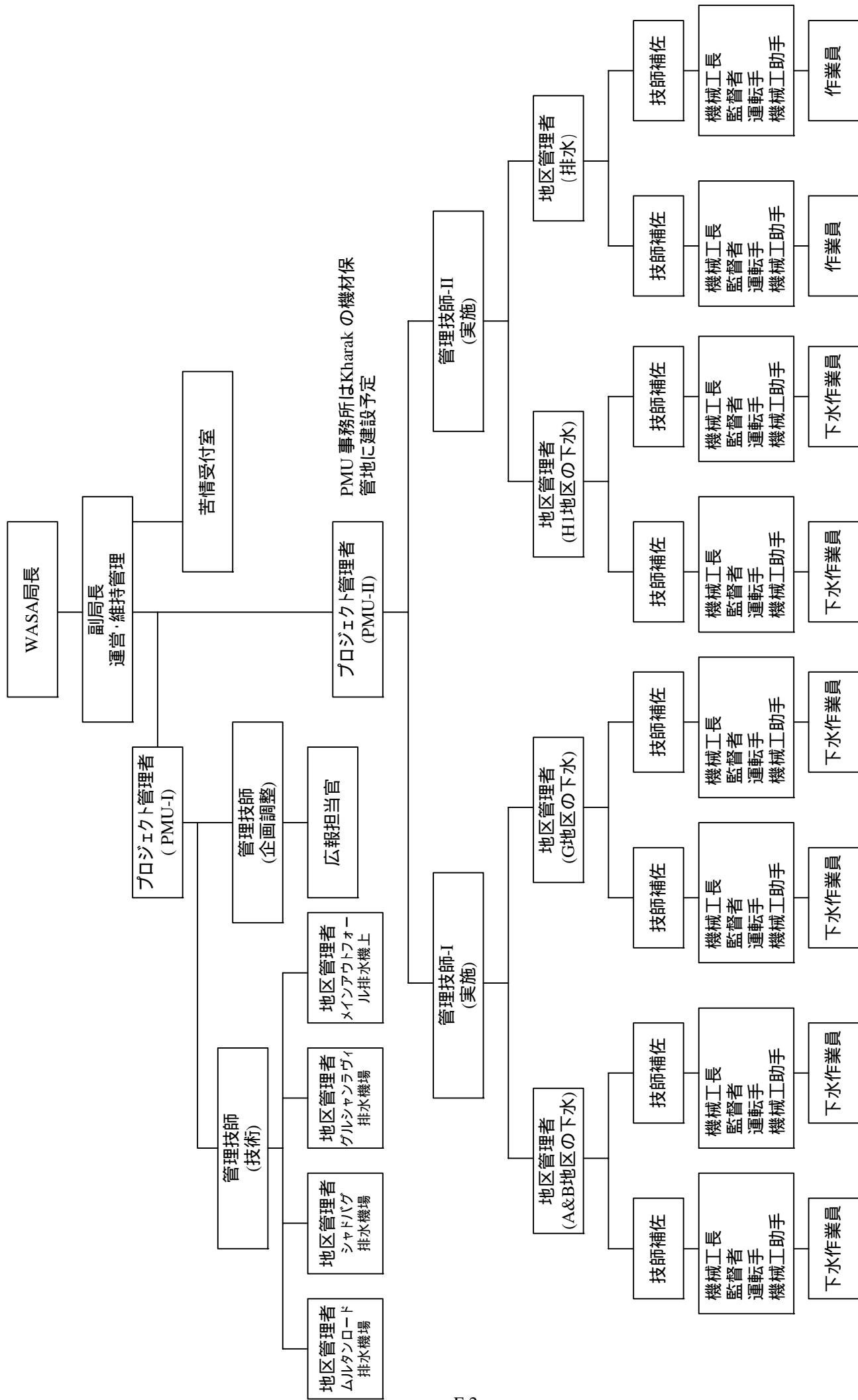


図2.2 PMU組織図

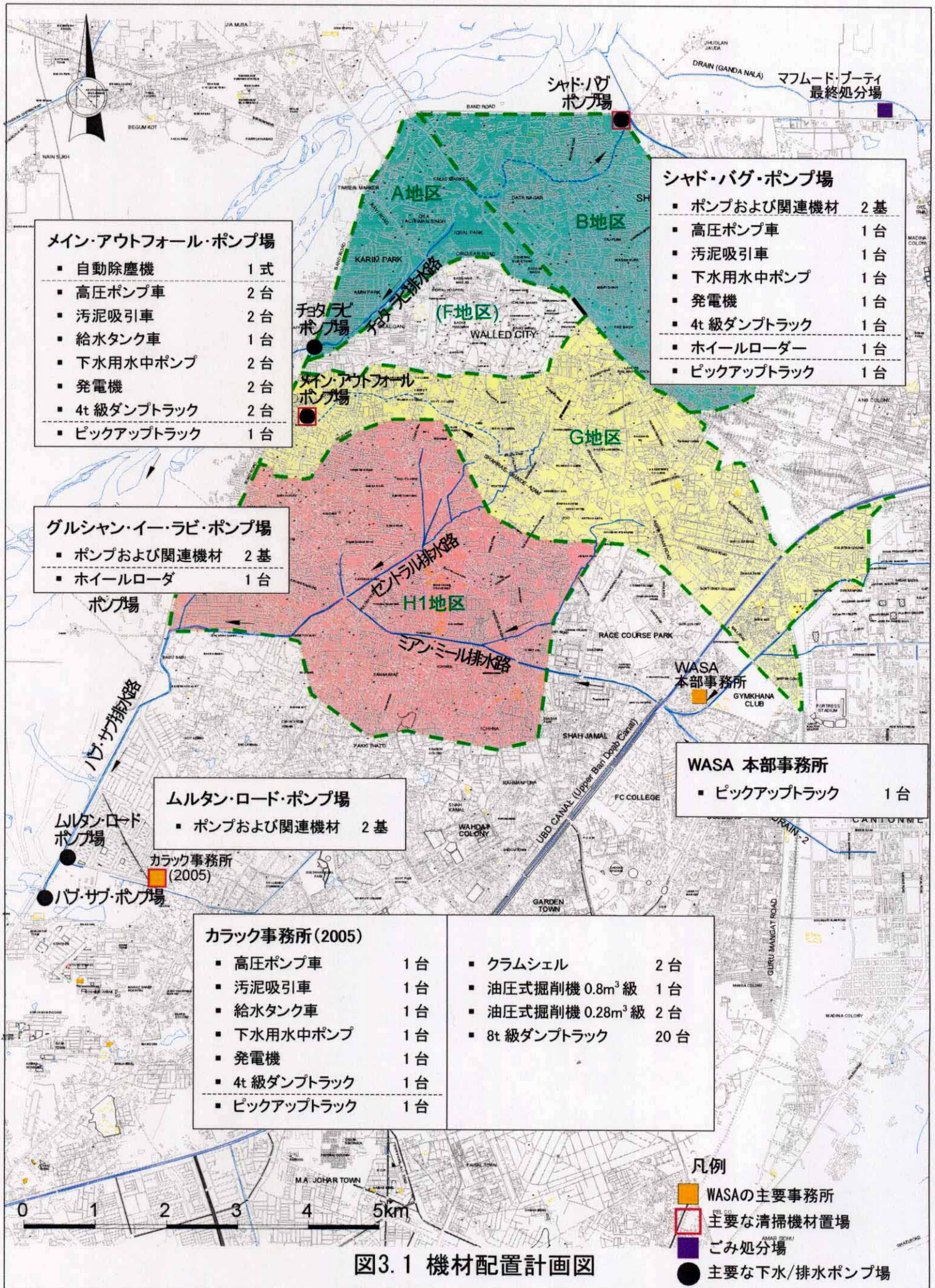


図3.1 機材配置計画図

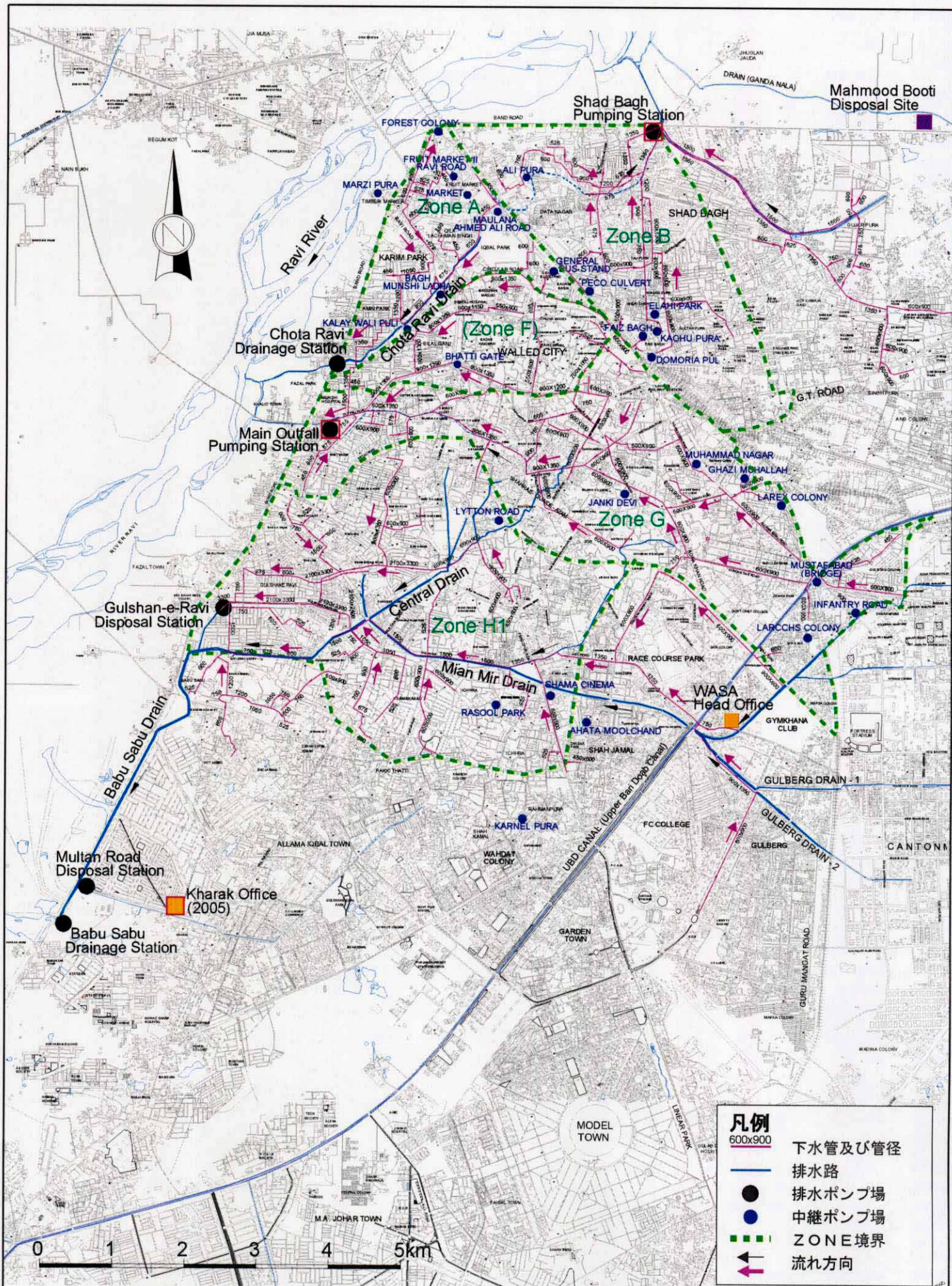


図3.2 下水管路、排水路およびポンプ場位置図

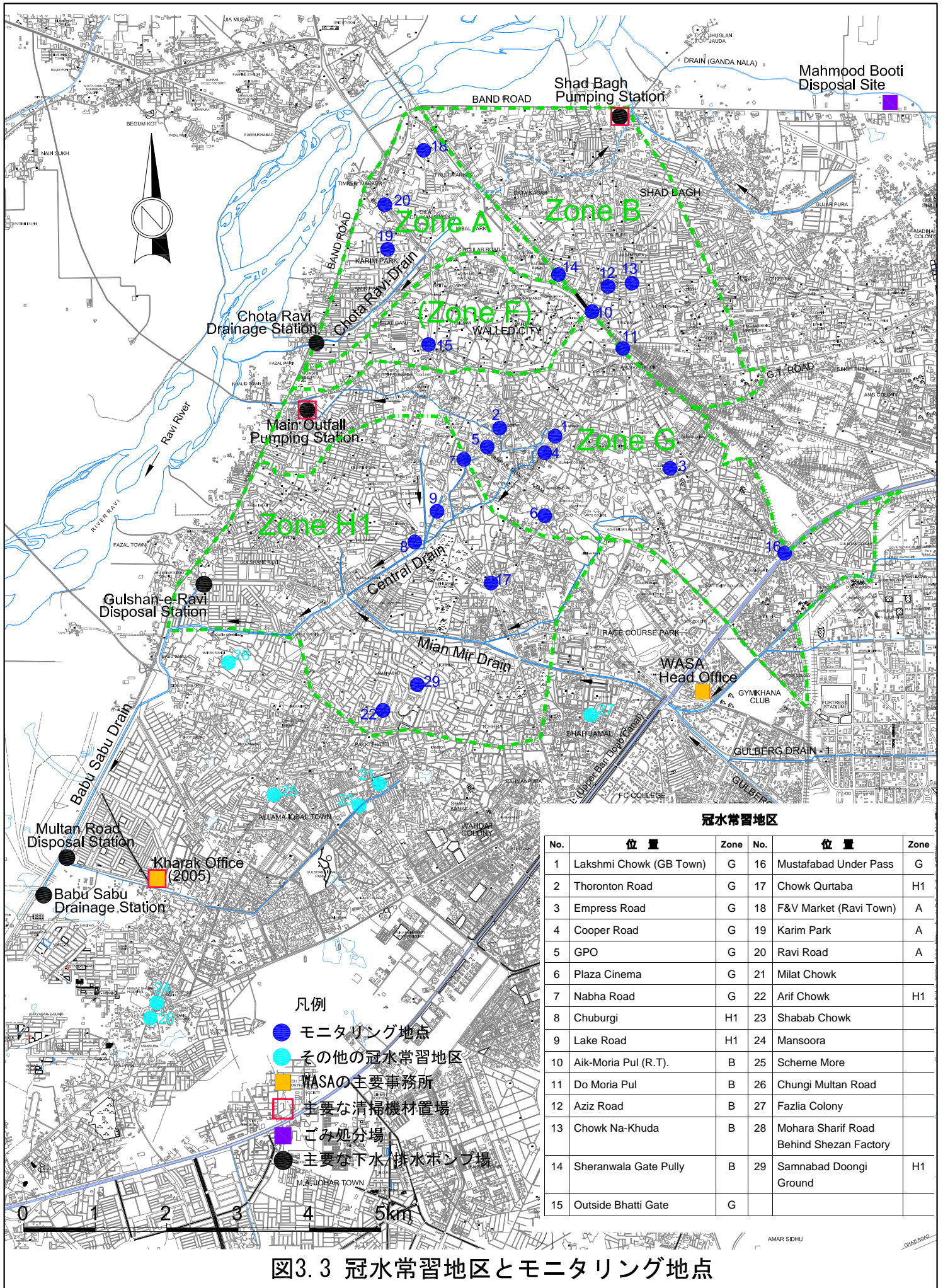


図3.3 冠水常習地区とモニタリング地点

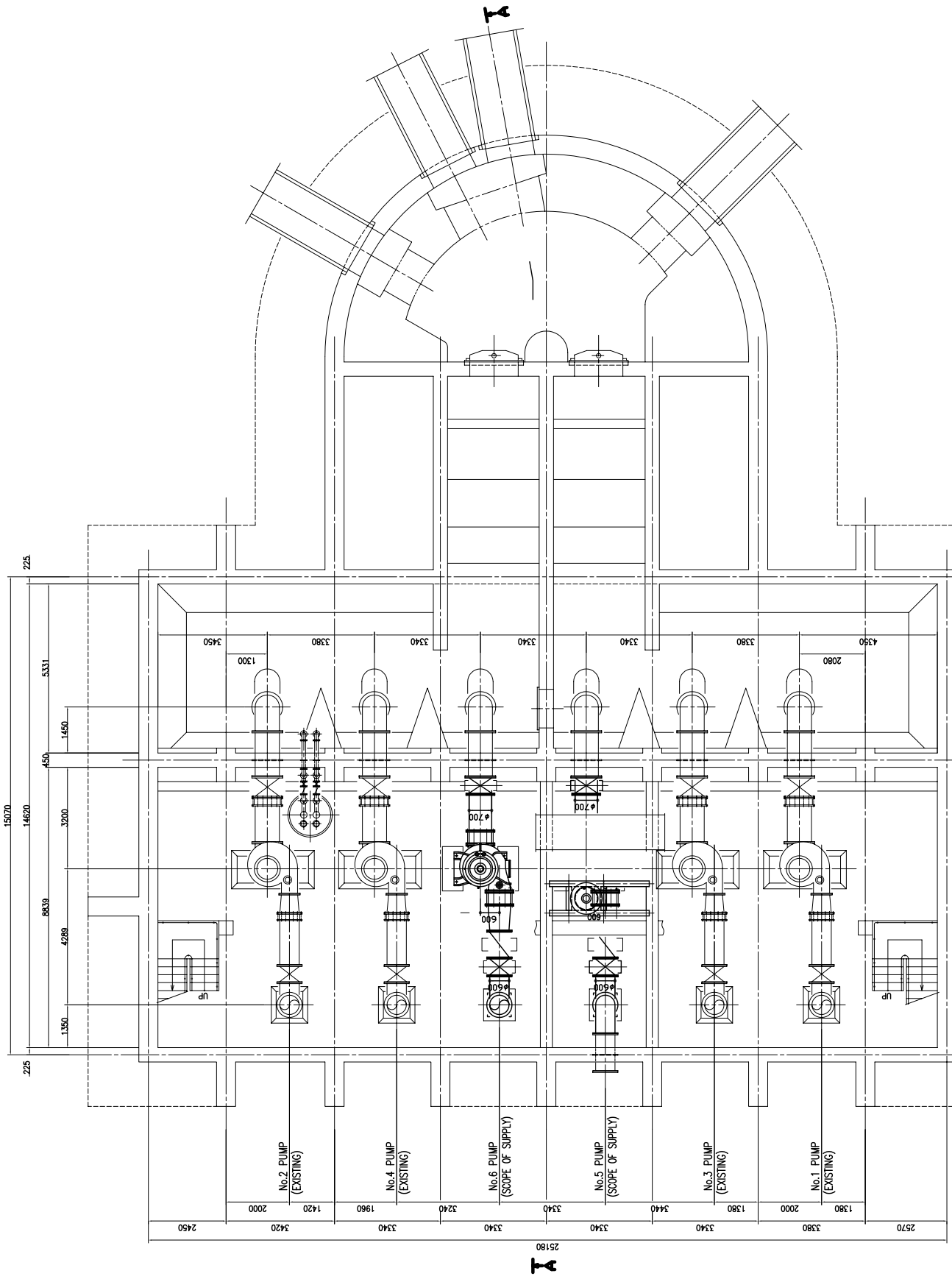


図 3.4 Shad Bagh ポンプ場平面図 (1/2)

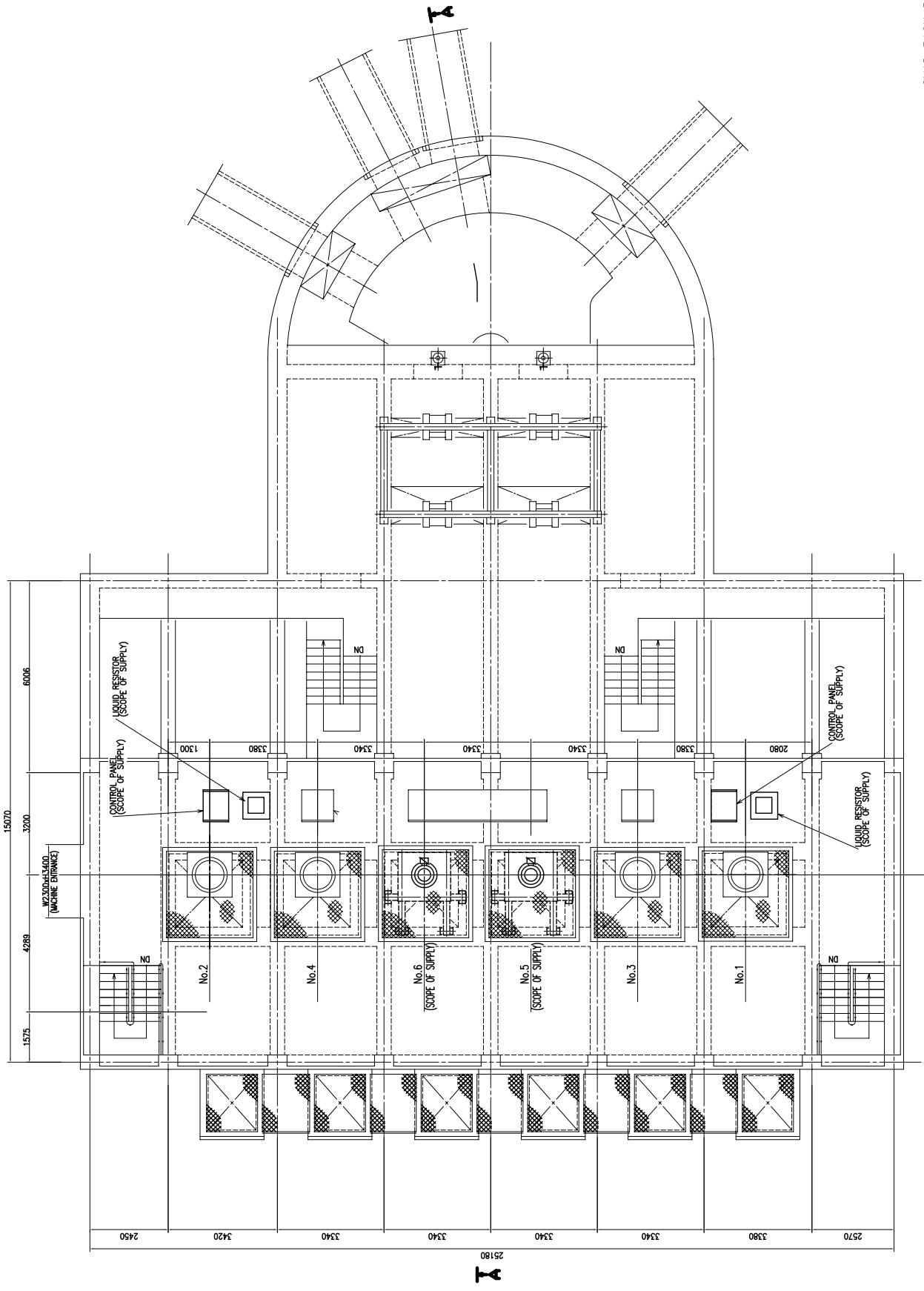
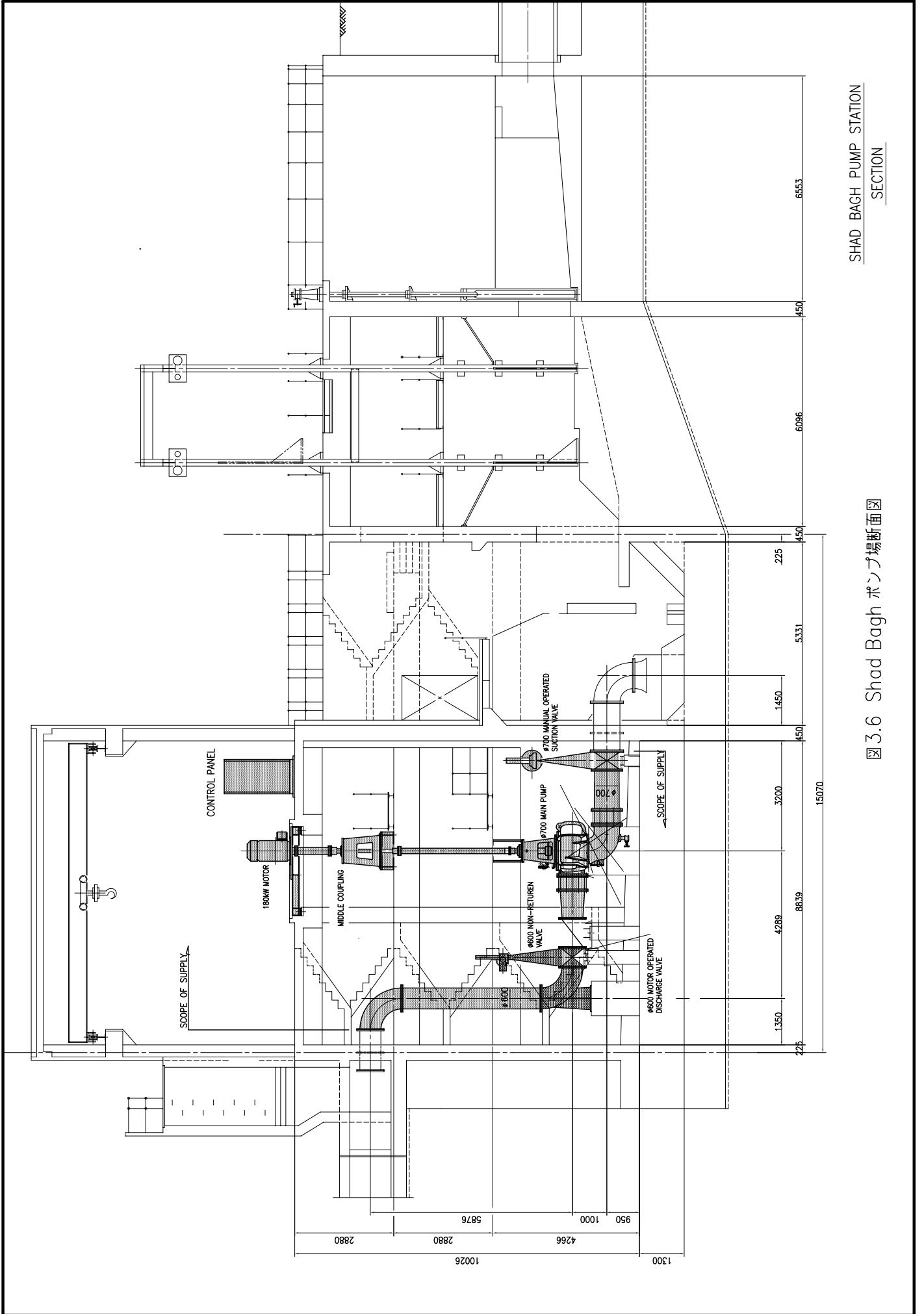
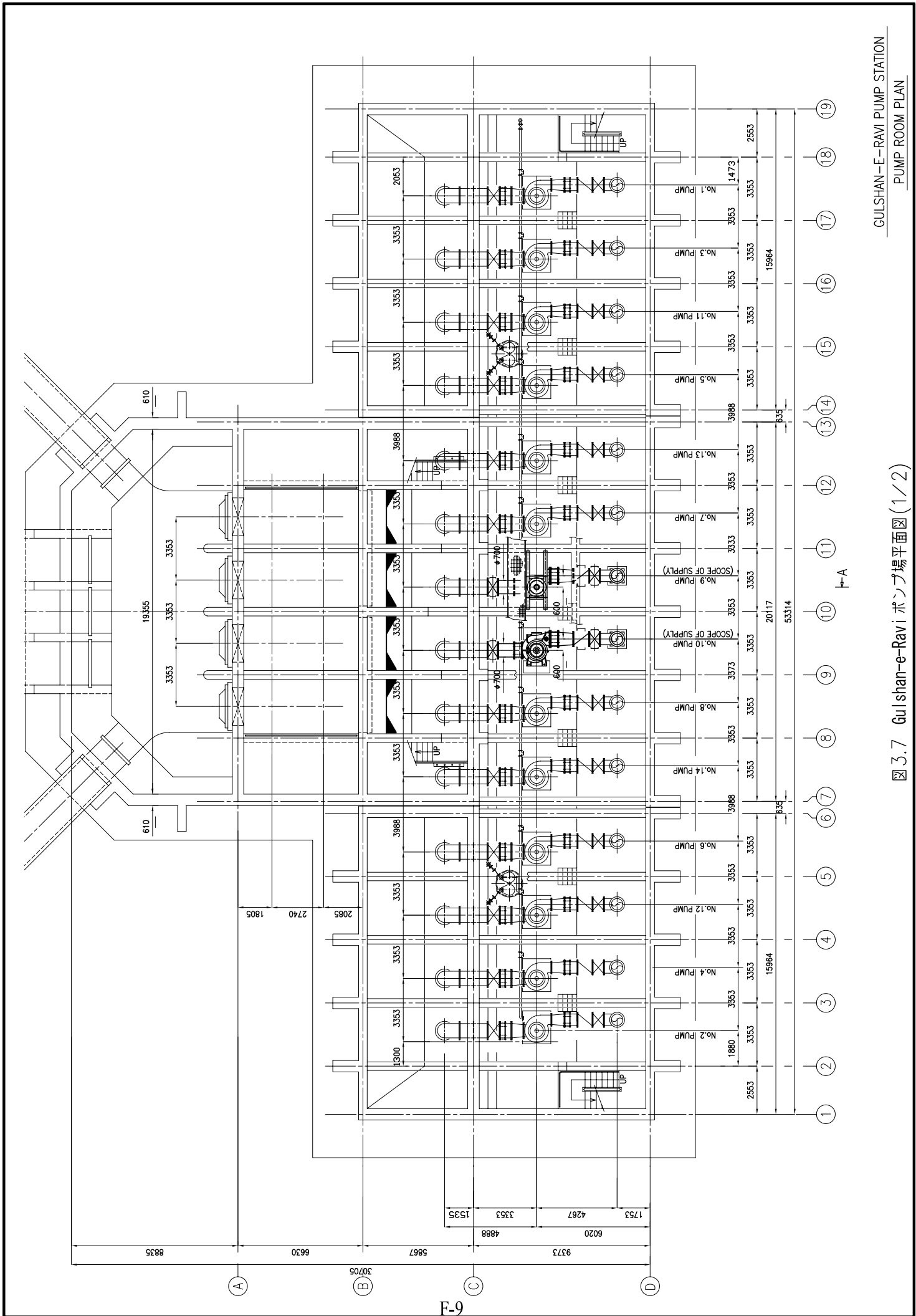


図 3.5 Shad Bagh ポンプ場平面図 (2/2)



SHAD BAGH PUMP STATION
SECTION

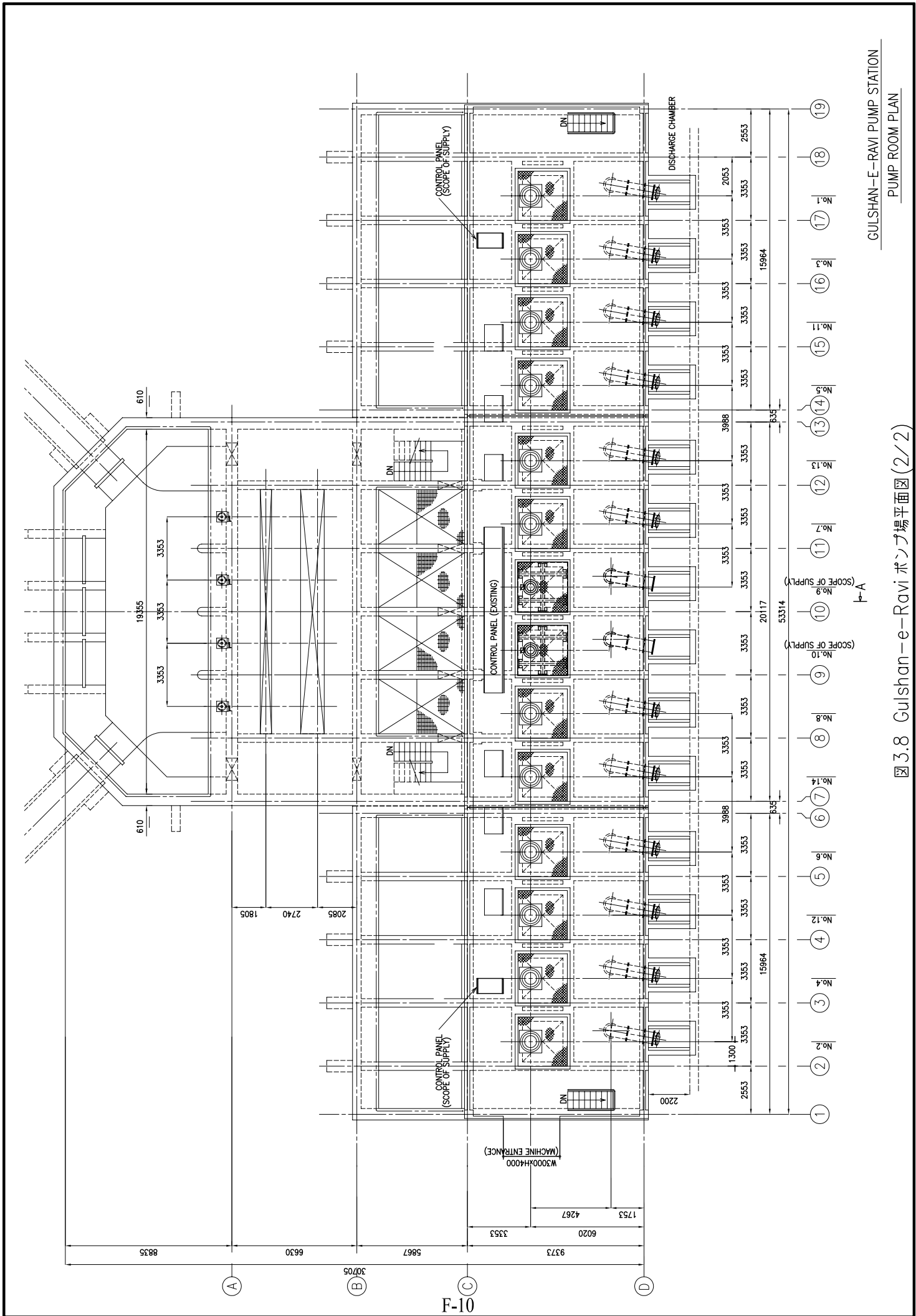
図 3.6 Shad Bagh ポンプ場断面図



F-9

図 3.7 Gulshan-e-Ravi ポンプ場平面図(1/2)

図 3.8 Gulshan-e-Ravi ポンプ場平面図(2/2)



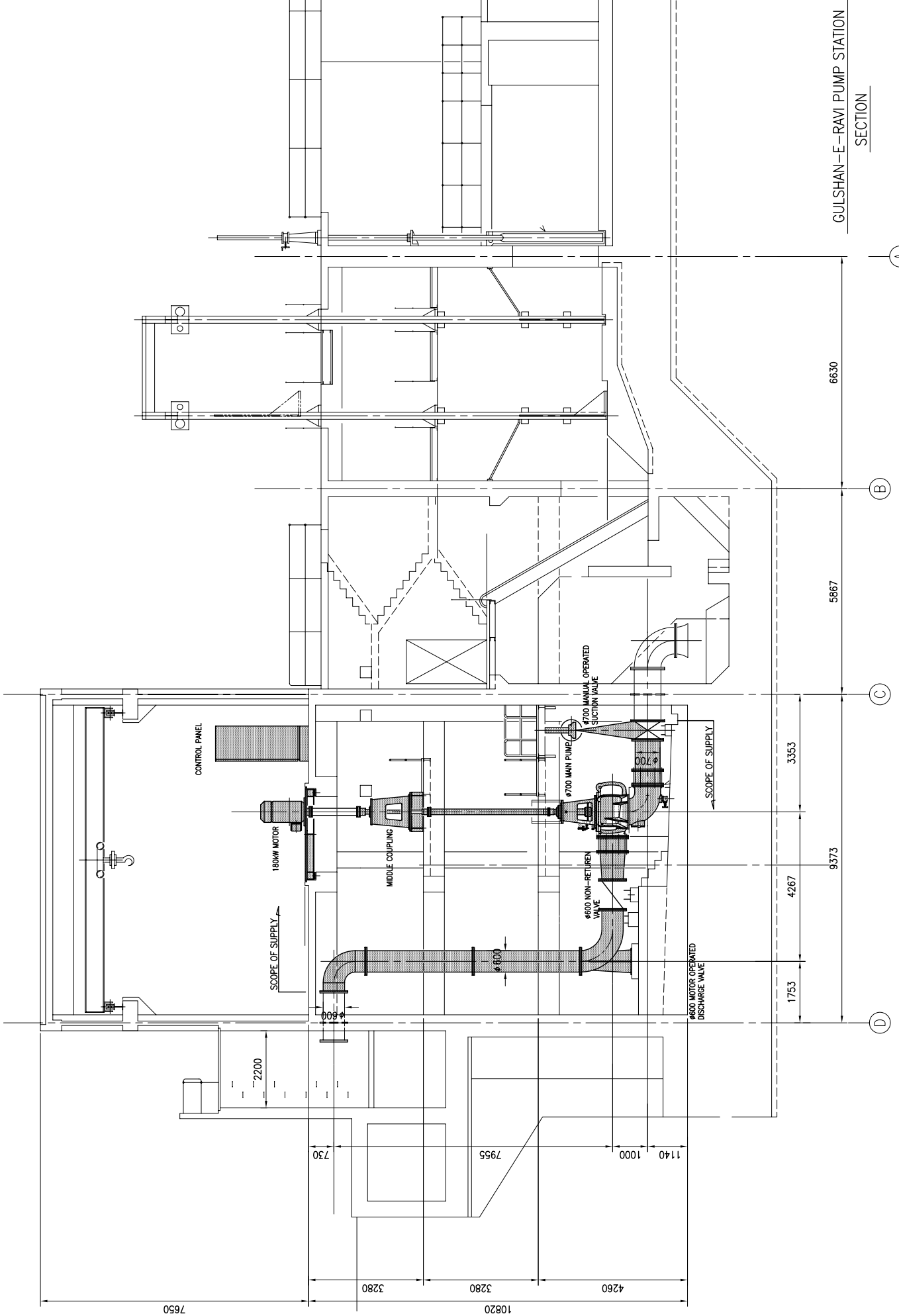


図 3.9 Gulshan-e-Ravi ポンプ場断面図

GULSHAN-E-RABI PUMP STATION
SECTION

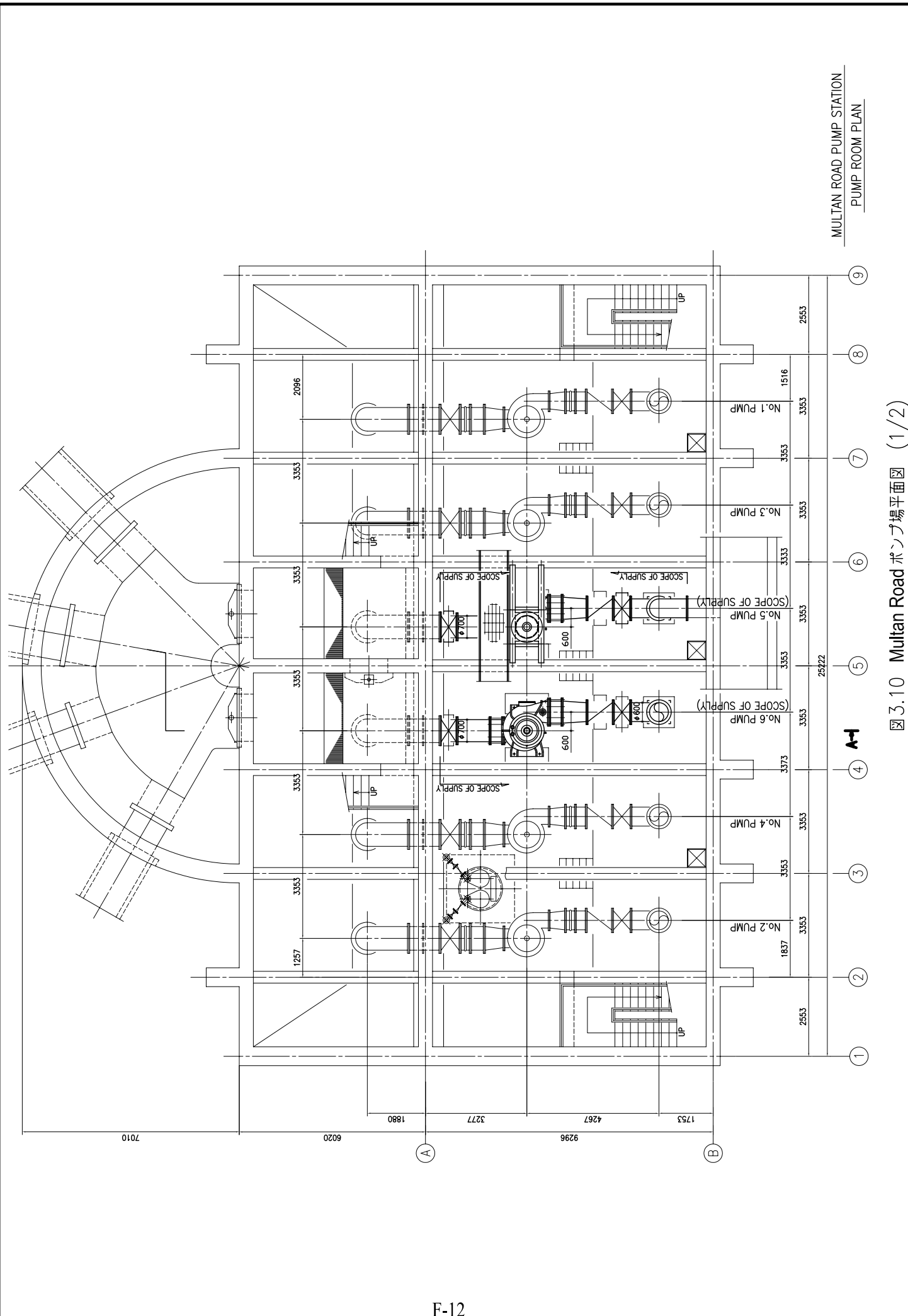


図 3.10 Multan Road ポンプ場平面図 (1/2)

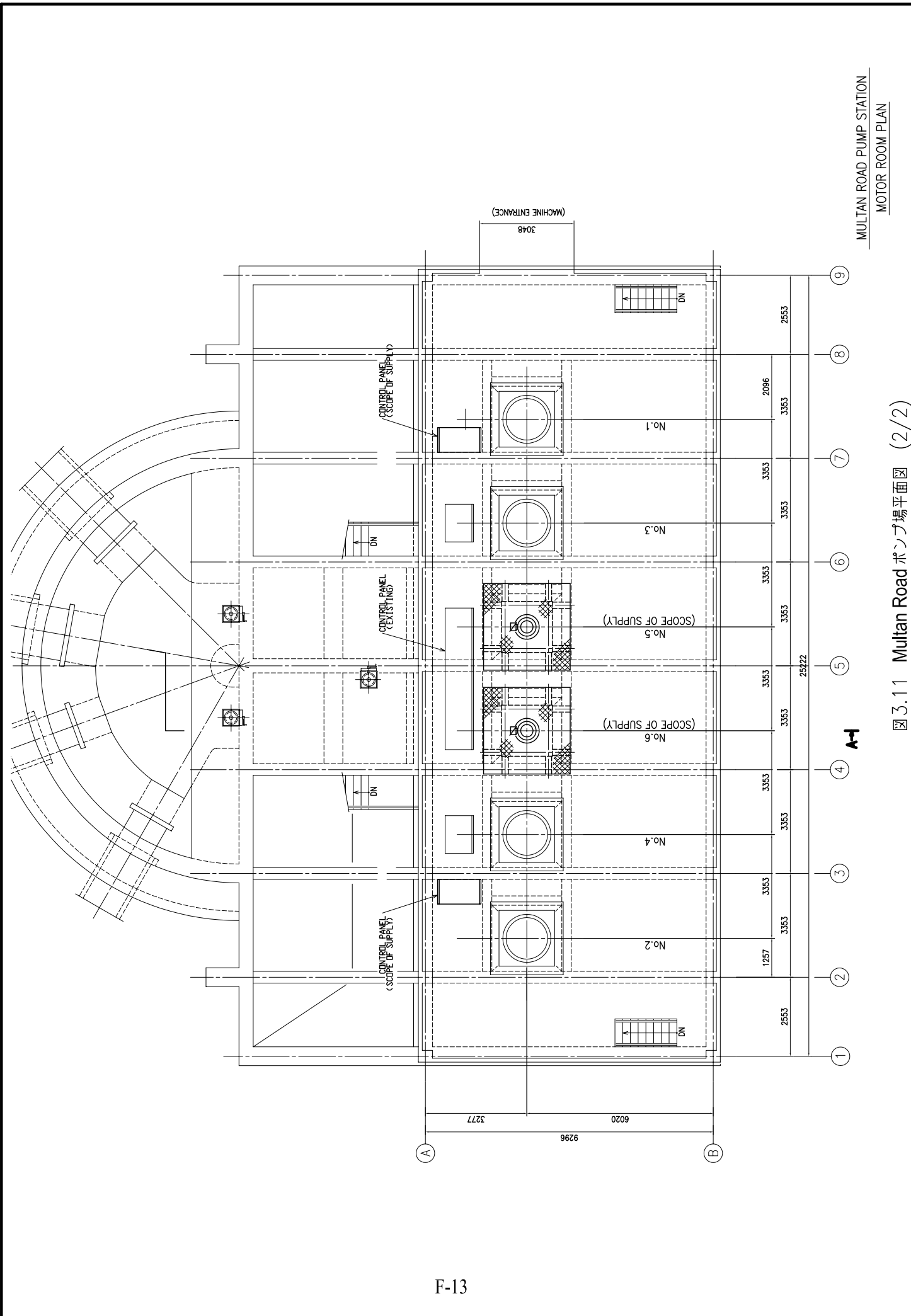


図 3.1.1 Multan Road ポンプ場平面図 (2/2)

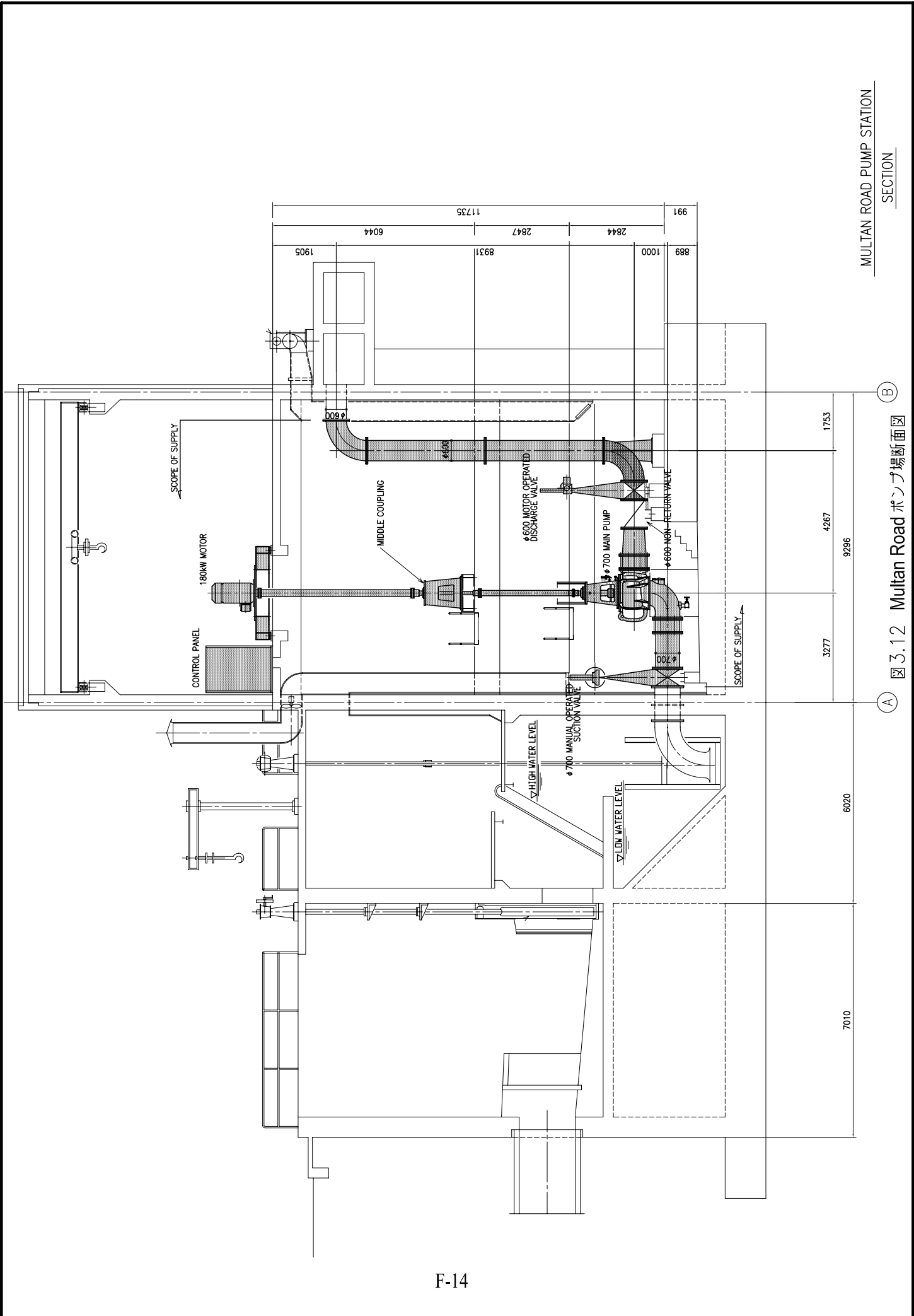


図 3.12 Multan Road ポンプ場断面図

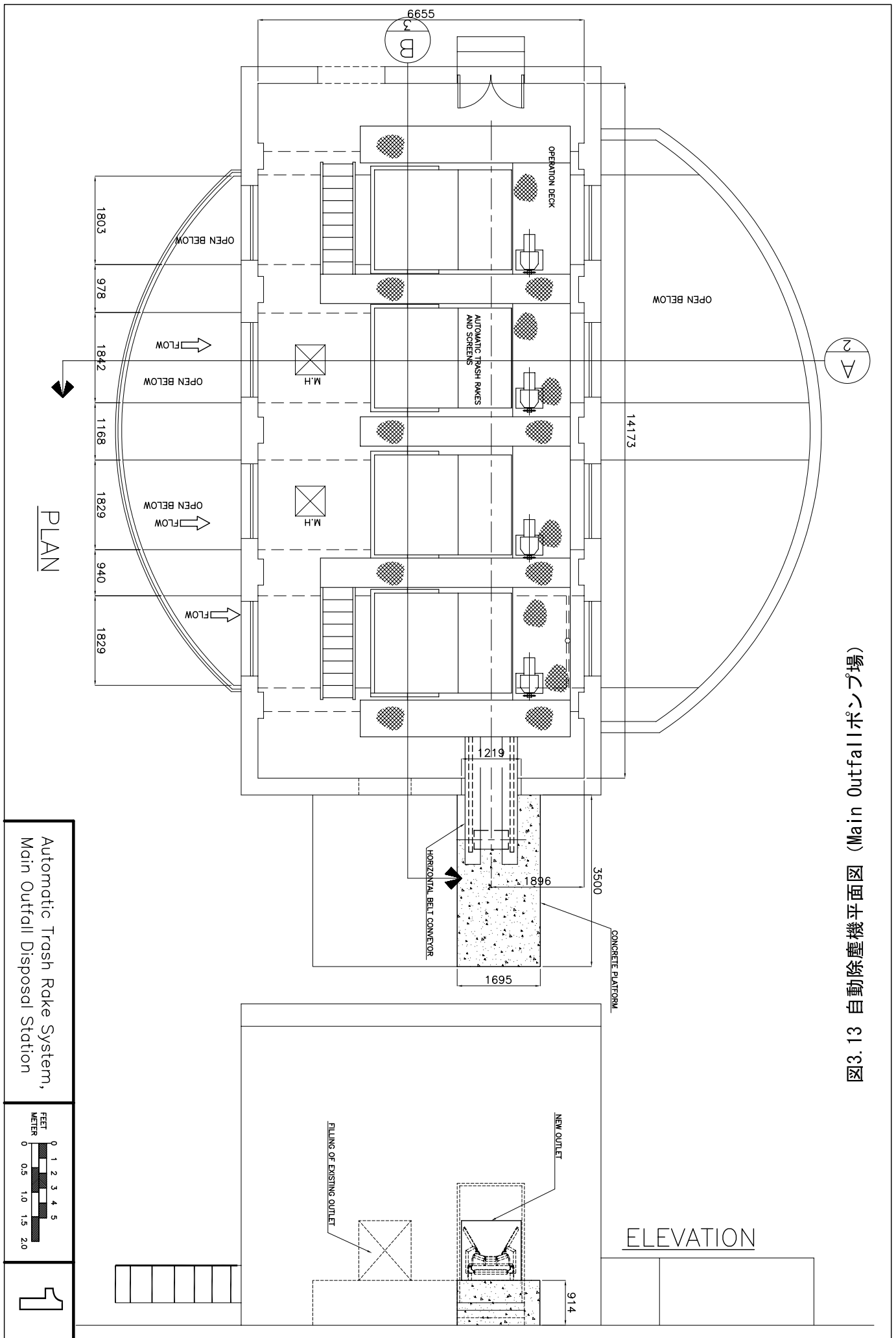
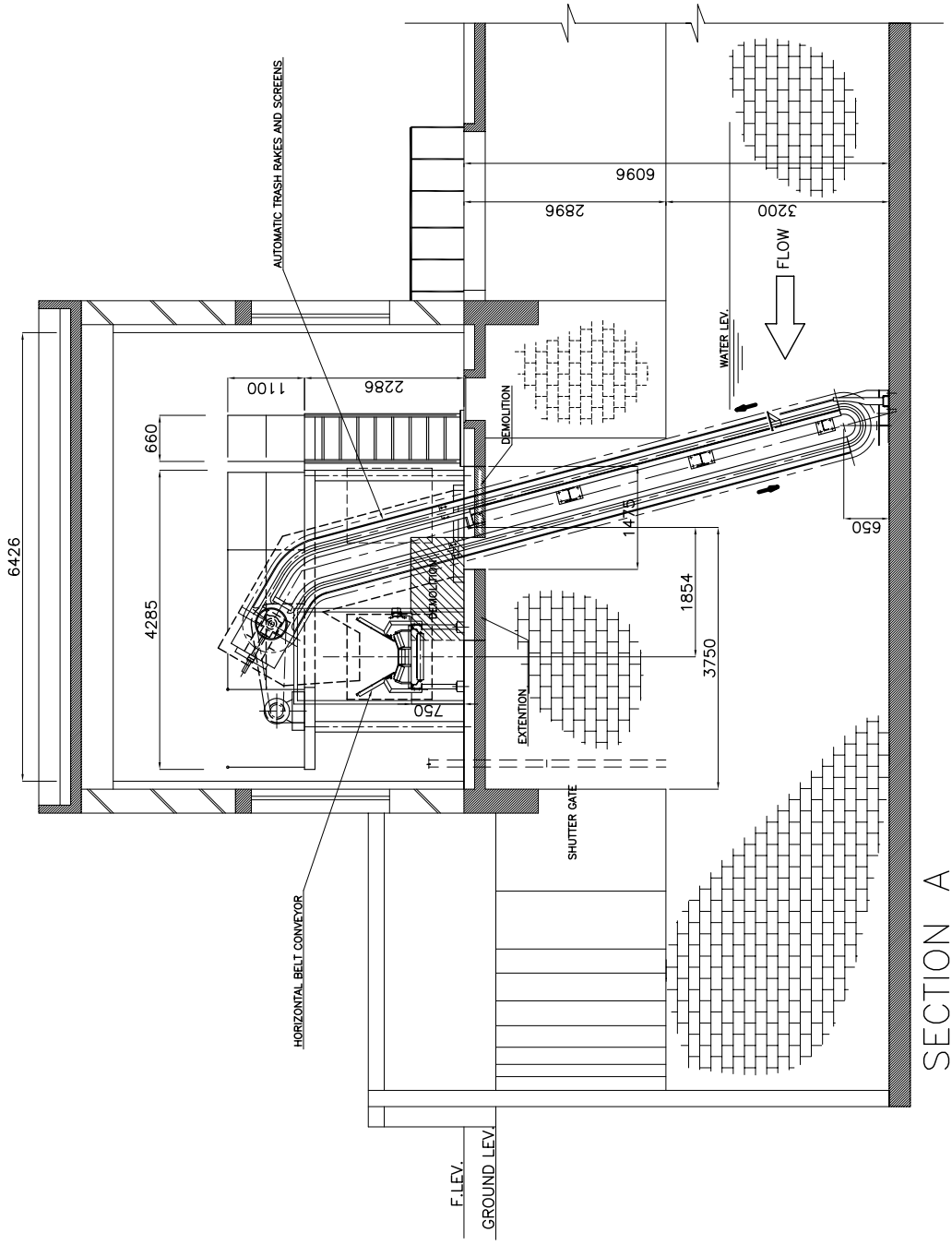
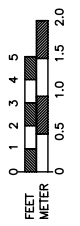


図3.13 自動除塵機平面図 (Main Outfallポンプ場)

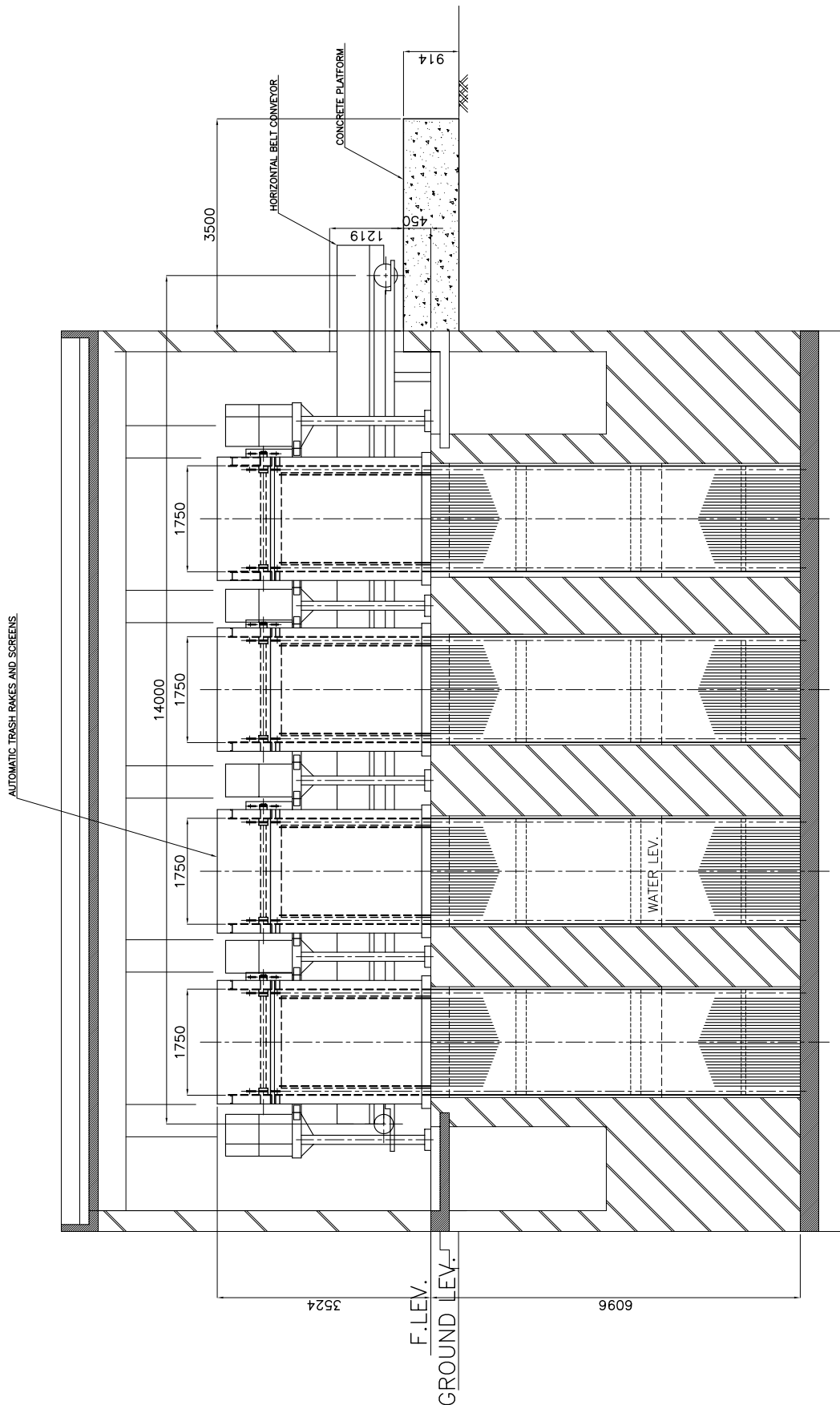


2



Automatic Trash Rake System,
Main Outfall Disposal Station

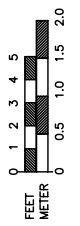
図3.14 自動除塵機断面図 (Main Outfallポンプ場)



SECTION B

Automatic Trash Rake System,
Main Outfall Disposal Station

図3.15 自動除塵機正面図 (Main Outfallポンプ場)



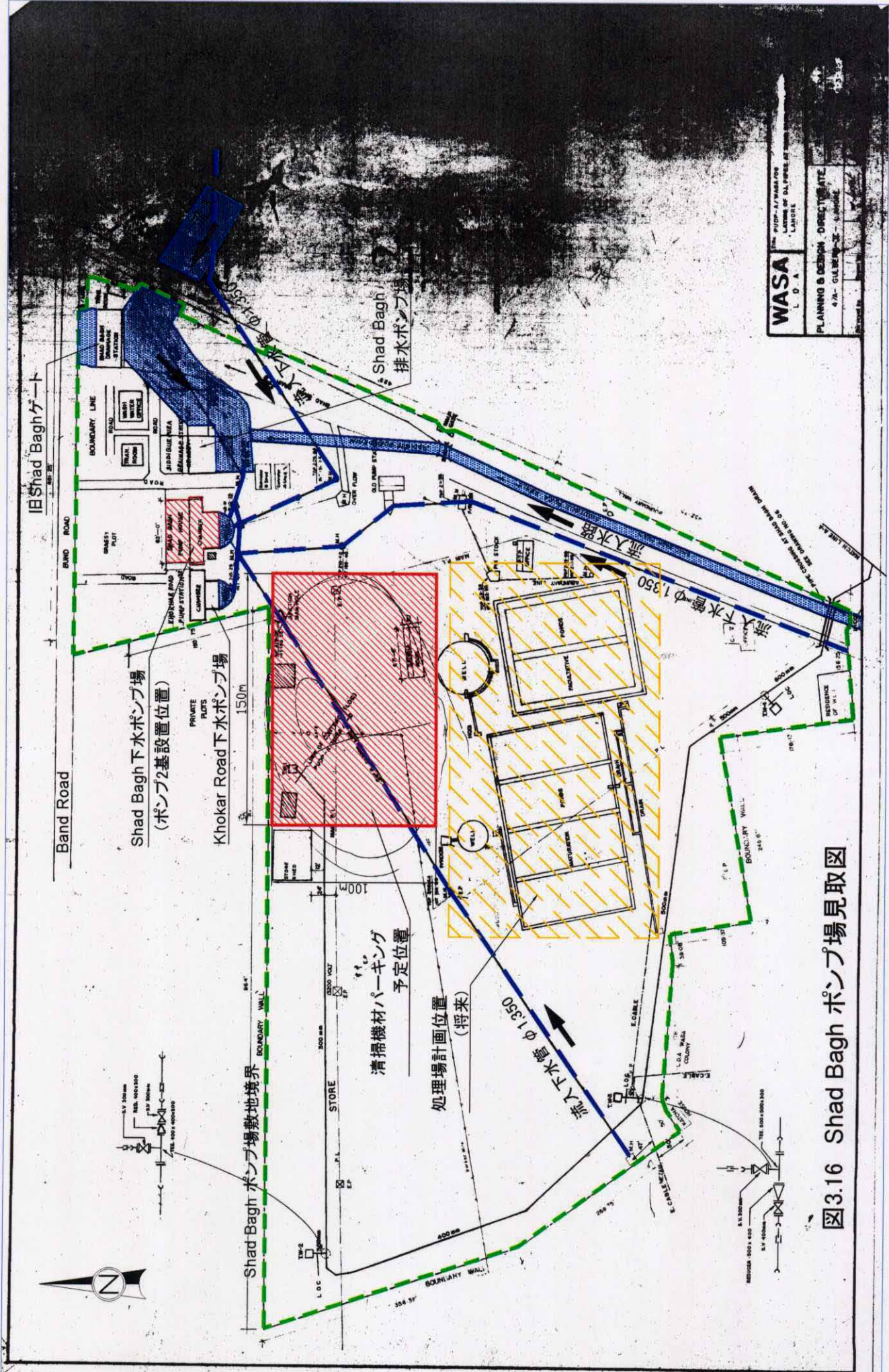


図3.16 Shad Bagh ポンプ場見取図

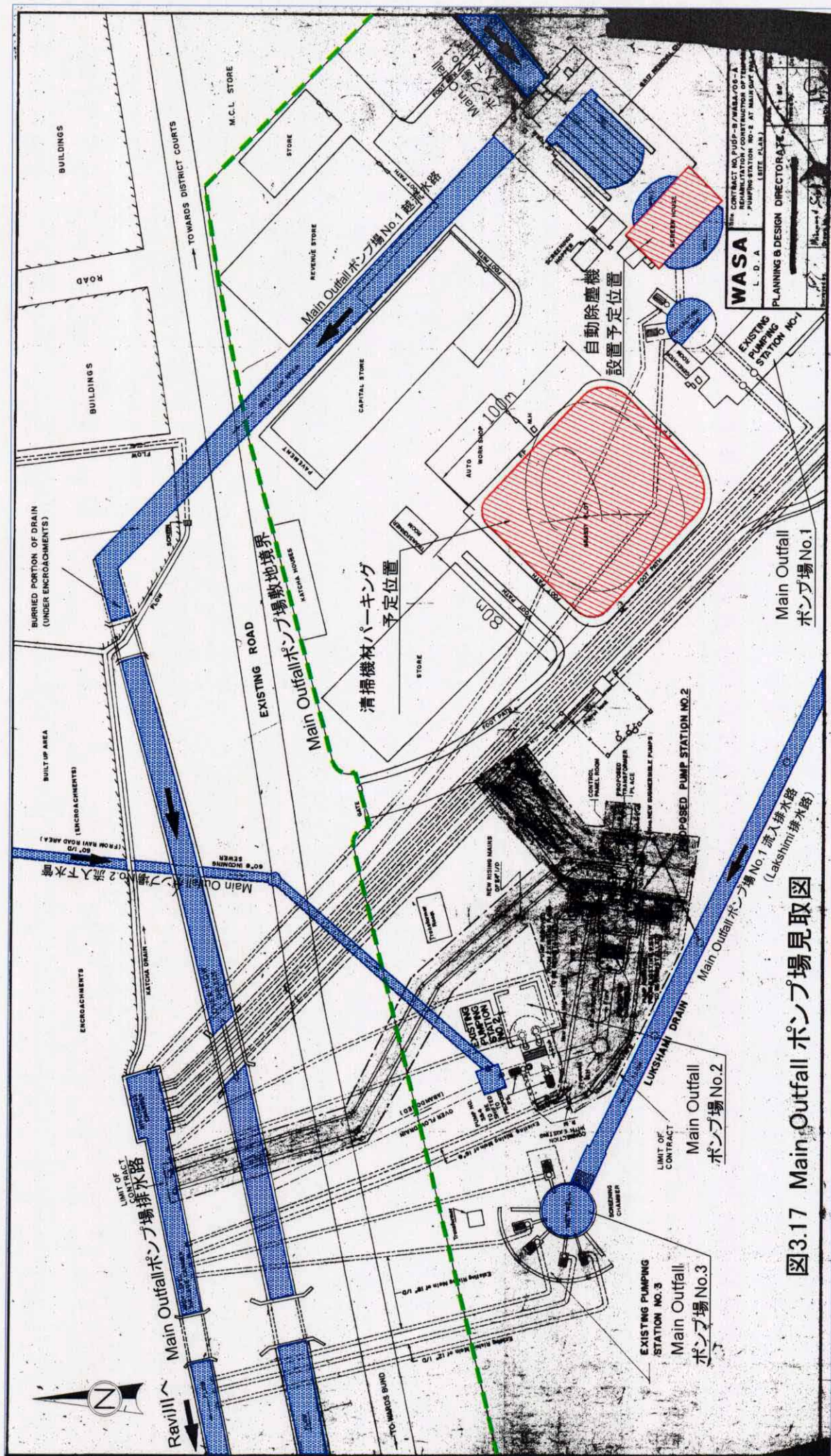


図3.17 Main Outfall ポンプ場見取図

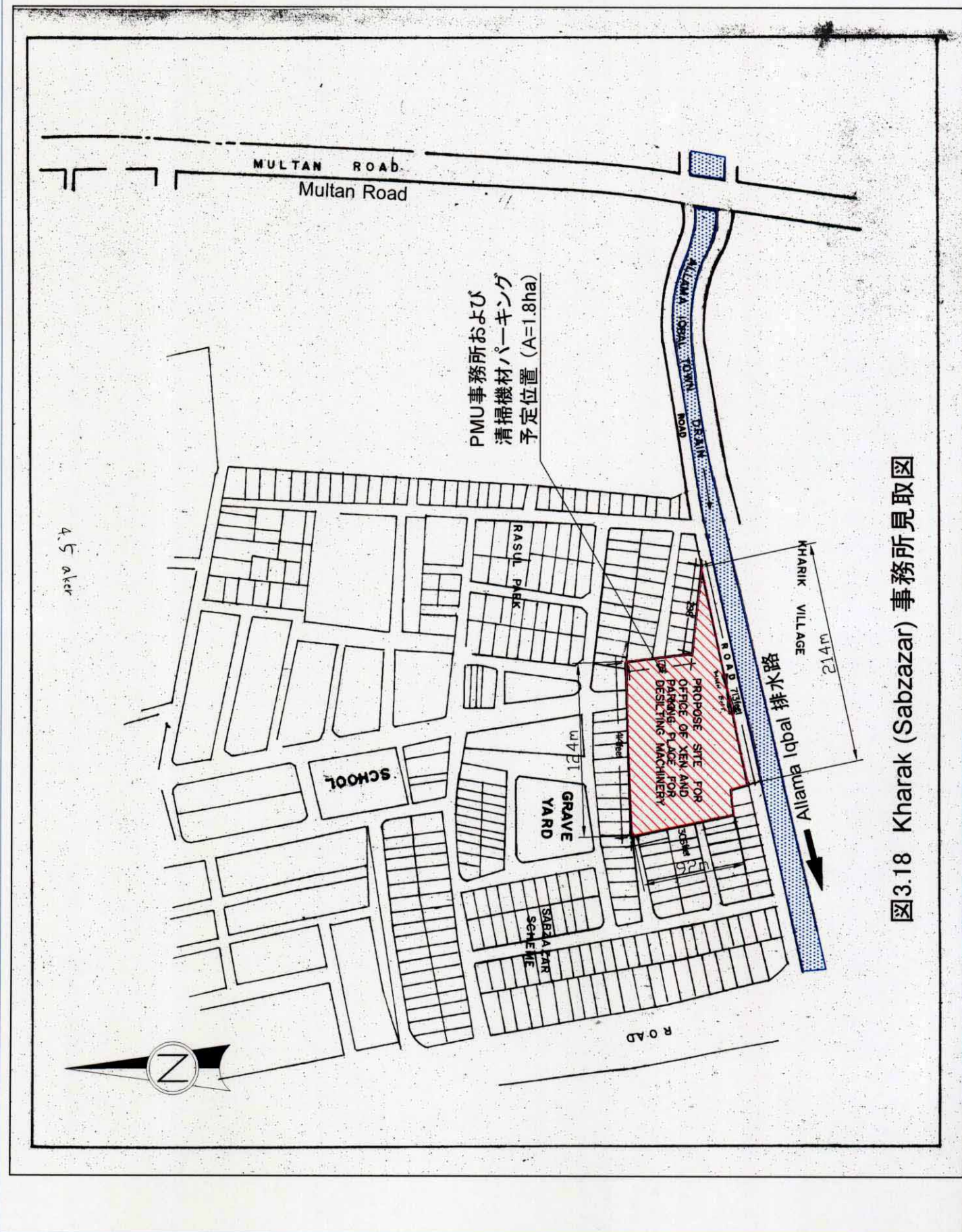


図3.18 Kharak (Sabzazar) 事務所見取図

Demarcation of Pump Installation Work

Following work items relevant to pump installation will be demarcated between Pakistani Side (WASA) and Japanese side (Grant Aid).

Work Item	To be covered by
(1) Preparation of additional transformer for new pumps	WASA
(2) Any other relevant arrangement and procurement for electric source	WASA
(3) Wiring to Electric Panel from Transformer	WASA
(4) Wiring to Electric Panel from Pump	Grant Aid
(5) Installation of Pumps, Electric Panels, Valves and Pipes.	Grant Aid

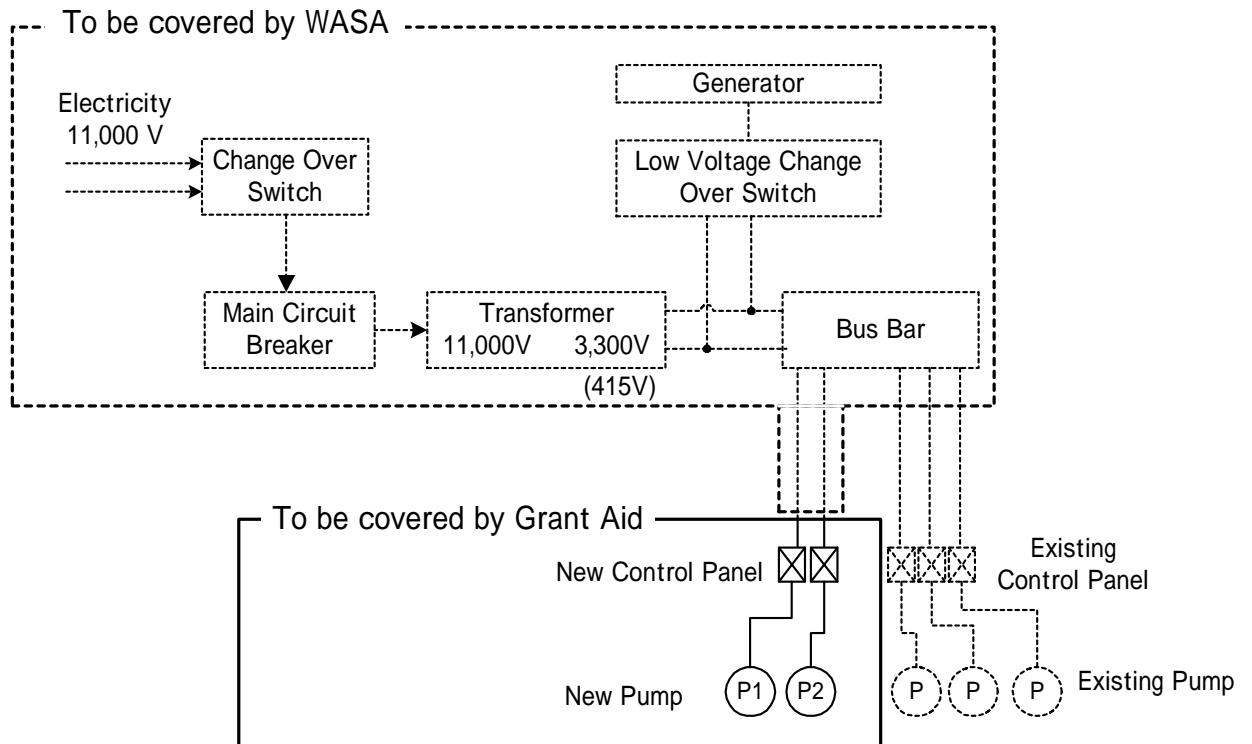


図 3.19 ポンプ据付区分図

WASA - LDA

REVENUE AND EXPENSE STATEMENT - (10 YEARS AT A GLANCE)

(Rupees in million)

	2000/01 (Audited)	2001/02	2002/03 (Actual)	2003/04	2004/05	2005/06 (Projected)	2006/07	2007/08	2008/09	2009/10
--	----------------------	---------	---------------------	---------	---------	------------------------	---------	---------	---------	---------

⇨ WATER										
- Sales	599	674	680	737	963	987	1,011	1,036	1,061	1,087
- Connection fee	2	2	2	3	3	3	3	3	3	3
⇨ SEWERAGE										
- Sales	381	432	465	504	661	677	694	711	728	746
- Connection fee	6	3	6	5	3	3	3	3	3	3
- Property tax	235	237	305	332	330	347	364	382	401	421
⇨ AQUIFER FEE	28	25	14	15	-	-	-	-	-	-
⇨ OTHER	22	15	15	15	15	15	15	15	15	15
GROSS OPERATING REVENUE (1)	1,273	1,388	1,487	1,611	1,975	2,031	2,089	2,149	2,211	2,275

OPERATING EXPENSES:

⇨ Salaries and wages	271	344	381	434	521	557	596	638	683	731
⇨ Repairs and Maintenance	121	100	185	225	252	277	305	335	369	406
⇨ Fuel and Power	695	664	838	912	1,054	1,107	1,162	1,220	1,281	1,345
⇨ Other Expenses	61	70	35	48	56	62	65	68	71	75
⇨ Depreciation	1,149	1,178	1,439	1,619	1,883	2,003	2,128	2,262	2,404	2,557
⇨ Allowances for Uncollectibles	177	168	194	204	214	225	236	248	260	273
	69	85	88	90	97	100	102	105	107	110
TOTAL OPERATING EXPENSES (2)	1,394	1,431	1,721	1,913	2,194	2,327	2,466	2,614	2,772	2,940

INCOME/(LOSS) BEFORE INTEREST INCOME & EXP (3=1-2)	(121)	(43)	(234)	(302)	(219)	(296)	(377)	(465)	(561)	(665)
ADD: INTEREST INCOME (4)	12	5	10	9	8	7	6	5	5	5
OTHER INCOME (5)	5	5	9	20	20	20	20	20	20	20
INCOME / (LOSS) BEFORE FIN. EXP. 6=(3+4+5)	(104)	(33)	(215)	(273)	(191)	(269)	(351)	(440)	(536)	(640)
FINANCIAL EXPENSES (7)	392	445	515	540	577	606	636	668	701	736
INCOME / (LOSS) 8=(6-7)	(496)	(478)	(730)	(813)	(768)	(875)	(987)	(1,108)	(1,237)	(1,376)

* 40% Increase in Water & Sewerage Rates w.e.f. 01-05-2004.

Proj-10Yrs.

図 3.20 WASA の財務状況