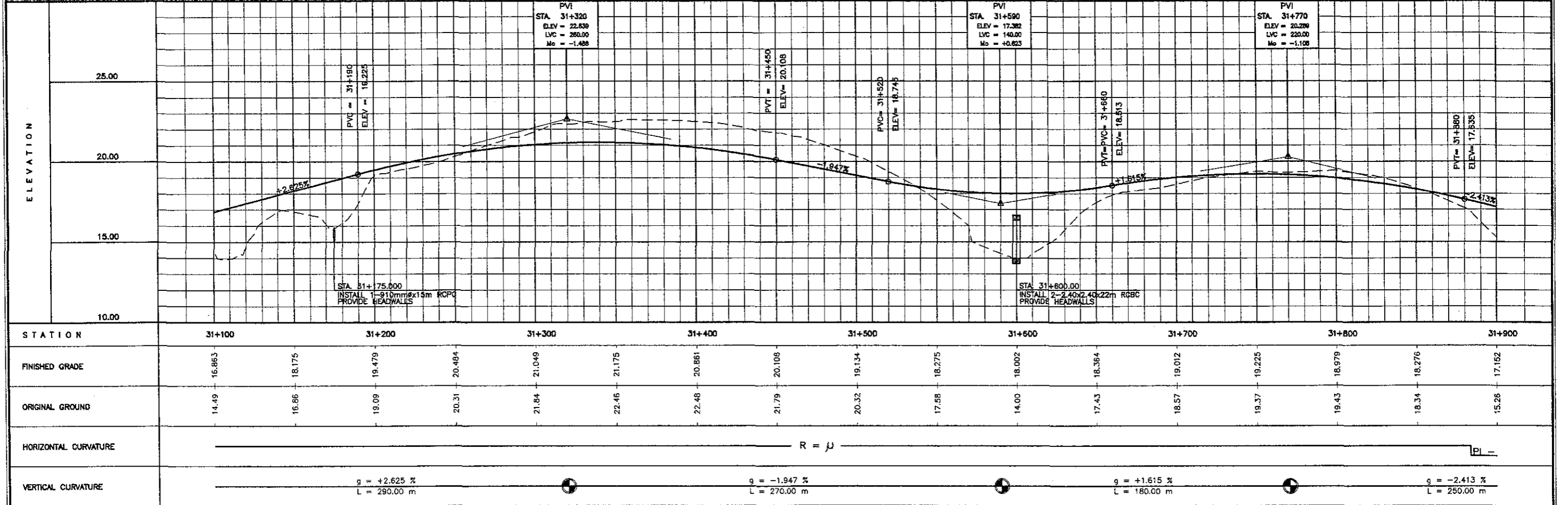


THE STUDY ON ROAD NETWORK IMPROVEMENT
FOR DEVELOPMENT OF REGIONAL GROWTH CENTERS

SCALE :
HOR. 1:2500
VER. 1:250

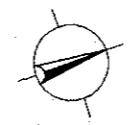
BACOLOD SUGAR ROAD (North)
PLAN AND PROFILE
STA. 31+100 - STA. 31+900

DRAWING NO.
R-40



ELEMENTS OF CURVES

PI NO.	STATION	COORDINATES		I	R	T	Lc	Es	V(kph)
		NORTHING	EASTING						
22	32+002.845	1,204,265.773	509,081.001	9° 09' 14.98"	1,500.00	120.083	239.655	4.799	80
23	32+496.023	1,204,742.329	509,209.933	15° 51' 12.10"	1,500.00	208.854	415.040	14.470	80

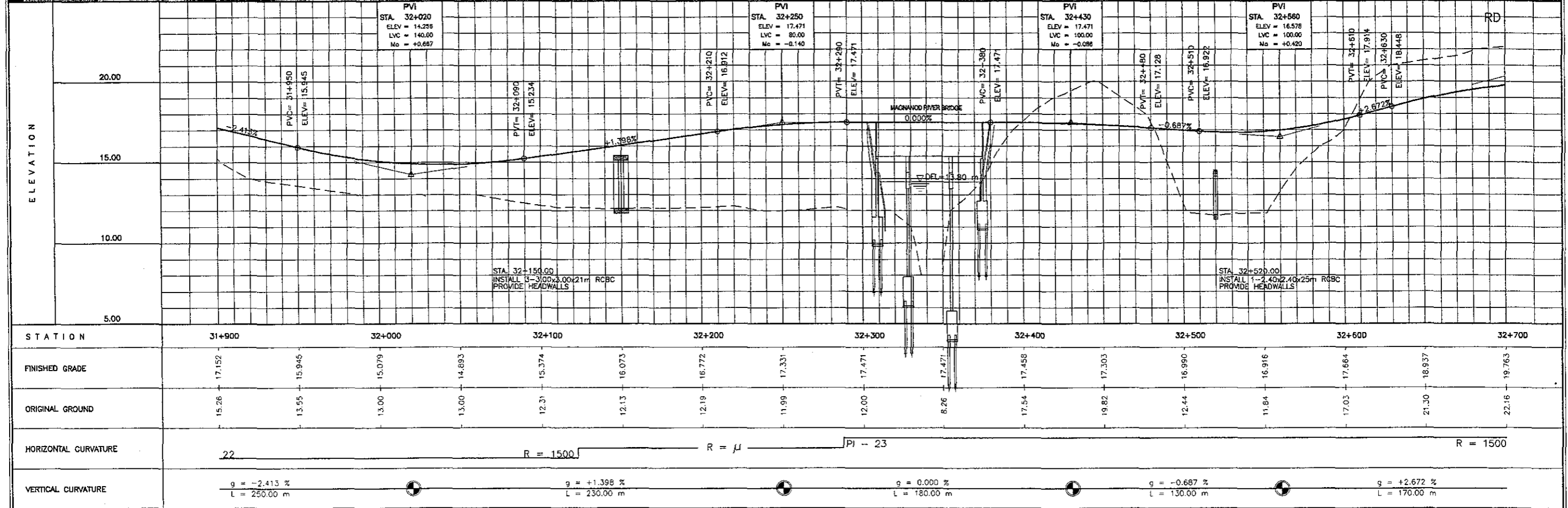


THE STUDY ON ROAD NETWORK IMPROVEMENT
FOR DEVELOPMENT OF REGIONAL GROWTH CENTERS

SCALE :
HOR. 1:2500
VER. 1:250

BACOLOD SUGAR ROAD (North)
PLAN AND PROFILE
STA. 31+900 - STA. 32+700

DRAWING NO.
R-41



ELEMENTS OF CURVES

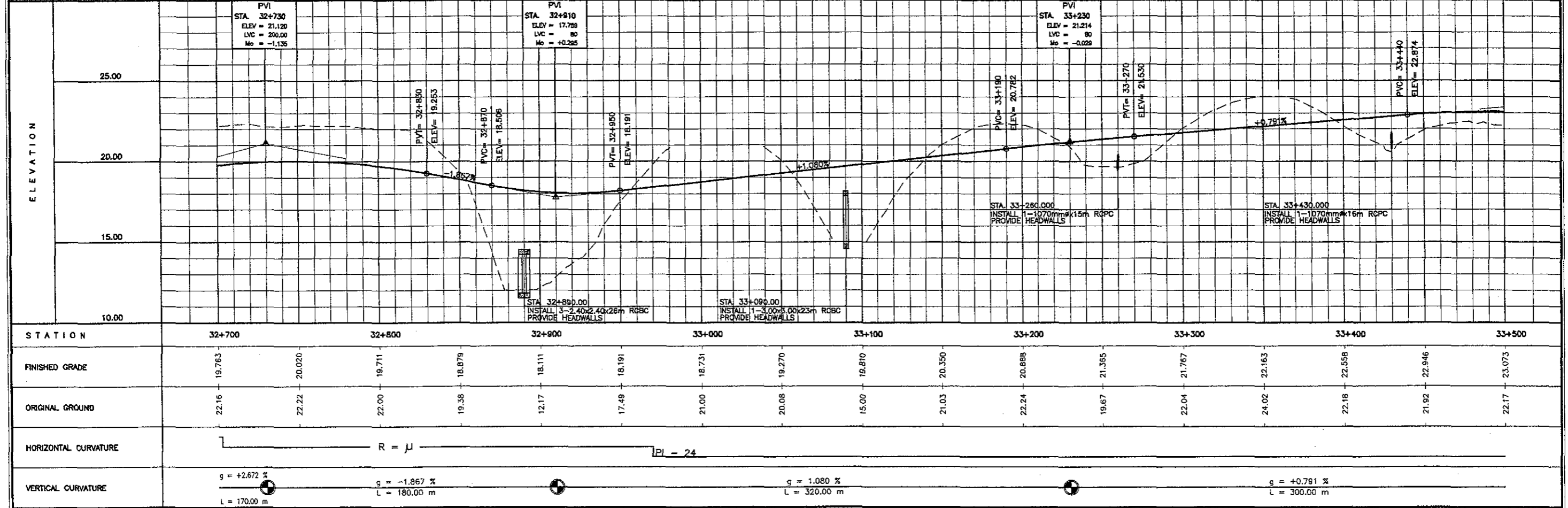
PI NO.	STATION	COORDINATES		I	R	T	Lc	Es	V(kph)
		NORTHING	EASTING						
24	33+302.823	1,205,436.235	509,626.745	36° 53' 8.40"	1,000.00	333.486	643.776	54.141	80

THE STUDY ON ROAD NETWORK IMPROVEMENT
FOR DEVELOPMENT OF REGIONAL GROWTH CENTERS

SCALE :
HOR. 1:2500
VER. 1:250

BACOLOD SUGAR ROAD (North)
PLAN AND PROFILE
STA. 32+700 - STA. 33+500

DRAWING NO.
R-42



ELEMENTS OF CURVES

PI NO.	STATION	COORDINATES		I	R	T	Lc	Es	V(kph)
		NORTHING	EASTING						
25	34+043.640	1,206,196.211	508,553.528	-	-	-	-	-	-

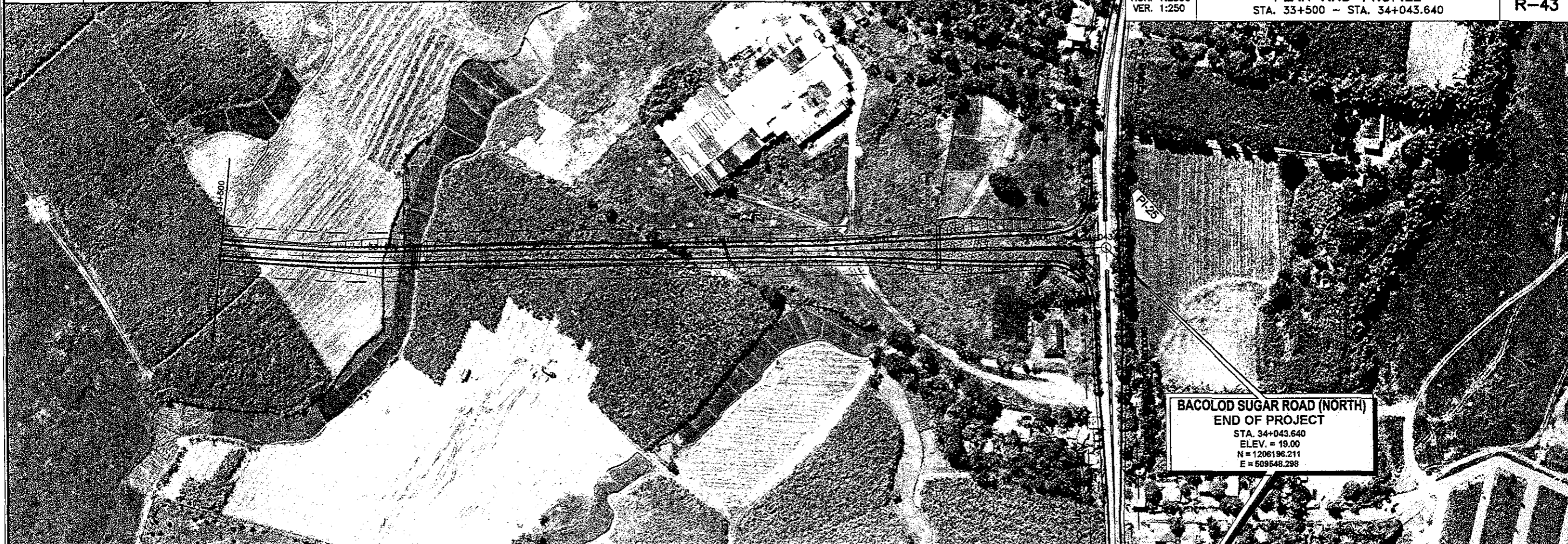
THE STUDY ON ROAD NETWORK IMPROVEMENT
FOR DEVELOPMENT OF REGIONAL GROWTH CENTERS

SCALE :
HOR. 1:2500
VER. 1:250

BACOLOD SUGAR ROAD (North)
PLAN AND PROFILE
STA. 33+500 - STA. 34+043.640

DRAWING NO.

R-43



BACOLOD SUGAR ROAD (NORTH)
END OF PROJECT
STA. 34+043.640
ELEV. = 19.00
N = 1206196.211
E = 509548.298

