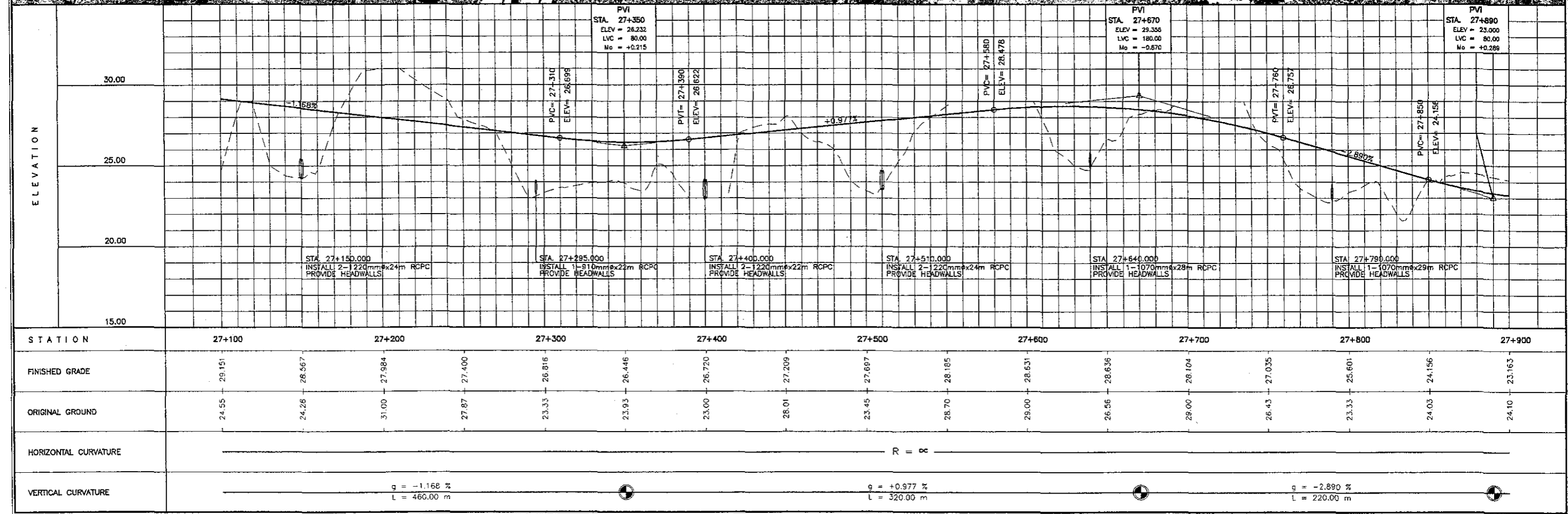


THE STUDY ON ROAD NETWORK IMPROVEMENT
FOR DEVELOPMENT OF REGIONAL GROWTH CENTERS

SCALE :
HOR. 1:2500
VER. 1:250

BACOLOD SUGAR ROAD (North)
PLAN AND PROFILE
STA. 27+100 - STA. 27+900

DRAWING NO.
R-35



ELEMENTS OF CURVES

PI NO.	STATION	COORDINATES		I	R	T	Lc	Es	V(kph)
		NORTHING	EASTING						
18	28+435.670	1,200,873.252	508,058.746	26° 15' 6.44"	1,500.00	349.776	687.270	40.241	80

THE STUDY ON ROAD NETWORK IMPROVEMENT
FOR DEVELOPMENT OF REGIONAL GROWTH CENTERS

SCALE :
HOR. 1:2500
VER. 1:250

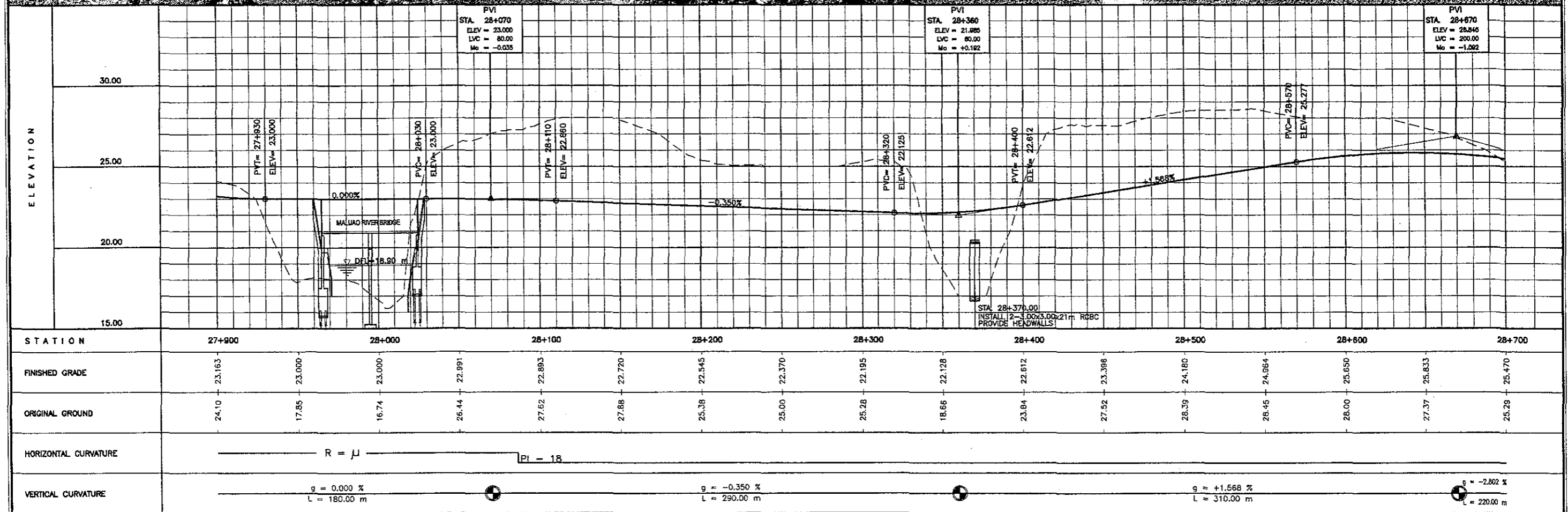
BACOLOD SUGAR ROAD (North)
PLAN AND PROFILE
STA. 27+900 - STA. 28+700

DRAWING NO.
R-36



MALJAO RIVER BRIDGE
STA. 27+992.00
2- SPANS PCOG L = 60.00 M

PI-18



ELEMENTS OF CURVES

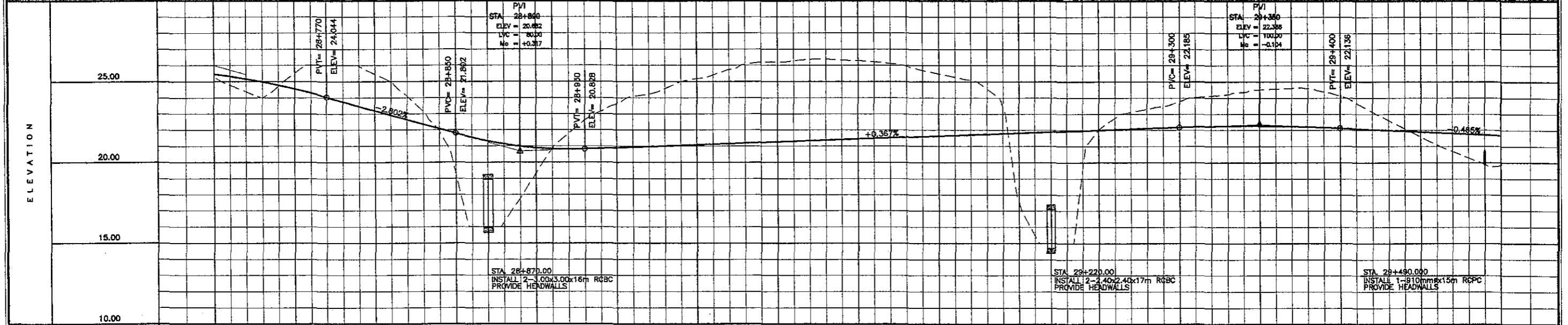
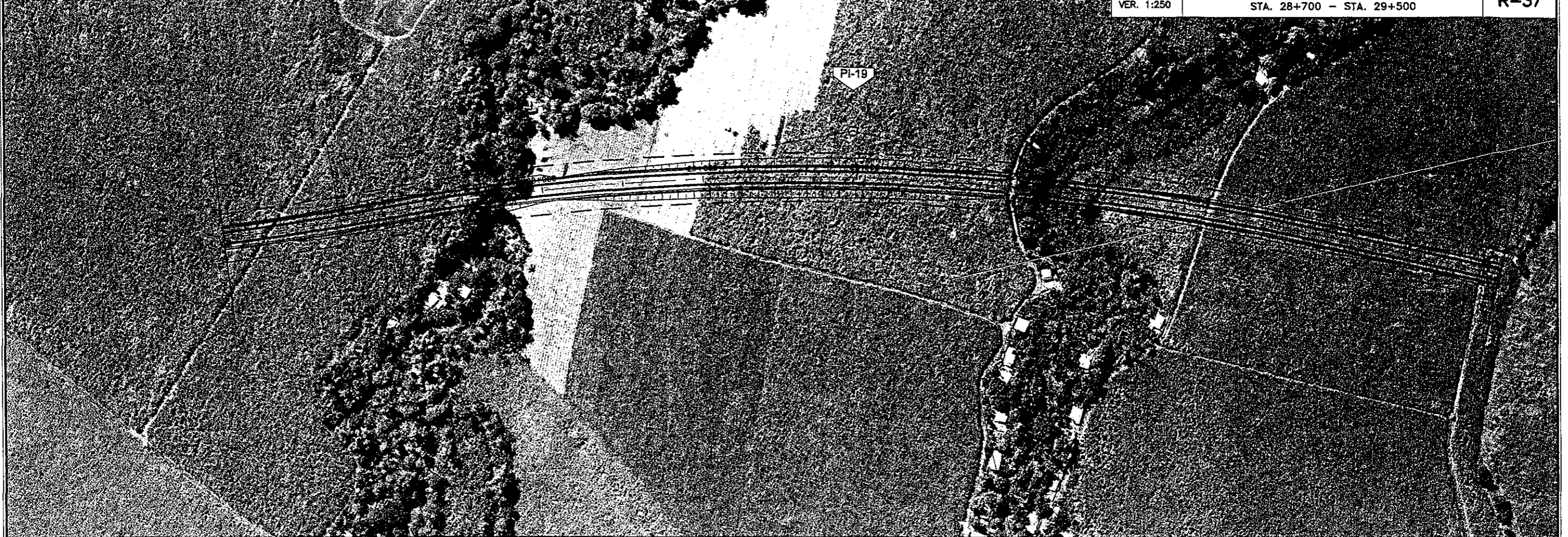
PI NO.	STATION	COORDINATES		I	R	T	Lc	Es	V(kph)
		NORTHING	EASTING						
19	29+096.051	1,201,544.845	508,096.666	22° 13' 36.48"	1,500.00	294.653	581.896	28.666	80

THE STUDY ON ROAD NETWORK IMPROVEMENT
FOR DEVELOPMENT OF REGIONAL GROWTH CENTERS

SCALE :
HOR. 1:2500
VER. 1:250

BACOLOD SUGAR ROAD (North)
PLAN AND PROFILE
STA. 28+700 - STA. 29+500

DRAWING NO.
R-37



STATION	28+700	28+800	28+900	29+000	29+100	29+200	29+300	29+400	29+500
FINISHED GRADE	25.470	23.203	21.802	20.897	21.268	21.452	22.002	22.136	21.670
ORIGINAL GROUND	25.29	25.47	19.26	19.35	23.64	26.28	23.79	24.12	19.93
HORIZONTAL CURVATURE	R = 1500						R = 1500		
VERTICAL CURVATURE	g = -2.802 % L = 220.00 m			g = +0.367 % L = 460.00 m			g = -0.465 % L = 360.00 m		

ELEMENTS OF CURVES

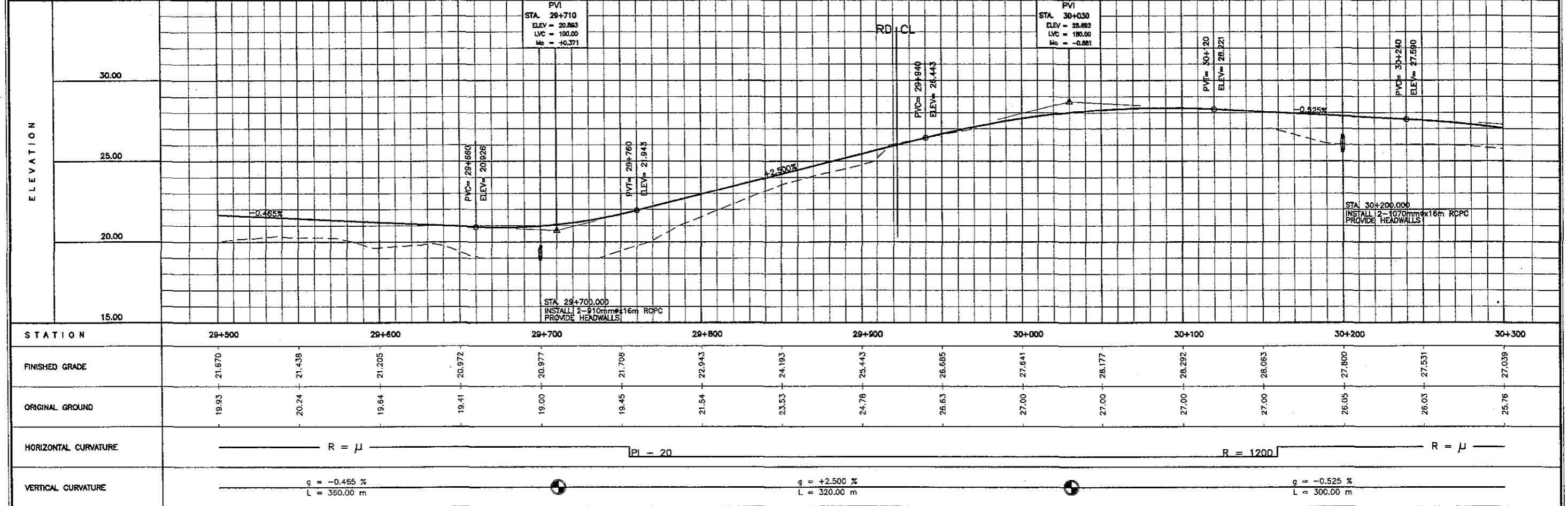
PI NO.	STATION	COORDINATES		I	R	T	Lc	Es	V(kph)
		NORTHING	EASTING						
20	29+958.010	1,202,329.794	508,470.370	19° 16' 25.25"	1,200.00	203.759	403.667	17.176	80

THE STUDY ON ROAD NETWORK IMPROVEMENT
FOR DEVELOPMENT OF REGIONAL GROWTH CENTERS

SCALE :
HOR. 1:2500
VER. 1:250

BACOLOD SUGAR ROAD (North)
PLAN AND PROFILE
STA. 29+500 - STA. 30+300

DRAWING NO.
R-38



ELEMENTS OF CURVES

PI NO.	STATION	COORDINATES		I	R	T	Lc	Es	V(kph)
		NORTHING	EASTING						
21	30+726.029	1,203,097.171	508,553.528	18° 06' 29.58"	2,000.00	318.705	249.405	25.234	80

THE STUDY ON ROAD NETWORK IMPROVEMENT
FOR DEVELOPMENT OF REGIONAL GROWTH CENTERS

SCALE :
HOR. 1:2500
VER. 1:250

BACOLOD SUGAR ROAD (North)
PLAN AND PROFILE
STA. 30+300 - STA. 31+100

DRAWING NO.
R-39

