

**ELEMENTS OF CURVES**

PI NO.	STATION	COORDINATES		I	R	T	Lc	Es	V(kph)
		NORTHING	EASTING						
15	23+883.222	1,196,667.518	506,415.507	9° 45' 28.60"	2,500.00	213.401	745.246	9.091	80

THE STUDY ON ROAD NETWORK IMPROVEMENT  
FOR DEVELOPMENT OF REGIONAL GROWTH CENTERS

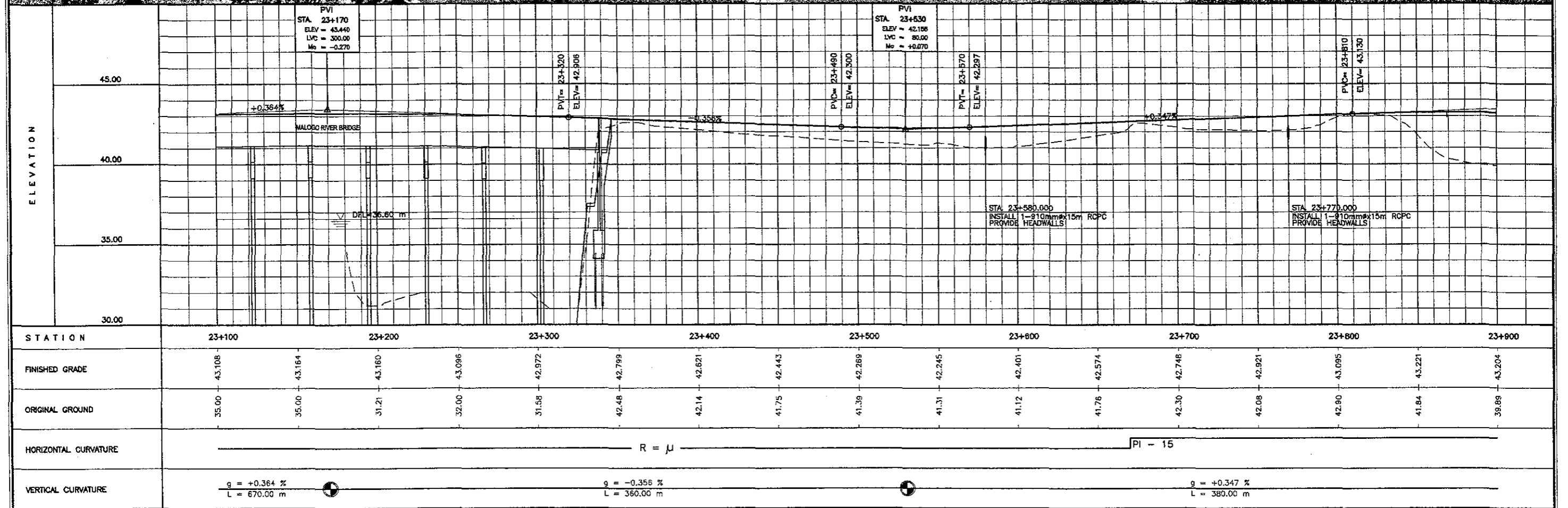
SCALE :  
HOR. 1:2500  
VER. 1:250

BACOLOD SUGAR ROAD (North)  
**PLAN AND PROFILE**  
STA. 23+100 - STA. 23+900

DRAWING NO.  
**R-30**



**MALOGO RIVER BRIDGE**  
STA. 23+174.00  
P-SPAN PCDG L = 324.00 M

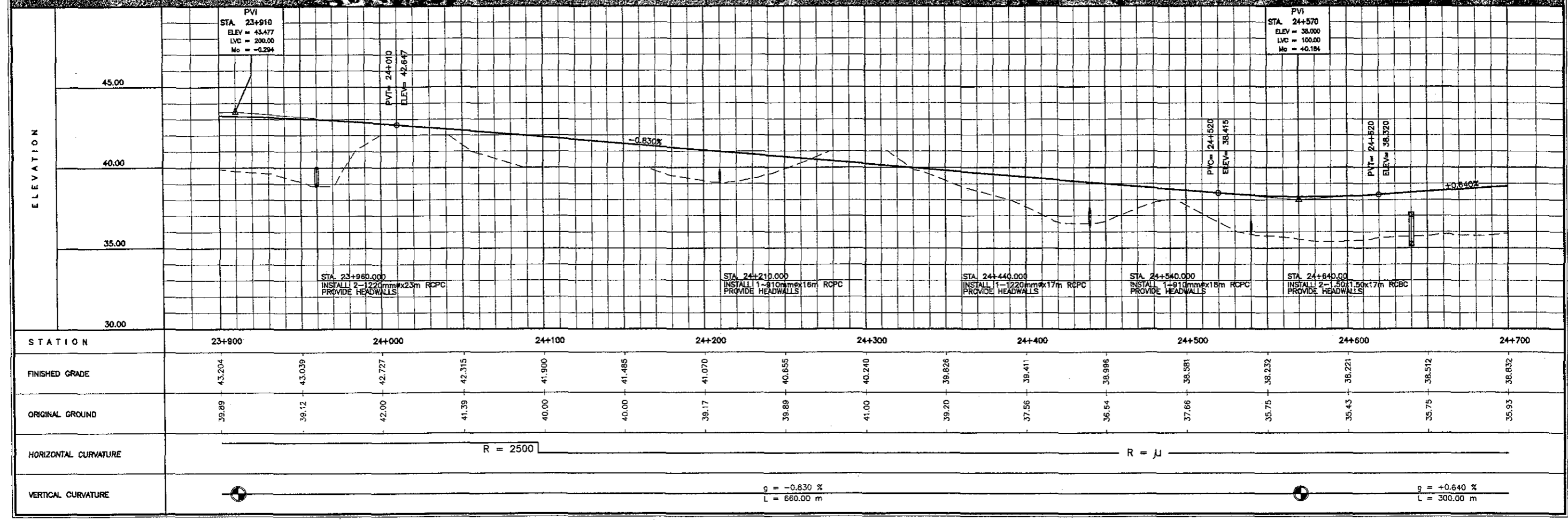


THE STUDY ON ROAD NETWORK IMPROVEMENT  
FOR DEVELOPMENT OF REGIONAL GROWTH CENTERS

SCALE :  
HOR. 1:2500  
VER. 1:250

BACOLOD SUGAR ROAD (North)  
**PLAN AND PROFILE**  
STA. 23+900 - STA. 24+700

DRAWING NO.  
**R-31**



PVI  
STA. 23+910  
ELEV = 43.477  
LVC = 200.00  
Mo = -0.294

PVI  
STA. 24+010  
ELEV = 42.647

PVI  
STA. 24+570  
ELEV = 38.000  
LVC = 100.00  
Mo = +0.184

STA. 23+960.000  
INSTALL 2-1220mmx23m RCPC  
PROVIDE HEADWALLS

STA. 24+210.000  
INSTALL 1-810mmx16m RCPC  
PROVIDE HEADWALLS

STA. 24+440.000  
INSTALL 1-1220mmx17m RCPC  
PROVIDE HEADWALLS

STA. 24+540.000  
INSTALL 1-910mmx18m RCPC  
PROVIDE HEADWALLS

STA. 24+640.000  
INSTALL 2-150x1.50x17m RCBC  
PROVIDE HEADWALLS

R = 2500

R = ∞

g = -0.830 %  
L = 660.00 m

g = +0.640 %  
L = 300.00 m

ELEMENTS OF CURVES

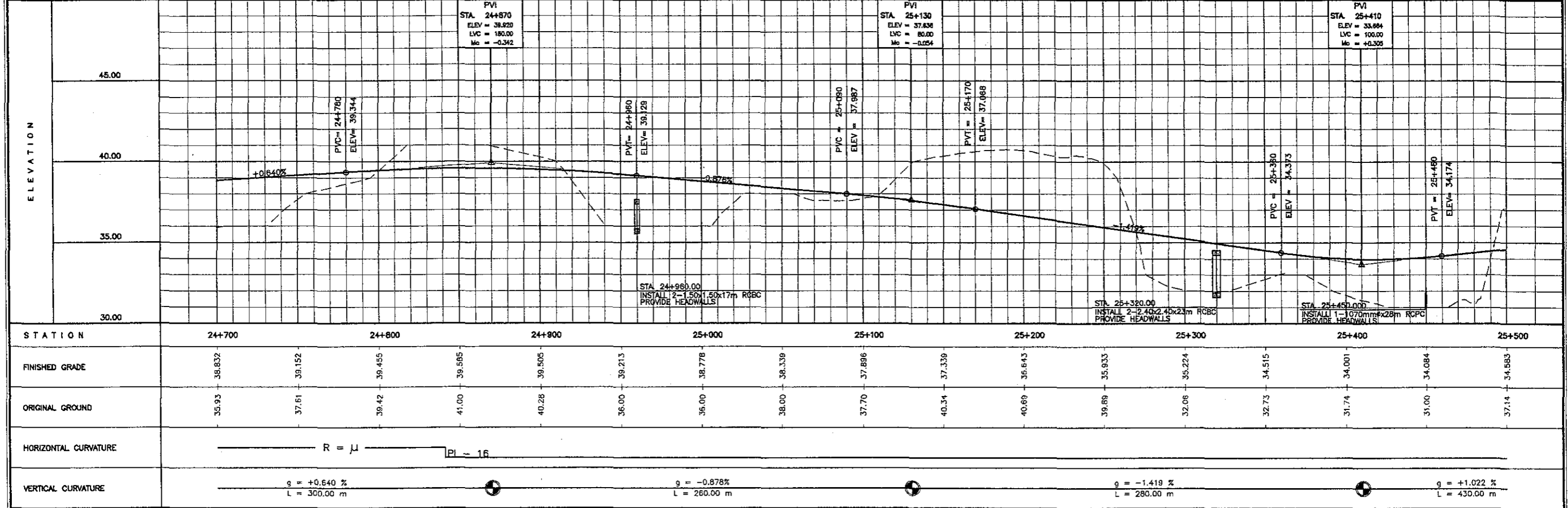
PI NO.	STATION	COORDINATES		I	R	T	Lc	Es	V(kph)
		NORTHING	EASTING						
16	25+194.078	1,197,887.108	506,898.881	11° 31' 34.30"	3,500.00	353.240	704.095	17.780	80

THE STUDY ON ROAD NETWORK IMPROVEMENT  
FOR DEVELOPMENT OF REGIONAL GROWTH CENTERS

SCALE :  
HOR. 1:2500  
VER. 1:250

BACOLOD SUGAR ROAD (North)  
PLAN AND PROFILE  
STA. 24+700 - STA. 25+500

DRAWING NO.  
R-32

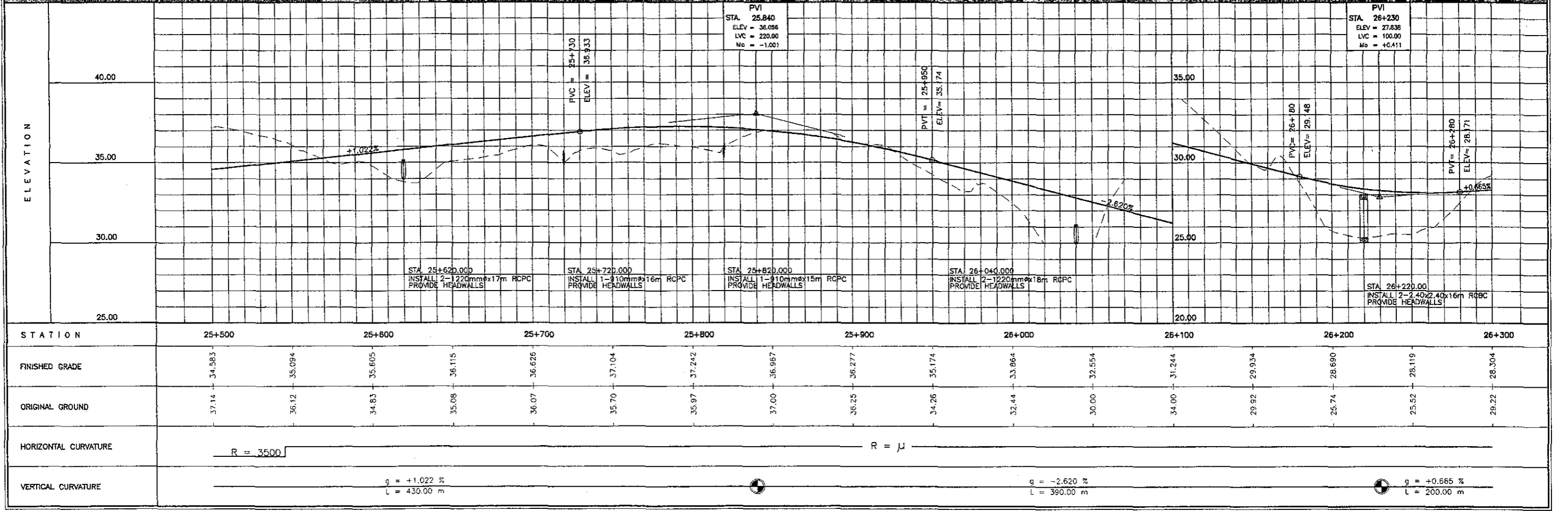


THE STUDY ON ROAD NETWORK IMPROVEMENT  
FOR DEVELOPMENT OF REGIONAL GROWTH CENTERS

SCALE :  
HOR. 1:2500  
VER. 1:250

BACOLOD SUGAR ROAD (North)  
**PLAN AND PROFILE**  
STA. 25+500 - STA. 26+300

DRAWING NO.  
**R-33**



**ELEMENTS OF CURVES**

PI NO.	STATION	COORDINATES		I	R	T	Lc	Es	V(kph)
		NORTHING	EASTING						
17	26+577.423	1,199,251.387	507,141.756	19° 23' 21.11"	1,500.00	256.254	507.608	21.731	80

THE STUDY ON ROAD NETWORK IMPROVEMENT  
FOR DEVELOPMENT OF REGIONAL GROWTH CENTERS

SCALE :  
HOR. 1:2500  
VER. 1:250

BACOLOD SUGAR ROAD (North)  
**PLAN AND PROFILE**  
STA. 26+300 - STA. 27+100

DRAWING NO.  
**R-34**

