

THE STUDY ON ROAD NETWORK IMPROVEMENT
FOR DEVELOPMENT OF REGIONAL GROWTH CENTERS

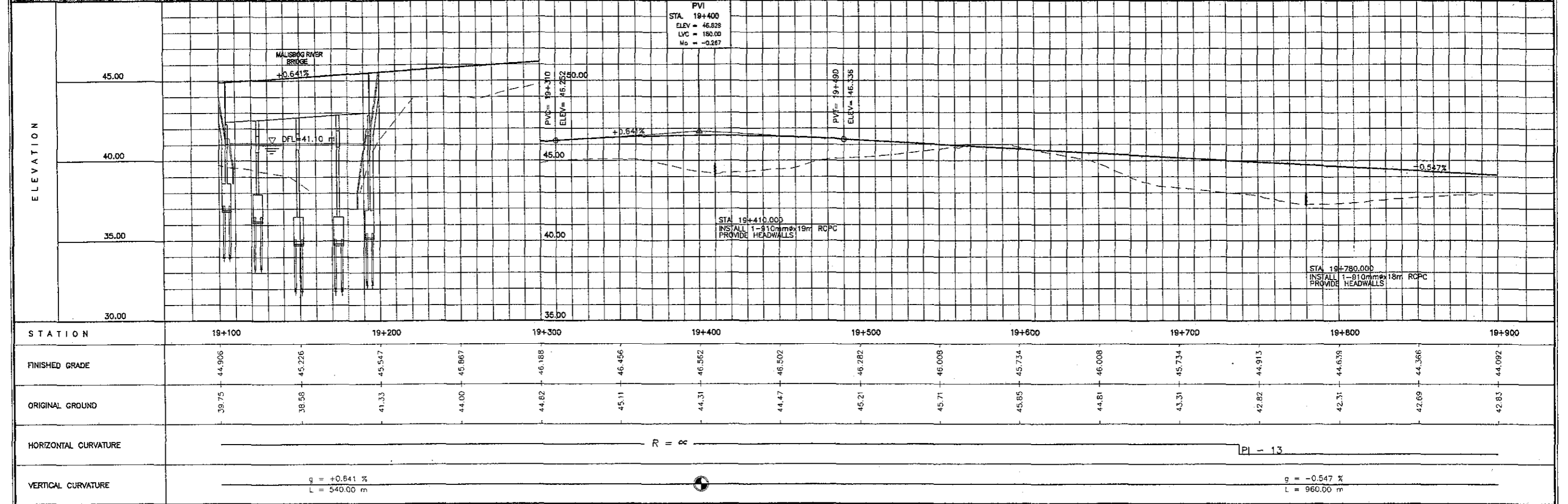
SCALE :
HOR. 1:2500
VER. 1:250

BACOLOD SUGAR ROAD (North)
PLAN AND PROFILE
STA. 19+100 - STA. 19+900

DRAWING NO.
R-25



MALISBOG RIVER BRIDGE
STA. 19+148.20
4 SPANS PCDG L = 80.00 M



ELEMENTS OF CURVES

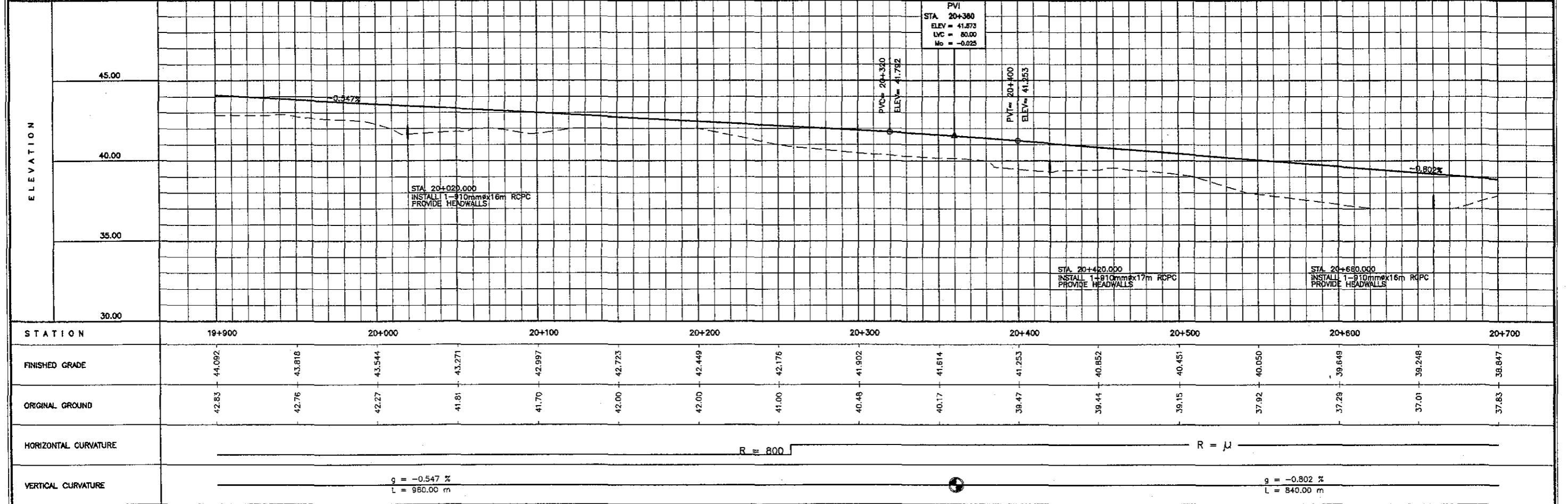
PI NO.	STATION	COORDINATES		I	R	T	Lc	Es	V(kph)
		NORTHING	EASTING						
13	20+006.805	1,192,912.330	506,431.707	37° 14' 37.92"	800.00	269.571	520.022	44.197	80

THE STUDY ON ROAD NETWORK IMPROVEMENT
FOR DEVELOPMENT OF REGIONAL GROWTH CENTERS

SCALE :
HOR. 1:2500
VER. 1:250

BACOLOD SUGAR ROAD (North)
PLAN AND PROFILE
STA. 19+900 - STA. 20+700

DRAWING NO.
R-26



ELEMENTS OF CURVES

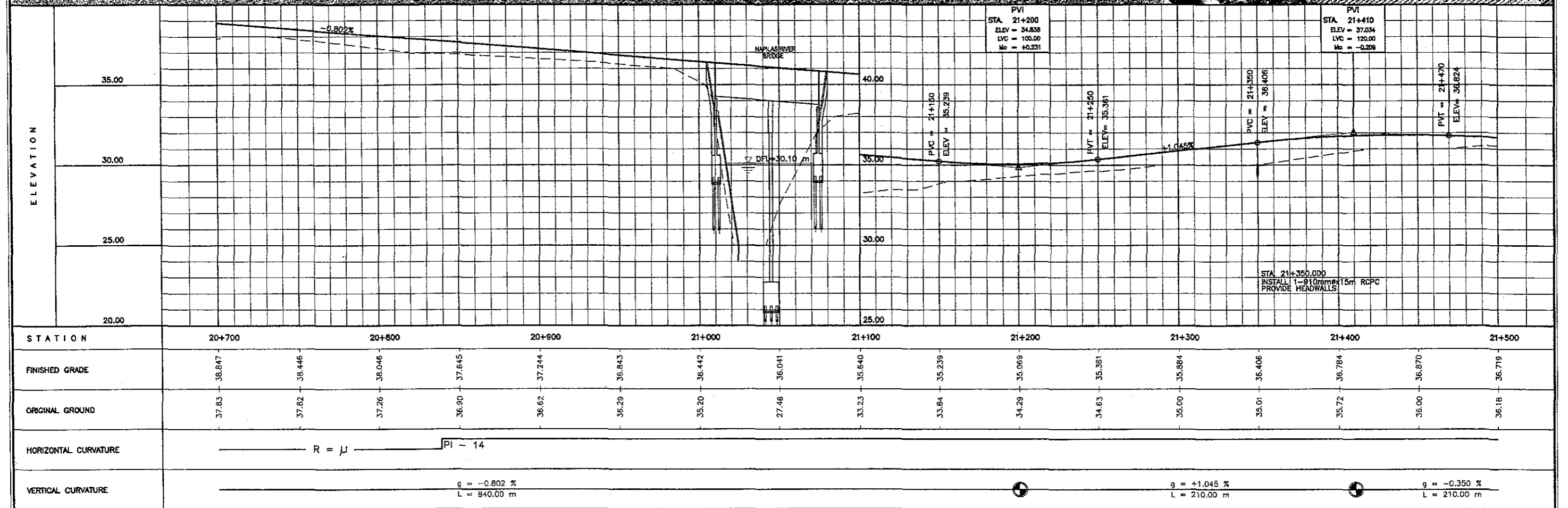
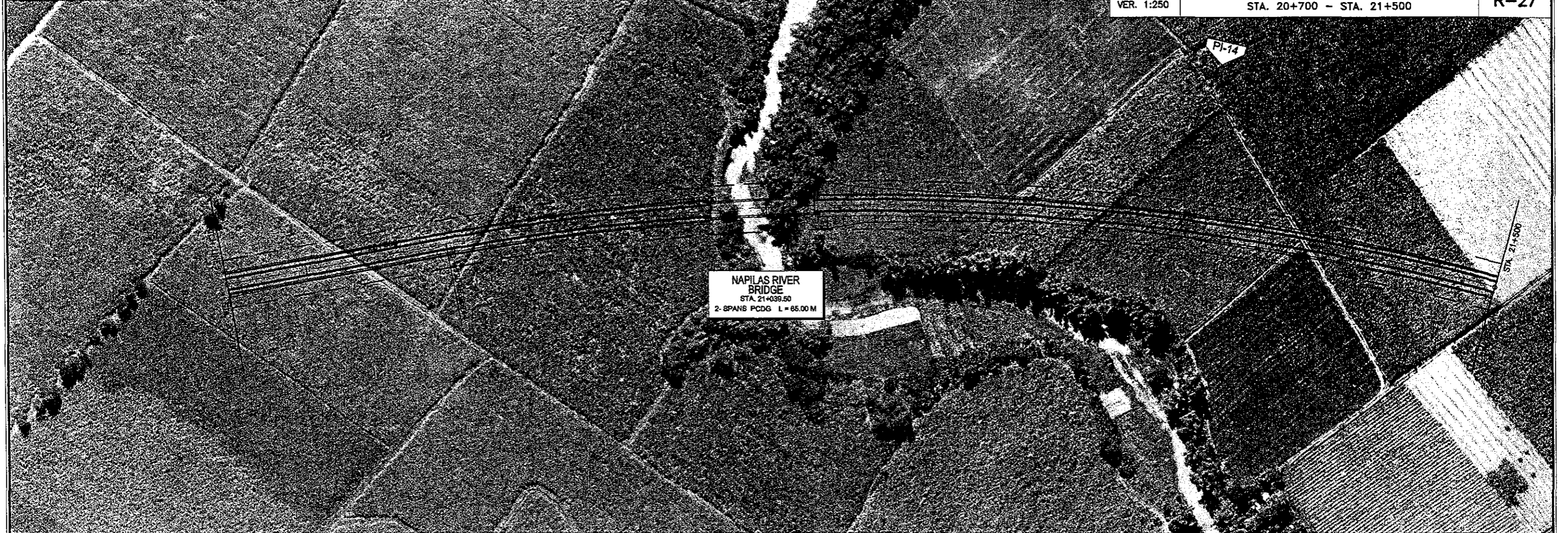
PI NO.	STATION	COORDINATES		I	R	T	Lc	Es	V(kph)
		NORTHING	EASTING						
14	21+326.690	1,194,133.887	505,883.317	36° 02' 20.99"	1,500.00	487.946	943.503	77.369	80

THE STUDY ON ROAD NETWORK IMPROVEMENT
FOR DEVELOPMENT OF REGIONAL GROWTH CENTERS

SCALE :
HOR. 1:2500
VER. 1:250

BACOLOD SUGAR ROAD (North)
PLAN AND PROFILE
STA. 20+700 - STA. 21+500

DRAWING NO.
R-27

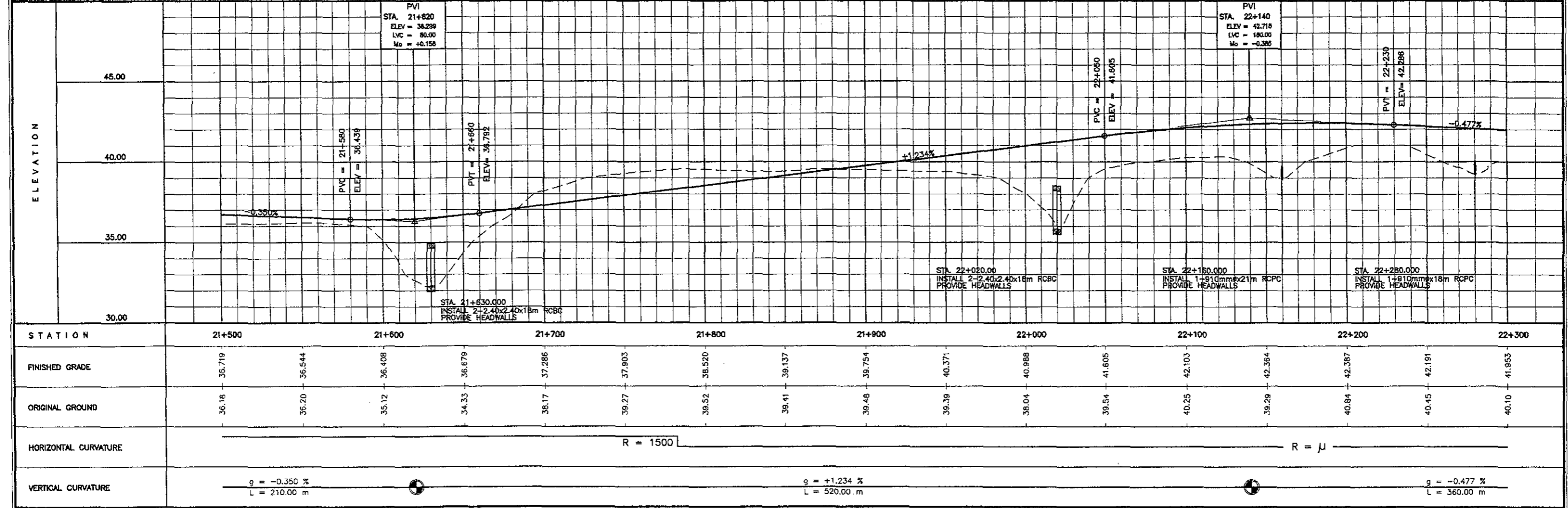


THE STUDY ON ROAD NETWORK IMPROVEMENT
FOR DEVELOPMENT OF REGIONAL GROWTH CENTERS

SCALE :
HOR. 1:2500
VER. 1:250

BACOLOD SUGAR ROAD (North)
PLAN AND PROFILE
STA. 21+500 - STA. 22+300

DRAWING NO.
R-28



SCALE :
HOR. 1:2500
VER. 1:250

BACOLOD SUGAR ROAD (North)
PLAN AND PROFILE
STA. 22+300 - STA. 23+100

DRAWING NO.
R-29

