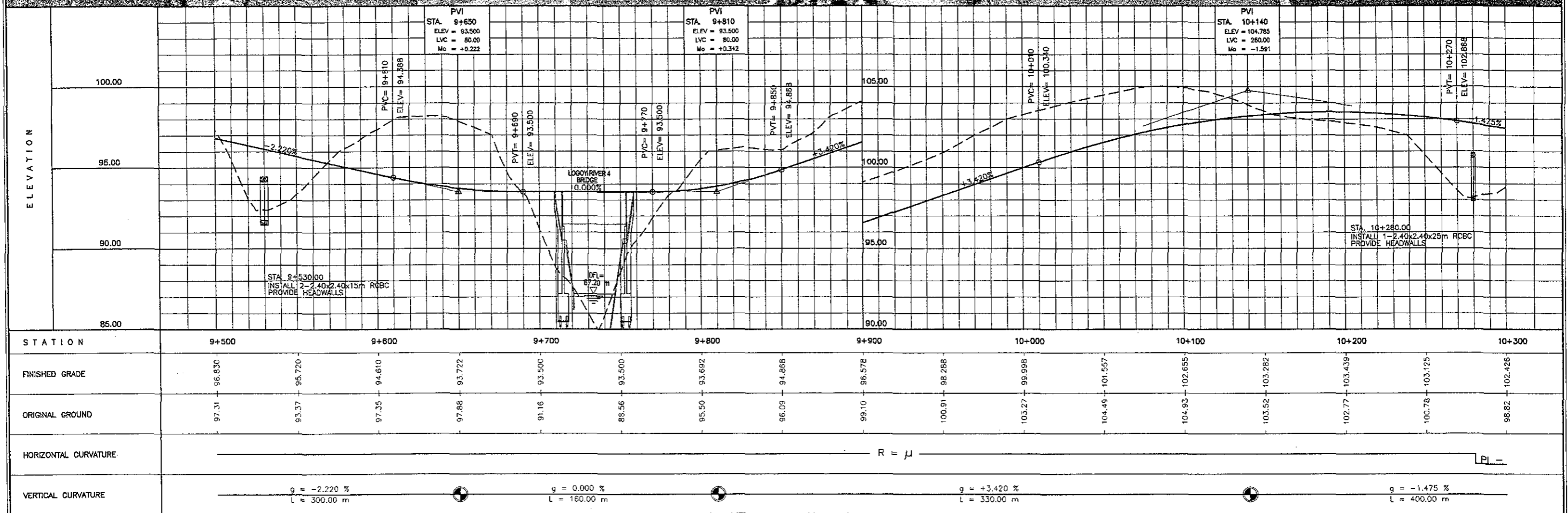


SCALE :
HOR. 1:2500
VER. 1:250

BACOLOD SUGAR ROAD (North)
PLAN AND PROFILE
STA. 9+500 - STA. 10+300

DRAWING NO.
R-13

LOGOY RIVER 4 BRIDGE
STA. 9+731.25
1-SPAN PCDG L=35.00 M



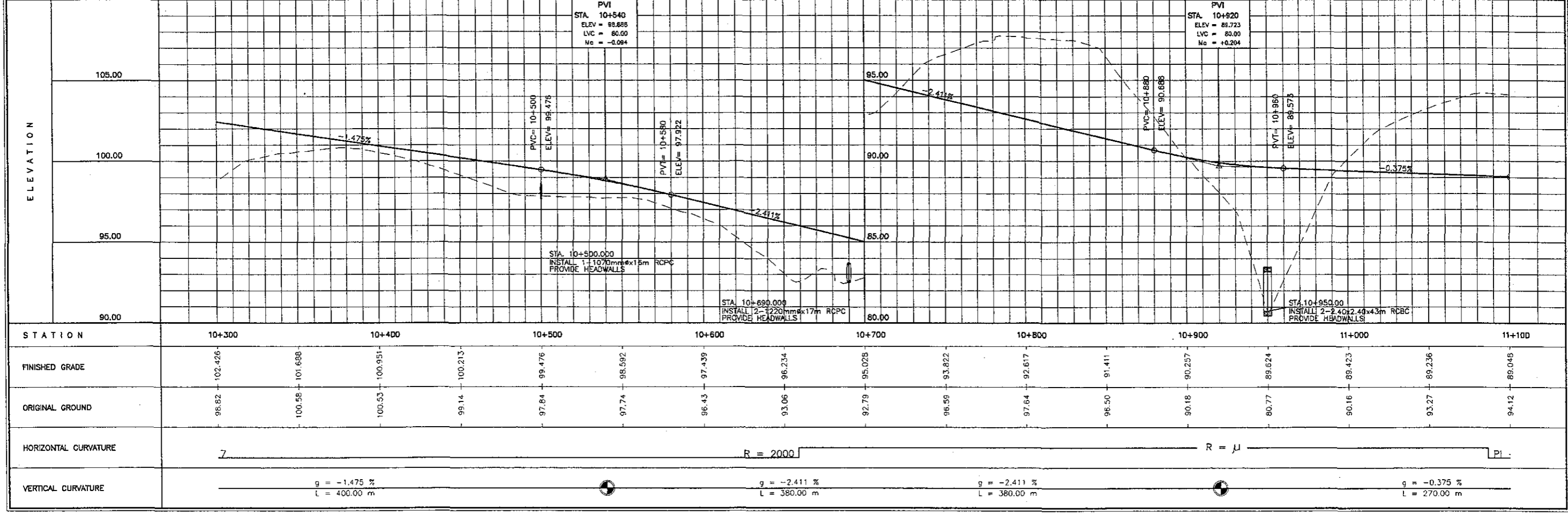
STATION	9+500	9+600	9+700	9+800	9+900	10+000	10+100	10+200	10+300	
FINISHED GRADE	96.830	95.720	94.610	93.500	93.500	96.578	98.288	99.998	101.557	
ORIGINAL GROUND	97.31	93.37	97.88	91.16	88.56	95.50	96.09	99.10	100.91	
HORIZONTAL CURVATURE	$R = \mu$									
VERTICAL CURVATURE	$g = -2.220\%$ $L = 300.00\text{ m}$			$g = 0.000\%$ $L = 160.00\text{ m}$			$g = +3.420\%$ $L = 330.00\text{ m}$			$g = -1.475\%$ $L = 400.00\text{ m}$

ELEMENTS OF CURVES

PI NO.	STATION	COORDINATES		I	R	T	Lc	Es	V(kph)
		NORTHING	EASTING						
7	10+469.817	1,183,886.125	504,216.806	10° 50' 29.70"	2,000.00	189.788	378.443	8.985	80

THE STUDY ON ROAD NETWORK IMPROVEMENT
FOR DEVELOPMENT OF REGIONAL GROWTH CENTERS

SCALE :	BACOLOD SUGAR ROAD (North)	DRAWING NO.
HOR. 1:2500 VER. 1:250	PLAN AND PROFILE STA. 10+300 - STA. 11+100	R-14



STATION	10+300	10+400	10+500	10+600	10+700	10+800	10+900	11+000	11+100								
FINISHED GRADE	102.426	101.688	100.951	100.213	99.476	98.592	97.439	96.234	95.028	93.822	92.617	91.411	90.257	89.624	89.423	89.236	89.048
ORIGINAL GROUND	96.82	100.58	100.53	99.14	97.84	97.74	96.43	93.06	92.79	96.59	97.64	96.50	90.18	80.77	90.16	93.27	94.12
HORIZONTAL CURVATURE	Z _____ R = 2000 _____ R = ∞ _____ PI																
VERTICAL CURVATURE	g = -1.475% L = 400.00 m g = -2.411% L = 380.00 m g = -2.411% L = 380.00 m g = -0.375% L = 270.00 m																

ELEMENTS OF CURVES

PI NO.	STATION	COORDINATES		I	R	T	Lc	Es	V(kph)
		NORTHING	EASTING						
8	11+258.247	1,184,614.536	504,521.482	9° 50' 51.29"	2,000.00	172.297	343.745	7.408	80

THE STUDY ON ROAD NETWORK IMPROVEMENT
FOR DEVELOPMENT OF REGIONAL GROWTH CENTERS

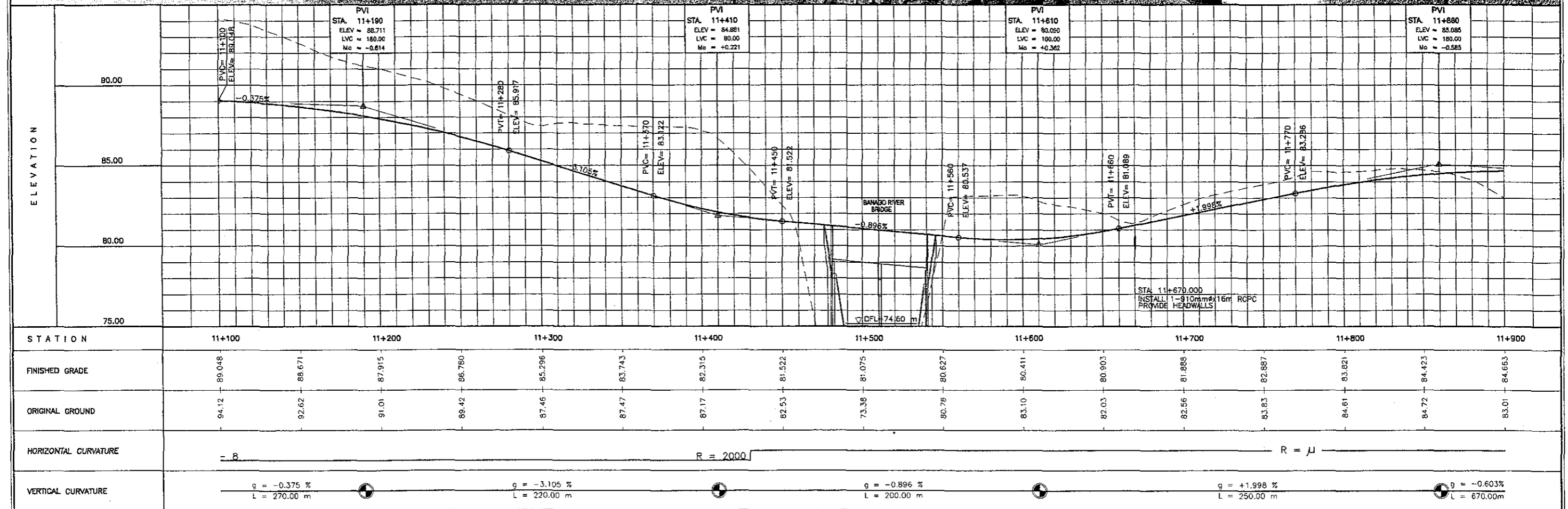
SCALE :
HOR. 1:2500
VER. 1:250

BACOLOD SUGAR ROAD (North)
PLAN AND PROFILE
STA. 11+100 - STA. 11+900

DRAWING NO.
R-15



BANAGO RIVER BRIDGE
STA. 11+508.00
2-SPAN PCDG L=60.00 M



ELEMENTS OF CURVES

PI NO.	STATION	COORDINATES		I	R	T	Lc	Es	V(kph)
		NORTHING	EASTING						
9	12+126.720	1,185,462.083	504,714.830	7° 38' 45.42"	3,000.00	200.468	400.341	6.690	80

THE STUDY ON ROAD NETWORK IMPROVEMENT
FOR DEVELOPMENT OF REGIONAL GROWTH CENTERS

SCALE :
HOR. 1:2500
VER. 1:250

BACOLOD SUGAR ROAD (North)
PLAN AND PROFILE
STA. 11+900 - STA. 12+700

DRAWING NO.
R-16

