

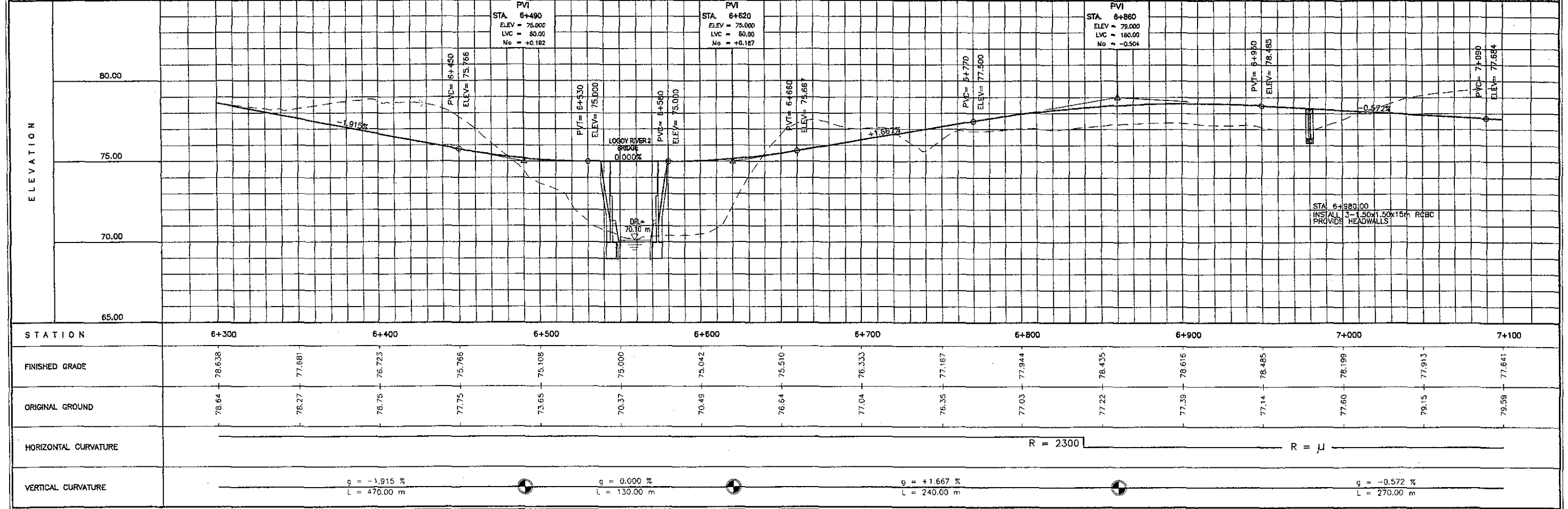
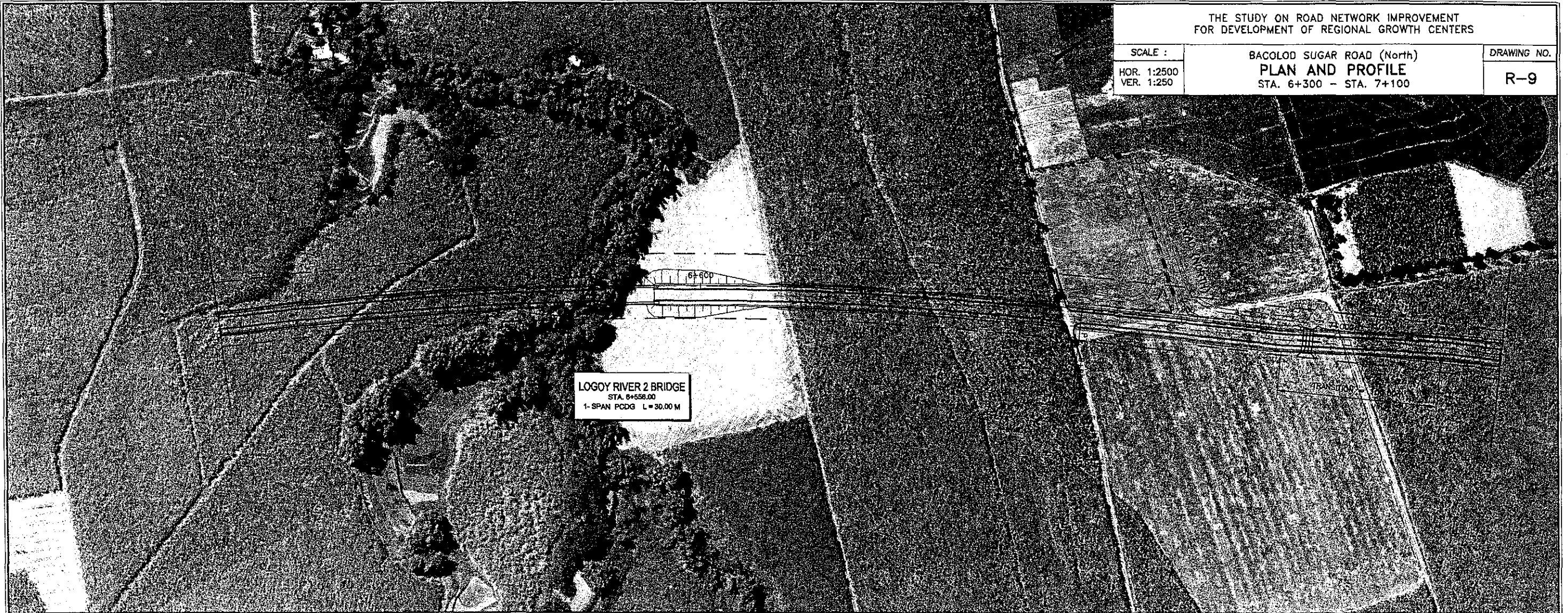
THE STUDY ON ROAD NETWORK IMPROVEMENT  
FOR DEVELOPMENT OF REGIONAL GROWTH CENTERS

SCALE :  
HOR. 1:2500  
VER. 1:250

BACOLOD SUGAR ROAD (North)  
**PLAN AND PROFILE**  
STA. 6+300 - STA. 7+100

DRAWING NO.  
**R-9**

**LOGOY RIVER 2 BRIDGE**  
STA. 6+556.00  
1-SPAN PCDG L=30.00 M



PVI STA. 6+490  
ELEV = 75.000  
LVC = 80.00  
No = +0.192

PVI STA. 6+620  
ELEV = 75.000  
LVC = 80.00  
No = +0.187

PVI STA. 6+960  
ELEV = 78.000  
LVC = 180.00  
No = -0.504

PVC= 6+450  
ELEV= 75.766

PVI= 6+530  
ELEV= 75.000

PVI= 6+590  
ELEV= 75.000

PVI= 6+660  
ELEV= 75.667

PVC= 6+770  
ELEV= 77.500

PVI= 6+930  
ELEV= 78.485

PVC= 7+050  
ELEV= 77.654

STA. 6+980.00  
INSTALL 3-1.50x1.50x15m RCBC  
PROVIDE HEADWALLS

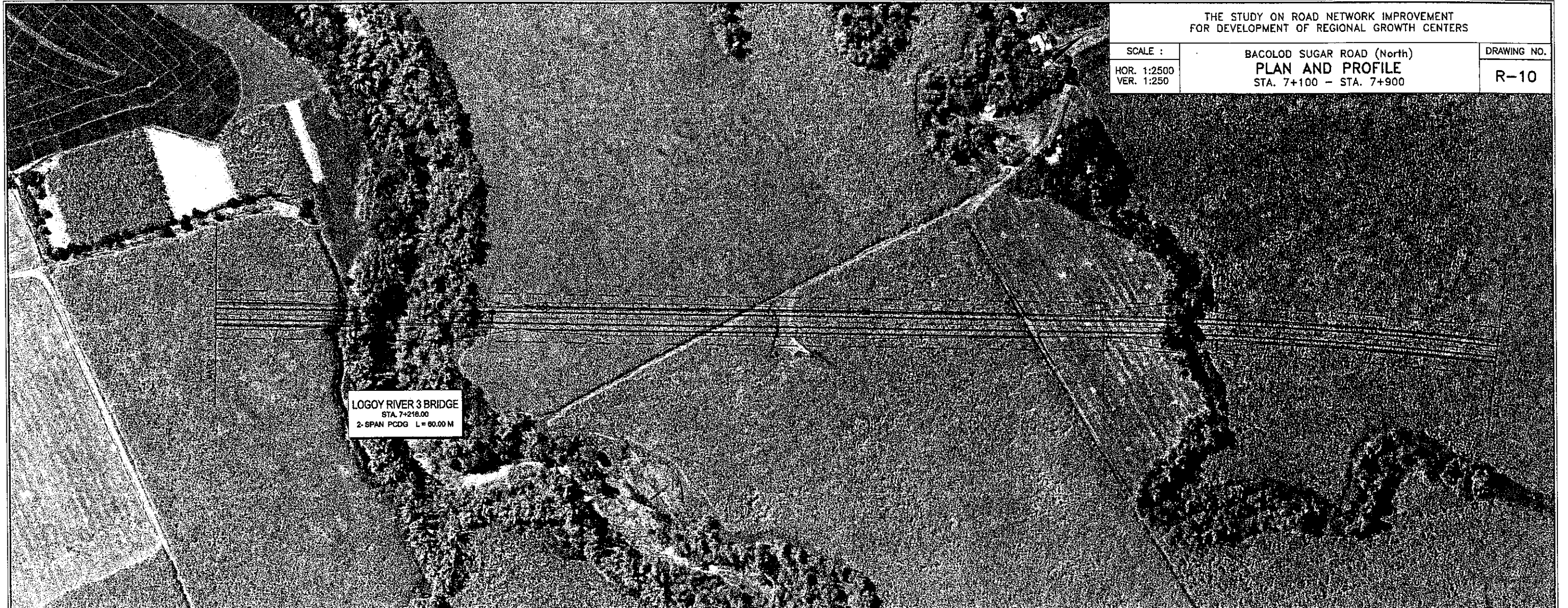


THE STUDY ON ROAD NETWORK IMPROVEMENT  
FOR DEVELOPMENT OF REGIONAL GROWTH CENTERS

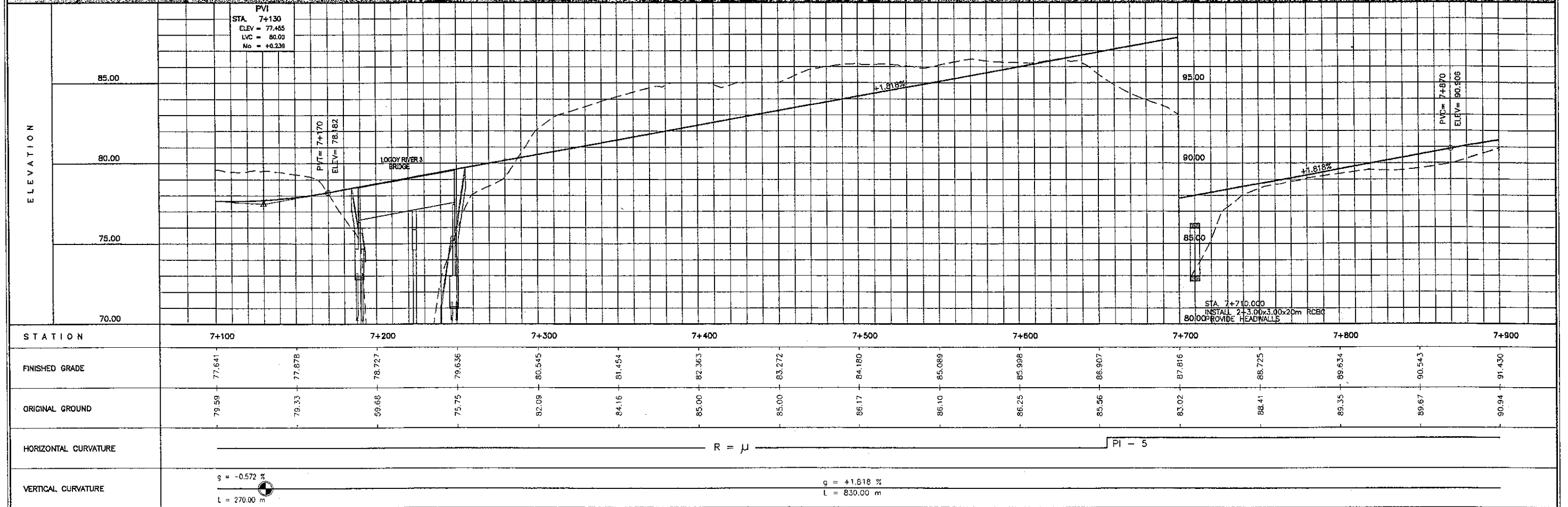
SCALE :  
HOR. 1:2500  
VER. 1:250

BACOLOD SUGAR ROAD (North)  
**PLAN AND PROFILE**  
STA. 7+100 - STA. 7+900

DRAWING NO.  
**R-10**



**LOGOY RIVER 3 BRIDGE**  
STA. 7+218.00  
2-SPAN PCDG L=80.00 M



PVI  
STA. 7+130  
ELEV. 77.455  
LVC = 86.00  
No. = +0.236

PVI = 7+170  
ELEV. = 78.182

LOGOY RIVER 3 BRIDGE

PVI = 7+870  
ELEV. = 90.906

STA. 7+710.000  
INSTALL 2-3.00x3.00x20m RCBQ  
80/100 PROVIDE HEADWALLS

R = ∞

PI - 5



**ELEMENTS OF CURVES**

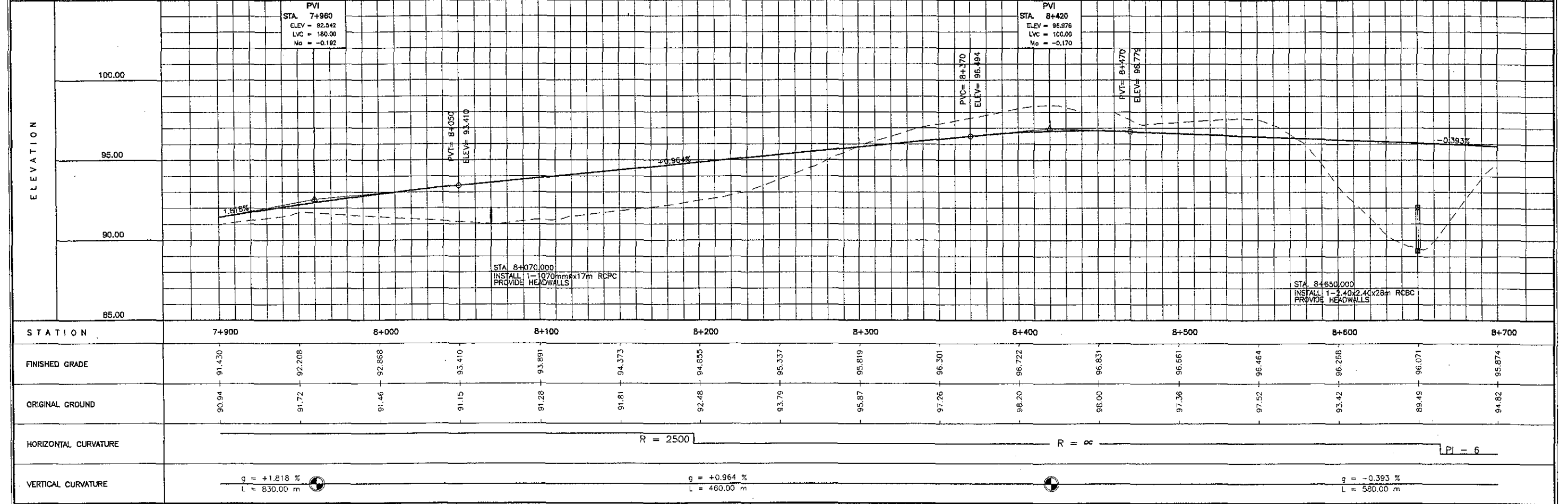
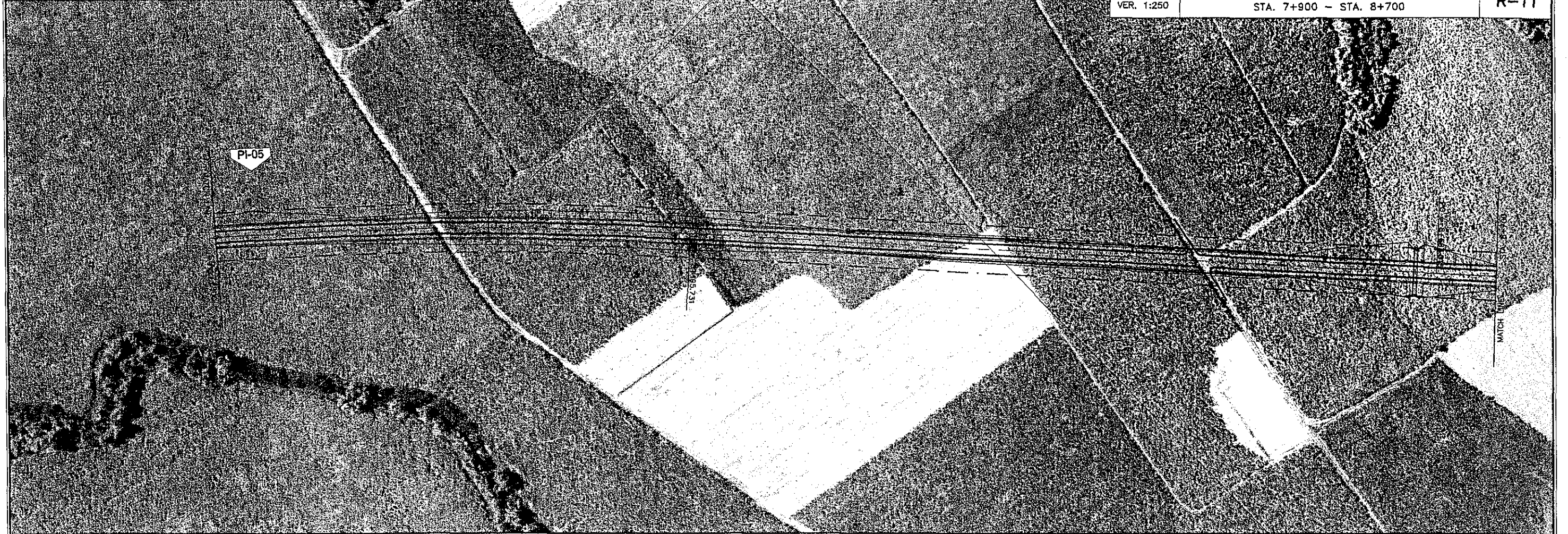
PI NO.	STATION	COORDINATES		I	R	T	Lc	Es	V(kph)
		NORTHING	EASTING						
5	7+926.183	1,181,915.251	502,629.454	12° 24' 13.89"	2,500.00	271.672	541.220	14.718	80

THE STUDY ON ROAD NETWORK IMPROVEMENT  
FOR DEVELOPMENT OF REGIONAL GROWTH CENTERS

SCALE :  
HOR. 1:2500  
VER. 1:250

BACOLOD SUGAR ROAD (North)  
**PLAN AND PROFILE**  
STA. 7+900 - STA. 8+700

DRAWING NO.  
**R-11**





**ELEMENTS OF CURVES**

PI NO.	STATION	COORDINATES		I	R	T	Lc	Es	V(kph)
		NORTHING	EASTING						
6	8+905.382	1,182,580.213	503,351.133	13° 48' 8.23"	2,000.00	242.067	481.791	14.596	80

THE STUDY ON ROAD NETWORK IMPROVEMENT  
FOR DEVELOPMENT OF REGIONAL GROWTH CENTERS

SCALE :  
HOR. 1:2500  
VER. 1:250

BACOLOD SUGAR ROAD (North)  
**PLAN AND PROFILE**  
STA. 8+700 - STA. 9+500

DRAWING NO.  
**R-12**

