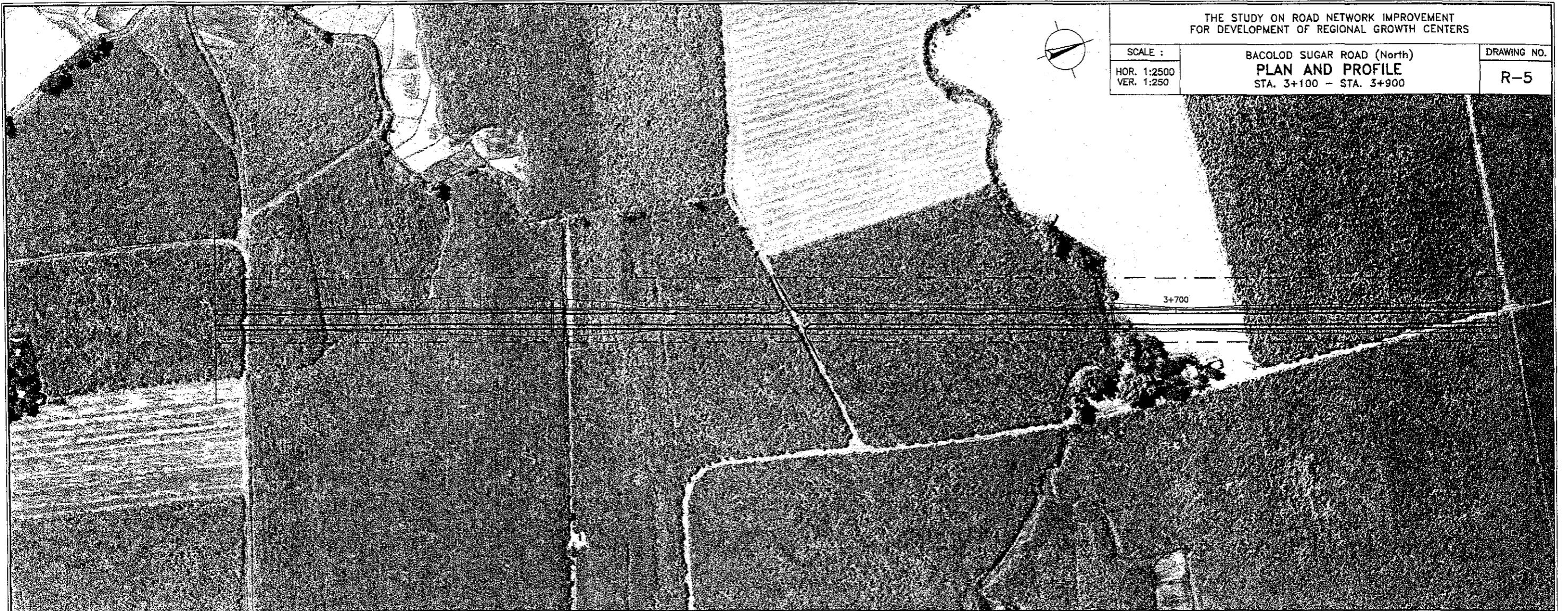


THE STUDY ON ROAD NETWORK IMPROVEMENT
FOR DEVELOPMENT OF REGIONAL GROWTH CENTERS

SCALE :
HOR. 1:2500
VER. 1:250

BACOLOD SUGAR ROAD (North)
PLAN AND PROFILE
STA. 3+100 - STA. 3+900

DRAWING NO.
R-5



ELEMENTS OF CURVES

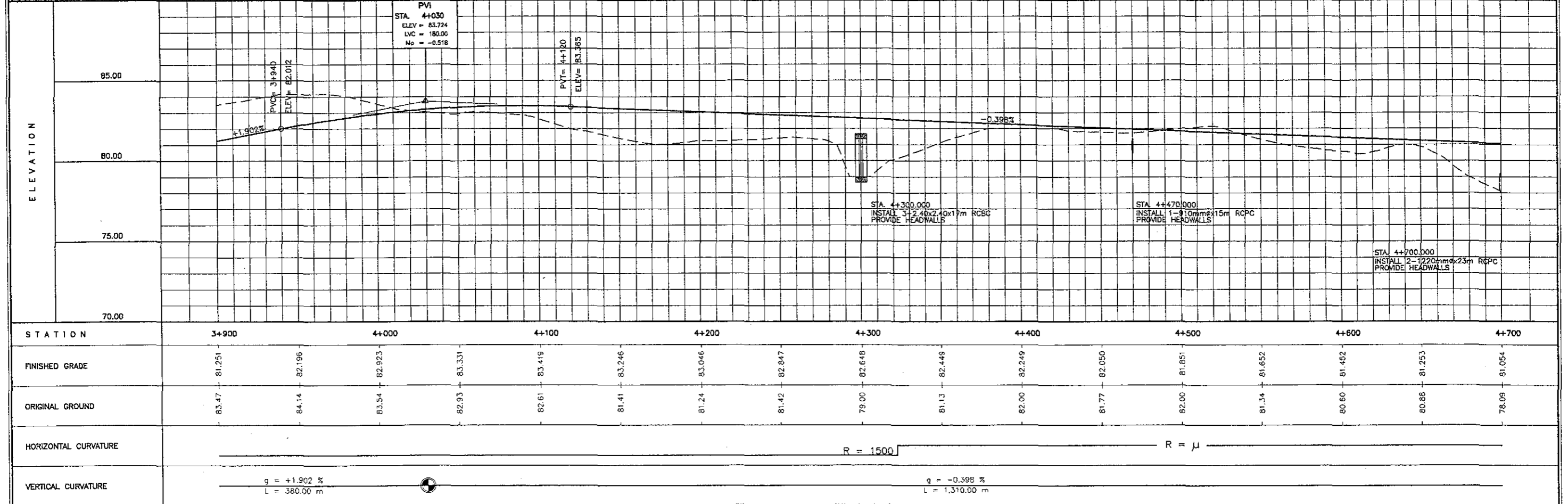
PI NO.	STATION	COORDINATES		I	R	T	Lc	Es	V(kph)
		NORTHING	EASTING						
3	4+080.337	1,178,346.486	501,586.304	18° 36' 38.89"	1,500.00	245.780	487.230	20.003	80

THE STUDY ON ROAD NETWORK IMPROVEMENT
FOR DEVELOPMENT OF REGIONAL GROWTH CENTERS

SCALE :
HOR. 1:2500
VER. 1:250

BACOLOD SUGAR ROAD (North)
PLAN AND PROFILE
STA. 3+900 -- STA. 4+700

DRAWING NO.
R-6



THE STUDY ON ROAD NETWORK IMPROVEMENT
FOR DEVELOPMENT OF REGIONAL GROWTH CENTERS

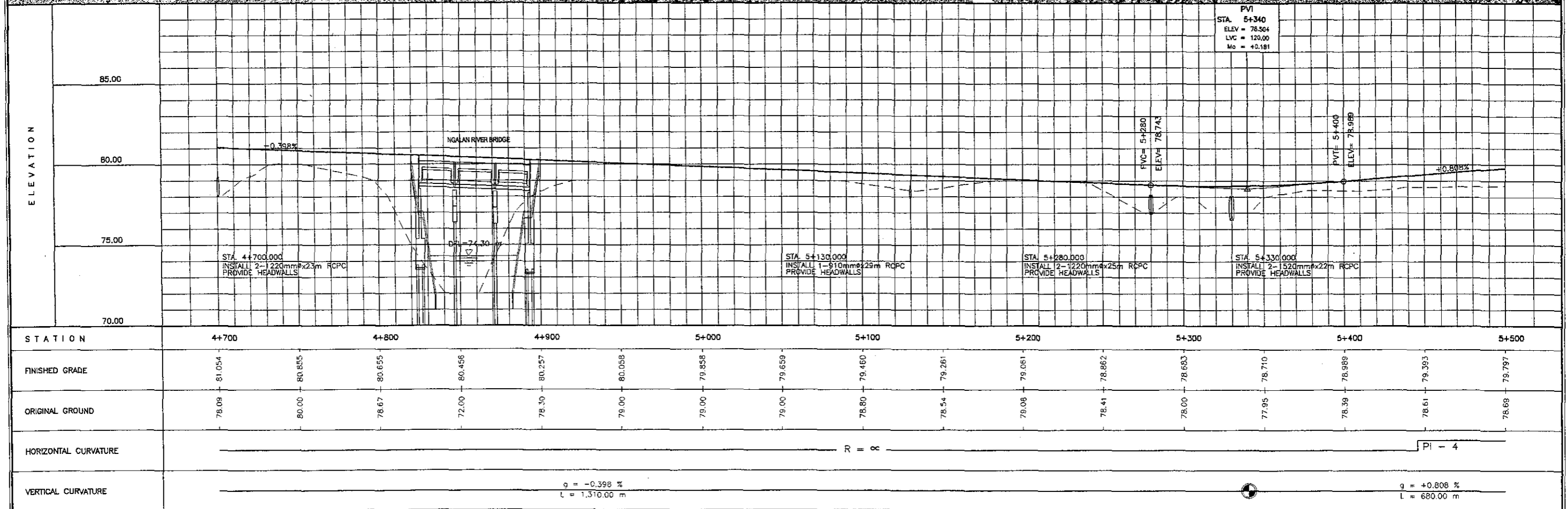
SCALE :
HOR. 1:2500
VER. 1:250

BACOLOD SUGAR ROAD (North)
PLAN AND PROFILE
STA. 4+700 ~ STA. 5+500

DRAWING NO.
R-7



NGALAN RIVER BRIDGE
STA. 4+656.50
3-SPAN PCDG L=68.00 M



PVI
STA. 5+340
ELEV = 78.504
LVC = 120.00
Mo = +0.181

STA. 4+700.000
INSTALL 2-1220mmx23m RCPC
PROVIDE HEADWALLS

NGALAN RIVER BRIDGE

STA. 5+130.000
INSTALL 1-910mmx29m RCPC
PROVIDE HEADWALLS

STA. 5+280.000
INSTALL 2-1220mmx25m RCPC
PROVIDE HEADWALLS

STA. 5+330.000
INSTALL 2-1520mmx22m RCPC
PROVIDE HEADWALLS

FVC = 5+280
ELEV = 78.743

PVT = 5+400
ELEV = 78.989

HORIZONTAL CURVATURE: $R = 8$ PI - 4

ELEMENTS OF CURVES

PI NO.	STATION	COORDINATES		I	R	T	Lc	Es	V(kph)
		NORTHING	EASTING						
4	6+163.774	1,180,434.235	501,594.809	34° 42' 17.83"	2,300.00	718.682	1,393.146	109.669	80

THE STUDY ON ROAD NETWORK IMPROVEMENT
FOR DEVELOPMENT OF REGIONAL GROWTH CENTERS

SCALE :
HOR. 1:2500
VER. 1:250

BACOLOD SUGAR ROAD (North)
PLAN AND PROFILE
STA. 5+500 - STA. 6+300

DRAWING NO.
R-8

