

**BACOLOD SUGAR
ROAD (NORTH)**

ELEMENTS OF CURVES

PI NO.	STATION	COORDINATES		I	R	T	Lc	Es	V(kph)
		NORTHING	EASTING						
0	0+000.000	1,175,040.847	499,499.674						
1	0+693.259	1,175,699.038	499,717.373	42° 01' 45.08"	1,000.00	384.156	733.548	71.250	80

THE STUDY ON ROAD NETWORK IMPROVEMENT
FOR DEVELOPMENT OF REGIONAL GROWTH CENTERS

SCALE :
HOR. 1:2500
VER. 1:250

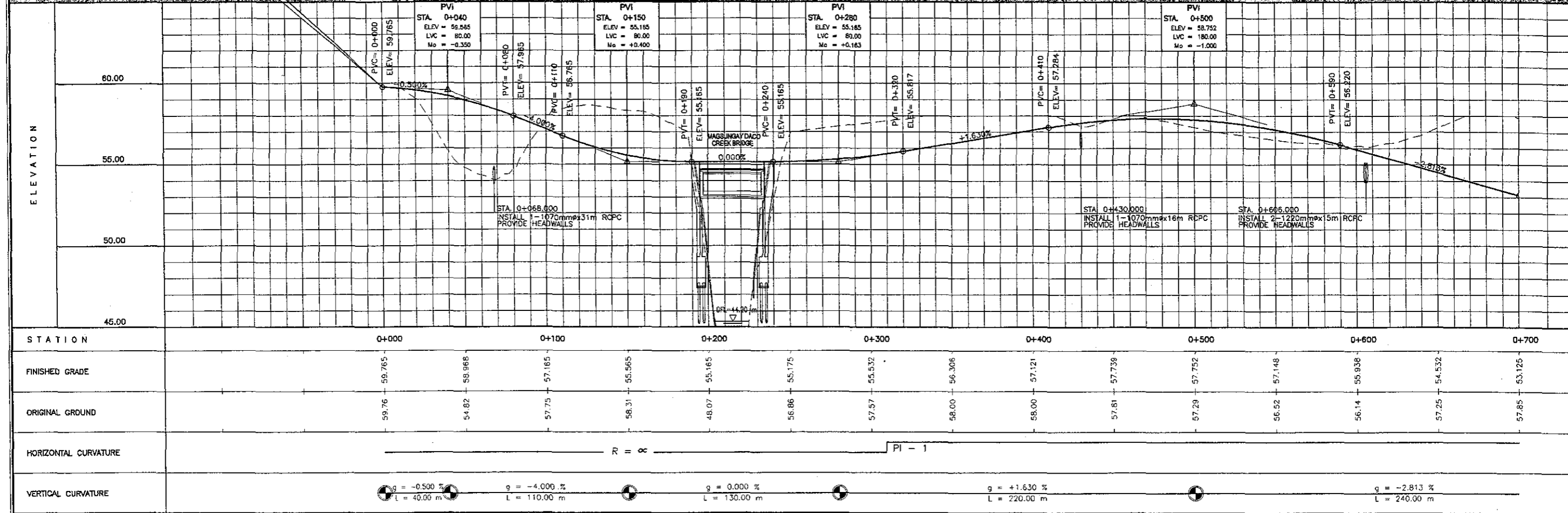
BACOLOD SUGAR ROAD (North)
PLAN AND PROFILE
STA. 0+000 - STA. 0+700

DRAWING NO.
R-1



**BACOLOD SUGAR ROAD (NORTH)
START OF PROJECT**
STA. 0+000.00
ELEV. = 59.765
N = 1175040.847
E = 499499.674

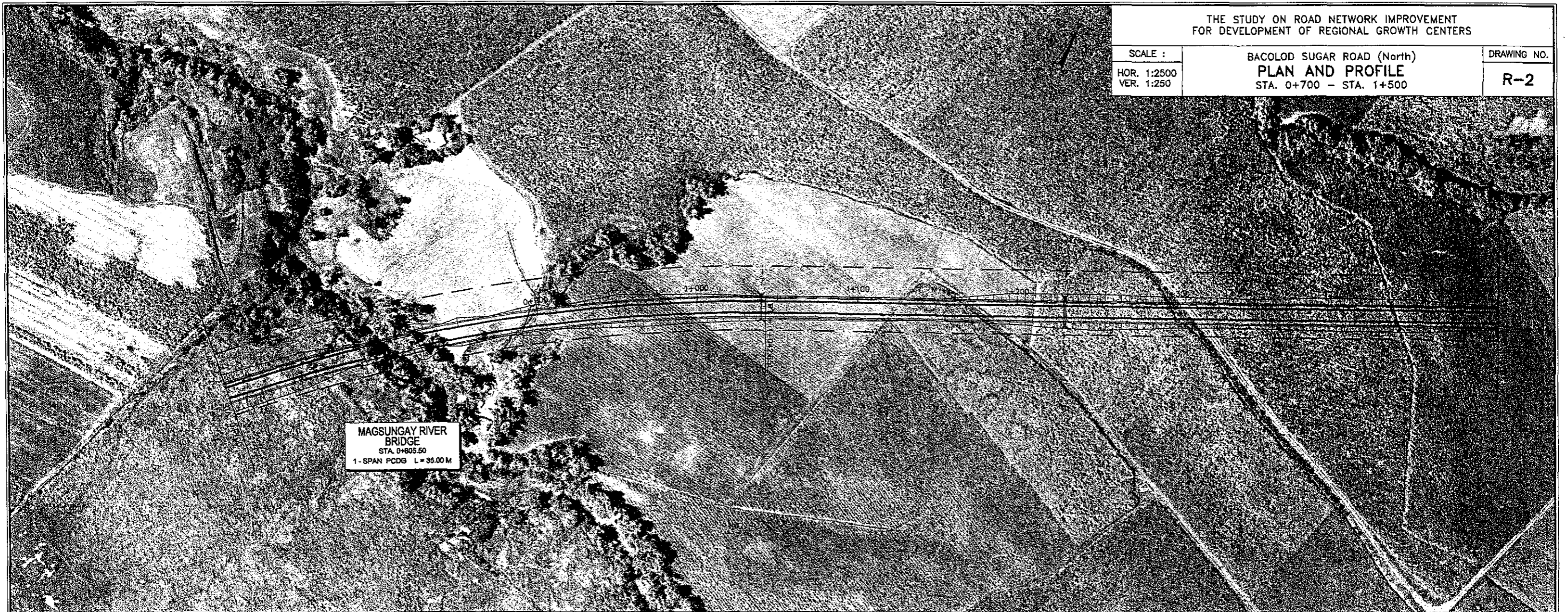
**MAGSUNGAY DACO
CREEK BRIDGE**
STA. 0+212.00
1-SPAN PCDG L=40.00 M



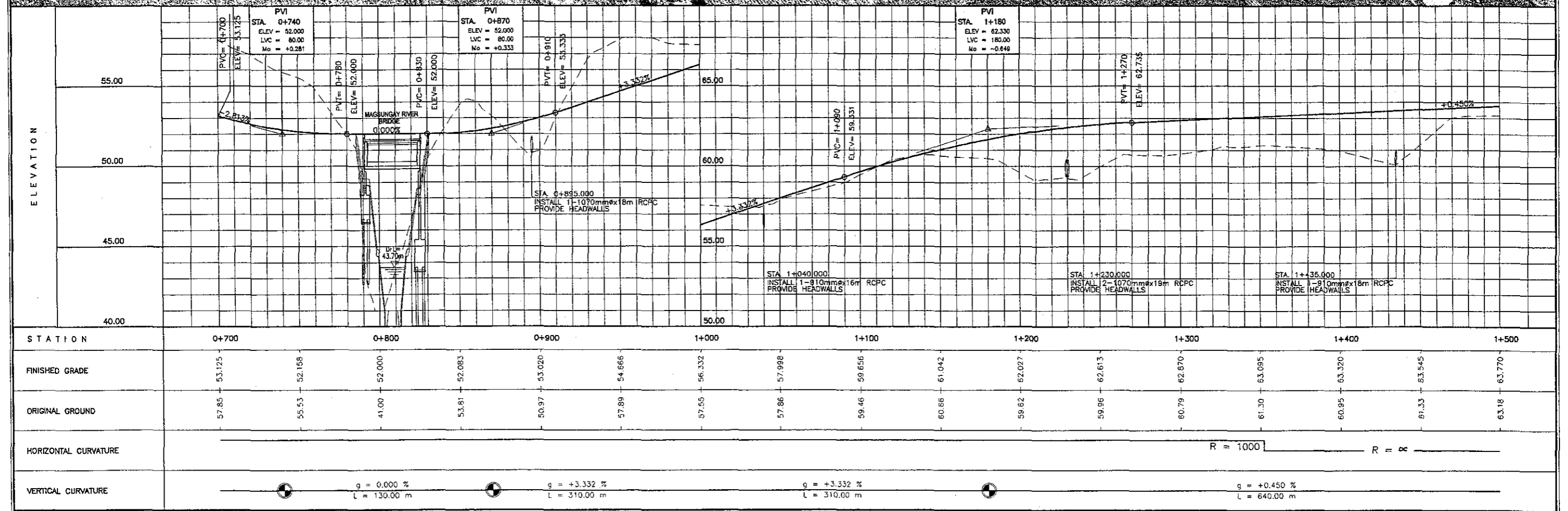
SCALE :
HOR. 1:2500
VER. 1:250

BACOLOD SUGAR ROAD (North)
PLAN AND PROFILE
STA. 0+700 - STA. 1+500

DRAWING NO.
R-2



MAGSUNGAY RIVER BRIDGE
STA. 0+805.50
1-SPAN PCDDG L=35.00 M



ELEMENTS OF CURVES

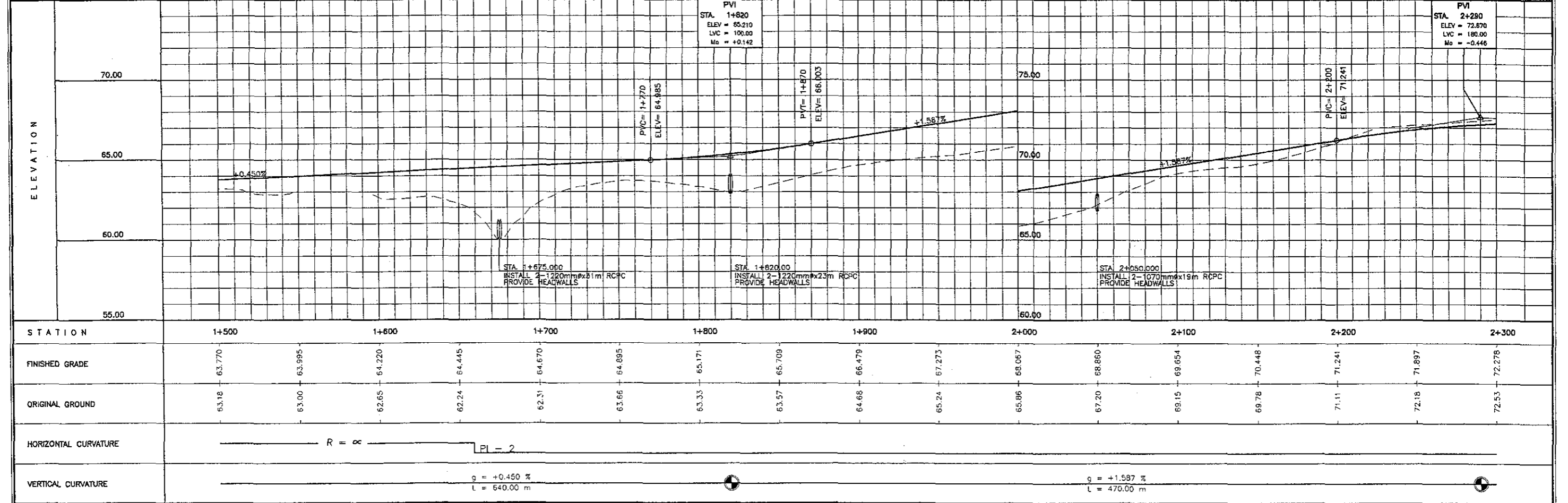
PI NO.	STATION	COORDINATES		I	R	T	Lc	Es	V(kph)
		NORTHING	EASTING						
2	2+037.687	1,176,381.723	500,915.753	41° 29' 12.43"	1,000.00	378.734	724.081	69.317	80

THE STUDY ON ROAD NETWORK IMPROVEMENT
FOR DEVELOPMENT OF REGIONAL GROWTH CENTERS

SCALE :
HOR. 1:2500
VER. 1:250

BACOLOD SUGAR ROAD (North)
PLAN AND PROFILE
STA. 1+500 - STA. 2+300

DRAWING NO.
R-3



SCALE :
HOR. 1:2500
VER. 1:250

BACOLOD SUGAR ROAD (North)
PLAN AND PROFILE
STA. 2+300 - STA. 3+100

DRAWING NO.
R-4

**MAGSUNGAY PEQUENA
RIVER BRIDGE**
STA. 2+672.00
3-SPAN PCDG L=80.00 M

