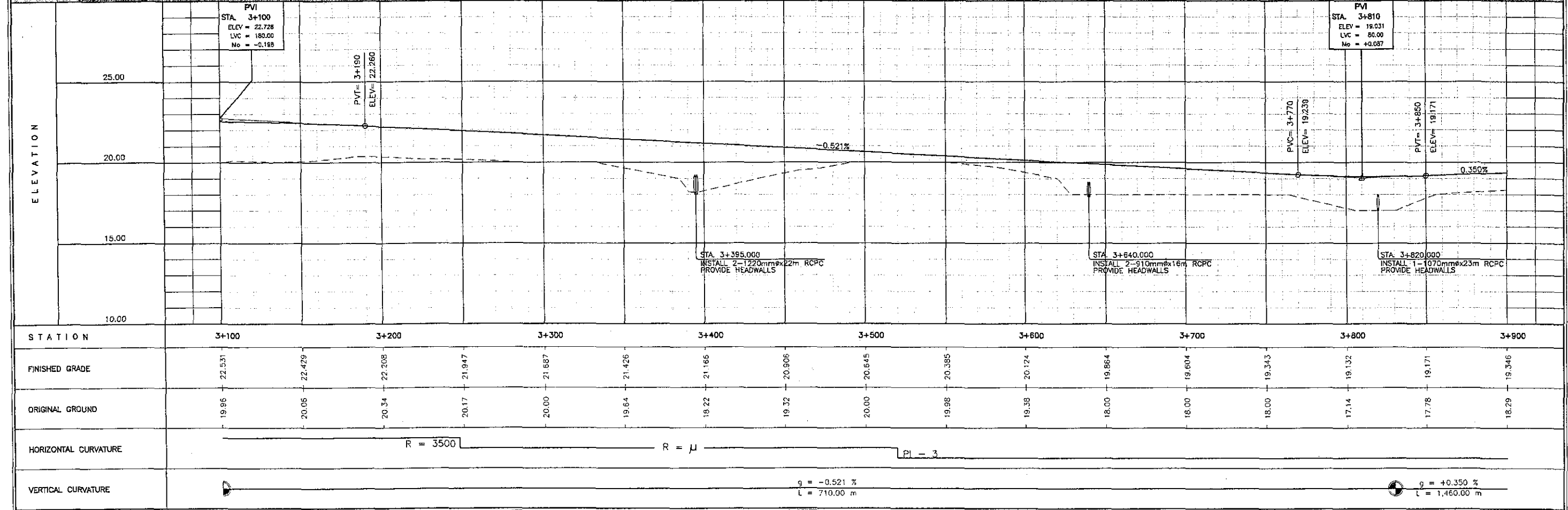


**ELEMENTS OF CURVES**

PI NO.	STATION	COORDINATES		I	R	T	Lc	Es	V(kph)
		NORTHING	EASTING						
3	3 + 812.461	1,185,964.478	499,514.024	09° 34' 24" R	3,500.00	293.086	584.807	12.250	80

THE STUDY ON ROAD NETWORK IMPROVEMENT  
FOR DEVELOPMENT OF REGIONAL GROWTH CENTERS

SCALE :	BACOLOD AIRPORT ACCESS ROAD <b>PLAN AND PROFILE</b> STA. 3+100 - STA. 3+900	DRAWING NO. <b>R-5</b>
HOR. 1:2500 VER. 1:250		



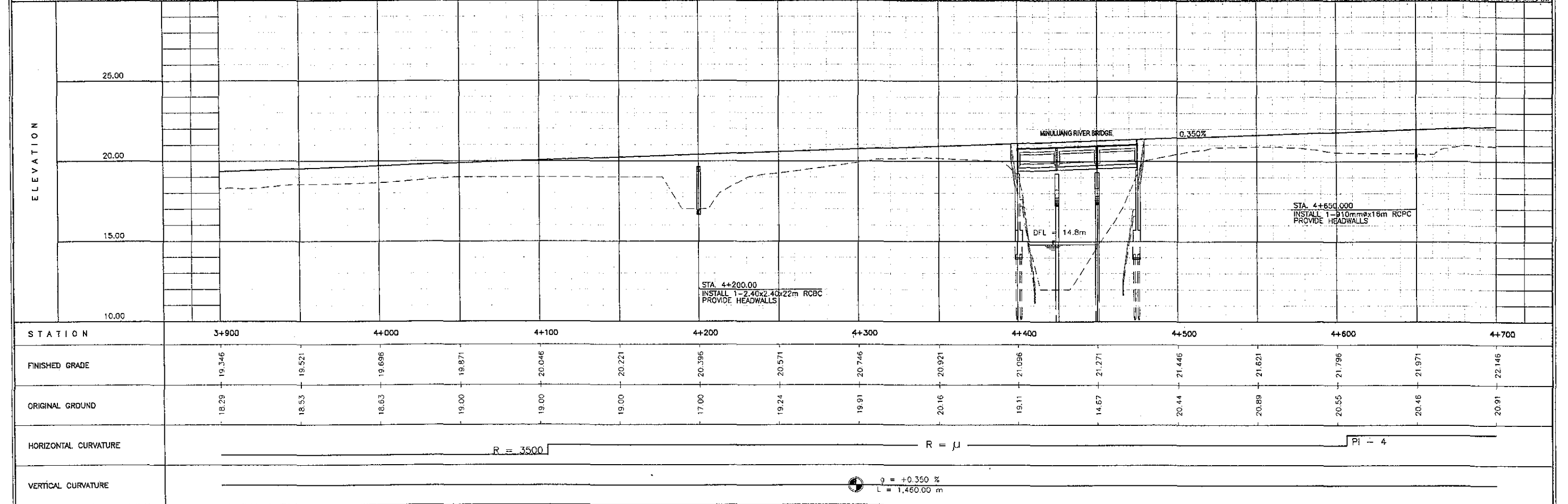
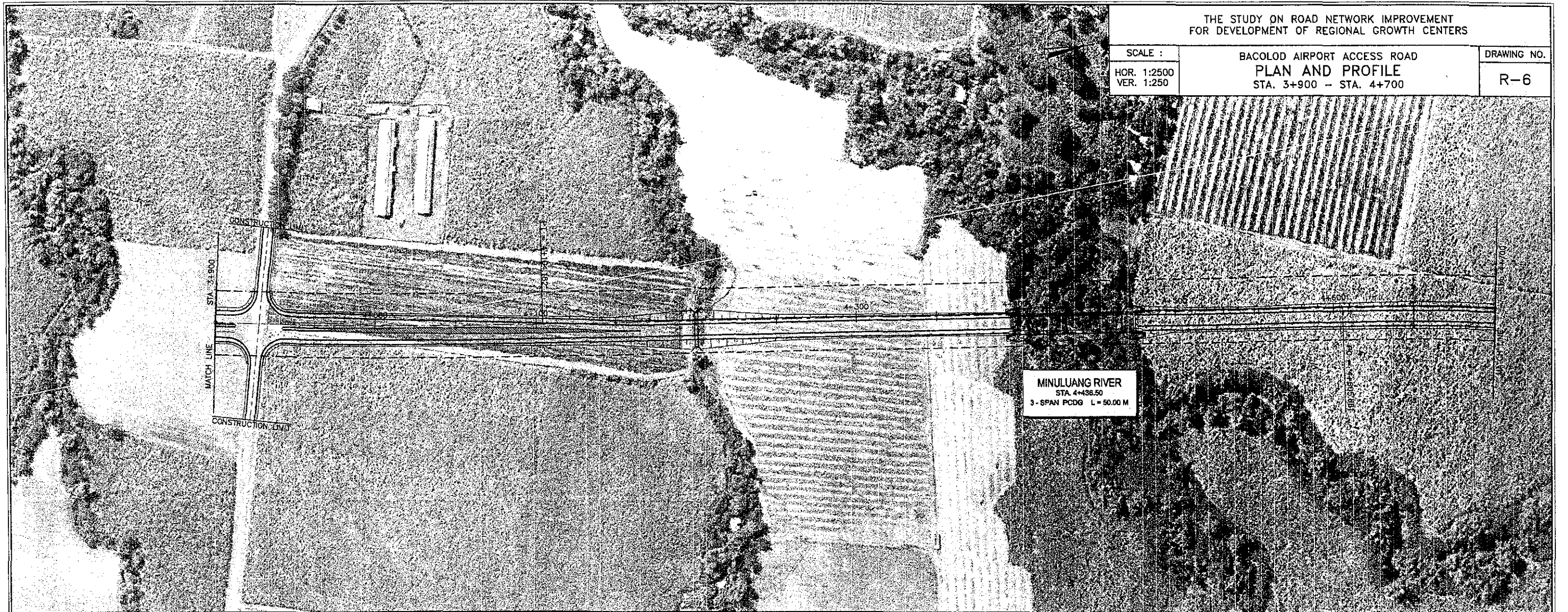


THE STUDY ON ROAD NETWORK IMPROVEMENT  
FOR DEVELOPMENT OF REGIONAL GROWTH CENTERS

SCALE :  
HOR. 1:2500  
VER. 1:250

BACOLOD AIRPORT ACCESS ROAD  
**PLAN AND PROFILE**  
STA. 3+900 - STA. 4+700

DRAWING NO.  
**R-6**





**ELEMENTS OF CURVES**

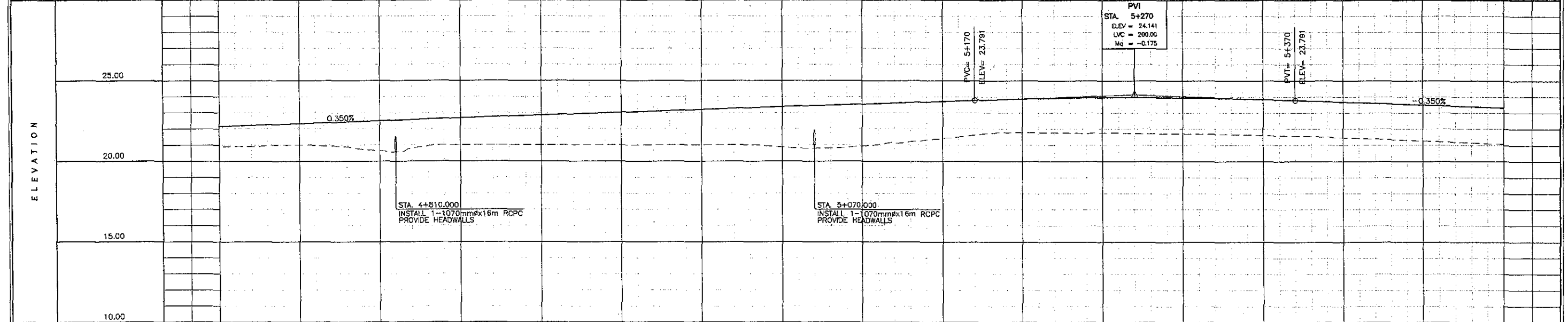
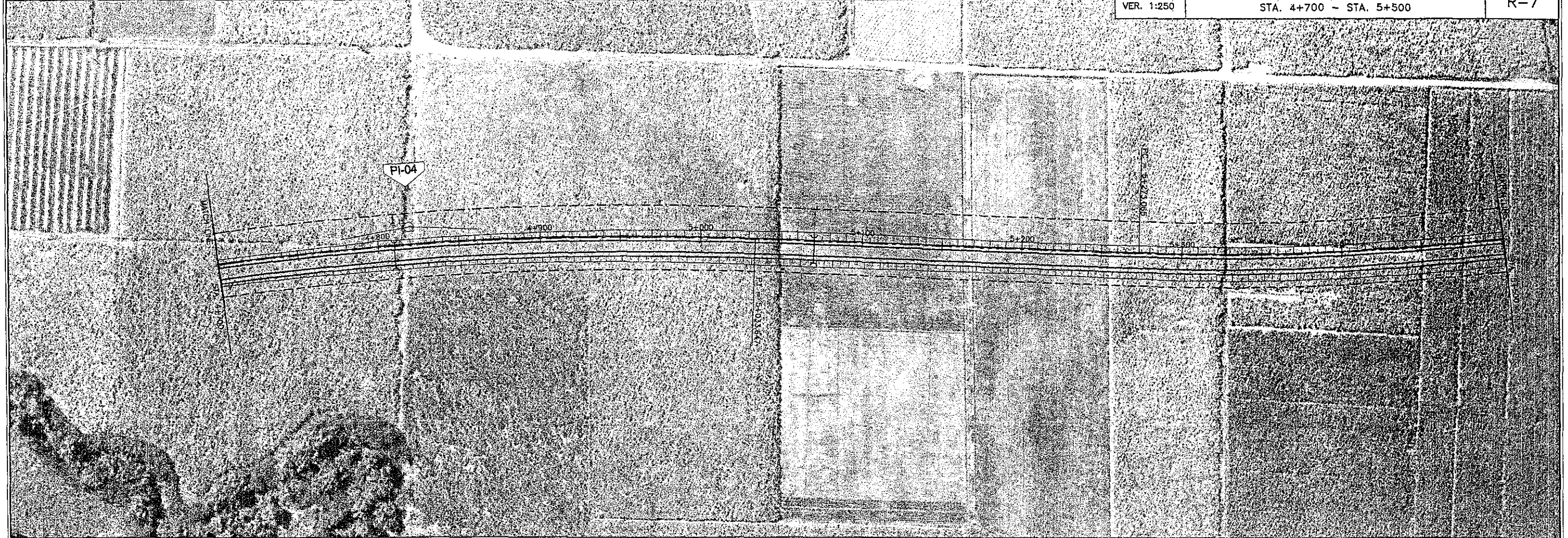
PI NO.	STATION	COORDINATES		I	R	T	Lc	Es	V(kph)
		NORTHING	EASTING						
4	4 + 820.474	1,186,959.357	499,684.488	12' 15' 39" R	2,000.00	214.814	427.986	11.503	80

THE STUDY ON ROAD NETWORK IMPROVEMENT  
FOR DEVELOPMENT OF REGIONAL GROWTH CENTERS

SCALE :  
HOR. 1:2500  
VER. 1:250

BACOLOD AIRPORT ACCESS ROAD  
**PLAN AND PROFILE**  
STA. 4+700 - STA. 5+500

DRAWING NO.  
**R-7**



STATION	4+700	4+800	4+900	5+000	5+100	5+200	5+300	5+400	5+500
FINISHED GRADE	22.146	22.321	22.496	22.671	22.846	23.021	23.196	23.371	23.546
ORIGINAL GROUND	20.91	21.00	20.64	21.00	21.00	21.00	21.00	20.87	20.94
HORIZONTAL CURVATURE	R = 2000				R = ∞				
VERTICAL CURVATURE	g = +0.350 % L = 1,460.00 m				g = -0.350 % L = 1,110.00 m				

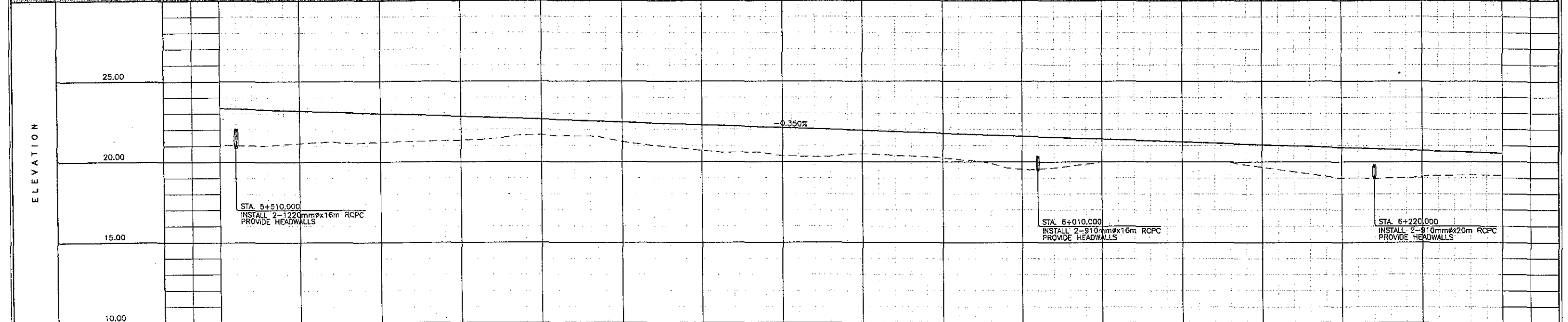


**ELEMENTS OF CURVES**

PI NO.	STATION	COORDINATES		I	R	T	Lc	Es	V(kph)
		NORTHING	EASTING						
5	5 + 678.747	1,187,756.747	500,006.389	30° 16' 04" R	1,500.00	405.682	792.406	53.891	80

THE STUDY ON ROAD NETWORK IMPROVEMENT  
FOR DEVELOPMENT OF REGIONAL GROWTH CENTERS

SCALE :	BACOLOD AIRPORT ACCESS ROAD <b>PLAN AND PROFILE</b> STA. 5+500 - STA. 6+300	DRAWING NO. <b>R-8</b>
HOR. 1:2500 VER. 1:250		



STATION	5+500	5+600	5+700	5+800	5+900	6+000	6+100	6+200	6+300	
FINISHED GRADE	23.336	23.161	22.986	22.811	22.636	22.461	22.286	22.111	21.936	
ORIGINAL GROUND	21.07	21.14	21.21	21.33	21.66	21.25	20.70	20.37	20.48	
HORIZONTAL CURVATURE	R = 1500						R = ∞			
VERTICAL CURVATURE	$G_1 = -0.350\%$ $L = 1,110.00 \text{ m}$									