

**BACOLOD AIRPORT
ACCESS ROAD**

ELEMENTS OF CURVES

PI NO.	STATION	COORDINATES		I	R	T	Lc	Es	V(kph)
		NORTHING	EASTING						
0	0 + 000.000	1,182,318.767	498,407.385						

THE STUDY ON ROAD NETWORK IMPROVEMENT
FOR DEVELOPMENT OF REGIONAL GROWTH CENTERS

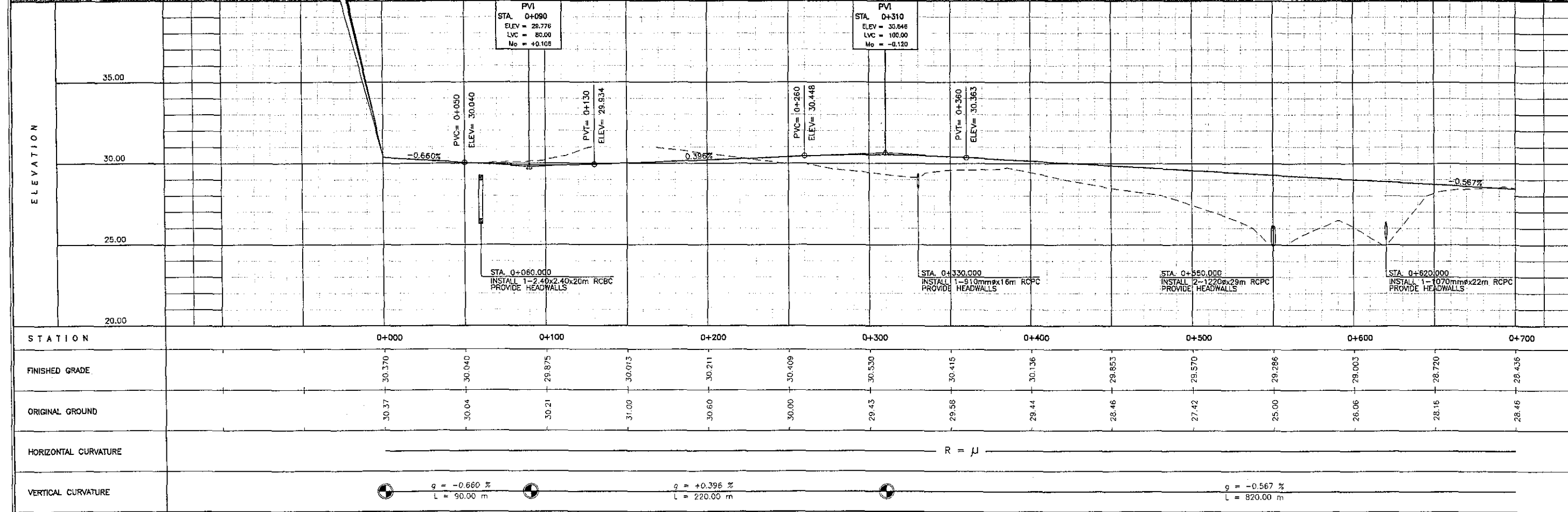
SCALE :
HOR. 1:2500
VER. 1:250

BACOLOD AIRPORT ACCESS ROAD
PLAN AND PROFILE
STA. 0+000 - STA. 0+700

DRAWING NO.
R-1



**BACOLOD AIRPORT
ACCESS ROAD
START OF PROJECT**
STA. 0+000
ELEV. = 30.370
N = 1182318.767
E = 498407.385



PVI
STA. 0+090
ELEV. = 28.776
LVC = 80.00
Mo = +0.108

PVI
STA. 0+310
ELEV. = 30.648
LVC = 100.00
Mo = -0.120

PVC= 0+050
ELEV.= 30.040

PVT= 0+130
ELEV.= 29.834

PVC= 0+250
ELEV.= 30.448

PVT= 0+360
ELEV.= 30.363

STA. 0+060.000
INSTALL 1- 2.40x2.40x20m RCBC
PROVIDE HEADWALLS

STA. 0+330.000
INSTALL 1- 910mmx16m RCPC
PROVIDE HEADWALLS

STA. 0+550.000
INSTALL 2- 1220x29m RCPC
PROVIDE HEADWALLS

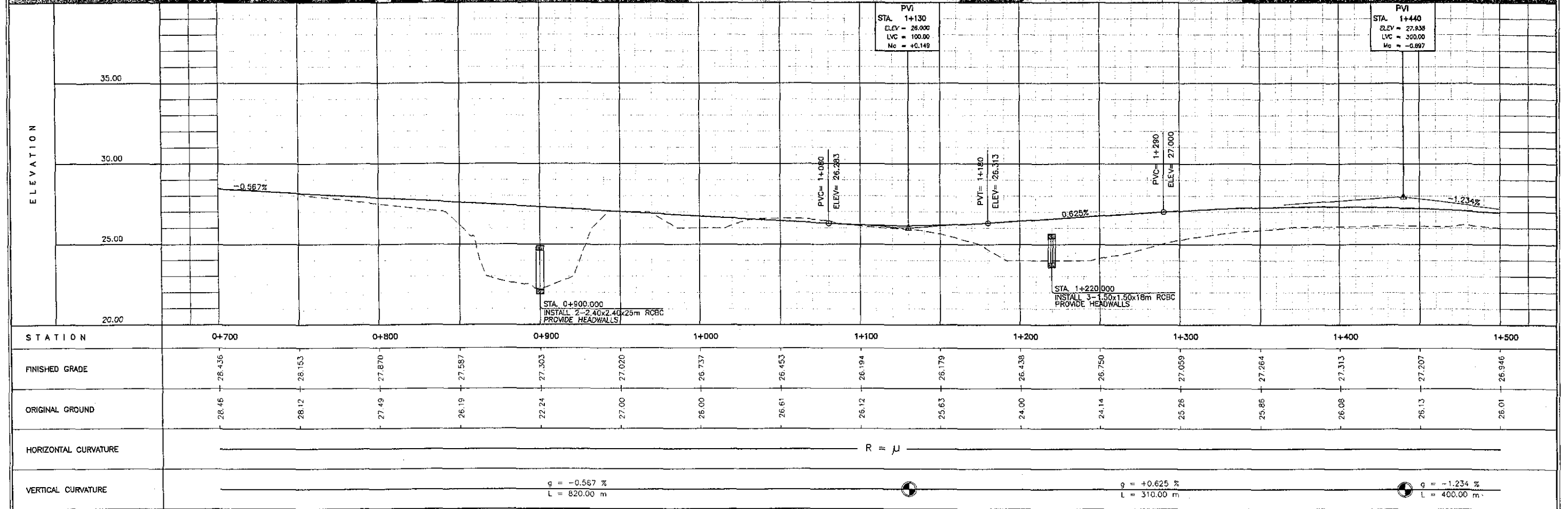
STA. 0+620.000
INSTALL 1- 1070mmx22m RCPC
PROVIDE HEADWALLS

THE STUDY ON ROAD NETWORK IMPROVEMENT
FOR DEVELOPMENT OF REGIONAL GROWTH CENTERS

SCALE :
HOR. 1:2500
VER. 1:250

BACOLOD AIRPORT ACCESS ROAD
PLAN AND PROFILE
STA. 0+700 - STA. 1+500

DRAWING NO.
R-2

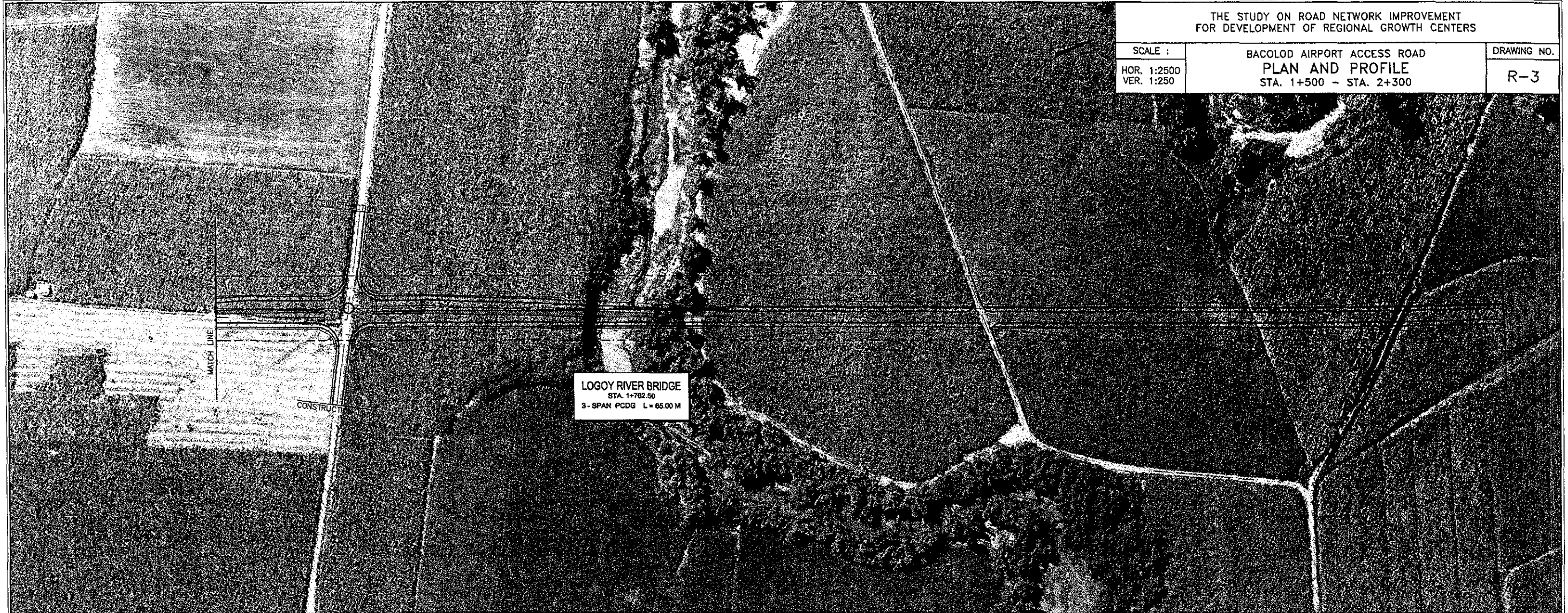


THE STUDY ON ROAD NETWORK IMPROVEMENT
FOR DEVELOPMENT OF REGIONAL GROWTH CENTERS

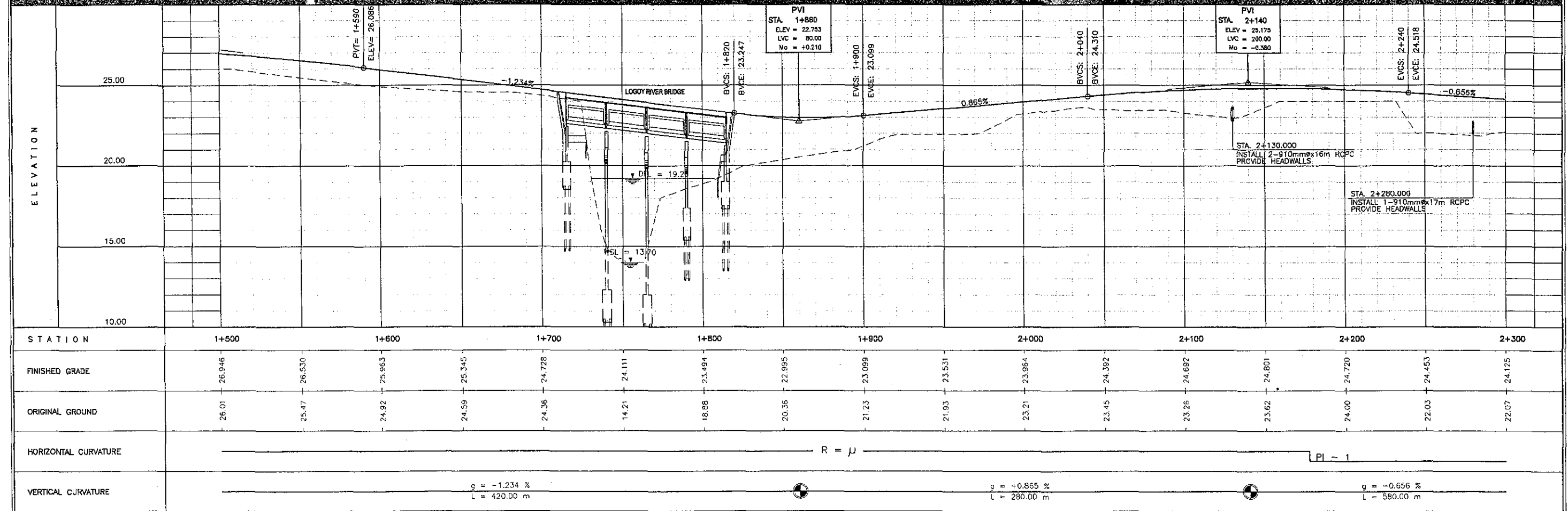
SCALE :
HOR. 1:2500
VER. 1:250

BACOLOD AIRPORT ACCESS ROAD
PLAN AND PROFILE
STA. 1+500 - STA. 2+300

DRAWING NO.
R-3



LOGOY RIVER BRIDGE
STA. 1+762.50
3-SPAN PCDG L=65.00 M



ELEMENTS OF CURVES

PI NO.	STATION	COORDINATES		I	R	T	Lc	Es	V(kph)
		NORTHING	EASTING						
1	2 + 349.065	1,184,559.058	499,113.927	05° 37' 36" R	3,500.00	171.994	343.711	4.223	80
2	3 + 021.063	1,185,216.939	499,252.296	07° 25' 07" R	3,500.00	226.905	453.175	7.347	80

THE STUDY ON ROAD NETWORK IMPROVEMENT
FOR DEVELOPMENT OF REGIONAL GROWTH CENTERS

SCALE :	BACOLOD AIRPORT ACCESS ROAD PLAN AND PROFILE STA. 2+300 - STA. 3+100	DRAWING NO. R-4
HOR. 1:2500 VER. 1:250		

