

ELEMENTS OF CURVES

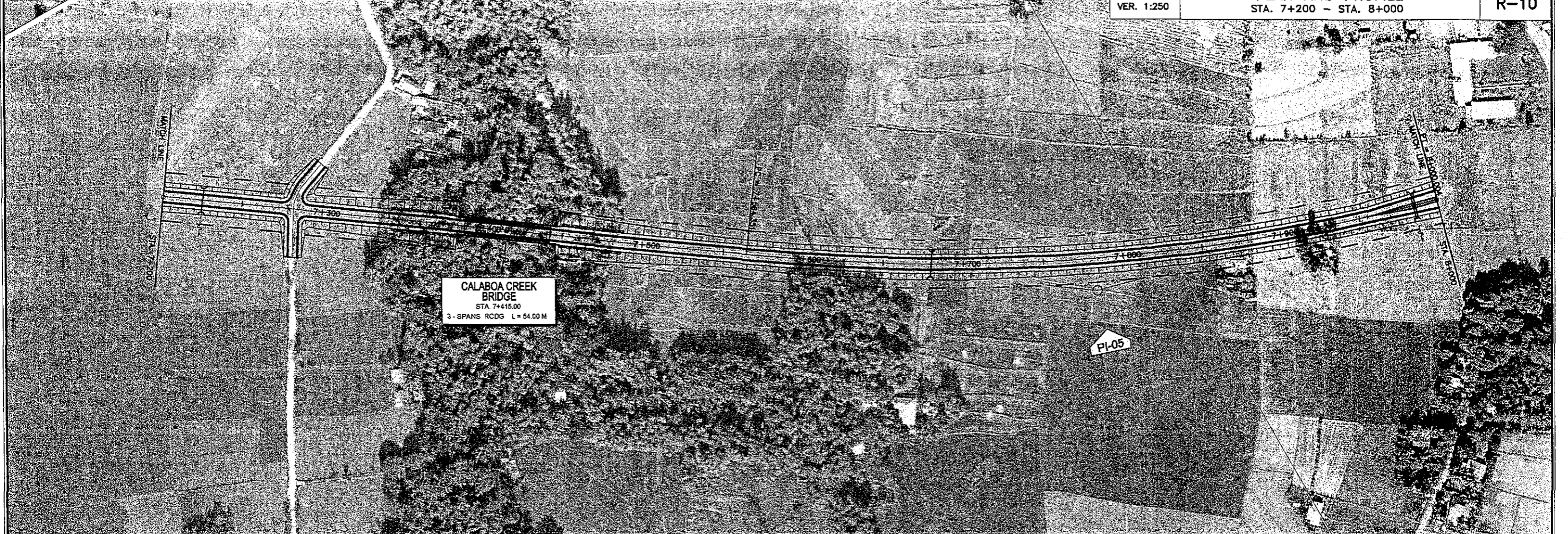
PI NO.	STATION	COORDINATES		I	R	T	Lc	Es	V (kph)
		NORTHING	EASTING						
5	7 + 784.602	1,196,030.399	455,362.891	20° 48' 03.2" L	1200.00	220.25	435.65	20.05	80.00

THE STUDY ON ROAD NETWORK IMPROVEMENT
FOR DEVELOPMENT OF REGIONAL GROWTH CENTERS

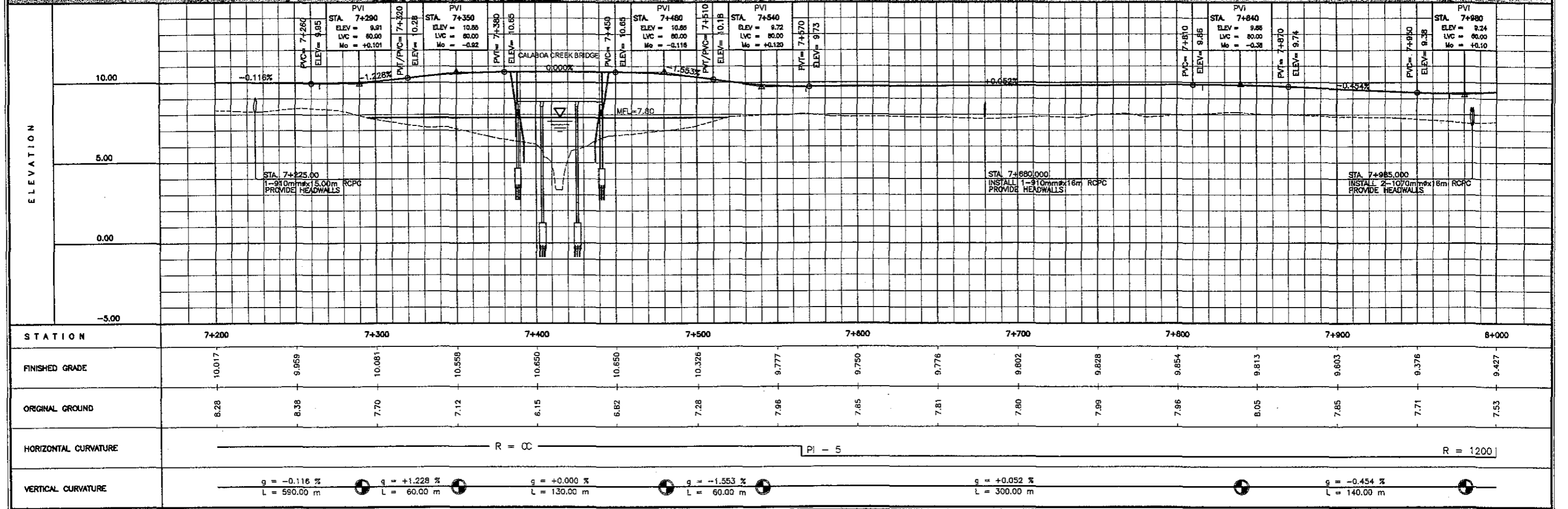
SCALE :
HOR. 1:2500
VER. 1:250

ILOILO R-4 BYPASS ROAD
PLAN AND PROFILE
STA. 7+200 - STA. 8+000

DRAWING NO.
R-10



CALABOA CREEK BRIDGE
STA. 7+415.00
3- SPANS RCDG L= 54.00 M



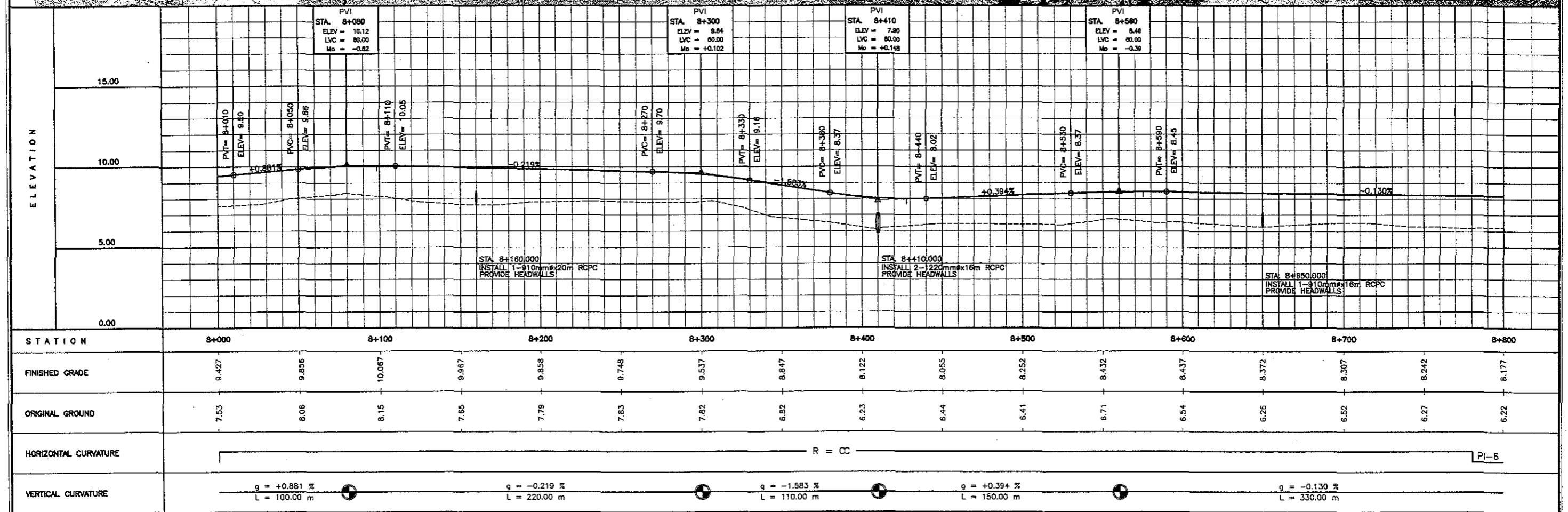
THE STUDY ON ROAD NETWORK IMPROVEMENT
FOR DEVELOPMENT OF REGIONAL GROWTH CENTERS

SCALE :
HOR. 1:2500
VER. 1:250

ILOILO R-4 BYPASS ROAD
PLAN AND PROFILE
STA. 8+000 - STA. 8+800

DRAWING NO.

R-11



ELEMENTS OF CURVES

PI NO.	STATION	COORDINATES		I	R	T	Lc	Es	V (kph)
		NORTHING	EASTING						
6	8 + 957.181	1,197,169.920	455,659.250	10° 07' 41.2" R	2000.00	177.23	353.54	7.84	80.00
7	9 + 480.637	1,197,692.719	455,699.937	22° 31' 15.8" R	1500.00	298.66	589.60	29.44	80.00

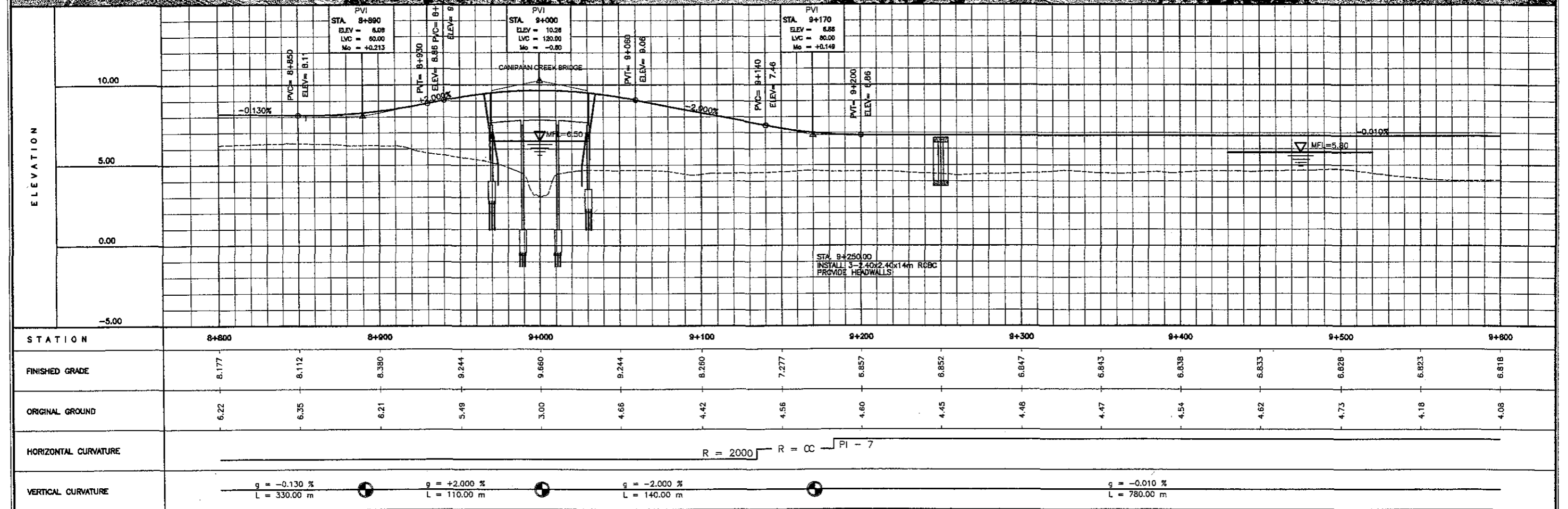
THE STUDY ON ROAD NETWORK IMPROVEMENT
FOR DEVELOPMENT OF REGIONAL GROWTH CENTERS

SCALE :
HOR. 1:2500
VER. 1:250

ILOILO R-4 BYPASS ROAD
PLAN AND PROFILE
STA. 8+800 - STA. 9+600

DRAWING NO.

R-12



ELEMENTS OF CURVES

PI NO.	STATION	COORDINATES		I	R	T	Lc	Es	V (kph)
		NORTHING	EASTING						
8	10 + 366.126	1,198,488.770	456,105.039	19° 00' 47.2" R	1500.00	251.19	497.76	20.89	80.00

THE STUDY ON ROAD NETWORK IMPROVEMENT
FOR DEVELOPMENT OF REGIONAL GROWTH CENTERS

SCALE :
HOR. 1:2500
VER. 1:250

ILOILO R-4 BYPASS ROAD
PLAN AND PROFILE
STA. 9+600 - STA. 10+400

DRAWING NO.
R-13

