

ELEMENTS OF CURVES

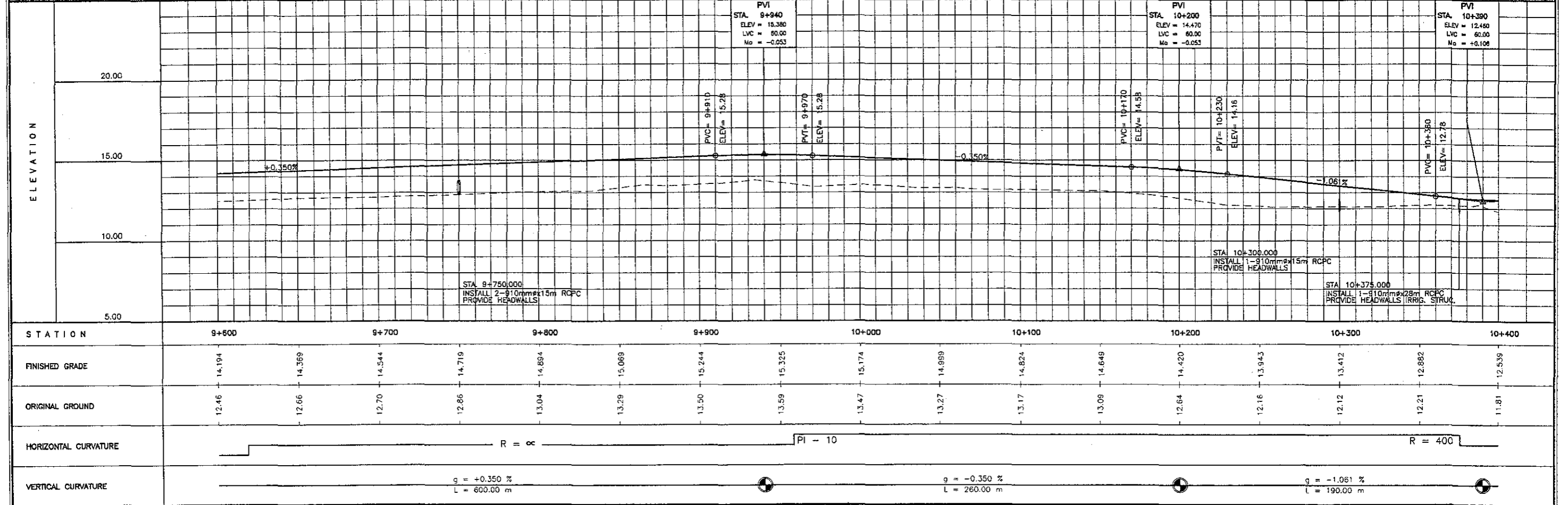
PI NO.	STATION	COORDINATES		I	R	T	Lc	Es	V(kph)
		NORTHING	EASTING						
10	10 + 187.903	1,189,577.210	450,742.060	59° 47' 12.4"	400.00	229.95	417.39	61.39	60

THE STUDY ON ROAD NETWORK IMPROVEMENT
FOR DEVELOPMENT OF REGIONAL GROWTH CENTERS

SCALE :
HOR. 1:2500
VER. 1:250

ILOILO CIRCUMFERENTIAL ROAD NO.1
PLAN AND PROFILE
STA. 9+600 - STA. 10+400

DRAWING NO.
R-13



SCALE :
HOR. 1:2500
VER. 1:250

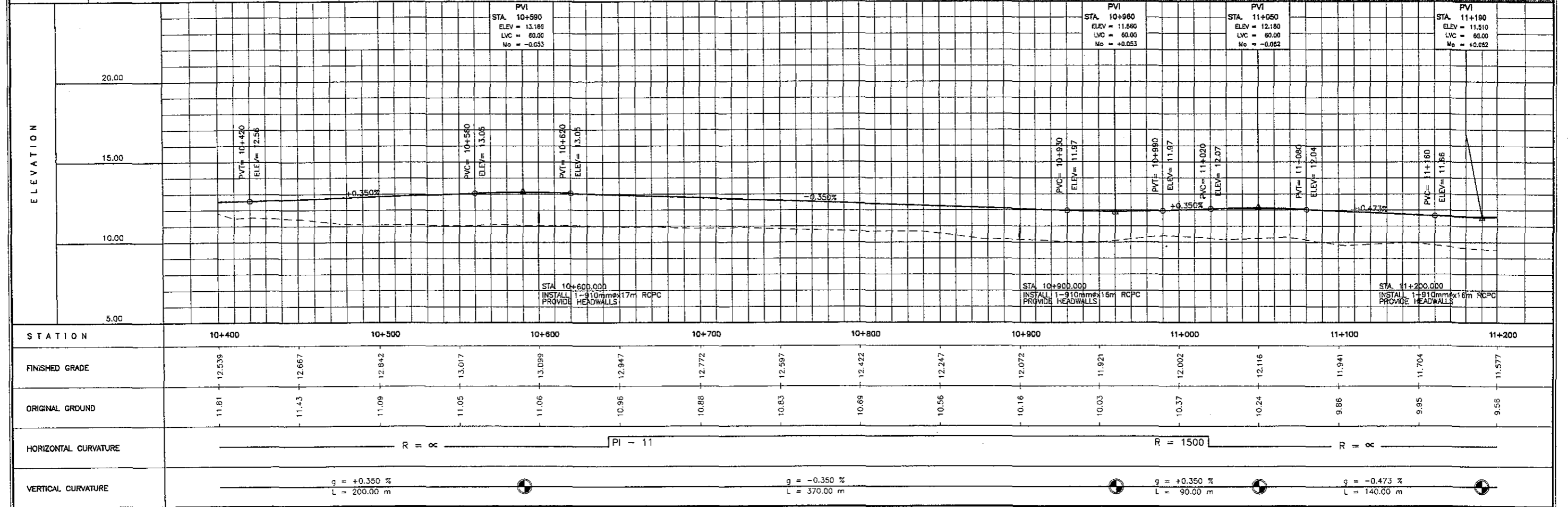
ILOILO CIRCUMFERENTIAL ROAD NO.1
PLAN AND PROFILE
STA. 10+400 - STA. 11+200

DRAWING NO.
R-14



ELEMENTS OF CURVES

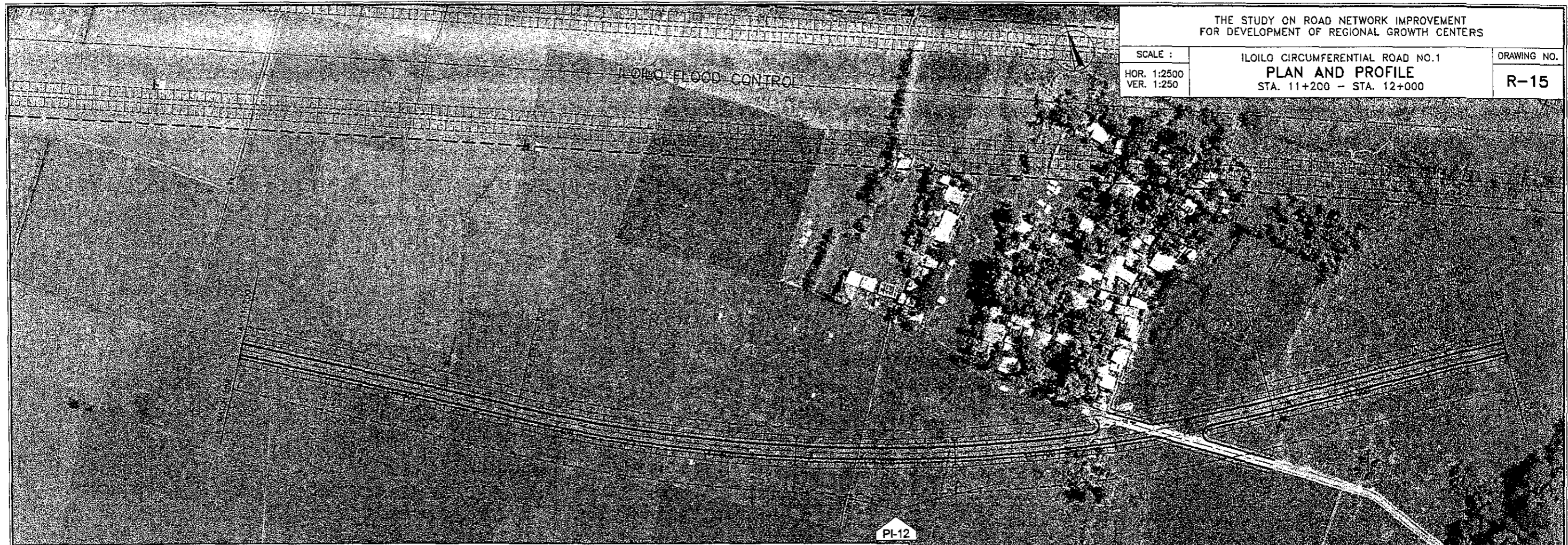
PI NO.	STATION	COORDINATES		I	R	T	Lc	Es	V(kph)
		NORTHING	EASTING						
11	10 + 831.408	1,189,376.841	451,398.159	14° 20' 22.8"	1500.00	188.69	375.41	11.82	60



SCALE :
HOR. 1:2500
VER. 1:250

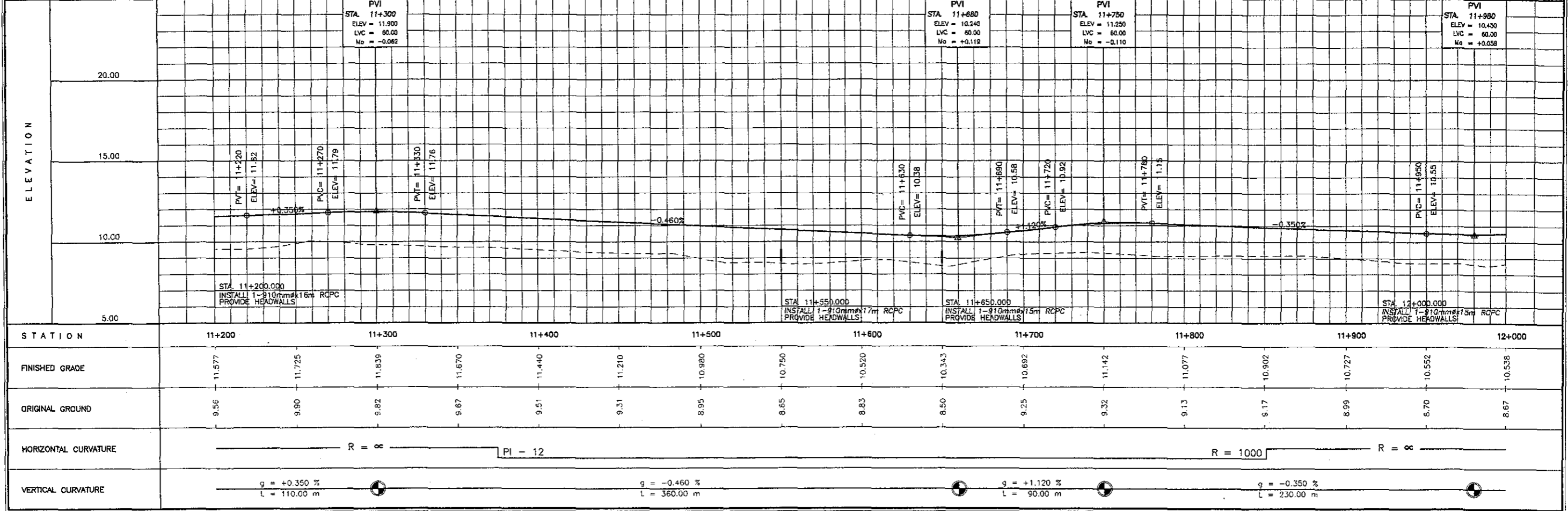
ILOILO CIRCUMFERENTIAL ROAD NO.1
PLAN AND PROFILE
STA. 11+200 - STA. 12+000

DRAWING NO.
R-15



ELEMENTS OF CURVES

PI NO.	STATION	COORDINATES		I	R	T	Lc	Es	V(kph)
		NORTHING	EASTING						
12	11 + 617.238	1,188,967.305	452,071.146	27° 18' 01.2"	1000.00	242.85	476.48	29.07	60



STATION	11+300	11+680	11+750	11+980
PVI	11+300	11+680	11+750	11+980
ELEV	11.900	10.240	11.250	10.430
LVC	60.00	60.00	60.00	60.00
Mo	-0.062	+0.112	-0.110	+0.058

STA. 11+200.000
INSTALL 1-910mmx16m RCPC
PROVIDE HEADWALLS

STA. 11+550.000
INSTALL 1-910mmx17m RCPC
PROVIDE HEADWALLS

STA. 11+650.000
INSTALL 1-910mmx15m RCPC
PROVIDE HEADWALLS

STA. 12+000.000
INSTALL 1-910mmx15m RCPC
PROVIDE HEADWALLS

SCALE :
HOR. 1:2500
VER. 1:250

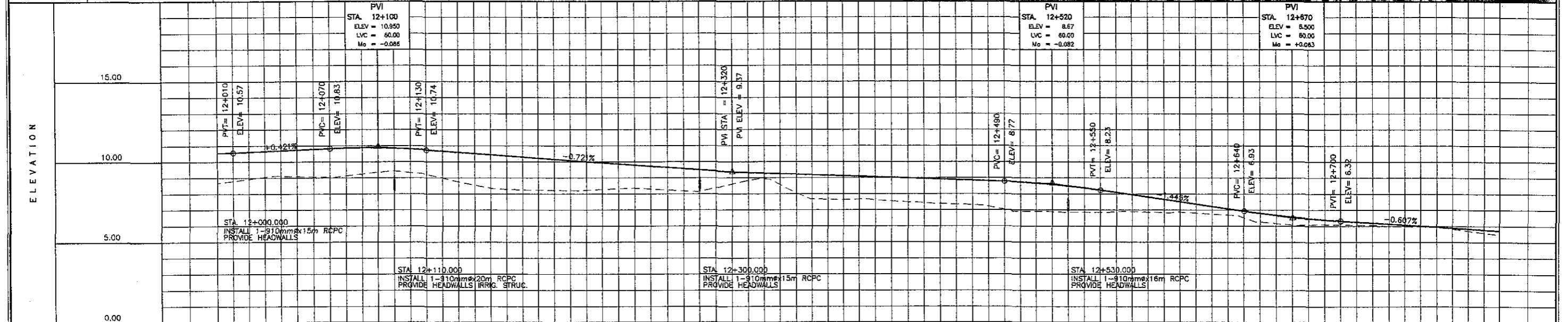
ILOILO CIRCUMFERENTIAL ROAD NO.1
PLAN AND PROFILE
STA. 12+000 - STA. 12+800

DRAWING NO.
R-16



ELEMENTS OF CURVES

PI NO.	STATION	COORDINATES		I	R	T	Lc	Es	V(kph)
		NORTHING	EASTING						
13	12 + 137.562	1,188,930.166	452,599.390	24° 02' 44.3"	550.00	117.14	230.82	12.33	60
14	12 + 416.372	1,188,797.361	452,848.454	25° 47' 59.2"	713.84	163.49	321.44	18.48	60
15	12 + 625.896	1,188,788.852	453,063.354	19° 30' 38"	300.00	51.58	102.16	4.40	60



STATION	12+000	12+100	12+200	12+300	12+400	12+500	12+600	12+700	12+800								
FINISHED GRADE	10.538	10.742	10.867	10.593	10.232	9.872	9.511	9.262	8.912								
ORIGINAL GROUND	8.67	9.06	9.35	8.75	8.23	8.32	8.16	8.56	7.67								
HORIZONTAL CURVATURE	PI - 13			R = 550		PI - 14		R = 713.84		PI - 15		R = 300		R = ∞		PI - 16	
VERTICAL CURVATURE	g = +0.421 % L = 120.00 m			g = -0.721 % L = 220.00 m		g = -0.350 % L = 200.00 m		g = -1.445 % L = 150.00 m		g = -0.607 % L = 280.00 m							