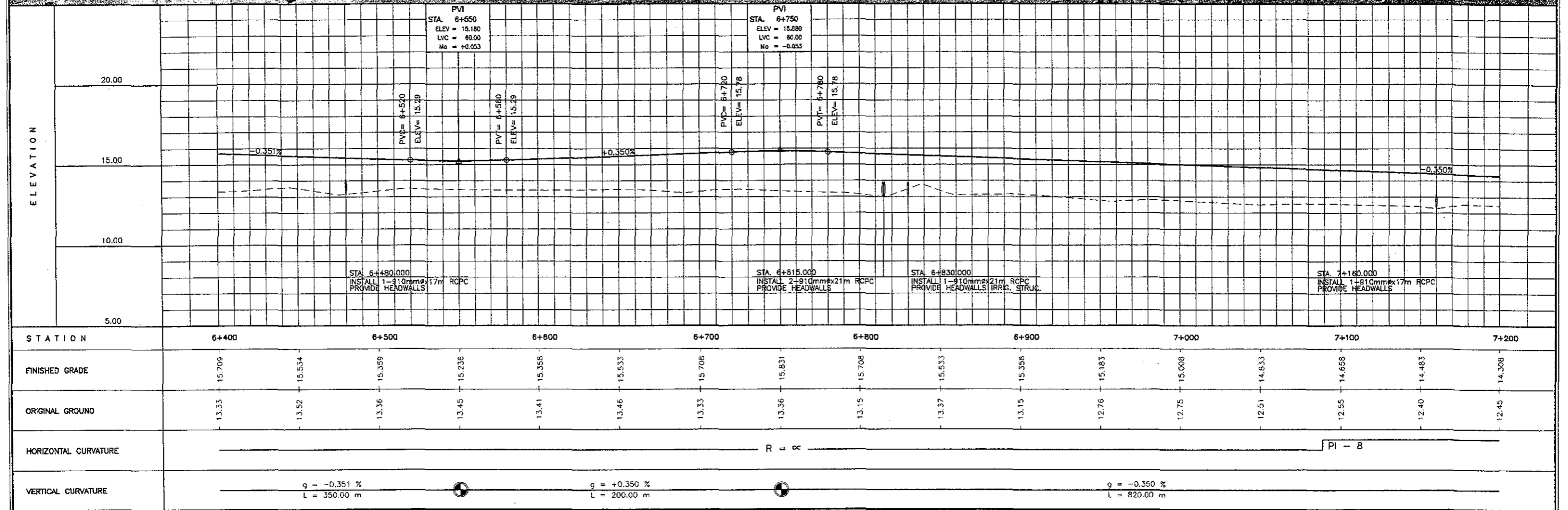


SCALE :
HOR. 1:2500
VER. 1:250

ILOILO CIRCUMFERENTIAL ROAD NO.1
PLAN AND PROFILE
STA. 6+400 - STA. 7+200

DRAWING NO.
R-9



ELEMENTS OF CURVES

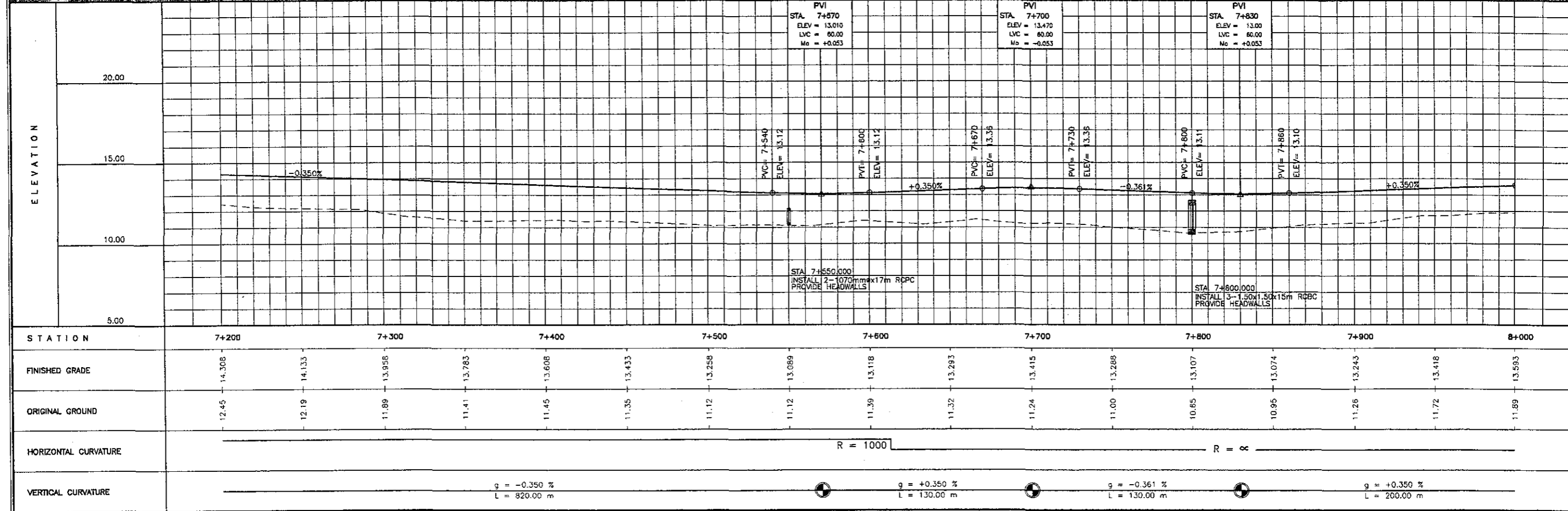
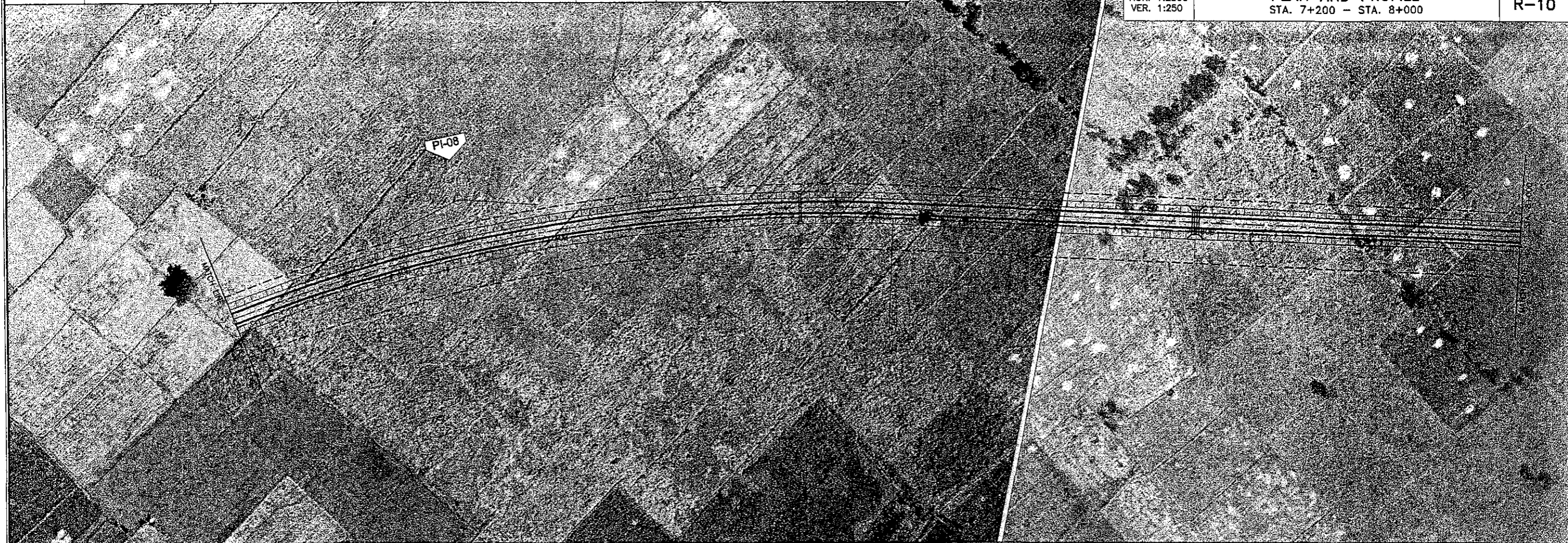
PI NO.	STATION	COORDINATES		I	R	T	Lc	Es	V(kph)
		NORTHING	EASTING						
8	7 + 356.711	1,188,682.671	448,136.302	30° 01' 18.3"	1000.00	268.15	523.98	35.33	60

THE STUDY ON ROAD NETWORK IMPROVEMENT
FOR DEVELOPMENT OF REGIONAL GROWTH CENTERS

SCALE :
HOR. 1:2500
VER. 1:250

ILOILO CIRCUMFERENTIAL ROAD NO.1
PLAN AND PROFILE
STA. 7+200 - STA. 8+000

DRAWING NO.
R-10



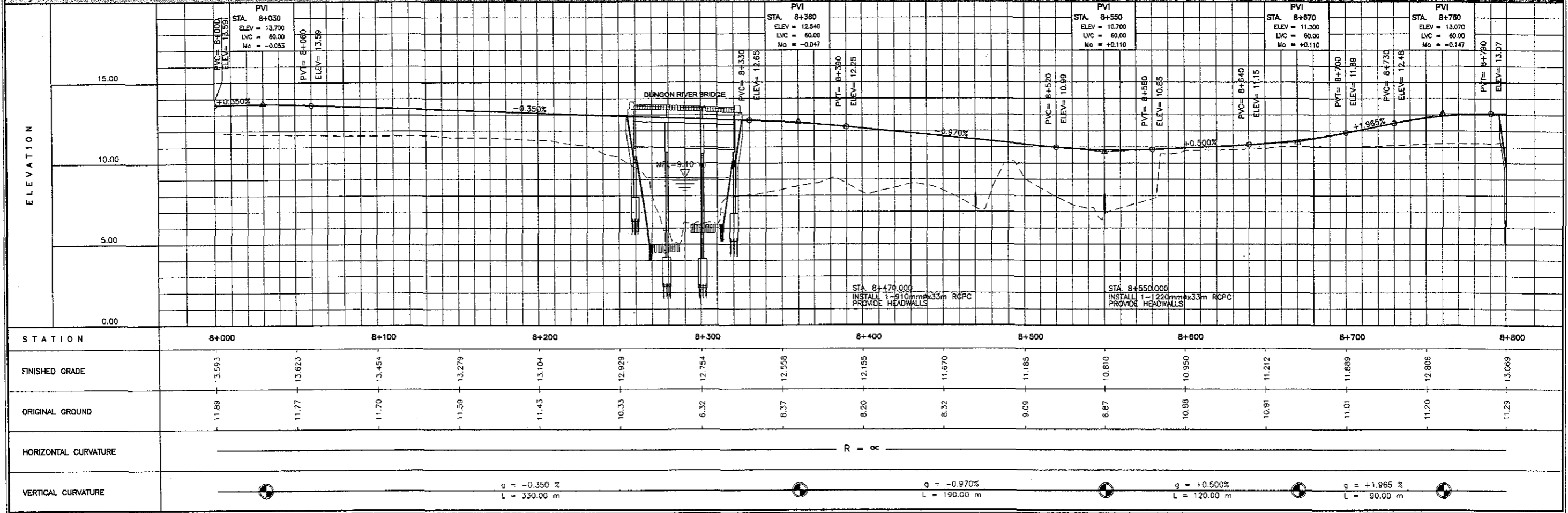
SCALE :
HOR. 1:2500
VER. 1:250

ILOILO CIRCUMFERENTIAL ROAD NO.1
PLAN AND PROFILE
STA. 8+000 - STA. 8+800

DRAWING NO.
R-11



DUNGON RIVER
STA. 8+290.00
3- SPANS RCCG L = 62.00 M



ELEMENTS OF CURVES

PI NO.	STATION	COORDINATES		I	R	T	Lc	Es	V(kph)
		NORTHING	EASTING						
9	9 + 329.855	1,188,981.747	450,099.118	34° 08' 27.1"	1000.00	307.08	595.87	46.09	60

THE STUDY ON ROAD NETWORK IMPROVEMENT
FOR DEVELOPMENT OF REGIONAL GROWTH CENTERS

SCALE :
HOR. 1:2500
VER. 1:250

ILOILO CIRCUMFERENTIAL ROAD NO.1
PLAN AND PROFILE
STA. 8+800 - STA. 9+600

DRAWING NO.
R-12

