

ELEMENTS OF CURVES

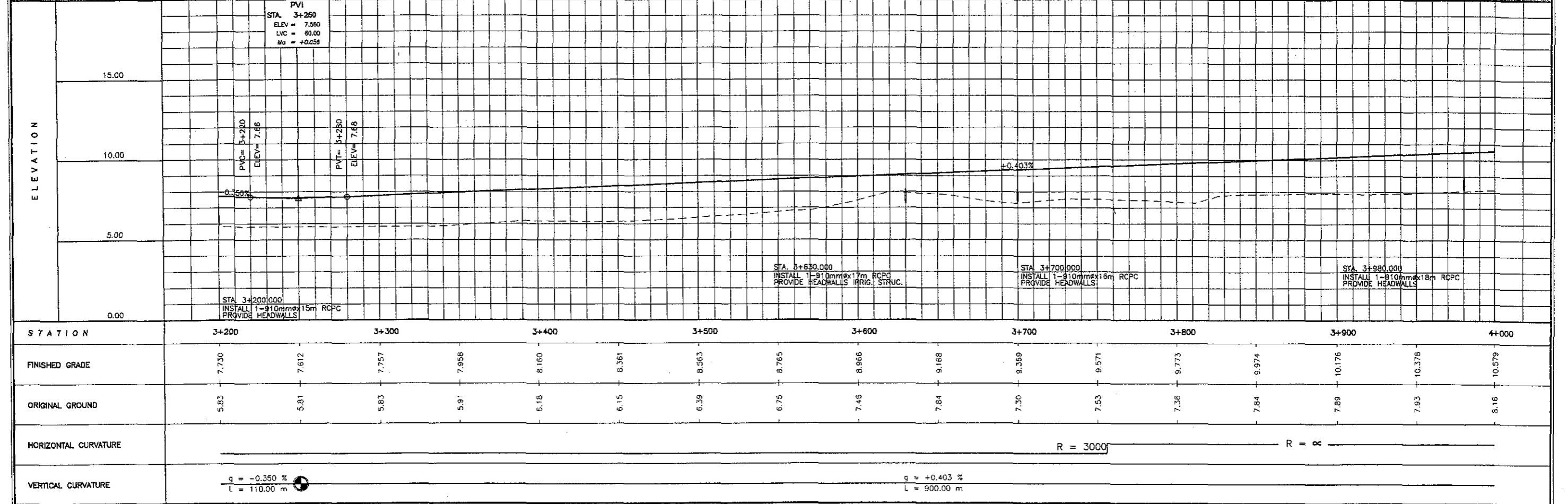
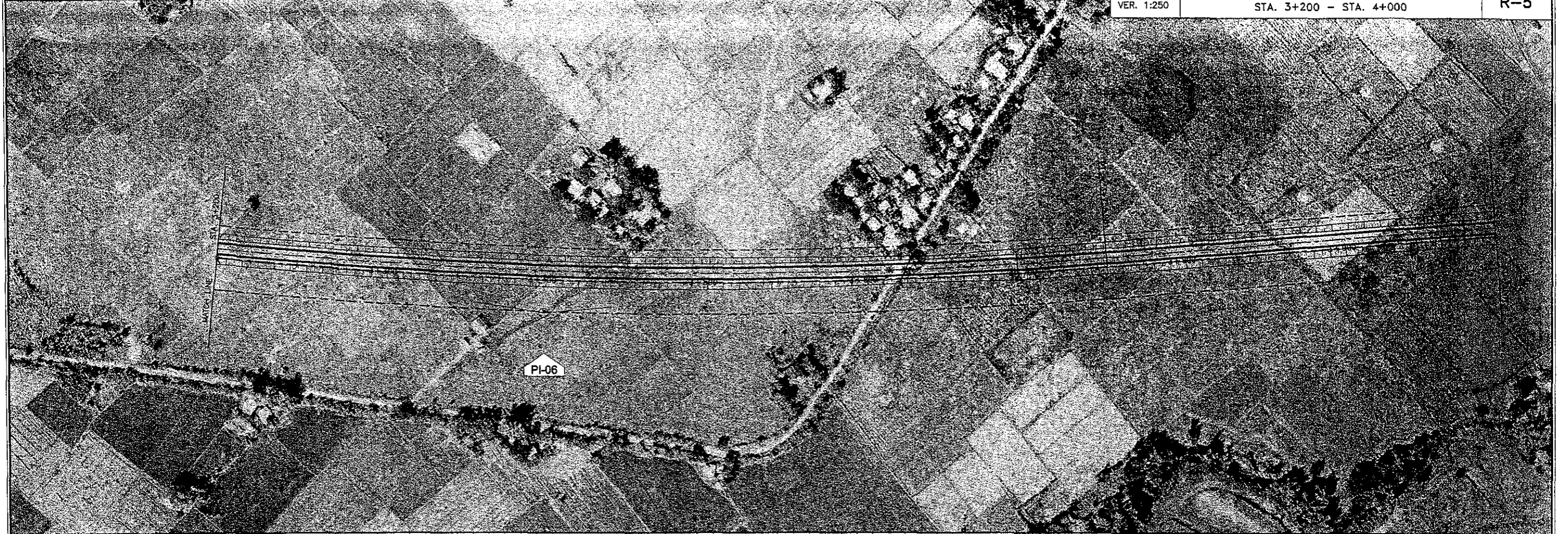
PI NO.	STATION	COORDINATES		I	R	T	Lc	Es	V(kph)
		NORTHING	EASTING						
6	3 + 406.284	1,185,470.490	447,152.520	13° 25' 08.9"	3000.00	352.93	702.62	20.69	60

THE STUDY ON ROAD NETWORK IMPROVEMENT
FOR DEVELOPMENT OF REGIONAL GROWTH CENTERS

SCALE :
HOR. 1:2500
VER. 1:250

ILOILO CIRCUMFERENTIAL ROAD NO.1
PLAN AND PROFILE
STA. 3+200 - STA. 4+000

DRAWING NO.
R-5



PVI
STA. 3+250
ELEV = 7.580
LVC = 60.00
Ma = +0.658

PVC = 3+200
ELEV = 7.86

PVT = 3+280
ELEV = 7.68

STA. 3+200.000
INSTALL 1-910mmx15m RCPC
PROVIDE HEADWALLS

STA. 3+650.000
INSTALL 1-910mmx17m RCPC
PROVIDE HEADWALLS IRRIG. STRUC.

STA. 3+700.000
INSTALL 1-910mmx16m RCPC
PROVIDE HEADWALLS

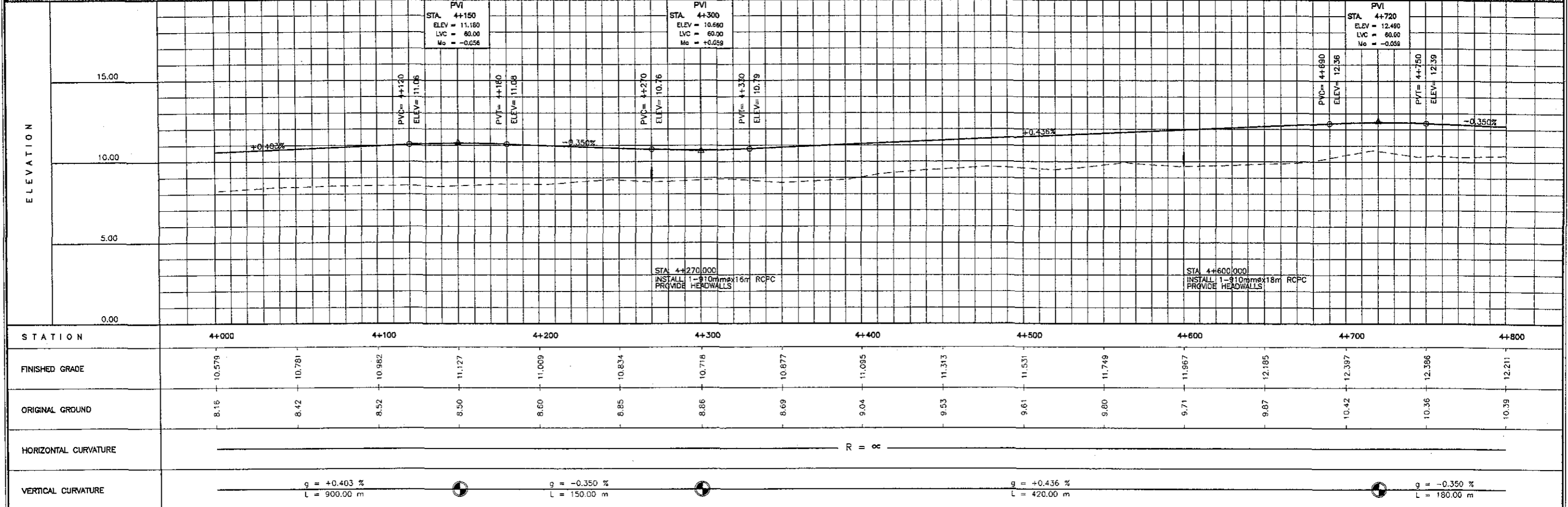
STA. 3+980.000
INSTALL 1-910mmx18m RCPC
PROVIDE HEADWALLS

THE STUDY ON ROAD NETWORK IMPROVEMENT
FOR DEVELOPMENT OF REGIONAL GROWTH CENTERS

SCALE :
HOR. 1:2500
VER. 1:250

ILOILO CIRCUMFERENTIAL ROAD NO.1
PLAN AND PROFILE
STA. 4+000 - STA. 4+800

DRAWING NO.
R-6



STA. 4+270.000
INSTALL 1-910mmx16m RCPC
PROVIDE HEADWALLS

STA. 4+600.000
INSTALL 1-910mmx18m RCPC
PROVIDE HEADWALLS

ELEMENTS OF CURVES

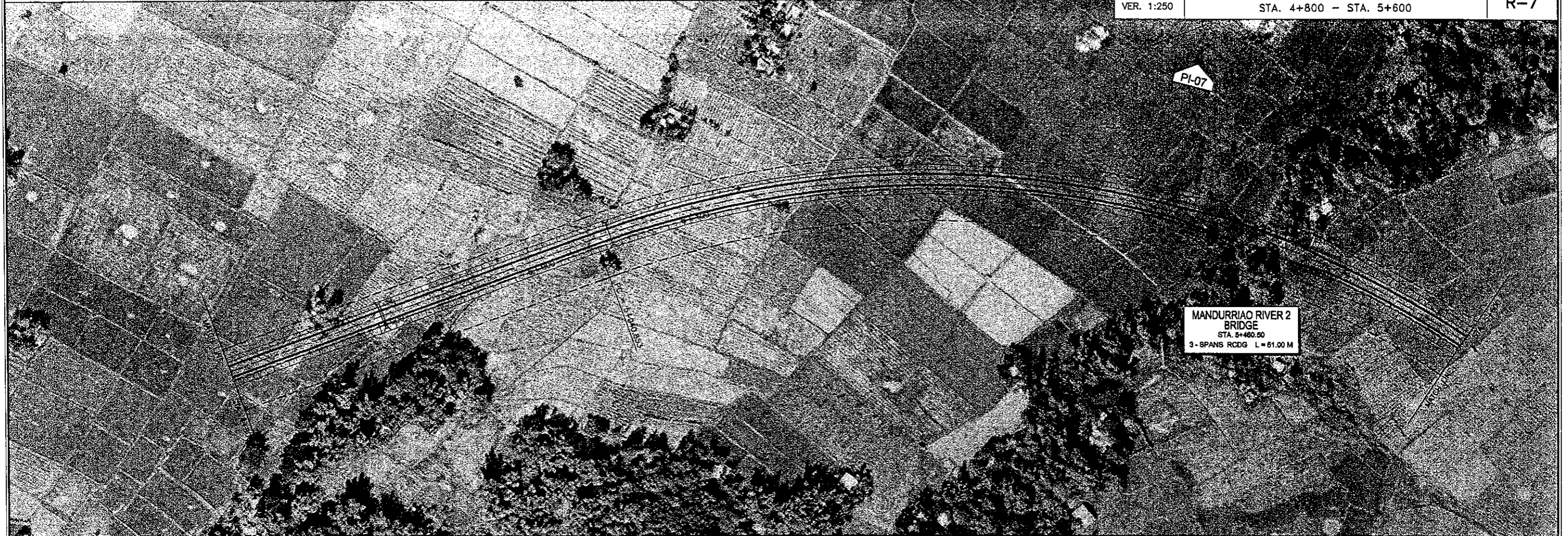
PI NO.	STATION	COORDINATES		I	R	T	Lc	Es	V(kph)
		NORTHING	EASTING						
7	5 + 445.080	1,187,427.180	446,568.370	67° 56' 13.7"	600.00	404.23	711.44	123.46	60

THE STUDY ON ROAD NETWORK IMPROVEMENT
FOR DEVELOPMENT OF REGIONAL GROWTH CENTERS

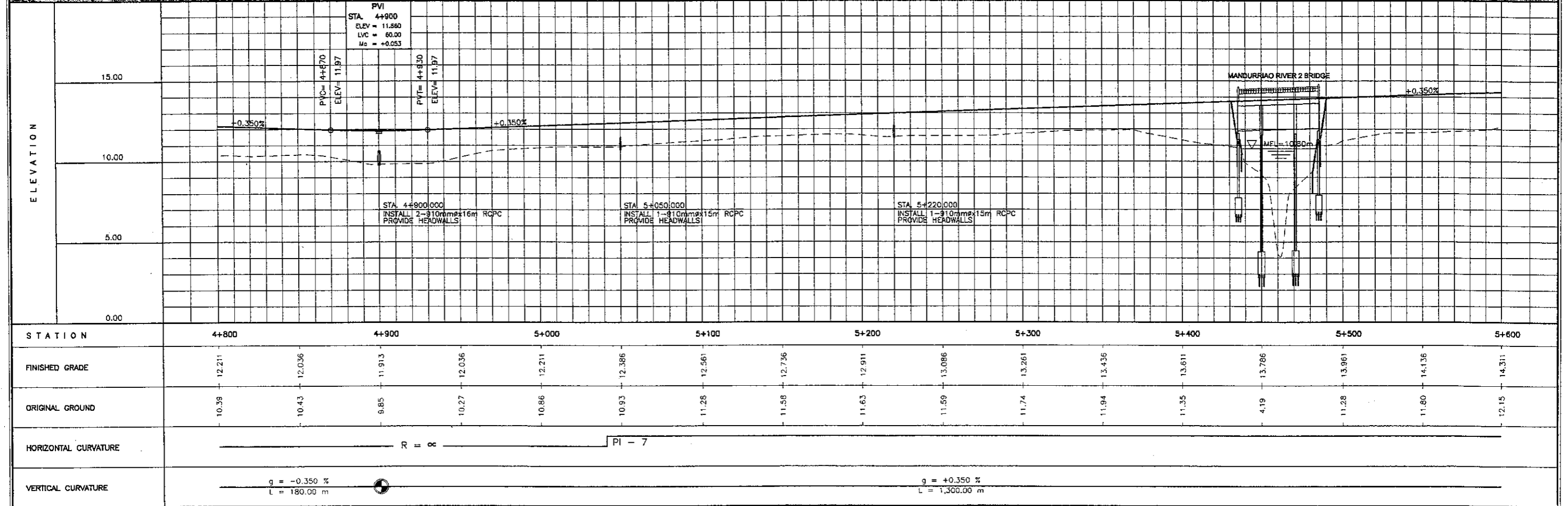
SCALE :
HOR. 1:2500
VER. 1:250

ILOILO CIRCUMFERENTIAL ROAD NO.1
PLAN AND PROFILE
STA. 4+800 - STA. 5+600

DRAWING NO.
R-7



MANDURRIAO RIVER 2 BRIDGE
STA. 5+460.60
3- SPANS RCDG L=61.00 M



PVI
STA. 4+900
ELEV = 11.860
LVC = 60.00
Ma = +0.053

PVI
STA. 4+870
ELEV = 11.97

PVI
STA. 4+930
ELEV = 11.97

STA. 4+900.000
INSTALL 2-910mmx16m RCPC
PROVIDE HEADWALLS

STA. 5+050.000
INSTALL 1-910mmx16m RCPC
PROVIDE HEADWALLS

STA. 5+220.000
INSTALL 1-910mmx15m RCPC
PROVIDE HEADWALLS

MANDURRIAO RIVER 2 BRIDGE

+0.350%

MFL=10.80m

THE STUDY ON ROAD NETWORK IMPROVEMENT
FOR DEVELOPMENT OF REGIONAL GROWTH CENTERS

SCALE :
HOR. 1:2500
VER. 1:250

ILOILO CIRCUMFERENTIAL ROAD NO.1
PLAN AND PROFILE
STA. 5+600 - STA. 6+400

DRAWING NO.
R-8

