


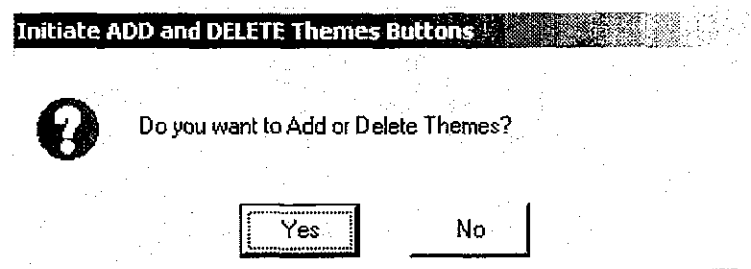
## 5 ADDING OR DELETING THEMES

This chapter guides the user on how to add or delete a theme/themes when required, and helps the user to perform functions or manoeuvre with the information shown on the views.

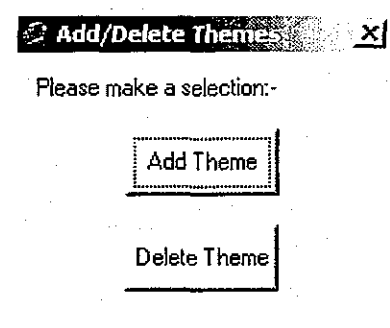
### 5.1 Initiate Add or Delete Function

#### Step 1: To add theme

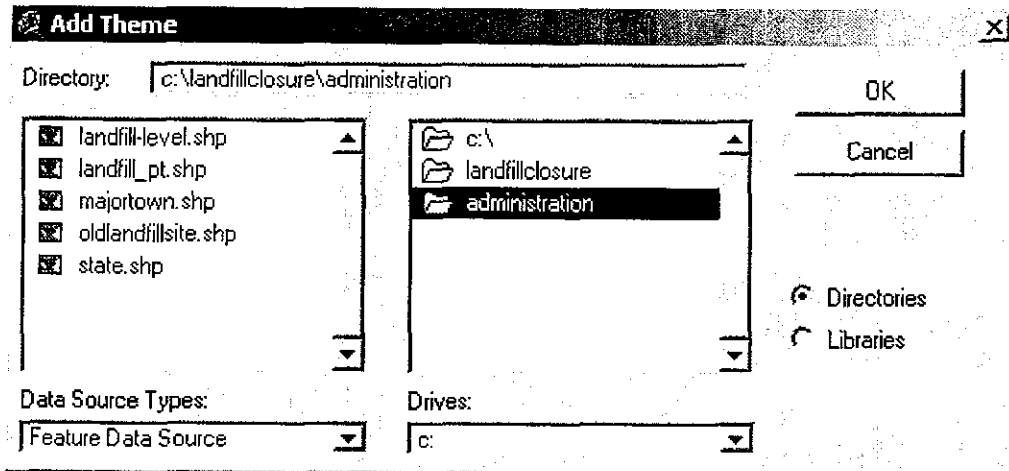
1. Activate the **Information Display View** on your monitor. Then click **Initiate**  button.
2. The **Initiate Add and Delete Themes Buttons** dialog box appears.



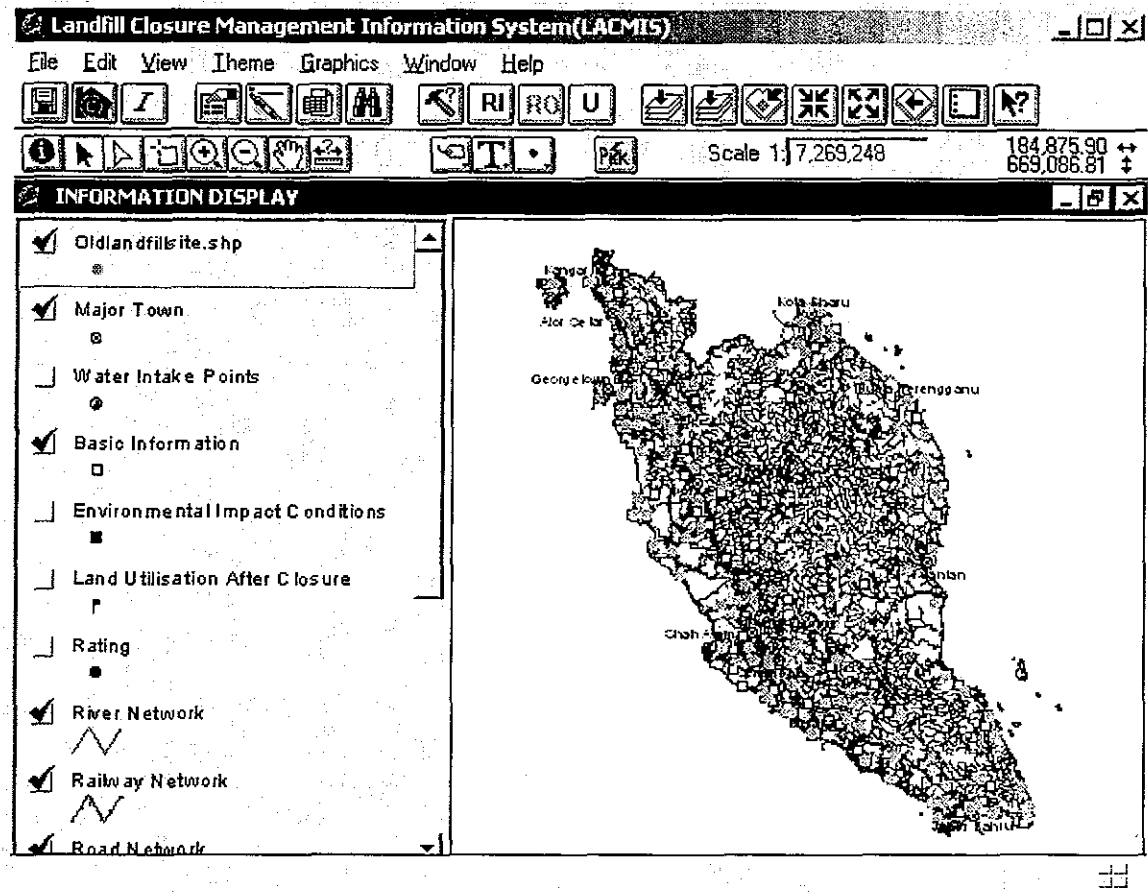
3. The **Add/Delete Themes** dialog box will appear to show the buttons of **Add Theme** and **Delete Theme**.



4. When you click **Add Theme** button, the **Add Theme** dialog box will appear for you to select the theme that you want to add to the **Information Display View**. Click on the **oldlandfillsite.shp** file. The path for this example is **c:\landfillclosure\administration\oldlandfillsite.shp** Click **OK**.

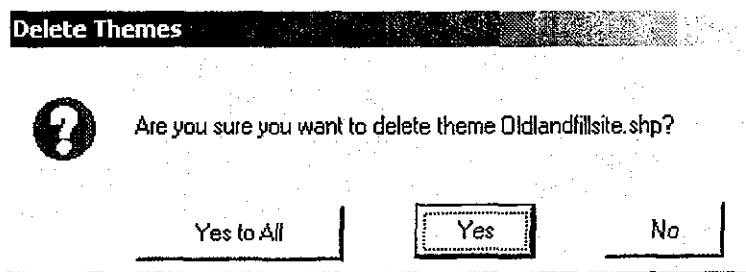


- The **oldlandfillsite.shp** will be shown in the **Information Display View**. You need to check the box for the theme to see the features on the map. Click outside the check box area to make the **oldlandfillsite.shp** theme active. You will notice that the active theme appears highlighted (raised up) in the **Table of Contents**.



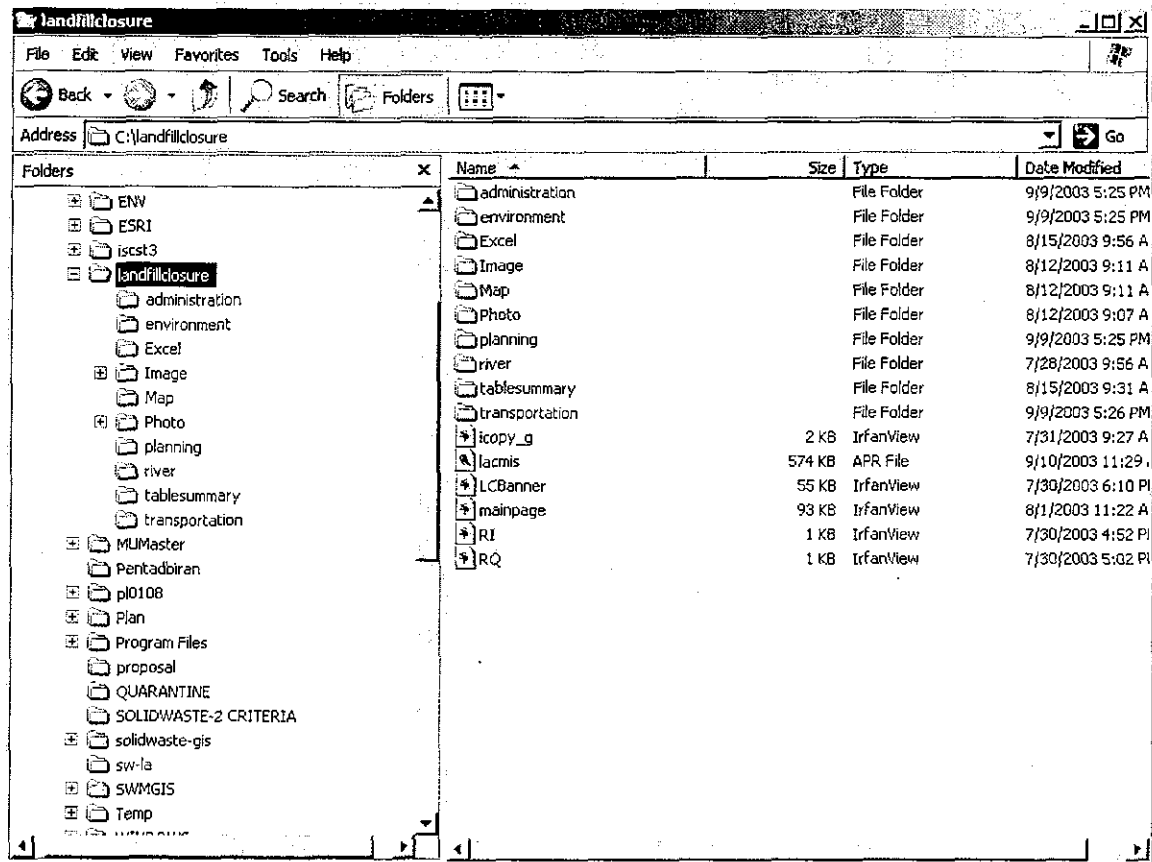
**Step 2: To delete theme**

1. You can repeat *No. 1 to No. 3* from the **Section 5.1**. Then click the **Delete Theme** button. The **Delete Themes** dialog box will appear. The dialog box will prompt you for the theme to be deleted. Click **Yes**. You can delete more than one theme at any one time by using the **SHIFT** key and selecting more than one theme.



## 6 DIRECTORY OF LACMIS

The directory that has been created in LACMIS is under **harddisk C**. The folder **c:\landfillclosure** is the main title followed by subfolder in the landfillclosure directory. The folder landfillclosure cannot be moved to other place except in the C drive. You can create subfolders in the landfillclosure folder. The appropriate files created will be placed in its appropriate subfolder or folder. For example, the table summary (**query1.dbf**) that has been created can be placed in tablesummary folder. To export the table summary (**query1.dbf**), the file can be saved in **Excel** folder as the file is open in Excel after it has being exported.



## **7 LIMITATIONS OF LACMIS**

LACMIS is specifically designed to guide the user to view and interface with the solid waste data captured for all local authority areas in Peninsular Malaysia. To operate LACMIS, the user is advised of the following limitations of the application:

- This application operates on Windows 2000 and any other operating system above it.
- LACMIS is customised in accordance with the needs and requirements of the user specified at the point of its commissioning, and therefore, cannot be re-customised.
- Whilst this system allows the user to create, export and edit the database and maps, however, it does not facilitate new or additional charts to be created.
- This system does not provide any function to recall charts that have been deleted.

## APPENDIX

### Exercise 1

Display the list of landfill sites in Peninsula Malaysia according to states, calculate the number of sites and their collective land area.

<Conditions>

Peninsula Malaysia  
sort by states

<Item of List>

No.  
Name of State  
Name of Local Authority  
Name of Landfill Site  
Area  
Total number and area of sites

### Answer:

1. Make sure the **Landfill Site** theme is active and checked.
2. Open the table of the **Landfill Site** theme.
3. Sort ascending for the **State** field using **Sort Ascending** button.
4. Click “**No\_**” field to make it active.
5. Click **Field** menu and click **Summarize**.
6. Follow the guide mention in manual in **Section 3.2: Create, Print and Export A Table, Step 1 no. 4, page 35**. Under the **Summary Table Definition** dialog box, click **Save As** to save the file name as “**Exsum1.dbf**” in “**tablesummary**” folder under path **c:\landfillclosure\tablesummary\Exsum1.dbf**
7. Click the above items that you want to list in the summary table. Follow the procedures in *page 36*.
8. Follow **Section 3.2.3: Export Table, page 37 to page 39**. When you export the file as **dBASE** in LACMIS, save the file name as **Exsum1.dbf** to the **Excel** folder for this example.
9. You can open the **Exsum1.dbf** file from the **Excel** folder and do the calculation to get the total land area by using **Excel**. When you have finished, save the file as **Example1.xls** in the **Excel** folder.

Landfill Closure Management Information System (LACMIS)

File Edit Table Field Window Help

0 of 4 selected

query1.dbf

No	Count	First name	First name	First land	Area (ha)
SL-01	1	MP Petaling Jaya	Kelana Jaya	Level 1	
SL-02	1	MP Klang	Telok Kapas	Level 1	
SL-03	1	MP Kajang	Sungai Kenbong	Open dumping	
SL-04	1	MP Selayang	Kundang	Level 1	

Microsoft Excel - example1

File Edit View Insert Format Tools Data Window Help

6143 Total

	B	G	H	V	
1	No	State	Name of LA	Name of Landfill Site	Area (ha)
2	DB-01	DBKL	DB Kuala Lumpur	Taman Beringin	12.00
3	JH-01	Johor	MD Tangkak	Chohong	1.01
4	JH-02	Johor	MP Muar	Bakri	14.57
5	JH-03	Johor	MP JB Tengah	Ulu Tiram	17.40
6	JH-04	Johor	MP JB Tengah	Lima Keda	2.50
7	JH-05	Johor	MP JB Tengah	Kempas	0.91
8	JH-06	Johor	MP JB Tengah	Taman Mega Ria	6.48
9	JH-07	Johor	MD Kota Tinggi	Batu Empat	6.00
10	JH-08	Johor	MD Kota Tinggi	Sungai Rengit	
11	JH-09	Johor	MD Kota Tinggi	Bandar Kota Tinggi	1.62
12	JH-10	Johor	MD Mersing	Jemaluang	4.05
13	JH-11	Johor	MD Mersing	Endau	4.85
14	JH-12	Johor	MD Mersing	Sri Pantai	4.05
15	JH-13	Johor	MD Labis	Pusat Membuang Sampah Jalan Temayar	
16	JH-14	Johor	MD Labis	Pusat Membuang Sampah Jalan Maskil	
17	JH-15	Johor	MD Pontian	Tapak Pelupusan Jalan Sawah, Pekan Nenas	12.00
18	JH-16	Johor	MD Pontian	Tapak Pelupusan Rimba Tejun, Pontian	12.00
19	JH-17	Johor	MD Pontian	Tapak Pelupusan Sanglang, Ayer Baboi	1.21
20	JH-18	Johor	MD Segamat	Segamat Baru	3.30
21	JH-19	Johor	MD Segamat	Jementah	10.00
22	JH-20	Johor	MD Segamat	Lebuh Raya Segamat / Kuantan	90.00
23	JH-21	Johor	MD Tangkak	Tapak Pelupusan Sampah Simpang Bekoh	3.00
24	JH-22	Johor	MD Tangkak	Tapak Pelupusan Sampah Batu 16 Sengkang, Bukit Gambir	7.00
25	JH-23	Johor	MD Simpang Renggam	Tapak Pelupusan Sampah Simpang Renggam (Ladang Cep 1)	6.00
26	JH-24	Johor	MD Simpang Renggam	Tapak Pelupusan Sampah Machap	3.00
27	JH-25	Johor	MD Simpang Renggam	Tapak Pelupusan Sampah Renggam	2.00
28	JH-26	Johor	MD Simpang Renggam	Tapak Pelupusan Sampah Simpang Renggam (Jln Kulai Cina)	0.50
29	JH-27	Johor	MD Yong Pang	Tapak Pelupusan Sampah MDYP	0.40
30	KD-01	Kedah	MP Kulim Kedah	Padang Cina	58.00
31	KD-02	Kedah	MD Baling	Pulai	6.80
32	KD-03	Kedah	MD Baling	Kuala Pegang	11.00
33	KD-04	Kedah	MP Sungai Petani	Semaling	61.00
34	KD-05	Kedah	MP Sungai Petani	Jeniang	1.50
35	KD-06	Kedah	MP Kota Setar	Bukit Tok Bertandok	9.70

## Exercise 2

Print the list of landfill sites in Peninsular Malaysia which is already closed and is presently used as “housing”.

<Conditions>

Peninsula Malaysia  
closed site  
sort by states  
sort by closed year

<Item of List>

No.  
Name of State  
Name of Local Authority  
Name of Landfill Site  
Landfill Level  
Closed year  
Area  
Total number and area of sites

Answer :

1. Open the Query Database View.
2. The **Landfill Sites** query dialog box will appear. Double-click “**Existing Land Utilisation**” in the **Fields** and click “=” and type in “\***housing**\*”. When you have finished, click **New Set** button to select the request.
3. The table of the **Landfill Site** will be highlighted in yellow. You can promote the highlighted rows to the top of the table by clicking **Promote** button.
4. Click “**No\_**” to activate the field name and click **Field** menu. Click **Summarize** button to do a summary on the table.
5. Follow the same procedures in the manual under **Section 3.2: Create, Print and Export A Table, Step 1 no. 4, page 35**.
6. In the Summary Table Definition dialog box, save the file name as Exsum2.dbf in the path c:\Landfillclosure\tables\summary\Exsum2.dbf.
7. Select the above listed items following the procedures inside *page 36*. After finish, click **OK**.
8. The **Exsum2.dbf** table will appear as the result. Click **File** menu and click **Export** to export it into **Excel** folder using **dBASE** format.
9. Save the file name as Exsum2.dbf under the path c:\landfillclosure\Excel\Exsum2.dbf.
10. Open **Exsum2.dbf** in **Excel** and do the amendment, sort by **States** and by **closed year**. After sorting in **Excel**, save the file name in the path c:\landfillclosure\Excel\Example2.xls.



Landfill Closure Management Information System(LACMIS)

File Edit Table Field Window Help

0 of 4 selected

query2.dbf

No.	Count	First stat	First name	First name	
PR-02	1	Perak	MD Kinta Selatan	Kg. Batu Putih (Kg. Tersusun)	Open durr
PR-03	1	Perak	MD Kinta Selatan	Taman Sri Kampar	Open durr
PR-05	1	Perak	MB Ipoh	Buntong	Open durr
TR-01	1	Terengganu	MP Kemaman	Fkri	Open durr

Microsoft Excel - example2

File Edit View Insert Format Tools Data Window Help

Anal - 10 - B / U

	A	B	C	D	E	F	G	H	I	J	K
1	No	Count	State	Name of LA	Name of Site	Landfill Level	Disposal Operation	YE	Area (ha)		
2	PR-02	1	Perak	MD Kinta Selatan	Kg. Batu Putih (Kg. Tersusun)	Open dumping			2.0000		
3	PR-03	1	Perak	MD Kinta Selatan	Taman Sri Kampar	Open dumping		1970	4.0000		
4	PR-05	1	Perak	MB Ipoh	Buntong	Open dumping		1986	20.0000		
5	TR-01	1	Terengganu	MP Kemaman	Fkri	Open dumping		1985	2.0200		
6	Total	4							28.0200		
7											
8											
9											
10											
11											
12											
13											
14											
15											
16											
17											
18											
19											
20											
21											
22											
23											
24											
25											
26											
27											
28											
29											
30											
31											
32											
33											
34											
35											

Ready

### Exercise 3

Pick out and print the list of landfill sites in Peninsula Malaysia which have a remaining life span of less than 2 years.

<Conditions>

Peninsula Malaysia

Disposal Operation – Year End is before 2005.

Note:

- \* Choose the Remaining Life Span is less than 2 years. In this case, the Disposal Operation-Year End should be whatever year before 2005 as the Remaining Life Span is based on 2003 inventory. If Disposal Operation-Year Start is 2008, then Disposal Operation-Year End should be 2010.
- \* As mentioned above, the “Remaining Life Span” is based on 2003. When the data is not renewed every year, it is better to use the Disposal Operation-Year End to determine the Remaining Life Span by referring to the year when the user is using the application.

Sort by states

Sort by Disposal Operation-Year End

<Item of List>

No.

Name of State

Name of Local Authority

Name of Landfill Site

Disposal Operation-Year End

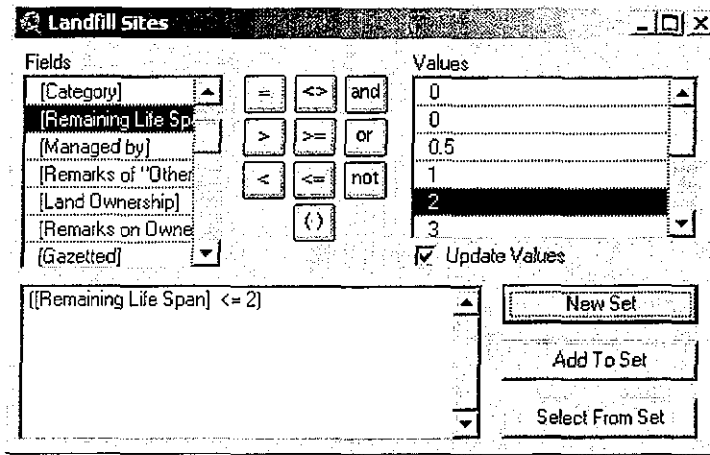
Area

Total number and area of sites

**Answer:**

1. Open the **Query Database** view and the **Landfill Sites** query dialog box will appear.
2. Double click “**Remaining Life Span**” and click “<=” and type in “2”. The selected query will show in the list box. Click **New Set**.
3. Then, click “**No\_**” field name to make it active. Click **Field** menu and click **Summarize**.
4. Save the file name as **Exsum3.dbf** under path **c:\landfillclosure\tablesummary\Exsum3.dbf**.
5. Select the items that need to be input in the table as shown above. After that click **OK**.
6. The **Exsum3.dbf** table will be shown.
7. Click **File** menu and click **Export**.
8. Follow the procedures in **Section 3.2: Create, Print and Export A Table, page 37 until page 39**. Save the file as **Exsum3.dbf** in **Excel** folder.

- Open **Excel** and open **Exsum3.dbf** file. Then make the necessary changes and use the **Excel** function to calculate the total area. Save the file as **Example3.xls**.



Landfill Closure Management Information System(LACMIS)

File Edit Table Field Window Help

0 of 23 selected

query3.dbf

No	Count	First stat	First name	First name	Area
DB-01	1	DBKL	DB Kuala Lumpur	Taman Beringin	
JH-02	1	Johor	MP Muar	Bekri	
JH-03	1	Johor	MP JB Tengah	Ulu Tiram	
JH-07	1	Johor	MD Kota Tinggi	Batu Empat	
JH-13	1	Johor	MD Labis	Pusat Membuang Sampah Jale	
JH-22	1	Johor	MD Tangkak	Tapak Pelupusan Sampah Bat	
JH-27	1	Johor	MD Yong Peng	Tapak Pelupusan Sampah MD	
KD-07	1	Kedah	MD Kubang Pasu	Paya Kemunting	
KL-02	1	Kelantan	MP Kota Baru	Tebing Tinggi	
ML-03	1	Melaka	MB Melaka	Krubong	
MS-02	1	Malaysia	MP Seremban	Cikarang	

*The Study on The Safe Closure and Rehabilitation of Landfill Sites in Malaysia  
Final Report – Volume 6*

No	Count	State	Name of LA	Name of Site	Disposal Operation, YE	Area (ha)
1	1	DBKL	DB Kuala Lumpur	Taman Beringin	2004	12.0000
2	1	Johor	MP JB Tengah	Ulu Tiram	2003	17.4000
3	1	Johor	MD Kota Tinggi	Batu Empat	2004	6.0000
4	1	Johor	MD Tangkak	Tapak Pelupusan Sampah Batu 15 Sengkang, Bukit Gambir	2004	7.0000
5	1	Johor	MP Muar	Bakri	2005	14.5700
6	1	Johor	MD Labis	Pusat Membuang Sampah Jalan Temayar	2005	
7	1	Johor	MD Yong Peng	Tapak Pelupusan Sampah MDYP		0.4000
8	1	Kedah	MD Kubang Pasu	Paya Kemunting	2005	5.0300
9	1	Kelantan	MP Kota Baru	Tebing Tinggi	2003	19.0000
10	1	Melaka	MB Melaka	Krubong	2005	27.7000
11	1	N Sembilan	MP Seremban	Sikemat	2003	5.2600
12	1	Penang	MD Jerantut	Tapak Pelupusan Sampah Kg. Mat Litau	2005	4.3700
13	1	Perak	MP Seberang Perai	Ampang Jajar	2003	17.0000
14	1	Perak	MD Kerian	Tapak Pelupusan Sampah Jalan Dnnistown Parit Buntar	2003	0.8100
15	1	Perak	MP Manjung	Tapak Pelupusan Sampah Sungai Wangi	2003	10.1200
16	1	Perak	MD Tapah	Pekan Getah	2004	21.5000
17	1	Perak	MD Kerian	Tapak Pelupusan Sampah Pematang Pasir Alor Pongau (Ber	2005	2.4300
18	1	Perak	MP Manjung	Tapak Pelupusan Teluk Cempedak	2005	2.0200
19	1	Perlis	MP Kangar	Kuala Perlis	2003	8.0000
20	1	Selangor	MP Klang	Teluk Kapas	2003	32.3600
21	1	Selangor	MP Selayang	Kundang	2005	32.3600
22	1	Terengganu	MP K Terengganu	Kubang Ikan	2004	19.3000
23	1	Terengganu	MD Marang	Tapak Pelupusan Sampah MDM	2004	2.5100
24	29					261.1900

#### **Exercise 4**

Print the map of landfill sites in Kedah and Penang and display the location of the landfill sites, water intake points and rivers.

<Conditions>

Kedah and Penang

<Item of Map>

Location of Landfill Site

River

Water Intake Point

Boundary of the state

Road Network

Name of Main City

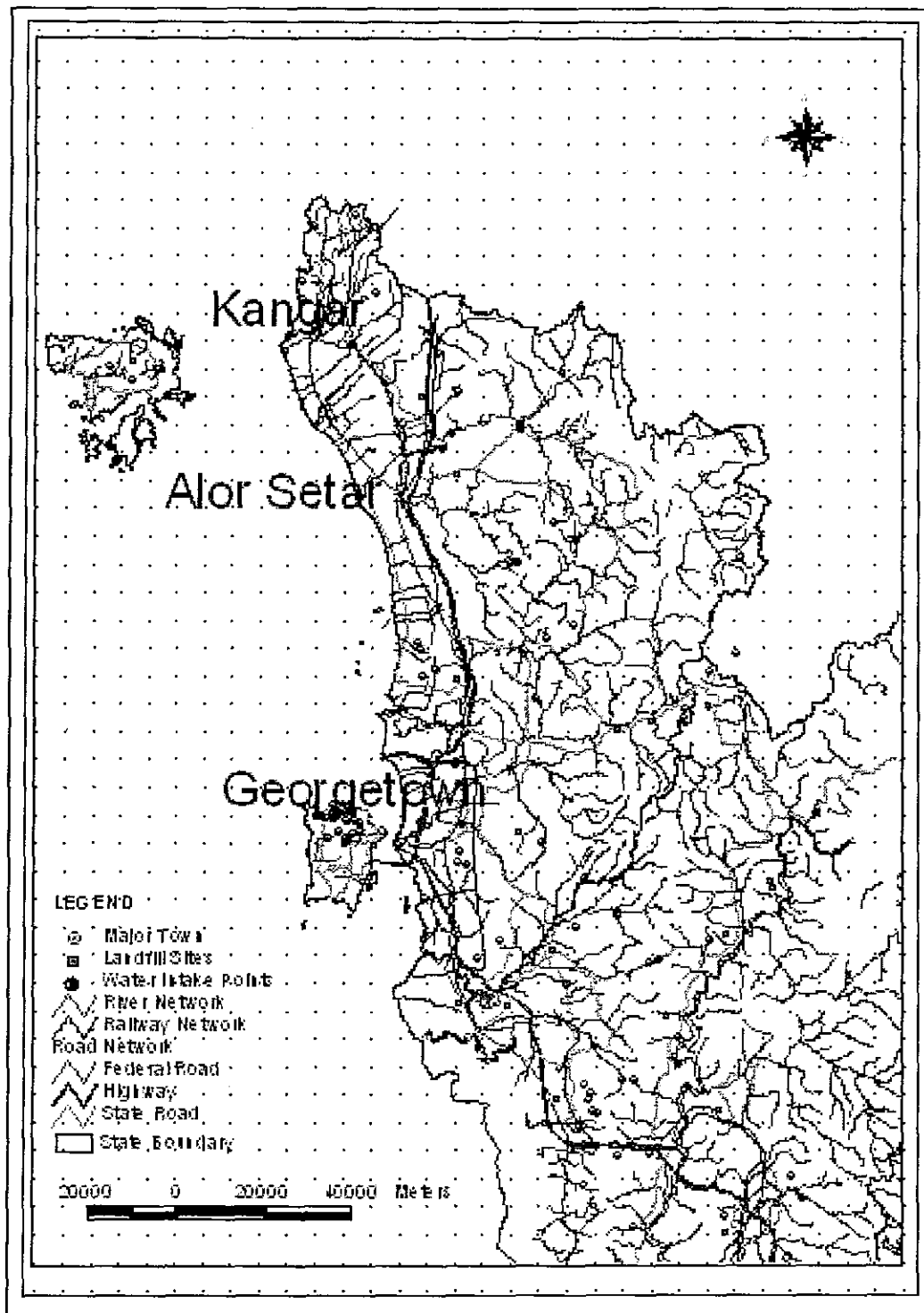
Scale

Direction

Legend of Map

#### **Answer:**

1. Open **Information Display** view and check box **Basic Information** theme, **River network** theme, **Water Intake Point** theme, **State** theme, **Road Network**, and **Major Town** theme.
2. Zoom in to the **Kedah** and **Penang** states.
3. Close the **Information Display** view and click **Layouts** icon to make a new layout.
4. Refer back to manual for the procedures to create layout on *page 27 to page 30*.



### Exercise 5

Print the map of landfill sites in Johor and display the location of the landfill site according to their classification levels.

<Conditions>

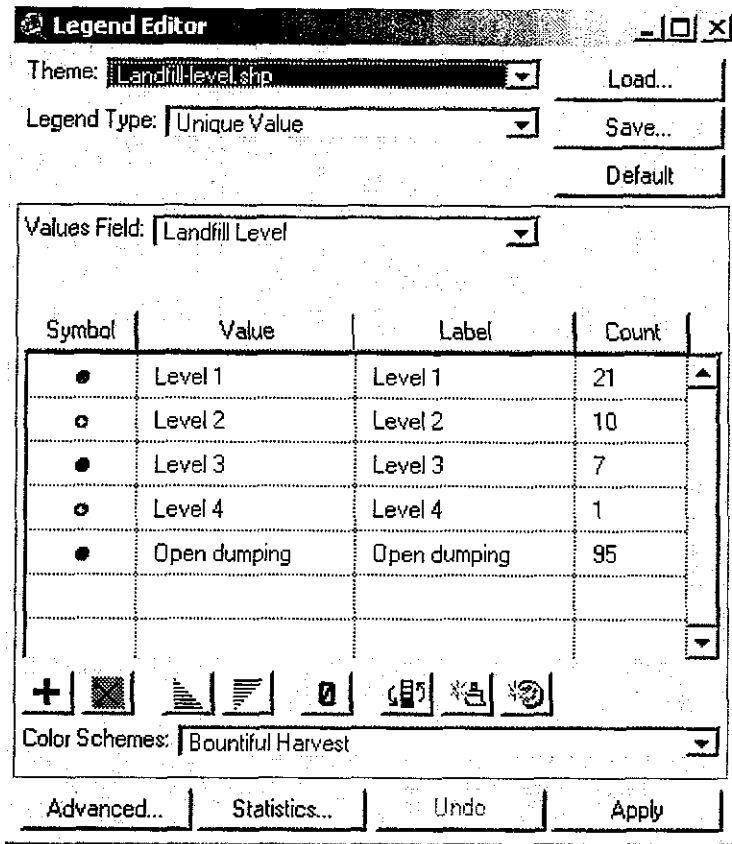
Johor  
Classifying level of landfill site

<Item of Map>

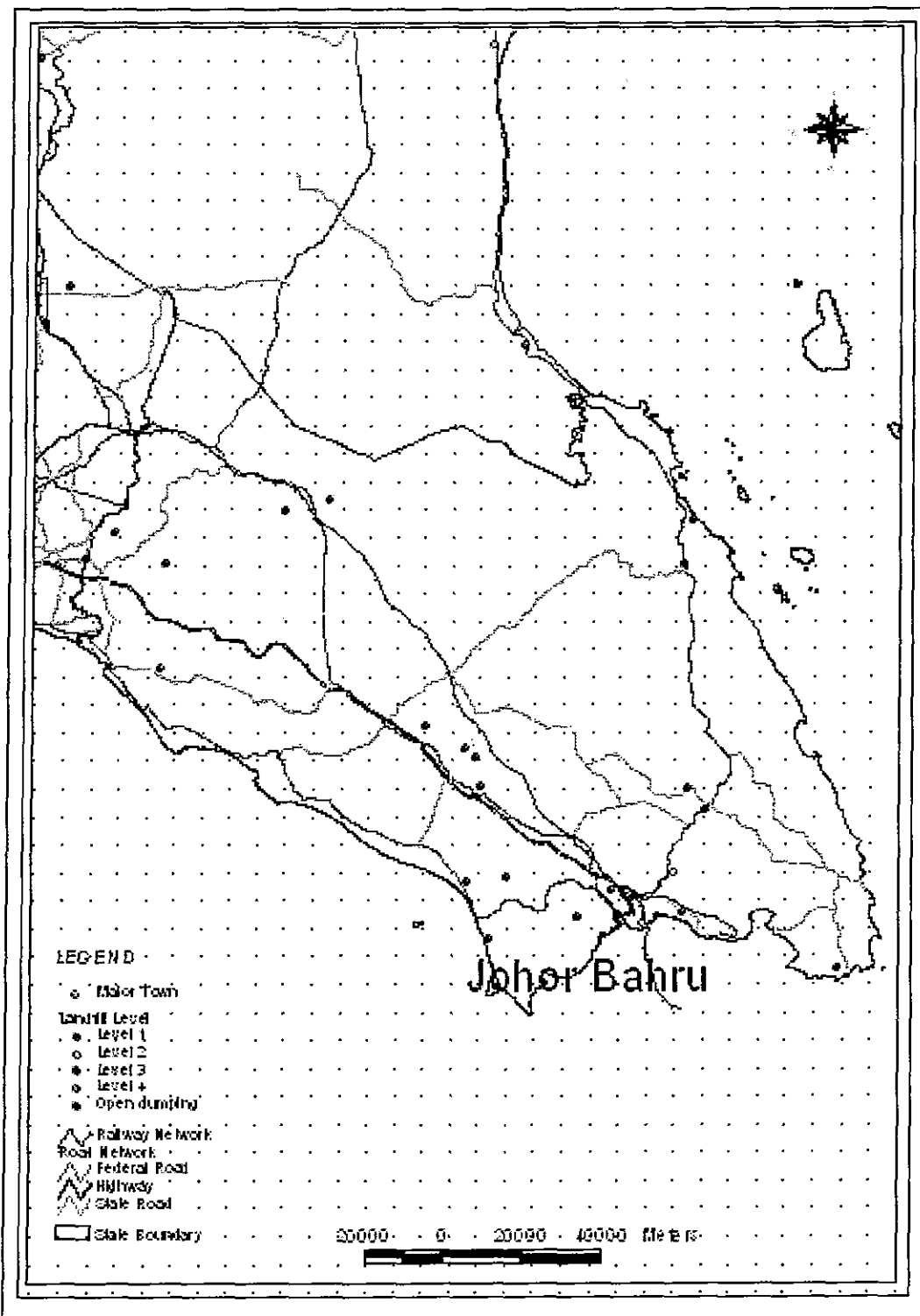
Location of Landfill Site  
Road Network  
Name of Main City  
Scale  
Legend of Map

#### Answer:

1. Open **Information Display** view and click on **Initiate** button.
2. Click **Yes** to add theme. The **Add/Delete Theme** dialog box will appear and click on **Add Theme**.
3. **Add Theme** dialog box will appear and click **c:\landfillclosure** to locate the file “**Landfill-level.shp**”.
4. Check box **Landfill-level.shp** to make it visible on the map.
5. Double click **Landfill-level.shp** to change the legend of the theme. Change the **Legend Type** to **Unique Value** and **Values Field** is **Landfill Level**. On the **Symbol** column, change the pattern and colour shown as in the figure below. After finish, click **Apply**.
6. Zoom in to Johor state. Refer back to manual on *page 27 to page 30* on how to create a layout.
7. After finish, print the map out. Click **File** menu and click on **Print**. Make sure your printer is ready for print out. Click **OK**.







## Exercise 6

Export the map of the operating landfill sites of Peninsula Malaysia and display the location of landfill sites with high urgency on the proper closure measure and whose land area exceeds 10 ha.

Note:

- \* LACMIS has defined " a landfill site with high urgency on the proper closure measure" as:  
Marks of "Environmental Risk" is more than 0.4  
Marks of "Value of Land Utilization" is more than 0.3

<Conditions>

Peninsula Malaysia

Operating Site

Marks of "Environmental Risk" is more than 0.4

Marks of "Value of Land Utilization" is more than 0.3

Area is more than 10 ha

<Item of Map>

Location of Landfill Site

Boundary of the state

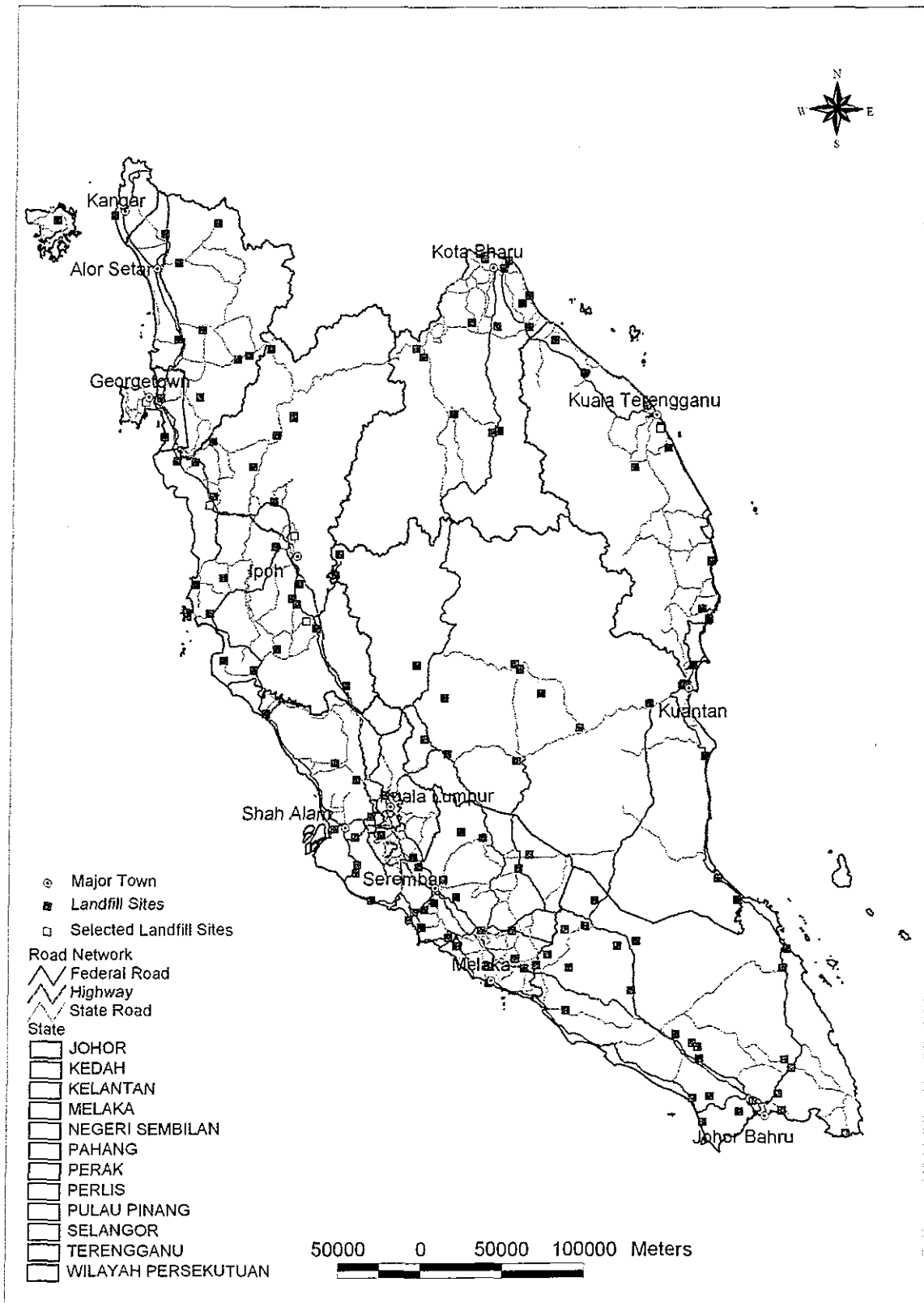
Main Road

Scale

Legend of Map

**Answer:**

1. Open the **Query Database View** to do the query.
2. The **Landfill Site** query dialog box appears. Double click the "**Category**" in the **Fields** list and click "=" and then double click on "**Operation**" in the **Values** list. Then click "**and**".
3. Double-click on the "**Environmental Risk**" in the **Fields** list and click "=" as the operator. Then type in or double-click the "**0.4**" in the **Values** list.
4. Click on "**and**" as the operator and double-click on "**Value of Land Utilization**" from the **Fields** list and click "=" and double-click or type in the "**0.3**" value.
5. Click "**and**" again and double-click on "**Area**" in the **Fields** list. Click "=" and double click the "**10**" in **Values** list or type in the number.
6. Click **New Set** and the results will be shown as highlighted in yellow colour.
7. Close the **Landfill Site** query dialog box and check box on the themes that needs to be displayed in the map.
8. Refer back to manual on *pages 27 to 30* on how to create a layout.
9. After you have finished creating the layout, click **File** menu and click **Export** to export the layout to another place.
10. Save the file as **Example 6.wmf** under the **Image** folder in **c:\landfillclosure**.
11. You can open the **Microsoft Powerpoint** to insert the **Example6.wmf** in.



Note: The map displayed here is the answer of the query made on 21<sup>st</sup> August 2003.

## Exercise 7

Output a specification table in the form of the text file for landfill sites in Terengganu that are operating at present and to be completely land-filled 2010.

<Conditions>

Terengganu  
Now operating  
Planned to complete landfilling until 2010

<Item of List in Text File>

No.  
Name of Local Authority  
Name of Landfill Site  
Landfill Level  
Operation Start Year  
Operation End Year  
Area  
Environmental Risk  
Value of Land Utilization  
Total number and area of sites

### Answer:

1. Open **Query Database** view. The **Landfill Site** query dialog box will appear.
2. Double-click the **“State”** from the **Fields** list and click on **“=”** as an operator and double-click on **“Terengganu”** in the **Values** list. Then click **“and”** as the condition to continue with the query statement.
3. Double-click on **“Category”** in the **Fields** list and click on **“=”** and double-click on **“Operation”** in the **Values** list. Then click **“and”**.
4. Double-click on **“Disposal Operation-Year End”** in the **Fields** list and click on **“<=”** and type in or double-click on **“2010”** in the **Values** list.
5. Use the **Promote** button to put the highlighted result on top of the table. Then click **“No”** to make it active.
6. Click **Field** menu and click **Summarize**. Save the file as **Exsum7.dbf** in the path **c:\landfillclosure\tablesummary**.
7. Click to add the items on the list above as the items that need to be shown in the new summary table.
8. After finish, click **OK**. The **Exsum7.dbf** table will be shown.
9. Click **File** menu and click **Export**. Save the file as **Exsum.dbf** in **Excel** in the path **c:\landfillclosure\Excel**.
10. Open up **Microsoft Excel** and open the file in the **Excel** folder.
11. You can do amendment to the field name and also use the **Excel** function to calculate the total number and area of sites.
12. Save the file as **Example7.xls**.

Landfill Closure Management Information System (LAEMIS)

File Edit Table Field Window Help

0 of 1 selected

query7.dbf

No	Count	First name	First name	First land	Area
TR-08	1	MD Besut	Landfield (Sistem Tambus)	Open dumping	

Microsoft Excel - example7

File Edit View Insert Format Tools Data Window Help

Arial - 10

	A	B	C	D	E	F	G	H
1	No	Count	Name of LA	Name of Site	Landfill Level	Disposal Operation-Year Start	Disposal Operation-Year End	Area (ha)
2	TR-08	1	MD Besut	Landfield (Sistem Tambus)	Open dumping	1993	2010	4.61
3								
4								
5								
6								
7								
8								
9								
10								
11								
12								
13								
14								
15								
16								
17								
18								
19								
20								
21								
22								
23								
24								
25								
26								
27								
28								
29								
30								
31								
32								
33								
34								
35								

Ready

## Exercise 8

Renew the data for the landfill site at “Ampang Jajar” because landfilling is completed.

<Conditions>

“Ampang Jajar” landfill site

<Renewal Information>

Category of the landfill changes from “Operation” to “Closed”.

*\* Because this is an exercise, the information which was changed in the exercise should return to the origin.*

### Answer:

1. Open the **Information Display** view. Then click **Update** button.
2. Click on **Basic Info Database** to open up the **Basic Info Database**'s table.
3. Click **Table** menu and click **Start Editing**.
4. Use the **Find** button to find the landfill site “**Ampang Jajar**” by typing in. The result is highlighted in yellow colour.
5. Scroll to the **Category** field and use the **Edit** button to change the attribute from “**Operation**” to “**Closed**” by typing in.
6. After finish type-in, you can click **Table** menu and click **Stop Editing**. Since this is an exercise, you must change it back to the original by using the same procedures as the above *no. 3 to no. 6*.

The Study on The Safe Closure and Rehabilitation of Landfill Sites in Malaysia  
Final Report – Volume 6

Landfill Closure Management Information System (LAD-MIS)

File Edit Table Field Window Help

1 of 141 selected

Basic Info Database

Name of LA	Name of Site	Address of Site	Layout site attached	Remarks on Layout	Category	Remaining Life Span
MP Seberang Perai	Ampang Jajar	Jalan Peralang Pauh	Yes		Closed	0.5
MP Seberang Perai	Pulau Burong	Mukim 11, Seberang Perai	Yes		Operation	6.0
MP Kulim Kedah	Padang Cina	Lot 1002 & 1003	Yes		Operation	20.0
MD Baling	Pulai	Lot 1149, Jalan Rambong, Pulai	Yes		Operation	15.0
MD Baling	Kuala Pegang	Kg. Chenderai, Kuala Pegang	No		Closed	
MP Sungai Petani	Semeling	Jalan Semeling-Bedong	Yes		Operation	10.0
MP Sungai Petani	Jenwang	Km 5, Jalan Bukit Sembau	No		Closed	
MP Kota Setar	Bukit Tok Bertandok	Jalan Alor Setar-Kuala Nerang	Yes		Operation	8.0
MD Kubang Pasu	Paya Kemuning	Km 15, Paya Kemuning, 06001	Yes		Operation	2.0
MP Kangar	Kuala Perlis	Jalan Wai, 02000 Kuala Perlis	Yes		Operation	0.0
MD K.Krai Selatan	Tapak Pelupusan Sampah Dal	Km 2, Jalan Dabong-Kemubu	No		Operation	3.0
MP Kuantan	Tapak Sampah Atabara	Km 8, Jalan Sungai Lembing	No		Closed	
MD Bentong	Sungai Sematut	Sungai Sematut, Bentong	No		Closed	
MD Bentong	Chamang	Jalan Chamang	No		Operation	3.0
MP Temerloh	Tapak Pelupusan Ulu Tualang	Ulu Tualang, Temerloh	Yes		Operation	3.0
MD Cameron Highlands	Tapak Pelupusan Sisa Pepejal	Bt 51, Jln. Kg Raja-Simpang Pt	Yes		Operation	5.0
MD Cameron Highlands	Tapak Pelupusan Sisa Pepejal	Bt 34 3/4, Jalan Tapah-cameir	Yes		Closed	
MD Kuala Langat	Tapak Pelupusan Sampah	Bt 17.5, Jalan Kelang-Banting	Yes		Operation	4.0
MD Kuala Langat	Tapak Pelupusan Tanjung Sej	Jalan Tumbak, Sepang	No		Closed	
MD Kuala Langat	Tapak Pelupusan Banting	Jalan Kuchai, Sg Lang, Banting	No		Closed	
MD Jerantut	Tapak Pelupusan Sampah Kg		Yes		Operation	2.0
MD Jerantut	Tapak Pelupusan Sampah Bat		Yes		Closed	
MD Maran	Tapak Sampah Maran	Km 3, Jalan maran, Jerantut	No		Operation	10.0
MD Maran	Tapak Sampah Jengka 10	Jengka 10, Bandar Jengka	No		Operation	
MD Raub	Tapak Pelupusan Sampah Sg	Lot 9815 Dan 6016, KG. Ruan	Yes		Operation	
MD Raub	Tapak Pelupusan Sampah Ch	Km 12, Jalan Cherch, Raub	Yes		Operation	5.0
MD Hsr Perak	Tapak Pelupusan Sampah MD	Km 12, Jln. Bidor, Teluk Intan	Yes		Operation	5.0
MD Hsr Perak	Tapak Sampah MDHP (Kaw. F	Kaw. Pekan Jenderata	Yes		Operation	3.0
MD Hsr Perak	Tapak Sampah MDHP (Kaw. E	Kaw. Bagani Datoh	No		Operation	3.0
MD Kuala Kangsar	Tapak Pelupusan Sampah MD	Km 8, Jalan Kuala Kangsar, Sa	Yes		Operation	3.0
MD Lenggong	Tapak Pelupusan Sampah Air	Air kela, Lenggong	Yes		Operation	5.0
MD Lenggong	Tapak Pelupusan Sampah Kut	Kuak, Lenggong	Yes		Closed	
MD Jel	Tapak Pelupusan Sampah MD	Bato Tj, JRTB, 17600 Jel	Yes		Closed	
MD Jel	Tapak Pelupusan Sampah MD	Kg. Sungai Mengkong, 17600	Yes		Operation	12.0
MD Pengkalen Hulu	Tapak Pelupusan Sisa Pepejal	Matir Daerah Pengkalen Hulu	No		Operation	5.0
MD Selama	Tapak Pelupusan MDS	Kg. Lampin, Jln Taman Mendel	No		Operation	5.0
MD Tanjung Malin	Tapak Pelupusan Sampah Pat	Tapak Pelupusan Sampah, Tg	Yes		Operation	7.0
MB Shah Alam	Tapak Pelupusan Sampah MP	Jalan Bukit Kemuning	No		Closed	

## Exercise 9

Pick out and print out the list of operating landfill sites in Kelantan whose operation started after 1990 and whose landfill level is “Open dumping” or “Level 1” or “Level 2”.

<Conditions>

Kelantan  
Operation started after 1990  
Now still operating  
Open dumping or Level 1 or Level 2

<Item of List>

No.  
Name of Local Authority  
Name of Landfill Site  
Landfill Level  
Operation Start Year  
Operation End Year  
Area  
Environmental Risk  
Value of Land Utilization  
Necessity of Closure Level C1  
Necessity of Closure Level C2  
Necessity of Closure Level C3  
Necessity of Closure Level C4  
Total number and area of sites

**Answer:**

1. Open the **Query Database** view. The **Landfill Sites** query dialog will be shown.
2. Refer back to manual on *pages 19 until 22*.
3. After finish query, the result is highlighted in yellow colour. Use **Promote** button to move the highlighted rows to the top of the table.
4. Click “**No**” to make the field active. Then click **Field** menu and click **Summarize**.
5. Save the file name as **Exsum9.dbf** in the path **c:\landfillclosure\tablesummary**.
6. Select the items shown above to add to the new summary table. After finish, click **OK**.
7. The **Exsum.dbf** table will be shown.
8. Click **File** menu and click **Export**.
9. Save the file as **Exsum.dbf** in the path **c:\landfillclosure\Excel**. Export the file as **dBASE** format.
10. Open the **Microsoft Excel** to open the file **Exsum.dbf**. Use **Excel** function to calculate the total number and area of sites. Save the file as **Example9.xls** in **c:\landfillclosure\Excel\Example9.xls**.



Landfill Closure Management Information System (LACMIS)

File Edit Table Field Window Help

0 of 5 selected

query9.dbf

No	Count	First_name	First_name	First_land	Ave
KL-04	1	MD K.Krai Selatan	Bukit Tembeling	Open dumping	
KL-05	1	MD K.Krai Selatan	Tapak Pelupusan Sampah Dai	Open dumping	
KL-07	1	MD Jeli	Tapak Pelupusan Sampah MD	Open dumping	
KL-08	1	MD Bachok	Kg. Sungai Gali, Telong	Open dumping	
KL-10	1	MD Machang	Air Berlaga	Open dumping	

Microsoft Excel - example9

File Edit View Insert Format Tools Data Window Help

Arial - 10 - B I U

A7	Total						
No	Count	Name of LA	Name of Site	Landfill Level	Disposal Operation- YE	Disposal Operation- YE	Area(ha) Envir
1	KL-04	MD K.Krai Selatan	Bukit Tembeling	Open dumping	2009	2013	4.0000
2	KL-05	MD K.Krai Selatan	Tapak Pelupusan Sampah Dabong	Open dumping	1996	2006	0.2000
3	KL-07	MD Jeli	Tapak Pelupusan Sampah MD Jeli (Kg. Sg. Mengkong)	Open dumping	2000	2015	2.4300
4	KL-08	MD Bachok	Kg. Sungai Gali, Telong	Open dumping	1995	2009	10.0000
5	KL-10	MD Machang	Air Berlaga	Open dumping	2002	2010	4.0400
6	Total	5					20.6700

Ready NUM

## **Exercise 10**

Add new information shown in the attached data sheet.

<New Data>

Majlis Daerah Setiu ( 6 samples )

*As for the following information, it is necessary to compute based on the information of the attached sheet.*

Environmental Risk

Value of Land Utilization

Necessity of Closure Level C1

Necessity of Closure Level C2

Necessity of Closure Level C3

Necessity of Closure Level C4

Answer:

You can update the database following the procedures in **Section 4**.

