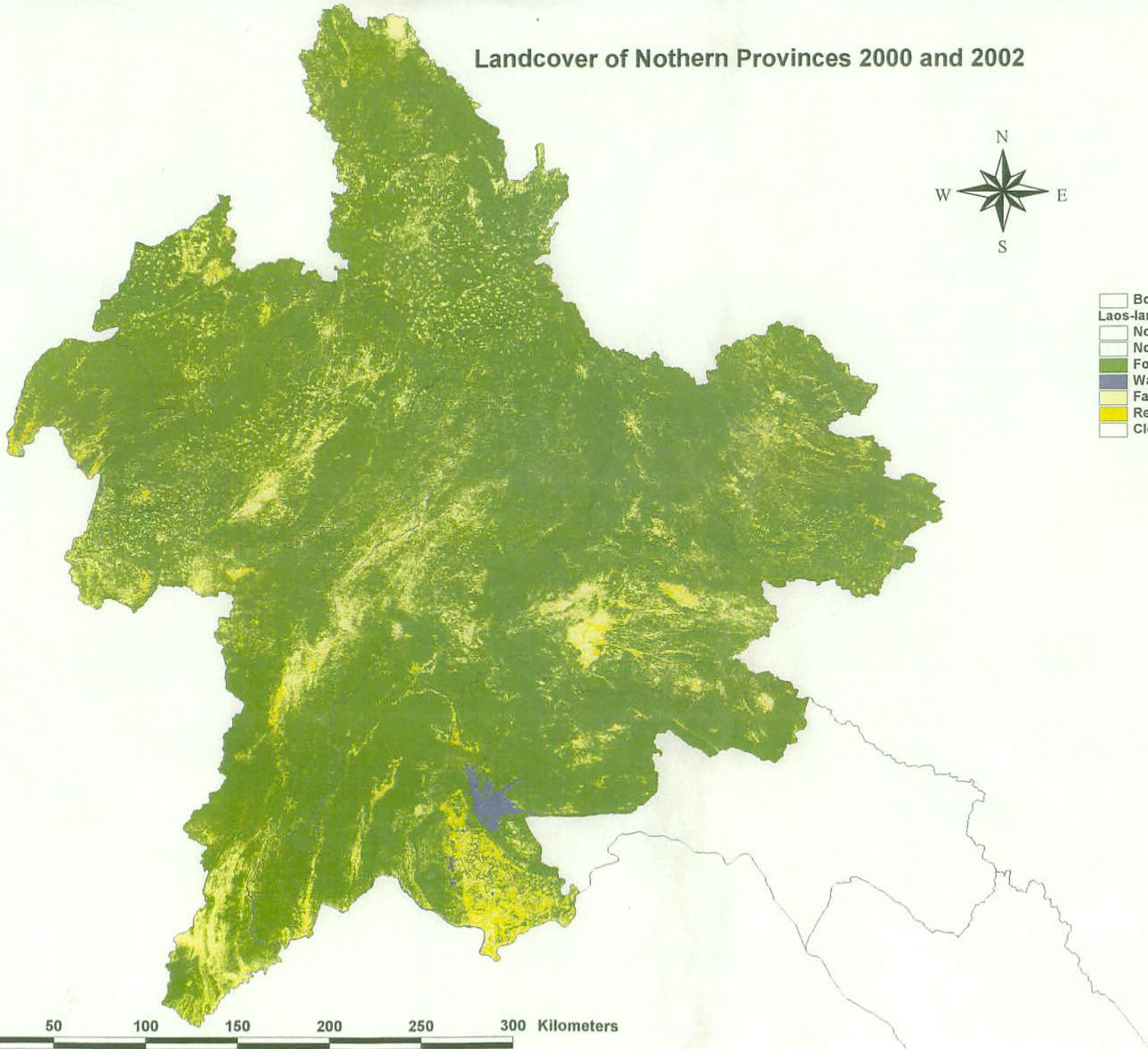


## ***Figures***

# Landcover of Nothern Provinces 2000 and 2002



- Bound\_2.shp
- Laos-landuse
- No Data
- No Data
- Forest
- Water body
- Farmland
- Residential area or paddy field
- Cloud and error






0 50 100 150 200 250 300 Kilometers

Figure 1 Land Use Map



Figure 2 SPOT False Color Image of Hat Houay 2002



-  Boundary-hh-polyline.shp
-  Contour-20m-hh.shp
-  Streams-hh.shp
- Spot-021222-hh.img
- :Layer\_1
- :Layer\_2
- :Layer\_3

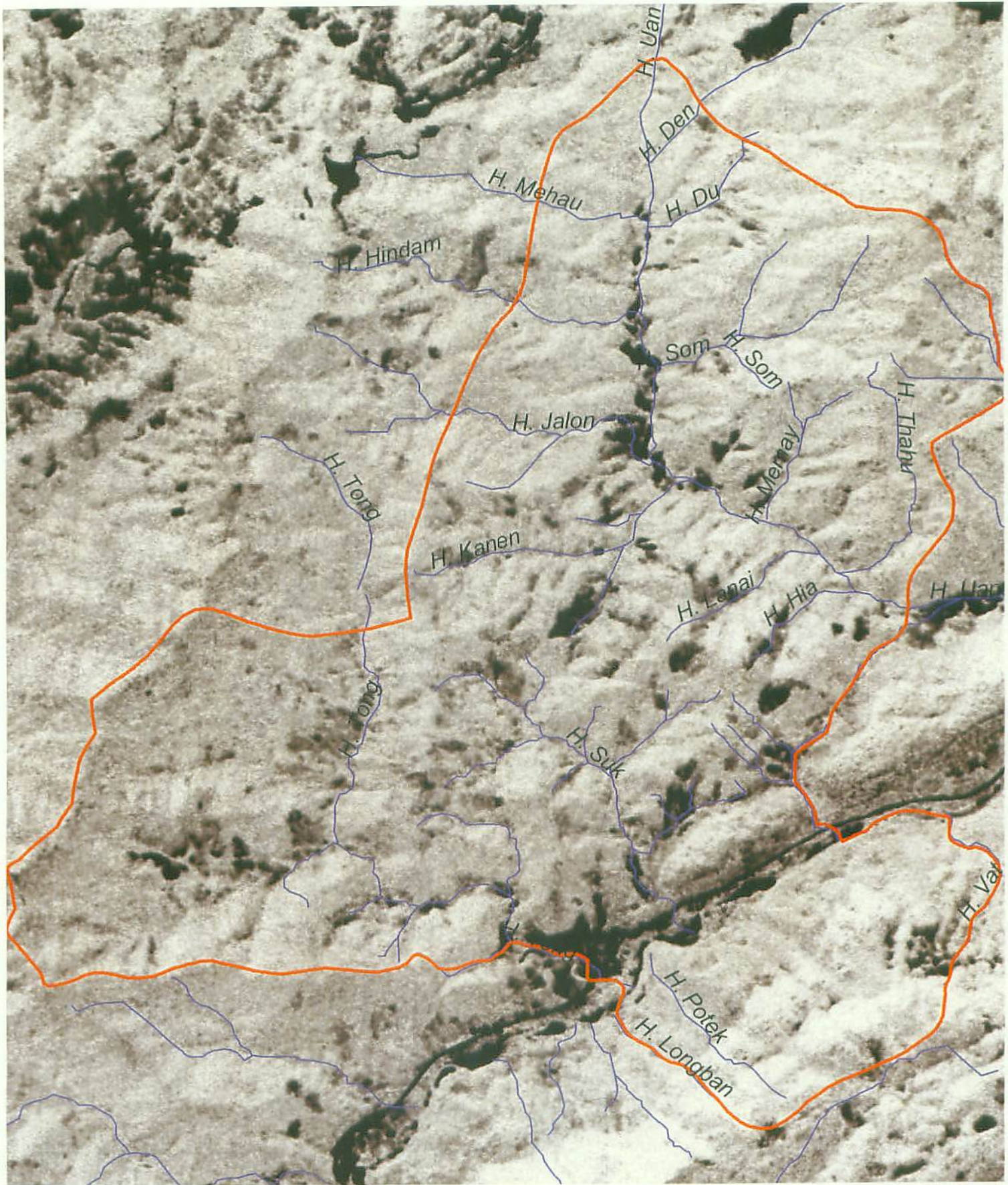


Figure 3 Normalized Vegetation Index of Hat Houay



Boundary-hh-polyline.shp  
Streams-hh.shp  
Nvi\_hh.img  
:Layer\_1

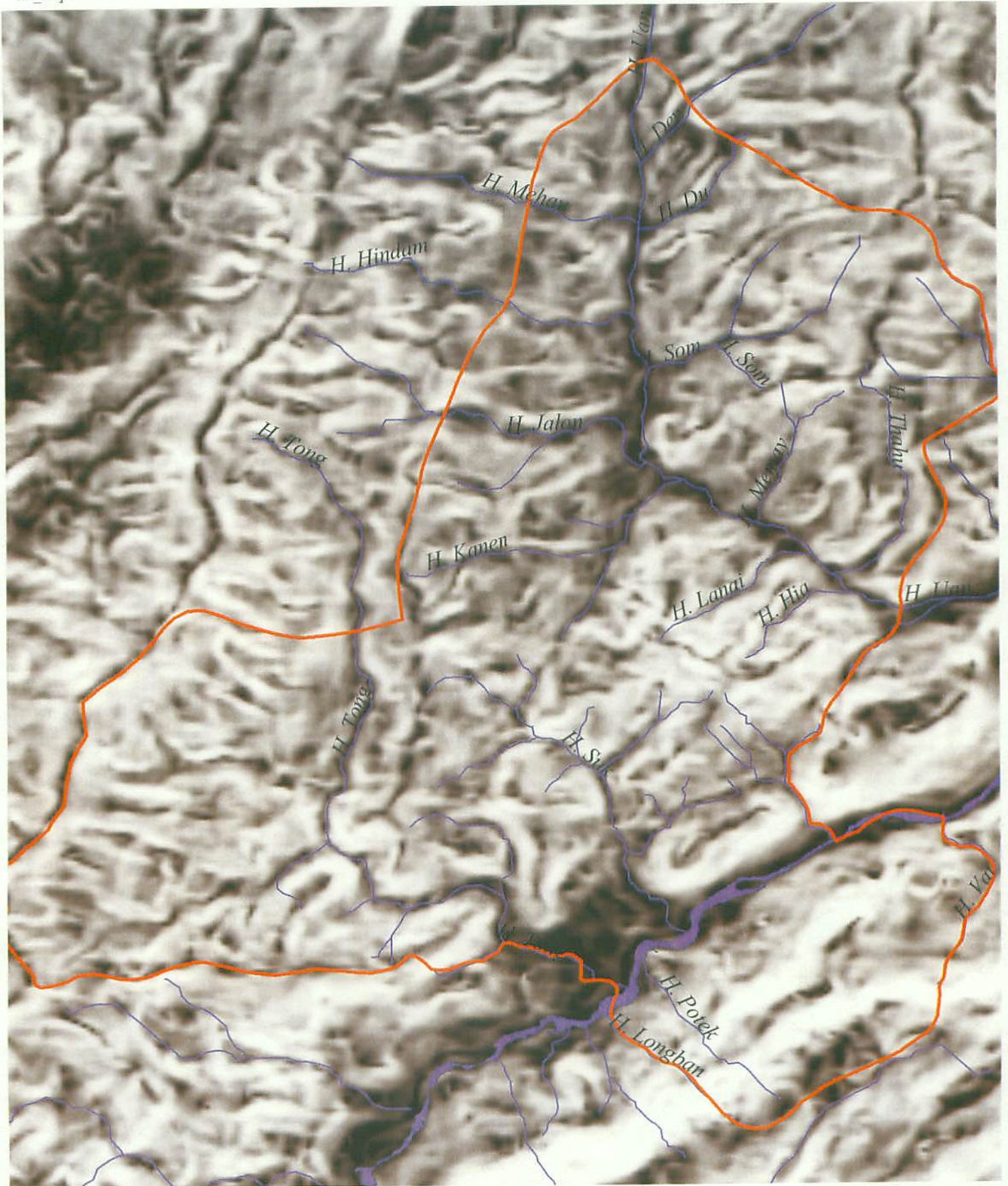


Figure 4 . ASTER Slope Image of Hat Houay

1:37000  
0 0.5 1 1.5 Kilometers



Boundary-hh-polyline.shp  
Streams-hh.shp  
Hh-slope-h  
:Layer\_1

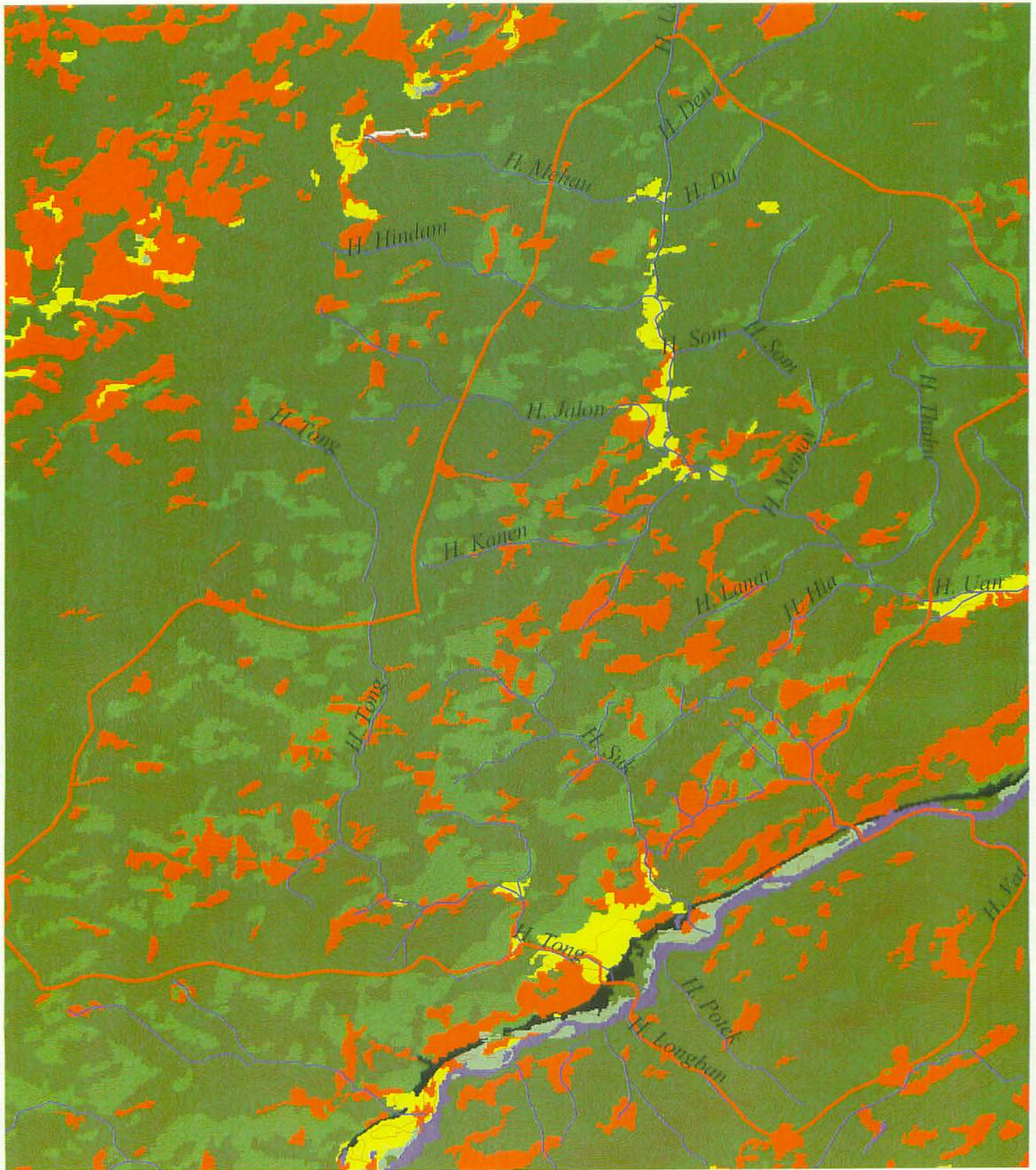
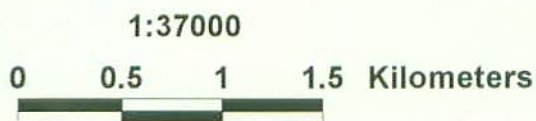


Figure 5 Present Land Use and Vegetation Map of Hat Houay



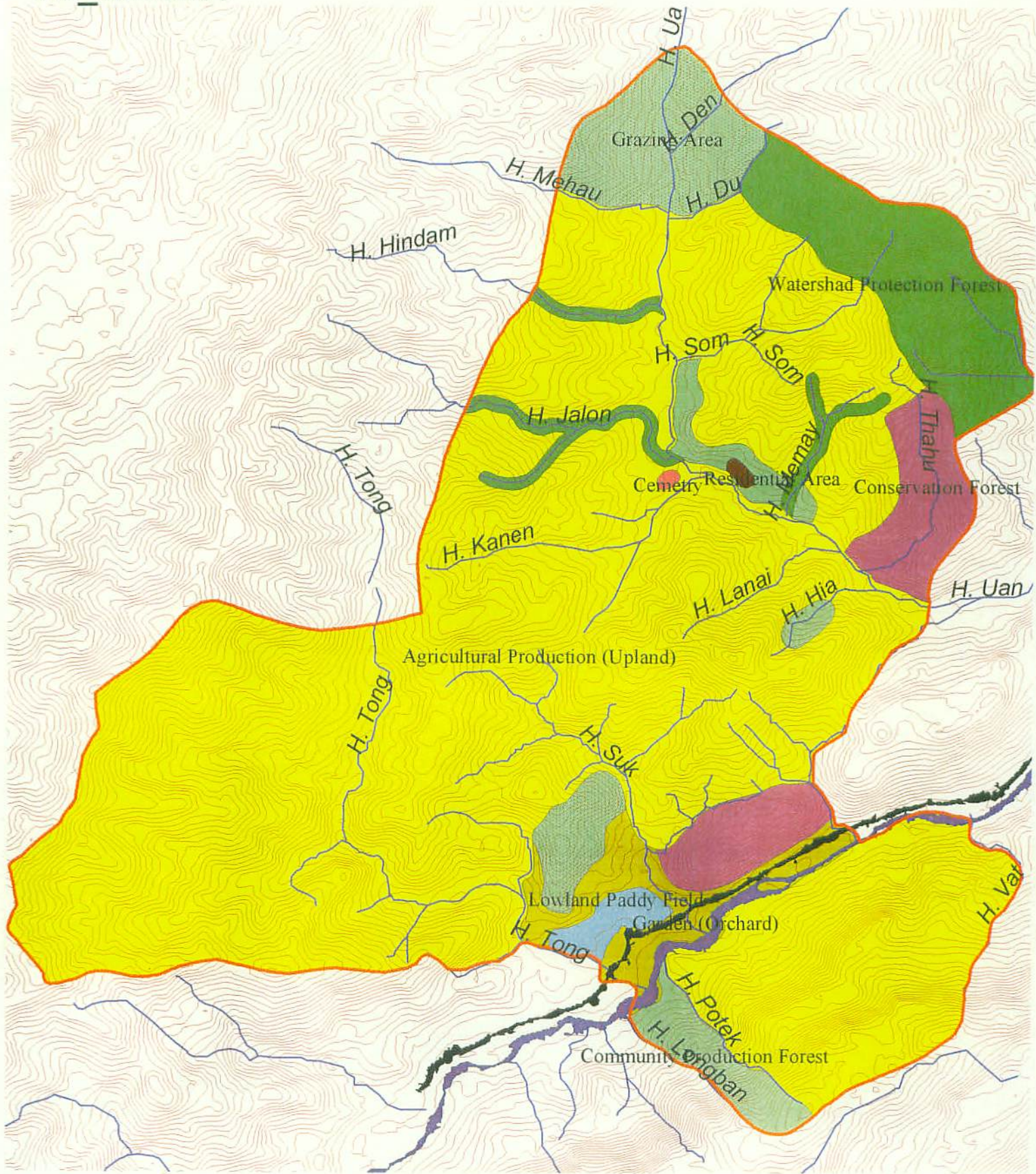
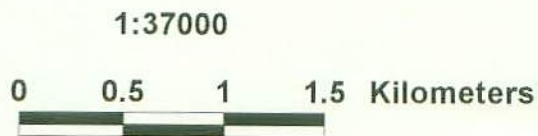


Figure 6 Customary Land Use Map of Hat Houay



- Boundary-hh-polyline.shp
- Contour-20m-hh.shp
- Road-hh.shp
- River-hh.shp
- Streams-hh.shp
- Hh\_lu\_map.shp
- Watershed protection forest
- Conservation forest
- Community production forest
- Agricultural production (upland)
- Lowland paddy field
- Grazing area
- Residential area
- Cemetery
- Orchard "suan" (tree plantation)

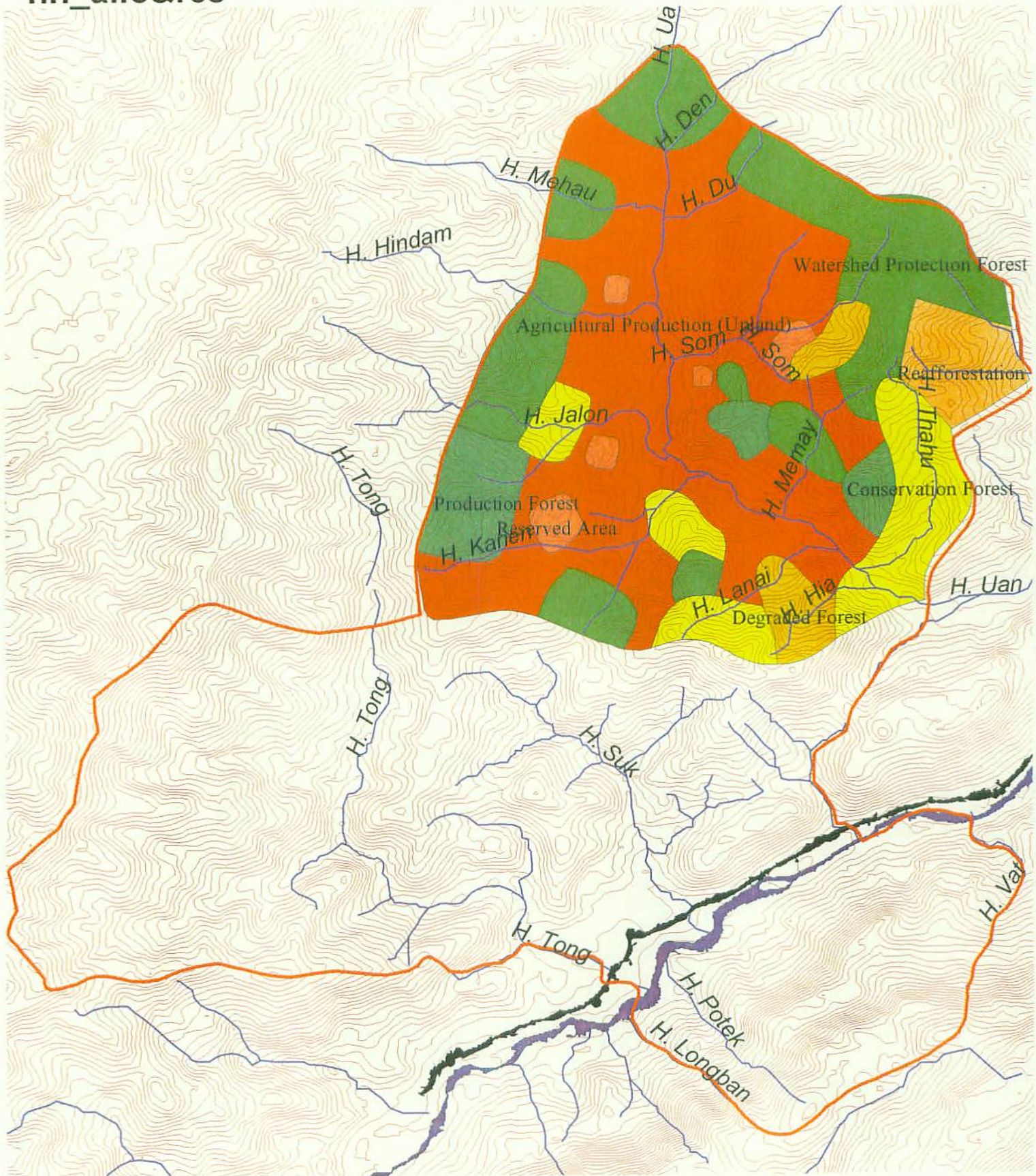
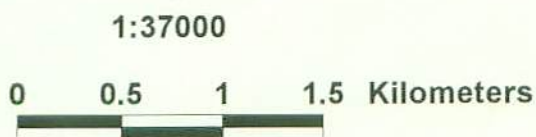


Figure 7 Land Allocation Map of the Northern Part of Hat Houay



- Boundary-hh-polyline.shp
- Contour-20m-hh.shp
- Road-hh.shp
- River-hh.shp
- Streams-hh.shp
- Hh\_la\_map.shp
- Agricultural Production (Upland)
- Conservation Forest
- Degraded Forest
- Production Forest
- Rehabilitation Forest
- Reserved Area
- Watershed Protection Forest



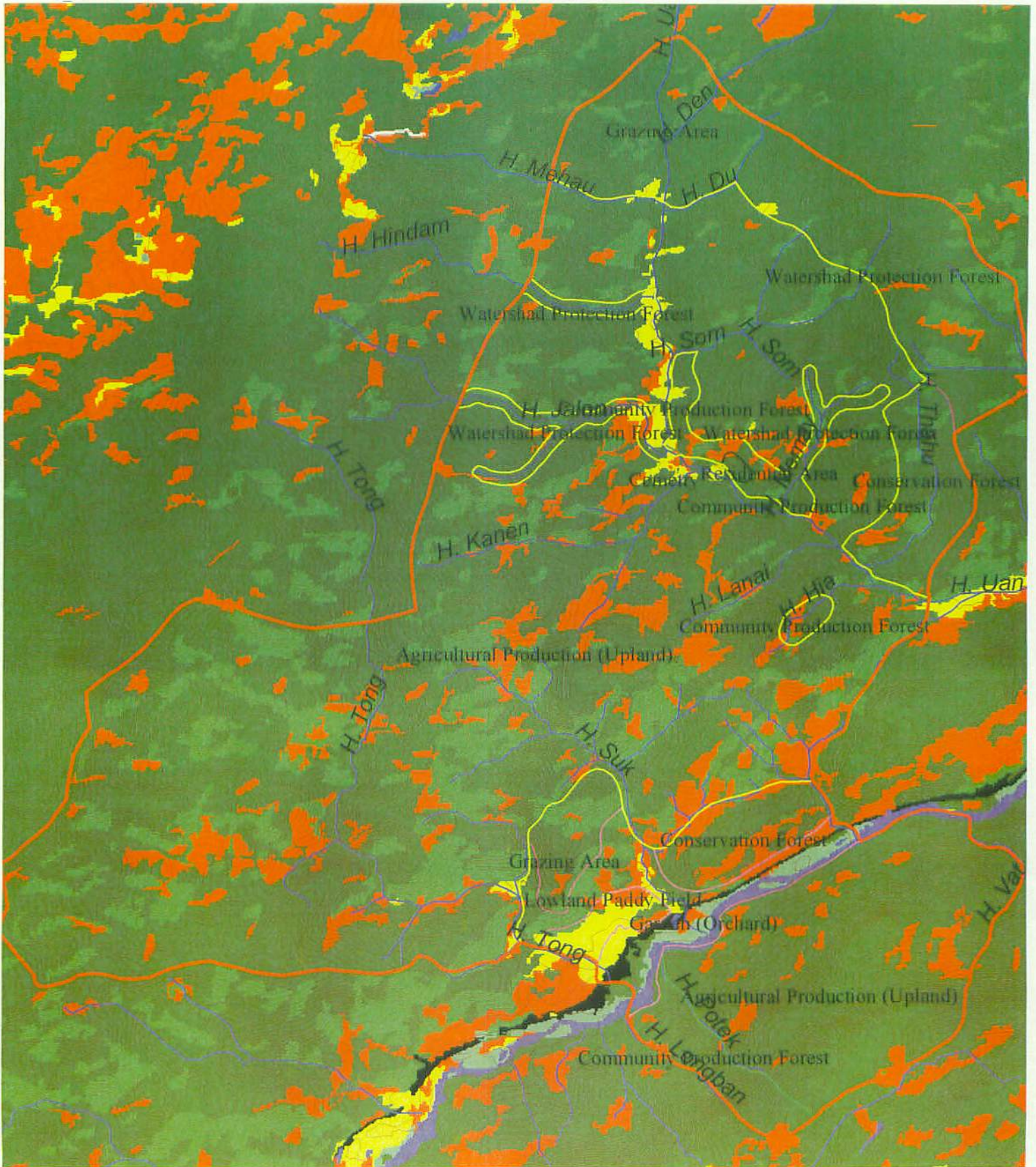
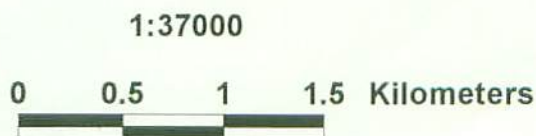


Figure 8 Detailed Land Use Map of Hat Houay



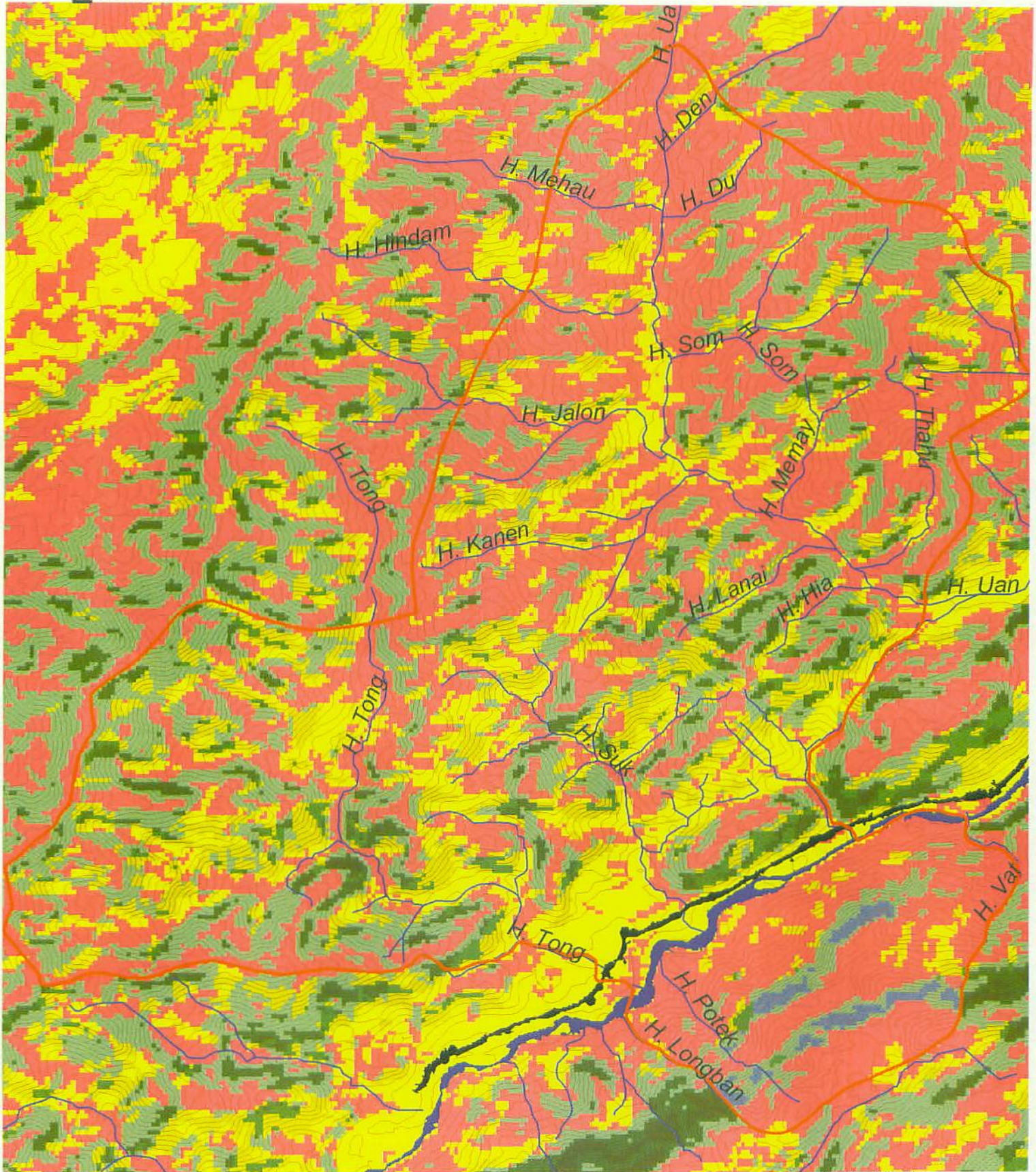


Figure 9 Recommended Land Use Map of Hat Houay

1:37000

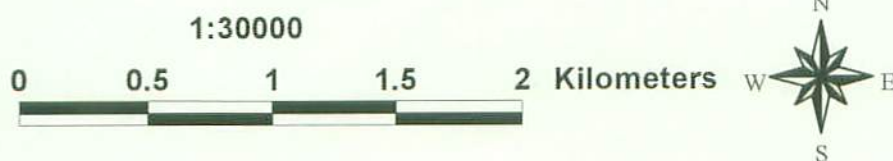
0 0.5 1 1.5 Kilometers




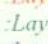
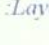




- Boundary-hh-polyline.shp
- Contour-20m-hh.shp
- River-hh.shp
- Road-hh.shp
- Streams-hh.shp
- La\_hh
- Protection forest
- Regeneration forest
- Protection forest
- Regeneration forest/ Agroforestry
- Protection/ Production forest
- Agroforestry/ Agriculture
- Village use forest/ Production forest
- Agriculture
- Conservation forest
- Production forest
- Village use forest/ Production forest
- No Data



Figure 10 SPOT False Color Image of Samton 2003



-  Boundary-samton-polyline.shp
-  Samton-20m.shp
-  Streams-samton.shp
-  Spot-030506-samton.img
-  :Layer\_1
-  :Layer\_2
-  :Layer\_3