

Chapter 3 Project Evaluation and Recommendation

Chapter 3 Project Evaluation and Recommendation

3-1 Expected Effects of the Project

The expected effects of this project are summarized in the following table.

(1) Direct Effects

Present situation and problems	Steps to be taken under this project	Degree of effects and improvement
<ul style="list-style-type: none"> The province of Zambezia has the Quelimane Institute of Health Science, but the buildings and facilities of this institute are owned by Quelimane Provincial Hospital. In other words, the Institute of Health Science is renting buildings and facilities from the hospital. The Institute's facilities and equipment are superannuated, and its facilities, in particular, have grown too small for the Hospital to fully perform its functions. In addition, the hospital demands that the Institute of Health Science be relocated. 	<ul style="list-style-type: none"> To newly construct the Institute of Health Science's facilities in order to improve the quality of training of medical professionals in the city of Quelimane as well as the province of Zambezia. 	<ul style="list-style-type: none"> New facilities, including rooms required for the curriculum, will be constructed for the Quelimane Institute of Health Science in the province of Zambezia, and the educational environment and quality of medical education there will be improved. As a result, the Institute of Health Science will provide medical education on par with that at the other Institutes of Health Science.
<ul style="list-style-type: none"> The main roles of the Quelimane Institute of Health Science include training of medical professionals with intermediary-level skills. However, the Institute of Health Science is unable to fulfill such role because of the poor quality of its facilities and equipment and a shortage of necessary items of medical equipment. The annual total number of graduates of the Institute of Health Science is approximately 70—approximately 20 graduates from the intermediary-level courses and 50 graduates from the basic-level courses. 		<ul style="list-style-type: none"> As the main medical professional training institute in the province of Zambezia, the Institute of Health Science will offer an improved curricula of basic-level courses (assistant pharmacist course, general medical assistant course, mother-and-child health nursing course, general nursing assistant). A total of 120 students will graduate from these courses every 18 months. As the main medical professional training institute in the province of Zambezia, the Institute of Health Science will offer an improved curricula of intermediate-level courses (pharmacy course, general medical course, mother/child health technician course, general nursing course, hospital laboratory technician course). A total of 150 students will graduate from these courses every 30 months.
<ul style="list-style-type: none"> Due to the shortage of equipment for use in the administration department and equipment for use in medical education, it is difficult for the Institute of Health Science to operate and manage its facilities and give lessons according to the curriculum. 	<ul style="list-style-type: none"> To procure the equipment necessary for properly operating and managing the facilities and the equipment of the Institute of Health Science, and giving lessons according to the curriculum drawn up by the Ministry of Health. 	<ul style="list-style-type: none"> It will become possible to give lessons according to the standard curriculum drawn up by the Ministry of Health and to smoothly operate and manage the Institute of Health Science.

(2) Indirect Effects

Applications for admission to the Institute of Health Science are received and accepted from across Mozambique and the graduates of the Institute of Health Science are working in almost all parts of the country. The improvement of the facilities and equipment of the Institute of Health Science will help to spread and improve the quality of healthcare service throughout the country.

3-2 Problems and Recommendations

If the facilities and equipment procured for the Institute of Health Science built under this project are to be continuously and effectively used and properly operated, maintained, and managed, the Mozambique side is required to note the following particulars.

(1) Facility/Equipment Operating, Maintaining, and Managing System

The Institute of Health Science of Quelimane, for which this project is to be implemented, is located on the premises of Quelimane Provincial Hospital and is renting some of the hospital's facilities and equipment. Most of these facilities are superannuated, and much of the equipment is defective. This is largely because the Institute of Health Science lacks in knowledge and awareness of facility/equipment maintenance and management.

The Mozambique side plans to appoint an electrical engineer and mechanical engineer to take charge of the maintenance and management of the facilities and equipment to be procured under this project. These two engineers are to supervise the construction and equipment works together with the superintendent from the start of the construction work. Upon the completion of the project, they are also expected to use their deepened knowledge of maintenance and management of equipment and individual facilities to help establish a full-fledged facility/equipment maintenance and management system. The Institute's staff members and students are also expected to commit themselves to the establishment of a facility/equipment maintenance and management system that makes it possible to maintain and manage the facilities/equipment on a continuous basis.

(2) Cost of Facility/Equipment Operation, Maintenance and Management

The total cost incurred by the Institute of Quelimane for the operation, maintenance, and management of the facilities and equipment to be procured under this project is estimated at 1,939,800,000 meticals (approximately ¥9 million). Electricity and telephone charges are expected constitute a large proportion of the total cost. The facilities to be procured under this project are designed to minimize these expenses. If the staff members and students use electricity and telephones haphazardly, however, the cost of facility operation will likely be a heavy financial burden on the Institute. As such, the Institute must make efforts to raise the awareness of its staff and students on the need to minimize these expenses. This will enable the Institute to take effective preventive measures before unnecessary expenses are incurred.

(3) An Institute of Health Science Open to Communities

The Ministry of Health hopes that community residents will participate in the operation of the health centers and health posts, both of which serve as the links between the community residents and hospitals. As things stand now, however, these medical facilities are not performing their respective functions properly due to the shortage of qualified medical professionals.

This purpose of this project is to improve the facilities and equipment of an Institute of Health Science engaged in the training of medical professionals who are preparing to head health centers and health posts in the future. At present, few of these medical facilities are headed by well-qualified medical professionals. The main purpose of an Institute of Health Science is to help its students acquire knowledge of medical practice. But it is equally important that the students learn how to operate medical facilities and equipment smoothly on the same footing as community residents through close communications with community residents. It is therefore necessary that the classrooms and or auditorium at the Institute of Health Science be open to community residents for activities conducted in common with the students themselves, albeit not to an extent that will hamper the smooth implementation of the Institute of Health Science's curriculum. Through such activities, the students are expected to learn how the health centers and health posts can be operated under the leadership of community residents.

[APPENDIXES]

1. Member List of Study Team
2. Study Schedule
3. List of Parties Concerned
4. Minutes of Discussions
5. Site survey Drawing
6. Site Soil Investigation Data
7. Table for Study Items on the Requested Equipment
8. Table for Equipment Arrangement

1. Member List of Study Team

1. Member List of Study Team

(1) Basic Design Study (November 15, 2003 ~ December 24,2003)

No.	Name	Job Title	Organization
1	Shinji Totsuka	Leader	Deputy Director Second Project Management Division Grant Aid Management Department, JICA
2	Hideki Miyamoto	Technical Advisor	Bureau of International Cooperation International Medical Center of Japan Ministry of Health, Labour & Welfare
3	Yoshimasa Takemura	Planning Management	Second Project Management Division Grant Aid Management Department, JICA
4	Fumio Arai	Project Manager Architectural Design	Yamashita Sekkei Inc.
5	Fumitaka Kamon	Architectural Equipment Planner	Yamashita Sekkei Inc.
6	Osamu Suzuki	Architectural Planner / Procurement• Cost Estimation	Yamashita Sekkei Inc.
7	Shigehito Akagi	Equipment Planner / Procurement• Cost Estimation	Yamashita Sekkei Inc.
8	Yoshiko Fukushima	Interpreter	Yamashita Sekkei Inc.

(2) Draft Report Explanation (March 20, 2004 ~ March 29, 2004)

No.	Name	Job Title	Organization
1	Noboru Tsutsui	Leader	Resident Representative JICA Mozambique Office
2	Fumio Arai	Project Manager Architectural Design	Yamashita Sekkei Inc.
3	Fumitaka Kamon	Architectural Equipment Planner	Yamashita Sekkei Inc.
4	Shigehito Akagi	Equipment Planner / Procurement• Cost Estimation	Yamashita Sekkei Inc.
5	Yoshiko Fukushima	Interpreter	Yamashita Sekkei Inc.

2. Study Schedule

2. Study Schedule

(1) Basic Design Study (November 15, 2003 ~ December 26, 2003)

No.	Date		Place	Official	Consultants	
1	Nov. 15	Sat			·Lv. Tokyo, Arr. Singapore	
2	Nov. 16	Sun	S.A.		·Lv. Singapore, Arr. Johannesburg ·Lv. Johannesburg, Arr. Maputo	
3	Nov. 17	Mon	Maputo		·Courtesy call to Ministry of Health ·Courtesy call to Embassy of Japan ·Meeting at JICA Office	(South Africa) ·Survey on construction field
4	Nov. 18	Tue	"		·Discussion at Ministry of Health ·Survey at Institute of Health Science of Maputo ·Survey at Central Hospital	·Survey on construction company
5	Nov. 19	Wed	Quelimane		·Lv. Maputo, Arr. Quelimane	·Survey on Manufacturer
6	Nov. 20	Thr	"		·Courtesy call to provincial MOH ·Survey at Quelimane Institute project site	·Survey on Agency of Equipment
7	Nov. 21	Fri	"		·Survey construction condition	
8	Nov. 22	Sat	"		·Survey on construction company ·Review Information on project	·Jahannesburg, Arr. Maputo
9	Nov. 23	Sun	Quelimane		·Meeting within team	·Lv. Maputo Arr. Quelimane
10	Nov. 24	Mon	"		·Survey on condition of construction company ·Survey on condition of construction material ·Survey on condition of agents of equipment ·Survey on condition of infrastructure	
11	Nov. 25	Tue	Numpula		·Lv. Quelimane, Arr. Numpula	
12	Nov. 26	Wed	Maputo		·Courtesy call on provincial MOH ·Survey at Numpula Institute ·Lv. Numpula, Arr. Maputo	
13	Nov. 27	Thr	"		·Discussion with Ministry of Health ·Discussion with World Bank, UN and EU, etc.	
14	Nov. 28	Fri	"		·Survey on conditions of consultant	
15	Nov. 29	Sat	"		·Visit on conditions of similar facilities	
16	Nov. 30	Sun	"	·Lv. Tokyo Arr. Singapore	·Meeting within team	
17	Dec. 1	Mon	"	·Lv. Singapore ·Arr. Johannesburg ·Lv. Johannesburg, Arr. Maputo ·Meeting at JICA Mozambique Office ·Courtesy call to Embassy of Japan		
18	Dec. 2	Tue	"	·Courtesy call to Ministry of Health ·visit to Institute of Health Science		
19	Dec. 3	Wed	Quelimane	·Lv. Maputo, Arr. Quelimane ·Courtesy call and discussion with Provincial MOH ·Courtesy call and discussion with Quelimane Institute		
20	Dec. 4	Thr	"	·Survey at the Project site ·Discussion at Quelimane Institute	·Survey on construction field	
21	Dec. 5	Fri	"	·Courtesy call to Quelimane Mayor ·Survey at Zambezia provincial Hospital	·survey on infrastructure	
22	Dec. 6	Sat	"	·Discussion on Minutes ·Survey at Mocuba Training Center		
23	Dec. 7	Sun	Beila	·Lv. Quelimane, Arr. Beila	·Lv. Quelimane, Arr. Maputo	
24	Dec. 8	Mon	"	·Courtesy call to Institute of Health Science of Beila	(Maputo)	
25	Dec. 9	Tue	Maputo	·Collection of Questionnaires ·Lv. Beila, Arr. Maputo	·Survey on construction material ·Survey on condition of agents for equipment	
26	Dec. 10	Wed	"	·Meeting at MOH		
27	Dec. 11	Thr	"	·Discussion on Minutes		

No.	Date		Place	Official	Consultants	
28	Dec. 12	Fri	Maputo	<ul style="list-style-type: none"> · Sign on Minutes · Report to Embassy of Japan Aid JICA · Lv. Maputo, Arr. Johannesburg 		<ul style="list-style-type: none"> · Lv. Maputo · Arr. Johannesburg
29	Dec. 13	Sat	"	<ul style="list-style-type: none"> · Lv. Johannesburg · Arr. Singapore 	<ul style="list-style-type: none"> · Survey Local Construction Market · Survey on Similar facilities 	<ul style="list-style-type: none"> · Arr. Singapore
30	Dec. 14	Sun	"	<ul style="list-style-type: none"> · Lv. Singapore · Arr. Tokyo 		<ul style="list-style-type: none"> · Lv. Singapore, Arr. Tokyo
31	Dec. 15	Mon	"	/	<ul style="list-style-type: none"> · Meeting at MOH 	/
32	Dec. 16	Tue	"		<ul style="list-style-type: none"> · collection of Questionnaire 	
33	Dec. 17	Wed	"		<ul style="list-style-type: none"> · Report to JICA office 	
34	Dec. 18	Thr	S.A.		<ul style="list-style-type: none"> · Lv. Maputo, Arr. Johannesburg 	
35	Dec. 19	Fri	"		<ul style="list-style-type: none"> · Additional survey on construction materials 	
36	Dec. 20	Sat	"		<ul style="list-style-type: none"> · Additional Survey on Construction Field 	
37	Dec. 21	Sun	"		<ul style="list-style-type: none"> · Collection of Information about project 	
38	Dec. 22	Mon	"		<ul style="list-style-type: none"> · Collection of result of soil survey · Additional survey on construction field 	
39	Dec. 23	Tue			<ul style="list-style-type: none"> · Lv. Johannesburg 	
40	Dec. 24	Wed			<ul style="list-style-type: none"> · Arr. Singapore · Lv. Singapore, Arr. Tokyo 	

(2) Basic Design Draft Explanation (March 20, 2004 ~ March 29, 2004)

No.	Date		Time	Activities	Location
1.	Mar. 20	Sat		Lv. Tokyo, Arr. Singapore	Singapore
2.	Mar. 21	Sun	15:00	Lv. Singapore, Arr. Johannesburg Lv. Johannesburg, Arr. Maputo	Maputo
3.	Mar. 22	Mon	08:30 10:00 16:00	Meeting at JICA Office Meeting at MOH and Embassy of Japan	Maputo
4.	Mar. 23	Tue	08:00 14:00	Discussion at MOH Lv. Pauto, Arr. Quelimane	Quelimane
5.	Mar. 24	Wed	08:00	Discussion at Institute of Health Science of Quelimane	Quelimane
6.	Mar. 25	Thr	09:20 13:30	Lv. Quelimane, Arr. Maputo Meeting with MOH	Maputo
7.	Mar. 26	Fri	08:00 15:00 16:00	Meeting with MOH Sign Minutes of Discussion Report to Embassy	Maputo
8.	Mar. 27	Sat	16:00	Lv. Maputo, Arr. Johannesburg	Johannesburg
9.	Mar. 28	Sun		Lv. Johannesburg	
10.	Mar. 29	Mon		Arr. Singapore Lv. Singapore, Arr. Tokyo	

3. List of Parties Concerned

3. List of Parties Concerned

Ministry of Health

Humberto A. Cossa	National Director, Directorate & Cooperation Resources
Jorge Fernando A. Tomo	National director, Directorate of Human Resources
Ricardo Trindade	National Deputy Director, Directorate of Human Resources
Lágrima Mause	Director, Directorate of Human Resources
Obadias B. Machine	Technical Administrative Official
Joaquim Machone	Laboratory Technician Course Coordinator

Zambezia Provincial MOH

Atonio I. I. V. Mussa	Director
Francisco Antonio DaCosta	Directorate of Plan and Cooperation, Technician

MOH Project Plan & Coordination

Basío Alfredo G. Mandlhate	Technical Coordinator
Dionisio Zaqueu	Architect
Samuel Lopes Baule	Staff
Forge Valenzuela	Staff

City of Quelimane

Pio Augusto Matos	Mayor
Nordino Alige	Water Supply Company Registration Section, Project Chief
Junfreino Francisco	Water Supply Company, Registration Section
Luis Mucanjo	Electrical Company, Technical Assistant
Amilcar Assane	Business Expert
Julio Tomas Sulgado	Fire Fighting Directorate, Technical Assistant

Institute of Health Science of Quelimane

Maria Eduarda Sousa Machada	Director
Joao de Jesus Pedro Francisco	Advisor, Pedagogica
Almeida Armando Supinho	Administration Official
Rosário Cosmo	Library Instructor
Betinho Escoba	Library Technician
Francisco António Da Costa	Provincial Planning/Cooperation Section, Technical Official

Institute of Health Science of Maputo

Julio Correia Langa	Director/Advisor, Pedagogica
Momade Sumalgy	Maintenance Manager
Daniel Pedro Chicavel	Administration of Training Section, Section Chief
Jordar de Almeida	Technical Section Chief
Salomao Samuel Nhaca	Course Section Chief
Fernando Basílio Chaguala	Training/Standardization Section, Staff
Lidia Mondlane	Pedagogica Expert
Abubacar Sumalgy	Technical Section Staff

Institute of Health Science of Numpla

Marcelino Vasco	Director
Laura Luís	Director, Pedagogica
Alberto Vaguirra	Provincial Health Director

Institute of Health Science of Beila

Domingo Coimbra	Director
Marta Giroth Dos Santos	Director, Pedagogica
Samuel F. Cuanba	Dental Disease Course Coordinator
Emilia V. Florindo	MCH Nurse Course Coordinator

Beila Central Hospital

Adolfo Figuera	Nurse Supervisor
Helmut Konrad	Analysis Doctor
Eduardo Cacecussa	Laboratory Chief Technician
Ricardo Autunes Molinho	Emergency Outpatient, Section Chief
Barbara Estevao	Pharmacy Technician
Francisco Lizonio	Health Technician
Aissa Vaga	Nurse

Mocuba Training Center

Ricardo Vidal Manuel Limeme	Director
-----------------------------	----------

World Bank

Jean J. De St Antoine	Human Development Official in East/South Africa
Carolyn Jarkin	Health Official

EU

Erik Von Pistohlkors

Second Secretary/Social Sector and Humanitarian Assistance

UNFPA

Angel Mendoza

Technical Official

Zambegia Province Directorate of Public Works

Reino Oliveira Lossola

Technical Higher Official

Weather bureau

Faustino

Observation Official

Embassy of Japan

Kanji Tsushima

Ambassador Extraordinary and Plenipotentiary

Ichiro Muto

Counsellor

Takahiro Iwato

Third Secretary

Akiko Shimohira

Attache (Economic Cooperation)

JICA Mozambique Office

Noboru Tsutsui

Resident Representative

Katsuyoshi Sudo

Deputy Resident Representative

Saeko Kemeyama

Project Formulation Advisor

4. Minutes of Discussions

MINUTES OF DISCUSSIONS
BASIC DESIGN STUDY
ON THE PROJECT FOR IMPROVEMENT OF THE INSTITUTE
OF HEALTH SCIENCE OF QUELIMANE
IN THE REPUBLIC OF MOZAMBIQUE

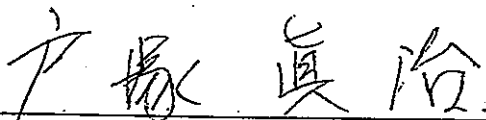
In response to a request from the Government of the Republic of Mozambique (hereinafter referred to as "Mozambique"), the Government of Japan decided to conduct a Basic Design Study on the project for Improvement of the Institute of Health Science of Quelimane (hereinafter referred to as "the Project") and entrusted the study to the Japan International Cooperation Agency (hereinafter referred to as "JICA").

JICA sent to Mozambique the Basic Design Study Team (hereinafter referred to as "the Team"), which is headed by Mr. Shinji Totsuka, Deputy Director, Second Project Management Division, Grant Aid Management Department, Japan International Cooperation Agency, and is scheduled to stay in the country from 16 November to 18 December.

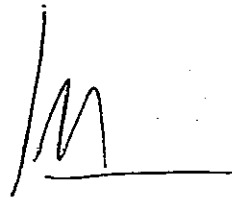
The Team held discussions with the officials concerned of Mozambique and conducted a field survey at the study area.

In the course of discussions and field survey, both parties confirmed the main items described on the attached sheets. The Team will proceed to further works and prepare the Basic Design Study Report.

Maputo December 12, 2003



Mr. Shinji Totsuka
Leader
Basic Design Study Team
Japan International Cooperation Agency



Dr. Jorge Fernando M. Tomo I.R.D., M.H.P.P.,
National Director
Directorate of Human Resources
Ministry of Health
Republic of Mozambique

ATTACHMENT

1. Objectives of the Project

The objective of the project is to improve the educational environment of the Institute of Health Science of Quelimane (hereinafter referred as in "the Institute").

2. Project site

The site of the Project is the Institute of Health Science of Quelimane, Zambezia Province.

3. Responsible and Implementing Agency

The Responsible and Implementing Agency is the Ministry of Health.

4. Items requested by the Government of Mozambique

After discussions with the Team, following items were finally requested by the Mozambican side. JICA will assess the appropriateness of the request and will report the findings to the Government of Japan.

- (1) Construction of new buildings of the Institute
- (2) Procurement of the equipment described in Annex-1

5. Japan's Grant Aid Scheme

- 5-1 The Mozambican side understands the Japan's Grant Aid Scheme explained by the Team, as described in Annex -2.
- 5-2 The Mozambican side will take necessary measures described in Annex-3 for smooth implementation of the Project to be implemented on condition that the Japan's grant aid is extended to the Project.

6. Schedule of the Study

- 6-1 The consultant will proceed to further studies in Mozambique until December 18, 2003.
- 6-2 JICA will prepare the draft report in English and dispatch a mission in order to explain its contents in March 2004.
- 6-3 In case that the contents of the report is accepted in principle by the Government of Mozambique, JICA will complete the final report and send it to the Government of Mozambique around May, 2004.

7. Other relevant issues

- 7-1 The both sides confirmed that the Institute would have following 9 courses (4 basic level courses and 5 middle level courses) and ensure allocation of the personnel necessary for the project;

[Basic level] Pharmaceutical Assistant
General Medical Assistant
Maternal and Child Health Care Nurse
Basic Nurse



[Middle level] Pharmaceutical Technician
General Medical Technician
Maternal and Child Health Care Nurse
General Nurse
Laboratory Technician

7-2 The both sides confirmed that the priority order of the components requested by the Mozambican side was as follows;

1. Facilities for educational and administrative functions
2. Equipment
3. Dormitory
4. Auditorium
5. Housing for teachers

The Mozambican side requested that the dormitory should accommodate more than 200 students. And the Team explained that not all requests by the Mozambican side would be covered in the Project because of the budgetary constraint of the Government of Japan.

7-3 The both sides confirmed that the Mozambican side would take necessary measures for the infrastructure works as follows;

1. Completion of the extension work of the electricity to the site by the end of 2004.
2. Completion of the extension work of the city water supply system to the site by the end of 2004.
3. Completion of the preparation work for the telephone to the site by the end of 2005.

7-4 The Team pointed out that a part of the site would not be in use for the Project because the land was covered with water during rainy season. The both sides confirmed that the Mozambican side would prepare additional or new lands for the Project and clarify the boundary of the entire site by December 15, 2003. In addition, the Mozambican side agreed to prepare following documents by March 2004.

1. Title certificate and official map of the entire site issued by the authorized agency
2. Agreed document on ownership of the entire site between the Institute and the inhabitants in and/or around the site

7-5 The both sides confirmed that the Mozambican side would ensure necessary budget for operation and maintenance for a sustainable activity of the Institute.

7-6 The both sides confirmed that the Project would contribute for the improvement of delivery and quality of health service, especially for rural areas. Hence the Mozambican side shall take necessary measures for the appropriate allocation of the medical personnel.

7-7 The both sides agreed that the Mozambican side would have assignment record of graduates of the Institute and the stability of the work force continuously to evaluate the health service's improvement by the Project.

Annex 1: Equipment lists

Annex 2: Japan's Grant Aid Scheme

Annex 3: Major Undertakings to be taken by Each Government

Equipment List for the Institute of Health Science of Quilimane

Minutes Item No.	Description	Priority
	FURNITURE	
L1-01	SCHOOL DESK	A
L1-02	TABLE (SEMINOR ROOM, READING ROOM, ETC)	B
L1-03	TUTOR'S DESK	A
L1-04	EXECUTIVE DESK	A
L1-05	SECRETARIAL DESK	A
L1-06	CONFERENCE TABLE	B
L1-07	CONFERENCE TABLE (MULTI PURPOSE)	B
L1-08	CHAIRS (SEMINORROOM, READING ROOM, ETC)	A
L1-09	CHAIR WITH SUPPORT ARM (AUDITORIUM)	B
L1-10	COMPUTER TABLE	A
L1-11	COMPUTER CHAIR	A
L1-12	MOBILE WORK STATION FOR COMPUTER	A
L1-13	SQUARE TABLE, REFECTORY	B
L1-14	CHAIR FOR REFECTORY TABLE	B
L1-15	LAB STOOL (LAB & DEMONSTRATION ROOM)	A
L1-16	SINGLE BED	B
L1-17	BED SIDE TABLE	B
L1-18	DORMITORY CUPBOARD	B
L1-19	OFFICE CUPBOARD	C
L1-20	BOOKCASE	A
L1-21	METAL SHELVES FOR LIBRARY	A
L1-22	METAL SHELVES FOR OFFICE SUPPLIES	A
L1-23	CUPBOARD/SHELVES FOR LAUNRY	B
L1-24	KITCHEN CUPBOARD	B
	AUDIOVISUAL EQUIPMENT AND SUPPLIES	
L2-01	OVERHEAD PROJECTORS	A
L2-02	SLIDE PROJECTORS	A
L2-03	TELEVISOR PROVIDED WITH VIDEO PROJECTOR FOR LARGE SCREEN	B
L2-04	WALL SCREEN (SEMINOR ROOM)	B
L2-05	WALL SCREEN (AUDITORIUM)	B
L2-06	PORTABLE SCREEN	A
L2-07	SPARE BULB FOR OHP	C
L2-08	SPARE BULB FOR SLIDE PROJECTORS	C
L2-09	DATA SHOW	C
L2-10	PORTABLE CABINET (TROLLEY FOR PROJECTOR)	A
L2-11	MICROPHONE (TABLE STAND)	B
L2-12	MICROPHONE (FLOOR STAND)	B
L2-13	WIRELESS MICROPHONE	B
L2-14	PORTABLE COLOR CAMERA & ACCESORRIES	B
L2-15	LABNGUAGE LEARNING EQUIPMENT SET (36 STUDENTS)	C
L2-16	RADIO RECORDER	B
L2-18	LASER POINTER	A

Equipment List for the Institute of Health Science of Quilimane

Minutes Item No.	Description	Priority
L2-19	DRY-WIPES WHITEBOARDS	C
L2-20	DRY-WIPE MAGNETIC WHITEBOARD	A
	LABORATORY EQUIPMENT AND LAB SUPPLIES	
L3-01	FIRST AID EQUIPMENT KIT FOR LAB	B
L3-02	BINOCULAR EDUCATIONAL MICROSCOPE	A
L3-04	KIT FOR WATER ANALYSIS	C
L3-05	AUTOCLAVE	A
L3-06	ANALYTICAL BALANCE	A
L3-07	CENTRIFUGE	A
L3-08	FURNACE	C
L3-09	HOT AIR OVEN	A
L3-10	REFRIGERATOR/FREEZER	A
L3-11	pH METER	A
L3-12	STOPWATCH FOR LABS	A
L3-13	DISPENSING EQUIPMENT (SET)	A
L3-14	INCUBATOR	A
L3-15	CULTURE FLASKS/SET	B
L3-16	BOILING FLASKS/SET	B
L3-17	EVAPORATOR	C
L3-18	EXTRACTION APPARATUS	C
L3-19	STILL	A
L3-20	DEIONIZER	C
L3-21	DISTILLATION FLASKS SET	B
L3-22	QUICKFIT GLASSWARE LAB. SET	A
L3-23	TONGS SET	B
L3-24	LABORATORY THERMOMETER	A
L3-25	LAB TRAYS SET	B
L3-26	FUNNEL SET	B
L3-27	CONDENSERS	C
L3-28	COLORIMETER	A
L3-29	TEST TUBE SET	B
L3-30	PHOTOMETER	C
L3-31	TEST TUBE RACK SET	B
L3-32	BATH TANK	A
L3-33	BURETTES	B
L3-34	EDIA BOTTLES	B
L3-35	BEAKERS	B
L3-36	BALANCE RESTS ANTI-VIBRATION	C
L3-37	PETRI DISHES	B
L3-38	SHAKERS	A
L3-39	HOMOGENIZER	C
L3-40	MIXER	A
L3-41	CENTRIFUGE, HAEMATOCRIT	A

Equipment List for the Institute of Health Science of Quilimane

Minutes Item No.	Description	Priority
L3-42	CRUCIBLE/MELTING POT	C
L3-43	MORTAR WITH PESTLE SET	A
L3-44	MICROSCOPE SLIDES	B
L3-45	CUVETTE	C
	ANATOMICAL MODELS AND CHARTS	
L4-01	HUMAN SKELTON REPLICIA FEMALE	A
L4-02	HUMAN SKELTON REPLICIA MALE	A
L4-03	SKELTON WITH MUSCLES ATT	A
L4-04	SKELTON WITH FLEXIBLE SPCOLUMN	A
L4-05	EDUCAITONAL TEACHING TORSO	A
L4-06	ADULT SKULL	A
L4-07	CHILD SKULL	B
L4-08	FETAL SKULL	A
L4-09	PEDIATRIC INJECTION HEAD	A
L4-10	INJECTION TRAINING ARM	A
L4-11	IM INJECTION LEG SIMULATOR	A
L4-12	INTUBATION BABY DOLL	A
L4-13	OBSTETRIC PHANTOM	A
L4-14	FEMALE DOLL (MANEKIN)	A
L4-15	MALE DOLL (MANEKIN)	A
L4-16	SUTURE PRACTICE ARM	A
L4-17	TRACHEOSTOMY CARE SIMULATOR	A
L4-18	SPINAL INJECTION SIMULATOR	A
L4-19	HEART	A
L4-20	RESPIRATORY ORGAN & HEART	A
L4-21	URINARY SYSTEM	A
L4-22	KIDNEY, NEPHRON & GLOMERULUS	A
L4-23	NOSE & OLPHATORY APPARATUS SET	A
L4-24	DIGESTIVE SYSTEM	A
L4-25	PREGNANCY SERIES	A
L4-26	SKIN MODEL	A
L4-27	ANATOMICAL CHARTS (SET)	B
	MEDICAL INSTRUMENTS & EQUIPMENT	
L5-01	STETHOSCOPE BINAURAL	A
L5-02	STETHOSCOPE MONO AURAL (FETAL/PINARD)	A
L5-03	SPHYGMOMANOMETER-ANEROID	A
L5-04	SPHYGMOMANOMETER-MERCURIAL	A
L5-05	WEIGHING SCALE-ADULT	A
L5-06	WEIGHING SCALE-BABY	A
L5-07	EXAMINATION COUCH	A
L5-08	HOSPITAL BED	A
L5-09	DRESSING CARRIAGE	A
L5-10	INSTRUMENT TABLE	A

Equipment List for the Institute of Health Science of Quilimane

Minutes Item No.	Description	Priority
L5-11	HAND STAND SUPPORT	A
L5-12	BODY CLEANING TOWEL TROLLEY	C
L5-13	DOUBLE BASIN STAND	A
L5-14	INSTRUMENT/DRESSING TABLE	A
L5-15	CATHETER TRAY	A
L5-16	FORCEPS STAND	A
L5-17	DRESSING JAR	A
L5-18	HEMOSTATIC FORCEPS SET	B
L5-19	SURGICAL SUTURE NEEDLE SET	B
L5-20	NEEDLE HOLDER SET	B
L5-21	OPERATING KNIFE SET	B
L5-22	SCISSORS SET	B
L5-23	RESUSCITATOR FOR BOTH NEONATAL & ADULT	A
L5-24	BREAST PUMP	B
L5-25	VAGINAL SPECULUM	A
L5-26	SURGEONS GLOVES	A
L5-27	VOLUMETRIC FLASKS	B
L5-28	INTRAVENOUS INFUSION SET	A
L5-29	DROPPING BOTTLE	A
L5-30	SURGEON NAIL SCISSORS	A
L5-31	SURGEON HAND BRUSH	A
L5-32	ELASTO-RUBBER BANDAGE SET	A
L5-33	NASOGASTRIC FEEDING SET	A
L5-34	OTOSCOPE SET	A
L5-35	RINOSCOPE SET	A
L5-36	REMOVAL SUTURE SET	A
L5-37	CUVETTE	A
L5-38	AIRWAY SET	A
L5-39	AMBU-BAG SET	A
L5-40	ENDO-TRACHEAL TUBE SET	A
L5-41	STEAM PRESSURE STERILISER, PORTABLE	A
L5-42	PERCUSSION HAMMER	A
L5-43	SPIROTEST	B
L5-44	GONIOMETER SET	A
L5-45	SUCTION UNIT, MANUAL, FOOT PEDAL	A
L5-46	URETHRAL CATHETER	A
	OFFICE MACHINE, EQUIPMENT & SUPPLIES	
L6-01	PHOTOCOPY MACHINE HIGH CAPACITY	A
L6-02	TONOR FOR L6-01 PHOTOCOPY MACHINE	C
L6-03	PHOTOCOPY MACHINE MIDDLE CAPACITY	A
L6-04	TONOR FOR L6-03 PHOTOCOPY MACHINE	C
L6-05	FAX MACHINE	B
L6-06	TONOR FOR L6-05 FAX MACHINE	C

Equipment List for the Institute of Health Science of Quilimane

Minutes Item No.	Description	Priority
L6-07	DESK TOP COMPUTER (FOR TRAINING)	A
L6-08	STABILIZER FOR L6-07 COMPUTER	A
L6-09	PRINTER FOR L6-07 COMPUTER	A
L6-10	TONOR FOR L6-09 PRINTER	C
L6-11	DESK TOP COMPUTER (FOR OFFICE USE)	A
L6-12	STABILIZER FOR L6-11 COMPUTER	A
L6-13	PRINTER FOR L6-11 COMPUTER	A
L6-14	TONOR FOR L6-13 PRINTER	C
L6-16	DICTATION SYSTEM FOR OFFICE	C
L6-17	DESKTOP PRINT/DISPLAY CALCULATOR	C
L6-18	POCKET CALCULATOR-STUDENT USE	A
L6-19	SCIENTIFIC CALCULATOR	A
	KITCHEN EQUIPMENT AND UTENSILS	
L7-01	ELECTRIC COOKER (INDUSTRIAL TYPE)	B
L7-02	BAIN-MARIE/HOT CUPBOARD SERVERY	B
L7-03	PLATING UP CART (700 X 1200 X 900mm)	B
L7-04	FRY TOP GRIDER (INDUSTRIAL)	B
L7-05	CONVECTION OVEN (INDUSTRIAL TYPE)	B
L7-31	REFRIGERATOR 500 LITRES	B
L7-32	REFRIGERATOR 700 LITRES	B
L7-33	CHEST FREEZER 270 LITRES TROICALIZED	B
L7-34	DRINKING FOUNTAIN SS 20 LITERS	C
	SANITARY EQUIPMENT	
L8-01	WASHING MACHINE - INDUSTRIAL TYPE	C
L8-02	STEAM IRON WITH ACCESSORIES	C
L8-03	VACUUM CLEANER (MULTIPURPOSE)	C
L8-04	SPARE BAS FOR VACUUM CLEANER	C
	VEHICLES	
L11-1	MINI BUS (LARGE)	B
L11-2	MINI BUS (SMALL)	B
L11-3	PICK-UP TRACK	B

Priority

- A: Necessary for the activities of Institute,
 B: Further examination is required,
 C: Low priority and/or not available under the grant aid scheme

Japan's Grant Aid Program

1. Japan's Grant Aid Procedures

(1) The Japan's Grant Aid Program is executed by the following procedures.

Application	(request made by a recipient country)
Study	(Basic Design Study conducted by JICA)
Appraisal & Approval	(appraisal by the Government of Japan and approval by the Cabinet of Japan)
Determination of Implementation	(Exchange of Notes between both Governments)
Implementation	(implementation of the Project)

(2) Firstly, an application or a request for a Grant Aid project submitted by the recipient country is examined by the Government of Japan (the Ministry of Foreign Affairs) to determine whether or not it is eligible for Japan's Grant Aid. If the request is deemed appropriate, the Government of Japan assigns JICA to conduct a study on the request.

Secondly, JICA conducts the study (Basic Design Study), using (a) Japanese consulting firm(s).

Thirdly, the Government of Japan appraises the project to see whether or not it is suitable for Japan's Grant Aid Program, based on the Basic Design Study Report prepared by JICA and the results are then submitted to the cabinet for approval.

Fourthly, the project approved by the cabinet becomes official with the Exchange of Notes signed by the Government of Japan and the recipient country.

Finally, for the implementation of the Project, JICA assists the recipient country in preparing contracts and so on.

2. Contents of the Study

(1) Contents of the Study

The purpose of the Basic Design Study conducted by JICA on a requested project is to provide a basic document necessary for appraisal of the project by the Japanese Government. The contents of the Study are as follows:

- a) confirmation of the background, objectives, benefits of the project and also institutional capacity of agencies concerned of the recipient country necessary for project implementation,
- b) evaluation of the appropriateness of the project for the Grant Aid Scheme from a technical, social and economical point of view,
- c) confirmation of items agreed on by the both parties concerning a basic concept of the project,
- d) preparation of a basic design of the project,

e) estimation of cost of the project.

The contents of the original request are not necessarily approved in their initial form as the contents of the Grant Aid project. The Basic Design of the project is confirmed considering the guidelines of Japan's Grant Aid Scheme.

Final project components are subject to approval by the Government of Japan and therefore may differ from an original request. Implementing the project, the Government of Japan requests the recipient country to take necessary measures involved which are itemized on Exchange of Notes.

(2) Selection of Consultants

For smooth implementation of the study, JICA uses (a) registered consulting firm(s). JICA selects (a) firm(s) based on the proposals submitted by the interested firms. The firm(s) selected carry(ies) out a Basic Design Study and write(s) a report, based upon terms of reference set by JICA.

The consulting firm(s) used for the study is (are) recommended by JICA to a recipient country after Exchange of Notes, in order to maintain technical consistency and also to avoid any undue delay in implementation should the selection process be repeated.

3. Japan's Grant Aid Scheme

(1) What is Grant Aid?

The Grant Aid Program provides a recipient country with non reimbursable funds to procure the equipment and services (engineering services and transportation of the products, etc.) for economic and social development of the country under principles in accordance with relevant laws and regulations of Japan. The Grant Aid is not supplied through the donation of materials or such.

(2) Exchange of Notes (E/N)

Both Governments concerned extend Japan's Grant Aid in accordance with the Exchange of Notes in which the objectives of the Project, period of execution, conditions and amount of the Grant Aid etc., are confirmed.

(3) "The period of the Grant Aid" means one Japanese fiscal year which the Cabinet approves the Project for. Within the fiscal year, all procedure such as Exchange of Notes, concluding a contract with (a) consulting firm(s) and (a) contractor(s) and a final payment to them must be completed.

However, in case of delays in delivery, installation or construction due to unforeseen factors such as weather, the period of the Grant Aid can be further extended for a maximum of one fiscal year at most by mutual agreement between the two Governments.

(4) Under the Grant, in principle, products and services of origins of Japan or the recipient

country are to be purchased.

When the two Governments deem it necessary, the Grant may be used for the purchase of products or services of a third country.

However the prime contractors, namely, consulting contractor and procurement firms, are limited to "Japanese nationals". (The term "Japanese nationals" means persons of Japanese nationality or Japanese corporations controlled by persons of Japanese nationality.)

(5) Necessity of the "Verification"

The Government of the recipient country or its designated authority will conclude contracts denominated in Japanese yen with Japanese nationals. The Government of Japan shall verify those contracts. The "Verification" is deemed necessary to secure accountability to Japanese tax payers.

(6) Undertakings Required to the Government of the Recipient Country

In the implementation of the Grant Aid project, the recipient country is required to undertake such necessary measures as the following:

- a) to secure land necessary for the sites of the Project,
- b) to provide facilities for distribution of electricity, water supply and drainage and other incidental facilities in and around the sites,
- c) to secure buildings prior to the installation work in case the project is providing equipment,
- d) to ensure all the expenses and prompt execution for unloading, customs clearance at the port of disembarkation of the products purchased under the Grant Aid,
- e) to exempt Japanese nationals from customs duties, internal taxes and other fiscal levies which will be imposed in the recipient country with respect to the supply of the products and services under the Verified Contracts,
- f) to accord Japanese nationals whose services may be required in connection with the supply of the products and services under the Verified Contracts, such facilities as may be necessary for their entry into the recipient country and stay therein for the performance of their work.

(7) Proper Use

The recipient country is required to maintain and use the facilities constructed and the equipment purchased under the Grant Aid properly and effectively and to assign staff necessary for the operation and maintenance as well as to bear all expenses deemed necessary other than those covered by the Grant Aid.

(8) Re-export

The products purchased under the Grant Aid shall not be re-exported from the recipient country.

(9) Banking Arrangement (B/A)

a) The Government of the recipient country or its designated authority shall open an account in the name of the Government of the recipient country in a bank in Japan. The Government of Japan will execute the Grant Aid by making payments in Japanese yen to cover the obligations incurred by Government of the recipient country or its designated authority under the Verified Contracts.

b) The payments will be made when payment requests are presented by the bank to the Government of Japan under an Authorization to Pay issued by the Government of the recipient country or its designated authority.

(10) Authorization to Pay (A/P)

The Government of the recipient country should bear an advising commission of an Authorization to Pay and payment commissions to the Bank.



Major Undertakings to be taken by Each Government (Construction)

NO	Items	To be covered by Grant Aid	To be covered by Recipient side
1	To secure land		●
2	To clear, level and reclaim the site when needed		●
3	To construct gates and fences in and around the site		●
4	To construct the parking lot	●	
5	To construct roads		
1) Within the site		●	
2) Outside the site			●
6	To construct the building	●	
7	To provide facilities for the distribution of electricity, water supply, drainage and other incidental facilities		
1) Electricity			
a. The distributing line to the site			●
b. The drop wiring and internal wiring within the site		●	
c. The main circuit breaker and transformer		●	
2) Water Supply			
a. The city water distribution main to the site			●
b. The supply system within the site (receiving and/or elevated tanks)		●	
3) Drainage			
a. The city drainage main (for storm, sewer and others) to the site			●
b. The drainage system (for toilet sewer, ordinary waste, storm drainage and others) within the site		●	
4) Telephone System			
a. The telephone trunk line to the main distribution frame / panel (MDF) of the building			●
b. The MDF and the extension after the frame / panel		●	
5) Furniture and Equipment			
a. General furniture			●
b. Project furniture and equipment		●	
8	To bear the following commissions to a bank of Japan for the banking		
1) Advising commission of A/P			●
2) Payment commission			●
9	To ensure prompt unloading and customs clearance at the port of		
1) Marine(Air) transportation of the products from Japan to the recipient country		●	
2) Tax exemption and customs clearance of the products at the port of disembarkation			●
3) Internal transportation from the port of disembarkation to the project site		●	

10	To accord Japanese nationals whose services may be required in connection with the supply of the products and the services under the verified contract such facilities as may be necessary for their entry into the recipient country and stay therein for the performance of their work		•
11	To exempt Japanese nationals from customs duties, internal taxes and other fiscal levies which may be imposed in the recipient country with respect to the supply of the products and services under the verified contract		•
12	To maintain and use properly and effectively the facilities constructed and equipment provided under the Grant Aid		•
13	To bear all the expenses deem necessary, other than those to be borne by the Grant Aid, for construction of the facilities as well as for the transportation and installation of the equipment		•

LM

(A)

**MINUTES OF DISCUSSIONS
ON THE BASIC DESIGN STUDY
ON THE PROJECT FOR IMPROVEMENT OF THE INSTITUTE
OF HEALTH SCIENCE OF QUELIMANE
IN THE REPUBLIC OF MOZAMBIQUE
(EXPLANATION ON DRAFT FINAL REPORT)**

In November 2003, the Japan International Cooperation Agency (hereinafter referred to as "JICA") dispatched the Basic Design Study Team on the Project for Improvement of the Institute of Health Science of Quelimane (hereinafter referred to as "the Project") to the Republic of Mozambique (hereinafter referred to as "Mozambique"), and through discussion, field survey, and technical examination of the study results in Japan, JICA prepared a draft final report of the study.

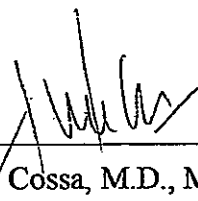
In order to explain and to consult the Mozambique side on the components of the draft final report, JICA dispatched to Mozambique the Draft Final Report Explanation Team (hereinafter referred to as "the Team"), which is headed by Mr. Noboru TSUTSUI, Resident Representative, Mozambique Office of Japan International Cooperation Agency from March 21, 2004 to March 27, 2004.

As a result of discussions, both parties confirmed the main items described on the attached sheets.

Maputo March 26, 2004

筒井 昇

Mr. Noboru TSUTSUI
Leader
Draft Final Report Explanation Team
Japan International Cooperation Agency



Dr. Humberto Cossa, M.D., M.P.H.
National Director
Directorate of Planning and Co-operation
Ministry of Health
Republic of Mozambique

ATTACHMENT

1. Components of the Draft Report

The Government of Mozambique has agreed and accepted in principle the components of the draft report explained by the Team. The facilities described in ANNEX-1 and the equipment described in ANNEX-2 were finally requested by the Mozambican side.

Both parties confirmed that the components to be included in the Project would be finalized after further analysis in Japan.

2. Japan's Grant Aid Scheme

The Mozambican side understood the Japan's Grant Aid Scheme and necessary measures to be taken by the Government of Mozambique explained by the Team, described in Annex-2 and Annex-3 of the Minutes of Discussions signed by the both parties on December 12, 2003.

3. Schedule of the Study

JICA will complete the final report in accordance with the confirmed items and send it to the Government of Mozambique around June 2004.

4. Other Relevant Issues

4-1. Personnel and Budget Allocation

Mozambican Ministry of Health will allocate sufficient qualified staff and budget to functionally operate and maintain the facilities and equipment to be covered by the Project.

4-2. Works Covered by the Mozambican Side

The Mozambican side assured to complete following works by the date mentioned below, and to timely inform commencement and completion of works to the Japanese side.

- 1) The extension work of electricity to the site by the end of 2004.
- 2) The extension work of the city water supply system to the site by the end of 2004.
- 3) The preparation work for the telephone to the site by the end of 2005.

4-3. Necessary Arrangement for Construction of the Institute of Health Science

Mozambican Ministry of Health agreed to carry out the following arrangements in accordance with the schedule of the Project;

- 1) To ensure necessary arrangement of building permit and any other authorization required for construction of the Institute of Health Science.
- 2) To ensure prompt tax exemption and customs clearance of the products at the port of disembarkation.

- 3) To reimburse VAT concerning local purchase under the Project, to Japanese contractor(s).

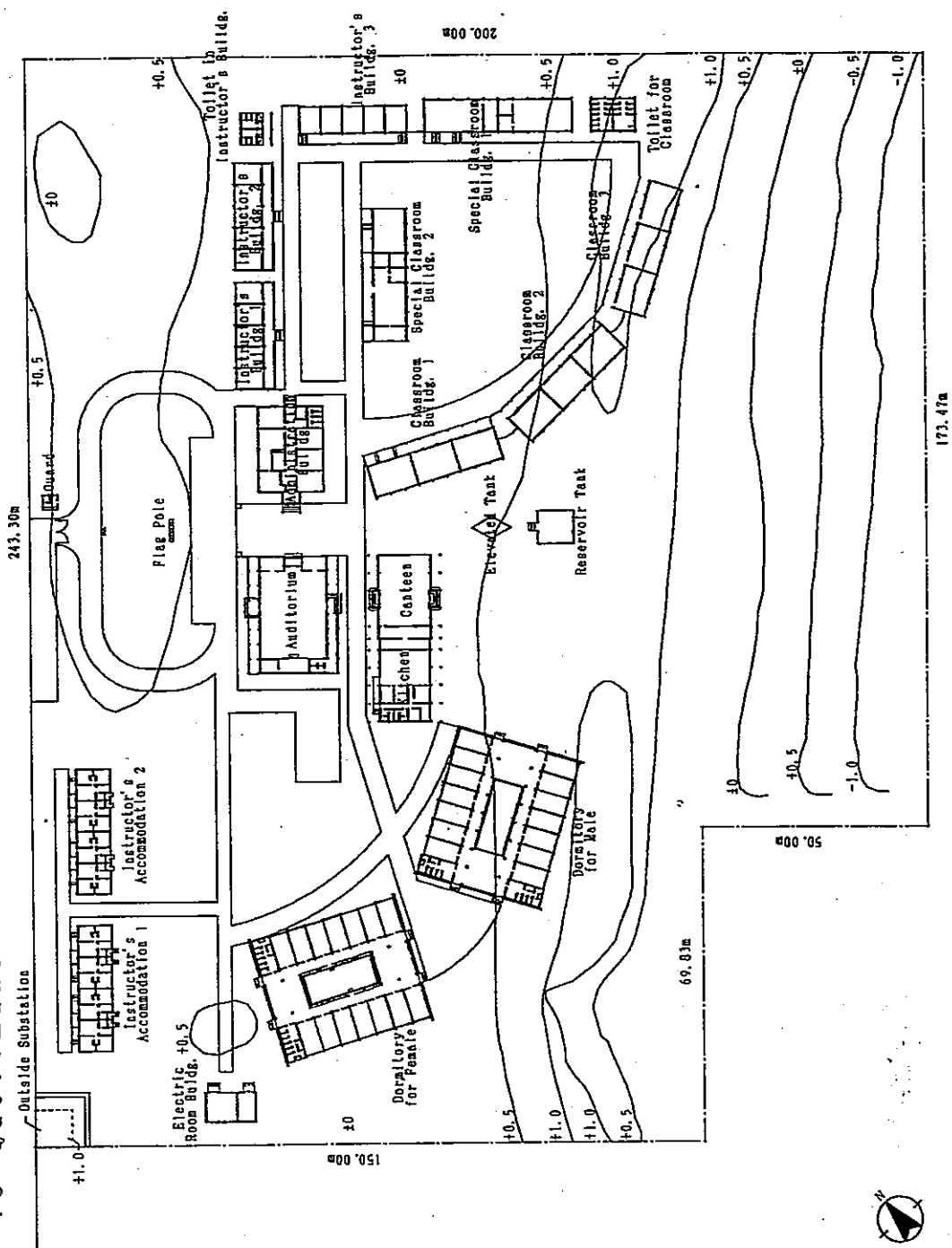
4-4. The comment of Mozambican Ministry of Health.

Mozambican side submitted technical comments on the Draft Final Report. The Team will analyze it in Japan and will communicate with the Ministry of Health to find the solution to the comment before Final Report is submitted.

ANNEX-1: Location of Planned Facilities

ANNEX-2: List of Equipment

To Quelimane
Main Road (40)
To Zalalala Beach



The Project for Improvement of the Institute of Health Science of Quelimane
in the Republic of Mozambique

Site Plan

1

Project Item No.	Project Description	Q'TY
	FURNITURE	
L1-01	SCHOOL DESK	270
L1-02	DORMITORY DESK	50
L1-03	TABLE, READING ROOM	12
L1-04	TABLE, AUDITORIUM	25
L1-04-1	CART FOR TABLE, AUDITORIUM	3
L1-05	DESK, TUTOR	40
L1-06	DESK, SCHOOL ADVISOR	3
L1-07	DESK, GENERAL ADMINISTRATION	10
L1-08	CONFERENCE TABLE	1
L1-09	CONFERENCE TABLE (MULTI PURPOSE)	12
L1-10	CHAIRS, READING ROOM	32
L1-11	CHAIRS, STUTENT, CLASSROOM	270
L1-12	CHAIRS, SCHOOL ADVISOR	3
L1-13	CHAIRS, TUTOR	40
L1-14	CHAIRS, GENERAL ADMINISTRATION	13
L1-15	CHAIRS, DORMITORY	200
L1-16	CHAIRS, CONFERENCE	32
L1-17	CHAIRS, AUDITORIUM	310
L-1-17-1	CART FOR CHAIRS, AUDITORIUM	35
L1-18	COMPUTER TABLE	16
L1-19	COMPUTER CHAIR	35
L1-20	MOBILE WORK STATION FOR COMPUTER	5
L1-21	TABLE, REFECTORY	24
L1-22	CHAIRS, REFECTORY	144
L1-23	LAB STOOL	30
L1-24	LAB TABLE	3
L1-25	BUNK-BED	100
L1-26	BOOKCASE	27
L1-27	METAL SHELVES FOR LIBRARY	38
L1-28	METAL SHELVES FOR GENERAL PUROPOSE	72
L1-29	METAL CABINET FOR GENERAL PURPOSE	26
L1-30	TABLE, LIBRARY	5
L1-31	LAB TABLE, EQUIPMENT	5
	AUDIOVISUAL EQUIPMENT	
L2-01	OVERHEAD PROJECTORS	2
L2-02	SLIDE PROJECTORS	2
L2-03	MONITOR, VIDEO PLAYER, DATA PROJECTOR	1

A.T

Mh

L2-04	WALL SCREEN, AUDITORIUM	1
L2-05	SCREEN, PORTABLE	4
L2-06	AUDIO SET	1
L2-07	DRY-WIPE MAGNETIC WHITEBOARD	4
L2-08	BLACKBOARD	11
	LABORATORY EQUIPMENT	
L3-01	BINOCULAR EDUCATIONAL MICROSCOPE	30
L3-02	AUTOCLAVE, PORTABLE	2
L3-03	AUTOCLAVE, LABORATORY	1
L3-04	ANALYTICAL BALANCE	2
L3-05	CENTRIFUGE	2
L3-06	HOT AIR OVEN	2
L3-07	REFRIGERATOR	1
L3-08	FREEZER	1
L3-09	pH METER	2
L3-10	STOPWATCH FOR LABS	2
L3-11	DISPENSING EQUIPMENT (SET)	4
L3-12	INCUBATOR	2
L3-13	WATER STILL	1
L3-14	GLASSWARE LAB. SET	2
L3-15	FUNNEL SET	4
L3-16	COLORIMETER	2
L3-17	BATH TANK	2
L3-18	SHAKERS	2
L3-19	MIXER	2
L3-20	CENTRIFUGE, HAEMATOCRIT	2
L3-21	MORTAR WITH PESTLE SET	4
	ANATOMICAL MODELS AND CHARTS	
L4-01	HUMAN SKELTON REPLICA FEMALE	1
L4-02	HUMAN SKELTON REPLICA MALE	1
L4-03	SKELTON WITH MUSCLES ATT	1
L4-04	SKELTON WITH FLEXIBLE SPCOLUMN	1
L4-05	EDUCAITONAL TEACHING TORSO	2
L4-06	ADULT SKULL	1
L4-07	CHILD SKULL	1
L4-08	FETAL SKULL	1
L4-09	PEDIATRIC INJECTION HEAD	2
L4-10	INJECTION TRAINING ARM	2
L4-11	IM INJECTION LEG SIMULATOR	2
L4-12	INTUBATION BABY DOLL	2
L4-13	OBSTETRIC PHANTOM	1

A.T

111

L4-14	FEMALE DOLL (MANEKIN)	1
L4-15	MALE DOLL (MANEKIN)	1
L4-16	SUTURE PRACTICE ARM	2
L4-17	TRACHEOSTOMY CARE SIMULATOR	2
L4-18	SPINAL INJECTION SIMULATOR	2
L4-19	HEART	2
L4-20	RESPIRATORY ORGAN & HEART	2
L4-21	URINARY SYSTEM	2
L4-22	KIDNEY, NEPHRON & GLOMERULUS	2
L4-23	NOSE & OLPHATORY APPARATUS SET	2
L4-24	DIGESTIVE SYSTEM	2
L4-25	PREGNANCY SERIES	2
L4-26	SKIN MODEL	2
L4-27	ANATOMICAL CHARTS (SET)	2
	MEDICAL INSTRUMENTS & EQUIPMENT	
L5-01	STETHOSCOPE BINAURAL	30
L5-02	STETHOSCOPE MONO AURAL (FETAL/PINARD)	30
L5-03	SPHYGMOMANOMETER-ANEROID	10
L5-04	SPHYGMOMANOMETER-MERCURIAL	10
L5-05	WEIGHING SCALE, BABY	1
L5-06	EXAMINATION COUCH	2
L5-07	HOSPITAL BED	3
L5-08	DRESSING CARRIAGE	1
L5-09	INSTRUMENT TABLE	1
L5-10	HAND STAND SUPPORT	1
L5-11	DOUBLE BASIN STAND	1
L5-12	INSTRUMENT/DRESSING TABLE	1
L5-13	CATHETER TRAY	1
L5-14	FORCEPS STAND	6
L5-15	DRESSING JAR	6
L5-16	DRESSING SET	6
L5-17	SURGICAL SUTURE NEEDLE SET	6
L5-18	SUTURE SET	6
L5-19	SURGICAL INSTRUMENT SET	6
L5-20	DELIVERY INSTRUMENT SET	6
L5-21	RESUSCITATOR FOR BOTH NEONATAL & ADULT	1
L5-22	BREAST PUMP	2
L5-23	VAGINAL SPECULUM	6
L5-24	EDUCATIONAL MATERIALS & CONSUMABLES	6
L5-25	VOLUMETRIC FLASKS	6
L5-26	SURGEON HAND BRUSH	6

A.T

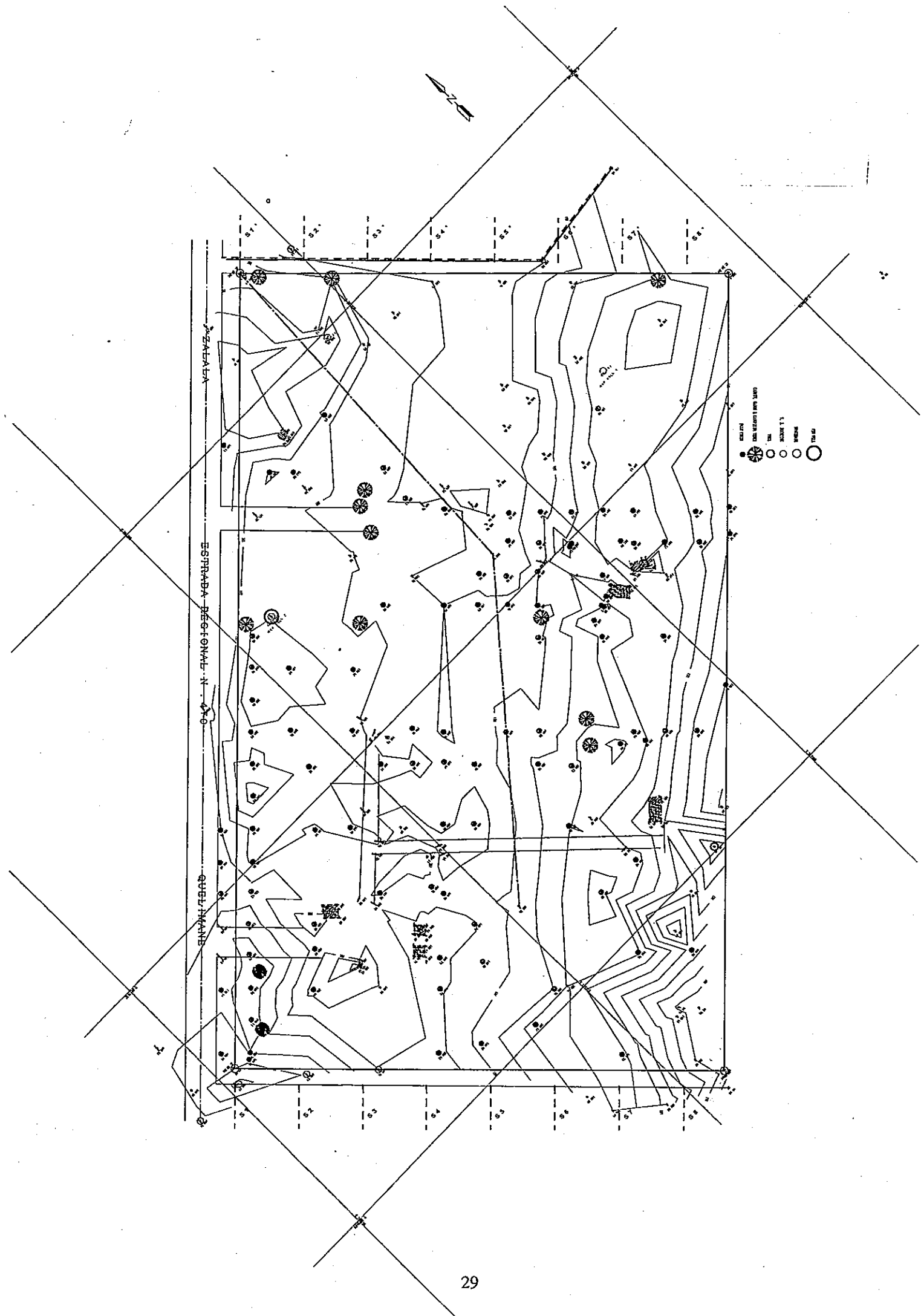
Handwritten signature

L5-27	OTOSCOPE SET	2
L5-28	RINOSCOPE SET	2
L5-29	REMOVAL SUTURE SET	6
L5-30	AIRWAY SET	2
L5-31	AMBU-BAG SET	2
L5-32	BOILING STERILIZER	1
L5-33	PERCUSSION HAMMER	6
L5-34	SPIROTEST	2
L5-35	GONIOMETER SET	2
L5-36	SUCTION UNIT, MANUAL, FOOT PEDAL	2
OFFICE MACHINE AND EQUIPMENT		
L6-01	PHOTOCOPY MACHINE WITH SORTER	1
L6-02	PHOTOCOPY MACHINE, GENERAL	2
L6-03	DESK TOP COMPUTER (FOR TRAINING)	16
L6-04	PRINTER (FOR TRAINING)	1
L6-05	DESK TOP COMPUTER (FOR OFFICE USE)	5
L6-06	PRINTER (FOR OFFICE USE)	5
VEHICLES		
L11-01	BUS, MIDDLE SIZE	1
L11-02	BUS, SMALL SIZE	1

AT

JK

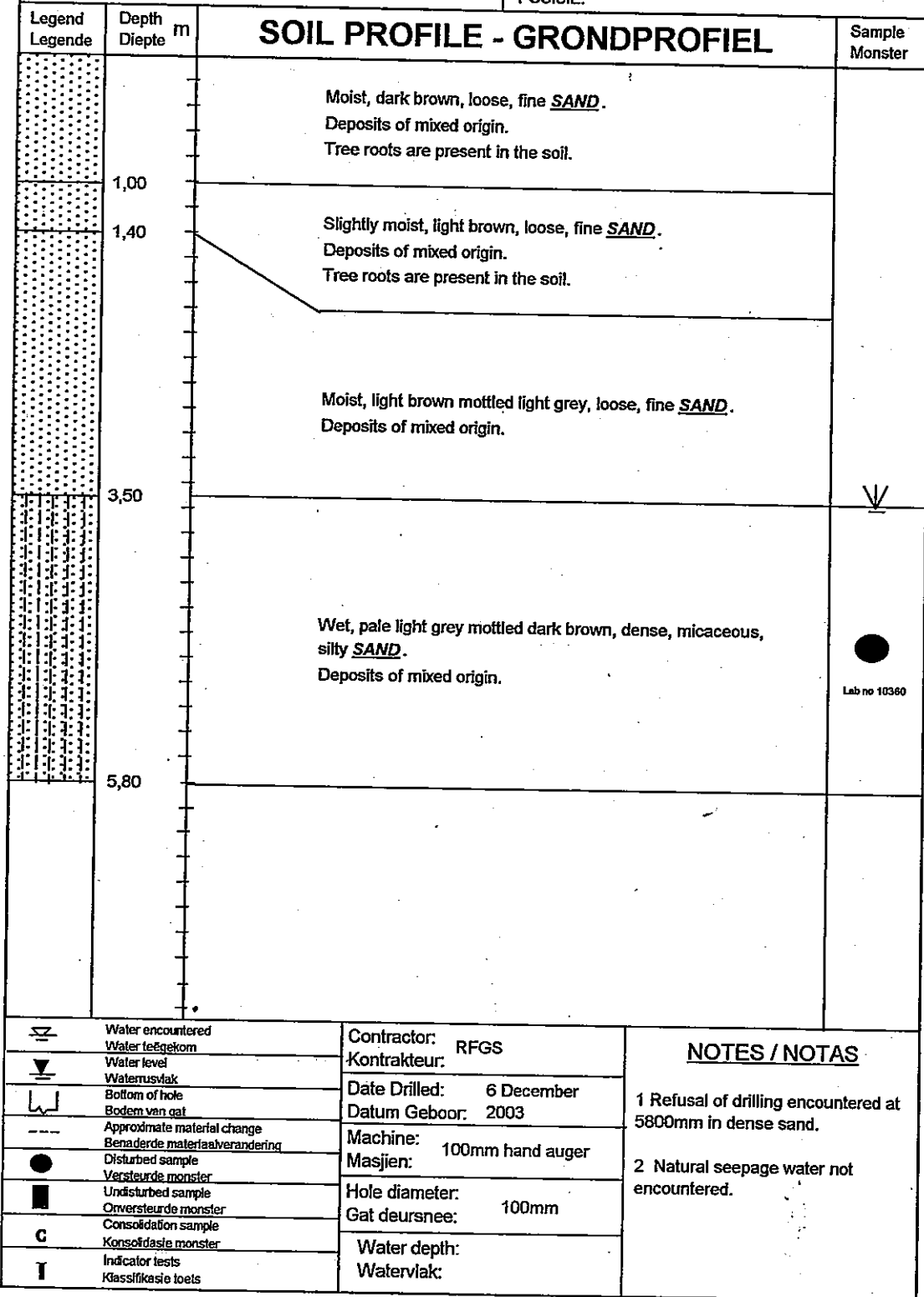
5. Site Survey Drawing





6. Site Soil Investigation Data

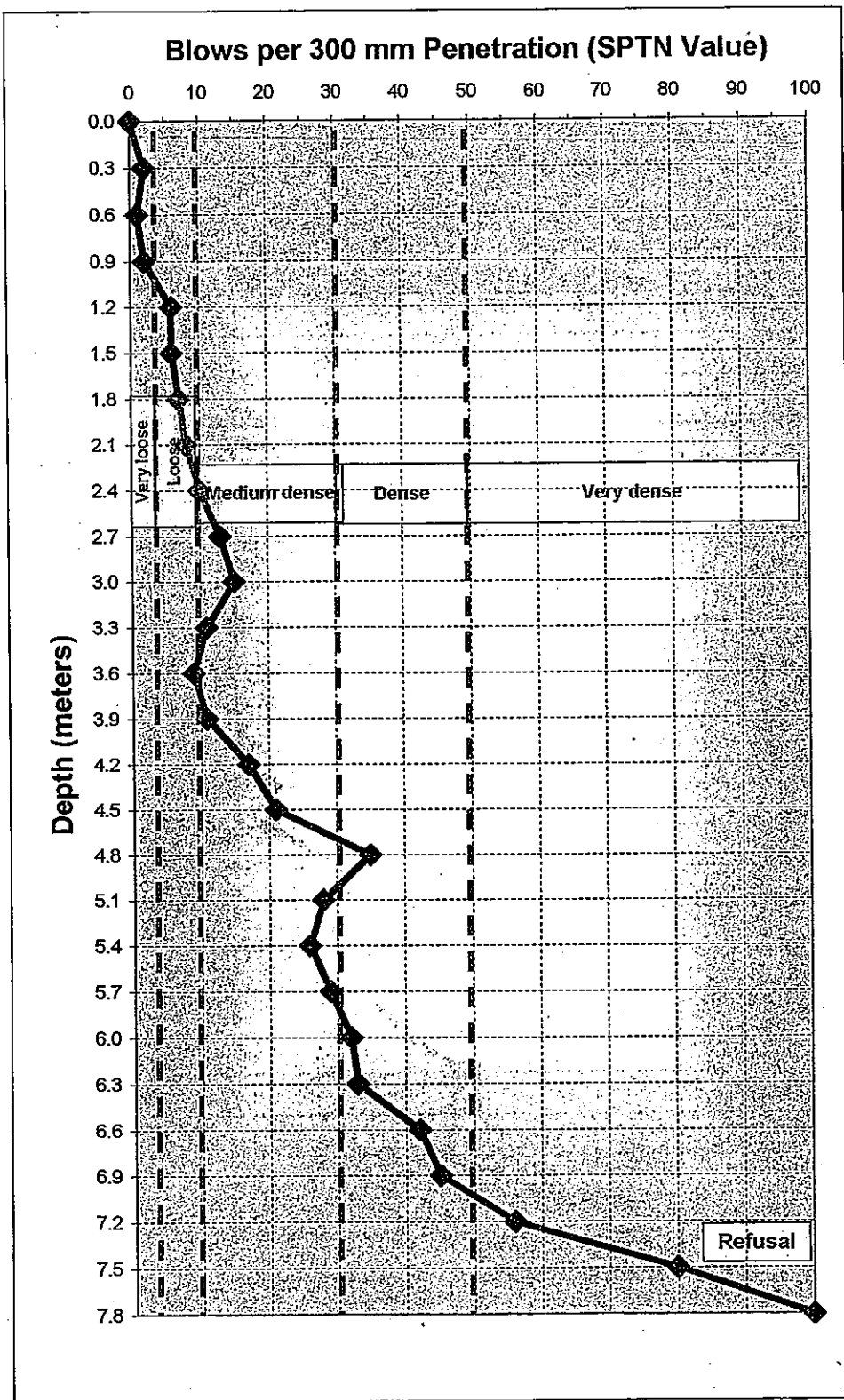
PROJECT: PROJEK: Proposed New Institute of Health Science	BORE HOLE: 1 BOORGAT: 1	SHEET No: 1 Vel Nr: 1
SITE: TERREIN: Quelimane, Zambezia Province, Republic of Mozambique	LOGGED BY: FJB BESKRYF: FJB	DATE: 18 December DATUM: 2003
CLIENT: KLIENT: Yamashita Sekkei Inc	LOCATION: POSISIE:	



**SOIL
KRAFT**

SOIL PROFILE : BORE HOLE 1

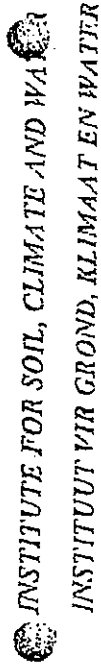
FIG A3



**SOIL
KRAFT**

**QUELIMANE CLINIC: PENETRATION CURVE
: DPSH 3**

**FIGURE
B3**



Client: MR STILIAN

Klient:

PROFURO INTERNATIONAL LTD
MAPUTO

MOZAMBIQUE

Tel: 09258 780489 / 7806

Fax / Faks 09258 780358

Date / Datum 2004/03/23

RESULTS FOR REPORT No: WATER 200304 3731
RESULTATE VIR VERSLAG Nr:

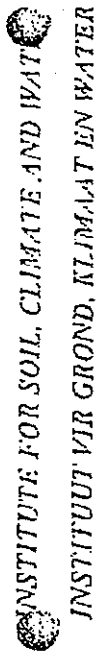
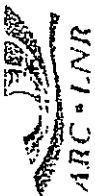
WT	LabNo	SENDER_NR	1	2	3	4	5	6	7	8	9	10	11	12
			pH	NO3	P-	SO4	NH	Cl	Se	Pb	Cd	As	Hg	Zn
W	3927	WE1.1	N/A	mg/l	mg/l	mg/l	mg/l	mg/l	µg/l	µg/l	µg/l	µg/l	µg/l	µg/l
			6.95	8.94	0	71.14	6887.34	1882.6	0.001	0.001	<0.001	<0.001	<0.001	<0.001
W	3928	WELL 2	7.15	96.09	0	98.50	674.24	22315.2	0.001	0.001	<0.001	<0.001	<0.001	<0.001

METHODS USED FOR ANALYSIS :

Serial	Method
1	Selected Water Analysis Grp
2	Selected Water Analysis Grp1
3	Selected Water Analysis Grp
4	Selected Water Analysis Grp1

Serial	Method
5	Selected Water Analysis Grp1
6	Selected Water Analysis Grp1
7	Water Analysis Grp 3
8	Water Analysis Grp 3

Serial	Method
9	Water Analysis Grp 3
10	Water Analysis Grp 3
11	Water Analysis Grp 3
12	Water Analysis Grp 2



Client: MR STILIAN
 (Klient: PROFURO INTERNATIONAL LTD
 MAPUTO
 MOZAMBIQUE

Tel: 092581 780189 / 71061
 Fax / Faks: 092581 780158
 Date / Datum: 2004/03/23

RESULTS FOR REPORT No: WATER 200304 3731 PART 2
 RESULTATE VIR VERSLAG Nr

T	LabNo	SENDER_Nr	1	2	3	4	5	6	7	8
			Cu	Mn	Cr	Fe	Al	HCO3	CO3	EC
			µg/l	µg/l	µg/l	mg/l	mg/l	mg/l	mg/l	mS/m
W	3927	WELL 1	#Error	0.001	1.032	0.332	0	1010	0	365
W	3928	WELL 2	#Error	0.001	0.001	0.280	0	459	0	347

METHODS USED FOR ANALYSIS:

Serial	Method	Serial	Method
1	Water Analysis Grp 2	5	Water Analysis Grp 2
2	Water Analysis Grp 2	6	Selected Water Analysis Grp1
3	Water Analysis Grp 2	7	Selected Water Analysis Grp1
4	Water Analysis Grp 2	8	FC

7. Table for Study Items on the Requested Equipment

Table for Study Items on the Requested Equipment

Annex 1

Minatures Item No.	Name of requested item of equipment	use	Necessity	Technical level	Maintenance system	Minimimum cost	Overall evaluation	Outline of examination	Project Item No.	Project Description	Planned quantity
L1-01	Furniture School desks	△	○	○	○	○	○	Desks for a total of 9 classes (full quota of one class: 30 students). Dormitory desks are also to be procured.	L1-01	FURNITURE SCHOOL DESK	270
L1-02	Table, seminar room, reading room, etc.	△	○	○	○	○	○	The use of a dormitory desk is to be shared among a total of 4 boarders. The seminar room is to be excluded from the project. Tables for the reading rooms and the auditorium are to be procured.	L1-02 L1-03	DORMITORY DESK TABLE, READING ROOM	50 12
L1-03	Desk for instructor	○	○	○	○	○	○	Desk for instructor, general	L1-30	TABLE, LIBRARY	5
L1-04	Desk for officer	○	○	○	○	○	○	Name is to be changed to "desk for curriculum advisor."	L1-04	TABLE, AUDITORIUM	25
L1-05	Desk for secretary	○	○	○	○	○	○	Name is to be changed to "desk for office work."	L1-05	DESK, TUTOR	40
L1-06	Conference table	○	○	○	○	○	○	Conference table for use in small-scale instructor meetings.	L1-07	DESK, SCHOOL ADVISOR	3
L1-07	Conference table, multi-purpose	○	○	○	○	○	○	Conference table for use in plenary/instructor meetings.	L1-08	DESK, GENERAL ADMINISTRATION	10
L1-08	Chair, seminar room, reading room, etc.	△	○	○	○	○	○	The necessary number of chairs are to be included in the project with name change.	L1-09	CONFERENCE TABLE (MULTI PURPOSE)	12
									L1-10	CHAIRS, READING ROOM	32
									L1-11	CHAIRS, STUDENT, CLASSROOM	270
									L1-12	CHAIRS, SCHOOL ADVISOR	3
									L1-13	CHAIRS, TUTOR	40
									L1-14	CHAIRS, GENERAL ADMINISTRATION	13
									L1-15	CHAIRS, DORMITORY	200
L1-09	Chairs, with armrest, auditorium	○	○	○	○	○	○	Name is to be changed to collapsible chairs.	L1-16	CHAIRS, CONFERENCE	32
L1-10	Computer table	○	○	○	○	○	○	The use of a computer table for education is to be shared between two students.	L1-17	CHAIRS, AUDITORIUM	310
L1-11	Computer chair	○	○	○	○	○	○	Computer table for instructor is to be procured.	L1-18	COMPUTER TABLE	16
L1-12	Mobile workstation for computer	○	○	○	○	○	○	Lab table is also to be included in the equipment plan.	L1-19	COMPUTER CHAIR	35
L1-13	Table for refectory	○	○	○	○	○	○		L1-20	MOBILE WORK STATION FOR COMPUTER	5
L1-14	Chair for refectory	○	○	○	○	○	○		L1-21	TABLE, REFECTORY	24
L1-15	Lab stool for use in seminar	△	○	○	○	○	○		L1-22	CHAIRS, REFECTORY	144
									L1-23	LAB STOOL	30
									L1-24	LAB TABLE	3
L1-16	Single bed	△	○	○	○	○	○	Name is to be changed to bunk bed for dormitory room.	L1-31	LAB TABLE, EQUIPMENT	5
L1-17	Bedside table	×	×	○	○	○	×	To be excluded from the project because this item is low in priority.	L1-25	BUNK-BED	100
L1-18	Cupboard for dormitory room	×	×	○	○	○	×	To be excluded from the project because this item is low in priority.			
L1-19	Cupboard for office work	×	×	○	○	○	×	To be excluded from the project because this item is low in priority.			
L1-20	Bookcase	○	○	○	○	○	○				
L1-21	Metal shelves for library	○	○	○	○	○	○		L1-26	BOOKCASE	27
L1-22	Metal shelves for office	△	○	○	○	○	○	Cabinet for string supplies is also to be included in the project.	L1-27	METAL SHELVES FOR LIBRARY	34
									L1-28	METAL SHELVES FOR GENERAL PURPOSE	72
L1-23	Shelves for laundry	○	×	○	○	○	○	To be excluded from the project because this item is low in priority.	L1-29	METAL CABINET FOR GENERAL PURPOSE	26
L1-24	Cupboard/shelves for kitchen	△	○	○	○	○	×	Procurement of kitchen appliances is to be considered in the equipment plan.		CUPBOARD/SHELVES FOR LAUNRY	
	Audiovisual equipment									AUDIO VISUAL EQUIPMENT	
L2-01	OHP	○	○	○	○	○	○		L2-01	OVERHEAD PROJECTORS	2
L2-02	Slide projectors	○	○	○	○	○	○		L2-02	SLIDE PROJECTORS	2

Table for Study Items on the Requested Equipment

Annex 1

Mifudes Item No.	Name of requested item of equipment	use	Necessity	Technical level	Maintenance system	Overall evaluation	Outline of examination	Project Item No.	Project Description	Planned quantity
L2-03	Monitor, video projector for large screen	○	○	○	○	○	To be procured for auditorium.	L2-03	MONITOR, VIDEO PLAYER, DATA PROJECTOR	1
L2-04	Screen for use in seminar	○	×	○	○	×	To be deleted since seminar room is not to be included in the project.			
L2-05	Screen for auditorium	○	○	○	○	○		L2-04	WALL SCREEN, AUDITORIUM	1
L2-06	Portable screen	○	○	○	○	○		L2-05	SCREEN, PORTABLE	4
L2-07	Spare electric bulb for OHP	×	○	○	○	×	Expendables excepting those which are to be used as teaching materials are not to be included in the project.			
L2-08	Spare electric bulb for slide projector	×	○	○	○	×	Expendables excepting those which are to be used as teaching materials are not to be included in the project.			
L2-09	Data show	×	○	○	○	×	Expendables excepting those which are to be used as teaching materials are not to be included in the project.			
L2-10	Trolley for projector	○	○	○	○	○	Included in a separate item.			
L2-11	Microphone for table	△	○	○	○	○	To be included in the equipment plan as audio set for auditorium.	L2-06	AUDIO SET, AUDITORIUM	1
L2-12	Microphone for alcove	△	○	○	○	×	To be included in the equipment plan as audio set for auditorium.			
L2-13	Wireless microphone	△	○	○	○	×	To be included in the equipment plan as audio set for auditorium.			
L2-14	Portable camera with accessories	×	×	○	○	×	Not indispensable for teaching. Other institutes of health science have no such camera.			
L2-15	Language laboratory equipment (for 36 persons)	×	×	○	○	×	To be deleted because this item is not included in curriculum.			
L2-16	Radio broadcast recorder	×	×	○	○	×	To be deleted because this item is not indispensable for teaching.			
L2-18	Laser pointer	△	○	○	○	×	To be procured as component part for OHP, slide projector and data projector.			
L2-19	Whiteboard	○	×	○	○	×	To be deleted because other items may be substituted for it.			
L2-20	Magnetic whiteboard	△	○	○	○	○	教室の黒板も機材として計画する。	L2-07	DRY-WIPE MAGNETIC WHITEBOARD	4
L2-08	Blackboard							L2-08	BLACKBOARD	11
L2-08	Laboratory equipment								LABORATORY EQUIPMENT	
L3-01	First-aid kit for laboratory	×	○	○	○	×	To be deleted because this item is not intended for use in teaching.			
L3-02	Microscope, binocular (for use in training)	○	○	○	○	○	To be deleted because this item falls under the category of expendables and because this item is judged to be low in priority.	L3-01	BINOCULAR EDUCATIONAL MICROSCOPE	30
L3-04	Water quality analysis kit	○	×	○	○	×				
L3-05	Autoclave	○	○	○	○	○	Two types, simple type and laboratory type, of autoclave are to be procured.	L3-02	AUTOClave, PORTABLE	2
L3-06	Analytical balance	○	○	○	○	○		L3-03	AUTOClave, LABORATORY	2
L3-07	Centrifuge	○	○	○	○	○		L3-04	ANALYTICAL BALANCE	2
L3-08	High temperature furnace	×	×	○	○	×	To be deleted because this is an item of equipment outside the curriculum for medical education.	L3-05	CENTRIFUGE	2
L3-09	Hot air oven	○	○	○	○	○		L3-06	HOT AIR OVEN	2
L3-10	Refrigerator/freezer	△	○	○	○	○	Refrigerator and freezer are to be procured separately.	L3-07	REFRIGERATOR	1
L3-11	pH meter	○	○	○	○	○		L3-08	FRIDGE	1
L3-12	Stopwatch	○	○	○	○	○		L3-09	pH METER	2
L3-13	Micropept	○	○	○	○	○		L3-10	STOPWATCH FOR LABS	2
L3-14	Incubator	○	○	○	○	○		L3-11	DISPENSING EQUIPMENT (SET)	4
L3-15	Flask set for use in culture	△	○	○	○	×	Gadgets are to be included in laboratory glassware set.	L3-12	INCUBATOR	2
L3-16	Flask set for boiling	△	○	○	○	×	Gadgets are to be included in laboratory glassware set.			
L3-17	Evaporator	×	×	○	○	×	To be deleted because this is an item of equipment outside the curriculum for medical education.			
L3-18	Extractor, suction unit?	×	×	○	○	×	To be deleted because this is an item of equipment outside the curriculum for medical education.			
L3-19	Water still	○	○	○	○	○		L3-13	WATER STILL	1

Table for Study Items on the Requested Equipment

Annex I

Minibus Item No.	Name of requested item of equipment	use	Necessity	Technical level	Maintenance necessary	Maintenance costs	Overall evaluation	Outline of examination	Project Item No.	Project Description	Planned quantity
L3-20	Ion exchanger	○	×	○	○	×	×	To be deleted because this item requires high maintenance costs and is low in priority.			
L3-21	Flask set for evaporation	△	○	○	○	○	×	Gadgets are to be included in laboratory glassware set.			
L3-22	Laboratory glassware set	○	○	○	○	○	○	Gadgets are to be included in laboratory glassware set.			
L3-23	Test tube forceps	△	○	○	○	○	×	Gadgets are to be included in laboratory glassware set.	L3-14	GLASSWARE LAB. SET	2
L3-24	Thermometer for laboratory use	△	○	○	○	○	×	Gadgets are to be included in laboratory glassware set.			
L3-25	Tray set for laboratory use	○	×	○	○	○	○	To be deleted because this item is low in priority.			
L3-26	Funnel set	○	○	○	○	○	○	Plastic funnel set is to be procured.	L3-15	FUNNEL SET	4
L3-27	Cooler set	×	×	○	○	○	×	To be deleted because this item is low in priority.			
L3-28	Colorimeter	○	○	○	○	○	○		L3-16	COLORIMETER	2
L3-29	Test tube set	△	○	○	○	○	×	Gadgets are to be included in laboratory glassware set.			
L3-30	Photometer	○	×	○	○	○	×	To be deleted because this item is not necessary if the colorimeter is included in the project.			
L3-31	Test tube stand	△	○	○	○	○	×	Gadgets are to be included in laboratory glassware set.			
L3-32	Bath tank	○	○	○	○	○	○		L3-17	BATH TANK	2
L3-33	Buret set	△	○	○	○	○	×	Gadgets are to be included in laboratory glassware set.			
L3-34	EDTA bottle	△	○	○	○	○	×	Gadgets are to be included in laboratory glassware set.			
L3-35	Beaker	△	○	○	○	○	×	Gadgets are to be included in laboratory glassware set.			
L3-36	Preservative table	○	×	○	○	○	×	To be deleted because this item is low in priority.			
L3-37	Culture dish	△	○	○	○	○	×	Gadgets are to be included in laboratory glassware set.			
L3-38	Shaker	○	○	○	○	○	○		L3-18	SHAKERS	2
L3-39	Homogenizer	○	×	○	○	○	×	To be deleted because this is an item of equipment outside the curriculum for medical education.			
L3-40	Mixer	○	○	○	○	○	○		L3-19	MIXER	2
L3-41	Centrifuge, haematocrit	○	○	○	○	○	○		L3-20	CENTRIFUGE, HAEMATOCRIT	2
L3-42	Skull crucible set	○	×	○	○	○	×	To be deleted because this is an item of equipment outside the curriculum for medical education.			
L3-43	Mortar with pestle set	○	○	○	○	○	○		L3-21	MORTAR WITH PESTLE SET	4
L3-44	Slide for microscope (100 sets)	△	○	○	○	○	×	Gadgets are to be included in laboratory glassware set.			
L3-45	Cuvet	△	○	○	○	○	×	To be procured as accessory to colorimeter.			
L4-01	Anatomical models and charts	○	○	○	○	○	○			ANATOMICAL MODELS AND CHARTS	
L4-02	Human skeleton replica, female	○	○	○	○	○	○	This item, which is a basic item, is to be procured in sufficient quantities for a total of 9 courses.	L4-01	HUMAN SKELETON REPLICAS AND CHARTS	1
L4-03	Human skeleton replica, male	○	○	○	○	○	○	Same as above.	L4-02	HUMAN SKELETON REPLICAS MALE	1
L4-04	Skeleton with muscles	○	○	○	○	○	○	Same as above.	L4-03	SKELETON WITH MUSCLES ATT	1
L4-05	Skeleton with flexible spoolum	○	○	○	○	○	○	Same as above.	L4-04	SKELETON WITH FLEXIBLE SPCOLUMN	1
L4-06	Educational torso	○	○	○	○	○	○	Same as above.	L4-05	EDUCATIONAL TEACHING TORSO	2
L4-07	Adult skull	○	○	○	○	○	○	Same as above.	L4-06	ADULT SKULL	1
L4-08	Child skull	○	○	○	○	○	○	Same as above.	L4-07	CHILD SKULL	1
L4-09	Fetal skull	○	○	○	○	○	○	Same as above.	L4-08	FETAL SKULL	1
L4-10	Pediatric injection simulator, head	○	○	○	○	○	○	Same as above.	L4-09	PEDIATRIC INJECTION HEAD	2
L4-11	Injection simulator, arm	○	○	○	○	○	○	Same as above.	L4-10	INJECTION TRAINING ARM	2
L4-12	Injection simulator, leg	○	○	○	○	○	○	Same as above.	L4-11	IM INJECTION LEG SIMULATOR	2
L4-13	Intubation baby doll	○	○	○	○	○	○	Same as above.	L4-12	INTUBATION BABY DOLL	2
L4-14	Obstetric phantom	○	○	○	○	○	○	Same as above.	L4-13	OBSTETRIC PHANTOM	2
L4-15	Female doll (manikin)	○	○	○	○	○	○	Same as above.	L4-14	FEMALE DOLL (MANEKIN)	2
L4-15	Male doll (manikin)	○	○	○	○	○	○	Same as above.	L4-15	MALE DOLL (MANEKIN)	2

Table for Study Items on the Requested Equipment

Annex I

Minibus Item No.	Name of requested item of equipment	use	Necessity	Technical level	Maintenance necessary	Maintenance rec. costs	Overall evaluation	Outline of examination	Project Item No.	Project Description	Planned quantity
L4-16	Suture practice arm	○	○	○	○	○	○	Same as above.	L4-16	SUTURE PRACTICE ARM	2
L4-17	Tracheotomy care simulator	○	○	○	○	○	○	Same as above.	L4-17	TRACHEOSTOMY CARE SIMULATOR	2
L4-18	Spinal injection simulator	○	○	○	○	○	○	Same as above.	L4-18	SPINAL INJECTION SIMULATOR	2
L4-19	Anatomical model, heart	○	○	○	○	○	○	Same as above.	L4-19	HEART	2
L4-20	Anatomical model, respiratory organ & heart	○	○	○	○	○	○	Same as above.	L4-20	RESPIRATORY ORGAN & HEART	2
L4-21	Anatomical model, urinary system	○	○	○	○	○	○	Same as above.	L4-21	URINARY SYSTEM	2
L4-22	Anatomical model, kidney, nephron & glomerulus	○	○	○	○	○	○	Same as above.	L4-22	KIDNEY, NEPHRON & GLOMERULUS	2
L4-23	Anatomical model, nose & olfactory apparatus set	○	○	○	○	○	○	Same as above.	L4-23	NOSE & OLPHATORY APPARATUS SET	2
L4-24	Anatomical model, digestive system	○	○	○	○	○	○	Same as above.	L4-24	DIGESTIVE SYSTEM	2
L4-25	Pregnancy series	○	○	○	○	○	○	Same as above.	L4-25	PREGNANCY SERIES	2
L4-26	Skin model	○	○	○	○	○	○	Same as above.	L4-26	SKIN MODEL	2
L4-27	Anatomical wall charts	○	○	○	○	○	○	Same as above.	L4-27	ANATOMICAL CHARTS (SET)	2
L5-01	Medical equipment and instruments									MEDICAL INSTRUMENTS & EQUIPMENT	
L5-02	Stethoscope	○	○	○	○	○	○		L5-01	STETHOSCOPE BINAURAL	30
L5-03	Stethoscope (fetal/pinard)	○	○	○	○	○	○		L5-02	STETHOSCOPE MONAURAL (FETAL/PINARD)	30
L5-04	Sphygmomanometer, aneroid	○	○	○	○	○	○		L5-03	SPHYGMOMANOMETER-ANEROID	10
L5-05	血压计、水银	○	○	○	○	○	○		L5-04	SPHYGMOMANOMETER-MERCURIAL	10
L5-06	Weighting scale, adult	○	○	○	○	○	○	The existing item can be used in the new facility.	L5-05	WEIGHING SCALE, BABY	1
L5-07	Weighting scale, child	○	○	○	○	○	○		L5-06	EXAMINATION COUCH	2
L5-08	Examination couch	○	○	○	○	○	○		L5-07	HOSPITAL BED	3
L5-09	Hospital bed	○	○	○	○	○	○		L5-08	DRESSING CARRIAGE	1
L5-10	Dressing carriage	○	○	○	○	○	○		L5-09	INSTRUMENT TABLE	1
L5-11	Instrument table	○	○	○	○	○	○		L5-10	HAND STAND SUPPORT	1
L5-12	Hand stand support	○	○	○	○	○	○	Cleaning cart is not familiar to hospitals in the country. In addition, the existing institutes of health science is provided with no cleaning cart.			
L5-13	Cleaning cart	○	○	○	○	○	○		L5-11	DOUBLE BASIN STAND	1
L5-14	Double basin stand	○	○	○	○	○	○		L5-12	INSTRUMENT/DRESSING TABLE	1
L5-15	Instrument/dressing table	○	○	○	○	○	○		L5-13	CATHETER TRAY	1
L5-16	Catheter tray	○	○	○	○	○	○		L5-14	FORCEPS STAND	6
L5-17	Forceps stand	○	○	○	○	○	○		L5-15	DRESSING JAR	6
L5-18	Dressing jar	○	○	○	○	○	○		L5-16	DRESSING SET	6
L5-19	Hygienic forceps set	○	○	○	○	○	○	Details of set are to be examined for name change.	L5-17	SURGICAL SUTURE NEEDLE SET	6
L5-20	Surgical suture needle set	○	○	○	○	○	○	This item falls under the category of expendables, but it is necessary for medical education, sets of various sizes are to be procured.	L5-18	SUTURE SET	6
L5-21	外科器具セット	△	○	○	○	○	○	Details of set are to be examined for name change.	L5-19	SURGICAL INSTRUMENT SET	6
L5-22	Surgical set	△	○	○	○	○	○	Details of set are to be examined for name change.	L5-20	DELIVERY INSTRUMENT SET	6
L5-23	Razor set	△	○	○	○	○	○	Details of set are to be examined for name change.	L5-21	RESUSCITATOR FOR BOTH NEONATAL & ADULT	1
L5-24	Resuscitator for both neonatal & adult	○	○	○	○	○	○	Details of set are to be examined for name change.	L5-22	BREAST PUMP	2
L5-25	Breast pump	○	○	○	○	○	○		L5-23	VAGINAL SPECULUM	6
L5-26	Vaginal speculum	○	○	○	○	○	○	To be included in expendables for education.	L5-24	EDUCATIONAL MATERIALS & CONSUMABLES	6
L5-27	Surgical gloves (12 pairs)	△	○	○	○	○	○	Necessary for training in measurement of patient's bleeding during operation.	L5-25	VOLUMETRIC FLASKS	6
L5-28	Volumetric flasks	△	○	○	○	○	○	To be included in expendables for education.			
L5-29	Infusion set	△	○	○	○	○	○	To be included in expendables for education.			
L5-30	Infusion bottle	△	○	○	○	○	○	To be included in expendables for education.			
L5-31	Clippers for surgeon	○	○	○	○	○	○	To be deleted because this item is low in priority.			
L5-32	Surgeon hand brush	○	○	○	○	○	○		L5-26	SURGEON HAND BRUSH	6

Table for Study Items on the Requested Equipment

Annex 1

Minibus Item No.	Name of requested item of equipment	use	Necessity	Technical level	Maintenance necessary	Maintenance cost	Overall evaluation	Outline of examination	Product Item No.	Project Description	Planned quantity
L5-32	Expansion bandage	○	○	○	○	○	○	To be included in expendables for education.			
L5-33	Nasal feeding tube	○	○	○	○	○	○	To be included in expendables for education.			
L5-34	耳鏡セット	○	○	○	○	○	○		L5-27	OTOSCOPE SET	2
L5-35	鼻鏡セット	○	○	○	○	○	○		L5-28	RINOSCOPE SET	2
L5-36	Removable suture set	○	○	○	○	○	○		L5-29	REMOVABLE-SUTURE SET	6
L5-37	Civet	×	×	○	○	○	×	To be deleted because for what purpose this item is to be used in nursing training.			
L5-38	Airway set	○	○	○	○	○	○		L5-30	AIRWAY SET	2
L5-39	Ambu-bag set	○	○	○	○	○	○		L5-31	AMBU-BAG SET	2
L5-40	Intubation tube set	△	○	○	○	○	○	To be included in expendables for education.			
L5-41	Vapor sterilizer, portable	△	○	○	○	○	○	Boiling sterilizer is to be procured instead of vapor sterilizer.	L5-32	BOILING STERILIZER	1
L5-42	Percussion hammer	○	○	○	○	○	○		L5-33	PERCUSSION HAMMER	6
L5-43	Spirometer	○	○	○	○	○	○		L5-34	SPIROTEST	2
L5-44	Goniometer set	○	○	○	○	○	○		L5-35	GONIOMETER SET	2
L5-45	Suction unit, foot pedal, manual	○	○	○	○	○	○		L5-36	SUCTION UNIT, MANUAL, FOOT PEDAL	2
L5-46	Urethra catheter set	△	○	○	○	○	○	To be included in expendables for education.			
	Office equipment and supplies										
L6-01	Photocopy machine, multifunctional	○	○	○	○	○	○	To be included in expendables for education with name change.	L6-01	OFFICE MACHINE AND EQUIPMENT	
L6-02	Toner for multifunctional photocopy machine	×	○	○	○	○	○	Office expendables are not to be included in the project.	L6-01	PHOTOCOPY MACHINE WITH SORTER	1
L6-03	Photocopy machine, general	○	○	○	○	○	○	To be included in expendables for education with name change.	L6-02	PHOTOCOPY MACHINE, GENERAL	2
L6-04	Tone for general photocopy machine	×	○	○	○	○	○	Office expendables are not to be included in the project.			
L6-05	Facsimile	×	×	○	○	○	○	To be deleted because this item is low in priority.			
L6-06	Toner for facsimile	×	○	○	○	○	○	Office expendables are not to be included in the project.			
L6-07	Desktop computer (for training)	○	○	○	○	○	○	This use of one unit is to be shared between 2 students.	L6-03	DESK TOP COMPUTER (FOR TRAINING)	16
L6-08	Voltage stabilizer (for computer for training)	△	○	○	○	○	○	This item is to be procured as component part of computer.			
L6-09	Printer (for computer for training)	○	○	○	○	○	○	The minimum number of units are to be procured.	L6-04	PRINTER (FOR TRAINING)	1
L6-10	Toner (for printer for computer for training)	×	○	○	○	○	○	Office expendables are not to be included in the project.			
L6-11	Desktop computer (for office work)	○	○	○	○	○	○	The existing desktop computers are to be used and additional units are to be procured.	L6-05	DESK TOP COMPUTER (FOR OFFICE USE)	5
L6-12	Voltage stabilizer (for computer for office work)	△	○	○	○	○	○	Office expendables are not to be included in the project.			
L6-13	Printer (for computer for office work)	○	○	○	○	○	○		L6-06	PRINTER (FOR OFFICE USE)	5
L6-14	Toner (for printer for computer for office work)	×	○	○	○	○	○	Office expendables are not to be included in the project.			
L6-16	Voice recognition unit	×	×	○	○	○	○	To be deleted because for what purpose this unit is to be used is unknown.			
L6-17	Electronic calculator with printer	×	○	○	○	○	○	Cheap office supplies are not to be included in the project.			
L6-18	Electronic calculator, portable	×	○	○	○	○	○	To be excluded from the project because this item is so cheap.			
L6-19	Scientific electronic calculator	×	○	○	○	○	○	To be excluded from the project because this item is so cheap.			
	Kitchen appliances										
L7-01	Electric cutter (for industrial use)	△	○	○	○	○	○	Kitchen appliances are to be considered in the equipment plan			
L7-02	Simmering water pot	△	○	○	○	○	○	Kitchen appliances are to be considered in the equipment plan			
L7-03	Serving table	△	○	○	○	○	○	Kitchen appliances are to be considered in the equipment plan			
L7-04	Flyer	△	○	○	○	○	○	Kitchen appliances are to be considered in the equipment plan			
L7-05	Convection oven (for industrial use)	△	○	○	○	○	○	Kitchen appliances are to be considered in the equipment plan			
L7-31	Refrigerator (500 liters)	△	○	○	○	○	○	Kitchen appliances are to be considered in the equipment plan			
L7-32	Refrigerator (700 liters)	△	○	○	○	○	○	Kitchen appliances are to be considered in the equipment plan.			
L7-33	Refrigerator (270 liters)	△	○	○	○	○	○	Kitchen appliances are to be considered in the equipment plan.			

Table for Study Items on the Requested Equipment

Annex 1

Attache Item No.	Name of requested item of equipment	use	Necessity	Technical level	Maintenance necessity	Minimum new costs	Overall evaluation	Outline of examination	Project Item No.	Project Description	Planned quantity
L7-34	Drinking fountain, stainless steel (20 liters)	X	X	O	O	O	X	To be deleted because this item is low in priority.			
	Laundry and cleaning equipment										
L8-01	Washing machine (for industrial use)	X	O	O	O	O	X	To be deleted because this item is low in priority.			
L8-02	Steam iron with accessories	X	O	O	O	O	X	To be deleted because this item is low in priority.			
L8-03	Vacuum cleaner, multipurpose	X	O	O	O	O	X	To be deleted because this item is low in priority.			
L8-04	Vacuum cleaner filter	X	O	O	O	O	X	To be deleted because this item is low in priority.			
	Vehicles									VEHICLES	
L11-1	Bus (large-size)	O	O	O	O	O	O	Name is to be changed.	L11-01	BUS, MIDDLE SIZE	1
L11-2	Bus (small-size)	O	O	O	O	O	O	Name is to be changed.	L11-02	BUS, SMALL SIZE	1
L11-3	Pickup truck	△	O	O	O	O	X	Buses may be used in substitution of this item.			

8. Table for Equipment Arrangement

8. Table for Equipment Arrangement

Bldg.	Room	Equipment No.	Description	Q'ty
Administration Bldg.	Principal's office			-
Administration Bldg.	Small conference room	L1-08	CONFERENCE TABLE	1
Administration Bldg.	Small conference room	L1-16	CHAIRS, CONFERENCE	8
Administration Bldg.	Small conference room	L1-26	BOOKCASE	1
Administration Bldg.	Small conference room	L2-07	DRY-WIPE MAGNETIC WHITEBOARD	1
Administration Bldg.	Storage 1	L1-28	METAL SHELVES FOR GENERAL PUROPOSE	8
Administration Bldg.	Printing room	L6-01	PHOTOCOPY MACHINE WITH SORTER	1
Administration Bldg.	Printing room	L6-02	PHOTOCOPY MACHINE, GENERAL	1
Administration Bldg.	Printing room	L1-28	METAL SHELVES FOR GENERAL PUROPOSE	1
Administration Bldg.	Printing room	L1-07	DESK, GENERAL ADMINISTRATION	1
Administration Bldg.	Printing room	L1-14	CHAIRS, GENERAL ADMINISTRATION	1
Administration Bldg.	Office	L1-07	DESK, GENERAL ADMINISTRATION	4
Administration Bldg.	Office	L1-14	CHAIRS, GENERAL ADMINISTRATION	4
Administration Bldg.	Office	L1-20	MOBILE WORK STATION FOR COMPUTER	1
Administration Bldg.	Office	L6-05	DESK TOP COMPUTER (FOR OFFICE USE)	1
Administration Bldg.	Office	L6-06	PRINTER (FOR OFFICE USE)	1
Administration Bldg.	Office	L1-19	COMPUTER CHAIR	1
Administration Bldg.	Office	L1-26	BOOKCASE	2
Administration Bldg.	Office	L1-29	METAL CABINET FOR GENERAL PURPOSE	2
Administration Bldg.	Accounting room	L1-07	DESK, GENERAL ADMINISTRATION	2
Administration Bldg.	Accounting room	L1-14	CHAIRS, GENERAL ADMINISTRATION	2
Administration Bldg.	Accounting room	L1-26	BOOKCASE	1
Administration Bldg.	Accounting room	L1-29	METAL CABINET FOR GENERAL PURPOSE	2
Instructors Bldg. No. 1	Advisor's office 1	L1-06	DESK, SCHOOL ADVISOR	1
Instructors Bldg. No. 1	Advisor's office 1	L1-12	CHAIRS, SCHOOL ADVISOR	1
Instructors Bldg. No. 1	Advisor's office 1	L1-26	BOOKCASE	2
Instructors Bldg. No. 1	Advisor's office 1	L1-29	METAL CABINET FOR GENERAL PURPOSE	1
Instructors Bldg. No. 1	Advisor's office 2	L1-06	DESK, SCHOOL ADVISOR	1
Instructors Bldg. No. 1	Advisor's office 2	L1-12	CHAIRS, SCHOOL ADVISOR	1
Instructors Bldg. No. 1	Advisor's office 2	L1-26	BOOKCASE	2
Instructors Bldg. No. 1	Advisor's office 2	L1-29	METAL CABINET FOR GENERAL PURPOSE	1
Instructors Bldg. No. 1	Advisor's office 3	L1-06	DESK, SCHOOL ADVISOR	1
Instructors Bldg. No. 1	Advisor's office 3	L1-12	CHAIRS, SCHOOL ADVISOR	1
Instructors Bldg. No. 1	Advisor's office 3	L1-26	BOOKCASE	2
Instructors Bldg. No. 1	Advisor's office 3	L1-29	METAL CABINET FOR GENERAL PURPOSE	1
Instructors Bldg. No. 1	Small conference room	L1-09	CONFERENCE TABLE (MULTI PURPOSE)	4
Instructors Bldg. No. 1	Small conference room	L1-16	CHAIRS, CONFERENCE	8
Instructors Bldg. No. 1	Small conference room	L1-26	BOOKCASE	1
Instructors Bldg. No. 1	Small conference room	L2-07	DRY-WIPE MAGNETIC WHITEBOARD	1
Instructors Bldg. No. 1	Storage 2	L1-28	METAL SHELVES FOR GENERAL PUROPOSE	8
Instructors Bldg. No. 2	Instructors section/General medical nursing room	L1-05	DESK, TUTOR	4
Instructors Bldg. No. 2	Instructors section/General medical nursing room	L1-13	CHAIRS, TUTOR	4
Instructors Bldg. No. 2	Instructors section/General medical nursing room	L1-19	COMPUTER CHAIR	1
Instructors Bldg. No. 2	Instructors section/General medical nursing room	L1-20	MOBILE WORK STATION FOR COMPUTER	1
Instructors Bldg. No. 2	Instructors section/General medical nursing room	L1-26	BOOKCASE	2
Instructors Bldg. No. 2	Instructors section/General medical nursing room	L1-28	METAL SHELVES FOR GENERAL PUROPOSE	1
Instructors Bldg. No. 2	Instructors section/General medical nursing room	L1-29	METAL CABINET FOR GENERAL PURPOSE	1
Instructors Bldg. No. 2	Instructors section/General medical nursing room	L6-05	DESK TOP COMPUTER (FOR OFFICE USE)	1
Instructors Bldg. No. 2	Instructors section/General medical nursing room	L6-06	PRINTER (FOR OFFICE USE)	1
Instructors Bldg. No. 2	Professors' room	L1-05	DESK, TUTOR	3
Instructors Bldg. No. 2	Professors' room	L1-13	CHAIRS, TUTOR	3
Instructors Bldg. No. 2	Professors' room	L1-26	BOOKCASE	2
Instructors Bldg. No. 2	Professors' room	L1-28	METAL SHELVES FOR GENERAL PUROPOSE	1
Instructors Bldg. No. 2	Professors' room	L1-29	METAL CABINET FOR GENERAL PURPOSE	1
Instructors Bldg. No. 2	Conference room	L1-09	CONFERENCE TABLE (MULTI PURPOSE)	8
Instructors Bldg. No. 2	Conference room	L1-16	CHAIRS, CONFERENCE	16
Instructors Bldg. No. 2	Conference room	L1-26	BOOKCASE	1
Instructors Bldg. No. 2	Conference room	L2-07	DRY-WIPE MAGNETIC WHITEBOARD	1
Instructors Bldg. No. 2	Storage 3	L1-28	METAL SHELVES FOR GENERAL PUROPOSE	8
Instructors Bldg. No. 2	Storage 3	L2-01	OVERHEAD PROJECTORS	1
Instructors Bldg. No. 2	Storage 3	L2-02	SLIDE PROJECTORS	1

8. Table for Equipment Arrangement

Bldg.	Room	Equipment No.	Description	Qty
Instructors Bldg. No. 2	Storage 3	L2-05	SCREEN, PORTABLE	2
Instructors Bldg. No. 3	General medical technician course instructors' room	L1-05	DESK, TUTOR	6
Instructors Bldg. No. 3	General medical technician course instructors' room	L1-13	CHAIRS, TUTOR	6
Instructors Bldg. No. 3	General medical technician course instructors' room	L1-26	BOOKCASE	3
Instructors Bldg. No. 3	General medical technician course instructors' room	L1-28	METAL SHELVES FOR GENERAL PUROPOSE	1
Instructors Bldg. No. 3	General medical technician course instructors' room	L1-29	METAL CABINET FOR GENERAL PURPOSE	1
Instructors Bldg. No. 3	Mother Child health nursing course instructors' room	L1-05	DESK, TUTOR	6
Instructors Bldg. No. 3	Mother Child health nursing course instructors' room	L1-13	CHAIRS, TUTOR	6
Instructors Bldg. No. 3	Mother Child health nursing course instructors' room	L1-19	COMPUTER CHAIR	1
Instructors Bldg. No. 3	Mother Child health nursing course instructors' room	L1-20	MOBILE WORK STATION FOR COMPUTER	1
Instructors Bldg. No. 3	Mother Child health nursing course instructors' room	L1-26	BOOKCASE	3
Instructors Bldg. No. 3	Mother Child health nursing course instructors' room	L1-28	METAL SHELVES FOR GENERAL PUROPOSE	1
Instructors Bldg. No. 3	Mother Child health nursing course instructors' room	L1-29	METAL CABINET FOR GENERAL PURPOSE	1
Instructors Bldg. No. 3	Mother Child health nursing course instructors' room	L6-05	DESK TOP COMPUTER (FOR OFFICE USE)	1
Instructors Bldg. No. 3	Mother Child health nursing course instructors' room	L6-06	PRINTER (FOR OFFICE USE)	1
Instructors Bldg. No. 3	Pharmacy technician course instructors' room	L1-05	DESK, TUTOR	5
Instructors Bldg. No. 3	Pharmacy technician course instructors' room	L1-13	CHAIRS, TUTOR	5
Instructors Bldg. No. 3	Pharmacy technician course instructors' room	L1-19	COMPUTER CHAIR	1
Instructors Bldg. No. 3	Pharmacy technician course instructors' room	L1-20	MOBILE WORK STATION FOR COMPUTER	1
Instructors Bldg. No. 3	Pharmacy technician course instructors' room	L1-26	BOOKCASE	3
Instructors Bldg. No. 3	Pharmacy technician course instructors' room	L1-28	METAL SHELVES FOR GENERAL PUROPOSE	1
Instructors Bldg. No. 3	Pharmacy technician course instructors' room	L1-29	METAL CABINET FOR GENERAL PURPOSE	1
Instructors Bldg. No. 3	Pharmacy technician course instructors' room	L6-05	DESK TOP COMPUTER (FOR OFFICE USE)	1
Instructors Bldg. No. 3	Pharmacy technician course instructors' room	L6-06	PRINTER (FOR OFFICE USE)	1
Instructors Bldg. No. 3	Laboratory technician course instructors' room	L1-05	DESK, TUTOR	4
Instructors Bldg. No. 3	Laboratory technician course instructors' room	L1-13	CHAIRS, TUTOR	4
Instructors Bldg. No. 3	Laboratory technician course instructors' room	L1-19	COMPUTER CHAIR	1
Instructors Bldg. No. 3	Laboratory technician course instructors' room	L1-20	MOBILE WORK STATION FOR COMPUTER	1
Instructors Bldg. No. 3	Laboratory technician course instructors' room	L1-26	BOOKCASE	2
Instructors Bldg. No. 3	Laboratory technician course instructors' room	L1-28	METAL SHELVES FOR GENERAL PUROPOSE	1
Instructors Bldg. No. 3	Laboratory technician course instructors' room	L1-29	METAL CABINET FOR GENERAL PURPOSE	1
Instructors Bldg. No. 3	Laboratory technician course instructors' room	L6-05	DESK TOP COMPUTER (FOR OFFICE USE)	1
Instructors Bldg. No. 3	Laboratory technician course instructors' room	L6-06	PRINTER (FOR OFFICE USE)	1
Instructors Bldg. No. 3	Storage 4	L1-28	METAL SHELVES FOR GENERAL PUROPOSE	8
Instructors Bldg. No. 3	Storage 4	L2-01	OVERHEAD PROJECTORS	1
Instructors Bldg. No. 3	Storage 4	L2-02	SLIDE PROJECTORS	1
Instructors Bldg. No. 3	Storage 4	L2-05	SCREEN, PORTABLE	2
Instructors Bldg. No. 3	Storage 4	L4-01	HUMAN SKELTON REPLICA FEMALE	1
Instructors Bldg. No. 3	Storage 4	L4-02	HUMAN SKELTON REPLICA MALE	1
Instructors Bldg. No. 3	Storage 4	L4-03	SKELTON WITH MUSCLES ATT	1
Instructors Bldg. No. 3	Storage 4	L4-04	SKELTON WITH FLEXIBLE SPCOLUMN	1

8. Table for Equipment Arrangement

Bldg.	Room	Equipment No.	Description	Q'ty
Instructors Bldg. No. 3	Storage 4	L4-05	EDUCATIONAL TEACHING TORSO	2
Instructors Bldg. No. 3	Storage 4	L4-06	ADULT SKULL	1
Instructors Bldg. No. 3	Storage 4	L4-07	CHILD SKULL	1
Instructors Bldg. No. 3	Storage 4	L4-08	FETAL SKULL	1
Instructors Bldg. No. 3	Storage 4	L4-19	HEART	2
Instructors Bldg. No. 3	Storage 4	L4-20	RESPIRATORY ORGAN & HEART	2
Instructors Bldg. No. 3	Storage 4	L4-21	URINARY SYSTEM	2
Instructors Bldg. No. 3	Storage 4	L4-22	KIDNEY, NEPHRON & GLOMERULUS	2
Instructors Bldg. No. 3	Storage 4	L4-23	NOSE & OLPHATORY APPARATUS SET	2
Instructors Bldg. No. 3	Storage 4	L4-24	DIGESTIVE SYSTEM	2
Instructors Bldg. No. 3	Storage 4	L4-25	PREGNANCY SERIES	2
Instructors Bldg. No. 3	Storage 4	L4-26	SKIN MODEL	2
Instructors Bldg. No. 3	Storage 4	L4-27	ANATOMICAL CHARTS (SET)	2
Classroom Bldg. No. 1	Classroom 1	L1-01	SCHOOL DESK	30
Classroom Bldg. No. 1	Classroom 1	L1-11	CHAIRS, STUTENT, CLASSROOM	30
Classroom Bldg. No. 1	Classroom 1	L1-05	DESK, TUTOR	1
Classroom Bldg. No. 1	Classroom 1	L1-13	CHAIRS, TUTOR	1
Classroom Bldg. No. 1	Classroom 1	L1-29	METAL CABINET FOR GENERAL PURPOSE	1
Classroom Bldg. No. 1	Classroom 1	L2-08	BLACKBOARD	1
Classroom Bldg. No. 1	Classroom 2	L1-01	SCHOOL DESK	30
Classroom Bldg. No. 1	Classroom 2	L1-11	CHAIRS, STUTENT, CLASSROOM	30
Classroom Bldg. No. 1	Classroom 2	L1-05	DESK, TUTOR	1
Classroom Bldg. No. 1	Classroom 2	L1-13	CHAIRS, TUTOR	1
Classroom Bldg. No. 1	Classroom 2	L1-29	METAL CABINET FOR GENERAL PURPOSE	1
Classroom Bldg. No. 1	Classroom 2	L2-08	BLACKBOARD	1
Classroom Bldg. No. 1	Classroom 3	L1-01	SCHOOL DESK	30
Classroom Bldg. No. 1	Classroom 3	L1-11	CHAIRS, STUTENT, CLASSROOM	30
Classroom Bldg. No. 1	Classroom 3	L1-05	DESK, TUTOR	1
Classroom Bldg. No. 1	Classroom 3	L1-13	CHAIRS, TUTOR	1
Classroom Bldg. No. 1	Classroom 3	L1-29	METAL CABINET FOR GENERAL PURPOSE	1
Classroom Bldg. No. 1	Classroom 3	L2-08	BLACKBOARD	1
Classroom Bldg. No. 2	Classroom 4	L1-01	SCHOOL DESK	30
Classroom Bldg. No. 2	Classroom 4	L1-11	CHAIRS, STUTENT, CLASSROOM	30
Classroom Bldg. No. 2	Classroom 4	L1-05	DESK, TUTOR	1
Classroom Bldg. No. 2	Classroom 4	L1-13	CHAIRS, TUTOR	1
Classroom Bldg. No. 2	Classroom 4	L1-29	METAL CABINET FOR GENERAL PURPOSE	1
Classroom Bldg. No. 2	Classroom 4	L2-08	BLACKBOARD	1
Classroom Bldg. No. 2	Classroom 5	L1-01	SCHOOL DESK	30
Classroom Bldg. No. 2	Classroom 5	L1-11	CHAIRS, STUTENT, CLASSROOM	30
Classroom Bldg. No. 2	Classroom 5	L1-05	DESK, TUTOR	1
Classroom Bldg. No. 2	Classroom 5	L1-13	CHAIRS, TUTOR	1
Classroom Bldg. No. 2	Classroom 5	L1-29	METAL CABINET FOR GENERAL PURPOSE	1
Classroom Bldg. No. 2	Classroom 5	L2-08	BLACKBOARD	1
Classroom Bldg. No. 2	Classroom 6	L1-01	SCHOOL DESK	30
Classroom Bldg. No. 2	Classroom 6	L1-11	CHAIRS, STUTENT, CLASSROOM	30
Classroom Bldg. No. 2	Classroom 6	L1-05	DESK, TUTOR	1
Classroom Bldg. No. 2	Classroom 6	L1-13	CHAIRS, TUTOR	1
Classroom Bldg. No. 2	Classroom 6	L1-29	METAL CABINET FOR GENERAL PURPOSE	1
Classroom Bldg. No. 2	Classroom 6	L2-08	BLACKBOARD	1
Classroom Bldg. No. 3	Classroom 7	L1-01	SCHOOL DESK	30
Classroom Bldg. No. 3	Classroom 7	L1-11	CHAIRS, STUTENT, CLASSROOM	30
Classroom Bldg. No. 3	Classroom 7	L1-05	DESK, TUTOR	1
Classroom Bldg. No. 3	Classroom 7	L1-13	CHAIRS, TUTOR	1
Classroom Bldg. No. 3	Classroom 7	L1-29	METAL CABINET FOR GENERAL PURPOSE	1
Classroom Bldg. No. 3	Classroom 7	L2-08	BLACKBOARD	1
Classroom Bldg. No. 3	Classroom 8	L1-01	SCHOOL DESK	30
Classroom Bldg. No. 3	Classroom 8	L1-11	CHAIRS, STUTENT, CLASSROOM	30
Classroom Bldg. No. 3	Classroom 8	L1-05	DESK, TUTOR	1
Classroom Bldg. No. 3	Classroom 8	L1-13	CHAIRS, TUTOR	1
Classroom Bldg. No. 3	Classroom 8	L1-29	METAL CABINET FOR GENERAL PURPOSE	1
Classroom Bldg. No. 3	Classroom 8	L2-08	BLACKBOARD	1
Classroom Bldg. No. 3	Classroom 9	L1-01	SCHOOL DESK	30
Classroom Bldg. No. 3	Classroom 9	L1-11	CHAIRS, STUTENT, CLASSROOM	30
Classroom Bldg. No. 3	Classroom 9	L1-05	DESK, TUTOR	1
Classroom Bldg. No. 3	Classroom 9	L1-13	CHAIRS, TUTOR	1
Classroom Bldg. No. 3	Classroom 9	L1-29	METAL CABINET FOR GENERAL PURPOSE	1
Classroom Bldg. No. 3	Classroom 9	L2-08	BLACKBOARD	1
Special classroom Bldg. No. 1	Training room	L1-05	DESK, TUTOR	1
Special classroom Bldg. No. 1	Training room	L1-13	CHAIRS, TUTOR	1

8. Table for Equipment Arrangement

Bldg.	Room	Equipment No.	Description	Q'ty
Special classroom Bldg. No. 1	Training room	L1-29	METAL CABINET FOR GENERAL PURPOSE	2
Special classroom Bldg. No. 1	Training room	L2-08	BLACKBOARD	1
Special classroom Bldg. No. 1	Training room	L4-13	OBSTETRIC PHANTOM	1
Special classroom Bldg. No. 1	Training room	L4-14	FEMALE DOLL (MANEKIN)	1
Special classroom Bldg. No. 1	Training room	L4-15	MALE DOLL (MANEKIN)	1
Special classroom Bldg. No. 1	Training room	L5-05	WEIGHING SCALE, BABY	1
Special classroom Bldg. No. 1	Training room	L5-06	EXAMINATION COUCH	2
Special classroom Bldg. No. 1	Training room	L5-07	HOSPITAL BED	3
Special classroom Bldg. No. 1	Training room	L5-08	DRESSING CARRIAGE	1
Special classroom Bldg. No. 1	Training room	L5-11	DOUBLE BASIN STAND	1
Special classroom Bldg. No. 1	Training room	L5-12	INSTRUMENT/DRESSING TABLE	1
Special classroom Bldg. No. 1	Equipment storage	L1-28	METAL SHELVES FOR GENERAL PUROPOSE	10
Special classroom Bldg. No. 1	Equipment storage	L4-09	PEDIATRIC INJECTION HEAD	2
Special classroom Bldg. No. 1	Equipment storage	L4-10	INJECTION TRAINING ARM	2
Special classroom Bldg. No. 1	Equipment storage	L4-11	IM INJECTION LEG SIMULATOR	2
Special classroom Bldg. No. 1	Equipment storage	L4-12	INTUBATION BABY DOLL	2
Special classroom Bldg. No. 1	Equipment storage	L4-16	SUTURE PRACTICE ARM	2
Special classroom Bldg. No. 1	Equipment storage	L4-17	TRACHEOSTOMY CARE SIMULATOR	2
Special classroom Bldg. No. 1	Equipment storage	L4-18	SPINAL INJECTION SIMULATOR	2
Special classroom Bldg. No. 1	Equipment storage	L5-01	STETHOSCOPE BINAURAL	30
Special classroom Bldg. No. 1	Equipment storage	L5-02	STETHOSCOPE MONOAUURAL (FETAL/PINARD)	30
Special classroom Bldg. No. 1	Equipment storage	L5-03	SPHYGMOMANOMETER-ANEROID	10
Special classroom Bldg. No. 1	Equipment storage	L5-04	SPHYGMOMANOMETER-MERCURIAL	10
Special classroom Bldg. No. 1	Equipment storage	L5-09	INSTRUMENT TABLE	1
Special classroom Bldg. No. 1	Equipment storage	L5-10	HAND STAND SUPPORT	1
Special classroom Bldg. No. 1	Equipment storage	L5-13	CATHETER TRAY	1
Special classroom Bldg. No. 1	Equipment storage	L5-14	FORCEPS STAND	6
Special classroom Bldg. No. 1	Equipment storage	L5-15	DRESSING JAR	6
Special classroom Bldg. No. 1	Equipment storage	L5-16	DRESSING SET	6
Special classroom Bldg. No. 1	Equipment storage	L5-17	SURGICAL SUTURE NEEDLE SET	6
Special classroom Bldg. No. 1	Equipment storage	L5-18	SUTURE SET	6
Special classroom Bldg. No. 1	Equipment storage	L5-19	SURGICAL INSTRUMENT SET	6
Special classroom Bldg. No. 1	Equipment storage	L5-20	DELIVERY INSTRUMENT SET	6
Special classroom Bldg. No. 1	Equipment storage	L5-21	RESUSCITATOR FOR BOTH NEONATAL & ADULT	1
Special classroom Bldg. No. 1	Equipment storage	L5-22	BREAST PUMP	2
Special classroom Bldg. No. 1	Equipment storage	L5-23	VAGINAL SPECULUM	6
Special classroom Bldg. No. 1	Equipment storage	L5-24	EDUCATIONAL MATERIALS & CONSUMABLES	6
Special classroom Bldg. No. 1	Equipment storage	L5-25	VOLUMETRIC FLASKS	6
Special classroom Bldg. No. 1	Equipment storage	L5-26	SURGEON HAND BRUSH	6
Special classroom Bldg. No. 1	Equipment storage	L5-27	OTOSCOPE SET	2
Special classroom Bldg. No. 1	Equipment storage	L5-28	RINOSCOPE SET	2
Special classroom Bldg. No. 1	Equipment storage	L5-29	REMOVAL SUTURE SET	6
Special classroom Bldg. No. 1	Equipment storage	L5-30	AIRWAY SET	2
Special classroom Bldg. No. 1	Equipment storage	L5-31	AMBU-BAG SET	2
Special classroom Bldg. No. 1	Equipment storage	L5-32	BOILING STERILIZER	1
Special classroom Bldg. No. 1	Equipment storage	L5-33	PERCUSSION HAMMER	6
Special classroom Bldg. No. 1	Equipment storage	L5-34	SPIROTEST	2
Special classroom Bldg. No. 1	Equipment storage	L5-35	GONIOMETER SET	2
Special classroom Bldg. No. 1	Equipment storage	L5-36	SUCTION UNIT, MANUAL, FOOT PEDAL	2
Special classroom Bldg. No. 1	Storage	L1-28	METAL SHELVES FOR GENERAL PUROPOSE	8
Special classroom Bldg. No. 1	Reagent room	L1-28	METAL SHELVES FOR GENERAL PUROPOSE	8
Special classroom Bldg. No. 1	Reagent room	L3-01	BINOCULAR EDUCATIONAL MICROSCOPE	30
Special classroom Bldg. No. 1	Reagent room	L3-09	pH METER	2
Special classroom Bldg. No. 1	Reagent room	L3-10	STOPWATCH FOR LABS	2
Special classroom Bldg. No. 1	Reagent room	L3-11	DISPENSING EQUIPMENT (SET)	4
Special classroom Bldg. No. 1	Reagent room	L3-14	GLASSWARE LAB. SET	2
Special classroom Bldg. No. 1	Reagent room	L3-15	FUNNEL SET	4
Special classroom Bldg. No. 1	Reagent room	L3-21	MORTAR WITH PESTLE SET	4
Special classroom Bldg. No. 1	Laboratory	L1-05	DESK, TUTOR	1
Special classroom Bldg. No. 1	Laboratory	L1-13	CHAIRS, TUTOR	1
Special classroom Bldg. No. 1	Laboratory	L1-23	LAB STOOL	30
Special classroom Bldg. No. 1	Laboratory	L1-24	LAB TABLE	3
Special classroom Bldg. No. 1	Laboratory	L1-31	LAB TABLE, EQUIPMENT	5
Special classroom Bldg. No. 1	Laboratory	L2-08	BLACKBOARD	1
Special classroom Bldg. No. 1	Laboratory	L3-02	AUTOCLAVE, PORTABLE	2
Special classroom Bldg. No. 1	Laboratory	L3-03	AUTOCLAVE, LABORATORY	1
Special classroom Bldg. No. 1	Laboratory	L3-04	ANALYTICAL BALANCE	2
Special classroom Bldg. No. 1	Laboratory	L3-05	CENTRIFUGE	2
Special classroom Bldg. No. 1	Laboratory	L3-06	HOT AIR OVEN	2
Special classroom Bldg. No. 1	Laboratory	L3-07	REFRIGERATOR	1

8. Table for Equipment Arrangement

Bldg.	Room	Equipment No.	Description	Q'ty
Special classroom Bldg. No. 1	Laboratory	L3-08	FREEZER	1
Special classroom Bldg. No. 1	Laboratory	L3-12	INCUBATOR	2
Special classroom Bldg. No. 1	Laboratory	L3-13	WATER STILL	1
Special classroom Bldg. No. 1	Laboratory	L3-16	COLORIMETER	2
Special classroom Bldg. No. 1	Laboratory	L3-17	BATH TANK	2
Special classroom Bldg. No. 1	Laboratory	L3-18	SHAKERS	2
Special classroom Bldg. No. 1	Laboratory	L3-19	MIXER	2
Special classroom Bldg. No. 1	Laboratory	L3-20	CENTRIFUGE, HAEMATOCRIT	2
Special classroom Bldg. No. 2	Reading room	L1-03	TABLE, READING ROOM	12
Special classroom Bldg. No. 2	Reading room	L1-10	CHAIRS, READING ROOM	12
Special classroom Bldg. No. 2	Library	L1-30	TABLE, LIBRARY	5
Special classroom Bldg. No. 2	Library	L1-10	CHAIRS, READING ROOM	20
Special classroom Bldg. No. 2	Library	L1-27	METAL SHELVES FOR LIBRARY	30
Special classroom Bldg. No. 2	Library	L1-07	DESK, GENERAL ADMINISTRATION	1
Special classroom Bldg. No. 2	Library	L1-14	CHAIRS, GENERAL ADMINISTRATION	2
Special classroom Bldg. No. 2	Book storage	L1-27	METAL SHELVES FOR LIBRARY	8
Special classroom Bldg. No. 2	Book storage	L1-29	METAL CABINET FOR GENERAL PURPOSE	2
Special classroom Bldg. No. 2	Copying room	L1-28	METAL SHELVES FOR GENERAL PURPOSE	1
Special classroom Bldg. No. 2	Copying room	L6-02	PHOTOCOPY MACHINE, GENERAL	1
Special classroom Bldg. No. 2	Strage	L1-28	METAL SHELVES FOR GENERAL PURPOSE	6
Special classroom Bldg. No. 2	Computer room	L1-18	COMPUTER TABLE	16
Special classroom Bldg. No. 2	Computer room	L1-19	COMPUTER CHAIR	30
Special classroom Bldg. No. 2	Computer room	L1-05	DESK, TUTOR	1
Special classroom Bldg. No. 2	Computer room	L1-13	CHAIRS, TUTOR	1
Special classroom Bldg. No. 2	Computer room	L6-03	DESK TOP COMPUTER (FOR TRAINING)	16
Special classroom Bldg. No. 2	Computer room	L6-04	PRINTER (FOR TRAINING)	1
Auditorium Bldg.	Anteroom			
Auditorium Bldg.	Stage	L2-04	WALL SCREEN, AUDITORIUM	1
Auditorium Bldg.	Auditorium	L1-17	CHAIRS, AUDITORIUM	310
Auditorium Bldg.	Auditorium	L1-17-1	CART FOR CHAIRS, AUDITORIUM	35
Auditorium Bldg.	Storage 1	L2-03	MONITOR, VIDEO PLAYER, DATA PROJECTOR	1
Auditorium Bldg.	Storage 1	L2-06	AUDIO SET, AUDITORIUM	1
Auditorium Bldg.	Storage 1	L2-07	DRY-WIPE MAGNETIC WHITEBOARD	1
Auditorium Bldg.	Storage 2	L1-04	TABLE, AUDTORIUM	25
Auditorium Bldg.	Storage 2	L1-04-1	CART FOR TABLE, AUDTORIUM	3
Canteen Bldg.	Locker room (for males)			
Canteen Bldg.	Locker room (for females)			
Canteen Bldg.	Food storage 1			
Canteen Bldg.	Food storage 2			
Canteen Bldg.	Office	L1-07	DESK, GENERAL ADMINISTRATION	2
Canteen Bldg.	Office	L1-14	CHAIRS, GENERAL ADMINISTRATION	2
Canteen Bldg.	Kitchen			
Canteen Bldg.	Pantry			
Canteen Bldg.	Canteen	L1-21	TABLE, REFECTORY	24
Canteen Bldg.	Canteen	L1-22	CHAIRS, REFECTORY	144
Laundry Bldg.	Laundry			
Laundry Bldg.	Ironing room			
Laundry Bldg.	Temporary washing storeroom			
Dormitory for male students	Dormitory room	L1-25	BUNK-BED	50
Dormitory for male students	Study space	L1-02	DORMITORY DESK	25
Dormitory for male students	Study space	L1-15	CHAIRS, DORMITORY	100
Dormitory for female students	Dormitory room	L1-25	BUNK-BED	50
Dormitory for female students	Study space	L1-02	DORMITORY DESK	25
Dormitory for female students	Study space	L1-15	CHAIRS, DORMITORY	100
Guard house	Guardroom	L1-14	CHAIRS, GENERAL ADMINISTRATION	2
Garage	Garage	L11-01	BUS, MIDDLE SIZE	1
Garage	Garage	L11-02	BUS, SMALL SIZE	1