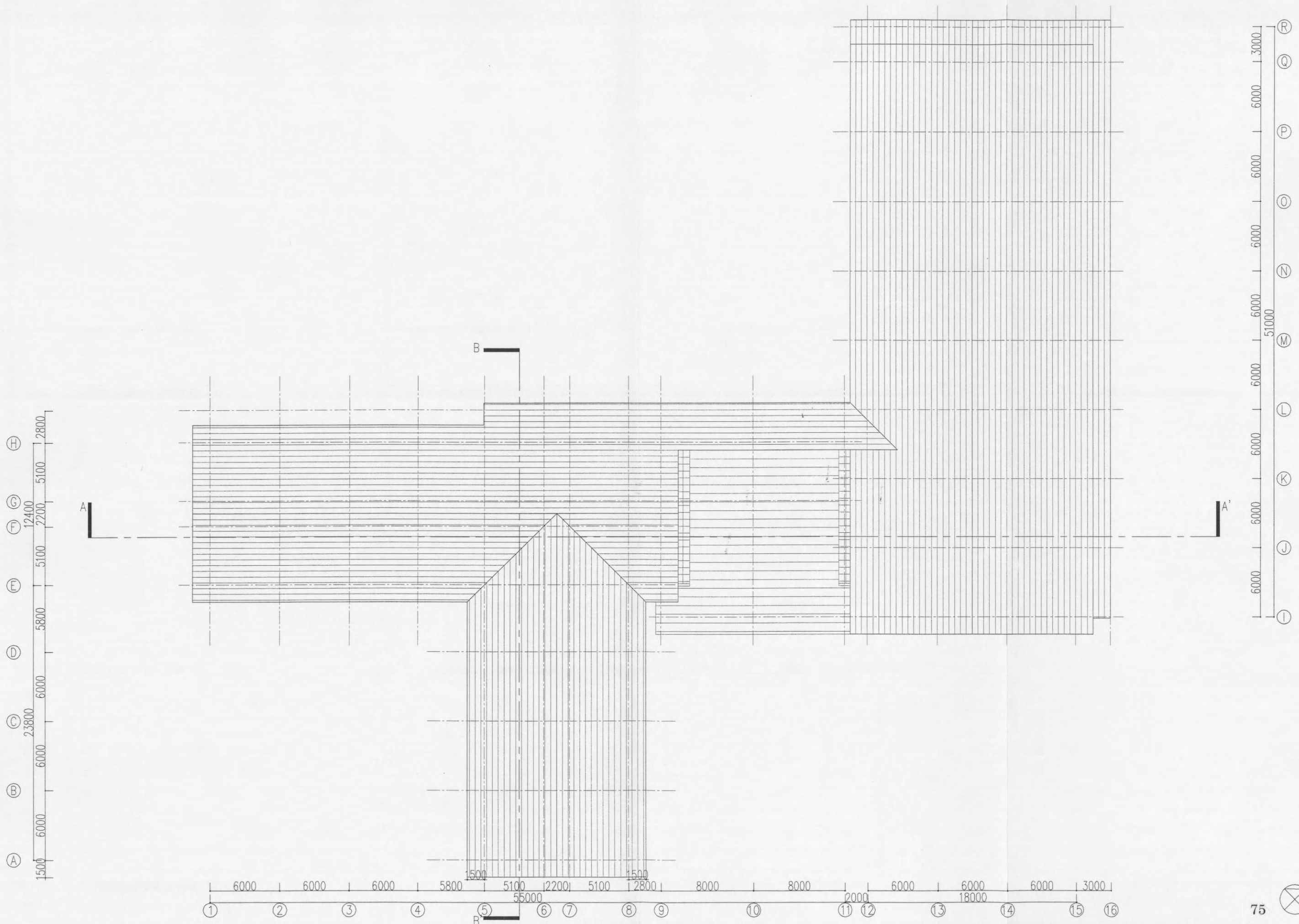
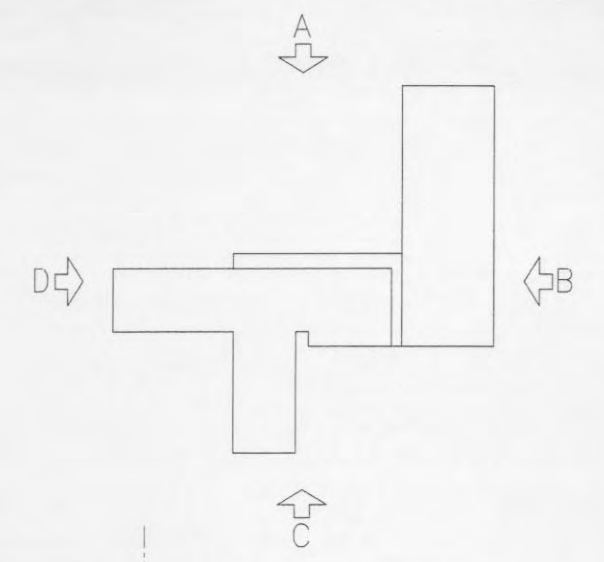


	(m ²)
2F	
Area V	748.1
Area VI	864.0
Area VII	105.4
Subtotal	1,717.5
Total	3,756.5

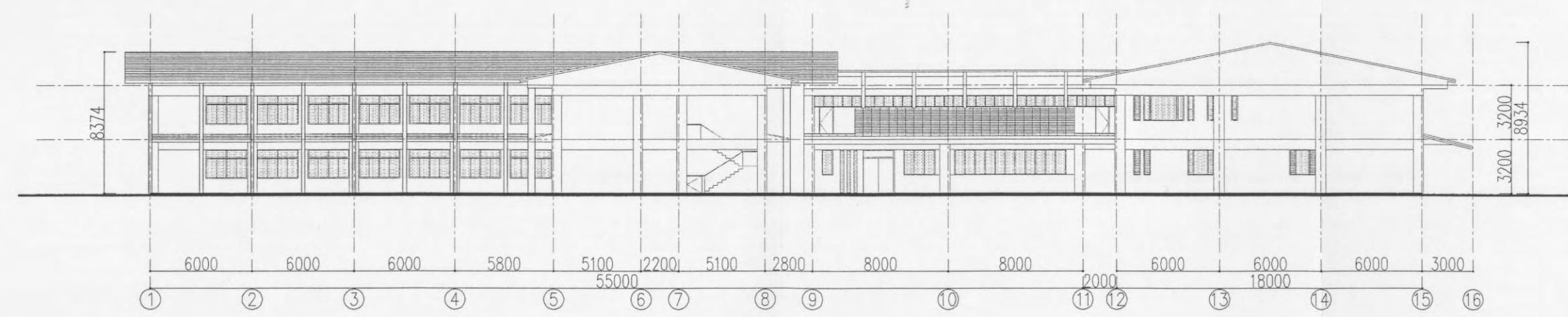
トンガ王国ヴァイオラ病院改善整備計画基本設計調査

外科病棟，中央診療
2階平面図
SCALE 1:300





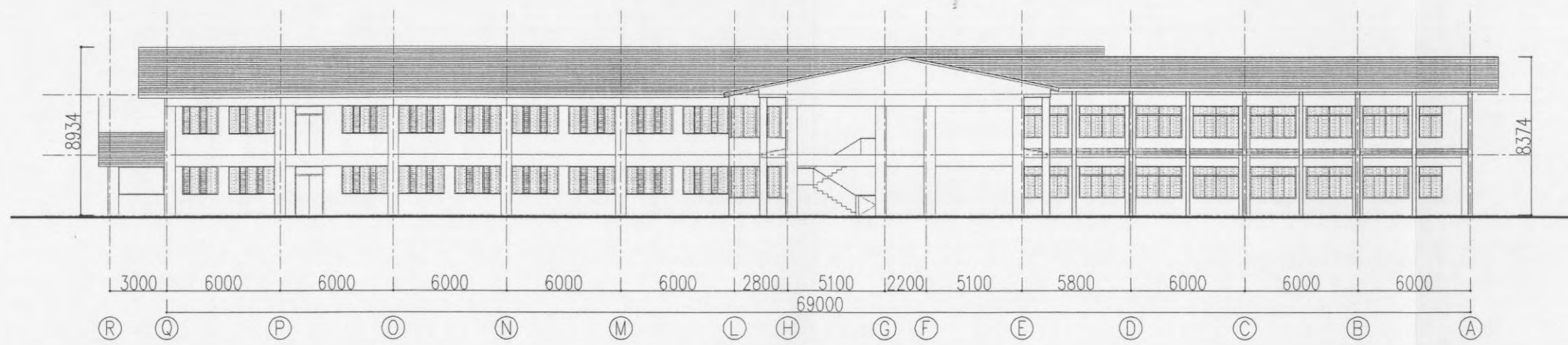
A Elevation



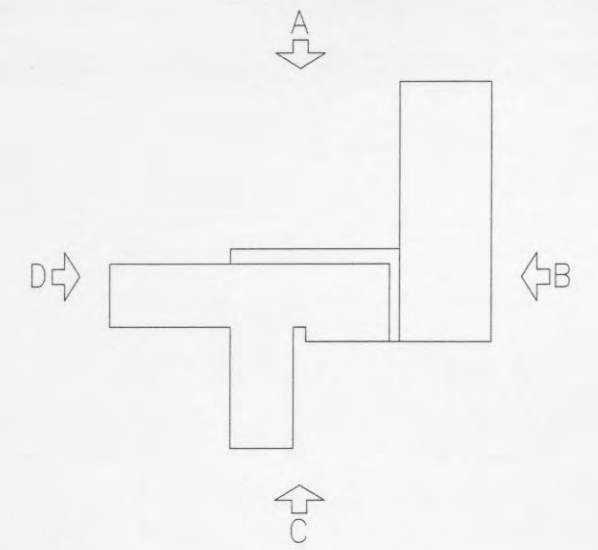
C Elevation

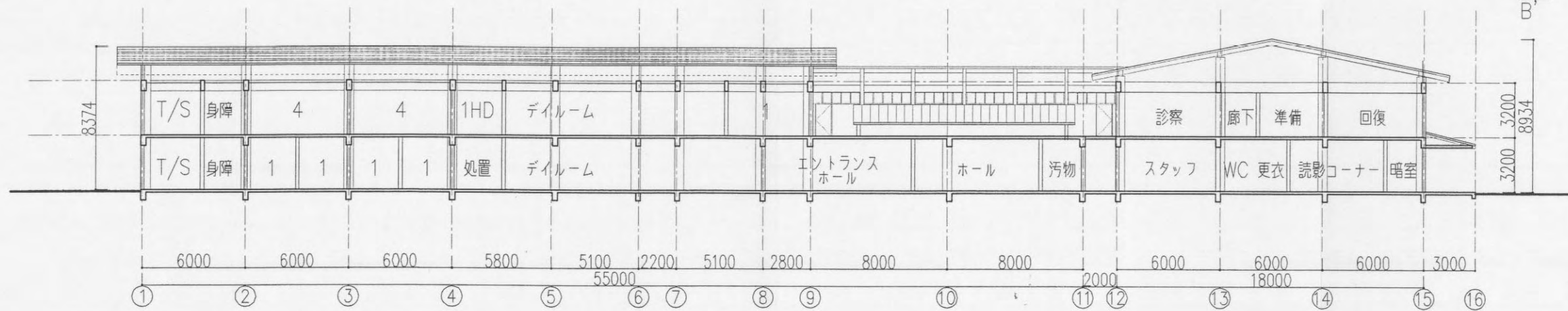


B Elevation

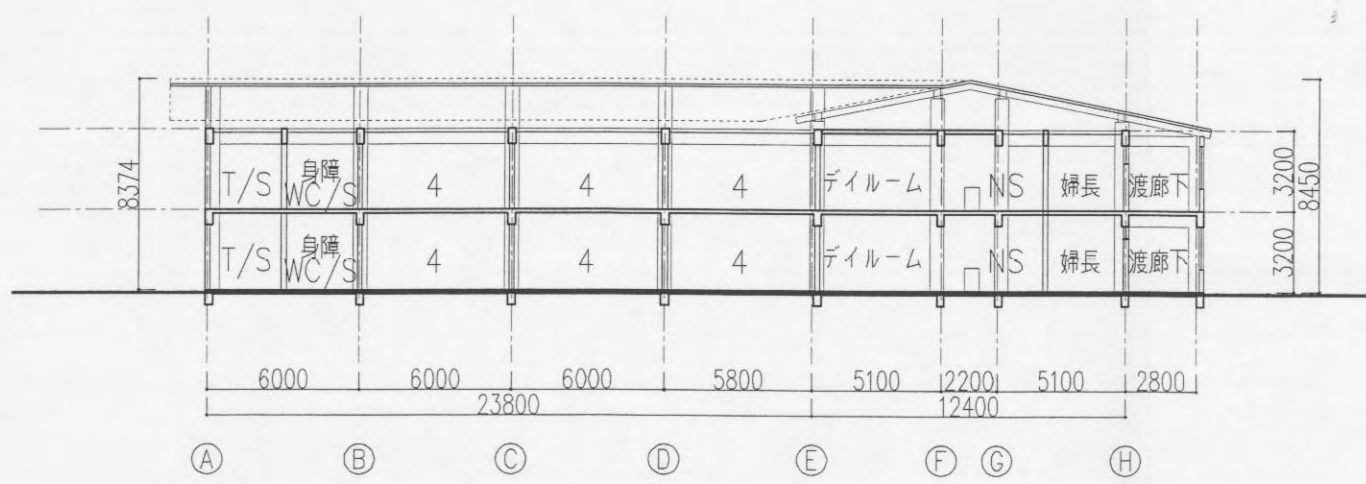


D Elevation





A-A' Section



B-B' Section

