

Desde Pozo La Floresta

DIP 8"
1,848 m³/day (2018)

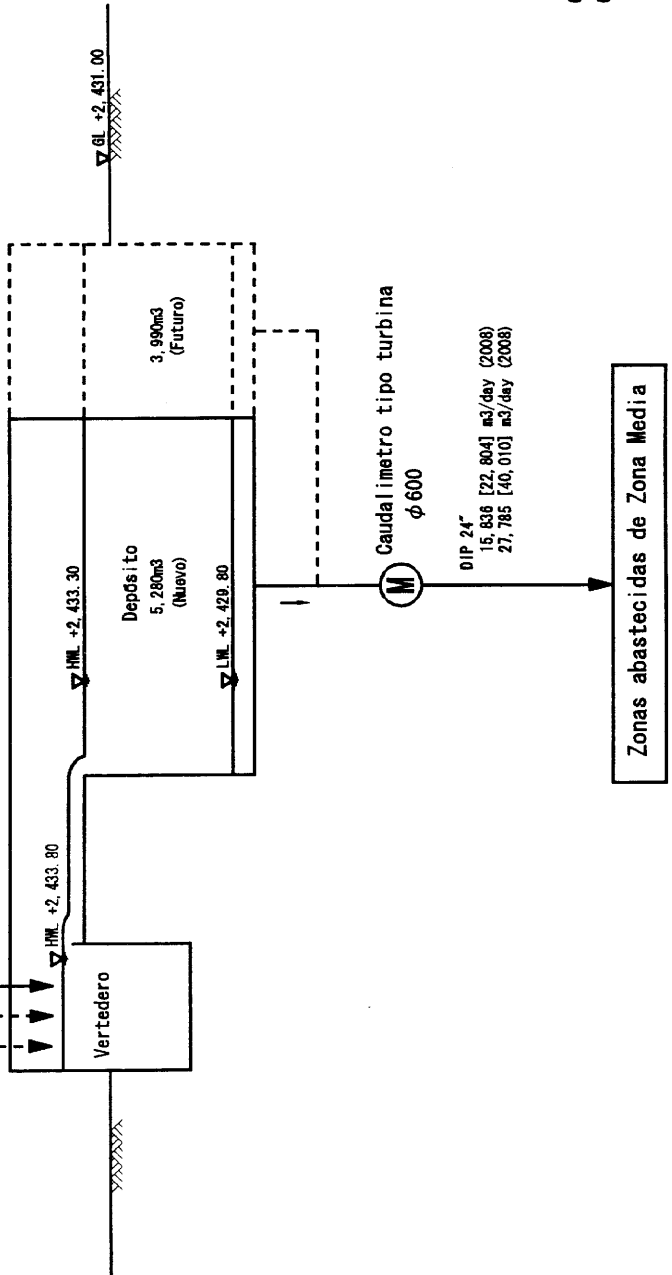
Desde Pozo Zona Media

DIP 8"
1,900 m³/day (2018)

Desde Deposito San Isidro Pumping Station

DIP 20"
15,836 m³/day (2008)
26,935 m³/day (2018)

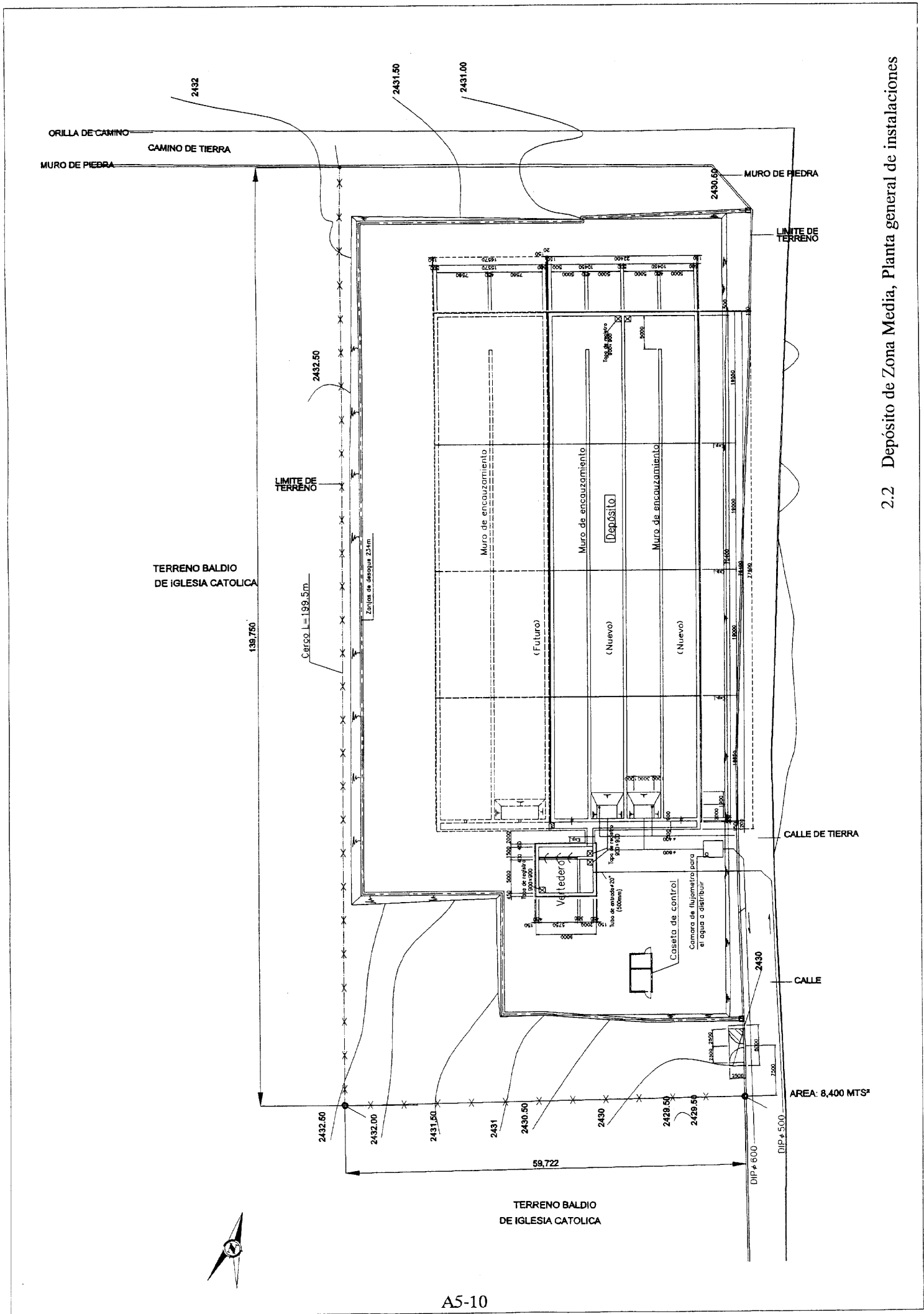
Deposito Zona Media



⊙ : Flujoimetro
⊙ : Bomba

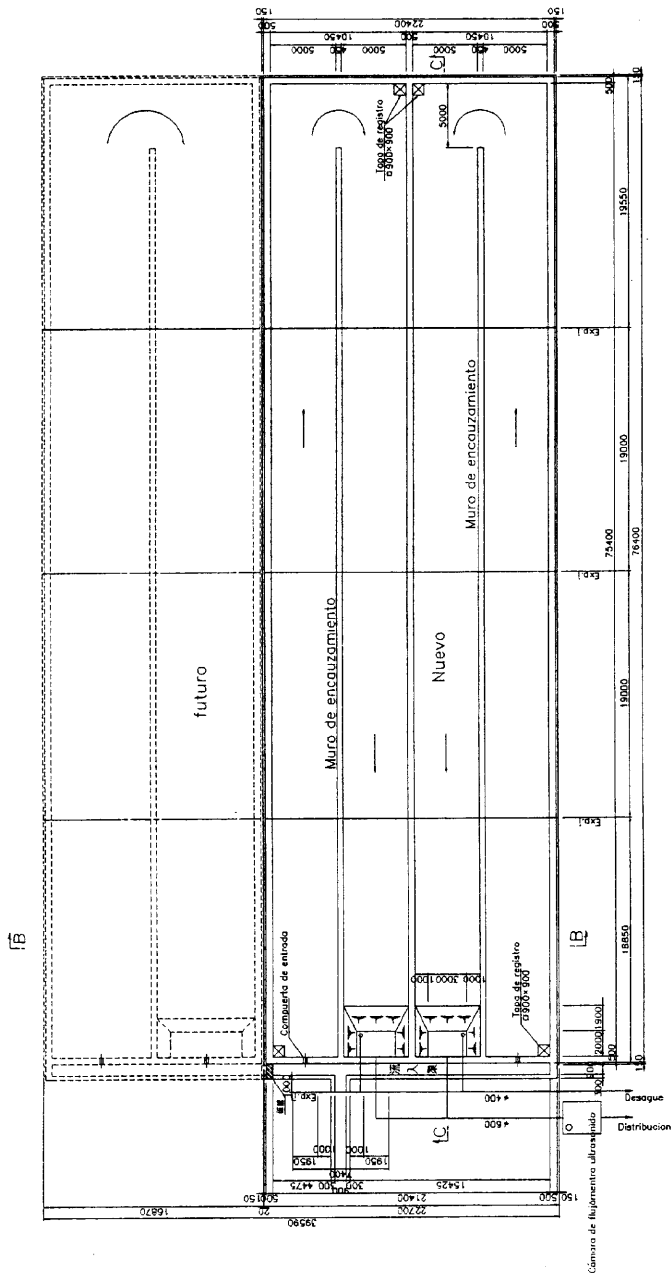
2.1 Depósito de Zona Media, Diagrama de flujo del sistema

* El caudal representa el caudal máximo diario.
El caudal indicado en () significa el caudal máximo horario.

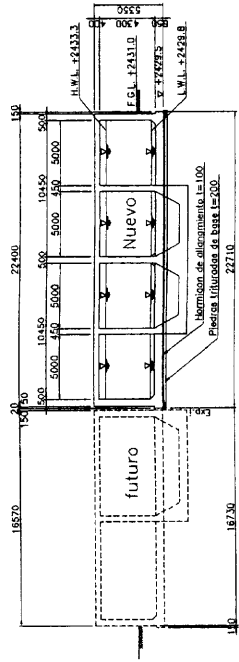


2.2 Depósito de Zona Media, Planta general de instalaciones

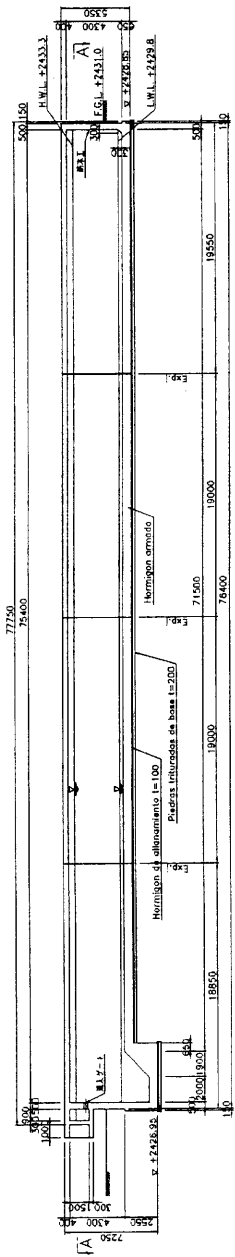
A - A



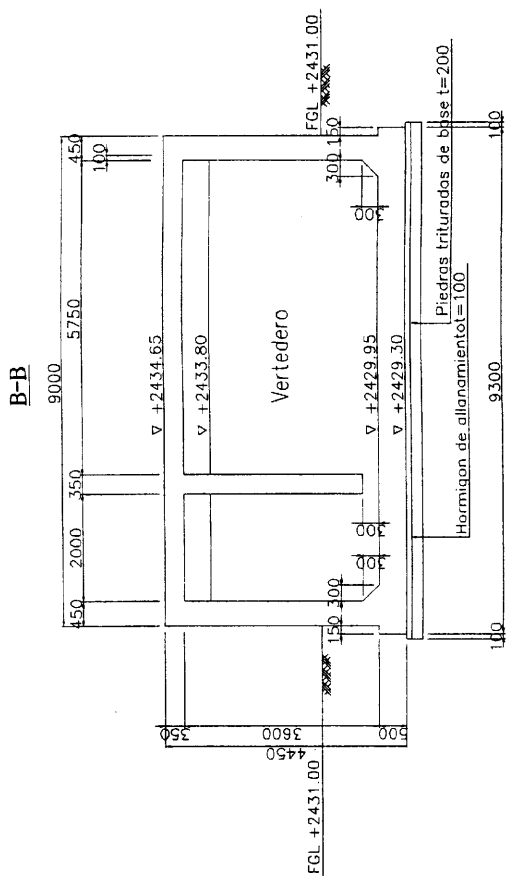
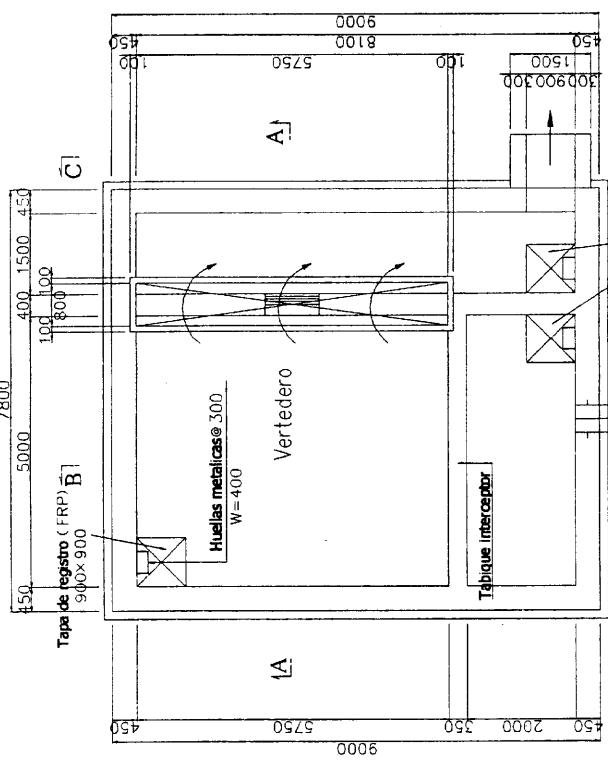
B - B



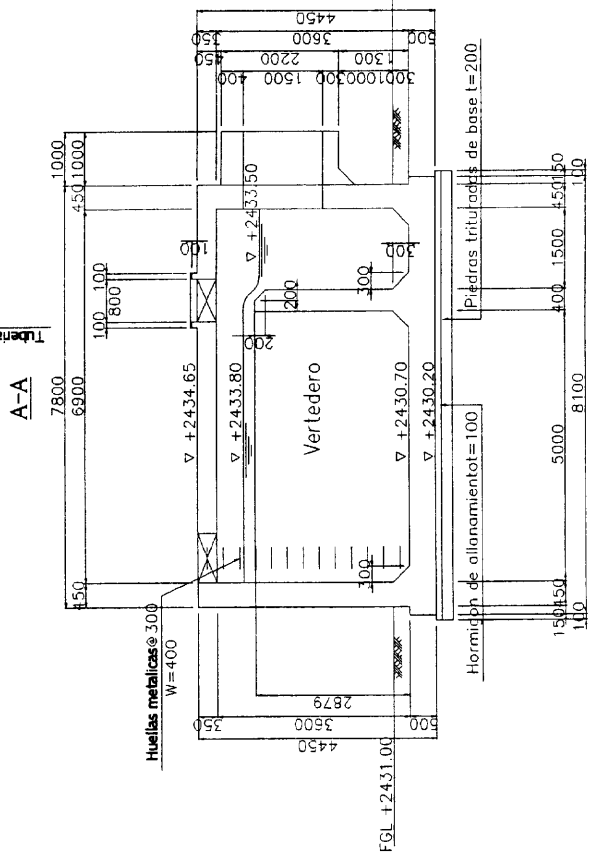
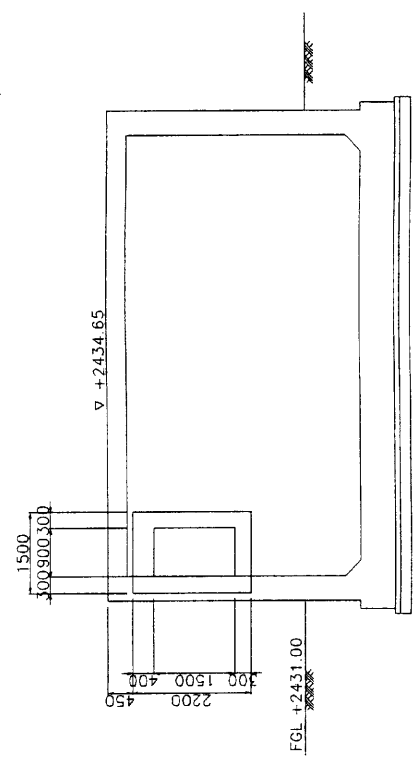
C - C



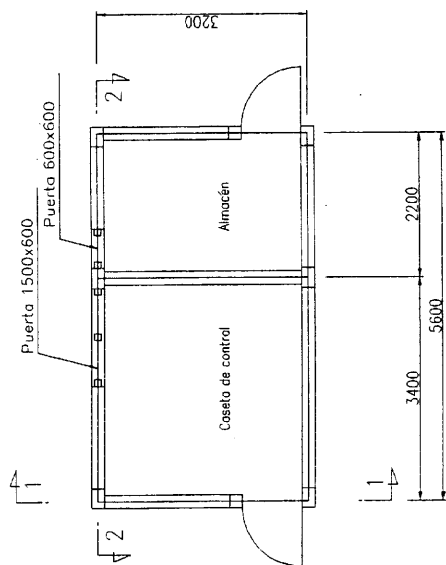
Plano



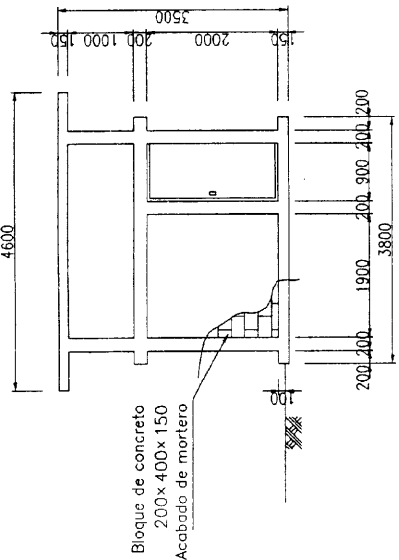
C-C



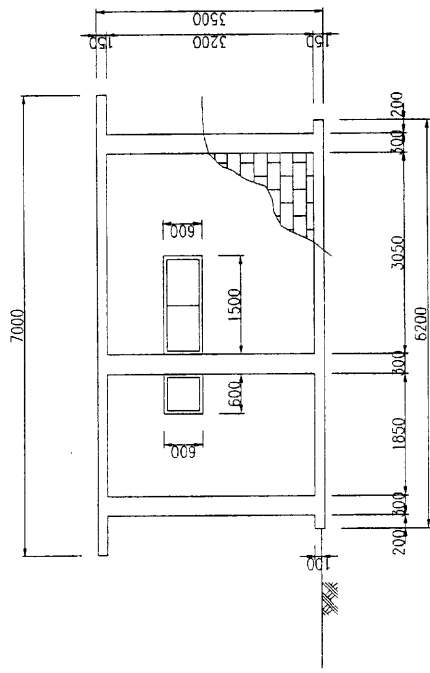
Plano



1-1

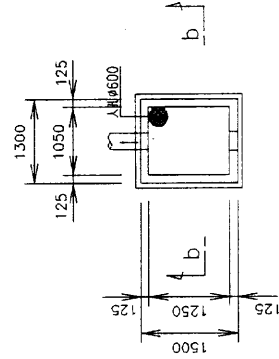


2-2

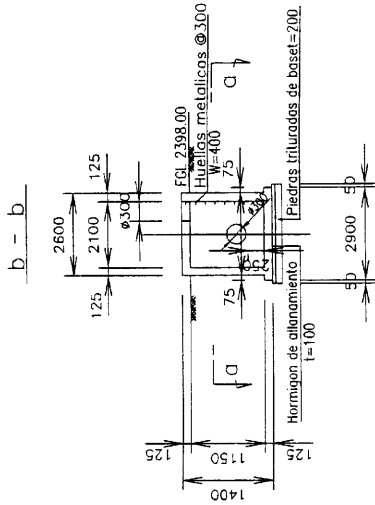


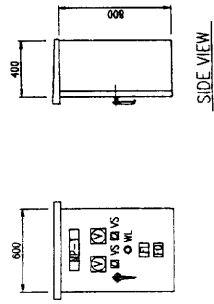
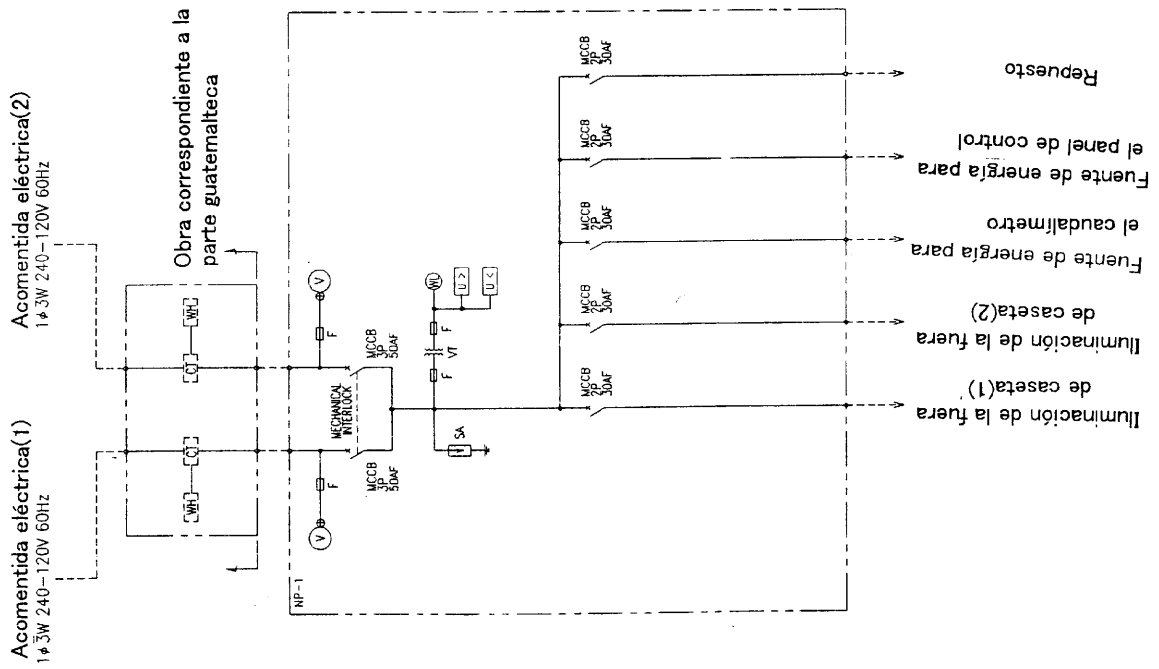
Camara de flujometro para el agua de distribuir

Plano

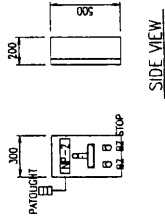


Seccion





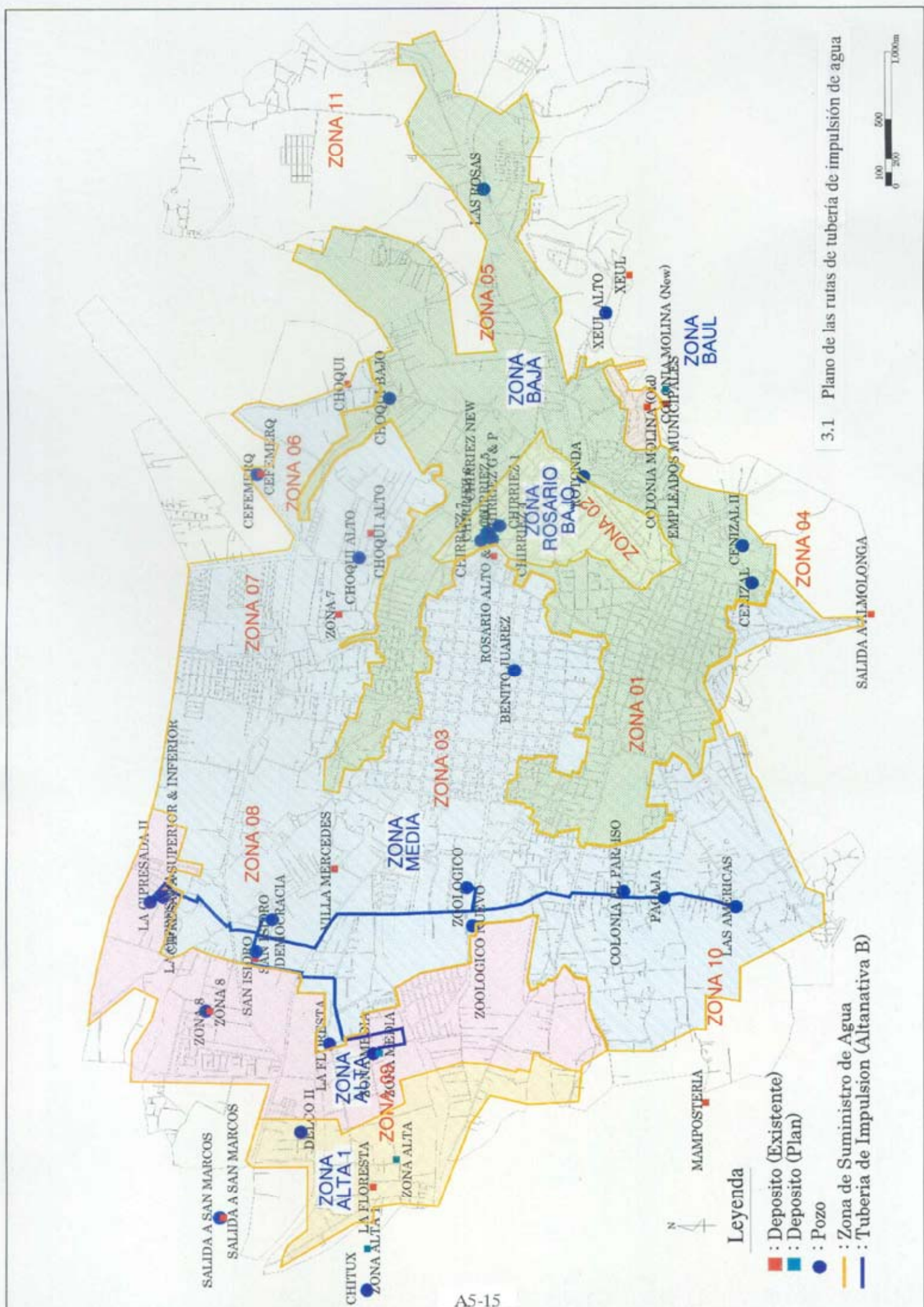
NP-1



NP-2

Panel Indicador (1:40)
(ZONA MEDIA)

NP	Nombre
NP-1	Panel de recepción eléctrica y indicador
NP-2	Caja de panel indicador



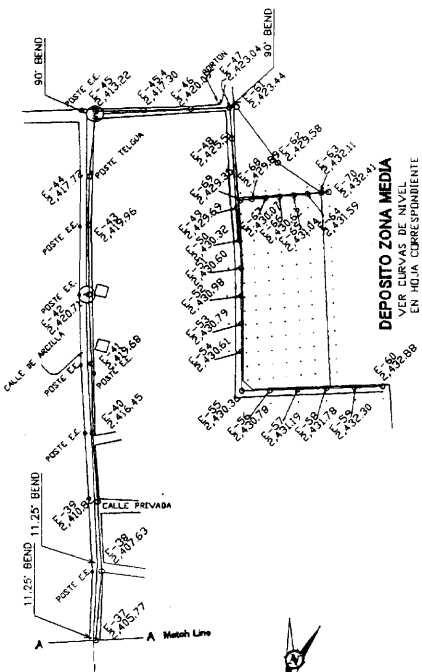
3.1 Plano de las rutas de tubería de impulsión de agua

Leyenda

- : Deposito (Existente)
- : Deposito (Plan)
- : Pozo
- : Zona de Suministro de Agua
- : Tubería de Impulsión (Alternativa B)

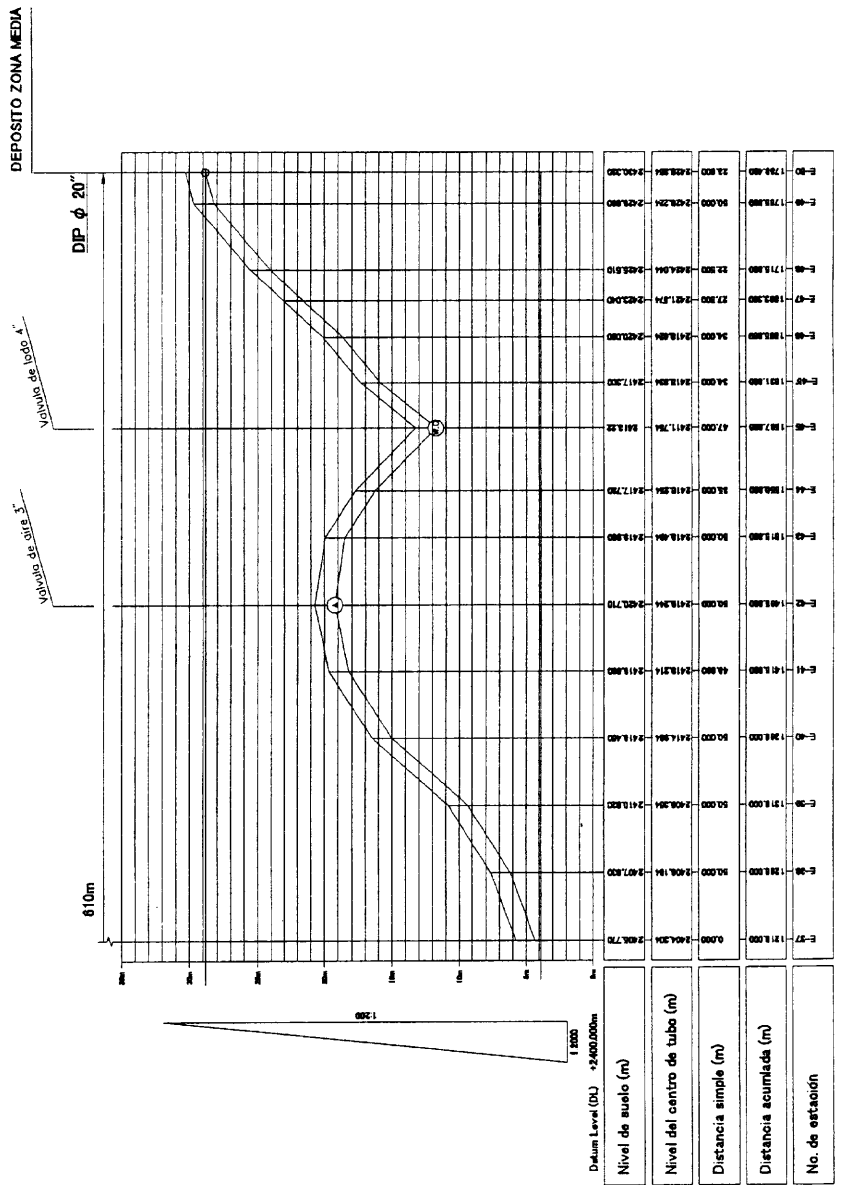
Planta general

REFERENCIAS	
	NOMBRE DE GOBIERNO
	PLAN DE LA ISLA
	NOMBRE DEL PROYECTO
	UBICACION
	TIPO DE OBRA
	NOMBRE DEL CONTRATISTA
	ESCALA

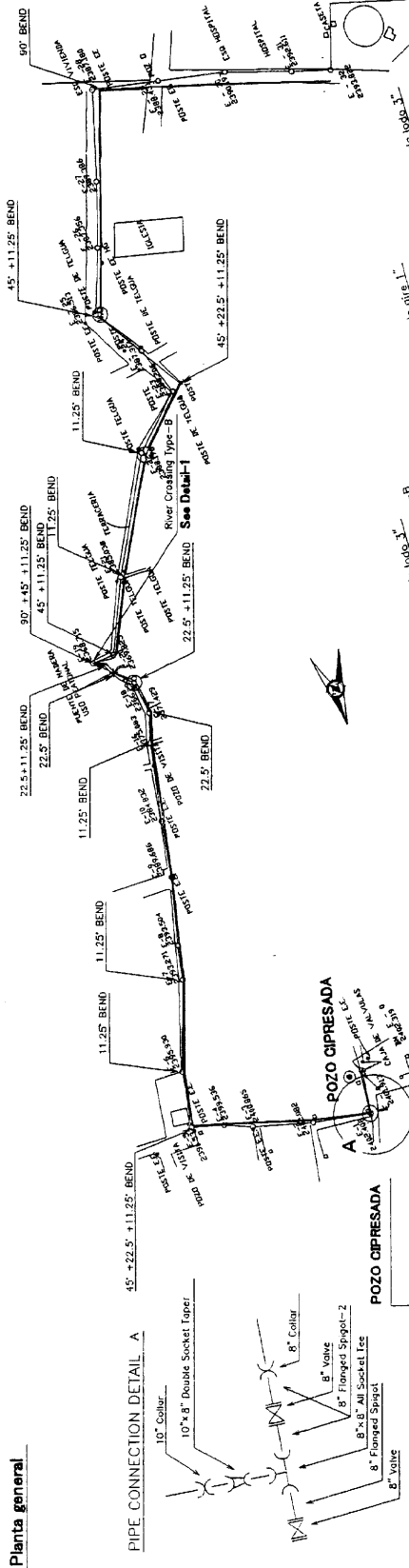
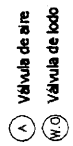


- Válvula de aire
- W/O

Seccion longitudinal



REFERENCIAS	
	BASE DE CONCRETO
	CUBETA DE BOMBEO
	POZO DE BOMBEO
	VÁLVULA
	CONDUITO
	CAJA DE VALVULAS
	POZO DE VISITA
	CAPA DE CUBIERTA DE POZO
	PAVIMENTO



DEPOSITO SAN ISIDRO

DEPOSITO SAN ISIDRO

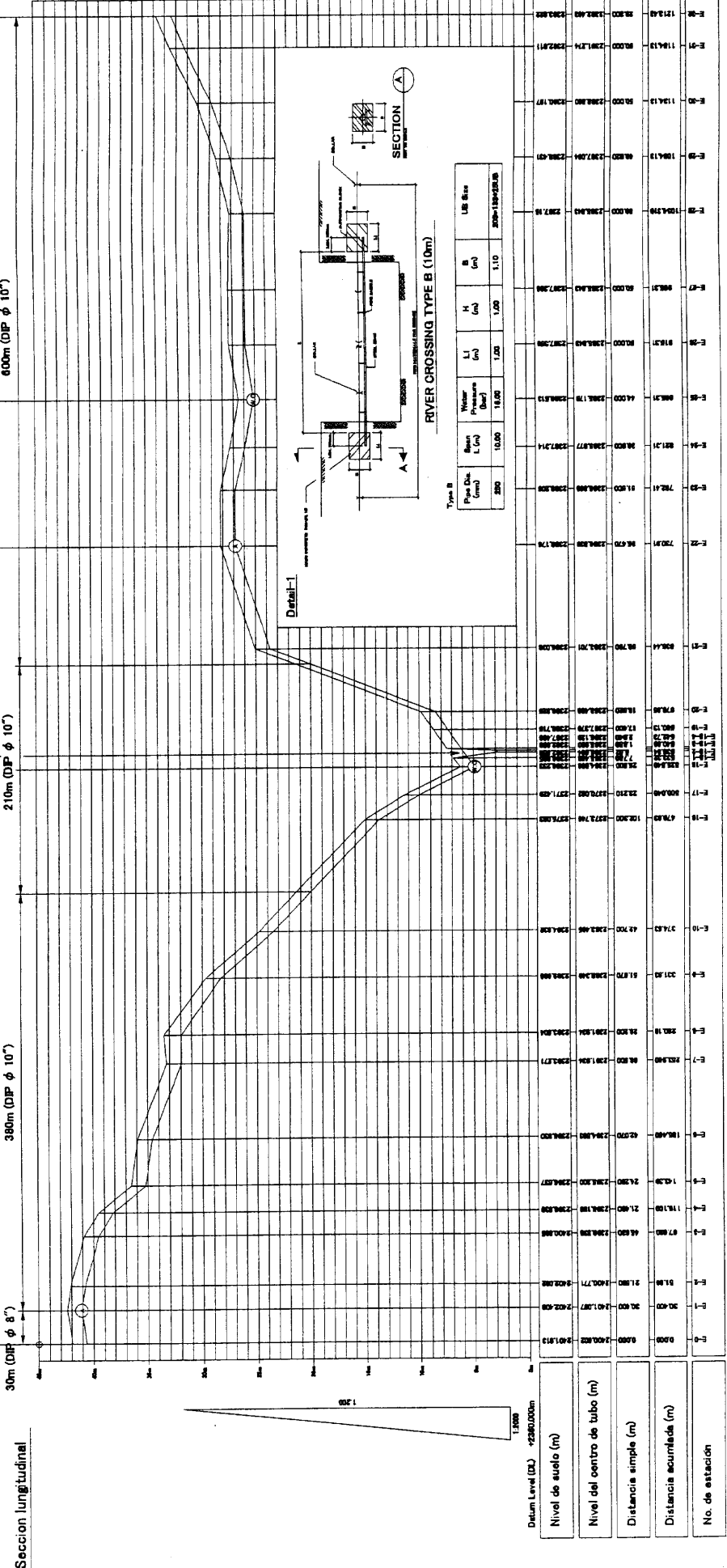
DEPOSITO SAN ISIDRO

DEPOSITO SAN ISIDRO

DEPOSITO SAN ISIDRO

DEPOSITO SAN ISIDRO

DEPOSITO SAN ISIDRO



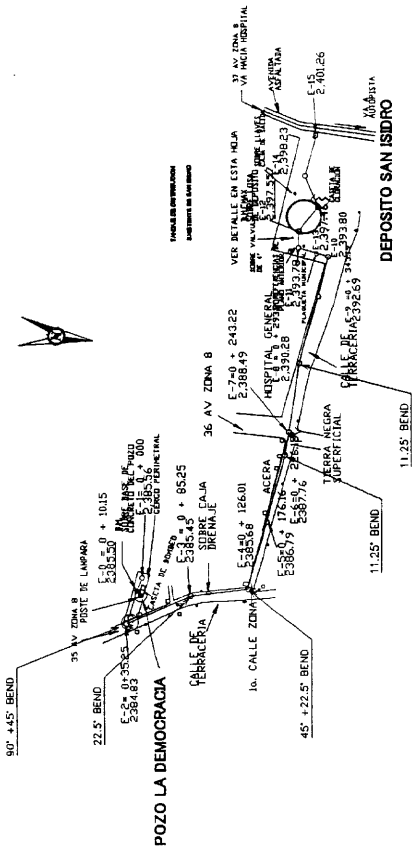
3.3 Corte longitudinal del tubo de impulsión (Pozo Chipresada - Depósito San Isidro)

Planta general

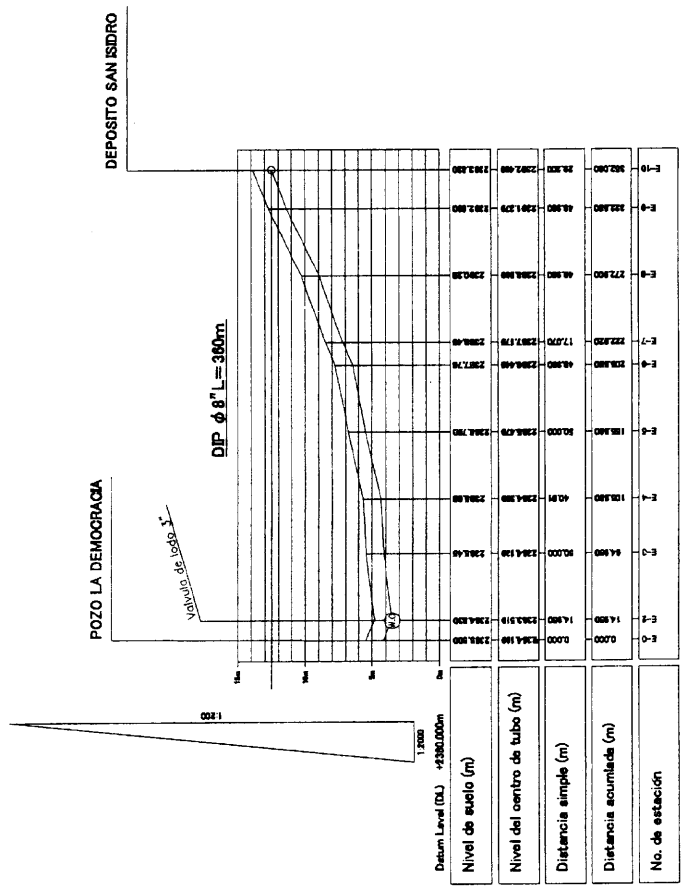
REFERENCIAS

	BASE DE COQUEFIDO
	CARTERA DE BOMBEO
	POSTE
	NO. O. CAMARERA
	VIVIENDA
	POZO DE VISITA
	COPIAS DE CAMARERA
	CASAS DE RECINTO DE T.A.
	PARVULA

- (A) Válvula de aire
- (V) Válvula de lodo



Sección longitudinal

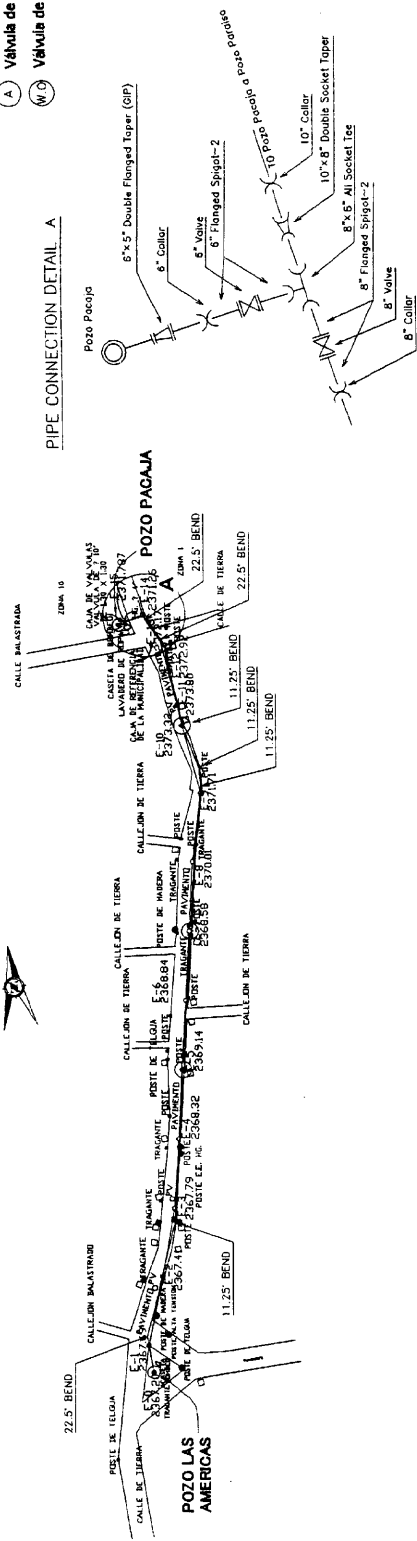


3.4 Corte longitudinal del tubo de impulsión
(Poza Democracia - Depósito San Isidro)

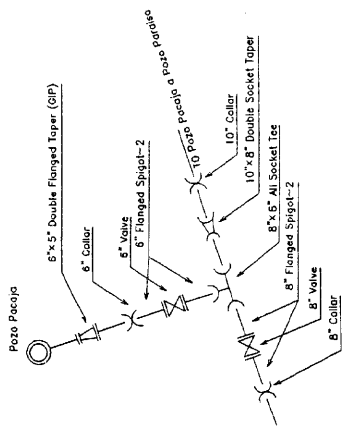
Planta general

REFERENCIAS	
□	BASE DE COCIMENTO
○	CASITA DE BOMBEO
○	POSTE
○	REGLO CLASIFICADO
○	VÁLVULA
○	P.V.O.
○	FUENTE DE TIERRA
○	CONJUNTO CLASIFICADO
○	CABLE DE ACEROS DE 12.5
○	PANELA

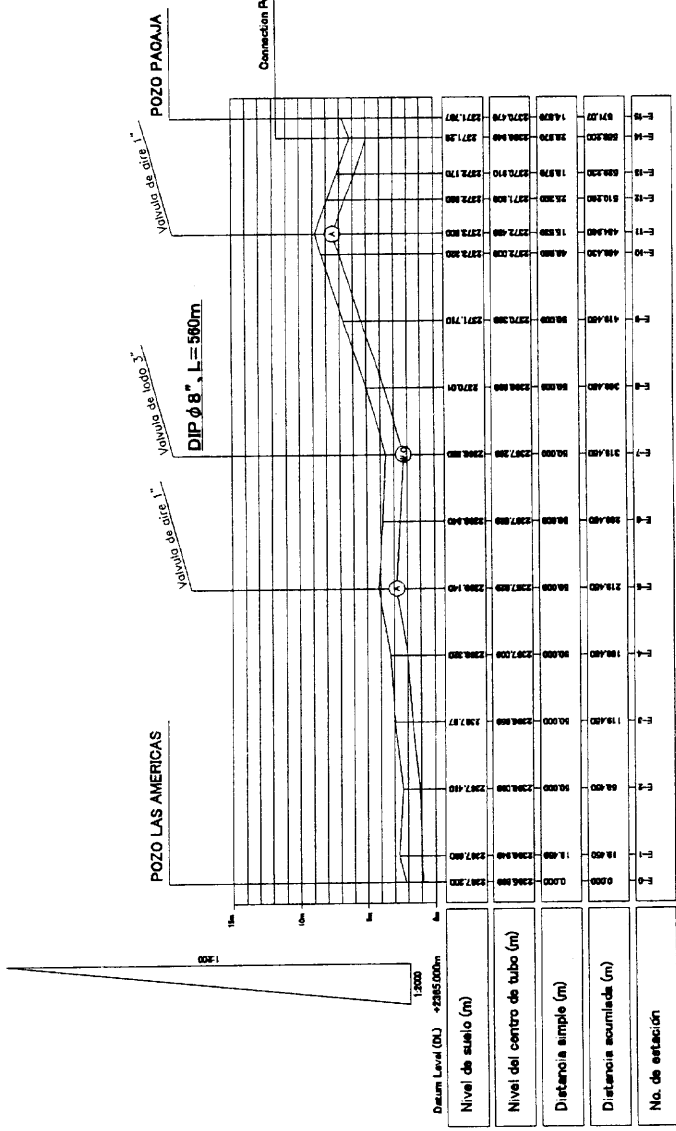
- (A) Válvula de aire
- (W.9) Válvula de fondo



PIPE CONNECTION DETAIL A



Seccion longitudinal



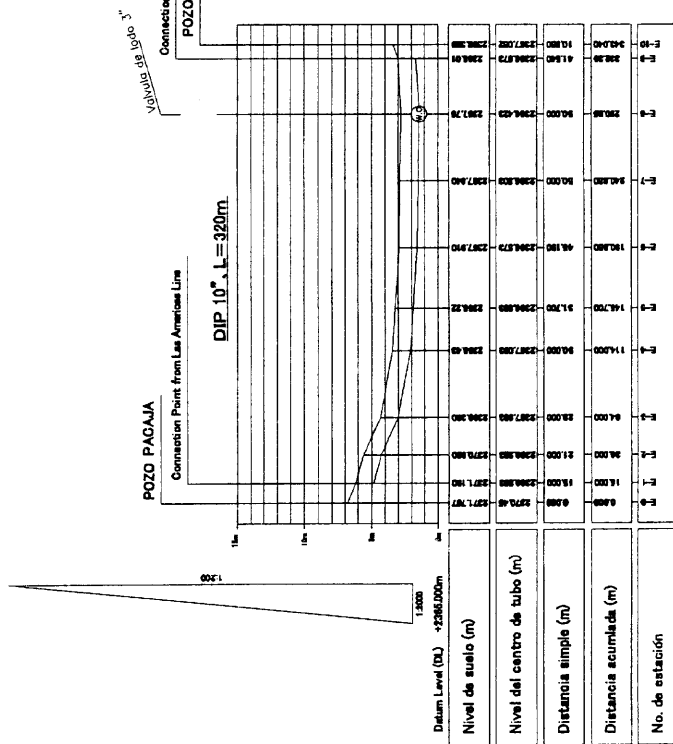
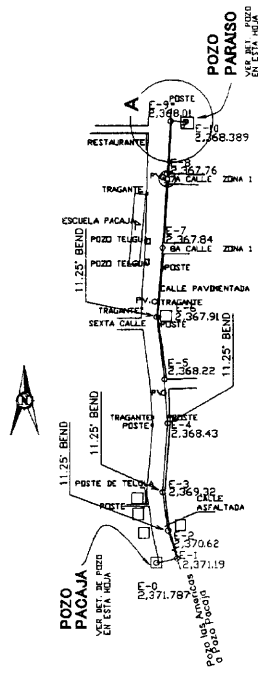
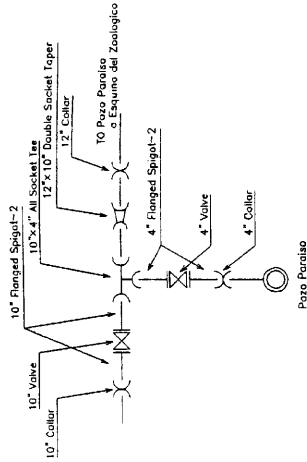
3.5 Corte longitudinal del tubo de impulsión (Pozo Las Americas - Depósito San Isidro)

REFERENCIAS

	BASE DE CONCRETO
	CAMITA DE BAMBINO
	POSTE
	NO. O CUBIERTA
	VIVIENDA
	POZO DE VISITA
	COPANTE O PLANE
	CALLE DE BENTRO DE VA
	PARED

- (A) Válvula de aire
- (M.9) Válvula de lodo

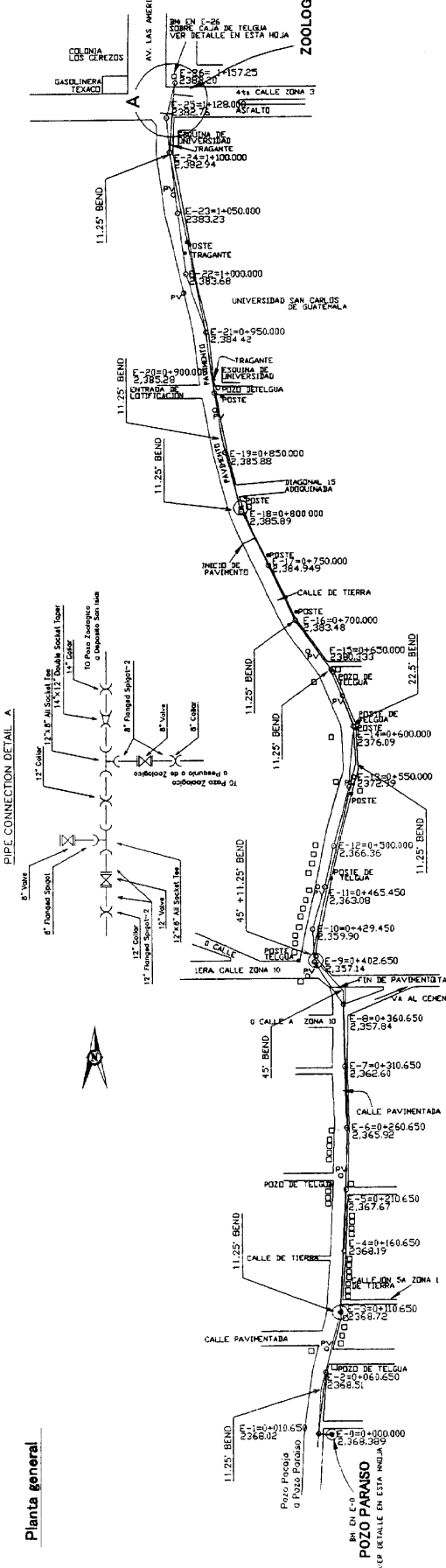
PIPE CONNECTION DETAIL A



REFERENCIAS

BASE DE CONCRETO
CARTELA DE BOMBO
POSTE
REG. 100 CLAVINA
VIVIERA
P.V.O.
COMPACTE FINALE
CAJAS DE REGISTRO DE STA.
PARALELA

- (A) VÁLVULA DE AIRE
- (W.D) VÁLVULA DE TODO

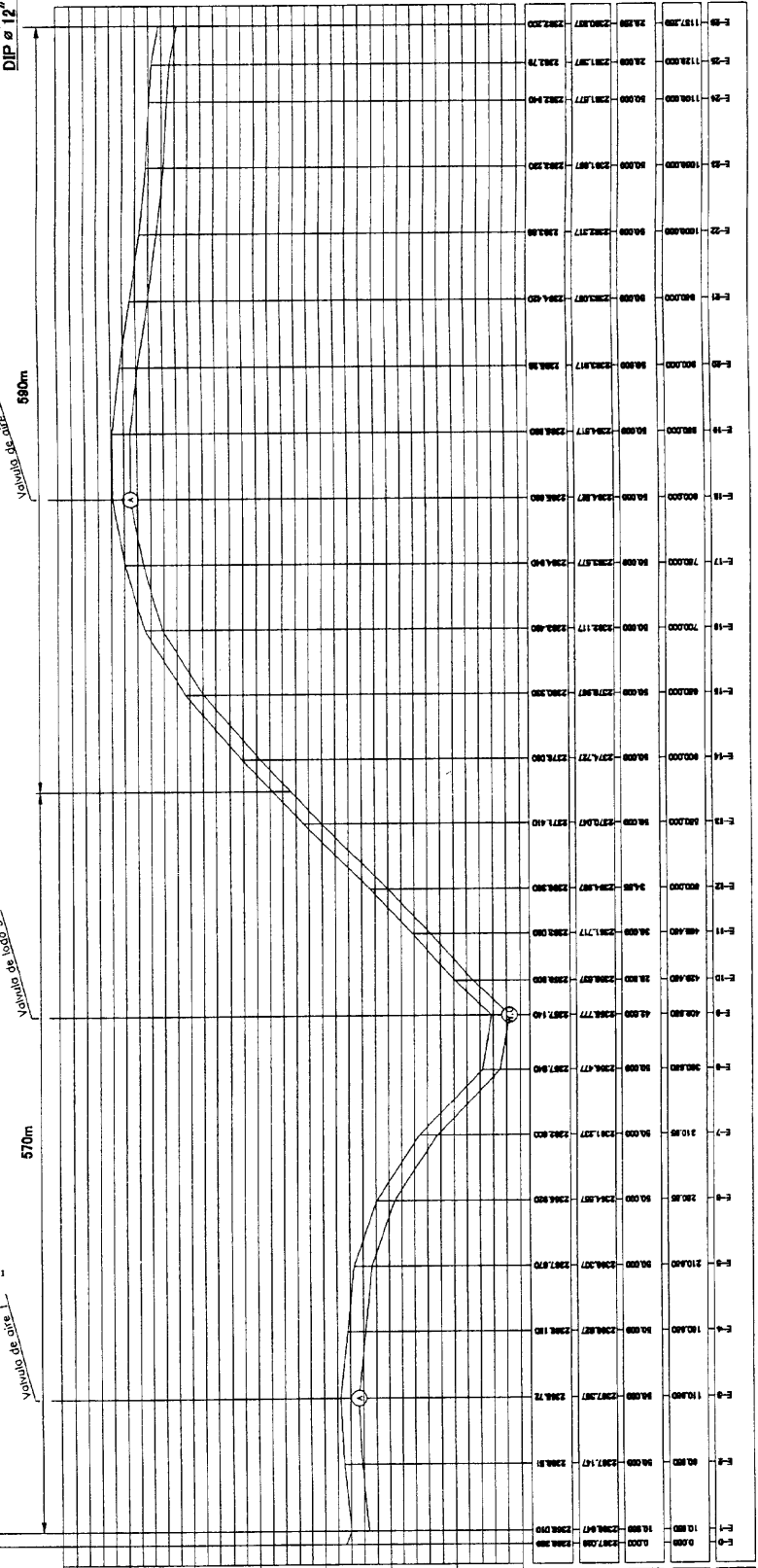


Connection Point to Zoologico Junction - Deposito San Isidro

570m

Connection Point from Parque Line

Seccion longitudinal



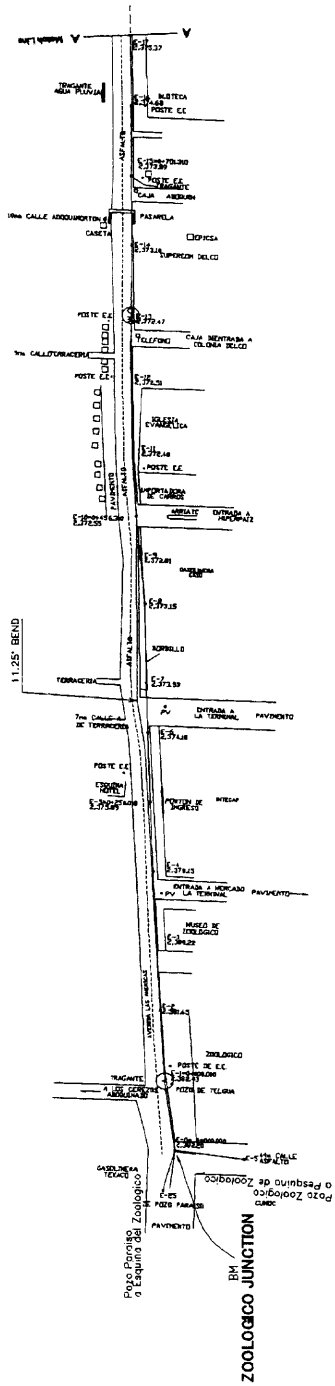
Nivel de suelo (m)	Nivel del centro de tubo (m)	Distancia simple (m)	Distancia acumulada (m)	No. de estacion
0.000	0.000	0.00	0.00	E-0
0.000	0.000	0.00	0.00	E-1
0.000	0.000	0.00	0.00	E-2
0.000	0.000	0.00	0.00	E-3
0.000	0.000	0.00	0.00	E-4
0.000	0.000	0.00	0.00	E-5
0.000	0.000	0.00	0.00	E-6
0.000	0.000	0.00	0.00	E-7
0.000	0.000	0.00	0.00	E-8
0.000	0.000	0.00	0.00	E-9
0.000	0.000	0.00	0.00	E-10
0.000	0.000	0.00	0.00	E-11
0.000	0.000	0.00	0.00	E-12
0.000	0.000	0.00	0.00	E-13
0.000	0.000	0.00	0.00	E-14
0.000	0.000	0.00	0.00	E-15
0.000	0.000	0.00	0.00	E-16
0.000	0.000	0.00	0.00	E-17
0.000	0.000	0.00	0.00	E-18
0.000	0.000	0.00	0.00	E-19
0.000	0.000	0.00	0.00	E-20
0.000	0.000	0.00	0.00	E-21
0.000	0.000	0.00	0.00	E-22
0.000	0.000	0.00	0.00	E-23
0.000	0.000	0.00	0.00	E-24
0.000	0.000	0.00	0.00	E-25
0.000	0.000	0.00	0.00	E-26
0.000	0.000	0.00	0.00	E-27
0.000	0.000	0.00	0.00	E-28
0.000	0.000	0.00	0.00	E-29
0.000	0.000	0.00	0.00	E-30
0.000	0.000	0.00	0.00	E-31
0.000	0.000	0.00	0.00	E-32
0.000	0.000	0.00	0.00	E-33
0.000	0.000	0.00	0.00	E-34
0.000	0.000	0.00	0.00	E-35
0.000	0.000	0.00	0.00	E-36
0.000	0.000	0.00	0.00	E-37
0.000	0.000	0.00	0.00	E-38
0.000	0.000	0.00	0.00	E-39
0.000	0.000	0.00	0.00	E-40
0.000	0.000	0.00	0.00	E-41
0.000	0.000	0.00	0.00	E-42
0.000	0.000	0.00	0.00	E-43
0.000	0.000	0.00	0.00	E-44
0.000	0.000	0.00	0.00	E-45
0.000	0.000	0.00	0.00	E-46
0.000	0.000	0.00	0.00	E-47
0.000	0.000	0.00	0.00	E-48
0.000	0.000	0.00	0.00	E-49
0.000	0.000	0.00	0.00	E-50
0.000	0.000	0.00	0.00	E-51
0.000	0.000	0.00	0.00	E-52
0.000	0.000	0.00	0.00	E-53
0.000	0.000	0.00	0.00	E-54
0.000	0.000	0.00	0.00	E-55
0.000	0.000	0.00	0.00	E-56
0.000	0.000	0.00	0.00	E-57
0.000	0.000	0.00	0.00	E-58
0.000	0.000	0.00	0.00	E-59
0.000	0.000	0.00	0.00	E-60

Planta general

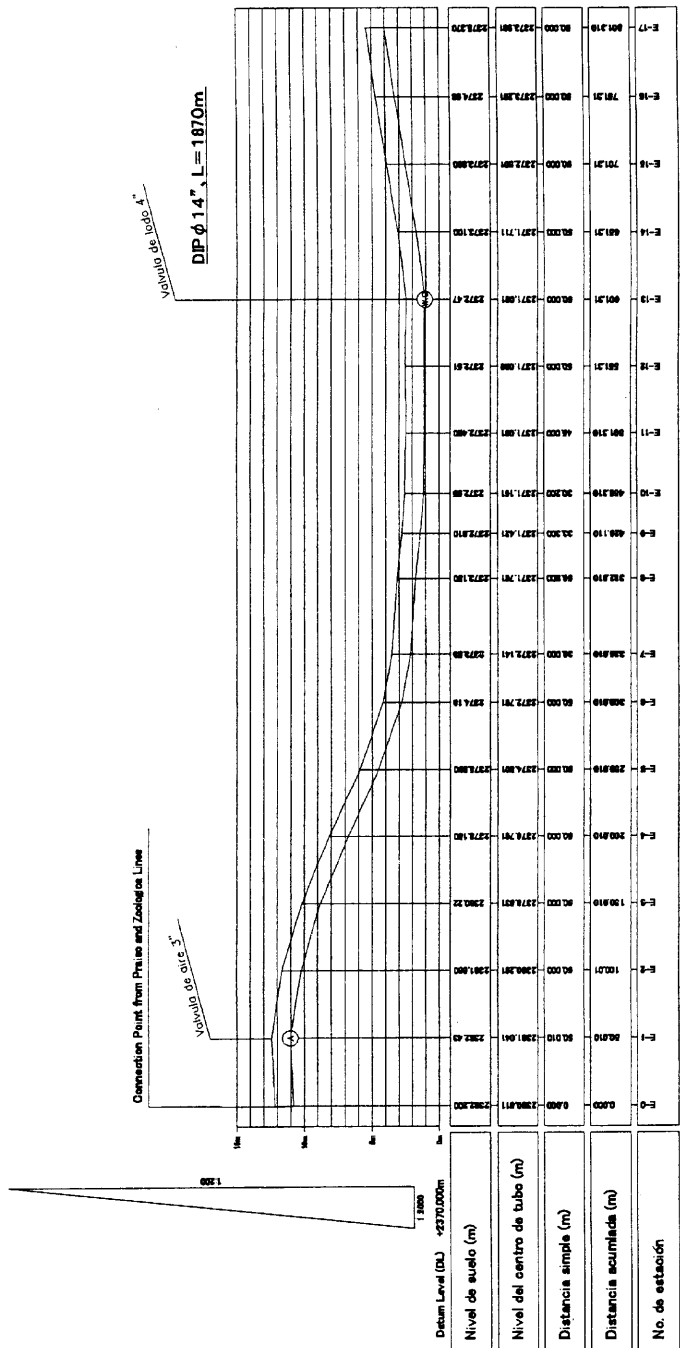
Planta general

REFERENCIAS	
	BASE DE CONCRETO
	CARTA DE BARRIO
	POSTE
	MURO O CERCADO
	VENTANA
	HUERTO Y CASA
	COMPUERTA O BARRERA
	CALLE DE PEDESTRE DE T.P.
	PASEADA

- (A) Vlvula de aire
- (W) Vlvula de todo



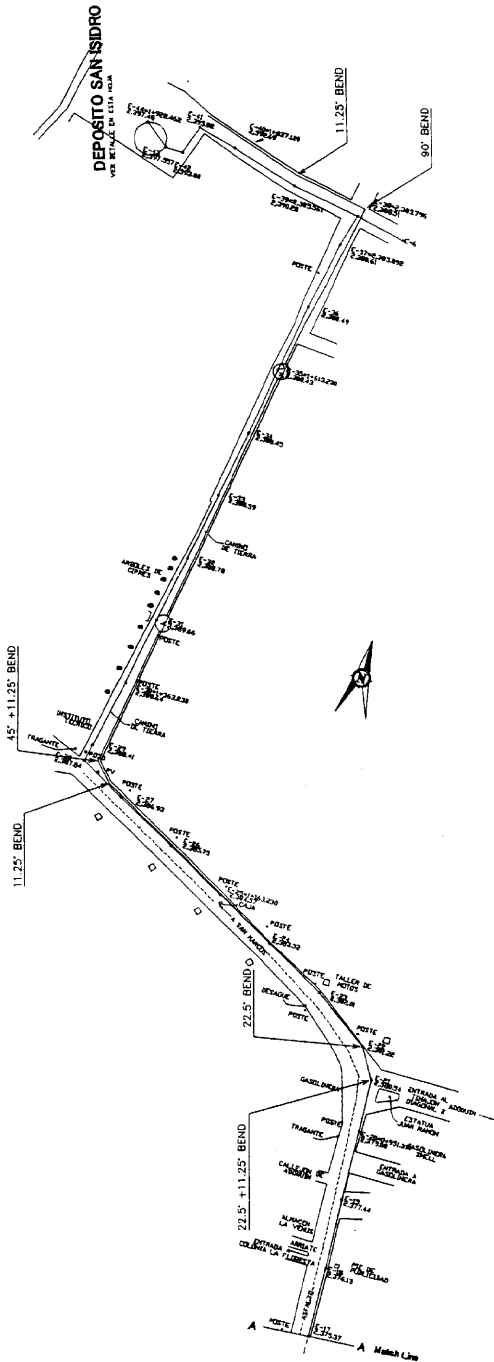
Seccion longitudinal



Planta general

REFERENCIAS

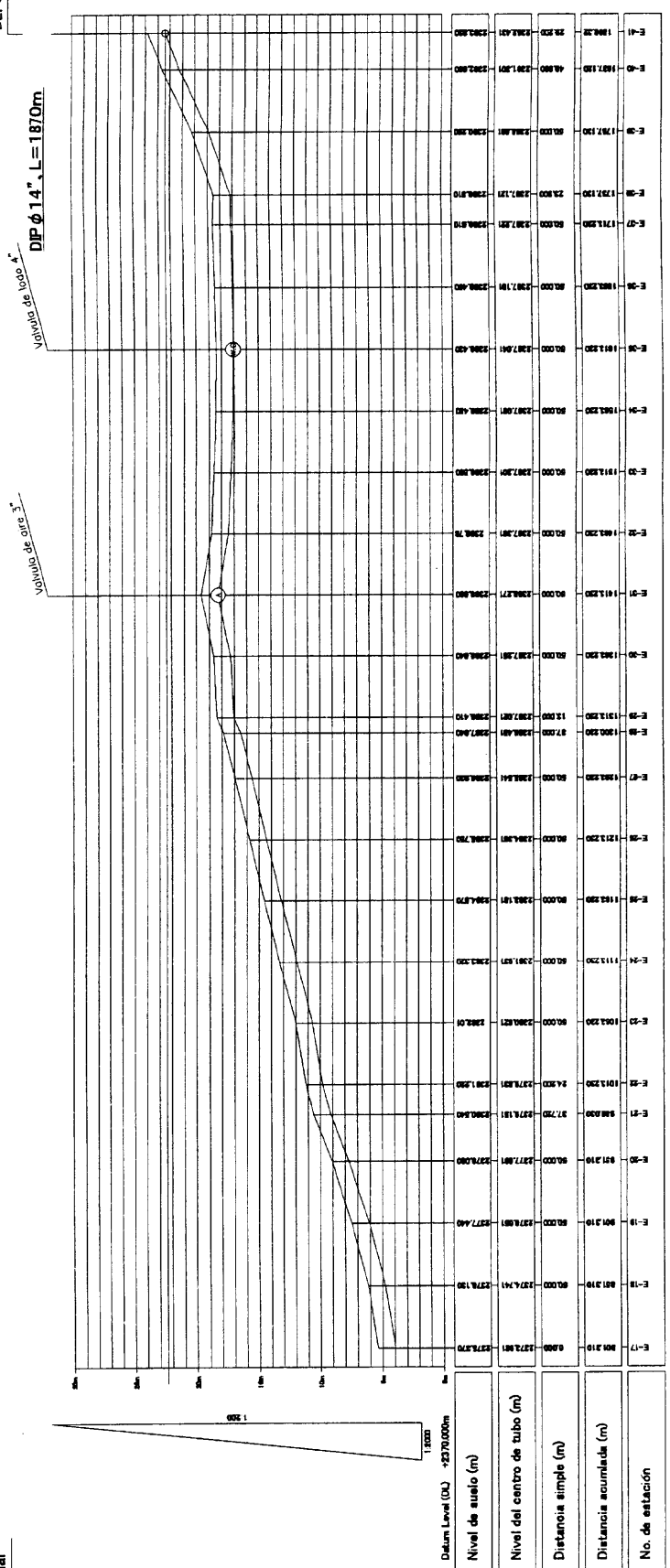
○	BASE DE COBERTO
□	CALLETA DE BOMBO
●	POSTE
○	NO O CUBIERTA
○	VIVIENDA
○	PUED. DE VENTA
○	OP. AIRE O PLABRE
○	CALLE DE RESERVOIR DE TA.
○	PARQUEA.



- Válvula de aire
- Válvula de todo

Sección longitudinal

DEPOSITO SAN ISIDRO

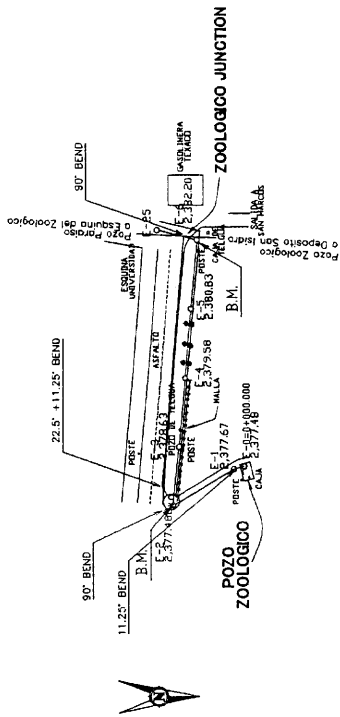


Station	Level (m)	Simple distance (m)	Accumulated distance (m)	No. of station
E-17	2278.370	0.00	0.00	1
E-18	2276.241	80.00	80.00	2
E-19	2277.440	80.00	160.00	3
E-20	2277.891	80.00	240.00	4
E-21	2278.440	80.00	320.00	5
E-22	2278.131	80.00	400.00	6
E-23	2278.800	80.00	480.00	7
E-24	2279.131	80.00	560.00	8
E-25	2279.470	80.00	640.00	9
E-26	2280.790	80.00	720.00	10
E-27	2282.844	80.00	800.00	11
E-28	2284.670	80.00	880.00	12
E-29	2286.470	80.00	960.00	13
E-30	2287.281	80.00	1040.00	14
E-31	2288.000	80.00	1120.00	15
E-32	2288.790	80.00	1200.00	16
E-33	2289.544	80.00	1280.00	17
E-34	2290.250	80.00	1360.00	18
E-35	2290.910	80.00	1440.00	19
E-36	2291.520	80.00	1520.00	20
E-37	2292.090	80.00	1600.00	21
E-38	2292.610	80.00	1680.00	22
E-39	2293.090	80.00	1760.00	23
E-40	2293.520	80.00	1840.00	24
E-41	2293.910	80.00	1920.00	25

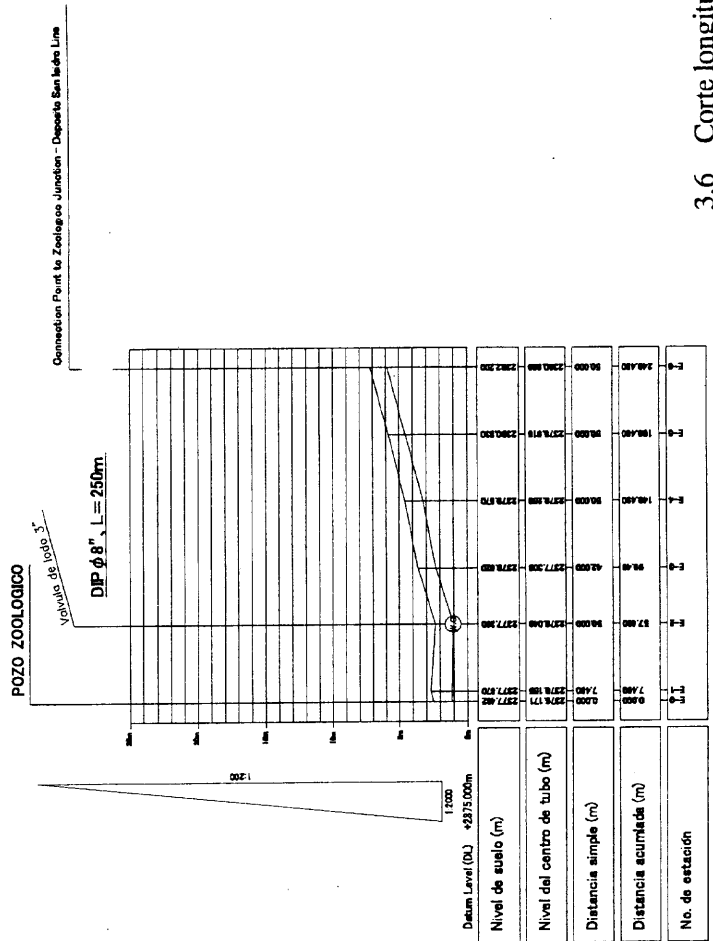
Planta general

REFERENCIAS	
○	BASE DE CONCRETO
□	CANCHA DE BOMBO
●	POSTE
⊠	PRO-O ALUMINIA
⊞	VIGONIA
P.V.O.	POZO DE VISITA
⊞	COPIAS DE UNIDAD
⊞	CABLE DE FERRONTE DE I.T.A.
⊞	PANELA

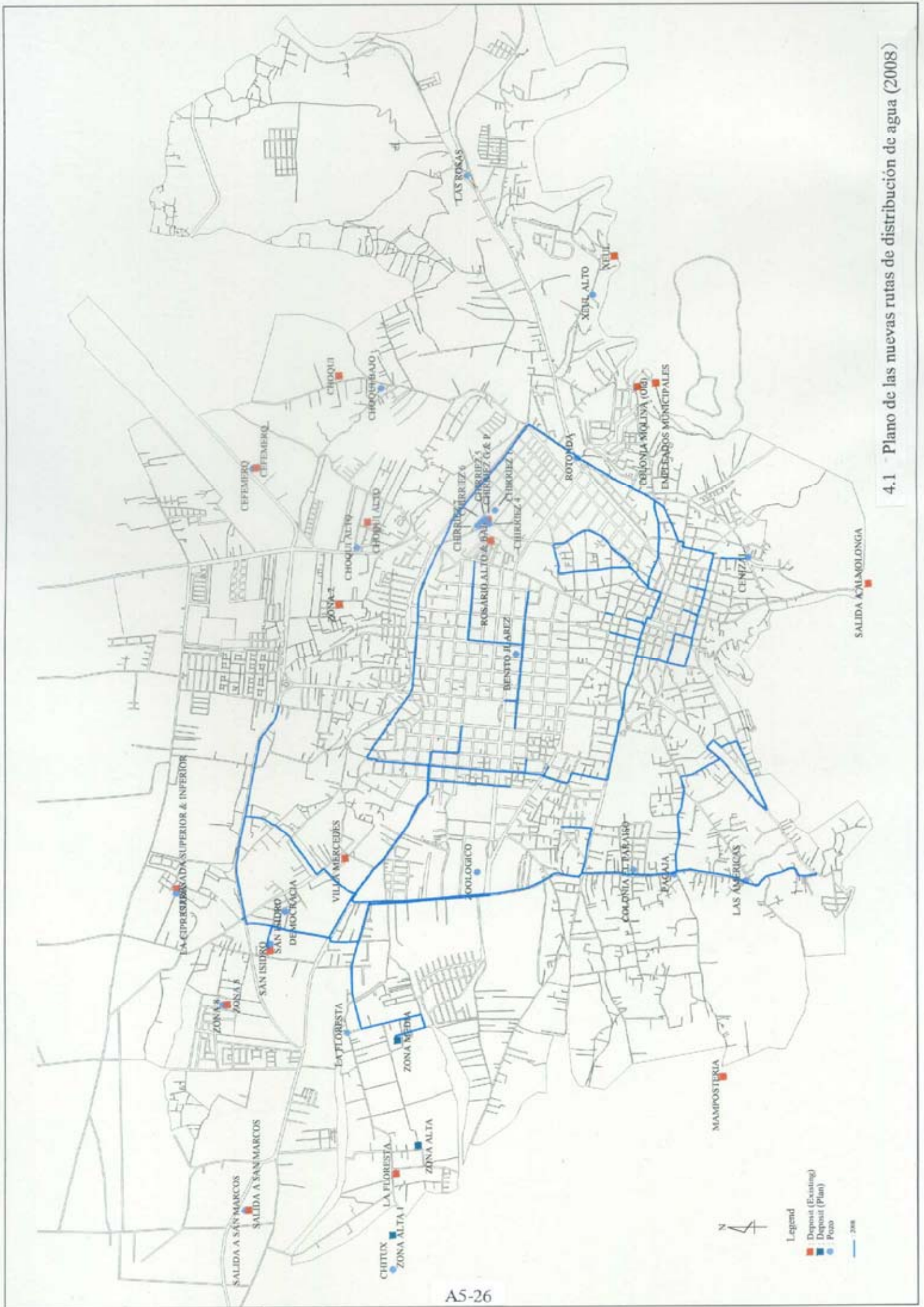
- ⊞ Válvula de aire
- ⊞ Válvula de todo



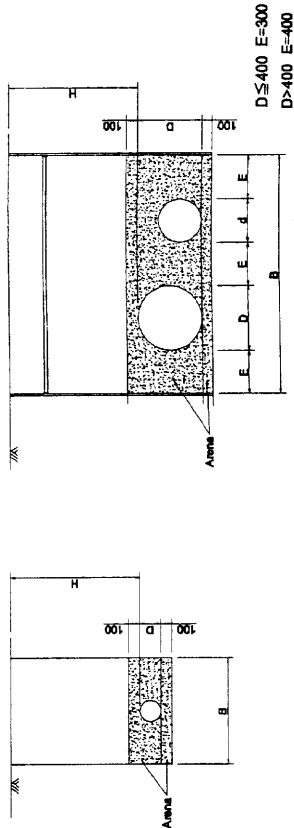
Sección longitudinal



3.6 Corte longitudinal del tubo de impulsión
(Pozo Zoologico - Junction)



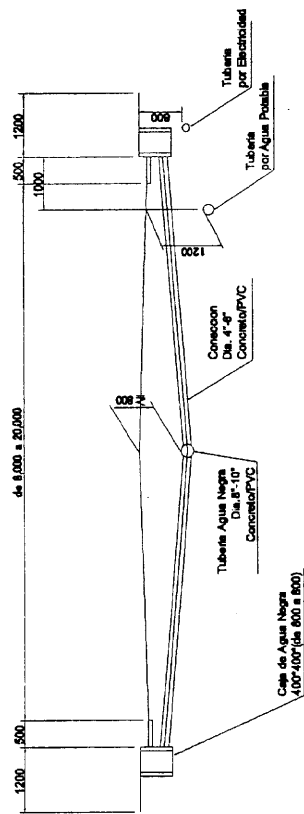
4.1 Plano de las nuevas rutas de distribución de agua (2008)



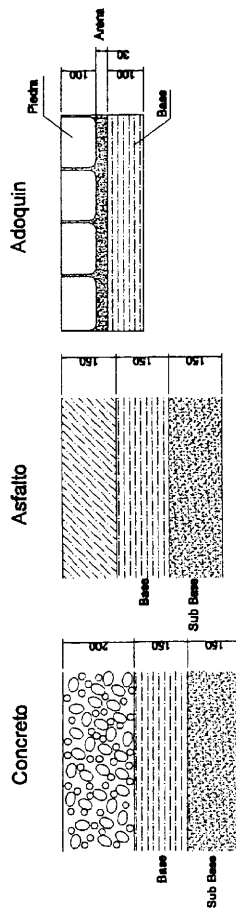
Zanjas con Protección (Escala 1:50)
Para Línea Primera día.400, día.600

D (mm)	H (mm)	B (mm)
100	1200	650
150	1200	700
200	1200	750
250	1200	800
300	1200	850
350	1200	900
400	1200	1000
450	1200	1050
500	1200	1150
600	1200	1300

En caso de D ≤ 300 y Parta de Pavimento Asfalto H es 1.00m.



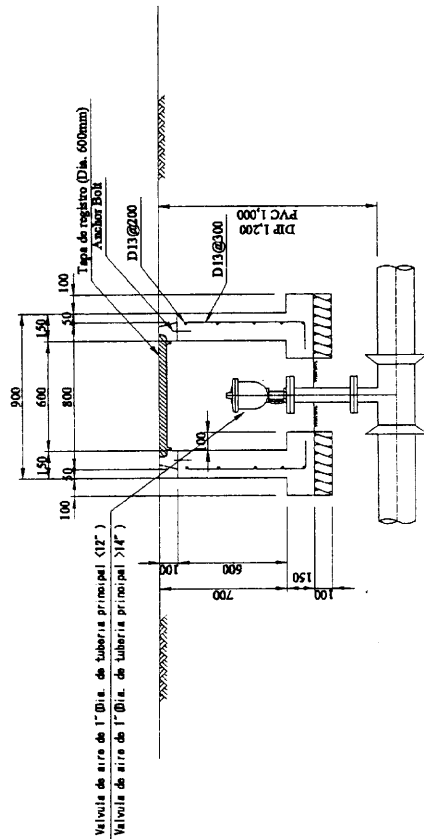
Calle con Trafico (Escala 1:100)



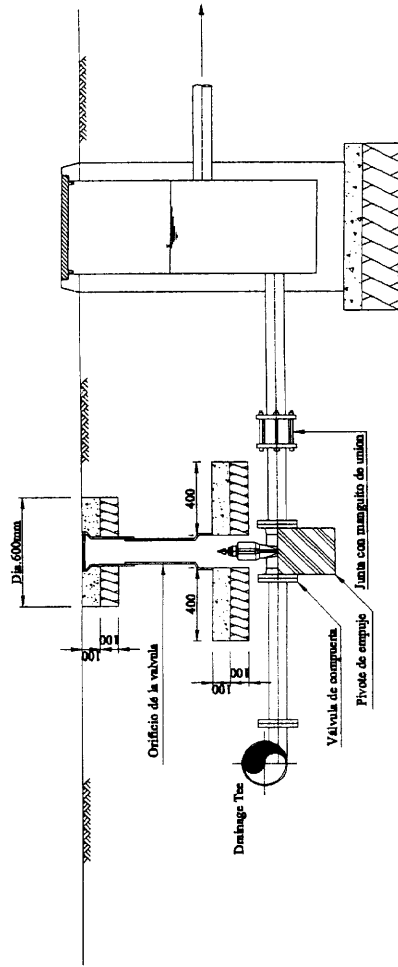
Tipo de Pavimento (Escala 1:150)

5.1 Corte longitudinal estándar de la instalación de tubería de impulsión y distribución

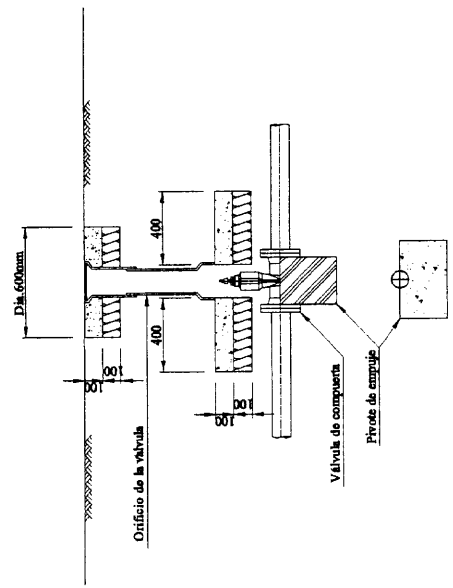
Valvula de aire



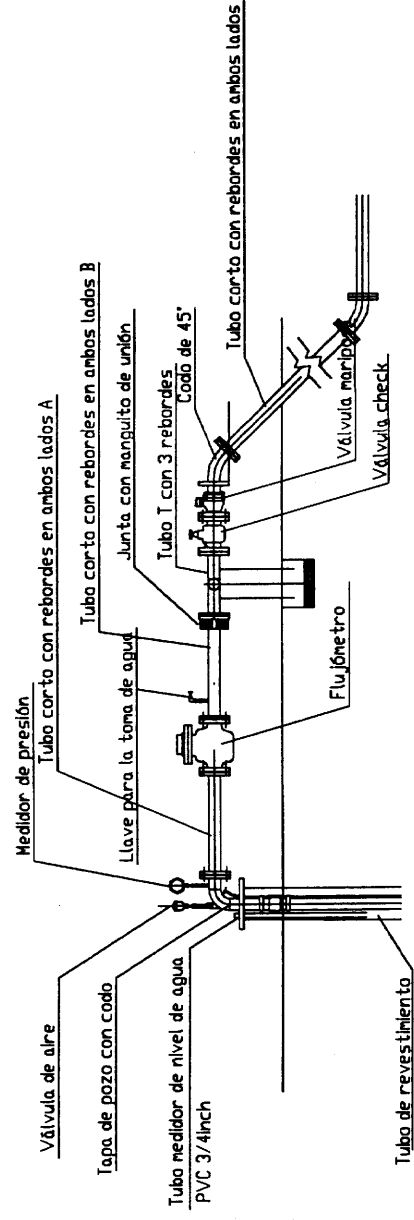
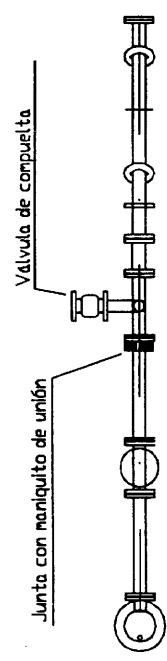
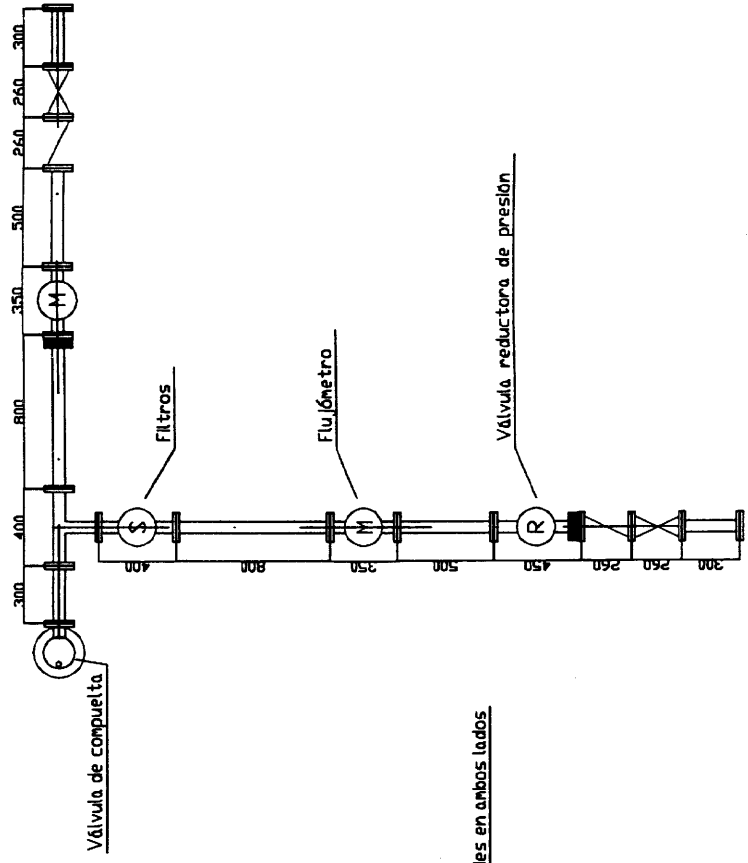
Valvula de lodo



Valvula de compuerta



Díámetro (Pulgada)	Tubería principal	Drenaje y Válvula
24	4	4
20	4	4
18	4	4
16	4	4
14	4	4
12	3	3
10	3	3
8	3	3
6	3	3
4	3	3



Instalación de tubería alrededor de pozos
 4' - San Isidro, Colonia el Paraiso
 5' - Zoológico, Pacaja, Las Americas, La Chipresada

Pozo Pacaja (Instalación de válvula reductora de presión)

6. Instalación de tubería alrededor de pozos