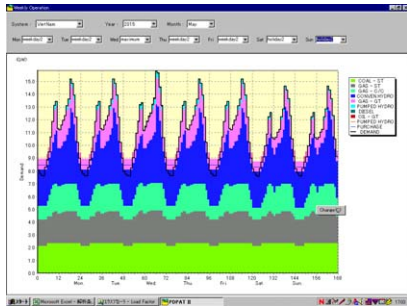


## Results: Weekly Operation Case-2 (with PSPP)



## Results: Annual Costs

PSPP development: approx. 400 MW



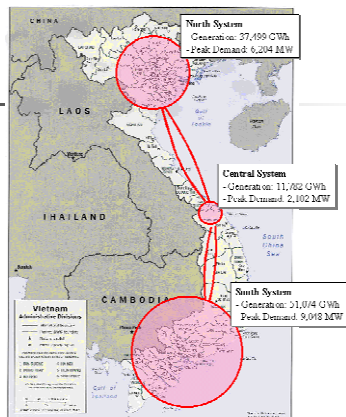
Item	Unit	Case 1	Case 2	Case 3
Saved Cost / yr	Mil. \$	<b>2</b>	<b>25</b>	<b>21</b>

## Implications

- Economic advantages of PSPP are generally confirmed.
- Simulation conditions significantly influence the results of analysis.

## Issue & Countermeasure (1/4)

- Issue #1:  
Regional differences in electricity demand and power sources composition
- **Countermeasure:**  
Separate the domestic system into three regional systems



## Issue & Countermeasure (2/4)

- Issue #2:  
Plans for international electricity exchange
- **Countermeasure:**  
Incorporate international exchange into the simulation model.

