

ATTACHMENT

1. Objective of the Project

The objective of the Project is to upgrade and extend the existing facilities of the Samoa Polytechnic (hereinafter referred to as "SP") through expansion and refurbishment of the school buildings and provision of educational equipment.

2. Project Site

The site of the Project is Vaivase Campus of Samoa Polytechnic, sharing its boundary with the National University of Samoa (hereinafter referred to as "NUS") at its southern end, located three and a half kilometers from the central business district of Apia.

3. Responsible and Implementing Agency

3-1 The Responsible Agency is the Ministry of Education, Sports and Culture

3-2 The Implementing Agency is SP.

3-3 The organization chart of the Ministry of Education and SP as attached as Annex-1 and Annex- 2.

4. Items requested by the Government of Samoa

After discussions with the Team, the list of requested facilities and equipment with priority as attached in Annex-3, and layout plan of each facility in Annex- 4 were finally submitted by the Samoan side. JICA will assess the appropriateness of the request and will recommend to the Government of Japan for approval. The final components of the Japan's Grant Aid, however, will be decided after further studies.

5. Japan's Grand Aid Scheme

5-1 The Samoan side has understood the Japan's Grant Aid Scheme and the necessary measures to be taken by the Government of Samoa as explained by the Team and described in Annex- 5.

5-2 The Samoan side will take the necessary measures described in Annex- 6 for smooth implementation of the Project on condition that the Grant Aid by the Government of Japan is extended to the Project.

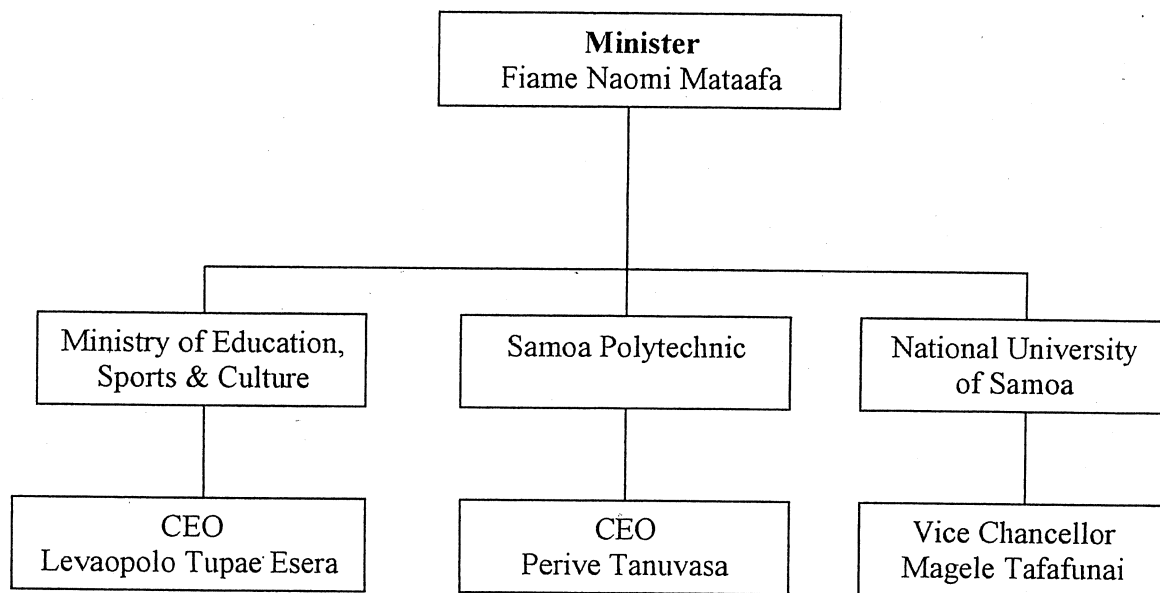
6. Schedule of the Study

- 6-1 The consultants will proceed to further studies in Samoa until 16th December, 2003.
- 6-2 JICA will prepare the draft report in English and dispatch a mission in order to explain its contents around February, 2004.
- 6-3 In case that the contents of the report is accepted in principle by the Government of Samoa, JICA will complete the final report and send it to the Government of Samoa by the end of March, 2004.

7. Other relevant issues

- 7-1 The Team explained that the items for the Project were to strengthen a function of SP, and the Samoan side agreed.
- 7-2 The Samoan side requested that the common facilities, according to the priority list as attached in Annex-3, would be considered based on the merger plan of SP and NUS.
The Samoan side also strongly requested to the Japanese side to note that in the case of any major part/s of this Project be declined due to the limitation of the budget available, such part of the Project should be treated as a separate Project under the Japanese Grant Aid with the top priority and urgency and to be implemented immediately after this Project.
- 7-3 The Samoan side explained the contents of merger plan of SP and NUS to the Team, and the Team confirmed that the Samoan side would submit the more detailed plan by 8th December, 2003.
- 7-4 The Samoan side agreed to implement an environmental impact assessment, and to submit the result to JICA Samoa Office by the end of March, 2004.
- 7-5 The Team requested the Samoan side to reply to all questionnaires and to give relevant information requested by the Team, by 8th December, 2003.

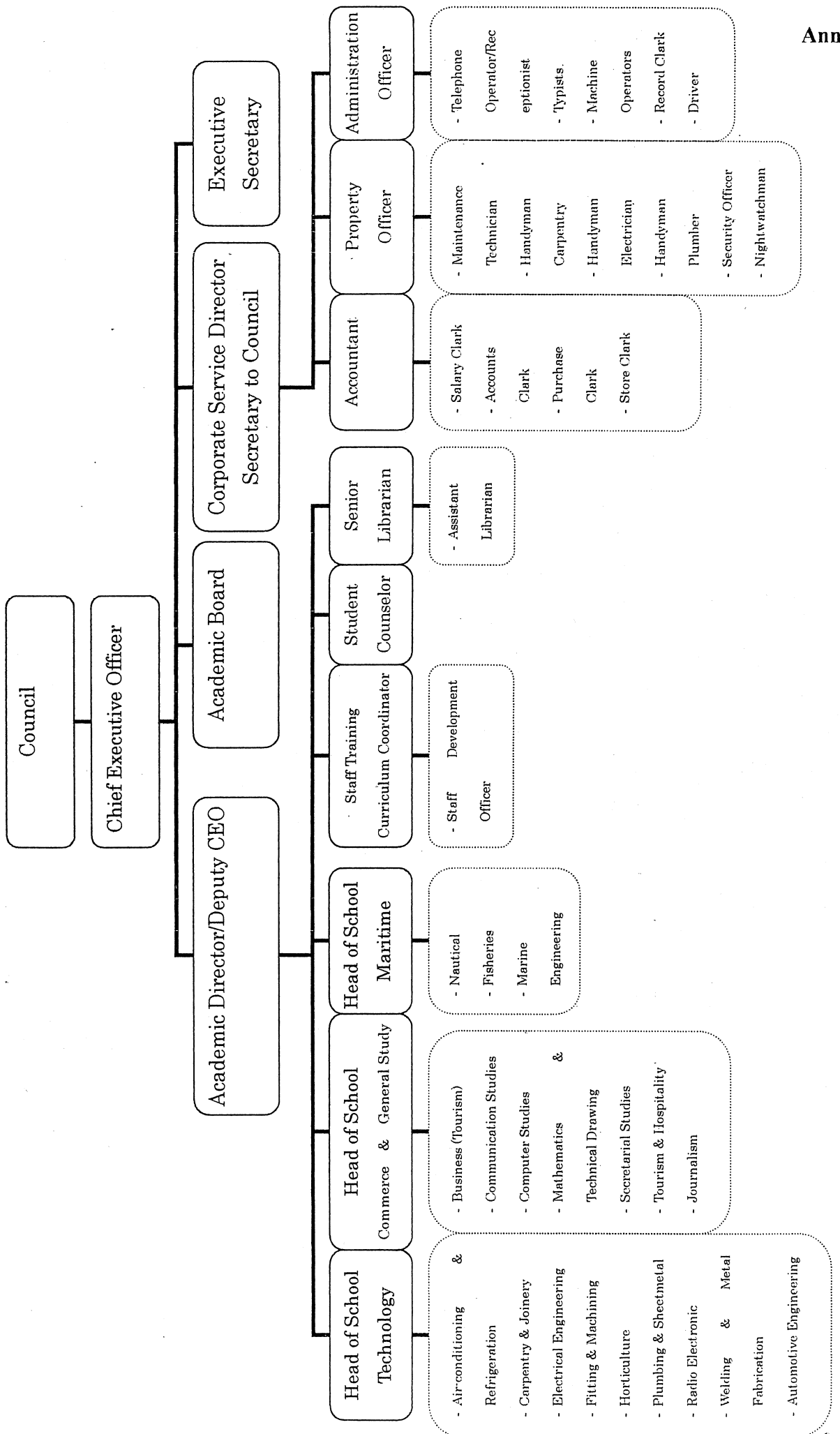
Organization Chart of Ministry of Education, Sports & Culture



Handwritten mark

Handwritten mark

Samoa Polytechnic Organization Chart



ITEMS REQUESTED BY THE GOVERNMENT OF SAMOA

Requested Facilities with priority

1. Facilities for Samoa Polytechnic (SP)

- School of Technology
(Workshop, Classroom, Head & Lecturer's Office, Locker Room, Shower & Toilet)
 - Automotive with 3 x 25 seated classroom
 - Carpentry & Joinery with 2 x 25 seated classroom
 - Electrical with 2 x 25 seated classroom
 - Fitting & Machining 2 x 20 seated classroom
 - Horticulture with 300m² green house with sprinkler system
 - Plumbing & Sheet Metal with 2 x 20 seated classroom
 - Radio & Electronics 2 x 20 seated classroom with 20 seated Computer Lab
 - Refrigeration & Air Conditioning with 2 x 20 seated classroom
 - Welding & Metal Fabrication with 20 seated classroom
 - Fabric Design Sewing (New Program)
 - CAD (New Program)
 - Mechanical Engineering (New Program)
 - Civil Engineering (New Program)
- School of Commerce & General Studies
 - Facilities for Department Heads & Lecturer (for 8 Heads & 17 Lecturer)
 - Common Facility
 - Material Making
 - Shared Equipment Room
 - Computer Study Department with 3 x 20 seated Computer Lab (1 for student study purpose)
 - Secretarial Department with 25 seated Typewriter Lab, 2 x 30 seated classroom
 - Business Department with 2 x 30 seated classroom
 - Mathematics Department with 2 x 25 seated drawing room
 - Journalism Department with 2 x 30 seated classroom
 - Communication Department with 20 booth+10 seated Language Lab, 3 x 30 seated classroom, 150 seated lecture theater
 - Tourism & Hospitality with 4 x 30 seated classroom, Training for laundry, hotel accommodation & reception, bar and café, kitchen facilities
 - Media Arts (New Program)
 - Arts & Culture (New Program)
 - Sports Studies (New Program)

2. Facilities for the merger

1) Administration Building

Objectives: In order to control efficiently the function of NUS and SP's administration.

Function: Administration staff of NUS and SP to be unified in this facility.

2) ICTC (Information & Communication Technology Center)

Objectives: Integration of information system of NUS and SP to optimize the flow and control the information of whole campus.

Function: Information service and maintenance of computer hardware and software as well as network within the campus.

3) Library Resource Center

Objective: Expansion of library space and upgrading of its function of both NUS and SP by unification of the facilities.

Function: Not only serving as an archive but also providing modern information media such as audiovisuals and internet search system.

4) Multipurpose Hall

Objectives: This building will help to serve the core function of the new institution by providing space for educational and community activities.

Function: This facility will provide the ideal venue for such as; sports courses, performing arts, culture performance, student meeting, conference center, exhibition hall and graduation.

5) Student/Conference Accommodation

Objectives: Offering the opportunities for student from remote areas.

Function: Student dwelling, meeting place.

SCHOOL OF TECHNOLOGY

1. Auto Engineering

No.	Items	Q'ty	Priority	Remarks
1	Floor jack (hydraulic 3ton)	2	A	Tool
2	Clipping board	10	A	
3	Side slip tester	1	A	Vehicle Testing Equipment
4	Brake Speedo Combination tester	1	A	Ditto
5	Head Light Tester	1	A	Ditto
6	Battery charger	1	A	
7	Bench drill	1	A	Training Equipment
8	Injector Tester	1	A	Testing Tool
9	Fuel pressure gauge set	1	A	Ditto
10	Vacuum pump tester (Ref.:MytyVac)	2	A	Ditto
11	Engine analyzer	2	A	Ditto
12	Oil pressure gauge (engine)	2	A	Ditto
13	Oil pressure gauge (auto transmission)	2	A	Ditto
14	Hydraulic press	1	A	
15	Air compressor (mobile type)	1	A	
16	Bench vice	10	A	
17	Numbering punches	2	A	
18	Separate Type Engine Bed (for engine trainin	1	A	Training Equipment
19	Automatic Transmission Cut Model	1	A	Demonstration Equipment
20	Starter Motor Cut Model	2	A	Ditto
21	Distributor Cut Model	2	A	Ditto
22	Alternator Cut Model	2	A	Ditto
23	Chassis Cut Model	1	A	Ditto
24	4 Speed Manual T/M Functional Model	1	A	Ditto
25	Torque Combater Functional Model	1	A	Ditto
26	Deferential (ASR, ASD) Mechanism Model	1	A	Ditto
27	Training vehicle's components	5	B	Training material
28	Micro computer with UPS	1	B	Department head
29	Steam cleaner (Pressured hot water washer)	1	B	
30	Compression gauge (petrol)	5	B	Training Equipment
31	Timing Light	5	B	Ditto
32	Transformer,230/100V	5	B	Pore splay Equipment
33	Mechanic Puller set	1	B	Tool
34	Flaring tool set	2	B	Ditto
35	Parts cleaner	2	B	
36	Bench grinder	1	B	
37	Oil filter wrench set	1	B	Tool
38	Clutch aligning tool	5	B	Ditto
39	Tie rod end lifter	2	B	Ditto
40	Torque Wrench (Plane type)	5	B	Ditto
41	Torque Wrench (Preset, Dial, Digital)	1	B	Ditto
42	Venire Caliper (0~200mm)	20	B	Ditto
43	Hoist(4post)	1	C	
44	Valve refacer	1	C	

45	Boring bar set	1	C	
46	Cylinder honing set	1	C	
47	TV/Video set	2	C	
48	Cylinder bore gauge	5	C	
49	Valve spring tester	1	C	
50	Conrad aligner	1	C	
51	Distributor tester	1	C	
52	Spark plug & battery tester	2	C	
53	Hand drill	5	C	
54	Hand grinder	4	C	
55	Vacuum cleaner	2	C	
56	Overhead projector (OHP)	3	C	
57	Transmission jack (high lift type)	4	C	
58	Transmission jack (low lift type)	4	C	
59	Oil bucket pump	2	C	
60	Grease oil pump	2	C	
61	Tap & die set	5	C	
62	Chain block (hoist)	1	C	
63	Engineer's files	10	C	
64	Chisel & punches	20	C	
65	Oil seal bearing puller	5	C	
66	Hollow punches	5	C	
Heavy Duty Vehicle Equipment				
1	Injection nozzle tester	1	A	Training Equipment
2	Compression gauge (diesel)	2	A	Ditto
3	Hydraulic System Model (complete)	1	A	Training Equipment
4	Pneumatic System Model (complete)	1	A	Ditto
5	Wheel Dolly	1	A	Ditto
6	Rigid Rack (Height 1m)	2	A	Tool
7	Floor Jack (Air Jack 10ton)	1	A	Tool
8	Diesel engine model (heavy duty)	1	C	Demonstration
9	Diesel pump testing machine	1	C	Training Equipment
Auto Electrical Equipment				
1	Multimeter (analog)	10	A	
2	Multimeter (digital)	10	A	
3	Auto electrical/electronic fault diagnoses	1	A	
4	Electronic Brock System	10	A	Training Equipment
Panel beating & Spray Painting				
1	Body repair Tool set	10	A	
2	Body fender tool set	10	A	
3	Painting Spray guns	10	A	
4	Metal cutting snips	10	A	
5	Body frame repair system	1	A	
6	Body puller Set	1	A	
7	Hydraulic Porto Power Set	2	A	
8	Vice Grip Wrench Set	3	A	
9	Hand riveter tool kit	3	A	
10	Air tip cutter	3	A	

Jan

11	Paint Spray Gun Cleaner	3	A	
12	Paint cup	3	A	
13	Air compressor	1	A	
14	Jig saw	2	A	
15	Spot Tool (Spot welding separator)	3	B	
16	Spot Welder	1	B	
17	MIG/MAG Welder	1	B	
18	Oxy.-Acetylene Welding /Cutting Torch Set	2	B	
19	Air Chisel	3	B	
20	Air Belt Sander	3	B	
21	Electric Grinder (100mm)	3	B	
22	Electric Polisher (200mm)	3	B	
23	Double Action Sander	3	B	

2. Civil Engineering

Carpentry & Joinery Equipment

No.	Items	Q'ty	Priority	Remarks
1	Drop (miter) saw, 14" (for wood)	2	A	Electric tool
2	Disk sander	3	A	Ditto
3	Sander Polisher	3	A	Ditto
4	Angle grinder (size:9")	2	A	Ditto
5	4Angle grinder (size:4")	3	A	Ditto
6	Circular saw, (9-1/4")	2	A	Ditto
7	Jigsaw,	3	A	Ditto
8	Plunger router (12mm(1/2"))	2	A	Ditto
9	Belt sander (100×610)	3	A	Ditto
10	Cordless drill	3	A	Ditto
11	Variable speed electric drilling machine	3	A	Ditto
12	Bench grinder, (205mm)	2	A	Electric tool
13	Pin gun (Air Rivet gun)	3	A	Air tool
14	Industrial vacuum cleaner	1	A	Cleaning the workshop
15	Angle drill	4	A	Electric tool
16	Wood lathe (Table lathe)	5	A	Ditto
17	Spindle molder	1	A	Ditto
18	Thicknezzzer (20" or 24")	1	A	Ditto
19	Surface planner	1	A	Ditto
20	Drum sander, (15 to 120mm diameter)	2	A	Ditto
21	Rip saw, (90-40 degree tilt setting)	1	A	Ditto
22	Bench drilling machine	1	A	Ditto
23	Air Compressor	1	A	Electric machine
24	Measuring tape (convex lure 5m)	20	A	Hand tool
25	Claw hammer (22 ounce)	20	A	Ditto
26	Hand saw (rip, cross cut, panel saw)	20	A	Ditto
27	Combination square	10	A	Ditto
28	Drill bit set (for wood)	5	A	
29	Router bit set	5	A	
30	Spindle bit set	3	A	

31	Joiner plane	10	A	Hand tool
32	Jack plane	10	B	Ditto
33	Carving tools set	3	B	Ditto
34	Wood lathe tools	5	B	Ditto
35	Allen key set	3	B	Ditto
36	6"wide spade	7	B	Ditto
37	6"wide trenching shovel	7	B	Ditto
38	30m tape measure	7	C	Ditto
39	Spray gun with fitting set	7	C	
Block work , Plastering & Tiling Equipment				
40	12"concrete steel frost	7	A	Hand tool
41	Magnesium finishing float	4	A	Ditto
42	Curving edging tools (exterior)	5	A	Ditto
43	Oval mouth shovel	6	A	Ditto
44	Masonry saw	2	A	Electric tool
45	Hammer drill, (2 speed, Max. 13mm)	4	A	Ditto
46	Demolition hammer drill (heavy-duty)	3	A	Ditto
47	Chisel of different size	1	A	Hand tool
48	Dumpy level set	2	A	Ditto
49	Pinch bar	3	A	Ditto
50	Mobile Scaffolding	2	A	Ditto
51	Internal right angle trowel	3	A	Ditto
52	Gibraltar board joining trowel	4	A	Ditto
53	2'-0" Metal concreting trowel	5	B	Ditto
54	Wheel barrows	5	B	
55	Tile cutter	1	B	Electric tool
Aluminum Joinery Equipment				
56	Metal Cutter (bench type)	1	A	Electric tool
57	Aluminum welding machines	5	A	
58	Sash cramp, 7"	20	A	tool
59	Corner cramp,	20	A	tool

3. Electrical Engineering

No.	Items	Q'ty	Priority	Remarks
1	Cable meter (sample brand :Fluke lan)	2	A	Tester
2	Analog Multi meter	15	A	Ditto
3	Digital meter	15	A	Ditto
4	Manikin (for first Aid CPR)	2	A	
5	Oscilloscope	4	A	Training Equipment
6	DC power supply	4	A	
7	Riveting Gun	4	A	Tool
8	1.5KVA DC generator	1	A	
9	5KVA AC generator	1	A	
10	Motor rewinding machine	1	A	
11	Bearing puller set	2	A	
12	Multi-system TV monitor set	1	A	Class room
13	Battery drilling machine	4	A	
14	Electric Hammer drill	4	A	