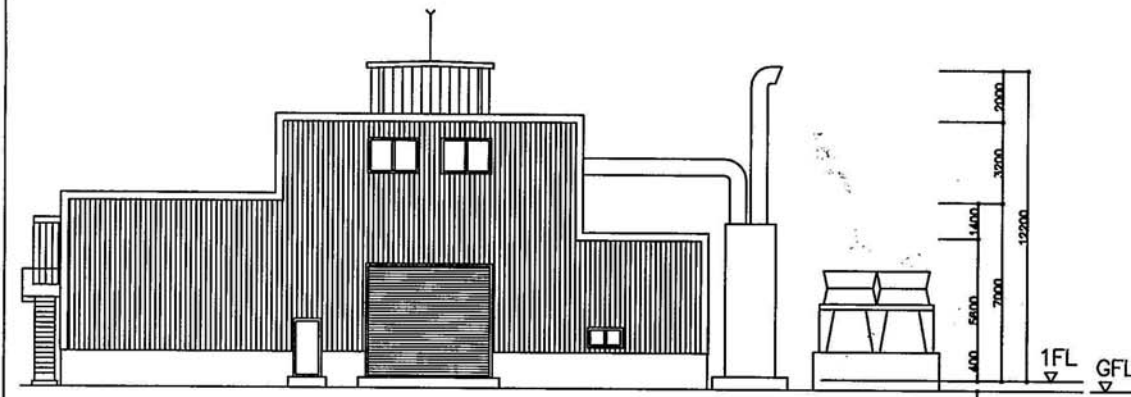
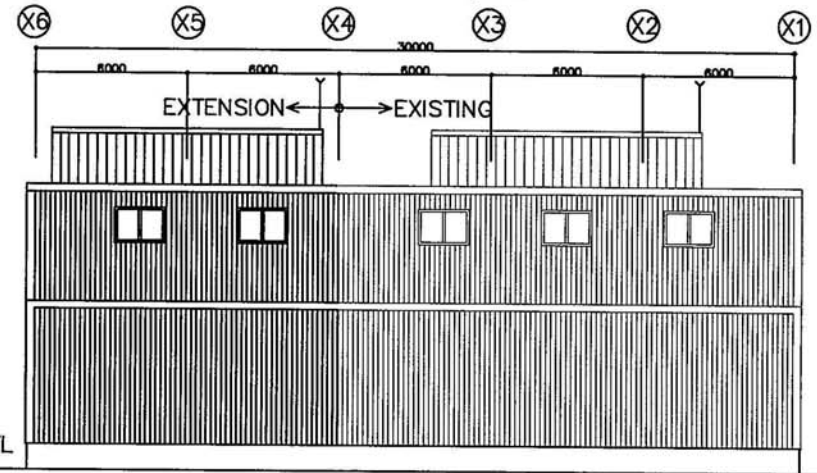


西立面图 1/200
WEST ELEVATION 1/200

南立面图 1/200
SOUTH ELEVATION 1/200

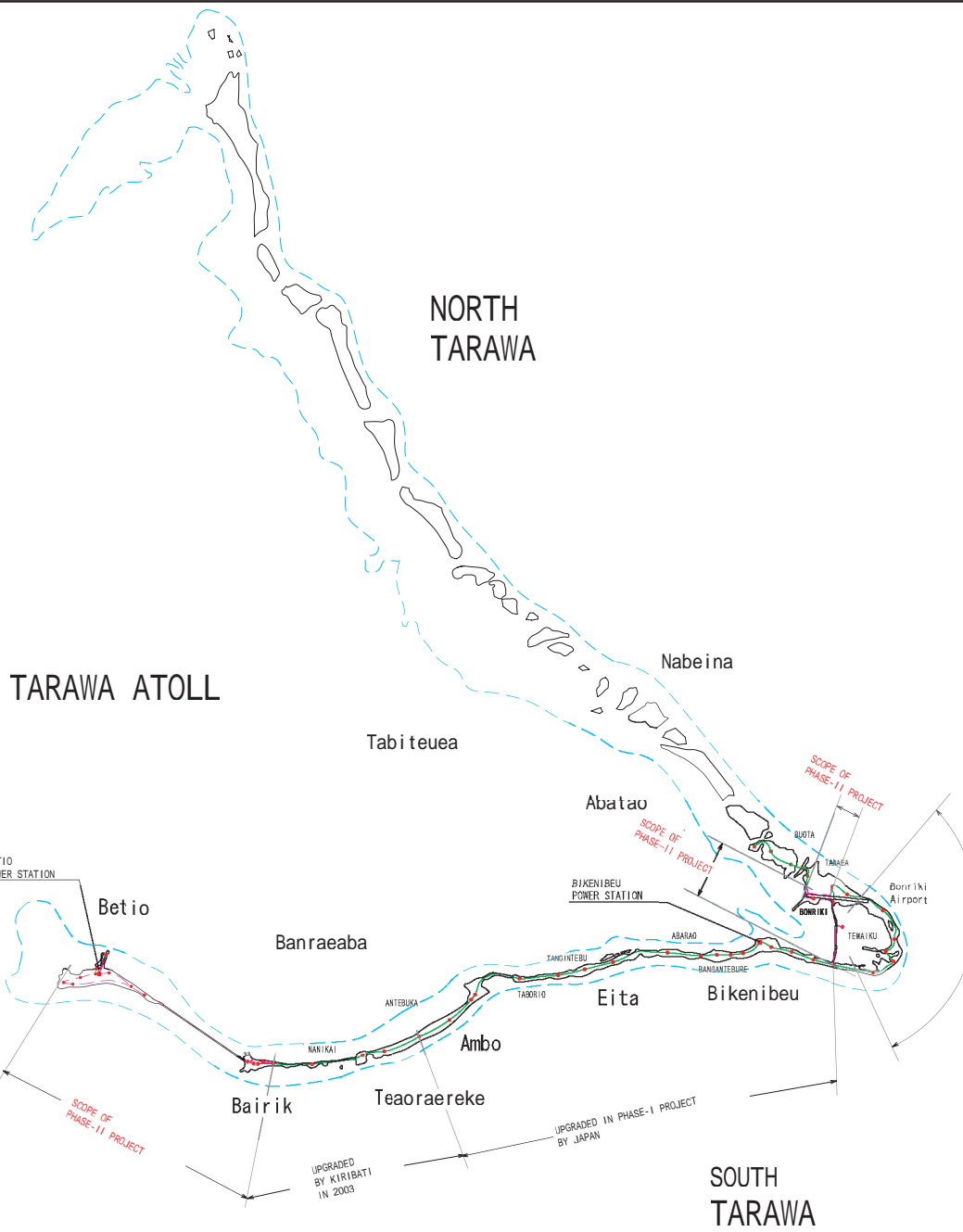


東立面图 1/200
EAST ELEVATION 1/200



北立面图 1/200
NORTH ELEVATION 1/200

Title	発電所建屋立面图 ELEVATION OF POWERHOUSE	DWG. No.	TB-A203
-------	-------------------------------------	----------	---------

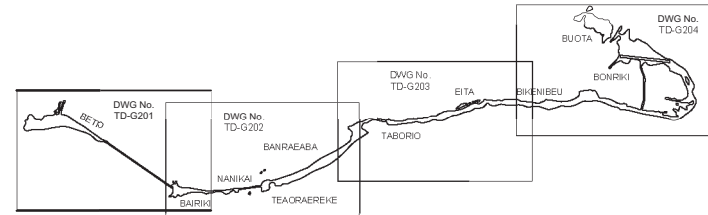
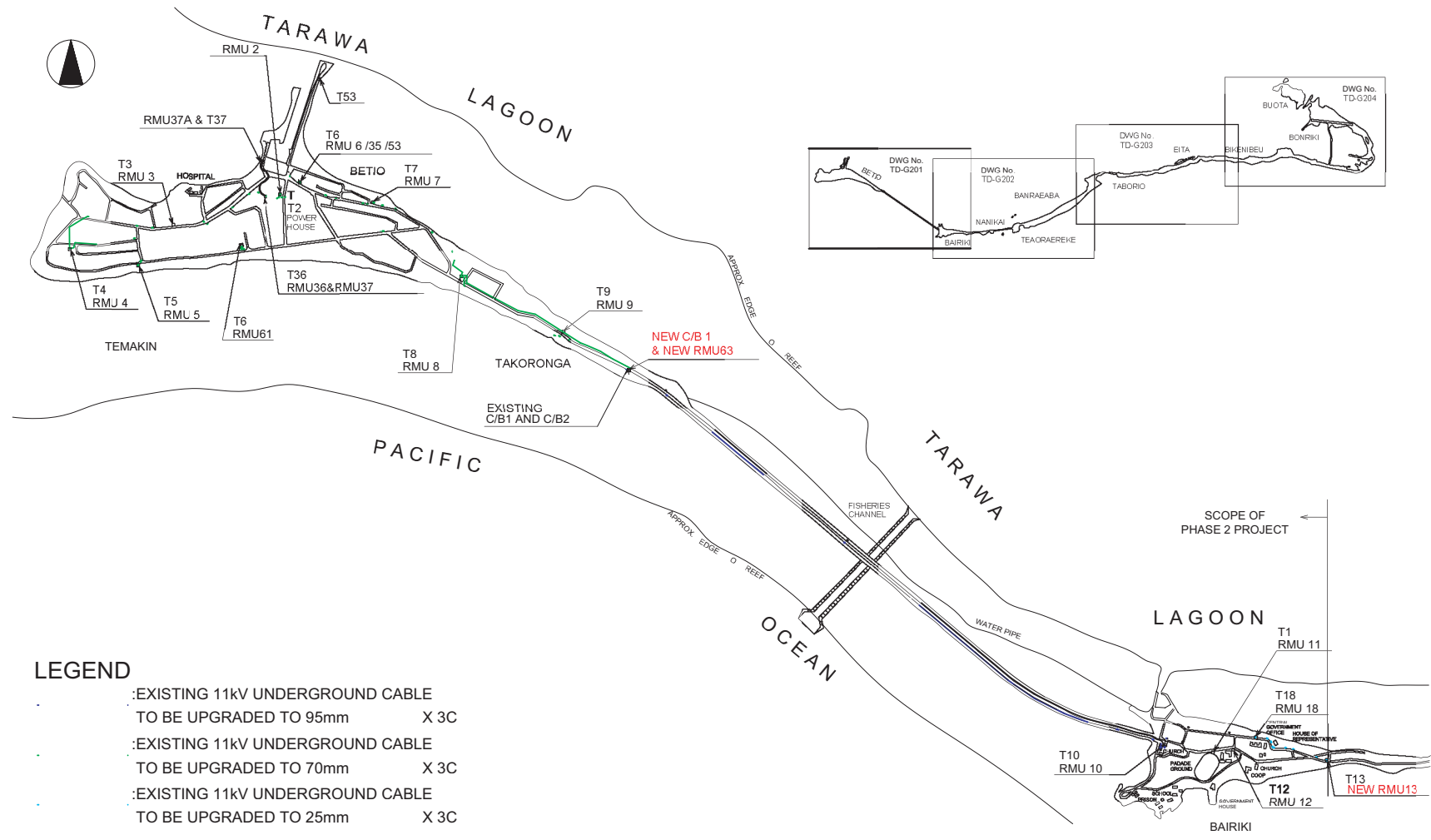


REFERENCE DRAWINGS

DWG. NO	TITLE
1. TD-201	11kV DISTRIBUTION SYSTEM (1/4) BETIO-BAIRIKI AREA
2. TD-202	11kV DISTRIBUTION SYSTEM (2/4) BAIRIKI-AMBO AREA
3. TD-203	11kV DISTRIBUTION SYSTEM (3/4) AMBO-BIKENIBEU AREA
4. TD-204	11kV DISTRIBUTION SYSTEM (4/4) BIKENIBEU-BUOTA AREA

UPGRADED IN PHASE-I PROJECT BY JAPAN

Title 11kV配電ルート図：タラワ全地区 11kV DISTRIBUTION ROUTE MAP IN TARAWA	DWG. No
	TD-G200



LEGEND

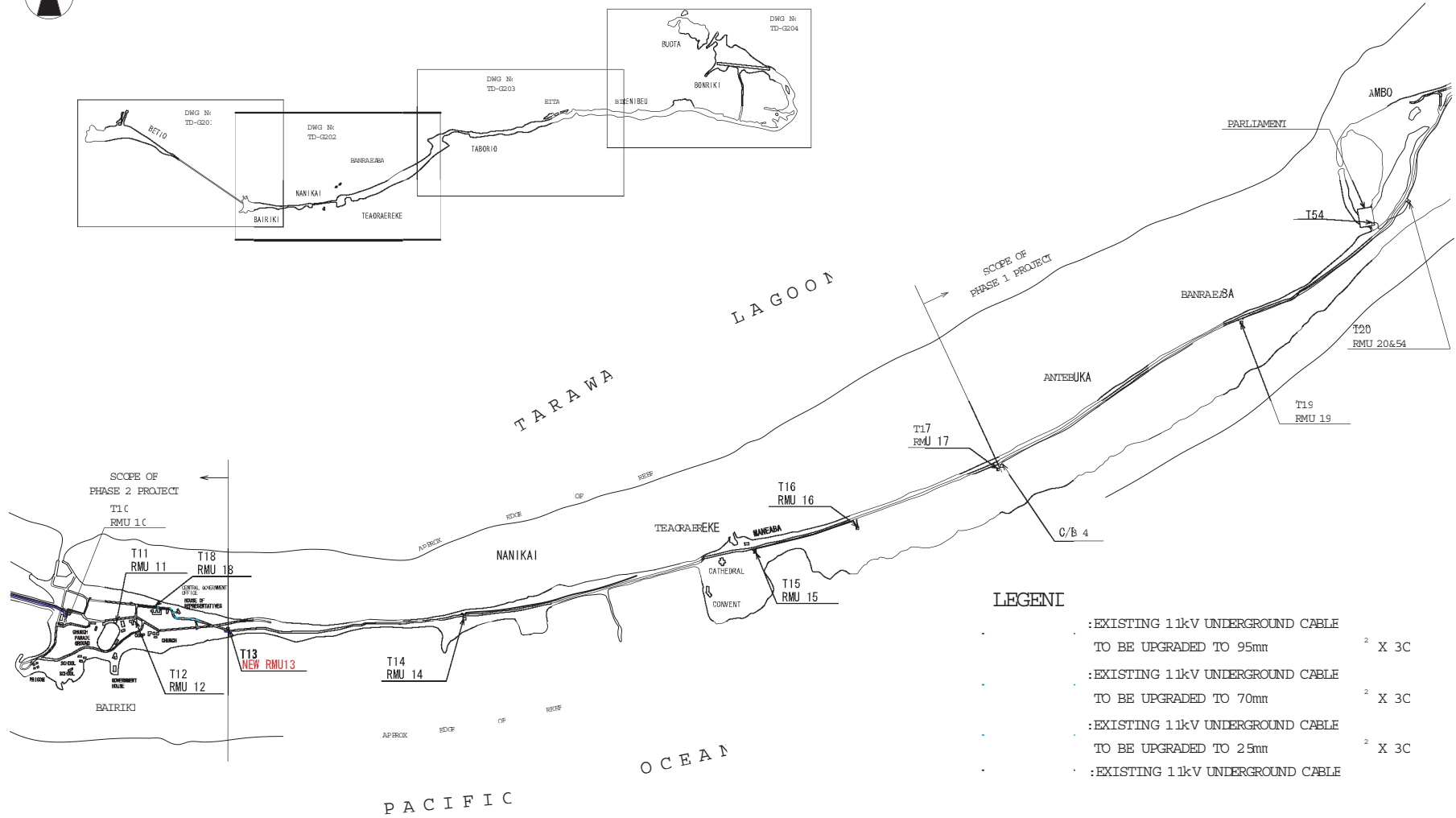
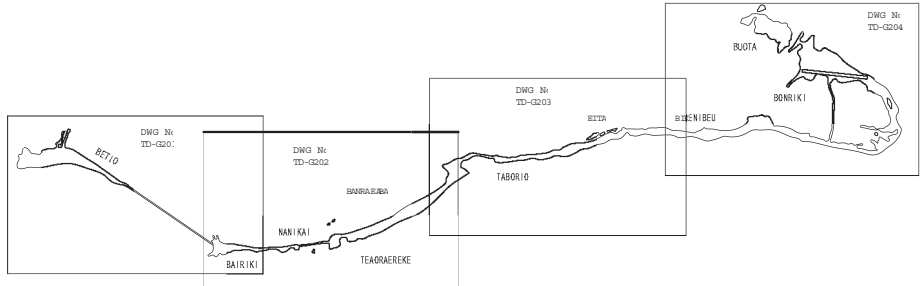
- : EXISTING 11kV UNDERGROUND CABLE TO BE UPGRADED TO 95mm X 3C
- : EXISTING 11kV UNDERGROUND CABLE TO BE UPGRADED TO 70mm X 3C
- : EXISTING 11kV UNDERGROUND CABLE TO BE UPGRADED TO 25mm X 3C

REMARKS

1. New C/B1 and RMU63 shall be located East side of Existing C/B1 and C/B2.
2. PUB shall provide house for new C/B1 and RMU63.
3. New RMU13 shall be located inside of the existing fence.



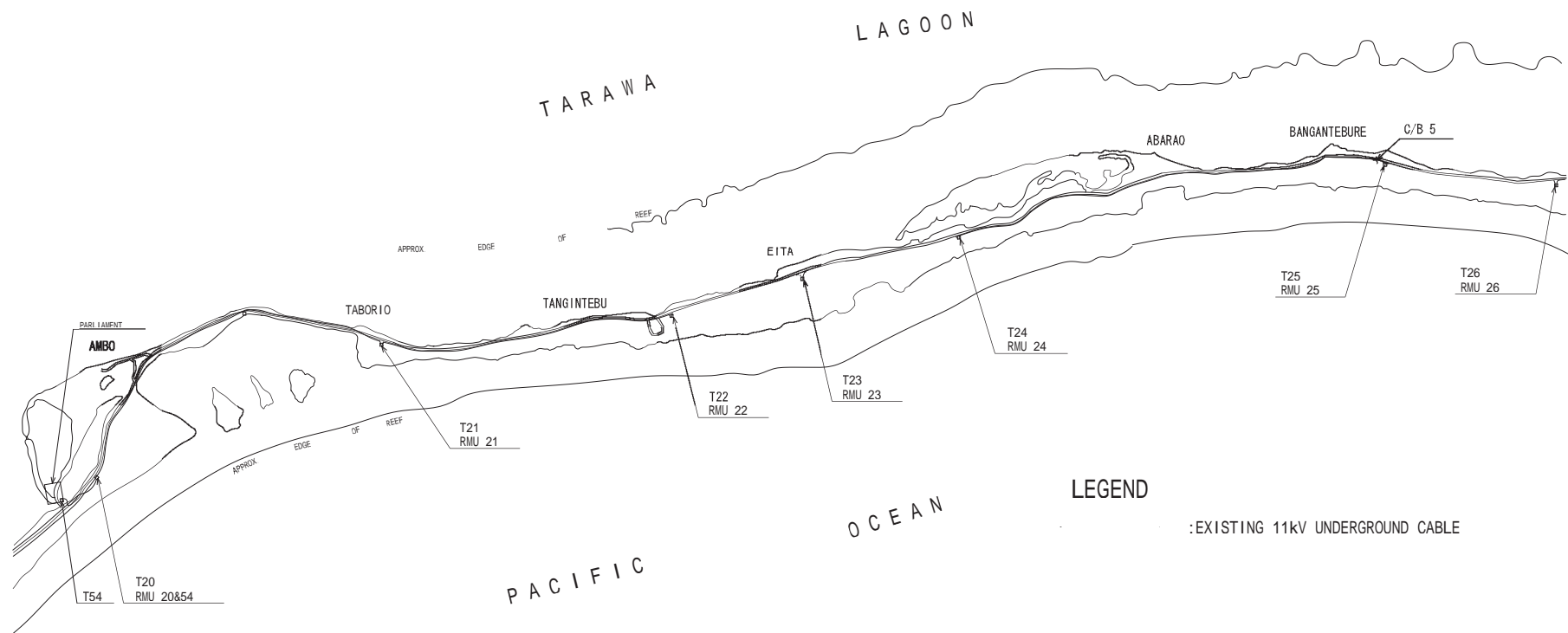
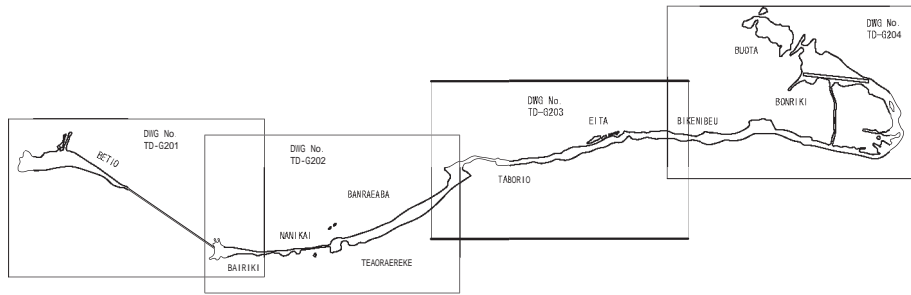
<p>Title 11kV 配電ルート図：ベシオーバイリキ地区 11kV DISTRIBUTION ROUTE MAP (1/4) BETIO-BAIRIKI AREA</p>	<p>DWG. No. TD-G201</p>
--	-------------------------------------



- LEGEND**
- : EXISTING 11kV UNDERGROUND CABLE TO BE UPGRADED TO 95mm ² X 3C
 - : EXISTING 11kV UNDERGROUND CABLE TO BE UPGRADED TO 70mm ² X 3C
 - : EXISTING 11kV UNDERGROUND CABLE TO BE UPGRADED TO 25mm ² X 3C
 - : EXISTING 11kV UNDERGROUND CABLE

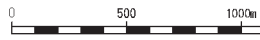


Title 11kV 配電ルート図: バイリキーアンボ地区 11kV DISTRIBUTION ROUTE MAP (2/4) BAIRIKI-AMBO AREA	DWG. N° TD-G202
--	--------------------



LEGEND

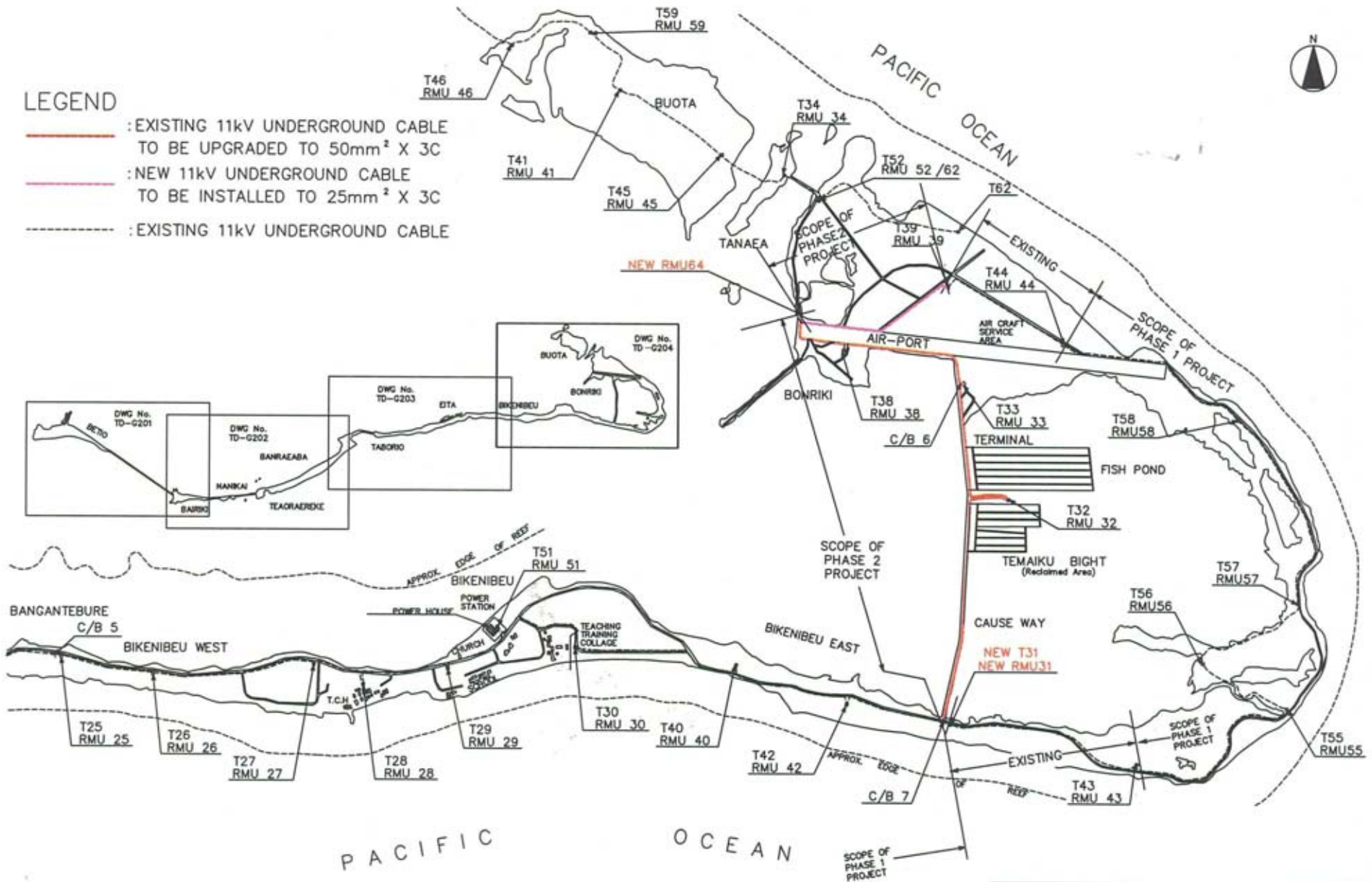
: EXISTING 11kV UNDERGROUND CABLE



Title	DWG. No.
11k 配電ルート図 : アンボ - バンガンテブレ 11kV DISTRIBUTION ROUTE MAP (3/4) AMBO-BANGANTEBURE AREA	TD-G203

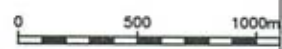
LEGEND

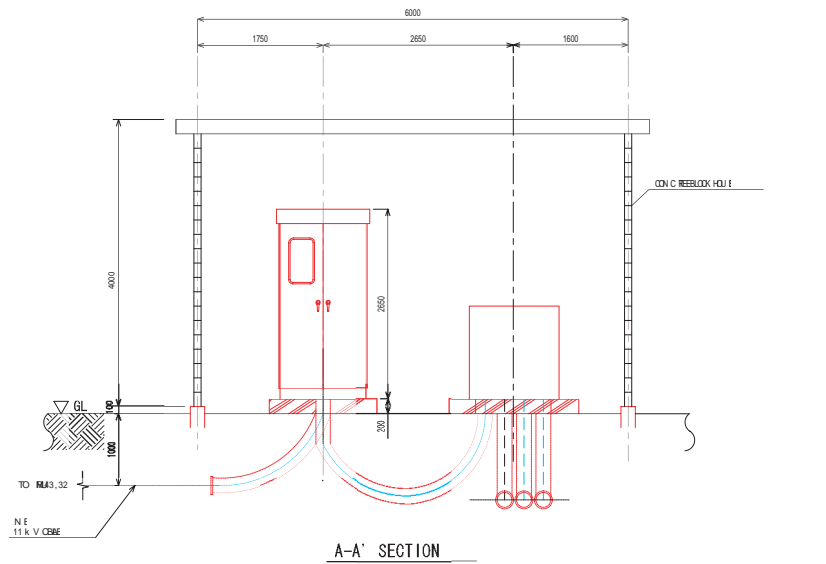
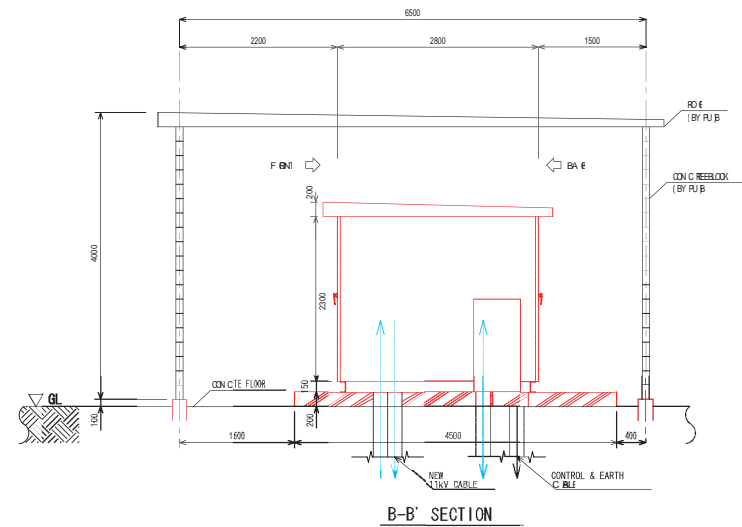
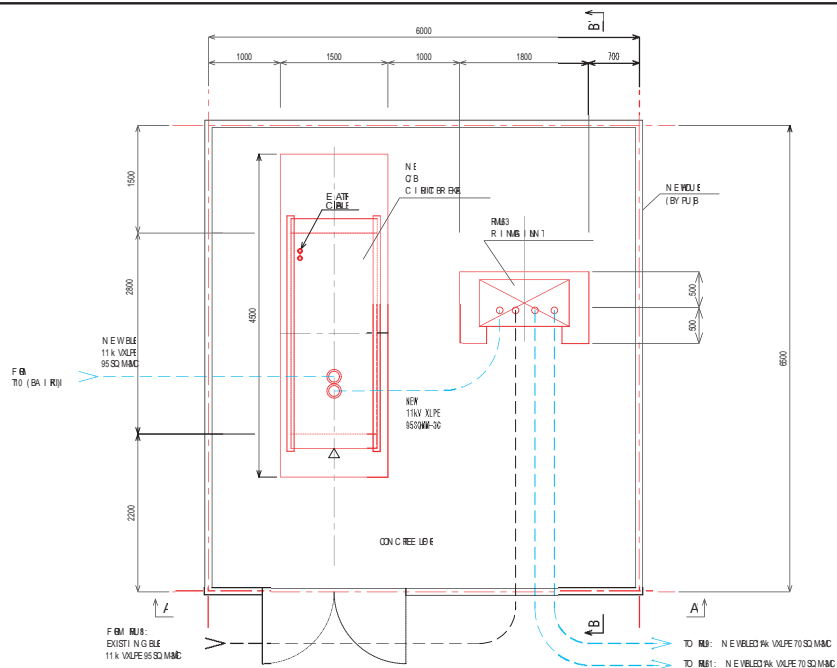
- : EXISTING 11kV UNDERGROUND CABLE TO BE UPGRADED TO 50mm² X 3C
- : NEW 11kV UNDERGROUND CABLE TO BE INSTALLED TO 25mm² X 3C
- - - : EXISTING 11kV UNDERGROUND CABLE



11kV 配電ルート図: バンガンテブレーボンリキ地区
 11kV DISTRIBUTION ROUTE MAP (4/4)
 BANGANTEBURE-BONRIKI AREA

DWG. No. TD-G204





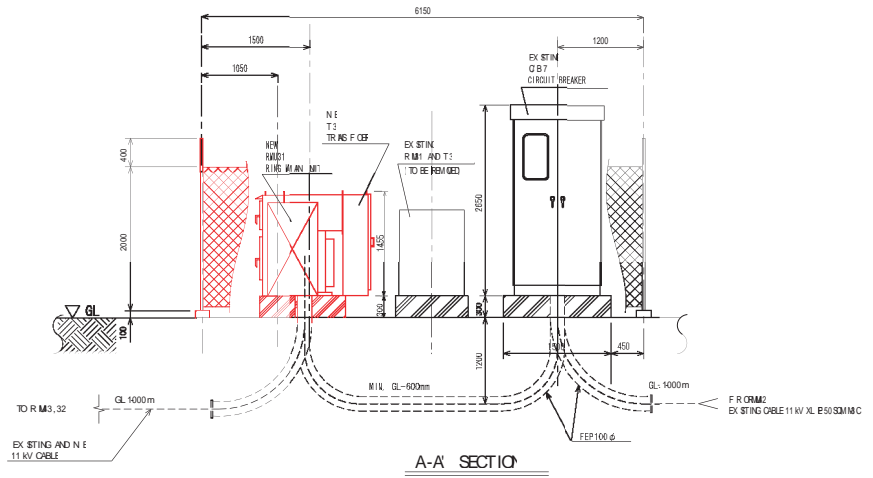
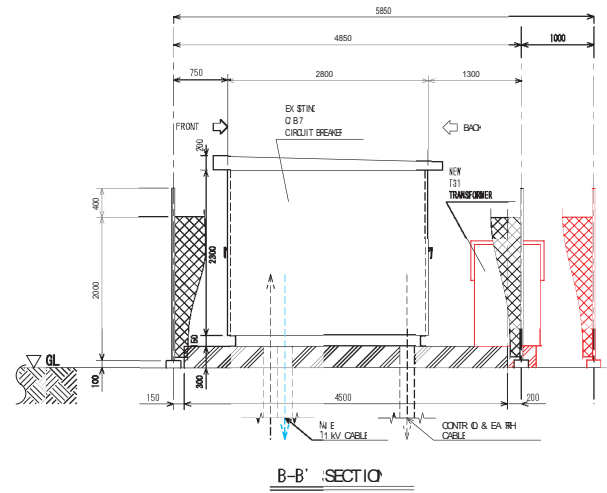
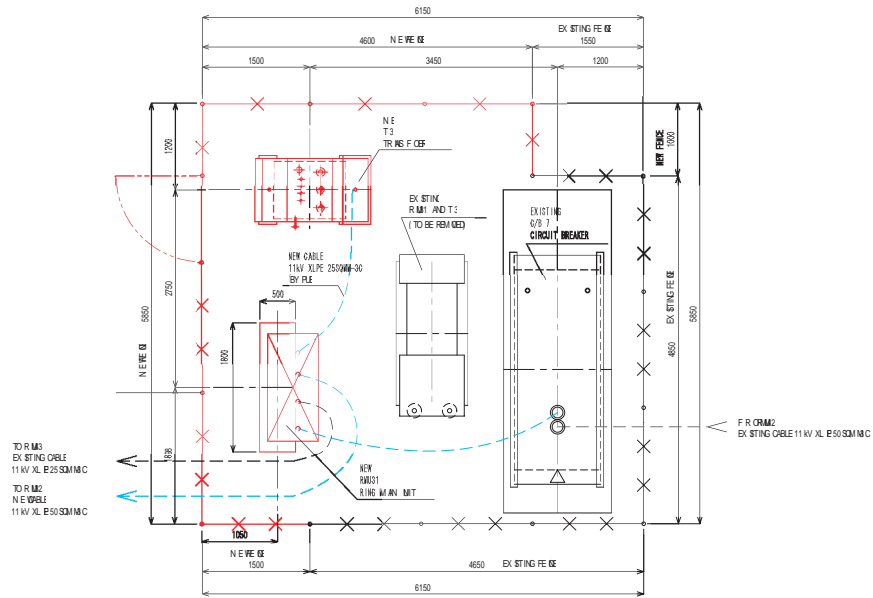
- REMARKS:
- (Red line): EQUIPMENT TO BE STABILIZED BY THE CONTRACTOR
 - (Blue line): CABLES TO BE STABILIZED BY THE CONTRACTOR
 - (Black line): OUT OF SCOPE (EXISTING)

REFERENCE

TITLE	DWG NO.
11kV CIRCUIT BREAKER AND RMU	TD-B01

- NOTES
1. NEW EQUIPMENT SHALL BE OBTAINED BY PU/B
 2. NEW 11kV CABLE SHALL BE OUTDOOR TYPE

Title	DWG NO.
11kV 遮断器(C/B1)および開閉器 RMU63 配置図 LAYOUT OF 11kV CIRCUIT BREAKER PANEL(C/B1) AND RING MAIN UNIT(RMU63)	TD-G211



- REMARKS
- : EQUIPMENT TO BE INSTALLED BY THE CONTR 670
 - : CABLES TO BE INSTALLED BY THE CONTR 670
 - : OUT OF SCOPE (EXISTING)

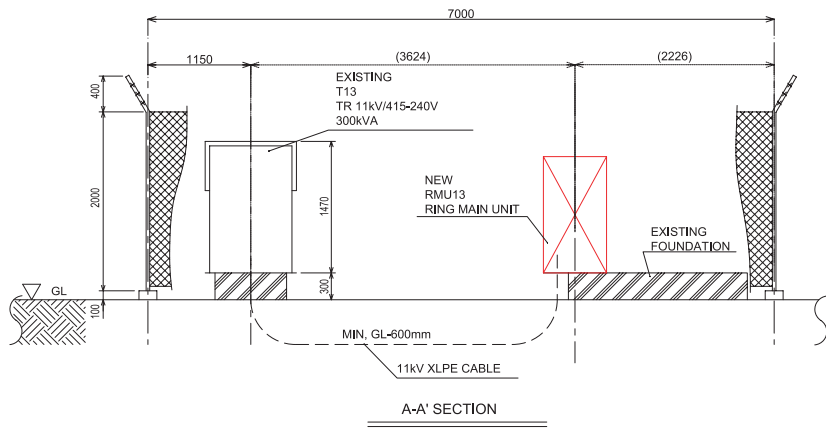
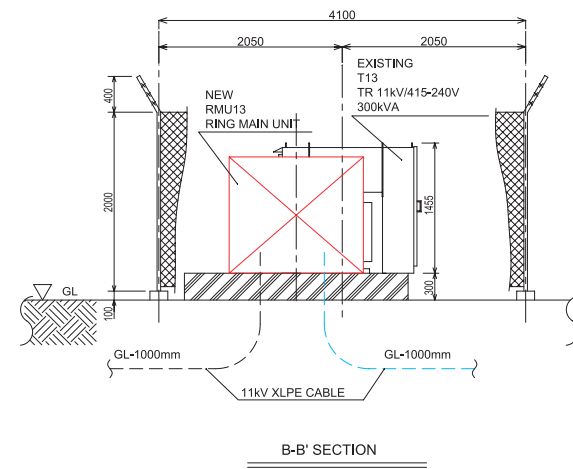
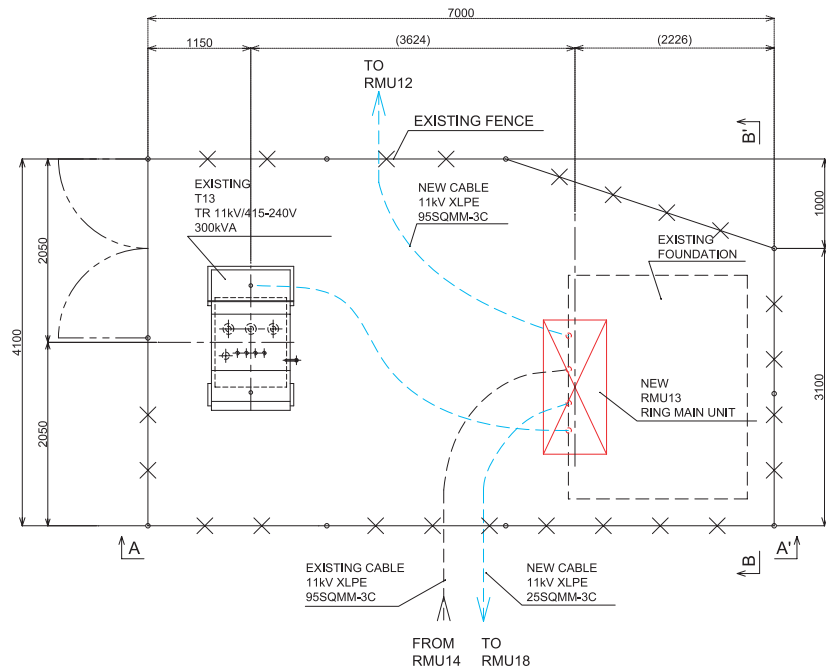
NOTE: CABLE CONNECTION TO BE CHANGED FROM EXISTING RMU1 & T3 TO NEW RMU31 AND NEW T31 AFTER INSTALLATION OF FITTER

REFERENCE DRAWING

TITLE	DWG. NO.
11 kV DISTRIBUTION IN EVID P	TD-ED01

--- 11 kV CABLE

Title	DWG. No.
11 kV 配電用変圧計31)および開閉器 RMU 31)配置図	TD-G212
LAYOUT OF 11kV RING MAIN UNIT(RMU31) AND DISTRIBUTION TRANSFORMER (T31)	



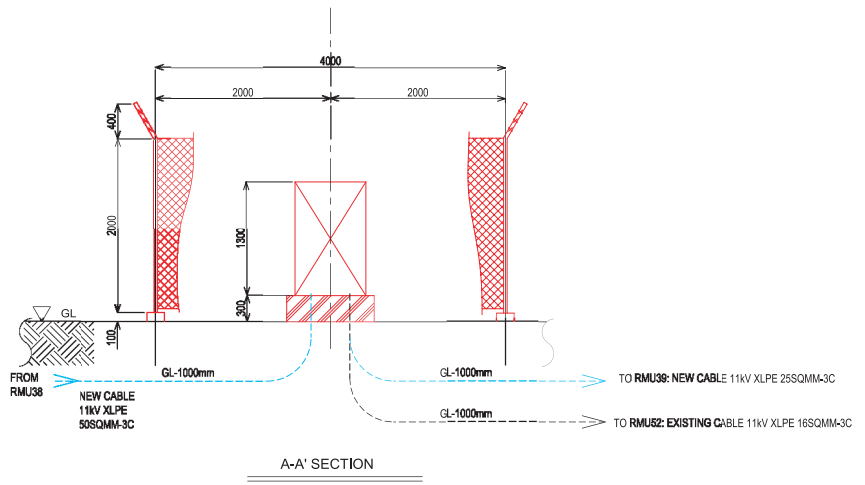
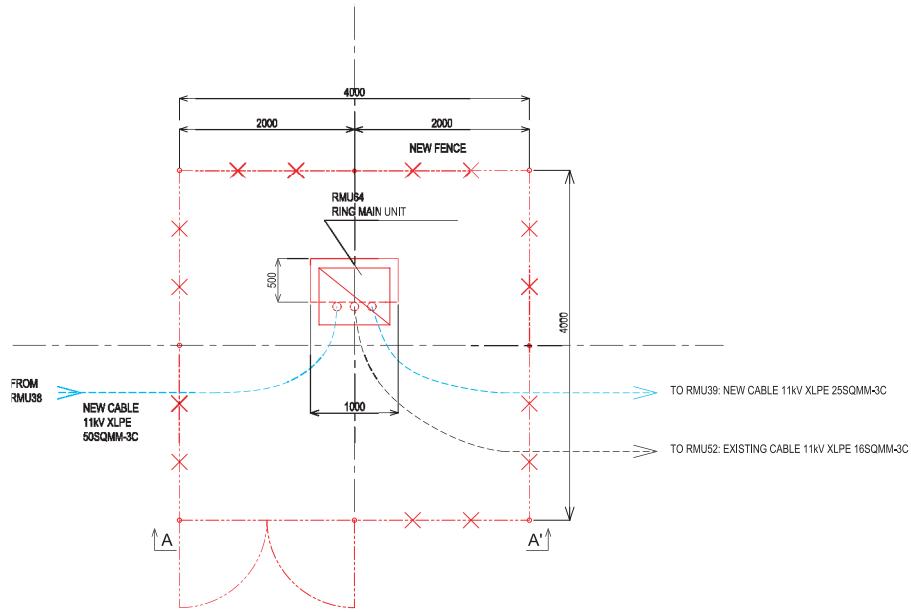
- REMARKS:
- :EQUIPMENT TO BE INSTALLED BY THE CONTRACTOR
 - :CABLES TO BE INSTALLED BY THE CONTRACTOR
 - :OUT OF SCOPE (EXISTING)

REFERENCE DRAWING:

TITLE	DWG.NO.
11kV DISTRIBUTION NET WORK	TD-E201

--- 11kV CABLE

Title	DWG. No.
11kV 配電用開閉器盤 (RMU13) 配置図 LAYOUT OF 11kV RING MAIN UNIT(RMU13)	TD-G213



REMARKS:

- :EQUIPMENT TO BE INSTALLED BY THE CONTRACTOR
- :CABLES TO BE INSTALLED BY THE CONTRACTOR
- :OUT OF SCOPE (EXISTING)

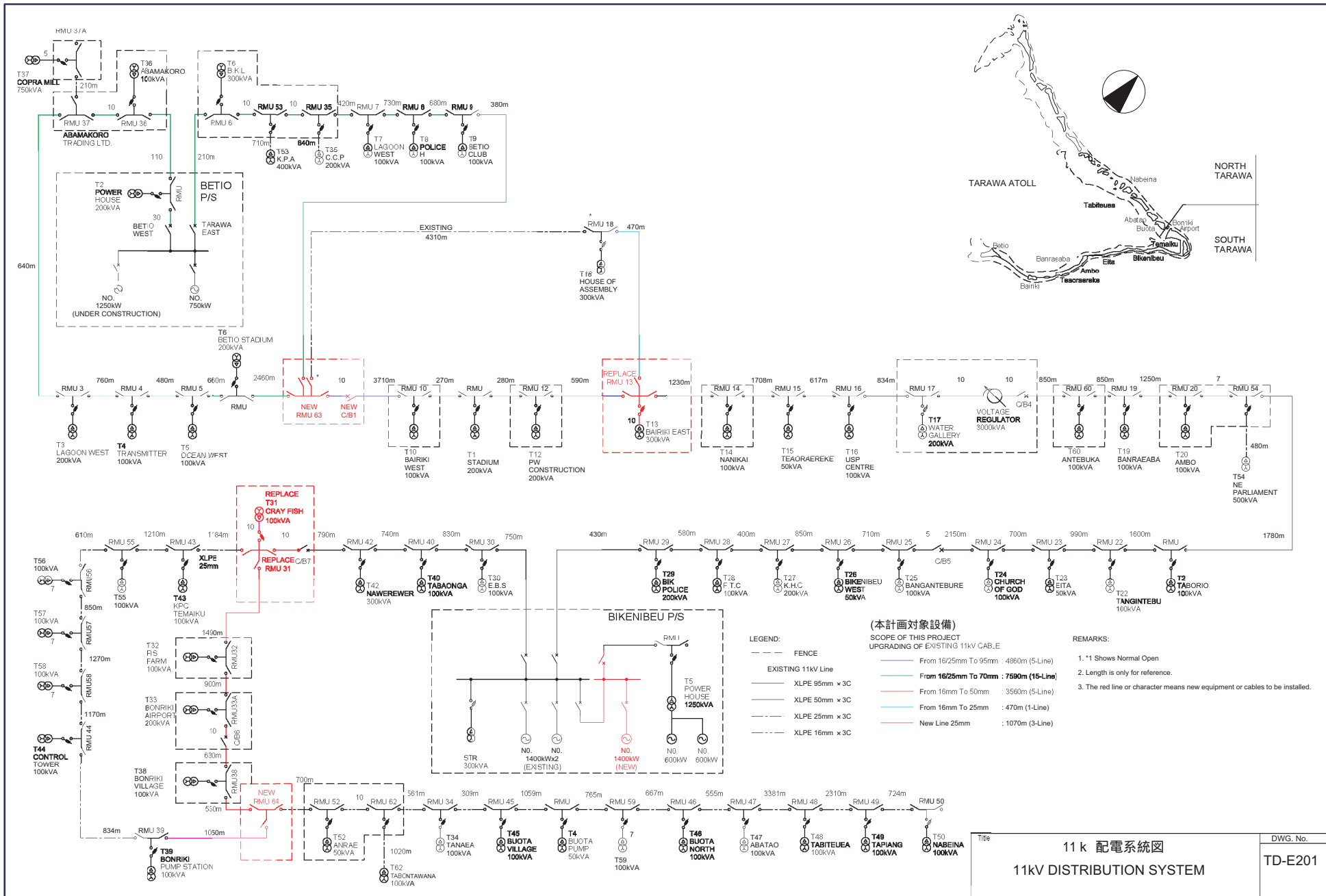
REFERENCE DRAWING:

TITLE	DWG.NO.
11kV DISTRIBUTION NET WORK	TD-E201

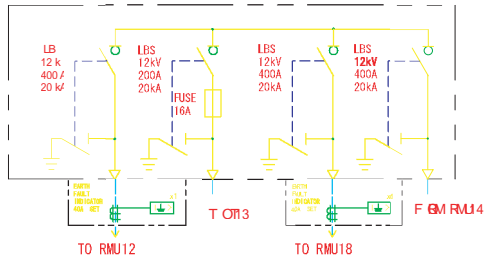
----- 11kV CABLE

Title
 11kV 配電用開閉器盤(RMU64)配置図
 LAYOUT OF 11kV RING MAIN UNIT(RMU64)

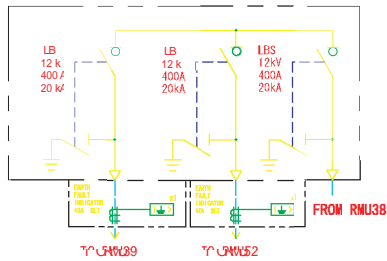
DWG. No.
 TD-G214



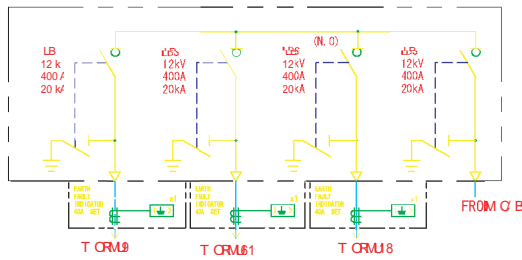
RMU (3 F + 1 T-TYPE)
(FOR RMU3)



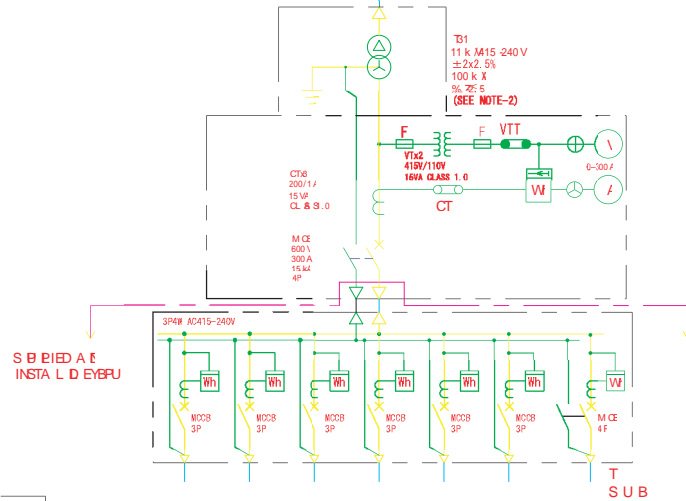
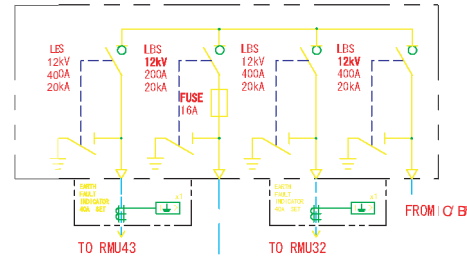
RMU (3 F-TYPE)
(FOR RMU4)



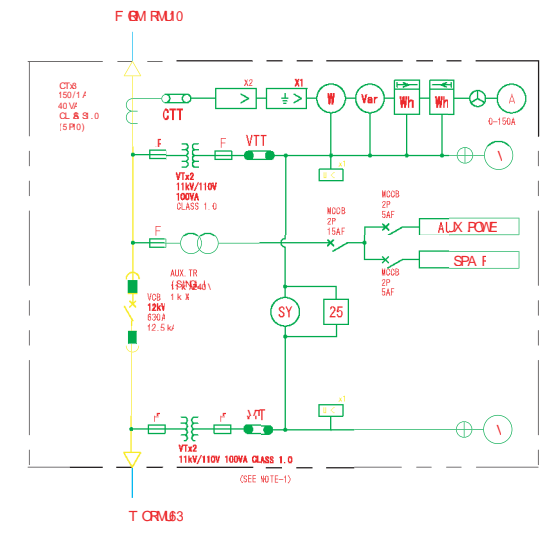
RMU (4 F-TYPE)
(FOR RMU3)



RMU (3 F + 1 T-TYPE) & 100 k X TR
(FOR RMU31, T31)



CB PA N (E C R O B 1)



SMCL	DESCRIPTION	SMCL	DESCRIPTION
F	FUSE	A.C.	CIRCUIT BREAKER
Wh	WATT HOUR METE	(VCB)	VACUUM CIRCUIT BREAKER
V	VOLTMETE	(MCSB)	MOLDED CASE CIRCUIT BREAKER
F	AMMETE		POWE RELAY
V	VOLTMETE		ISOL. SWITCH (ISO)
Va	VARIAMETE		LOAD REBKA SWITCH (LB S)
SY	SYNCHRO METE		TR E-B-PHSE TR ASORNE RTR
25	SYNCHRO CHECK R E 1		
⊕	CH-GE-OE R SWITCH FOR AMMETE		VOLTAGE TRANSFORMER
⊕	CH-GE-OE R SWITCH FOR VOLTMETE		CURRENT TRANSFORMER
VTT	VOLTAGE TEST TE MIN /		ZERO PHASE CURRENT TRANSFORMER
AUX	AUXILIARY TR ASORNE	U	UNDER VOLTAGE RELAY
↳	O/E ROL R E R E 1		
↳	O/E ROL R E GROUND R E 1		
		N.C	NORMA LYCLOSE

- NO 註
1. CIRCUIT BREAKER BA L LB TRIP ED WHE N Ø 11 SIDE A R ED VOLTAGE
 2. TR ASORNE R BA L LB LOW LOS STYPE WITH LONG BIRT TYPE OF HV LV CABL E DOUS