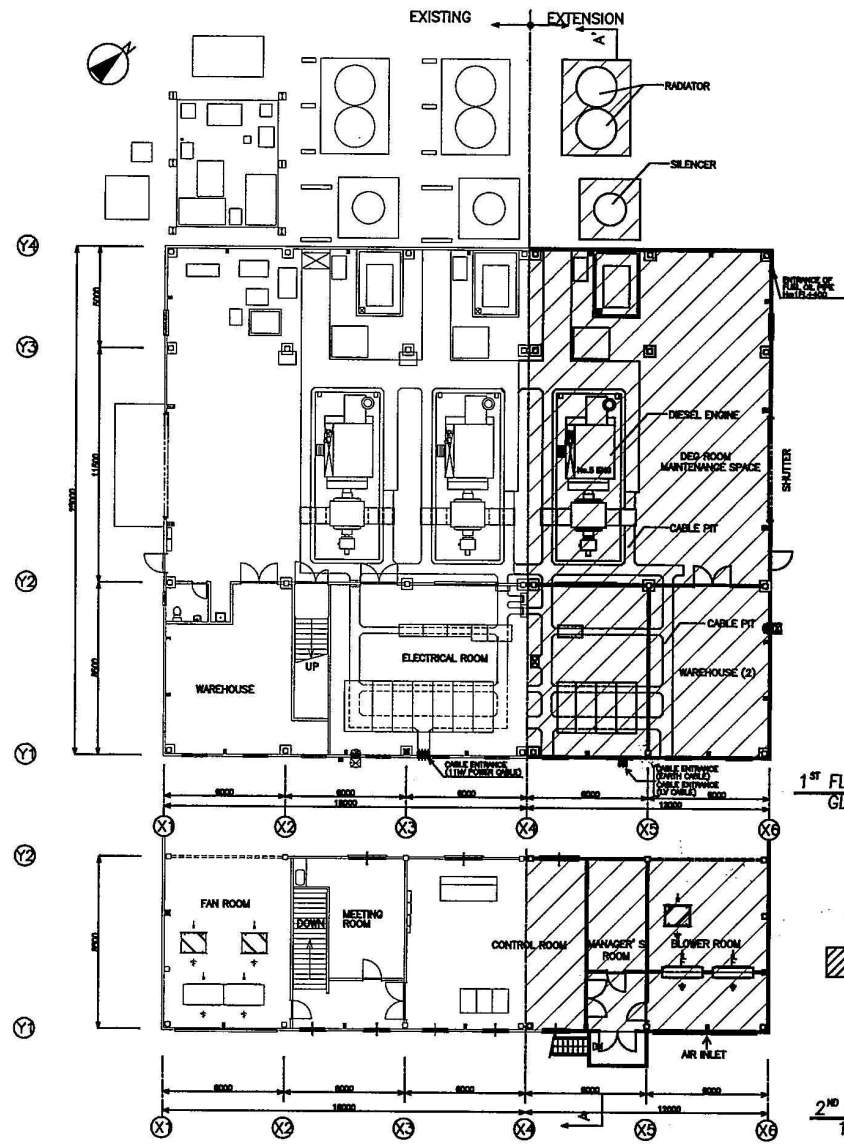
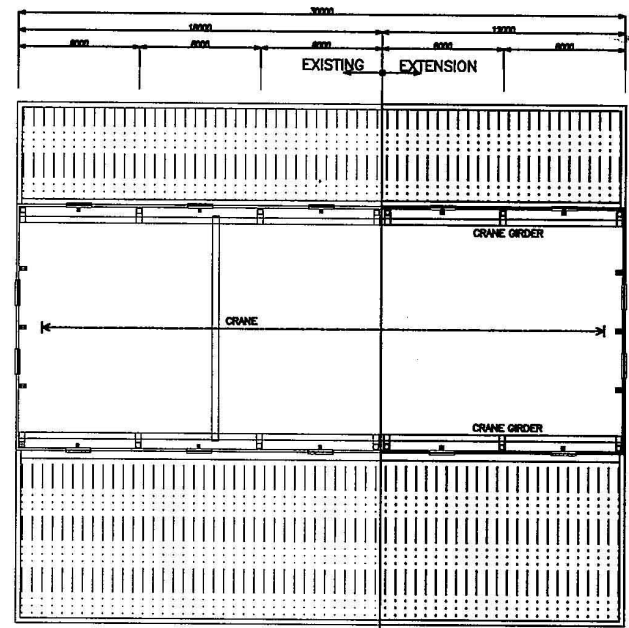


1.GENERAL			4.DOORS & WINDOWS SCHEDULES				
SITE AREA	3,000.00m <sup>2</sup>			ITEM	QUANTITY	SIZE(WxH)	REMARK
BUILDING AREA	450.00m <sup>2</sup> (EXISTING) + 300.00m <sup>2</sup> (EXTENSION) = 750m <sup>2</sup>						
TOTAL BUILDING AREA	603.00m <sup>2</sup> (EXISTING) + 402.00m <sup>2</sup> (EXTENSION)=1005m <sup>2</sup>						
UNDER GROUND	R.C. CONSTRUCTION		SS	STEEL SHUTTER	1	500x4500	•ELECTRIC SHUTTER •SMOKEPROOF TYPE •PAINT FINISH
UPPER GROUND	STEEL STRUCTURE		AW	ALUMINIUM WINDOW	1	1200x1200	•HORIZONTAL SLIDING •CLEAR FLOAT GLASS, t=5mm
2.EXTERIOR FINISHING			AW	ALUMINIUM WINDOW	7	1800x1200	•HORIZONTAL SLIDING(DOUBLE SASH) •CLEAR FLOAT GLASS, t=5mm
ROOF	SHELL(RIBBED) ROOF h=150mm ACID-RESISTANT HIGH-POLYMER CLAD STEEL SHEET t=0.8mm		AW	ALUMINIUM WINDOW	5	1200x600	•TOP-HINGED OUTSWINGING •TINTED GLASS, t=5mm
EXTERIOR WALL	RIBBED WALL CLADDING h=38mm ACID-RESISTANT HIGH-POLYMER CLAD STEEL SHEET t=0.6mm		AW	ALUMINIUM WINDOW	1	600x600	•TOP-HINGED OUTSWINGING •PATTERN GLASS, t=5mm
BASEBOARD	PAINT FINISH ON CONCRETE		AW	ALUMINIUM WINDOW	1	3000x1200	•FIX(DOUBLE SASH) •CLEAR FLOAT GLASS, t=5mm
3.INTERIOR FINISHING			AD	ALUMINIUM DOOR	1	900x2000	
ITEM	FINISHING/SPECIFICATION		AD	ALUMINIUM DOOR	2	1800X2000	
DEG ROOM	FLOOR	CONCRETE STEEL TROWEL FINISH/OILPROOF PAINT FINISH	AD	ALUMINIUM DOOR	1	900x2000	•AIR TIGHT
	WALL	GLASSWOOL ACOUSTIC BOARD t=50mm SOUND PROOF CEMENT BOARD t=12.3mm	AG	ALUMINIUM LOUVER	1	5000x1200	
	CEILING	GLASSWOOL ACOUSTIC BOARD t=50mm SOUND PROOF CEMENT BOARD t=12.3mm	AG	ALUMINIUM LOUVER	2	9000x1200	
ELECTRICAL ROOM	FLOOR	CONCRETE STEEL TROWEL FINISH/DUSTPROOF PAINT FINISH					
	WALL	CEMENT BOARD, PAINT FINISH					
	CEILING	-					
CONTROL ROOM	FLOOR	DECKPLATE RC FLOOR, POLYVINYL TILE					
	WALL	CEMENT BOARD, PAINT FINISH					
	CEILING	ROCKWOOL SYSTEM CEILING BOARD(300x600)					
WAREHOUSE	FLOOR	CONCRETE STEEL TROWEL FINISH/DUSTPROOF PAINT FINISH					
	WALL	CEMENT BOARD, PAINT FINISH					
	CEILING	-					
VENTILATION FAN ROOM	FLOOR	CONCRETE STEEL TROWEL FINISH/DUSTPROOF PAINT FINISH					
	WALL	CEMENT BOARD, PAINT FINISH					
	CEILING	CEMENT BOARD, PAINT FINISH					
MANAGER'S ROOM	FLOOR	DECKPLATE RC FLOOR, POLYVINYL TILE					
	WALL	CEMENT BOARD, PAINT FINISH					
	CEILING	ROCKWOOL SYSTEM CEILING BOARD(300x600)					



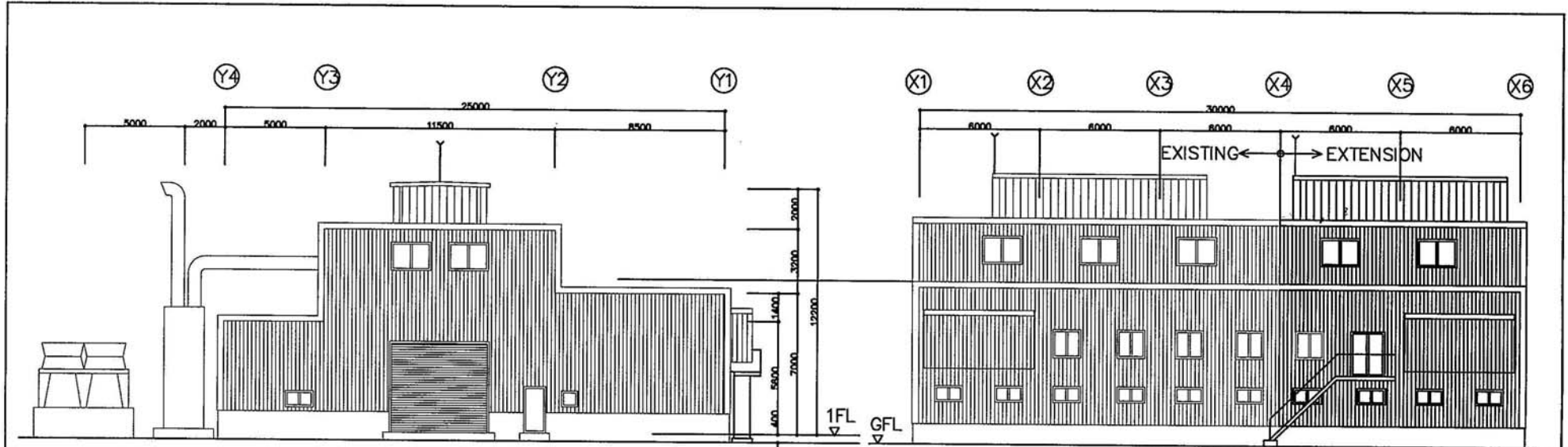
1<sup>ST</sup> FLOOR PLAN  
GL+400



CRANE GIRDER PLAN  
1FL+9250

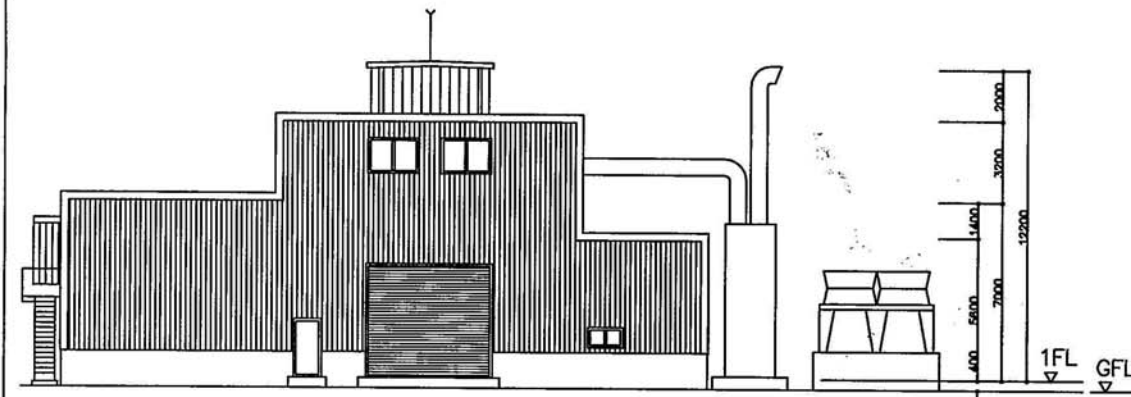
2<sup>ND</sup> FLOOR PLAN  
1FL+3700

<p>Title</p> <p>発電所建屋平面図 PLAN OF POWERHOUSE</p>	<p>DWG. No.</p> <p>TB-A202</p>
-----------------------------------------------------	--------------------------------

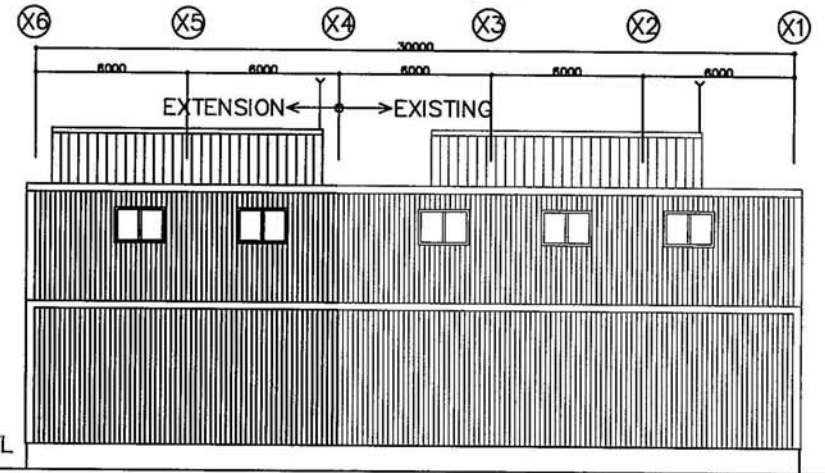


西立面图 1/200  
WEST ELEVATION 1/200

南立面图 1/200  
SOUTH ELEVATION 1/200

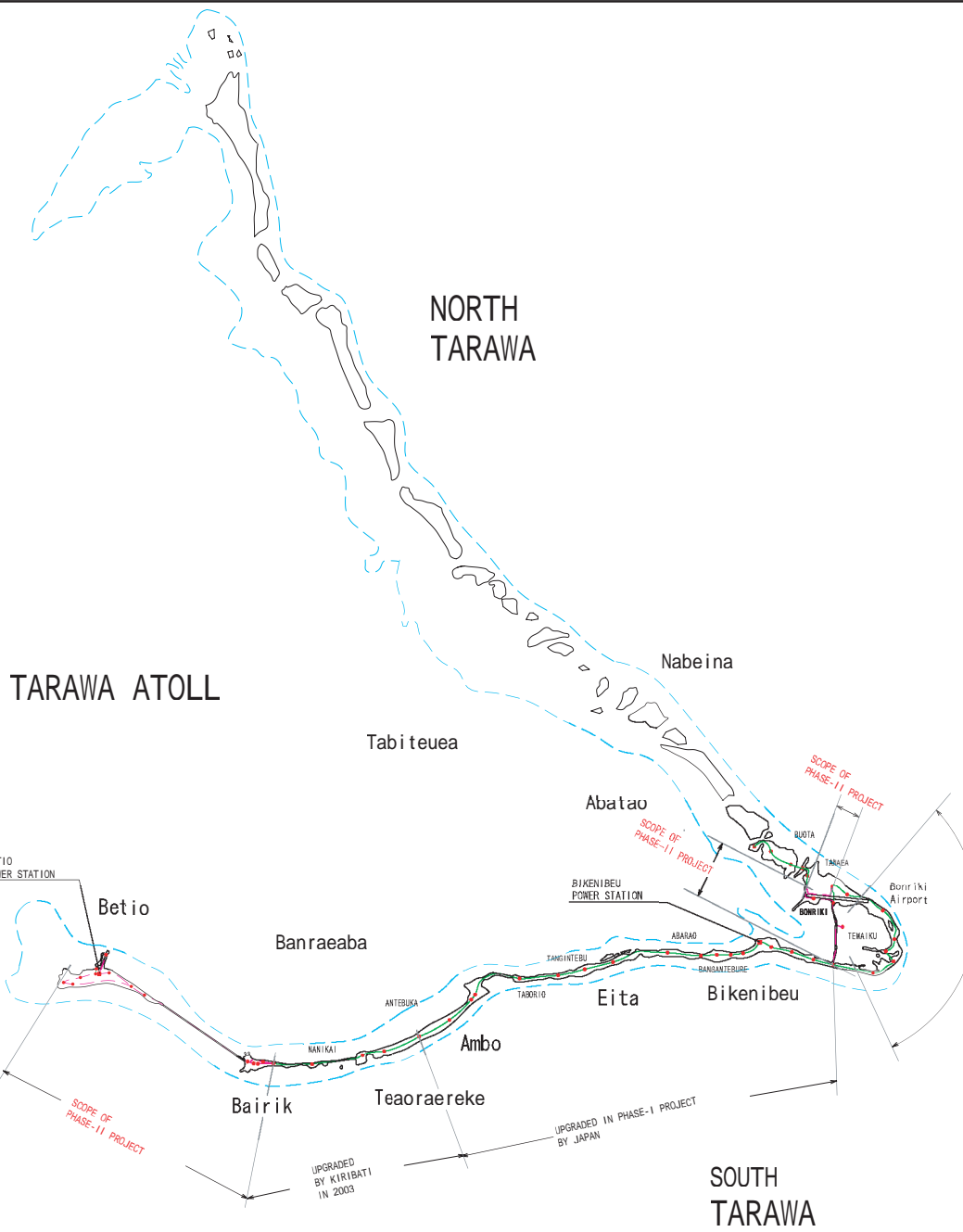


東立面图 1/200  
EAST ELEVATION 1/200



北立面图 1/200  
NORTH ELEVATION 1/200

<p>Title 発電所建屋立面图 ELEVATION OF POWERHOUSE</p>	<p>DWG. No. TB-A203</p>
-------------------------------------------------------	-----------------------------

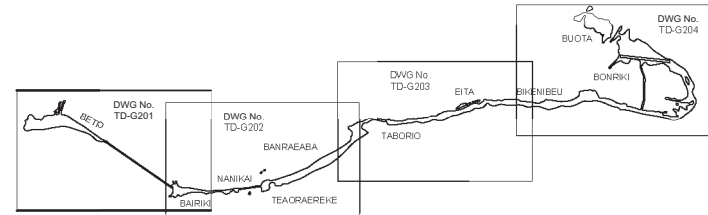
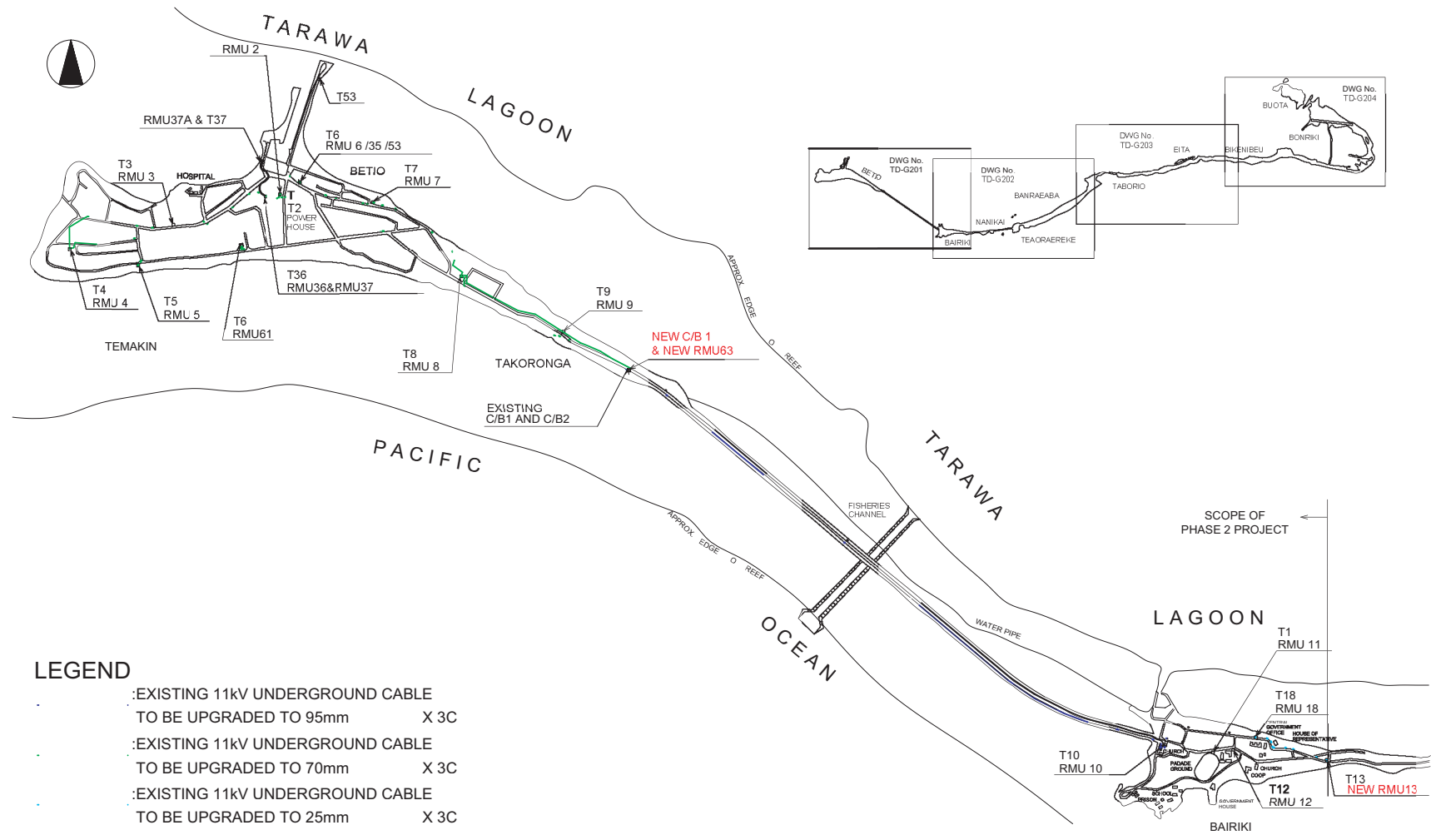


REFERENCE DRAWINGS

DWG. NO	TITLE
1. TD-201	11kV DISTRIBUTION SYSTEM (1/4) BETIO-BAIRIKI AREA
2. TD-202	11kV DISTRIBUTION SYSTEM (2/4) BAIRIKI-AMBO AREA
3. TD-203	11kV DISTRIBUTION SYSTEM (3/4) AMBO-BIKENIBEU AREA
4. TD-204	11kV DISTRIBUTION SYSTEM (4/4) BIKENIBEU-BUOTA AREA

UPGRADED IN PHASE-I PROJECT BY JAPAN

Title	11kV配電ルート図：タラワ全地区	DWG. No
	11kV DISTRIBUTION ROUTE MAP IN TARAWA	TD-G200



**LEGEND**

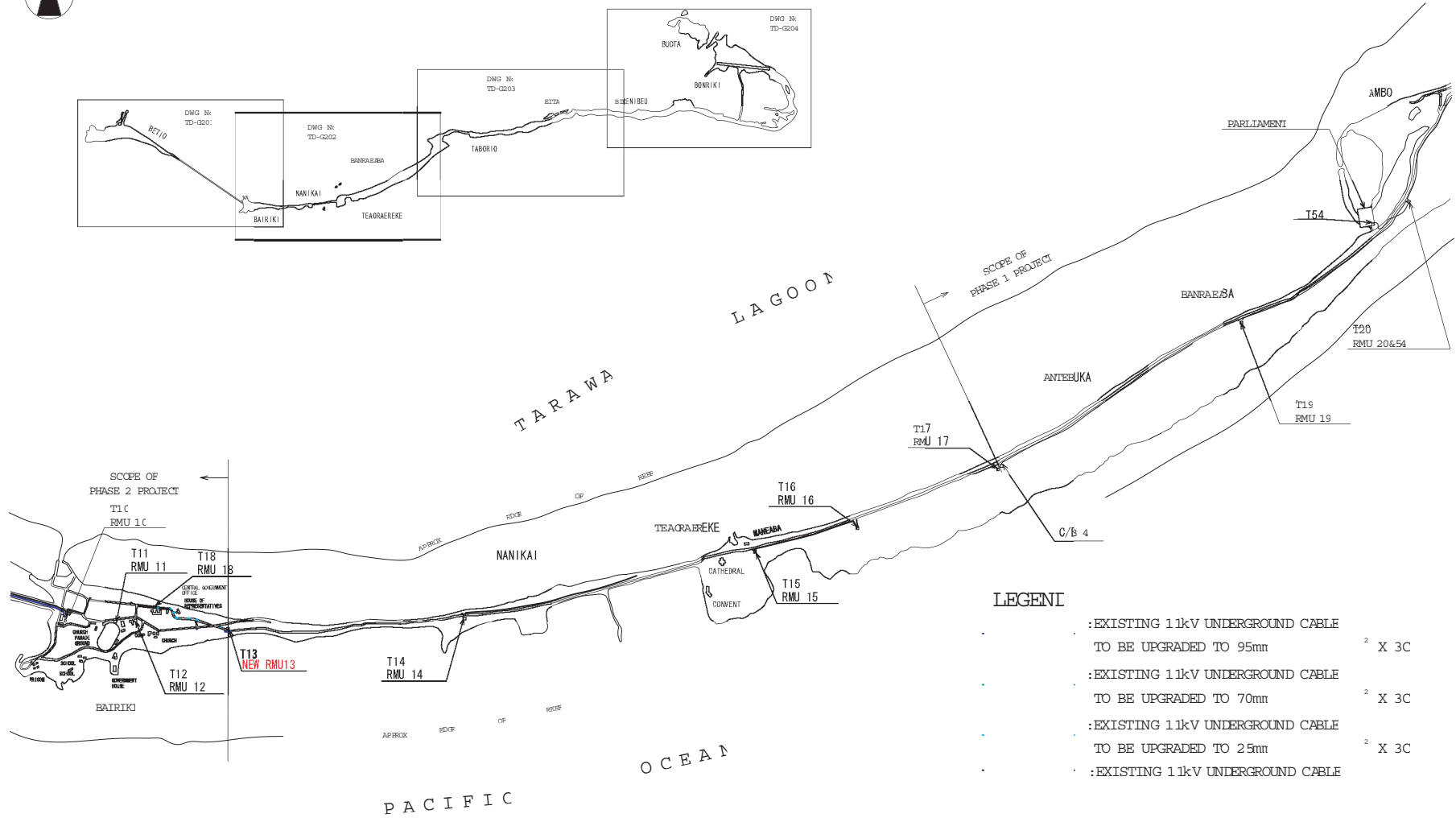
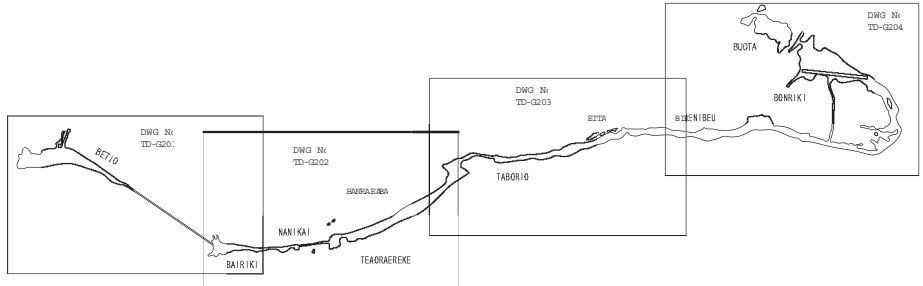
- : EXISTING 11kV UNDERGROUND CABLE TO BE UPGRADED TO 95mm X 3C
- : EXISTING 11kV UNDERGROUND CABLE TO BE UPGRADED TO 70mm X 3C
- : EXISTING 11kV UNDERGROUND CABLE TO BE UPGRADED TO 25mm X 3C

**REMARKS**

1. New C/B1 and RMU63 shall be located East side of Existing C/B1 and C/B2.
2. PUB shall provide house for new C/B1 and RMU63.
3. New RMU13 shall be located inside of the existing fence.



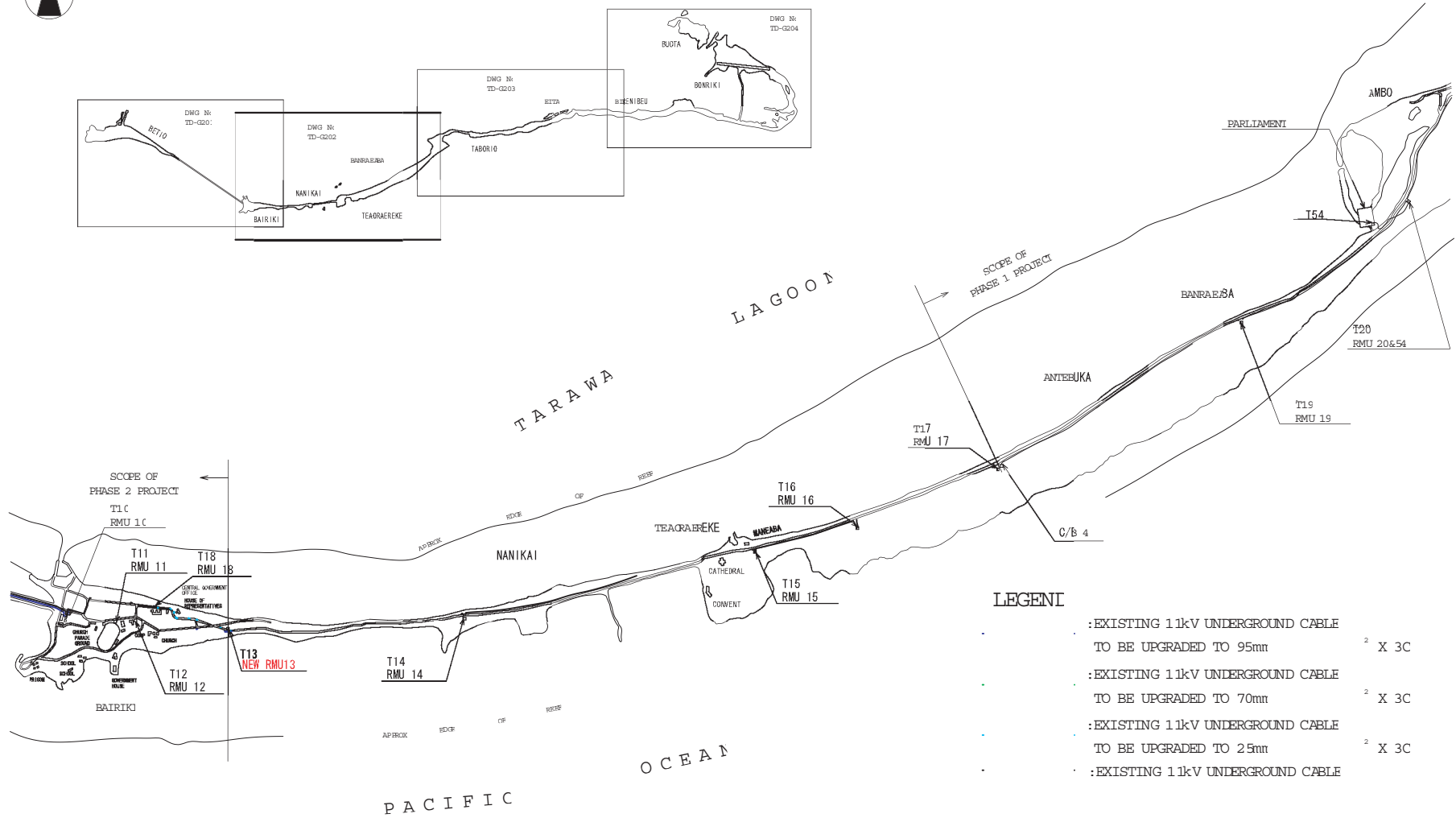
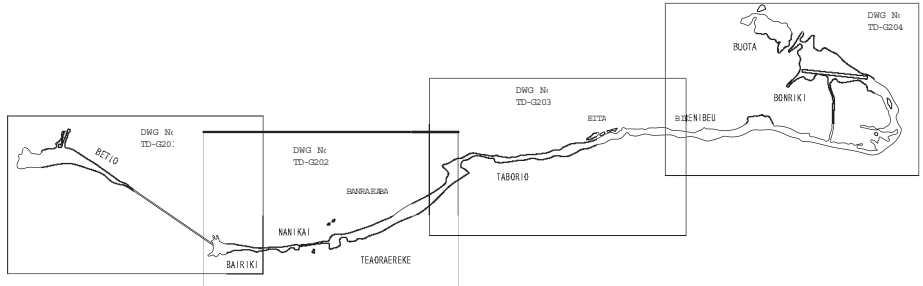
Title <b>11kV 配電ルート図：ベシオーバイリキ地区</b> <b>11kV DISTRIBUTION ROUTE MAP (1/4)</b> <b>BETIO-BAIRIKI AREA</b>	DWG. No. <b>TD-G201</b>
-----------------------------------------------------------------------------------------------------------------	----------------------------



- LEGEND**
- : EXISTING 11kV UNDERGROUND CABLE TO BE UPGRADED TO 95mm <sup>2</sup> X 3C
  - : EXISTING 11kV UNDERGROUND CABLE TO BE UPGRADED TO 70mm <sup>2</sup> X 3C
  - : EXISTING 11kV UNDERGROUND CABLE TO BE UPGRADED TO 25mm <sup>2</sup> X 3C
  - : EXISTING 11kV UNDERGROUND CABLE



Title 11kV 配電ルート図: バイリキーアンボ地区 11kV DISTRIBUTION ROUTE MAP (2/4) BAIRIKI-AMBO AREA	DWG. N° TD-G202
--------------------------------------------------------------------------------------------	--------------------



- LEGEND**
- : EXISTING 11kV UNDERGROUND CABLE TO BE UPGRADED TO 95mm <sup>2</sup> X 3C
  - : EXISTING 11kV UNDERGROUND CABLE TO BE UPGRADED TO 70mm <sup>2</sup> X 3C
  - : EXISTING 11kV UNDERGROUND CABLE TO BE UPGRADED TO 25mm <sup>2</sup> X 3C
  - : EXISTING 11kV UNDERGROUND CABLE



Title 11kV 配電ルート図: バイリキーアンボ地区 11kV DISTRIBUTION ROUTE MAP (2/4) BAIRIKI-AMBO AREA	DWG. N. TD-G202
--------------------------------------------------------------------------------------------	--------------------